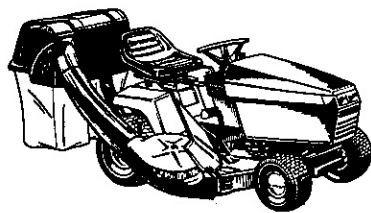


**BROADMOOR
& LTH Series**

**Attachments
& Accessories**



**PARTS
MANUAL**

Product Identification:

When ordering parts, keep your products serial number and manufacturer's number in mind. Variations may occur in a part between early & later model products, causing the product serial number to be listed in the parts description whenever these variations occur. Record your I.D. numbers here for quick, future reference.

Product Mfg. No. _____ S/N _____ Mower Mfg. No. _____ S/N _____

Attention:

Standard torques appear in a chart at the end of the manual, while Important Individual torques are given on specific parts drawings. CRITICAL and MAJOR notations point out important facts or instructions which relate to personal safety and proper machine operation. Any CRITICAL notation **C** which may appear in this book, pinpoints characteristics which, if not properly followed, can create a safety hazard. Any MAJOR notation **M** which may appear in this book, marks characteristics which, if not properly followed, may result in operating failure, shortened product life, or greatly reduced quality of the unit. For your convenience, assembly notes are included in parts drawings to assist in repair and assembly of unit.

SIMPLICITY BRAND PRODUCTS

OILS - SPECIFICALLY BLENDED OF HIGH QUALITY BASE OILS & ADDITIVES.

Special Worm Gear Oil: Required for protection of brass gears and mating parts.

- **Cold Weather Worm Gear Oil** for snowthrowers with worm gear drive. 8 Oz. Bottle, Part #1704636, Case of 12-8 Oz. Bottles, Part #1685406.

Multi-Purpose Hydraulic/Transmission Oil for use in most hydraulic applications, and hydrostatic transmissions. Specific Simplicity applications: All hydrostatic transmissions, all bevel gear cases. Case of 12 Quarts, Part #1685516, 2-1/2 Gallon Container, Part #1685539.

SAE 5W-30 SF/CD Cold Weather Engine Oil for use in all four cycle and diesel engines at 30° temp. and under. Case of 12 quarts, Part #1685576.

SAE 15W-40 SF/CD Engine Oil for gas and diesel engines, warm weather; see engine manufacturer recommendations. Case of 12 quarts, Part #1685554.

SAE 30W SG/CC Detergent Engine Oil for use in four cycle lawn and garden engines at operating temp. of 32° and above. Also recommended for use in hydrostatic transmissions where 30W oil is specified. Case of 12 quarts, Part #1685659.

DEGREASER, DEGRIMER, PARTS CLEANER removes grease, oil, dirt and grime without harming paint or decals.

1 Quart w/Trigger Spray	1685619
1 Gallon Bottle	1685621
Extension Sprayer for Gallon Bottle	1685623

TOUCH-UP PAINT keeps equipment in showroom condition.

Spray Cans	Quarts	Daubers-12 Per Ctn.
<i>For Products Built After 8/1/89.</i>		
"Deep Orange" 13 Oz. Can 1685611 Case 12 Cans 1685614	1685612	1685616 Mixed 6 Deep Or., 6 White 1/2 Oz. Bottles
"Gloss Black" 13 Oz. Can 1685639 Case 12 Cans 1685640	1685641	N/A
"White" 13 Oz. Can 103049 Case 12 Cans 1685178	1685032	See Above

Consult decal on equipment for proper color.

AVAILABLE ACCESSORIES:

DESIGNER SEAT COVERS are double stitched, easy care vinyl. Keeps new seats new, makes worn seats look new.

Small Seat Cover w/Pocket, Part #1685540. Fits all Rear Engine Riders, FC, RT Series Tractors.

Large Seat Cover w/Pocket, Part #1685541. Fits all 12.5 & 16 LT and GT Series Tractors.

Seat Cover, Part #1685577. Fits all 18 & 20 GTH Tractors.

PNEUMATIC TIRE SEAL seals all leaks including bead leaks and punctures up to 3/16 inch diameters. Prevents flats for tread life of tire. Available in following amounts.

Case of 12 -11 Oz. Tubes	1685537
Case of 24 -11 Oz. Tubes	1685525
5 Gallon Pail	1685527

HOOR METER KIT, Part #1685535.

GREASE GUN KIT has 12" flexible hose to get into tight spots with ease. Kit contains: gun and 1-8 Oz. tube of grease. Part #1685510. For replacement tube, order Part #103077.

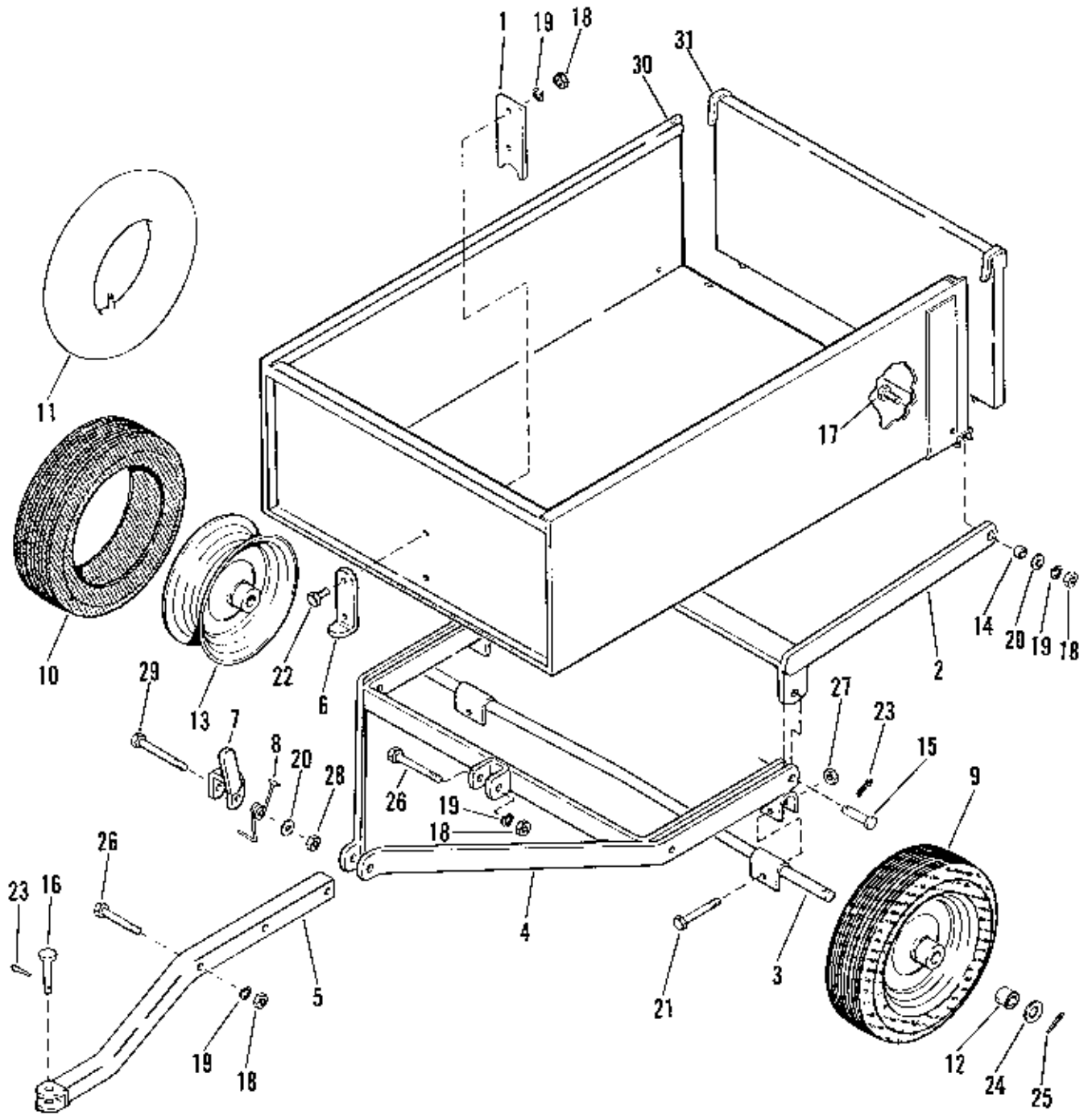
CHROME "Moon" Hubcaps

4" Rim	163114
6" Rim	156210
8" Rim	158211
10" Rim	1667782
12" Rim	154505

**Extend Equipment Life - Use Only Genuine Simplicity Parts & Accessories
Available at Your Local Simplicity Dealer**

Table of Contents

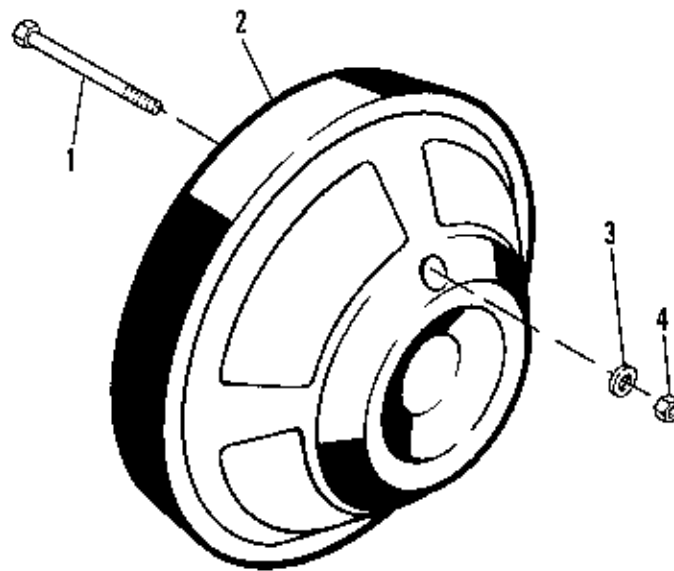
1600236	DUMP CART	2
1690555	WEIGHTS, REAR WHEEL	4
1691520	42" SNOW/DOZER BLADE	6
	(Requires 1691832 Lift Lever)	
1691521	36" SNOWTHROWER	
1691522	42" SNOWTHROWER	
	Body & Rotor Group	8
	Drive Group	10
	Spout Group	12
1691767	TWIN BAG GRASS CATCHER	
	Adapter, Blade & Tube Group	14
	Cover Group	16
	Hitch Group	18
1691791	TURBO TWIN BAG CATCHER	
	Cover Group	16
	Hitch Group	18
	Tube Group	20
1691829	36" & 42" SNOWTHROWER HITCH	
	Hitch Group	22
	Bracket & Lift Rod Group	24
1691832	MANUAL LIFT LEVER KIT	26
1691833	42" SNOW/DOZER BLADE HITCH	28
1691837	FRONT COUNTERWEIGHT	30
1691838	WEIGHT BOX	30
1691867	38" TURBO BLOWER	
	Turbo Housing Group	32
	Arbor & Deflector Group	34
1691868	44" TURBO BLOWER	
	Turbo Housing Group	32
	Arbor & Deflector Group	36
1691869	QUAD BAGGER DUMP CART	
	Dump Cart Group	38
	Hitch Group	40
1691870	QUAD BAGGER	42
1692039	42" SNOW/DOZER BLADE HITCH	28
1692041	40" SNOWTHROWER HITCH - MANUAL LIFT	
	Hitch Group	44
	Bracket & Manual Lift Rod Group	46
1692089	38" MULCHING MOWER KIT	48
1692090	44" MULCHING MOWER KIT	50
1692356	40" SNOWTHROWER	
	(Requires 1692041 Hitch, 1691832 Lift Lever & 1690555 Wheel Weights)	
	Frame, Drive & Gearbox Group	52
	Hitch Support Group	54
	Chute & Handcrank Group	56
	Lift Group	58
	Decal Group	60



NOTE: Use standard hardware torque spec. chart unless otherwise noted.

Dump Cart Group

Ref. No.	Part No.	Qty.	Description
1	102005	1	PLATE, Box Guide
2	102024	1	PIVOT ASSY., Box
3	102027	1	AXLE ASSY.
4	102035	1	FRAME ASSY.
5	102037	1	TONGUE ASSY.
6	102040	1	PLATE, Box Catch
7	102051	1	CLEVIS ASSY.
8	102075	1	SPRING, Torsion
9	170320	2	WHEEL & TIRE ASSY. (Incl. Ref. Nos. 10, 11, 12, 13)
10	102052	2	TIRE
11	153038	2	TUBE, 4.00 x 8
12	156316	4	BEARING
13	170319	2	WHEEL
14	8151076	2	BUSHING
15	102004	2	PIN, Pivot
16	105249	1	PIN
17	1921210	2	CAPSCREW, Hex, 3/8-16 x 1
18	916950	6	NUT, Hex, Full, 3/8-16
19	916965	6	LOCKWASHER, 3/8
20	1917378	3	WASHER, 3/8
21	1921978	2	CAPSCREW, 5/16-18 x 2
22	1920415	2	CAPSCREW, Hex, 3/8-16 x 1-1/4
23	1918196	3	PIN, Quick
24	1918433	2	WASHER, Plain, 3/4
25	1918459	2	COTTER PIN, 3/16 x 1-1/2
26	1922130	2	CAPSCREW, Hex, 3/8-16 x 2-1/4
27	1923362	2	NUT, Hex, Full, 5/16-18
28	1930651	1	NUT, Hex, Centerlock, 3/8-16
29	930596	1	CAPSCREW, Hex, 3/8-16 x 2-3/4
30	1668478	1	TRAILER & END GATE ASSY.
31	1668462	1	GATE END



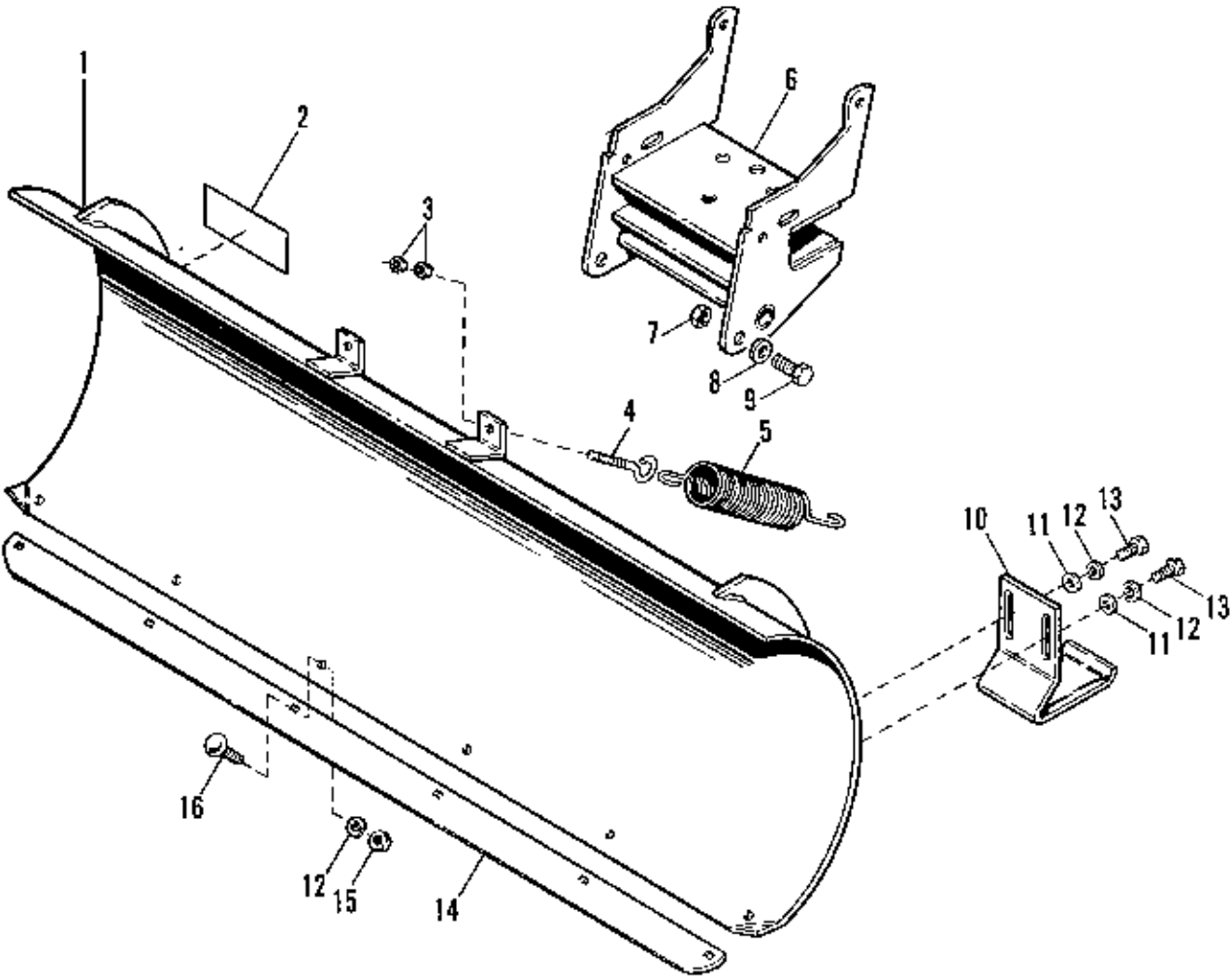
NOTE: Use standard hardware torque spec. chart unless otherwise noted.

Mfg. No. 1690555

Rear Wheel Weight

Ref. No.	Part No.	Qty.	Description
1	1990513	2	CAPSCREW, Hex Hd., 3/8-16 x 8-3/4 (2-1/2 Thread Length)
*2		1	WEIGHT, Wheel
3	1924940	2	WASHER, Plain, 3/8
4	1916950	2	NUT, Hex, Full, 3/8-16

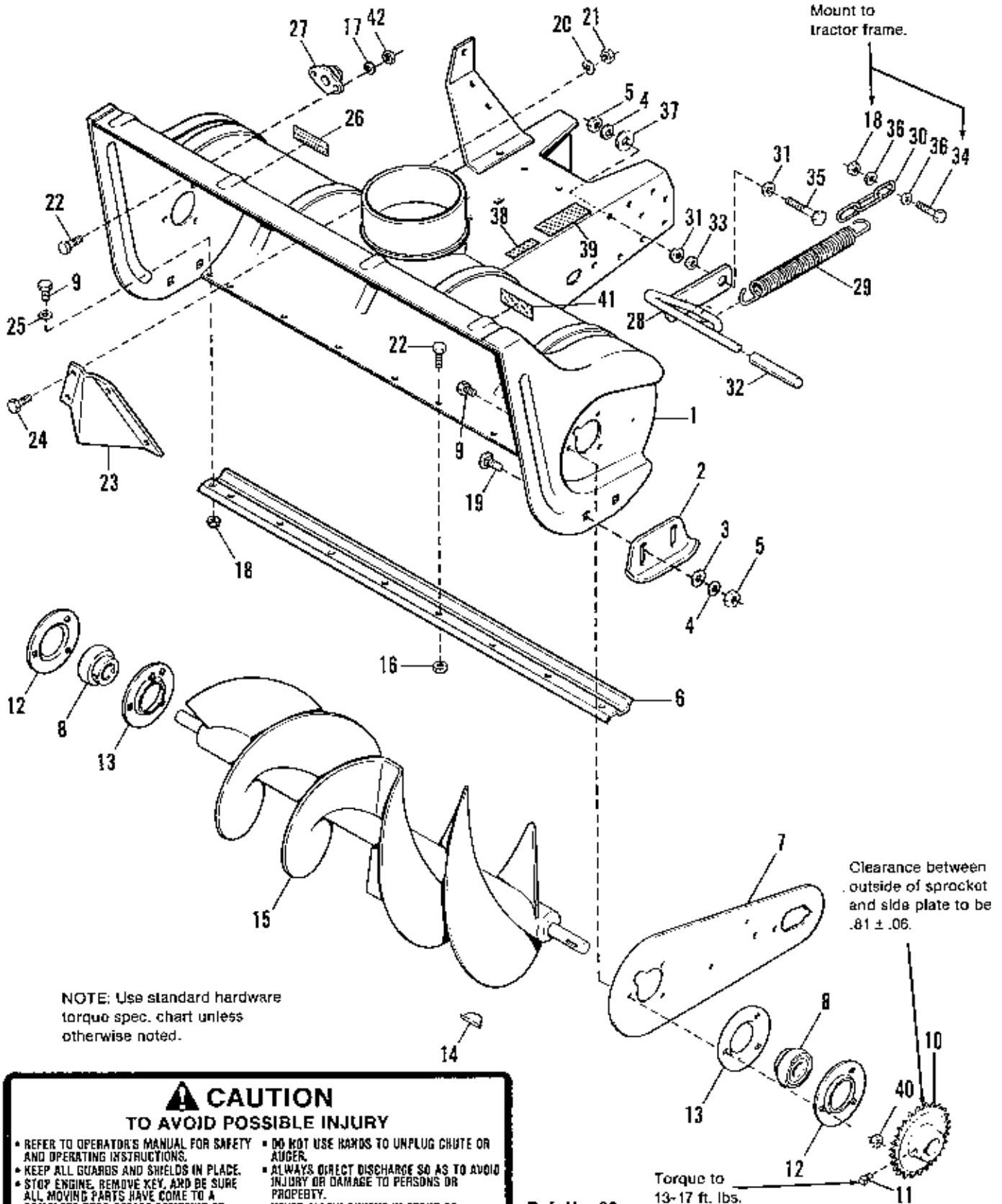
* If a wheel weight is needed order Mfg. No. 1690555. (Incl. Ref. Nos. 1-4.)



NOTE: Use standard hardware torque spec. chart unless otherwise noted.

42" Snow/Dozer Blade

Ref. No.	Part No.	Qty.	Description
1	1709817	1	BLADE ASSY.
2		1	I.D. PLATE
3	1917372	4	NUT, Hex, Full, 5/16-18
4	1675198	2	EYEBOLT
5	101126	2	SPRING, Tension
6	1709818	1	FRAME ASSY., Pivot
7	1922134	2	NUT, Hex Lock, 1/2-13
8	105051	2	SPACER
9	1920328	2	CAPSCREW, Hex, 1/2-13 x 1
10	107106	2	SHOE ASSY.
11	1924940	4	WASHER, Plain, 3/8
12	1916965	10	LOCKWASHER, 3/8
13	1921965	4	CAPSCREW, Hex Hd., 3/8-16 x 3/4
14	107045	1	PLATE, Wear
15	1916950	6	NUT, Hex Full, 3/8-16
16	1931350	6	CARRIAGE BOLT, 3/8-16 x 1



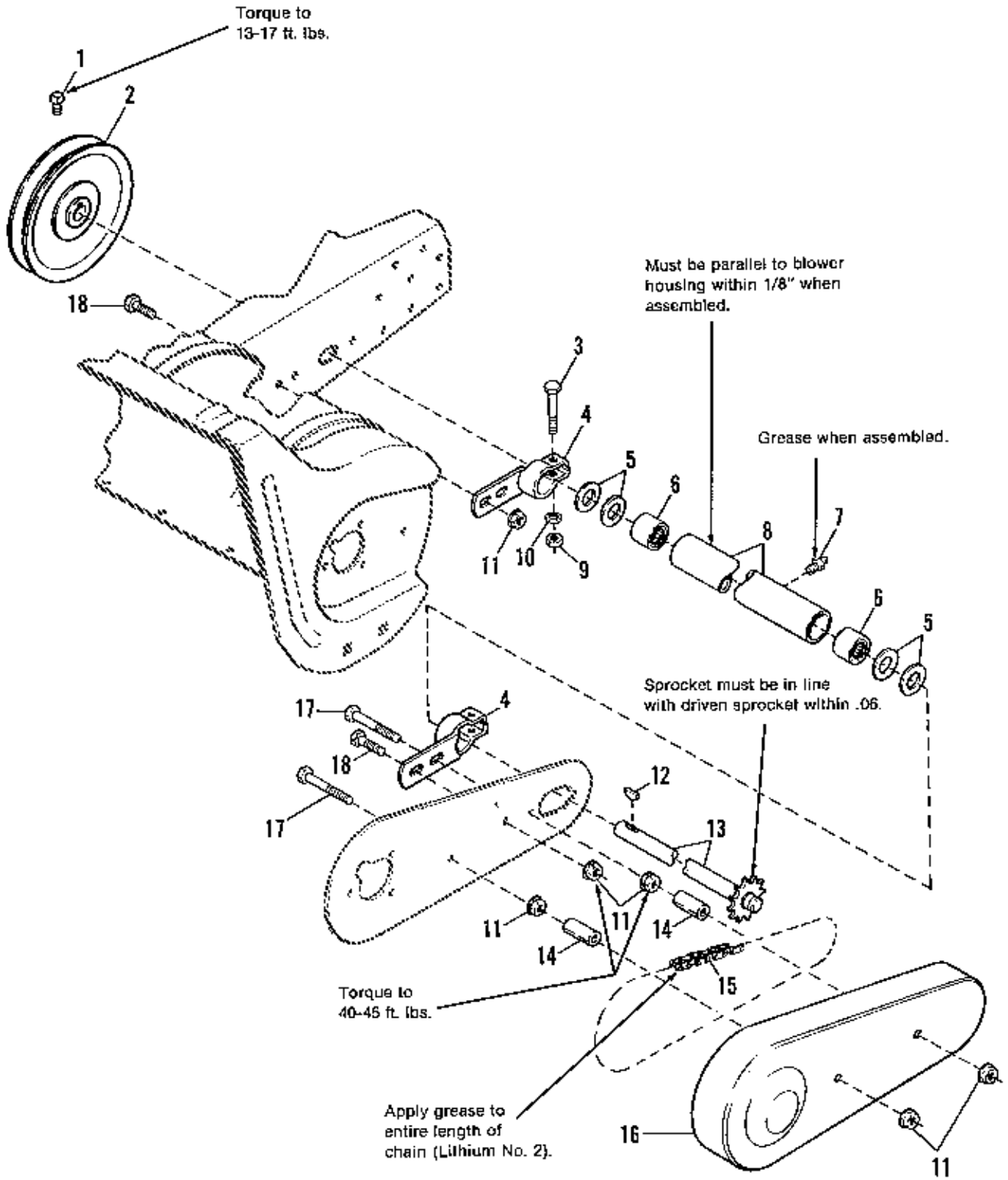
NOTE: Use standard hardware torque spec. chart unless otherwise noted.

CAUTION
TO AVOID POSSIBLE INJURY

- REFER TO OPERATOR'S MANUAL FOR SAFETY AND OPERATING INSTRUCTIONS.
- KEEP ALL GUARDS AND SHIELDS IN PLACE.
- STOP ENGINE, REMOVE KEY, AND BE SURE ALL MOVING PARTS HAVE COME TO A COMPLETE STOP BEFORE SERVICING OR UNPLUGGING.
- DO NOT USE HANDS TO UNPLUG CHUTE OR AUGER.
- ALWAYS DIRECT DISCHARGE SO AS TO AVOID INJURY OR DAMAGE TO PERSONS OR PROPERTY.
- NEVER ALLOW ANYONE IN FRONT OF OPERATING MACHINE.

36" & 42" Snowthrower - Body & Rotor Group

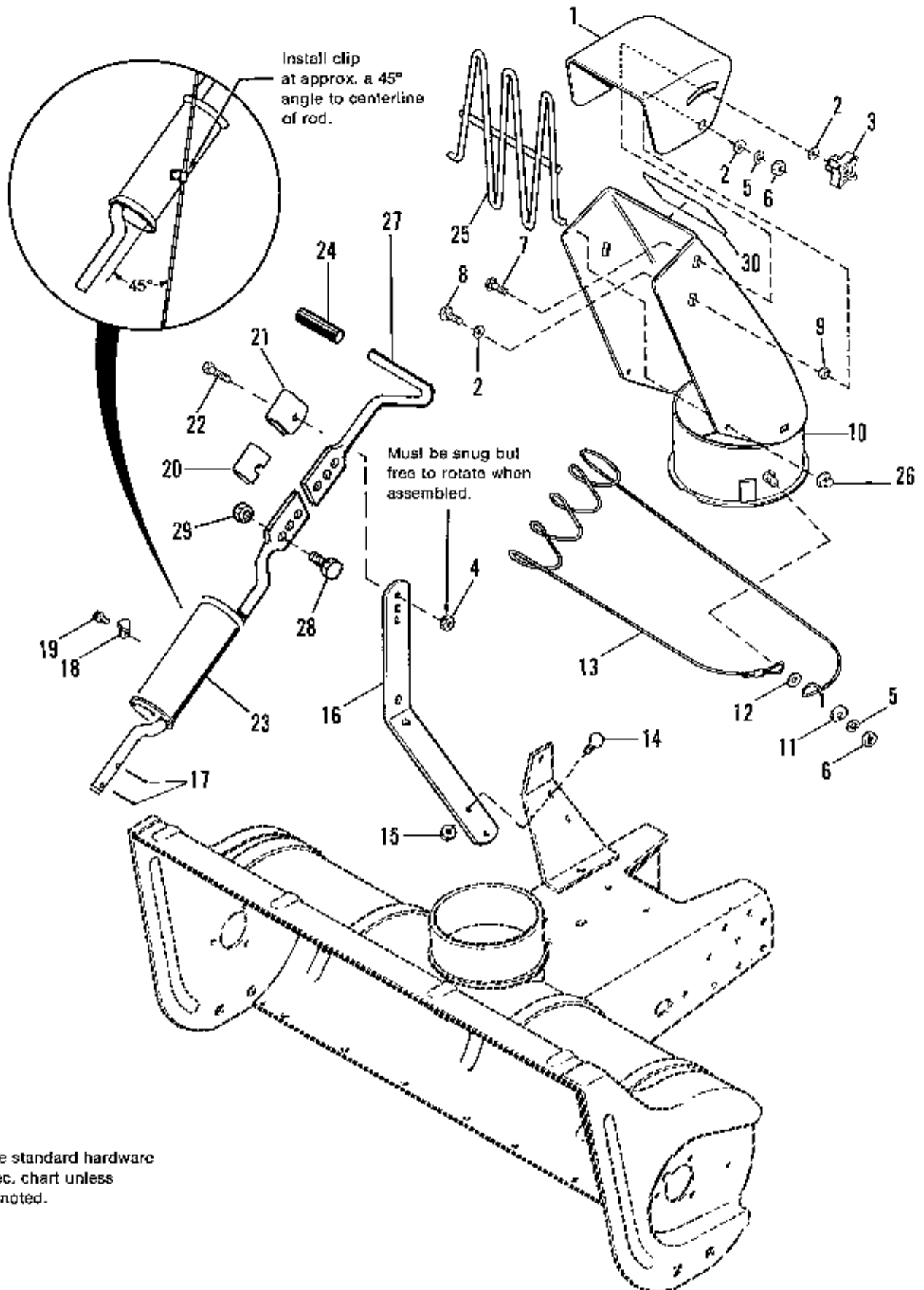
Ref. No.	Part No.	Qty.	Description
1	1713541	1	BODY & FRAME ASSY. (1691521, 36")
	1713342	1	BODY & FRAME ASSY. (1691522, 42")
2	1713524	2	SKID
3	1924940	4	WASHER, Plain, 13/32
4	1916965	5	LOCKWASHER, 3/8
5	1916950	5	NUT, Hex, Full, 3/8-16
6	106863	1	SCRAPER, Body (1691521, 36")
	106746	1	SCRAPER, Body (1691522, 42")
7	1676632	1	PLATE, Side
8	173934	2	BEARING, Cartridge
9	1921332	8	CAPSCREW, Hex, 5/16-18 x 3/4
10	106653	1	SPROCKET, Rotor
11	1928721	1	SETSCREW, 5/16-18 x 5/16
12	172278	2	FLANGE, Bearing
13	172279	2	FLANGE, Bearing
14	151040	1	KEY
15	106856	1	ROTOR ASSY. (1691521, 36")
	106748	1	ROTOR ASSY. (1691522, 42")
16	1923358	7	NUT, Hex, Lock, 1/4-20 (Qty. 8 on 1691522, 42")
17	1916964	2	LOCKWASHER, 1/4
18	1923362	3	LOCKNUT, Hex, 5/16-18
19	1931348	4	CARRIAGE BOLT, 3/8-16 x 3/4
20	1917356	4	LOCKWASHER, 5/16
21	1917372	4	NUT, Hex, Full, 5/16-18
22	1921959	9	CAPSCREW, Hex, 1/4-20 x 5/8 (Qty. 10 on 1691522, 42")
23	106774	1	DEFLECTOR
24	1925205	4	CAPSCREW, Hex, 5/16-18 x 5/8
25	1919326	2	WASHER, Plain, 11/32
26	1679206	1	DECAL, Safety
27	171388	1	BEARING
28	1701917	1	LEVER ASSY.
29	1675232	1	SPRING
30	1656835	1	LINK
31	1924356	2	WASHER
32	176934	1	GRIP
33	108717	1	SPACER
34	1921977	1	CAPSCREW, 5/16-18 x 1-1/4
35	1921969	1	CAPSCREW, Hex, 3/8-16 x 1-1/2
36	1919381	2	WASHER, Plain, 5/16
37	1922755	1	WASHER
38		1	I.D. PLATE
39	1701940	1	DECAL, Caution
40	1935048	6	NUT, Hex, Flange Lock, 5/16-18
41	1677485	1	DECAL, Safety
42	1916622	2	NUT, Hex, 1/4-20



NOTE: Use standard hardware torque spec. chart unless otherwise noted.

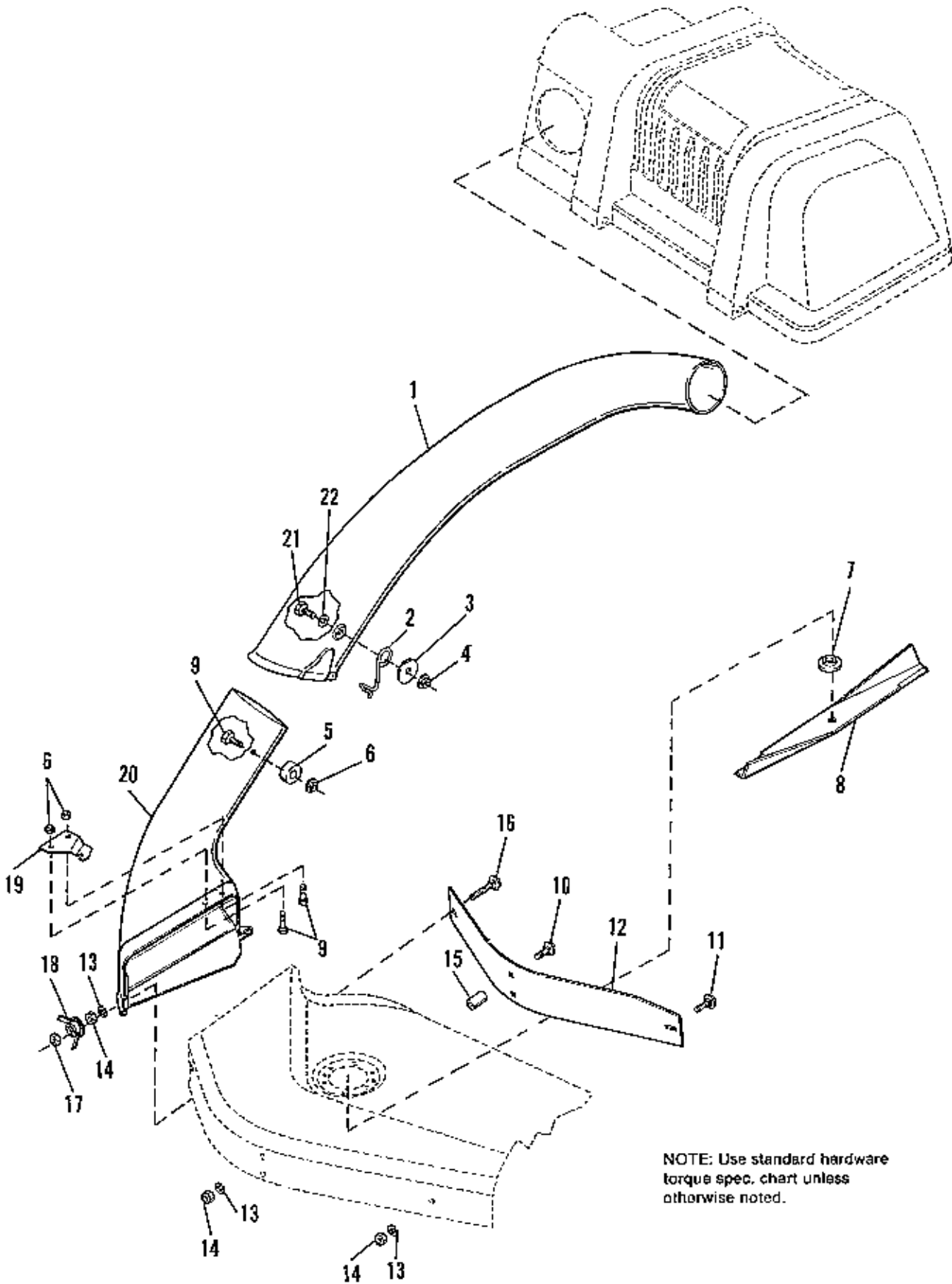
36" & 42" Snowthrower - Drive Group

Ref. No.	Part No.	Qty.	Description
1	1928721	1	SETSCREW, 5/16-18 x 1/2
2	171248	1	PULLEY
3	1922127	2	CAPSCREW, Hex, 5/16-18 x 1-3/4
4	1666145	2	CLAMP
5	8061012	4	WASHER
6	154258	2	BEARING, Needle
7	921133	1	FITTING, Grease
8	1651084	1	HOUSING ASSY., w/Bearings (1691521, 36") (Incl. Ref. No. 6)
	1650955	1	HOUSING ASSY., w/Bearings (1691522, 42") (Incl. Ref. No. 6)
9	1917372	2	NUT, Hex, Full, 5/16-18
10	1917356	2	LOCKWASHER, 5/16
11	1928352	7	LOCKNUT, Flange, 3/8-16
12	905123	1	KEY
13	106860	1	SHAFT ASSY. (1691521, 36")
	106757	1	SHAFT ASSY. (1691522, 42")
14	1669105	2	SPACER
15	171242	1	CHAIN (Auger Drive)
16	1676738	1	GUARD, Chain
17	1960244	2	SCREW, Hex, Whizlock, 3/8-16 x 2-3/4
18	1934654	3	SCREW, Hex, Whizlock, 3/8-16 x 1



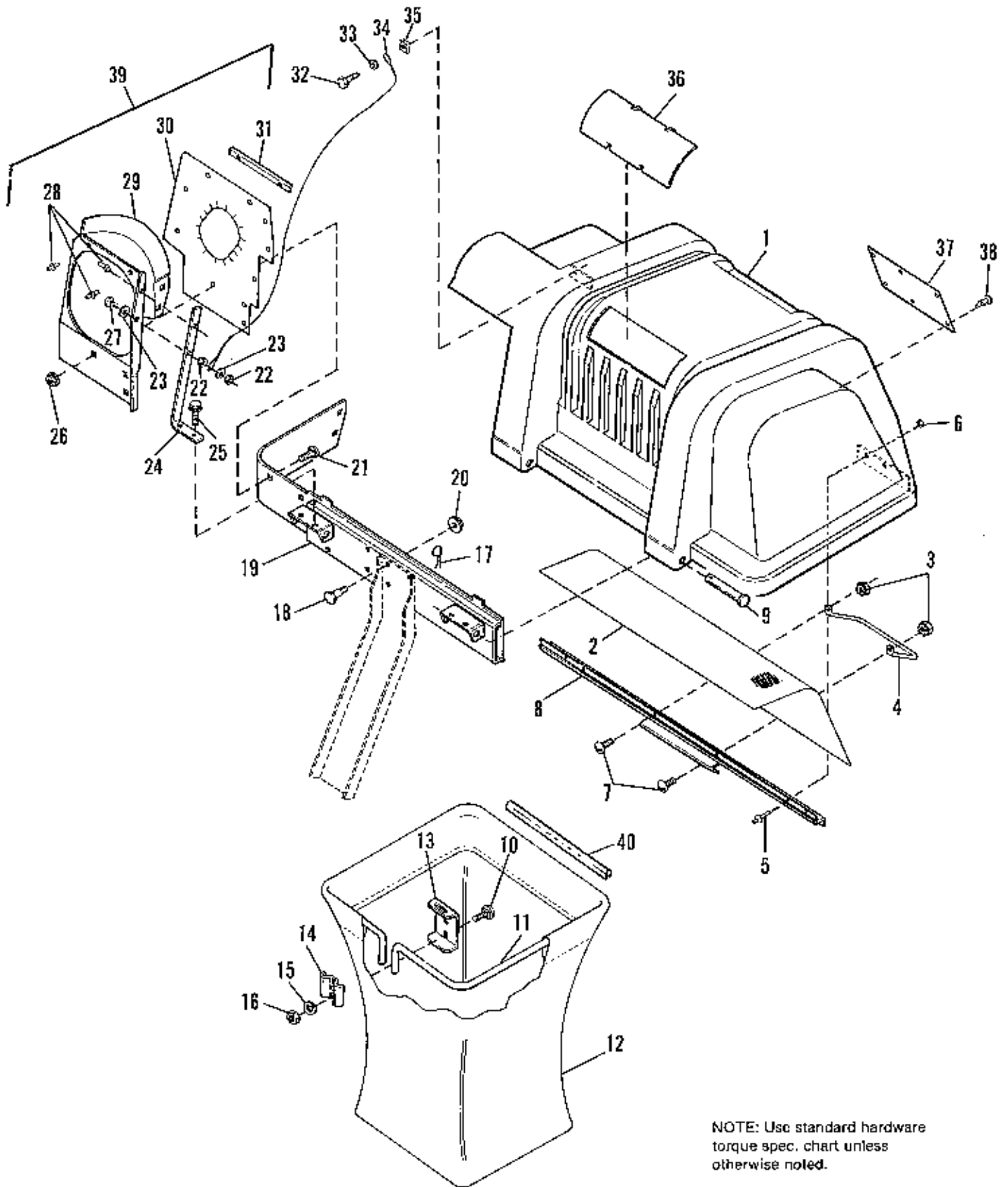
36" & 42" Snowthrower - Spout Group

Ref. No.	Part No.	Qty.	Description
1	1667791	1	DEFLECTOR
2	1919326	3	WASHER, Plain, 5/16
3	1670578	1	KNOB
4	1923362	1	LOCKNUT, Hex, 5/16-18
5	1917356	3	LOCKWASHER, 5/16
6	1917372	3	NUT, Hex, Full, 5/16-18
7	1931335	1	CARRIAGE BOLT, 5/16-18 x 1
8	1936482	2	CAPSCREW, Hex, 5/16-18 x 3/4
9	1667790	2	SPACER
10	1704294	1	CHUTE ASSY.
11	171379	1	WASHER, Cup
12	1919326	1	WASHER, Plain, 5/16
13	171362	1	CABLE ASSY.
14	1921210	2	CAPSCREW, Hex, 3/8-16 x 1
15	1930645	2	NUT, Hex, Flange, 3/8-16
16	1707522	1	ARM, Support
17	1918447	2	COTTER PIN, 3/32 x 3/4
18	171382	1	CLAMP
19	1927428	1	SCREW, Hex, Taplite, 1/4-20 x 3/8
20	121175	1	LINER
21	152050	1	GUIDE, Rod
22	1921221	1	CAPSCREW, Hex, 5/16-18 x 1-1/2
23	1713417	1	ROD ASSY., Spout
24	176933	1	GRIP, Handle
25	1704446	1	GUARD ASSY., Chute
26	1980126	2	PUSH NUT
27	1713419	1	HANDLE, Spout Control
28	1923325	2	CAPSCREW, Hex, 5/16-18 x 7/8
29	1935048	2	NUT, Hex, Flange Lock, 5/16-18
30	1677488	1	DECAL, Blower Housing



Twin Bag Grass Catcher - Adapter, Blade & Tube Group

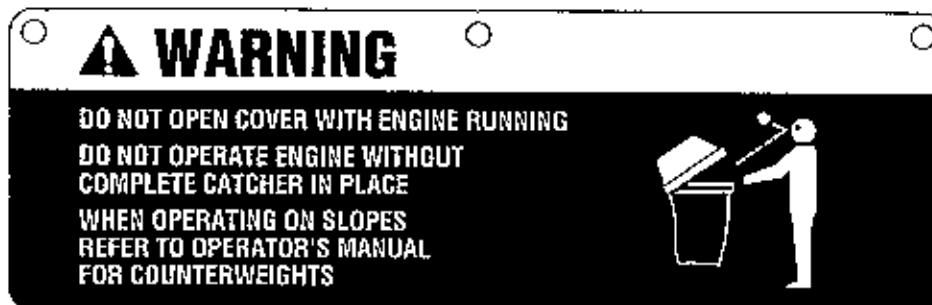
Ref. No.	Part No.	Qty.	Description
1	1703769	1	TUBE, Transfer
2	1704603	1	LATCH, Tube
3	1960185	1	WASHER, Flat
4	1935048	1	NUT, Flange Lock
5	1704341	1	WASHER, Special
6	1919438	3	NUT, Hex, Lock Esna, 5/16-18
7	1705010	1	ADAPTER, Blade, High Lift
8	1704977	1	BLADE, High Lift, 38" Mower
9	1960371	3	CAPSCREW, Hex Hd., 5/16-18 x 3/4
10	1931338	2	CARRIAGE BOLT, 5/16-18 x 1-3/4
11	1931332	1	CARRIAGE BOLT, 5/16-16 x 5/8
12	1703765	1	BAFFLE, 38" Mower
13	1917356	4	LOCKWASHER, 5/16
14	1917372	4	NUT, Hex, 5/16-18
15	1702665	2	SPACER
16	1931339	1	CARRIAGE BOLT, 5/16-18 x 2
17	1928698	1	NUT, Hex, Centerlock, 5/16-18
18	1679163	1	WING NUT ASSY.
19	1704355	1	BRACKET, Attachment
20	1703770	1	ADAPTER
21	1960122	1	CAPSCREW, Hex Hd.
22	1919326	1	WASHER, Flat



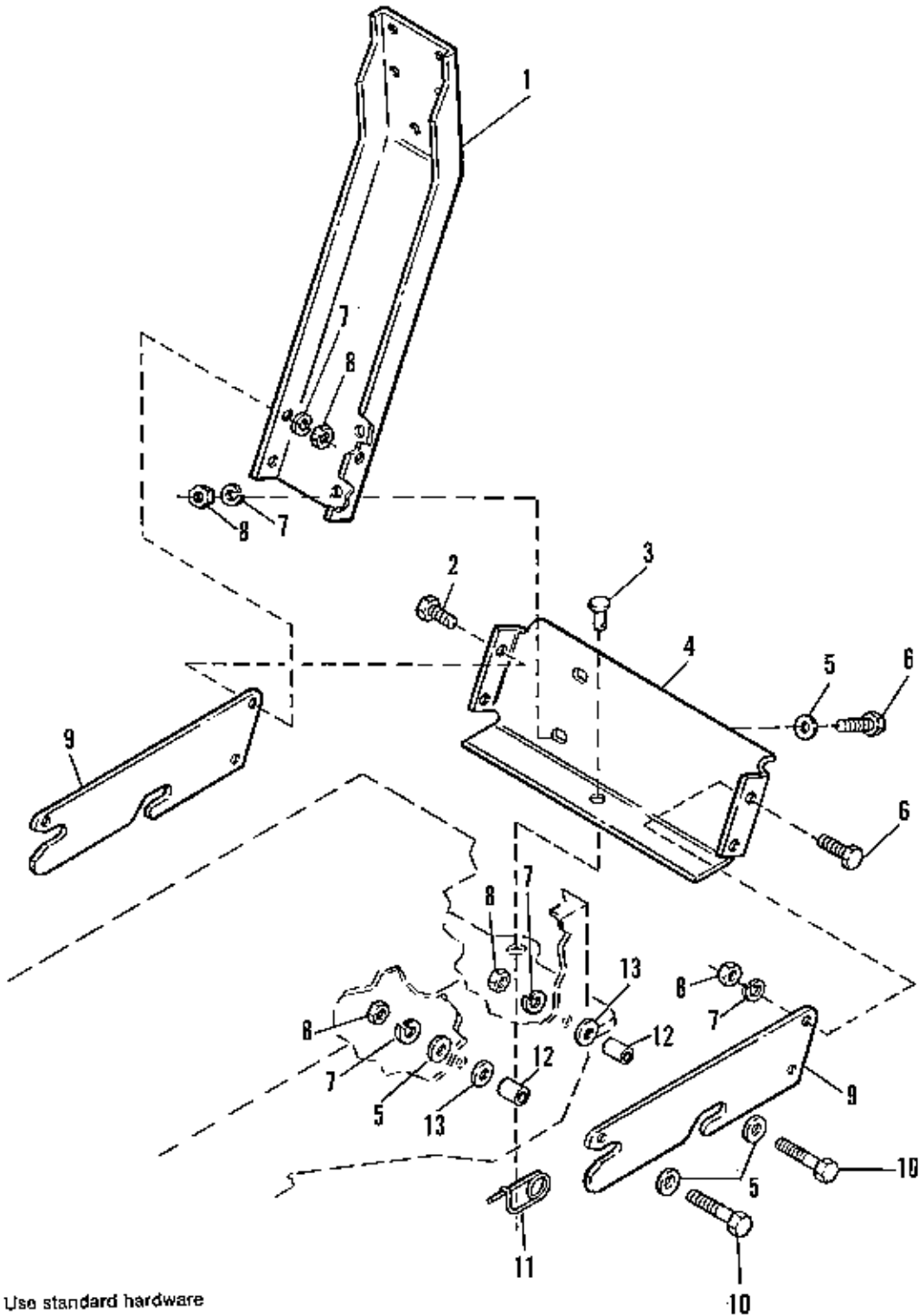
NOTE: Use standard hardware torque spec. chart unless otherwise noted.

Twin Bag Grass Catcher - Cover Group

Ref. No.	Part No.	Qty.	Description
1	1704056	1	COVER ASSY. (Incl. Ref. Nos. 2, 5, 6, 8 & 32-35)
2	1703700	1	SCREEN
3	1928919	2	NUT, Hex, #10-32
4	1703853	1	HANDLE, Latch
5	1675043	4	RIVET, Pop
6	1910531	4	WASHER
7	1930531	2	SCREW, Truss. Hd., #10-32 x 1/2
8	1704057	1	SEAL, Clip
9	960367	2	PIN, Round Head
10	1931333	4	CARRIAGE BOLT, 5/16-18 x 3/4
11	1703855	2	HOOP, Bag
12	1703764	2	BAG, Grass
13	1703807	2	HANGER
14	1672023	2	CLAMP
15	1917356	4	LOCKWASHER, 5/16
16	1917372	4	NUT, Hex, 5/16-18
17	1960221	2	CLIP, Hairpin
18	1921966	4	CAPSCREW, Hex Hd., 3/8-16 x 7/8
19	1703822	1	CROSS ASSY.
20	1928352	4	NUT, Hex, Whizlock, 3/8-16
21	1960252	5	CARRIAGE BOLT, 1/4-20 x 5/8
22	1960077	2	NUT, Hex, Lock, #8-32
23	1960096	2	WASHER
24	1704507	1	STRAP, Tube Support
25	1927428	2	SCREW, Tapite, 1/4-20 x 3/8
26	1930642	5	LOCKNUT, Flange, 1/4-20 End Lock
27	1960399	1	SCREW, Round Hd., #8-32 x 7/8
28	1960381	7	RIVET, Pop
29	1704075	1	SUPPORT, Tube
30	1704135	1	SEAL, Cover
31	1704508	3	BRACKET SEAL
32	1960400	1	SCREW, Self Tapping, #10-12 x 5/8
33	1921319	1	WASHER, Plain, 1/4
34	1705876	1	CABLE, Double Loop
35	1933886	1	NUT, Speed
36	1704180	2	WINDOW
37	1704405	1	DECAL, Safety
38	1667248	6	CLIP, Canoe
39	1704075	1	TUBE SUPPORT ASSY. (Incl. Ref. Nos. 22, 23, 24 & 27-31)
40	1675707	2	CLIP, Tube



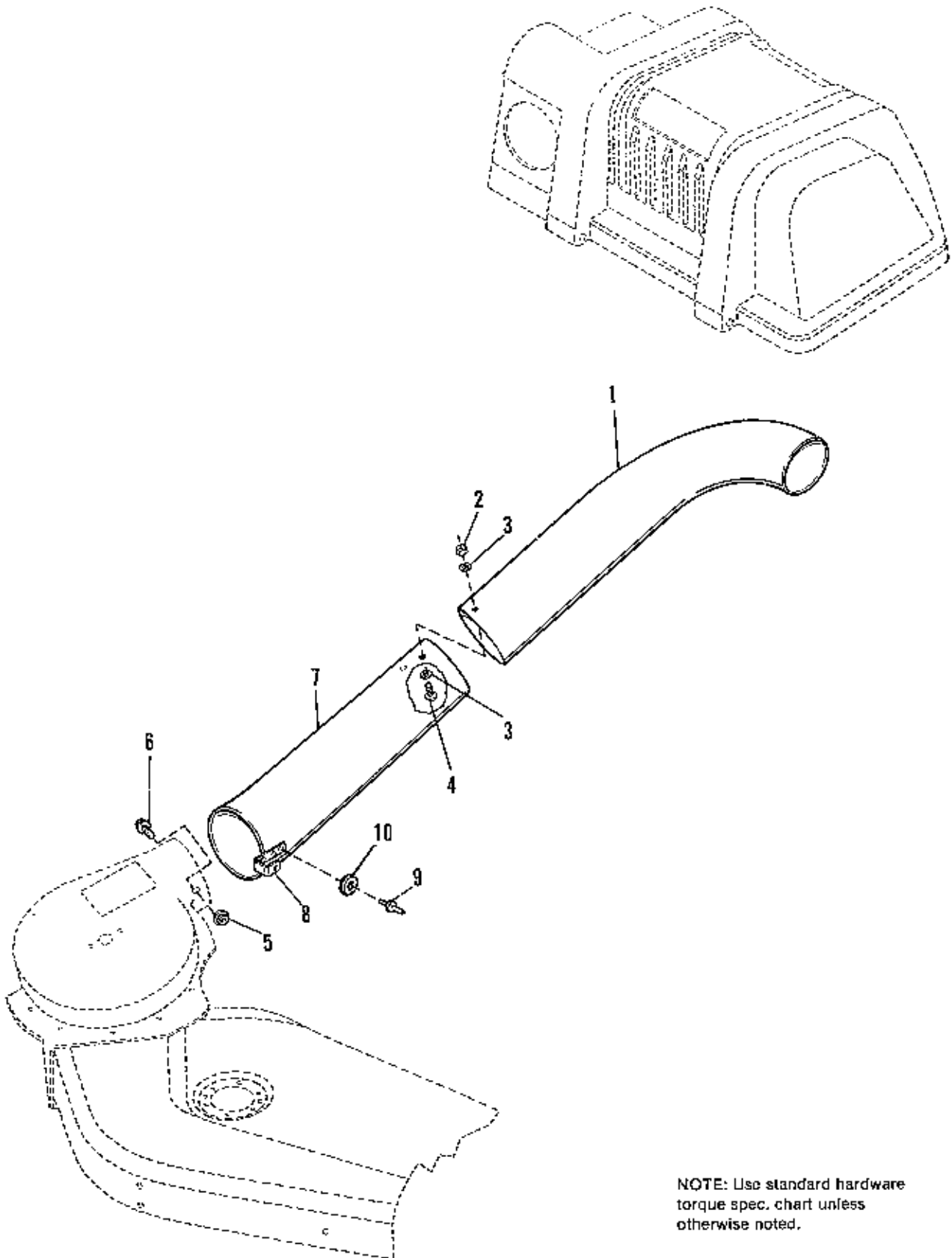
Ref. No. 37



NOTE: Use standard hardware torque spec. chart unless otherwise noted.

Twin Bag Grass Catcher - Hitch Group

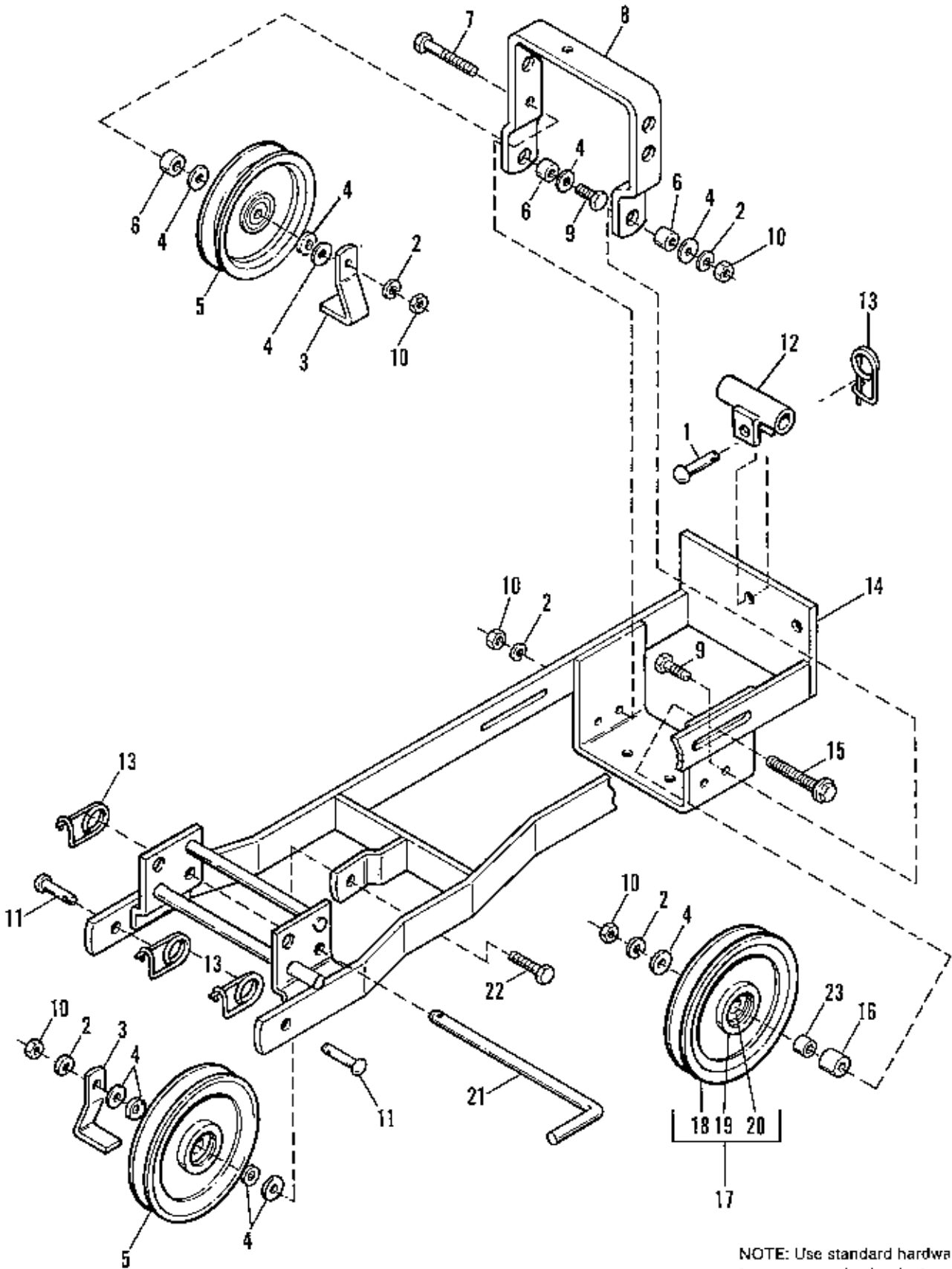
Ref. No.	Part No.	Qty.	Description
1	1703745	1	SUPPORT, Upright
2	1920415	2	CAPSCREW, Hex Hd., 3/8-16 x 1-1/4
3	102004	1	PIN, Round Hd.
4	1703744	1	BRACKET, Lower Hitch
5	1924940	8	WASHER
6	1921210	4	CAPSCREW, Hex Hd., 3/8-16 x 1
7	1916965	10	LOCKWASHER, Spring, 3/8
8	1916950	10	NUT, Hex, 3/8-16
9	1703743	2	SUPPORT, Side Hitch
10	1921971	4	CAPSCREW, Hex Hd., 3/8-16 x 1-3/4
11	176012	1	CLIP, Safety Pin
12	1665699	4	SPACER
13	1919384	4	WASHER



NOTE: Use standard hardware torque spec. chart unless otherwise noted.

Turbo Twin Bag Grass Catcher - Tube Group

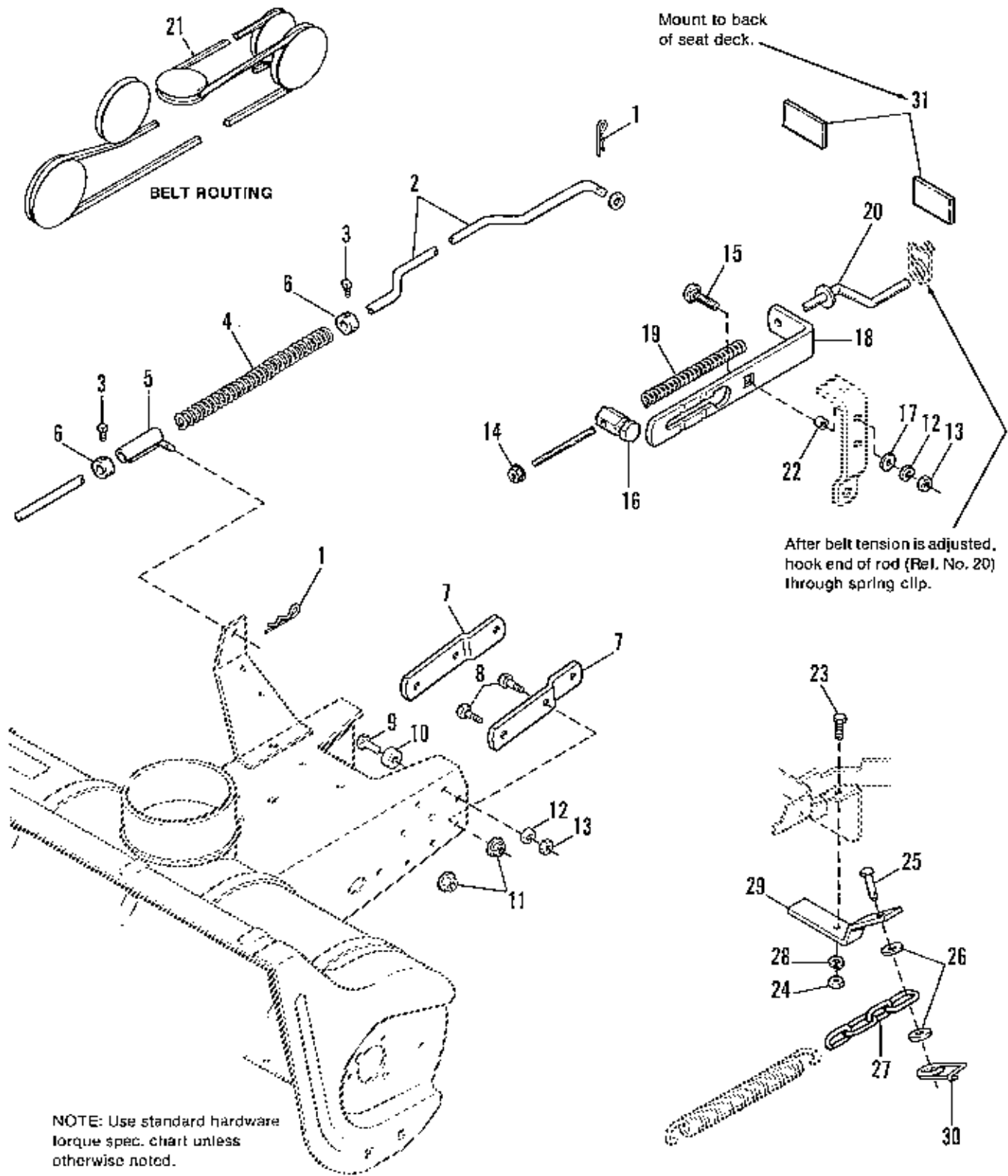
Ref. No.	Part No.	Qty.	Description
1	1704283	1	TUBE, Upper
2	1928919	2	NUT, Hex
3	1910531	4	WASHER, Plain
4	1930531	2	SCREW, Truss Hd., #10-32 x 1/2
5	1930641	1	NUT, Hex, Flange Lock, 1/4-20
6	1960252	1	CARRIAGE BOLT, 1/4-20 x 5/8
7	1707712	1	TUBE ASSY., Lower (Incl. Ref. Nos. 8, 9 & 10)
8	1705063	1	CLIP, Spring
9	910542	2	RIVET, Pop
10	1910531	2	WASHER



NOTE: Use standard hardware torque spec. chart unless otherwise noted.

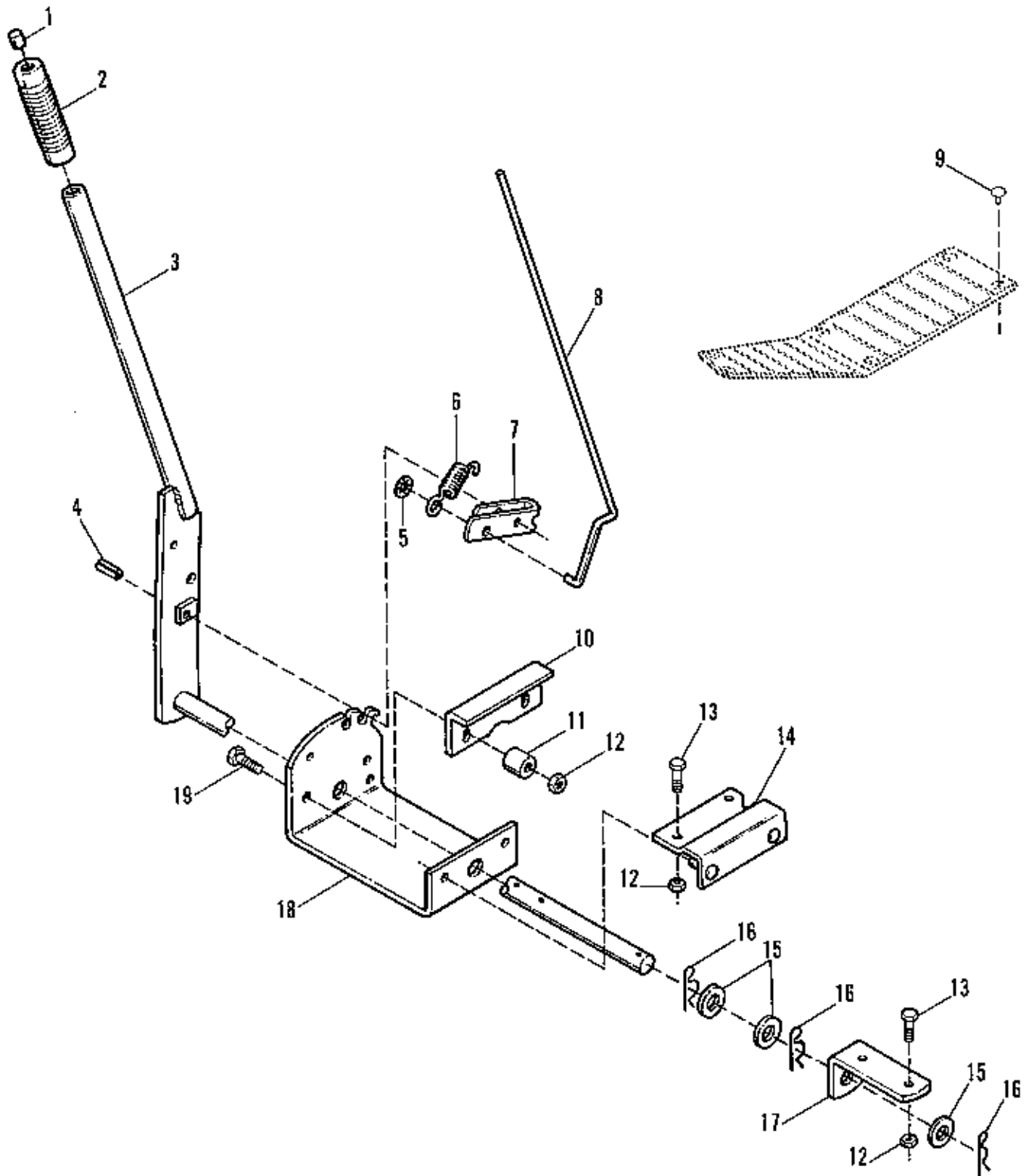
36" & 42" Snowthrower Hitch - Hitch Group

Ref. No.	Part No.	Qty.	Description
1	105249	1	PIN, Clevis
2	1916965	4	LOCKWASHER, 3/8
3	162115	2	BELT STOP
4	1924940	10	WASHER, Plain, 5/16
5	171247	2	PULLEY
6	158227	3	SPACER
7	1922130	1	CAPSCREW, 3/8- 16 x 2-1/4
8	1704731	1	PIVOT, Bracket
9	1920415	2	CAPSCREW, 3/8-16 x 1-1/4
10	1916950	5	NUT, Hex, Full, 3/8-16
11	156306	2	PIN, Clevis, 3/8
12	1707455	1	SUPPORT ARM., Rear
13	176012	4	CLIP, Spring
14	1704703	1	PUSHBAR ASSY.
15	1960244	1	SCREW, Whizlock, 3/8-16 x 2-3/4
16	1704732	1	SPACER
17	1666287	1	PULLEY ASSY., w/Bearing (Incl. Ref. Nos. 18, 19, 20)
18		1	PULLEY (Order Ref. No. 17)
19	927695	1	RING, Retaining
20	1705897	1	BEARING
21	1704707	1	ROD, Latch
22	1921971	1	CAPSCREW, 3/8-16 x 1-3/4
23	1666294	1	SPACER



36" & 42" Snowthrower Hitch - Bracket & Lift Rod Group

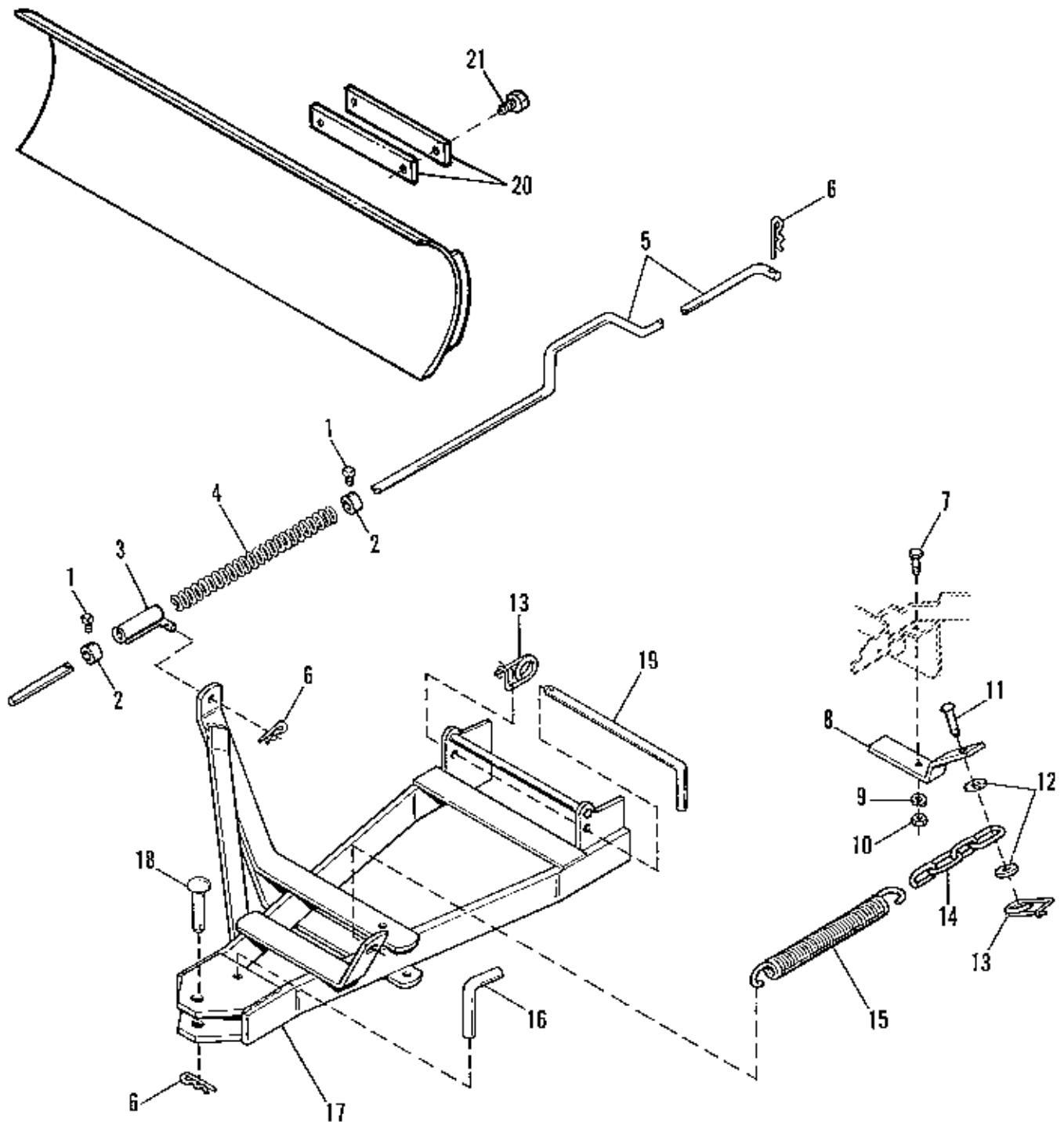
Ref. No.	Part No.	Qty.	Description
1	1960033	2	CLIP, Spring
2	1665887	1	ROD, Lift
3	1928721	2	SETSCREW, 5/16 x 1/2
4	171011	1	SPRING
5	171679	1	GUIDE ASSY., Rod
6	8031007	2	COLLAR, Set
7	177565	2	CLIP, Frame
8	1920676	4	CAPSCREW, Hex, 7/16 x 1
9	1920415	2	CAPSCREW, 3/8-16 x 1-1/4
10	174242	2	SPACER
11	1930650	4	LOCKNUT, Hex, Flange, 7/16-14
12	1916965	3	LOCKWASHER
13	1916950	3	NUT, Hex, Full, 3/8-16
14	1930651	1	LOCKNUT, Hex, Full, 3/8-16
15	1960268	1	CARRIAGE BOLT, 3/8-16 x 1-1/4
16	1704743	1	TRUNNION
17	1924940	1	WASHER, Plain, 5/16
18	1705838	1	GUIDE, Spring
19	1668282	1	SPRING
20	1704741	1	ROD ASSY., Adjustment
21	1678241	1	BELT
22	158227	1	SPACER
23	1921333	1	CAPSCREW, Hex, 5/16-18 x 1
24	1917372	1	NUT, Hex, Full, 5/16-18
25	1655651	1	PIN, Hitch
26	1919381	2	WASHER, Plain
27	1669241	1	CHAIN, 4-Link
28	1917356	1	LOCKWASHER, 5/16
29	1704757	1	BRACKET, Spring Anchor
30	176012	1	CLIP, Spring
31	1701600	2	REFLECTOR



NOTE: Use standard hardware torque spec. chart unless otherwise noted.

Manual Lift Lever

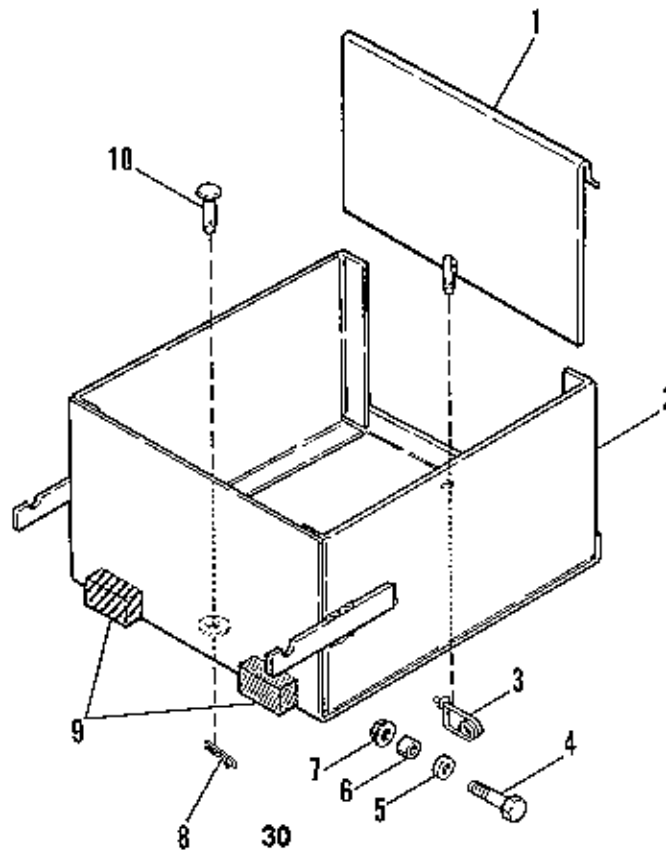
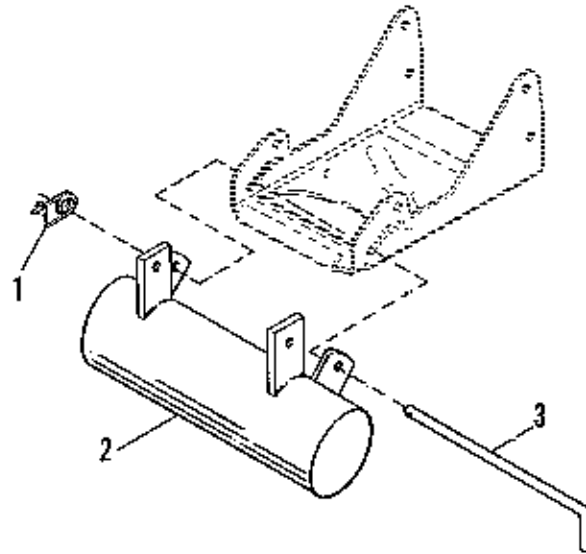
Ref. No.	Part No.	Qty.	Description
1	1650157	1	BUTTON
2	156209	1	GRIP
3	1704718	1	LIFT LEVER ASSY.
4	1927609	1	ROLL PIN
5	1934953	1	PUSHNUT
6	1667286	1	SPRING
7	1657648	1	LEVER LATCH
8	1667290	1	LATCH ROD
9	1704351	4	FASTENER
10	1704715	1	LIFT BRACKET GUIDE
11	1704716	2	SPACER
12	1919438	6	NUT, Hex, 5/16-18
13	1923325	4	CAPSCREW, Hex Hd., 5/16-18 x 7/8
14	1704713	1	BRACKET, Lift Assy.
15	1911386	3	WASHER, Flat
16	1960033	3	CLIP
17	1704712	1	BRACKET, Lift Pivot
18	1665591	1	LIFT QUADRANT
19	1921977	2	CAPSCREW, Hex Hd, 5/16-18 x 1-1/4



NOTE: Use standard hardware torque spec. chart unless otherwise noted.

42" Snow/Dozer Blade Hitch

Ref. No.	Part No.	Qty.	Description
1	1928721	2	SETSCREW, 5/16-18 x 1/2
2	8031007	2	COLLAR, Set
3	171679	1	GUIDE ASSY, Rod
4	171011	1	SPRING
5	1685887	1	ROD, Lift (Mfg. No. 1691833 Only)
	1707542	1	ROD, Lift (Mfg. No. 1692039 Only)
6	1960033	3	CLIP, Spring
7	1921333	1	CAPSCREW, Hex, 5/16-18 x 1
8	1704757	1	BRACKET, Spring Anchor
9	1917356	1	LOCKWASHER, 5/16
10	1917372	1	NUT, Hex, Full, 5/16-18
11	1655651	1	PIN, Hitch
12	1919381	2	WASHER, Plain, 5/16
13	176012	2	CLIP, Safety
14	1669241	1	CHAIN, 4-Link
15	1675232	1	SPRING
16	1678549	1	PIN, Pivot
17	1708115	1	PUSH BAR ASSY.
18	1603602	1	PIN, King
19	1704707	1	ROD, Latch
20	1709813	2	BAR STOP (Mfg. No. 1692039 Only)
21	1960373	2	SCREW, Hex, Taptite, 5/16-18 x 1 (Mfg. No. 1692039 Only)



NOTE: Use standard hardware torque spec. chart unless otherwise noted.

Mfg. No. 1691837

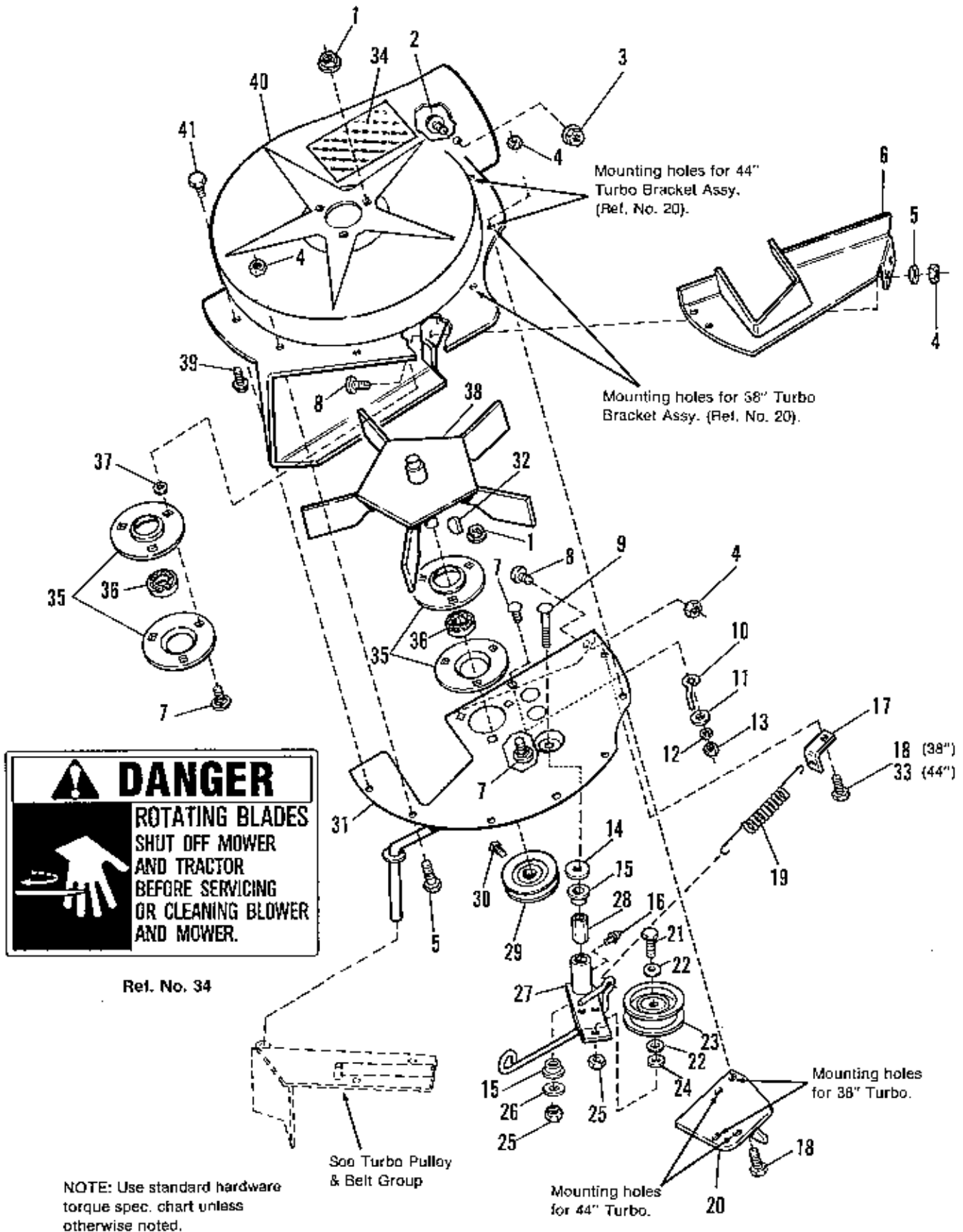
Front Counterweight

Ref. No.	Part No.	Qty.	Description
1	176012	1	SAFETY CLIP
2		1	WEIGHT ASSY. (Order Wholegoods 1691837) (Incl. Ref. Nos. 1 - 3)
3	1704792	1	ROD, Hitch

Mfg. No. 1691838, 1692102

Weight Box

Ref. No.	Part No.	Qty.	Description
1	1668404	1	DOOR
2		1	WEIGHT BOX(Order Wholegoods 1691838 or 1692102) (Incl. Ref. Nos. 1 - 10)
3	176012	1	SAFETY CLIP
4	1920415	2	CAPSCREW, 3/8-16 x 1-1/4
5	1924940	2	WASHER
6	158227	2	SPACER
7	1928352	2	NUT, Whizlock, 3/8-16
8	1960033	1	CLIP
9	1713337	2	FOAM PADS (Mfg. No. 1691838 Oni
10	102004	1	PIN

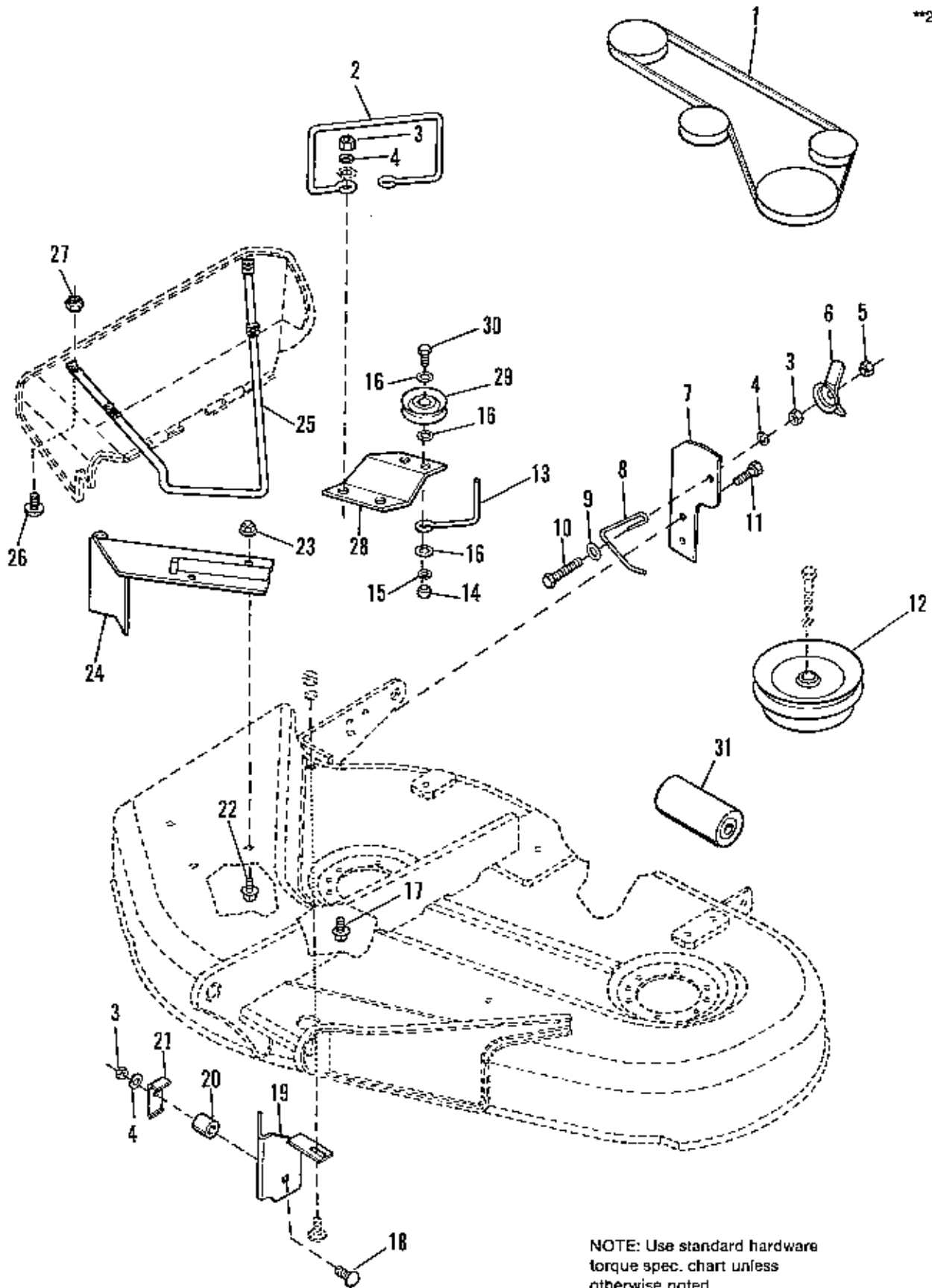


⚠ DANGER

ROTATING BLADES
SHUT OFF MOWER
AND TRACTOR
BEFORE SERVICING
OR CLEANING BLOWER
AND MOWER.

38" & 44" Turbo Assy. - Housing Group

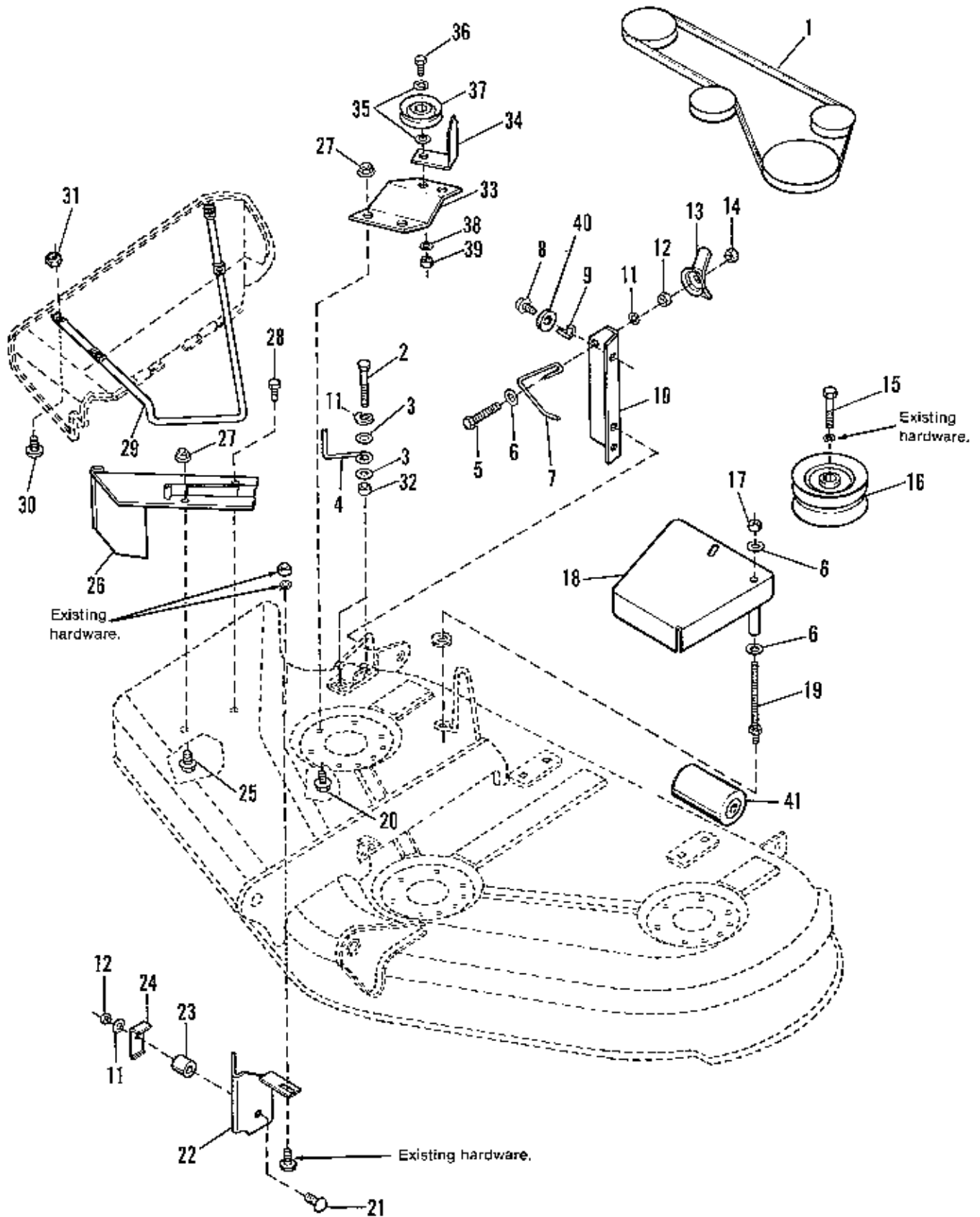
Ref. No.	Part No.	Qty.	Description
1	1935048	6	NUT, Flange, Whitlock, 5/16-18
2	1960252	1	CARRIAGE BOLT, 1/4-20 x 5/8
3	1920397	9	NUT, Hex, Nylock, 1/4-20
4	1930641	1	NUT, Hex, Flange Lock, 1/4-20
5	1921959	3	CAPSCREW, Hex, 1/4-20 x 5/8 (Qty. 4 on Mfg. No. 1691868, 44")
6	1705267	1	PLATE, Cover
7	1931333	9	CARRIAGE BOLT, 5/16-18 x 3/4 (Qty 8 on Mfg. No. 1691868, 44")
8	1960472	2	SCREW, Truss Hd., 1/4-18 x 5/8
9	1931355	1	CARRIAGE BOLT, 3/8-16 x 2-1/4
10	1678435	1	BELT STOP
11	1924874	1	WASHER, Flat
12	1917356	1	WASHER, Spring Lock, 5/16
13	1917372	1	NUT, Hex, 5/16
14	1924361	1	WASHER, Flat
15	1676148	2	BUSHING
16	1704314	1	FITTING, Grease
17	1668500	1	BRACKET, Anchor, Spring
18	1923341	3	CAPSCREW, Hex Hd., 1/4-20 x 3/4 (Qty. 2 on Mfg. No. 1691868, 44")
19	1657499	1	SPRING, Tension
20	1704983	1	BRACKET ASSY., Turbo
21	1920415	1	CAPSCREW, Hex Hd., 3/8-16 x 1-1/4
22	1924940	2	WASHER, Plain
23	1708030	1	IDLER PULLEY ASSY.
24	1933263	1	WASHER, Flat
25	1960251	2	NUT, Hex, Jam, Center Lock, 3/8-16
26	1924940	1	WASHER, Flat
27	1706284	1	LEVER ASSY, Turbo (Incl. Ref. Nos. 15 & 16)
28	1676833	1	SPACER
29	1706634	1	PULLEY, Driven
30	1928691	1	SETSCREW, Hex, Socket Hd., 5/16-18 x 5/16
31	1706465	1	PLATE ASSY.
32	960403	1	KEY, Woodruff, Modified
33	1924009	1	CAPSCREW, Hex Hd., 1/4-20 x 7/8 (Mfg. No. 1691868 Only)
34	1700259	1	DECAL, Danger, Blower
35	1665982	4	BEARING, Retainer
36	108202	2	BEARING
37	1933988	3	PUSH NUT, 3/8
38	1706631	1	FAN ASSY., 5 Blade
39	1960256	1	SCREW, Truss Hd., 1/4-18 x 1/4
40	1705492	1	FAN HOUSING (Incl. Ref. No. 34)
41	1925003	1	CAPSCREW, Hex, Tapite, 1/4-20 x 1/2 Mfg. No. 1691868 Only)



NOTE: Use standard hardware torque spec. chart unless otherwise noted.

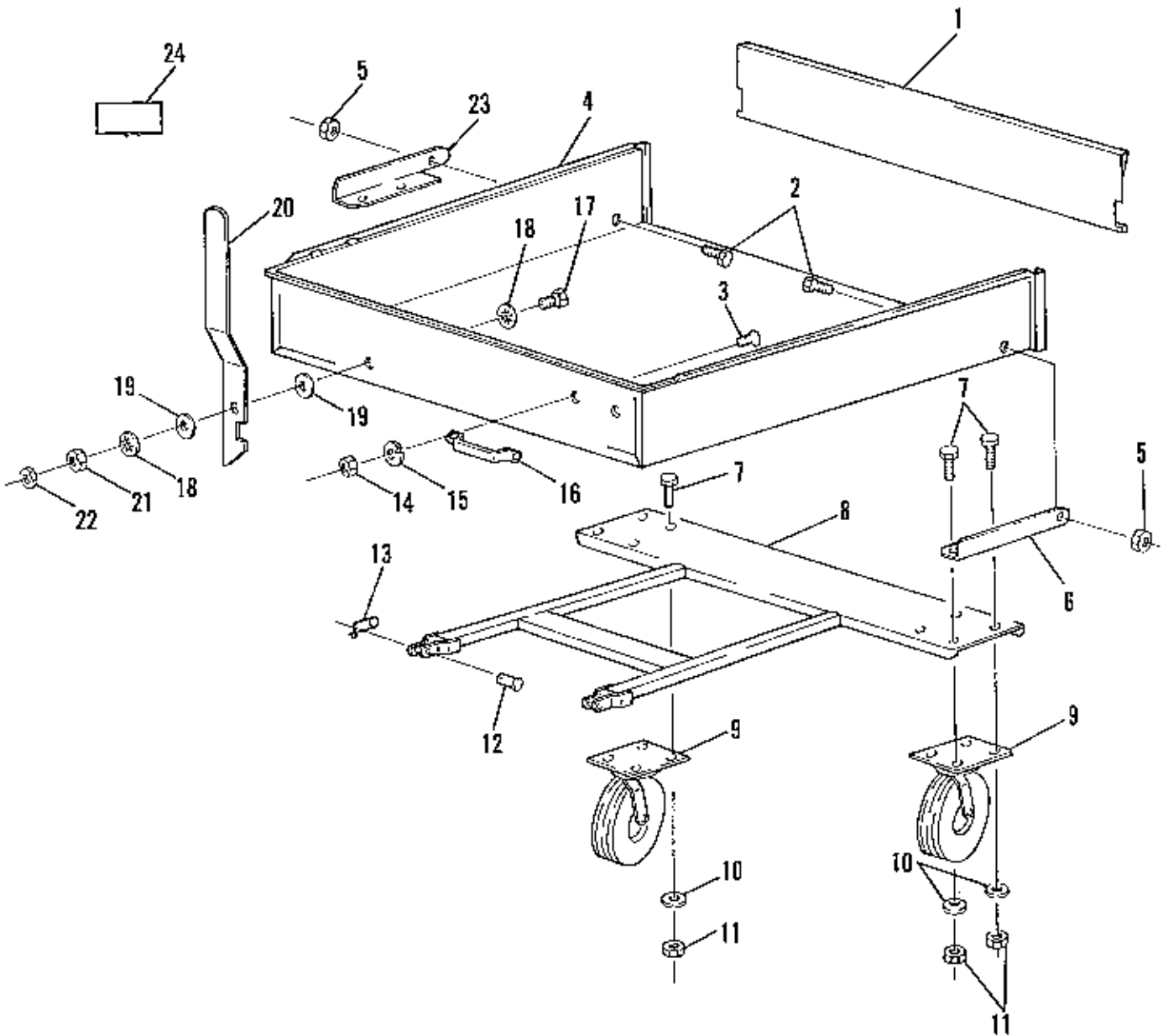
38" Turbo Assy. - Arbor & Deflector Group

Ref. No.	Part No.	Qty.	Description
1	1705141	1	BELT
2	1704789	1	BELT GUIDE, Turbo
3	1917372	4	NUT, Hex, 5/16-18
4	1917356	4	LOCKWASHER, 5/16
5	1923362	1	NUT, Hex, Center Lock, 5/16-18
6	1679163	1	NUT, Wing Assy, 5/16
7	1704799	1	BRACE, 38"
8	1705064	1	SPRING LATCH
9	1919381	1	WASHER, Flat
10	1960318	1	CAPSCREW, Hex Hd, 5/16-18 x 2-1/2
11	1924856	2	SCREW, Taptite, 5/16-18 x 1/2
12	1704769	1	PULLEY ASSY., Turbo
13	172845	1	BELT STOP
14	1916950	1	NUT, Hex, 3/8-16
15	1916965	1	LOCKWASHER, 3/8
16	1924940	3	WASHER, Flat, 3/8
17	1930600	2	SCREW, Taptite, 5/16-18 x 1-1/2
18	1960223	1	CARRIAGE BOLT, 5/16-18 x 1-1/4
19	1704881	1	BRACKET ASSY., Cut-off
20	1666294	1	SPACER
21	1705308	1	BRACKET,"L"
22	1931333	2	CARRIAGE BOLT, 5/16-18 x 3/4
23	1931277	2	NUT, Hex, Flange, Whizlock, 5/16-18
24	1705066	1	PIVOT ASSY., 38"
25	1705716	1	ROD, Deflector
26	1960404	4	SCREW, Truss Hd., #10-24 x 3/4
27	1933896	4	NUT, Nylock, #10-24
28	1704768	1	BRACKET, Idler, Turbo
29	1705044	1	PULLEY ASSY., Idler
30	1921971	1	CAPSCREW, 3/8-16 x 1-1/4
31	1713540	1	ROLLER



44" Turbo Assy. - Arbor & Deflector Group

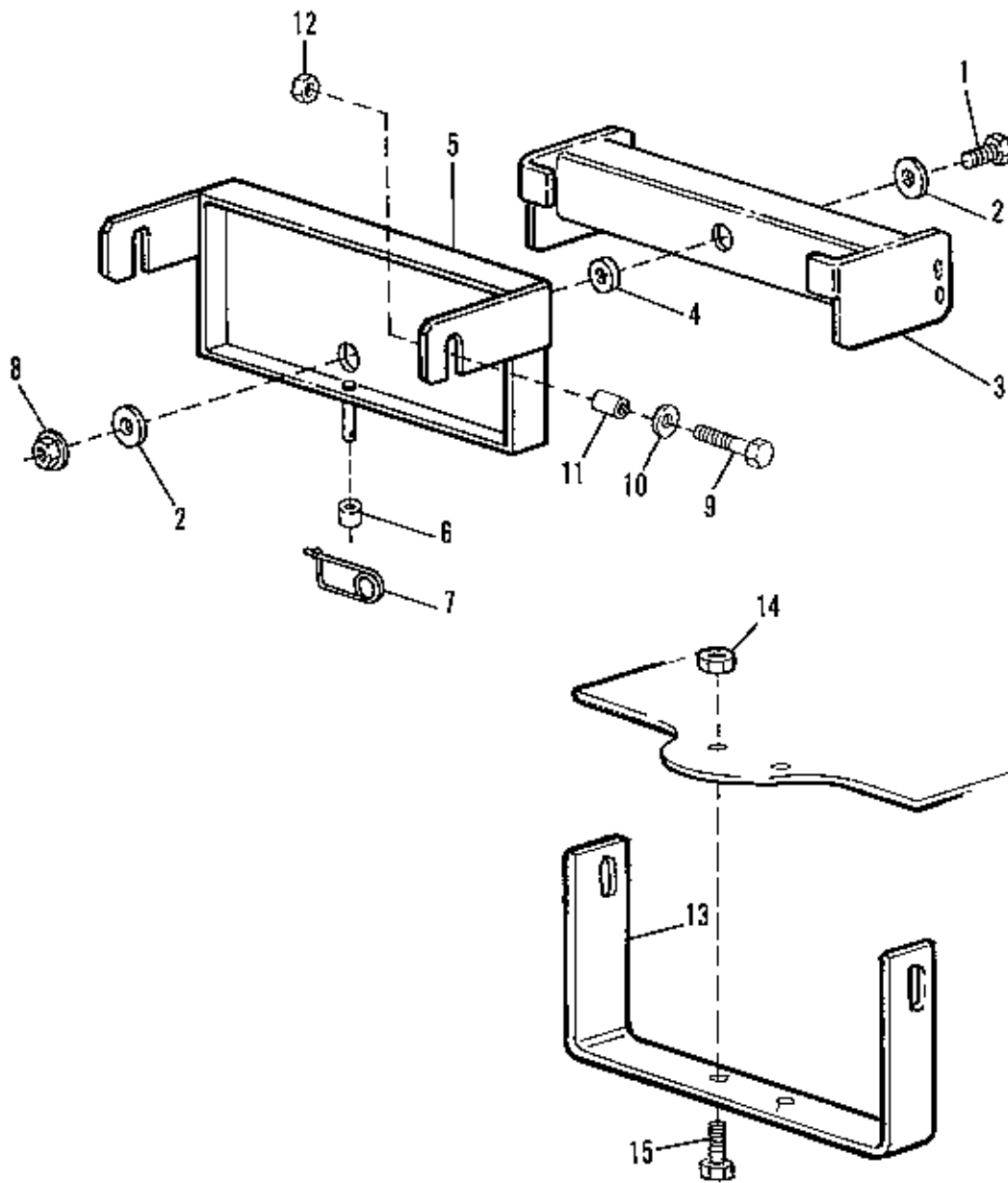
Ref. No.	Part No.	Qty.	Description
1	1705142	1	BELT
2	1921221	1	CAPSCREW, 5/16-18 x 1-1/2
3	1919326	2	WASHER, Flat
4	172845	1	BELT STOP
5	1960318	1	CAPSCREW, Hex Hd., 5/16-18 x 2-1/2
6	1919381	3	WASHER, Flat
7	1705064	1	SPRING LATCH
8	1925003	1	SCREW, Taptite, 1/4-20 x 1/2
9	1678435	1	BELT STOP
10	1704982	1	ANCHOR, Turbo, 44"
11	1917356	2	LOCKWASHER, 5/16
12	1917372	2	NUT, Hex, 5/16-18
13	1679163	1	NUT, Wing Assy., 5/16
14	1923362	1	NUT, Hex, Centerlock, 5/16-18
15	1927531	1	CAPSCREW, Hex Hd., 7/16-14 x 2
16	1704796	1	PULLEY ASSY., Turbo, 44"
17	1919438	1	NUT, Hex, Nylock
18	1705279	1	SHIELD ASSY., Belt
19	1705123	1	STUD, 5/16-18 x 5-13/64
20	1923325	2	CAPSCREW, Hex Hd., 5/16-18 x 7/8
21	1960223	1	CARRIAGE BOLT, 5/16-18 x 1-1/4
22	1704880	1	BRACKET ASSY., Cut-off
23	1666294	1	SPACER
24	1705308	1	BRACKET,"L"
25	1931333	1	CARRIAGE BOLT, 5/16-18 x 3/4
26	1705070	1	PIVOT ASSY., 44"
27	1931277	3	NUT, Hex, Flange, Whizlock, 5/16-18
28	1931648	1	SCREW, Hex, Whizlock, 5/16-18 x 1/2
29	1705716	1	ROD, Deflector
30	1960404	4	SCREW, Truss Hd.
31	1933896	4	NUT, Nylock, #10-24
32	1710703	1	SPACER
33	1704768	1	BRACKET, Idler, Turbo
34	1705277	1	LATCH, Belt Cover
35	1924940	2	WASHER, Flat
36	1921969	1	CAPSCREW, 3/8-16 x 1-1/2
37	1705044	1	PULLEY ASSY., Idler
38	1916965	1	LOCKWASHER, 3/8
39	1916950	1	NUT, Hex, 3/8-16
40	1921319	1	WASHER, Flat, 1/4
41	1713540	1	ROLLER



NOTE: Use standard hardware torque spec. chart unless otherwise noted.

Quad Bagger Dump Cart - Cart Group

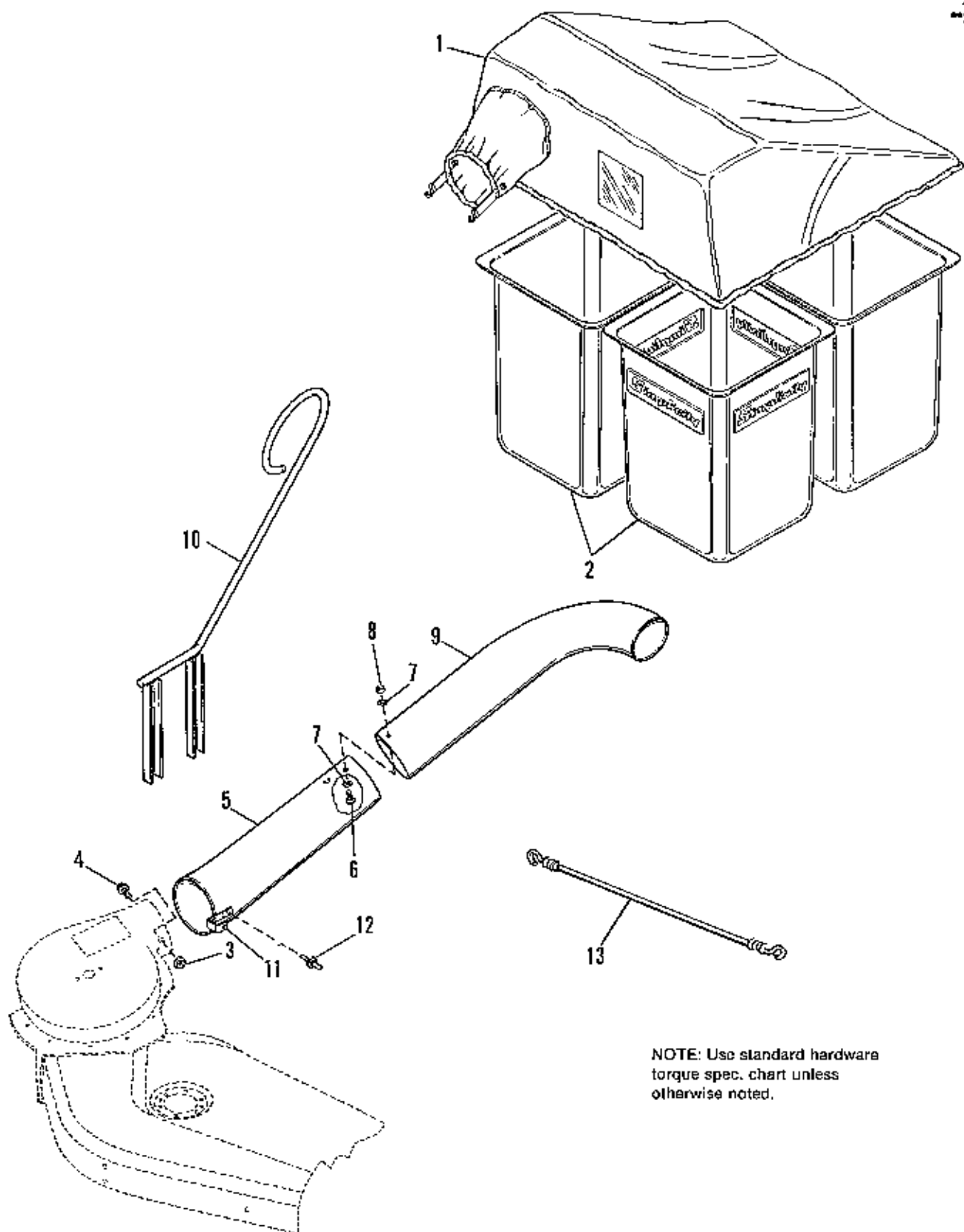
Ref. No.	Part No.	Qty.	Description
1	1708239	1	TAILGATE
2	1923114	2	CAPSCREW, 1/2-13 x 1
3	1921958	2	CAPSCREW, Hex, 1/4-20 x 1/2
4	1708238	1	BOX
5	1930644	2	LOCKNUT, Hex, Flange, 1/2-13
6	1703334	1	BRACKET, Pivot, L.H.
7	1921210	8	CAPSCREW, Hex
8	1703336	1	FRAME
9	1676892	2	WHEEL, Swivel
10	1924940	8	WASHER, 3/8
11	1917378	8	NUT, Hex, Lock, 3/8-16
12	102004	2	PIN, Clevis, 1/2x 1-1/2
13	176012	2	PIN, Safety
14	1916622	2	NUT, Hex, 1/4-20
15	1916964	2	LOCKWASHER, 1/4
16	1700768	1	HANDLE, Lift
17	1921977	1	CAPSCREW, 5/16-18 x 1-1/4
18	1919326	2	WASHER, 5/16
19	177649	2	WASHER, Spring, Special, 5/16
20	1700765	1	HANDLE, Latch
21	1917372	1	NUT, Hex, Full, 5/16-18
22	1920161	1	NUT, Hex, Jam, 5/16-18
23	1703335	1	BRACKET, Pivot, R.H.
24	1703370	1	DECAL, Max. Capacity



Quad Bagger Dump Cart - Hitch Group

Ref. No.	Part No.	Qty.	Description
1	1921176	1	CAPSCREW
2	960154	2	WASHER, Plain, 1/2
3	1705791	1	PIVOT, Plate, Hitch
4	1703211	1	SPACER
5	1705790	1	SUPPORT, Plate, Hitch
6	1705792	1	SPACER
7	176012	1	PIN, Safety
8	1930644	1	LOCKNUT, Hex, Flange, 1/2-13
9	1920415	2	CAPSCREW, 3/8-16 x 1-1/4
10	1924940	2	WASHER, Plain, 3/8
11	158227	2	SPACER
12	1930651	2	NUT, Hex, Lock, 3/8-16
13	1708067	1	BRACKET, "U" Hitch (Mfg. No. 1692031 Only)
14	1960379	2	NUT, Hex, Lock Esna, 1/2-13 (Mfg. No. 1692031 Only)
15	1920328	2	CAPSCREW, Hex, 1/2-13 x 1-1/2 (Mfg. No. 1692031 Only)

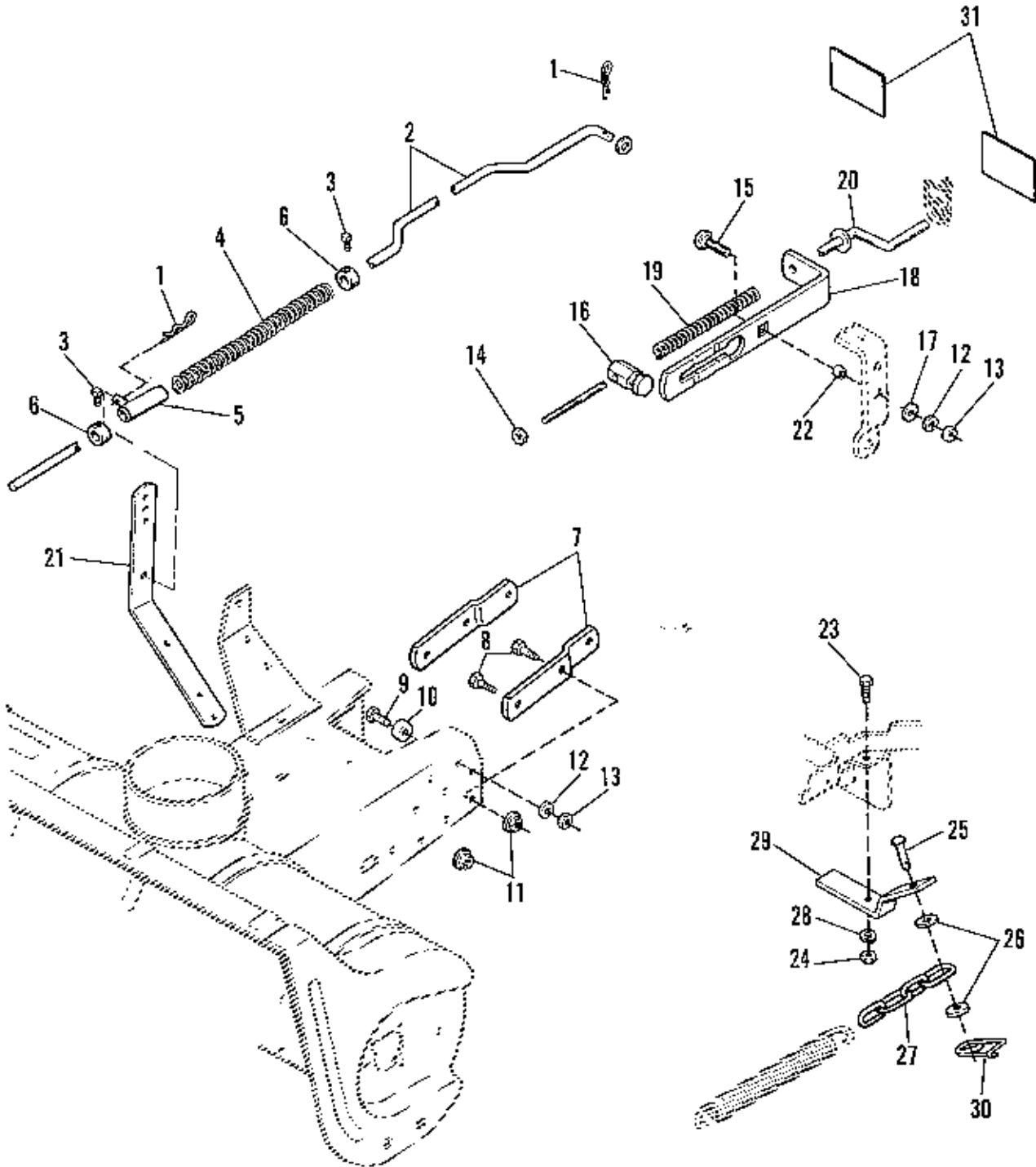
**2132
**2139



NOTE: Use standard hardware torque spec. chart unless otherwise noted.

Quad Bagger

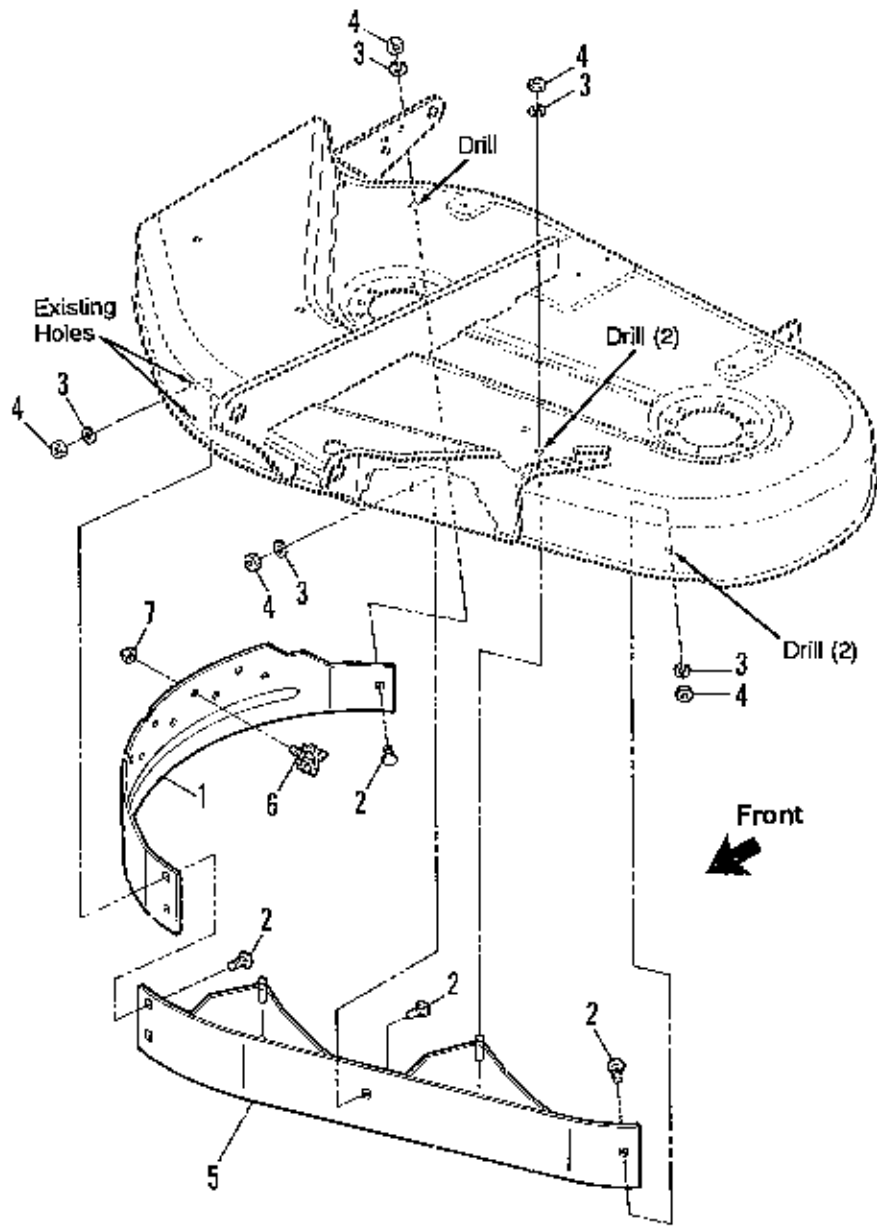
Ref. No.	Part No.	Qty.	Description
1	1705783	1	HOOD
2	1702186	4	BASKET, Grass Collector (Mfg. No. 1691870 Only)
	1703378	4	BASKET, Grass Collector (Mfg. No. 1692031 Only)
3	1930641	1	NUT, Hex, Flange, Lock, 1/4-20
4	1980252	1	CARRIAGE BOLT, 1/4-20 x 5/8
5	1705112	1	TUBE ASSY., Lower (Incl. Ref. Nos. 11 & 12)
6	1930531	2	SCREW, Truss Hd., #10-32 x 1/2
7	1910531	4	WASHER, Plain, #10
8	1928919	2	NUT, Hex, Washer Assy., #10-32
9	1705779	1	TUBE, Upper
10	1707691	1	SUPPORT, Tube
11	1705063	1	CLIP, Spring
12	1673320	2	RIVET, Pop
13	1705282	1	CORD



NOTE: Use standard hardware torque spec. chart unless otherwise noted.

40" Snowthrower Hitch - Bracket & Manual Lift Rod Group

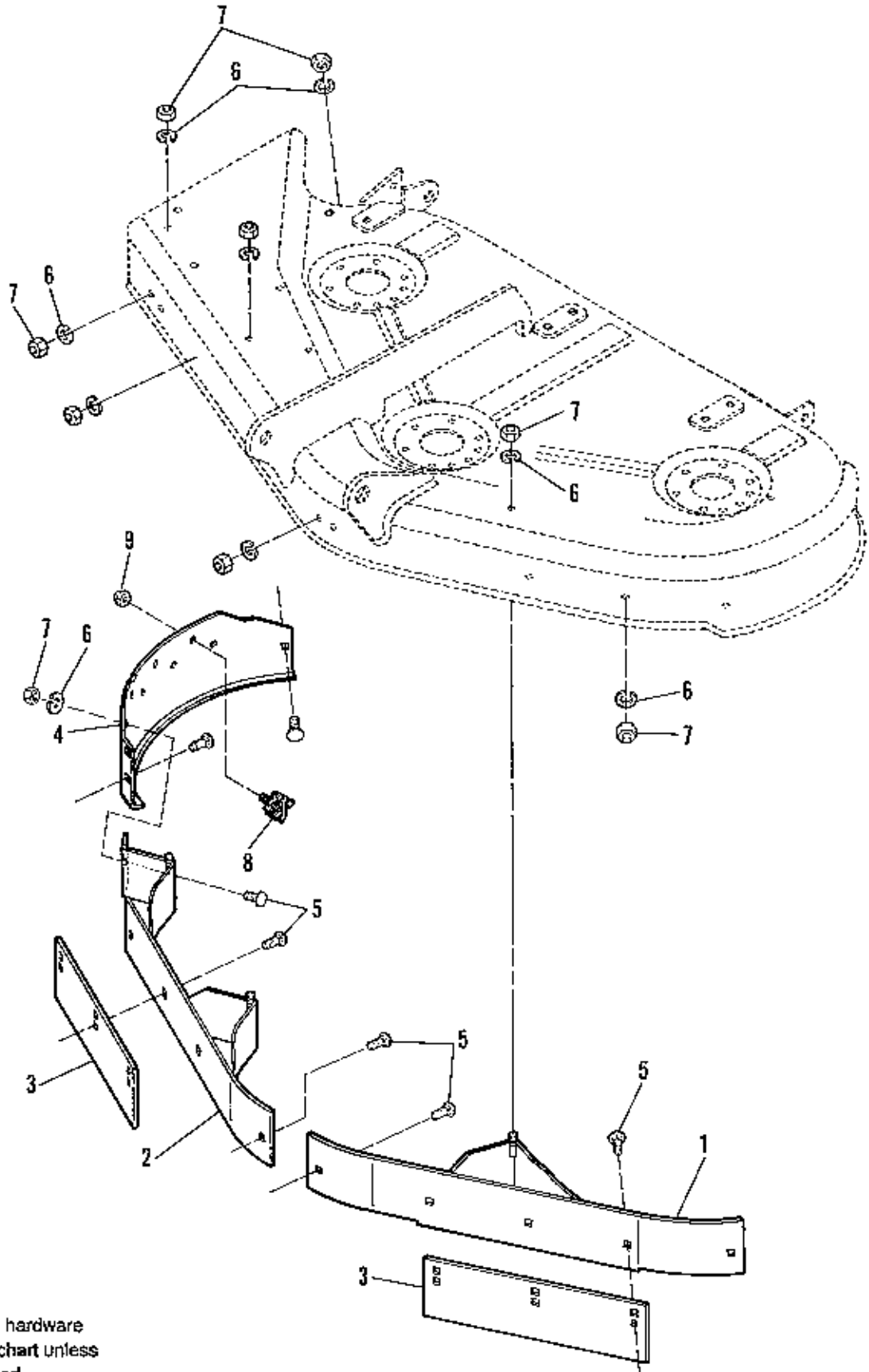
Ref. No.	Part No.	Qty.	Description
1	1960033	2	CLIP, Spring
2	1665887	1	ROD, Lift
3	1928721	2	SETSCREW, 5/16 x 1/2
4	171011	1	SPRING
5	171679	1	GUIDE ASSY., Rod
6	8031007	2	COLLAR, Set
7	177565	2	CLIP, Frame
8	1920676	4	CAPSCREW, Hex, 7/16 x 1
9	1920415	2	CAPSCREW, 3/8-16 x 1-1/4
10	174242	2	SPACER
11	1930650	4	LOCKNUT, Hex, Flange, 7/16-14
12	1916965	3	LOCKWASHER
13	1916950	3	NUT, Hex, Full, 3/8-16
14	1930651	1	LOCKNUT, Hex, Full, 3/8-16
15	1960268	1	CARRIAGE BOLT, 3/8-16 x 1-1/4
16	1704743	1	TRUNION
17	1924940	1	WASHER, Plain, 5/16
18	1705838	1	GUIDE, Spring
19	1668282	1	SPRING
20	1704741	1	ROD ASSY., Adjustment
21	1707522	1	ARM, Support
22	158227	1	SPACER
23	1921333	1	CAPSCREW, Hex, 5/16-18 x 1
24	1917372	1	NUT, Hex, Full, 5/16-18
25	1655651	1	PIN, Hitch
26	1919381	2	WASHER, Plain
27	1669241	1	CHAIN, 4-Link
28	1917356	1	LOCKWASHER, 5/16
29	1704757	1	BRACKET, Spring Anchor
30	176012	1	CLIP, Spring
31	1701600	2	REFLECTOR



Grass Mulcher & Leaf Shredder Kit - 38" Mower

Ref. No.	Part No.	Qty.	Description
1	1708006	1	BAFFLE, Discharge
2	1931333	5	CARRIAGE BOLT, 5/16-18 x 3/4
3	1917356	7	LOCKWASHER, 5/16
4	1917372	7	NUT, Hex, 5/16-18
5	1708064	1	BAFFLE, Mulching
*6	1707684	8	SHREDDERS, Leaf
*7	1919438	8	NUT, Hex, Plastite, 5/16-18

* Available as a replacement kit under part no. 1686609.
Contains qty. 8 each of Ref. No. 6 & 7.

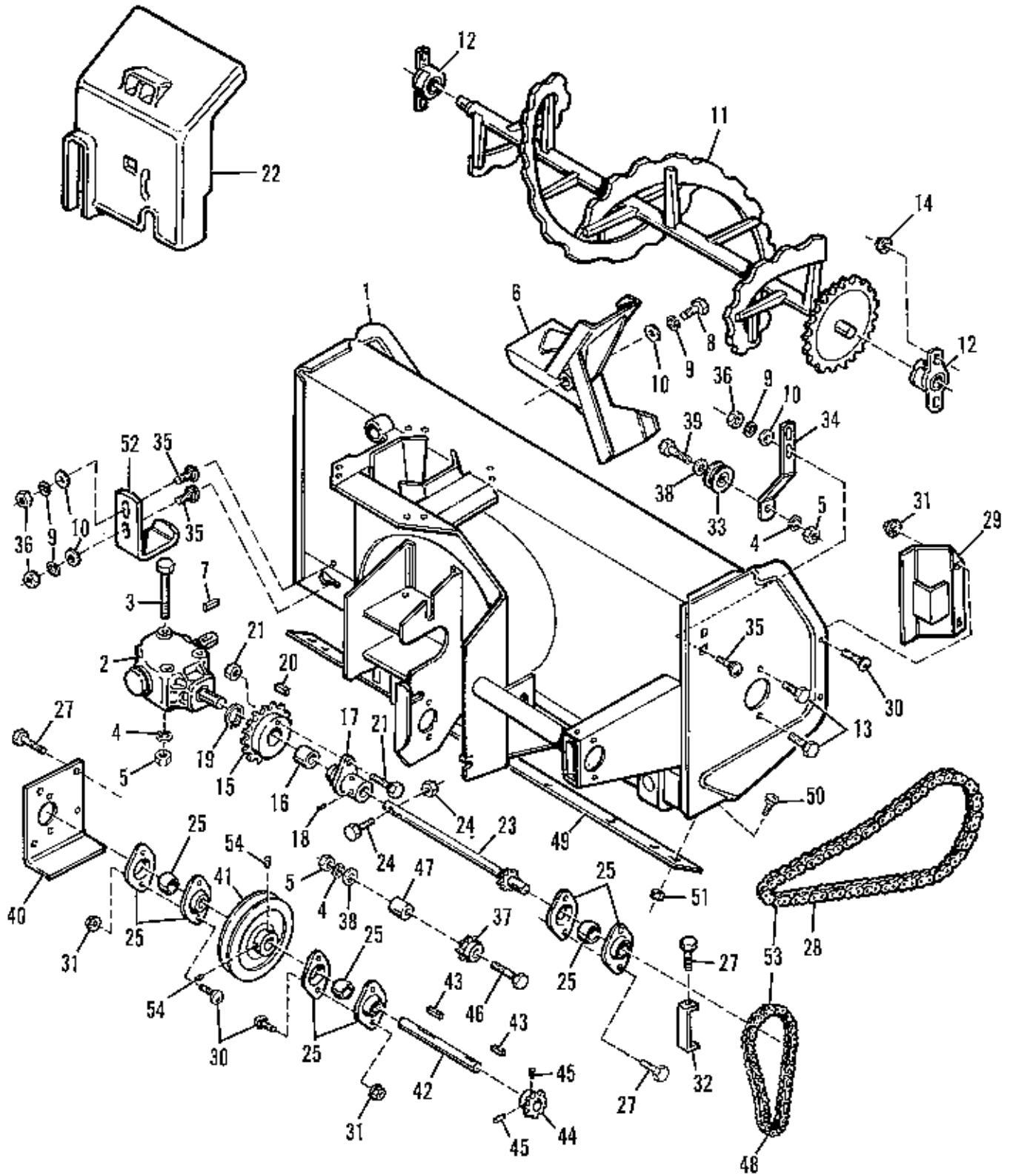


NOTE: Use standard hardware torque spec. chart unless otherwise noted.

Grass Mulcher & Leaf Shredder Kit - 44" Mower

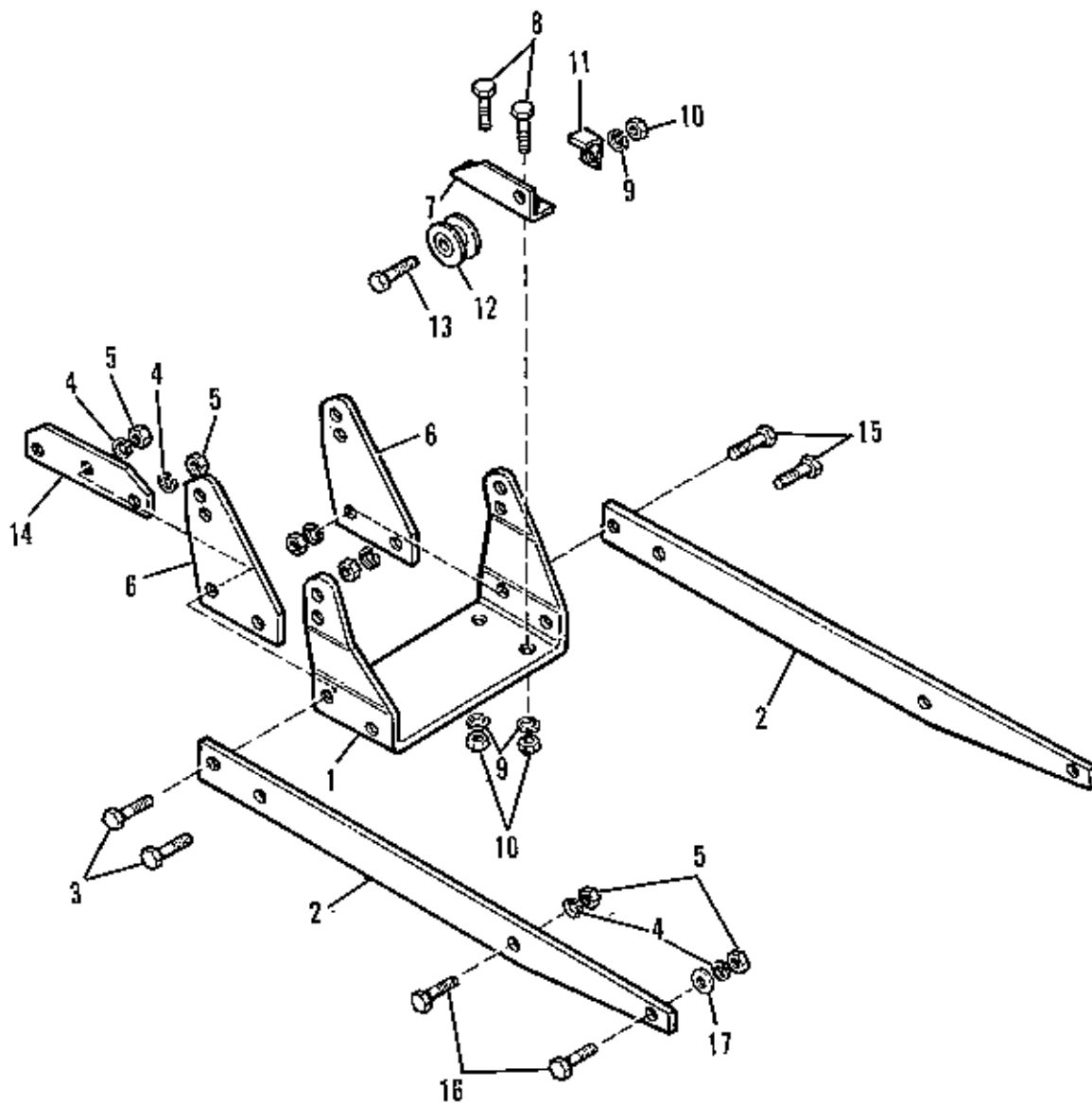
Ref. No.	Part No.	Qty.	Description
1	1708072	1	BAFFLE, Front, L.H.
2	1708069	1	BAFFLE, Front, R.H.
3	1708074	2	DEFLECTOR, Rubber
4	1708068	1	BAFFLE, Discharge
5	1931333	13	CARRIAGE BOLT, 5/16-18 x 3/4
6	1917356	15	LOCKWASHER, 5/16
7	1917372	15	NUT, Hex, 5/16-18
*8	1707684	6	LEAF SHREDDERS
*9	1919438	6	NUT, Hex, Plastite, 5/16-18

* Available as a replacement kit under part no. 1686609.
Contains qty. 6 each of Ref. No. 8 & 9.



40° Snowthrower - Frame, Drive & Auger Group

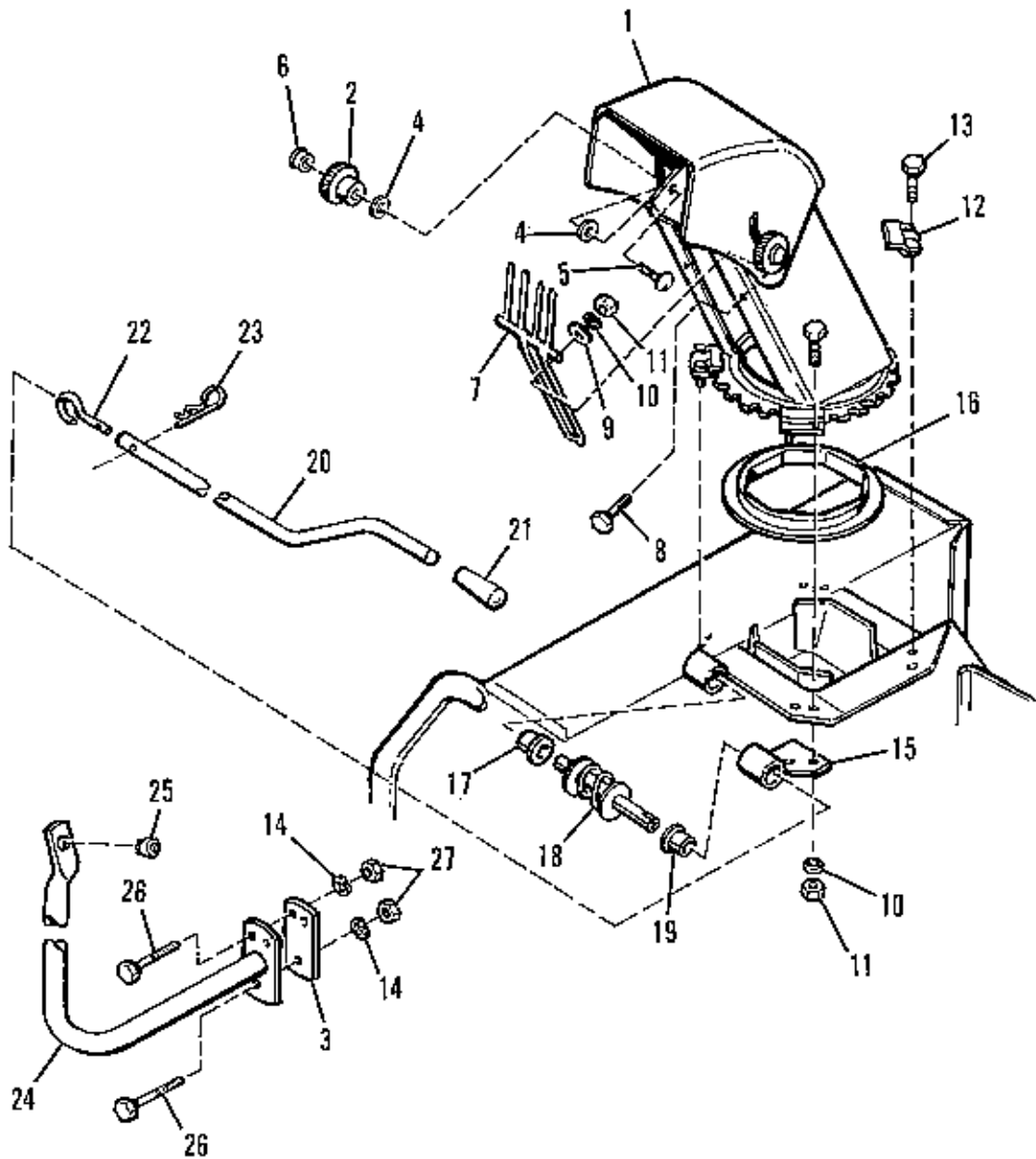
Ref. No.	Part No.	Qty.	Description
1	1713676	1	FRAME ASSY.
2	1713677	1	GEAR BOX
3	1922648	3	CAPSCREW, Hex Hd., 3/8-16 x 4, Gr. 5
4	1916965	5	LOCKWASHER, 3/8
5	1916950	5	NUT, Hex, 3/8
6	1713678	1	FAN ASSY.
7	1713679	1	KEY, 8mm x 7mm x 35mm
8	1960347	1	CAPSCREW, Hex Hd., M8-1-1/4 x 25mm
9	1917356	7	LOCKWASHER, 5/16
10	1924940	7	WASHER, Plain, 5/16
11	1713680	1	AUGER, 40°
12	1713681	2	BUSHING, Side Mount
13	1933260	4	SCREW, Lock, Flange Whiz, 3/8-16 x 3/4
14	1930645	4	NUT, Hex, Flange, 2-Way Lock, 3/8-16
15	1713682	1	SPROCKET
16	1713683	1	BUSHING
17	1713684	1	SHEAR PLATE
18	1928691	2	SETSCREW, Hex, Socket Cup Pt., 5/16-18 x 5/16
19	1713685	1	SNAP RING, External
20	1713686	1	KEY, 8mm x 35mm
21	1713687	1	SHEAR BOLT, Fan, w/Nylon Nut, 5mm x .8 x 40mm
22	1713688	1	COVER, Reduction, Plastic
23	1713689	1	SHAFT, Driven
24	1713690	1	SHEAR BOLT, Auger, w/Nylon Nut, 5mm x .8 x 45mm
25	1713691	3	BEARING
26	1713692	6	BEARING, Flange
27	1931648	6	SCREW, Lock, Flange Whiz, 5/16-18 x 1/2
28	1713693	1	CHAIN, #40 x 91 Links (without connecting link)
29	1713694	1	GUARD, Chain, Auger
30	1931332	6	CARRIAGE BOLT, 5/16-18 x 5/8
31	1935048	6	NUT, Hex, Flange, 2-Way Lock, 5/16-18
32	1713695	1	GUARD, Chain, Drive Shaft
33	1713696	1	PULLEY, Idler
34	1713697	1	ARM, Chain Adjuster
35	1931335	6	CARRIAGE BOLT, 5/16-18 x 1
36	1917372	6	NUT, Hex, 5/16-18
37	1713698	1	SPROCKET, Idler
38	1925125	2	WASHER, Plain, 7/16
39	1921971	1	CAPSCREW, Hex Hd., 3/8-16 x 1-3/4
40	1713699	1	PLATE, Support Bearing
41	1713700	1	PULLEY ASSY. (Incl. Ref. No. 54)
42	1713701	1	SHAFT, Driving
43	905850	2	KEY, 3/16 x 3/16 x 1
44	1713702	1	SPROCKET
45	1928804	2	SETSCREW, Hex, Socket, 1/4-20 x 5/16
46	1922130	1	CAPSCREW, Hex Hd., 3/8-16 x 2-3/4
47	1713703	1	SPACER, Idler
48	1713704	1	CHAIN, #40 x 40 Links (Incl. Ref. No. 53)
49	1713705	1	EDGE, Cutting
50	1960282	6	CARRIAGE BOLT, 5/16-18 x 3/4
51	1923362	6	NUT, Hex, Centerlock, 5/16-18
52	1713706	2	SKID SHOE
53	1704893	1	LINK, Connecting
53	1674333	2	SETSCREW, Pulley



40" Snowthrower - Hitch Support Group

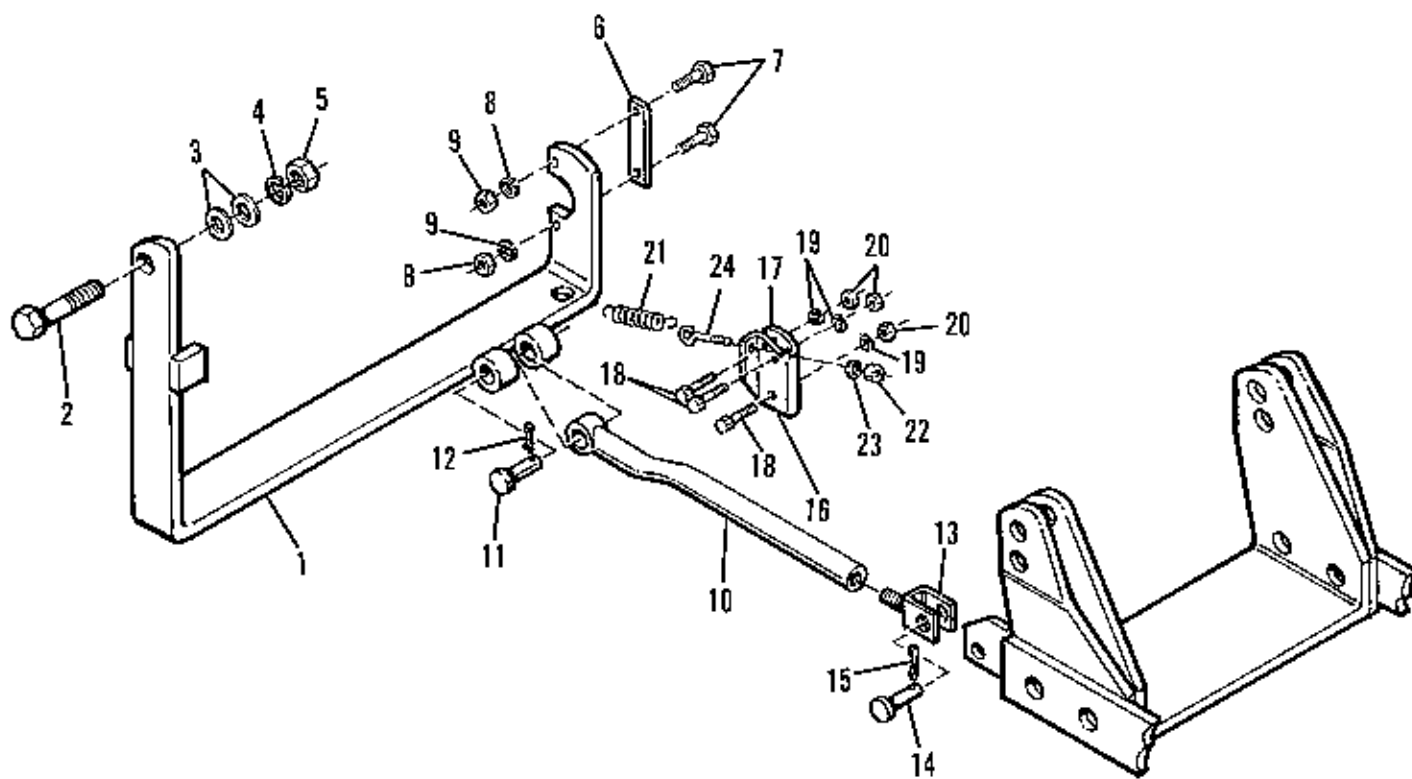
Ref. No.	Part No.	Qty.	Description
1	1713708	1	BRACKET, Pivot
2	1713709	2	FLATBAR, Attaching
3	1923027	2	CAPSCREW, Hex Hd., 7/16-14 x 1-3/4
4	1918199	8	LOCKWASHER, 7/16
5	1918213	8	NUT, Hex, 7/16-14
6	1713710	2	BRACKET, Support, Pivot
7	1713711	1	SUPPORT, Idler
8	1921210	2	CAPSCREW, Hex Hd., 3/8-16 X 1
9	1916965	3	LOCKWASHER, 3/8
10	1916950	3	NUT, Hex, 3/8-16
11	1713712	1	GUIDE, Belt
12	1713713	1	PULLEY, Idler
13	1921971	1	CAPSCREW, Hex Hd., 3/8-16 x 1-3/4
14	1713714	1	BRACKET, Lift Rod
15	1921212	2	CAPSCREW, Hex Hd., 7/16-14 x 1-1/2
16	1920677	4	CAPSCREW, Hex Hd., 7/16-18 x 1-1/4
17	1925125	2	WASHER, Plain, 7/16

NOTE: Components for Hitch, Part No. 1692041, are on pages 44 - 47.



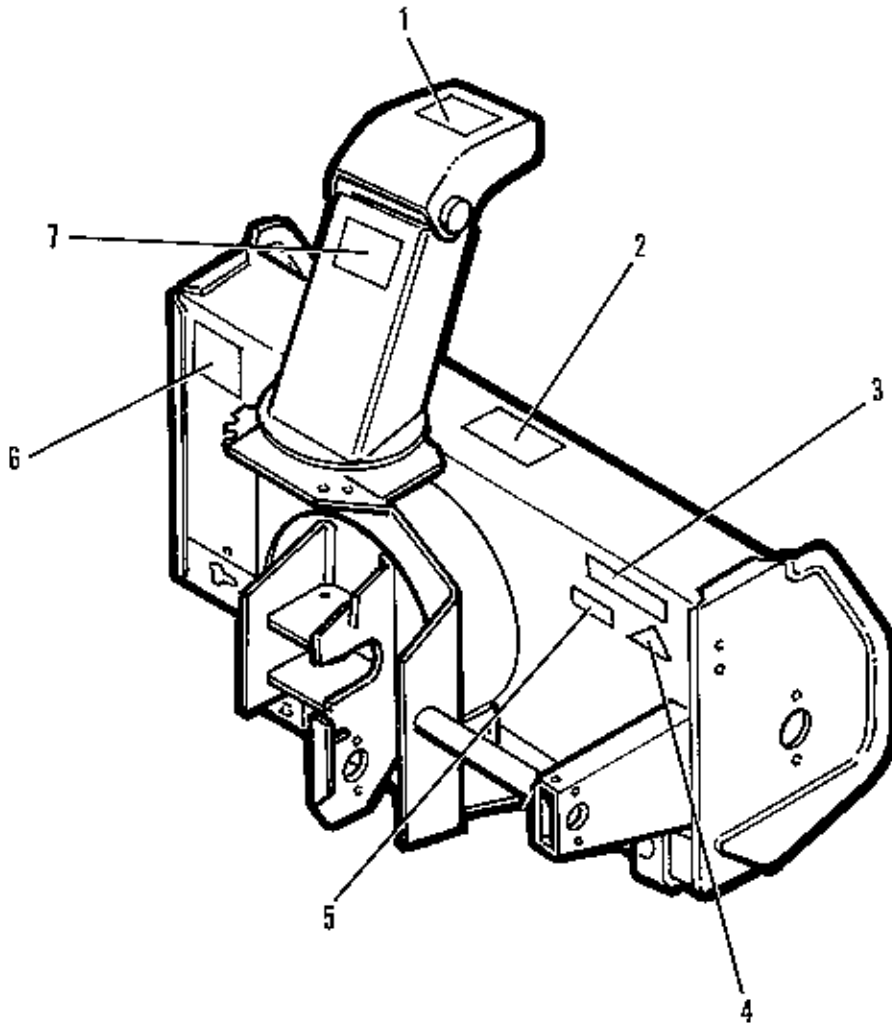
40" Snowthrower - Chute & Handcrank Group

Ref. No.	Part No.	Qty.	Description
1	1713715	1	CHUTE & DEFLECTOR ASSY.
2	1677181	2	KNOB
3	1713727	1	SUPPORT, Fixation
4	960175	4	WASHER, Nylon, 13/32 x 1 x 1/16
5	1931337	2	CARRIAGE BOLT, 5/16-18 x 1-1/2
6	1919438	2	NUT, Hex, Lock Esna, 5/16-18
7	1713716	1	HAND GUARD
8	1923341	4	CAPSCREW, Hex Hd., 1/4-20 x 3/4
9	1919326	2	WASHER, Plain, 5/16
10	1916964	10	LOCKWASHER, 1/4
11	1916622	10	NUT, Hex, 1/4-20
12	1713717	4	PLATE, Retaining
13	1921958	6	CAPSCREW, Hex Hd., 1/4-20 x 1/2
14	1916965	3	LOCKWASHER, 3/8
15	1713718	1	SUPPORT, Worm
16	1713719	1	RING, Nylon
17	1713720	1	BUSHING, Plastic, 1-5/16
18	1713721	1	WORM, Rotation, Clockwise
19	1713722	1	BUSHING, Plastic, 1-11/16
20	1713723	1	HANDLE
21	1710434	1	GRIP, Handle
22	1713724	1	HOOK, Handle
23	1918196	1	CLIP, Hairpin, 3/32 x 1-7/8
24	1713725	1	BRACKET, Support, Handle
25	1713726	1	GROMMET, Plastic
26	1920415	3	CAPSCREW, Hex Hd., 3/8-16 x 1-1/4
27	1916950	3	NUT, Hex, 3/8-16



40" Snowthrower - Lift Group

Ref. No.	Part No.	Qty.	Description
1	1713728	1	BRACKET, Lifting, Manual
2		1	CAPSCREW, Hex Hd., 1/2-13 x 1-3/4
3	1918431	2	WASHER, Plain, 1/2
4	1916966	1	LOCKWASHER, 1/2
5	1916951	1	NUT, Hex, 1/2-13
6	1713729	1	PLATE, Anchoring
7	1921960	2	CAPSCREW, Hex Hd., 1/4-20 x 1
8	1916964	2	LOCKWASHER, 1/4
9	1916622	2	NUT, Hex, 1/4-20
10	1713730	1	ROD, Push
11	1713731	1	PIN, Clevis
12	1918448	1	COTTER PIN, 3/32 x 1
13	1713732	1	FORK, Threaded
14	1713733	1	PIN, Clevis, 5/8 x 1-5/8
15	1960033	1	CLIP, Hairpin, 1/8 x 2-9/16
16	1713734	1	BRACKET, Fixation
17	1713735	1	PLATE, Retaining
18	1920415	3	CAPSCREW, Hex Hd., 3/8-16 x 1-1/4
19	1916965	3	LOCKWASHER, 3/8
20	1916950	3	NUT, Hex, 3/8-16
21	1713736	1	SPRING
22	1916964	1	LOCKWASHER, 1/4
23	1916622	1	NUT, Hex, 1/4-20
24	1713737	1	EYEBOLT, 1/4-20 x 4
25	1713738	1	ROD, Extension
26	1915726	1	NUT, Hex, 5/8-11






40" Snowthrower - Decal Group

Ref. No.	Part No.	Qty.	Description
1	1709685	1	DECAL, Danger (Blower Chute)
2	1709687	1	DECAL, Danger (Auger Blade)
3	1704774	1	DECAL, Caution (Rear Wheel Weights)
4		1	DECAL, OPEI (Not serviced)
5		1	SERIAL PLATE (Not serviced)
6	1713739	1	DECAL, Danger (Drive Belts)
7	1709686	1	DECAL, Danger (Operating Procedures)

NOTES

NOTES

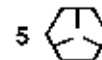
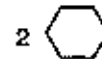
**TORQUE SPECIFICATIONS FOR
STANDARD MACHINE HARDWARE
TOLERANCE $\pm 20\%$**

SIZE	SAE GRADE #2 		SAE GRADE #5 		SAE GRADE #8 	
	<u>In./Lbs.</u> Ft./Lbs.	Nm.	<u>In./Lbs.</u> Ft./Lbs.	Nm.	<u>In./Lbs.</u> Ft./Lbs.	Nm.
8-32	19	2.1	30	3.4	41	4.6
8-36	20	2.3	31	3.5	43	4.9
10-24	27	3.1	43	4.9	60	6.8
10-32	31	3.5	49	5.5	68	7.7
1/4-20	66	7.6	8	10.9	12	16.3
1/4-28	76	8.6	10	13.6	14	19.
5/16-18	11	15.	17	23.1	25	34.
5/16-24	12	16.3	19	25.8	25	34.
3/8-16	20	27.2	30	40.8	45	61.2
3/8-24	23	31.3	35	47.6	50	68.
7/16-14	30	40.8	50	68.	70	95.2
7/16-20	35	47.6	55	74.8	80	108.8
1/2-13	50	68.	75	102.	110	149.6
1/2-20	55	74.8	90	122.4	120	163.2
9/16-12	65	88.4	110	149.6	150	204.
9/16-18	75	102.	120	163.2	170	231.2
5/8-11	90	122.4	150	204.	220	299.2
5/8-18	100	136.	180	244.8	240	326.4
3/4-10	160	217.6	260	353.6	386	525.
3/4-16	180	244.8	300	408.	420	571.2
7/8-9	140	190.4	400	544.	600	816.
7/8-14	155	210.8	440	598.4	660	897.6
1-8	220	299.2	580	788.8	900	1,224.
1-12	240	326.4	640	870.4	1,000	1,360.

NOTE:

1. These torque values are to be used for all hardware excluding: locknuts, self-tapping screws, thread forming screws, sheet metal screws and socket head setscrews.
2. Recommended seating torque values for locknuts:
 - a. For prevailing torque locknuts - use 65% of grade 5 torques.
 - b. For flange whizlock nuts (and screws) - use 135% of grade 5 torques.
3. Unless otherwise noted on assembly drawings all torque values must meet this specification.

**BOLT HEAD MARKING
S.A.E. GRADE:**



SIMPLICITY MANUFACTURING, INC.
500 N. Spring St., P.O. Box 997
Port Washington, WI USA 53074-0997

TP-1157-01
PRINTED IN U.S.A
2/94 - CCI