

Parts Manual for
SNAPPER®

**19" 120 VOLT ELECTRIC
WALK BEHIND MOWERS
SERIES 7**

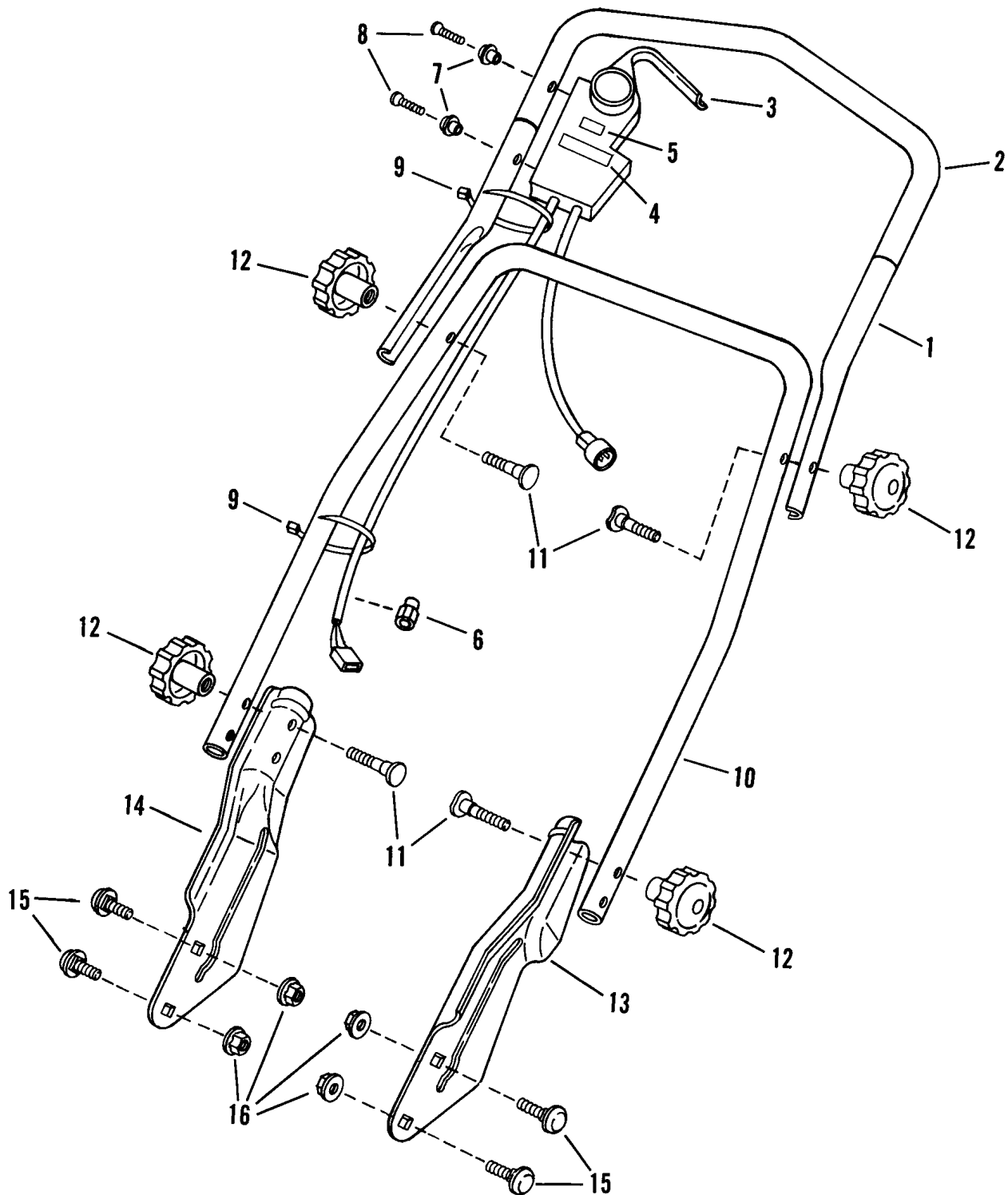


MODEL
19E07B LWE07B

SNAPPER® McDonough, GA, 30253 U.S.A.

PAGE	GROUP
4	Upper, Middle & Lower Handles
6	Deck, Wheels, & Motor
8	Grass Bag, Adapter & Decals

Upper, Middle & Lower Handles



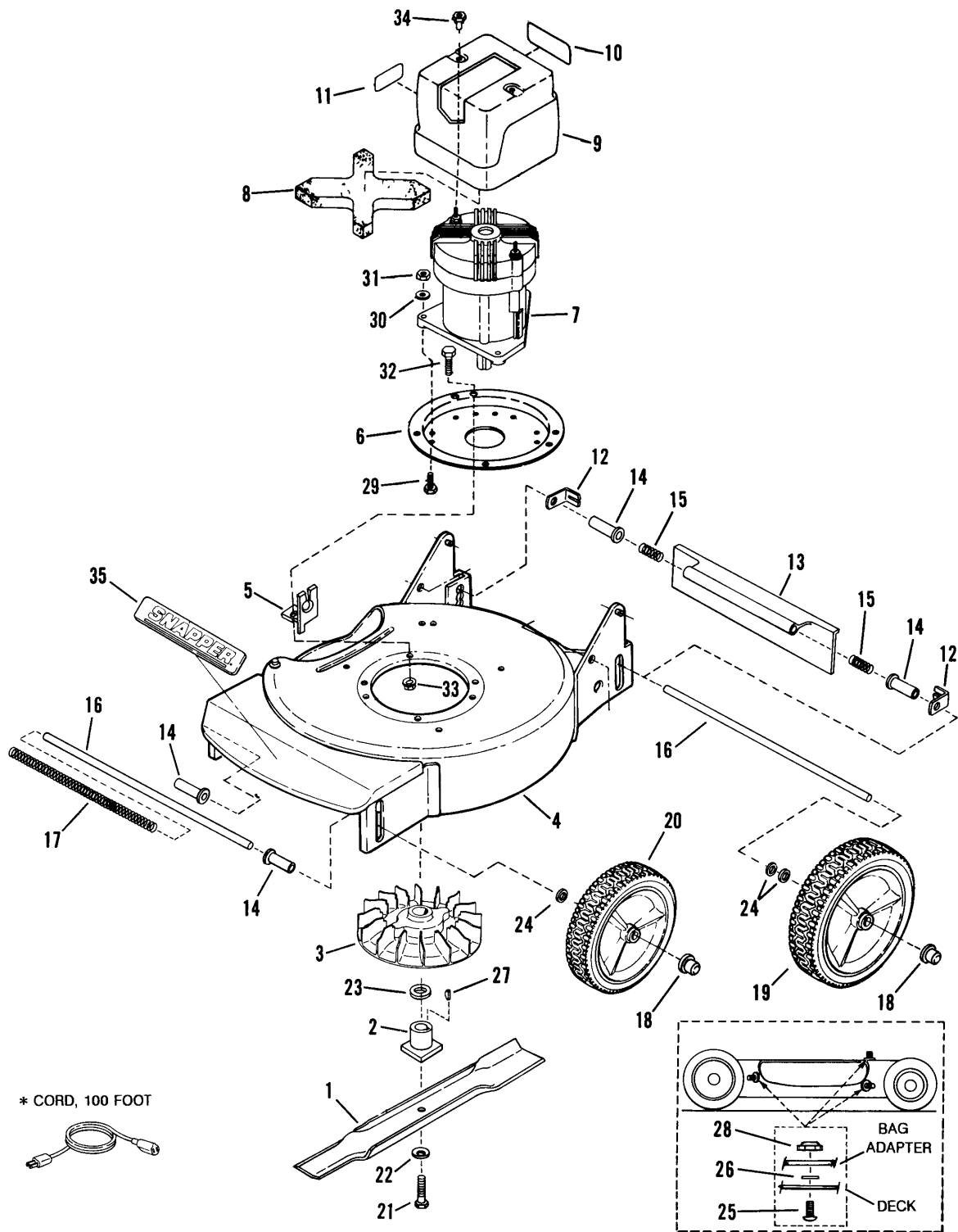
Upper, Middle & Lower Handles

Item	Part No	Qty	Description	Note
1	7051884		ASSEMBLY Upper Handle	<i>(Includes Item 2)</i>
2	7014903		TUBING, Heat Shrink	
3	--		CONTROL, Electric	<i>B&S #399192 (Includes items 5 thru 7)</i>
4	7014879		DECAL, Starting Procedure	
5	7014907		DECAL, Circuit Breaker Reset	
6	7014894		STRAIN-RELIEF, Harness	
7	7015114	2	INSULATOR, Handle	
8	7090894	2	SCREW, #10-24 x 1-3/8" Slotted Cap	
9	7012080	2	TIE, Cable	
10	7036350		HANDLE, Middle	
11	7091013	2	SCREW, 5/16-18 x 2" Curved Head	
12	7023735	2	KNOB, 5/16-18	
13	7046502		HANDLE, Lower L.H.	<i>Was 38467</i>
14	7035342		HANDLE, Lower R.H.	<i>Was 38466</i>
15	7090799	4	BOLT, 5/16-18 x 5/8" Short Neck Carriage	<i>Was 91026</i>
16	7091601	4	NUT, 5/16-18 Hex Flange Lock	<i>Was 90585</i>

Footnotes:

*NOTE: Purchase engine components directly from engine manufacturer dealer.

Deck, Wheels, & Motor



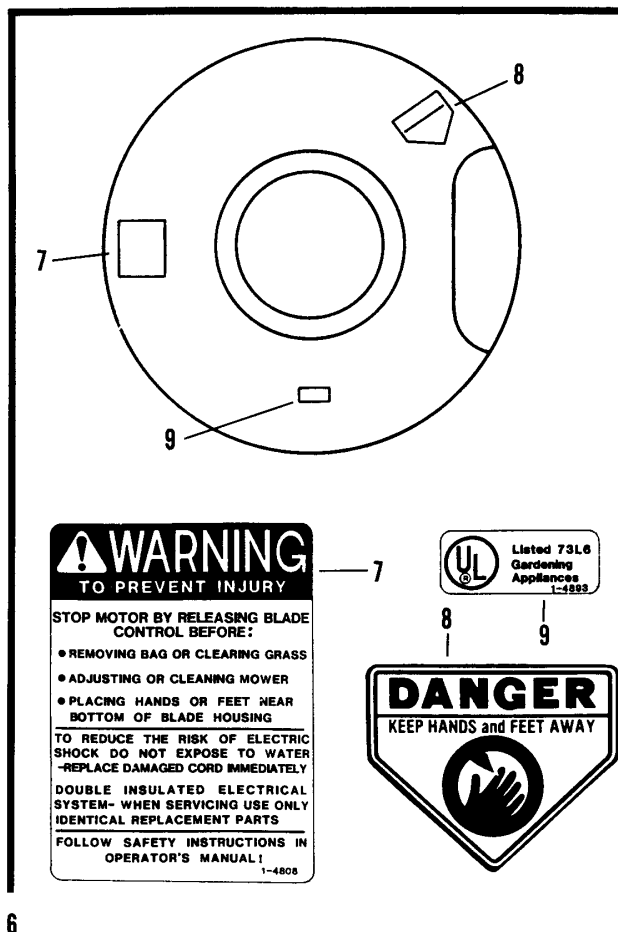
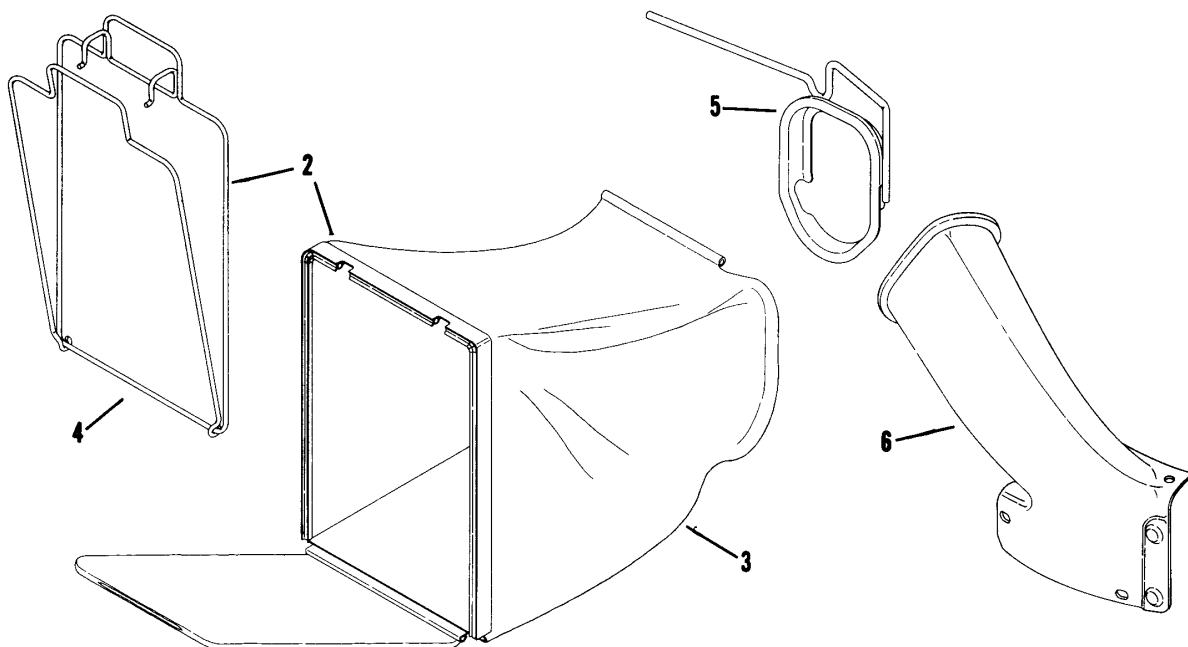
Deck, Wheels, & Motor

Item	Part No	Qty	Description	Note
1	7019712		BLADE, Cutting	
2	7014262		HUB, Blade	
3	7018960		FAN, Cooling	(Includes item 27)
4	7047974		DECK (Weldment)	
5	7032406		CLIP, Strain Relief	
6	--		PLATE, Adapter	*B&S #223184
7	--		MOTOR, Electric Model #748001-0326-01	*
8	--		FILTER	*B&S #271711
9	--		SHROUD, Motor	*B&S #280413 (Includes 10 & 11)
10	7014937		DECAL, Grass Bag Warning	
11	7014898		DECAL, Discharge Warning	
12	7032118	2	CLIP, Guard Retaining	
13	7018444		GUARD, Rear Foot	
14	7013320	4	BUSHING, Height Adjusting	
15	7013027	2	SPRING, Rear Axle	
16	7034357		AXLE, Front & Rear	Was 37946
17	7013307		Spring, Front Axle	
18	7013024	4	HUB-CAP 3/8 I.D.	
19	7022260	2	WHEEL, Rear 8 x 2.00	Was 19194
20	7019193	2	WHEEL, Front 7 x 1.75	
21	7090871		SCREW, 5/16-24 x 1-1/4" Hex Cap Gr. 5	
22	7014263		WASHER, Cone	
23	7014897		WASHER, 5/8 Spring	
24	7090122	2	WASHER, 3/8" Flat	
25	7090799	3	BOLT, 5/16-18 x 5/8" Short Neck Carriage	Was 91026
26	7011791	3	RETAINER, 5/16 Bolt	
27	7015903		KEY, Square	
28	7090951	3	NUT, 5/16-18 Hex Lock	
29	7090541	3	SCREW, 1/4-28 x 3/4" Hex Cap	
30	7090053	3	WASHER, 1/4 Internal Tooth	
31	7090095	3	NUT, 1/4-28 Hex	
32	7091021	3	SCREW, 5/16-24 x 3/4" Hex Cap	
33	7090480	3	NUT, 5/16-24 Hex Flange Lock	
34	14895	2	NUT, #10-24 Hex	
35	7044640		NAME PLATE, SNAPPER	Was 19279

Footnotes:

*NOTE: Purchase engine components directly from engine manufacturer dealer.
Available through Briggs & Stratton

Grass Bag, Adapter & Decals



Grass Bag, Adapter & Decals

Item	Part No	Qty	Description	Note
1	7059322		KIT, Grass Bag Catcher	<i>Was 60932 (Includes 2 thru 5)</i>
	7061918		KIT, Grass Bag Catcher	<i>Was 60934 (Includes 2 thru 6)</i>
2	7059322		ASSEMBLY, Grass Bag	<i>Was 51899 (Incl. items 2 thru 5)</i>
3	7017069		BAG, Door Type	
4	7051906		ASSEMBLY, Bag Wire	
5	7042489		CONNECTOR, Grass Bag	<i>Was 47969</i>
6	7053681		ADAPTER, Grass Bag	<i>Was 16088</i>
7	7014808		DECAL, Warning	
8	7015263		DECAL, CPSC Warning	
9	--		DECAL, UL Listing	<i>Was 14893, Not Available</i>

Footnotes:

Parts Manual for

SNAPPER®

19" 120 VOLT ELECTRIC WALK BEHIND MOWERS SERIES 7

IT IS THE POLICY OF SNAPPER TO IMPROVE ITS PRODUCTS
WHENEVER IT IS POSSIBLE AND PRACTICAL TO DO SO. WE
RESERVE THE RIGHT TO MAKE CHANGES OR ADD IMPROVEMENTS
AT ANY TIME WITHOUT INCURRING ANY OBLIGATION TO MAKE
SUCH CHANGES ON PRODUCTS MANUFACTURED PREVIOUSLY.

SNAPPER® McDonough, GA, 30253 U.S.A.