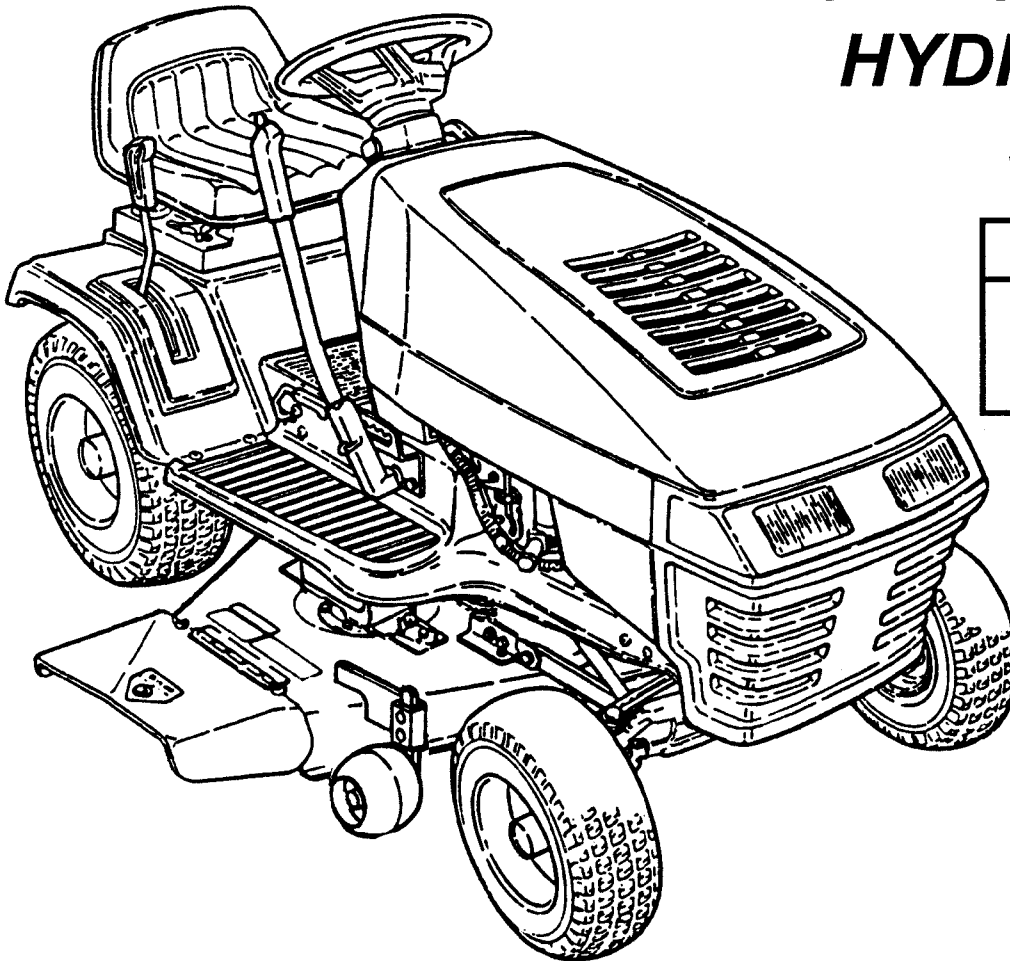


Parts Manual for

SNAPPER[®]

**LAWN TRACTORS
ELECTRIC CLUTCH
HYDRO DRIVE
SERIES D**



MODELS
LT160H42DBV
LT160H42DBV2
LT180H48DBV2

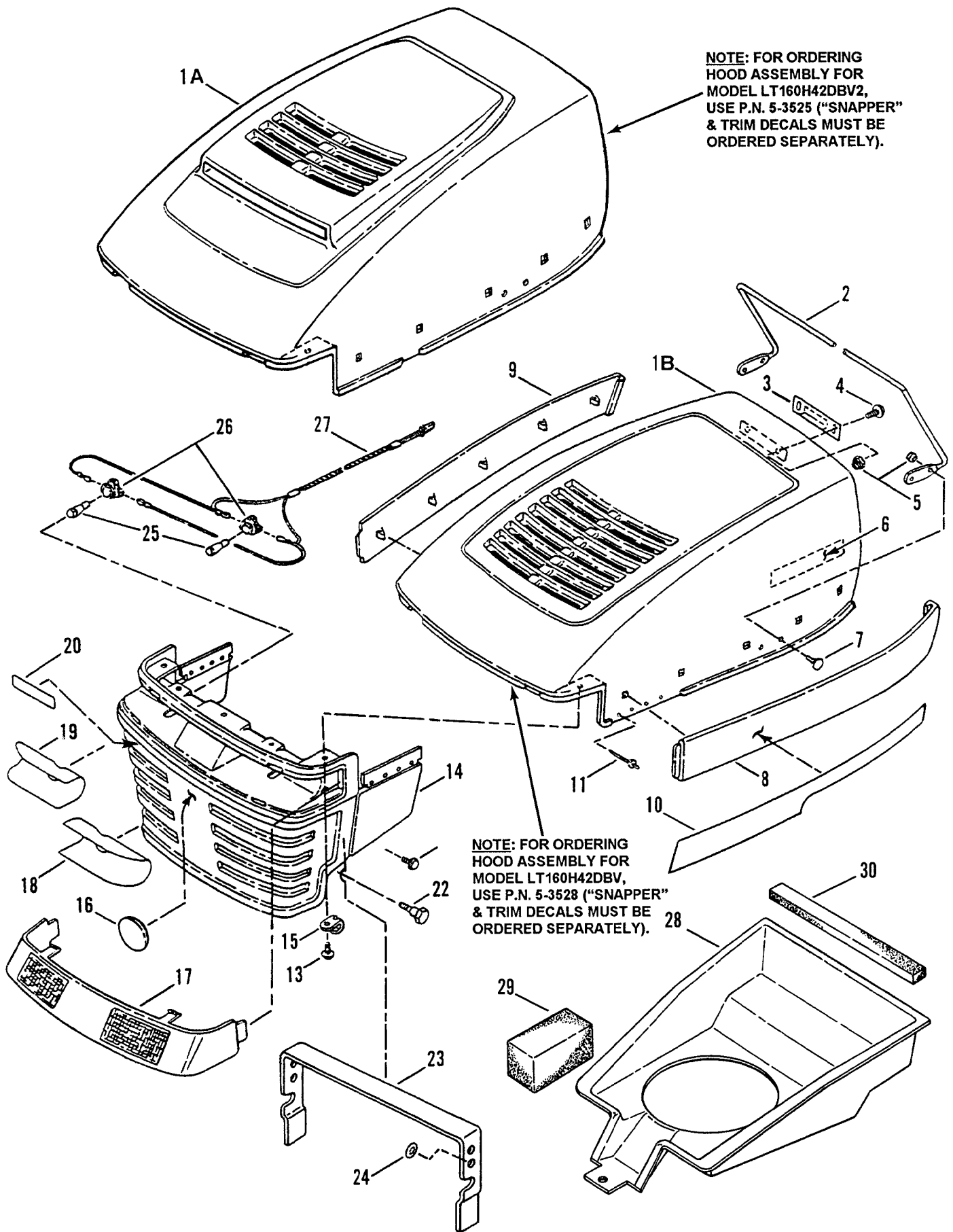
IT IS THE POLICY OF SNAPPER TO IMPROVE ITS PRODUCTS WHENEVER IT IS POSSIBLE AND PRACTICAL TO DO SO. WE RESERVE THE RIGHT TO MAKE CHANGES OR ADD IMPROVEMENTS AT ANY TIME WITHOUT INCURRING ANY OBLIGATION TO MAKE SUCH CHANGES ON PRODUCTS MANUFACTURED PREVIOUSLY.

SNAPPER[®] McDonough, GA., 30253 U.S.A.

CONTENTS

GROUP	PAGE
HOOD, BUMPER, HEADLIGHTS & COMPONENTS.....	4-5
STEERING WHEEL, CONSOLE, FUEL TANK.....	6-7
SEAT, REAR FENDER & COMPONENTS.....	8-9
CAST FRONT AXLE.....	10-11
WHEELS, FRONT & REAR.....	12-13
TRANSMISSION GROUP (HYDRO DRIVE)	14-15
FRAME, CLUTCH, BRAKE & STEERING COMPONENTS	16-17
BLADE ENGAGEMENT & TRANSMISSION CONTROLS.....	18-19
42" CUTTING DECK (Belt, Blade Brake Shown on Page 27)	20-21
48" CUTTING DECK SUB-ASSEMBLY (5-7821).....	22-23
48" CUTTING DECK, BELTS, BRAKES	24-25
SPINDLE ASSEMBLY - 42" CUTTING DECK.....	26
BELT, BLADE BRAKE - 42" CUTTING DECK.....	27
48" DECK, IDLER ASSEMBLIES	28-29
IMPLEMENT LIFT PARTS.....	30
SPINDLE ASSEMBLIES- 48" CUTTING DECK	31
ENGINE COMPONENTS (Model: LT160H42DBV).....	32-33
ENGINE COMPONENTS (Model: LT160H42DBV2).....	34-35
ENGINE COMPONENTS (Model: LT180H48DBV2).....	36-37
ELECTRICAL - (Model: LT160H42DBV).....	38
ELECTRICAL - (Models: LT160H42DBV2 & LT180H48DBV2).....	39
ELECTRICAL COMPONENTS	40
SAFETY DECALS.....	41

HOOD, BUMPER, HEADLIGHTS & COMPONENTS

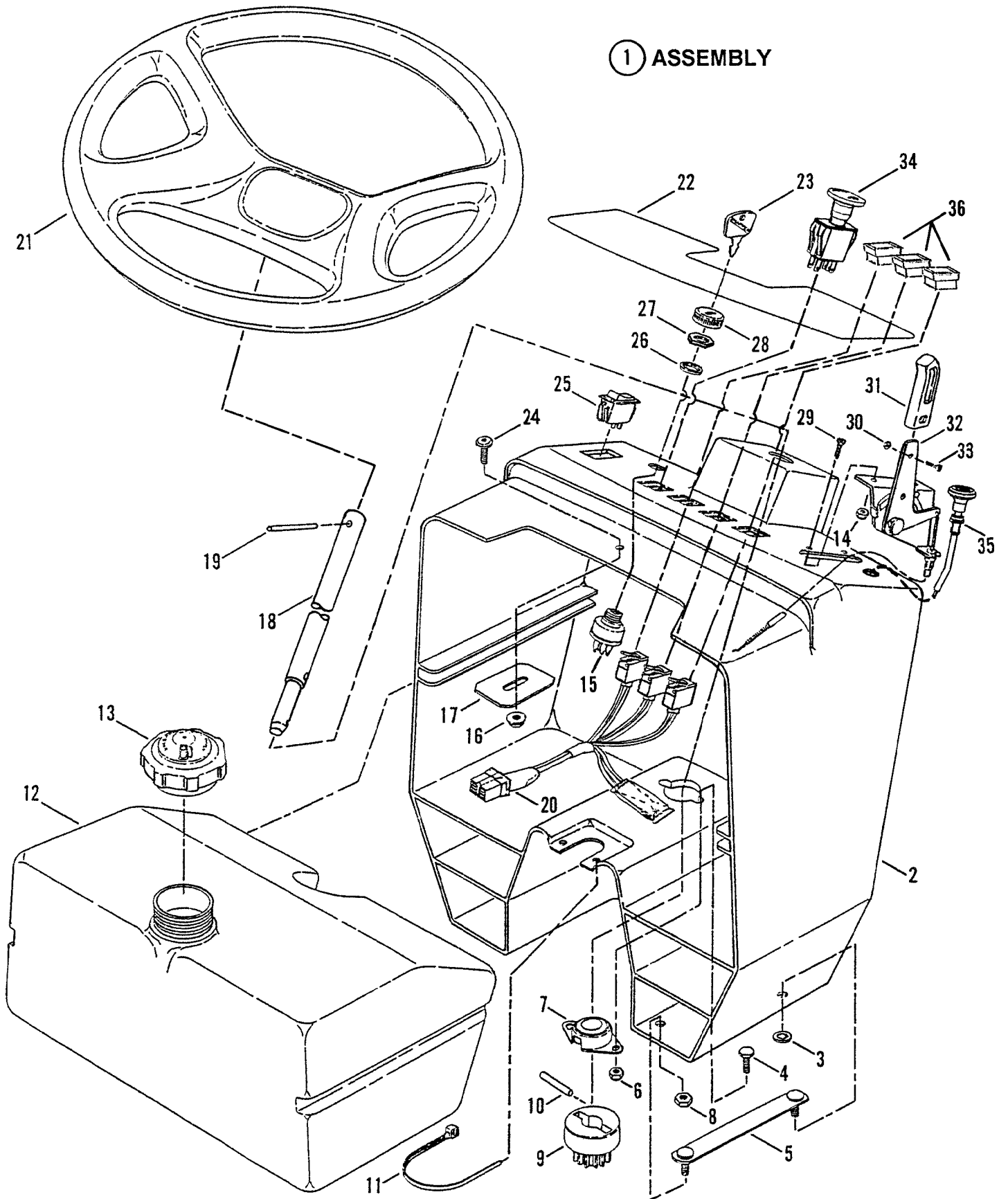


HOOD, BUMPER, HEADLIGHTS & COMPONENTS

ITEM	PART NO.	DESCRIPTION
1A	2-6406	HOOD, Mozart (with Scoop) (Models: LT160H42DBV2 & LT180H48DBV2)
1B	2-4471	HOOD, Mozart (Model: LT160H42DBV)
2	1-6766	ROD, Hood Support
3	2-4718	LATCH, Spring
4	9-0999	SCREW, 1/4-20 x 5/8" Truss Head, Torx (2)
5	7-6978	NUT, 1/4-20 Hex Nyloc (6)
6	1-6974	DECAL, SNAPPER, 8" Molded Logo (Silver Letters)
6A	3-6438	DECAL, SNAPPER, 8" Molded Logo (Silver Letters) (Model: LT180H48DBV2)
7	9-0803	BOLT, 1/4-20 x 5/8" Flat Head Carriage (4)
8	2-9572	PANEL, Hood (Left Hand)
9	2-9571	PANEL, Hood (Right Hand)
10	2-9020	DECAL, Hood (Right Hand) (Model:LT160H42DBV)
--	2-9019	DECAL, Hood (Left Hand) (Model: LT160H42DBV)
--	2-7820	DECAL, Hood (Right Hand) (Model: LT160H42DBV2)
--	2-7821	DECAL, Hood (Left Hand) (Model: LT160H42DBV2)
--	4-6756	DECAL, Hood (Right Hand) (Model: LT180H48DBV2)
--	4-6757	DECAL, Hood (Left Hand) (Model: LT180H48DBV2)
11	9-1095	RIVET, 1/8" Pop (8)
12	1-7175	DECAL, Clear Lens (Left Hand)
--	1-7174	DECAL, Clear Lens (Right Hand)
--	2-6180	DECAL, Clear Lens (Right Hand) (Model: LT180H48DBV2)
--	2-6179	DECAL, Clear Lens (Left Hand) (Model: LT180H48DBV2)
13	9-1106	SCREW, M4.8 x 1.59 x 16.00mm, Special (5)
14	2-9570	GRILLE, Hood
15	2-6482	CLIP, "J"
16	7-1544	DECAL, Molded Medallion
17	2-9602	LENS, Grille (Headlights)
18	2-6180	DECAL, Reflect (Left Hand)
19	2-6179	DECAL, Reflect (Right Hand)
20	2-2968	DECAL, SNAPPER, 4" Molded Logo (Silver Letters - Blue Stripe)
21	9-0858	SCREW, 5/16-18 x 1/2" Self-Tapping (4)
22	2-4061	BOLT, Shoulder, 3/8-16 x 1-1/4" Hex Socket, Torx (2)
23	3-4324	BRACE, Hood Support
24	1-1791	RETAINER, 5/16" Bolt
25	2-6172	BULB, Headlights (2)
26	2-4709	SOCKET, Headlight Bulb (2)
27	2-6171	HARNESS, Headlight Wiring
28	2-8764	PLENUM (Models: LT160H42DBV2 & LT180H48DBV2 Only!)
29	2-6844	FOAM, 2 x 2 x 3.5" (Models: LT160H42DBV2 & LT180H48DBV2 Only!)
30	2-6803	FOAM, 1/2 x 3/4 x 14.25" (Models: LT160H42DBV2 & LT180H48DBV2 Only!)

STEERING WHEEL, CONSOLE, FUEL TANK

① ASSEMBLY



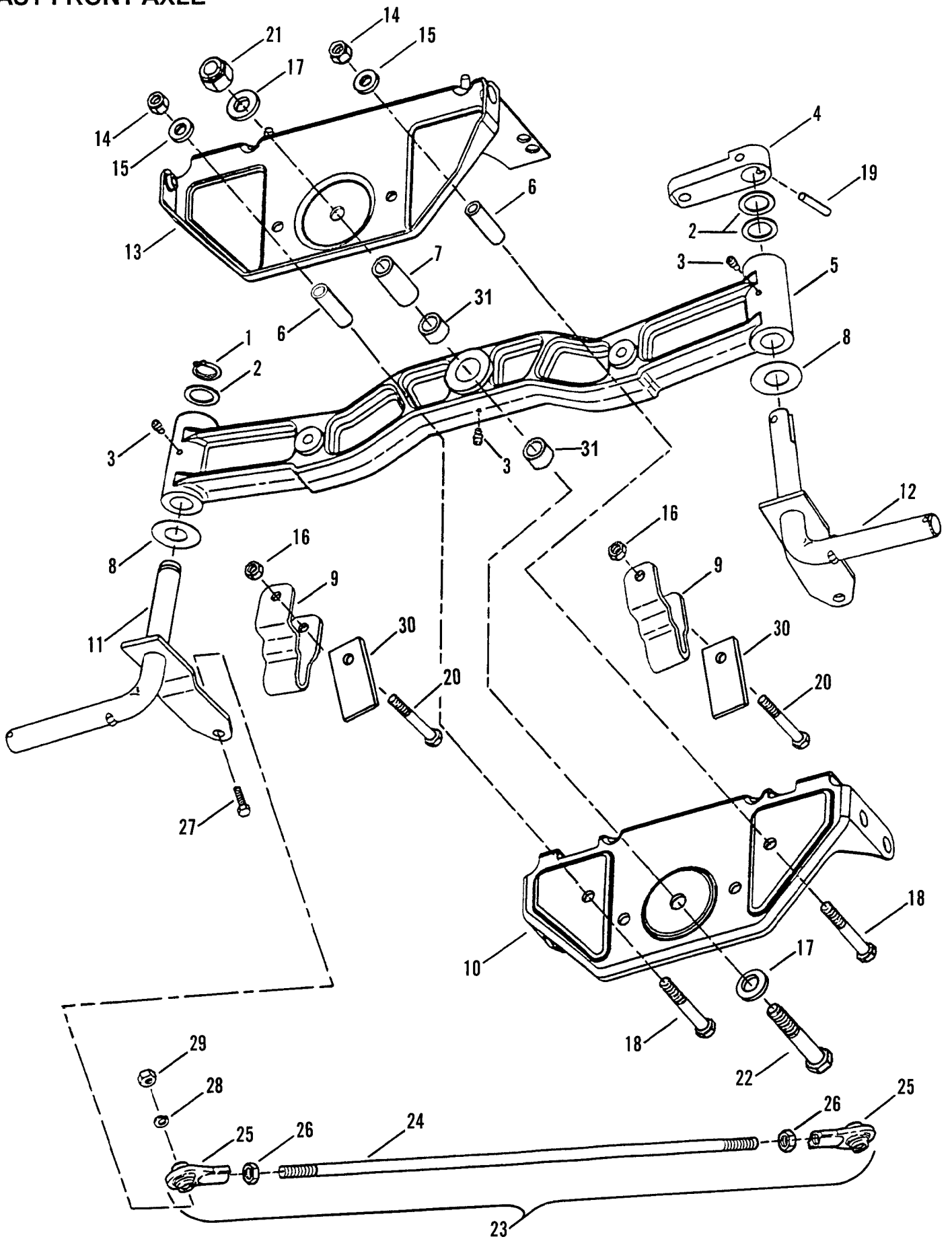
STEERING WHEEL, CONSOLE, FUEL TANK

ITEM	PART NO.	DESCRIPTION
1	5-2825	ASSEMBLY, Console (Includes items 2 thru 7)
--	5-3746	ASSEMBLY, Console (Model: LT180H48DBV2) (Includes 2A thru 7)
2	2-4376	CONSOLE
2A	2-8565	CONSOLE (Model: LT180H48DBV2)
3	1-1791	RETAINER, 5/16 Bolt (4)
4	9-1495	SCREW, 1/4-20 x 3/4" Hex Head Cap, Grade 5 (2)
5	5-2891	ASSEMBLY, Strap-Clinch Stud (2)
6	7-6978	NUT, 1/4-20 Hex Nyloc (2)
7	2-6196	ASSEMBLY, Flange Bearing
8	9-1575	NUT, 5/16-18 Hex Center Lock, Grade B or 5 (4)
9	2-2368	GEAR, Pinion, Steering Shaft
10	2-2369	PIN, Dowel, 1/4 x 1-1/4"
11	2-4641	TIE, Wire
12	5-2907	ASSEMBLY, Fuel Tank (Includes item 13)
13	1-4363	CAP, Fuel Tank
14	9-1599	NUT, #10-24 Hex Nyloc (2)
15	2-6343	KEY SWITCH (Includes item 27)
16	9-0951	NUT, 5/16-18 Hex Flange Lock
17	3-3883	BRACKET, Hood Latch Catch
18	2-2380	SHAFT, Steering
19	1-2765	ROLL-PIN, 1/4 x 2-1/4"
20	2-8679	LIGHTS, Indicator (Model: LT160H42DBV2 Only!)
21	2-9595	STEERING WHEEL
22	2-8562	DECAL, Console (Model: LT160H42DBV)
--	2-8563	DECAL, Console (Models: LT160H42DBV2 & LT180H48DBV2)
23	2-3504	KEY, Special (With Cover)
24	9-1001	SCREW, 5/16-18 x 5/8" Truss Head, Torx
25	2-3187	SWITCH, Lights
26	2-9714	SPACER
27	2-9721	NUT, 5/8-32 Hex
28	2-3506	BEZEL
29	9-1188	SCREW, #10-24 x 5/8" Machine (2)
30	9-1018	NUT, #8-32 Hex, Grade 2 or B
31	2-3655	HANDLE, Throttle Control
32	2-4642	CONTROL, Throttle (Model: LT160H42DBV)
--	2-8564	CONTROL, Throttle (Models: LT160H42DBV2 & LT180H48DBV2)
33	9-1017	SCREW, #8-32 x 3/8" Cross-Recessed, Fillester Head, Grade 2
34	2-8542	SWITCH, PTO
35	2-8566	CABLE, Choke (Models: LT160H42DBV2 & LT180H48DBV2 Only!)
36	2-5007	LENS, Indicator Light (Models: LT160H42DBV2 & LT180H48DBV2 Only!)

SEAT, REAR FENDER & COMPONENTS

ITEM	PART NO.	DESCRIPTION
1	5-3761	ASSEMBLY, Seat Support (Includes items 2, 3, 4, & 5) (Model: LT160H42DBV)
--	5-3745	ASSEMBLY, Seat Support (Includes items 2, 3, 4, 5, & 6) (Models: LT160H42DBV2 & LT180H48DBV2)
2	2-8579	SUPPORT, Seat
3	2-3354	SWITCH, Seat, Gray, N.C.
4	2-2759	SPRING (2)
5	2-8580	HOLDER, Cushion
6	1-5707	SWITCH, Seat, Black, N.O.
7	1-7875	KNOB, Seat Adjustment, 5/16-18 x 2" (2)
8	9-1001	SCREW, 5/16-18 x 5/8" Truss Head, Torx (4)
9	9-0362	SCREW, 1/4-20 x 5/8" Hex Washer Head, Self-Tapping (4)
10	3-3314	PAN, Seat (Fender)
--	3-4862	PAN, Seat (Fender) (Model: LT180H48DBV2)
11	2-3193	RIV-NUT, 5/16-18 (2)
--	9-1761	RIV-NUT, 5/16-18 Round (Model: LT180H48DBV2) (2)
12	2-2971	DECAL - SNAPPER, 7.28" Molded Logo, Silver Letters & Blue Stripe
13	2-6415	DECAL - CAUTION, Battery Location
14	3-4711	SUPPORT, Fender
15	9-1523	SCREW, 5/16/18 x 5/8" Hex Washer Head, Swage Form (Used on Left Side Only) (2)
16	9-1524	SCREW, 5/16-18 x 1-1/4" Hex Washer Head, Swage Form (Used on Right Side Only) (2)
17	9-1105	SCREW, #10-16 x 1/2" Hex Washer Head, Self-Tapping (4)
18	3-3120	DETENT, Shift
19	2-4894	COVER, Shift
20	1-6576	DECAL, Shift Cover, 5-Speed
21	9-1525	BOLT, 5/16-18 x 1/2" Hex Flange Lock, Grade 5 (3)
22	3-3318	BRACKET, Seat Support
23	3-3435	ROD, Seat Hinge
24	9-1503	PIN, 3/32 x 1-1/2" Hair
25	3-5579	SEAT, Operator, V560 (Models: LT160H42DBV2 & LT180H48DBV2) (Shown)
--	7-1564	SEAT, Operator (Model: LT160H42DBV) (Not Shown)
26	1-9109	CUSHION, Seat (2)
27	9-0913	SCREW, 10-24 x 1/2" (Torx)
28	2-8571	RECEPTACLE, Female Wire Harness Relay (Model: LT160H42DBV)
--	2-8520	RECEPTACLE, Female Wire Harness Relay (Models: LT160H42DBV2 & LT180H48DBV2)

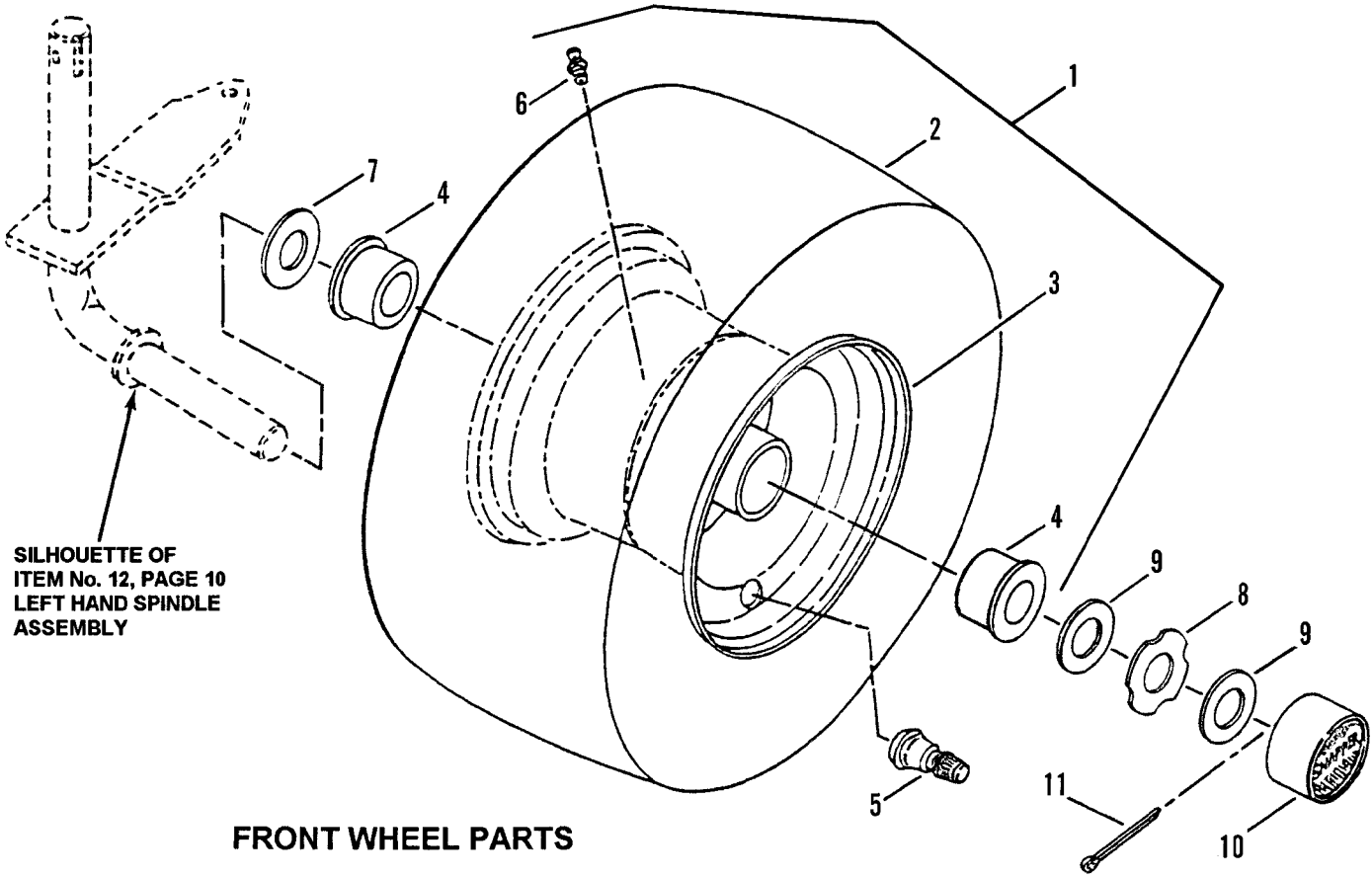
CAST FRONT AXLE



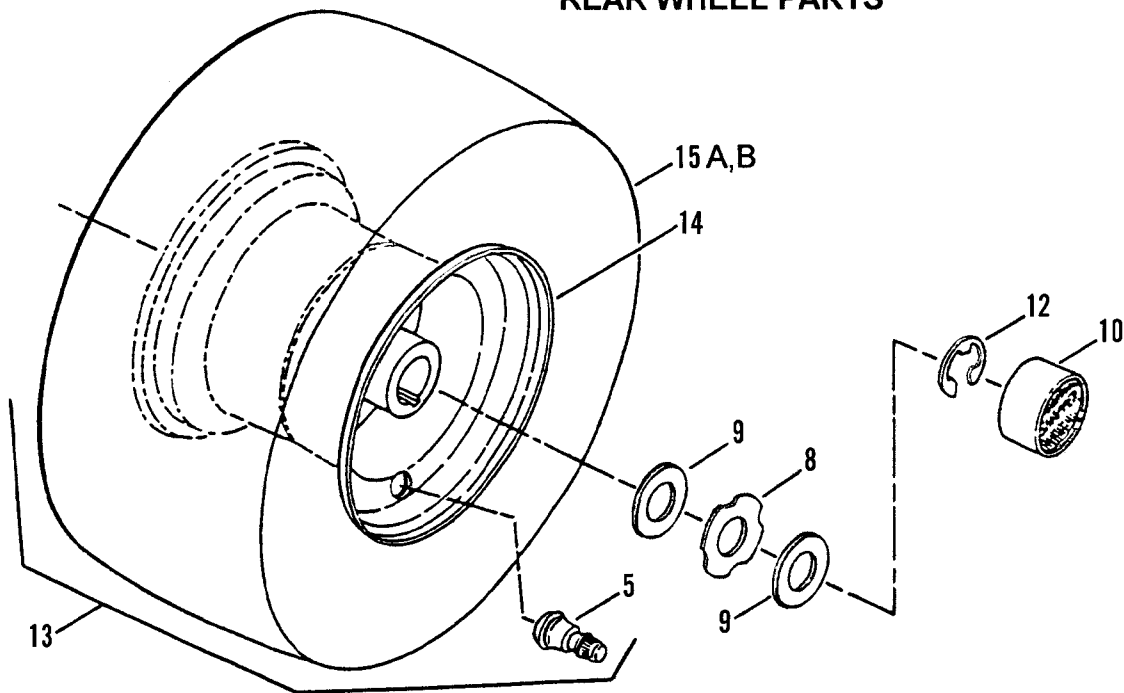
CAST FRONT AXLE

ITEM	PART NO.	DESCRIPTION
1	1-0746	RING, 5/8 External Retaining
2	1-0935	WASHER, 49/64 x 1-1/8 x 1/16" Flat
3	1-4669	FITTING, 3/16 Lube
4	1-9034	ARM, Steering
5	2-8647	AXLE, Cast
6	2-8666	SPACER, 25/64 x 1/2 x 1-13/16" (2)
7	2-8689	SPACER, Center
8	3-1036	WASHER, Thrust (2)
9	3-3383	BRACKET, Deck Hanger (2)
10	3-4740	BRACKET, Cast Axle (Rear)
11	4-1251	WELDMENT, Right Hand Spindle Wheel (Short)
12	4-1250	WELDMENT, Left Hand Spindle Wheel (Short)
13	5-3804	ASSEMBLY, Cast Axle Front Bracket
14	7-6979	NUT, 3/8-16 Hex Nyloc (2)
15	9-0122	WASHER, 3/8 x 5/64" Flat (2)
16	9-0184	NUT, 5/16-18 Hex Center Lock (2)
17	9-0250	WASHER, 1/2 x 3/32" Flat (2)
18	9-0795	SCREW, 3/8-16 x 2-3/4" Hex Head Cap, Grade 2 (2)
19	9-0842	PIN, 1/4 x 1-1/4" Roll
20	9-0831	SCREW, 5/16-18 x 2-3/4" Hex Head Cap, Grade 5 (2)
21	9-1121	NUT, 1/2-13 Hex Nyloc
22	9-1694	SCREW, 1/2-13 x 3" Hex Head Cap Grade 5
23	5-3873	ASSEMBLY, Tie Rod (Includes items 24, 25, & 26)
24	3-4777	ROD, Steering Connector
25	2-7936	ROD END (2)
26	9-0482	NUT, 3/8-24 Hex Jam (2)
27	9-1497	SCREW, 3/8-16 x 1-1/2" Hex Head Cap, Grade 5 (2)
28	9-1320	WASHER, 3/8 Split Lock (2)
29	9-1302	NUT, 3/8-16 Hex, Grade 5 (2)
30	3-5372	SPACER, Steering Stop
31	1-2706	BUSHING, Sleeve

WHEELS, FRONT & REAR



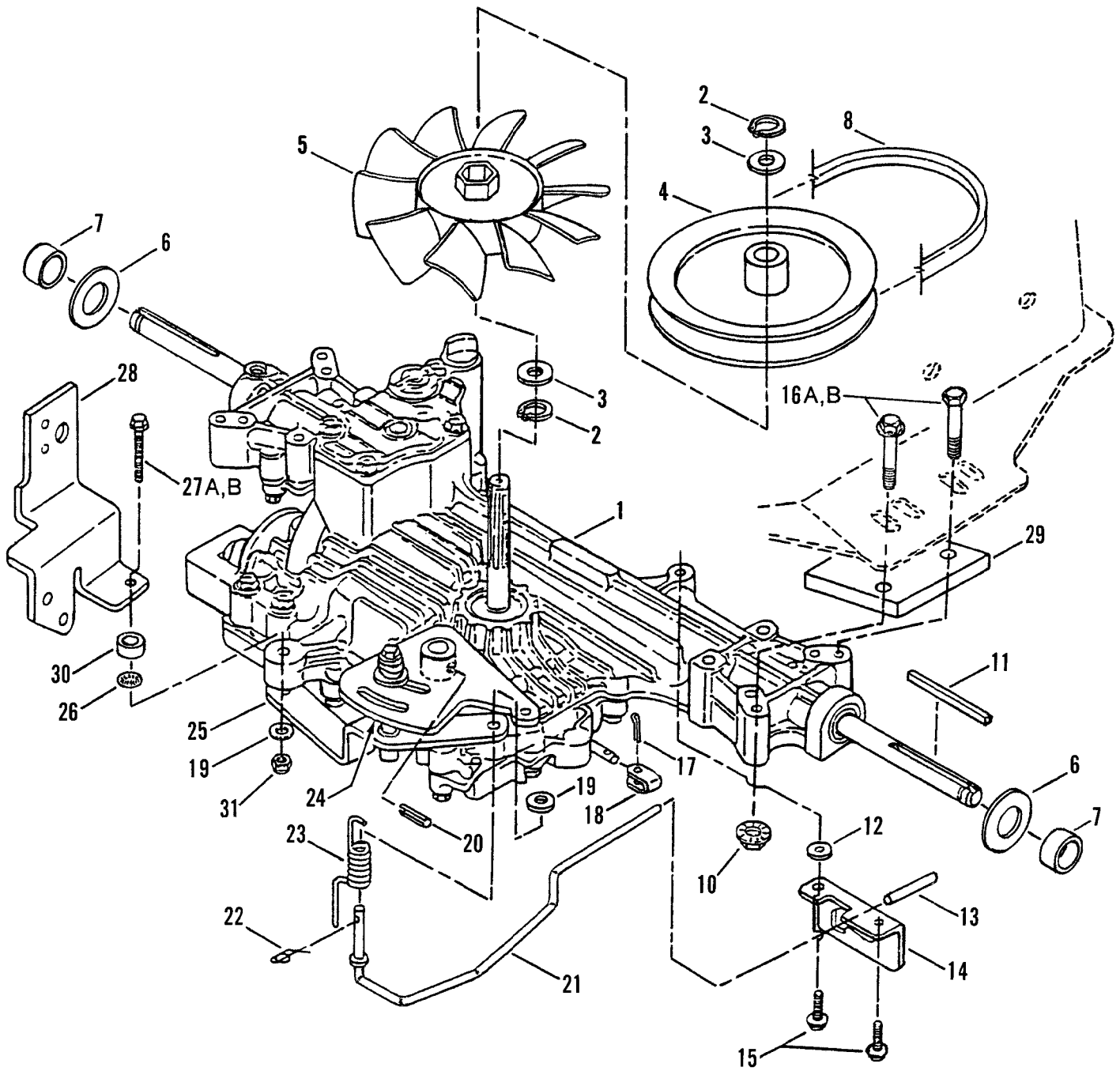
REAR WHEEL PARTS



WHEELS, FRONT & REAR

ITEM	PART NO.	DESCRIPTION
1	5-2957	ASSEMBLY, Front Tire & Rim (Includes items 2 thru 6) (Models: LT160H42DBV & LT160H42DBV2)
--	5-7991	ASSEMBLY, Front Tire & Rim (Includes items 2, 3A, 4A, 5 & 6) (Model: LT180H48DBV2)
2	2-6109	TIRE, 15 x 6.00
3	2-2772	RIM, 5-1/2 x 4.00
3A	7-1966	RIM, 6.00 x 4.00 Grey
4	1-4483	BEARING, Wheel (4)
4A	2-8722	BEARING, Wheel (Heim) (4)
5	1-2234	VALVE, Air (Snap-in) (4)
6	1-3876	FITTING, Lube (2)
7	3-4453	WASHER, Flat, 5/32 x 25/32" I.D. x 1-1/2" O.D. (2)
8	2-9618	WASHER, Hub-Cap Retaining (4)
9	2-9617	WASHER, Flat, 1/16 x 49/64 I.D. x 1-5/16" O.D.(8)
10	1-1022	HUB-CAP (4)
11	9-1516	COTTER-PIN, 5/32 x 1" (2)
12	2-9738	RING, External Retaining, 3/4" (2)
13	5-3563	ASSEMBLY, Rear Tire & Rim (Includes items 5, 14, & 15A) (Model: LT160H42DBV)
--	5-2958	ASSEMBLY, Rear Tire & Rim (Includes items 5, 14, & 15B) (Models: LT160H42DBV2 & LT180H48DBV2) 20x10-8
14	2-4454	RIM, 8 x 7.00 (Models: LT160H42DBV, LT160H42DBV2 & LT180H48DBV2)
15A	2-9589	TIRE, 18 x 9.50 (Model: LT160H42DBV)
15B	2-6111	TIRE, 20 x 10.00-8 (Models: LT160H42DBV2 & LT180H48DBV2)

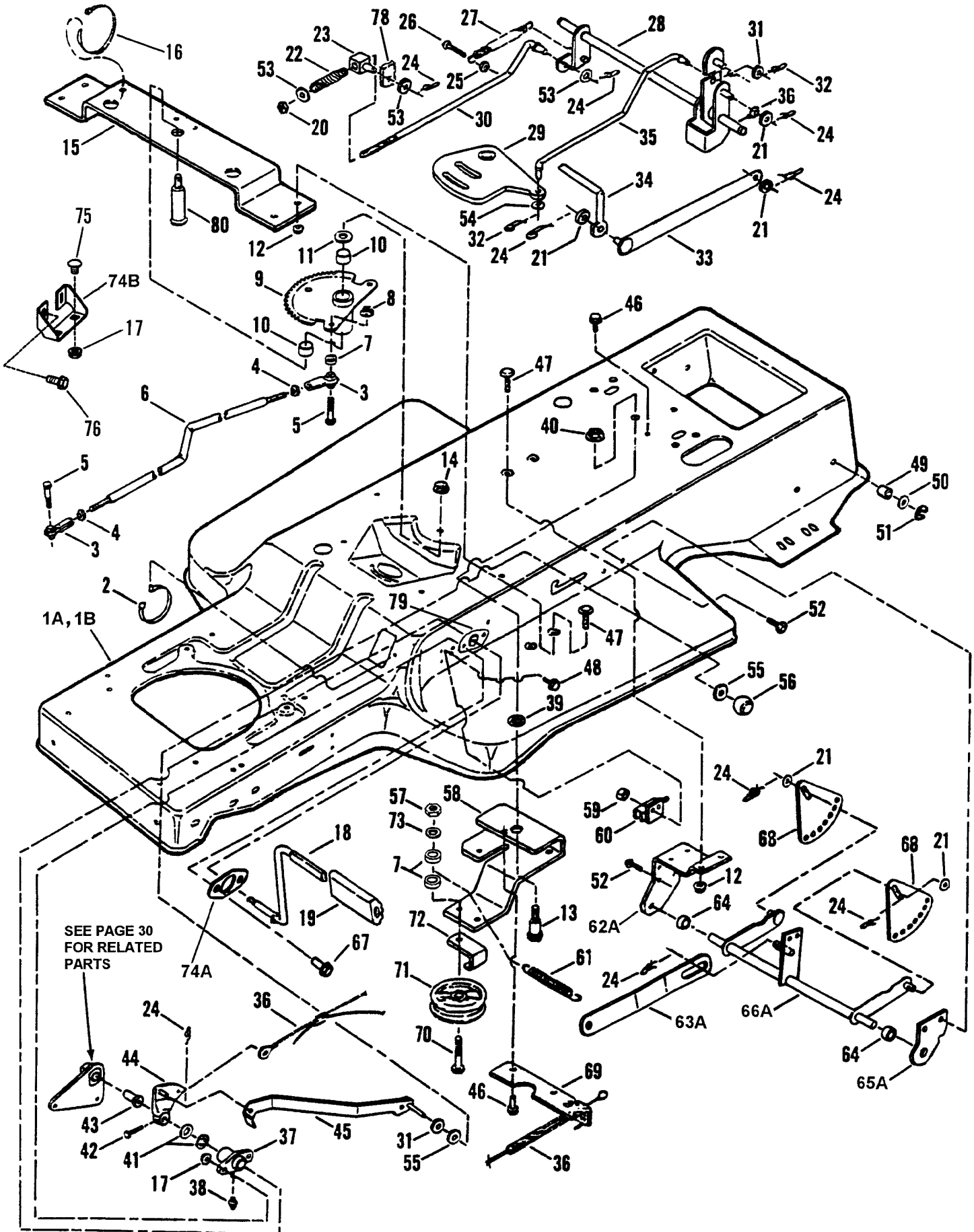
TRANSMISSION GROUP (Hydro Drive)



TRANSMISSION GROUP (Hydro Drive)

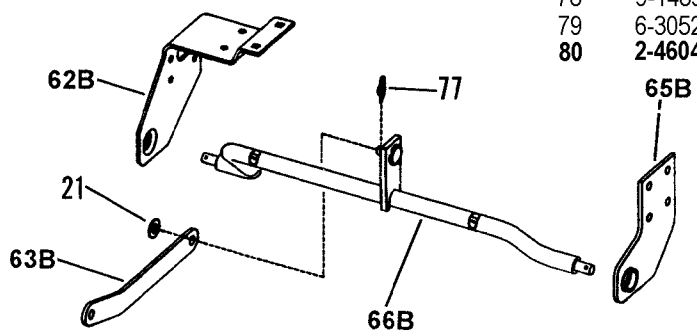
ITEM	PART NO.	DESCRIPTION
1	2-8083	TRANSAXLE, Hydro Drive, Tuff-Torq Model K50
--	2-8668	TRANSAXLE, Hydro Drive, Tuff-Torq Model K55 (Model: LT180H48DBV2)
2	2-8078	RING, External Retaining 13.8 mm (2)
3	2-8084	WASHER, Fan/Hub (2)
4	2-8077	PULLEY, Drive
5	2-8076	FAN
6	3-4453	WASHER, Flat, 1/8 x 25/32" I.D. x 1-1/2" O.D. (2)
7	2-8049	SPACER (2)
8	3-6584	BELT, Traction Drive
--	2-8585	BELT, HA96 TTK50/K55 Traction Drive- 20" (Model: LT180H48DBV2)
10	9-1601	NUT, 5/16-18 Hex Flange Lock Grade 5 (5)
11	1-7173	KEY, Square, 3/16 x 3/16 x 2-1/2" (2)
12	3-2070	WASHER, Flat, 3/4" O.D.
13	3-4137	GRIP, Roll Release
14	3-4139	DETENT, Roll Release
15	9-1284	SCREW, 3/8-16 x 1-3/4" Self-Tapping (2)
16A	9-0702	BOLT, 5/16-18 x 2-1/4" Hex. Flange. Lock, Gr. 2 (Model: LT160H42DBV Only!) (4)
16B	9-0831	SCREW, 5/16-18 x 2-3/4, Gr. 5 (Models: LT160H42DBV2 & LT180H48DBV2 Only!) (4)
17	9-1516	COTTER-PIN, 5/32 x 1"
18	3-4154	LINK, Roll Release
19	9-1296	WASHER, 11/32 x 11/16 x 1/16"
20	3-4146	ROLL-PIN, 6 mm x 32 mm
21	3-4140	WIRE FORM, Roll Release
22	3-4162	COTTER-PIN, 5/16 Self-Locking
23	3-4155	SPRING, Torsion (Roll Release)
24	5-3386	ASSEMBLY, Speed Control/Friction (Includes Part Numbers Listed Below)
	4-1612	WELDMENT, Speed Control Arm
	4-1709	WELDMENT, Speed Control Arm (Model: LT180H48DBV2 Only!)
	2-8036	SPRING
	3-4192	STUD, Friction
	9-0593	NUT, 3/8-16 Hex Flange Top Lock
	9-1331	WASHER, 1/8 x 13/32 I.D. x 1-1/2" O.D. (2)
	3-4267	WASHER, Friction Pad (2)
25	5-3380	SUPPORT, Friction Stud Assembly (Includes Part Numbers Listed Below)
	1-2306	BUSHING, Flange
	3-4178	SUPPORT, Friction Stud
26	1-1791	RETAINER, 5/16 Bolt
27A	9-1592	BOLT, 5/16-18 x 2" Hx. Fig. Lk., Grade 5 (Model: LT160H42DBV Only!)
27B	9-0702	BOLT, 5/16-18 x 2-1/4" Hex. Flange. Lock, Grade 2 (Models: LT160H42DBV2 & LT180H48DBV2 Only!)
28	3-4400	BRACKET, Spool
29	2-9951	SPACER, Axle (Models: LT160H42DBV2 & LT180H48DBV2 Only!) (2)
30	2-1740	SPACER, Torque, 3/8" Thick (Models: LT160H42DBV2 & LT180H48DBV2 Only!)
31	9-1298	NUT, 5/16-18 Hex Lock

FRAME, CLUTCH, BRAKE & STEERING COMPONENTS



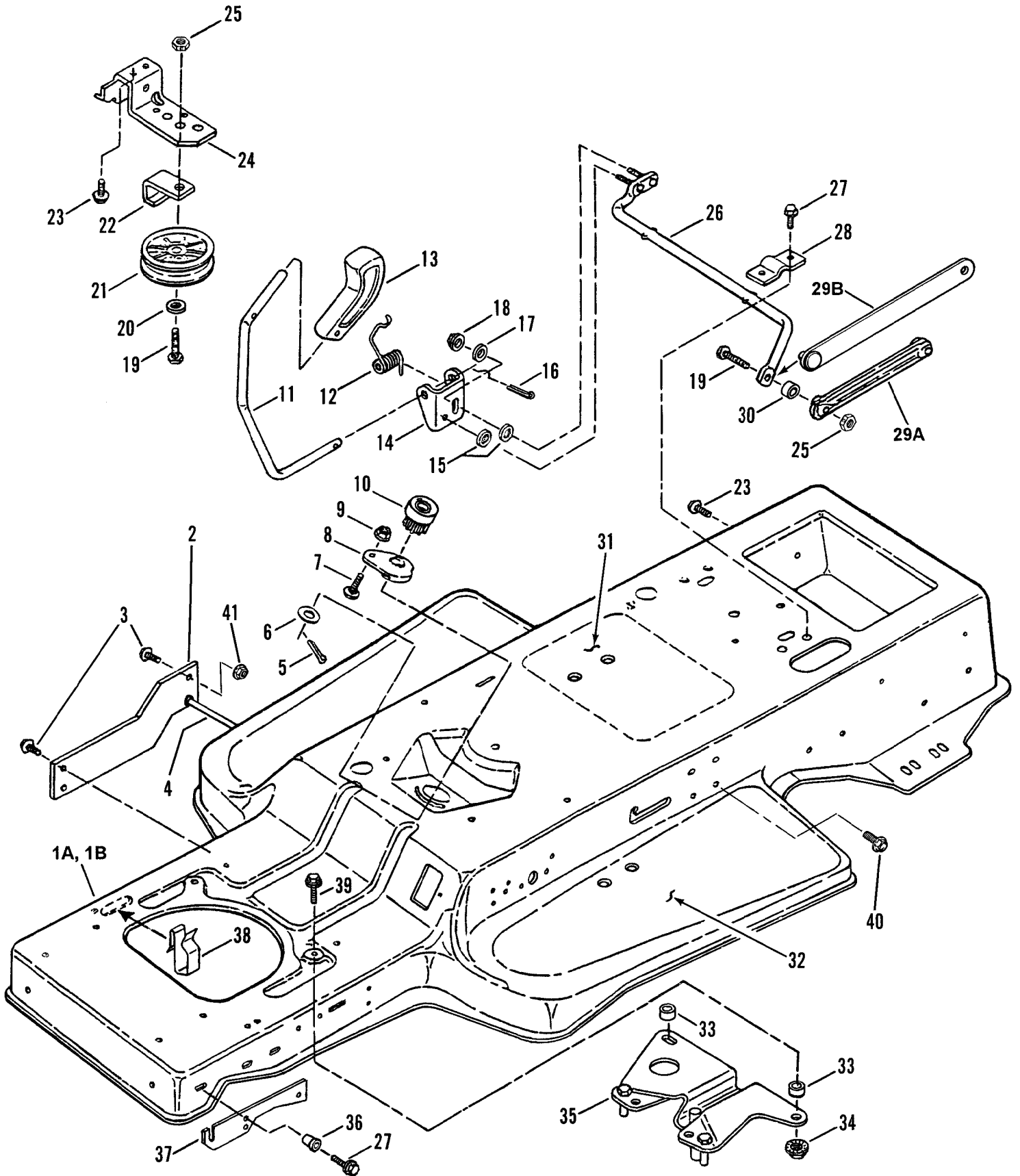
FRAME, CLUTCH, BRAKE & STEERING COMPONENTS

ITEM	PART NO.	DESCRIPTION	ITEM	PART NO.	DESCRIPTION
1A	3-4705	FRAME, Tractor	43	2-2742	BEARING, Flange
1B	4-7194*	FRAME, Tractor	44	4-1236	ASSEMBLY, Clutch Brake Arm
2	1-4451	TIE, Wire	45	4-1244	LATCH, Park Brake
3	2-7936	ROD END (2)	46	9-0361	SCREW, 5/16-18 x 5/8" S.Tap (3)
4	9-0482	NUT, 3/8-24 Hex Jam (2)	47	9-0803	BOLT, 1/4-20 x 5/8" Carriage (6)
5	9-0163	SCREW, 3/8-24 x 1-1/4" Hex Head Cap, Grade 2 (2)	48	9-1240	SCREW, #10-32 x 5/8" H.W.H. (2)
6	2-8420	LINK, Drag	49	1-1016	BUSHING, Nylon 1/2 (2)
7	2-4180	SPACER (3)	50	9-1587	WASHER, 1/2 Flat (2)
8	9-0613	NUT, 3/8-16 Hex Flange Lock	51	1-4341	RING, 1/2" External Retaining (2)
9	5-3568	ASS'Y, Sector Gear (Incl. item 10)	52	9-1001	SCREW, 5/16-18 x 5/8" Truss Head (Torx) (5)
10	1-2706	BEARING, Sector Gear (2)	53	9-1514	WASHER, 3/8 Yellow Zinc Flat (3)
11	3-1036	WASHER, 3/4 Thrust	54	9-1296	WASHER, 1/16" x 11/32" I.D. x 5/8" O.D.
12	9-0583	NUT, 1/4-20 Hex Flange Lock (6)	55	2-3649	WASHER, 5/16 Nylon (2)
13	2-2381	BOLT, 1/2-13 x 2" Shoulder (2)	56	2-8362	KNOB, Push/Pull (5/16-18 Thd.)
14	9-0975	NUT, 1/2-13 Hex Ctr. Lock, Gr. A	57	9-1302	NUT, 3/8-16 Hex, Grade B or 5
15	3-3627	BRACE, Sector Gear	58	3-3557	ARM, Idler (Traction Drive)
16	1-2080	TIE, Cable 7"	59	9-0376	NUT, #10-32 Hex Nyloc (2)
17	9-0585	NUT, 5/16-18 Hx. Flg. Lk., Gr 5 (4)	60	2-3355	SWITCH
18	2-2743	PEDAL, Clutch Brake	61	2-4383	SPRING, Traction Drive
19	1-2661	PAD, Pedal	62A	3-3521	BRACKET, Rear Lift/PTO Lever
20	9-1299	NUT, 3/8-16 Hex Nyloc	62B	4-7068*	BRACKET, Rear Lift/PTO Lever
21	9-0122	WASHER, 3/8 Bright Zinc, Flat (6)	63A	3-4850	LINK, Lift (Models: LT160H42DBV & LT160H42DBV2)
22	2-8091	SPRING, Brake	63B	4-6758*	LINK, Lift
23	2-8037	SWIVEL, Inline Brake	64	3-4384	SPACER (2)
24	9-1593	PIN, 3/8 x 1-7/32" Cotter (Self- Locking) (9)	65A	3-3520	BRACKET, Deck Hang Pivot
25	9-0184	NUT, 5/16-18 Hex Center Lock	65B	4-7055*	BRACKET, Rear Hanger- LH
26	9-1151	SCREW, 5/16-18 x 1-1/4" Self-Tap	66A	4-1256	WELDMENT, Rear Lift
27	1-2264	SPRING	66B	4-7052*	WELDMENT, Rear Lift
28	4-1703	WELDMENT, Brake Arm	67	9-1000	SCREW, 5/16-18 x 7/8" Truss Head (Torx) (2)
29	4-1612	ARM, Transmission Speed Control	68	3-4377	PLATE, Lift Sector (2)
--	4-1709*	ARM, Transmission Speed Control	69	3-3595	EXTENSION, Idler Arm
30	2-8034	ROD, Brake	70	9-1560	SCREW, 3/8-16 x 2-1/4" Hex Head Cap, Grade 5
31	9-0188	WASHER, 5/16 Flat	71	2-3954	PULLEY, Flat Idler, 3.47 O.D.
32	3-4162	PIN, 5/16 Cotter, Self-Locking (2)	72	3-3556	GUIDE, Pulley
33	4-1590	WELDMENT, Shift Link	73	9-1320	WASHER, 3/8" Split Lock
34	5-2920	ASSEMBLY, Shift Lever (Lower)	74A	4-6778	WASHER, Pivot, Stiffener
35	3-4704	LINK, Speed (Lower)	74B	4-7072*	BRACKET, Frame Brace
36	2-4115	ASSEMBLY, Clutch/Brake Cable	75	9-0731*	BOLT, 5/16-18 x 5/8" Short Neck Carriage, Grade 5 (2)
37	5-2431	ASSEMBLY, Foot Shaft Pivot (Includes item 38)	76	9-0368*	SCREW, 5/16-18 x 3/4" HWST (2)
38	1-3864	FITTING, Lube, 3/16	77	2-4159*	COTTER PIN, 1/16 x 1-7/32" Self Lock
39	9-0509	WASHER, 1/2 Internal Tooth Lock	78	9-1489	BRAKE ARM, Transmission
40	9-0619	NUT, 1/2-13 Hex Flange Lock	79	6-3052	KIT, Frame Stiffening
41	1-5992	WASHER, 5/8 Flat (2)	80	2-4604	BOLT, Shoulder 3 7/8"x1/2"-13
42	2-3645	PIN, 3/16 x 1-1/2" Clevis			



***Used on 48" Deck Models**

BLADE ENGAGEMENT & TRANSMISSION CONTROLS



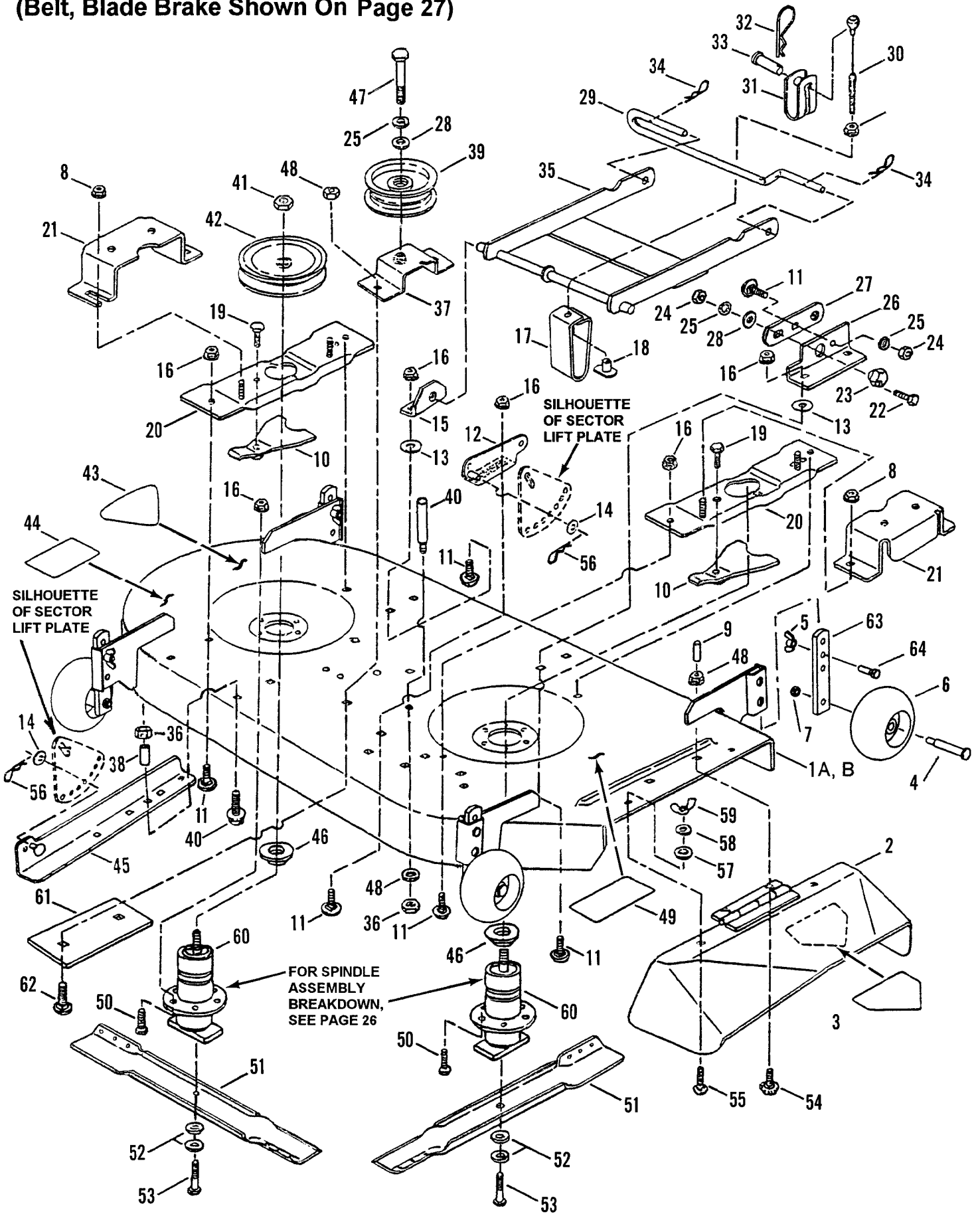
BLADE ENGAGEMENT & TRANSMISSION CONTROLS

ITEM	PART NO.	DESCRIPTION
1A	3-4705	FRAME, Tractor
1B	4-7194*	FRAME, Tractor
2	4-6899*	BRACE, Frame- 48" (2)
3	9-0612*	BOLT, 3/8-16 x 3/4" Hex Flange Lock (8)
4	4-6900*	GUIDE, Belt- 48"
5	9-1598	COTTER-PIN, 1/8 x 3/4"
6	1-4296	WASHER, 1/2 Shim
7	9-1573	BOLT, 1/4-20 x 5/8" Short Neck Carriage, Grade 5
8	5-2562	ASSEMBLY, Steering Adjuster
9	9-1584	NUT, 1/4-20 Hex Flange Lock, Grade 5
10	2-2368	GEAR, Steering Pinion
11	2-3957	LEVER, Shift (Upper)
12	2-4069	SPRING, Shift Lever
13	2-3656	KNOB, Deck Lift Lever
14	3-3541	BRACKET, Shift Lever (Upper)
15	9-1023	WASHER, 1/4 Internal Tooth Lock (2)
16	9-0364	COTTER-PIN, 5/32 x 1"
17	9-0055	WASHER, 1/4 Flat
18	7-6978	NUT, 1/4-20 Hex Nyloc
19	9-1497	SCREW, 3/8-16 x 1-1/2" Hex Head Cap, Grade 5
20	9-1514	WASHER, 3/8 Flat
21	2-4344	PULLEY, Idler
22	3-3556	GUIDE, Pulley Belt
23	9-1524	SCREW, 5/16-18 x 1-1/4" Swage (3)
24	3-5524	SUPPORT, PTO Lever
25	9-1585	NUT, 3/8-16 Hex Center Lock, Grade 5 (2)
26	5-2920	ASSEMBLY, Shift Lever (Lower)
27	9-1151	SCREW, 5/16-18 x 1-1/4" Self-Tapping (4)
28	3-3554	CLIP, 1/2" Diameter (2)
29A	2-4286	LINK, Shift Lever (Upper)
29B	4-1590*	WELDMENT, Shift Link
30	2-4180	SPACER
31	2-8586	DECAL, Instruction
--	4-6557*	DECAL, Instruction
32	2-8203	PAD, Foot (Rubber Deluxe) (2)
33	2-8620	SPACER, 1 1/32 x 5/8 x 5/16" (2)
34	9-0585	NUT, 5/16-18 Hex Flange Lock, Grade 5 (2)
35	5-3900	ASSEMBLY, Anti-Spin/Belt Guide
36	2-4616	BUSHING, Flange (2)
37	3-3488	BRACKET, Hood Pivot (LT160H42DBV Only!)
38	2-8630	CLIP, Wire
39	9-0209	SCREW, 5/16-18 x 1" Hex Head Cap, Grade 2 (2)
40	9-0361*	SCREW, 5/16-18 x 5/8" Hex Washer Self-Tap (7)
41	9-0613*	NUT, 3/8-16 Hex Flange Lock (8)

***Used on 48" Deck Models**

42" CUTTING DECK

(Belt, Blade Brake Shown On Page 27)

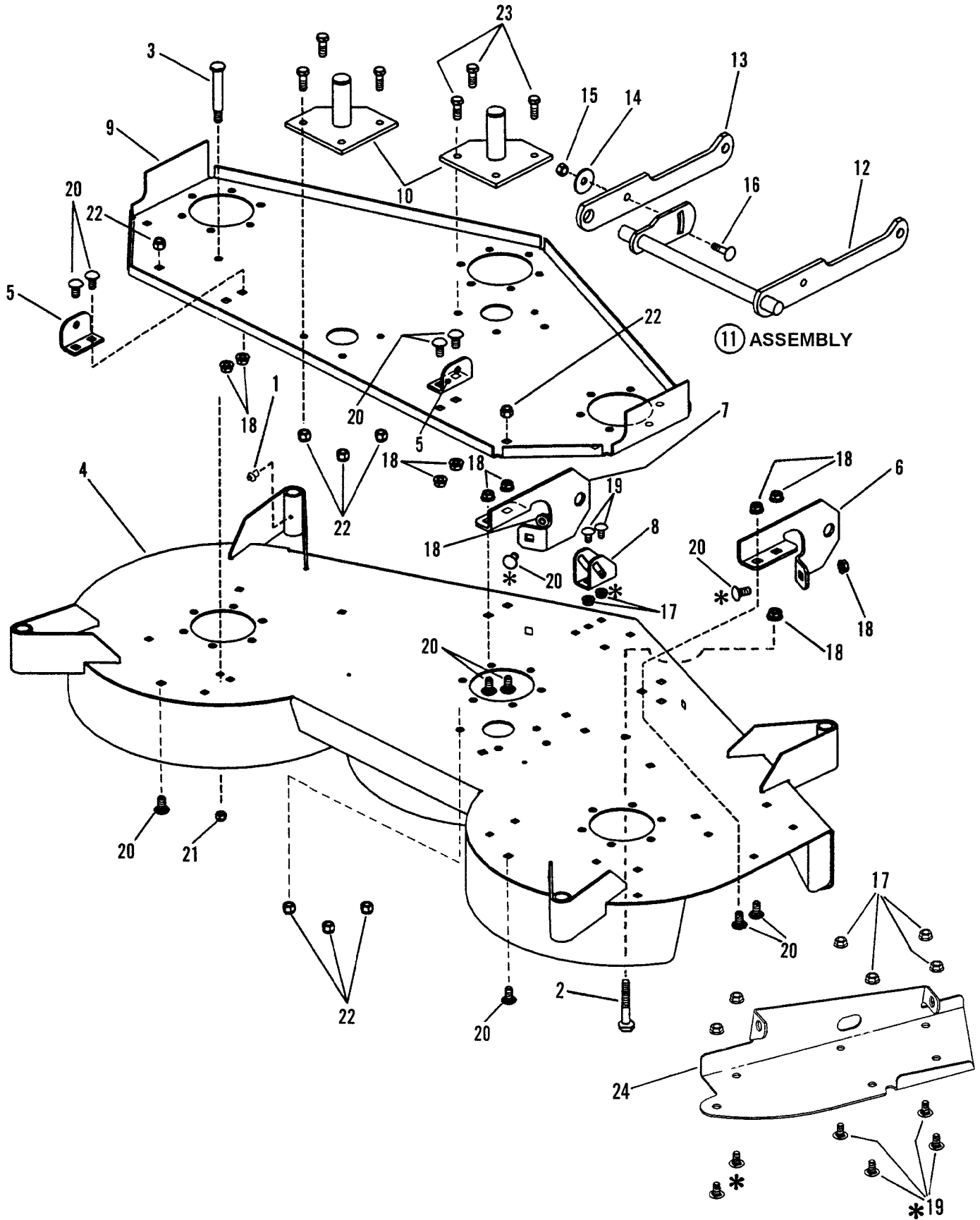


42" CUTTING DECK (Belt, Blade Brake Shown On Page 27)

ITEM	PART NO.	DESCRIPTION	ITEM	PART NO.	DESCRIPTION
1A	5-4168	ASSEMBLY, 42" Cutting Deck (Includes Decal items 44 & 49) (Model: LT160H42DBV)	33	2-9687	PIN, Clevis, 3/8 x 1-1/16"
1B	5-4170	ASSEMBLY, 42" Cutting Deck (Includes Decal items 44 & 49) (Model: LT160H42DBV2)	34	9-1596	PIN, Hair, .148 x 2.62" (2)
2	5-1401	DEFLECTOR, Side Discharge (Includes item 3)	35	4-1480	ASSEMBLY, Front Hanger
3	2-6831	DECAL - DANGER	36	9-1585	NUT, 3/8 - 16 Hex Center Lock, Grade 5 or B
4	2-9265	BOLT, Gage Wheel (4)	37	5-3567	BRACKET, Idler
5	9-1049	NUT, 3/8-16 Wing (4)	38	2-8942	SLEEVE, 1/2 x 13/32 x 3/8"
6	2-9264	WHEEL, Gage (4)	39	1-8574	PULLEY, Idler 4-1/8"
7	9-1585	NUT, 3/8-16 Hex Center Lock, Grade 5 or B (4)	40	9-0614	BOLT, 3/8-16x1-1/2" Hex Flange Lock, Grade 5
8	9-0585	NUT, 5/16-18 Hex Flange Lock, Grade 5 (10)	41	1-0027	NUT, 3/4-16 Hex Jam (2)
9	2-3606	CAP, Vinyl (2)	42	2-4863	PULLEY, Spindle (2)
10	5-1747	ASSEMBLY, Spindle Lock (2)	43	2-4910	DECAL, 42" Deck
11	9-0850	BOLT, 3/8-16 x 3/4" Carriage, Grade 2 (12)	44	1-6973	DECAL - CAUTION (Rotating Blades)
12	4-2578	BRACKET, Lift (Right Side)	45	4-1253	BRACKET, Deck Lift (Left Side)
--	4-2609	BRACKET, Lift (Right Side) (Model: LT160H42DBV2 Only!)	--	4-1257	BRACKET, Deck Lift (Left Side) (Model LT160H42CBV2 Only)
13	9-0600	WASHER, 3/8 Flat (4)	46	1-4407	WASHER, Spindle (2)
14	9-1514	WASHER, 13/32 Flat (2)	47	9-1580	BOLT, 3/8-16 x 1-3/4" Hex Flange Lock
15	3-2297	BRACKET, Front Hanger (Left Side)	48	9-1601	NUT, 5/16-18 Hex Flange Lock, Grade 5 (3)
16	9-0613	NUT, 3/8-16 Hex Flange Lock (15)	49	1-4852	DECAL - CAUTION (Deflector in Place)
17	3-8043	BRACKET, Front Lift Arm Hanger	50	9-0612	BOLT, 3/8-16 x 3/4" Hex Flange Lock (12)
18	9-1567	T-NUT, 5/16-18 Thread	51	2-6691	BLADE, 21" Cutter (2)
19	9-0582	BOLT, 3/8-16 x 1" Hex Flange Lock (2)	52	1-2063	WASHER, Cone, 13/32 x 1-13/32" Diameter (4)
20	5-2487	ASSEMBLY, Spindle Brace (2)	53	9-0824	SCREW, 3/8-24 x 1-1/4" Hex Head Cap, Grade 5 (2)
21	3-4409	GUARD, Pulley (2)	54	9-1303	BOLT, 5/16-18 x 1" Short Neck Carriage, Grade 5 (2)
22	9-0563	SCREW, 3/8-16 x 1" Hex Head Cap, Grade 5	55	9-0799	BOLT, 5/16-18 x 5/8" Carriage, Grade 5 (2)
23	1-5012	ECCENTRIC, Leveling	56	9-1503	PIN, Hair, 3/32 x 1-1/2" (2)
24	9-0130	NUT, 3/8-16 Hex (2)	57	1-1791	RETAINER, 5/16 Bolt (2)
25	9-0118	WASHER, 3/8 Split Lock (3)	58	9-1315	WASHER, 5/16 Split Lock (2)
26	3-8382	BRACKET, Front (Right Side)	59	9-1537	WING-NUT, 5/16-18 (2)
27	3-2432	LINK, Adjustment	60	5-9723	ASSEMBLY, Spindle (2)
28	9-0122	WASHER, 3/8 Flat (2)	61	3-4202	PLATE, Support
29	2-7471	PIN, Deck Hanger	62	9-0636	SCREW, 5/16-18 x 1" Hex Head Cap, Grade 5 (2)
30	2-2893	CABLE, Deck Lift	63	3-5835	POST, Anti Scalp (4)
31	3-2276	CLEVIS, Lift Cable	64	9-1328	SCREW, 3/8-16 x 1-1/4" Hex Head Cap Grade 5 (4)
32	9-1503	PIN, Hair, 3/32 x 1-1/2"			

NOTE: For Complete 42" Cutter Unit Service Decks
For Models LT160H42DBV & LT160H42DBV2, Order
P.N. 6-1952. For Ordering 42" Replacement Decks,
Order P.N. 6-1958.

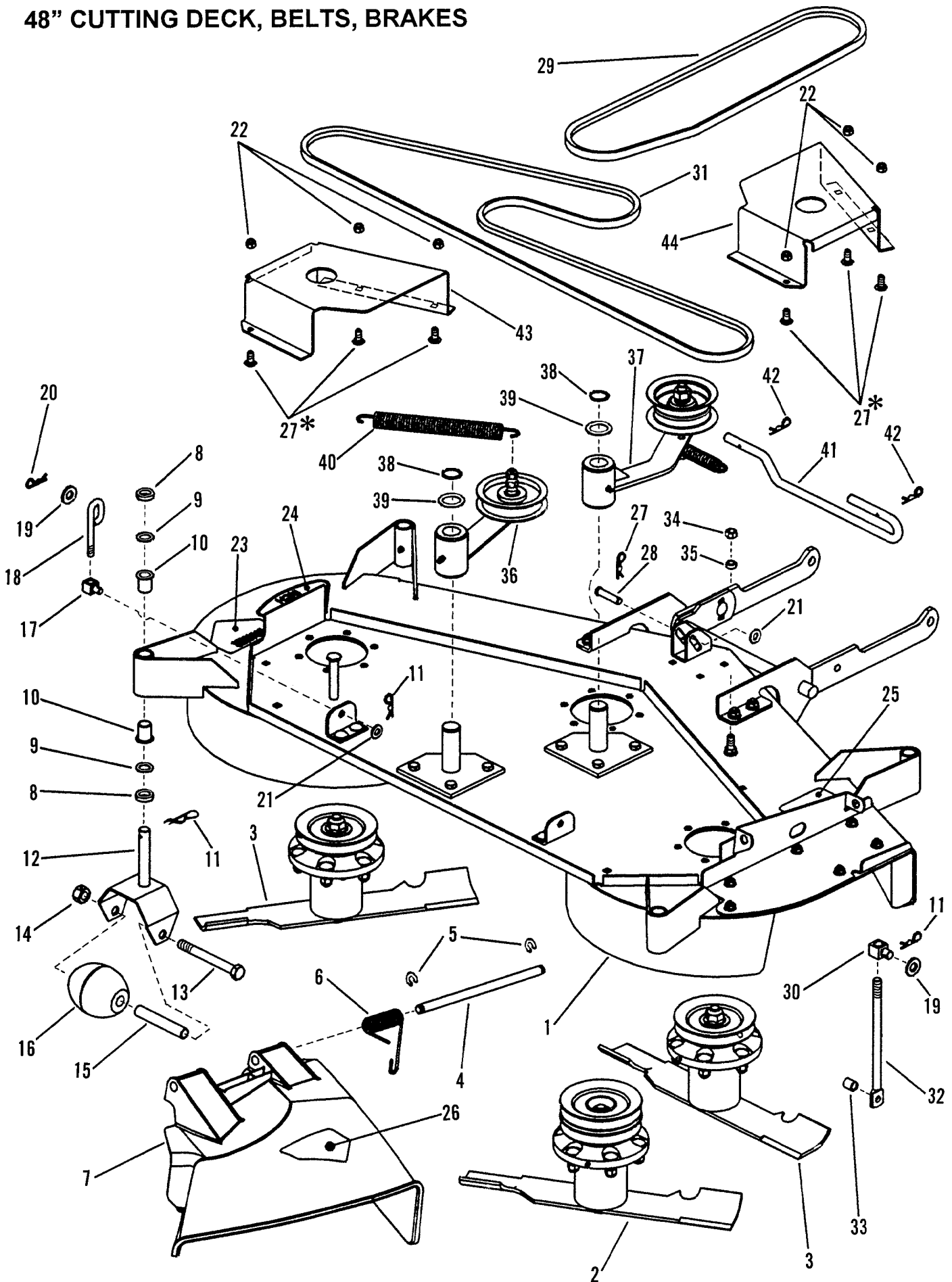
48" CUTTING DECK SUB ASSEMBLY (5-7821)



48" CUTTING DECK SUB ASSEMBLY (5-7821)

ITEM	PART NO.	DESCRIPTION
1	1-3864	FITTING, 3/16" Serrated Grease (4)
2	9-0143	SCREW, 3/8-16 x 1-1/4" Hex Head Cap, Grade 5
3	2-9265	BOLT, Gage Wheel
4	4-6611	WELDMENT, Deck
5	4-6860	BRACKET, Rear Lift- 48" Deck (2)
6	4-6864	BRACKET, Front Hanger- R.H.
7	4-6865	BRACKET, Front Hanger- L.H.
8	4-6870	BRACKET, Front Hanger- 48" Deck
9	4-6929	STIFFENER, 48" Deck
10	4-6947	WELDMENT, Idler Pivot (2)
11	5-4142	ASSEMBLY, Front Lift Arm- 97 Model Year (Includes items 12 thru 16)
12	4-2602	WELDMENT, Front Lift Arm
13	3-5603	ARM, Lift
14	1-2063	WASHER, Cone 3/8" I.D.
15	9-0130	NUT, 3/8-16 Hex
16	9-1716	BOLT, 3/8-16 x 1-1/4", Grade 5
17	9-1601	NUT, 5/16-18 Hex Flange Lock, Grade 5 (8)
18	9-0613	NUT, 3/8-16 Hex Flange Lock (11)
19	9-0799	BOLT, 5/16-18 x 5/8" Short Neck Carriage, Grade 5 (8)
20	9-0850	BOLT, 3/8-16 x 3/4" Short Neck Carriage, Grade 2 (12)
21	9-1298	NUT, 5/16-18 Hex Nyloc
22	9-1299	NUT, 3/8-16 Hex Nyloc (8)
23	9-1304	SCREW, 3/8-16 x 1" Hex Head Cap, Grade 5 (6)
24	5-8119	BRACKET, Hinge

48" CUTTING DECK, BELTS, BRAKES



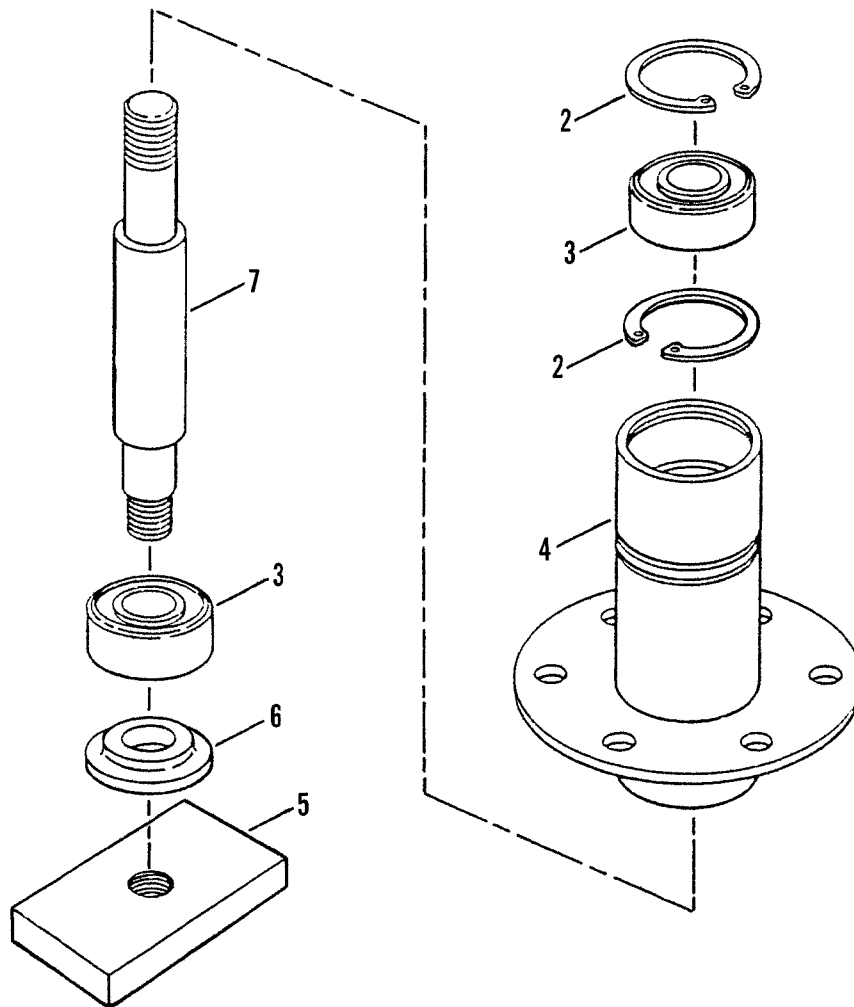
48" CUTTING DECK, BELTS, BRAKES

ITEM	PART NO.	DESCRIPTION
1	5-7821	ASSEMBLY, 48" Deck (see pages 22 & 23)
2	5-7921	ASSEMBLY, Drive Spindle (see page 31)
3	5-7920	ASSEMBLY, L.H./R.H. Spindle (2) (see page 31)
4	7-2044	PIN, Chute Hinge
5	1-4341	RING, Retaining (2)
6	3-5813	SPRING, Torsion (Side Chute)
7	2-9425	CHUTE, Side Discharge
8	7-6436	WASHER, Spacer (8)
9	9-1628	WASHER, 3/8" Flat (8)
10	4-6278	BEARING, 1/2 x 3/4" Plastic (8)
11	9-1503	PIN, 3/32 x 1-1/2" Hair (5)
12	4-6302	WELDMENT, Anti-Scalp Wheel (4)
13	9-0993	SCREW, 1/2-20 x 4-1/2" Hex Head Cap, Grade 5 (4)
14	9-0266	NUT, 1/2-20 Hex Center Lock, Grade 5 (4)
15	4-6301	SLEEVE, Caster Wheel (4)
16	7-9226	ROLLER, Low Density Polyethylene (4)
17	2-4607	SWIVEL, Brake Link (2)
18	4-6790	ROD, Rear Lift (2)
19	9-1587	WASHER, 1/2" Flat (3)
20	9-1594	PIN, 1/2" Self-Locking Cotter (4)
21	9-1514	WASHER, 3/8" Flat (4)
22	9-1298	NUT, 5/16-18 Hex Nyloc (6)
23	1-3010	DECAL, Warning- CPSC "Cut Finger" (2)
24	2-4431	DECAL, 48" Deck
25	4-6720	DECAL, Chute/Deflector Warning
26	2-6831	DECAL, CPSC Heavy Adhesive
27	9-1508	BOLT, 5/16-18 x 3/4" Short Neck Carriage, Grade 5 (6)
28	9-1977	PIN, 3/8 x 1-1/2" Clevis
29	4-6926	BELT, 50.65 HA (Electric Clutch)
30	2-6827	SWIVEL, Lift
31	2-8334	BELT, 94.46 HA
32	4-6873	ROD, Front Lift
33	2-3478	SPACER, Axle
34	9-1585	NUT, 3/8-16 Hex Center Lock
35	2-4180	SPACER, Tie Rod
36	5-7923	ASSEMBLY, Deck Idler (see pages 28 & 29)
37	5-7950	ASSEMBLY, Drive Idler Arm (see pages 28 & 29)
38	1-2709	RING, 1" External Retaining (2)
39	2-3747	BUSHING, 1" Machine (2)
40	2-9272	SPRING, Extension- Primary Idler
41	2-7471	PIN, Deck Hanger
42	9-1596	PIN, 3/32 x 1-1/2" Hair (2)
43	4-7086	COVER, L.H. Spindle
44	4-7087	COVER, R.H. Spindle

***NOTE: THE HEADS OF THESE FASTENERS ON FACING PAGE ARE LOCATED INSIDE THE DECK.**

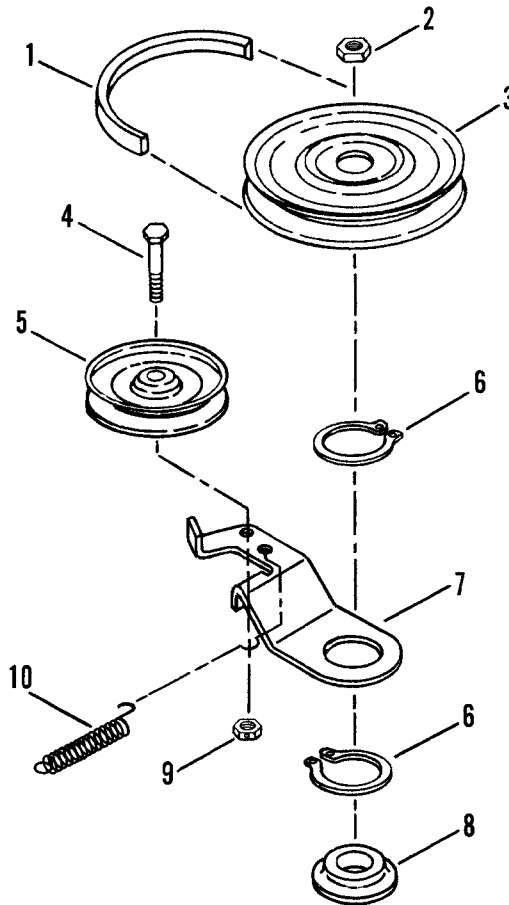
SPINDLE ASSEMBLY - 42" CUTTING DECK

① ASSEMBLY



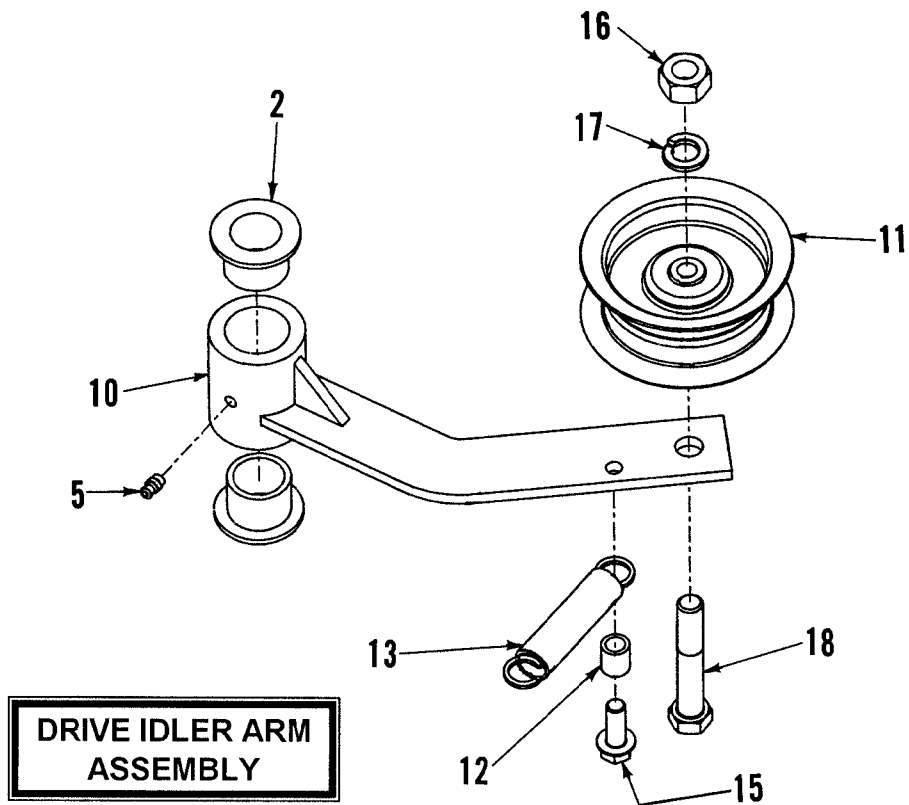
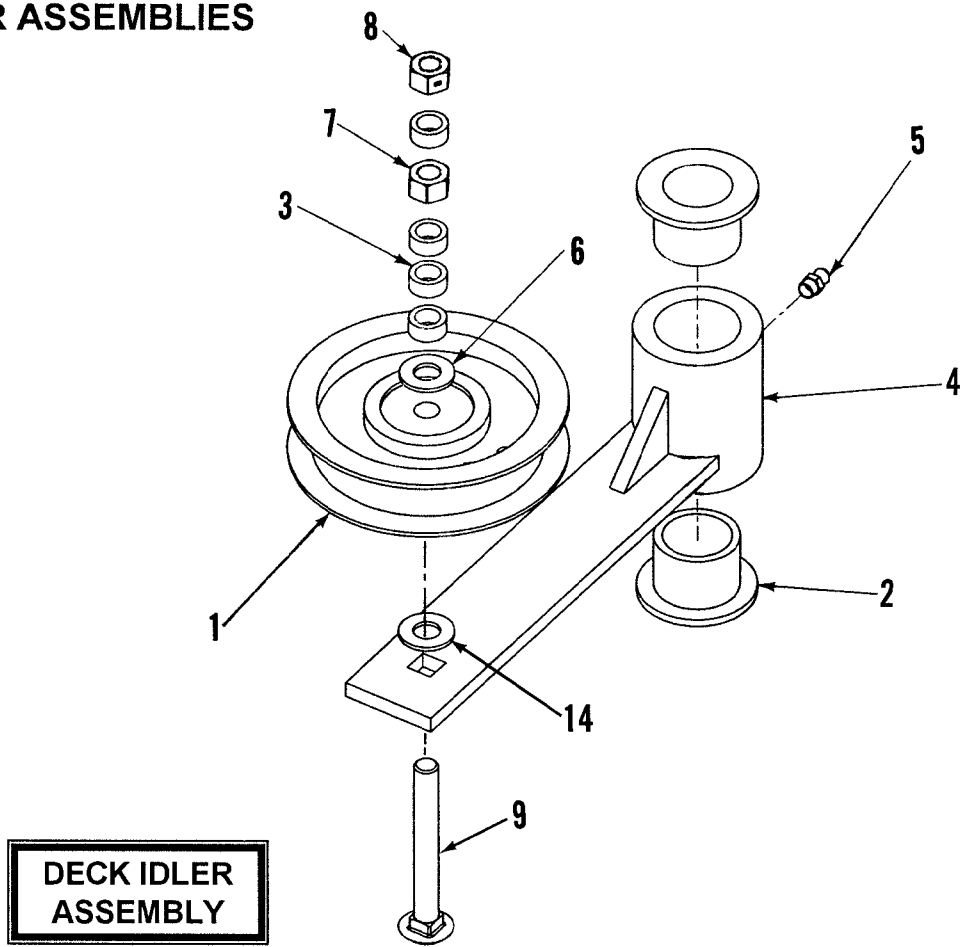
ITEM	PART NO.	DESCRIPTION
1	5-9723	ASSEMBLY, Spindle Housing, 42" Cutting Deck (Models: LT160H42DBV & LT160H42DBV2) (Includes items 2 thru 7)
2	1-2491	RING, External Retaining 1-3/4" (2)
3	1-3313	BEARING, Spindle (2)
4	4-7917	HOUSING, Spindle
5	3-2294	HOLDER, Blade
6	1-4407	WASHER, Spindle
7	2-7668	SPINDLE 6.5"

BELT, BLADE BRAKE - 42" CUTTING DECK



ITEM	PART NO.	DESCRIPTION
1	2-9205	BELT, Drive
2	1-0027	NUT, 3/4-16 Hex Jam
3	2-4863	PULLEY, Drive
4	9-1580	SCREW, 3/8-16 x 2" Hex Head Cap, Grade 5
5	1-8574	PULLEY, Idler
6	1-0740	RING, Retaining (2)
7	3-6222	ARM, Brake
8	1-4407	WASHER, Spindle
9	9-1585	NUT, 3/8-16 Hex Center Lock, Grade 5 or B
10	2-8941	SPRING, Idler

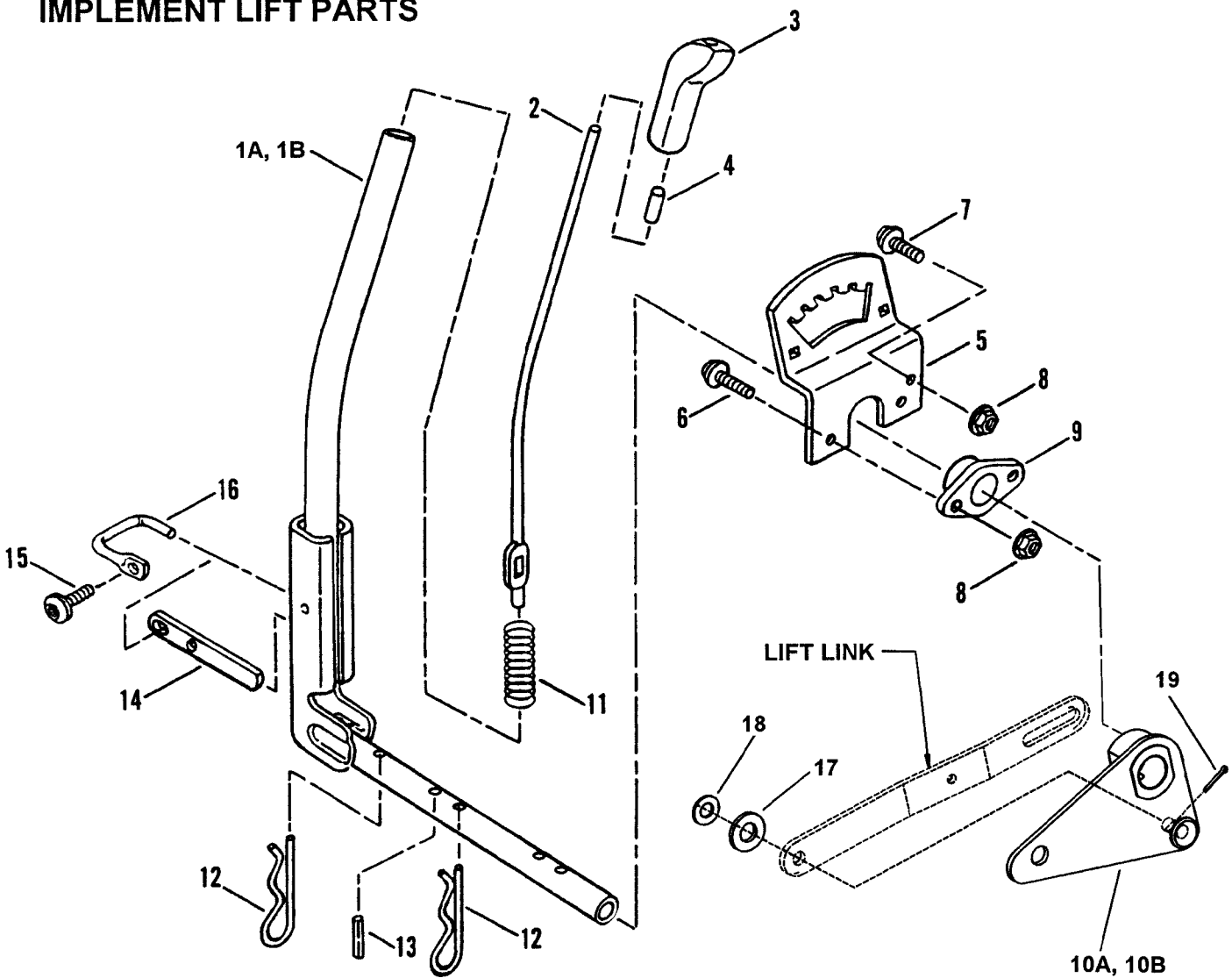
48" DECK IDLER ASSEMBLIES



48" DECK IDLER ASSEMBLIES

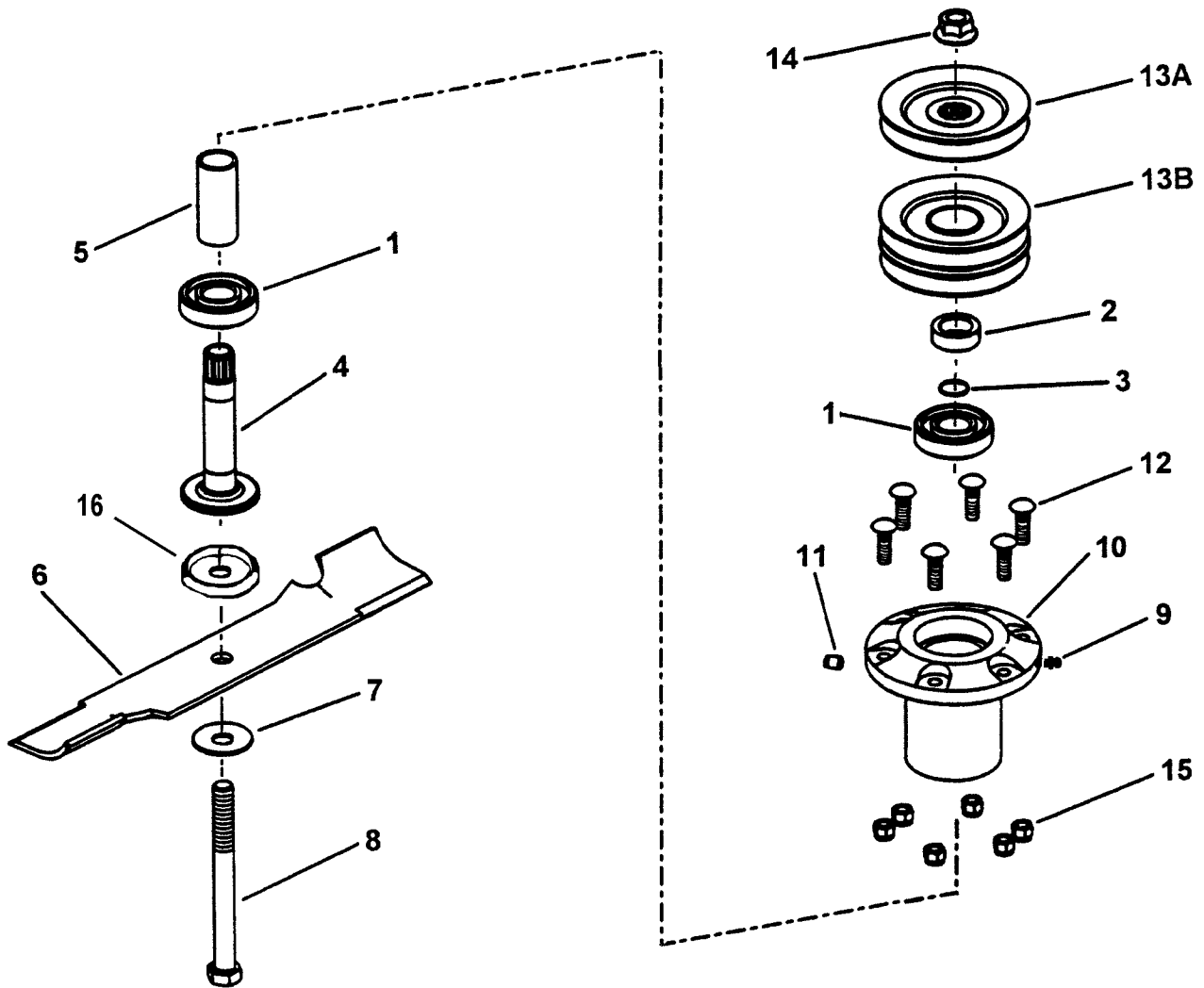
ITEM	PART NO.	DESCRIPTION
1	1-8574	FLAT IDLER, 4-1/8"
2	2-3556	BUSHING, Caster (4)
3	2-4180	SPACER, Tie Rod (4)
4	4-6949	WELDMENT, Idler Arm
5	7-6998	FITTING, Lube 1/4-28 Straight (2)
6	9-0122	WASHER, 3/8" Flat
7	9-1302	NUT, 3/8-16 Hex, Grade 5 or B
8	9-1585	NUT, 3/8-16 Hex Center Lock, Grade 5 or B (2)
9	9-1155	BOLT, 3/8-16 x 3", Round Head Square Neck Grade 5
10	4-6717	WELDMENT, Idler Arm
11	2-6310	PULLEY, Flat Idler- 3-1/4" O.D.
12	2-3478	SPACER
13	2-9134	SPRING, Extension
14	9-1514	WASHER, 3/8" SAE Flat
15	9-0324	SCREW, 3/8-16 x 1", Hex Washer Self-Tap
16	9-1316	NUT, 1/2-13 Hex, Grade 5 or B
17	9-1322	WASHER, 1/2" Split Lock
18	9-1821	SCREW, 1/2-13 x 3" Hex Head Cap

IMPLEMENT LIFT PARTS



ITEM	PART NO.	DESCRIPTION
1A	4-1655	LEVER, Implement Lift (Models: LT160H42DBV & LT160H42DBV2)
1B	5-8258	LEVER, Implement Lift (Model LT180H48DBV2)
2	2-2565	ROD, Lift Lever
3	1-9363	KNOB, Lift Lever
4	1-4361	CAP, Lift Lever Rod
5	3-3449	QUADRANT, Lift Lever
6	9-1000	SCREW, 5/16-18 x 7/8" Truss Head (Torx) (2)
7	9-1001	SCREW, 5/16-18 x 5/8" Truss Head (Torx)
8	9-0585	NUT, 5/16-18 Hex Flange Lock, Grade 5 (2)
9	2-2567	PIVOT, Lift Lever
10A	4-1255	BELLCRANK, Lift Lever
10B	4-7137	BELLCRANK, Lift Lever (Model LT180H48DBV2)
11	2-2566	SPRING, Latch Detent
12	1-3844	PIN, Hair, 5/32 x 2-5/8" (2)
13	2-2895	PIN, Dowel, 1/4 x 1-1/8"
14	2-2568	DETENT, Latch
15	9-0999	SCREW, 1/4-20 x 5/8" Truss Head (Torx)
16	2-4742	LATCH, Pivot
17	9-1587	WASHER, 1/2" Flat
18	9-1514	WASHER, 3/8" Flat
19	9-1597	PIN, 3/32 x 3/4" Cotter

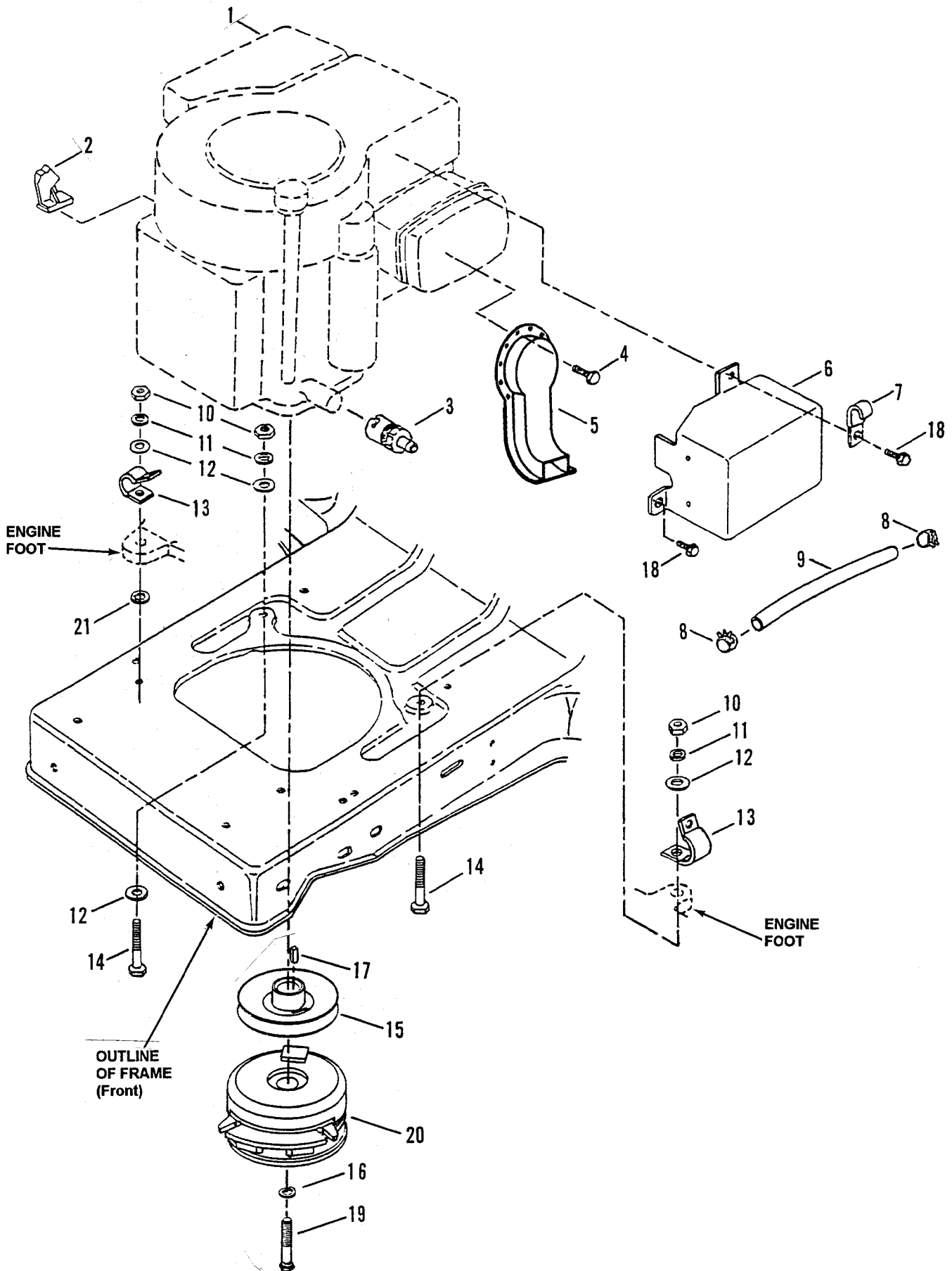
SPINDLE ASSEMBLIES – 48” CUTTING DECK



ITEM	PART NO.	DESCRIPTION
--	5-4011	ASSEMBLY, Spindle (contains indented items below) (3)
1	2-9422	BEARING, Sealed (2)
2	2-9270	WASHER, Spindle
3	2-9274	SNAP-RING, Spindle Shaft
4	2-9253	SHAFT, Spindle
5	2-9254	SPACER, Bearing
6	2-9247	BLADE, 16-1/2" (48" Deck)
7	1-6440	WASHER, Beveled
8	9-1980	BOLT, 5/8-18 x 6-5/8" Hex Head, Grade 5
9	2-9275	FITTING, Lube
10	2-9252	HOUSING, Cutter
11	2-9384	VENT, Spindle
12	2-9302	BOLT, 3/8-16 x 1-1/4" Rib Necked (6)
13A	4-6917	PULLEY, Spindle (48" Deck LH & RH)
13B	4-6794	PULLEY, Spindle (48" Deck/Drive)
14	9-1736	NUT, 5/8-18 Hex Flange Lock, Grade 5
15	9-1299	NUT, 3/8-16 Hex Nyloc (6)
16	7-2077	CUP, Spindle Cover

NOTE: Part # 5-4017 (Spindle Housing sub-assembly) contains one of item 10 & six of item 12.

ENGINE COMPONENTS
 (Model: LT160H42DBV)



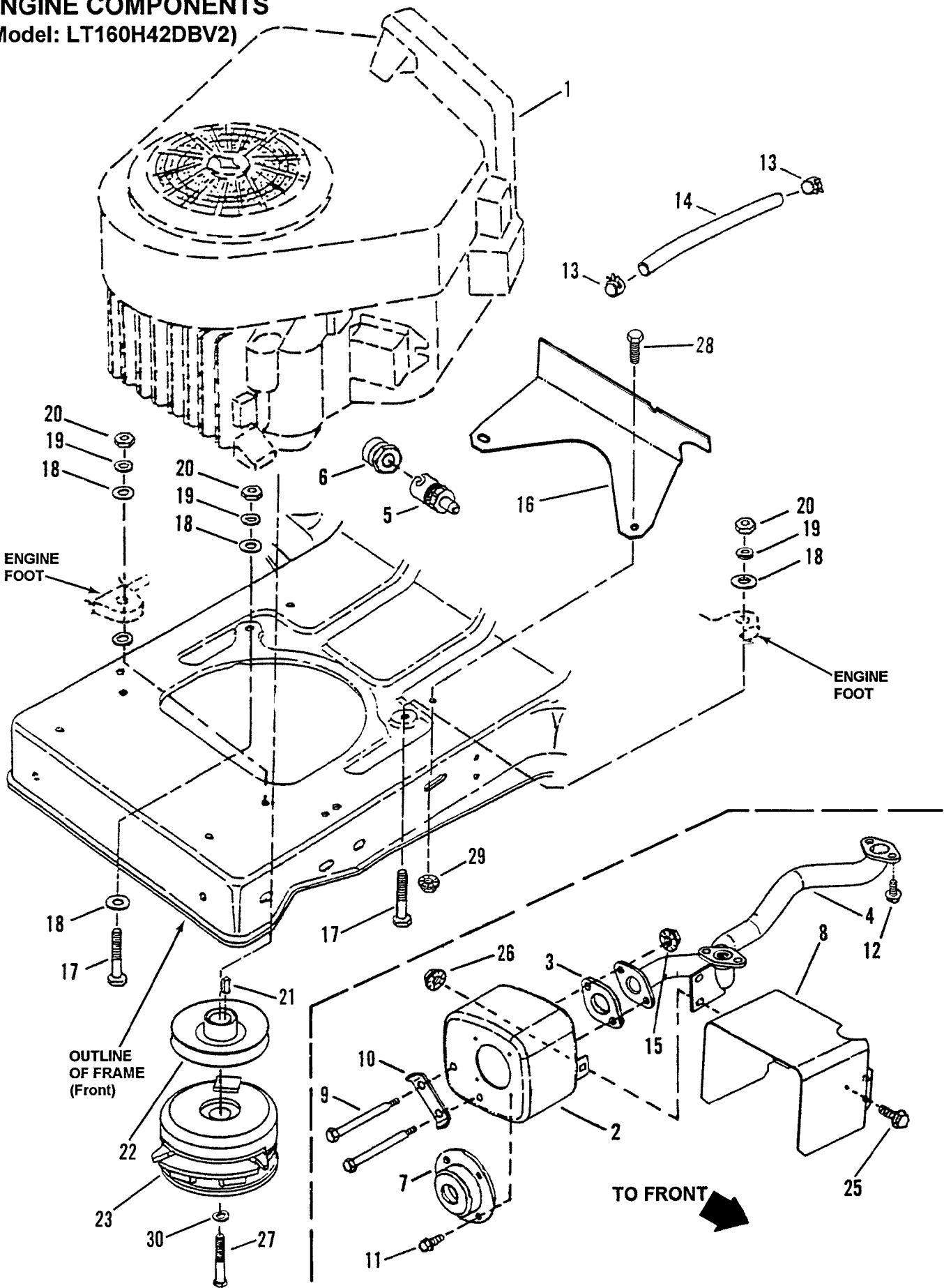
ENGINE COMPONENTS
(Model: LT160H42DBV)

ITEM	PART NO.	DESCRIPTION
1	**	ENGINE, B. & S. 16.0 HP OHV, Model 28Q777, Type 0672, Trim A1 (Model: LT160H42DBV)
2	2-5079	CLIP, Speed
3	2-7972	ASSEMBLY, Oil Valve
4	9-1581	SCREW, #8-18 x 1/2" Hex Head, Self-Tapping (3)
5	4-1537	EXTENSION, Muffler
6	4-1269	HEAT SHIELD, Muffler
7	2-6482	CLIP, "J" Type
8	1-2222	CLAMP, Fuel Line (2)
9	2-3479	LINE, Fuel, 16" Long
10	9-1511	NUT, 5/16-18 Hex, Grade 5 or B (4)
11	9-1315	WASHER, 5/16 Split Lock (4)
12	9-1296	WASHER, 5/16 Flat (5)
13	1-5861	CLIP, Wiring Harness (2)
14	9-0669	SCREW, 5/16-18 x 1-3/4" Hex Head Cap, Grade 5 (2)
15	2-8584	PULLEY, Traction Drive
16	9-1301	WASHER, 7/16 Split Lock
17	1-6755	KEY, 1/4 x 1/4 x 3/4" Square
18	9-1579	BOLT, 1/4-20 x 1/2" Hex Flange Lock, Grade 5 (2)
19	9-1703	SCREW, 7/16-20 x 2-1/2" Hex Head Cap, Special, Grade 5
20	5-3740	CLUTCH/BRAKE
21	9-0391	WASHER, 5/16 Internal Tooth Lock

****PURCHASE ENGINE & ENGINE PARTS
OTHER THAN THOSE LISTED, FROM
ENGINE SERVICE OUTLETS.**

ENGINE COMPONENTS

(Model: LT160H42DBV2)



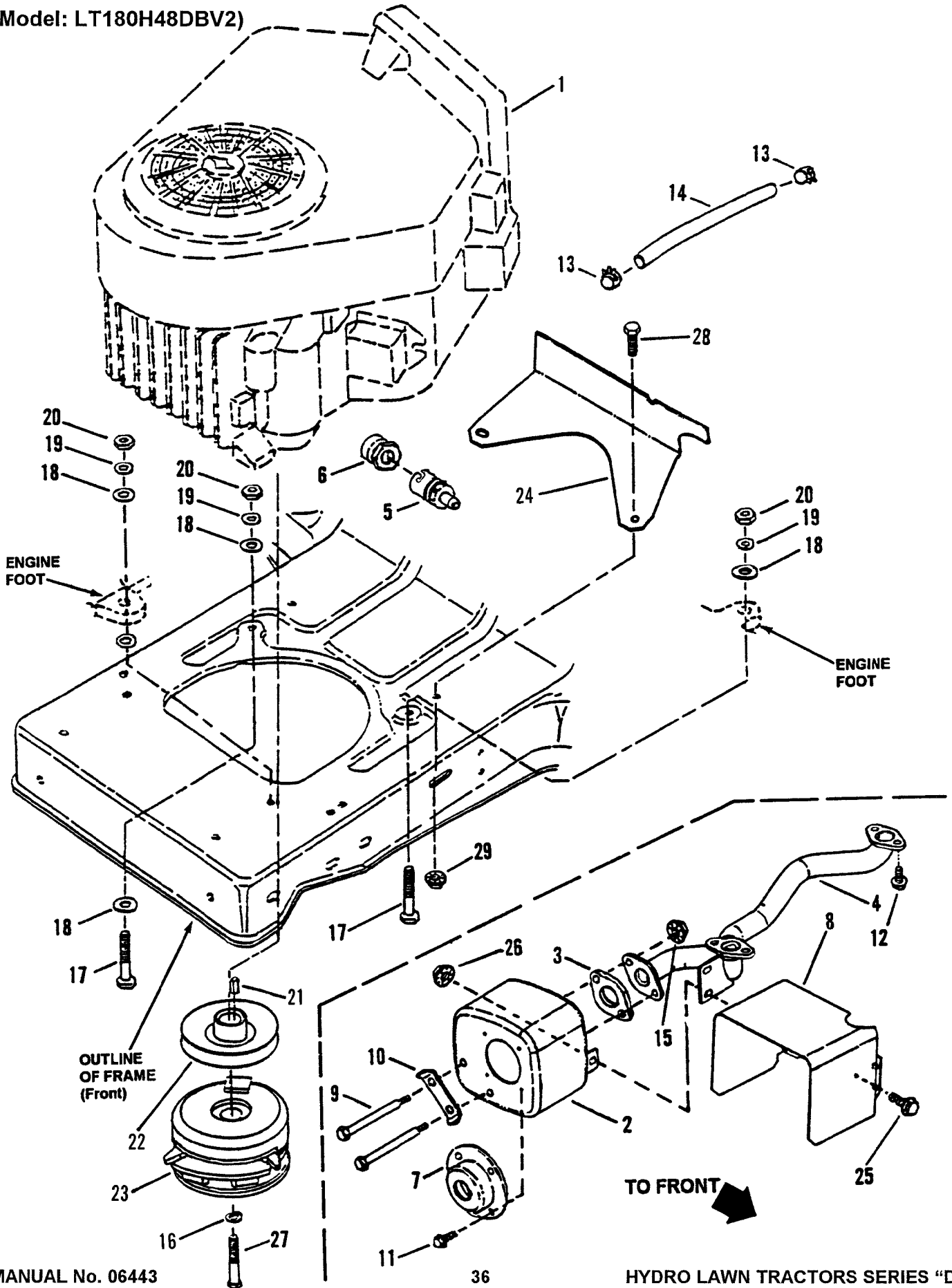
ENGINE COMPONENTS (Model: LT160H42DBV2)

ITEM	PART NO.	DESCRIPTION
1	**	ENGINE, B. & S., 16.0 HP V-Twin, Model 303777, Type 1150, Trim A1
2	2-4241	MUFFLER
3	1-4509	GASKET, Muffler/Exhaust
4	4-1742	MANIFOLD, Exhaust
5	2-7972	ASSEMBLY, Oil Valve Drain
6	2-2486	EXTENSION, Oil Drain
7	2-6778	DEFLECTOR, Exhaust
8	3-4767	SHIELD, Muffler Heat
9	2-4161	BOLT, 5/16-18 x 3-1/2" Shoulder, Hex Head (2)
10	2-4566	LOCK, Screw
11	9-1581	SCREW, #8-18 x 1/2" Self-Tapping (4)
12	9-0858	SCREW, 5/16-18 x 1/2" Hex Washer Head, Self Tapping (4)
13	1-2222	CLAMP, Fuel Line (2)
14	2-3479	LINE, Fuel, 16" Long
15	9-1601	NUT, 5/16-18 Hex Flanged Lock, Grade 5
16	3-4762	SHIELD, Heat
17	9-0669	SCREW, 5/16-18 x 1-3/4" Hex Head Cap, Grade 5 (2)
18	9-1296	WASHER, 5/16 Flat Grade 5 (4)
19	9-1315	WASHER, 5/16 Split Lock (2)
20	9-1511	NUT, 5/16-18 Hex Grade 5 or B (2)
21	1-6755	KEY, 1/4 x 1/4 x 3/4" Square
22	2-8584	PULLEY, Traction Drive
23	5-3740	CLUTCH/BRAKE
24	3-4762	SHIELD, Heat
25	2-7172	SCREW, 1/4-20 x 5/8" Hex Head Cap, Grade 5 (2)
26	9-1584	NUT, 1/4 -20 Hex Flanged Lock, Grade 5 (2)
27	9-1703	SCREW, 7/16-20 x 2-1/2 Hex Head Cap, Special, Grade 5
28	9-0209	SCREW, 5/16-18 x 1" Hex Head Cap, Grade 2 (2)
29	9-0585	NUT, 5/16-18 Hex Flange Lock, Grade 5 (2)
30	9-1301	WASHER, 7/16 Split Lock

****PURCHASE ENGINE & ENGINE PARTS
OTHER THAN THOSE LISTED, FROM
ENGINE SERVICE OUTLETS.**

ENGINE COMPONENTS

(Model: LT180H48DBV2)



ENGINE COMPONENTS
(Model: LT180H48DBV2)

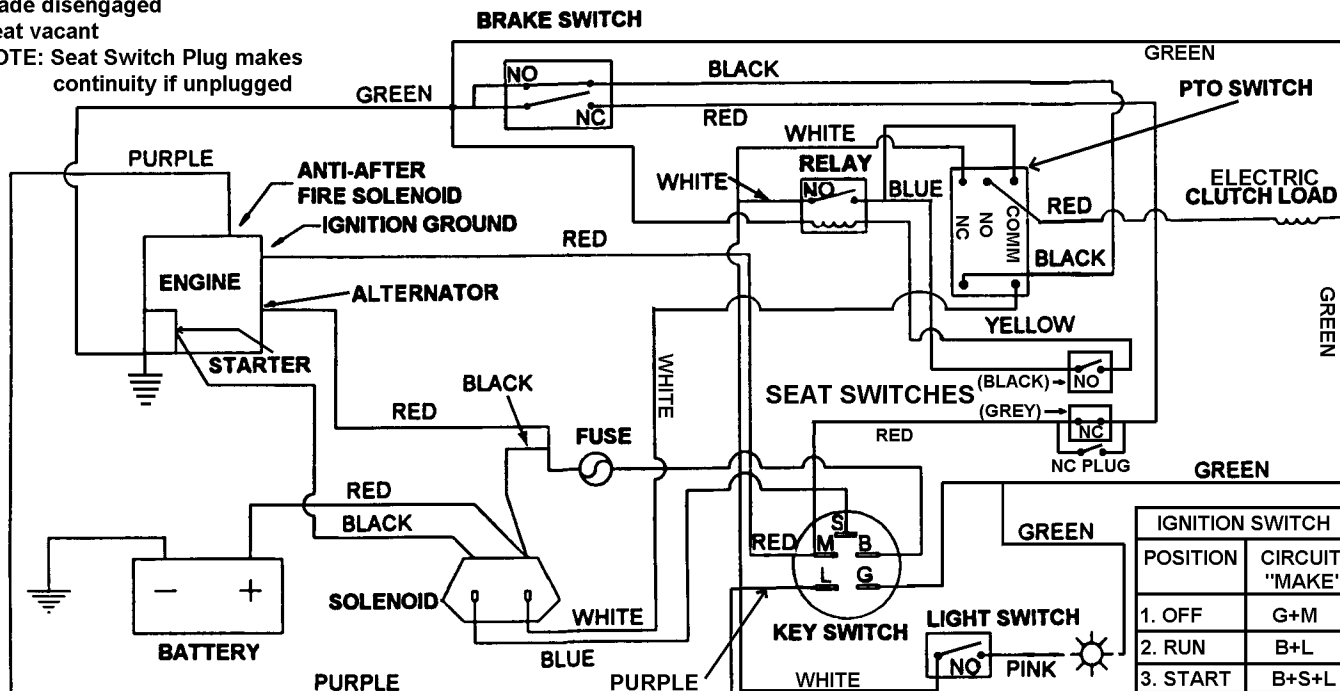
ITEM	PART NO.	DESCRIPTION
1	**	ENGINE, B. & S., 18.0 HP V-Twin, Model 350777, Type 1143, Trim E1
2	2-4241	MUFFLER
3	1-4509	GASKET, Muffler/Exhaust
4	4-1742	MANIFOLD, Exhaust
5	2-7972	ASSEMBLY, Oil Valve Drain
6	2-2486	EXTENSION, Oil Drain
7	2-6778	DEFLECTOR, Exhaust
8	3-4767	SHIELD, Muffler Heat
9	2-4161	BOLT, 5/16-18 x 3-1/2" Shoulder, Hex Head (2)
10	2-4566	LOCK, Screw
11	9-1581	SCREW, #8-18 x 1/2" Self-Tapping (4)
12	9-0858	SCREW, 5/16-18 x 1/2" Hex Washer Head, Self Tapping (4)
13	1-2222	CLAMP, Fuel Line (2)
14	2-9982	LINE, Fuel, 14" Long
15	9-1601	NUT, 5/16-18 Hex Flanged Lock, Grade 5
16	9-1301	WASHER, 7/16" Split Lock
17	9-0669	SCREW, 5/16-18 x 1-3/4" Hex Head Cap, Grade 5 (2)
18	9-1296	WASHER, 5/16 Flat Grade 5 (4)
19	9-1315	WASHER, 5/16 Split Lock (2)
20	9-1511	NUT, 5/16-18 Hex Grade 5 or B (2)
21	1-6755	KEY, 1/4 x 1/4 x 3/4" Square
22	2-8584	PULLEY, Traction Drive
23	5-3740	CLUTCH/BRAKE
24	3-4762	SHIELD, Heat
25	2-7172	SCREW, 1/4-20 x 5/8" Hex Head Cap, Grade 5 (2)
26	9-1584	NUT, 1/4 -20 Hex Flanged Lock, Grade 5 (2)
27	9-1703	SCREW, 7/16-20 x 2-1/2 Hex Head Cap, Special, Grade 5
28	9-0209	SCREW, 5/16-18 x 1" Hex Head Cap, Grade 2 (2)
29	9-0585	NUT, 5/16-18 Hex Flange Lock, Grade 5 (2)

<p>** PURCHASE ENGINE & ENGINE PARTS OTHER THAN THOSE LISTED, FROM ENGINE SERVICE OUTLETS.</p>

ELECTRICAL - (Model: LT160H42DBV)

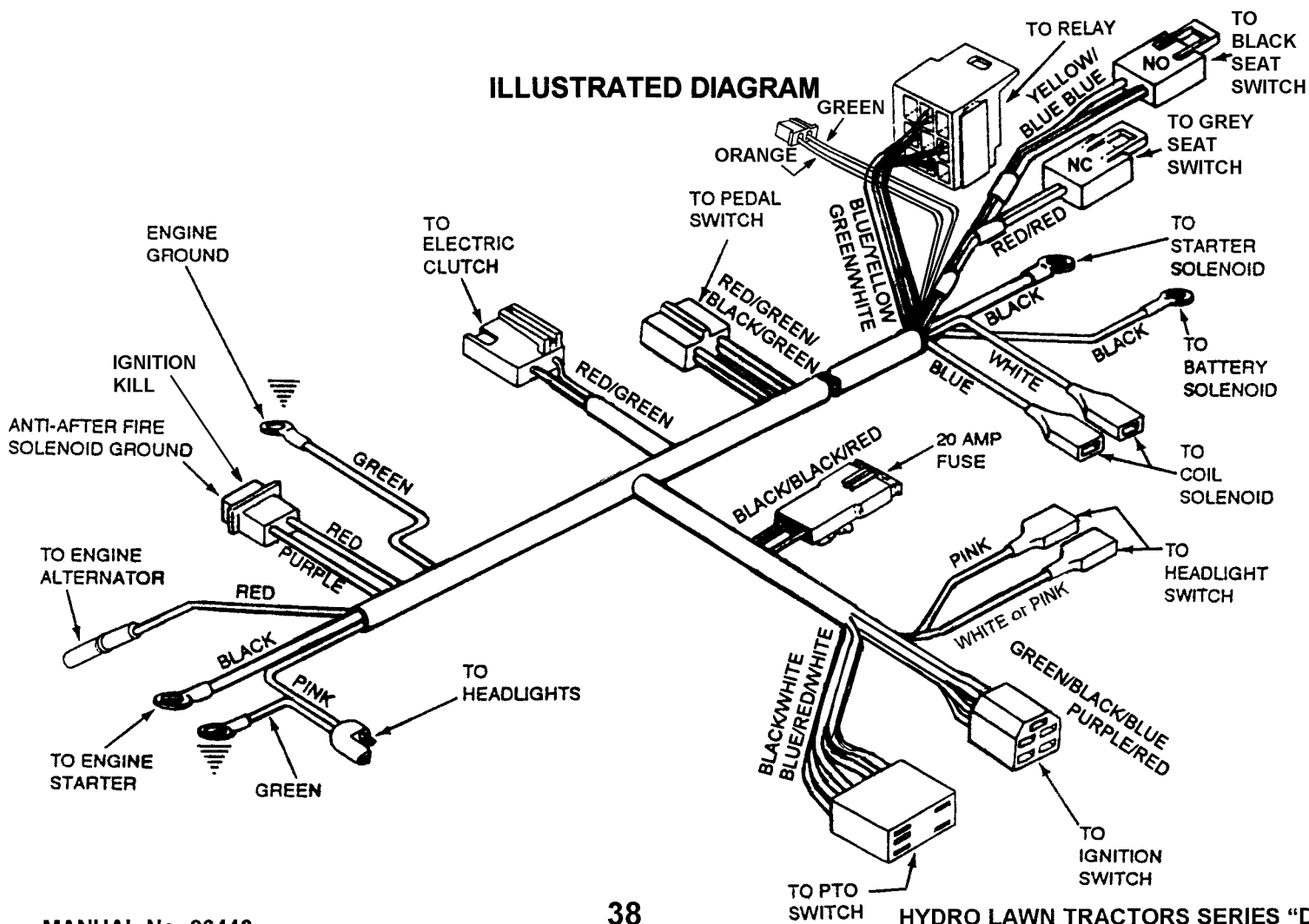
NOTE: Switches shown with,
Pedal locked down
Blade disengaged
Seat vacant

NOTE: Seat Switch Plug makes
continuity if unplugged



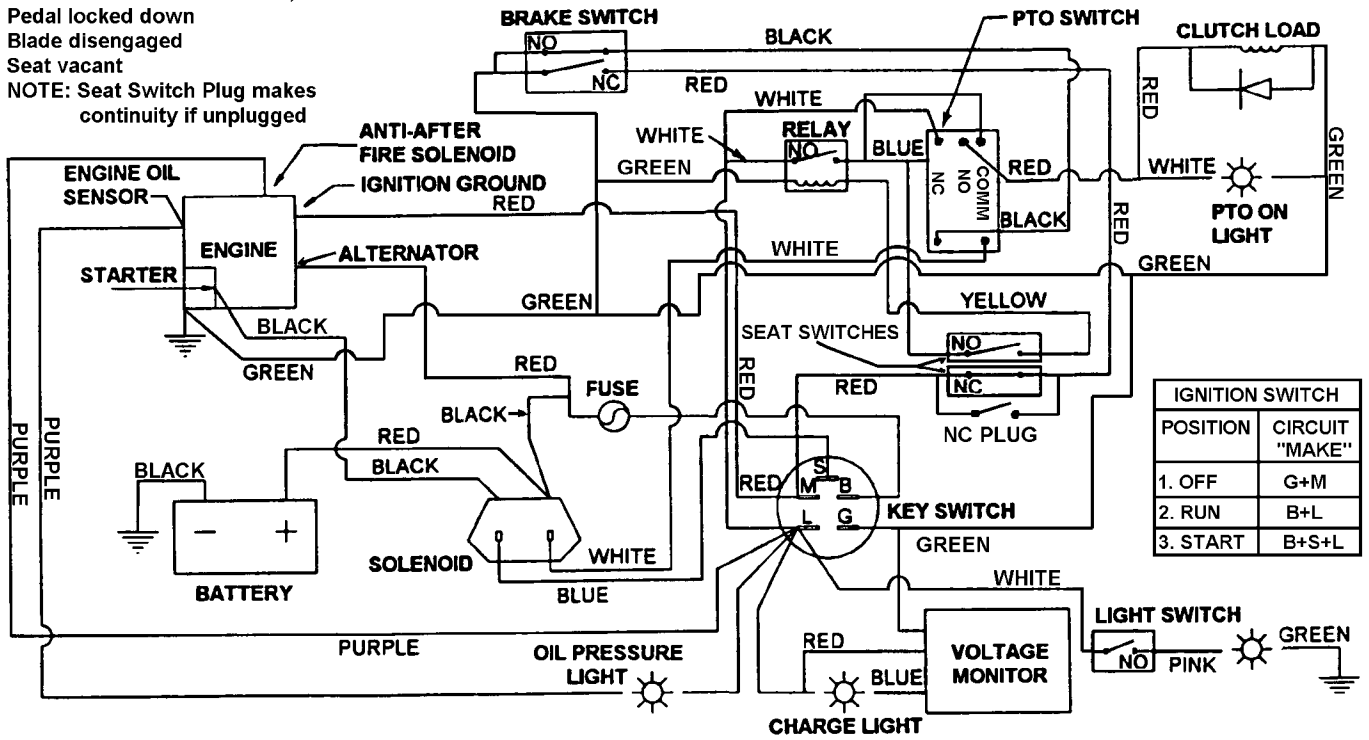
SCHEMATIC - WIRING DIAGRAM Part No. 2-8571
(MODEL: LT160H42DBV)

ILLUSTRATED DIAGRAM



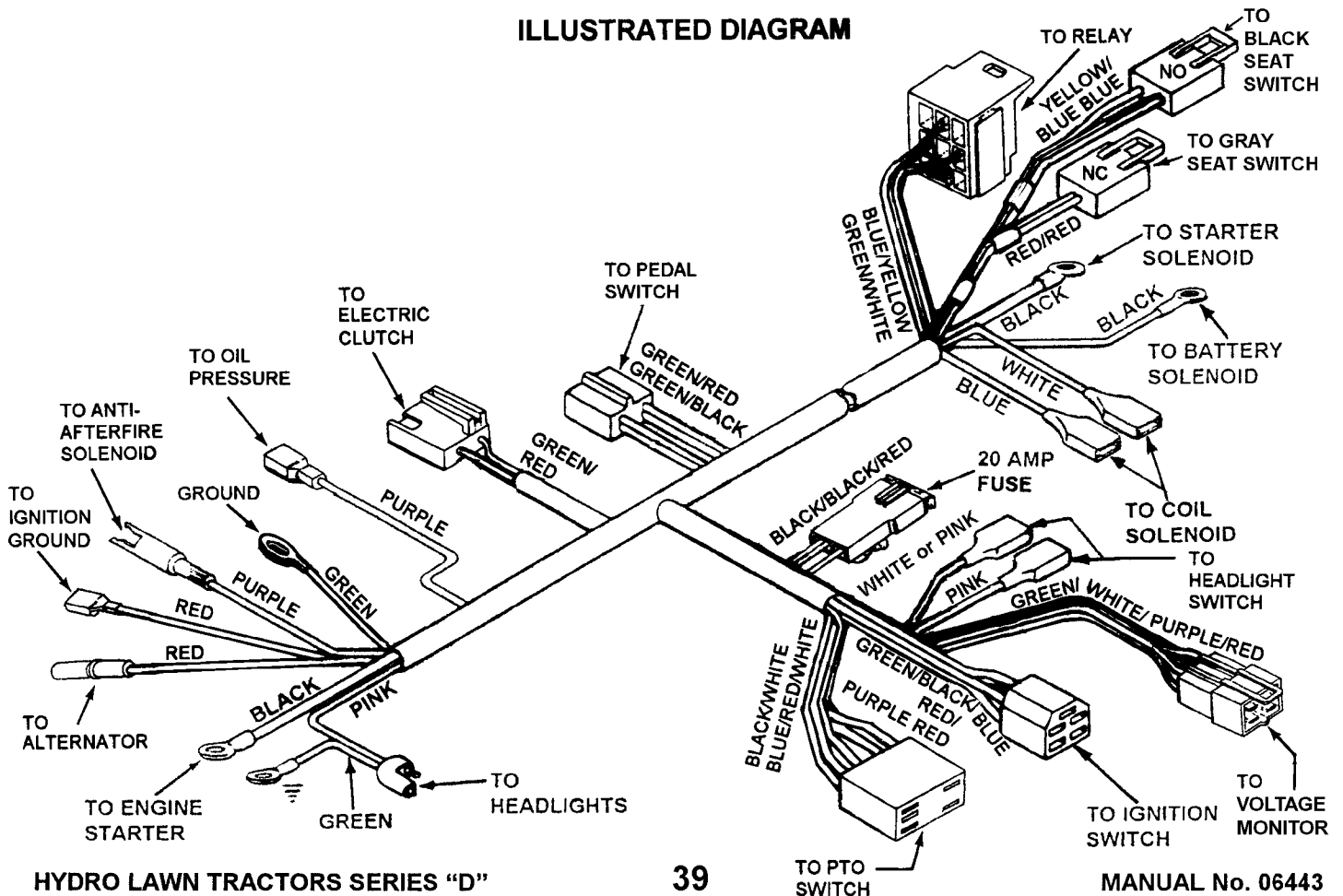
(Models: LT160H42DBV2 & LT180H48DBV2) ELECTRICAL

NOTE: Switches shown with,
Pedal locked down
Blade disengaged
Seat vacant
NOTE: Seat Switch Plug makes
continuity if unplugged

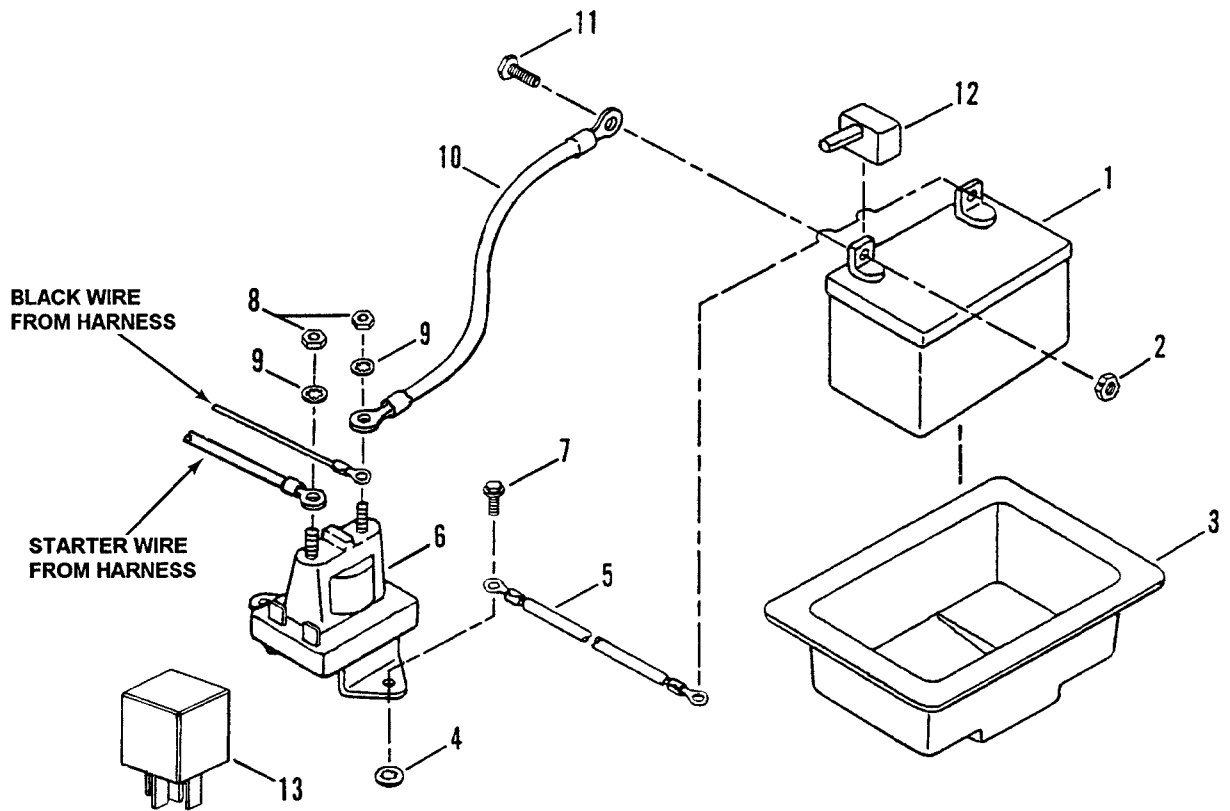


SCHEMATIC - WIRING DIAGRAM Part No. 2-8520
(MODELS: LT160H42DBV2 & LT180H48DBV2)

ILLUSTRATED DIAGRAM



ELECTRICAL COMPONENTS



ITEM	PART NO.	DESCRIPTION
1	6-0618	KIT, Battery (Includes Decal P.N. 1-6134 & Battery Without Acid)
2	9-0372	NUT, 1/4-20 Hex Center Lock, Grade 5 or B (2)
3	1-7853	TRAY, Battery
4	1-2485	RETAINER, Screw
5	2-6414	CABLE, Ground (Black)
6	7-5622	SOLENOID (Was 1-8604)
7	9-0539	SCREW, 1/4-20 x 1/2" Self-Tapping (2)
8	9-0977	NUT, 1/4-20 Hex Jam (2)
9	9-1314	WASHER, 1/4 Internal Tooth Lock (2)
10	1-4476	CABLE, Positive (Red)
11	2-7172	SCREW, 1/4-20 x 5/8" Hex Head Cap, Grade 5 (2)
12	1-2444	COVER, Positive Terminal
13	2-8570	RELAY

CLUTCH/BRAKE PEDAL LIFT LEVER

PARKING BRAKE LATCH

WARNING TO AVOID SERIOUS INJURY OR DEATH

BEFORE MOWING:

- READ OPERATOR'S MANUAL AND OTHER INSTRUCTIONS FURNISHED WITH THIS MACHINE AND ATTACHMENTS.
- KNOW LOCATION AND FUNCTION OF ALL CONTROLS. PRACTICE WITH BLADE OFF TO LEARN CONTROLS AND CHECK FOR PROPER OPERATION.
- MAKE SURE THAT SWITCHEL, BLADES, SWITCHES, AND OTHER SAFETY DEVICES ARE IN PROPER POSITION AND FUNCTIONAL.
- CLEAR MOWING AREA OF WYIC, ROCKS, AND OTHER OBJECTS THAT COULD CAUSE HAZARD IF THROWN BY BLADE.

PROTECT CHILDREN AND OTHER PEOPLE:

- DO NOT ALLOW CHILDREN (PRE-TEENAGERS) ON MACHINE OR IN YARD WHEN MOWING. KEEP OTHERS SAFELY AWAY FROM OPERATING AREA.
- TEENAGERS AND OTHER INEXPERIENCED OPERATORS SHOULD BE CAREFULLY INSTRUCTED AND CLOSELY SUPERVISED.
- LOOK BEHIND MACHINE BEFORE BACKING.
- NEVER CARRY CHILDREN, EVEN WITH BLADES OFF.

PREVENT TIP-OVER ACCIDENTS:

- DO NOT MOW ON SLOPES OR ANY AREA WHERE STABILITY OR TRACTION IS IN DOUBT. IF UNCERTAIN, DRIVE OVER AREA FIRST WITH BLADE OFF.
- AVOID SUDDEN TURNS.

DO NOT MOW ON SLOPES STEEPER THAN IS DESIGNED (ONE FOOT OF RISE IN FOUR FEET OF LENGTH). DO NOT MOW ACROSS FACE OF SLOPES. MOW UP AND DOWN.

REDUCE SPEED AND AVOID SHARP TURNS ON SLOPES.

AVOID UPHILL STARTS. IF MACHINE IS STOPPED DOWN UP SLOPE, TURN BLADE OFF AND BACK DOWN SLOPE.

KEEP A SAFE DISTANCE (AT LEAST THREE FEET) AWAY FROM EDGE OF DITCHES AND OTHER DROP-OFFS.

AVOID CONTACT WITH ROTATING BLADE:

- STOP BLADE BEFORE PUTTING FOOT ON GROUND OR LEAVING SEAT.
- BE SURE BLADE HAS STOPPED BEFORE ATTEMPTING TO UNLOAD DISCHARGE OR BEFORE PLACING HANDS OR FEET NEAR BOTTOM OF BLADE HOUSING.
- NEVER START BLADE UNLESS PROPERLY SEATED ON MACHINE.
- STOP BLADE, STOP ENGINE, AND REMOVE KEY WHEN LEAVING MACHINE.

TO STOP MACHINE:
DEPRESS CLUTCH/BRAKE PEDAL.

TO SET PARKING BRAKE:
DEPRESS CLUTCH/BRAKE PEDAL, RAISE PARKING LATCH AND HOLD WHILE RELEASING PEDAL.

TO ROLL MACHINE:
MOVE AND RELEASE LEVER, LOCATED UNDER HANDLE BY REAR OF SEAT, TO THE RIGHT AND LOCK INTO PLACE.

TO START ENGINE:
CLUTCH/BRAKE PEDAL MUST BE FULLY DEPRESSED OR PARK BRAKE POSITION AND PTO SWITCH MUST BE IN OFF POSITION.

TO START DRIVING:
RELEASE PARKING BRAKE, SLOWLY MOVE SPEED SELECTOR FORWARD FOR FORWARD TRAVEL.

AVOID UPHILL STARTS. IF MACHINE IS STOPPED GOING UP SLOPE, TURN BLADE OFF AND BACK SLOWLY DOWN SLOPE. IF UPHILL STARTS MUST BE MADE, SET THROTTLE AT HALF SPEED. THE SPEED SELECTOR MUST BE IN NEUTRAL.

TO CHANGE DRIVING SPEEDS:
PUSH SPEED SELECTOR WITHOUT USING PEDAL.

TO SET CUTTING HEIGHT:
DEPRESS THUMB BUTTON ON LIFT LEVER, MOVE FORWARD TO LOWER, PULL BACK TO RAISE, RELEASE BUTTON.

TO START BLADES:
FULL PTO SWITCH OUT.

TO STOP BLADES:
PUSH PTO SWITCH IN.

TO MOW PROPERLY:
INCREASE ENGINE SPEED AND/OR DECREASE DRIVING SPEED UNTIL CUT IS SMOOTH AND ENGINE IS NOT UNDER HEAVY STRAIN.

CAUTION

- ROTATING BLADES.
- KEEP HANDS AND FEET FROM UNDER MOWER.
- DEFLECTOR MUST BE FASTENED DOWN OR GRASS CATCHER INSTALLED BEFORE OPERATING MOWER.

14452

WARNING

GUARD OR ENTIRE GRASS CATCHER MUST BE INSTALLED BEFORE OPERATING MOWER

46720

CAUTION

ROTATING BLADES. KEEP HANDS AND FEET FROM UNDER MOWER.

6973

CAUTION

IF BATTERY IS REMOVED, DO NOT OPERATE ENGINE WITHOUT INSULATING POS+ BATTERY CABLE TERMINAL WITH ELECTRICAL TAPE, OR SPARKING FROM BATTERY CABLES CAN RESULT.

DANGER

KEEP HANDS and FEET AWAY



CAUTION

INSTALL BATTERY WITH TERMINALS FORWARD

26415

ITEM	PART NO.	DESCRIPTION	LOCATION
1	2-6415	DECAL, Caution (Battery Location)	Page 9, item 13
2	1-6973	DECAL, Caution (Rotating Blades)	Page 21, item 44
3	2-6831	DECAL, Danger (Cut Finger)	Page 21, item 3
--	1-3010	DECAL, Danger, CPSC	Page 25, item 2
4	1-6134	TAG, Caution	Page 40, item 1
5	1-4852	DECAL, Caution (Rotating Blades)	Page 21, item 49
6	2-8586	DECAL, Instruction (42" Deck)	Page 19, item 31
--	4-6557	DECAL, Instruction (48" Deck)	Page 19, item 31 (Not Shown)
7	1-6576	DECAL, Shift Cover	Page 9, item 20
8	4-6720	DECAL, Chute/Deflector	Page 25, item 16



Parts Manual for

SNAPPER[®]

**LAWN TRACTORS
ELECTRIC CLUTCH
HYDRO DRIVE
SERIES D**

SNAPPER[®] McDonough, GA., 30253 U.S.A.