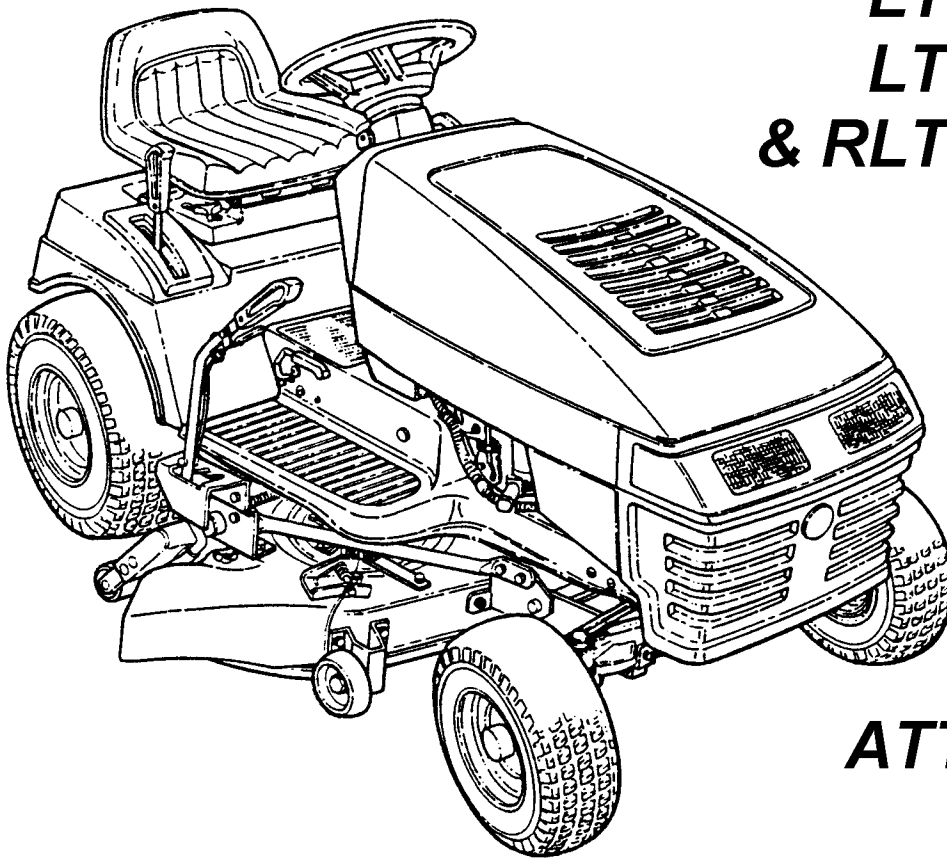


Parts Manual for

SNAPPER®

MODELS LT125G38AKV,
LT130G38AKV,
LT140G38ABV,
LT140G42ABV,
LT140G42AKV,
LT150G42AKV,
& RLT125G38AKV

SERIES "A"
LAWN



TRACTORS
& MOWER
ATTACHMENTS

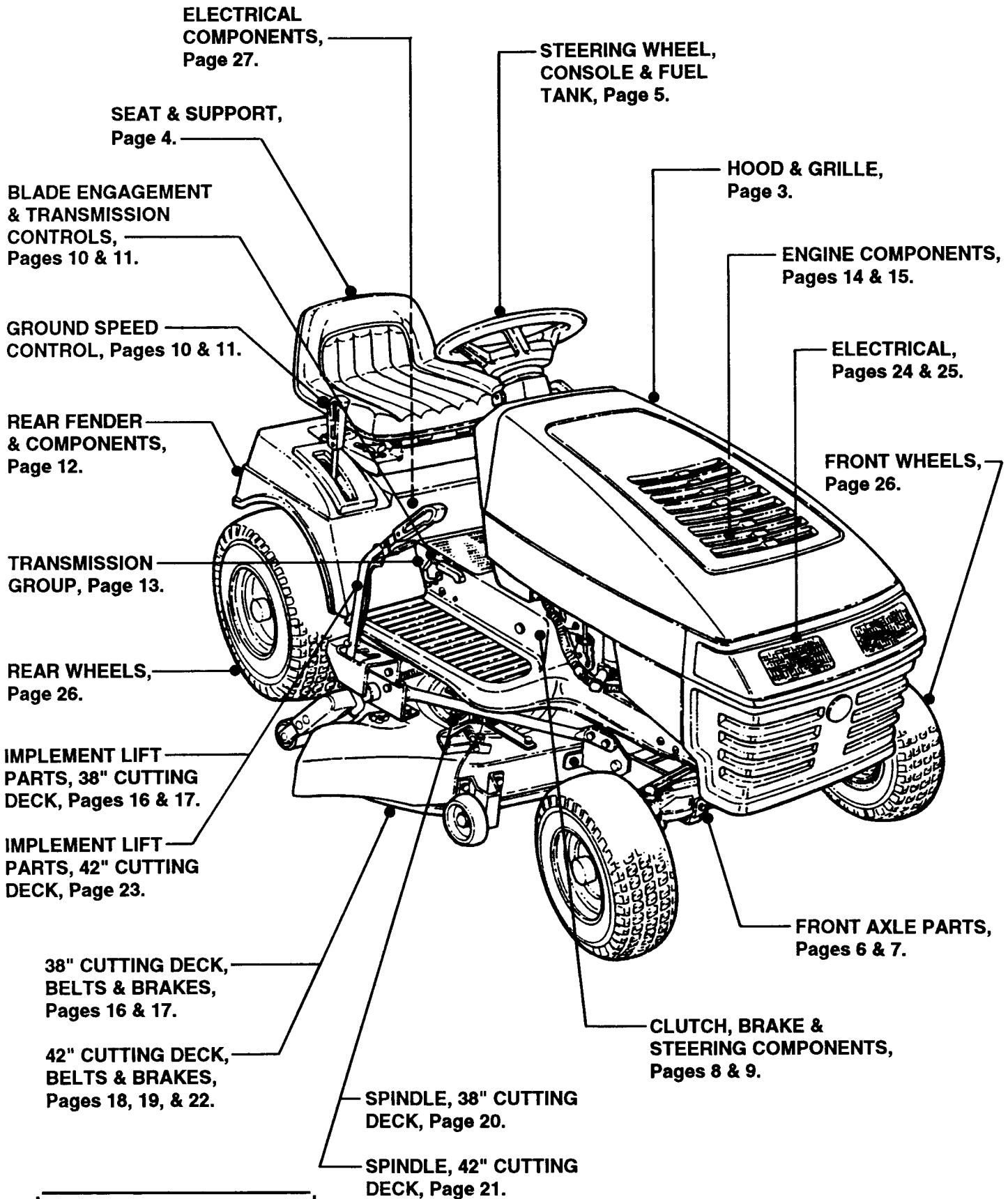
IT IS THE POLICY OF SNAPPER TO IMPROVE ITS PRODUCTS WHENEVER IT IS POSSIBLE AND PRACTICAL TO DO SO. WE RESERVE THE RIGHT TO MAKE CHANGES OR ADD IMPROVEMENTS AT ANY TIME WITHOUT INCURRING ANY OBLIGATION TO MAKE SUCH CHANGES ON PRODUCTS MANUFACTURED PREVIOUSLY.

SNAPPER® McDonough, GA., 30253 U.S.A.

(Rev. 3, 6/5/03)

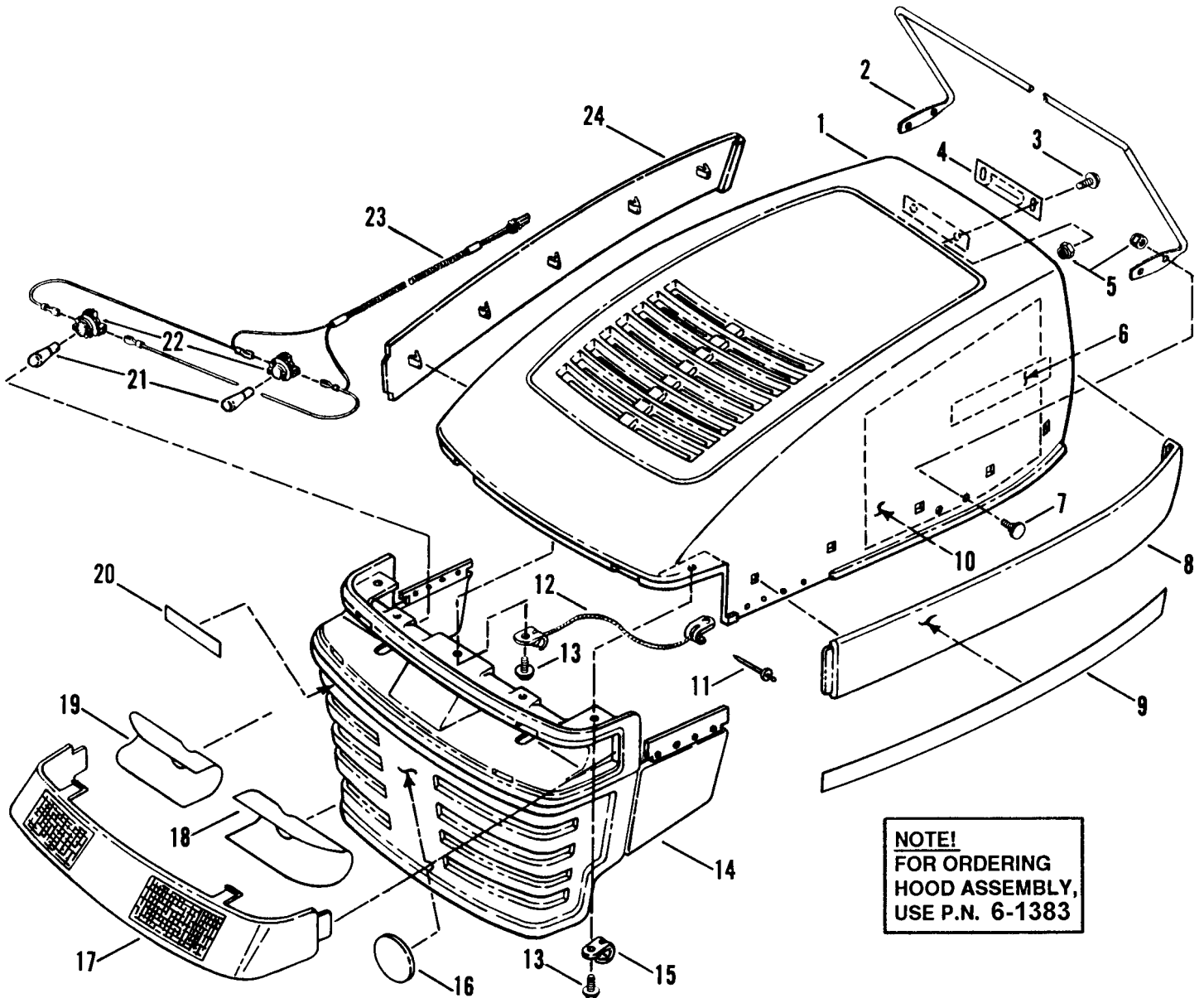
MANUAL No. 06431

FAMILIARIZATION



NOTE! 38" GROUND FOLLOWING DECK SHOWN

HOOD, GRILLE & COMPONENTS

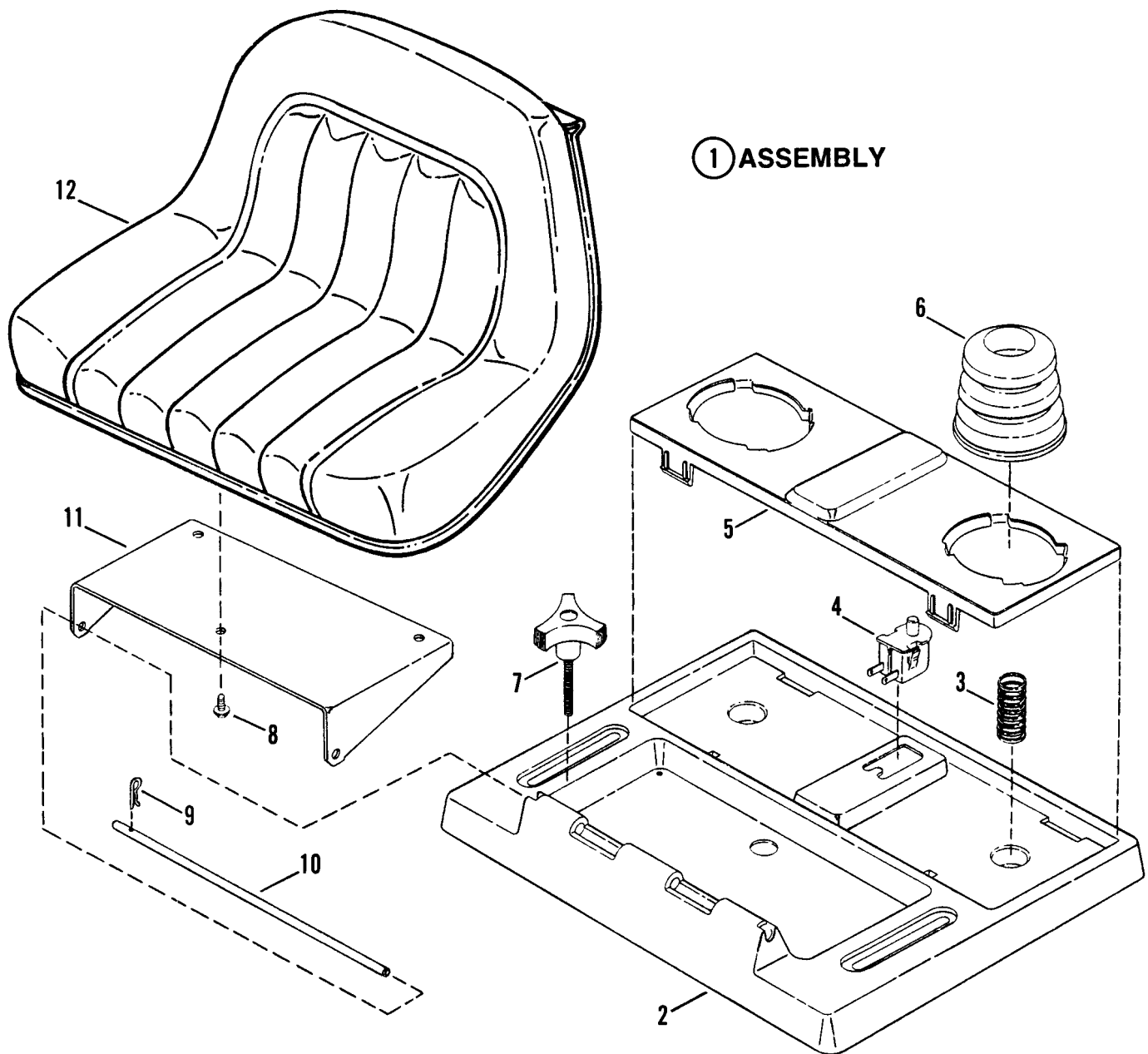


NOTE!
FOR ORDERING
HOOD ASSEMBLY,
USE P.N. 6-1383

ITEM	PART NO.	DESCRIPTION
1	2-4471	HOOD
2	1-6766	ROD, Hood Support
3	9-0999	SCREW, 1/4-20 x 5/8" Truss Head (4)
4	2-4718	LATCH, Spring
5	7-6978	NUT, 1/4-20 Hex Nyloc (6)
6	2-4984	LOGO - SNAPPER (Chrome) (2)
7	9-0803	BOLT, 1/4-20 x 5/8" Flat Head Carriage (4)
8	2-4474	PANEL, Hood (Left Side)
9	2-4957	DECAL, Hood (Model LT125G38AKV) (R.H.) (LX140G)
-	2-4958	DECAL, Hood (Model LT125G38AKV) (L.H.) (LX140G)
-	2-4959	DECAL, Hood (Models LT140G38ABV & LT140G42AKV) (R.H.) (LX150G)
-	2-4960	DECAL, Hood (Models LT140G38ABV & LT140G42AKV) (L.H.) (LX150G)
-	2-4961	DECAL, Hood (Model RLT125G38AKV) (R.H.) (RX140G)
-	2-4962	DECAL, Hood (Model RLT125G38AKV) (L.H.) (RX140G)
-	2-7805	DECAL, Hood (Model LT150G42AKV)(R.H.)
-	2-7806	DECAL, Hood (Model LT150G42AKV)(L.H.)

ITEM	PART NO.	DESCRIPTION
10	2-6734	HEAT SHIELD, Hood (Kohler Engines) (L. H. Only)
11	9-1095	RIVET, 1/8" Pop (8)
12	2-6114	LANYARD, Hood (Brigg's & Straton Engines)
-	2-6192	LANYARD, Hood (Kohler Eng's.)
13	9-1106	SCREW, M4.8 x 1.59 x 16.00MM, Special (5)
14	2-4472	GRILLE, Hood
15	2-6482	CLIP, "J"
16	2-6366	DECAL, Convertible
-	2-4988	DECAL, Recycling, Ninja Blade (Model RLT125G38AKV Only) ('93 Model Year & Earlier)
17	2-4475	LENS
18	2-6180	DECAL, Reflect (L.H.)
19	2-6179	DECAL, Reflect (R.H.)
20	2-4983	LOGO - SNAPPER, 4" (Chrome)
21	2-6172	BULB, Headlights (2)
22	2-4709	SOCKET, Headlight Bulb (2)
23	2-6171	HARNNESS, Headlight Wiring
24	2-4473	PANEL, Hood (R.H.)

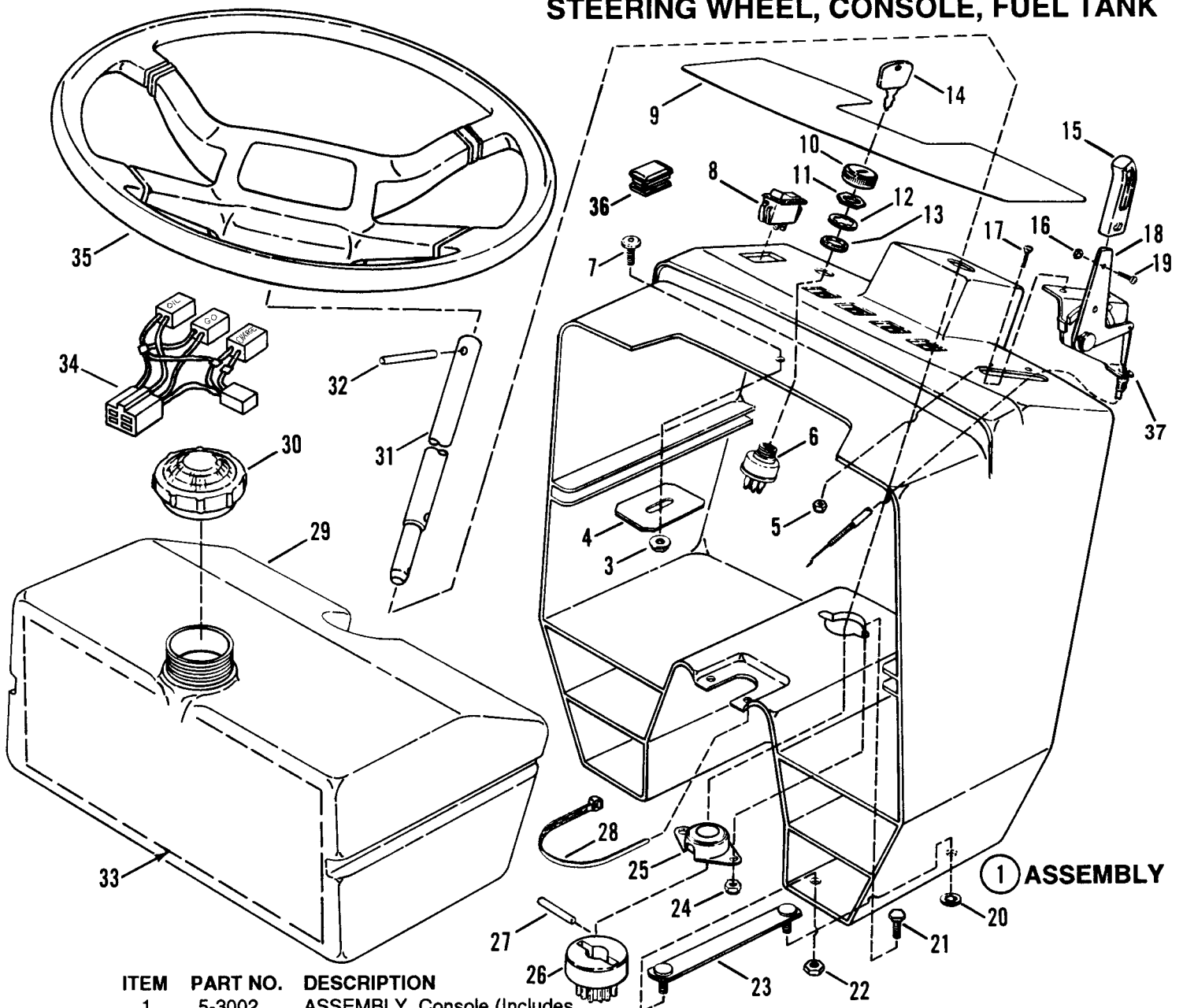
SEAT, SUPPORT COMPONENTS



① ASSEMBLY

ITEM	PART NO.	DESCRIPTION
1	5-2606	ASSEMBLY, Seat Support (Includes items 2, 4, 5, & 2 item 3)
2	1-7852	SUPPORT, Seat
3	2-2759	SPRING (2)
4	2-3354	SWITCH, Seat (NC)
5	1-7851	HOLDER, Cushion
6	1-9109	CUSHION, Seat (2)
7	1-7875	KNOB, Seat Adjustment (2)
8	9-0721	BOLT, 5/16-18 x 1/2" Hex Flange Lock (3)
9	1-2431	PIN, Hair
10	3-3435	ROD, Seat Hinge
11	3-3318	BRACKET, Seat Support
12	2-4826	SEAT, Operator's

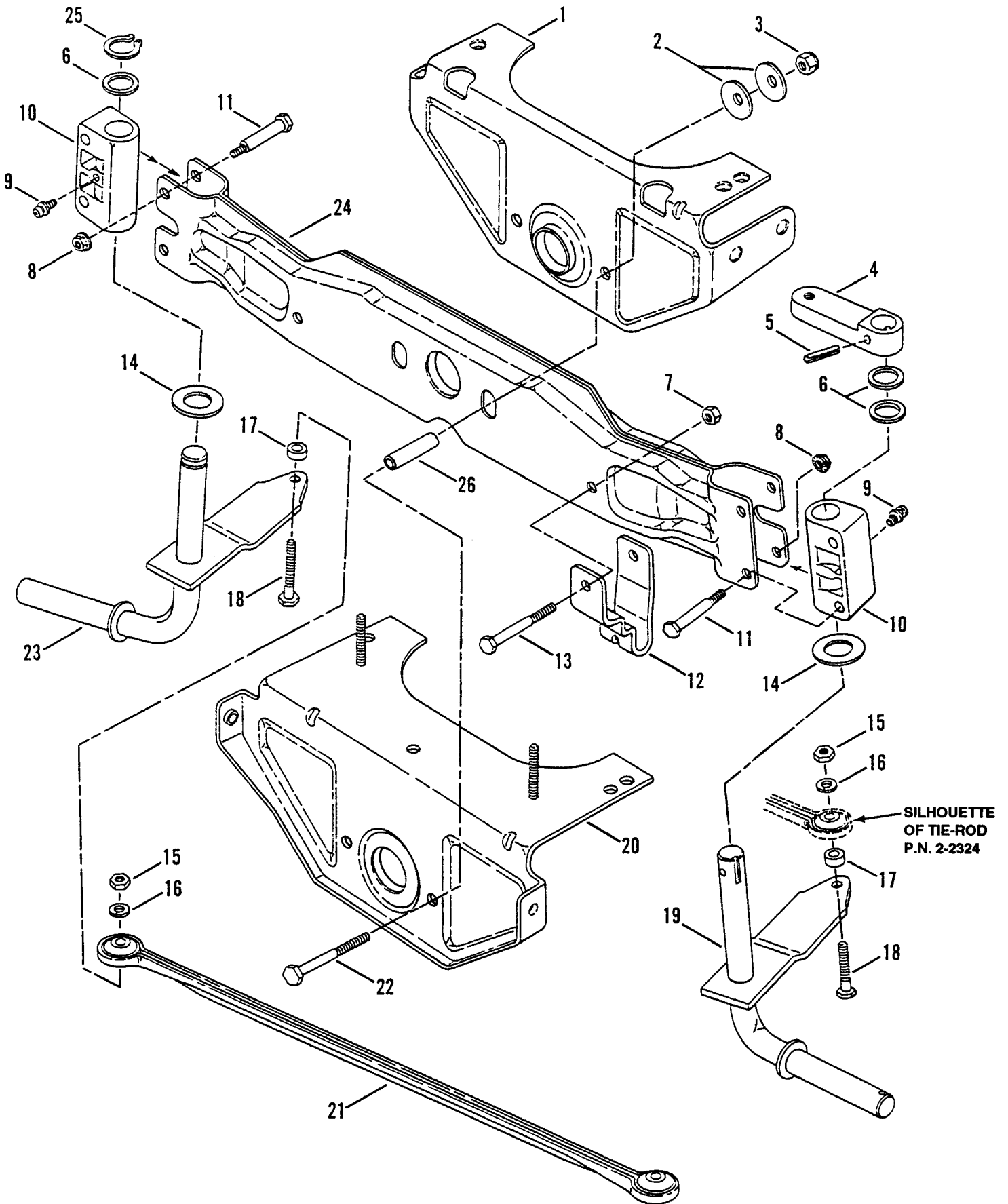
STEERING WHEEL, CONSOLE, FUEL TANK



ITEM	PART NO.	DESCRIPTION
1	5-3002	ASSEMBLY, Console (Includes items 2, 20, 21, 23, 24, & 25)
2	2-5012	CONSOLE
3	9-0951	NUT, 5/16-18 Hex Flange Lock
4	3-3883	BRACKET, Hood Latch Catch
5	7-6977	NUT, #10-24 Hex Nyloc (2)
6	1-8562	KEYSWITCH
-	2-6343	KEYSWITCH (B. & S. Engines Only)
7	9-1001	SCREW, 5/16-18 x 5/8" Torx, Truss Hd.
8	2-3187	SWITCH, Headlights
9	2-4907	DECAL, Console (Kohler Engines)
-	2-4906	DECAL, Console (B. & S. Engines)
-	2-4907	DECAL, Console (Mdl. LT150G42AKV)
10	2-3506	BEZEL
11	1-2685	NUT, 5/8-32 Hex
12	9-0880	WASHER, 5/8 Internal Tooth Lock
13	1-6132	SPACER
14	2-6609	KEY (With Cover)
15	2-3655	HANDLE, Throttle Control
16	9-1018	NUT, #8-32 Hex
17	9-1188	SCREW, #10-24 x 5/8" Machine (2)
18	2-4642	CONTROL, Throttle (B. & S. Eng's.)
-	2-4807	CONTROL, Throttle (Kohler Eng's.)

ITEM	PART NO.	DESCRIPTION
19	9-1017	SCREW, #8-32 x 3/8" Cross-Recessed, Fillester Head
20	1-1791	RETAINER (4)
21	9-0073	SCREW, 1/4-20 x 3/4" H.H.C. (2)
22	9-0184	NUT, 5/16-18 Hex Center Lock (4)
23	5-2891	ASSEMBLY, Strap-Clinch Stud (2)
24	7-6978	NUT, 1/4-20 Hex Nyloc (2)
25	2-6196	ASSEMBLY, Flange Bearing
26	2-2368	GEAR, Pinion, Steering Shaft
27	2-2369	PIN, Dowel, 1/4 x 1 1/4"
28	2-4641	TIE, Wire
29	5-2907	ASSM'Y., Fuel Tank (Incls. item 30)
30	1-4363	CAP, Fuel Tank
31	2-2380	SHAFT, Steering
32	1-2765	ROLL-PIN
33	2-6735	HEAT SHIELD (Kohler Eng's. Only)
34	2-5008	HARNESS, Wiring, Indicator Lights
35	2-6448	STEERING WHEEL
36	2-5007	LENS, Indicator Lights (Kohler Engines Only) (3)
37	2-4807	CONTROL, Throttle

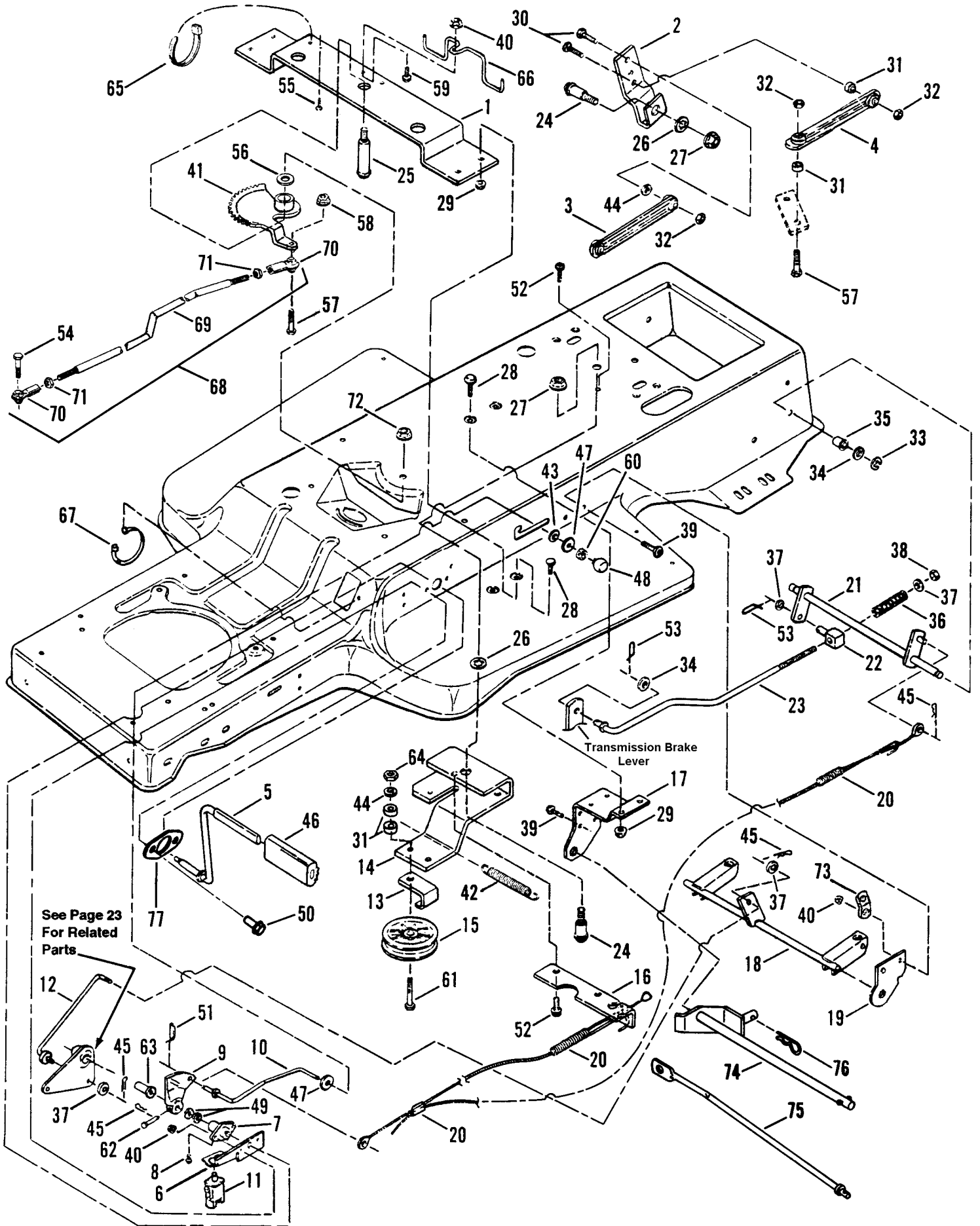
FRONT AXLE PARTS



FRONT AXLE PARTS

ITEM	PART NO.	DESCRIPTION
1	3-3374	BRACKET, Axle (Rear)
2	1-2063	WASHER, Cone (4)
3	7-6979	NUT, 3/8-16 Nyloc (2)
4	1-9034	ARM, Steering
5	9-0842	ROLL-PIN, 1/4 x 1 1/4"
6	1-0935	WASHER, Shim (3)
7	9-0184	NUT, 5/16-18 Hex Center Lock
8	9-0477	NUT, 1/4-20 Hex Flange Top-Lock (2)
9	1-3864	FITTING, Lube (2)
10	1-9467	BEARING, Spindle (2)
11	2-2758	BOLT, 1/4-20 x 1 41/64" Shoulder (4)
12	3-3383	BRACKET, Deck Hanger (2)
13	9-1046	SCREW, 5/16-18 x 2 1/2" Hex Head Cap (2)
14	3-1036	WASHER, Thrust (2)
15	9-0130	NUT, 3/8-16 Hex (2)
16	9-0118	WASHER, 3/8 Split Lock (2)
17	2-4180	SPACER, Tie-Rod (2)
18	9-0655	SCREW, 3/8-16 x 1 1/2" Hex Head Cap, Grade 5 (2)
19	4-1351	SPINDLE ASSEMBLY, Left Hand
20	5-2490	BRACKET ASSEMBLY, Axle (Front) ('93 Model Year & Earlier)
-	5-2897	BRACKET ASSEMBLY, Axle (Front) ('94 Model Year)
21	2-2324	TIE-ROD (19.125")
22	9-0590	BOLT, 3/8-16 x 3" Hex Head (2)
23	4-1350	SPINDLE ASSEMBLY, Right Hand
24	4-0986	AXLE, Front
25	1-0746	RING, Retaining
26	2-6595	SPACER (2)

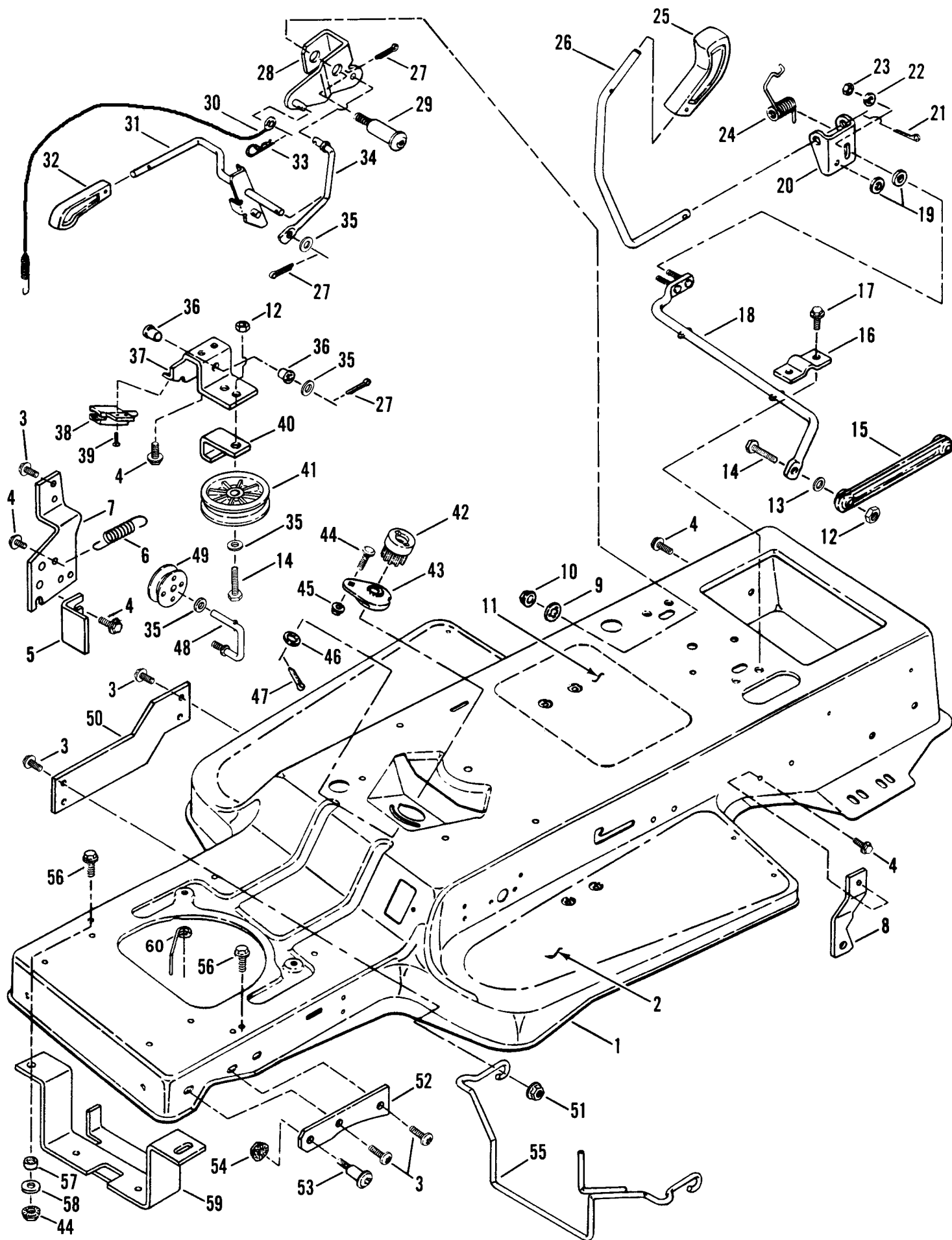
CLUTCH, BRAKE & STEERING COMPONENTS



CLUTCH, BRAKE & STEERING COMPONENTS

ITEM	PART NO.	DESCRIPTION	ITEM	PART NO.	DESCRIPTION
1	3-3627	BRACE, Sector Gear	43	1-1791	RETAINER, 5/16 Bolt
2	3-3555	BELLCRANK, Shift Lever	44	9-0118	WASHER, 3/8 Split Lock (4)
3	2-4286	LINK, Shift Lever	45	1-5067	HAIRPIN, 3/32 x 1 1/2" (4)
4	2-5041	LINK, Shift Lever (Twisted)	46	1-2661	PAD, Pedal
5	2-2743	PEDAL, Park Brake	47	2-3649	WASHER, 5/16 Nylon (2)
6	3-3993	BRACKET, Brake Switch	48	2-3188	KNOB, Push/Pull
7	5-2431	ASSEMBLY, Foot Shaft Pivot (Includes item 8)	49	1-5992	WASHER, 5/8 Flat
8	1-4871	FITTING, Lube	50	9-1000	SCREW, 5/16-18 x 7/8" Truss Head (Torx) (2)
9	5-3240	ASSEMBLY, Clutch/Brake Arm	51	2-4159	COTTER-PIN, 3/64 x 1 7/32" (Self-Locking)
10	2-4057	LATCH, Park Brake	52	9-0361	SCREW, 5/16-18 x 5/8" Self- Tapping (3)
11	2-2886	SWITCH	53	2-4874	COTTER-PIN, 1/16 x 1 27/64" (Self-Locking)
12	2-2964	ROD, Lift Link (42" Model Only)	54	9-0163	SCREW, 3/8-24 x 1 1/4" Hex Head Cap
13	3-3556	GUIDE, Pulley	55	9-0913	SCREW, #10-24 x 1/2" Self- Tapping (Torx)
14	3-3557	ARM, Idler (Traction Drive)	56	3-1036	WASHER, 3/4 Thrust
15	2-3954	PULLEY	57	9-0655	SCREW, 3/8-16 x 1 1/2" Hex Head Cap
16	3-3595	EXTENSION, Idler Arm	58	9-0613	NUT, 3/8-16 Hex Flange Lock
17	3-3521	BRACKET, Rear Lift/PTO Lever	59	9-0595	BOLT, 5/16-18 x 3/4" Hex Flange Lock
18	4-1369	WELDMENT, Rear Lift (42" Model)	60	2-3189	RING, Tolerance
19	3-3520	BRACKET, Deck Hang Pivot	61	9-0629	SCREW, 3/8-16 x 2 1/4" Hex Head Cap
20	2-4115	ASSEMBLY, Clutch Brake Cable	62	2-3645	PIN, 3/16 x 1 1/2" Clevis
21	4-1347	WELDMENT, Brake Pivot	63	2-2742	BEARING, Flange
22	2-4586	SWIVEL, Brake Link	64	9-0130	NUT, 3/8-16 Hex
23	2-4832	ROD, Brake	65	1-2080	TIE, Cable
24	2-2381	BOLT, 1/2-13 x 2" Shoulder (2)	66	2-6459	GUIDE, Drive Belt
25	2-4604	BOLT, 1/2-13 x 3 7/8" Shoulder	67	1-4451	TIE, Wire
26	9-0509	WASHER, 1/2 Internal Tooth Lock	68	5-2728	ASSEMBLY, Drag Link (Includes items 69, 70, & 71)
27	9-0619	NUT, 1/2-13 Hex Flange Lock (2)	69	2-2846	LINK, Drag
28	9-0803	BOLT, 1/4-20 x 5/8" Carriage (6)	70	2-3200	ROD-END (2)
29	9-0583	NUT, 1/4-20 Hex Flange Lock (6)	71	9-0482	NUT, 3/8-24 Hex Jam (2)
30	9-0143	SCREW, 3/8-16 x 1 1/4" Hex Head Cap (2)	72	9-0975	NUT, 1/2-13 Hex Center Lock
31	2-4180	SPACER (3)	73	3-3762	CLIP, Spring
32	9-0546	NUT, 3/8-16 Hex Center Lock (2)	74	5-3230	ASSEMBLY, Stabilizer Shaft (38" Model Only)
33	1-4341	RING, 1/2" External Retaining (2)	75	2-6764	BAR, Stabilizing (38" Model Only)
34	9-0250	WASHER, 1/2 Flat	76	1-6231	HAIRPIN, 5/64 x 1 3/16"
35	1-1016	BEARING, Nylon (2)	77	4-6778	WASHER, Pivot- Stiffener
36	2-4381	SPRING, Brake			
37	9-0122	WASHER, 3/8 Flat			
38	7-6979	NUT, 3/8-16 Hex Nyloc			
39	9-1001	SCREW, 5/16-18 x 5/8" Truss Head (Torx) (5)			
40	9-0585	NUT, 5/16-18 Hex Flange Lock (3)			
41	5-2809	ASSEMBLY, Sector Gear			
42	2-4871	SPRING, Idler			

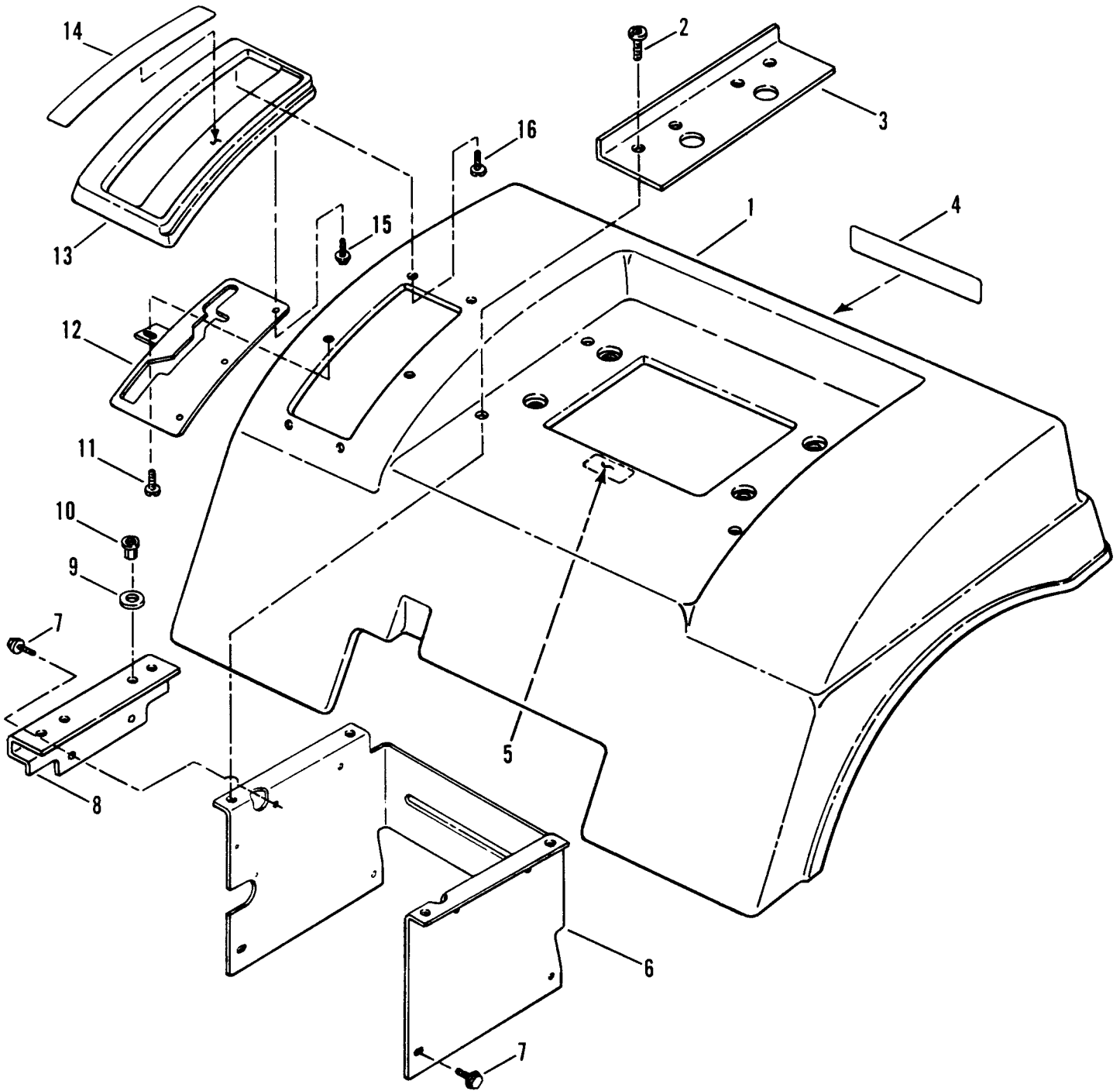
BLADE ENGAGEMENT & TRANSMISSION CONTROLS



BLADE ENGAGEMENT & TRANSMISSION CONTROLS

ITEM	PART NO.	DESCRIPTION	ITEM	PART NO.	DESCRIPTION
1	3-3301	FRAME, Tractor	35	9-0122	WASHER, 3/8 Flat (3)
2	2-4456	FOOTPAD, Deluxe (2)	36	1-3321	BUSHING (2)
3	9-1001	SCREW, 5/16-18 x 5/8" Truss Head (Torx) (9)	37	3-3525	SUPPORT, PTO Lever
4	9-0361	SCREW, 5/16-18 x 5/8" Hex Washer Head (4)	38	2-3355	SWITCH, Blade Engagement
5	3-3819	GUIDE, Cable	39	9-0913	SCREW, #10-24 x 1/2" Self-Tapping
6	2-2437	SPRING, Brake Return	40	3-3556	GUIDE, Belt
7	3-3810	BRACKET, Axle/Spool	41	2-4344	PULLEY
8	3-3951	BRACKET, Torque	42	2-2368	GEAR, Steering Pinion
9	9-0509	WASHER, 1/2 Internal Tooth Lock	43	5-2562	ASSEMBLY, Steering Adjuster
10	9-0619	NUT, 1/2-13 Hex Flange Lock	44	9-0551	BOLT, 1/4-20 x 5/8" Short Neck Carriage
11	2-6566	DECAL, Instruction/SAFETY	45	9-0583	NUT, 1/4-20 Hex Flange Lock
12	9-0546	NUT, 3/8-16 Hex Center Lock	46	1-4296	WASHER, 1/2 Shim
13	2-4180	SPACER	47	9-0365	COTTER-PIN, 1/8 x 3/4"
14	9-0655	SCREW, 3/8-16 x 1 1/2" Hex Head Cap (2)	48	2-4182	ROD, Spool Pivot
15	2-4286	LINK, Shift Lever	49	2-3182	SPOOL
16	3-3554	CLIP, Shift Lever (2)	50	3-3832	BRACE, Frame (2)
17	9-1151	SCREW, 5/16-18 x 1 1/4" Self-Tapping (4)	51	9-0585	NUT, 5/16-18 Hex Flange Lock (2)
18	5-2920	ASSEMBLY, Shift Lever (Lower)	52	3-3488	BRACKET, Hood Pivot (2)
19	9-0189	WASHER, 5/16" Internal Tooth Lock (2)	53	2-4061	BOLT, 3/8-16 x 1 1/4" Shoulder (2)
20	3-3541	BRACKET, Shift Lever (Upper)	54	9-0613	NUT, 3/8-16 Hex Flange Lock (2)
21	9-0364	COTTER-PIN, 5/32 x 1"	55	4-1531	GUIDE, Belt (42" Model) ('93 Model Year & Earlier)
22	9-0055	WASHER, 1/4 Flat	-	4-1545	GUIDE, Belt (38" Model) ('93 Model Year & Earlier) (Some 42" models)
23	7-6978	NUT, 14-20 Hex Nyloc	-	2-7741	GUIDE, Belt (42" Model) ('94 Model Yr.)
24	2-4069	SPRING, Shift Lever	-	4-1556	GUIDE, Belt (38" Model) ('94 Model Yr.)
25	2-3656	KNOB, Deck Lift Lever	56	9-1151	BOLT, 5/16-18 x 1 1/4" Hex Washer Head (42" Model) (2)
26	2-6128	LEVER, Shift	57	2-4180	SPACER (42" Model) (2)
27	9-0037	COTTER-PIN, 3/32 x 3/4" (3)	58	3-2070	WASHER, 13/32 x 3/4" Flat (42" Model) (2)
28	4-1310	WELDMENT, PTO Bellcrank	59	4-1523	WELDMENT, Belt Guide (42" Model)
29	2-4518	BOLT, 1/2-13 x 2 11/32" Shoulder	60	2-4101	GUIDE, Belt
30	2-6777	CABLE, Blade (38" Model)			
-	2-4765	CABLE, Blade (42" Model)			
31	4-1307	WELDMENT, PTO Lever			
32	2-3657	KNOB, PTO Lever			
33	1-5067	PIN, Hair, 3/32 x 1 1/2"			
34	2-3931	ROD, PTO Link			

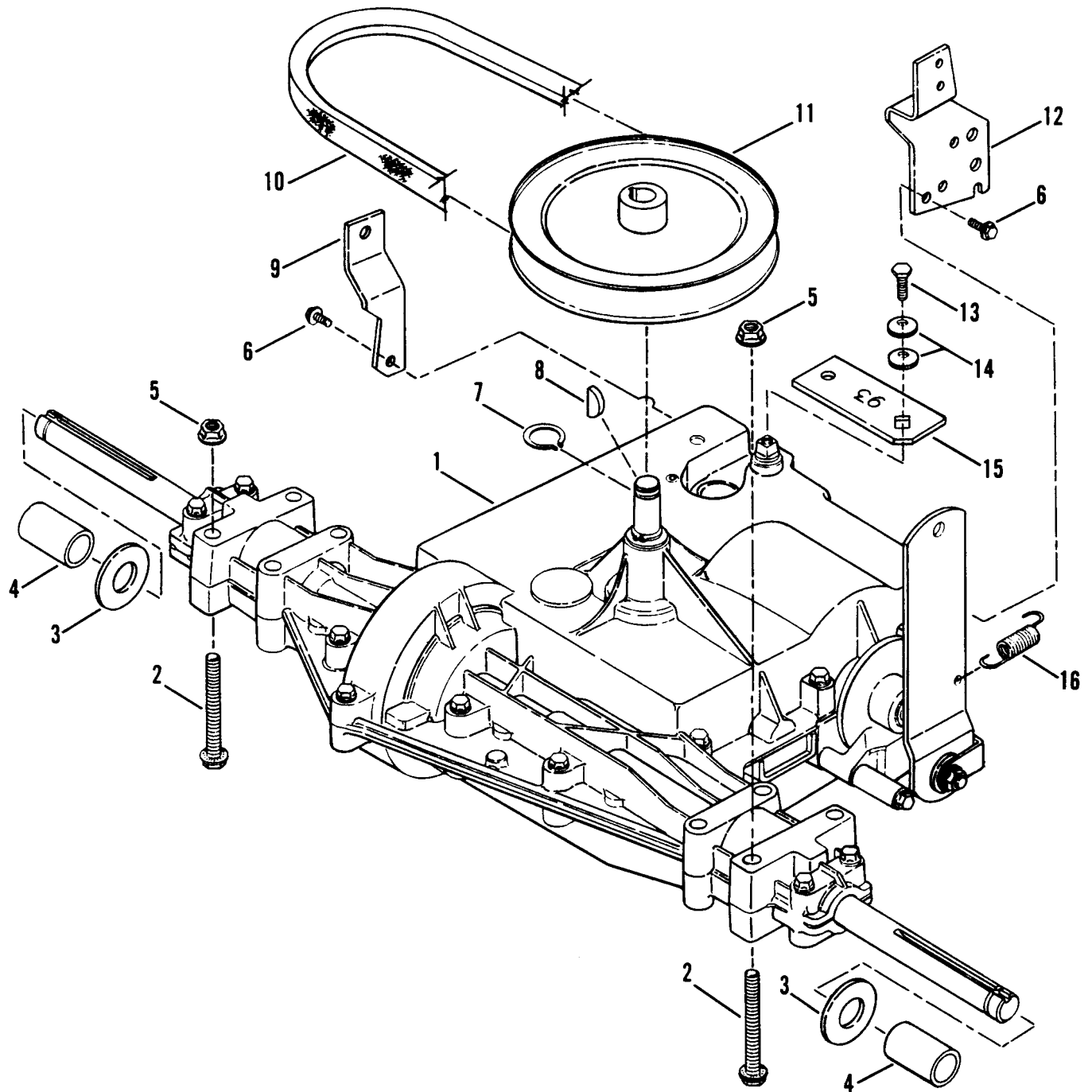
REAR FENDER & COMPONENTS



ITEM	PART NO.	DESCRIPTION
1	2-4887	PAN, Seat (Fender)
2	9-1001	SCREW, 5/16-18 x 5/8" Truss Head (Torx) (4)
3	3-3958	BRACE, Fender (2)
4	2-4984	DECAL - SNAPPER, Molded Logo (Chrome)
5	2-6415	DECAL - CAUTION, Battery Installation
6	3-3312	SUPPORT, Fender
7	9-0361	SCREW, 5/16-18 x 5/8" Hex Washer Head, Self-Tapping (8)
8	3-3843	BRACKET, Fender Support (2)

ITEM	PART NO.	DESCRIPTION
9	2-6187	WASHER, Flat (2)
10	2-6183	RIV-NUT, 5/16-18 (2)
11	9-1195	SCREW, #10-16 x 3/4" Pan Head, Self-Tapping
12	4-1491	DETENT, Gear Shift
13	2-6125	COVER, Shift
14	2-6129	DECAL, Shift Cover, 6-Speed
15	9-1105	SCREW, #10-16 x 1/2" Hex Washer Head, Self-Tapping (3)
16	9-1223	SCREW, #10-16 x 5/8" Pan Head, Self-Tapping (5)

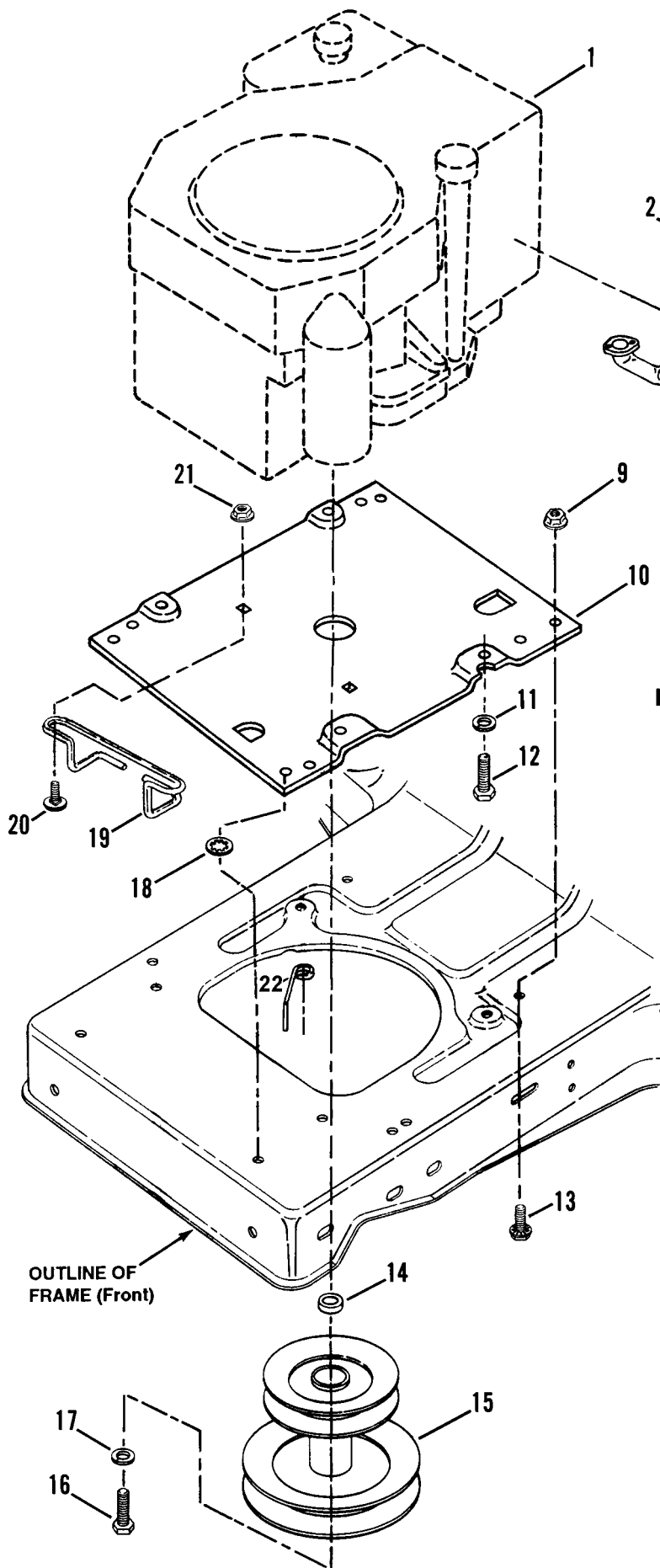
TRANSMISSION GROUP



ITEM	PART NO.	DESCRIPTION
1	2-4830	TRANSAXLE, Peerless Model 930, 6-Speed
2	9-0702	BOLT, 5/16-18 x 2 1/4" Hex Flange Lock (4)
3	3-1036	WASHER, Flat (2)
4	2-4857	SPACER (2)
5	9-0585	NUT, 5/16-18 Hex Flange Lock (4)
6	9-0361	SCREW, 5/16-18 x 5/8" Hex Washer Head, Self-Tapping (2)
7	1-2763	RING, Retaining

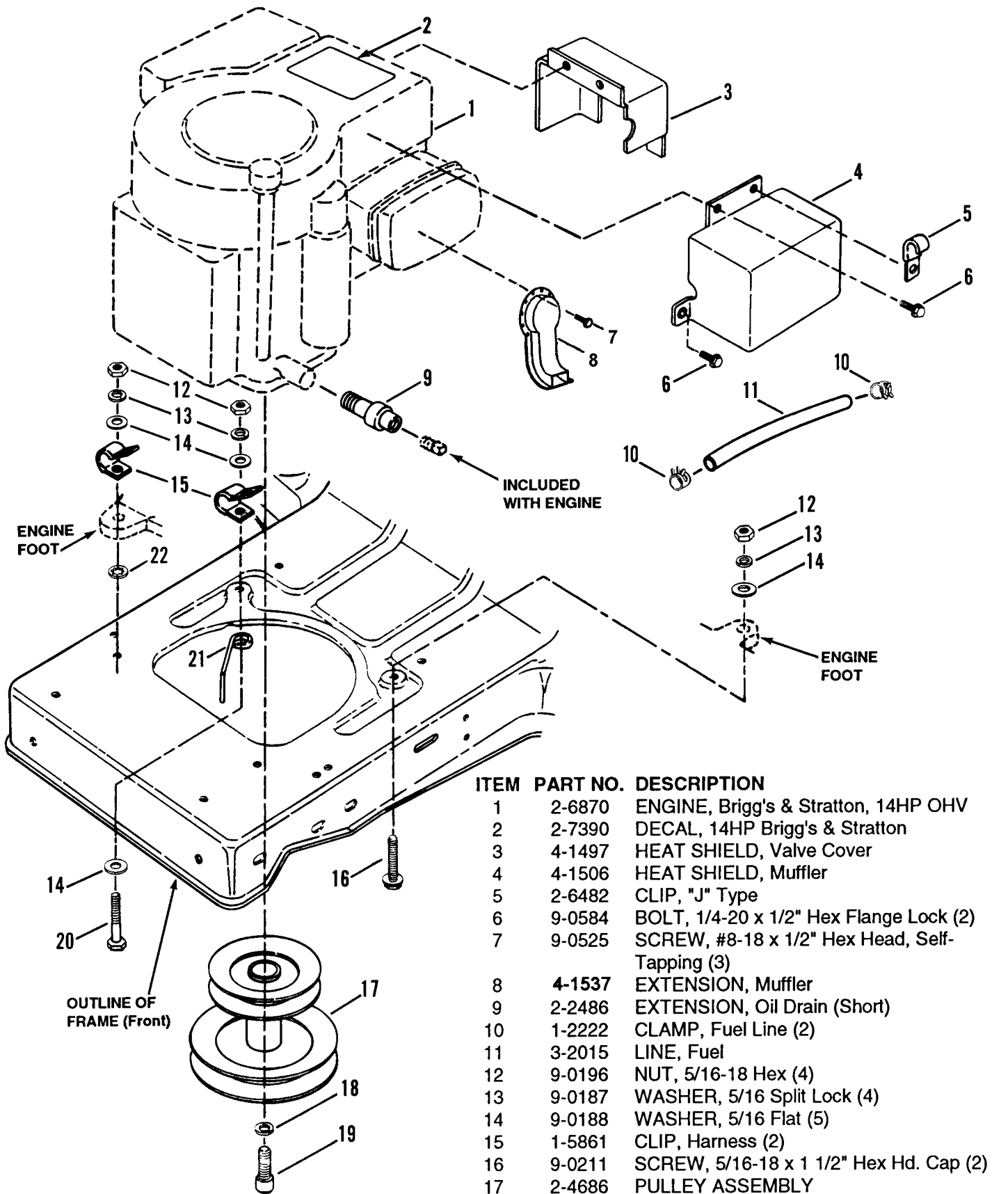
ITEM	PART NO.	DESCRIPTION
8	1-0211	KEY, Woodruff, 3/16 x 3/4", No. 9
9	3-3951	BRACKET, Torque
10	2-5042	BELT, P930, Traction Drive (HA 97.75)
11	2-4831	PULLEY, Drive
12	3-3810	BRACKET, Axle/Spool
13	9-1165	BOLT, 1/4-28 x 5/8" Hex Head
14	9-0746	WASHER, Bellville (2)
15	3-3754	ARM, Shift Link Lever
16	2-2437	SPRING, Brake Return

ENGINE COMPONENTS (Kohler Engines)



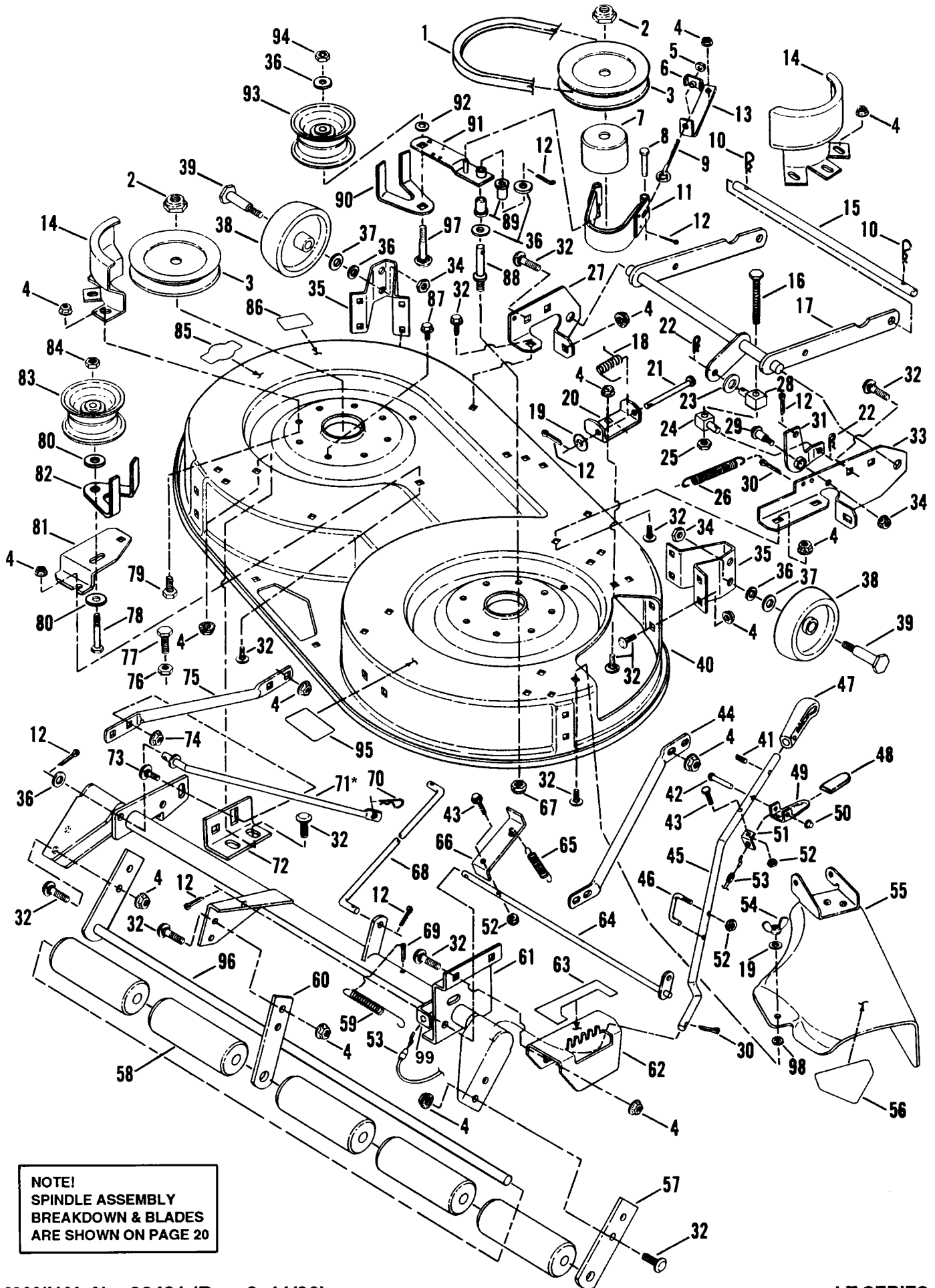
ITEM	PART NO.	DESCRIPTION
1	2-4919	ENGINE, 12.5HP (1993 Model Year & Earlier)
-	2-4920	ENGINE, 14.0HP OHV (1993 & 1994 Model Year)
-	2-7807	ENGINE, 15.0 HP OHV (1994 Model Year)
2	1-7313	MUFFLER
3	2-6746	TRIM, Heat Shield
4	3-3955	HEAT SHIELD, Valve Cover
5	9-0548	SCREW, 1/4-20 x 1" Hex Head Cap, Grade 5 (2)
6	2-6799	PLUG, Heat Shield
7	1-2222	CLAMP, Fuel Line (2)
8	7-6532	LINE, Fuel
9	9-0585	NUT, 5/16-18 Hex Flange Lock (4)
10	3-3702	SUB-PLATE, Kohler Engines
11	9-0187	WASHER, 5/16 Split Lock (4)
12	7-7692	BOLT, M8 -1.25 x 25MM, Grade 5 (4)
13	9-0661	BOLT, 5/16-18 x 1" Hex Flange Lock (4)
14	2-4802	SPACER
15	2-4686	PULLEY ASSEMBLY
16	9-1184	SCREW, M10-1.50 x 40MM Hex Head Cap
17	9-1117	WASHER, M10 Split Lock
18	9-0391	WASHER, 5/16 Internal Tooth Lock
19	2-2239	GUIDE, Belt
20	9-0666	BOLT, 1/4-20 x 5/8" Short Neck Carriage, Grade 5 (2)
21	9-0583	NUT, 1/4-20 Hex Flange Lock (2)
22	2-4101	GUIDE, Belt

ENGINE COMPONENTS (Brigg's & Stratton Engines)



ITEM	PART NO.	DESCRIPTION
1	2-6870	ENGINE, Brigg's & Stratton, 14HP OHV
2	2-7390	DECAL, 14HP Brigg's & Stratton
3	4-1497	HEAT SHIELD, Valve Cover
4	4-1506	HEAT SHIELD, Muffler
5	2-6482	CLIP, "J" Type
6	9-0584	BOLT, 1/4-20 x 1/2" Hex Flange Lock (2)
7	9-0525	SCREW, #8-18 x 1/2" Hex Head, Self-Tapping (3)
8	4-1537	EXTENSION, Muffler
9	2-2486	EXTENSION, Oil Drain (Short)
10	1-2222	CLAMP, Fuel Line (2)
11	3-2015	LINE, Fuel
12	9-0196	NUT, 5/16-18 Hex (4)
13	9-0187	WASHER, 5/16 Split Lock (4)
14	9-0188	WASHER, 5/16 Flat (5)
15	1-5861	CLIP, Harness (2)
16	9-0211	SCREW, 5/16-18 x 1 1/2" Hex Hd. Cap (2)
17	2-4686	PULLEY ASSEMBLY
18	9-0247	WASHER, 7/16 Split Lock
19	9-0836	SCREW, 7/16-20 x 1" Hex Cap, Socket Hd.
20	9-0669	SCREW, 5/16-18 x 1 3/4" Hex Head Cap
21	2-4101	GUIDE, Belt
22	9-0391	WASHER, 5/16 Internal Tooth Lock

38" CUTTING DECK, BELTS, BRAKES



NOTE!
 SPINDLE ASSEMBLY
 BREAKDOWN & BLADES
 ARE SHOWN ON PAGE 20

38" CUTTING DECK, BELTS, BRAKES

ITEM	PART NO.	DESCRIPTION	ITEM	PART NO.	DESCRIPTION
1	2-6688	BELT, Drive, 38" Cutting Deck	55	5-3227	ASSEMBLY, Chute Deflector (Includes 1 ea. item 12 & 19, & items 18, 20, 21 & 56)
2	9-1006	NUT, 5/8-18 Hex Nyloc (2)	56	2-6831	DECAL DANGER
3	2-4634	PULLEY, Spindle (2)	57	2-6538	STRIP, Outer
4	9-0585	NUT, 5/16-18 Hex Flange Lock (28)	58	2-6695	ROLLER (5)
5	9-0063	NUT, 1/4-20 Hex	59	2-6658	SPRING, Extension
6	2-4908	NUT, 1/4-20 "T" Lock	60	2-6497	STRIP, Center
7	3-3816	DRUM, Brake	61	4-1511	ASSEMBLY, Torque Tube
8	1-4304	PIN, 1/4 x 1 5/8" Clevis	62	2-6537	QUADRANT, Height Adjustment
9	1-4302	BOLT, 1/4-20 Eye	63	2-6765	DECAL, Height Adjustment
10	1-3844	PIN, Hair (2)	64	4-1519	ASSEMBLY, Latch Shaft
11	5-2886	ASSEMBLY, Brake Band	65	2-6792	SPRING, Extension
12	9-0037	COTTER-PIN, 3/32 x 3/4" (4)	66	6-1392	CATCH, Up-Latch
13	3-3825	ANCHOR, Blade Brake	67	1-1201	NUT, 5/16-24 Hex
14	2-4801	GUARD, Belt (2)	68	2-6514	LINK, Deck
15	3-3407	PIN, Deck Hanger	69	9-0310	COTTER-PIN, 3/16 x 1 3/4"
16	2-6826	SCREW, 1/2-13 x 3 1/4" H.H.C.	70	1-6231	PIN, Hair, .08 x 1 3/16"
17	4-1510	LIFT, Front Arm	71	2-6764	BAR, Stabilizing (*See page 8)
18	2-6158	SPRING, Chute Deflector Hinge	72	2-6536	ANGLE, Adjustment
19	9-0188	WASHER, Flat (2)	73	9-0645	BOLT, 3/8-16 x 1" Short Neck Carr.
20	2-6750	HINGE, Deck	74	9-0613	NUT, 3/8-16 Hex Lock
21	2-6161	PIN, 5/16 x 3 3/16" Clevis	75	3-3972	TUBE, Structural (Left Hand)
22	1-5067	PIN, Hair, 3/32 x 1 19/32" (2)	76	9-0665	NUT, 3/8-16 Hex Jam
23	2-5074	WASHER, Flat	77	9-1239	SCREW, 3/8-16 x 1 1/2" Hex Head Cap, Grade 5
24	2-6648	SWIVEL, Lift	78	9-0748	SCREW, 1/2-13 x 3 1/2" Hex Head Cap, Grade 5
25	9-0625	NUT, 1/2-13 Hex Jam	79	9-0636	BOLT, 5/16-18 x 1" Hex Head Cap
26	2-6173	SPRING, Blade Brake	80	9-1152	WASHER, Flat, .406 I.D. x 1.50 O.D.(2)
27	2-6757	HITCH (Left Hand)	81	3-3728	BRACKET, Idler
28	2-6827	SWIVEL, Lift	82	3-4022	GUIDE, Belt
29	2-4267	BOLT, 3/8-24 x 1.33" Shoulder, Hex Washer Head	83	2-6310	PULLEY, Idler
30	9-0041	COTTER-PIN, 1/8 x 1" (2)	84	9-1121	NUT, 1/2-13 Hex Nyloc
31	4-1509	BELLCRANK	85	2-5061	DECAL, 38" Deck
32	9-0001	BOLT, 5/16-18 x 3/4" Short Neck Carriage (28)	86	1-6973	DECAL - CAUTION (Rotating Blades)
33	2-6525	BRACKET, Front Linkage	87	9-0815	SCREW, 3/8-16 x 3/4" Self-Tapping (6)
34	9-0289	NUT, 3/8-24 Hex Center Lock (3)	88	2-6618	STUD, Idler
35	3-3756	BRACKET, Gage Wheel, Front (2)	89	1-2306	BUSHING, Flange (2)
36	9-0122	WASHER, 3/8 Flat (5)	90	3-3929	GUIDE, Belt
37	9-0250	WASHER, 1/2 Flat (3)	91	4-1392	ARM, Idler Pulley
38	2-6122	WHEEL, Gage (2)	92	1-3847	RETAINER, 3/8 Bolt
39	1-1720	BOLT, 3/8-24 Shoulder (2)	93	2-4725	PULLEY, Idler
40	3-3639	DECK, 38" Cutting	94	7-6979	NUT, 3/8-16 Hex Nyloc
41	9-0844	ROLL-PIN, 3/16 x 3/4"	95	1-4852	DECAL - CAUTION
42	1-2776	PIN, 1/4 x 1 1/16" Round Head	96	4-1512	ASSEMBLY, Roller Shaft
43	9-0548	SCREW, 1/4-20 x 1" Hex Head Cap, Grade 5 (2)	97	9-0738	BOLT, 3/8-16 x 2 3/4" Short Neck Carriage, Grade 5
44	3-3971	TUBE, Structural (Right Hand)	98	1-1791	RETAINER, 5/16 Bolt
45	2-6504	HANDLE, Lift	99	2-6759	ANCHOR, Cable (welded)
46	2-6525	CATCH, Lift Handle			
47	2-3658	KNOB, Lift Handle			
48	2-6790	GRIP, Lever			
49	2-6761	LEVER, Latch			
50	9-1020	PUSH-NUT, 1/4" I.D.			
51	2-6762	ANCHOR, Cable			
52	9-0761	NUT, 1/4-20 Hex Top Lock (3)			
53	2-6774	CABLE, Transport Latch			
54	9-0492	WING-NUT, 5/16-18			

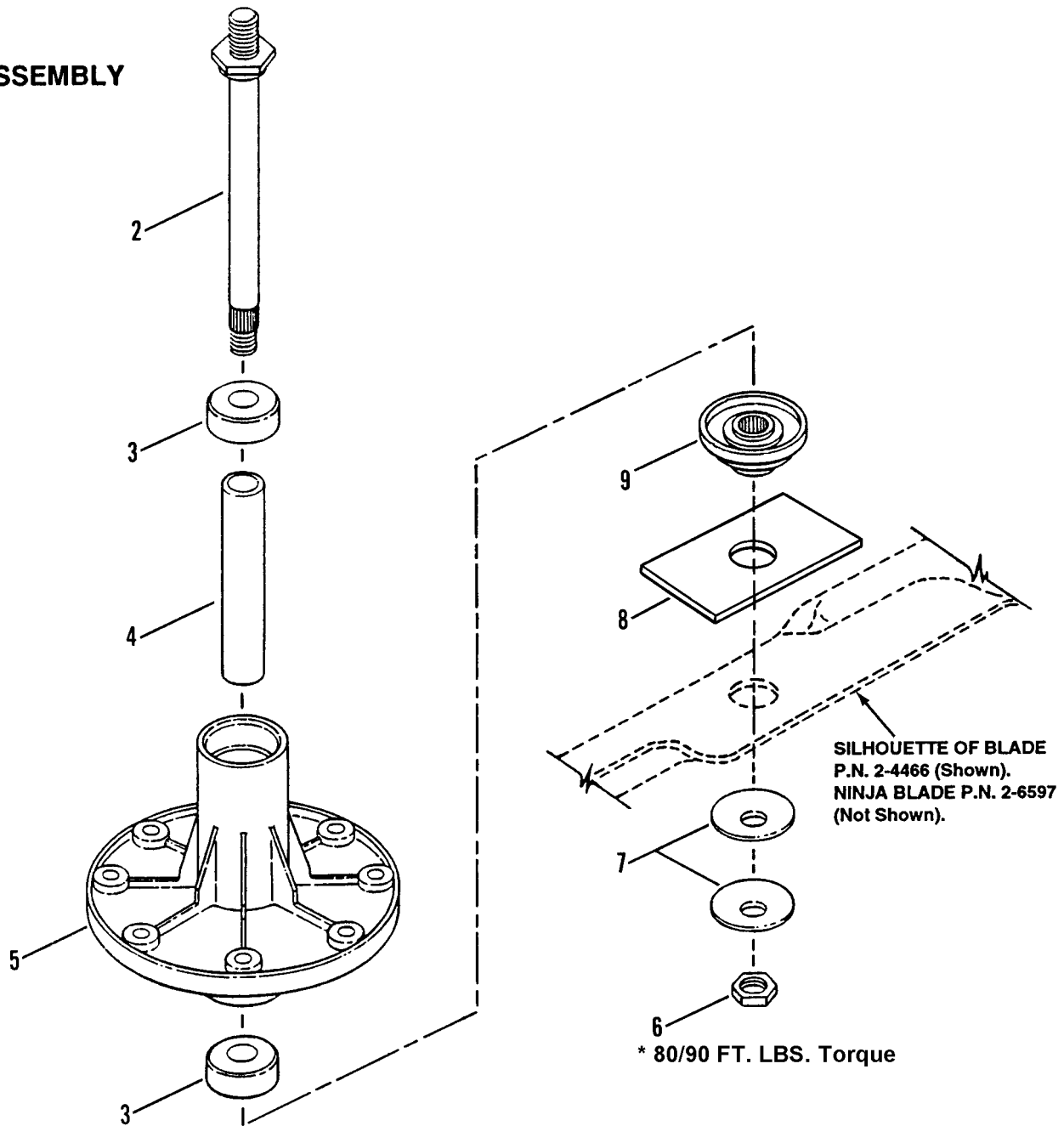
**FOR COMPLETE 38" DECK
ASSEMBLY- ORDER 6-1299**

42" CUTTING DECK (Belt, Blade Brake Shown On Page 22)

ITEM	PART NO.	DESCRIPTION	ITEM	PART NO.	DESCRIPTION
1	5-1916	DECK, 42" Cutting (Includes items 44 & 56)	37	4-1559	BRACKET, Idler
2	5-1401	DEFLECTOR, Side Discharge (Includes item 3)	38	3-4041	GUIDE, Belt
3	1-3010	DECAL - DANGER	39	1-8574	PULLEY, Idler
4	9-0859	SCREW, 3/8-24 x 3 3/4" Hex Head Cap (4)	40	1-4583	STUD, Idler
5	1-5272	SPACER (4)	41	1-0027	NUT, 3/4-16 Hex Jam (2)
6	1-9190	WHEEL, Gage (4)	42	1-5724	PULLEY, Spindle (2)
7	9-0289	NUT, 3/8-24 Hex Lock (4)	43	2-4910	DECAL, 42" Deck
8	9-0585	NUT, 5/16-18 Hex Flange Lock (12)	44	1-6973	DECAL - CAUTION (Rotating Blades)
9	2-3606	CAP, Vinyl (2)	45	3-3086	ASSEMBLY, Rear Support
10	5-1747	ASSEMBLY, Spindle Lock (2)	46	1-4407	WASHER, Spindle (2)
11	9-0850	BOLT, 3/8-16 x 3/4" Carriage (10)	47	9-0167	BOLT, 3/8-24 x 2" Hex Hd. Cap, Gr. 5
12	3-3083	SUPPORT, Deck, Front (Left Side)	48	9-0788	BOLT, 5/16-18 x 3/4" Carriage (2)
13	9-0600	WASHER, Flat (4)	49	5-9723	ASSEMBLY, Spindle (Right Hand)
14	2-7430	CABLE, Deck Support (2) (3.88")	50	9-0612	BOLT, 3/8-16 x 3/4" Hex Flg. Lk. (12)
15	3-2297	BRACKET, Front Hanger (Left Side)	51	1-9795	BLADE, 21" Cutter (2)
16	9-0613	NUT, 3/8-16 Hex Flange Lock (22)	52	1-2063	WASHER, Cone, 13/32 x 1 13/32" Dia. (4)
17	3-8043	BRACKET, Front Lift Arm Hanger	53	9-0824	SCREW, 3/8-24 x 1 1/4" Hex Head Cap, Grade 5 (2)
18	9-0388	T-NUT, 5/16-18	54	9-0383	BOLT, 5/16-18 x 1" Short Neck Carriage (2)
19	9-0582	BOLT, 3/8-16 x 1" Hex Fl. Lock (2)	55	9-0799	BOLT, 5/16-18 x 5/8" Carriage (2)
20	5-2487	ASSEMBLY, Spindle Brace (2)	56	1-4852	DECAL - CAUTION (Deflector in Place)
21	3-3367	GUARD, Pulley (Right Hand)	57	1-1791	RETAINER, 5/16 Bolt (2)
22	9-0563	SCREW, 3/8-16 x 1" Hex Head Cap	58	9-0187	WASHER, 5/16 Split Lock (2)
23	1-5012	ECCENTRIC, Leveling	59	9-0375	WING-NUT, 5/16-18 (2)
24	9-0130	NUT, 3/8-16 Hex (2)	60	5-2959	ASSEMBLY, Spindle (Left Hand)
25	9-0118	WASHER, 3/8 Split Lock (3)	61	3-3739	GUARD, Pulley (Left Hand)
26	3-8382	BRACKET, Front (Right Side)	62	9-0390	WASHER, 3/8 Internal Tooth Lock
27	3-2432	LINK, Adjustment	63	3-4202	PLATE, Support
28	9-0122	WASHER, 3/8 Flat (2)	64	9-0636	SCREW, 5/16-18 x 1" Hex Head Cap (2)
29	3-3407	PIN, Deck Hanger			
30	2-2893	CABLE, Deck Lift (4.75")			
31	3-2276	CLEVIS, Lift Cable			
32	1-5067	PIN, Hair, 3/32 x 1 1/2"			
33	1-0736	PIN, Clevis, 3/8 x 1 1/16"			
34	1-3844	PIN, Hair, .148 x 2.62"			
35	4-1480	ASSEMBLY, Front Hanger			
36	9-0155	NUT, 3/8-24 Hex			

SPINDLE ASSEMBLY - 38" Cutting Deck

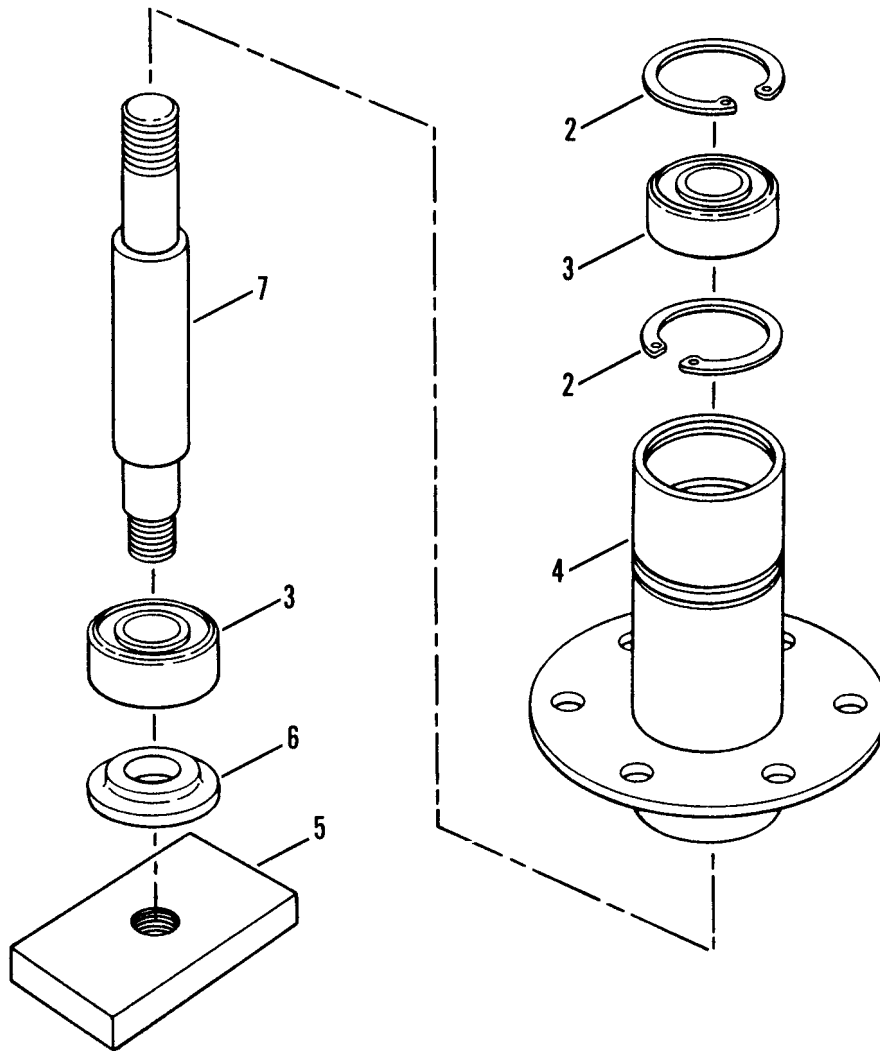
① ASSEMBLY



ITEM	PART NO.	DESCRIPTION
1	5-2847	ASSEMBLY, Spindle Housing, 38" Cutting Deck (Includes items 2, 3, 4, 5, 6, 7, & 9) (2)
-	5-3063	ASSEMBLY, Spindle Housing, 38" Cutting Deck (Includes items 2 thru 9) (Model RLT125G38AKV Only - Ninja Blade) (2)
2	2-6754	SPINDLE (7.019")
3	2-6808	BEARING, Spindle (2)
4	2-4465	SPACER, Spindle Housing
5	2-4461	HOUSING, Spindle
6	2-4468	NUT, 9/16-18 Hex Jam
7	2-4467	WASHER, Bellville, 19/32" I.D. x 1 3/4" O.D. (2)
8	2-6749	WASHER, Ninja Blade (Model RLT125G38AKV Only) (2)
9	2-4463	SPACER, Blade

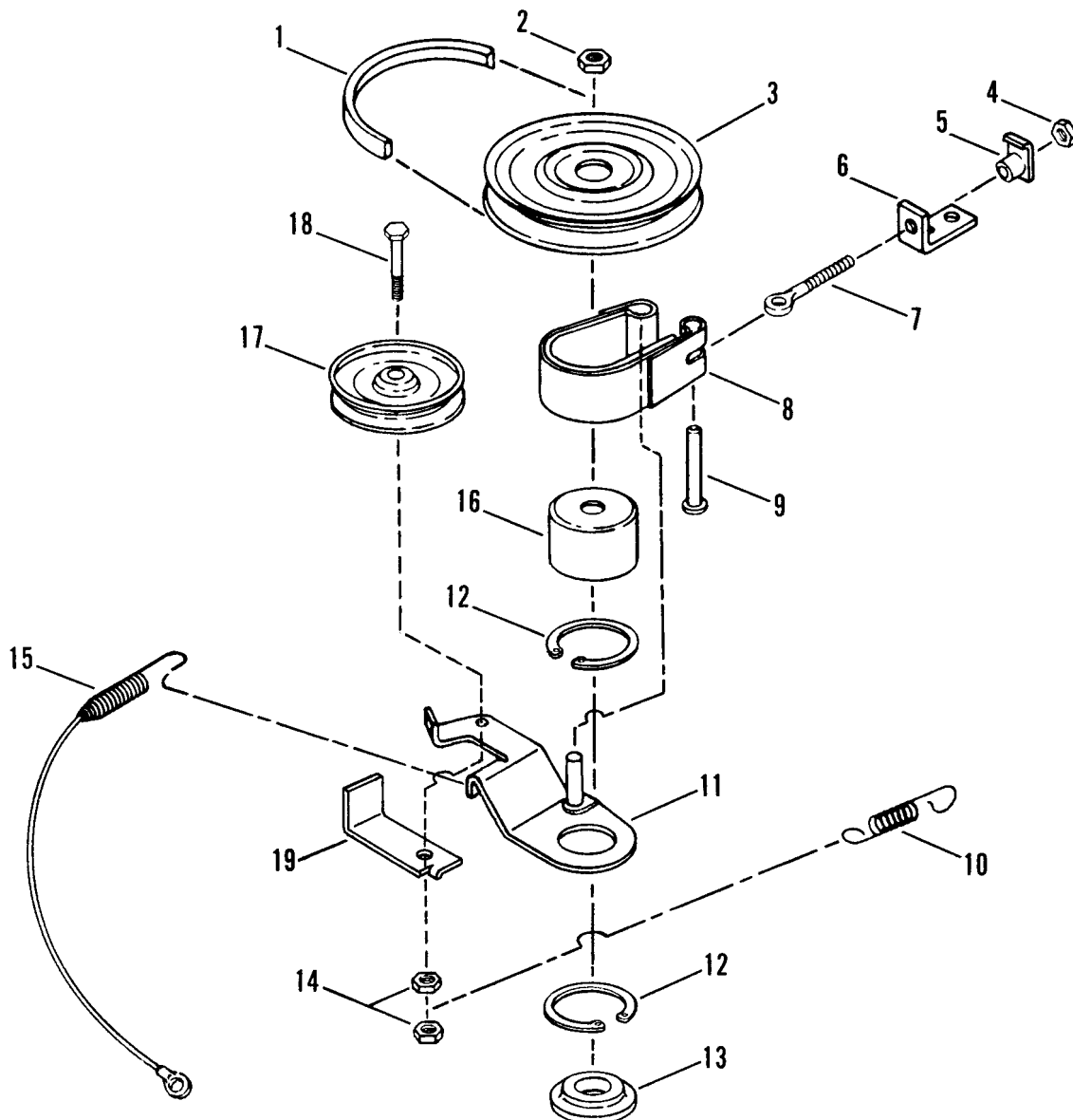
SPINDLE ASSEMBLY - 42" CUTTING DECK

① ASSEMBLY



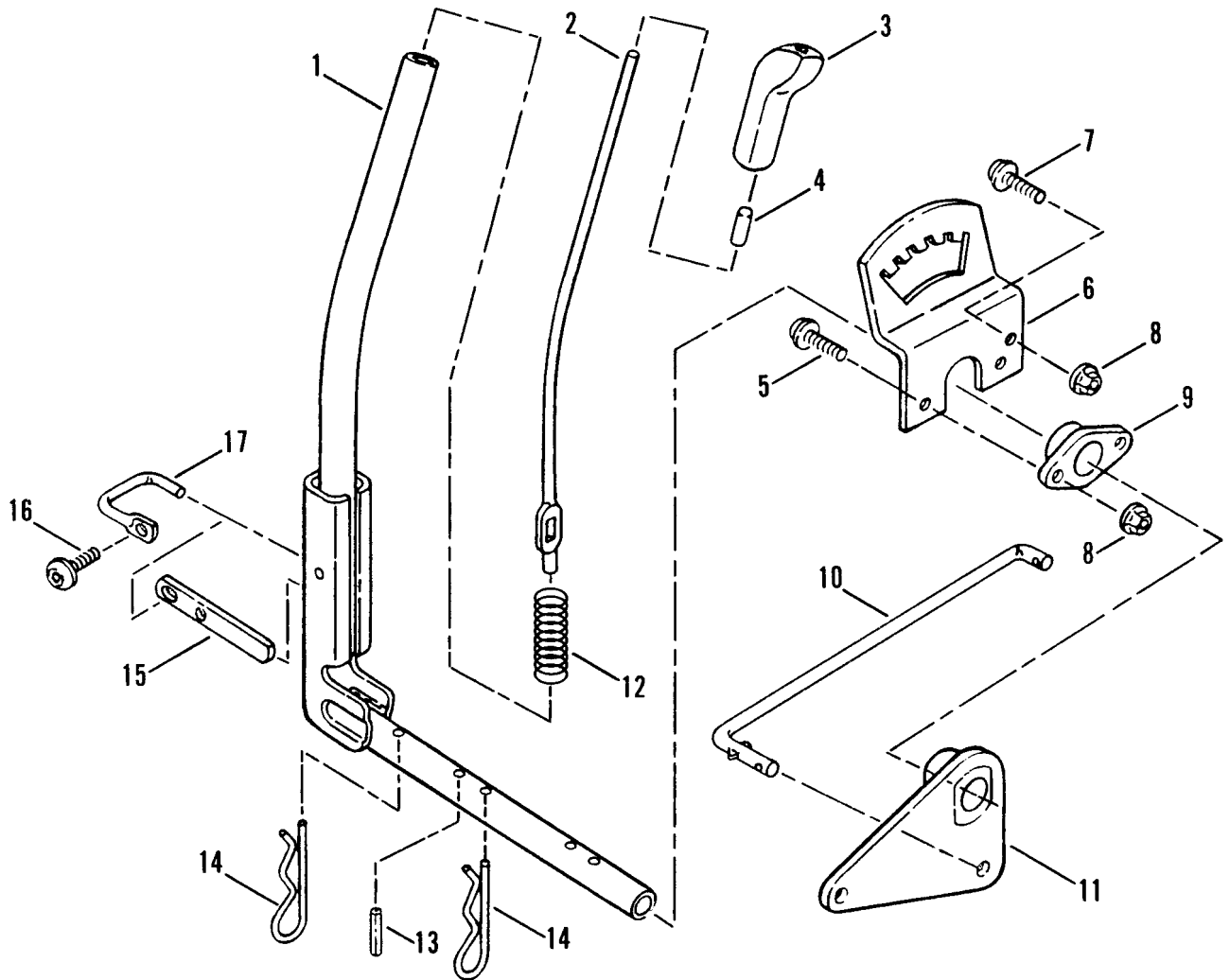
ITEM	PART NO.	DESCRIPTION
1	5-2959	ASSEMBLY, Spindle Housing, 42" Cutting Deck (Left Hand) (Includes items 2 thru 7)
--	5-9723	ASSEMBLY, Spindle Housing, 42" Cutting Deck (Right Hand) Includes items 2 thru 7)
2	1-2491	RING, Retaining (2)
3	1-3313	BEARING, Spindle (2)
4	4-1370	HOUSING, Spindle (Left Hand) (4.35")
--	4-7917	HOUSING, Spindle (Right Hand) (5.1")
5	3-2294	HOLDER, Blade
6	1-4407	WASHER, Spindle
7	2-4817	SPINDLE (Left Hand) (5.75")
--	2-7668	SPINDLE (Right Hand) (6.5")

BELT, BLADE BRAKE - 42" CUTTING DECK



ITEM	PART NO.	DESCRIPTION
1	1-4799	BELT, Drive ('93 Model Year & Earlier) (A101)
-	2-7737	BELT, Drive ('94 Model Year) (HA101.7)
2	1-0027	NUT, 3/4-16 Hex Jam
3	2-4863	PULLEY, Drive
4	9-0063	NUT, 1/4-20 Hex
5	1-4303	TEE-NUT, 1/4-20
6	3-2587	ANCHOR, Brake
7	1-4302	BOLT, 1/4-20 Eye
8	5-2886	ASSEMBLY, Brake Band
9	1-1021	PIN, Clevis, 1/4 x 1 1/4"
10	2-3172	SPRING, Blade Brake
11	4-7912	ASSEMBLY, Brake Arm
12	1-0740	RING, Retaining (2)
13	1-4407	WASHER, Spindle
14	9-0289	NUT, 3/8-24 Hex Lock (2)
15	2-4765	CABLE, Blade
16	3-2169	DRUM, Brake
17	1-8574	PULLEY, Idler
18	9-0167	SCREW, 3/8-24 x 2" Hex Head Cap
19	3-4043	GUIDE, Belt

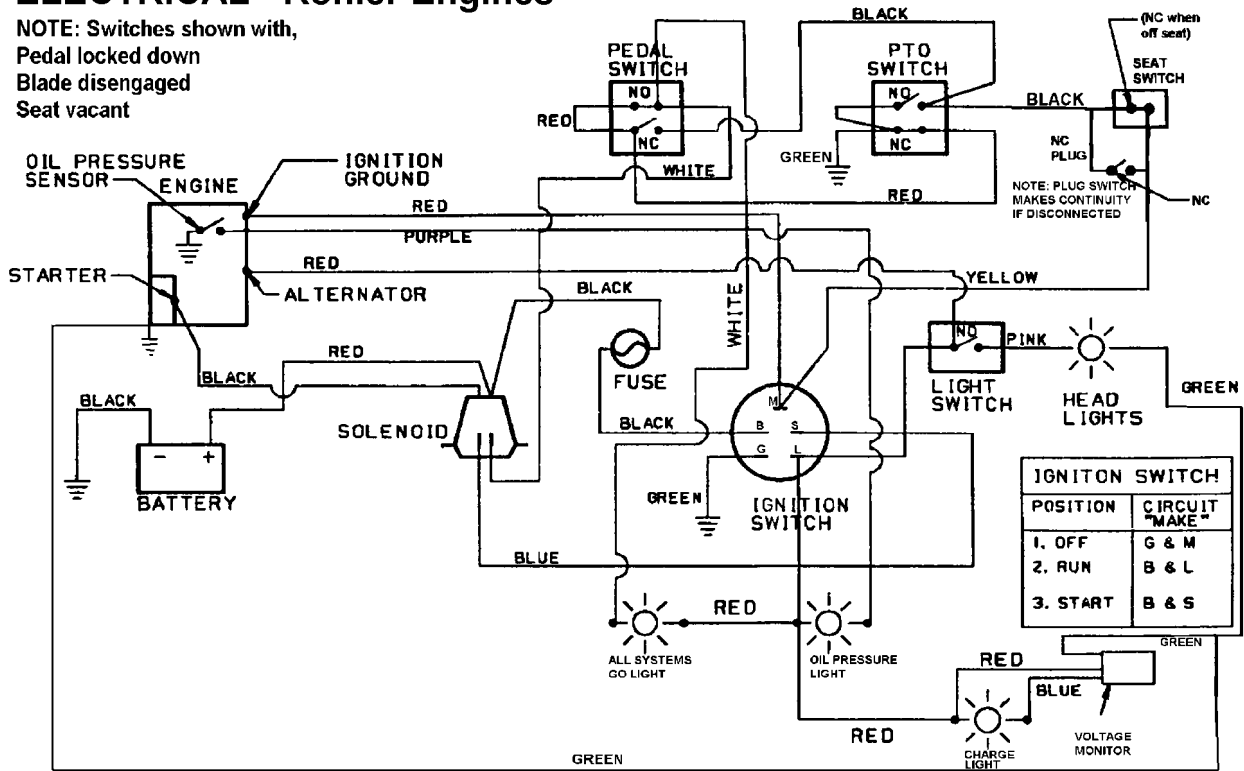
IMPLEMENT LIFT PARTS - 42" CUTTING DECK



ITEM	PART NO.	DESCRIPTION
1	4-1015	STRUCTURE, Lift Lever
2	2-2565	ROD, Lift Lever
3	1-9363	KNOB, Lift Lever
4	1-4361	CAP, Lever Rod
5	9-1000	SCREW, 5/16-18 x 7/8" Truss Head (Torx) (2)
6	3-3449	QUADRANT, Lift Lever
7	9-1001	SCREW, 5/16-18 x 5/8" Truss Head (Torx)
8	9-0585	NUT, 5/16-18 Hex Flange Lock (3)
9	2-2567	PIVOT, Lift Lever
10	2-2964	ROD, Lift Link
11	4-1301	BELLCRANK, Lift Structure
12	2-2566	SPRING, Lift Lever Rod
13	2-2895	PIN, 1/4 x 1 1/8" Dowel
14	1-3844	PIN, 5/32 x 2 5/8" Hair (2)
15	2-2568	DETENT, Latch
16	9-0999	SCREW, 1/4-20 x 5/8" Truss Head (Torx)
17	2-4742	LATCH, Pivot

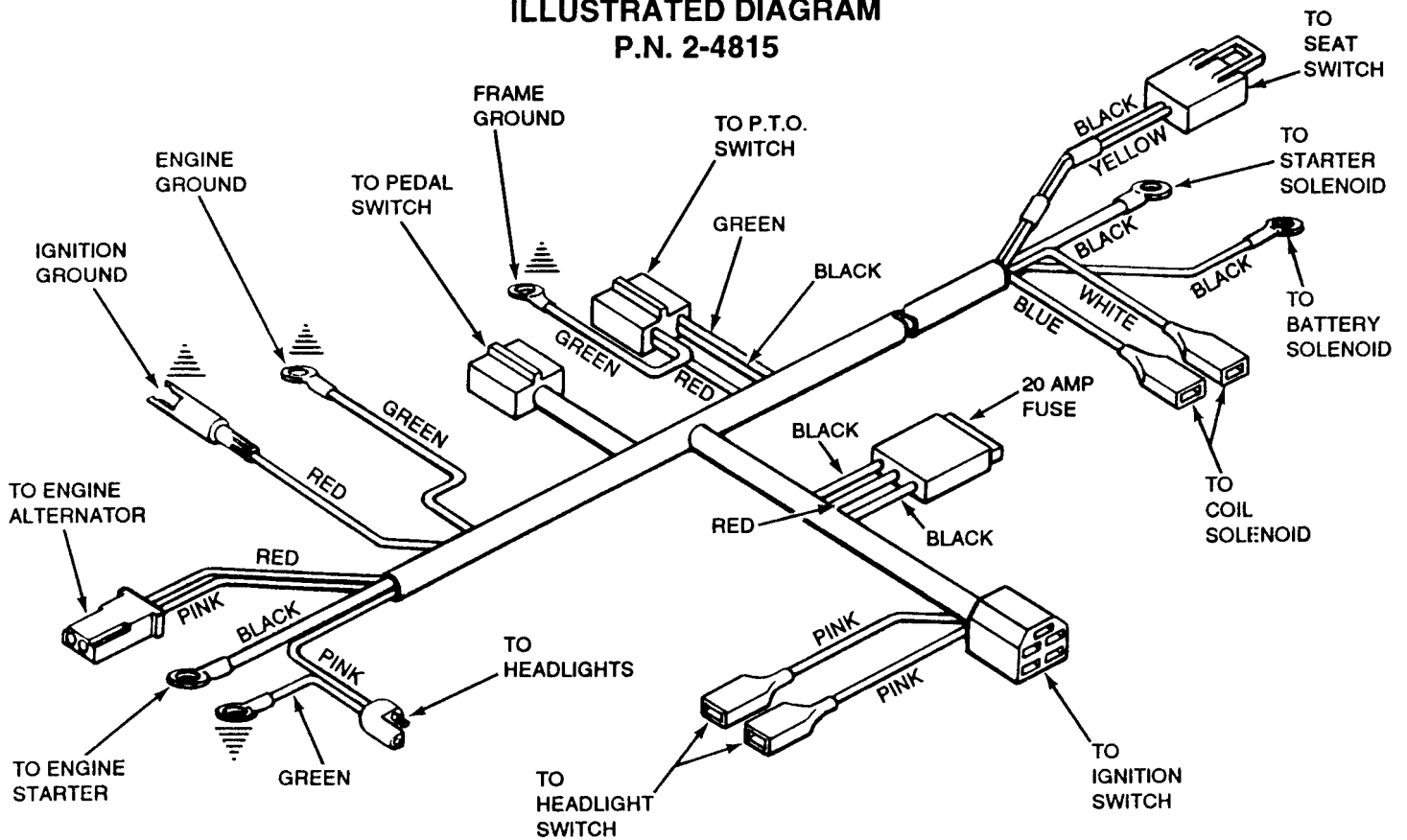
ELECTRICAL - Kohler Engines

NOTE: Switches shown with,
Pedal locked down
Blade disengaged
Seat vacant



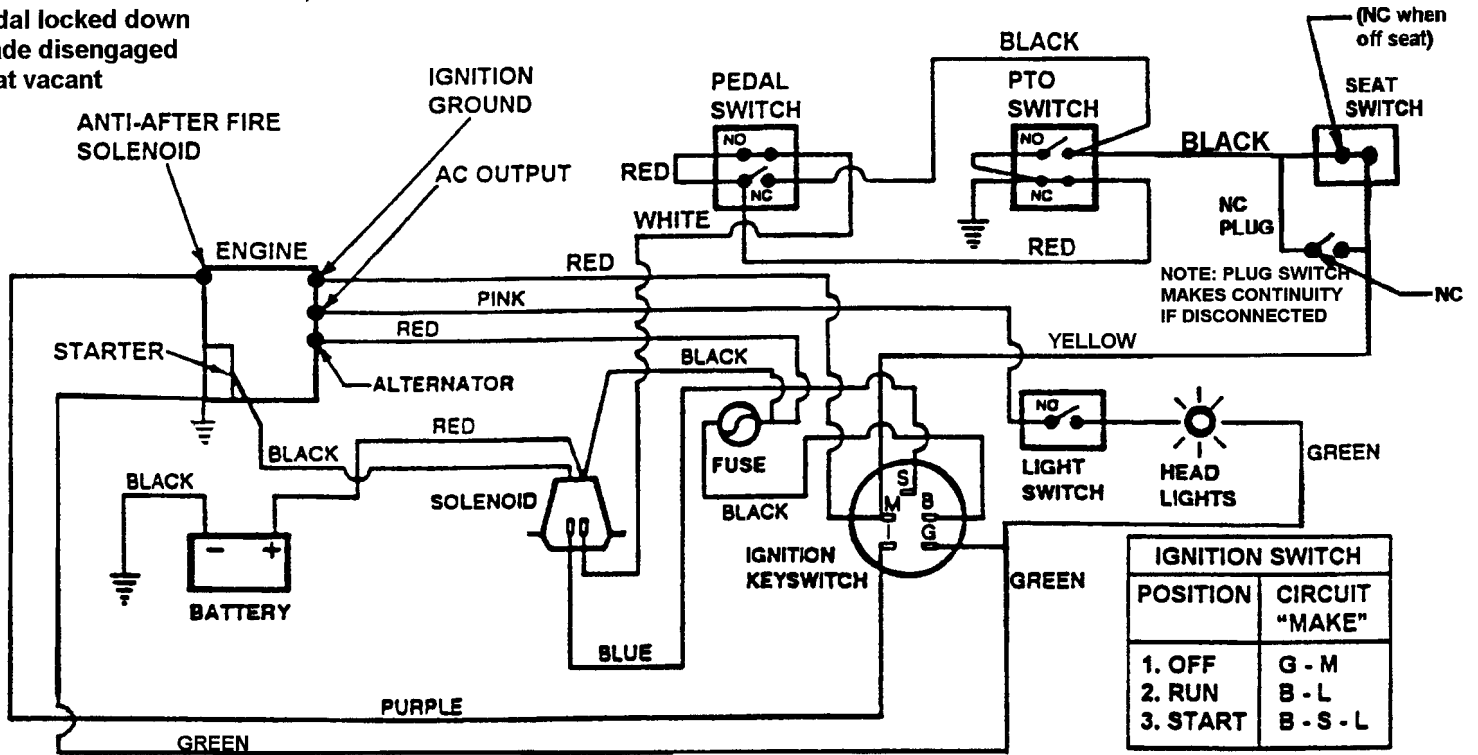
SCHEMATIC - WIRING HARNESS P.N. 24815

**ILLUSTRATED DIAGRAM
P.N. 2-4815**



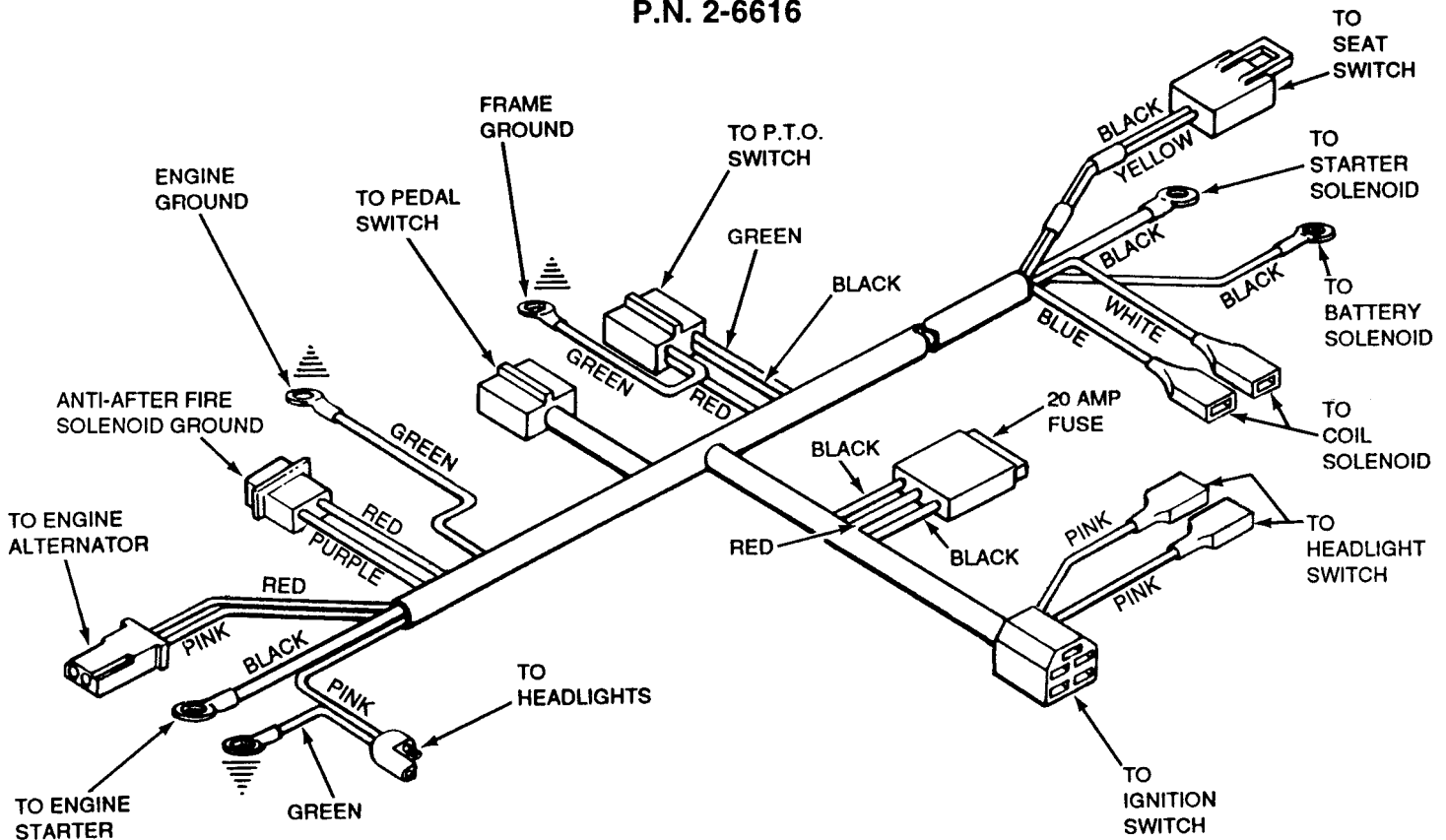
ELECTRICAL - B&S Engines

NOTE: Switches shown with,
Pedal locked down
Blade disengaged
Seat vacant

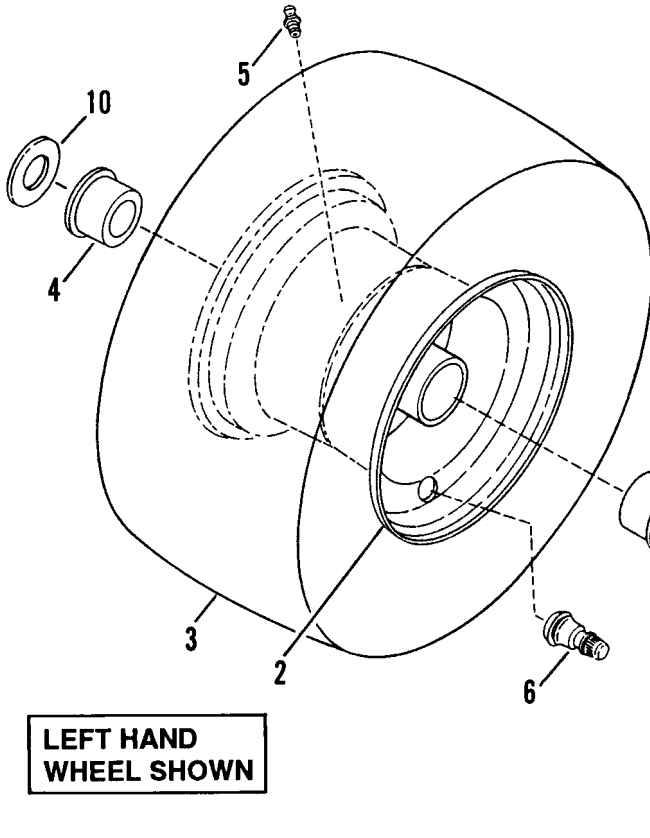


SCHEMATIC - WIRING HARNESS P.N. 2-6616

ILLUSTRATED DIAGRAM P.N. 2-6616



WHEELS - FRONT

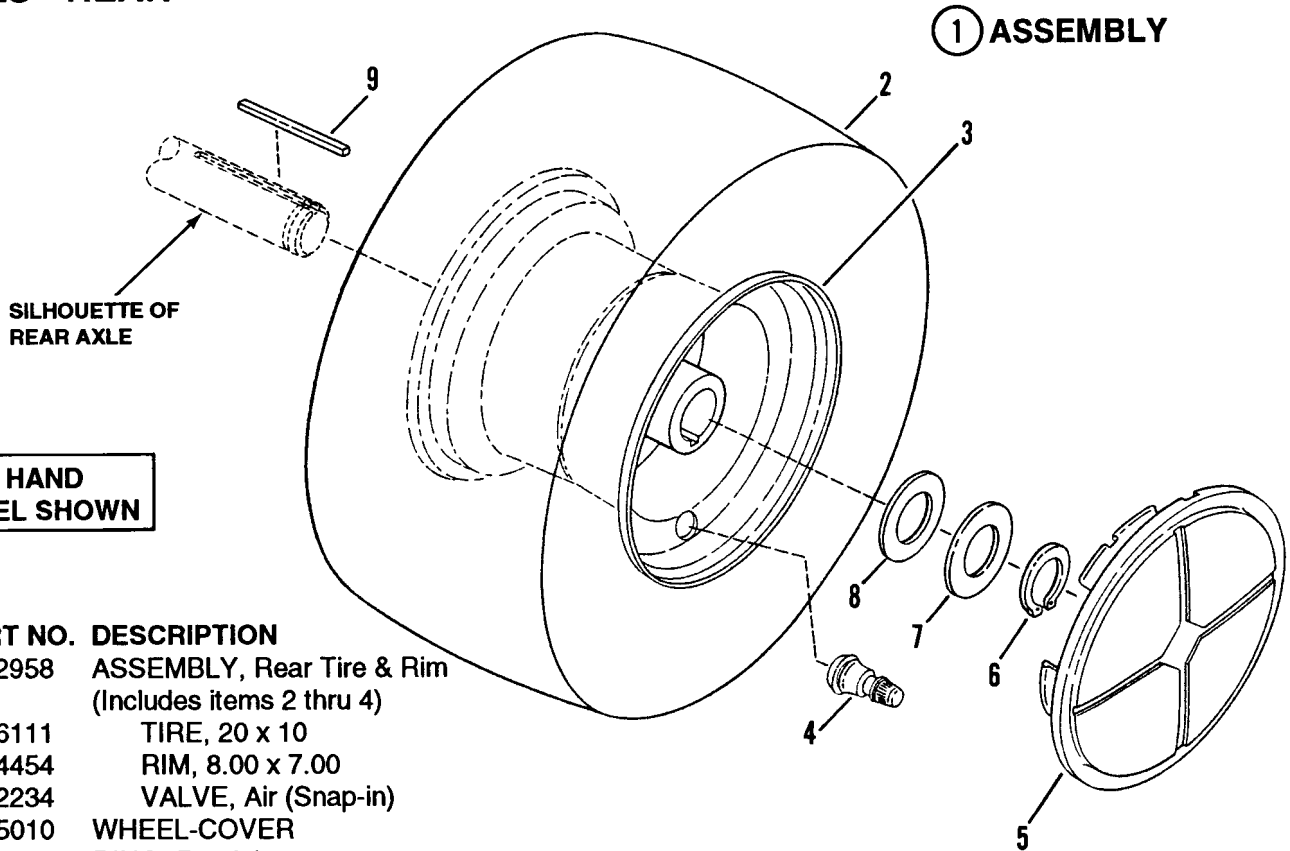


ITEM	PART NO.	DESCRIPTION
1	5-2957	ASSEMBLY, Front Tire & Rim (Includes items 2 thru 6)
2	2-2772	RIM, 6.00 x 4.50
3	2-6109	TIRE, 15 x 6.00
4	1-4483	BEARING, Wheel (2)
5	1-3876	FITTING, Lube
6	1-2234	VALVE, Air (Snap-in)
7	3-2027	WASHER, 49/64" I.D. x 1 1/2" O.D.
8	9-0364	COTTER-PIN, 5/32 x 1"
9	2-5009	WHEEL-COVER
10	3-3701	WASHER, 25/32" x 1 1/2" O.D.

① ASSEMBLY

LEFT HAND
WHEEL SHOWN

WHEELS - REAR



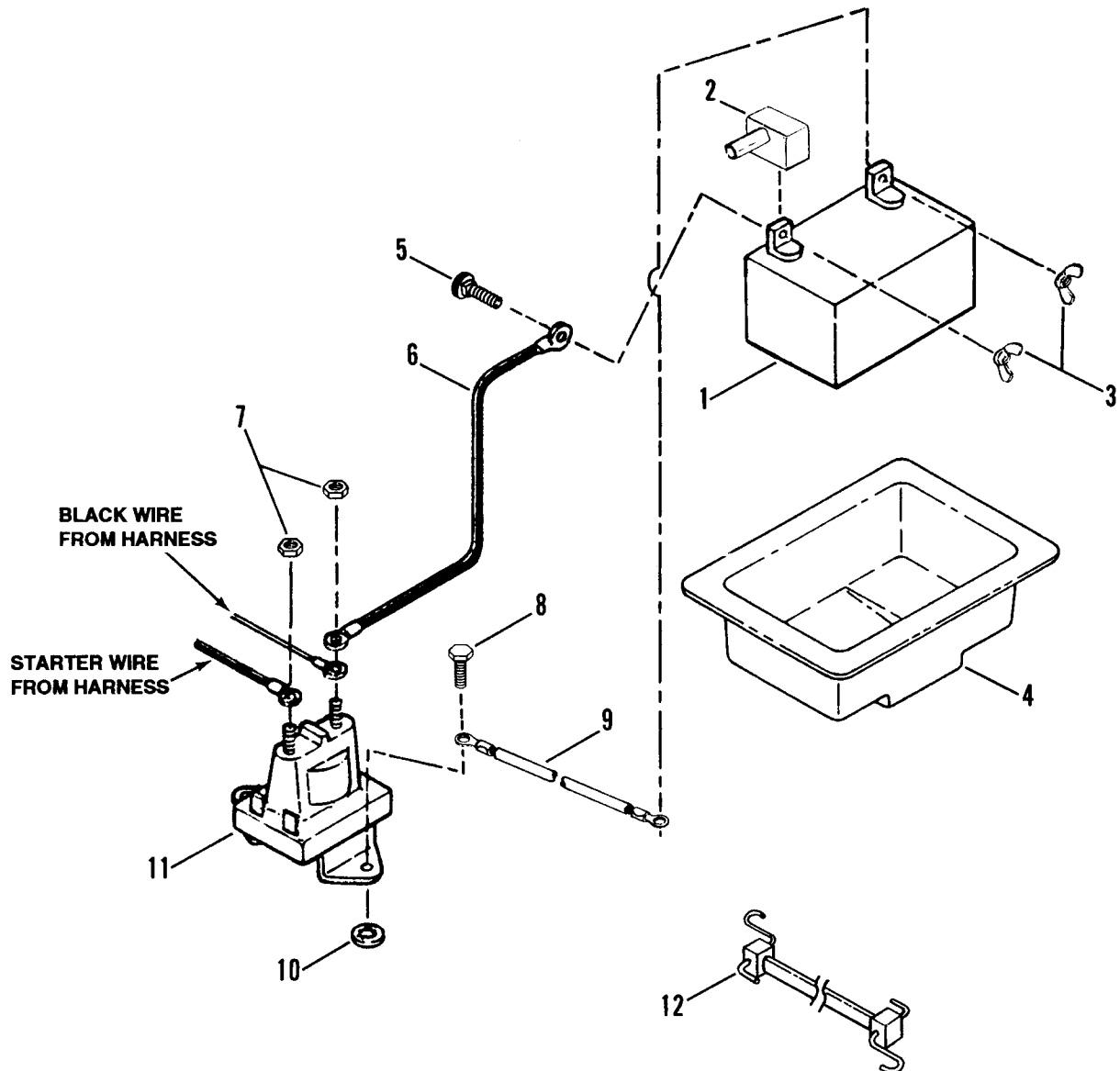
① ASSEMBLY

SILHOUETTE OF
REAR AXLE

LEFT HAND
WHEEL SHOWN

ITEM	PART NO.	DESCRIPTION
1	5-2958	ASSEMBLY, Rear Tire & Rim (Includes items 2 thru 4)
2	2-6111	TIRE, 20 x 10
3	2-4454	RIM, 8.00 x 7.00
4	1-2234	VALVE, Air (Snap-in)
5	2-5010	WHEEL-COVER
6	1-2705	RING, Retaining
7	1-1071	WASHER, 49/64" I.D. x 1 5/8" O.D. Thrust
8	3-2027	WASHER, Flat 49/64" I.D. X 1 1/2" O.D.
9	1-7173	KEY, Square, 3/16" x 2 1/2"

ELECTRICAL COMPONENTS



ITEM	PART NO.	DESCRIPTION
1	6-0618	KIT, Battery (Includes Decal P.N. 1-6134 & Battery Without Acid)
2	1-2444	COVER, Positive Terminal
3	9-0311	WING-NUT, 1/4-20 (2)
4	1-7853	TRAY, Battery
5	9-0074	BOLT, 1/4-20 x 3/4" Carriage (2)
6	1-4476	CABLE, Positive (Red)
7	9-0977	NUT, 1/4-20 Hex Jam (2)
8	9-0539	SCREW, 1/4-20 x 1/2" Self-Tapping (2)
9	2-6414	CABLE, Ground (Black)
10	1-2485	RETAINER, 1/4 Bolt
11	7-5622	SOLENOID (Was 1-8604)
12	2-6678	TIE, Strap

Parts Manual for

SNAPPER®

MODELS: LT125G38AKV

LT130G38AKV

LT140G38ABV

LT140G42ABV

LT140G42AKV

LT150G42AKV

& RLT125G38AKV

SERIES "A"

LAWN TRACTORS

& MOWER

ATTACHMENTS

SNAPPER® McDonough, GA., 30253 U.S.A.