

*Parts Manual for*

# **SNAPPER®**

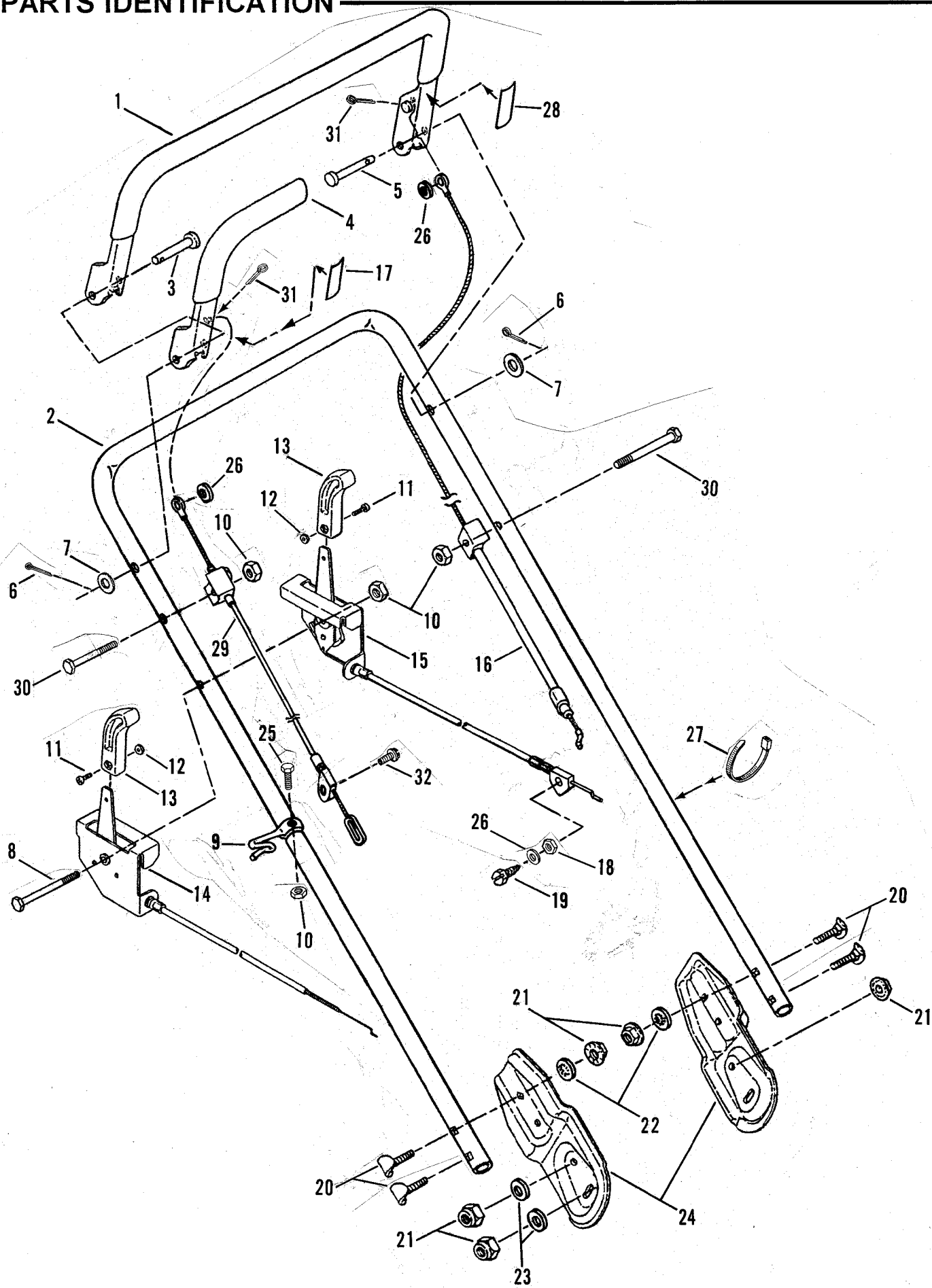
**21" SERIES 0 COMMERCIAL  
REAR DISCHARGE  
WALK BEHIND  
MOWER MODELS  
CLP21650RV  
ECLP21650RV**



IT IS THE POLICY OF SNAPPER TO IMPROVE ITS PRODUCTS WHENEVER IT IS POSSIBLE AND PRACTICAL TO DO SO. WE RESERVE THE RIGHT TO MAKE CHANGES OR ADD IMPROVEMENTS AT ANY TIME WITHOUT INCURRING ANY OBLIGATION TO MAKE SUCH CHANGES ON PRODUCTS MANUFACTURED PREVIOUSLY.

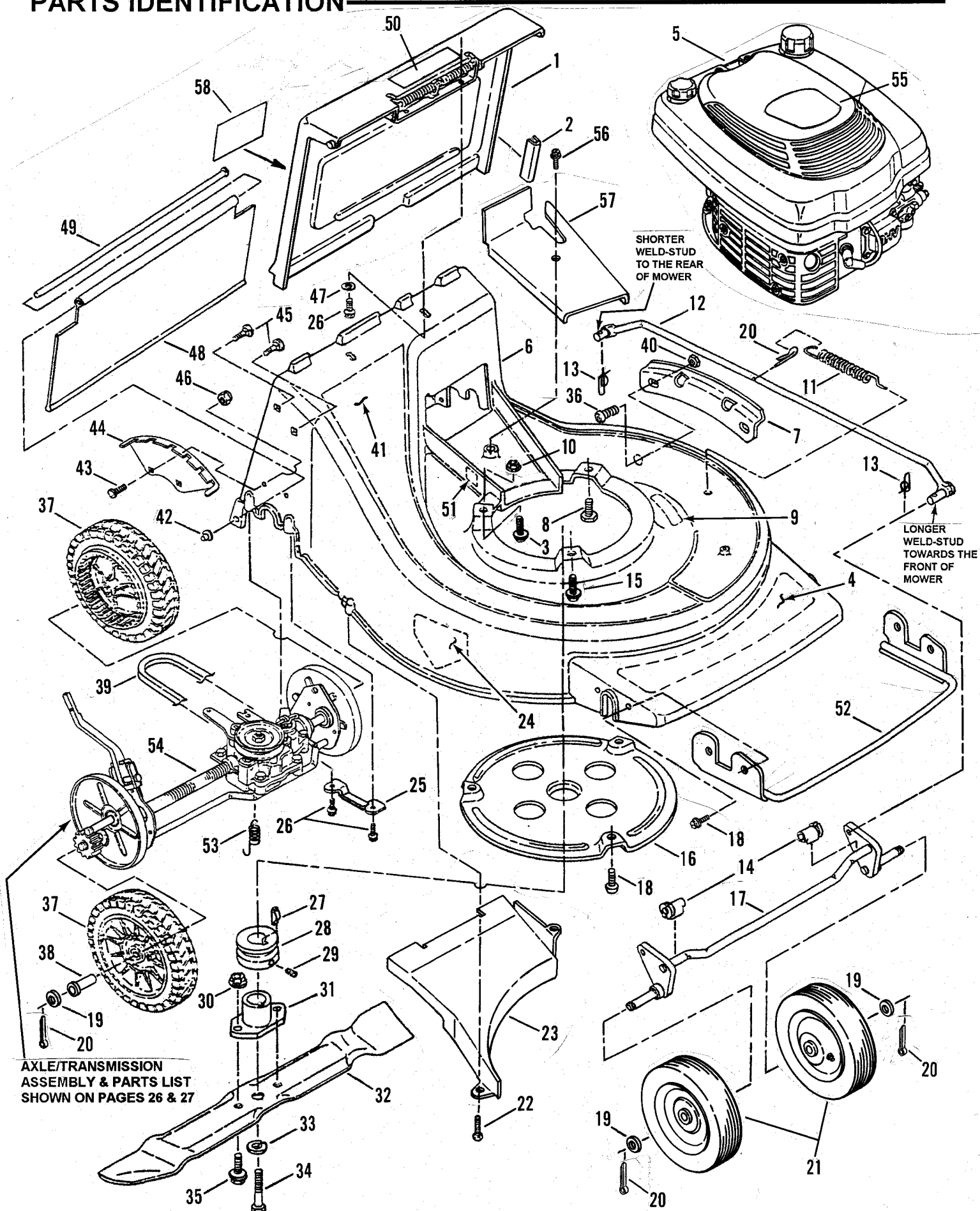
**SNAPPER®** McDonough, GA., 30253 U.S.A.

# PARTS IDENTIFICATION



<b>ITEM</b>	<b>PART NO.</b>	<b>DESCRIPTION</b>
1	2-8933	CONTROL, Blade/Engine
2	3-4786	BAR, Handle
3	9-1644	PIN, 5/16 x 1-23/32" Clevis
4	2-8815	CONTROL, Wheel Drive
5	9-1645	PIN, 5/16 x 1 7/16" Clevis
6	9-0555	COTTER-PIN, 3/32 x 1/2" (2)
7	9-1076	WASHER, 5/16" Flat (2)
8	9-1251	SCREW, 1/4-20 x 2-1/2" Hex Head Cap, Grade 5
9	2-2779	GUIDE, Rope
10	7-6978	NUT, 1/4-20 Hex Nyloc (4)
11	9-1017	SCREW, #8-32 x 3/8" Fillister Head (2)
12	9-1018	NUT, #8-32 Hex (2)
13	2-3655	KNOB, Engine Speed Control & Ground Speed Control (2)
14	2-8887	CONTROL, Engine Speed
15	2-8886	CONTROL, Ground Speed
16	2-9192	ASSEMBLY, Blade/Engine Control Cable (Robin)
17	2-9432	DECAL, Ground Drive
18	9-1267	NUT, #10-24 Hex Center Lock
19	9-0624	BOLT, #10-24 x 3/4" Slotted Hex Head
20	9-1190	BOLT, 5/16-18 x 1-1/2" Curved Head Carriage (4)
21	9-1298	NUT, 5/16-18 Hex Lock (8)
22	9-0391	WASHER, 5/16" Internal Tooth Lock (4)
23	9-1296	WASHER, 11/32" Flat (4)
24	3-4848	BRACKET, Handlebar (2)
25	7-9577	SCREW, 1/4-20 x 1-1/2" Hex Head Cap (2)
26	9-1702	WASHER, 3/16 Flat (3)
27	2-4641	TIE, Wire (4)
28	2-9431	DECAL, Operator Presence Control
29	2-8817	CABLE, Wheel Drive Control
30	9-0505	SCREW, 1/4-20 x 2" Hex Head Cap, Grade 5
31	9-1780	COTTER-PIN, 1/16 x 1/2" (2)
32	9-1075	SCREW, #10-24 x 5/8" Slotted Hex Washer Head, Self-Tapping

# PARTS IDENTIFICATION

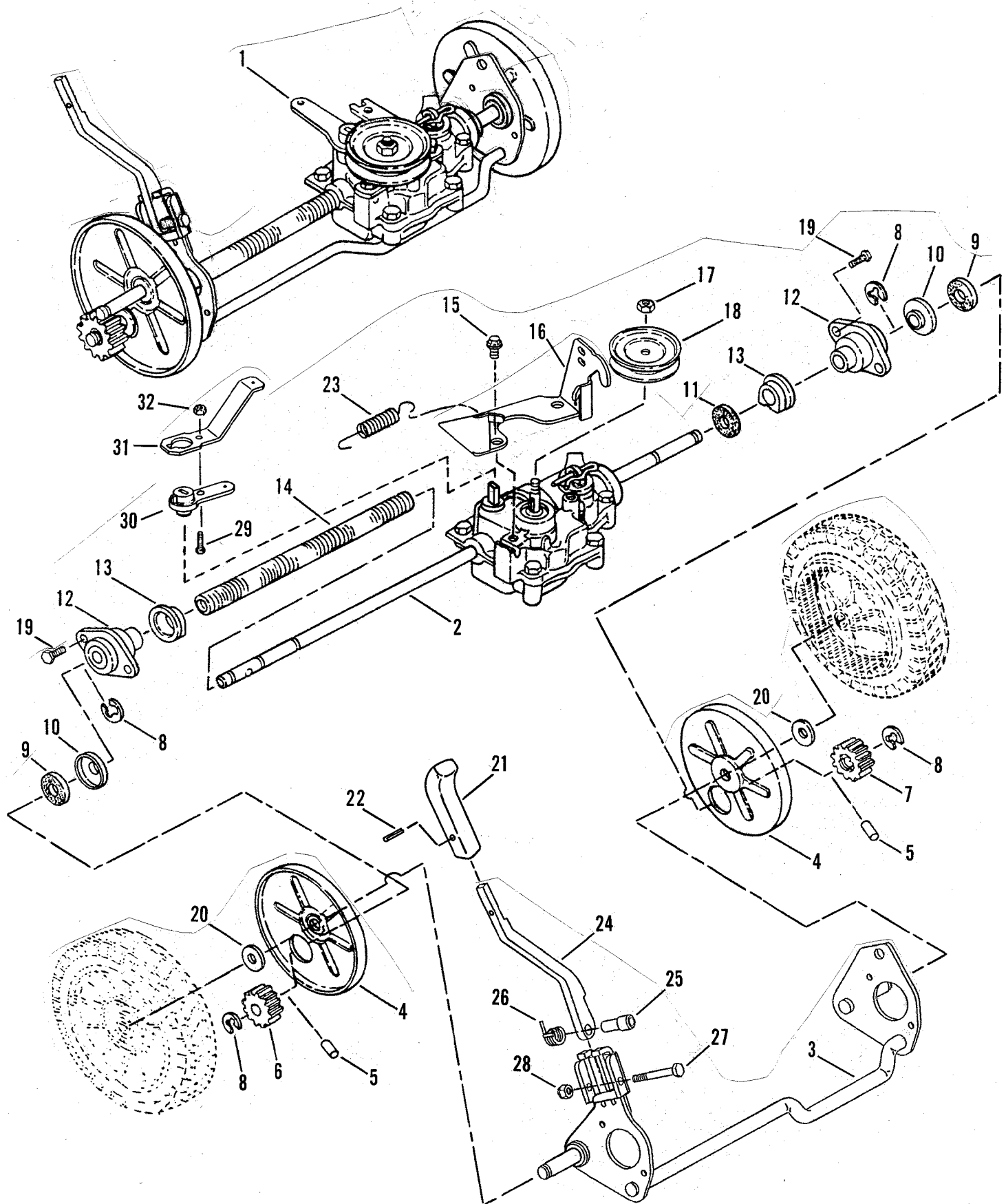


# PARTS IDENTIFICATION

ITEM	PART NO.	DESCRIPTION
1	5-3874	ASSEMBLY, Discharge Door (Commercial)
2	3-5411	BUMPER, Door
3	9-0700	BOLT, 5/16-18 x 1-1/2" Hex Flange Lock
4	2-9428	DECAL, SNAPPER Platinum Commercial
5	**	ENGINE, Robin 6.5 HP Model - EH18V
6	3-4871	DECK, 21" Cast Aluminum
7	3-4734	GUARD, Wear (2)
8	9-0324	SCREW, 3/8-16 x 1" Hex Self-Tapping
9	2-8440	DECAL, WARNING (Deck)
10	9-0585	NUT, 5/16-18 Hex Flange Lock
11	2-4751	SPRING, Tie Bar
12	4-1744	ASSEMBLY, Tie Bar
13	9-1593	COTTER-PIN, 3/8 Self-Locking (2)
14	2-4558	BUSHING, Front Axle (2)
15	9-0595	BOLT, 5/16-18 x 3/4" Hex Flange Lock
16	4-2580	PROTECTOR, Crank Shaft
17	4-1739	ASSEMBLY, Front Axle
18	9-0999	SCREW, 1/4-20 x 5/8" Truss Head (Torx) (7)
19	9-1733	WASHER, 1/2" Flat (4)
20	9-1598	COTTER-PIN, 1/8 x 3/4" (5)
21	2-8833	ASSEMBLY, Wheels (Front) (2)
22	9-1075	SCREW, #10-24 x 5/8" Slotted Hex Washer Head, Self-Tapping (4)
23	4-1750	BAFFLE, Discharge
24	1-3010	DECAL - DANGER
25	3-3732	SUPPORT, Rear Axle (2)
26	9-0362	SCREW, 1/4-20 x 5/8" Hex Head, Self-Tapping (6)
27	1-6755	KEY, Square, 1/4" (2)
28	2-2106	PULLEY, Traction Drive
29	9-0201	SCREW, 5/16-18 x 5/16" Hex Socket Set
30	7-6979	NUT, 1/4-16 Hex Nyloc (2)
31	2-6631	HUB, Blade Drive, 25mm I.D.
32	2-6428	BLADE, 21" Bagging
33	7-9268	WASHER, 3/8 Split Lock (Heavy)
34	9-0483	SCREW, 3/8-24 x 1 3/4" Hex Cap (Grade 5)
35	9-0143	BOLT, 3/8-16 x 1 1/4" Hex Flange Lock (2)
36	9-1696	SCREW, 1/4-20 x 5/8" Truss Head Machine (Phillips) (4)
37	5-3880	ASSEMBLY, Rear Drive Wheel (2) (Includes item 38)
38	2-4541	BUSHING, Rear Wheel (2)
39	2-9492	BELT, Traction Drive
40	9-1603	NUT, 1/4-20 Hex Nyloc (4)
41	2-9429	DECAL, Deck (Right Side)
42	9-1020	NUT, 1/4" Push
43	9-1711	BOLT, #10-24 x 5/8" Flat Head Carriage (2)
44	3-4692	PLATE, Height Adjustment
45	9-1714	BOLT, 5/16-18 x 1" Carriage (Grade 5) (4)
46	9-1267	NUT, #10-24 Hex Center Lock (2)
47	9-0055	WASHER, 1/4 Flat (2)
48	2-4753	SHIELD, Trailing
49	2-4754	ROD, Trailing Shield Pivot
50	3-5857	DECAL - WARNING
51	3-6434	DECAL, Year of Manufacture (Model ECLP21650RV Only!)
52	4-1736	SUPPORT, Front Bumper
53	2-9395	SPRING, Transmission Extension
54	5-3898	AXLE/TRANSMISSION ASSEMBLY
55	2-9450	DECAL, Engine
56	9-1201	SCREW, #10-24 x 1-1/2" Slotted Hex Washer Head, Self-Tapping
57	4-6506	COVER, Ground Speed Drive Belt
58	4-6357	DECAL, Warning

**\*\* PURCHASE ENGINE & ENGINE PARTS, OTHER THAN  
THOSE LISTED, FROM ENGINE SERVICE OUTLETS.**

# PARTS IDENTIFICATION



## ITEM PART NO. DESCRIPTION

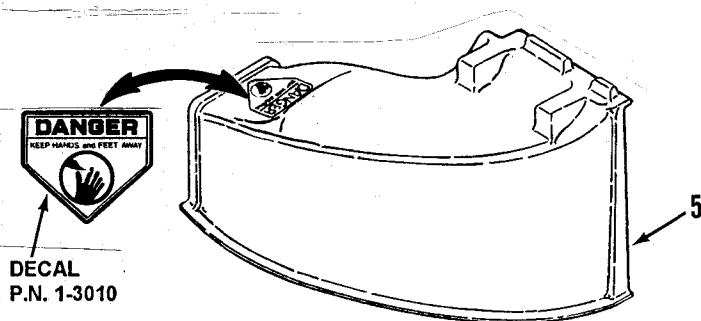
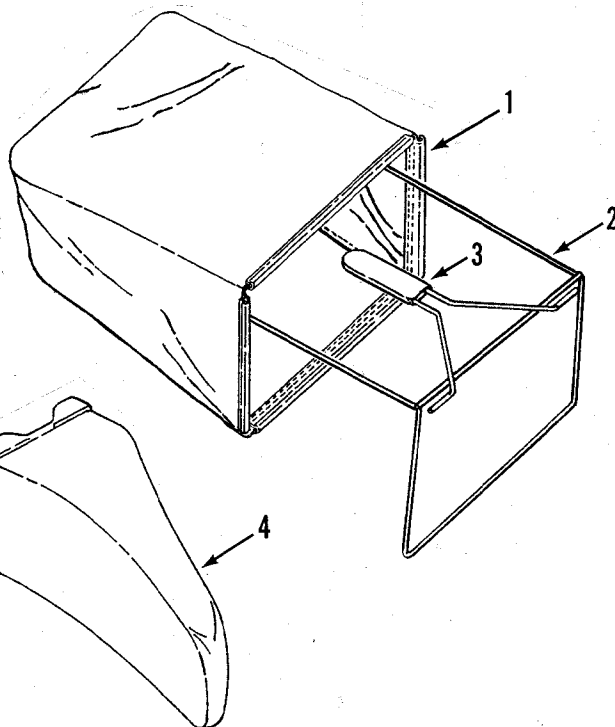
1	5-3898	AXLE/TRANSMISSION ASSEMBLY (Includes items 2 thru 19 & 24 thru 28)
2	2-8813	ASSEMBLY, Transmission
3	4-1738	ASSEMBLY, Rear Axle Weldment
4	2-4573	SHIELD, Dust (2)
5	2-4749	PIN, Pawl, 3/16 O.D. (2)
6	2-4549	PINION, Right Hand Drive
7	2-4550	PINION, Left Hand Drive
8	1-4341	RING, Retaining (4)
9	2-6479	SEAL, Pinion (Felt) (2)
10	2-6478	RETAINER, Pinion Seal (2)
11	2-4879	WASHER, Felt
12	2-5066	ASSEMBLY, Bearing Carrier (2)
13	2-4715	BUSHING, Rear Axle (2)
14	2-4748	TUBING, 5/8" I.D., Convolute
15	9-0361	SCREW, 5/16-18 x 5/8" Hex Washer Head, Self-Tapping (2)
16	3-5325	BRACKET, Transmission
17	9-1187	NUT, M10-1.50 Hex Nyloc
18	2-9494	PULLEY, Transmission
19	9-1084	SCREW, 1/4-20 x 3/8" Hex Washer Head, Self-Tapping (4)
20	9-1194	WASHER, 17/32 I.D. x 1-1/5" O.D. (2)
21	2-3657	KNOB, Height Adjusting Lever
22	9-0844	ROLL-PIN, 3/16 x 3/4"
23	2-9395	SPRING, Transmission Extension
24	3-4776	HANDLE, Height Adjustment
25	2-8926	SPACER
26	2-8888	SPRING, Return
27	9-0505	SCREW, 1/4-20 x 2" Hex Head Cap, Grade 5
28	7-6978	NUT, 1/4-20 Hex Nyloc
29	9-1075	SCREW, #10-24 x 5/8" Slotted Hex Washer Head, Self-Tapping
30	3-5541	ARM, Shift
31	3-5540	LEVER, Transmission
32	9-1267	NUT, #10-24 Hex Center Lock

## ACCESSORIES

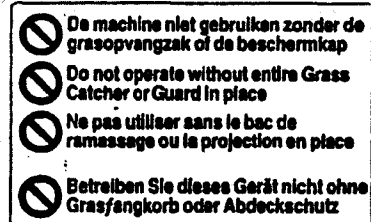
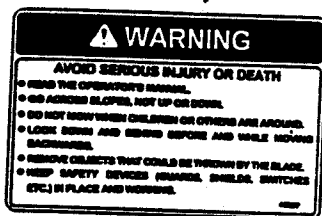
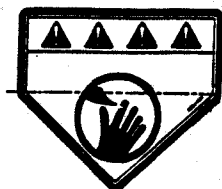
	ITEM	PART NO.	DESCRIPTION
GRASS CATCHER PARTS	1	2-8820	Grass Catcher
	2	5-3176	Grass Catcher Frame
	3	2-6421	Grip

MULCHING PARTS	4	2-6390	Mulching Plug
----------------	---	--------	---------------

DISCHARGING PARTS	5	2-6714	Side Discharge Chute (Includes WARNING Decal P.N. 1-3010)
-------------------	---	--------	---



# PARTS IDENTIFICATION

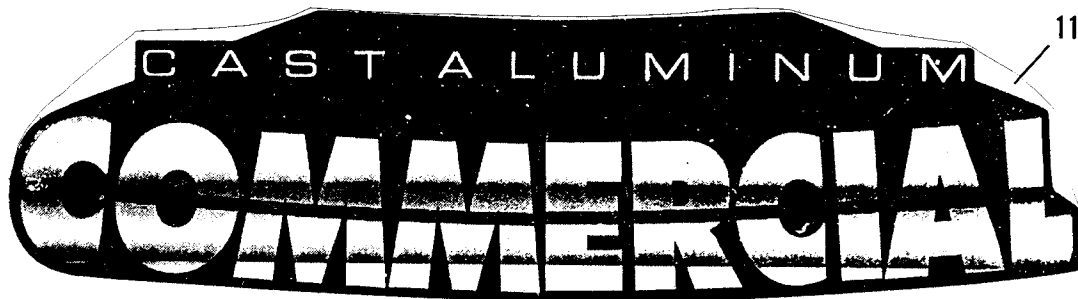
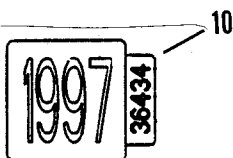
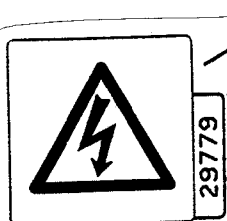


6

This Product may be covered by  
one or more of the following  
patents:

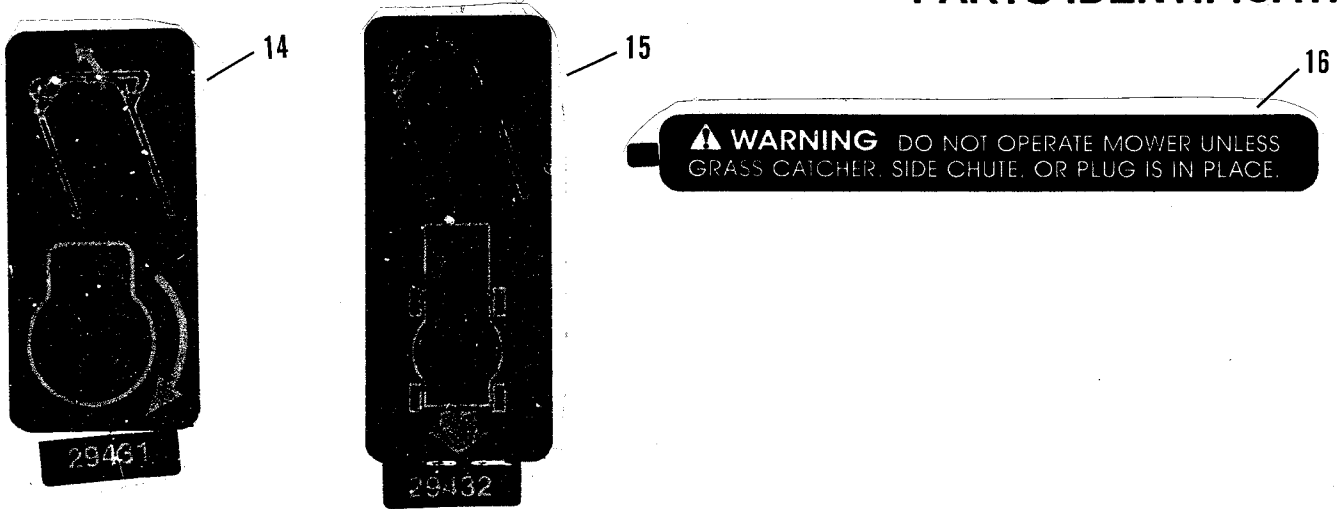
4,158,279	4,164,112
4,189,903	4,248,034
4,430,848	4,498,552
4,920,733	4,936,886
4,989,400	5,042,241
5,146,735	5,195,308
5,297,379	5,303,534
5,353,581	5,488,818
5,526,635	0358,400
	5,601,512

Other Patents Pending. 29478





## PARTS IDENTIFICATION



ITEM	PART NO.	DESCRIPTION
1	2-8440	DECAL - WARNING (Deck)
2	2-2841	DECAL - WARNING (Deck) (European Models Only)
3	1-3010	DECAL - DANGER
4	4-6357	DECAL, Warning
5	2-9784	DECAL - DANGER (European Models ELP21550KWV, ELP21600)
6	2-9470	DECAL, Patent Numbers
7	2-9779	DECAL, Spark Plug (European Model ELP21500KWV)
8	2-9776	DECAL, European Community (European Models)
9	2-3009	DECAL, Noise Control (European Models)
10	3-6434	DECAL, 1997 Year of Manufacture
11	2-9428	DECAL, Deck
12	2-9429	DECAL, Deck
13	2-9430	DECAL, 6.5 Engine
14	2-9431	DECAL, OPC
15	2-9432	DECAL, Ground Drive
16	3-5857	DECAL, Warning

*Parts Manual for*

**SNAPPER®**

**21" SERIES 0 COMMERCIAL**

**REAR DISCHARGE**

**WALK BEHIND**

**MOWER**

**MODELS**

**CLP21650RV**

**ECLP21650RV**

**SNAPPER®** McDonough, GA., 30253 U.S.A.