

Parts Manual for
SNAPPER®

**21" ALUMINUM DECK
WALK BEHIND MOWER
COMMERCIAL
SERIES 1**



MODEL
ECLP21601RV
ECLP21551HV

IT IS THE POLICY OF SNAPPER TO IMPROVE ITS PRODUCTS WHENEVER IT IS POSSIBLE AND PRACTICAL TO DO SO. WE RESERVE THE RIGHT TO MAKE CHANGES OR ADD IMPROVEMENTS AT ANY TIME WITHOUT INCURRING ANY OBLIGATION TO MAKE SUCH CHANGES ON PRODUCTS MANUFACTURED PREVIOUSLY.

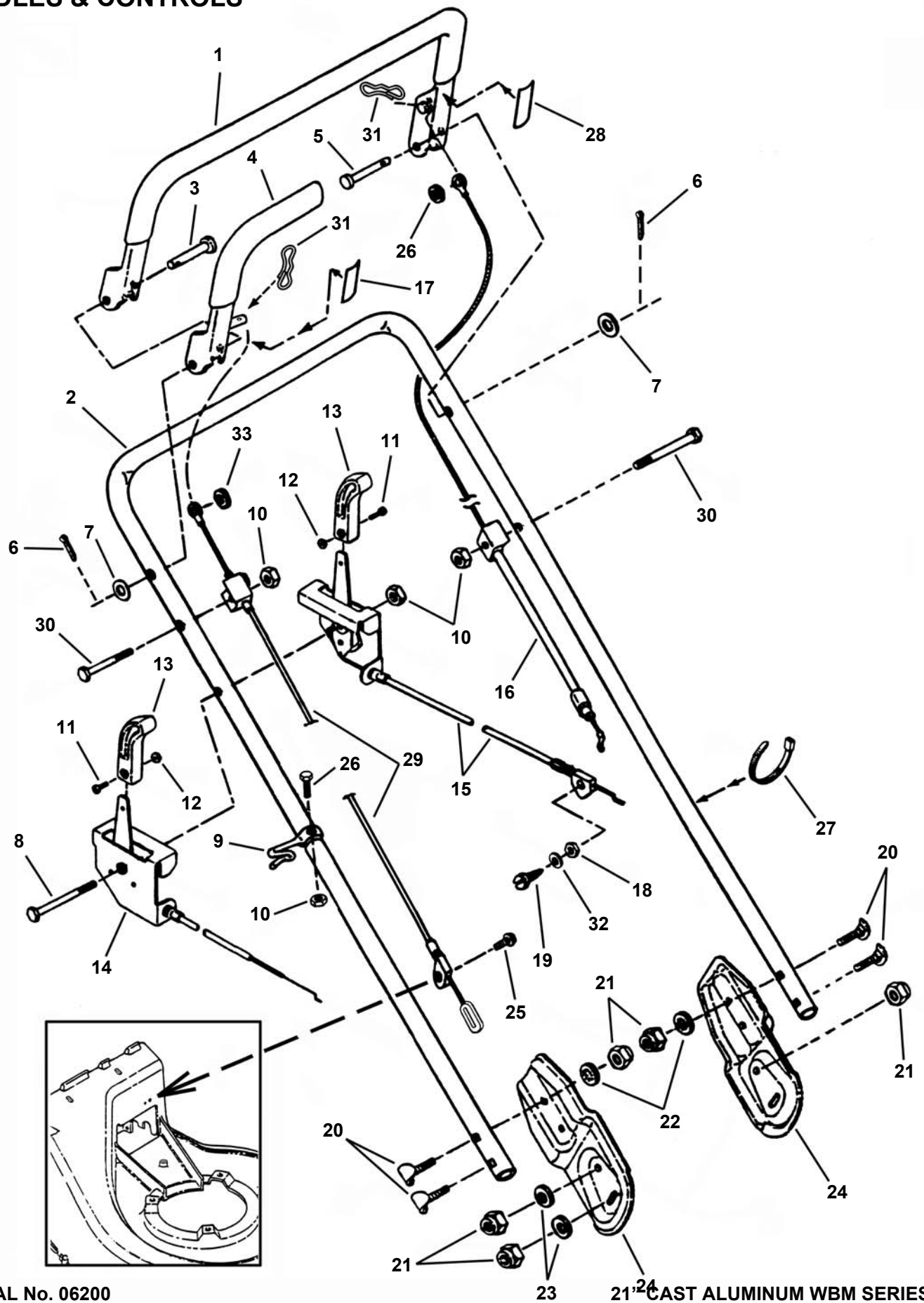
COPYRIGHT © 2003
SNAPPER PRODUCTS INC.
ALL RIGHTS RESERVED

SNAPPER® McDonough, GA., 30253 U.S.A.

(REV. 4, 06/04/03)

MANUAL No. 06200

HANDLES & CONTROLS



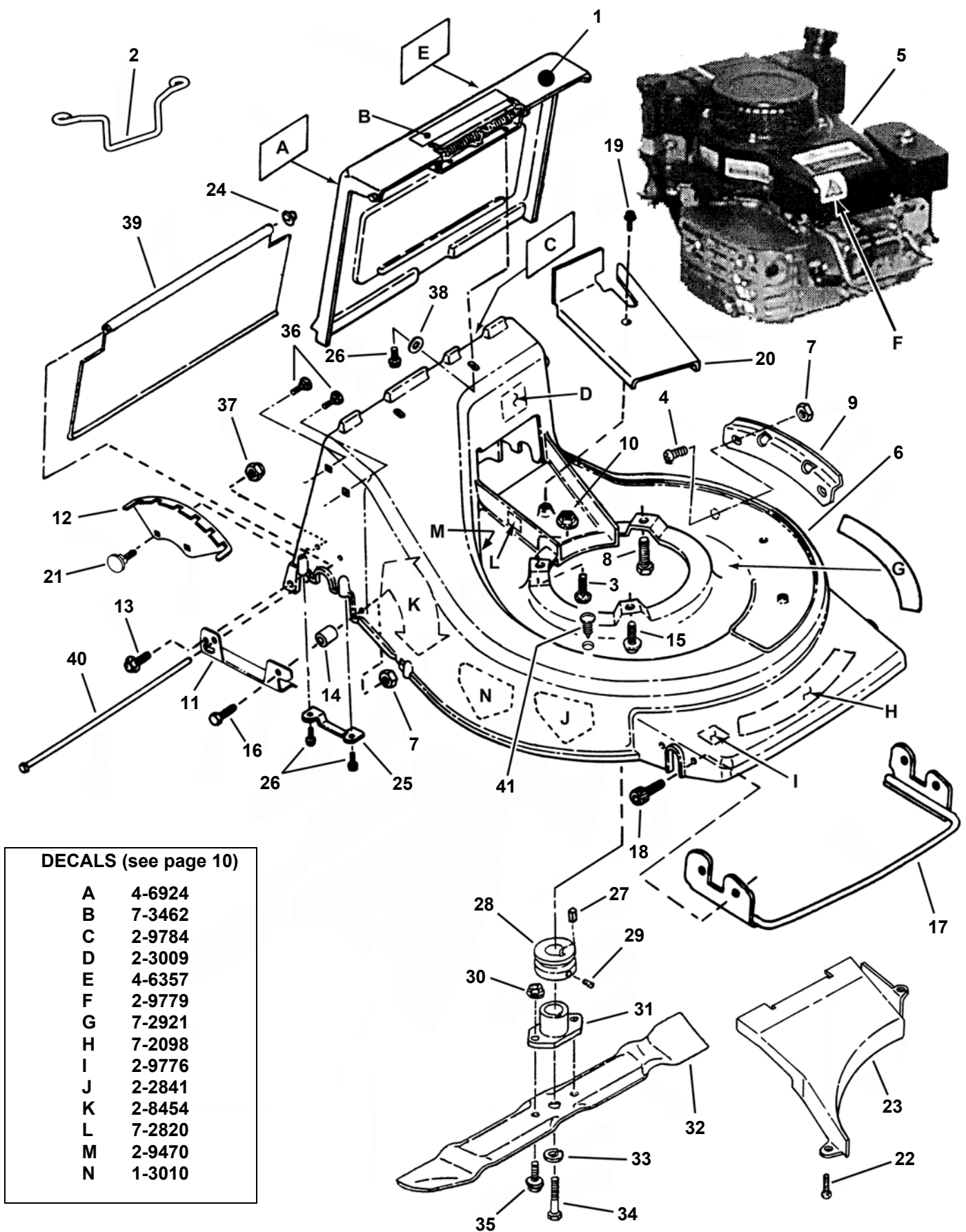
MANUAL No. 06200

21 CAST ALUMINUM WBM SERIES 1

HANDLES & CONTROLS

ITEM	PART NO.	DESCRIPTION
1	2-8933	CONTROL, Blade/Engine
2	3-4786	HANDLE, Upper
3	9-1644	PIN, 5/16 x 1-23/32" Clevis
4	2-8815	CONTROL, Wheel Drive
5	9-1645	PIN, 5/16 x 1-7/16" Clevis
6	9-0555	COTTER-PIN, 3/32 x 1/2" (2)
7	9-1076	WASHER, 5/16" Flat (2)
8	9-1251	SCREW, 1/4-20 x 2-1/2" Hex Head Cap, Grade 5
9	2-2779	GUIDE, Pull Rope
10	7-6978	NUT, 1/4-20 Hex Nyloc (4)
11	9-1017	SCREW, #8-32 x 3/8" Fillister Head (2)
12	9-1018	NUT, #8-32 Hex (2)
13	2-3655	KNOB, Engine Speed Control & Ground Speed Control (2)
14	2-8887	CONTROL, Engine Speed (Robin 6HP engine)
--	2-9083	CONTROL, Engine Speed (Honda 5-1/2 HP engine)
15	2-8886	CONTROL, Ground Speed
16	4-6524	CABLE, Blade/Engine Control (Robin engine)
--	7-5224	CABLE, Blade/Engine Control (Honda engine)
17	2-9432	DECAL, Ground Drive
18	9-1267	NUT, #10-24 Hex Center Lock
19	9-1941	SCREW, #10-24 x 3/4" Pan Head Machine
20	9-1190	BOLT, 5/16-18 x 1-1/2" Curved Head Carriage (4)
21	9-1298	NUT, 5/16-18 Hex Nyloc (8)
22	9-0391	WASHER, 5/16" Internal Tooth Lock (4)
23	9-0188	WASHER, 11/32" Flat (4)
24	3-4848	BRACKET, Handlebar (2)
25	9-1075	SCREW, #10-24 x 5/8" Slotted Hex Washer Head, Self-Tap
26	7-9577	SCREW, 1/4-20 x 1-1/2" Hex Head Cap, Grade 5
27	2-4641	TIE, Wire (4)
28	2-9431	DECAL, Operator Presence Control
29	4-6518	CABLE, Wheel Drive Control
30	9-0505	SCREW, 1/4-20 x 2" Hex Head Cap, Grade 5 (2)
31	7-3821	COTTER PIN, Bow-Tie Locking (2)
32	9-1552	WASHER, 7/32" Flat
33	9-1702	WASHER, 3/16 Flat (2)

CUTTING DECK, BLADE



DECALS (see page 10)

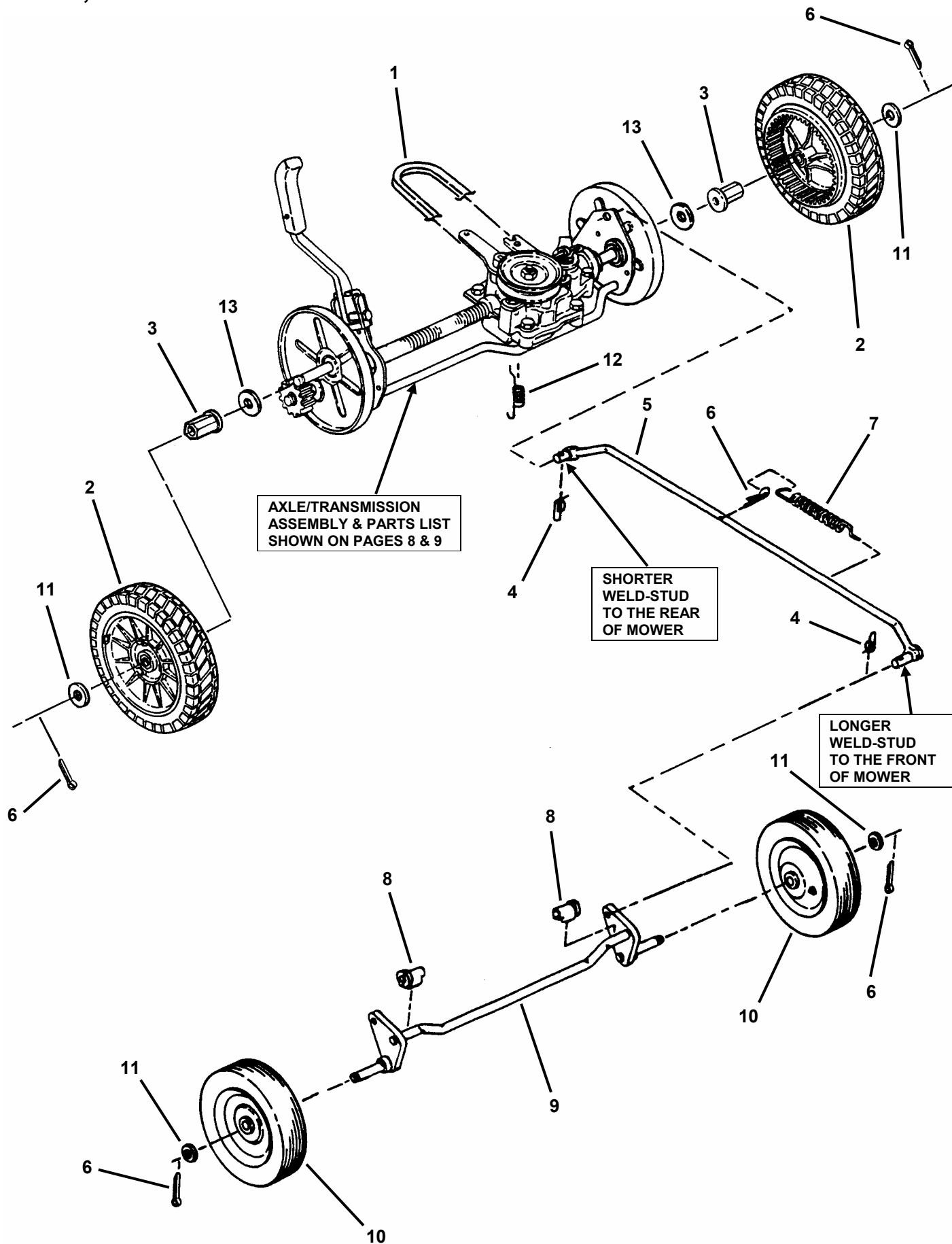
A	4-6924
B	7-3462
C	2-9784
D	2-3009
E	4-6357
F	2-9779
G	7-2921
H	7-2098
I	2-9776
J	2-2841
K	2-8454
L	7-2820
M	2-9470
N	1-3010

CUTTING DECK, BLADE

ITEM	PART NO.	DESCRIPTION
1	5-2881	ASSEMBLY, Discharge Door (Commercial)
2	7-2143	GUIDE, Belt
3	9-0700	BOLT, 5/16-18 x 1-1/2" Hex Flange Lock, Grade 5
4	9-1696	SCREW, 1/4-20 x 5/8" Phillips Truss Head Machine Screw (4)
5	**	ENGINE, Robin 6.0 HP Model - EH18V
--	**	ENGINE, Honda 5.5HP Commercial, Model GXV160, Type K1A1ASE
6	6-1962	DECK, 21" Cast Aluminum Short (Red)
7	9-1603	NUT, 1/4-20 Hex Nyloc (6)
8	9-0324	SCREW, 3/8-16 x 1" Hex Washer Face Self-Tapping
9	3-4734	GUARD, Wear (2)
10	9-0585	NUT, 5/16-18 Hex Flange Lock, Grade 5
11	4-2999	BRACKET, R.H. Stiffener
--	4-3790	BRACKET, L.H. Stiffener (not shown)
12	3-4692	PLATE, Height Adjustment
13	9-1819	SCREW, 1/4-20 x 5/8" Hex Washer Face Self-Tapping (2)
14	4-2988	SPACER, Stiffener (2)
15	9-0595	BOLT, 5/16-18 x 3/4" Hex Flange Lock, Grade 5
16	2-7230	SCREW, 1/4-20 x 1" Hex Head Cap, Grade 5 (2)
17	4-1736	SUPPORT, Front Bumper
18	9-0999	SCREW, 1/4-20 x 5/8" Truss Head (Torx) (4)
19	9-1201	SCREW, #10-24 x 1-1/2" Slotted Hex Washer Head, Self-Tapping
20	4-6506	COVER, Ground Speed Drive Belt
21	9-1711	BOLT, #10-24 x 5/8" Flat Head Carriage (2)
22	9-1075	SCREW, #10-24 x 5/8" Slotted Hex Washer Head, Self-Tapping (4)
23	4-1750	WELDMENT, Baffle
24	9-1892	NUT, 1/4" Push
25	3-3732	SUPPORT, Rear Axle (2)
26	9-0362	SCREW, 1/4-20 x 5/8" Hex Washer Head, Self-Tapping (6)
27	1-6755	KEY, 1/4" Square x 3/4" (for Robin engine) (2)
--	1-0783	KEY, #505 Hi-Pro (for Honda engine)
28	2-2106	PULLEY, Traction Drive (for Robin engine)
--	2-1822	PULLEY, Traction Drive (for Honda engine)
29	9-0201	SCREW, 5/16-18 x 5/16" Hex Socket Set
30	7-6979	NUT, 3/8-16 Hex Nyloc (2)
31	2-6631	HUB, Blade Drive, 25mm I.D. (for Robin engine)
--	2-6630	HUB, Blade Drive, 7/8" I.D. (for Honda engine)
32	2-6428	BLADE, 21" Bagging
33	7-9268	WASHER, 3/8 Split Lock (Heavy)
34	9-0483	SCREW, 3/8-24 x 1-3/4" Hex Cap, Grade 5
35	9-0143	BOLT, 3/8-16 x 1-1/4" Hex Flange Lock (2)
36	9-1714	BOLT, 5/16-18 x 1" Round Head Carriage, Grade 5 (4)
37	9-1267	NUT, #10-24 Hex Center Lock (2)
38	9-0055	WASHER, 1/4 Flat (2)
39	4-3870	SHIELD, Trailing
40	4-3808	ROD, Trailing Shield Pivot (1/4" Diameter)
41	7-3293	PLUG, Hole (Polyethylene)

****PURCHASE ENGINE & ENGINE PARTS FROM ENGINE SERVICE OUTLETS.**

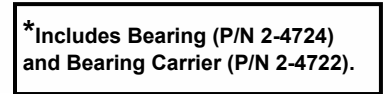
WHEELS, FRONT & REAR



WHEELS, FRONT & REAR

ITEM	PART NO.	DESCRIPTION
1	2-9492	BELT, Traction Drive
2	7-4630	WHEEL, 9.0 x 2.0 (Rear Drive) (Includes item 3) (2)
3	7-3618	BUSHING, Wheel (2)
4	9-1593	COTTER-PIN, 3/8" Self Locking (2)
5	4-1744	WELDMENT, Tie Bar
6	9-1598	COTTER-PIN, 1/8" x 3/4" (6)
7	2-4751	SPRING, Tie Bar
8	2-4558	BUSHING, Front Axle (2)
9	4-1739	WELDMENT, Front Axle
10	4-2814	WHEEL, 8.0 x 2.0 (Front) (2)
11	9-1733	WASHER, 1/2" Flat (4)
12	4-6522	SPRING, Clutch (also shown on pages 8 & 9)
13	9-1194	WASHER, 17/32" (2) (also shown on pages 8 & 9)

TRANSMISSION

**MANUAL No. 06200**

21" CAST ALUMINUM WBM SERIES 1

TRANSMISSION

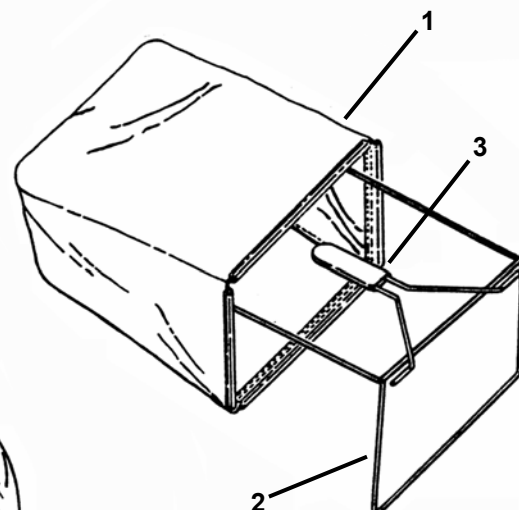
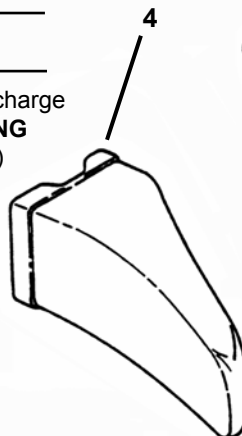
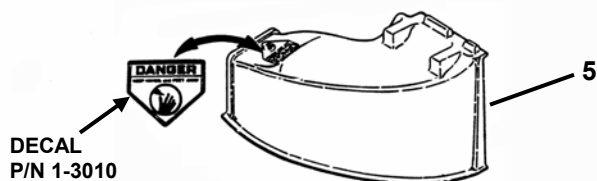
ITEM	PART NO.	DESCRIPTION
1	5-3898	AXLE/TRANSMISSION ASSEMBLY (Includes items 2 thru 19 & 24 thru 28)
2	2-8813	ASSEMBLY, Transmission 3-Speed Commercial
3	4-1738	WELDMENT, Rear Axle
4	2-4573	SHIELD, Dust (2)
5	2-4749	PIN, Pawl, 3/16 O.D. (2)
6	2-4549	PINION, Right Hand Drive
7	2-4550	PINION, Left Hand Drive
8	1-4341	RING, Retaining (4)
9	2-6479	SEAL, Pinion (Felt) (2)
10	2-6478	RETAINER, Pinion Seal (2)
11	2-4879	WASHER, Felt
12	2-5066	ASSEMBLY, Bearing Carrier (2)
13	2-4715	BUSHING, Rear Axle (2)
14	2-4748	TUBING, 5/8" I.D. Convolute
15	9-0361	SCREW, 5/16-18 x 5/8" Hex Washer Head, Self-Tapping (2)
16	3-5325	BRACKET, Transmission
17	9-1187	NUT, M10 x 1.50 Hex Nyloc
18	2-9494	PULLEY, Transmission
19	9-1084	SCREW, 1/4-20 x 3/8" Hex Washer Head, Self-Tapping (4)
20	9-1194	WASHER, 17/32 I.D. x 1-1/2" O.D. (2)
21	2-3657	KNOB, Height Adjusting Lever
22	9-0844	PIN, 3/16 x 3/4" Roll
23	4-6522	SPRING, Clutch
24	3-4776	HANDLE, Height Adjustment
25	2-8926	SPACER
26	2-8888	SPRING, Return
27	9-0505	SCREW, 1/4-20 x 2" Hex Head Cap, Grade 5
28	7-6978	NUT, 1/4-20 Hex Nyloc
29	9-1075	SCREW, #10-24 x 5/8" Slotted Hex Washer Head, Self Tapping
30	3-5541	ARM, Shift
31	3-5540	LEVER, Transmission
32	9-1267	NUT, #10-24 Hex Center Lock

ACCESSORIES

	ITEM	PART NO.	DESCRIPTION
GRASS CATCHER PARTS	1	4-5199	GRASS CATCHER, Snapper
	2	5-3176	Cast Deck Commercial
	3	2-6421	FRAME, Grass Catcher

MULCHING PARTS	4	2-6390	PLUG, Mulching
-----------------------	---	--------	----------------

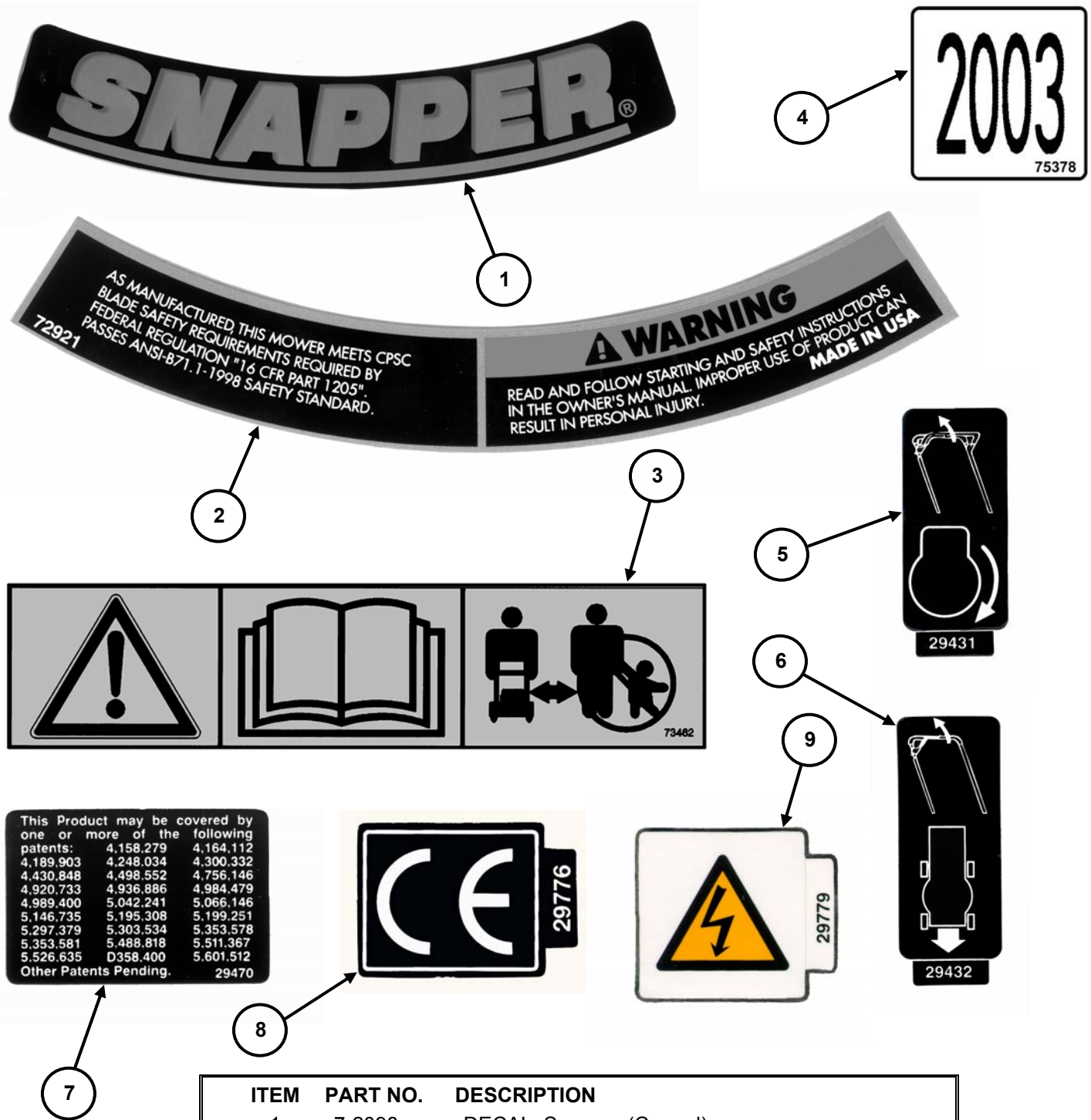
DISCHARGING PARTS	5	2-6714	CHUTE, Side Discharge (Includes WARNING Decal P/N 1-3010)
--------------------------	---	--------	---



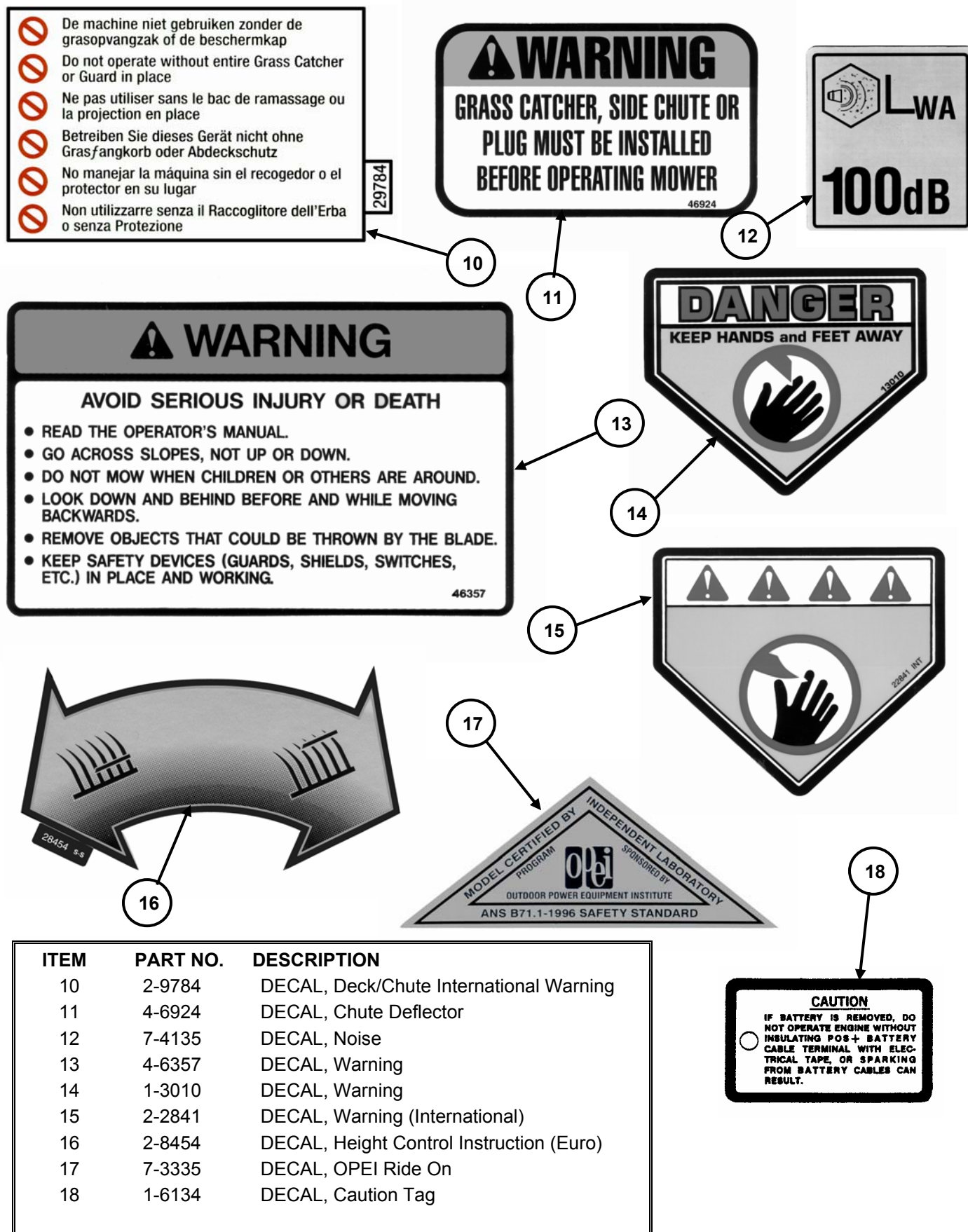
21" CAST ALUMINUM WBM SERIES 1

MANUAL No. 06200

DECALS



ITEM	PART NO.	DESCRIPTION
1	7-2098	DECAL, Snapper (Curved)
2	7-2921	DECAL, Warning (Deck)
3	7-3462	DECAL, Caution Symbols
4	7-4548	DECAL, 2002 Year of Manufacture
—	7-5378	DECAL, 2003 Year of Manufacture
5	2-9431	DECAL, Operator Presence Control
6	2-9432	DECAL, Ground Drive
7	2-9470	DECAL, Patent Numbers
8	2-9776	DECAL, Euro Community (CE)
9	2-9779	DECAL, Spark Plug International Symbol



Parts Manual for

SNAPPER®

***21" ALUMINUM DECK
WALK BEHIND MOWER
COMMERCIAL
SERIES 1***

SNAPPER® McDonough, GA., 30253 U.S.A.

COPYRIGHT © 2003
SNAPPER PRODUCTS INC.
ALL RIGHTS RESERVED

MANUAL No. 06200

(REV. 4, 06/04/03)

Printed in U.S.A.