

# Installation Instructions

## Hitch & Tube Group

Mfg. No./Part No. 1694546

For Landlord / 2700 / 1700 / LT Series Lawn Tractors  
For Broadmoor / 2600 / 1600 / LT Series Lawn Tractors

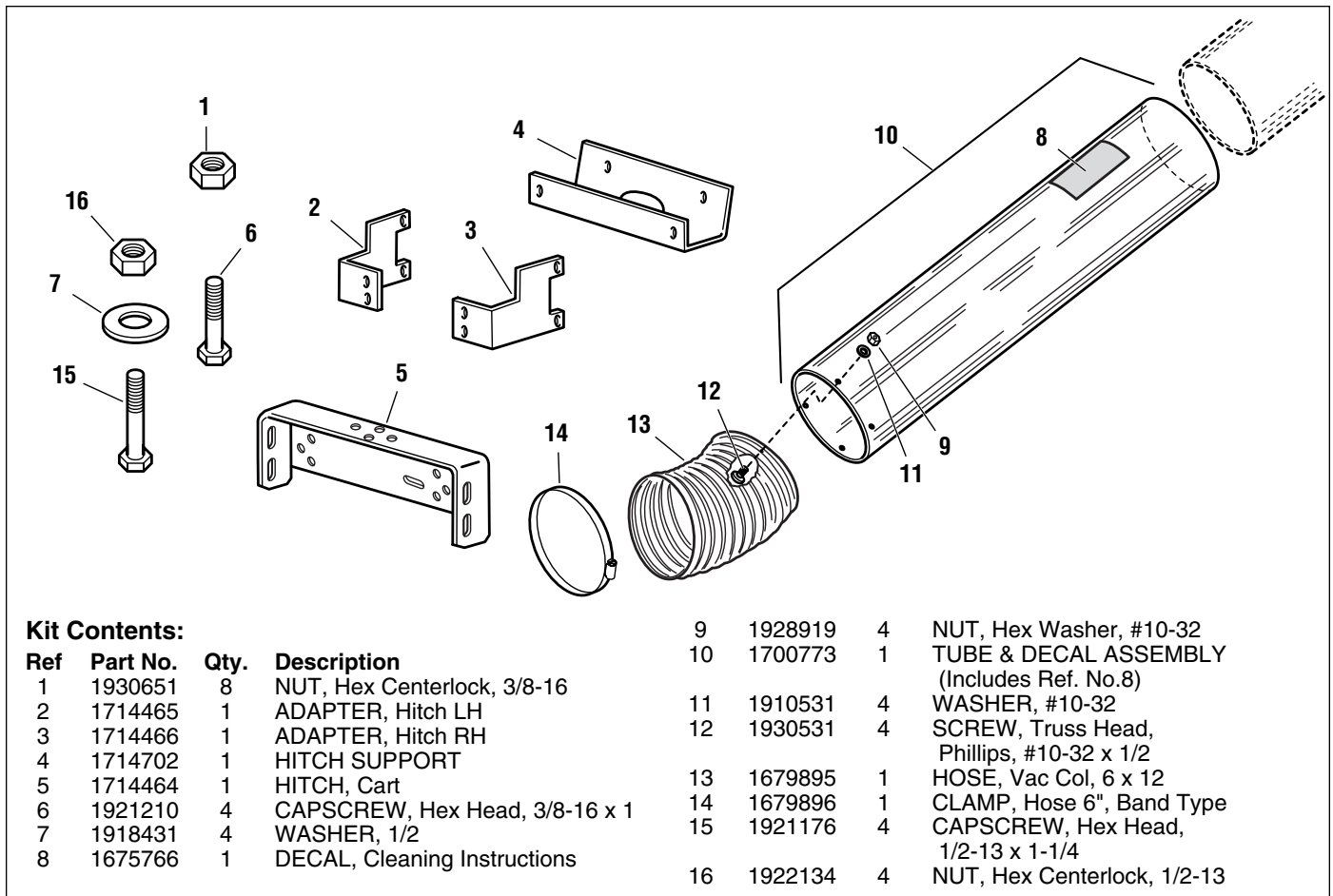


Figure 1. Contents

### WARNING

Before beginning any service work turn off the PTO, set the parking brake, turn off the ignition, and disconnect the spark plug wire(s).

## HITCH INSTALLATION

### Broadmoor / 1600 / 2600 Series

*NOTE: Do not tighten hardware until all components are installed.*

1. Attach the hitch adapters (B, C, Figure 2) to the rear sides of the frame and secure with 3/8-16 x 3/4 cap-screws (D) and locknuts. It may be necessary to elevate the rear of the unit to access the upper cap-screws.
2. Attach the hitch bracket (A) to the hitch adapters (B, C) using four 3/8-16 x 3/4 cap-screws and locknuts (E).

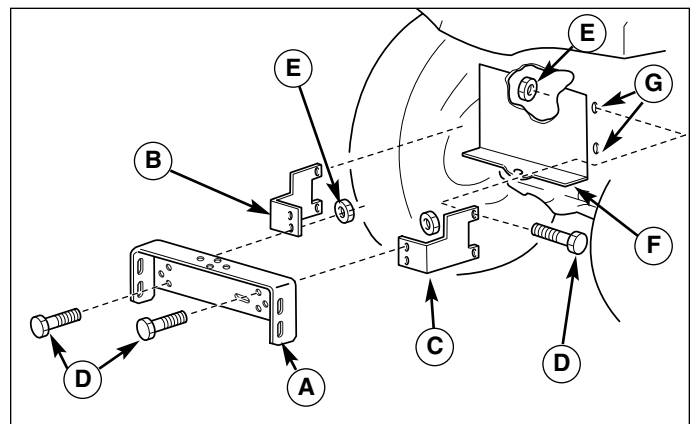


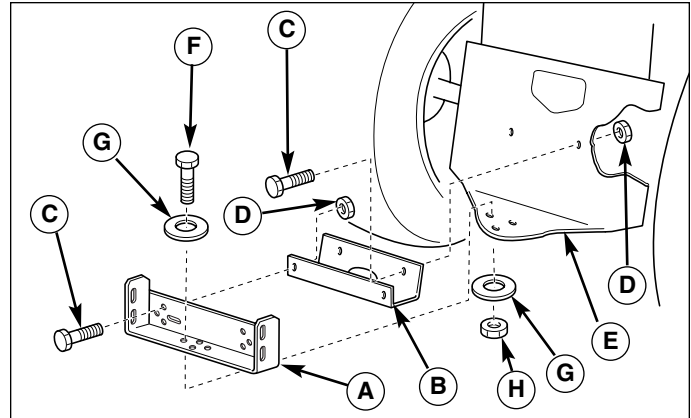
Figure 2. Hitch Assembly - Broadmoor

- |                          |                    |
|--------------------------|--------------------|
| A. Hitch Bracket         | E. Locknut, 3/8-16 |
| B. Hitch Adapter, Left   | F. Drawbar         |
| C. Hitch Adapter, Right  | G. Drawbar Frame   |
| D. Capcrew, 3/8-16 x 3/4 |                    |

## Landlord / 1700 / 2700 Series

*NOTE: Do not tighten hardware until all components are installed.*

1. Mount the hitch support (B, Figure 3) to the rear of the tractor using 3/8-16 x 1 capscrews and locknuts.
2. Secure the hitch bracket (A) to the hitch support (B) using 3/8-16 x 1 capscrews and locknuts.
3. Secure the hitch bracket (A) to the drawbar (E) using a 1/2-13 x 1-1/4 capscrew, washers (G), and locknut (H).
4. Tighten all hardware.



**Figure 3. Landlord Hitch Installation**

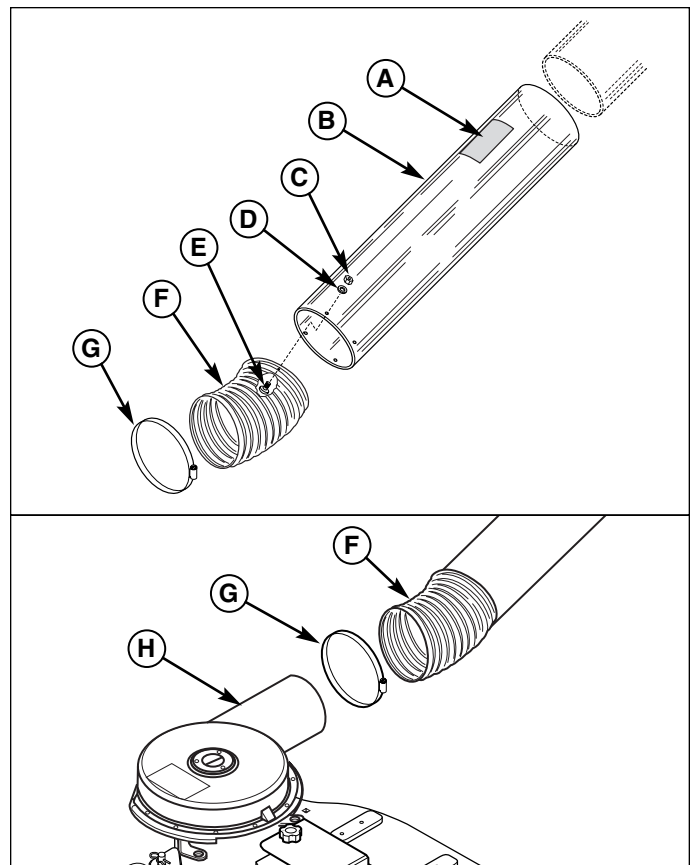
- |                                |                                    |
|--------------------------------|------------------------------------|
| <b>A. Hitch Bracket</b>        | <b>E. Drawbar</b>                  |
| <b>B. Hitch Support</b>        | <b>F. Capscrew, 1/2-13 x 1-1/4</b> |
| <b>C. Capscrew, 3/8-16 x 1</b> | <b>G. Flat washer, 1/2</b>         |
| <b>D. Locknut, 3/8-16</b>      | <b>H. Locknut, 1/2-13</b>          |

## DISCHARGE TUBE ASSEMBLY

1. Connect the flexible hose (F, Figure 4) and clear plastic discharge tube (B). The two should overlap by approximately 2".
2. Secure the tubes using truss head screws (E), washers (D), and locknuts (C). Insert the screws from the inside out and poke them through the flexible hose.
3. Insert the upper end of the clear tube into the cart sleeve. Slide the flex hose (F) over the turbo (H) and secure with the large hose clamp (G). The hose should overlap the turbo discharge by 2"-3".

The clamp screw should be positioned to the inside as shown to prevent accidental impact and removal of the clamp.

Check that the upper end of the clear tube (B, Figure 4) is not contacting the top of the collector cover. If necessary, cut off the clear tube flush with the sleeve (See Wide Body Cart Operators Manual).



**Figure 4. Discharge Tube Installation**

- |                          |                            |
|--------------------------|----------------------------|
| <b>A. Decal</b>          | <b>E. Truss Head Screw</b> |
| <b>B. Discharge Tube</b> | <b>F. Hose</b>             |
| <b>C. Locknut, Hose</b>  | <b>G. Clamp</b>            |
| <b>D. Washer</b>         | <b>H. Turbo Discharge</b>  |

**Simplicity**

MANUFACTURING, INC.

500 N Spring Street / PO Box 997  
Port Washington, WI 53074-0997 USA

Form No. 1726331-00

Rev. 12/2003

© 2003 Simplicity Manufacturing, Inc. All Rights Reserved

TP 200-4006-00-AT-SMA