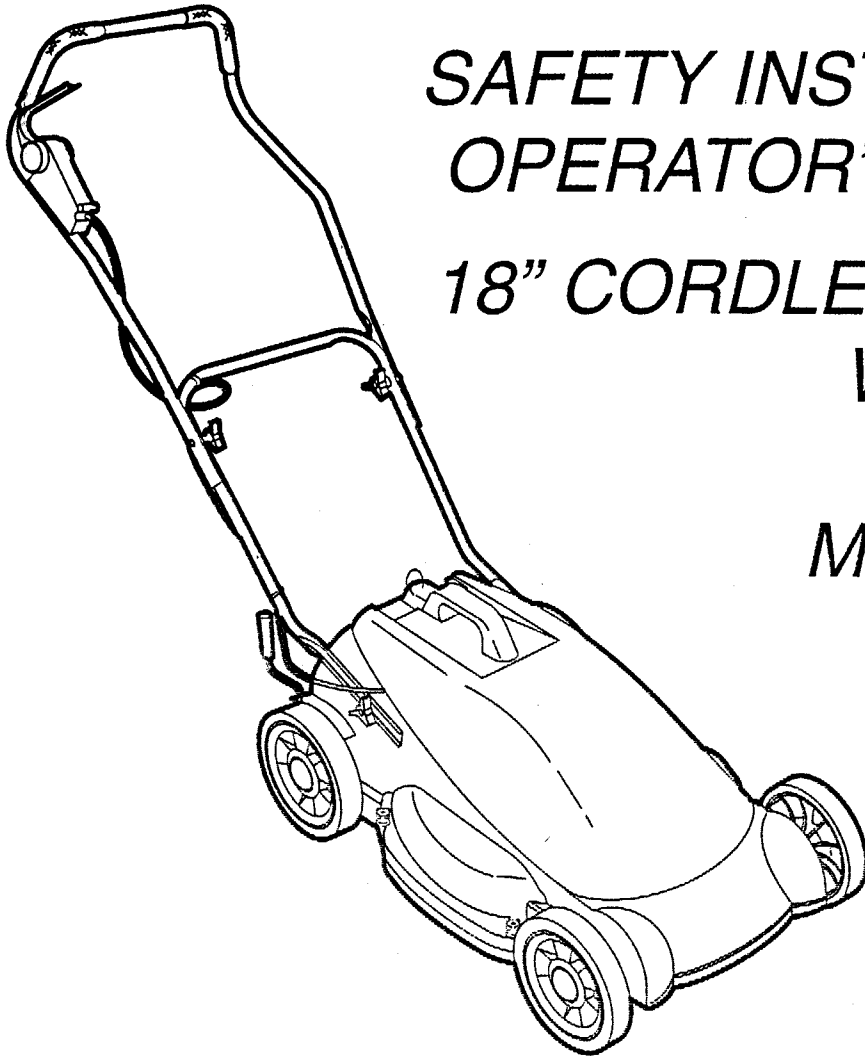




SNAPPER

"LEGENDARY QUALITY"



*SAFETY INSTRUCTIONS &
OPERATOR'S MANUAL for
18" CORDLESS ELECTRIC
WALK BEHIND
MOWER
MODEL BP1800*

MODEL IDENTIFICATION

MODEL BP1800: 18" Cordless Electric Walk Behind Mower with Rechargeable Battery Pack

Thank you for buying a Snapper Product! Before operating your power equipment, read this manual carefully and pay particular attention to the "IMPORTANT SAFETY INSTRUCTIONS" on page 2. Remember that all power equipment can be dangerous if used improperly and keep in mind that safety requires careful use in accordance with the operating instructions and common sense!

IMPORTANT SAFETY INSTRUCTIONS



WARNING: When using electric lawn mowers, basic safety precautions should always be followed to reduce the risk of fire, electric shock and personal injury. Failure to comply with the following instructions may result in serious injury to the operator or other persons. The owner of the mower must understand these instructions and, furthermore, must allow only persons who understand these instructions to operate the mower. Each person operating the mower must be of sound mind and body and must not be under the influence of any substance which might impair vision, dexterity or judgment. If you have any questions pertaining to your mower which your dealer cannot answer to your satisfaction, call or write the Customer Service Department at SNAPPER, McDonough, Georgia 30253. Phone: 770-954-2500.

READ THESE INSTRUCTIONS

PROTECTION FOR CHILDREN

1. DO NOT allow children in area when mower is being operated.
2. DO NOT allow pre-teenage children to operate mower.
3. Allow only responsible teenagers with mature judgment to operate mower and only under close supervision.
4. Keep the area clear of all persons, particularly small children and pets.

PREPARATION

1. Never operate mower without proper guards, plates, safety switches or other safety protective devices in place and properly connected. Inspect to determine that these safety devices are installed properly, are in good repair and operate properly. If the condition or operation of these devices is questionable, they must be repaired or replaced before using the mower. Be thoroughly familiar with the controls and proper use of the equipment.
2. Objects struck by the lawn mower blade can cause severe injuries to persons. Thoroughly inspect the area where the mower is to be used and remove all stones, sticks, wire, bones and other foreign objects which could be thrown by mower blade. Also note the location of holes, stumps and other possible hazards.
3. DO NOT operate mower when barefoot or wearing open sandals. Always wear substantial footwear and long pants. Dress Properly – DO NOT wear loose clothing or jewelry. They can get caught in moving parts.
4. When mowing over rough ground or in tall grass, mower must be set at highest cutting position.
5. Mow only in daylight or in good artificial light.
6. Avoid Dangerous Environment. Never operate mower in wet grass or in rain. DO NOT Overreach – Always be sure of your footing and maintain your balance; keep a firm hold on the handle and walk, never run!
7. DO NOT operate mower without the proper side chute or mulch cover in place. Use of accessories not recommended in the manual may increase the risk of injury.
8. Use Right Appliance – DO NOT use this lawn mower for any job except that for which it is intended.
9. Use Safety Glasses – Always use face or dust mask if operation is dusty.
10. Never attempt to make a wheel height adjustment while the motor is running.

OPERATION

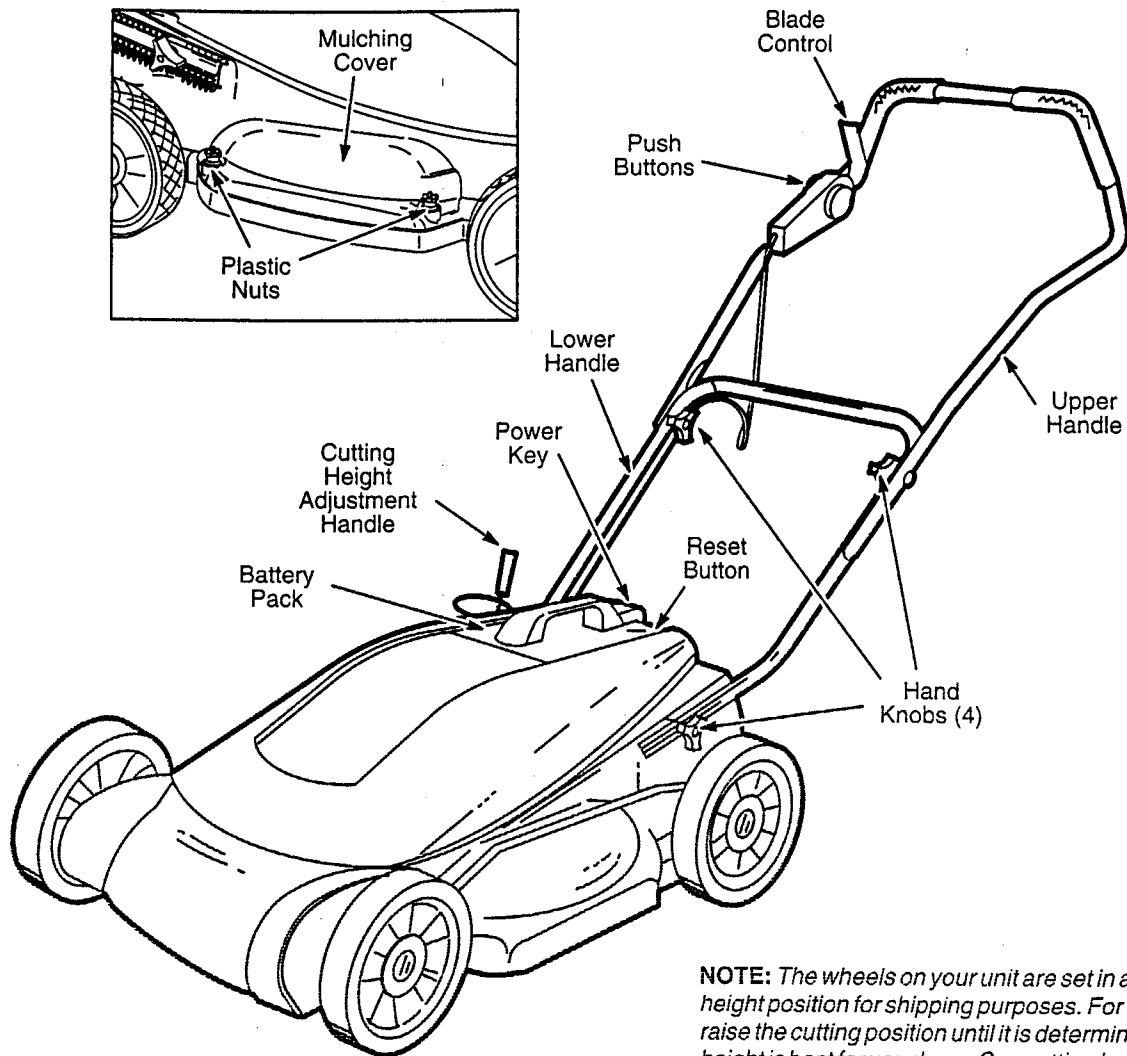
1. Look behind you before pulling the mower backwards to avoid falling.
2. Mow across slopes, never up and down. Exercise CAUTION when changing directions on slopes. DO NOT mow steep slopes or other areas where stability or traction is in doubt.
3. DO NOT put hands and feet near or under rotating parts. Keep clear of discharge area while motor is running.
4. Stop blade when crossing gravel drives, walks or roads and under conditions where thrown objects might be a hazard.

5. After striking a foreign object or if mower vibrates abnormally, stop the blade and remove battery pack. Inspect the mower for any damage and repair the damage before restarting and operating the lawn mower. Vibration is generally a warning of trouble.
6. Stop blade whenever you leave the operating position behind the handle for any reason, including clearing grass and making any adjustments, repairs or inspections.
7. Before cleaning, adjusting height of cut, exchanging mulching cover and side discharge chute, repairing or inspecting, remove battery pack and make certain blade has stopped.
8. DO NOT force lawn mower. It will do a better and safer job at a slower rate.
9. Stay Alert – Watch what you are doing. Use common sense. DO NOT operate lawn mower when you are tired.

MAINTENANCE AND STORAGE

1. Keep all nuts, bolts and screws tight, blade sharp and be sure mower is in safe operating condition. Follow instructions for changing accessories.
2. Store Idle Lawn Mower Indoors – When not in use, lawn mower should be stored in an indoor, dry and locked-up place – out of reach of children.
3. Keep mower handles dry and free from oil and grease.
4. To reduce fire hazard, keep mower free of grass, leaves or excessive grease.
5. DO NOT charge lawn mower batteries in rain or in wet locations.
6. DO NOT dispose of the batteries in a fire. Cells may explode. Check with local codes for possible special disposal instructions. Return used battery pack to an Authorized Briggs & Stratton Service Dealer, place of purchase, or a local recycling center.
7. DO NOT open or mutilate the batteries. Released electrolyte is corrosive and may cause damage to the eyes or skin. It may be toxic if swallowed.
8. Exercise care in handling batteries in order not to short the battery with conducting materials such as rings, bracelets and keys. The battery or conductor may overheat and cause burns.
9. DO NOT attempt to replace individual batteries inside the battery pack. Mixing fresh and discharged batteries could increase internal cell pressure and rupture the discharged battery. Improper wiring within the battery pack could result in leakage or explosion.
10. Use only identical Briggs and Stratton #497395 replacement battery pack.
11. Use identical replacement blades only. Check the blade and motor mounting bolts at frequent intervals for proper tightness.
12. Have your mower inspected and serviced each year by an authorized Snapper dealer. Determine if any additional devices are available which might upgrade the safety of your mower.
13. Factory specified Snapper replacement parts must be used to assure adequate protection against injury.

FAMILIARIZATION



NOTE: The wheels on your unit are set in a low cutting height position for shipping purposes. For best results, raise the cutting position until it is determined which height is best for your lawn. See cutting height adjustment.

Figure 1

INTRODUCTION

This manual has been prepared for the operators of the SNAPPER 18" CORDLESS ELECTRIC WALK BEHIND MOWER. Its purpose, aside from recommending operating and routine service requirements, is to promote safety through the use of accepted operating practices.

Read, Understand and Follow the "IMPORTANT SAFETY INSTRUCTIONS" on Page 2 of this manual and all safety messages on the mower and attachments before operating the mower.

NOMENCLATURE

The nomenclature drawing above, Figure 1, shows the essential parts of the SNAPPER 18" CORDLESS ELECTRIC WALK BEHIND MOWER. It is recommended that all operators of the mower become thoroughly familiar with the controls, parts and operation of the mower before operating. Study this manual before operating and keep it handy for future reference.

SET-UP INSTRUCTIONS

NOTE: Reference to right or left side of mower is made from operator's position.

HOW TO SET-UP YOUR LAWN MOWER

Refer to Illustration Below

1. Open the top flaps of the carton. Remove the carton inserts. Remove the loose parts, which include the side discharge chute, battery pack, battery charger, battery charger lead and power key.
2. Lift the mower from the carton or cut the corners of the carton and roll the mower out.
3. Pull up and back on the upper handle to raise the handle into the operating position. Remove the packing material between the upper and lower handles.
4. Tighten the four hand knobs on the sides of the lower and upper handles.

NOTE: Your mower is shipped with the handle in the middle height position. To raise or lower the handle, refer to the Adjustment Section of this manual.

IMPORTANT: Be certain to bring the battery to a full charge before operating your mower. Refer to Operating Instructions.

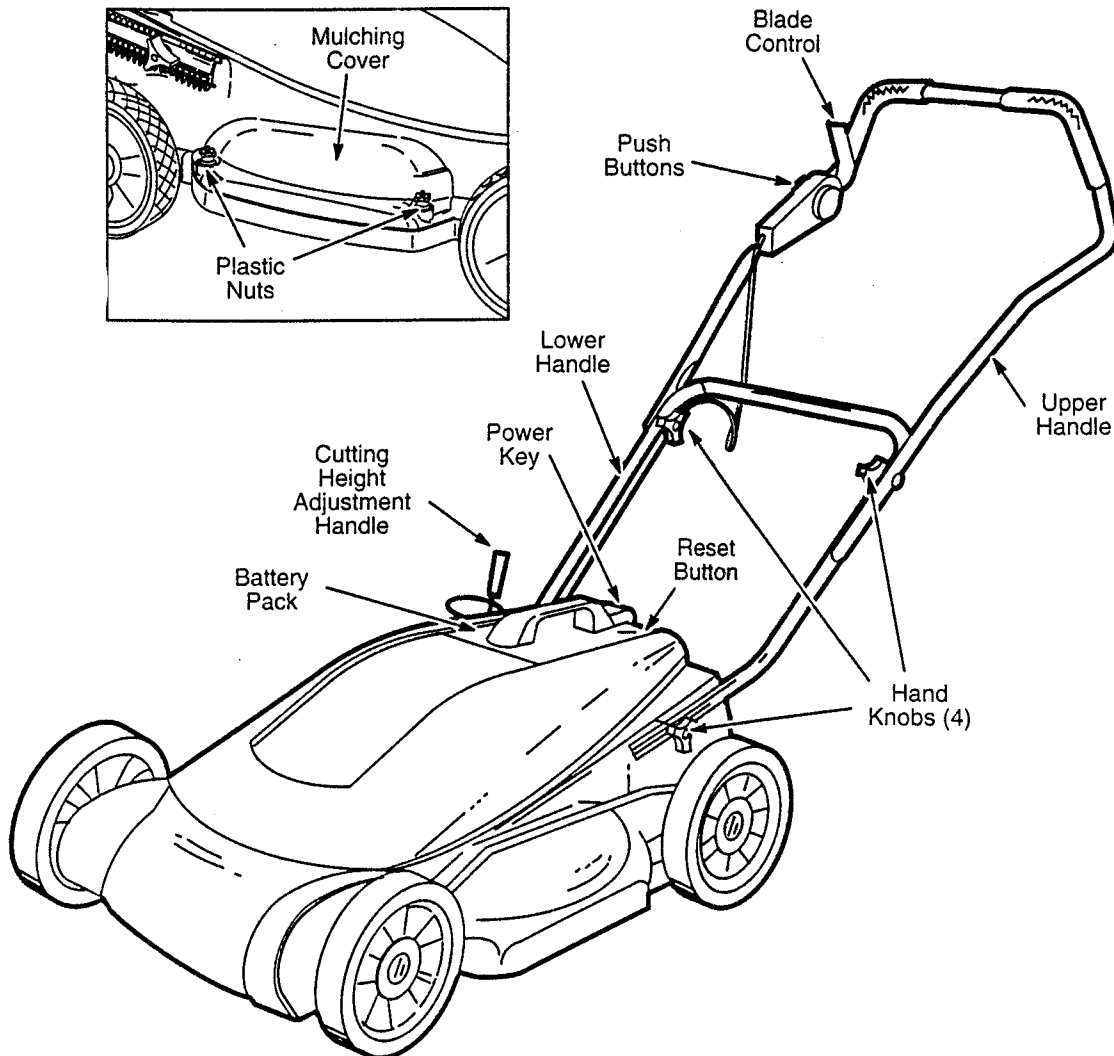
5. Place the battery pack into the opening provided on top of the mower. Push firmly into position; it will fit in only one position.
6. Make certain all nuts, bolts and screws are tightened securely.

Your mower has been shipped as a mulcher. To discharge grass to the side, proceed with step 7.



WARNING: Be certain to remove power key and battery pack before exchanging mulching cover and side discharge chute.

7. To convert your mower from a mulcher to a side discharge mower, remove the two plastic nuts from the right side of the mower. See inset, below. Remove the mulching cover by lifting up. Place the side discharge chute over the two studs and firmly secure with nuts just removed.



OPERATING INSTRUCTIONS

PRE-START CHECKS

CHECK to make sure all guards, mulching cover or side discharge chute are in proper place and securely tightened.

CHECK external surfaces of mower and remove any accumulation of dirt, dust, dried grass clippings.

CHECK cutting height and readjust to desired height before starting. Refer to CUTTING HEIGHT

ADJUSTMENT on page 6 for procedure.

NOTE: *The lawn mower battery pack has been fully charged at the factory, however, since batteries self-discharge with time, you must recharge the battery pack to a full charge before using your mower for the first time.*

OPERATING PROCEDURE

For easier starting, move mower to an area where grass is short enough not to interfere with rotation of cutting blade. Before starting, (especially for the first time) know how to stop the motor quickly in the event of emergency. To stop the motor, release the BLADE CONTROL.

STARTING-STOPPING: TO START, insert power key into the switch slots (located behind battery pack, see Figure 1), depress button on BLADE CONTROL SWITCH and hold BLADE CONTROL firmly to handle then release button. While mowing, push at a speed that is comfortable but slow enough to allow even cutting. TO STOP, release the BLADE CONTROL.

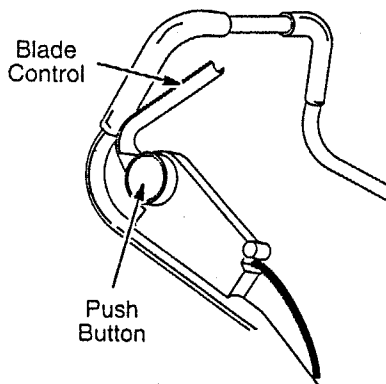
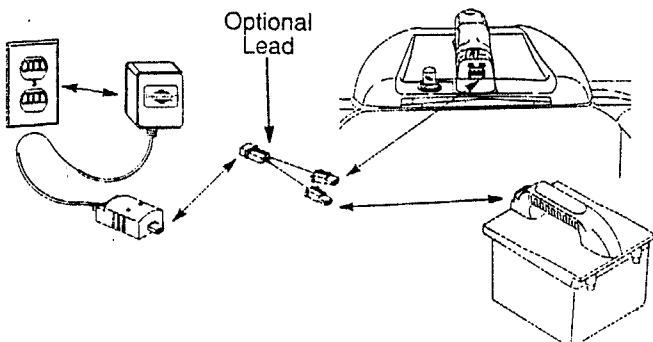


Figure 2. Blade Control Assembly

WARNING: This blade control is a safety device. Do not defeat or bypass.



BATTERY CHARGING INSTRUCTIONS



WARNING: The battery contains corrosive fluid and toxic material – HANDLE WITH CARE. Keep away from children. Do not puncture, disassemble, mutilate or incinerate. Explosive gases could be vented during charging or discharging. Use in a well-ventilated area, away from sources of ignition.

Charge battery packs indoors or in a dry area out of the weather. Use only the battery charger provided with the mower (part number 497400). Plug the battery charger into the mower first, then into any standard 110/120 volt household electrical outlet. You may use the optional battery charger lead to charge two battery packs at once or charge one battery pack at a time without the lead.

If an extension cord is required, use one marked for outdoor use and is at least wire size 16 AWG. Connect the extension cord to charger before plugging extension cord into electrical outlet. Always recharge battery packs fully immediately after each use. It takes at least 16 hours to recharge a completely discharged battery; at least 24 hours to recharge two battery packs at once. Red light on the battery charger indicates battery charger is plugged into an electrical outlet; green light indicates battery is fully charged.

It is recommended the battery packs be left on charge continuously between each use and also during storage. Leaving the battery packs discharged will cause damage to the battery packs.

Always disconnect battery charger (or extension cord if used) from the electrical outlet first, then disconnect battery charger from battery pack.

TO START MOTOR AND ENGAGE BLADE

1. Insert power key into key slots, located on the mower behind the battery pack.
2. Depress push button on the blade control. Pull blade control handle back against mower handle. Release push button.

TO STOP MOTOR AND BLADE

1. Release blade control handle to stop the motor and blade.



WARNING: The blade continues to rotate for a few seconds after the motor is shut off.

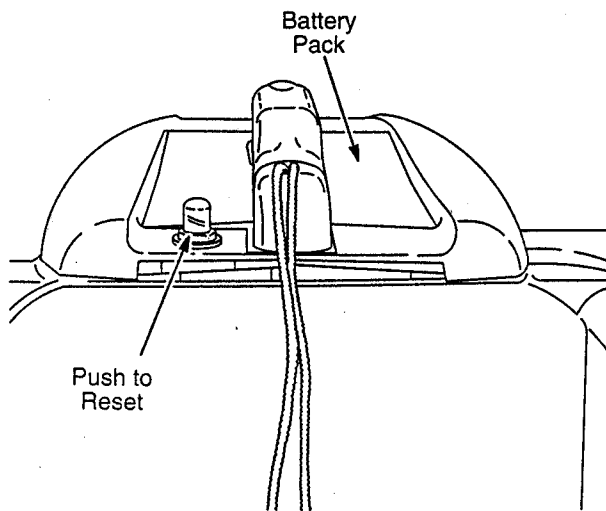
2. Remove the power key when equipment is unattended.
3. Reminder: Charge battery pack(s) continuously when not using mower.

OPERATING INSTRUCTIONS

ELECTRONIC CUT-OUT SWITCHES

Circuit Breaker

A circuit breaker is located to the left of the power key on top of the mower. This breaker may trip under certain conditions such as cutting under overload conditions or short circuiting of the wiring. A tripped circuit breaker is indicated if the mower will not run and the white circuit breaker reset button is projecting up into the transparent rubber boot. See Figure 3. If this occurs, reset the breaker by depressing the rubber boot and reset button. If the circuit breaker does not reset or if it trips repeatedly under normal cutting conditions, the mower should be examined at a Snapper authorized dealer.



NOTE: If circuit breaker trips during operation of mower, allow the electric motor to cool for about 1 minute before resetting breaker.

Figure 3. Circuit Breaker

Low-Voltage Cut-Out Switch

The motor is equipped with an electronic device that stops the mower if battery charge becomes excessively low. This would occur after an extended period of mowing, when the blade speed becomes slow. Before restarting the mower, replace the battery pack with a fully charged battery pack (the discharged battery pack should be recharged immediately to avoid damage to the battery pack).

CUTTING HEIGHT ADJUSTMENT

The cutting height adjustment handle is located on the right side of the deck. The handle may be placed in one of five cutting height positions. Pull the handle toward the wheel and then either forward to raise the cutting height or backward to lower the cutting height. See Figure 4.

For rough or uneven lawns, move the height adjustment handle to a higher cutting height.

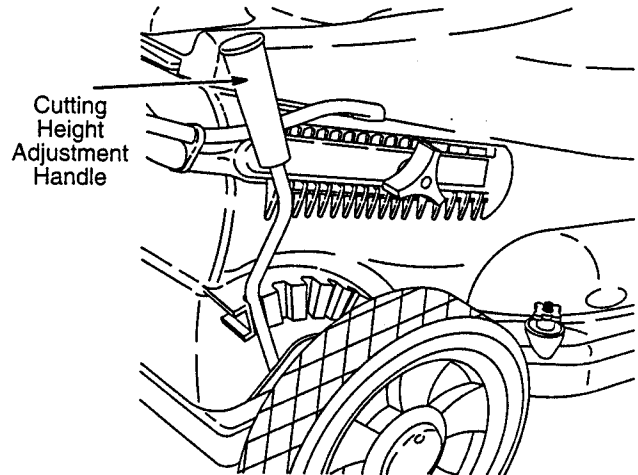


Figure 4. Cutting Height Adjustment

HANDLE HEIGHT ADJUSTMENT

Three holes in the upper handle provide handle height adjustment. See Figure 5. The mower is shipped with the handle in the middle height position. To change the height of the handle, proceed as follows.

Remove two hand knobs and carriage bolts which secure upper handle to lower handle. To raise handle height, align bottom holes in upper handle with holes in lower handle; to lower handle height, align top holes in upper handle with holes in lower handle.

When height has been selected, secure upper and lower handles using carriage bolts and hand knobs just removed.

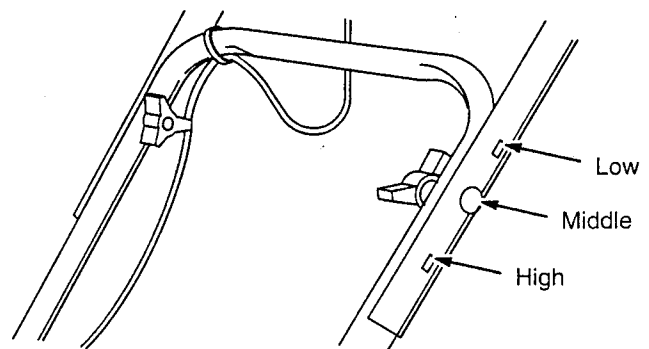


Figure 5. Handle Height Adjustment

SERVICE



WARNING: Be sure to stop motor and remove power key and battery pack before performing any repairs or maintenance.

SERVICE ASSISTANCE – REPLACEMENT PARTS

To maintain the original quality of your mower, use Genuine Snapper Replacement Parts only. To obtain the correct part for your particular mower, always specify model and serial number as found on name plate. Contact your Snapper authorized dealer for parts and service assistance. We recommend returning your mower to a Snapper authorized dealer once each year for inspection and addition of any new devices which might upgrade the safety of your mower. For the nearest Snapper authorized dealer, call 1-800-762-7737.

CLEANING

Remove power key. Wipe mower clean with a dry cloth. Periodically remove the battery pack and wipe battery cavity clean (do not use water).

To prolong the life and efficiency of your mower, clean the underside of the mower deck after each use. Tilt the mower forward or on its side and scrape clean (make certain power key and battery pack have been removed).

CUTTING BLADE

CHECK at frequent intervals to make sure the blade is securely tightened and that it is in good condition.

REPLACE blade if badly chipped, bent, out of balance or as soon as notch starts wearing in the tip between the flat surface and upturned lift as depicted in View B, Figure 6. This type wear pattern occurs more rapidly under sandy soil conditions.



WARNING: Never operate the mower with the blade worn to the extent depicted in view C as the tip could fly off causing personal injury or property damage.

SHARPEN blade when the cutting edges become dull if the blade is in otherwise good condition. When the blade is dull the grass cut ends will be ragged and usually turn brown soon after mowing. For best results, remove the blade and sharpen it on a grinding wheel at an angle of 25 degrees. The cutting surface should extend in about 2-1/2" from the tips. Check the blade after sharpening to determine that it is still balanced. It will cause excessive vibration if unbalanced. **BE CAREFUL: AVOID CUTTING YOURSELF ON SHARP BLADE! WEAR HEAVY LEATHER GLOVES.**

Before reassembling the blade and the blade adapter to the unit, coat the motor crankshaft and the inner surface of the blade adapter with light oil (or engine oil).

INSTALL sharpened or replacement blade with components in same sequence as removed. See Figure 7. Do not substitute any components here. Tighten the blade retaining capscrew to 19 foot pounds torque value.

When replacing the blade, be sure to install the blade with the stiffening ribs on blade facing toward the mower. See Figure 7.

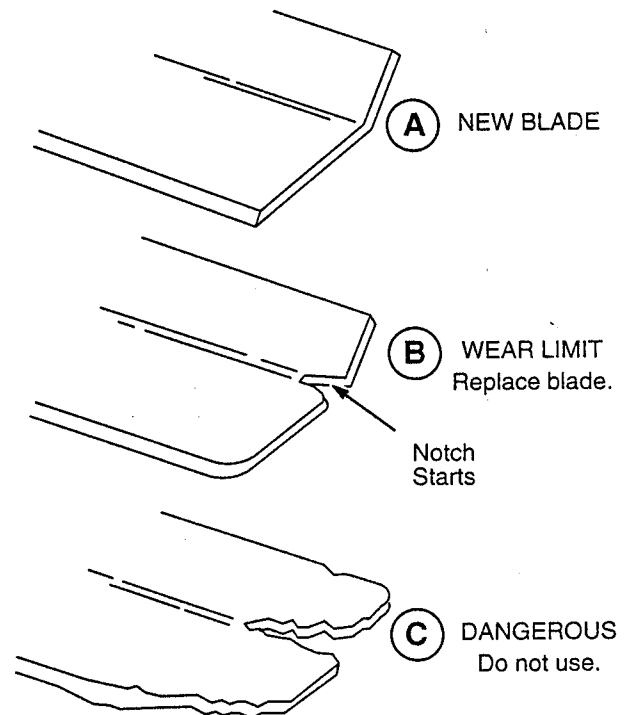


Figure 6. Blade Tip Wear Patterns

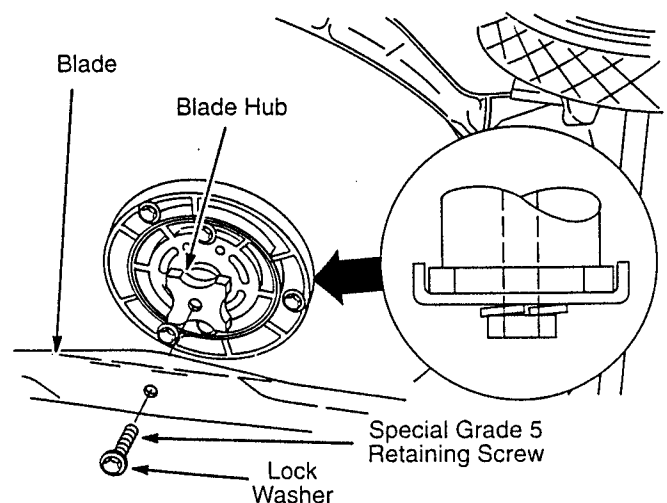


Figure 7. Blade Retention Detail

OFF-SEASON STORAGE

The following steps should be taken to prepare lawn mower for storage.

1. Clean mower thoroughly as described previously.
2. Keep battery pack(s) fully charged while in storage (See BATTERY CHARGING INSTRUCTIONS).
NOTE: *Battery pack(s) will be damaged if stored discharged.*
3. Coat mower's cutting blade with chassis grease to prevent rusting.
4. Coat other exposed metal parts with light oil or engine oil to prevent rusting.
5. Store mower in a dry, clean area. Do not store next to corrosive materials, such as fertilizer.

HANDLE STORAGE

The handle assembly may be folded away completely for storage. To fold the handle assembly, loosen the hand knobs which secure the lower handle to the deck. Refer to Figure 1. Fold the entire handle assembly forward and down over the mower until the grips are resting on the ground. Then loosen the knobs which secure the upper handle to the lower handle and fold the upper handle backward until it rests on top of the mower. As you fold the handles, make sure the knobs are loosened adequately and be careful not to pinch the cable.

To place the handle assembly in the operating position, pull up and back on the upper handle until it is raised to the operating position and tighten the four hand knobs securely. Be careful not to pinch the cable when unfolding the handles.

IMPORTANT: Be careful not to kink the cable at any time, which could damage the unit and render the controls inoperative.

TROUBLESHOOTING GUIDE



WARNING: Be certain to remove power key and battery pack before performing any adjustment or repair.

Trouble	Possible Cause(s)	Corrective Action
Motor fails to start	<ol style="list-style-type: none"> 1. Power key not inserted. 2. Motor/blade control handle disengaged. 3. Battery discharged. 4. Mower deck clogged with grass and debris. 5. Tripped circuit breaker. 	<ol style="list-style-type: none"> 1. Insert power key. 2. Depress starter button and motor/blade control handle. 3. Charge battery. 4. Unclog mower deck. Make certain blade is free to move. 5. Reset circuit breaker.
Mower stops while mowing	<ol style="list-style-type: none"> 1. Discharged battery. 2. Cutting too much grass. 3. Clogged deck. 	<ol style="list-style-type: none"> 1. Charge battery. 2. Raise cutting height. 3. Unclog mower deck. Raise cutting height or cut a narrower swath.
Excessive vibration	<ol style="list-style-type: none"> 1. Cutting blade loose or unbalanced. 2. Bent cutting blade. 	<ol style="list-style-type: none"> 1. Tighten blade and adapter. Balance blade. 2. Replace blade.
Mower will not mulch grass.	<ol style="list-style-type: none"> 1. Mower deck clogged. 2. Wet grass. 3. Excessively high grass. 4. Dull blade. 	<ol style="list-style-type: none"> 1. Unclog mower deck. Make certain blade is free to move. 2. Do not mow when grass is wet; wait until later to cut. 3. Mow once at a high cutting height, then mow again at desired height or make a narrower cutting swath (1/2 width). 4. Sharpen or replace blade.
Uneven cut	Dull blade.	Sharpen or replace blade.

NOTE: For repairs beyond the minor adjustments listed above, contact your nearest Snapper authorized dealer.



WARNING: To reduce the risk of injury, do not operate mower unless discharge chute or mulching cover, and rear trailing shield are in their proper places.

BRIGGS & STRATTON MOTOR AND BATTERY PACK SYSTEM WARRANTY EFFECTIVE JANUARY 1, 1995

LIMITED WARRANTY

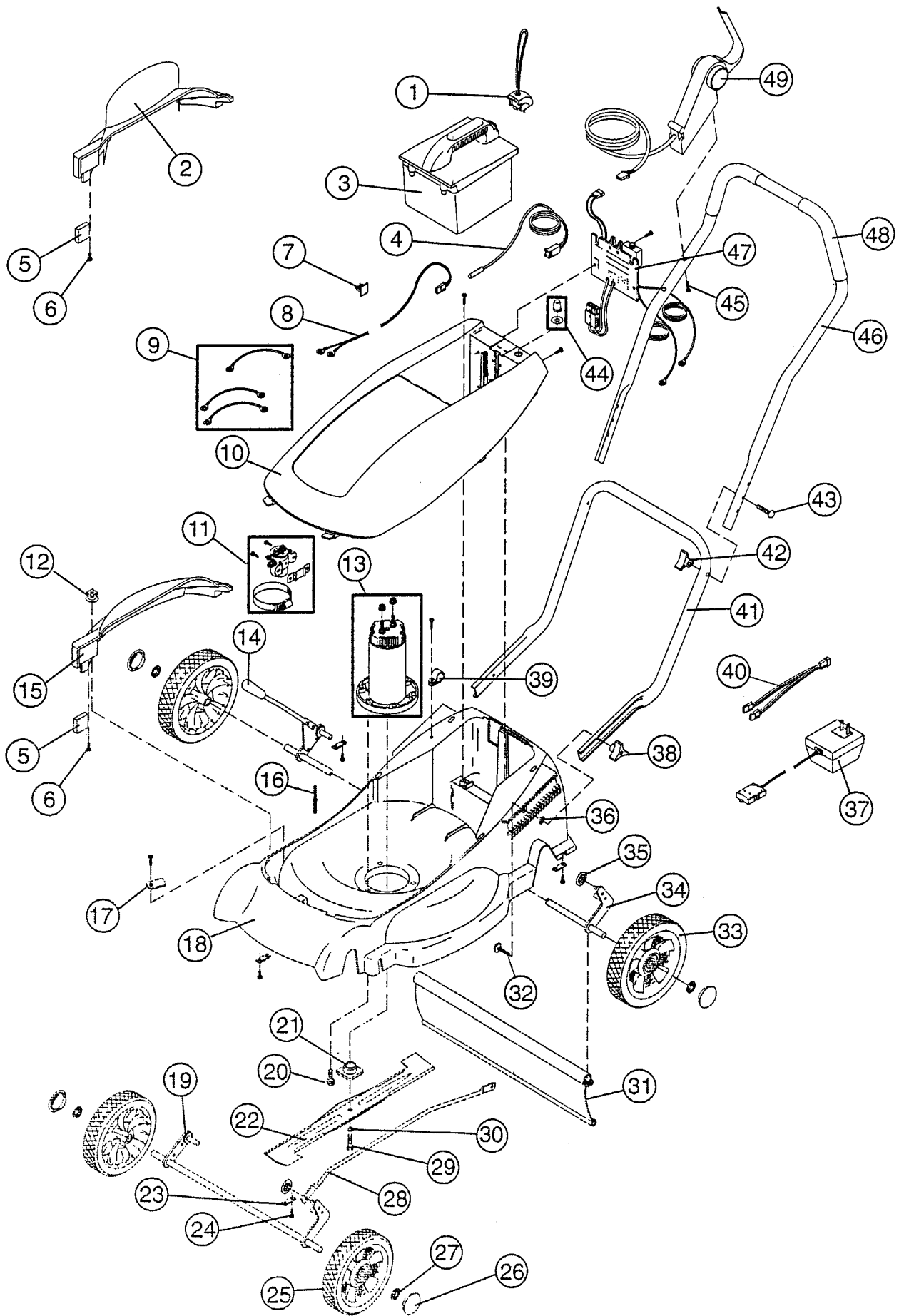
"Briggs & Stratton Corporation will repair or replace, free of charge, any part, or parts of the Battery Pack System that are defective in material or workmanship or both. Transportation charges on parts submitted for repair or replacement under this Warranty must be borne by purchaser. This warranty is effective for the time periods and subject to the conditions provided for in this policy. For warranty service contact your nearest Authorized Service Dealer as listed in the 'Yellow Pages™' under 'Engines, Gasoline,' 'Gasoline Engines,' 'Lawn Mowers' or similar category. THERE IS NO OTHER EXPRESS WARRANTY. IMPLIED WARRANTIES, INCLUDING THOSE OF MERCHANTABILITY AND FITNESS FOR A PARTICULAR PURPOSE ARE LIMITED TO ONE YEAR FROM PURCHASE, OR TO THE EXTENT PERMITTED BY LAW ANY AND ALL IMPLIED WARRANTIES ARE EXCLUDED. LIABILITY FOR CONSEQUENTIAL DAMAGES UNDER ANY AND ALL WARRANTIES ARE EXCLUDED TO THE EXTENT EXCLUSION IS PERMITTED BY LAW. Some states do not allow limitations on how long an implied warranty lasts, and some states do not allow the exclusion or limitation of incidental or consequential damages, so the above limitation and exclusion may not apply to you. This warranty gives you specific legal rights and you may also have other rights which vary from state to state."

WARRANTY PERIOD

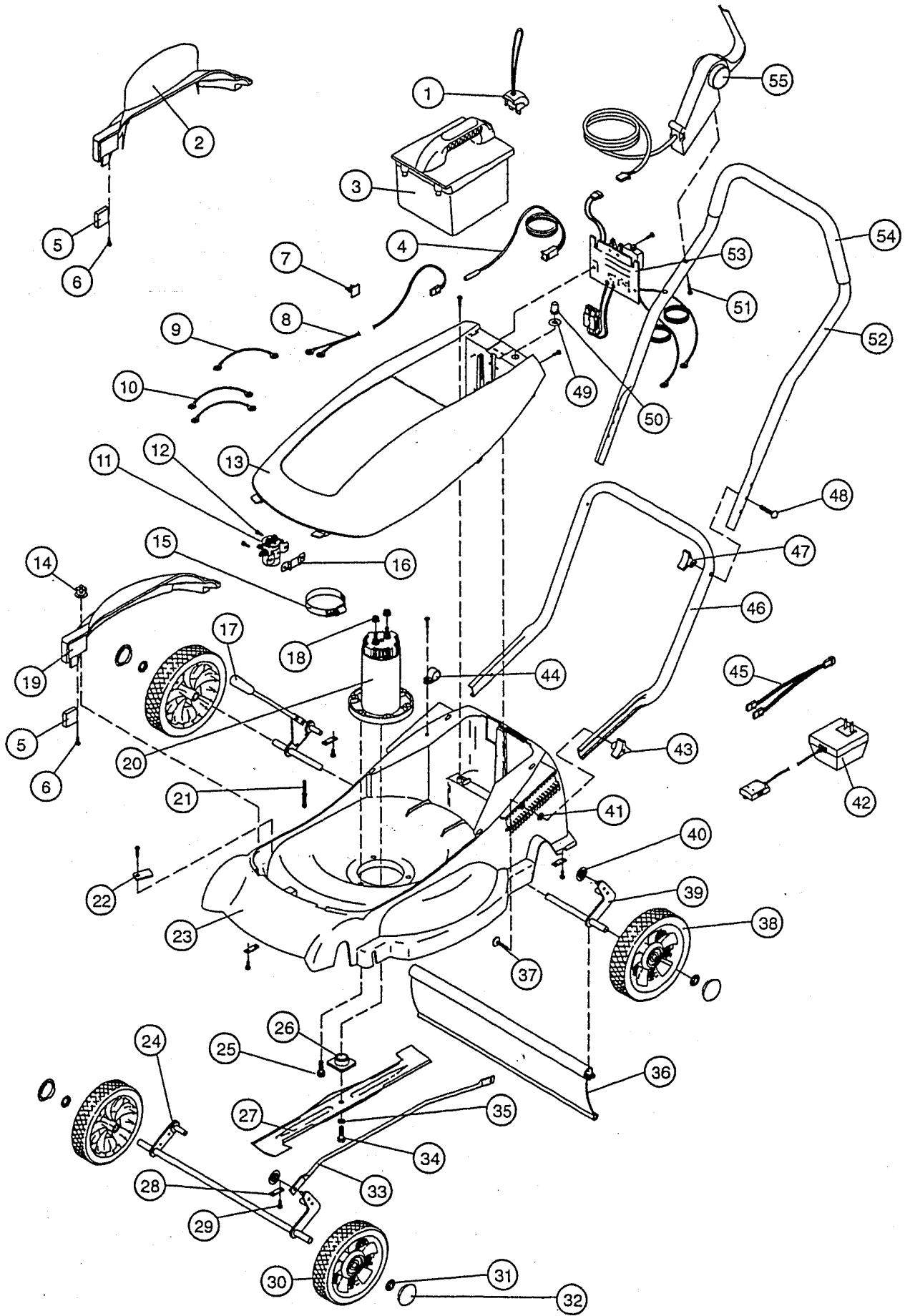
COMPONENT	PERIOD
Battery Pack System (motor, circuit board, key, charger)	2 years
Battery Pack	1 year

This Warranty shall only apply to "consumer use" which means personal residential household use by the original retail consumer.

NO WARRANTY REGISTRATION CARD IS NECESSARY TO OBTAIN WARRANTY ON A BRIGGS & STRATTON BATTERY PACK SYSTEM. YOU MUST SAVE THE PURCHASE RECEIPT. A PROOF OF PURCHASE DATE WILL BE REQUIRED TO OBTAIN WARRANTY.



ITEM	BRIGGS & STRATTON PART NUMBER	DESCRIPTION	SNAPPER PART NUMBER
1	497399	Key Assembly	
2		Discharge Chute	36533
3	497395	Battery Pack Assembly	
4	497392	Interlock Switch Assembly	
5		Magnet	35678
6		Screw	91796
7		Cord Clip	35826
8	497875	Circuit Board Wire Assembly	
9	498288	Harness – Wiring	
10		Mower Cover	36534
11	498287	Solenoid	
12		Knob	36535
13	498289	Motor	
14		Height Adjustor Handle	36536
15		Mulching Cover	36537
16		Chute Stud	35683
17		Interlock Retainer	91797
18		Mower Deck	36538
19		Height Adjustor, Front	35685
20		Bolt, Motor	91798
21		Blade Adaptor	35686
22		Blade	35687
23		Axle Retainer	35825
24		Screw	91223
25		Front Wheel	35688
26		Hubcap	35689
27		Wheel Retainer	91799
28		Height Adjustor Link	35690
29		Blade Mounting Bolt	90238
30		Washer, Split Ring	91690
31		Trailing Shield	35691
32		Lower HandleBar Bolt	91805
33		Rear Wheel	35692
34		Height Adjustor, Rear	35693
35		Link Retainer	12485
36		Bolt Retainer	11791
37	497400	Charger	
38		Handlebar Knob	36539
39		Wire Clamp	24641
40	497435	Harness, Battery Charger (Optional)	
41		Lower Handlebar	36540
42		Handlebar Knob	36539
43		Handlebar Bolt	90861
44	497926	Circuit Breaker Label/Boot	
45		Handlebar Screw	90849
46		Upper Handlebar	36541
47	497627	Motor Control	
48		Foam Grip	36542
49	497392	Blade Control Assembly	



345

Swappel BPI800

ITEM	PART NUMBER	DESCRIPTION	PART NUMBER
1	498271	Key Assembly	
2	281605	Discharge Chute	35677
3	497395	Battery Pack Assembly	61269
4	497496	Interlock Switch Assembly	
5	211884	Magnet	35678
6	94969	Screw	91796
7	281532	Cord Clip	
8	497875	Circuit Board Wire Assembly	
9	497873	Solenoid Wire Assembly	
10	497888	Solenoid Wire Assembly	
11	497878	Solenoid	
12	805448	Solenoid Screw	
13	281603	Mower Cover	35679
14	281595	Knob	35680
15	393514	Solenoid Clamp	
16	222934	Solenoid Bracket	
17	281601	Height Adjustor Handle	35681
18	94949	Motor Nut	
19	281604	Mulching Cover	35682
20	497383	Motor	
21	263064	Chute Stud	35683
22	68848	Interlock Retainer	91797
23	281602	Mower Deck	35684
24	497384	Height Adjustor, Front	35685
25	94939	Bolt, Motor	91798
26	263059	Blade Adaptor	35686
27	225145	Blade	35687
28	225151	Axle Retainer	
29	94969	Screw	
30	498272	Front Wheel	35688
31	94933	Wheel Retainer	91799
32	281500	Hubcap	35689
33	263068	Height Adjustor Link	35690
34	94932	Blade Mounting Bolt	
35	90366	Washer, Spit Ring	
36	281482	Drag Shield	35691
37	283067	Lower Handlebar Bolt	
38	498273	Rear Wheel	35692
39	498628	Height Adjustor, Rear	35693
40	94972	Link Retainer	
41	94938	Bolt Retainer	
42	497400	Charger	
43	281598	Handlebar Knob	
44	281559	Wire Clamp	
45	497435	Harness, Battery Charger	
46	263139	Lower Handlebar.	35694
47	281598	Handlebar Knob	35695
48	94937	Handlebar Bolt	
49	273147	Circuit Breaker Label	
50	281530	Circuit Breaker Boot	
51	94941	Handlebar Screw	
52	263138	Upper Handlebar	35696
53	49727	Motor Control	
54	281589	Foam Grip	35697
55	497382	Deadman Control Assembly	



SNAPPER™

"LEGENDARY QUALITY"

Two Year Limited Residential Warranty

Snapper warrants any part or parts on this SNAPPER product for two years from the purchase date for the original purchaser's residential, non-commercial use against defects in material or workmanship. Any use other than on the purchaser's residential lawn constitutes commercial use. Submit any item that requires repair to any SNAPPER AUTHORIZED DEALER along with proof of purchase.

Call 1 (800) 762-7737 for the SNAPPER AUTHORIZED DEALER nearest you.

This warranty does not apply to the battery pack system or the battery pack, as those items are warranted separately by Briggs & Stratton Corporation. (See Briggs & Stratton Motor and Battery Pack System Warranty Policy, effective January 1, 1995, on page 9. This warranty also does not apply to parts that have been damaged by accident, alteration, abuse, normal wear and tear or any other cause beyond our control.

IMPLIED WARRANTIES, INCLUDING THOSE OF MERCHANTABILITY AND FITNESS FOR A PARTICULAR PURPOSE, ARE LIMITED TO TWO (2) YEARS FROM THE PURCHASE DATE FOR THE ORIGINAL PURCHASER'S RESIDENTIAL, NON-COMMERCIAL USE AND TO THE EXTENT PERMITTED BY LAW, ANY AND ALL IMPLIED WARRANTIES ARE EXCLUDED. THIS IS THE EXCLUSIVE REMEDY. LIABILITIES FOR CONSEQUENTIAL DAMAGES UNDER ANY AND ALL WARRANTIES ARE EXCLUDED.

SOME STATES DO NOT ALLOW LIMITATIONS ON HOW LONG AN IMPLIED WARRANTY LASTS OR DO NOT ALLOW THE EXCLUSION OR LIMITATION OF INCIDENTAL OR CONSEQUENTIAL DAMAGES, SO THE ABOVE LIMITATION OR EXCLUSION MAY NOT APPLY TO YOU.

All transportation costs incurred by the purchaser in submitting items to the SNAPPER AUTHORIZED DEALER under this warranty must be paid by the purchaser.

There is no other express warranty.

This warranty gives you specific legal rights and you may also have other rights which vary from state to state.



WARNING: THE USE OF REPLACEMENT PARTS OTHER THAN GENUINE SNAPPER PARTS MAY IMPAIR THE SAFETY OF SNAPPER PRODUCTS AND WILL VOID ANY LIABILITY AND WARRANTY BY SNAPPER ASSOCIATED WITH THE USE OF SUCH PARTS.

IMPORTANT: Please fill out the enclosed SNAPPER Product Registration Card and return within 10 days.