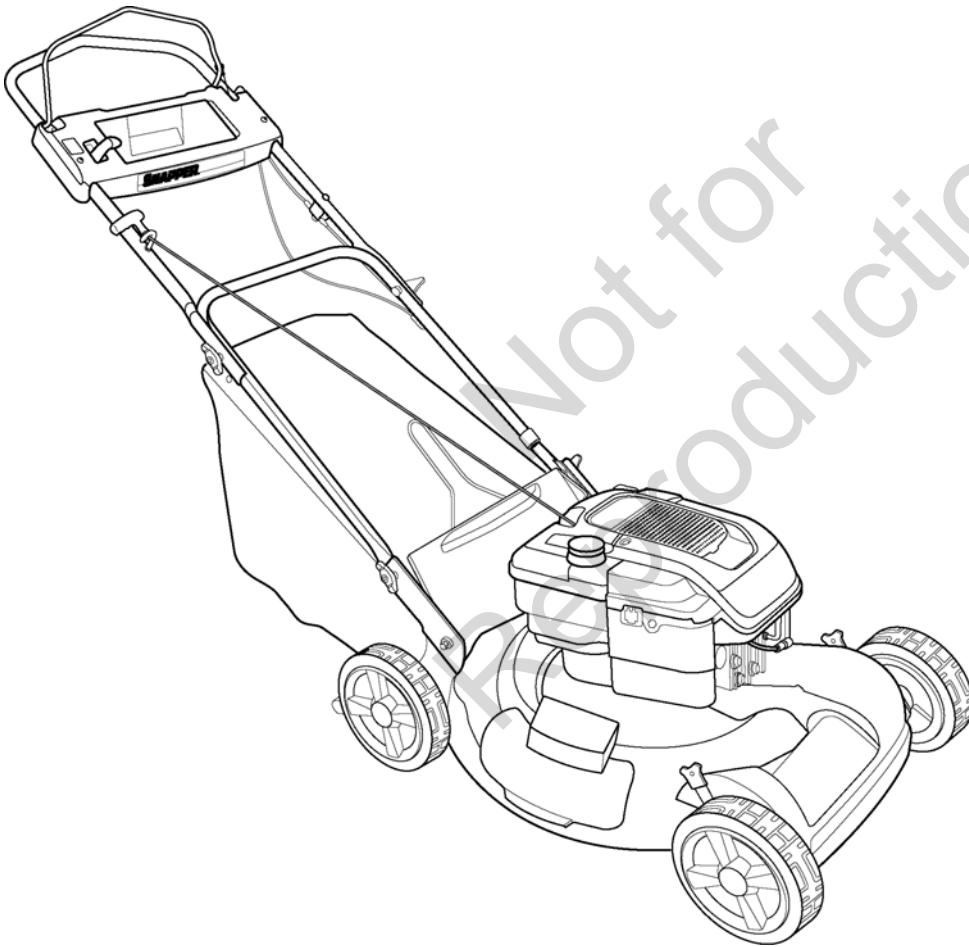


Parts Manual for

SNAPPER®

22" STEEL DECK REAR DISCHARGE VARIABLE SPEED WALK BEHIND MOWER

<i>Model No.</i>	<i>Description</i>
7800447	NSPVH2265
7800609	NSPVH22675
7800440	SPVH2265
7800606	SPVH22675



Briggs & Stratton Yard Power Products Group

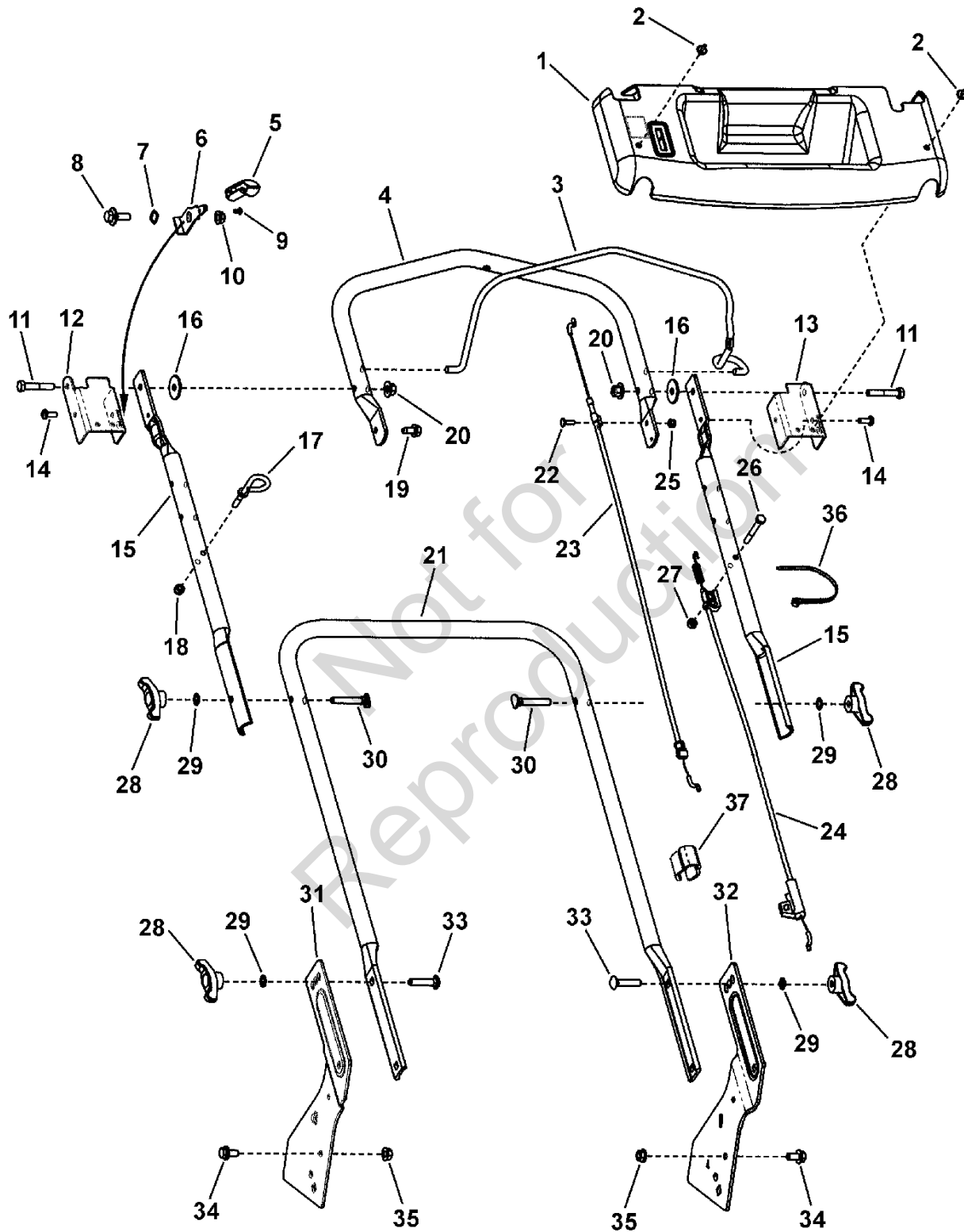
535 Macon Road
McDonough, GA, 30253 U.S.A.
800-935-2967

Manual No. 7006486
Revision: B 2/9/2010

Not for
Reproduction

PAGE	GROUP
4	Handles and Controls
6	Deck Assembly
8	Engine, Blade & Grass Bag
10	Transmission (22")
12	Decals

Not for
Reproduction

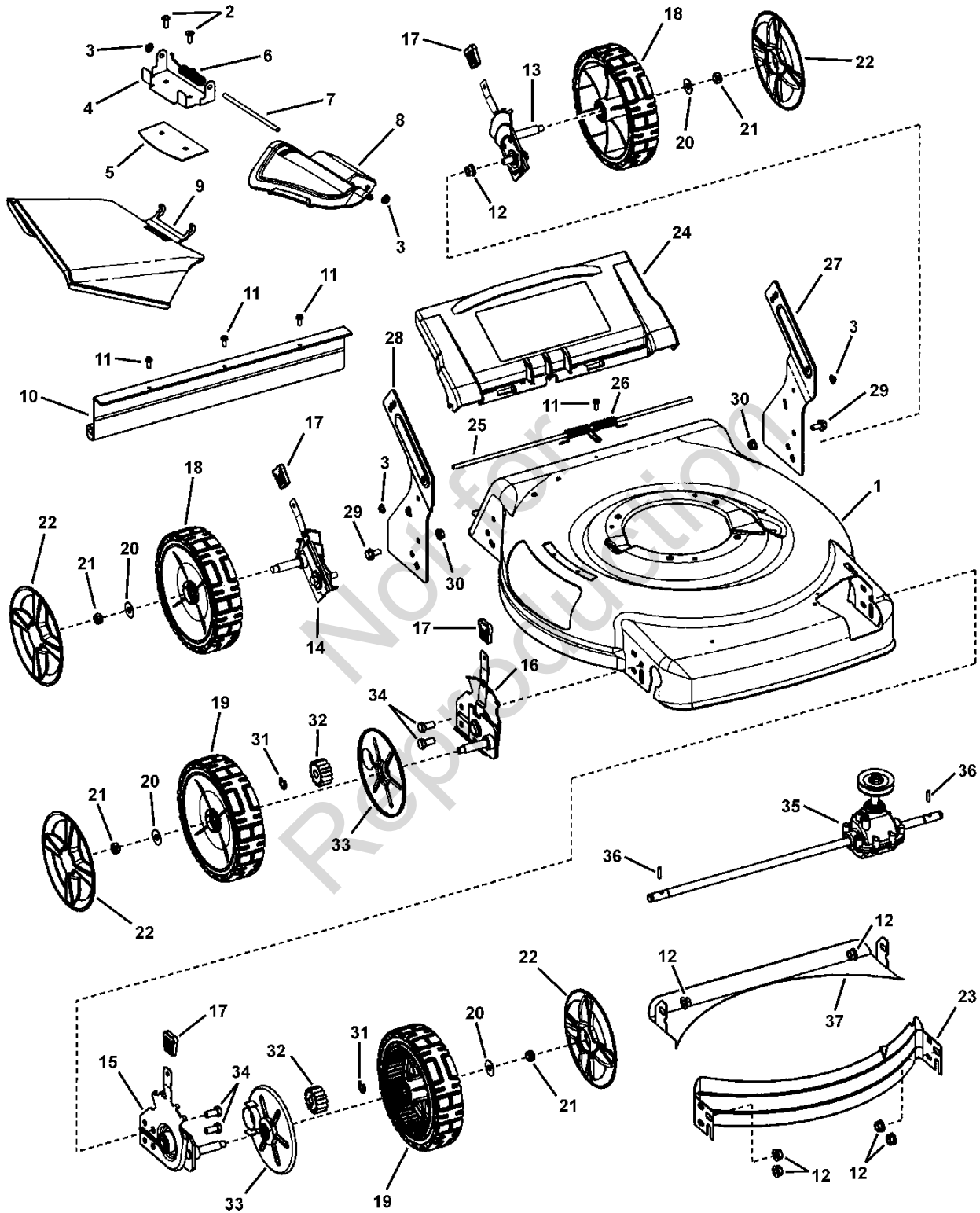


Handles and Controls

Item	Part No	Qty	Description
1	7101068	1	PANEL, Upper Handle, Snapper 21 WBM
2	1960382	2	RIVET, Pop .250 Dia.
3	7100844A	1	BAIL, Pivot Handle
4	7300434A	1	HANDLE, Pivot
5	7023655	1	LEVER, Lock Handle
6	7300526A	1	HANDLE, Lock
7	7026257	1	WASHER, .531 x .781 Wave
8	1716654	1	BOLT, 5/16-18 Shoulder
9	7071921	1	RIVET, Plastic Snap
10	7091601	5	NUT, 5/16-18 Flange Lock, YZ
11	7090669	2	SCREW, 5/16-18 x 1-3/4" Hex Head Cap, GR 5
12	7300792A	1	BRACKET, Rotation Limit, RH
13	7300436A	1	BRACKET, Rotation Limit, LH
14	7900067	2	SCREW, 1/4-20 x .55 Torx Self-Tap
15	7300459A	2	HANDLE, Upper, Straight, 22"
16	7023649	2	WASHER, 5/16 Nylon
17	7028488	1	ROPE GUIDE, (1/4-20 thread)
18	7076978	1	NUT, 1/4-20 Hex Nyloc
19	7090361	1	SCREW, 5/16-18 x 5/8" Hex Washer Self-Tap
20	7090951	4	NUT, 5/16-18 Large Head Center Lock, Black
21	7301013A	1	HANDLE, Lower
22	7091085	1	BOLT, #10-24 x 1/2" Flat Head Square Neck
23	7102666	1	CABLE, OPC, 22", Pivot Handle
24	7102665	1	CABLE, Drive, 22", Pivot Handle
25	7091290	1	NUT, #10-24 Hex Nyloc
26	7090505	2	SCREW, 1/4-20 x 2", Hex Head Cap, GR 5
27	7090372	1	NUT, 1/4-20 Hex Center Lock
28	7035744	4	KNOB, 5/16-18 Wing (Black)
29	7090391	4	WASHER, 5/16" Internal Tooth Lock
30	7091189	2	BOLT, 5/16-18 x 2" Curved Head Square Neck, GR 2
31	7300669A	1	BRACKET, Lower Handle LH 22" WBM
32	7300668A	1	BRACKET, Lower Handle, RH 22" WBM
33	7091612	2	BOLT, 5/16-18 x 1-1/2" Round Head Square Neck
34	7091811	2	BOLT, 5/16-18 x 5/8" Hex Flange Lock, YZ
35	7091601	2	NUT, 5/16-18 Flange Lock, YZ
36	7024649	1	WIRE TIE, 11 Inch Standard Black Nylon
37	721768	2	CLIP, Cable, Double

Footnotes:

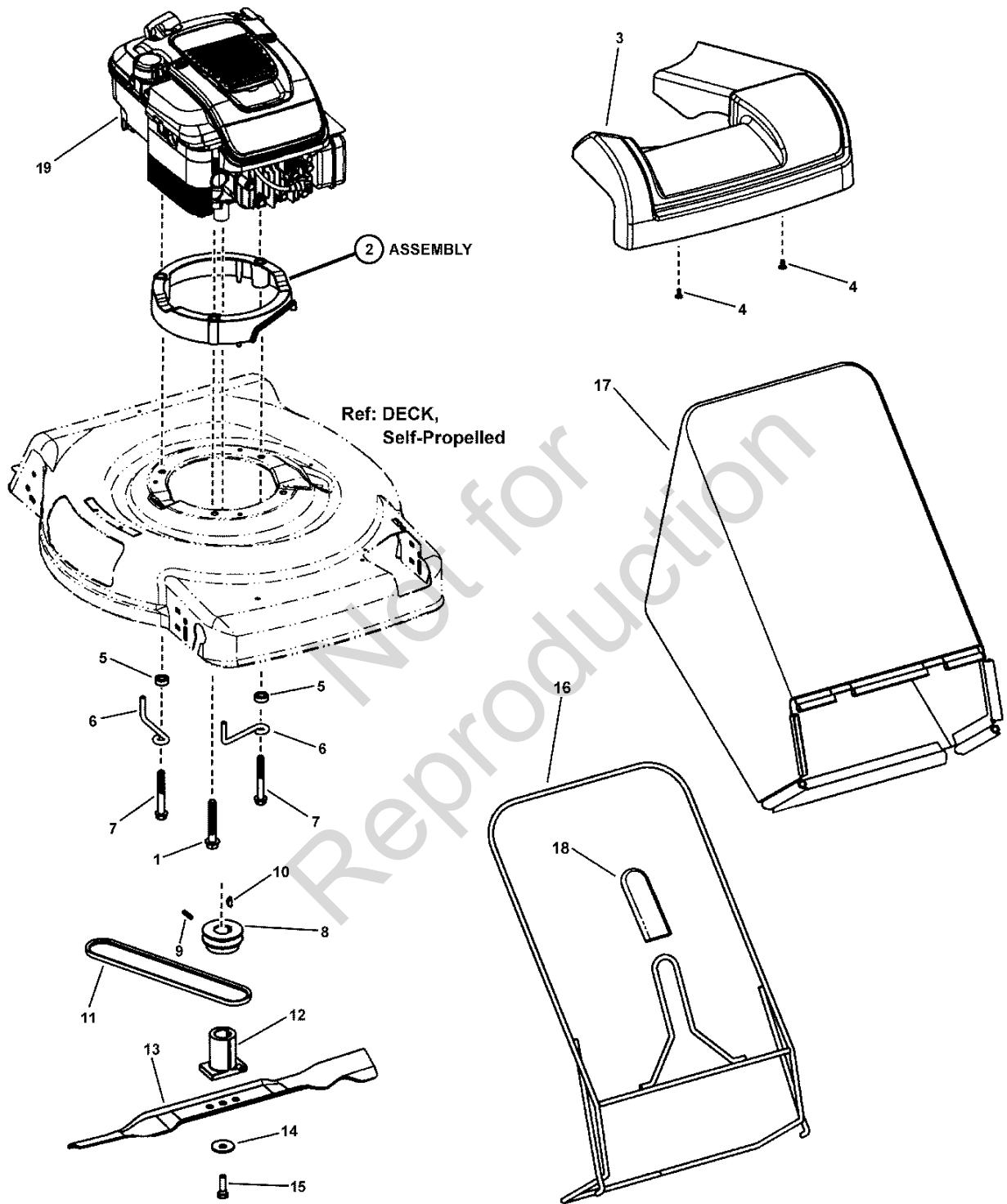
Deck Assembly



Deck Assembly

Item	Part No	Qty	Description
1	7300400D	1	DECK, 22" Walk, 3-N-1
2	7900067	3	SCREW, 1/4-20 x 11/16" Pan Head Self-Tap (Torx) or 722848
3	7091020	4	PUSHNUT, 1/4"
4	7300855D	1	BRACKET, Chute
5	7300856D	1	PLATE, Mulch, 22" RB Scott's
6	722507	1	SPRING, Chute (Torsion)
7	7101067	1	ROD, Pivot (1/4" Dia. x 5.55")
8	721682	1	COVER, Mulch, Plastic, Black
9	721681	1	SIDE CHUTE, Plastic, Black
10	7103347	1	GUARD, Rear
11	7091286	4	SCREW, #10-24 x 1/2" Hex Washer Self-Tap (Sems)
12	7091619	10	NUT, 3/8-16 Hex Flange Lock, YZ
13	7501055	1	ASSEMBLY, Height-Of-Cut, Left Rear, 22" WBM
14	7501056	1	ASSEMBLY, Height-Of-Cut, Right Rear, 22" WBM
15	7501058	1	ASSEMBLY, HOC, Left Front, 22" WBM, Propelled
16	7501057	1	ASSEMBLY, HOC, Right Front, 22" WBM, Propelled
17	7100633	4	GRIP, Height Latch
18	7500540	2	ASSEMBLY, Wheel & Bearing, 8 x 2 Idle, DW Tread incl. two 1-1/8" O.D. Flanged Ball Bearings (p/n 7101380)
19	7500542	2	ASSEMBLY, Drive Wheel & Bearing, 8 x 2, DW Tread incl. two 1-1/8" O.D. Flanged Ball Bearings (p/n 7101380)
20	722604	4	WASHER, 1" O.D. x .387 I.D. Flat
21	7091585	4	NUT, 3/8-16 Hex Center Lock, YZ
22	7101350	4	HUBCAP, Black
23	7300440D	1	BAFFLE, Front, 22" WBM
24	7101243	1	DOOR, 22" Rear
25	7101070	1	ROD, Pivot, Rear Door (1/4" Dia. X 17-1/2")
26	7101461	1	SPRING, Torsion, Rear Door, 22" WBM
27	7300668A	1	BRACKET, Lower Handle, RH 22" WBM
28	7300669A	1	BRACKET, Lower Handle LH 22" WBM
29	7091811	2	BOLT, 5/16-18 x 5/8" Hex Flange Lock, YZ
30	7091601	3	NUT, 5/16-18 Flange Lock, YZ
31	7014341	4	RING, External Retaining (Waldes 5133-50)
32	7101207	2	GEAR, Pinion, 22" WBM, Front Wheel Drive
33	7101402	2	DUST SHIELD, Forward, 22" WBM
34	7900054	4	SCREW, 3/8-16 x 3/4" Hex Head Cap, GR 5, YZ
35	7100857	1	TRANSMISSION, Rocker 22" WBM, VS
36	7101270	2	DRIVE PIN, 22" WBM, Front Wheel Drive
37	7300854D	1	BAFFLE, Rear, 22" Deck

Footnotes:



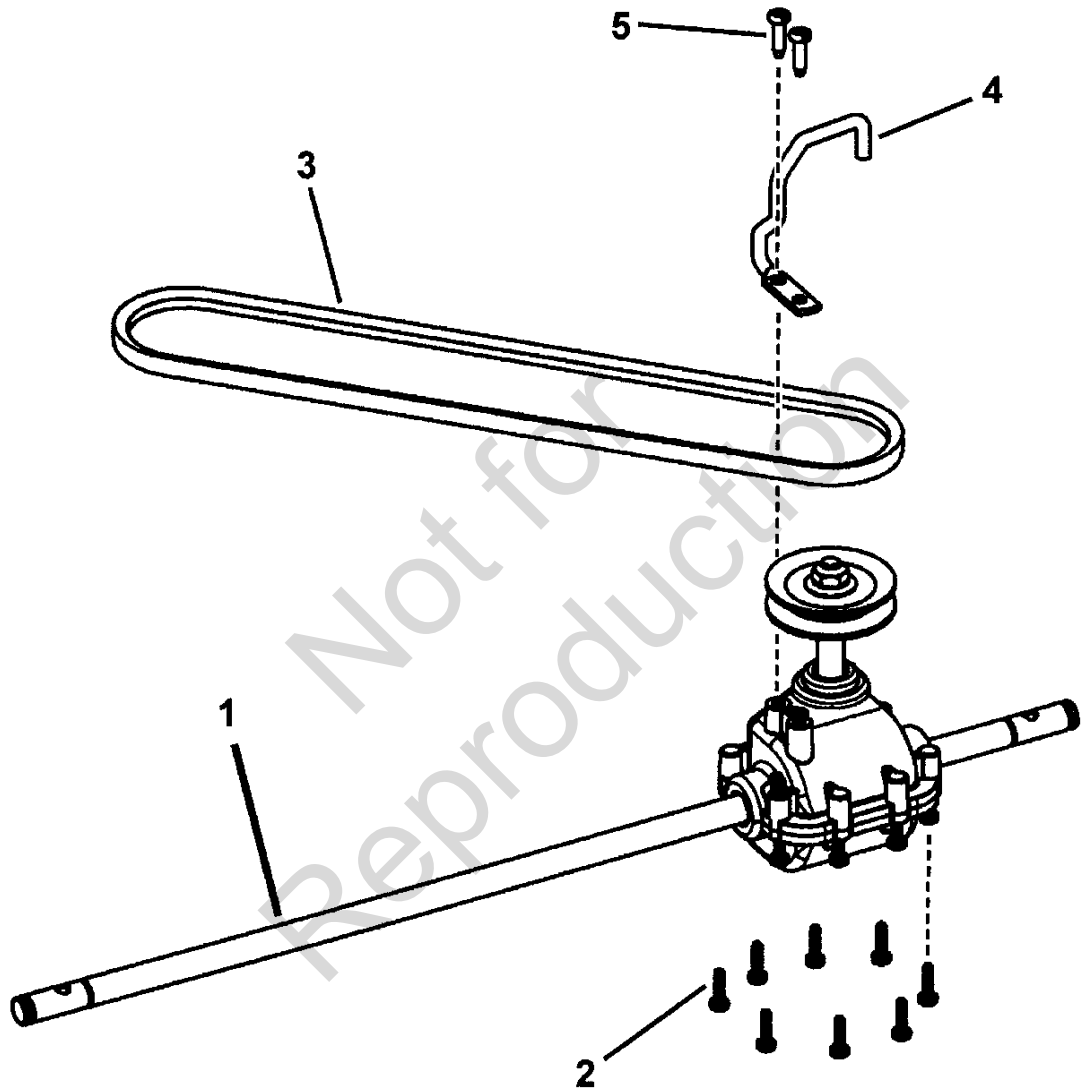
Engine, Blade & Grass Bag

Item	Part No	Qty	Description
1	720351	1	BOLT, 3/8-16 NS x 2-1/2"
2	7101449	1	ASSEMBLY, Engine Spacer, 22" WBM, Self-Propelled includes 7101209 (spacer) & 7101448 (3) (bushings)
3	7101195	1	FRONT COVER, Deck, 22" Front Wheel Drive
4	7900018	2	SCREW, 4.8 x 1.59 x 13mm, Round Washer Head Hi-Lo (Torx)
5	7101302	2	SPACER, Belt Guide 22"
6	7101024	2	BELT GUIDE, Engine, 22"
7	7101451	2	SCREW, 3/8-16 x 3" Hex Washer Self-Tap
8	7100437	1	PULLEY, Engine
9	7092086	1	SET SCREW, 5/16-18 x 1/2" Hex Recess
10	7091214	1	KEY, #HP-506 HI-PRO
11	7100913	1	** BELT, Drive (3L Section; 31.94" effective length)
12	7100740	1	BLADE HUB, 22" Deck, Self Propelled
13	7100851	1	BLADE, 22", Walk Mower
14	721890	1	WASHER, .38" I.D. x 1.183 O.D. Bellville
15	720209	1	BOLT, 3/8-24 x 3-1/4" Hex Head, GR 8
16	7101230A	1	BAG FRAME, 22" WBM (weldment)
17	7102573	1	GRASS BAG, 22" Rear Discharge
18	7026421	1	GRIP, Rectangular (Black)
19	124T02-0650-B3	1	* ENGINE, B&S, 650 Ser, X-Spec used on 7800440
19	124L02-4650-F3	1	* ENGINE, B&S, 650 Ser, X-Spec used on 7800447
19	126T02-0675-B3	1	* ENGINE, B&S, 675 Ser, X-Spec used on 7800606
19	126L02-4675-F3	1	* ENGINE, B&S, 675 Ser, X-Spec used on 7800609

Footnotes:

NOTE: * Purchase engine parts from engine manufacturer dealer.

Note: ** Part number appears on belt



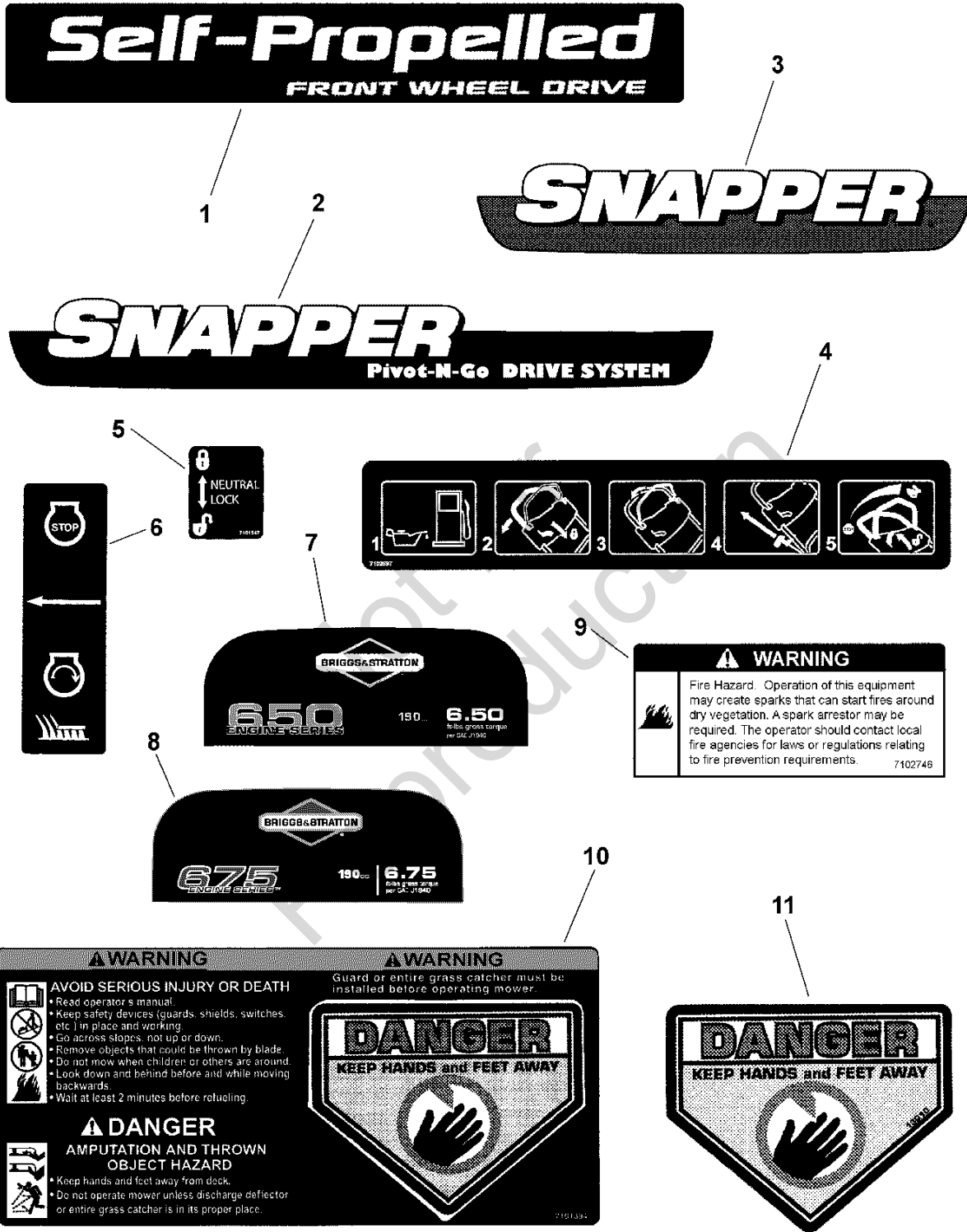
Transmission (22")

Item	Part No	Qty	Description
1	7100857	1	TRANSMISSION, Rocker 22" WBM, VS
2	7900032	8	SCREW, 7mm x 1 x .550 AB Point
3	7100913	1	** BELT, Drive (3L Section; 31.94" effective length)
4	7101009	1	BELT GUIDE, Transmission, 22" WBM
5	7900055	2	SCREW, #10-14 x 1/2" Hex Washer Self-Tap or 7091195 (SCREW, #16-16 x 3/4" Pan Head Self-Tap, Combo)

Not for
Reproduction

Footnotes:

Note: ** Part number appears on belt



Decals

Item	Part No	Qty	Description
1	7101538	1	DECAL, Front Cover, 22" Snapper, FWD
2	7102862	1	DECAL, Pivot-N-Go
3	7102153	1	DECAL, Briggs Engine, 675 Series
4	7102697	1	DECAL, Pivot Handle, Snapper
5	7101547	1	DECAL, Neutral Lock
6	7029782	1	DECAL, OPC Bail International Symbol
7	7102152	1	DECAL, Briggs Engine, 650 Series
8	7102151	1	DECAL, Briggs Engine, 675 Series
9	7102746	1	DECAL, Spark Arrestor
10	7101394	1	DECAL, Warning, Rear Discharge Door
11	7013010	1	DECAL, Danger, Cut Finger

Not for
Reproduction

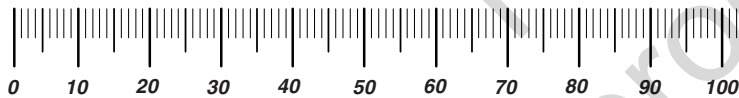
Footnotes:

Not for
Reproduction

Hardware Identification & Torque Specifications

Torque Specification Chart								
FOR STANDARD METRIC MACHINE HARDWARE (Tolerance ± 20%)								
Property Class	5.6		8.8		10.9		12.9	
	Class 5.6		Class 8.8		Class 10.9		Class 12.9	
Size Of Hardware	in/lbs		in/lbs		in/lbs		in/lbs	
	ft/lbs	Nm.	ft/lbs	Nm.	ft/lbs	Nm.	ft/lbs	Nm.
M3	5.88	.56	13.44	1.28	19.2	1.80	22.92	2.15
M4	13.44	1.28	30.72	2.90	43.44	4.10	52.56	4.95
M5	26.4	2.50	60.96	5.75	5.97	8.10	7.15	9.7
M6	44.64	4.3	7.3	9.9	10.3	14	12.1	16.5
M7	5.2	7.1	12.1	16.5	16.9	23	19.9	27
M8	7.7	10.5	17.7	24	25	34	29	40
M10	15	21	35	48	50	67	59	81
M12	26	36	61	83	86.2	117	103	140
M14	42	58	101	132	136	185	162	220
M16	64	88	147	200	210	285	250	340
M18	89	121	202	275	287	390	346	470
M20	126	171	290	390	405	550	486	660
M22	169	230	390	530	559	745	656	890
M24	217	295	497	375	708	960	840	1140
M27	320	435	733	995	1032	1400	1239	1680
M30	435	590	995	1350	1401	1900	1681	2280
M33	590	800	1349	1830	1902	2580	2278	3090
M36	759	1030	1740	2360	2441	3310	2935	3980
M39	988	1340	2249	3050	3163	4290	3798	5150

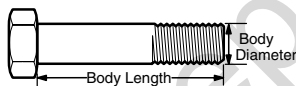
The guides and ruler furnished below are designed to help you select the appropriate hardware.



Nut, M8

Thread Diameter (mm)
Inside Diameter (in)
Threads per inch

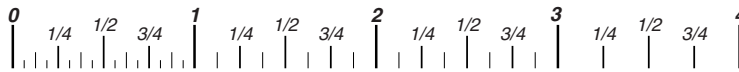
Nut, 1/2-16



Screw, M8- 1.25 x 25

Thread Diameter (mm)
Body Diameter
Distance between threads (mm)
Threads per inch
Body Length (mm)
Body Length (in)

Screw, 1/2- 16 x 2



Standard Hardware Sizing

When a washer or nut is identified as 1/2" (M8), this is the *Nominal size*, meaning the *inside diameter* is 1/2 inch (8mm metric thread diameter); if a second number is present it represents the *threads per inch* (distance between threads).

When bolt or capscrew is identified as 1/2 - 16 x 2" (M8 - 1.25 x 50), this means the *Nominal size*, or body diameter is 1/2 inch (8mm metric thread diameter), the second number, 16, represents the *threads per inch*, (1.25 thread diameter). The final number is the body length of the bolt or screw, 2 inches (50mm).

Torque Specification Chart						
FOR STANDARD MACHINE HARDWARE (Tolerance ± 20%)						
Hardware Grade	No Marks		SAE Grade 5		SAE Grade 8	
	SAE Grade 2		SAE Grade 5		SAE Grade 8	
Size Of Hardware	in/lbs		in/lbs		in/lbs	
	ft/lbs	Nm.	ft/lbs	Nm.	ft/lbs	Nm.
8-32	19	2.1	30	3.4	41	4.6
8-36	20	2.3	31	3.5	43	4.9
10-24	27	3.1	43	4.9	60	6.8
10-32	31	3.5	49	5.5	68	7.7
1/4-20	66	7.6	8	10.9	12	16.3
1/4-28	76	8.6	10	13.6	14	19.0
5/16-18	11	15.0	17	23.1	25	34.0
5/16-24	12	16.3	19	25.8	29	34.0
3/8-16	20	27.2	30	40.8	45	61.2
3/8-24	23	31.3	35	47.6	50	68.0
7/16-14	30	40.8	50	68.0	70	95.2
7/16-20	35	47.6	55	74.8	80	108.8
1/2-13	50	68.0	75	102.0	110	149.6
1/2-20	55	74.8	90	122.4	120	163.2
9/16-12	65	88.4	110	149.6	150	204.0
9/16-18	75	102.0	120	163.2	170	231.2
5/8-11	90	122.4	150	204.0	220	299.2
5/8-18	100	136	180	244.8	240	326.4
3/4-10	160	217.6	260	353.6	386	525.0
3/4-16	180	244.8	300	408.0	420	571.2
7/8-9	140	190.4	400	544.0	600	816.0
7/8-14	155	210.8	440	598.4	660	897.6
1-8	220	299.2	580	788.8	900	1,244.0
1-12	240	326.4	640	870.4	1,000	1,360.0

NOTES

- These torque values are to be used for all hardware excluding: locknuts, self-tapping screws, thread forming screws, sheet metal screws and socket head setscrews.
- Recommended seating torque values for locknuts:
 - for prevailing torque locknuts - use 65% of grade 5 torques.
 - for flange whizlock nuts and screws - use 135% of grade 5 torques.
- Unless otherwise noted on assembly drawings, all torque values must meet this specification.

Common Hardware Types

Hex Head Capscrew



Washer

Carriage Bolt



Lockwasher



Hex Nut

Wrench & Fastener Size Guide

1/4" Bolt or Nut Wrench—7/16"	5/16" Bolt or Nut Wrench—1/2"	3/8" Bolt or Nut Wrench—9/16"	7/16" Bolt or Nut Wrench (Bolt)—5/8" Wrench (Nut)—11/16"	1/2" Bolt or Nut Wrench—3/4"
M6 Bolt or Nut Wrench—10mm	M8 Bolt or Nut Wrench—13mm	M10 Bolt or Nut Wrench—17mm	M12 Bolt or Nut Wrench—19mm	M14 Bolt or Nut Wrench—22mm

Parts Manual for

SNAPPER®

22" STEEL DECK REAR DISCHARGE VARIABLE SPEED WALK BEHIND MOWE

Not for
Reproduction

IT IS THE POLICY OF BRIGGS & STRATTON CORP TO IMPROVE ITS PRODUCTS WHENEVER IT IS POSSIBLE AND PRACTICAL TO DO SO. WE RESERVE THE RIGHT TO MAKE CHANGES OR ADD IMPROVEMENTS AT ANY TIME WITHOUT INCURRING ANY OBLIGATION TO MAKE SUCH CHANGES ON PRODUCTS

Briggs & Stratton Yard Power Products Group

535 Macon Road
McDonough, GA, 30253 U.S.A.
800-935-2967

www.snapper.com

Copyright © 2010 Briggs & Stratton Corporation
Milwaukee, WI USA. All Rights Reserved

**Manual No. 7006486
Revision: B 2/9/2010**