

# #7600023 & 7600024 TWIN BAG CATCHER KIT FOR 38 & 42" SNAPPER / SIMPLICITY RZT RIDING MOWERS

7600023  
7600024

TWIN BAG CATCHER KIT FOR 38" SNAPPER / SIMPLICITY RZT RIDING MOWER  
TWIN BAG CATCHER KIT FOR 42" SNAPPER / SIMPLICITY RZT RIDING MOWER



## WARNING



DO NOT attempt any adjustments, maintenance, repairs, or service with engine running. Stop engine. Engage parking brake. Remove key. Remove spark plug wire and secure wire away from spark plug. Engine, muffler and surrounding areas are extremely hot. Avoid serious burns; allow components to cool down before installing kit. Replace worn or damaged parts prior to operating. Use approved fuel container. DO NOT smoke near open fuel container. DO NOT fill fuel tank indoors or when engine is running. Allow engine to cool for at least ten minutes before refilling. Make sure that fuel cap is tightened securely. Wipe off any spilled fuel before starting engine.

**NOTE:** Refer to the parts lists at the end of this manual for additional assistance with component identification.

**STEP 1 (38" Units Only):** Install one air lift onto the topside of each of the four blade tips, securing with three 5/16-24 x 5/8" oval head machine screws, internal tooth lock washers and hex nuts. See Figure 1. Torque hardware to 12 ft-lbs.

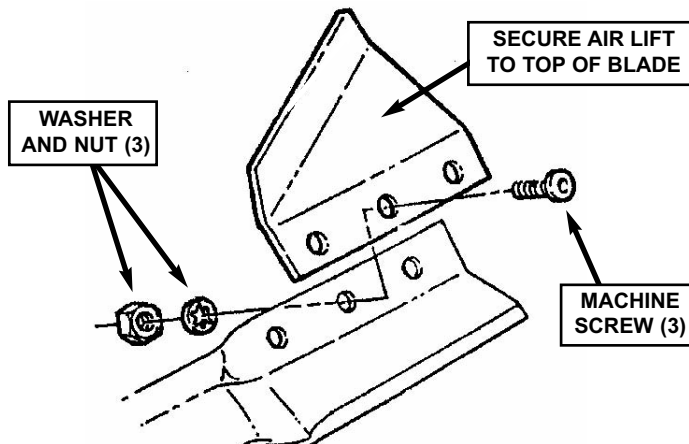


FIGURE 1

**STEP 2:** Install the baffle to the front of the mower deck:  
**38" Decks** - Secure the baffle with one 5/16 x 3/4" hex head cap screw, flat washer and center lock nut on one end, and the existing hardware on the other end. See Figure 2.  
**42" Decks** - Secure the baffle with two 5/16 x 5/8" pan head machine screws and flange lock nuts. See Figure 3.

**NOTE:** One or more holes may have to be drilled into the deck in order to install the baffle. If so, install the baffle as fully onto the deck as possible with the existing holes, then drill the remaining holes with an 11/32" drill, using the baffle hole(s) as a template.

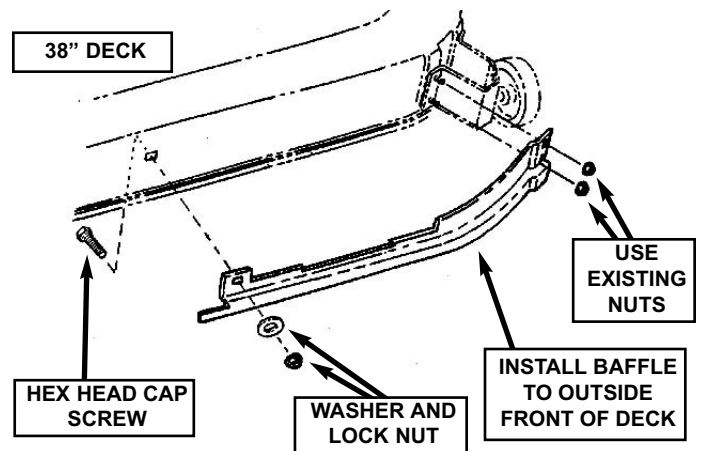


FIGURE 2

(Components removed for clarity)

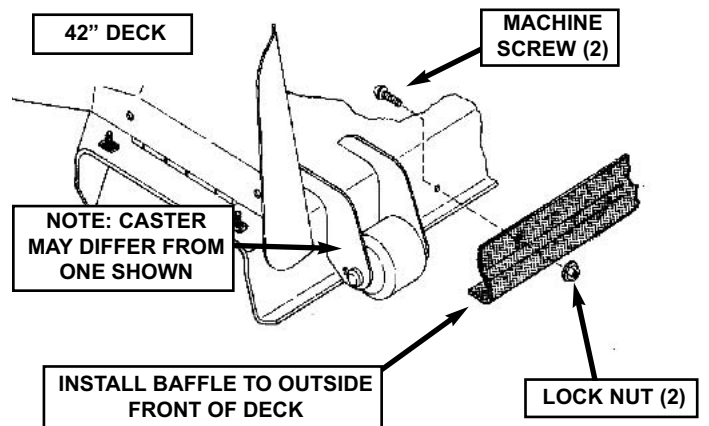
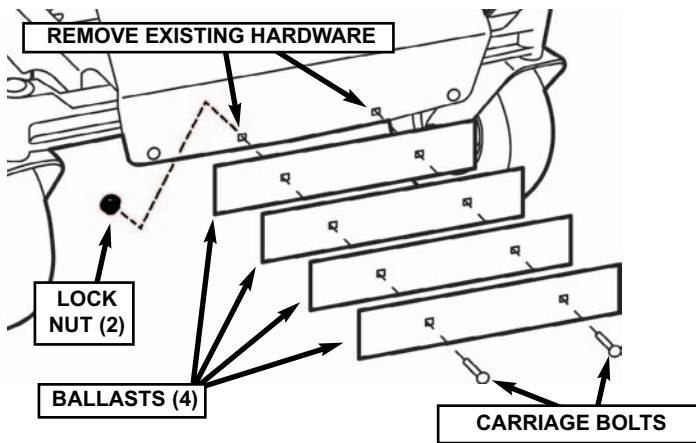


FIGURE 3

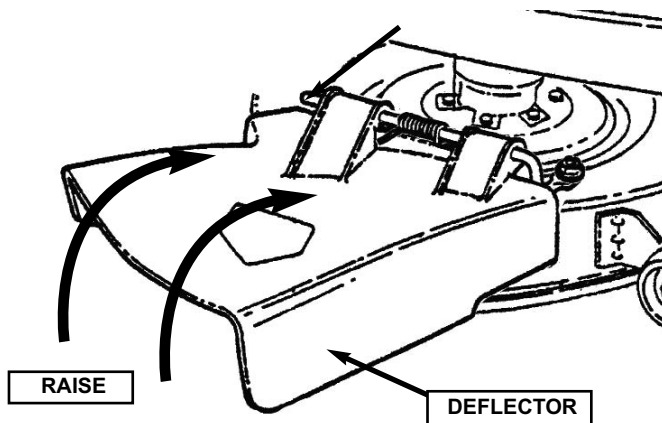
**STEP 3:** Remove the two innermost front carriage bolts securing the unit footrest to the frame. Install the four ballasts against the front of the machine, securing with the supplied 5/16 x 1-3/4" carriage bolts and lock nuts in place of those removed. Tighten hardware securely. See Figure 4.



**FIGURE 4**

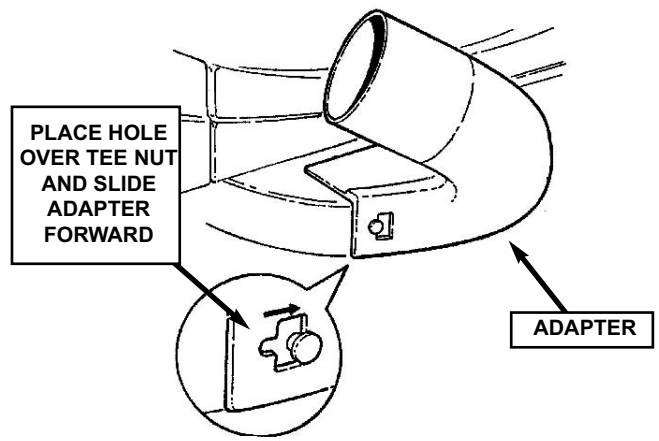
**STEP 4:** Install the bag adapter (38" Deck):

a. Raise the discharge deflector. See Figure 5.



**FIGURE 5**

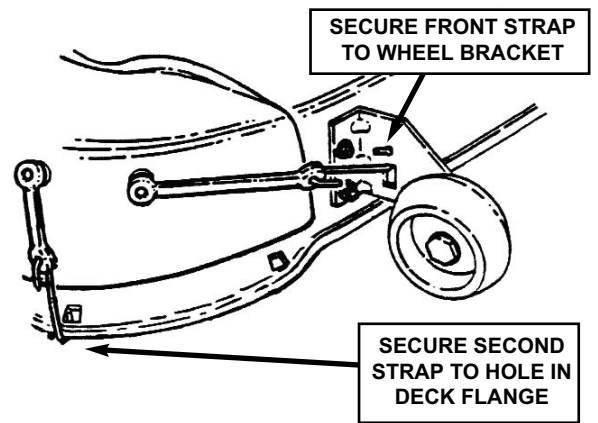
b. Use the existing tee nut for mounting the rear of the adapter to the side of the deck. See Figure 6.



**FIGURE 6**

c. Secure the front adapter mounting strap to the slots in the anti-scalp wheel bracket. Secure the other strap to the hole in the deck flange. See Figure 7.

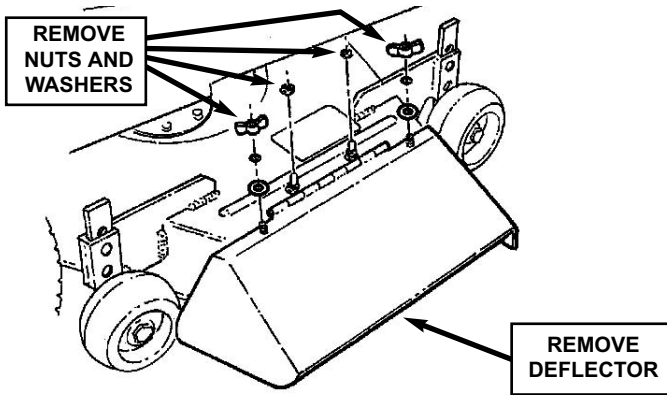
**NOTE:** Refer to Step 12 for instructions on installing the adapter mounting straps.



**FIGURE 7**

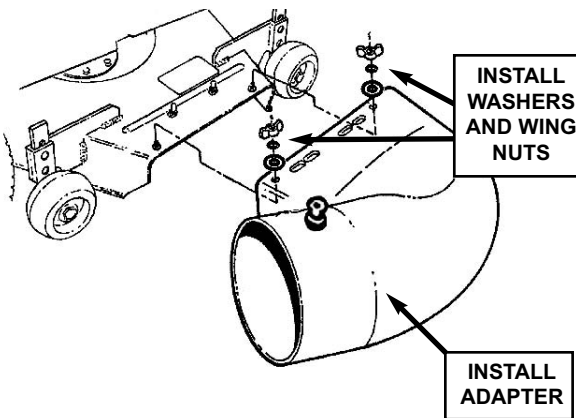
**STEP 5:** Install the bag adapter (42" Deck):

a. Remove the wing nuts, split lock washers, flat washers, and hex nuts that secure the deflector to the deck, and remove the deflector. See Figure 8.



**FIGURE 8**

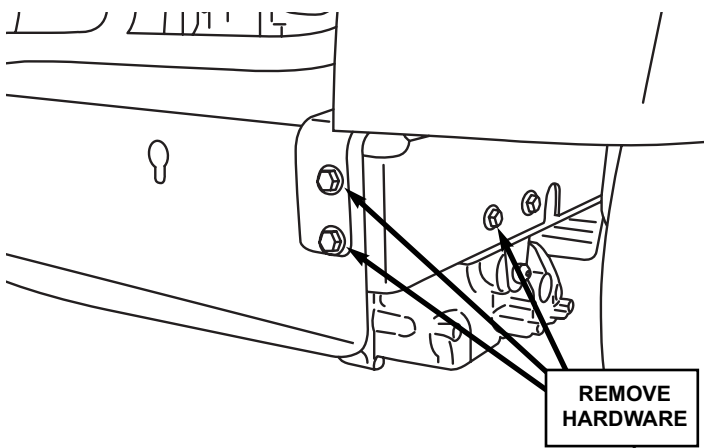
b. Fit the two top holes in the adapter over the wing nut studs. Secure the adapter with the flat washers, split lock washers and wing nuts removed in Step 5a. Tighten securely. See Figure 9.



**FIGURE 9**

**STEP 6:** Install the grass catcher support:

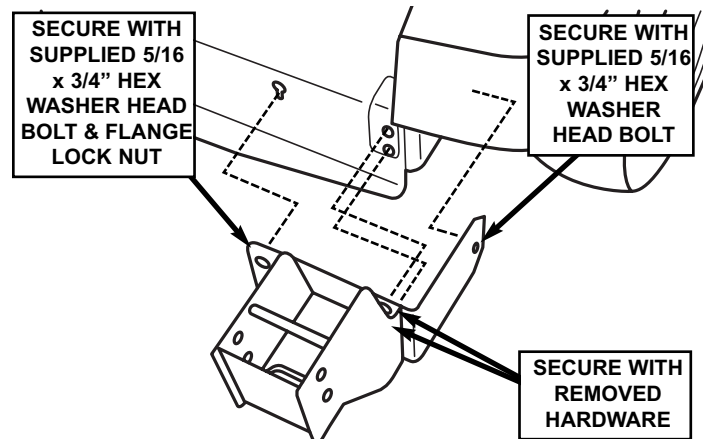
a. Remove the three noted bolts and nuts from the right rear of the unit. See Figure 10.



**FIGURE 10**

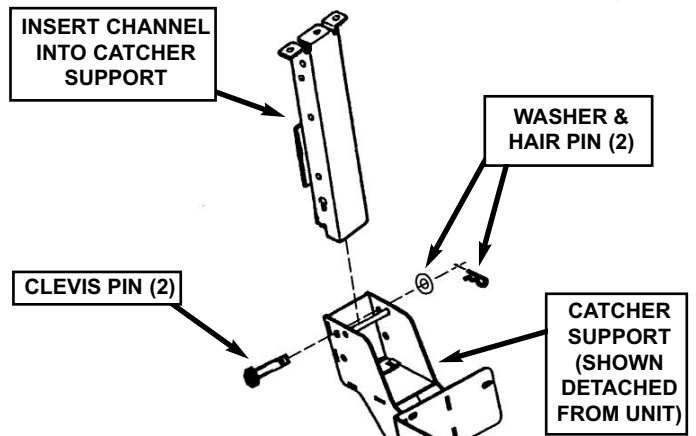
b. Install the catcher support onto the unit, securing with the hardware noted in Figure 11. Tighten all hardware securely.

**NOTE:** Be sure to reinstall any components that may have been removed when removing the hardware in Step 6a.



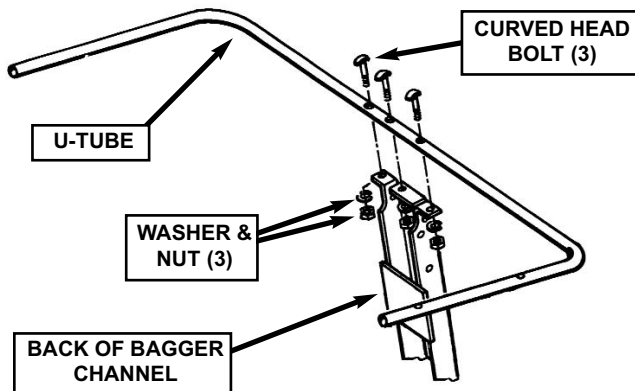
**FIGURE 11**

**STEP 7:** Insert the bagger channel into the grass catcher support, and secure with two 1/2 x 4-3/16" clevis pins, washers, and hair pins. See Figure 12.



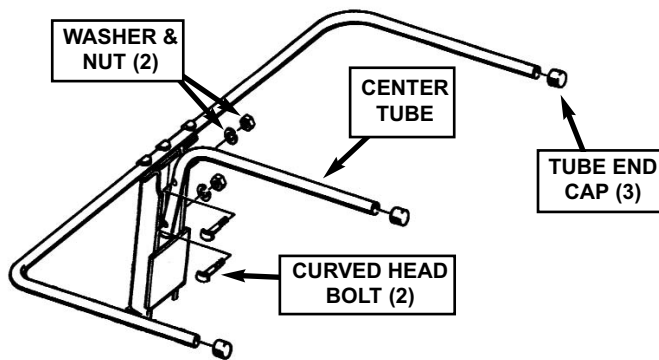
**FIGURE 12**

**STEP 8:** Install the U-tube onto the top of the bagger channel, securing with three 5/16-24 x 1-5/8" curved head bolts, split lock washers, and hex nuts. See Figure 13. Tighten hardware securely.



**FIGURE 13**

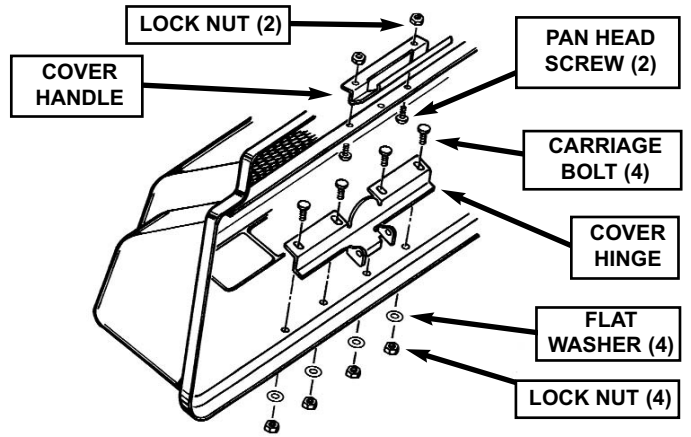
**STEP 9:** Install the center tube into the center of the bagger channel, securing with two 5/16-24 x 1-5/8" curved head bolts, split lock washers, and hex nuts. Tighten hardware securely. Also insert one tube end cap into each of the three open tube ends. See Figure 14.



**FIGURE 14**

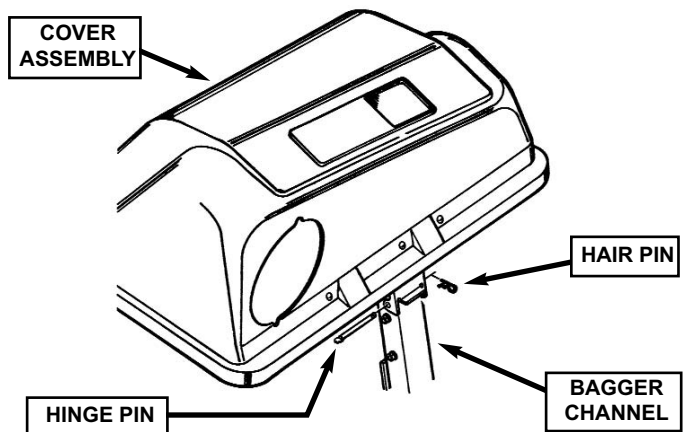
**STEP 10:** Install the cover hinge to the inside back of the cover assembly, securing with four 1/4 x 3/4" carriage bolts, flat washers, and lock nuts. Also, install the cover handle onto the screen support bar, behind the front of the cover assembly, securing with two pan head screws and lock nuts. See Figure 15.

**NOTE:** On some units, the cover handle has been pre-assembled onto the cover assembly.



**FIGURE 15**

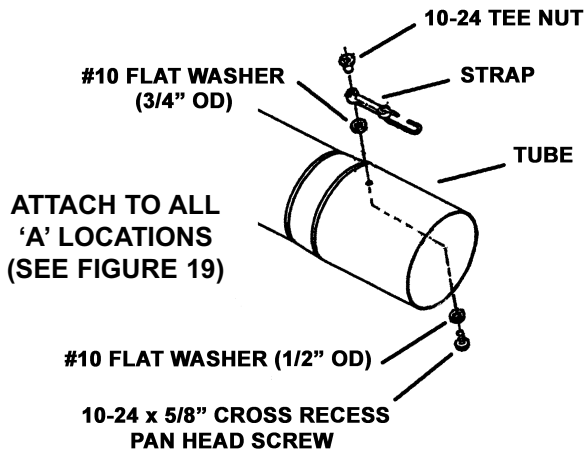
**STEP 11:** Attach the cover assembly to the bagger channel by aligning the holes in the cover hinge with the top set of holes in the bagger channel. Insert the hinge pin through the holes, and secure with a hair pin. See Figure 16.



**FIGURE 16**

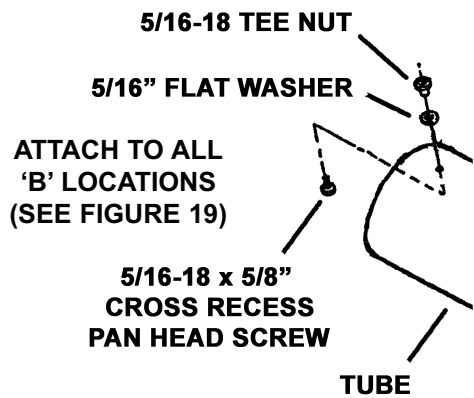
**STEP 12:** Assemble the discharge tubes:

**a.** Install one strap assembly to each of the locations marked 'A' in Figure 19. Insert one #10-24 x 5/8" pan head screw, fitted with one #10 x 1/2" OD flat washer, out through the hole in the tube or adapter. Secure with one #10 x 3/4" OD flat washer, strap, and #10-24 tee nut, tightening securely. See Figure 17.

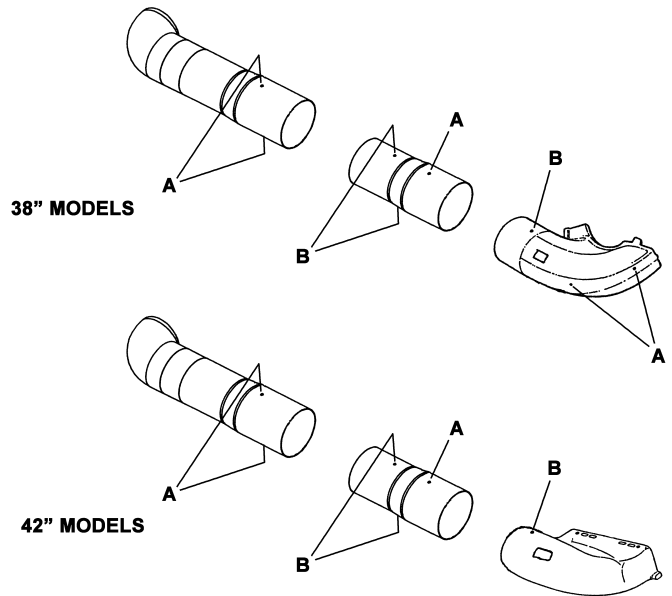


**FIGURE 17**

**b.** Install one tee nut assembly to each of the locations marked 'B' in Figure 19. Insert one 5/16 x 5/8" pan head screw out through the hole in the tube or adapter. Secure with one 5/16" flat washer and 5/16-18 tee nut, tightening securely. See Figure 18.



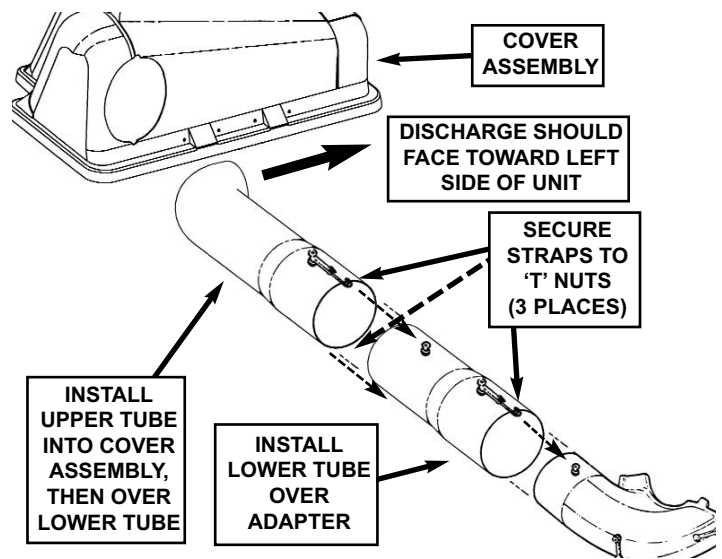
**FIGURE 18**



**FIGURE 19**

**c.** Install the large end of the lower tube (short, straight tube) onto the end of the adapter, and secure the strap on the tube to the tee nut on the adapter. See Figure 20.

**d.** Install the curved end of the upper tube into the hole in the cover assembly, making sure the discharge faces toward the left of the unit. Install the bottom of the upper tube onto the top of the lower tube, and secure the two straps on the upper tube to the two tee nuts on the lower tube. See Figure 20.

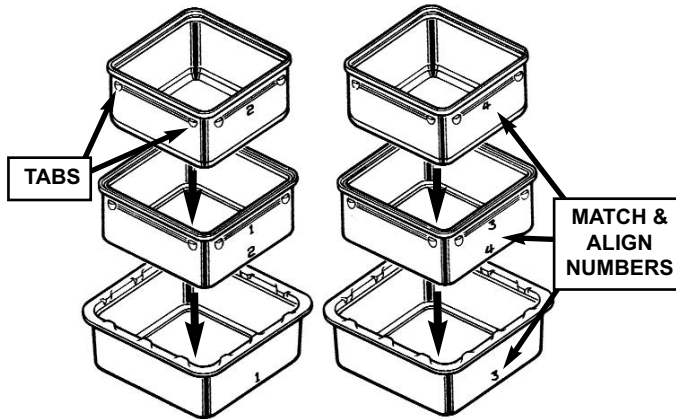


**FIGURE 20**

**STEP 13:** Assemble the grass containers:

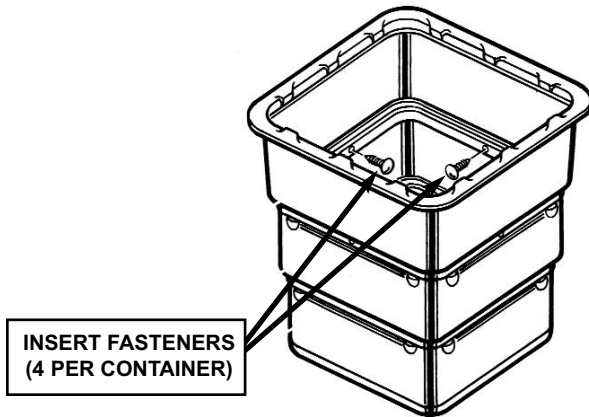
a. Match the numbers on the side of each container segment with its corresponding segment. '1's and '2's designate the first container, '3's and '4's designate the second. See Figure 21.

b. With the matched numbers aligned, insert the bottom segment of each container through the middle segment, and the middle segment through the top segment, until the tabs around the top of each segment lock the segment in place. See Figure 21.



**FIGURE 21**

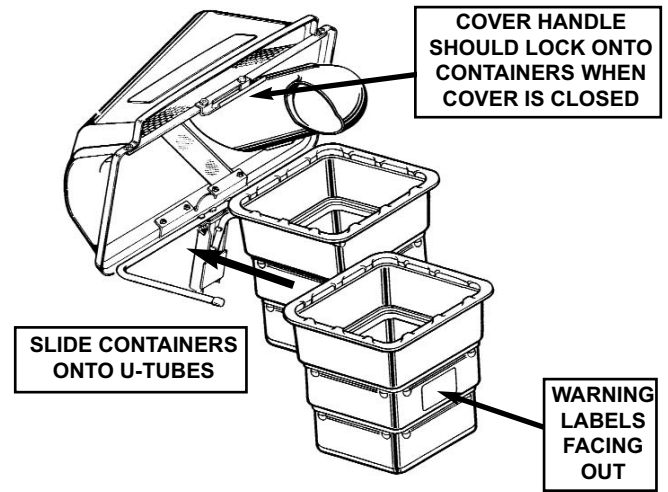
c. With the containers assembled, firmly insert one plastic fastener out through the aligned holes in all four sides where the top and middle segments meet. See Figure 22.



**FIGURE 22**

**STEP 14:** Flip open the cover assembly, then slide each container fully onto the U-tube assembly. See Figure 23.

**NOTE:** Make sure that the warning label on the side of each container is facing out.





**FIGURE 23**

When closing the cover, make sure that the cover handle locks under the lips of the containers.

**Assembly is complete.**

**Operation:**

	<b>WARNING</b>	
<p><b>To prevent injury or damage, always follow the operating instructions supplied with your machine when operating the bagger.</b></p>		

**To use the bagger:**

- Start the engine.
- Move the throttle control to the fast position.
- To fill the containers, always operate at a slow ground speed.

**To check and clean the discharge tubes:**

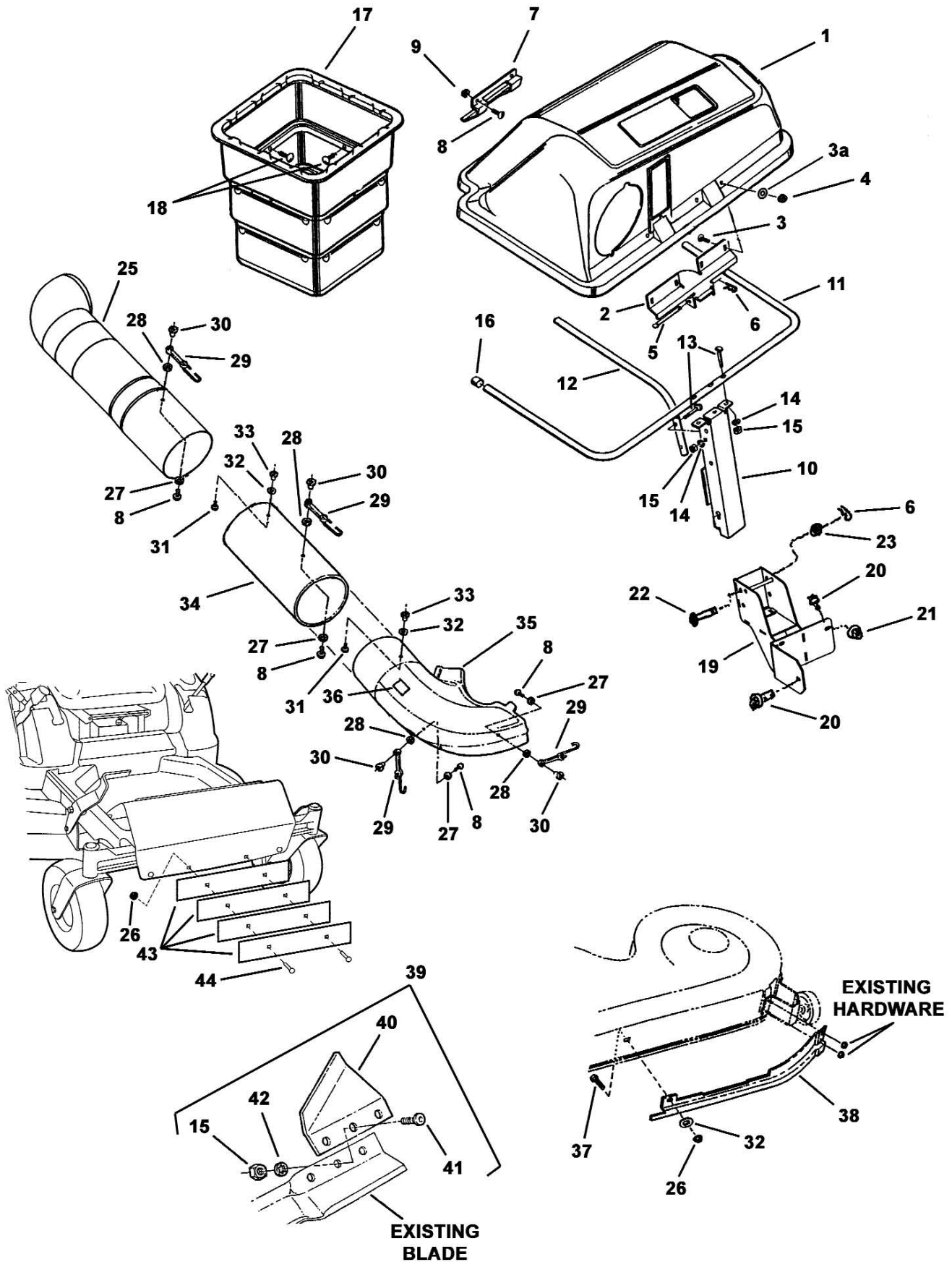
- Stop machine motion, turn off the blades, stop the engine.
- Disconnect the straps securing the discharge tubes, and remove the tubes.
- If needed, clear the discharge tubes of clogged debris, and clean with soap and water.
- Replace the discharge tubes.

**To empty the containers:**

- Stop machine motion, turn off the blades, stop the engine.
- Pull the cover handle back and raise the cover.
- Remove the containers and empty as needed.

**NOTE:** For easy removal of grass, use a 33 gallon plastic lawn bag inside each container.

# TWIN BAG CATCHER COMPONENTS - 38" RZT / JAVELIN

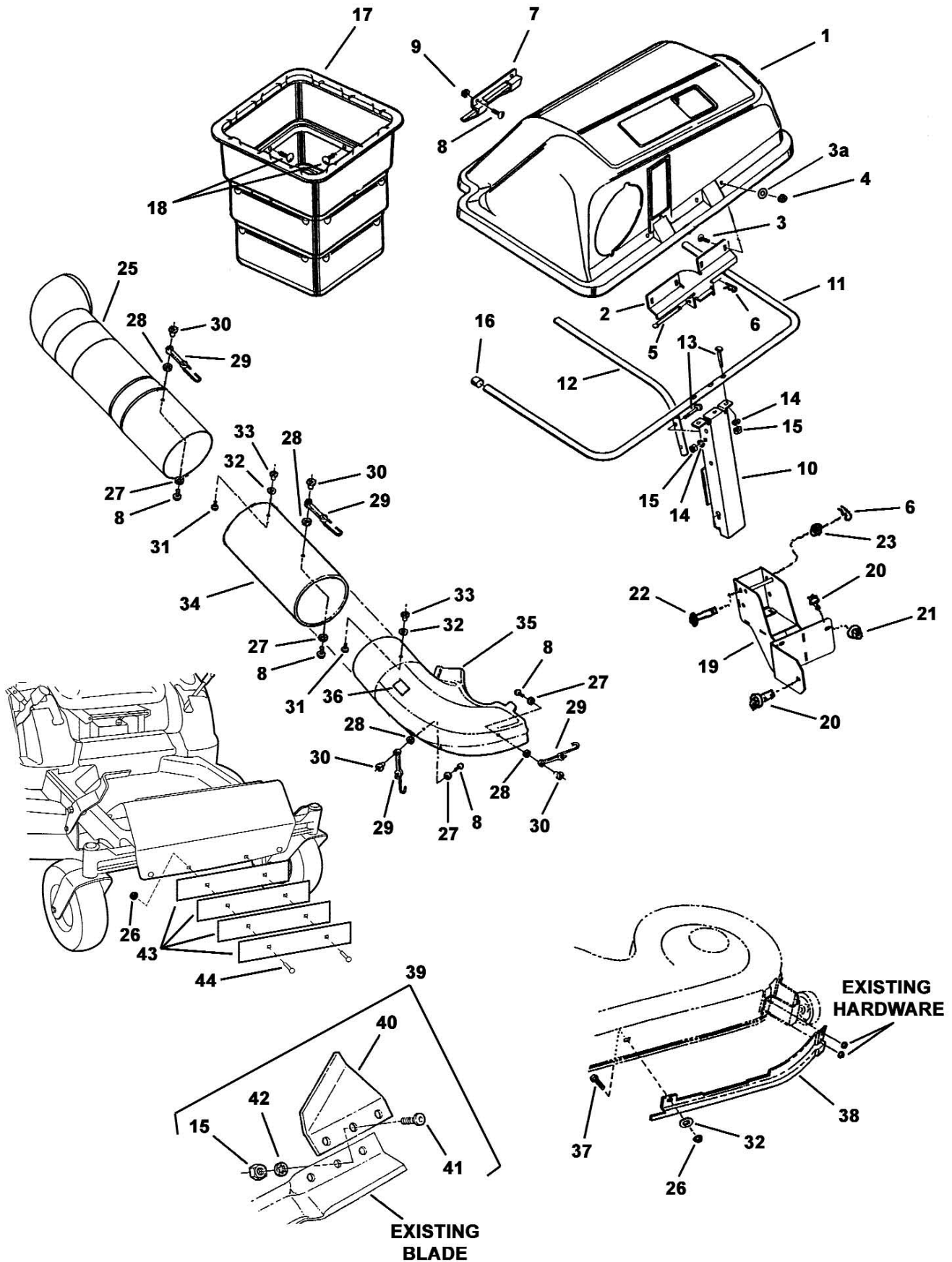




# TWIN BAG CATCHER COMPONENTS - 38" RZT / JAVELIN

ITEM NO.	PART NO.	QTY	DESCRIPTION
1	7100658	1	ASSY., TWIN COVER - 38/42
	7100659	1	COVER, TWIN - 38/42
	1673320	4	RIVET, LARGE FLANGE - .188 X .617
	1910531	4	WASHER, RIVET.188 (.20IDX.50OD)
	1732490	4	FASTENER - PUSH DIA .25 X .70
	1732488	1	SCREEN, TWIN COVER
	1732489	1	SUPPORT, SCREEN - TWIN COVER
	1732819	1	DECAL, WARNING
2	720524	1	HINGE, COVER
3	7091530	4	CARRIAGE BOLT, 1/4-20 X 3/4
3a	7091294	4	WASHER, SAE, 1/4
4	7091603	4	HEX CENTER LOCK NUT, 1/4-20
5	720525	1	PIN, COVER HINGE
6	7091503	3	PIN, HAIR, 3/32 X 1.5
7	720537	1	HANDLE, COVER
8	7036415	7	CROSS RECESS PAN HEAD, 10-24 X 5/8
9	7091290	2	HEX LOCK NUT, 10-24 UNC-2B, W/NYLON INSERT
10	1732867	1	WELD, CHANNEL SUPPORT
11	720529	1	TUBE, U
12	720530	1	TUBE, CENTER
13	720079	5	CURVED HEAD BOLT, 5/16-24 X 1.625
14	7091315	5	SPLIT LOCK WASHER, .32 X .58 X .08
15	7091297	11	HEX NUT, 5/16-24 GR5
16	720339	3	CAP, TUBE END
17	720553	1	ASSEMBLY, NESTABLE CONTAINER - TWIN BAG (SET OF 2)
18	7016704	8	PANEL FASTENER
19	7400094	1	WELDMENT, GRASS CATCHER SUPPORT - RZT
20	7091541	2	HEX WASHER HEAD SELF TAPPING BOLT, 5/16-18 X 3/4
21	7091601	1	FLANGE LOCK NUT, 5/16-18
22	7900034	2	PIN, CLEVIS - 1/2" X 4.160
23	7090250	2	SAE WASHER, 1/2
25	7100618	1	TUBE, UPPER - TWIN BAG - 38" & 42" RZT
26	7091575	3	HEX CENTER LOCK NUT, 5/16-18
27	7091552	5	FLAT WASHER, .219X.500X.049 BL
28	7036422	5	WASHER, FLAT- .190 I.D. X .75 O.D.
29	7036433	5	STRAP, MOUNTING BAG ADAPTER/TUBE
30	7036404	5	NUT, WELD-10/24 THREAD
31	7091833	3	CROSS RECESSED PAN HEAD SCREW, 5/16-18 X 5/8
32	7090188	4	FLAT WASHER, .34X.69X.08
33	7036543	3	TEENUT, 5/16-18 THREAD
34	7100645	1	TUBE, LOWER - TWIN BAG - 38" RZT
35	7500211	1	ASSY., BAGGER/DECAL 38" RZT
	7100608	1	DISCHARGE, CHUTE - 8.25 O.D. BAGGER 38" RZT
36	7046720	1	DECAL, CHUTE/DEFLECTOR

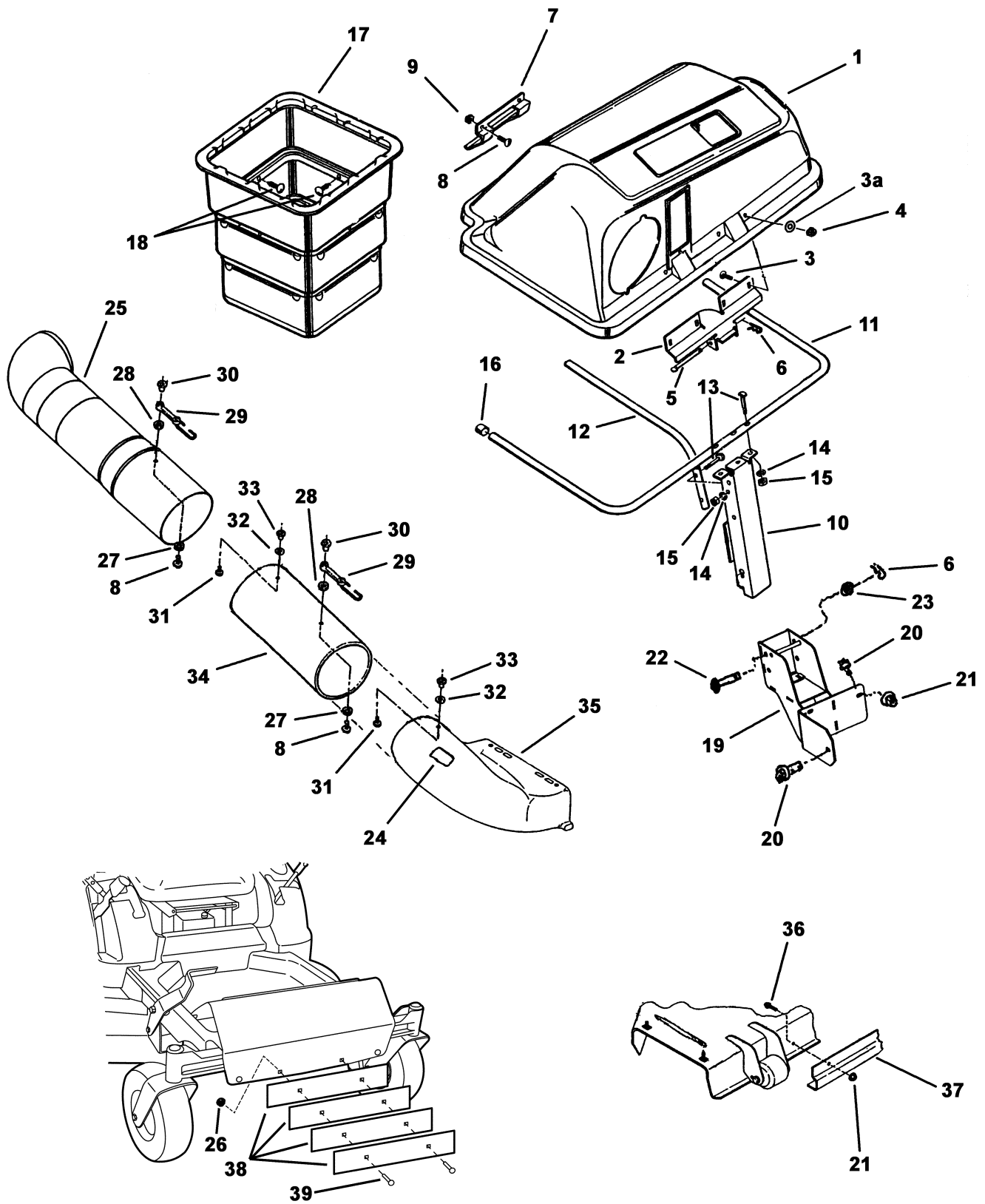
# TWIN BAG CATCHER COMPONENTS - 38" RZT / JAVELIN



## TWIN BAG CATCHER COMPONENTS - 38" RZT / JAVELIN

ITEM NO.	PART NO.	QTY	DESCRIPTION
37	7091318	1	HEX HEAD CAP SCREW, 5/16 X 3/4 GR5
38	7300369	1	BAFFLE, 38" DECK - RZT
39	7060480	2	AIR LIFT KIT - COMPLETE
40	7037723	4	AIR LIFT
41	7090228	6	OVAL HEAD MACHINE SCREW, 5/16-24 X .656
42	7090391	6	INTERNAL TOOTH LOCK WASHER 5/16
43	7300367	4	BALLAST-TWIN BAG CATCHER - RZT
44	7900039	2	CARRIAGE BOLT, 5/16-18 X 1.75 GR5

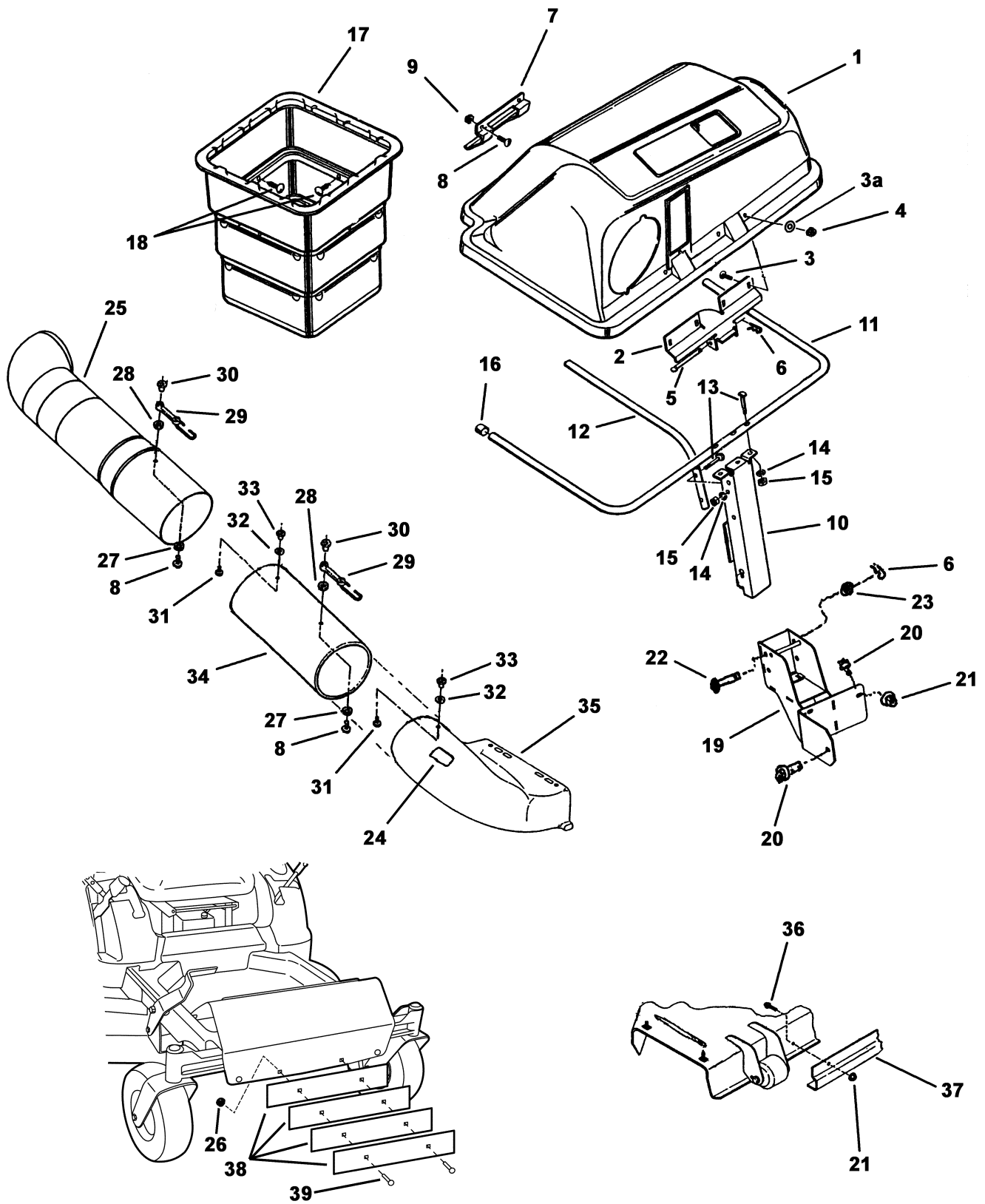
# TWIN BAG CATCHER COMPONENTS - 42" RZT / JAVELIN



## TWIN BAG CATCHER COMPONENTS - 42" RZT / JAVELIN

ITEM NO.	PART NO.	QTY	DESCRIPTION
1	7100658	1	ASSY., TWIN COVER - 38/42
	7100659	1	COVER, TWIN - 38/42
	1673320	4	RIVET, LARGE FLANGE - .188 X .617
	1910531	4	WASHER, RIVET.188 (.20IDX.50OD)
	1732490	4	FASTENER - PUSH DIA .25 X .70
	1732488	1	SCREEN, TWIN COVER
	1732489	1	SUPPORT, SCREEN - TWIN COVER
	1732819	1	DECAL, WARNING
2	720524	1	HINGE, COVER
3	7091530	4	CARRIAGE BOLT, 1/4-20 X 1/2
3a	7091294	4	WASHER, SAE, 1/4
4	7091603	4	HEX CENTER LOCK NUT, 1/4-20
5	720525	1	PIN, COVER HINGE
6	7091503	3	PIN, HAIR, 3/32 X 1.5
7	720537	1	HANDLE, COVER
8	7036415	5	CROSS RECESS PAN HEAD SCREW, 10-24 X 5/8
9	7091290	2	HEX LOCK NUT, 10-24 UNC-2B W/NYLON INSERT
10	1732867	1	WELD, CHANNEL SUPPORT
11	720529	1	TUBE, U
12	720530	1	TUBE, CENTER
13	720079	5	CURVED HEAD BOLT, 5/16-24 X 1.625
14	7091315	5	SPLIT LOCK WASHER, .32 X .58 X .08
15	7091297	5	HEX NUT, 5/16-24 GR5
16	720339	3	CAP, TUBE END
17	720553	1	ASSEMBLY, NESTABLE CONTAINER - TWIN CATCHER (SET OF 2)
18	7016704	8	PANEL FASTENER
19	7400094	1	WELDMENT, GRASS CATCHER SUPPORT - RZT
20	7091541	2	HEX WASHER SELF TAPPING BOLT, 5/16-18 X 3/4
21	7091601	3	FLANGE LOCK NUT, 5/16-18
22	7900034	2	PIN, CLEVIS - 1/2" X 4.160
23	7090250	2	SAE WASHER, 1/2
24	7046720	1	DECAL, CHUTE/DEFLECTOR
25	7100618	1	TUBE, UPPER - TWIN BAG - 38" & 42" RZT
26	7091575	2	HEX CENTER LOCK NUT, 5/16-18
27	7091552	3	FLAT WASHER, .219X.500X.049 BL
28	7036422	3	WASHER, FLAT- .190 I.D. X .75 O.D.
29	7036433	3	STRAP, MOUNTING BAG ADAPTER/TUBE
30	7036404	3	NUT, WELD, 10/24 THREAD
31	7091833	3	CROSS RECESSED PAN HEAD SCREW, 5/16-18 X 5/8
32	7090188	3	FLAT WASHER, .34X.69X.08
33	7036543	3	TEENUT, 5/16-18 THREAD
34	7100617	1	TUBE, LOWER - TWIN BAG - 42" RZT
35	7051663	1	CHUTE ASSY

# TWIN BAG CATCHER COMPONENTS - 42" RZT / JAVELIN



## TWIN BAG CATCHER COMPONENTS - 42" RZT / JAVELIN

ITEM NO.	PART NO.	QTY	DESCRIPTION
36	7091613	2	PAN HEAD MACHINE SCREW, 5/16-18 X 3/4
37	7300386	1	BAFFLE, 42" DECK - RZT
38	7300367	4	BALLAST-TWIN BAG CATCHER - RZT
39	7900039	2	CARRIAGE BOLT, 5/16-18 X 1.75 GR5

