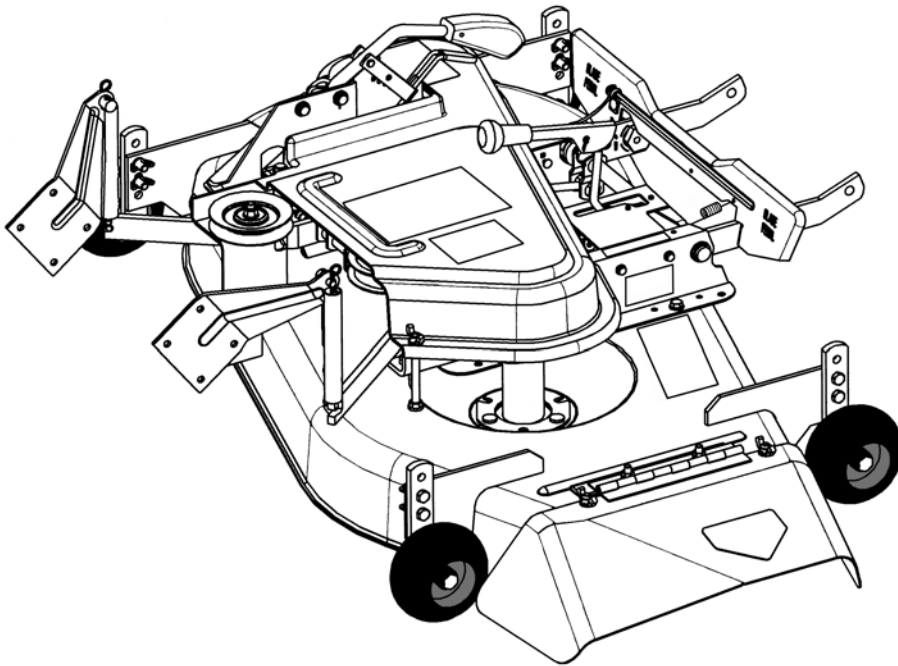


Parts Manual for

SNAPPER®

42" RER DUAL IDLER DECK KIT

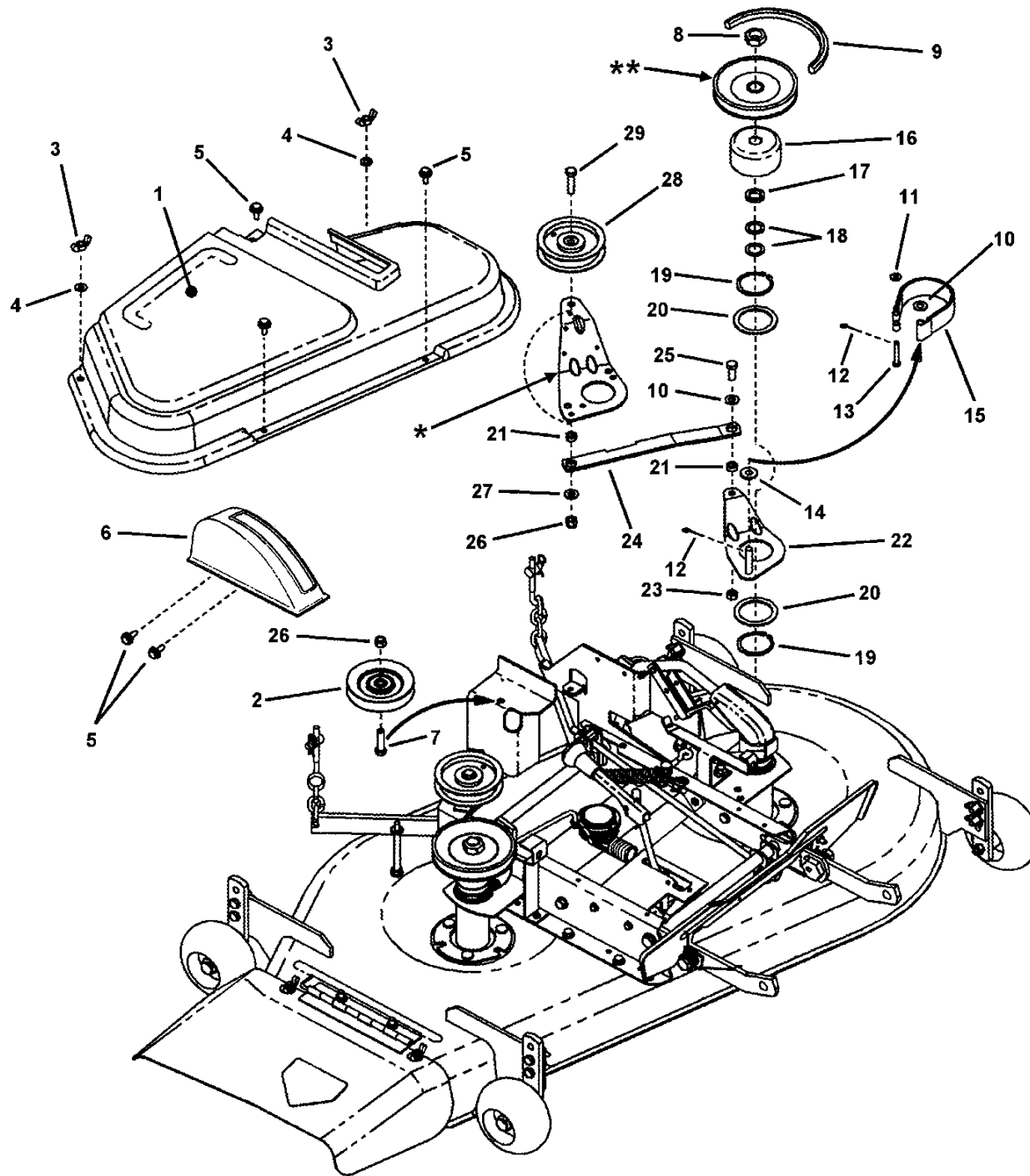
MODEL
63023
7063023



SNAPPER® McDonough, GA, 30253 U.S.A.

PAGE	GROUP
4	DECK COVER, BELT, BLADE BRAKE
6	RAILS, LIFT ARMS, CAM LIFT
10	SPINDLE BRAKE COMPONENTS
12	DECK HEIGHT ADJUSTMENT COMPONENTS
14	42" MOWER DECK ASSEMBLY
16	SPINDLE ASSEMBLY (42" DECK)
18	DECALS

DECK COVER, BELT, BLADE BRAKE



* See Spindle Brake Components page, item 3

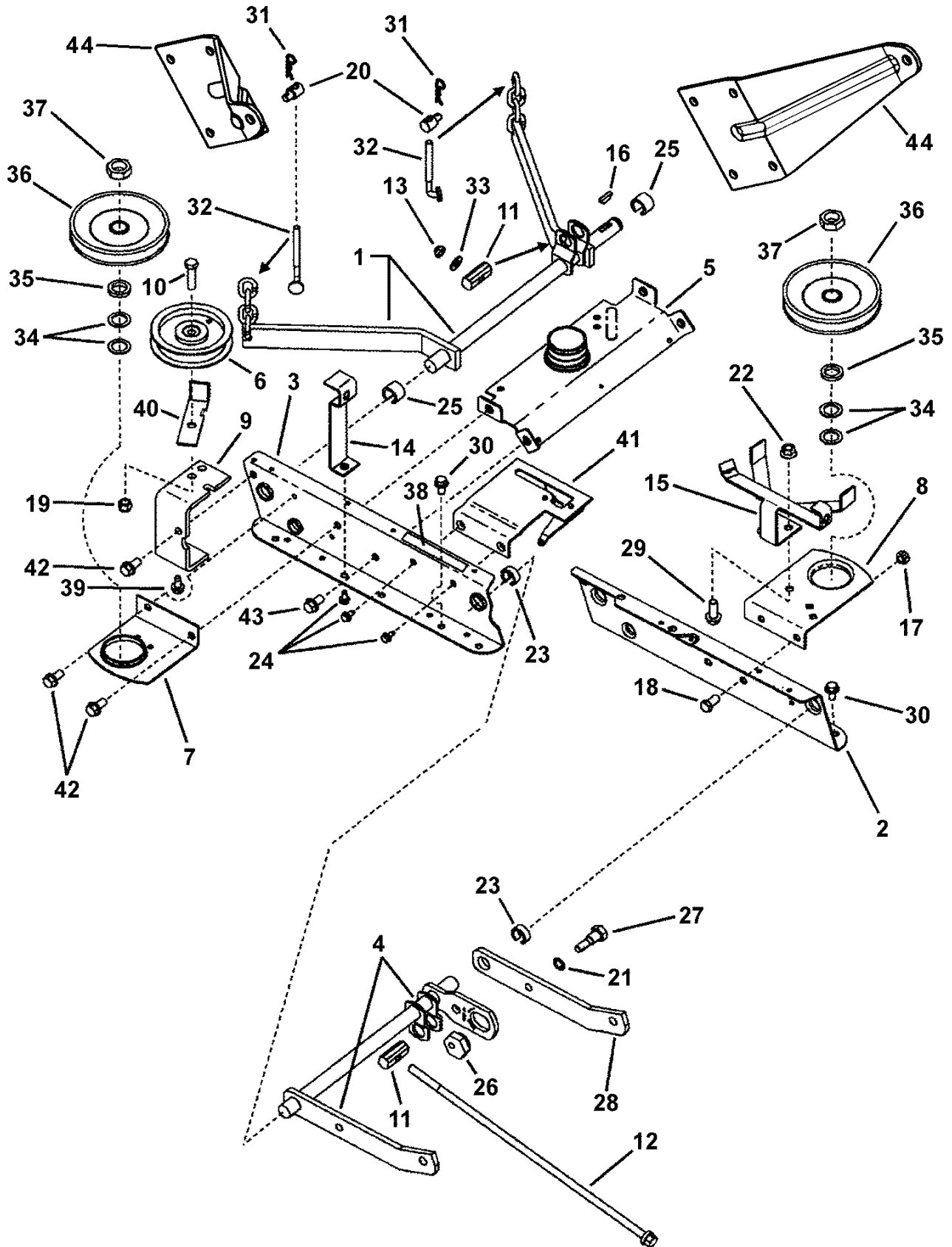
** See Rails, Lift Arms, Cam Lift page, item 36

DECK COVER, BELT, BLADE BRAKE

Item	Part No	Qty	Description	Note
1	7043834	1	BELT COVER, 42" RER	
2	7029624	1	IDLER PULLEY, Seam Welded	
3	7091537	2	WING NUT, 5/16-18	Was 90492
4	7090188	2	WASHER, 5/16" Flat	Was 91296
5	7090741	5	SCREW, 1/4-20 x 5/8" Self-Tap w/Loose Captured Washer	Was 91016
6	7027921	1	COVER, Quadrant	
7	7091497	2	SCREW, 3/8-16 x 1-1/2" Hex Head Cap, GR 5	
8	7074467	1	NUT, 3/4-16 Hex Jam, GR 8	
9	7028784	1	BELT, 5L Section, 47.64"	
10	7090122	2	WASHER, 3/8" SAE Flat	
11	7091294	1	WASHER, 1/4" Flat	Was 90055
12	7091597	2	PIN, 3/32 x 3/4" Cotter	Was 90037
13	7014304	1	PIN, 1/4 x 1-5/8 Clevis	
14	7014314	1	SPACER, .39 x 1.01 x .31 Nylon	
15	7034852	1	BRAKE BAND (Formed)	
16	7035378	1	DRUM, Brake Spindle	
17	7014526	1	SPACER	
18	7010935	2	WASHER, .77 x 1.13 x .06 Flat	
19	7010740	2	RING, 2" External Retaining	
20	7014795	2	WASHER, Nylon	
21	7014527	2	SPACER, .380 x .622/.625 x .25	
22	7047862	1	WELDMENT, Brake Arm	
23	7090289	1	NUT, 3/8-24 Hex Center Lock	
24	7034297	1	LINK	
25	7090160	1	SCREW, 3/8-24 x 1" Hex Head Cap, GR 5	
26	7091299	2	NUT, 3/8-16 Hex Nyloc	
27	7090122	2	WASHER, 3/8" SAE Flat	
28	7018574	1	IDLER, 4-1/8" Flat	
29	7091497	2	SCREW, 3/8-16 x 1-1/2" Hex Head Cap, GR5	

Footnotes:

RAILS, LIFT ARMS, CAM LIFT

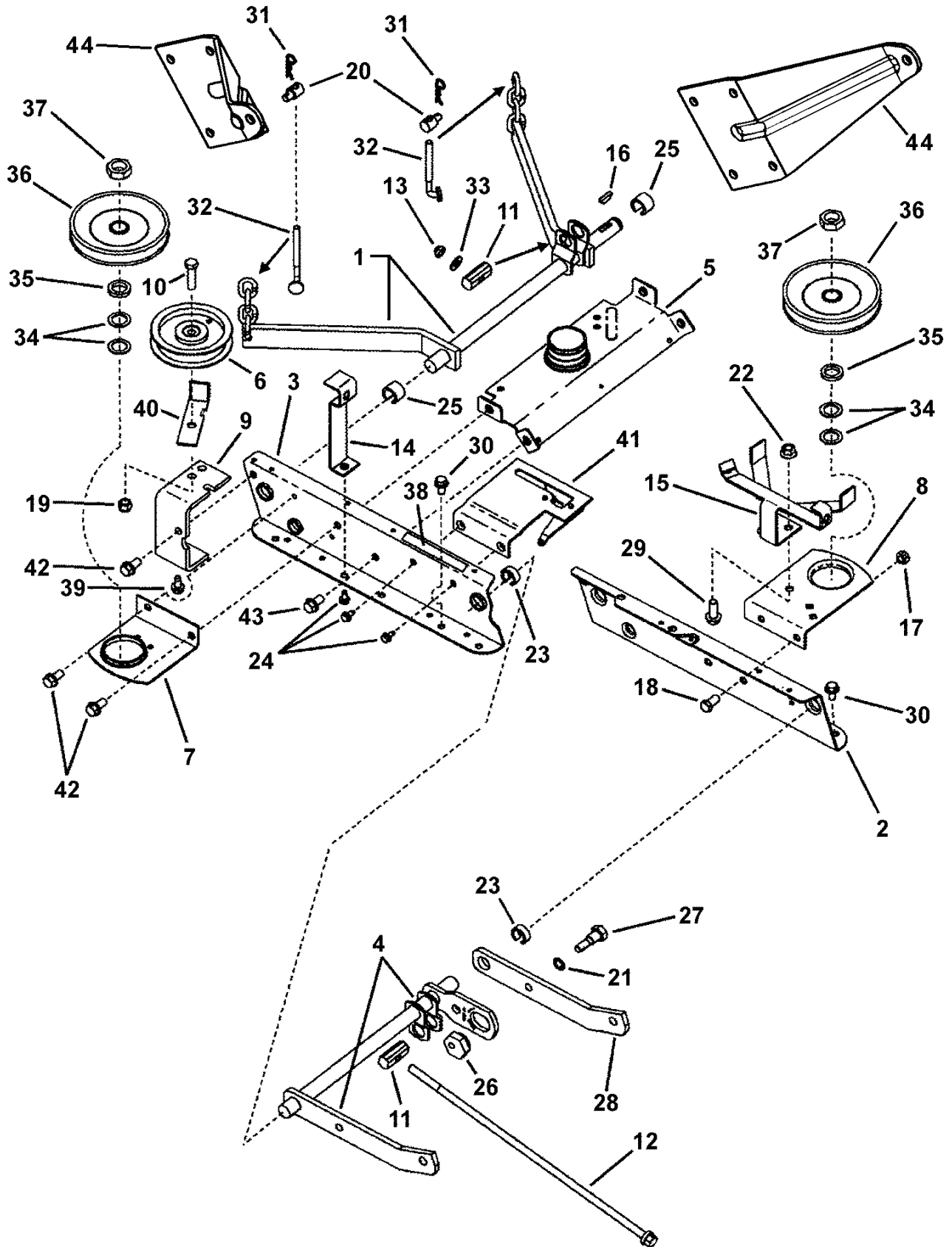


RAILS, LIFT ARMS, CAM LIFT

Item	Part No	Qty	Description	Note
1	7041248	1	ASSEMBLY, Rear Lift Arm	
2	7073269	1	RAIL, Deck Lift, Left Hand	
3	7036430	1	RAIL, Deck Lift, Right Hand	Was 43848
4	7041578	1	WELDMENT, Front Lift Arm	
5	7040502	1	WELDMENT, Top Brace	
6	7018574	2	IDLER, 4-1/8" Flat	
7	7034759	1	BRACE, R.H. Spindle	
8	7038096	1	BRACE, L.H. Spindle	
9	7034763	1	BRACE/IDLER Mounting Bracket	
10	7091497	1	SCREW, 3/8-16 x 1-1/2" Hex Head Cap, GR 5	
11	7034213	2	PIVOT, Leveling	
12	7027944	1	ROD, Leveling	
13	7090499	1	NUT, 3/8-16 Hex Top Lock	
14	7034857	1	BELT GUIDE, 42"	
15	7042613	1	GUIDE, Belt, 42" RER (weldment)	
16	7013861	1	KEY, 3/16 x 7/8" Woodruff	
17	7091585	3	NUT, 3/8-16 Hex Center Lock	
18	7090134	2	SCREW, 3/8-16 x 3/4" Hex Head Cap, GR 5	
19	7091299	1	NUT, 3/8-16 Hex Nyloc	
20	7028200	2	SWIVEL, Adjustment (with 5/16-18 internal thread)	
21	7090390	1	WASHER, 3/8" Internal Tooth Lock	
22	7091619	2	NUT, 3/8-16 Hex Flange Lock	Was 90613
23	7012067	2	RING, Front Lift Arm (Red)	
24	7090858	4	SCREW, 5/16-18 x 1/2" Hex Washer Self-Tap	
25	7012068	2	RING, Rear Lift Arm (Blue)	
26	7015447	1	ECCENTRIC, Leveling	
27	7015495	1	BOLT, 3/8-24 x 3/4" Shoulder, GR 5	
28	7032997	1	ARM, Front Lift (Left Side)	
29	7027198	1	BOLT, 3/8-16 x 1" Hex Flange Lock, GR 5	
30	7090606	4	BOLT, 5/16-18 x 5/8" Hex Flange Lock	
31	7091503	2	HAIR PIN, 3/32 x 1-1/2"	
32	7028728	2	ADJUSTER, Chain (5/16-18 thread)	
33	7090122	1	WASHER, 3/8" SAE Flat	
34	7010935	4	WASHER, .77 x 1.13 x .06 Flat	
35	7014526	2	SPACER	
36	7014532	2	PULLEY, 5" Outside Diameter	
37	7074467	2	NUT, 3/4-16 Hex Jam, GR 8	

Footnotes:

RAILS, LIFT ARMS, CAM LIFT



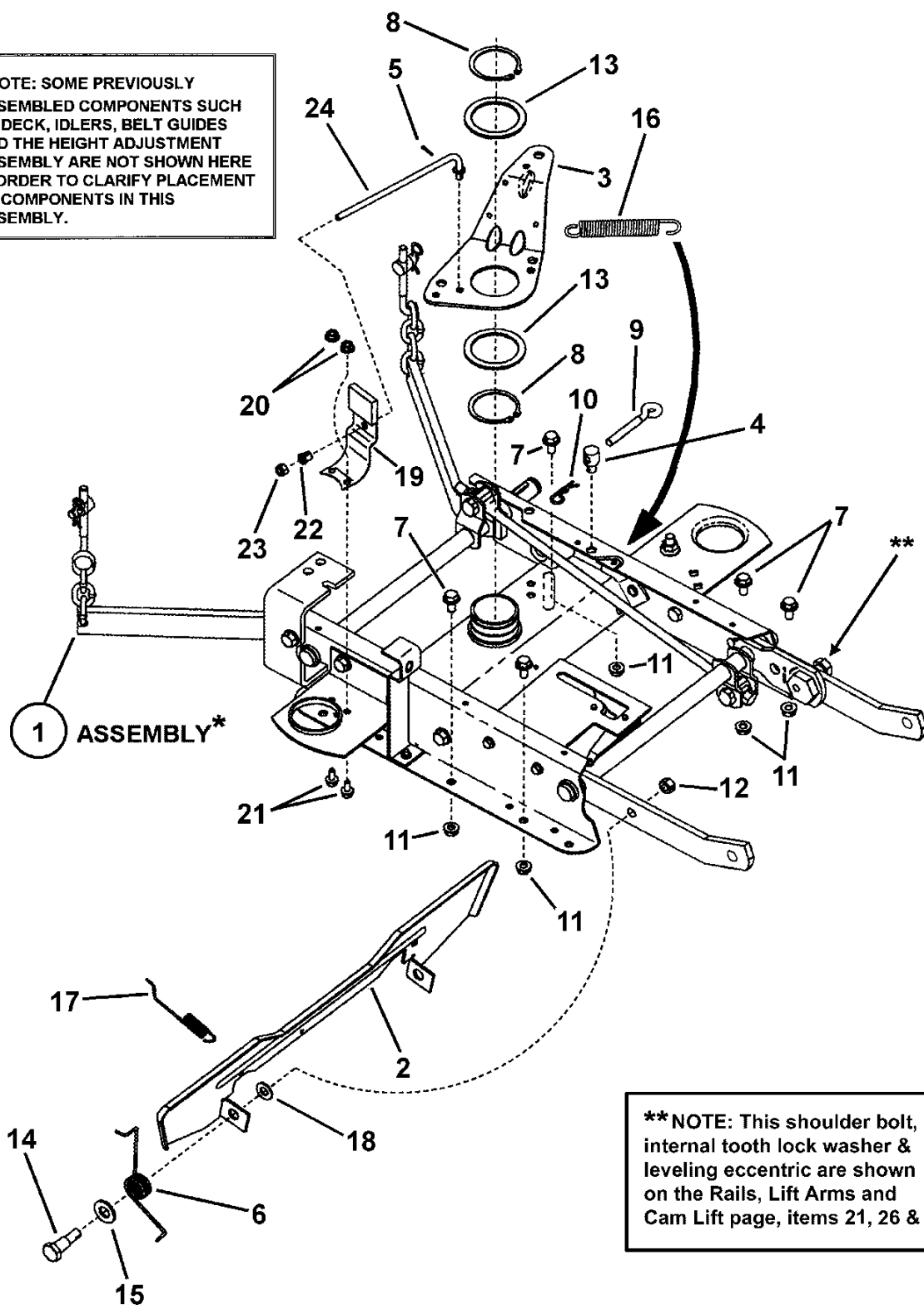
RAILS, LIFT ARMS, CAM LIFT

Item	Part No	Qty	Description	Note
38	7073066	1	DECAL, Blade Engagement, 42" Deck	
39	7090361	1	SCREW, 5/16-18 x 5/8" Hex Washer Self-Tap	
40	7032368	1	BELT GUIDE	
41	7058969	1	ASSEMBLY, Clutch Plate	
42	7090815	4	SCREW, 3/8-16 x 3/4" Hex Washer Self-Tap	
43	7091198	3	SCREW, 3/8-16 x 5/8" Hex Washer Self-Tap	
44	7034299	2	WING, Rear	

Footnotes:

SPINDLE BRAKE COMPONENTS

* NOTE: SOME PREVIOUSLY ASSEMBLED COMPONENTS SUCH AS DECK, IDLERS, BELT GUIDES AND THE HEIGHT ADJUSTMENT ASSEMBLY ARE NOT SHOWN HERE IN ORDER TO CLARIFY PLACEMENT OF COMPONENTS IN THIS ASSEMBLY.



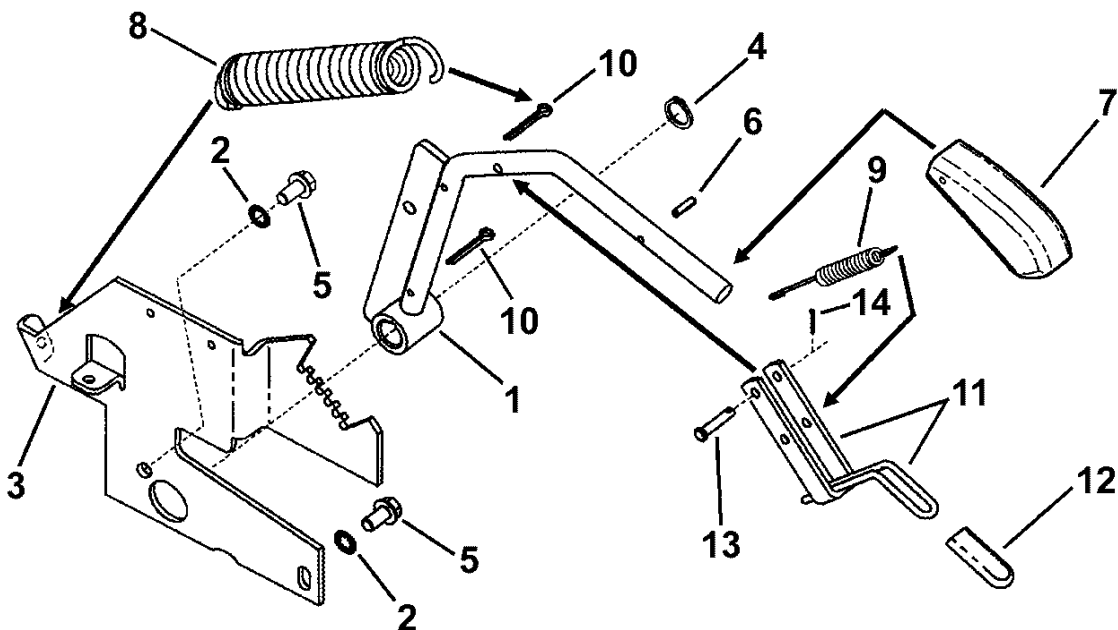
** NOTE: This shoulder bolt, internal tooth lock washer & leveling eccentric are shown on the Rails, Lift Arms and Cam Lift page, items 21, 26 & 27.

SPINDLE BRAKE COMPONENTS

Item	Part No	Qty	Description	Note
1	--	1	ASSEMBLY, Rail	(see Rails, Lift Arms, Cam Lift page for parts breakdown)
2	7073267	1	FOOT PEDAL, Blade Stop Control	
3	7034758	1	IDLER ARM	
4	7028200	1	SWIVEL, Adjustment (with 5/16-18 internal thread)	
5	7090673	1	PIN, 1/16 x 1/2" Cotter	
6	7015448	1	SPRING, Pedal	
7	7090606	5	BOLT, 5/16-18 x 5/8" Hex Flange Lock	
8	7010740	4	RING, 2" External Retaining	
9	7029244	1	EYE-BOLT, 5/16-18 x 3"	
10	7091503	1	HAIR PIN, 3/32 x 1-1/2"	
11	7091601	5	NUT, 5/16-18 Hex Flange Lock, GR 5	Was 90585
12	7090289	1	NUT, 3/8-24 Hex Center Lock	
13	7014795	2	WASHER, Nylon	
14	7015446	1	SHOULDER BOLT, 3/8-24 x 9/16"	
15	7090250	3	WASHER, 1/2" Flat SAE	
16	7024341	1	SPRING, Return	
17	7074649	1	SPRING, .072 Dia. Latch	
18	7090122	1	WASHER, 3/8" SAE Flat	
19	7034754	1	BRAKE PAD, Spring	
20	7091584	2	NUT 1/4-20 Hex Flange Lock	Was 90583
21	7090584	2	BOLT, 1/4-20 x 1/2" Hex Flange Lock	
22	7028786	1	BUSHING, 3/8" Nylon Snap	
23	7076978	1	NUT, 1/4-20 Hex Nyloc	
24	7028754	1	LINK, Spindle Brake (1/4-20 thread)	

Footnotes:

DECK HEIGHT ADJUSTMENT COMPONENTS

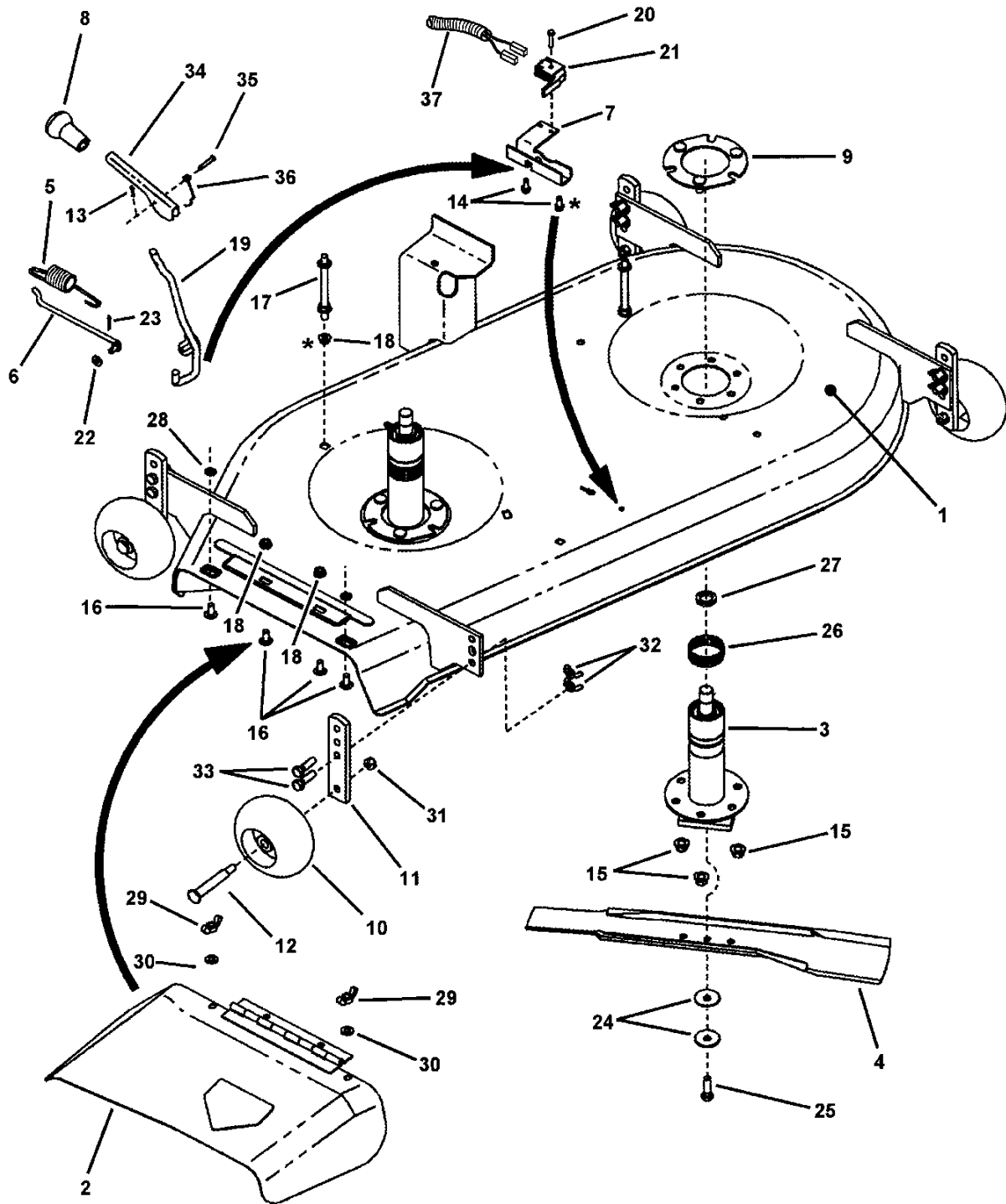


DECK HEIGHT ADJUSTMENT COMPONENTS

Item	Part No	Qty	Description	Note
1	7053300	1	LEVER, Height Adjustment Lift (weldment)	
2	7090390	2	WASHER, 3/8" Internal Tooth Lock	
3	7034069	1	QUADRANT, Lift Lever	
4	7010746	1	RING, .625 External Retaining	
5	7090815	6	SCREW, 3/8-16 x 3/4" Hex Washer Self-Tap	
6	7090844	1	ROLL PIN, 3/16 x 3/4"	
7	7023658	1	GRIP,Deck Height Adjustment Lever	
8	7024914	1	SPRING, Extension	
9	7012122	1	SPRING,Latch	
10	7091515	2	PIN, 3/16 x 1-1/2" Cotter	Was 90753
11	7041581	1	LATCH (weldment)	
12	7026286	1	GRIP, Lift Latch	
13	7011021	1	PIN, 1/4 x 1-1/4" Clevis	
14	7090360	1	PIN, 1/16 x 3/4" Cotter	

Footnotes:

42" MOWER DECK ASSEMBLY



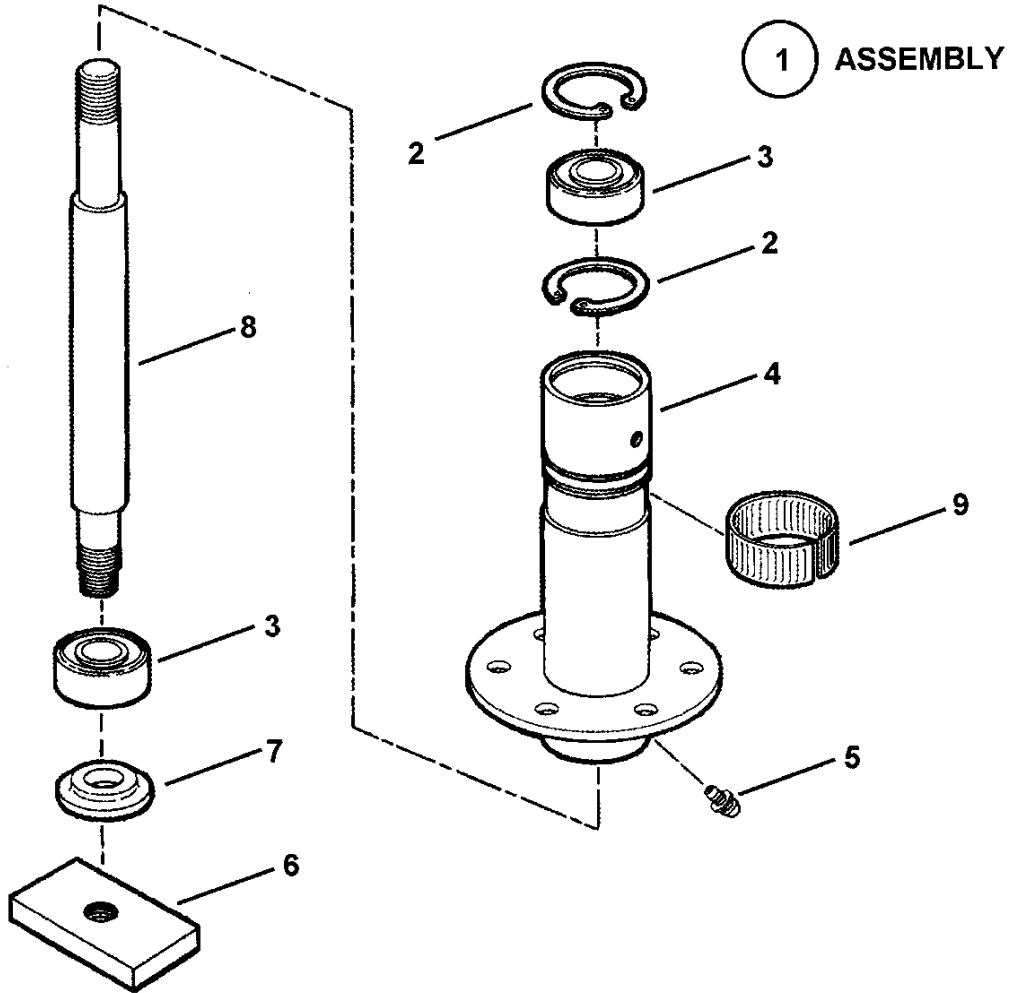
* NOTE: THE HEADS OF THESE FASTENERS ARE LOCATED INSIDE THE DECK.

42" MOWER DECK ASSEMBLY

Item	Part No	Qty	Description	Note
1	7063040	1	42" DECK WELDMENT, Anti-Scalp	Was 42645
2	7051401	1	ASSEMBLY, Side Chute (incl. decal 26831)	
3	7059628	2	ASSEMBLY, Spindle	
4	7026691	2	BLADE, 21" Standard Lift	
5	7014168	1	SPRING, Blade Handle	
6	7012055	1	ROD, Idler Control	
7	7038021	1	MOUNT, Handle/Switch	
8	7046874	1	GRIP, Handle	
9	7053034	2	ASSEMBLY, Spindle Ring	
10	7029264	4	WHEEL, Gage	
11	7035835	4	POST, Anti-Scalp	
12	7029265	4	SHOULDER BOLT, 3/8-16 x 2.62 Hex Head	
13	7091597	1	PIN, 3/32 x 1/2" Cotter	Was 90555
14	7091819	2	SCREW, 1/4-20 x 5/8" Hex Washer Head Self-Tap	Was 90362
15	7091619	6	NUT, 3/8-16 Hex Flange Lock	Was 90613
16	7091508	4	BOLT, 5/16-18 x 3/4" Short Square Neck Carriage, GR 5	
17	7029303	2	STANDOFF, 3-1/2" (5/16-18 & 3/8-16 threads)	
18	7091619	6	NUT, 3/8-16 Hex Flange Lock	Was 90613
19	7059254	1	WELDMENT, Blade Engagement Handle	
20	7090299	1	SCREW, #10-32 x 1" Hex Washer Head Self-Tap	
21	7018524	1	SWITCH, Deck Interlock (NO)	
22	7091294	1	WASHER, 1/4" Flat	Was 90055
23	7091597	1	PIN, 3/32 x 3/4" Cotter	Was 90037
24	7012063	4	WASHER, 13/32" I.D. Cone	
25	7090824	1	SCREW, 3/8-24 x 1-1/4 Hex Head Cap GR 5	
26	7012670	2	TOLERANCE RING, 2"	
27	7014526	2	SPACER	
28	7011791	2	RETAINER, 5/16" Bolt	
29	7091537	2	WING NUT, 5/16-18	Was 90492
30	7090188	2	WASHER, 5/16" Flat	Was 91296
31	7091585	4	NUT, 3/8-16 Hex Center Lock	
32	7091049	4	WING-NUT, 3/8-16 Nyloc	
33	7091328	4	SCREW, 3/8-16 x 1-1/4" Hex Head Cap, GR 5	
34	7046567	1	HANDLE, Blade Engagement	
35	7091974	1	PIN, 3/16 x 1" Clevis	
36	7046648	1	SPRING, Torsion	
37	7028386	1	DECK WIRE	

Footnotes:

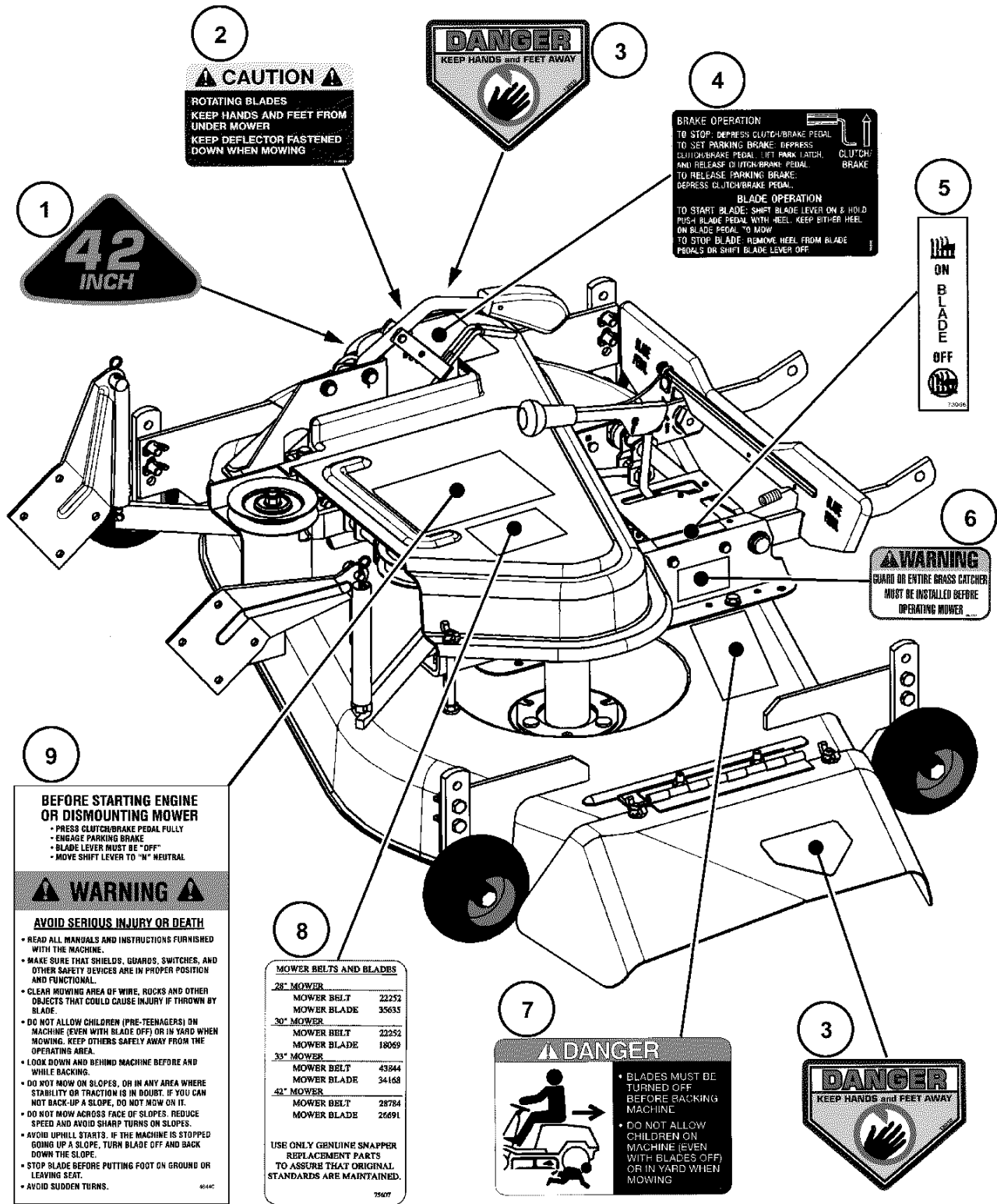
SPINDLE ASSEMBLY (42" DECK)



SPINDLE ASSEMBLY (42" DECK)

Item	Part No	Qty	Description	Note
1	7059628	2	ASSEMBLY, Spindle	<i>includes items 2 thru 8</i>
2	7012491	2	RING, 1.85" Internal Retaining	
3	7013313	2	BEARING, Spindle	
4	7051469	1	HOUSING, Spindle (weldment)	<i>Was 47849</i>
5	7010817	1	LUBE FITTING, 3/16" Press-In	
6	7032294	1	HOLDER, Blade	
7	7014407	1	WASHER, Spindle	
8	7027640	1	SPINDLE SHAFT (9.5" Length)	
9	7012670	2	TOLERANCE RING, 2"	

Footnotes:



DECALS

Item	Part No	Qty	Description	Note
1	7024910	1	DECAL - 42 INCH	
2	7014852	2	DECAL, Caution	<i>not part of kit</i>
3	7013010	2	DECAL, Danger, Cut Finger	<i>or 26831</i>
4	7028995	1	DECAL, Brake/Blade Operation	
5	7073066	1	DECAL, Blade Engagement, 42" Deck	
6	7046720	1	DECAL, Chute/Deflector	
7	7074481	1	DECAL, No Mow In Reverse	
8	7075607	1	DECAL, Service Parts, RER Domestic	<i>not part of kit</i>
9	7046440	1	DECAL, Safety Instructions	

Footnotes:

Parts Manual for
SNAPPER[®]

42" RER DUAL IDLER DECK KIT

IT IS THE POLICY OF SNAPPER TO IMPROVE ITS PRODUCTS
WHENEVER IT IS POSSIBLE AND PRACTICAL TO DO SO. WE
RESERVE THE RIGHT TO MAKE CHANGES OR ADD IMPROVEMENTS
AT ANY TIME WITHOUT INCURRING ANY OBLIGATION TO MAKE
SUCH CHANGES ON PRODUCTS MANUFACTURED PREVIOUSLY.

SNAPPER McDonough, GA, 30253 U.S.A.