

ATTACHMENT ILLUSTRATED PARTS LIST



ATTACHMENT

Mfg. No. Description
1694295 Single Stage Snowthrower, 42"

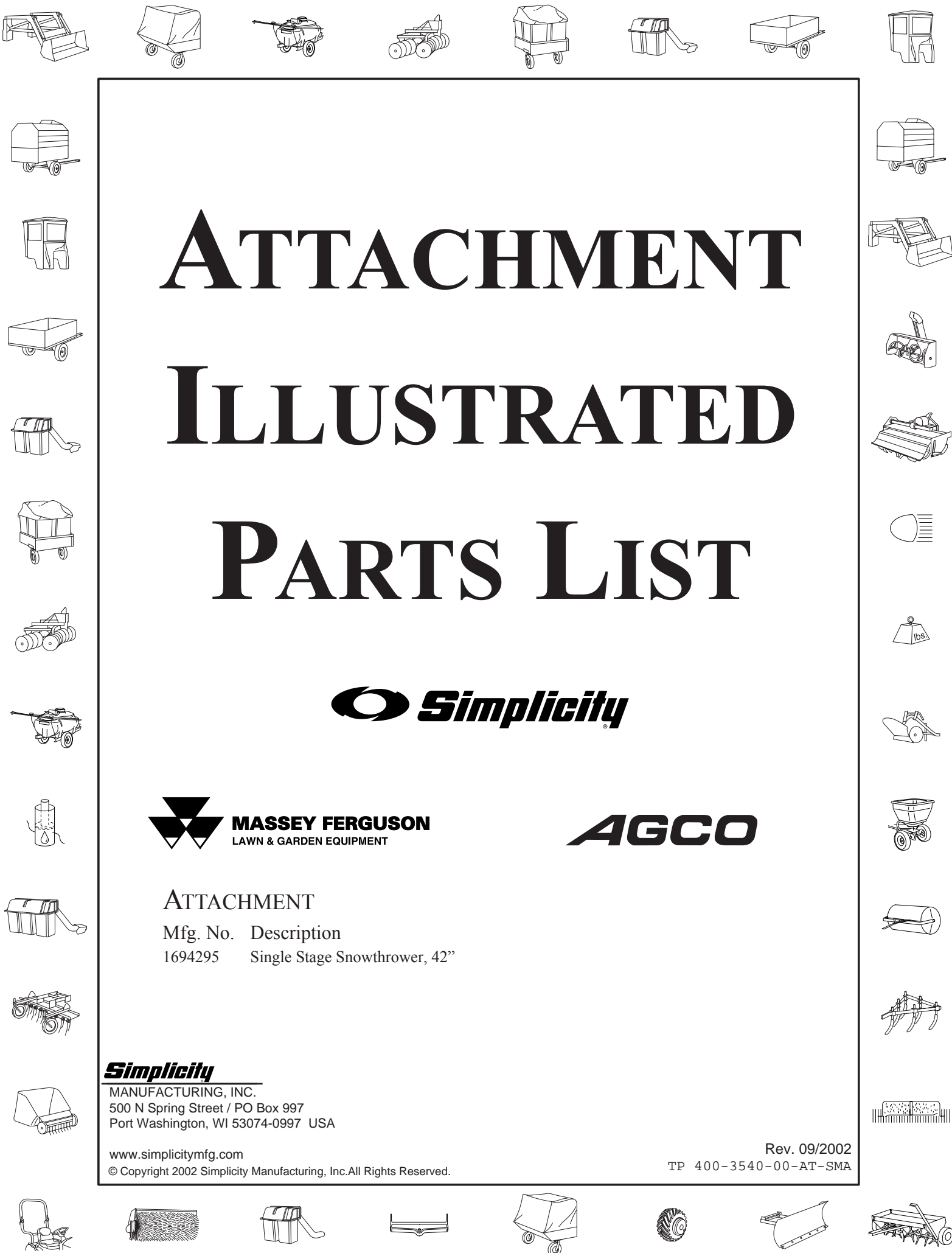
Simplicity

MANUFACTURING, INC.
500 N Spring Street / PO Box 997
Port Washington, WI 53074-0997 USA

www.simplicitymfg.com
© Copyright 2002 Simplicity Manufacturing, Inc. All Rights Reserved.

Rev. 09/2002

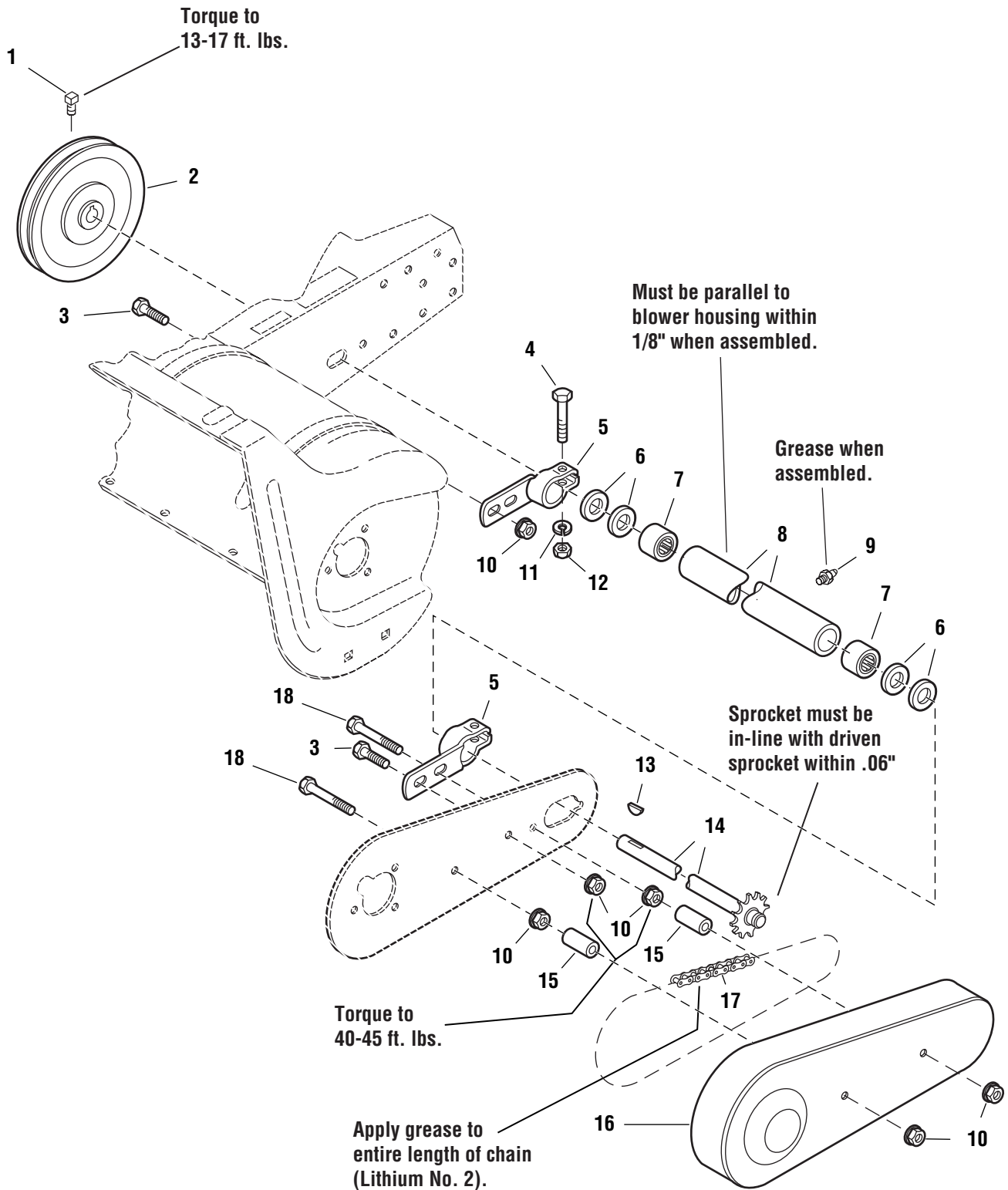
TP 400-3540-00-AT-SMA



Drive Group

986022

NOTE: Unless noted otherwise, use the standard hardware torque specification chart.



The above parts group applies to the following Mfg. Nos.:

1694295 Single Stage Snowthrower, 42"

Drive Group

REF NO.	PART NO.	QTY.	DESCRIPTION
1	1928721	1	SETSCREW, 5/16-18 x 1/2, G8
2	1607637	1	PULLEY
3	1934654	3	CAPSCREW, Hex Head Whizlock, 3/8-16 x 1
4	1922127	2	CAPSCREW, Hex Head 5/16-18 x 1-3/4
5	1666145	2	CLAMP
6	8061012	4	WASHER
7	154258	2	BEARING, Needle
8	1650955	1	HOUSING ASSEMBLY, w/Bearings (Includes Ref. No. 2)
9	921133	1	FITTING, Grease
10	1928352	7	LOCKNUT, Flange, 5/16-18
11	1917356	2	LOCKWASHER, 5/16
12	1917372	2	NUT, Hex, 5/16-18
13	905123	1	KEY
14	106757	1	SHAFT & SPROCKET ASSEMBLY, 12 Tooth
15	1669105	2	SPACER
16	1676738	1	GUARD, Chain
17	171242	1	CHAIN (Auger Drive), #40, 32" Long, 64 Pitch
18	1960244	2	CAPSCREW, Hex Head Whizlock, 3/8-16 x 2-3/4

Footnotes:

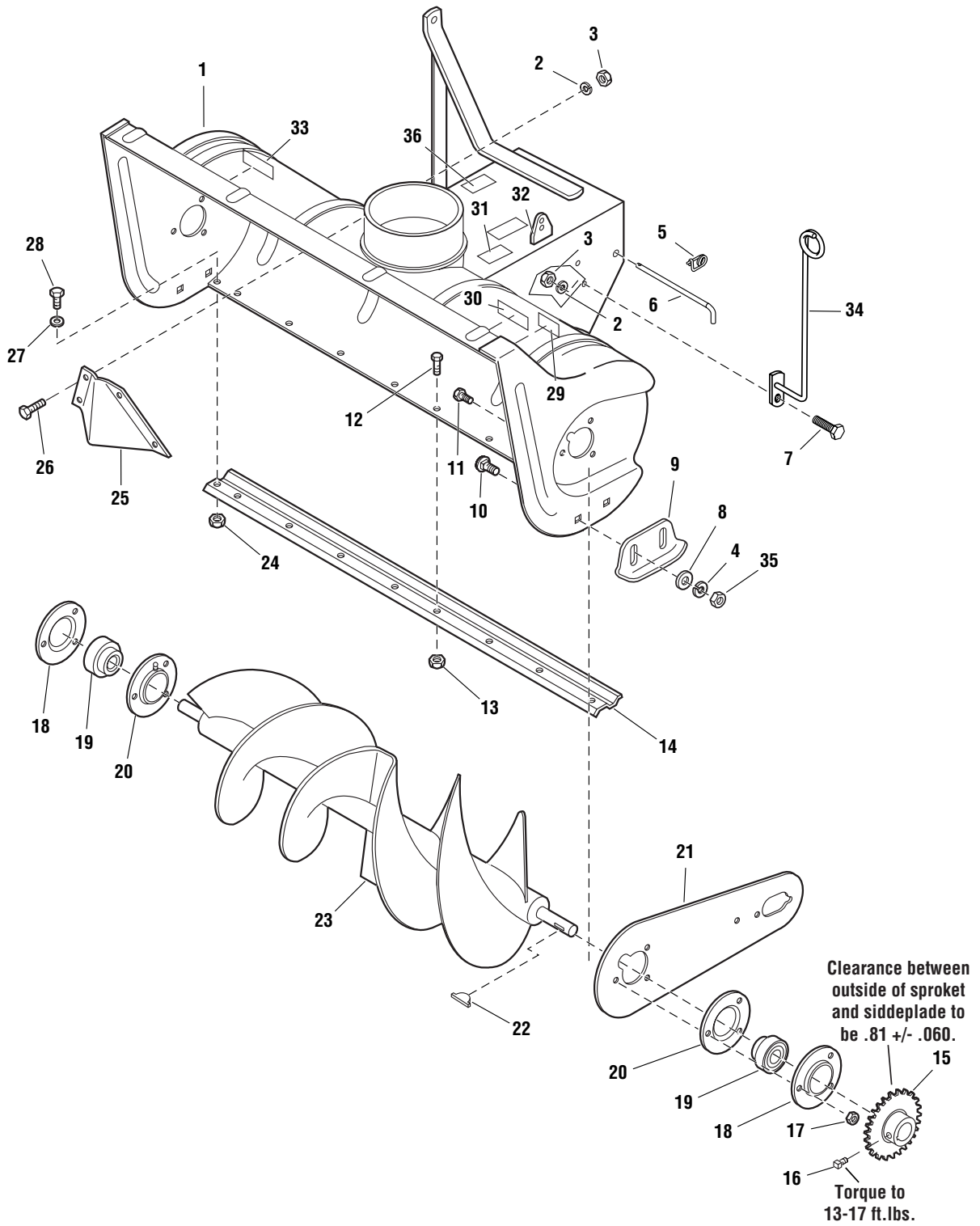
The above parts group applies to the following Mfg. Nos.:

1694295 Single Stage Snowthrower, 42"

Body & Rotor Group

986182

NOTE: Unless noted otherwise,
use the standard hardware torque
specification chart.



The above parts group applies to the following Mfg. Nos.:

1694295 Single Stage Snowthrower, 42"

Body & Rotor Group

REF NO.	PART NO.	QTY.	DESCRIPTION
1	1722979	1	BODY & FRAME ASSEMBLY
2	1917356	5	LOCKWASHER
3	1917372	5	NUT, Hex, 5/16-18
4	1916965	4	LOCKWASHER, 3/8
5	176012	1	PIN, Safety
6	1723309	1	PIN, Clevis
7	1921333	1	CAPSCREW, Hex Head, 5/16-18 x 1
8	1924940	4	WASHER
9	1713424	2	SKID & WEAR ASSEMBLY
10	1931348	4	CARRIAGE BOLT, 3/8-16 x 3/4
11	1923325	6	CAPSCREW, Hex Head, 5/16-18 x 7/8
12	1921959	8	CAPSCREW, Hex Head, 1/4-20 x 5/8
13	1923358	8	NUT, Hex Centerlock, 1/4-20
14	106746	1	BLADE, Scraper, 42"
15	106653	1	SPROCKET 24 Teeth
16	1928721	1	SCREW, Set, Square Head, Cup Point 5/16-18 x 1/2, G8
17	1935048	6	NUT, Hex Flange Lock, 5/16-18
18	172278	2	FLANGE, Bearing
19	173934	2	BEARING
20	172279	2	FLANGE, Bearing
21	1676632	1	PLATE, Side
22	151040	1	KEY
23	1721840	1	ROTOR ASSEMBLY
24	1923362	2	NUT, Hex Centerlock, 5/16-18
25	106774	1	DEFLECTOR
26	1925205	4	CAPSCREW, Hex Head, 5/16-18 x 5/8
27	1919326	2	WASHER
28	1921332	2	CAPSCREW, Hex Head, 5/16-18 x 3/4
29	1716532	1	DECAL, Danger Auger
30	1716531	1	DECAL, Caution
31	*	1	DECAL, Model Number & Serial Number, Not Serviced
32	*	1	DECAL, OPEI, Not Serviced
33	1716540	1	DECAL, Caution, Rear Wheel Weights Required
34	1717591	1	GUIDE, Cable
35	1916950	4	NUT, Hex, 3/8-16
36	1717136	1	DECAL, Caution, Spring Tension

Footnotes:

* Not a service part.

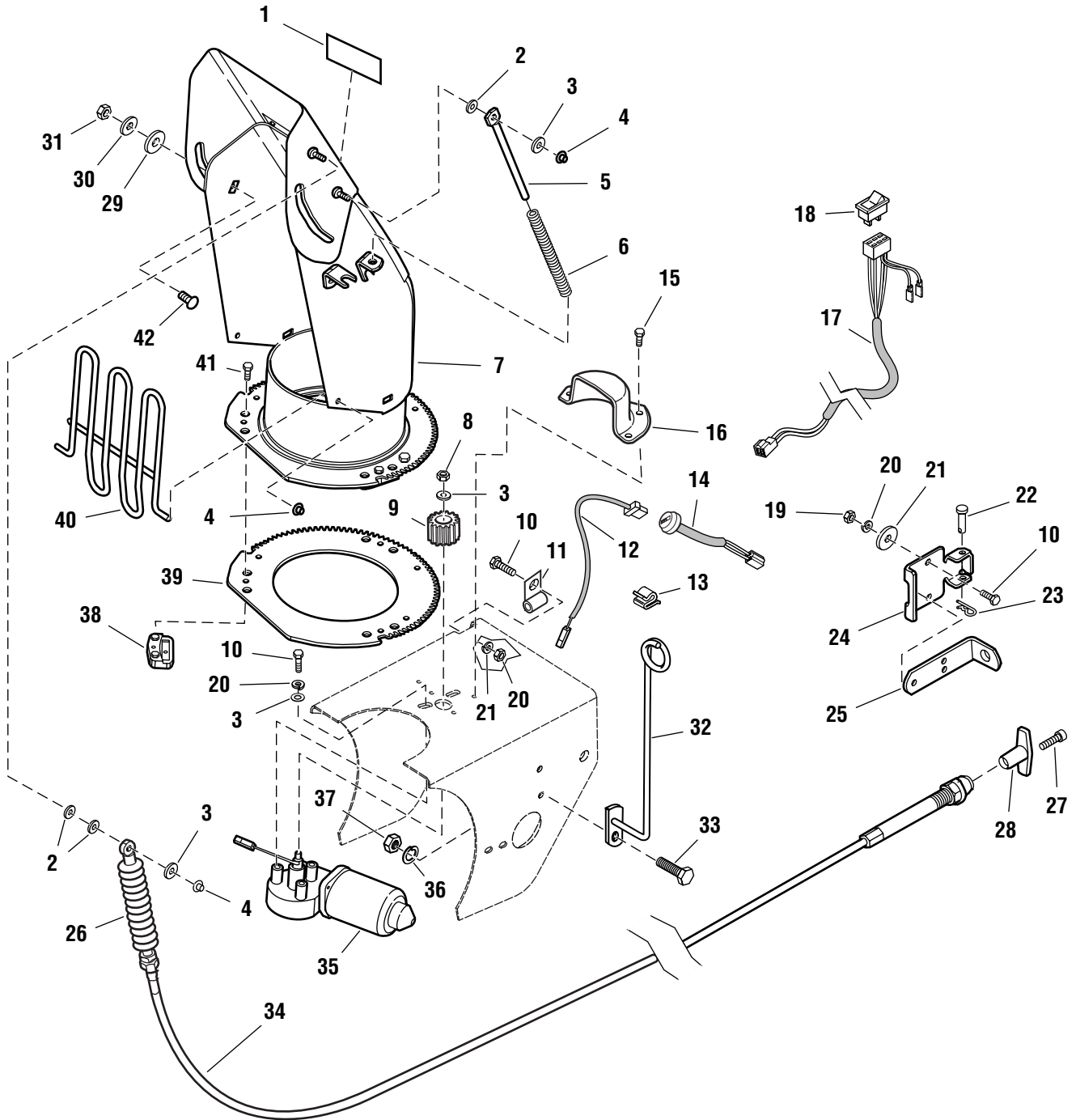
The above parts group applies to the following Mfg. Nos.:

1694295 Single Stage Snowthrower, 42"

Spout Group

986023

NOTE: Unless noted otherwise,
use the standard hardware torque
specification chart.



The above parts group applies to the following Mfg. Nos.:

1694295 Single Stage Snowthrower, 42"

Spout Group

REF NO.	PART NO.	QTY.	DESCRIPTION
1	1722674	1	DECAL, Danger
2	1702219	3	SPACER
3	1921319	5	WASHER
4	1960126	4	NUT, Push, 1/4
5	1611945	1	ROD
6	1611939	1	SPRING, Compression
7	1721601	1	CHUTE & DEFLECTOR ASSEMBLY
8	1923358	1	NUT, Hex Center Lock, 1/4-20
9	1717480	1	PINION
10	1924009	6	CAPSCREW, Hex Head, 1/4-20 x 7/8
11	1708008	1	CLAMP, Wire
12	1723117	1	HARNESS ASSEMBLY
13	934683	2	CLIP, Wire
14	1716987	1	HARNESS ASSEMBLY, Power Outlet
15	1925003	3	CAPSCREW, Hex Head Taptite, 1/4-20 x 1/2
16	1717481	1	COVER, Pinion
17	1722735	1	HARNESS ASSEMBLY, Spout Rotator
18	1716329	1	SWITCH, Electric
19	1916622	3	NUT, Hex, 1/4-20
20	1916964	6	LOCKWASHER
21	1960151	2	WASHER
22	1668344	1	PIN, Flat Head Drilled
23	1960221	1	CLIP, Hair Pin
24	1721590	1	BRACKET, Cable Mount
25	1705920	1	BRACKET "L"
26	1719139	1	BOOT
27	1960600	1	SCREW, Round Head, #8-32
28	1719138	1	HANDLE, "T"
29	960210	1	WASHER, Special
30	1919326	1	WASHER
31	1919438	1	NUT, Hex ESNA Lock, 5/16-18
32	1717591	1	ROD & BAR ASSEMBLY
33	1921333	1	CAPSCREW, Hex Head, 5/16-18 x 1
34	1717482	1	CABLE & KNOB ASSEMBLY (Includes Ref. Nos. 26,27 & 28)
35	1715885	1	MOTOR, Electric
36	1917356	1	LOCKWASHER
37	1917372	1	NUT, Hex, 5/16-18
38	1666613	3	HOLD DOWN, Chute
39	1717477	1	GEAR, Chute
40	1704446	1	GUARD & SUPPORT ASSEMBLY
41	1960001	3	CAPSCREW, Hex Washer Head, #10-14 x 5/8
42	1931333	1	CARRIAGE BOLT, 5/16 x 3/4

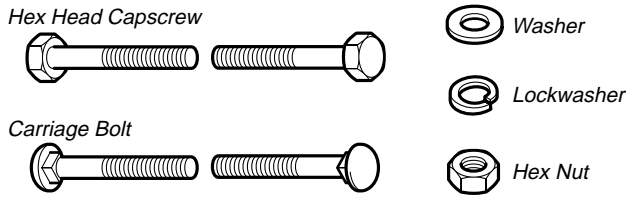
Footnotes:

The above parts group applies to the following Mfg. Nos.:

1694295 Single Stage Snowthrower, 42"

Hardware Identification & Torque Specifications

Common Hardware Types

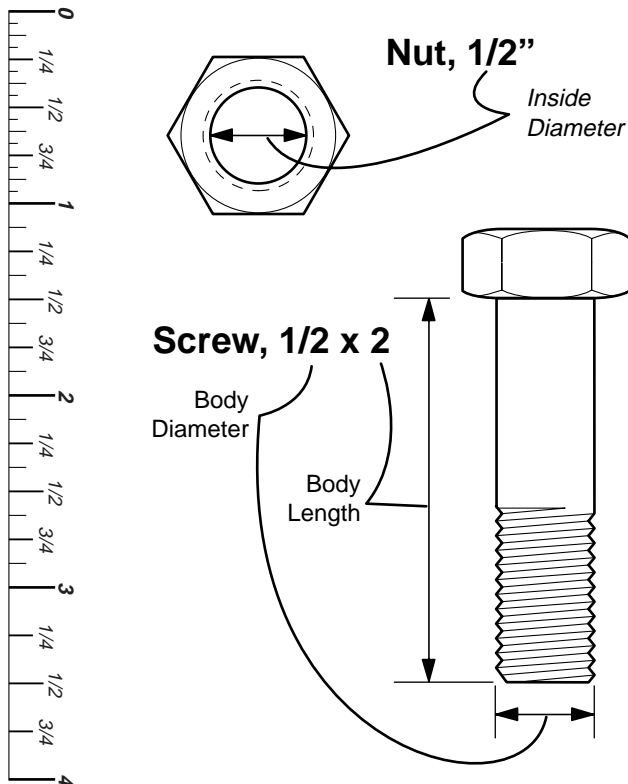


Standard Hardware Sizing

When a washer or nut is identified as **1/2"**, this is the *Nominal size*, meaning the *inside diameter* is 1/2 inch; if a second number is present it represent the *threads per inch*

When bolt or capscrew is identified as **1/2 - 16 x 2"**, this means the *Nominal size*, or *body diameter* is 1/2 inch; the second number represents the *threads per inch* (16 in this example, and the final number is the *body length* of the bolt or screw (in this example 2 inches long).

The guides and ruler furnished below are designed to help you select the appropriate hardware and tools.



Torque Specification Chart

FOR STANDARD MACHINE HARDWARE (Tolerance $\pm 20\%$)

Hardware Grade	No Marks		SAE Grade 2		SAE Grade 5		SAE Grade 8	
	in/lbs ft/lbs	Nm.	in/lbs ft/lbs	Nm.	in/lbs ft/lbs	Nm.	in/lbs ft/lbs	Nm.
8-32	19	2.1	30	3.4	41	4.6		
8-36	20	2.3	31	3.5	43	4.9		
10-24	27	3.1	43	4.9	60	6.8		
10-32	31	3.5	49	5.5	68	7.7		
1/4-20	66	7.6	8	10.9	12	16.3		
1/4-28	76	8.6	10	13.6	14	19.0		
5/16-18	11	15.0	17	23.1	25	34.0		
5/16-24	12	16.3	19	25.8	27	34.0		
3/8-16	20	27.2	30	40.8	45	61.2		
3/8-24	23	31.3	35	47.6	50	68.0		
7/16-14	30	40.8	50	68.0	70	95.2		
7/16-20	35	47.6	55	74.8	80	108.8		
1/2-13	50	68.0	75	102.0	110	149.6		
1/2-20	55	74.8	90	122.4	120	163.2		
9/16-12	65	88.4	110	149.6	150	204.0		
9/16-18	75	102.0	120	163.2	170	231.2		
5/8-11	90	122.4	150	204.0	220	299.2		
5/8-18	100	136	180	244.8	240	326.4		
3/4-10	160	217.6	260	353.6	386	525.0		
3/4-16	180	244.8	300	408.0	420	571.2		
7/8-9	140	190.4	400	544.0	600	816.0		
7/8-14	155	210.8	440	598.4	660	897.6		
1-8	220	299.2	580	788.8	900	1,244.0		
1-12	240	326.4	640	870.4	1,000	1,360.0		

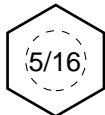
NOTES

- These torque values are to be used for all hardware excluding: locknuts, self-tapping screws, thread forming screws, sheet metal screws and socket head setscrews.
- Recommended seating torque values for locknuts:
 - for prevailing torque locknuts - use 65% of grade 5 torques.
 - for flange whizlock nuts and screws - use 135% of grade 5 torques.
- Unless otherwise noted on assembly drawings, all torque values must meet this specification.

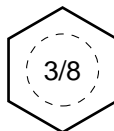
Wrench & Fastener Size Guide



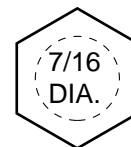
1/4" Bolt or Nut
Wrench—7/16"



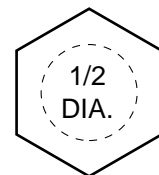
5/16" Bolt or Nut
Wrench—1/2"



3/8" Bolt or Nut
Wrench—9/16"



7/16" Bolt or Nut
Wrench (Bolt)—5/8"
Wrench (Nut)—11/16"



1/2" Bolt or Nut
Wrench—3/4"