

Operator's Manual

THANK YOU FOR BUYING A SNAPPER PRODUCT!

We have designed and built this machine with utmost care, and it is intended to give you long and satisfactory service.

Any mechanical device can be potentially dangerous if not used properly. No accident prevention program can be successful without the wholehearted cooperation of the person who is directly responsible for the operation of the equipment. Study this operator's manual to learn the operation of the controls and observe all safety precautions. Only use this machine for the purpose it is intended. By following these instructions and safety precautions you should enjoy the long and trouble free operation you expect.

Snapper Comet Riding Mower

**MODELS 265X — 265XS — 268X — 268XS
308X — 308XS**

SNAPPER MOWER GUARANTEE

All Snapper Mowers are guaranteed for normal use to the original purchaser against defective workmanship and material. This guarantee extends for one year from purchase date on mowers not used commercially, and for one month on mowers that are used commercially.

We will replace or repair without charge any part or parts returned to us during the guarantee period, with transportation charges prepaid, that our inspection shows to have been defective in workmanship or material when shipped from the factory.

This guarantee is void if the parts in question have been altered or damaged by accident, abuse, neglect, improper adjustment, lack of lubrication or normal wear. This guarantee does not cover engines, tires, tubes, batteries and belts which are guaranteed separately by their manufacturers.

No other guarantee, expressed or implied, is made by the Company which retains the right to change specifications without notice or obligation.

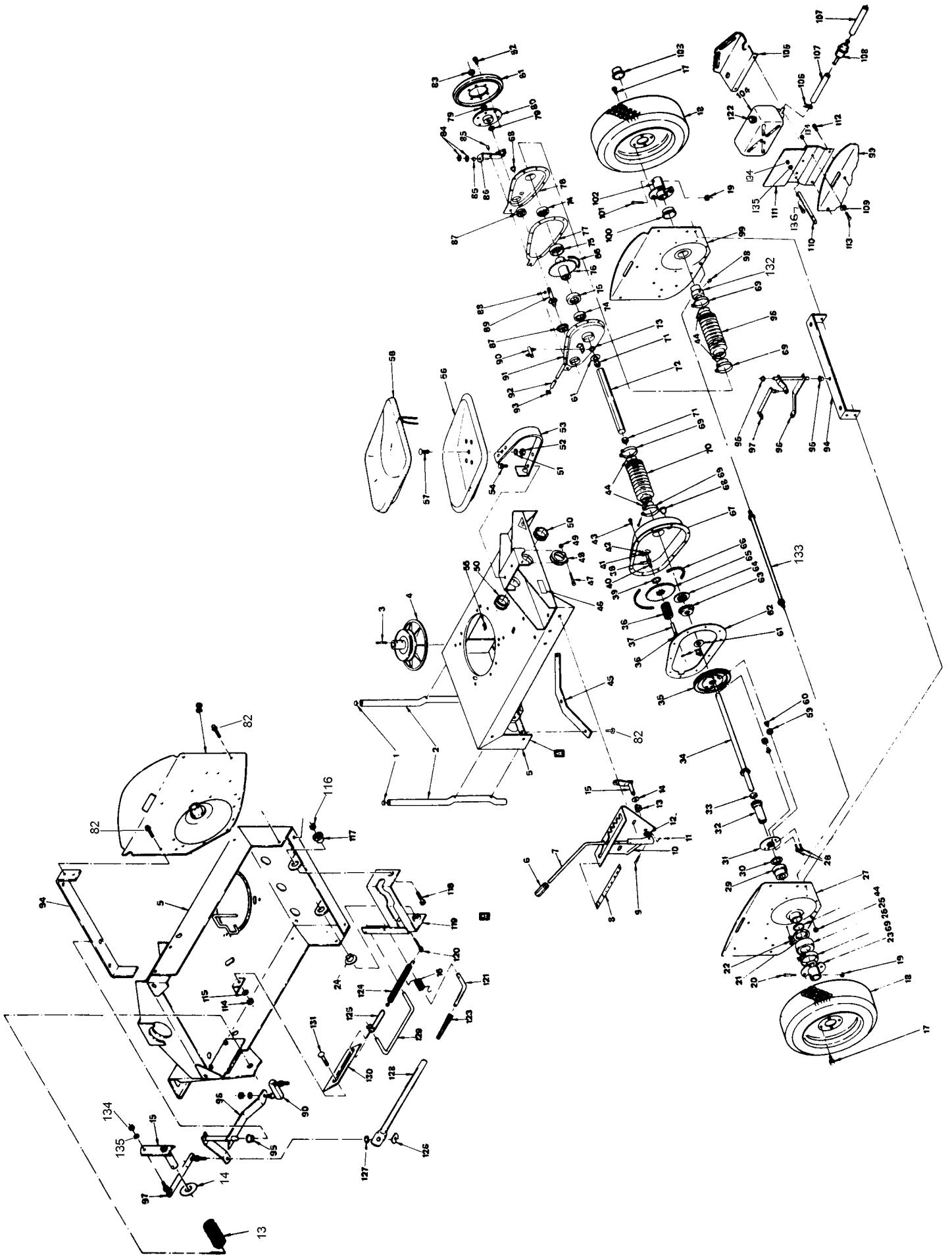
WARNING: Use of replacement parts other than genuine Snapper parts may impair the safety of your mower and may void our warranty.

IMPORTANT: This guarantee is void unless the guarantee card attached is filled out completely and mailed to the Factory within 10 days of the date mower was purchased.

IT IS THE POLICY OF McDONOUGH POWER EQUIPMENT, INC. TO IMPROVE ITS PRODUCTS WHENEVER IT IS POSSIBLE AND PRACTICAL TO DO SO. WE RESERVE THE RIGHT TO MAKE CHANGES OR ADD IMPROVEMENTS AT ANY TIME WITHOUT INCURRING ANY OBLIGATION TO MAKE SUCH CHANGES ON PRODUCTS MANUFACTURED PREVIOUSLY.

McDONOUGH POWER EQUIPMENT, INC.

McDONOUGH, GA., U. S. A., 30253

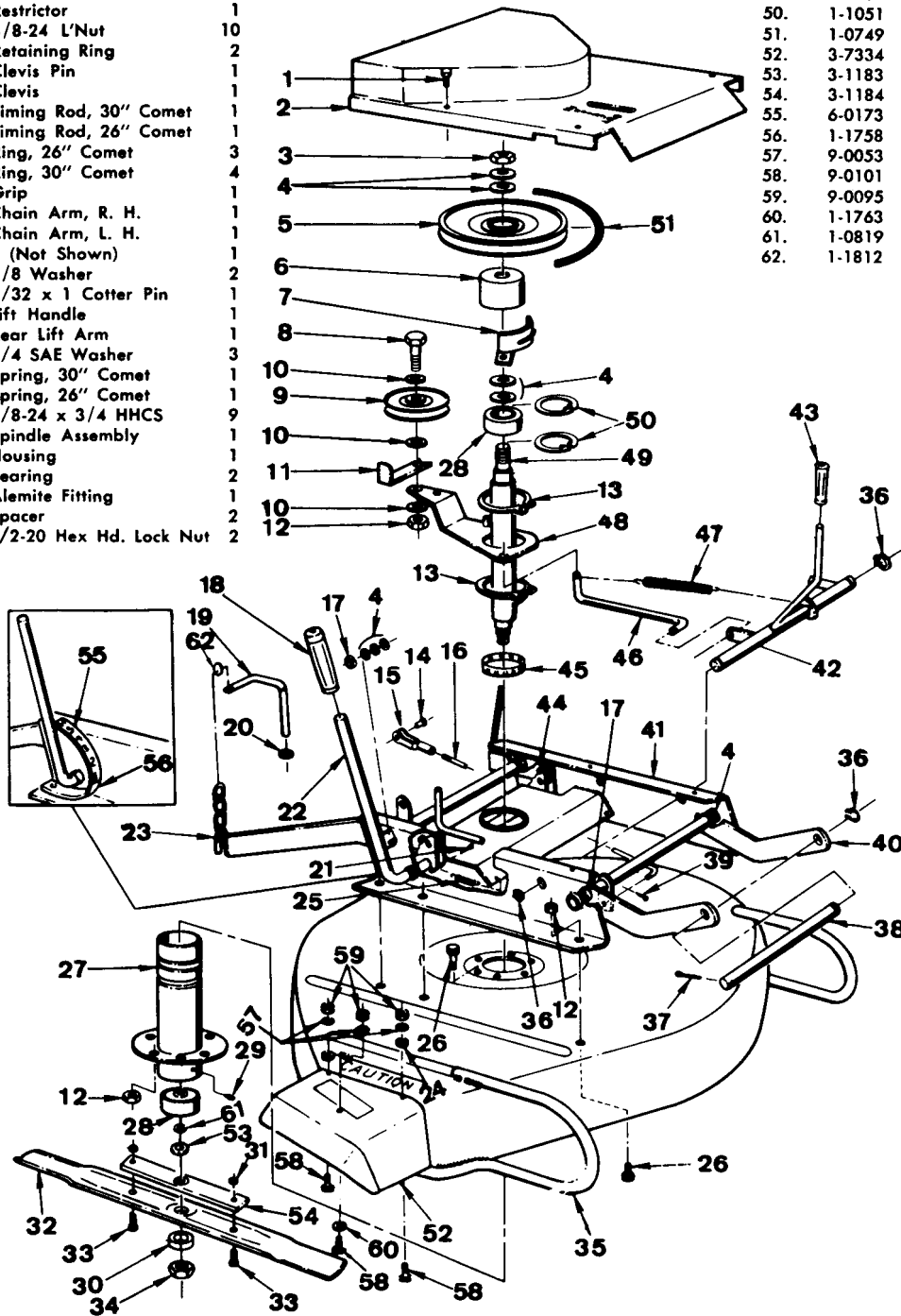


Rear Wheels, Transmission and Variable Speed Drive

No.	Part No.	Description	Qty.	No.	Part No.	Description	Qty.	No.	Part No.	Description	Qty.
1.	1-0153	Cap	2	47.	9-0358	5/16-24 x 2-1/2 Hex Head Cap Screw	1	105.	3-9553	Front Bracket	1
2.	3-0798	Bumper	2	48.	3-1100	Tube Clamp	1	106.	1-1137	Hose Clamp	2
3.	1-0210	Key	1	49.	1-0969	5/16-24 Flange Lock Nut	1	107.	3-1726	Fuel Hose	2
4.	5-0169	Drive Disc	1	50.	1-1033	Grommet	2	108.	1-1777	Filter	1
5.	4-9556	Main Case	1	51.	9-0247	7/16 Lock Washer	1	109.	3-0008	Washer	1
6.	1-0838	Grip	1	52.	9-0449	7/16-14 Hex Nut	1	110.	3-1138	Tank Brace, 265X, 265XS, 268X, 308X	1
7.	4-0284	Shift Handle	1	53.	3-0844	Seat Spring	1	111.	3-1180	Tank Brace, 268XS, 308XS	1
8.	1-0767	Decal	1	54.	9-0324	3/8-16 x 1 Hex Head ST. Screw	2	112.	9-0361	Hex Cap Screw ST.	1
9.	1-1021	Clevis Pin	1	55.	3-1087	Washer (Tech Engine)	1	113.	9-0227	5/16-24 x 5/8 Hex Head Cap Screw	1
10.	4-0332	Shift Detent	1	56.	2-1011	Seat Pan	1	114.	9-0130	3/8-16 Hex Nut	1
11.	9-0037	3/32 x 3/4 Cotter Pin	1	57.	9-0248	7/16-14 x 1 Carriage Bolt	1	115.	9-0118	3/8 Lock Washer	1
12.	3-1036	Thrust Washer	1	58.	1-1012	Seat Cushion	1	116.	9-0196	5/16-18 Hex Nut	4
13.	1-0754	Spring	1	59.	2-1127	12T, 12P Gear	4	117.	1-1048	Yoke Bearing	1
14.	3-1036	Thrust Washer	1	60.	2-1126	Pinion Spacer	4	118.	9-0369	5/16-18 x 1 Self Tapping Screw	1
15.	4-0341	Shift Handle Arm	1	61.	1-1072	Flange Washer	2	119.	4-7320	Yoke Lift	1
16.	1-1821	Spring	1	62.	1-8060	Gasket	1	120.	9-0357	3/16 x 3/4 Cotter Pin	1
17.	1-1059	Lug Bolt	8	63.	1-0959	Sprocket	1	121.	3-1729	Rod	1
18.	5-0116	Wheel and Tire Ass'y., 265X, 265XS, 268X, 268XS	2	64.	1-0988	Washer	1	122.	1-1775	Gas Cap	1
				65.	2-1129	Sprocket	1	123.	1-1820	Spring, 8 H.P. Only	1
				66.	1-0941	Chain	1	124.	1-1041	Spring	1
				67.	3-7279	Case	1	125.	1-1090	Clutch Clevis	1
				68.	1-1024	Plastic Plug	3	126.	1-1814	5/16-24 "T" Nut, 8 H.P. Only	1
				69.	1-1037	Boot Clamp	5	127.	9-0395	5/16 Internal Tooth Lock Washer	1
18.	5-0294	Wheel and Tire Ass'y., 308X, 308XS	2	70.	1-1011	Boot	2	128.	2-1706	Tube, 8 H.P. Only	1
				71.	1-0960	Bearing	1	129.	3-1050	Clutch Rod	1
				72.	2-1121	Drive Tube	1	130.	3-1080	Rod Guide	1
				73.	1-1071	Nylon Washer	1	131.	9-0136	3/8-16 x 3/4 Carriage Bolt	1
				74.	1-0942	Needle Bearing	2	132.	5-0918	Bearing, Fender	1
				75.	1-1086	Nylon Thrust Washer	2	133.	1-1070	Tie Rod	1
				76.	4-0355	Hub and Sprocket Str.	1	134.	9-0223	5/16" SLW	4
				77.	1-8059	Gasket	1	135.	9-0287	5/16" SLW	4
				78.	3-7278	Cover, Left Hand	1	9-0238	5/16" x 24x1" HHCS	1	
				79.	1-1121	Bellville Washer	1	ITEMS NOT SHOWN ON 265XS			
				80.	2-0911	Hub	1	1-1148	Mag. To Ground	1	
				81.	1-0765	Driven Disc	1	1-1150	Ground Strap	1	
				82.	9-0361	5/16-18 x 5/8 HWST	14	1-1151	Battery Cable	1	
				83.	9-0356	5/8-18 Hex Lock Nut	2	1-1152	Starter Cable	1	
				84.	2-0984	Washer	2	1-1728	Field Wire	1	
				85.	1-0916	Split Spacer	2	ITEMS NOT SHOWN ON 268XS, 308XS			
				86.	5-0253	Brake Lever	1	1-1149	Mag. To Ground	1	
				87.	1-0756	Bearing	2	1-1150	Ground Strap	1	
				88.	1-0614	Woodruff Key	1	1-1151	Battery Cable	1	
				89.	1-0940	Sprocket and Shaft	1	1-1152	Starter Cable	1	
				90.	1-1018	Shift Link, Short	1	1-1730	Terminal	1	
				91.	4-7313	Cover, Right Hand	1	ITEMS NOT SHOWN ON ALL XS SERIES			
				92.	2-0908	Roller	1	1-0815	Battery	1	
				93.	1-0776	Retaining Ring	1	1-1155	Switch	1	
				94.	3-7291	Cross Brace	1	1-1138	Switch Key	2	
				95.	1-1016	Nylon Bearing	2	4-0360	Battery Case Str.	1	
				96.	4-0340	Shift Arm	1	9-0093	1/4-20 x 6" Carr. Bolt	1	
				97.	1-1017	Shift Link, Long	1	9-0311	1/4-20 Wing Nut	1	
				98.	1-0909	Grease Fitting	1	9-0052	1/4 Split L'Washer	1	
				99.	3-7285	Fender, Left Hand	1	9-0074	1/4-20 x 3/4 Carr. Bolt	1	
				100.	1-0967	Seal Cap, Left Hand	1	9-0316	5/16-18 x 3/4 Carr. Bolt	1	
				101.	1-1035	Axle Bolt, Left Hand	1	9-0063	5/16-18 Hex Nut	1	
				102.	4-0350	Hub, Left Hand	1	9-0196	5/16-18 Hex Nut	1	
				103.	1-1052	Hub Cap	2	9-0014	10/32 Lock Nut	2	
				104.	1-9507	5-Quart Tank	1				

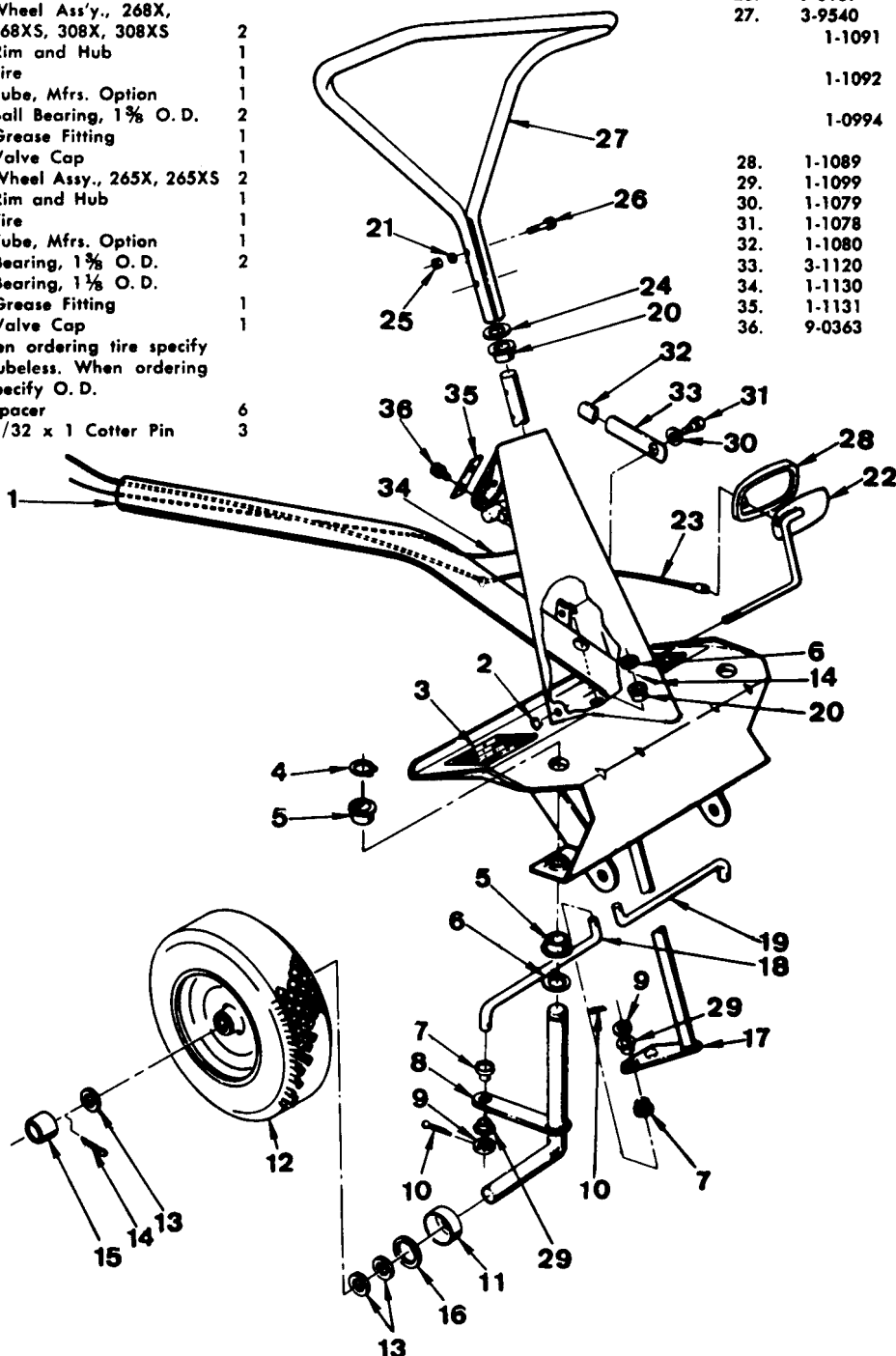
Spindle, Cutter Unit and Lift, 26", 30" Snapper Comet

No.	Part No.	Description	Qty.	No.	Part No.	Description	Qty.	No.	Part No.	Description	Qty.
1.	9-0302	1/4-20 x 3/8 Self Tapping	4	32.	1-8069	Cutter Bar, 30" Comet	1	40.	4-7318	Front Lift Arm	1
2.	1-8040	Spindle Cover, 26" Comet	1	32.	1-8068	Cutter Bar, 26" Comet	1	41.	4-7324	Rail Str., 30" Comet	1
2.	3-7296	Spindle Cover, 30" Comet	1	33.	9-0392	1/2-20 x 1 HHCS HT.	2	41.	4-7317	Rail Str., 26" Comet	1
3.	1-0027	Jam Nut	1	34.	9-0278	5/8 Jam Nut	1	42.	4-7254	Idler Handle	1
4.	1-0935	Washer	14	35.	4-7323	Deck, 30" Comet	1	43.	1-0681	Grip	1
5.	1-0787	Spindle Pulley	1	35.	4-7325	Deck, 26" Comet	1	44.	1-0737	Roll Pin	2
6.	3-0817	Brake Drum	1	36.	1-0739	Retaining Ring	3	45.	1-0741	Tolerance Ring	1
7.	5-0280	Brake Shoe Ass'y.	1	37.	9-0041	Cotter Pin	1	46.	2-0880	Idler Link	1
8.	9-0161	3/8-24 x 1-3/4 HHCS	1	38.	2-0882	Support Rod	1	47.	1-0750	Spring	1
9.	1-1029	Idler Pulley 3/8 Bore	1	39.	9-0365	Cotter Pin	2	48.	3-0813	Idler Arm	1
10.	9-0122	3/8 Washer	9					49.	2-7184	Spindle	1
11.	3-0982	Restrictor	1					50.	1-1051	Retaining Ring	2
12.	9-0289	3/8-24 L'Nut	10					51.	1-0749	Belt	1
13.	1-0740	Retaining Ring	2					52.	3-7334	Deflector	1
14.	1-0736	Clevis Pin	1					53.	3-1183	Washer	1
15.	1-0735	Clevis	1					54.	3-1184	Blade Holder	1
16.	2-1157	Timing Rod, 30" Comet	1					55.	6-0173	Height Plate and Decal Kit	1
16.	2-1135	Timing Rod, 26" Comet	1					56.	1-1758	Decal	1
17.	1-0996	Ring, 26" Comet	3					57.	9-0053	1/4 Int. Tooth L'Washer	3
17.	1-0996	Ring, 30" Comet	4					58.	9-0101	1/4-28 x 3/4 HHCS	3
18.	1-0684	Grip	1					59.	9-0095	1/4-28 Hex Nut	3
19.	4-0385	Chain Arm, R. H.	1					60.	1-1763	Fender Washer	1
19.	4-0386	Chain Arm, L. H. (Not Shown)	1					61.	1-0819	Washer	1
20.	9-0183	5/8 Washer	2					62.	1-1812	"O" Ring	2
21.	9-0364	5/32 x 1 Cotter Pin	1								
22.	4-7295	Lift Handle	1								
23.	4-7319	Rear Lift Arm	1								
24.	9-0055	1/4 SAE Washer	3								
25.	1-1074	Spring, 30" Comet	1								
25.	1-1010	Spring, 26" Comet	1								
26.	9-0292	3/8-24 x 3/4 HHCS	9								
	5-0195	Spindle Assembly	1								
27.	4-0273	Housing	1								
28.	1-0696	Bearing	2								
29.	1-0817	Alumite Fitting	1								
30.	3-1182	Spacer	2								
31.	9-0393	1/2-20 Hex Hd. Lock Nut	2								



Front Wheels, Front End and Steering

No.	Part No.	Description	Qty.	No.	Part No.	Description	Qty.
1.	4-9555	Front Axle	1	15.	1-1022	Hub Cap	2
2.	1-0776	Retaining Ring	2	16.	3-1179	Felt Washer	2
3.	1-1020	Foot Pad	2	17.	4-0344	Steering Shaft	1
4.	1-0746	Retaining Ring	2	18.	3-1058	Tie Rod, RH	1
5.	1-0986	Bearing	4	19.	3-1057	Tie Rod, LH	1
6.	1-0935	Washer	1	21.	9-0053	1/4 Internal Tooth L'Washer	2
7.	1-1100	Bearing Half	4	22.	4-7327	Pedal	1
8.	4-0361	King Pin, RH	1	23.	1-1046	Cable, 30" Snapper Comet	1
8.	4-0362	King Pin, LH (Not Shown)	1	23.	1-1047	Cable, 26" Snapper Comet	1
9.	9-0123	3/8 SAE Washer	4	24.	1-0690	Shim Washer	2
10.	9-0357	3/16 x 3/4 Cotter Pin	4	25.	9-0095	1/4-28 Hex Nut	2
11.	3-1038	Dust Cap	2	26.	9-0109	Handle Screw	2
12.	5-0618	Wheel Ass'y., 268X, 268XS, 308X, 308XS	2	27.	3-9540	Steering Wheel	1
	1-0819	Rim and Hub	1		1-1091	Decal, 26" Comet (Not Shown)	1
	1-0820	Tire	1		1-1092	Decal, 30" Comet (Not Shown)	1
	1-0821	Tube, Mfrs. Option	1		1-0994	Decal, "Snapper" (Not Shown)	1
	1-1807	Ball Bearing, 1 1/2 O. D.	2	28.	1-1089	Pedal Pad	1
	1-0909	Grease Fitting	1	29.	1-1099	Bearing Half	4
	1-0189	Valve Cap	1	30.	1-1079	Spring Washer	1
12.	5-0179	Wheel Ass'y., 265X, 265XS	2	31.	1-1078	Shoulder Bolt	1
	1-0819	Rim and Hub	1	32.	1-1080	Grip	1
	1-0820	Tire	1	33.	3-1120	Brake Lever	1
	1-0821	Tube, Mfrs. Option	1	34.	1-1130	Throttle Control	1
	1-0570	Bearing, 1 1/2 O. D.	2	35.	1-1131	Plate	1
	1-1727	Bearing, 1 1/2 O. D.	1	36.	9-0363	10/24 x 5/8 WFC5 ST	2
	1-0909	Grease Fitting	1				
	1-0189	Valve Cap	1				
	Note: When ordering tire specify tube or tubeless. When ordering bearing specify O. D.						
13.	1-0935	Spacer	6				
14.	9-0364	5/32 x 1 Cotter Pin	3				



Assembly, Operation, Service Manual and Parts List

SNAPPER COMET 26" & 30"

1. ASSEMBLY:

- A. Remove top and sides from crate.
- B. Install steering wheel using two (2) 1/4 x 1 1/2 bolts.
- C. Cut shipping straps and remove mower from crate bottom.
- D. On some models it is necessary to reconnect steering link which has been disassembled due to crating size limitations.
- E. FILL ENGINE WITH FUEL AND OIL.

2. GENERAL OPERATION:

A. START ENGINE:

1. Make certain shift handle is in neutral and cutter unit out before attempting to start.
2. Refer to engine manual for throttle control instructions for the type used.
3. If engine is also equipped with electric starter, refer to engine manual for starting procedure. The starter switch is located to the rear of the battery.

B. FORWARD MOTION:

1. Disengage clutch and apply brake by depressing pedal to the end of its travel. NOTE: Excessive pedal pressure detrimental to easy shifting.
2. Move shift lever, located on right hand side of seat, to the low speed position (No. 1) and slowly release clutch and brake pedal.
3. Speeds may now be increased or decreased without the use of the clutch pedal.
4. Never start by moving shift handle without use of the clutch pedal as the driven disc life will be shortened.
5. Always begin forward motion in No. 1 speed position.

C. REVERSE MOTION:

Follow same procedure as "B" above, however, there is only one speed in reverse and shift handle must be held in reverse position at the end of the slot.

D. STOPS:

1. The mower may be stopped in either forward or reverse motion by depressing clutch and brake pedal.
2. Always return shift handle to neutral after a stop is made.
3. As a safety precaution, if stops have to be made going up steep inclines, back down to level ground to re-start.

E. CUTTER UNIT:

1. Cutting height is adjusted by simply changing the position of the lift handle. There are different positions ranging between 1 and 4 inches.
2. Cutter engagement is accomplished by slowly pulling the cutter handle to the rear until the spring loaded idler takes over. The spindle brake is automatically released or applied as this handle is shifted from the "in" or "out" position. Cutter engagement or release may be accomplished at any cutting height with the mower moving or at rest.

3. ADJUSTMENTS:

A. CLUTCH:

The clutch linkage has been designed so that with initial factory adjustment, the driven disc wear is accommodated throughout its useful life. Replace disc when worn to 1/32 — 1/16 inch rubber thickness. Do not tamper with linkage if mower does not pull at this point. Replace driven disc.

In the event someone tampers with the factory adjustment, the linkage can be checked as follows:

1. Remove driven disc and install adjusting gauge, which can be made from a driven disc with the "as new" radius of 3 inches on half the circumference and a 2 3/4 inch radius ground on the other half.
2. Depress clutch pedal and shift to second speed.
3. Adjust clutch rod guide until the 2 3/4 inch radius clears driving disc .005/.010 inch.
4. Rotate gauge 180 deg. and fully depress clutch pedal until brakes are applied. Check to see that the 3 inch radius clears driven disc by 1/32 inch minimum with sliding chain case pushed lightly against yoke lift. This assures that driven disc will be pulled down from driving disc when clutch is disengaged.

B. CLUTCH AND BRAKE PEDAL:

Control cable should have slight amount of slack with clutch and brake pedal released and with shift handle in neutral. This can be checked by seeing that the clutch rod slides to the rear end of slot in the clutch rod guide. Adjust by shifting cable stops as required through keyhole in brake pedal.

C. PARKING BRAKE:

To apply — press brake and clutch pedal down firmly, push parking brake handle down clamping brake cable. To release raise handle.

D. CUTTER DRIVE BELT:

The spring loaded idler maintains proper belt tension throughout the effective belt life.

Adjust main tube when idler pulley causes the belt to rub together behind the spindle pulley. Main tube adjustment is accomplished as follows:

1. Loosen clamp under seat spring and pull main tube forward until inside surface of cutter drive belt has approximately 1" running clearance measured at the idler pulley with cutter unit engaged.
2. Check to see if control cable has a slight amount of slack with clutch and brake pedal released and with shift handle in neutral discussed in "D" above. Belt replacement is accomplished as follows:
 1. Remove spindle guard cover and remove belt from pulley.
 2. Stand mower on end (refer to "Storage") with shift handle in neutral.
 3. Pull belt from behind drive disc. Reach behind slide and pull clutch rod for maximum disc clearance. Roll belt between drive and driven discs. Pull belt between driven disc and belt guide and remove from transmission case.
 4. Reverse procedure to install new belt.

E. CUTTER SPINDLE REMOVAL:

If it is necessary to remove and re-assemble spindle housing, the housing must be plumbed to the cutter deck to obtain an equal distance between the blade tip and deck. This is accomplished by locating the housing flange correctly to the deck, using the clearance holes for the capscrews for alignment. Tighten securely using self-locking nuts.

F. DECK ADJUSTMENT:

The cutter blade has been factory adjusted for 1 inch minimum cutting height. After a period of time, wear in the linkage may require re-adjustment. Correct procedure is as follows — taking all measurements to the same blade tip:

1. Park mower on level and even floor or surface.
2. Move lift handle to lowest position to remove spindle cover.
3. Adjust blade tip cutting edge to $1\frac{5}{8}$ inch at rear by bending the swinging chain arms of the rear suspension up or down as required, maintaining a level blade side to side as this is adjusted.
4. Swing blade tip to front and adjust to 1 inch by adjusting timing link that connects the front and rear lift arms. Shortening this link $\frac{1}{2}$ turn of the rod end raises front end approximately $\frac{1}{8}$ inch.
5. Turn blade to point to the front and rear of machine. The 26" and 30" blade should be at least $\frac{1}{2}$ " higher at rear than the front.

G. TIRES:

1. Inflate front tires to 20 lbs.
2. Inflate rear tires to 25 lbs.

4. BATTERY INSTALLATION (FOR ELECTRIC STARTER ONLY):

- A. Service battery according to instructions supplied with the battery.
- B. Remove battery clamping bracket and install battery under left hand side of seat.
- C. Attach battery lead to battery. Check engine manual for positive or negative ground.
- D. Refer to engine manual for operating instructions of the battery charging system used.

5. STORAGE:

The mower may be set on end for servicing or storage within the following limitations.

- A. For electric starter units, remove battery to prevent acid leakage and subsequent damage.
- B. Gas tank must be practically empty to eliminate fire hazard.
- C. For winter storage, always drain oil and gasoline. Refer to engine manual for proper procedure to follow. Oil or grease any parts of the mower subject to rust or corrosion.

6. OPTIONAL EQUIPMENT:

To increase the usefulness of your Snapper Comet Mower, the following kits may be obtained as Optional Equipment:

6-0049	Tire Chains, 16 x 4.80 — 8 Tires
6-0119	Tire Chains, 16 x 6.50 — 8 Tires
6-0111	Leaf Mulcher, 26"
6-0118	Leaf Mulcher, 30"
6-0185	Snow Plow Kit
6-0110	Deluxe Seat
6-0183	Grass Catcher Kit
6-0169	Steering Wheel Kit
6-0170	Wheel Brake Kit

SAFETY PRECAUTIONS

Remember, a careful operator always is the best insurance against an accident.

Study your operator's manual—become familiar with the controls and how the mower operates. Learn to stop the mower quickly.

Never attempt to start engine unless shift handle is in neutral and idler handle in the out position.

For forward motion, always begin movement with shift handle in No. 1 speed position.

Before starting clear area of debris.

Operate the engine at the slowest speed that will cut satisfactorily.

Stop and check for breakage and repair any damage after striking foreign objects.

Mount mower from left hand side, opposite the discharge chute.

Keep hands and feet clear of the cutter unit at all times.

Do not operate mower with guards removed. Disengage cutter and stop engine before dismounting.

Do not crank or operate engine where exhaust fumes can collect.

Never allow children to operate the Snapper Comet.

Instruct individuals to stay away from the mower while it is in operation.

Do not let others ride with you on the mower.

Give complete and undivided attention to the job at hand.

When mowing, never discharge clippings toward windows and doorways.

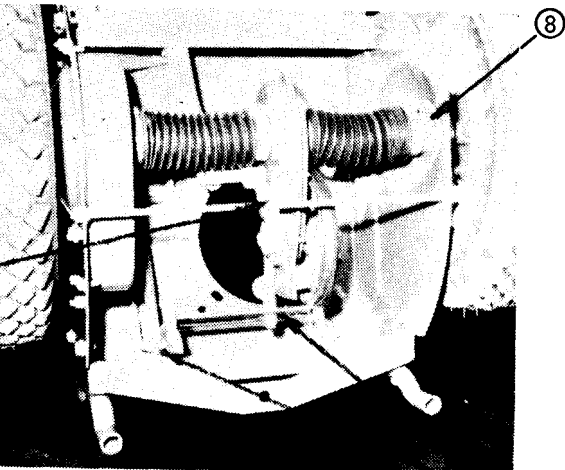
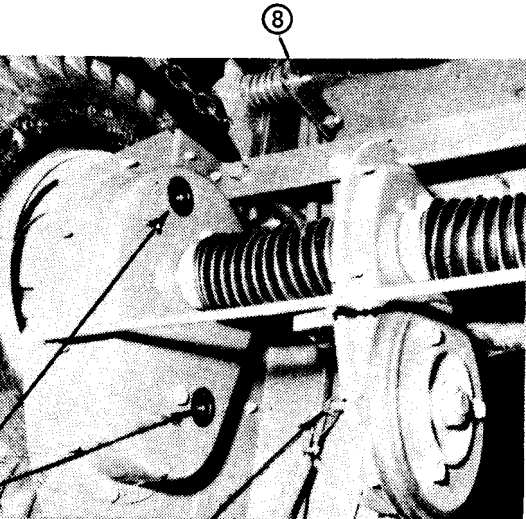
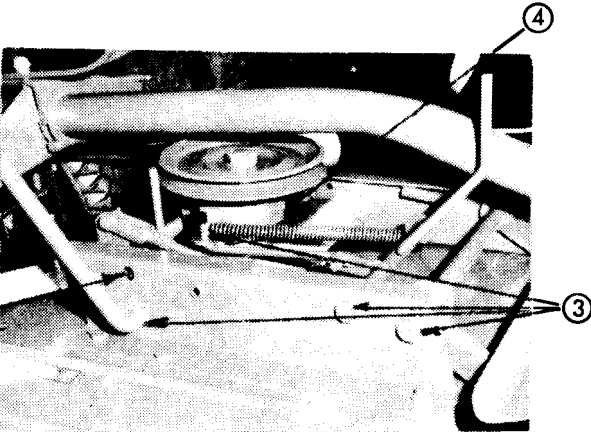
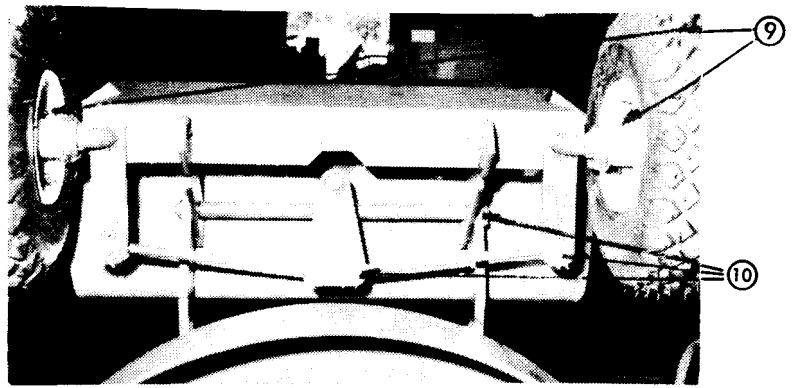
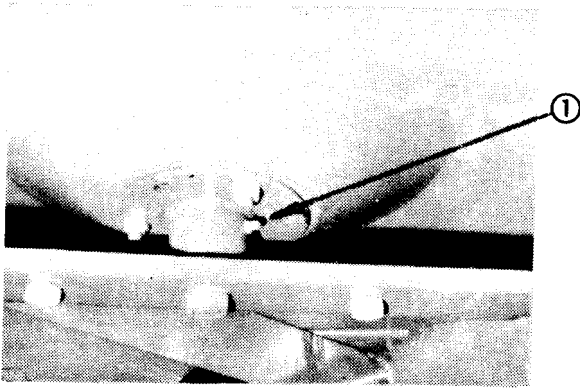
Mow only in daylight or in good artificial light.

Be extra careful when working on hillsides or rough ground. Watch out for holes or ditches into which a wheel may drop and cause the mower to overturn.

If it is necessary to stop when going up steep inclines, back down to level ground to re-start.

When going down inclines, keep in low speed with clutch and brake pedal out to allow engine to control speed.

Fill gas tank outdoors, but never while engine is running or while engine is hot. Avoid spilling. Always use an approved gasoline can.



LUBRICATION INSTRUCTIONS FOR SNAPPER COMET 26" & 30"

1. Spindle is assembled with sealed precision ball bearings and requires infrequent lubrication. Lubricate once each season, one shot using pressure gun. Use Snapper 00 grease. Avoid over-filling under pressure. This will damage bearing seals.
 2. Height adjusting cams: remove spindle guard cover and lubricate cams with medium cup grease every 10 hours of operation or more often if dirty service conditions require.
 3. While cover is off, lubricate other movable joints, linkages, etc., with SAE 20 oil.
 4. Lubricate idler arm using Snapper 00 grease every 10 hours of operation.
 5. Differential and reduction gearing, right hand wheel bearing, and hex drive shaft are lubricated by removing plastic plugs on side of case. Fill with 14 ozs. of Snapper 00 grease through top hole, or until grease reaches bottom of hole B.
- NOTE: Do not overfill. Check every 10 hours of operation. Check grease capacity with machine in standing position.
6. The components in the sliding chain case are factory lubricated with 1½ to 2 ounces of grease. Check every 10 hours of operation. Remove plastic inspection plug and with the aid of a flashlight, check for signs of grease on the chain and sprocket. If no grease is visible, add 1½ ounces of Snapper 00 grease. Do not overfill.
 7. Lubricate all other movable joints, linkages, etc., every 10 hours of operation or more often if dirty service conditions require, using SAE No. 20 oil.
 8. Lubricate right hand wheel bearing and shift lever every 10 hours of operation using Snapper 00 grease in a pressure gun. One shot is sufficient.
 9. Lubricate front wheel bearings with Snapper 00 grease in pressure gun every 10 hours of operation.
 10. Lubricate all other movable joints, linkages, etc., every 10 hours of operation or more often if dirty service conditions require, using SAE 20 oil.
 11. ENGINE: Service and lubricate engine per instructions in engine manual.

NOTE: Snapper 00 grease is available from your Snapper dealer.
Our Part No. 1-1050.
(This is a special compounded grease for this application)