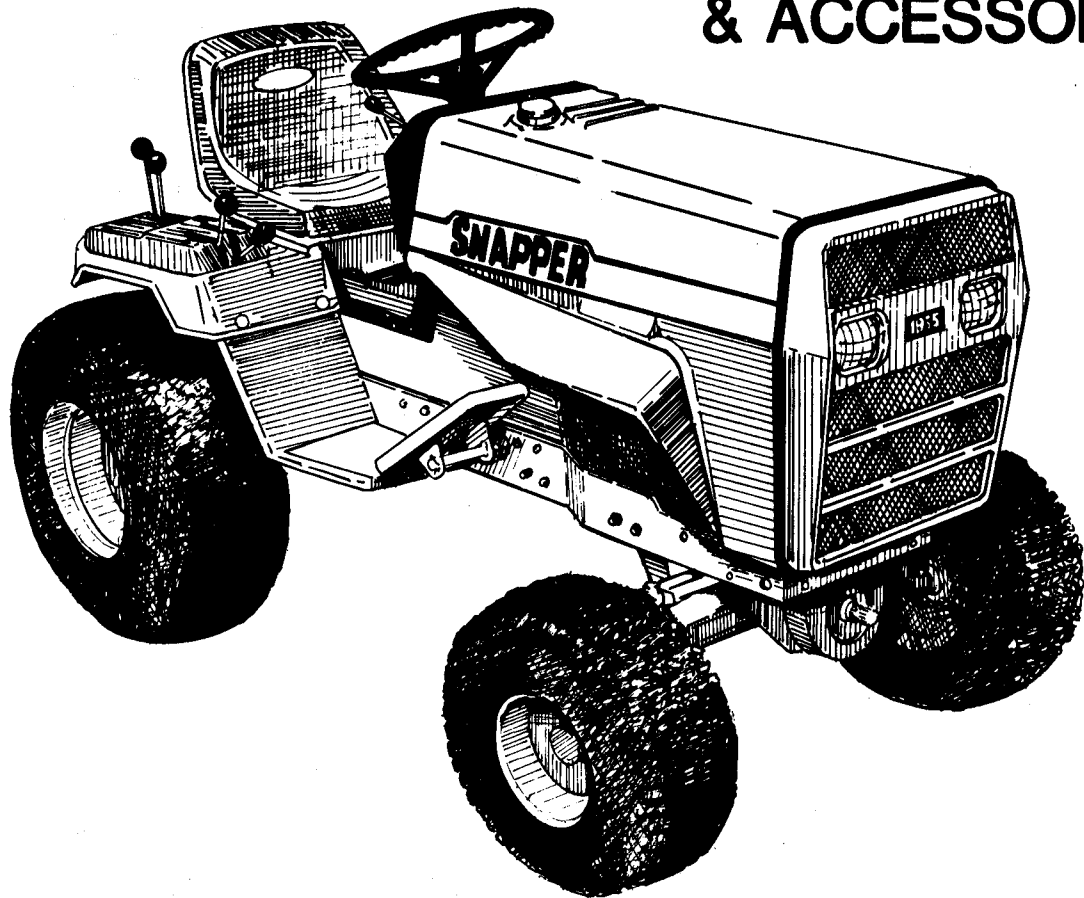


Parts Manual
for

SNAPPER[®]

1855A SERIES TRACTORS

& ACCESSORIES

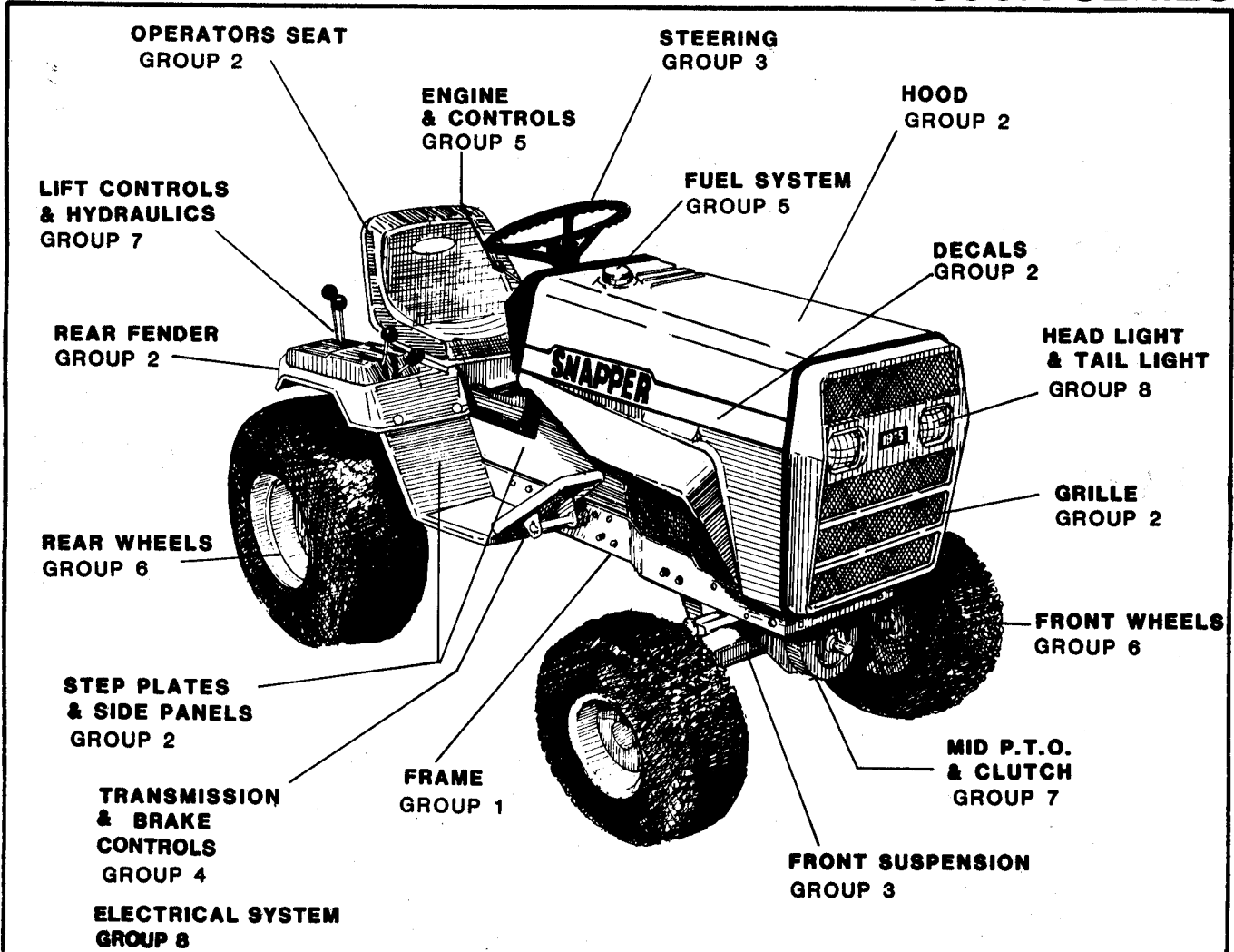


IT IS THE POLICY OF SNAPPER POWER EQUIPMENT TO IMPROVE ITS PRODUCTS WHENEVER IT IS POSSIBLE AND PRACTICAL TO DO SO. WE RESERVE THE RIGHT TO MAKE CHANGES OR ADD IMPROVEMENTS AT ANY TIME WITHOUT INCURRING ANY OBLIGATION TO MAKE SUCH CHANGES ON PRODUCTS MANUFACTURED PREVIOUSLY.

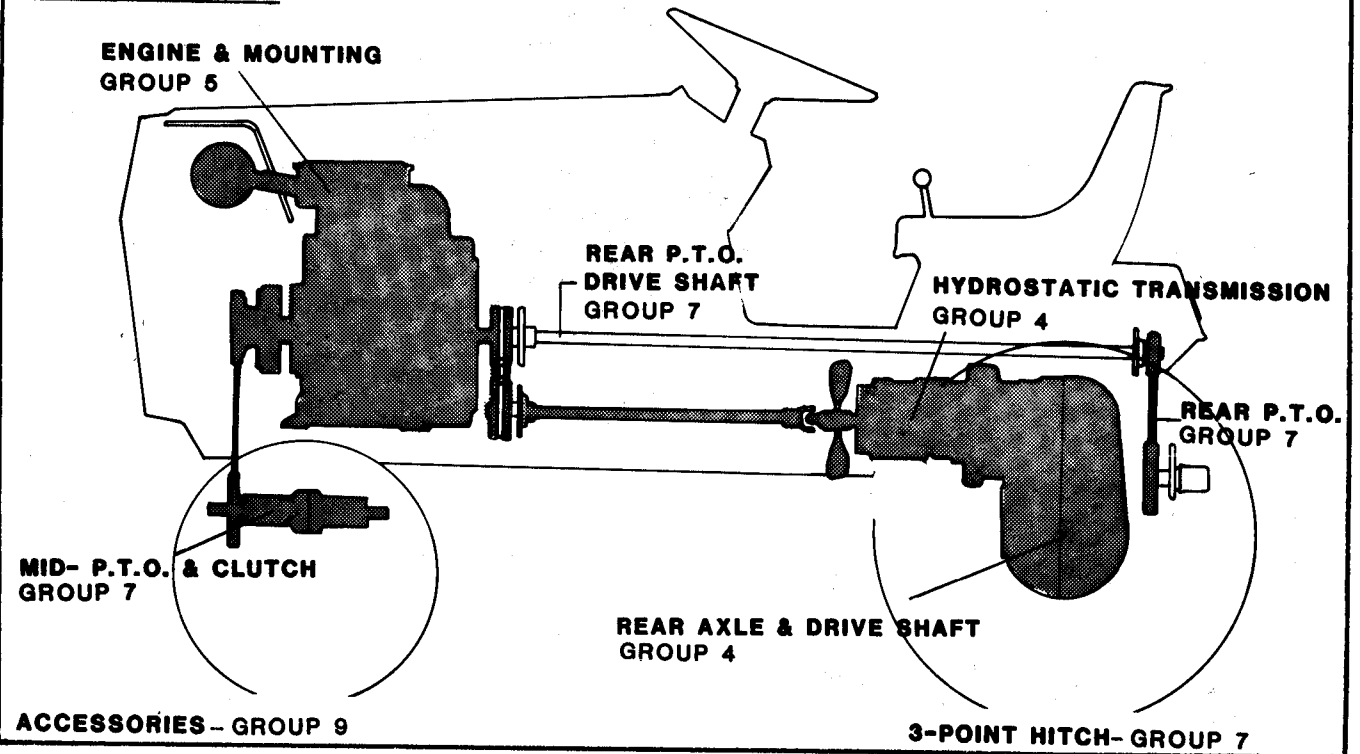
SNAPPER McDonough, GA., 30253 U.S.A.

PRINTED IN U.S.A.

(1/80 ISSUE) MANUAL #06035

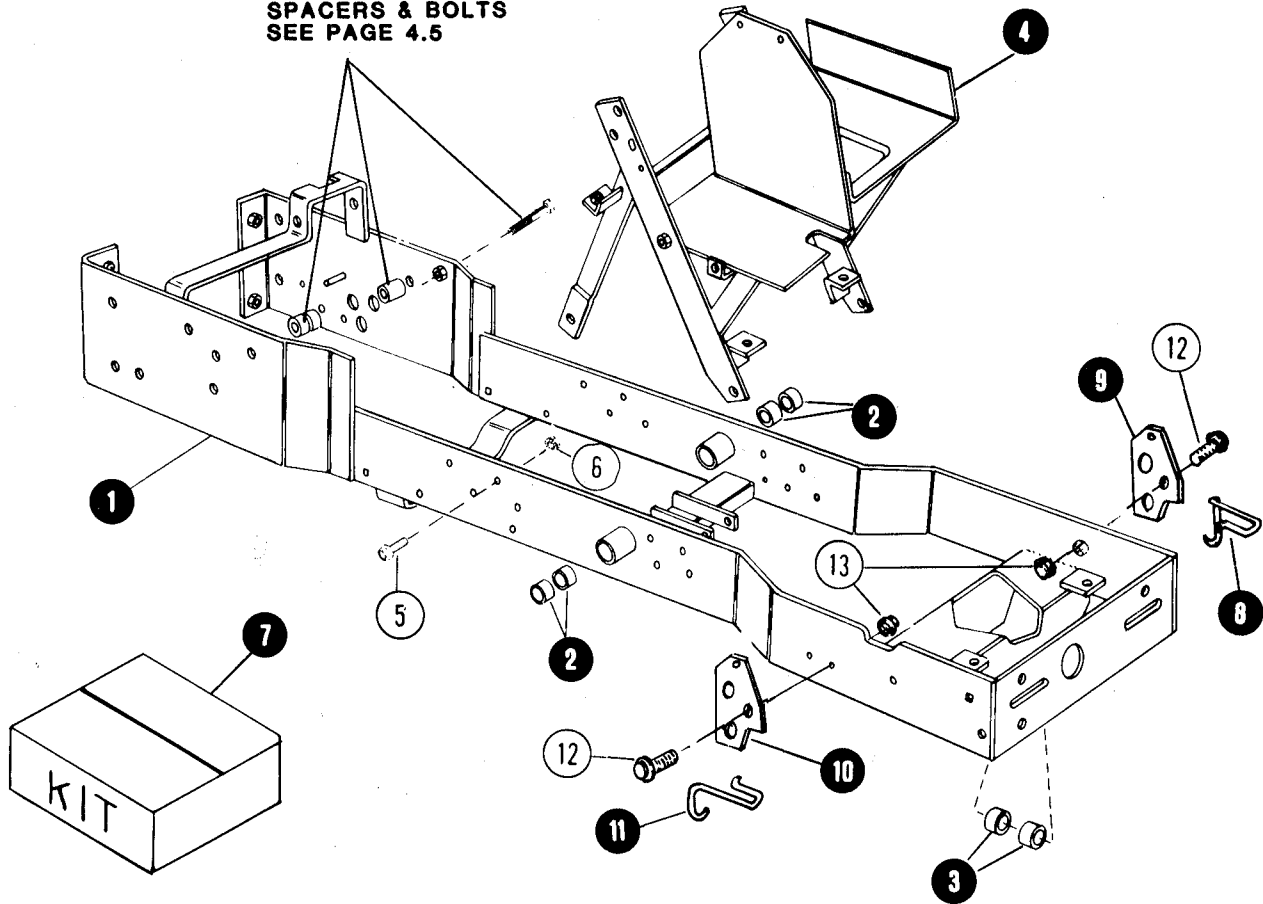


DRIVE SYSTEM



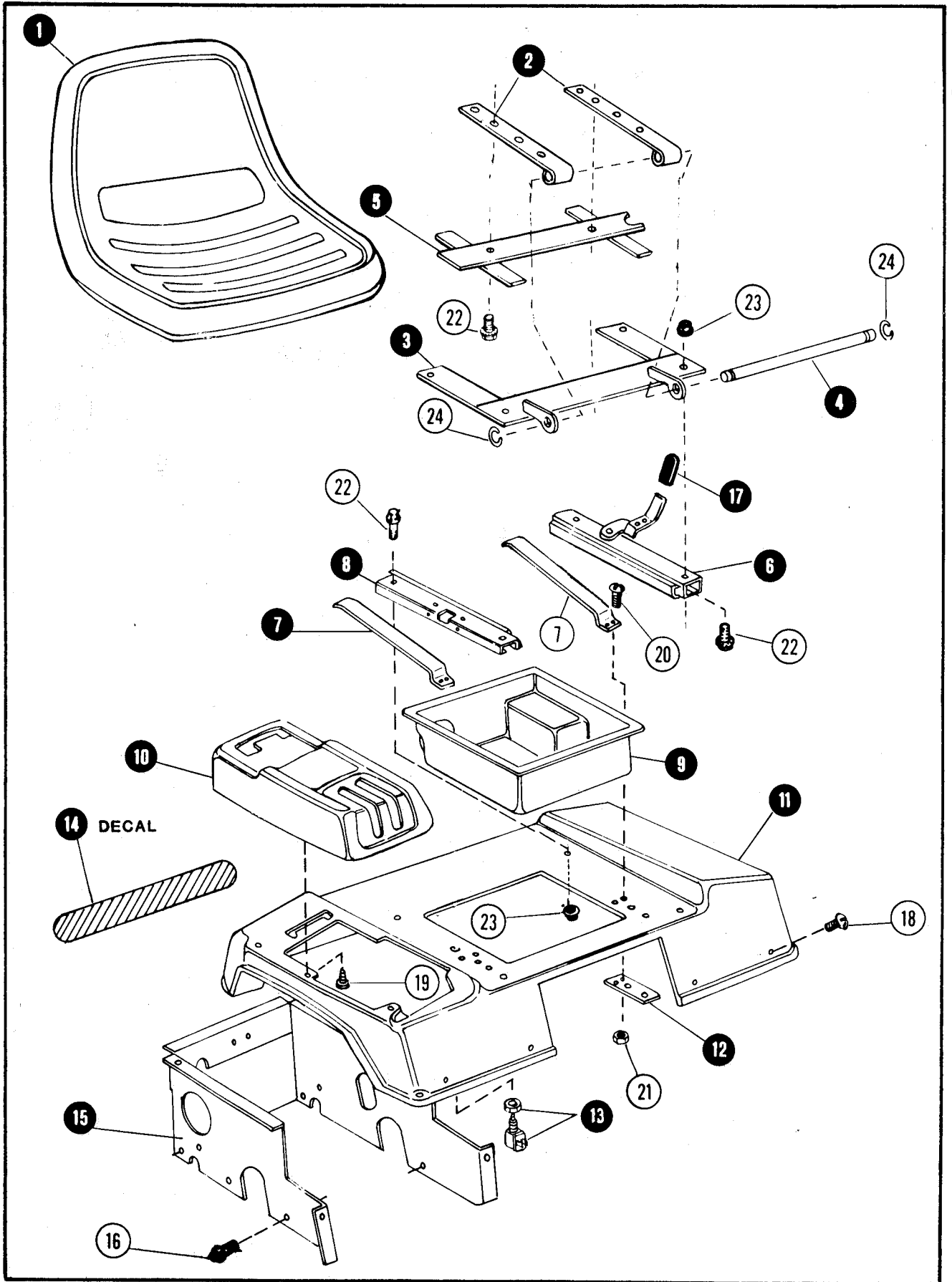
FRAME

TRANSAXLE MOUNTING
SPACERS & BOLTS
SEE PAGE 4.5



ITEM	PART NO.	DESCRIPTION
1	5-9804	MAIN FRAME ASSEMBLY (INCLUDES ITEMS 2 & 3)
2	1-2706	BUSHING, FRAME (4)
3	1-2746	BUSHING, FRAME (2)
4	4-9838	PEDESTAL FRAME
5	9-0582	BOLT 3/8C x 1 HEX FLANGE
6	9-0613	NUT 3/8C HEX FLANGE LOCK
7	6-0453	KIT, IMPLEMENT MTG. BRACKET (INCLUDES ITEMS 8 THRU 13)
8	5-9549	BRACKET, LEFT SIDE (2)
9	1-9599	SPRING, LEFT SIDE (2)
10	5-9550	BRACKET, RIGHT SIDE (2)
11	1-9600	SPRING, RIGHT SIDE (2)
12	9-0587	BOLT, 3/8-16 x 1-1/4 HEX (8)
13	9-0613	NUT 3/8-16 HEX FLANGE LOCK (8)

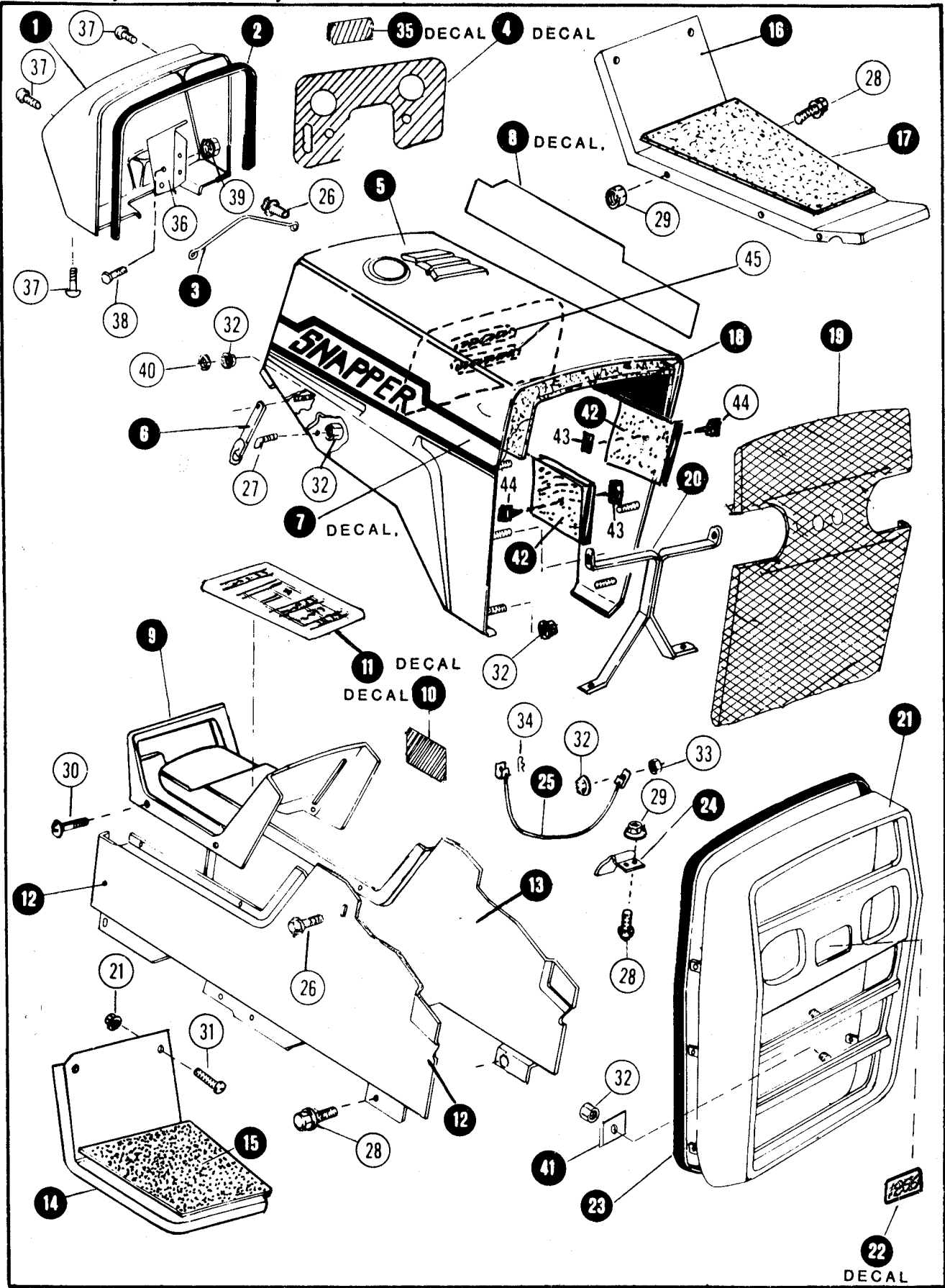
SEAT, REAR FENDER



SEAT, REAR FENDER

ITEM	PART NO.	DESCRIPTION
1	1-9839	SEAT, OPERATOR'S
2	3-9651	STRAP, SEAT HINGE
3	4-9827	HINGE, SEAT - ASSEMBLY
4	2-7524	PIN, SEAT PIVOT
5	4-9591	BAR, DEFLECTOR - ASSEMBLY
6	5-9540	RAIL SEAT - ASSEMBLY
7	3-7769	SPRING, SEAT
8	1-9556	RAIL, SEAT - ASSEMBLY
9	1-9824	COMPARTMENT
10	1-9885	COVER, REAR FENDER (WITH REAR P.T O. CUTOUT)
-	1-9887	COVER, REAR FENDER (WITHOUT REAR P T.O. CUTOUT)
11	3-9830	FENDER REAR
12	3-2022	PLATE, SEAT RETAINER
13	1-2668	SWITCH, SEAT INTERLOCK (INCLUDES NUTS)
14	1-9668	DECAL, SNAPPER (REAR FENDER)
15	3-9833	RISER, REAR FENDER
16	9-0620	BOLT, 3/8C x 7/8 HEX FLANGE LOCK
17	1-2731	CAP, SEAT LATCH
18	9-0605	SCREW, 5/16C x 5/8 ROUND HEAD
19	9-0362	SCREW, 1/4C x 5/8 SELF - TAPPING
20	9-0597	SCREW, 10-24 x 5/8 ROUND HEAD SLOTTED
21	9-0594	NUT, #10-24 HEX LOCK - NYLON
22	9-0606	BOLT, 5/16C x 5/8 HEX FLANGE LOCK
23	9-0585	NUT, 5/16C HEX FLANGE
24	1-2703	RING, RETAINING

HOOD, GRILLE, SIDE PANELS

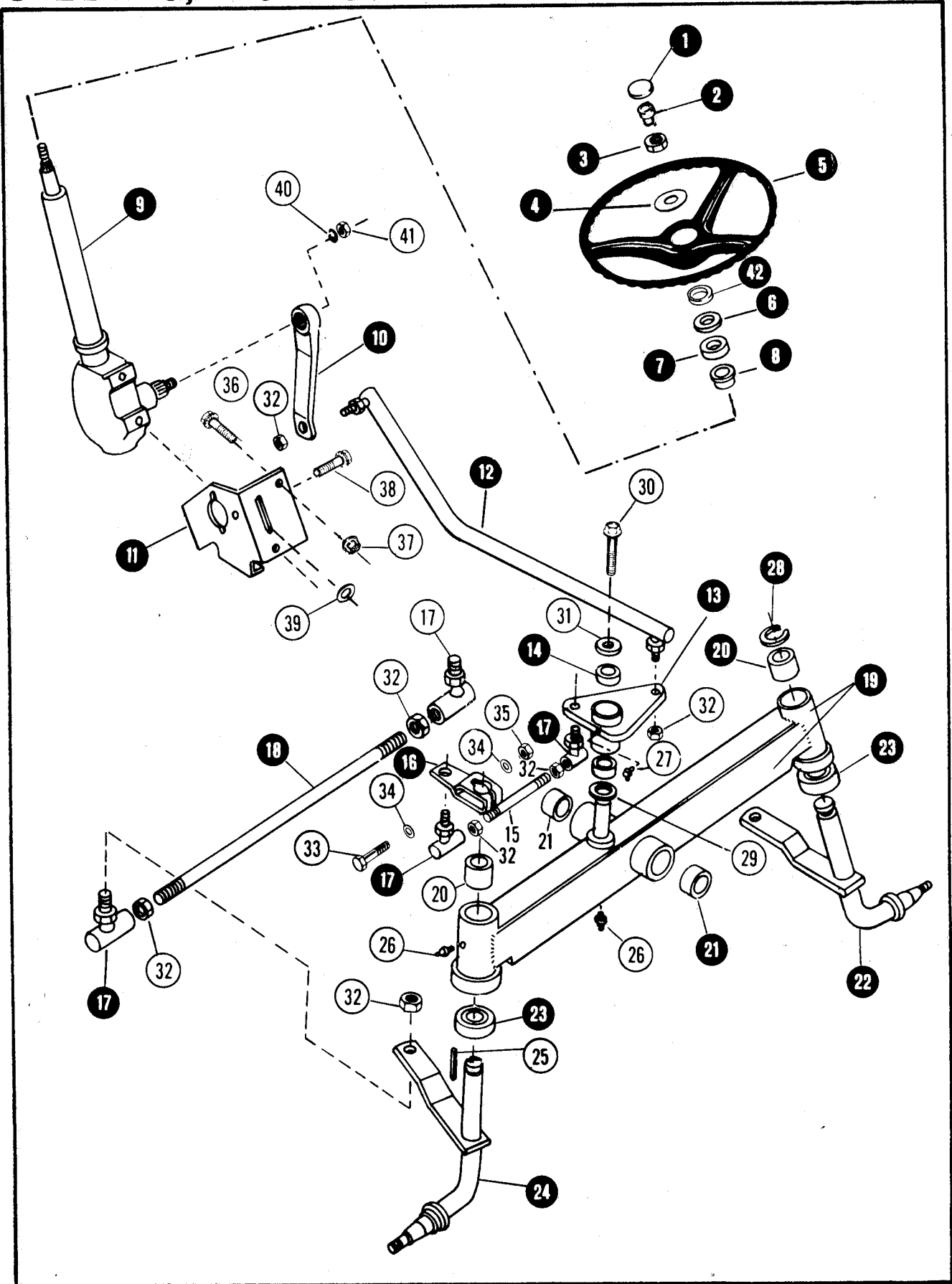


1855A SERIES

HOOD, GRILLE, SIDE PANELS

ITEM	PART NO.	DESCRIPTION
1	1-9823	COWL, INSTRUMENT DASH
2	1-2732	TRIM, COWL MOLDING
3	1-9549	REINFORCEMENT, COWL
4	1-9826	DECAL, INSTRUMENT DASH
5	5-1241	HOOD-PANEL (INCLUDES ITEMS 7, 8, 18, 42, 43, 44)
6	1-8254	STRAP, HOOD RETAINER
7	1-9930	DECAL, SNAPPER RIGHT SIDE HOOD
8	1-9931	DECAL SNAPPER LEFT SIDE HOOD
9	3-9850	PANEL CENTER ACCESS CONSOLE
10	1-8255	DECAL, CAUTION
11	1-9559	DECAL, CONSOLE - OPERATING INSTRUCTION
12	4-9830	PANEL, RIGHT SIDE
13	4-9829	PANEL, LEFT SIDE
14	3-9849	PLATE, RIGHT STEP
15	1-9557	TREAD, RIGHT PLATE
16	3-9848	PLATE, LEFT STEP
17	1-9536	TREAD, LEFT STEP PLATE
18	1-9558	INSULATION, HOOD - PANEL
19	4-9817	GRILLE - SCREEN ASSEMBLY
20	4-9818	BRACE, HOOD
21	4-9816	GRILLE -PANEL ASSEMBLY
22	1-2925	DECAL, 1855 SERIES IDENTIFICATION
23	1-8253	TRIM, HOOD - GRILLE MOLDING
24	3-2023	HINGE, HOOD TILT
25	1-2674	CABLE, HOLD TILT STOP
26	9-0606	BOLT, 5/16F x 5/8 HEX FLANGE
27	1-2675	LATCH, HOOD RETAINER STRAP
28	9-0595	BOLT, 5/16C x 3/4 HEX FLANGE LOCK
29	9-0585	NUT, 5/16C HEX FLANGE LOCK
30	9-0727	SCREW, PAN HEAD 5/16C x 1/2
31	9-0605	SCREW, 5/16C x 5/8 ROUND HEAD
32	9-0583	NUT, 1/4C HEX FLANGE LOCK
33	9-0372	NUT, 1/4C HEX LOCK
34	1-2671	PIN, HAIR
35	1-8257	DECAL REFUEL CAUTION
36	4-7743	BRACKET, COWL MOUNTING L.H. (RIGHT HAND - SEE PAGE 5.3)
37	9-0599	SCREW, 5/16C x 3/4 ROUND HEAD
38	9-0582	BOLT 3/8C x 3/4 HEX
39	9-0613	NUT 3/8C HEX FLANGE LOCK
40	9-0598	WASHER, 1/4 FLAT
41	3-2024	WASHER, GRILLE SCREEN PLATE
42	1-8296	INSULATION, HOOD SIDE (2)
43	1-8298	WASHER, SELF-LOCKING
44	1-8297	ANCHOR, INSULATION
45	1-2729	CUSHION, GAS TANK

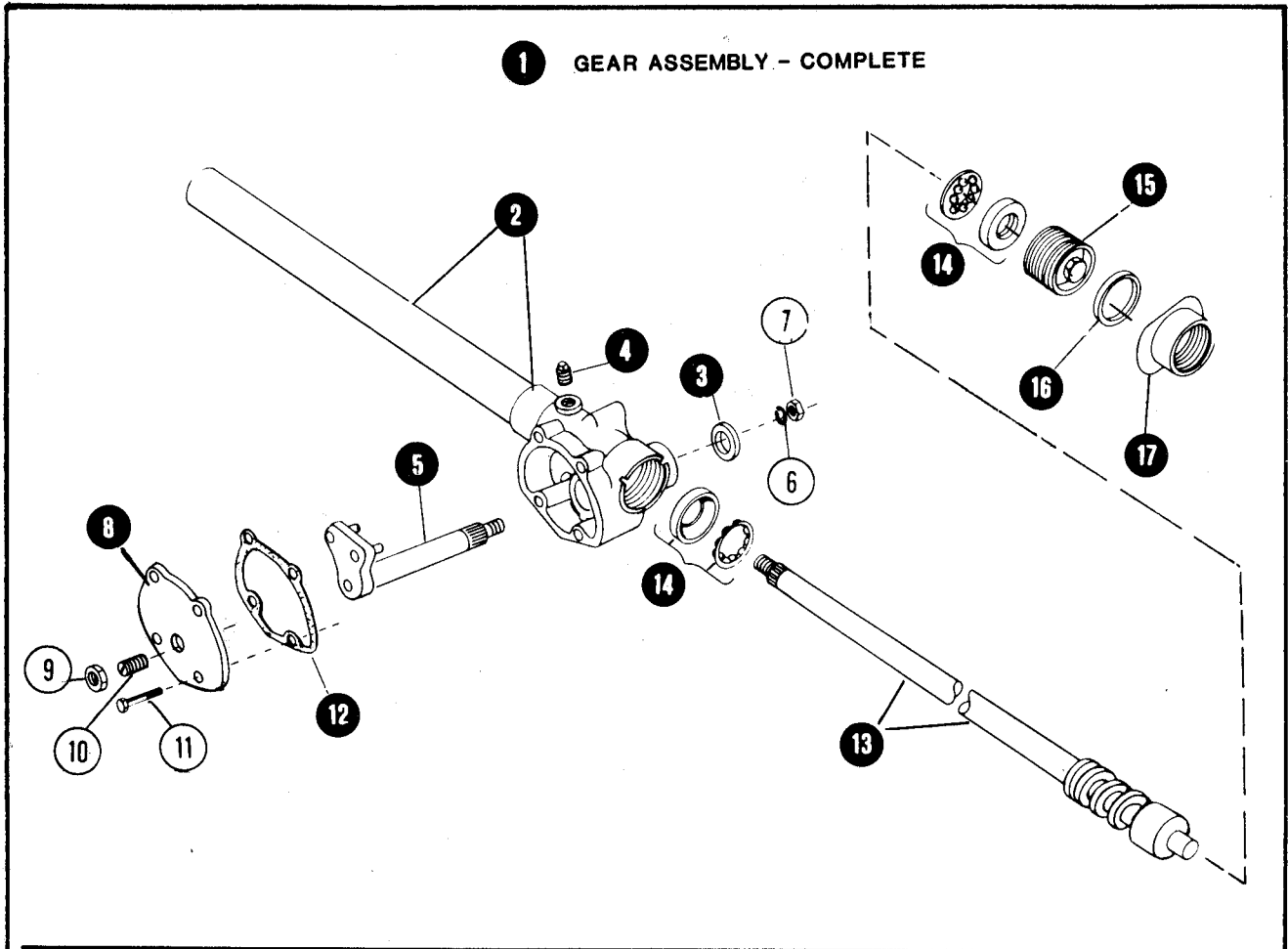
STEERING, FRONT SUSPENSION



STEERING, FRONT SUSPENSION

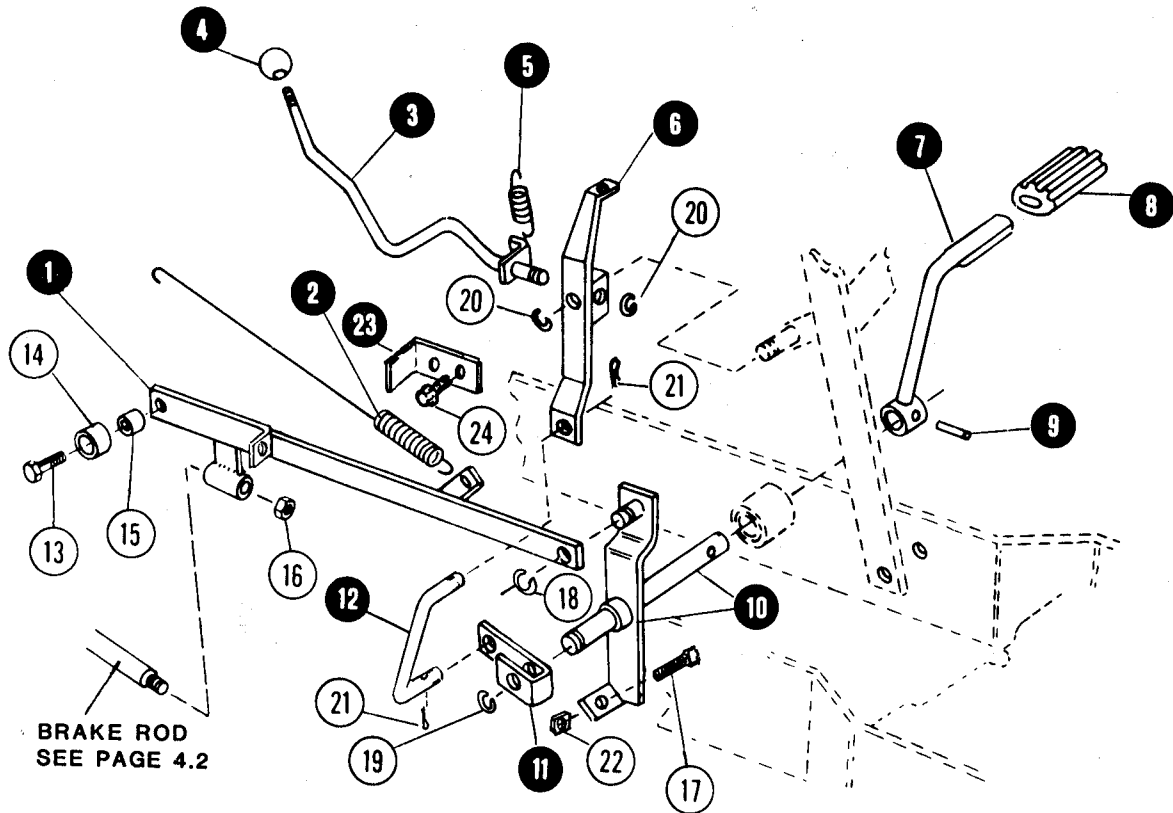
ITEM	PART NO.	DESCRIPTION
1	1-3894	PLATE, SNAPPER EMBLEM
2	1-2667	TAPER - PLUG
3	9-0278	NUT, 5/8 NF HEX
4	9-0183	WASHER, 5/8 FLAT
5	1-9820	WHEEL, STEERING
6	1-2654	COVER, DUST
7	3-2013	CAP, STEERING COLUMN
8	1-8282	BEARING, STEERING
9	1-9854	STEERING GEAR-ASSEMBLY (SEE PAGE 3.3 FOR COMPONENTS)
10	1-8323	ARM, STEERING PITMAN
11	4-9837	BRACKET, GEAR MOUNTING
12	1-9639	LINK, DRAG
13	5-7255	ARM, LEVER - ASSEMBLY (INCLUDES TWO ITEM 14)
14	1-8289	BUSHING, LEVER ARM
15	1-8318	TIE-ROD STEERING
16	3-9662	ARM, STEERING
17	1-8278	BALL-JOINT, STEERING
18	1-8317	TIE-ROD, STEERING
19	5-9542	FRONT-AXLE ASSEMBLY (INCLUDES TWO EACH ITEM 20 & 21)
20	1-2761	BUSHING, SPINDLE
21	1-2762	BUSHING, AXLE
22	4-9600	SPINDLE LEFT AXLE
23	1-8316	BEARING, SPINDLE BALL
24	4-9834	SPINDLE RIGHT AXLE
25	1-2757	KEY, 1/4 SQUARE x 1-1/4
26	1-0817	FITTING, GREASE STRAIGHT DRIVE - IN
27	1-3324	FITTING, GREASE DRIVE - IN
28	1-2730	RING, SPINDLE RETAINING
29	1-2704	WASHER, LEVER ARM THRUST
30	9-0612	BOLT, 3/8C x 3/4 HEX FLANGE
31	3-7776	WASHER, LEVER ARM
32	9-0559	NUT, 1/2 NF HALF HEX
33	9-0637	BOLT, 3/8C x 2-1/2 HEX HEAD
34	3-2030	WASHER 3/8 FLAT
35	9-0504	NUT, 3/8C HEX
36	9-0659	BOLT, 3/8C x 1-1/4 HEX FLANGE
37	9-0613	NUT, 3/8C HEX FLANGE
38	9-0660	BOLT, 7/16C x 3/4 HEX FLANGE
39	3-2012	WASHER, 13/32 x 1 x 1/8
40	9-0333	WASHER, 5/8 LOCK
41	9-0658	NUT, 5/8 NF HEX
42	1-2677	SLEEVE, STEERING

STEERING GEAR



ITEM	PART NO.	DESCRIPTION
1	1-9854	STEERING GEAR ASSEMBLY (INCLUDES FOLLOWING)
2	1-3751	HOUSING - ASSEMBLY (INCLUDES ITEM 3)
3	1-3061	SEAL, OIL
4	1-3752	PLUG, 1/4 PIPE
5	1-3756	SHAFT, LEVER - ASSEMBLY
6	9-0333	WASHER, 5/8 LOCK
7	9-0658	NUT, 5/8 N.F. HEX
8	1-3064	COVER, SIDE
9	1-3758	NUT, ADJUSTING SCREW LOCK
10	1-3757	SCREW, ADJUSTING
11	1-3065	BOLT, COVER RETAINING (4)
12	1-3759	GASKET, SIDE COVER TO HOUSING
13	1-3754	CAM & TUBE ASSEMBLY
14	1-3716	KIT, BALL & CUP (2 REQUIRED)
15	1-3062	PLUG, HOUSING END
16	1-3753	SEAL, HOUSING END PLUG
17	1-3063	NUT, END PLUG LOCK

CONTROLS - TRANSMISSION & BRAKE

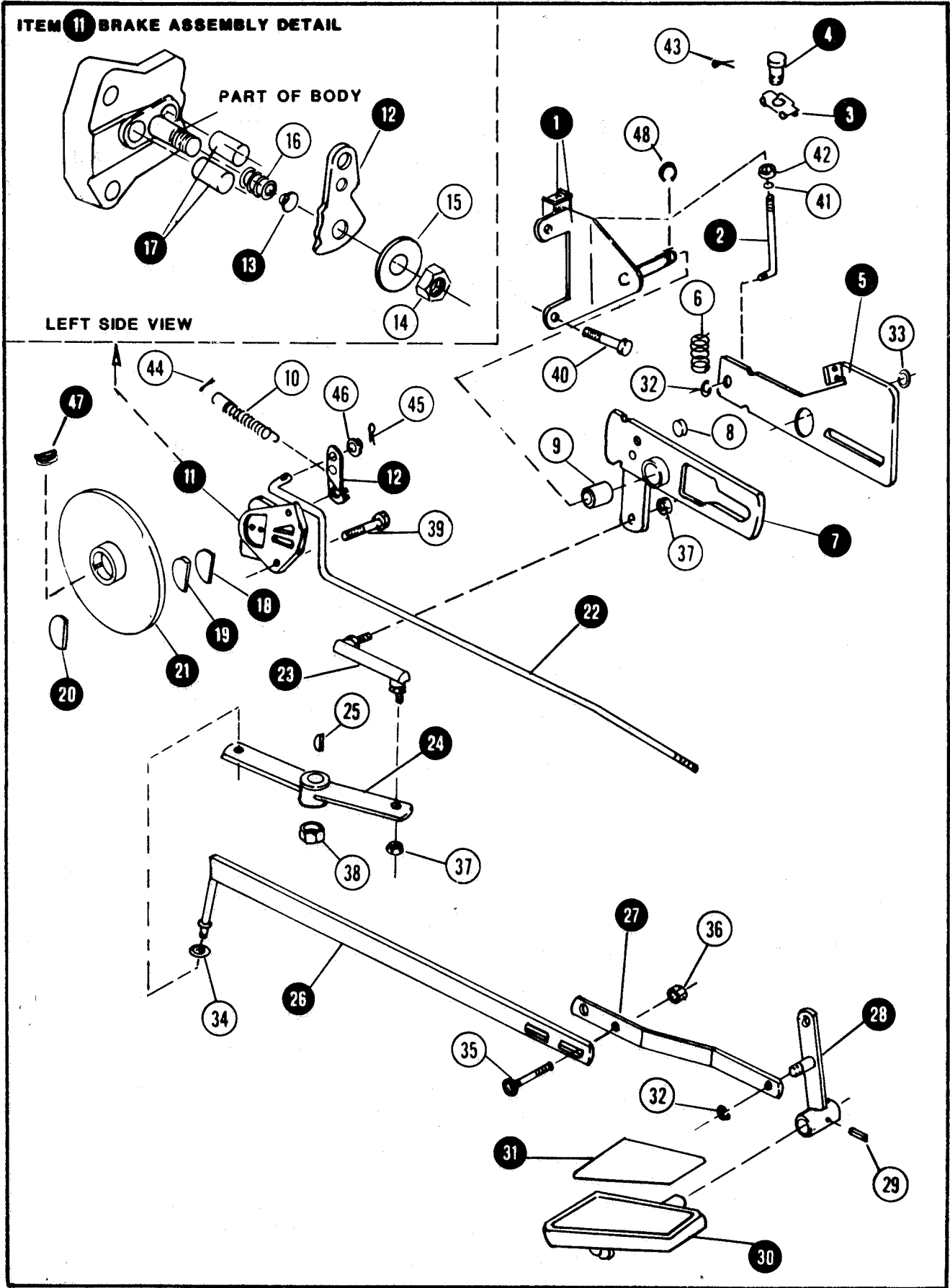


BRAKE ROD
SEE PAGE 4.2

ITEM	PART NO.	DESCRIPTION
1	4-9664	STRAP BRAKE AND SELECTOR - ASSEMBLY
2	1-8325	SPRING, STRAP RETURN
3	4-9593	LEVER, SPEED SELECTOR SHIFT
4	1-2659	KNOB, SHIFT LEVER
5	1-8299	SPRING, SELECTOR LEVER TENSION
6	4-9605	LEVER, SELECTOR
7	4-7749	PEDAL, PARKING BRAKE
8	1-2661	PAD, PEDAL
9	1-2701	PIN, GROOVE (1/4 x 1-1/4)
10	4-9606	SHAFT, PEDAL
11	3-7839	LINK, PEDAL SHAFT SELECTOR
12	1-8324	LINK, SELECTOR
13	9-0580	BOLT, 1/4C x 3/4 HEX HEAD
14	2-7540	ROLLER, NEUTRAL RETURN
15	2-7541	SPACER, STEEL
16	9-0194	NUT, 5/16C HEX LOCK
17	1-2775	SCREW, SELECTOR LINK ADJUSTER
18	1-2735	RING, RETAINING (for 5/16"shaft)
19	1-2696	RING, RETAINING (for 1/2"shaft)
20	1-2703	RING, RETAINING (for 3/8"shaft)
21	9-0365	COTTER-PIN, 1/8 x 3/4
22	9-0628	NUT, 5/16C MACHINE SCREW
23	1-2948	ACTIVATOR, SHIFT INTERLOCK SWITCH
24	9-0302	SCREW, 1/4 x 3/8 SELF-TAPPING

TRANSMISSION & BRAKE CONTROLS

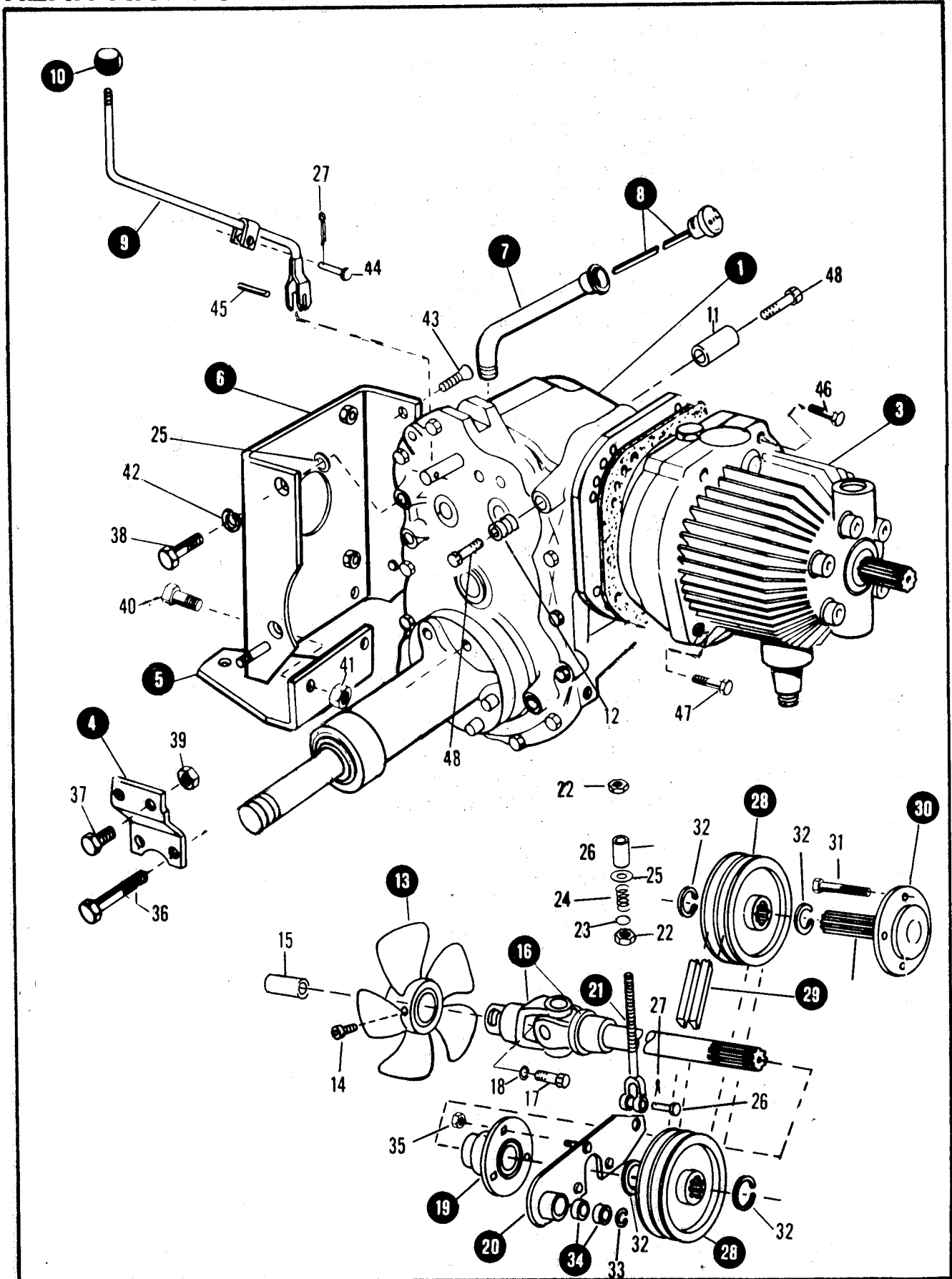
ITEM 11 BRAKE ASSEMBLY DETAIL



TRANSMISSION & BRAKE CONTROLS

ITEM	PART NO.	DESCRIPTION
1	4-9846	BRACKET, TRUNNION MOUNTING
2	1-8320	LINK, NEUTRAL ADJUSTING
3	1-2736	RETAINER, ADJUSTING LINK
4	2-7539	STUD, ADJUSTING
5	3-9667	GUIDE, ROLLER
6	1-8321	SPRING, NEUTRAL RETURN
7	5-1217	CAM, NEUTRAL RETURN - ASSEMBLY (INCLUDES BEARING)
8	1-8322	PLUG, FRICTION
9	1-2784	BEARING, PART OF ITEM 7
10	1-8312	SPRING, BRAKE RETURN
11	5-1048	BRAKE ASSEMBLY (INCLUDES ITEMS 12 THRU 20)
12	1-3695	CAM
13	1-3696	FERRULE
14	1-2965	NUT, CAM RETAINING
15	1-2966	WASHER THRUST
16	1-3697	SPRING, PUSH PIN
17	1-3698	PIN, PUSH (2)
18	1-3699	DISC, PAD BACK-UP
19	1-3700	PAD, FRICTION
20	1-3701	PAD, FRICTION
21	4-9602	DISC ASSEMBLY
22	1-9869	ROD, AXLE BRAKE
23	1-8333	LINK, TRANSMISSION LEVER
24	4-9613	LEVER, DIRECTIONAL CONTROL
25	1-2782	KEY, WOODRUFF
26	4-9845	LINK, REAR CONTROL
27	3-7855	LINK, FRONT CONTROL
28	4-9597	LEVER, PEDAL PIVOT
29	1-2701	PIN, GROOVE 1/4 x 1.25"
30	4-9833	PEDAL, DIRECTIONAL CONTROL
31	1-9840	TREAD, CONTROL PEDAL
32	1-2735	RING, RETAINING
33	1-2769	RING, RETAINING
34	1-2702	RING, RETAINING
35	9-0647	BOLT 1/4NF x 3/4 CARRIAGE
36	9-0653	NUT, 1/4 NF HEX
37	9-0155	NUT, 3/8C HEX
38	9-0258	NUT, 1/2C HEX
39	9-0587	BOLT, 3/8C x 1-1/4 HEX
40	9-0590	SCREW, HEX HEAD CAP 3/8-16 x 3 GR.5
41	1-2768	RING, RETAINING
42	1-9570	RING, ADJUSTING STUD
43	9 0641	COTTER-PIN, 1/16 x 1"
44	9-0650	COTTER-PIN, 5/16-1"
45	9-0555	COTTER-PIN, 3/32 x 1/2"
46	9-0055	WASHER, 1/4 FLAT
47	1-2684	KEY, WOODRUFF
48	1-2696	RING, RETAINING

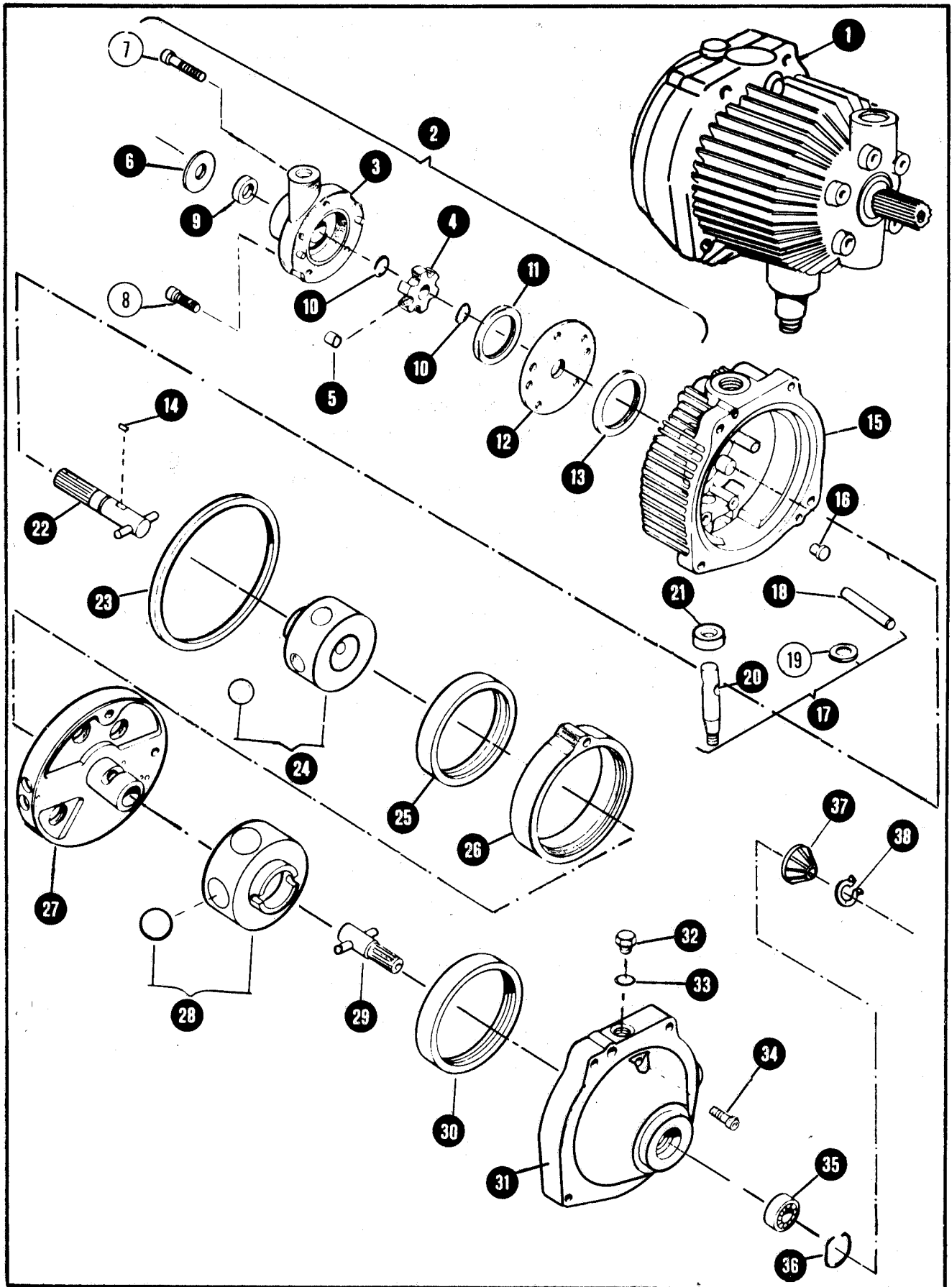
REAR AXLE & DRIVE SHAFT



REAR AXLE & DRIVE SHAFT

ITEM	PART NO.	DESCRIPTION
1	1-9852	REAR AXLE - COMPLETE (PEERLESS 2520-order from Peerless Dealer)
2	1-9568	GASKET, REAR AXLE TO TRANSMISSION
3	1-9934	TRANSMISSION (SEE PAGES 4.7 & 4.8 FOR PARTS)
4	3-9655	BRACKET, AXLE MOUNTING (SAME BOTH SIDES)
5	3-9857	DRAWBAR EXTENSION
6	4-9836	DRAWBAR ASSEMBLY
7	1-9571	TUBE, TRANSMISSION DIPSTICK
8	5-9539	DIPSTICK, TRANSMISSION
9	4-9592	LEVER, REAR AXLE SHIFT
10	1-2659	KNOB, SHIFT LEVER
11	2-7531	BUSHING, AXLE TO FRAME -LEFT SIDE
12	2-7530	BUSHING, AXLE TO FRAME - RIGHT SIDE
13	5-9538	FAN, TRANSMISSION
14	9-0638	SET-SCREW, 1/4-20 x 5/8
15	2-1821	SPACER, U-JOINT RETAINING BOLT
16	4-9906	SHAFT, DRIVE
17	9-0745	BOLT, 1/4-20 x 1 (U-JOINT RETAINER)
18	9-0746	WASHER, BELVILLE
19	1-9567	BEARING, DRIVE SHAFT
20	4-9594	SUPPORT, DRIVE SHAFT
21	4-7750	ROD-GUIDE
22	1-2742	NUT, 3/8C HALF HEX
23	9-0122	WASHER, 3/8 FLAT
24	1-8311	SPRING, ROD GUIDE
25	9-0250	WASHER
26	1-2743	PIN, CLEVIS
27	9-0037	COTTER-PIN, 3/32 x 3/4
28	4-9590	PULLEY, DRIVE
29	1-9550	V-BELTS (MATCHED SET OF TWO)
30	4-9589	ADAPTER, ENGINE
31	9-0636	BOLT, 5/16-18 x 1
32	1-2899	RING, RETAINING .750 I.D.
33	1-2744	RING, RETAINING .625 I.D.
34	1-2746	BEARING
35	9-0585	NUT, 5/16 HEX FLANGE LOCK
36	9-0651	BOLT, 1/2C x 2-3/4 HEX HEAD
37	9-0622	BOLT, 1/2C x 1 HEX HEAD
38	9-0656	BOLT, 1/2C x 1-1/4 HEX HEAD
39	9-0619	NUT, 1/2C HEX
40	9-0563	BOLT, 3/8C x 1" HEX HEAD
41	9-0593	NUT, 3/8C HEX
42	9-0254	WASHER, 1/2" LOCK
43	9-0657	SCREW, 1/2C x 7/8 FLAT HEAD
44	1-2734	PIN, CLEVIS
45	1-2765	PIN, SPIROL 1/4 x 2-1/4
46	9-0637	BOLT, 3/8C x 2-1/2 HEX HEAD (2)
47	9-0590	BOLT, 3/8C x 3 HEX HEAD (2)
48	9-0652	BOLT, 1/2C x 3 HEX HEAD

HYDROSTATIC TRANSMISSION



1855A SERIES

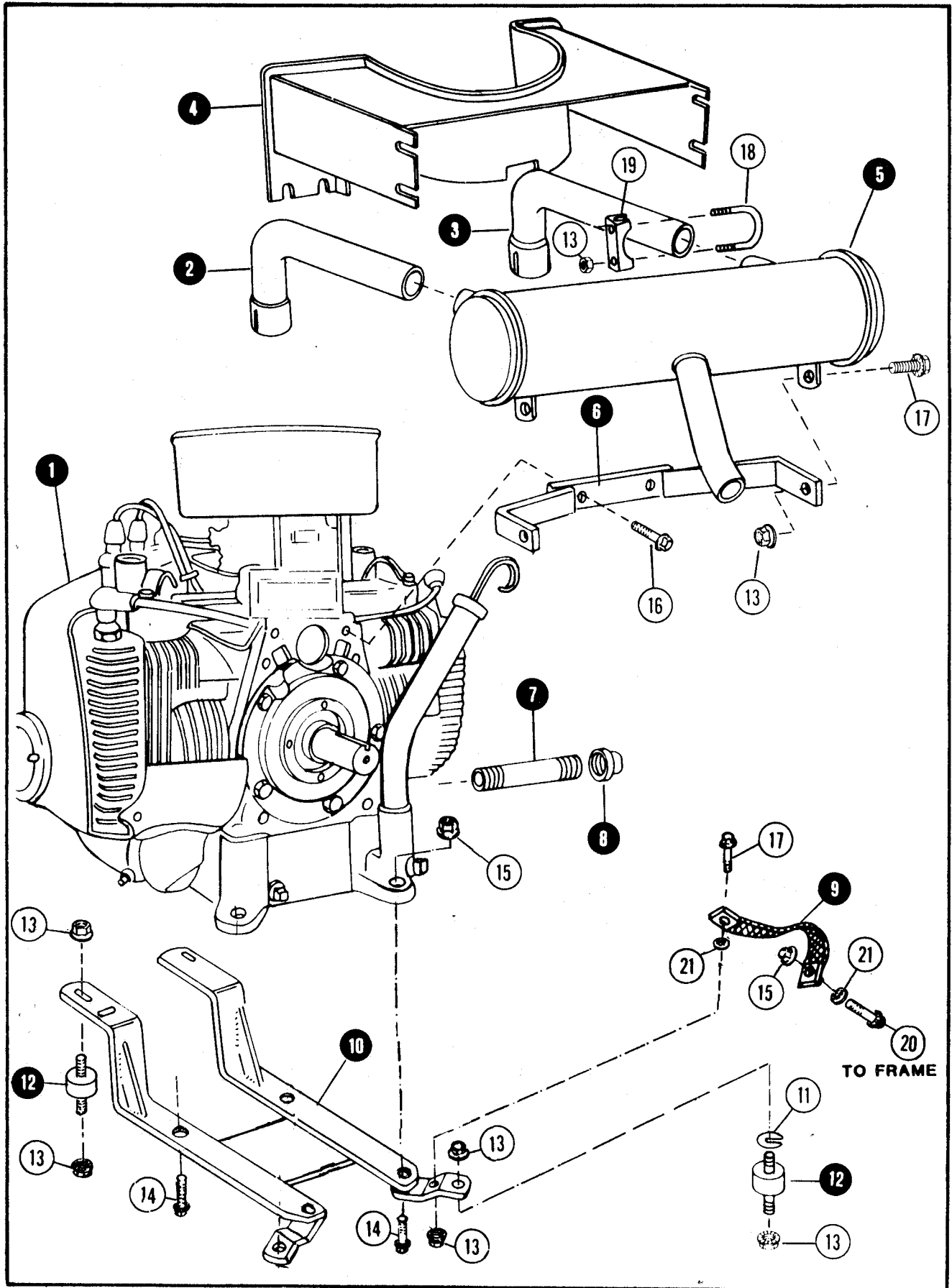
4.6

HYDROSTATIC TRANSMISSION

ITEM	PART NO.	DESCRIPTION
1	1-9934	HYDROSTATIC TRANSMISSION (INCLUDES ITEMS THRU #36)
-	-	- EATON MODEL 1100-031
2	1-3744	KIT, CHARGE PUMP (INCLUDES ITEMS 3 THRU 14)
3	-	BODY, CHARGE PUMP (PART OF KIT ONLY)
4	-	CARRIER, CHARGE PUMP (PART OF KIT ONLY)
5	-	ROLL, CHARGE PUMP (PART OF KIT ONLY)
6	1-3730	SHIELD, GRASS
7	1-3731	SCREW, 5/16C x 1-3/4 SOCKET HEAD (QTY. 1)
8	1-3732	SCREW 5/16C x 1-1/4 SOCKET HEAD (QTY. 4)
9	1-3725	SEAL OIL
10	1-3726	RING, CARRIER SNAP (QTY. 2)
11	1-3727	RING, CHARGE PUMP SEALING
12	1-2975	PLATE, CHARGE PUMP TO COVER
13	1-3728	RING, PLATE TO COVER SEALING
14	1-3729	PIN, CHARGE PUMP DRIVE
15	1-3734	COVER ASSEMBLY, TRANSMISSION (INCLUDES ITEM 17)
16	1-3735	BUTTON, COVER DAMPENER
17	1-2973	KIT, CAM RING CONTROL (INCLUDES ITEMS 18,19,20,21)
18	-	PIN, CAM RING CONTROL (PART OF KIT ONLY)
19	-	WASHER, CONTROL (PART OF KIT ONLY)
20	-	SHAFT, CAM RING CONTROL (PART OF KIT ONLY)
21	-	SEAL, CAM RING CONTROL (PART OF KIT - SAME AS ITEM #9)
22	1-3733	SHAFT, INPUT - ASSEMBLY
23	1-3736	RING, COVER TO BODY SEALING
24	1-2972	ROTOR, BALL PUMP - ASSEMBLY
25	1-2971	RACE, PUMP
26	1-3737	RING, CAM (INCLUDES ITEM 25)
27	1-2970	PINTLE, TRANSMISSION - COMPLETE ASSEMBLY
28	1-2967	ROTOR, BALL MOTOR - ASSEMBLY
29	1-3739	SHAFT, OUTPUT - ASSEMBLY
30	1-2988	RACE, MOTOR ROTOR
31	1-2989	BODY, TRANSMISSION
32	1-2964	PLUG, O-RING (INCLUDES ITEM 33)
33	1-3743	O-RING
34	1-3732	SCREW, 5/16C x 1-1/4 SOCKET HEAD (QTY.2)
35	1-3904	BEARING, OUTPUT SHAFT
36	1-3742	RING, RETAINING
37	1-8319	PINION-GEAR (NOT PART OF ITEM 1 - ORDER SEPARATELY)
38	1-2763	RING, RETAINING (NOT PART OF ITEM 1 - ORDER SEPARATELY)

NOTE: See page 4.4 for Rear Axle to Transmission Gasket.

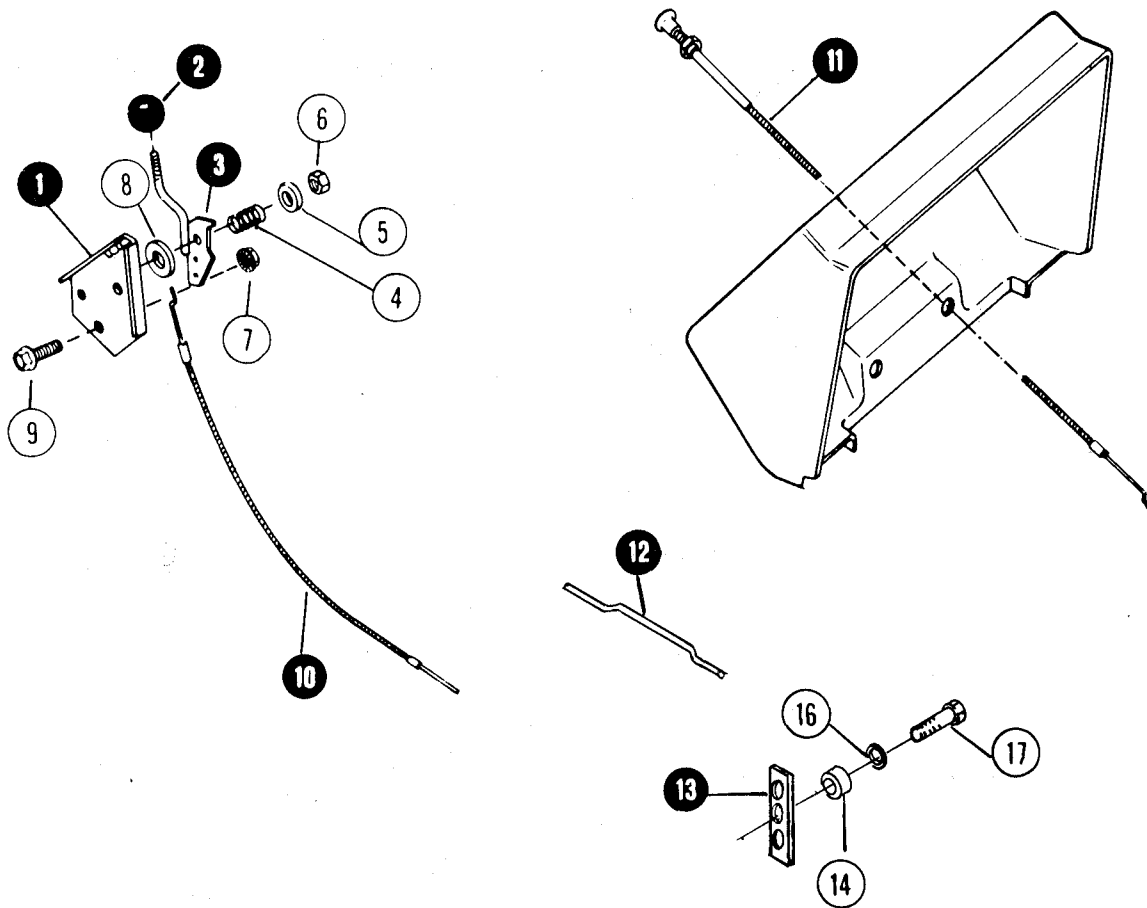
ENGINE & MOUNTING



ENGINE & MOUNTING

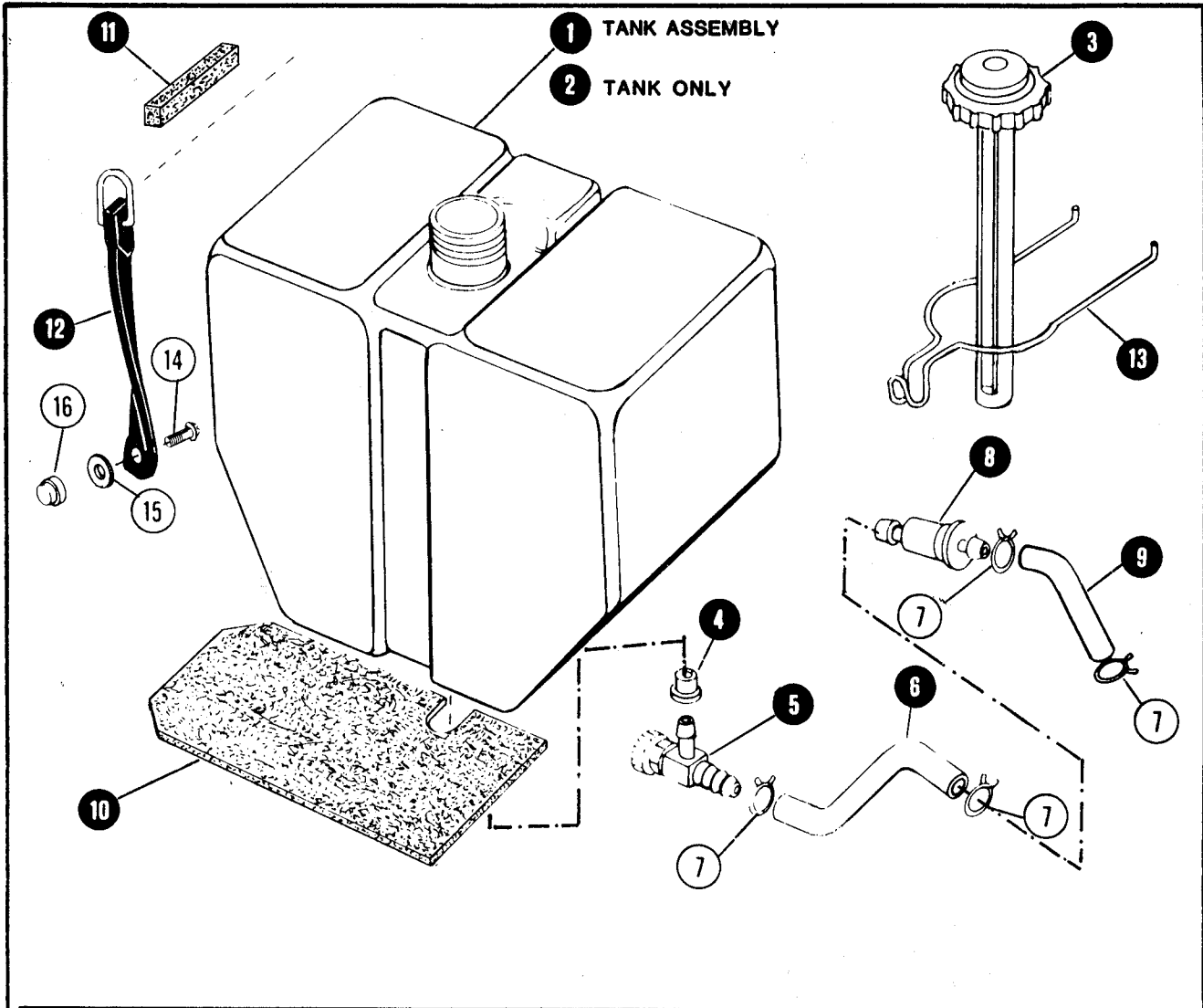
ITEM	PART NO.	DESCRIPTION
1	0-0028	ENGINE, ONAN TWO CYLINDER MODEL B48M-GA018
-		NOTE : PURCHASE ENGINE PARTS FROM ONAN DEALER
2	1-9555	PIPE, RIGHT SIDE EXHAUST
3	1-9554	PIPE, LEFT SIDE EXHAUST
4	4-9825	SHIELD HEAT
5	1-9909	MUFFLER, STANDARD EXHAUST
5A	6-0383	MUFFLER, SPARK ARRESTOR (ACCESSORY KIT)
6	4-9826	BRACKET, MUFFLER MOUNTING
7	1-8307	NIPPLE , OIL DRAIN PIPE
8	1-2738	CAP, DRAIN - 3/8 SQUARE HEAD PIPE
9	1-8261	STRAP, ENGINE GROUND
10	4-9831	BRACKET, ENGINE MOUNTING
11	3-7770	C-WASHER (USE AS SHIMS - AS REQUIRED)
12	1-8301	DAMPENER, ENGINE VIBRATION MOUNT
13	9-0585	NUT, 5/16C HEX FLANGE LOCK
14	9-0614	BOLT, 3/8C x 1-1/2 HEX FLANGE
15	9-0613	NUT, 3/8C HEX FLANGE LOCK
16	9-0582	BOLT, 3/8C x 1" HEX FLANGE
17	9-0595	BOLT, 5/16C x 3/4 HEX FLANGE
18	1-2657	U-BOLT EXHAUST PIPE
19	3-2017	CLAMP, U-BOLT
20	9-0645	BOLT, 3/8C x 1" CARRIAGE
21	9-0742	WASHER, 3/8 EXTERNAL TOOTH LOCK

CONTROLS: THROTTLE & CHOKE



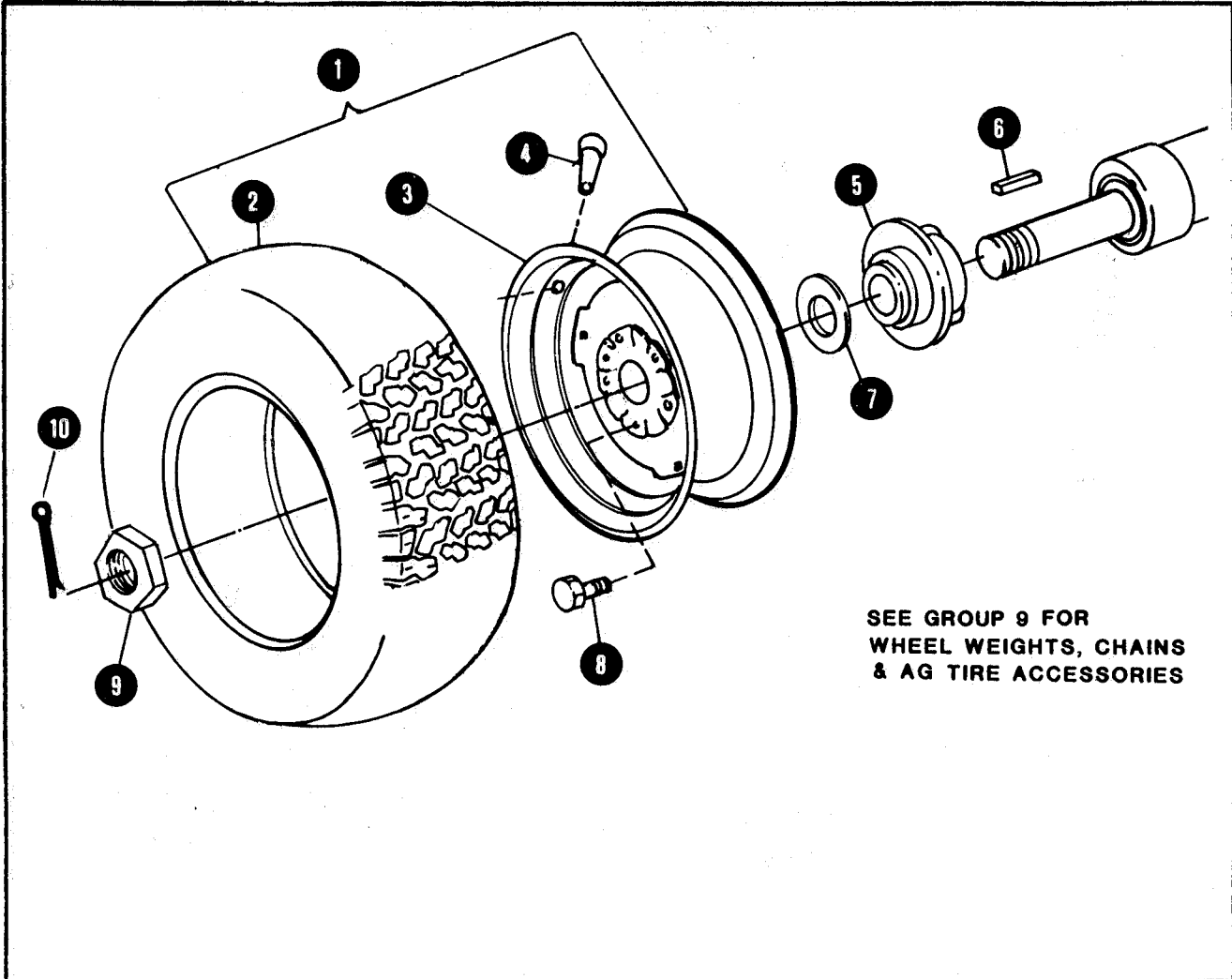
ITEM	PART NO.	DESCRIPTION
1	4-9822	BRACKET, THROTTLE CONTROL
2	1-8271	KNOB, THROTTLE ARM
3	4-9580	ARM, THROTTLE CONTROL
4	1-8267	SPRING, ARM TENSION
5	9-0188	WASHER, 5/16FLAT
6	1-2687	NUT, 5/16C HEX LOCK
7	9-0613	NUT, 3/8C HEX FLANGE LOCK
8	1-8264	WASHER, FRICTION
9	9-0582	BOLT, 3/8C x 3/4 HEX FLANGE
10	1-8266	CABLE, THROTTLE CONTROL
11	1-8305	CABLE, CHOKE CONTROL
12	1-8303	LINK, CHOKE
13	3-7811	LEVER, CARBURETOR
14	2-7526	SPACER, LEVER
15	1-2739	SCREW, CHOKE CABLE CLAMP
16	9-0010	WASHER, #10 SAE
17	9-0644	SCREW, 10-24 x 3/8

FUEL TANK & LINES



ITEM	PART NO.	DESCRIPTION
1	5-7271	FUEL TANK ASSEMBLY (INCLUDES ITEMS 2,3,4,5)
2	1-9838	TANK, FUEL
3	1-9552	CAP & GAUGE ASSEMBLY
4	1-2337	BUSHING, VALVE TO TANK
5	1-8248	VALVE, FUEL SHUT-OFF
6	3-2039	LINE FUEL - 5" LONG
7	1-1137	CLAMP, FUEL LINE
8	1-8247	FILTER, IN-LINE FUEL
9	3-2038	LINE, FUEL - 3" LONG
10	1-9837	PAD, FUEL TANK- LOWER
11	1-2917	PAD FUEL TANK- UPPER
12	1-8403	RETAINER STRAP - ASSEMBLY
13	1-9553	CLAMP, TANK RETAINER
14	9-0640	SCREW, #10C x 1-1/4 ROUND HEAD
15	3-2037	WASHER, 7/32 x 1 x 5/64"
16	9-0594	RING, TANK RETAINER

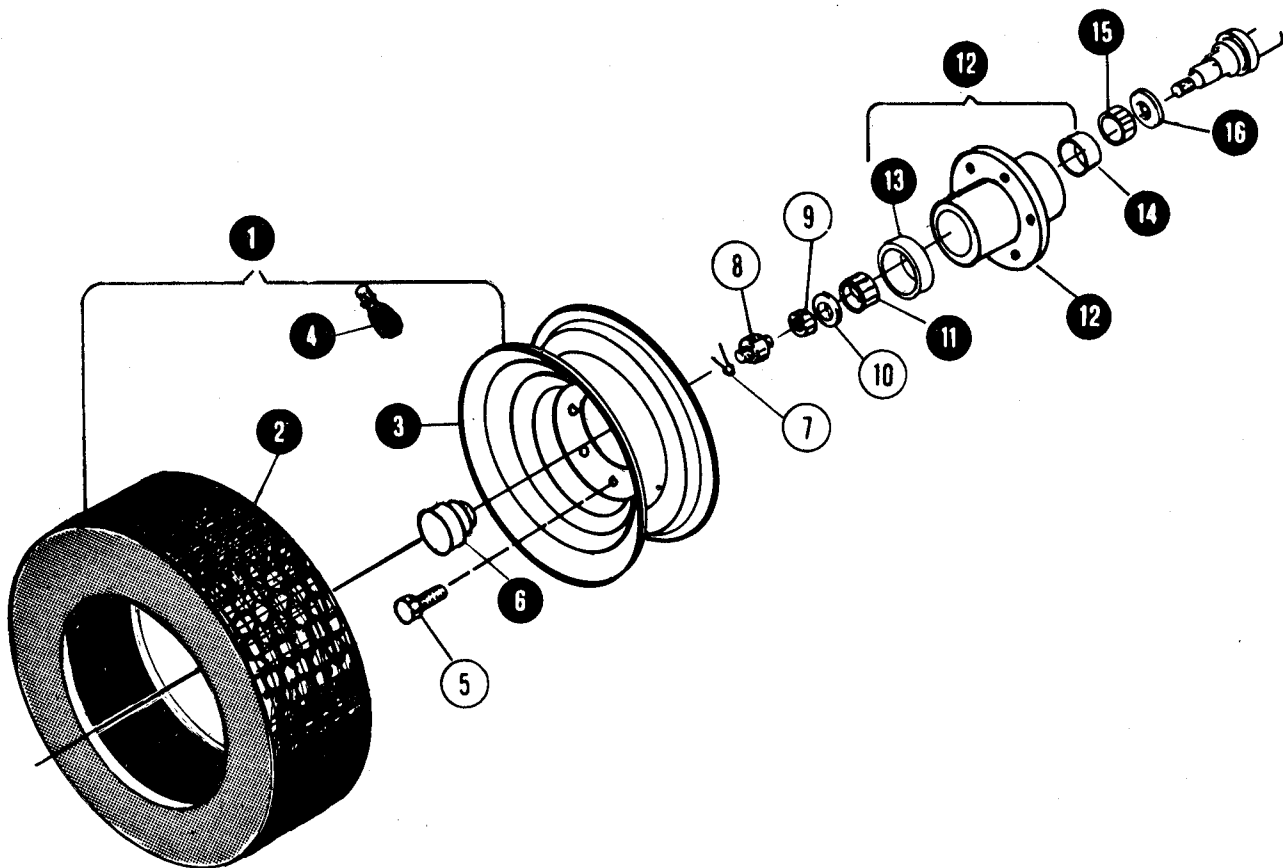
REAR WHEELS



SEE GROUP 9 FOR
WHEEL WEIGHTS, CHAINS
& AG TIRE ACCESSORIES

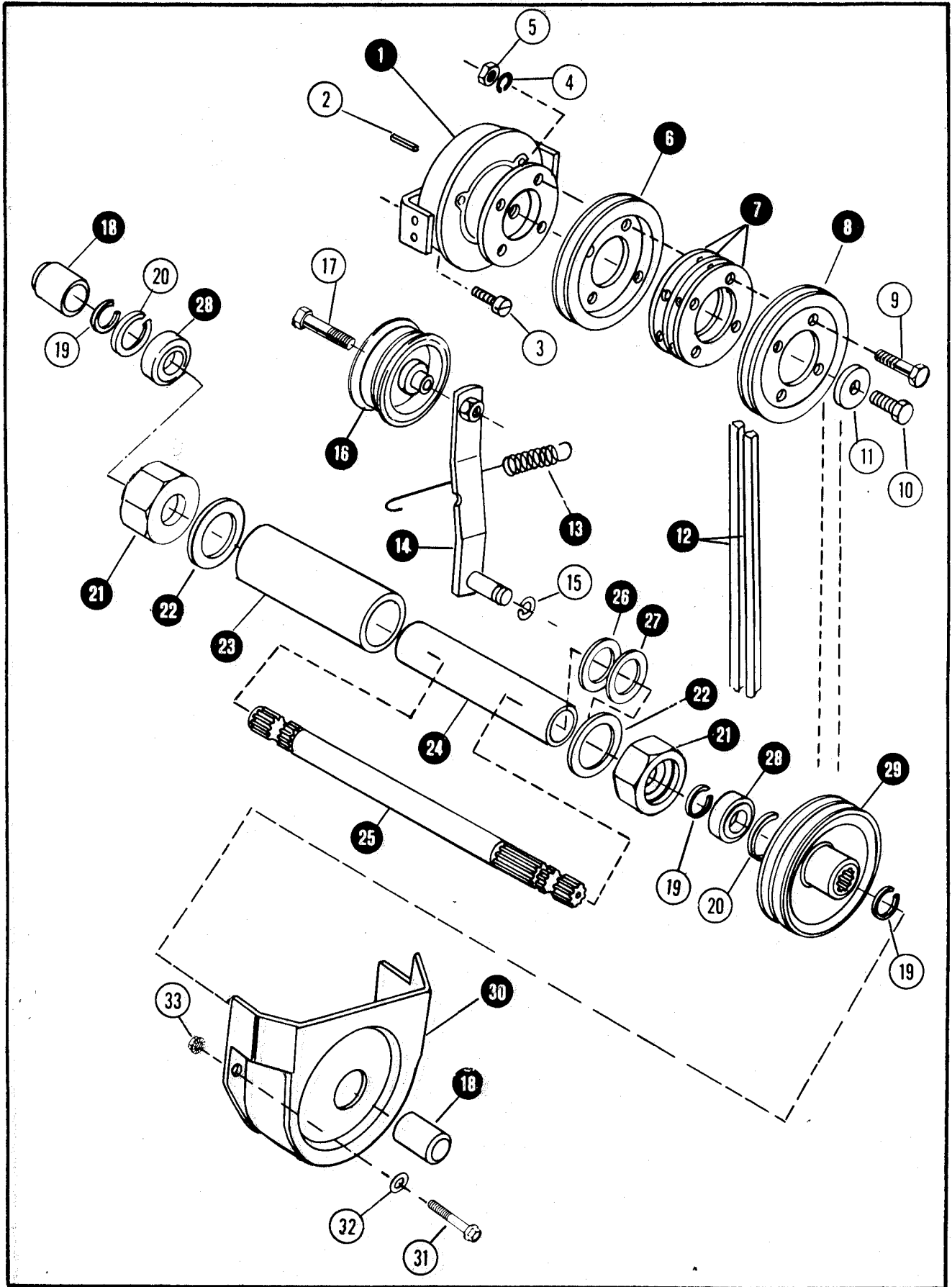
ITEM	PART NO.	DESCRIPTION
1	5-9816	WHEEL ASSEMBLY (INCLUDES ITEMS 2,3 & 4)
2	1-9683	TIRE, 26 x 12 x 12
3	1-9682	RIM
4	1-2234	VALVE, AIR
5	1-9850	HUB, REAR WHEEL
6	1-8327	KEY
7	9-0279	WASHER, 3/4" FLAT
8	9-0722	BOLT, RIM TO HUB
9	9-0648	NUT, 3/4 - 16 UNC
10	9-0649	COTTER-PIN, 3/16 x 1-1/4

FRONT WHEELS



ITEM	PART NO.	DESCRIPTION
1	5-9560	WHEEL ASSEMBLY (INCLUDES ITEMS 2,3,4)
2	1-9685	TIRE, TUBELESS
3	1-9686	RIM (INCLUDES ITEM 4)
4	1-2234	VALVE, AIR
5	1-2683	BOLT, 3/8NF x 23/32 HEX SPACIAL LUG
6	1-8314	CAP, WHEEL HUB GREASE
7	9-0654	COTTER-PIN, 5/32 x 1-1/4
8	1-8313	RETAINER, HUB TO SPINDLE NUT
9	1-2884	NUT, 3/4 NF HEX
10	3-2027	WASHER, 49/64" FLAT
11	1-8315	BEARING, CONE HUB TO SPINDLE
12	5-7256	HUB, FRONT WHEEL-ASSEMBLY (INCLUDES ITEMS 13,14)
13	1-2931	CUP, OUTER HUB
14	1-2932	CUP, INNER HUB
15	1-2759	BEARING, HUB TO SPINDLE - INNER
16	1-2760	SEAL, HUB TO SPINDLE

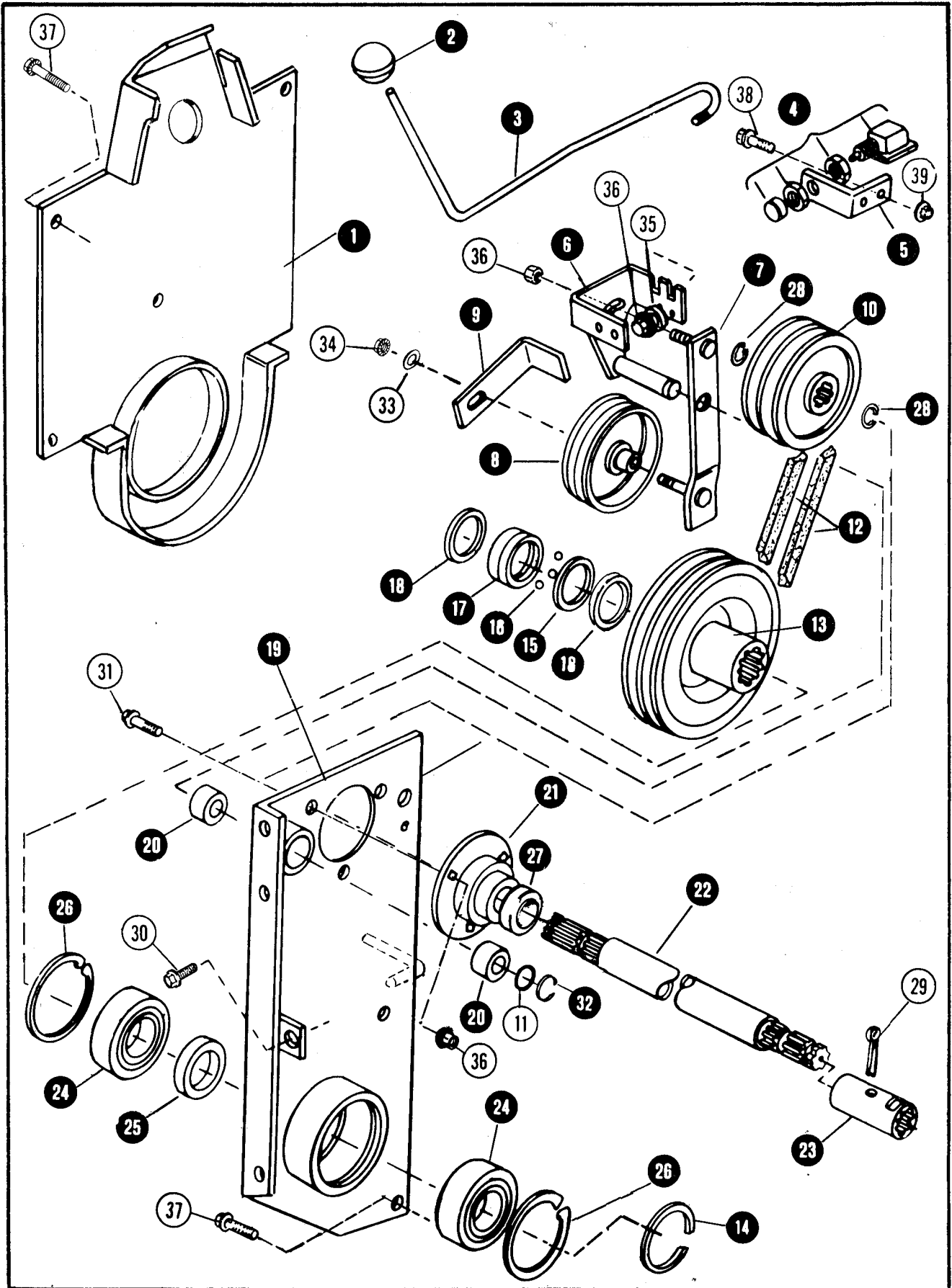
CLUTCH & MID-POWER TAKE OFF



CLUTCH & MID-POWER TAKE OFF

ITEM	PART NO.	DESCRIPTION
1	1-9836	CLUTCH, ELECTRIC - ASSEMBLY (INCLUDES ITEMS 1A & 1B)
1A	1-3722	ROTOR & ARMATURE ASSEMBLY (NOT SHOWN)
1B	1-3825	FIELD ASSEMBLY (NOT SHOWN)
2	1-8293	KEY, CLUTCH TO CRANKSHAFT
3	9-0024	SCREW, #10-32 x 1/2 FILLISTER HEAD SLOTTED
4	9-0052	WASHER 1/4" LOCK
5	9-0063	NUT, 1/4C HEX
6	1-8292	PULLEY, CLUTCH DRIVER (SAME AS ITEM 8)
7	3-7810	SPACER, PULLEY
9	9-0639	BOLT, 1/4C x 1-1/2 HEX HEAD
10	9-0587	BOLT, 3/8C x 1-1/4 HEX HEAD
11	1-8295	WASHER, CLUTCH RETAINER
12	1-9551	V-BELTS, (MATCHED SET)
13	1-9564	SPRING, IDLER PULLEY
14	4-9596	ARM, IDLER
15	1-2744	RING, IDLER ARM RETAINING
16	1-8326	PULLEY, IDLER
17	9-0730	BOLT, 3/8C x 1-3/4 HEX HEAD
18	1-8294	CAP, MID P.T.O. VINYL
19	1-2748	RING, RETAINING (PULLEY TO SHAFT)
20	1-2800	RING, REATINING (BEARING TO AXLE SLEEVE)
21	1-9573	RETAINER, BEARING & AXLE SLEEVE
22	3-7814	WASHER, FRONT AXLE THRUST
23	3-7529	SPACER, AXLE PIVOT
24	2-9518	SLEEVE, AXLE MOUNTING
25	2-9811	SHAFT, MID POWER TAKE-OFF
26	1-2755	SHIM, .030"
27	1-2752	SHIM, .015"
28	1-9572	BEARING, BALL
29	4-9595	PULLEY, P.T.O.
30	1-9835	GUARD, BELT
31	9-0587	BOLT, 3/8C x 1 HEX FLANGE
32	9-0122	WASHER, 3/8 FLAT
33	9-0613	NUT, 3/8C HEX FLANGE

REAR POWER TAKE-OFF



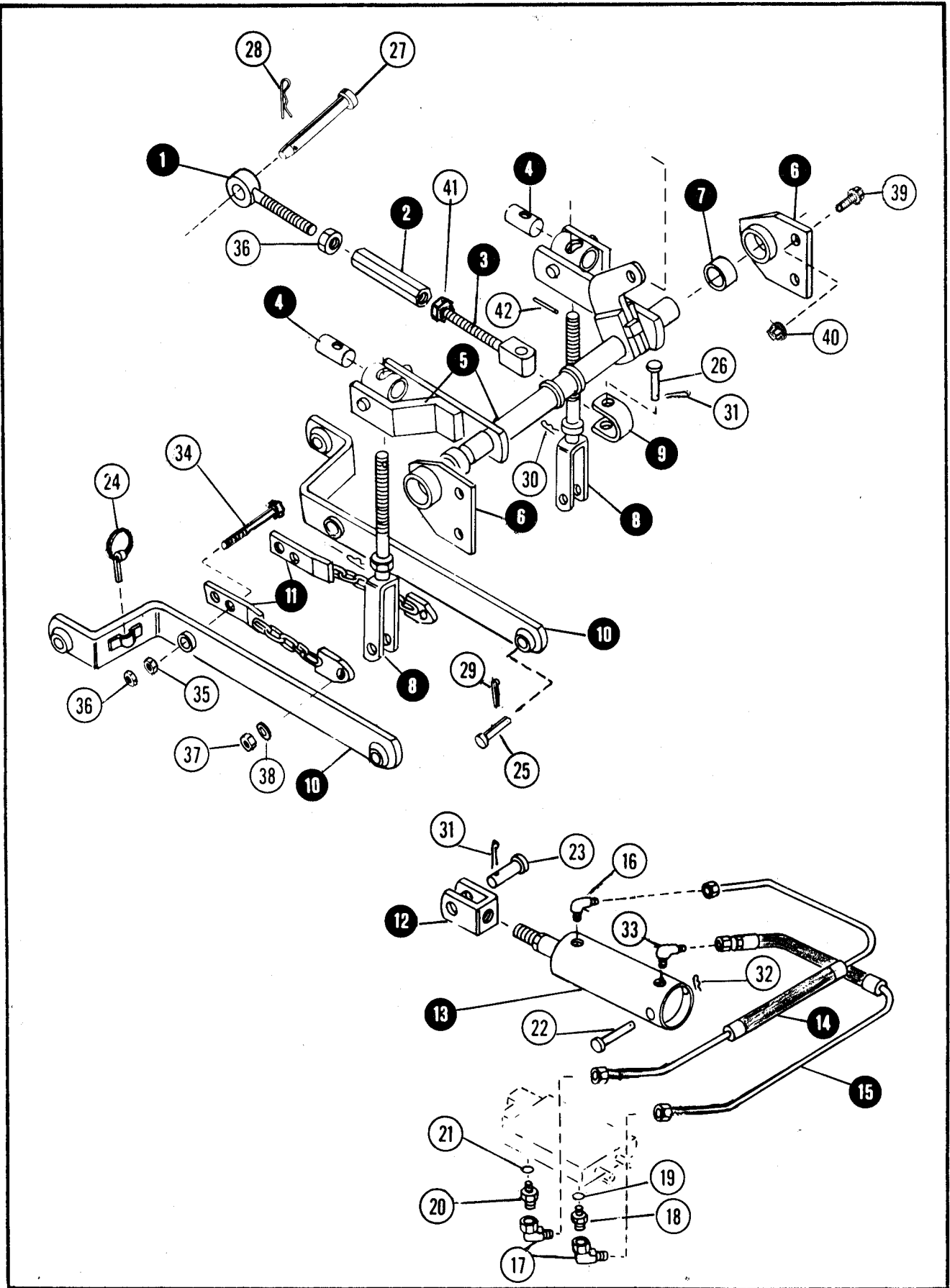
1855A SERIES

7.3

REAR POWER TAKE-OFF

ITEM	PART NO.	DESCRIPTION
1	4-9850	COVER, REAR P.T.O.
2	1-8360	KNOB, REAR P.T.O. LEVER
3	1-9577	LEVER, P.T.O. CONTROL
4	1-2668	INTERLOCK, REAR P.T.O. - ASSEMBLY
5	3-7867	BRACKET, INTERLOCK MOUNTING
6	4-9610	BRACKET, CONTROL LEVER
7	4-7754	ARM, IDLER
8	1-8326	PULLEY P.T.O. IDLER
9	3-9675	GUIDE, V-BELT
10	4-9590	PULLEY, P.T.O. DRIVE
11	1-2855	SHIM, .632 I D. x .020"
12	1-9607	V-BELTS (MATCHED SET)
13	1-9886	PULLEY, REAR P.T.O.
14	1-2856	RING, PULLEY RETAINING
15	1-8361	SPRING SLIDING RETAINING
16	1-2854	BALL, LOCK COLLAR BEARINGS (3/8 DIA.)
17	1-9609	COLLAR, P.T.O. SHAFT LOCK
18	1-8362	RING, LOCK COLLAR RETAINING
19	5-9546	PLATE, P.T.O. MOUNTING ASSEMBLY (INCLUDES TWO ITEM 20)
20	1-2746	BUSHING MOUNTING PLATE
21	1-9608	BEARING, DRIVE SHAFT
22	4-9654	SHAFT, REAR P.T.O. DRIVE
23	2-7502	COUPLING, P.T.O. DRIVE SHAFT
24	1-2857	BEARING, P.T.O. PULLEY
25	2-7573	SPACER, BEARING
26	1-9610	RING, BEARING RETAINING
27	2-7574	SPACER, P.T.O. SHAFT
28	1-2899	RING, SHAFT RETAINING
29	9-0589	COTTER-PIN, 1/4 x 1-1/2"
30	9-0680	BOLT, 1/2C x 3/4 HEX FLANGE
31	9-0607	BOLT, 5/16C x 1/8 HEX FLANGE
32	1-2744	RING, RETAINING
33	9-0122	WASHER, 3/8 FLAT
34	9-0613	NUT, 3/8C HEX FLANGE
35	2-1805	SPACER, CONTROL LEVER BRACKET
36	9-0585	NUT, 5/16C HEX FLANGE LOCK
37	9-0612	BOLT, 3/8C x 3/4 HEX FLANGE
38	9-0584	BOLT, 1/4C x 1/2 HEX FLANGE LOCK
39	9-0583	NUT, 1/4C HEX FLANGE LOCK

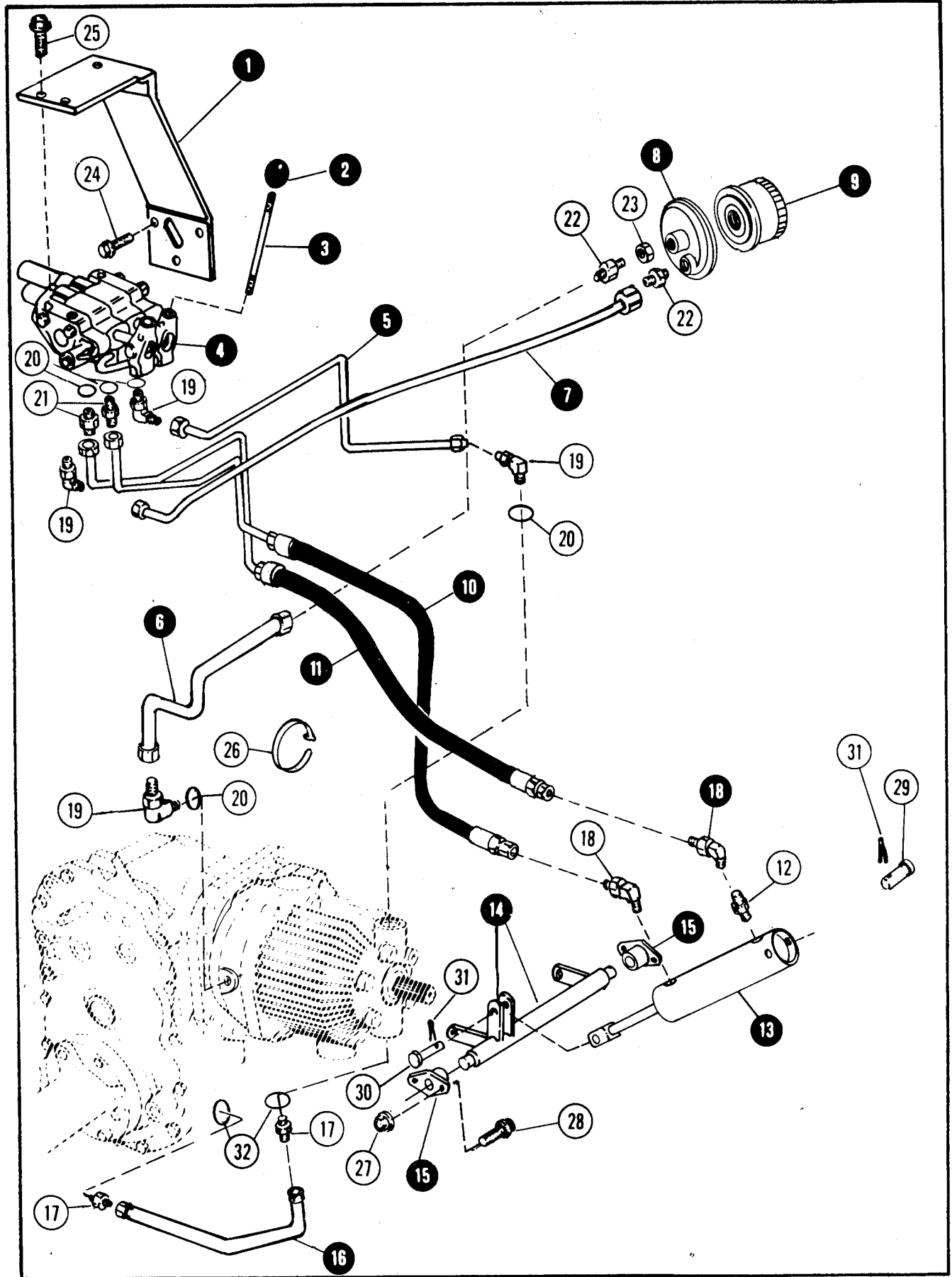
3-POINT HITCH



3-POINT HITCH

ITEM	PART NO.	DESCRIPTION
1	4-9616	CLEVIS, LINK ADJUSTER
2	2-7576	ADJUSTER, UPPER LINK
3	4-9615	CLEVIS, UPPER
4	2-7575	SWIVEL, LOWER LINK
5	4-9840	ROCKER - SHAFT, (ASSEMBLY)
6	5-7257	PIVOT, ROCKERSHAFT (ASSEMBLY INCLUDES ITEM 7)
7	1-2868	BUSHING, PIVOT
8	4-9609	LINK, LOWER ADJUSTER
9	3-7866	STRAP, CLEVIS TO SHAFT
10	4-9852	LINK, LOWER LIFT
11	4-9608	CHAIN, CHECK (ASSEMBLY)
12	2-7583	END, CYLINDER ROD
13	1-9611	CYLINDER, HYDRAULIC LIFT (see pages 7.11 - 7.12 for parts)
14	1-9891	TUBE & HOSE ASSEMBLY - VALVE TO CYLINDER
15	1-9890	TUBE & HOSE ASSEMBLY - VALVE TO CYLINDER
16	1-2754	ELBOW, 1/4-18
17	1-8365	ELBOW, 90 DEGREE SWIVEL
18	1-2773	CONNECTOR, ELBOW TO VALVE (INCLUDES ITEM 19)
19	1-3906	O-RING, 906 (.08 x .47 I.D.)
20	1-2869	CONNECTOR (INCLUDES ITEM 21)
21	1-3907	O-RING, 908 (.09 x .64 I.D.)
22	1-2866	PIN, CLEVIS - CYLINDER TO FRAME
23	1-2859	PIN, CLEVIS - LINK TO FRAME
24	1-2864	PIN,
25	1-2861	PIN, CLEVIS - LINK TO FRAME
26	1-2860	PIN, CLEVIS - CLEVIS TO SHAFT
27	1-3774	PIN, CLEVIS - 5/8 x 3"
28	1-3844	PIN, HAIR
29	9-0649	COTTER-PIN, 3/16 x 1-1/4
30	1-2863	PIN, HAIR - CLEVIS TO SHAFT
31	9-0364	COTTER-PIN, 5/32 x 1
32	1-2867	PIN, HAIR - CYLINDER to FRAME
33	1-8364	ELBOW, 1/4-18 Extra Long
34	9-0684	BOLT, 5/8C x 3-1/2 HEX HEAD
35	9-0537	NUT, 5/8C HEX
36	9-0686	NUT, 5/8C HALF HEX
37	9-0546	NUT, 3/8C HEX LOCK
38	9-0122	WASHER, 3/8 FLAT
39	9-0622	BOLT, 1/2C x 1-1/4 HEX WASHER HEAD
40	9-0619	NUT, 1/2C HEX FLANGE
41	9-0685	JAM-NUT, 5/8C LEFT HAND THREAD
42	1-2862	PIN, 1/4 x 2-1/2 GROOVE

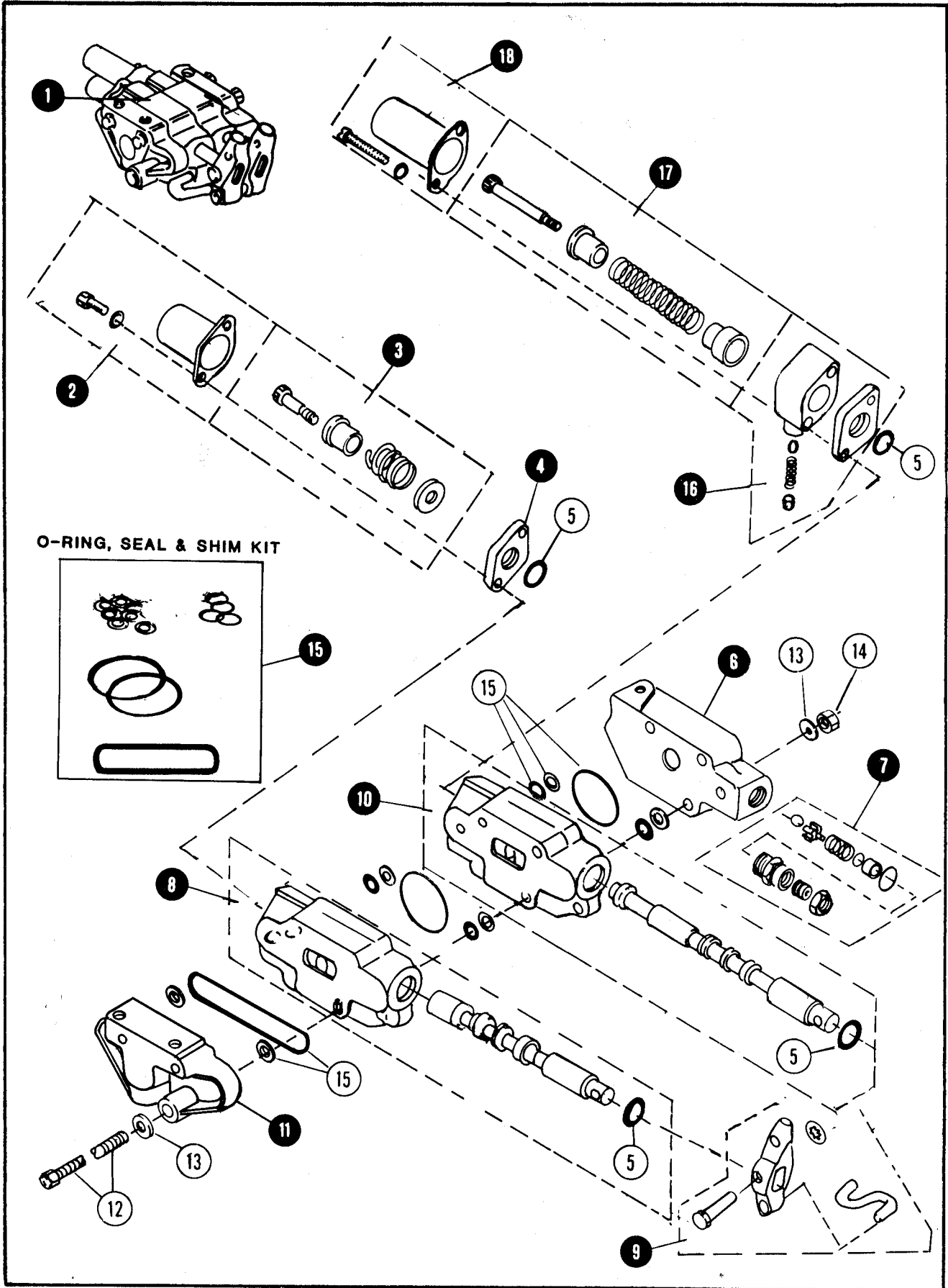
HYDRAULIC LIFT SYSTEM (MID-MOUNT)



HYDRAULIC LIFT SYSTEM (MID-MOUNT)

ITEM	PART NO.	DESCRIPTION
1	4-9839	BRACKET, VALVE SUPPORT
2	1-8271	KNOB, CONTROL HANDLE
3	2-7525	HANDLE, VALVE CONTROL
4	1-9870	VALVE, 2-SPOOL (see pages 7.9 - 7.10 for parts)
5	1-9650	TUBE, CHARGE PUMP TO VALVE
6	1-9647	TUBE, FILTER TO TRANSMISSION
7	1-9648	TUBE, VALVE TO FILTER
8	1-8335	BASE, OIL FILTER
9	1-8334	FILTER, HYDRAULIC OIL
10	1-9847	HOSE-TUBE, VALVE TO CYLINDER - ROD END
11	1-9848	HOSE-TUBE, VALVE TO CYLINDER - HEAD END
12	1-2753	CONNECTOR, 1/4P.T. x 9/16-18 STRAIGHT THREAD
13	1-9565	CYLINDER, MID-MOUNT LIFT (see pages 7.13 - 7.14 for parts)
14	4-9832	SHAFT, LIFT
15	1-8277	BEARING, LIFT SHAFT
16	1-9866	TUBE, TRANSAXLE TO TRANSMISSION
17	1-2767	CONNECTOR, 7/8-14 STRAIGHT THREAD
18	1-2754	ELBOW, 90 DEGREE 1/4P.T. x 9/16-18 STRAIGHT THREAD
19	1-2764	ELBOW, 90 DEGREE 9/16-18 STRAIGHT HEAD
20	1-3906	O-RING, 906(.08 x .47 I.D.)
21	1-2773	CONNECTOR, 9/16-18 STRAIGHT THREAD
22	1-2753	CONNECTOR
23	9-0283	NUT, 3/4 HALF HEX
24	9-0620	BOLT, 3/8C x 7/8 HEX FLANGE LOCK
25	9-0661	BOLT, 5/16C x 1 HEX FLANGE LOCK
26	1-2660	STRAP, HOSE RETAINER
27	9-0613	NUT, 3/8C x 1 HEX FLANGE LOCK
28	9-0582	BOLT, 3/8C x 1 HEX FLANGE LOCK
29	1-2756	CLEVIS-PIN, 1/2 x 3-7/16
30	1-2751	CLEVIS-PIN, 1/2 x 1-7/8
31	9-0041	COTTER-PIN, 1/8 x 1"
32	1-3908	O-RING, 910 (.10 x .75 I.D.)

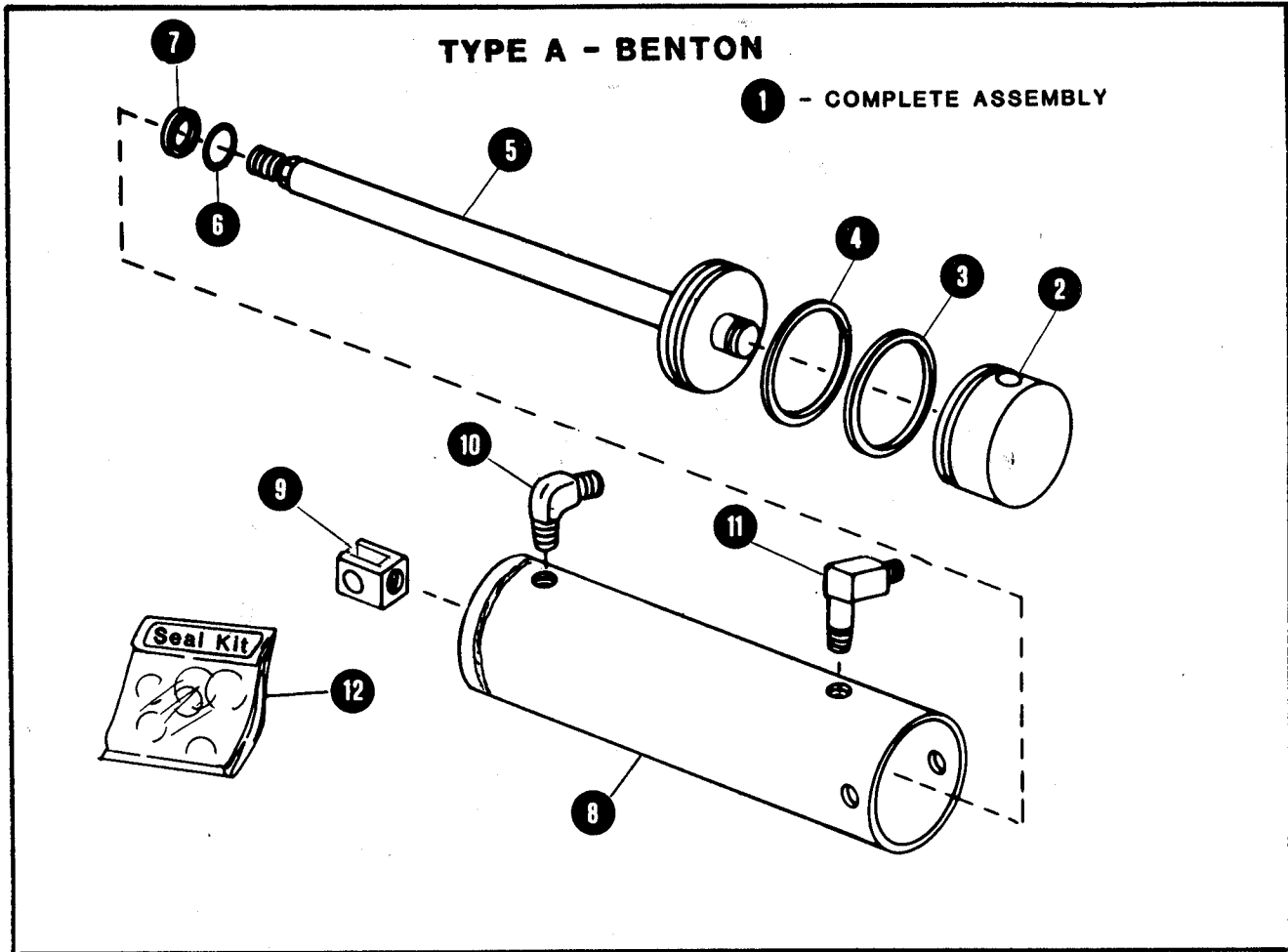
HYDRAULIC VALVE - 2 SPOOL



HYDRAULIC VALVE - 2 SPOOL

ITEM	PART NO.	DESCRIPTION
1	1-9870	VALVE ASSEMBLY, 2 SPOOL (COMPLETE LESS HANDLES)
2	6-0427	KIT, SPOOL CAP REPLACEMENT
3	6-0426	KIT, SPOOL SPRING REPAIR
4	1-3747	SPACER, SPOOL
5	1-3001	O-RING (NOT PART OF ITEM 15 KIT - ORDER SEPARATELY)
6	1-2962	COVER ASSEMBLY (INCLUDES SEAT)
7	1-2984	KIT, RELIEF VALVE REPAIR
8	1-3746	KIT, AUXILIARY VALVE REPLACEMENT
9	1-3749	KIT, HANDLE CONTROL REPAIR
10	1-3745	KIT, MID/FRONT LIFT VALVE REPLACEMENT
11	1-3750	COVER
12	9-0772	BOLT, 1/4 NF x 4-3/4 HEX HEAD (3)
13	9-0055	WASHER, FLAT (6)
14	9-0095	NUT, 1/4 NF HEX (3)
15	6-0428	KIT, SEAL & SHIM REPAIR (LESS ITEM 5)
16	6-0423	KIT DETENT REPAIR
17	6-0424	KIT, DETENT SPOOL SPRING REPAIR
18	6-0425	KIT, SPOOL CAP REPLACEMENT

HYDRAULIC CYLINDER - REAR LIFT

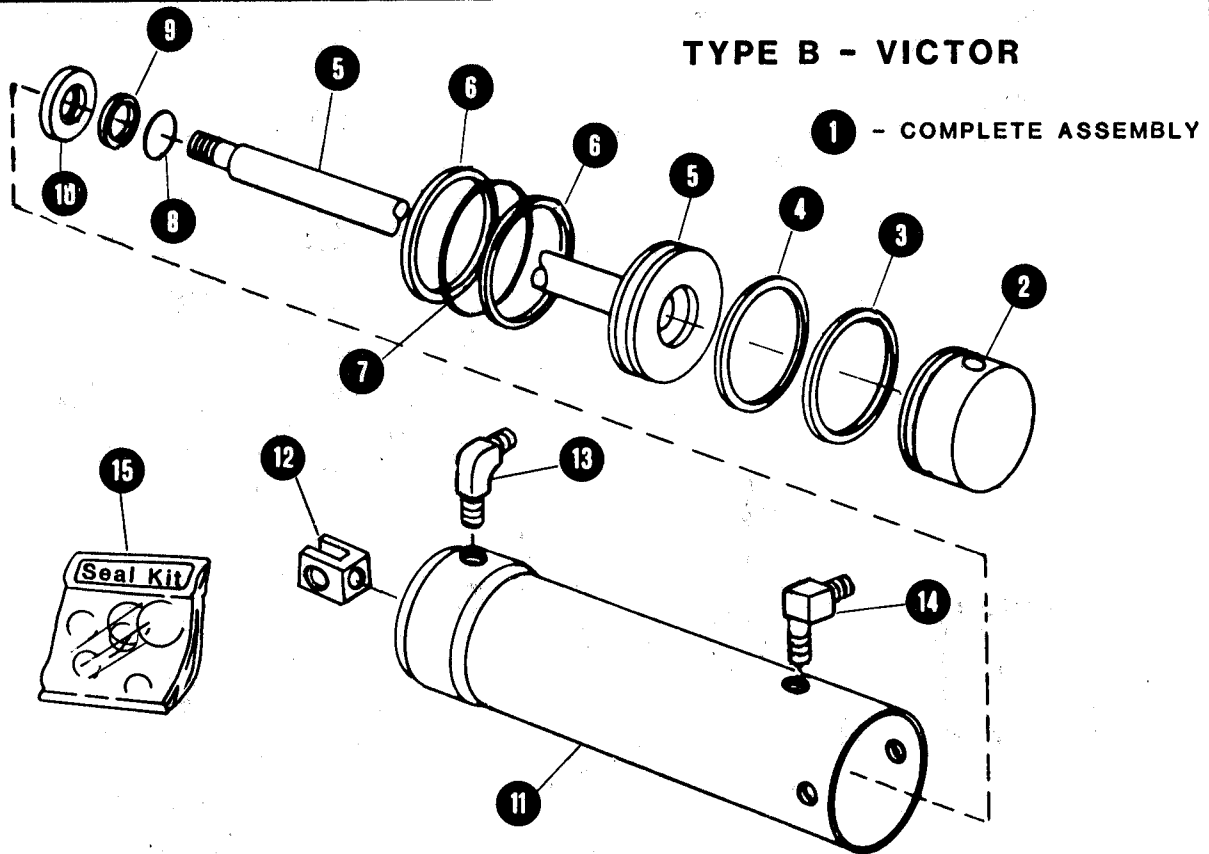


ITEM	PART NO.	DESCRIPTION
1	1-9611	CYLINDER, REAR LIFT ASSEMBLY (INCLUDES ITEMS 2 THRU 8)
2	1-3835	HEAD, CYLINDER
3	***	PACKING, CYLINDER HEAD
4	***	SEAL, PISTON
5	1-3832	PISTON-ROD ASSEMBLY
6	***	O-RING, PISTON ROD
7	***	RING, PISTON ROD BACK-UP
8	1-3053	TUBE, CYLINDER
9	2-7583	FITTING, PISTON ROD END
10	1-2754	ELBOW, 1/4-18 NPTF x 9/16-18 NF - 90°
11	1-8364	ELBOW, 1/4-18 NPTF x 9/16-18 - 90°(LONG)
12	1-3915	KIT, SEAL REPLACEMENT (INCLUDES ITEMS 3,4,6,7)

*** PART OF SEAL KIT ITEM 12.

HYDRAULIC CYLINDER - REAR LIFT

TYPE B - VICTOR

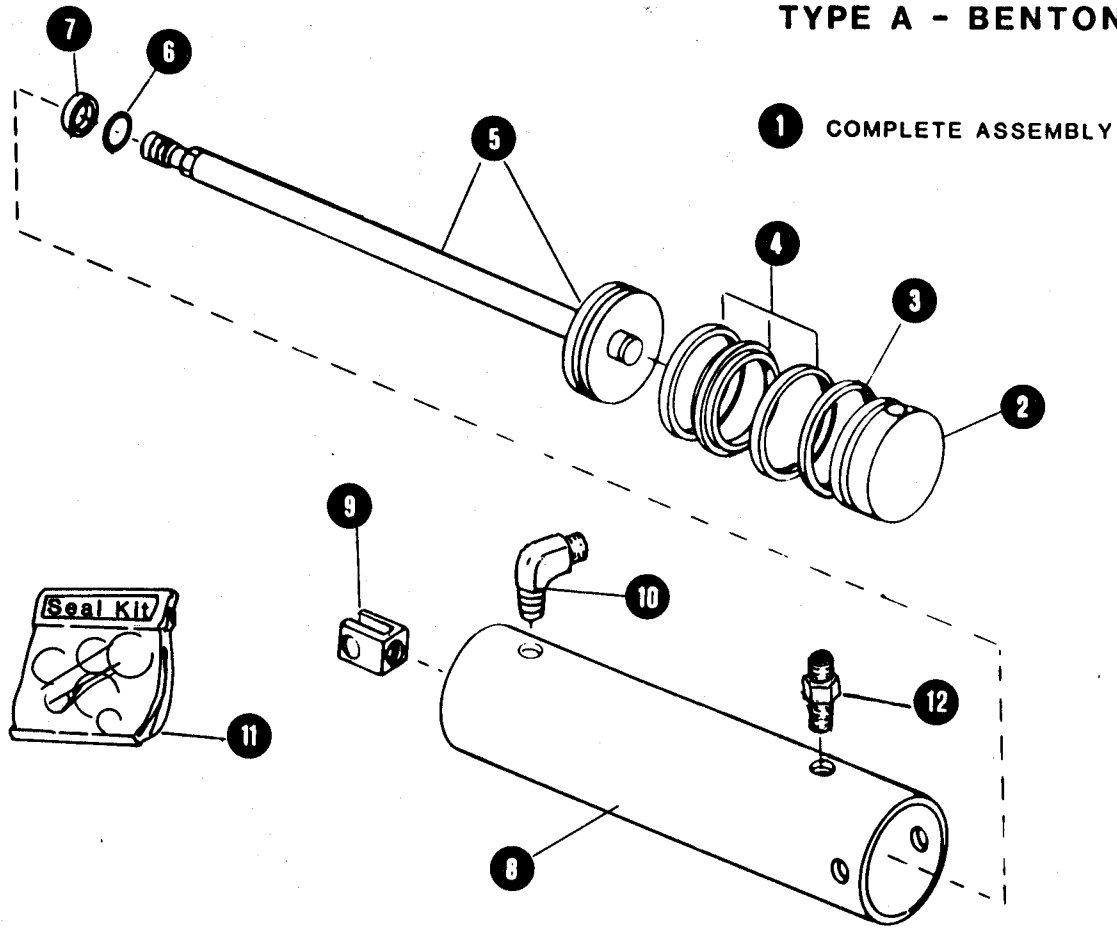


ITEM	PART NO.	DESCRIPTION
1	1-9611	CYLINDER, REAR LIFT ASSEMBLY (INCLUDES ITEMS 2 THRU 11)
2	1-2979	HEAD, CYLINDER
3	***	WASHER, HEAD O-RING BACK-UP
4	***	O-RING, CYLINDER HEAD
5	1-3839	PISTON-ROD ASSEMBLY
6	***	WASHER, PISTON O-RING BACK-UP
7	***	O-RING, PISTON
8	***	O-RING, PISTON ROD SEAL
9	***	WASHER, SEAL O-RING BACK-UP
10	***	WIPER, PISTON ROD
11	1-2980	TUBE CYLINDER
12	2-7583	FITTING, PISTON ROD END
13	1-2754	ELBOW, 1/4-18 NPTF x 9/16-18 NF - 90°
14	1-8364	ELBOW, 1/4-18 NPTF x 9/16-18 NF - 90° (LONG)
15	1-3914	KIT, SEAL REPLACEMENT (INCLUDES ITEMS 3, 4, 6, 7, 8, 9, 10)

*** PART OF SEAL KIT ITEM 15

HYDRAULIC CYLINDER - MID/MOUNT LIFT

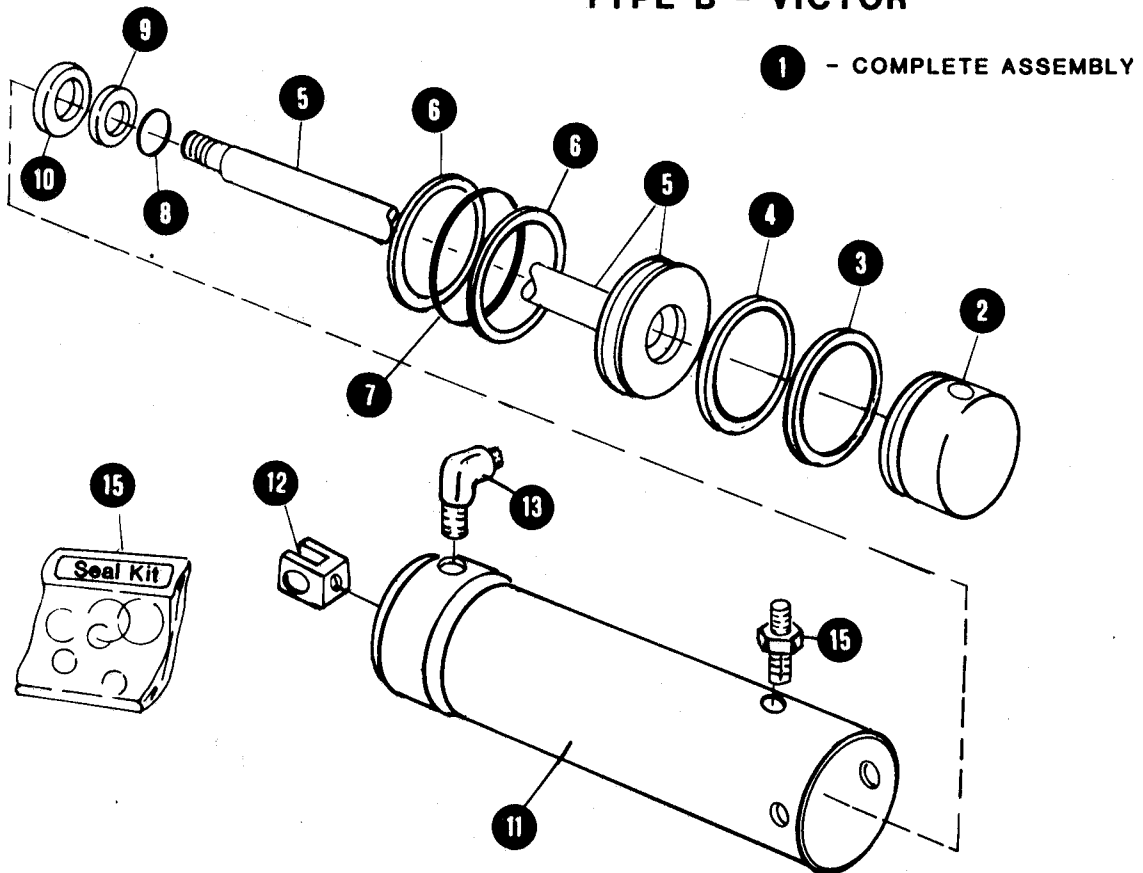
TYPE A - BENTON



ITEM	PART NO.	DESCRIPTION
1	1-9565	CYLINDER MID-MOUNT LIFT ASSEMBLY (INCL. ITEMS 2 thru 9)
2	1-3045	HEAD, CYLINDER
3	***	PACKING, CYLINDER HEAD
4	***	SEAL-RING ASSEMBLY, PISTON BACK-UP
5	1-3840	PISTON-ROD ASSEMBLY
6	***	O-RING PISTON ROD
7	***	SEAL, PISTON
8	1-3044	TUBE, CYLINDER
9	2-7583	FITTING, PISTON ROD END
10	1-2754	ELBOW, 1/4P.T. - 90 Degree
11	1-3913	KIT, SEAL REPLACEMENT (INCLUDES ITEMS 3,4,6,7)
12	1-2753	FITTING, CONNECTOR 1/4P.T. x 9/16-18 STRAIGHT THREAD
		*** PART OF SEAL KIT ITEM 11

HYDRAULIC CYLINDER, MID-MOUNT

TYPE B - VICTOR



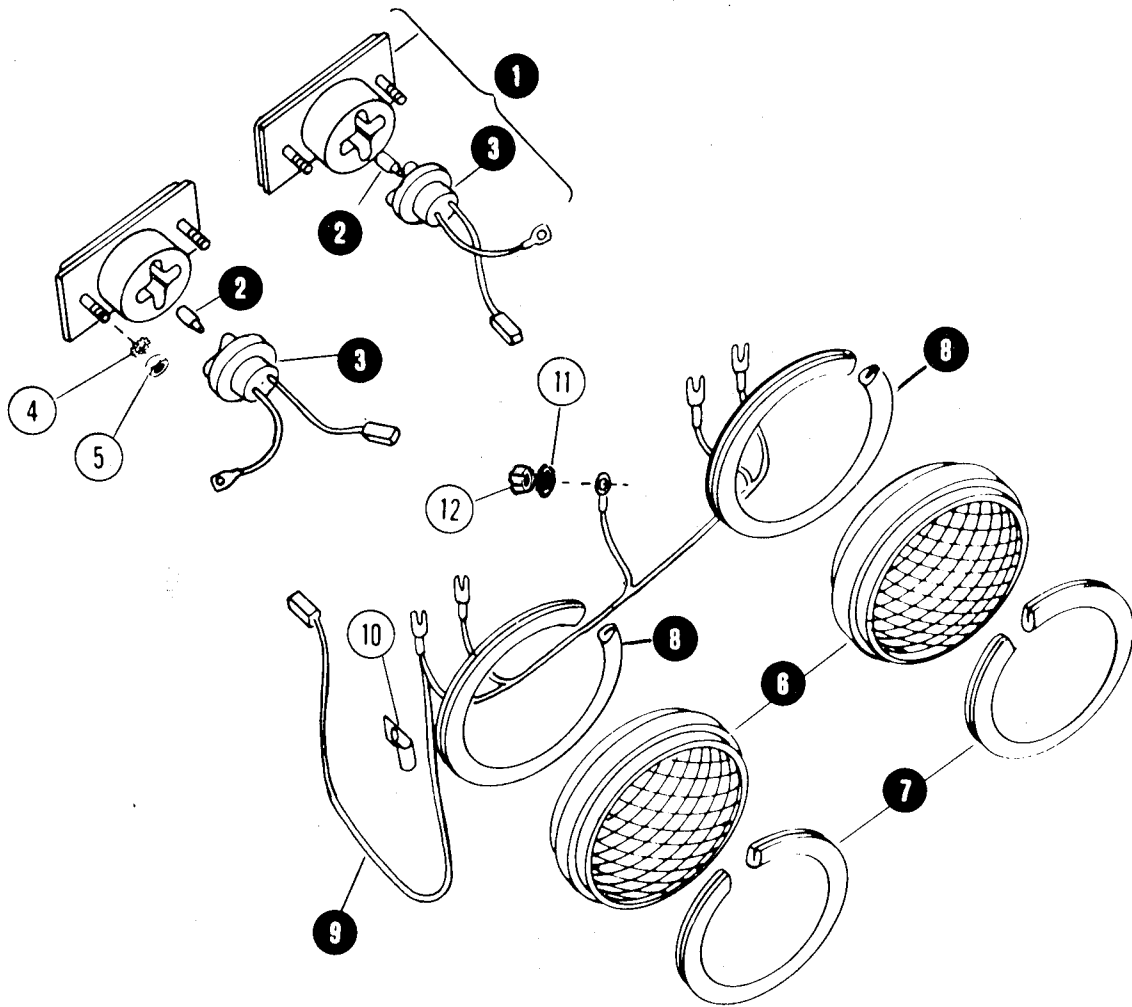
ITEM	PART NO.	DESCRIPTION
1	1-9565	CYLINDER, REAR LIFT ASSEMBLY (INCLUDES ITEMS 2 THRU 12)
2	1-2909	HEAD, CYLINDER
3	***	WASHER, HEAD O-RING BACK-UP
4	***	O-RING, CYLINDER HEAD
5	1-2910	PISTON-ROD ASSEMBLY
6	***	WASHER, PISTON O-RING BACK-UP
7	***	O-RING, PISTON
8	***	O-RING, PISTON ROD SEAL
9	***	WASHER, SEAL O-RING BACK-UP
10	***	WIPER, PISTON ROD
11	1-3911	TUBE CYLINDER
12	1-3836	FITTING, PISTON ROD END
13	1-2754	ELBOW, 1/4 P.T. 90°
14	1-3912	KIT, SEAL REPLACEMENT (INCLUD ES ITEMS 3,4,6,7,8,9,10)
15	1-2753	FITTING, CONNECTOR 1/4 P.T. x 9/16-18 STRAIGHT THREAD

***PART OF SEAL KIT ITEM 14

ELECTRICAL SYSTEM

ITEM	PART NO.	DESCRIPTION
1	1-9844	BATTERY, 12 VOLT, 52 AMP HOUR
2	1-8302	PAD, BATTERY
3	3-9621	CLAMP, BATTERY HOLD DOWN
4	1-2740	ROD, HOLD DOWN
5	1-8306	CABLE, BATTERY - NEGATIVE TO GROUND
6	1-9561	CABLE, BATTERY POSITIVE - TO SOLENOID
7	1-9562	RECTIFIER - REGULATOR
8	1-9924	HARNESS, MAIN WIRING
9	1-8304	CABLE, SOLENOID TO STARTER
10	1-8265	WIRE, CIRCUIT BREAKER TO AMMETER
11	1-8262	WIRE, SOLENOID TO CIRCUIT BREAKER
12	1-9543	SWITCH, IGNITION (INCLUDES ITEMS 13, 35 & 36)
13	1-2692	KEY, IGNITION SWITCH (PAIR)
14	1-2668	SWITCH, INTERLOCK (INCLUDES MOUNTING HARDWARE)
15	1-9545	SWITCH, TOGGLE
16	1-9547	AMMETER ASSEMBLY (INCLUDES MTG BRACKET & HARDWARE)
17	1-8263	BREAKER, CIRCUIT (INCLUDES TERMINAL NUTS, ETC.)
18	1-9544	SOLENOID, STARTING
19	1-2690	STRAP, WIRE RETAINING
20	1-8270	CLIP, WIRING
21	1-2691	CLIP, WIRING
22	1-9560	CLIP, WIRING
23	9-0372	NUT, 1/4C HEX LOCK
24	9-0598	WASHER 1/4 FLAT
25	9-0596	BOLT 1/4C x 5/8 HEX FLANGE LOCK
26	9-0608	WASHER, 1/4 EXTERNAL TOOTH LOCK
27	9-0583	NUT, 1/4C HEX FLANGE LOCK
28	9-0372	NUT, 1/4C HEX LOCK
29	9-0063	NUT, 1/4C HEX
30	1-2737	WASHER, 1/4 INTERNAL LOCK
31	9-0196	NUT, 5/16C HEX
32	9-0187	WASHER, 5/16 LOCK
33	9-0013	NUT, # 10-32 HEX
34	9-0601	WASHER, #10 LOCK
35	1-2685	NUT, SWITCH MOUNTING (INCLUDED WITH ITEM 12)
36	9-0183	WASHER, 5/8 FLAT (INCLUDED WITH ITEM 12)
37	1-2686	NUT, 1/2-27 HEX-SPECIAL
38	9-0610	SCREW, #10-24 x 1/2 PAN HEAD
39	1-2688	NUT, #10-24 FLANGE LOCK
40	9-0010	WASHER, #10 FLAT

LIGHTING SYSTEM



ITEM	PART NO.	DESCRIPTION
1	1-8245	TAIL, LIGHT ASSY. (INCLUDES ITEMS 2 & 3)
2	1-3721	BULB, TAIL LIGHT
3	1-3043	SOCKET, TAIL LIGHT TERMINAL
4	9-0601	WASHER, #10 EXTERNAL TOOTH LOCK
5	9-0013	NUT, #10-32
6	1-8415	HEADLAMP, SEALED BEAM
7	1-2651	MOLDING, OUTSIDE HEADLAMP
8	1-2650	MOLDING, INSIDE HEADLAMP
9	1-9529	HARNES, HEADLAMP WRING
10	1-2652	CLIP, HARNES TO HOOD (2 rea'd)
11	9-0055	WASHER, 1/4 FLAT
12	9-0578	NUT, 1/4C HEX LOCK

ACCESSORY INDEX (1855A SERIES)

KIT DESCRIPTION	PAGE
HOUR METER	9.1
AG TIRES	9.2
REAR WHEEL WEIGHTS	9.3
REAR TIRE CHAINS	9.3
SPARK ARRESTOR	9.4
REAR P.T.O. SHIELD	9.4

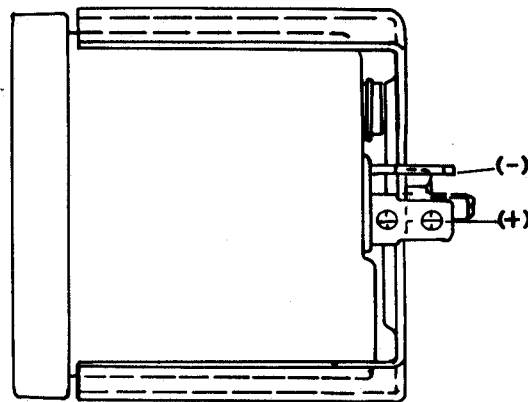
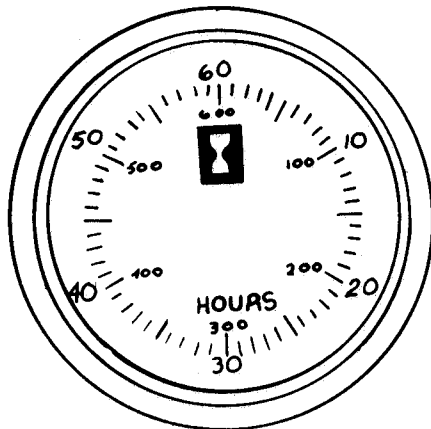
ATTACHMENT INDEX (SEPARATE PARTS SECTIONS)

MOWERS	MANUAL	# 1-3711
SNOW THROWERS	//	# 1-3899
ROTARY TILLERS	//	# 1-3920
GARDEN TOOLS	//	# 1-3921
DOZER BLADES	//	# 1-3922
DUMP CARTS	//	# 1-3923

HOUR METER

KIT #6-0394

INCLUDES MOUNTING BRACKET & HARDWARE

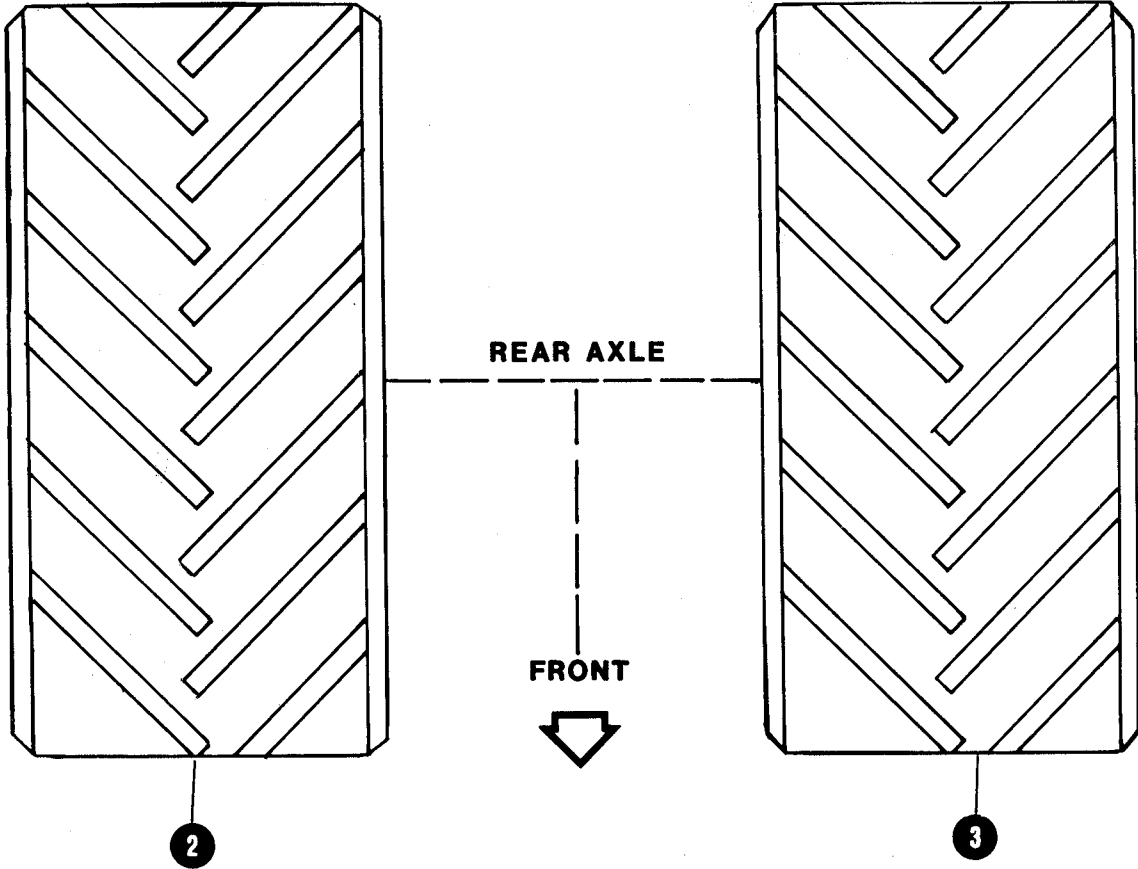


NOTE: TRACTORS WIRED TO RECEIVE HOUR METER

AG WHEELS & TIRES

ACCESSORY

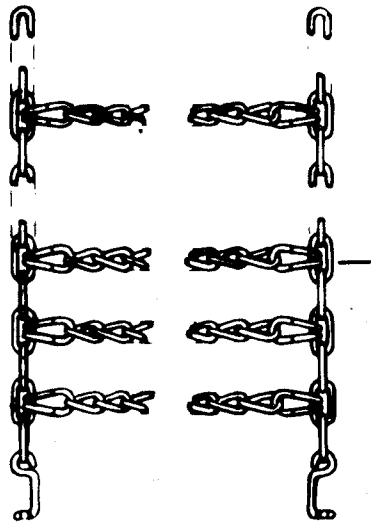
1 KIT, COMPLETE



ITEM	PART NO.	DESCRIPTION
1	6-0460	KIT, AG REAR TIRE (INCLUDES FOLLOWING)
2	5-9818	WHEEL & TIRE ASSEMBLY - RIGHT SIDE
	1-9671	TIRE, 26 x 12-12 TUBELESS
	1-9682	RIM
	1-2234	VALVE
3	5-9817	WHEEL & TIRE ASSEMBLY - LEFT SIDE
	1-9671	TIRE, 26 x 12-12 TUBELESS
	1-9682	RIM
	1-2234	VALVE

ACCESSORY

TIRE CHAINS



KIT #6-0386

**for 26 x 12 x 12
REAR WHEELS**

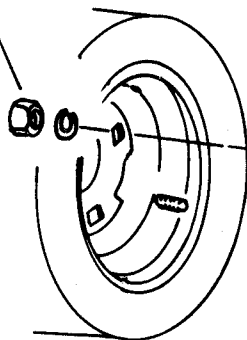
(INCLUDES TWO CHAINS)

ACCESSORY

REAR WHEEL WEIGHTS

KIT #6-0452

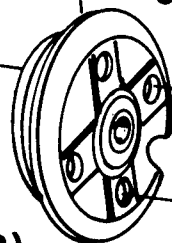
9-0258 NUT (6)



6-0452 WEIGHT (ORDER KIT)

**9-0254 SPLIT LOCK
WASHER (4)**

**1-3845 ROD (2)
(1/2-13 x 8)**

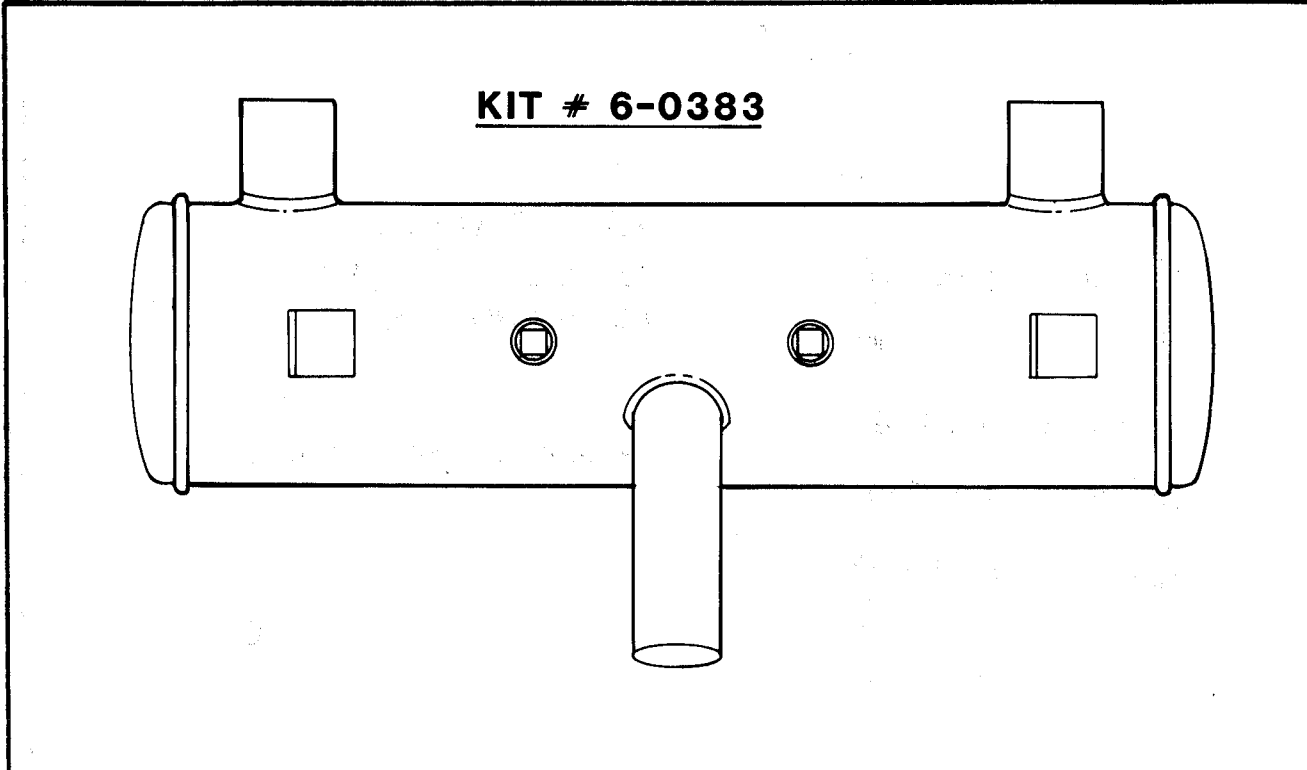


**9-0250 FLAT
WASHER (2)**

NOTE: ONLY ONE WEIGHT PROVIDED IN EACH KIT-
ORDER TWO KITS FOR BOTH REAR WHEELS
OR FOUR KITS TO INSTALL TWO WEIGHTS PER WHEEL.

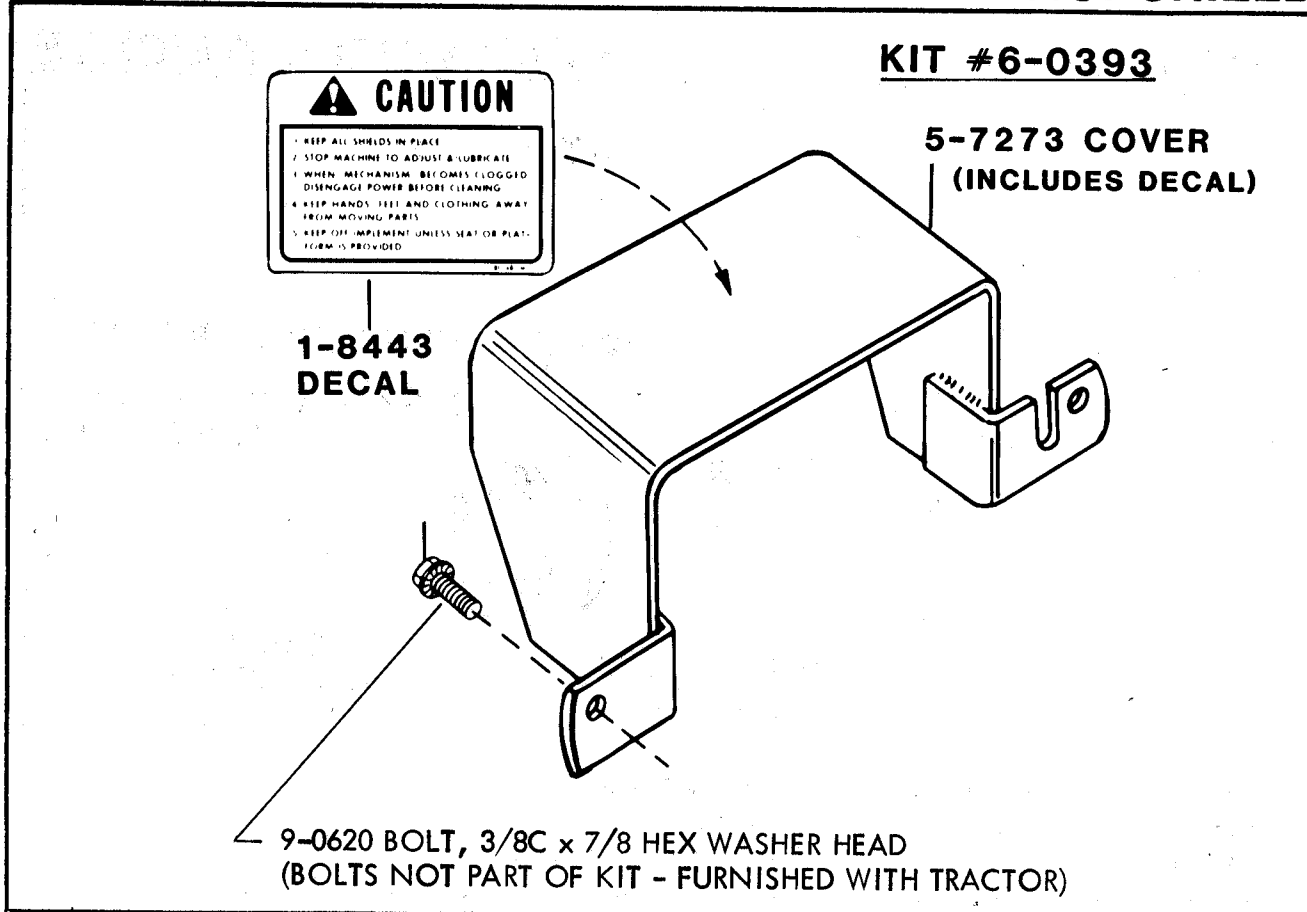
ACCESSORY

SPARK ARRESTOR MUFFLER



ACCESSORY

REAR P.T.O. SHIELD



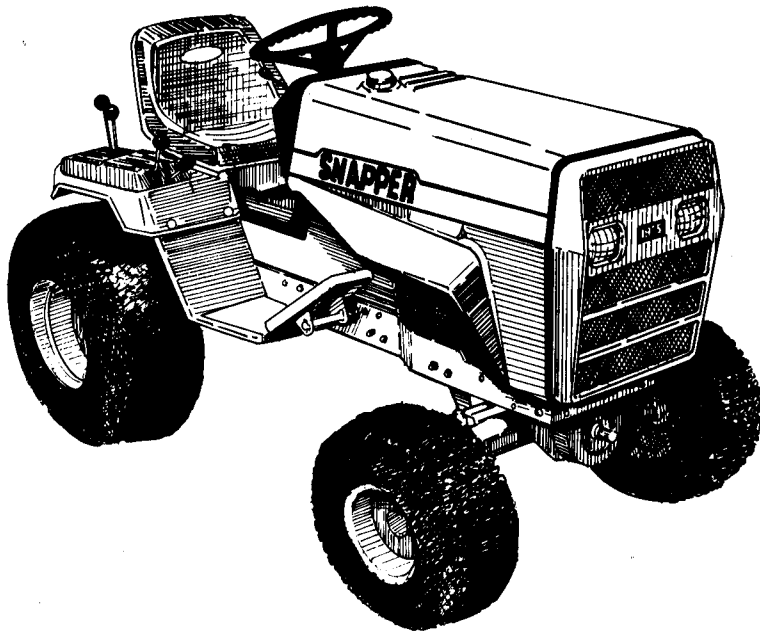


SNAPPER®

1855A SERIES

TRACTOR & ACCESSORIES

PARTS MANUAL



SNAPPER® McDonough, GA., 30253 U.S.A.

1-3710

MANUAL #06035 (1/80 ISSUE)

PRINTED IN U.S.A.