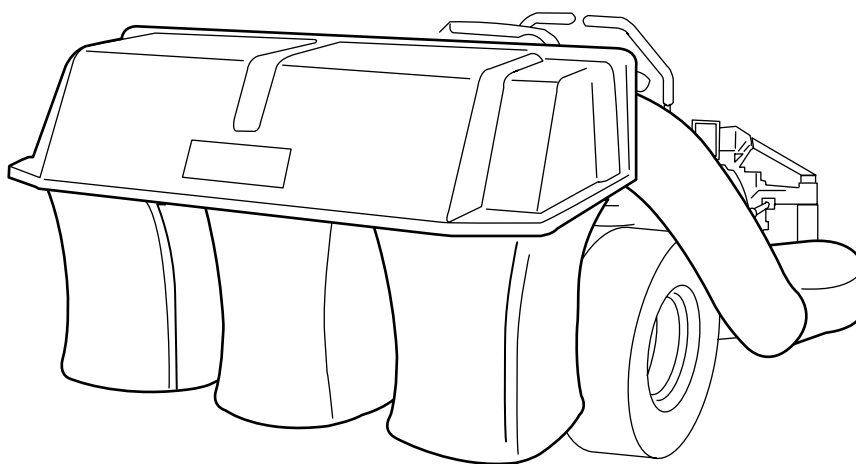




ATTACHMENT OPERATOR'S MANUAL



Clean Sweep Triple Catcher

Clean Sweep Triple Catcher

Mfg. No.	Description
1694499	Clean Sweep Triple Catcher

1726794
Rev. 00
Rev. Date 02/2004
TP 100-4032-00-AT-SN

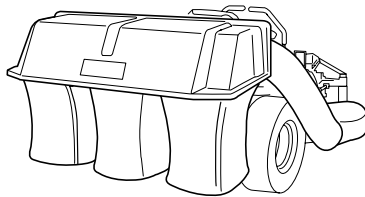


Table of Contents

Safety Rules & Information

General Warnings.....	2
Safety Decals	2

General Operating Information

Mowing with the Triple Catcher.....	3
Required Accessories.....	3
After Operation	3

Initial Turbo Installation -

Contents Turbo Installation Group	4
Install Turbo	5

Initial Counter Balance & Front Weight Carrier Installation -

Counter Balance Installation	10
Install Front Weight Carrier.....	10

Initial Hitch & Tube Installation -

Install Hitch Plate & Back Plate	11
Install Tubes & Deflector.....	11

Initial Collector Assembly

Assemble Catcher Bags	13
Install Cover.....	13

Removing & Re-attaching the Triple Catcher

Removing the Grass Catcher	14
Reattaching the Grass Catcher	15


Hardware Identification

& Torque Specifications.....16

NOTE: In these instructions, “left” and “right” are referred to as seen from the operating position.

Safety Rules & Information



Read these safety rules and follow them closely. Failure to obey these rules could result in loss of control of unit, severe personal injury or death to you, or bystanders, or damage to property or equipment. The triangle  in text signifies important cautions or warnings which must be followed.

GENERAL WARNINGS

- Know the unit's controls and how to stop quickly. **READ THE OPERATOR'S MANUALS.**
- Read and obey all safety decals.
- Only allow responsible adults, who are familiar with the instructions, to operate the unit.
- Disengage the PTO. Shut off the engine and wait for all moving parts to stop before attaching, adjusting, or disconnecting any part of the collection system.
- Check the collection system to make sure it is bolted tightly to the unit.
- DO NOT operate the unit without either the entire grass catcher or the deflector in place.
- Turn off the PTO to disengage the blades when not mowing.
- DO NOT mow in reverse. Always look down and behind before and while travelling in reverse.
- DO NOT turn sharply when travelling alongside a building or any object. Slow down before turning.
- DO NOT carry passengers.
- When collection system is removed from the mower deck, the deflector must be properly installed.
- Collector bags are subject to deterioration and wear during normal use. Inspect the bag periodically for tears, holes, or weak spots and replace with a new bag that meets manufacturer's durability standards.
- If the mower stalls or the collector chute plugs:
 1. Disengage the PTO;
 2. Stop the engine and remove the key;
 3. Set the parking brake, and wait for all moving parts to stop.
 4. Remove the foreign object or clear the chute with a piece of wood before restarting the engine. **NEVER place hands into COLLECTOR OR MOWER housing to clear jammed objects. Blower OR MOWER may rotate when object is removed.**
- For added stability and to prevent tipping or loss of control:
 - a. Use reduced speed on uneven ground and when turning corners.
 - b. Reduce loads on hillsides. It is recommended that the collection system be kept only half full when negotiating any slopes. Start mowing on slopes when the collection system is empty.
 - c. Mow up and down the face of slopes; never across the face of any slope.
- When operating on slopes, use front counterweights. **Never operate on slopes greater than 17.6% (10°).**

SAFETY DECALS

This unit has been designed and manufactured to provide you with the safety and reliability you would expect from an industry leader in outdoor power equipment manufacturing.

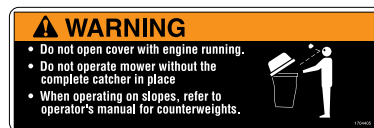
Although reading this manual and the safety instructions it contains will provide you with the necessary basic knowledge to operate this equipment safely and effectively, we have placed several safety labels on the unit to remind you of this important information while you are operating your unit.

All DANGER, WARNING, CAUTION and instructional messages on your rider, attachments and mower should be carefully read and obeyed. Personal bodily injury can result when these instructions are not followed. The information is for your safety and it is important! The safety decals below are on your product.

If any decals are lost or damaged, replace them at once. See your local dealer for replacements.

These labels are easily applied and will act as a constant visual reminder to you, and others who may use the equipment, to follow the safety instructions necessary for safe, effective operation.

ATTACHMENT DECALS



Decal - WARNING Do Not Open Cover
Part Number 1704405



Decal - WARNING
Part Number
1717291

Read and obey all operation and warning decals.



Operating Instructions



BEFORE OPERATION

Clear the lawn of all sticks, stones, wire and other debris which may be caught or thrown by the mower blades.

Check grass condition. If wet, wait until later in the day. If grass is wet, the grass catcher is likely to become plugged.

For efficient bagging, air circulation under the mower deck, through the chute and into the bag is very important.

For this reason, BEFORE YOU BEGIN MOWING you should make certain the underside of the mower and the underside of the catcher lid are free from grass and debris.

Make sure that there is a snug fit between mower deck, blower housing, tubes, and grass catcher cover.

MOWING WITH THE CATCHER

Always operate with throttle at full speed when mowing. Grass should be cut often, and not too short. If grass is too long or lush it may be necessary to keep ground speed to a minimum or to cut only half the width of the mower to prevent clogging. If grass is long, operate with mower in high cutting position for first pass, cutting again in a lower position on a second pass.

Do not open the cover with mower engaged.

If a large amount of cut grass is spilling out from under deck, the tube may be plugged or the bags may be full—discontinue mowing, stop the rider, disengage the PTO, shut off the engine and then empty the catcher or clear the tube.

WARNING

ALWAYS shut off the tractor. Disengage the PTO, and allow all moving parts to stop BEFORE disconnecting or clearing tube, or emptying catcher.

Before leaving the operator's position for any reason, engage the parking brake, disengage the PTO, stop the engine and remove the key.

To reduce fire hazard, keep the engine, rider and mower free of grass, leaves and excess grease. Do not stop or park rider over dry leaves, grass or combustible materials.

REQUIRED ACCESSORIES

A front-mounted factory approved weight carrier and 150 lbs. worth of weights are required when using this rear-mounted grass catcher. **Never operate on slopes greater than 17.6% (10°).**

AFTER OPERATION

Remove any debris from the the screen on the underside of the lid. *Note: The lid screen can be partially removed for easier cleaning and should be cleaned regularly.*

The blower housing and tube should be removed for cleaning.

Inspect the grass bags for wear or damage. Make sure that there is a snug fit between mower deck, blower housing, tubes, and grass catcher cover.

STORING THE GRASS CATCHER

Clean the grass catcher thoroughly using a mild detergent (other products may damage the tube). Remove any debris from the the screen on the underside of the lid.

If paint has been scratched on metal parts, touch up with paint, or apply a thin film of oil to prevent corrosion.

Store in a dry area. Dry thoroughly before storing for a long period of time. Always store away from moisture.

Initial Turbo Installation

Setup

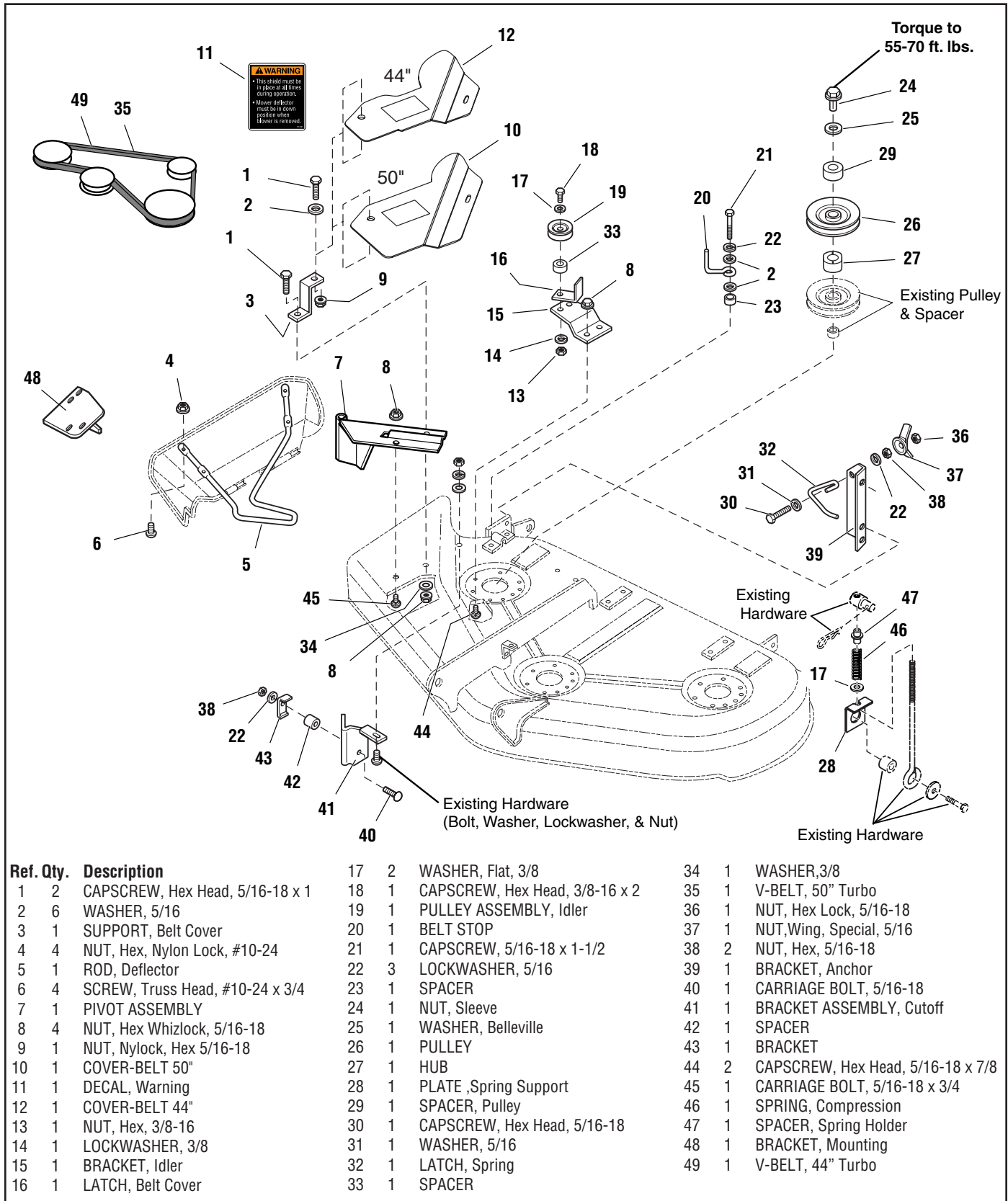


Figure 1. Contents of Turbo Installation Kit

TURBO INSTALLATION

Remove Mower Deck

Remove the mower deck from the unit (see Operator's Manual for instructions).

Deflector Removal

1. Remove and retain the carriage bolts, washers, lockwashers, and nuts (A, Figure 3) holding the deflector rod to the deck. Remove and discard the deflector rod. Retain the deflector.

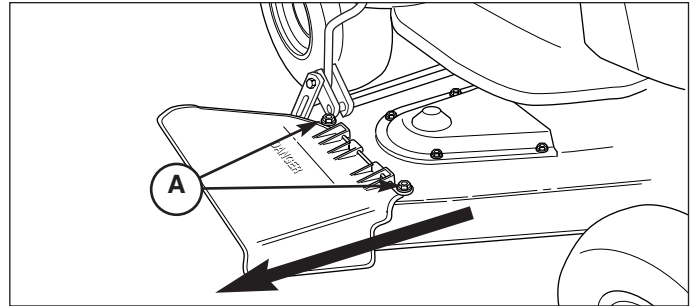


Figure 3. Remove Deflector
A. Carriage Bolts, Washers, Lockwashers, & Nuts

Install Discharge Baffle

1. Attach the baffle bracket (A, Figure 4) under the mower housing as shown, and insert the carriage bolt (from step 1) through the bracket & deck hole at (B).
2. Attach the "L" bracket (C) to the baffle (A), and over the stone guard (D). Attach with carriage bolt, spacer, lockwasher and nut as shown.

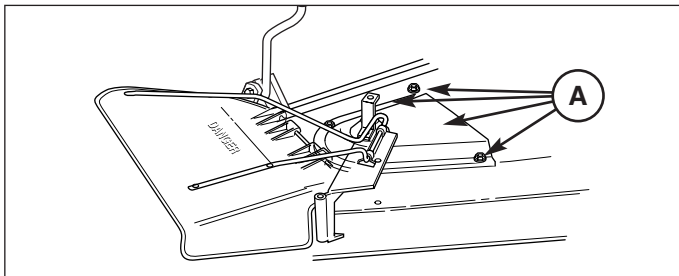


Figure 2. Install Discharge Baffle
A. Cover and Bolts

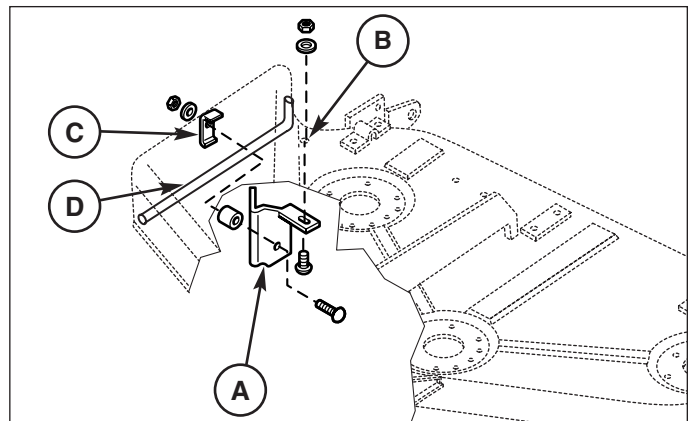


Figure 4. Install Discharge Baffle
A. Baffle Bracket
B. Mounting Hole
C. L-Bracket
D. Stone Guard

Install Deflector Hinge Assembly

1. Remove the bolts (A, Figure 2) securing the RH arbor cover, then remove the cover from the deck. Discard the cover and bolts (A).
2. Remove and discard the plastic plugs from the deck at the locations used by bolts (F & B, Figure 5).
3. Slide the deflector rod (D) through the pivot bracket (E).
4. Secure the front of the pivot bracket with a 5/16-18 x 3/4" carriage bolt (F) and flange whizlock nut (C).
5. Secure the back of the pivot bracket (E) and belt cover support (A) with a 5/16-18 x 1 capscrow (B), 5/16 washer (G), and flange whizlock nut (C).

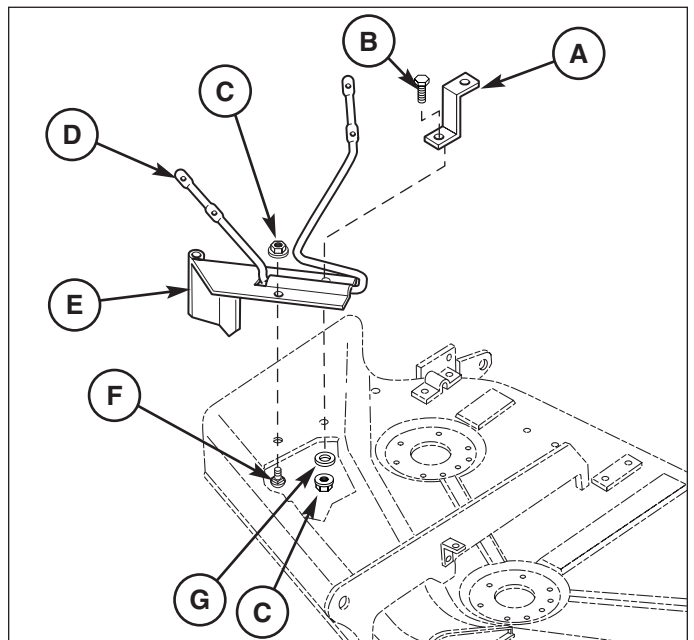


Figure 5. Install Deflector Hinge
A. Belt Cover Support
B. 5/16-18 x 1 Capscrow
C. 5/16-18 Whizlock Nuts
D. Deflector Support Rod
E. Pivot Bracket
F. 5/16-18 x 3/4 Carriage Bolt
G. 5/16 Washer

Initial Turbo Installation

Install Deflector

1. See Figure 6. Drill four 13/64" holes from the bottom of the deflector at the pre-molded drill points (A, bottom of deflector).
2. Attach the deflector to the support rod wire-form using four #10-14 x 3/4 truss head screws and nylock nuts.

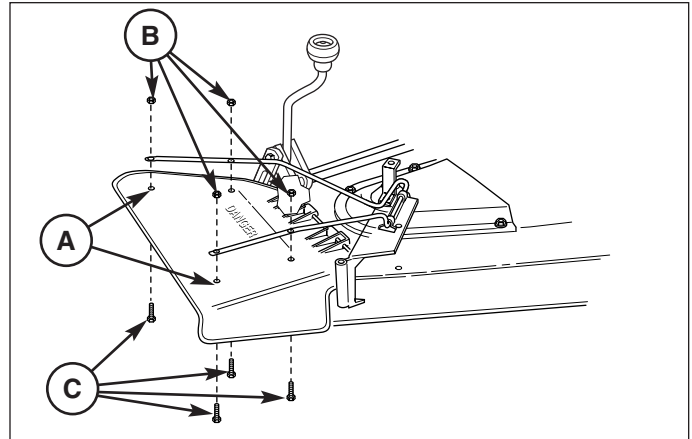


Figure 6. Install Deflector

- A. 13/64 Hole Locations C. Screws, #10-24 x 3/4
 B. Nylock Nuts

Install Belt Guide

1. See Figure 7 & 8. Locate the taptite screw that will be replaced by capscrew (C). Remove and discard the taptite screw
2. Assemble the 5/16-18 x 1-1/2 capscrew (C), lock-washer (E), washers (B), belt stop (D) and spacer (A).
3. Secure the belt stop assembly to the deck in the location shown.

Note The belt stop (D, Figures 7 & 8) is located and oriented differently in 44" and 50" applications. For all applications, when turbo is installed, beld stop (D) should be outside the belt 1/8" away from the backside of the belt.

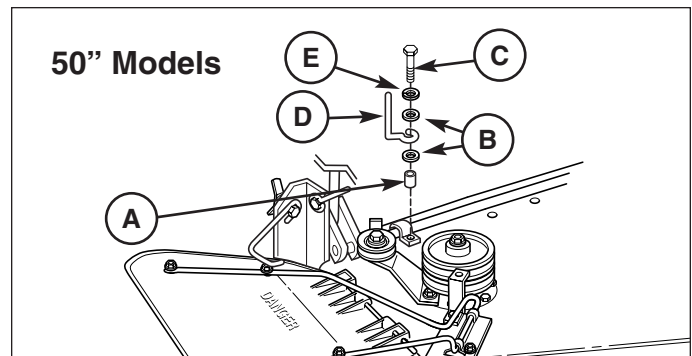


Figure 7. Install Belt Guide

- A. Spacer D. Belt Stop
 B. 5/16 Washers E. Lockwasher, 5/16
 C. Capscrew, 5/16-18 x 1-1/2

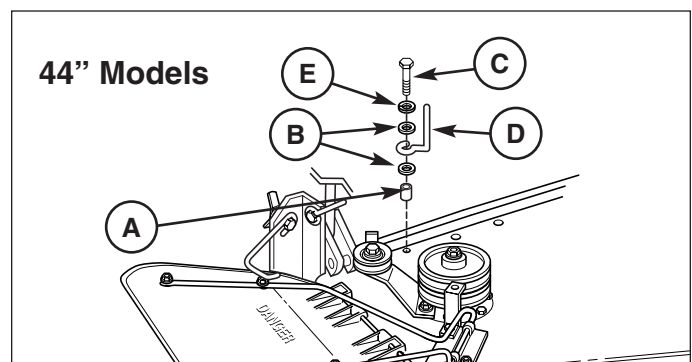


Figure 8. Install Belt Guide

- A. Spacer D. Belt Stop
 B. 5/16 Washers E. Lockwasher, 5/16
 C. Capscrew, 5/16-18 x 1-1/2

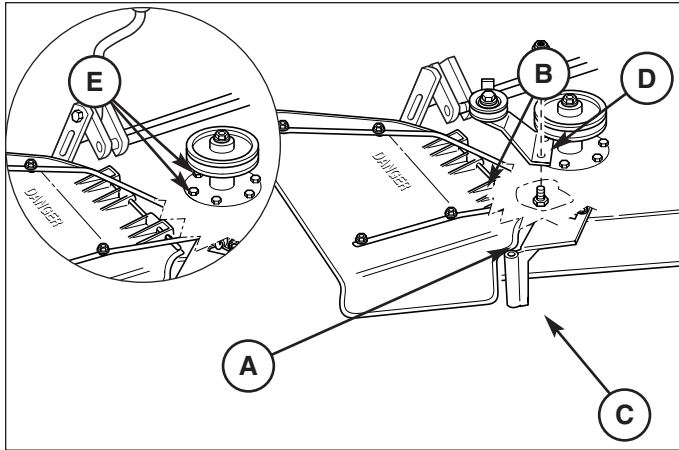


Figure 9. Install Idler Assembly

- | | |
|-----------------------------------|-----------------------------|
| A. Idler Assembly. | D. Locknuts, 5/16-18 |
| B. Belt Guide | E. Taptite Screws |
| C. Capscrew, 5/16-18 x 7/8 | |

Install Idler Assembly & Belt Cover

1. See Figure 9. Remove and discard the two taptite screws from locations (E).
2. Insert two 5/16-18 x 7/8 capscrews (C) through the mower deck and arbor. Tighten the capscrews.
3. Mount the idler pulley assembly (A) to the deck using the two 5/16-18x 7/8 capscrews (C) and 5/16-18 whizlock nuts (D).

Install Turbo Drive Pulley

1. See Figure 10. Remove the arbor drive belt from the right side arbor pulley.
2. Remove and discard the flange nut and spring washers securing the arbor pulley and spacer (A). Retain the pulley and spacer (A).
3. Install the new spacers (B & F), turbo drive pulley (C), spring washer (D), and sleeve nut (E). Be sure the notches in the pulleys and spacers are aligned. Install the spring washer concave side down. Torque the sleeve nut to 55-70 ft. lbs. (74-95 N.m).
4. Reinstall the arbor drive belt on the lower pulley.

Install Anchor Bracket

1. See Figure 12. If not already done, assemble the anchor bracket and related components as shown in Figure 11.
2. Attach the anchor bracket assembly (B, Figure 12) to the mower deck using 5/16-18 x 1 capscrews (A) and 5/16-18 locknuts (C).

NOTE: The deflector latch **MUST** secure the deflector in a down position—as shown in Figure 7.

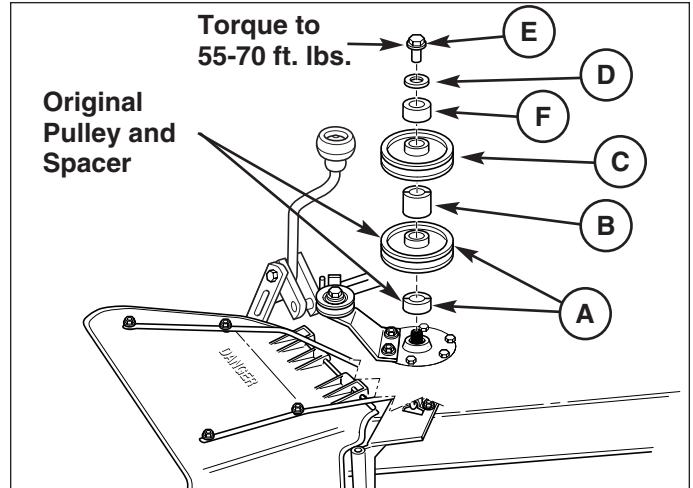


Figure 10. Install Turbo Drive Pulley

- | | |
|--|-------------------------|
| A. Original Pulley & Spacer | D. Spring Washer |
| B. Spacer, W/Notches (New) | E. Sleeve Nut |
| C. Pulley (New) | F. Spacer (New) |

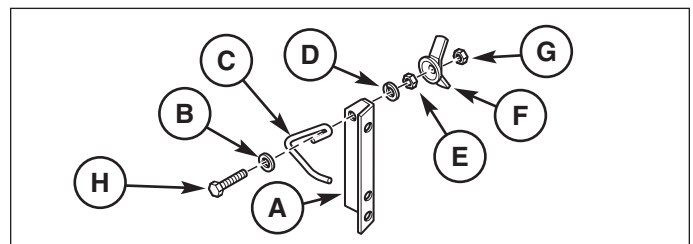


Figure 11. Anchor Bracket Assembly

- | | |
|-----------------------------------|-------------------------------------|
| A. Anchor Bracket | E. Nut, Hex, 5/16 |
| B. Lockwasher, 5/16, Large | F. Wing Nut, 5/16 |
| C. Latch, Spring | G. Locknut, 5/16 |
| D. Lockwasher, 5/16, Small | H. Capscrew, 5/16-18 x 2-1/2 |

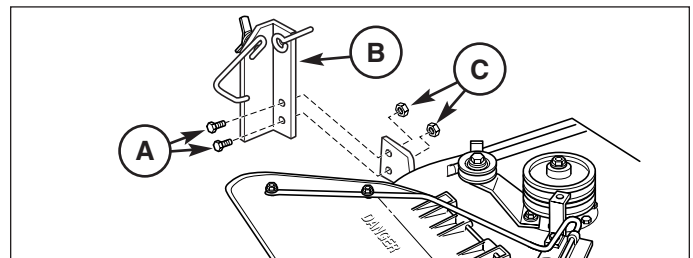


Figure 12. Anchor Bracket Installation

- | | |
|----------------------------------|--------------------------|
| A. Capscrews, 5/16-18 x 1 | B. Anchor Bracket |
| C. Locknut, 5/16-18 | |

Initial Turbo Installation

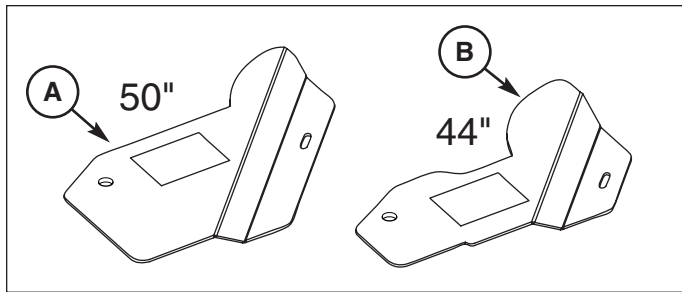


Figure 13. Belt Cover Plates
A. Belt Cover Plate for 50" Mower
B. Belt Cover Plate for 44" Mower

WARNING

When the turbo blower assembly is removed from the mower deck, the deflector **MUST** be properly installed.

Install Belt Cover Plate

1. Attach the belt cover plate (B, Figure 13 & 14) to the support bracket (E) using a 5/16-18 x 1 capscrew (C), washer (D) and nylock nut (F).

NOTE: This cover plate must be able to pivot on the support bracket. Different belt covers are required for different applications. Refer to Figure 13.

2. Rotate the belt cover until the notch catches the idler assembly belt cover latch (A, Figure 14). Cover latch (A) may need to be rotated for proper alignment.

Install Turbo Belt

1. Locate the correct drive belt for your installation: 44" models require drive belt 1705142, 50" models require drive belt 1707956 (the part number is stamped on the belt).
2. Loosen the hardware securing the drive pulley belt guide (B, Figure 15 & 16) and the idler pulley (C)
3. Install the drive belt as shown in Figures 15 & 16.
4. Tighten the hardware securing the drive pulley belt guide (B) and idler pulley (C). The idler belt guide should be within 1/16" of the belt.

Install Mounting Bracket

1. See Figures 15 & 16. Locate and remove the two longer capscrews used to secure the rear of the turbo housing and idler spring anchor.
2. Install the turbo mounting bracket (A) using the removed hardware. Note that the bracket is mounted in two different positions depending on the application.

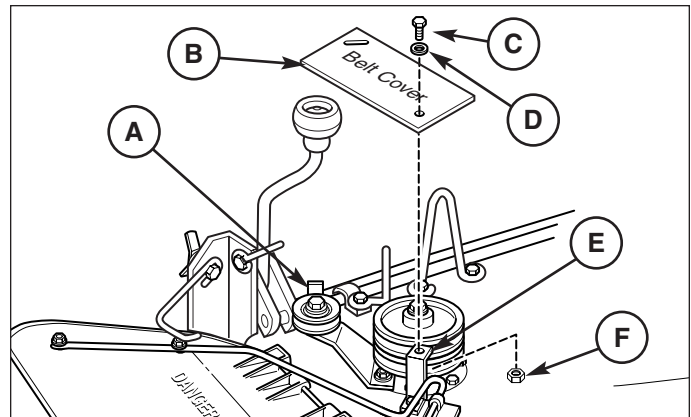


Figure 14. Install Belt Cover Plate
A. Belt Cover Latch **E. Support Bracket**
B. Belt Cover Plate **F. Nylock Nut, 5/16**
C. Capscrew, 5/16-18 x 1
D. Washer, 5/16

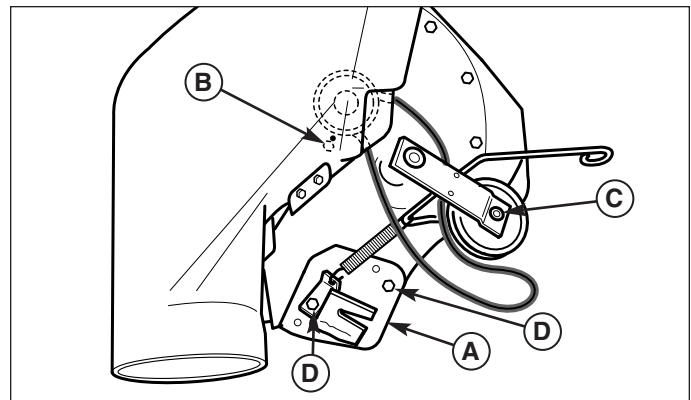


Figure 15. Belt Routing - 44" Models
A. Mounting Bracket
B. Drive Pulley Belt Guide Hardware
C. Idler Pulley Hardware
D. Mounting Bracket Hardware

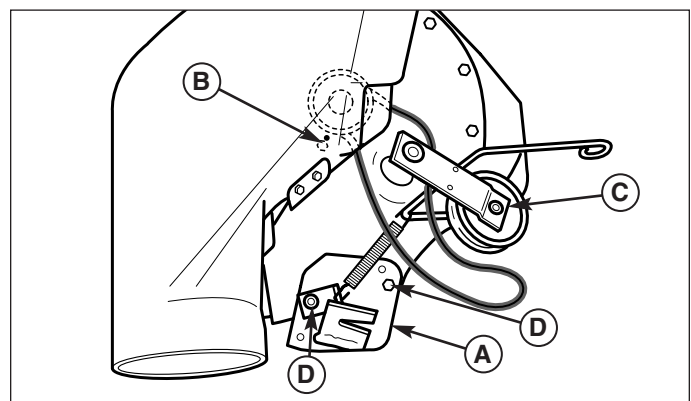


Figure 16. Belt Routing - 50" Models
A. Mounting Bracket
B. Drive Pulley Belt Guide Hardware
C. Idler Pulley Hardware
D. Mounting Bracket Hardware

Initial Turbo Installation

Install Turbo Blower

1. Install the turbo unit by sliding the turbo pivot rod into the pivot bracket at the front edge of the mower deck (A, Figure 17).
2. Tilt the deflector UP (B).
3. Rotate the turbo unit (C) into position on the discharge of the mower deck, and “latch” the slot in the turbo housing over and onto the anchor bracket at (D). Tighten the wing nut (E) to secure.

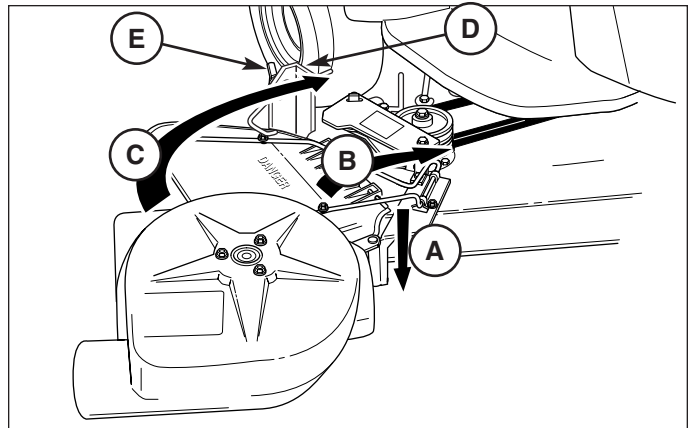


Figure 17. Install Turbo Blower

A. Pivot Bracket
B. Deflector
C. Turbo

D. Anchor Bracket
E. Sleeve Nut

Install Turbo Drive Belt

1. See Figure 18. Attach the turbo belt to the top RH pulley on the mower deck. Pull back on the belt tensioning lever to slacken the belt. A view (from right front of mower) of the belt routing is shown at right.

NOTE: While attaching, it may be necessary to unlatch the turbo and realign the belt on the pulleys inside the turbo housing.

2. After the belt is installed, adjust the belt stop (D, Figure 11 & 12) so that it is 1/8” away from the backside of the belt.

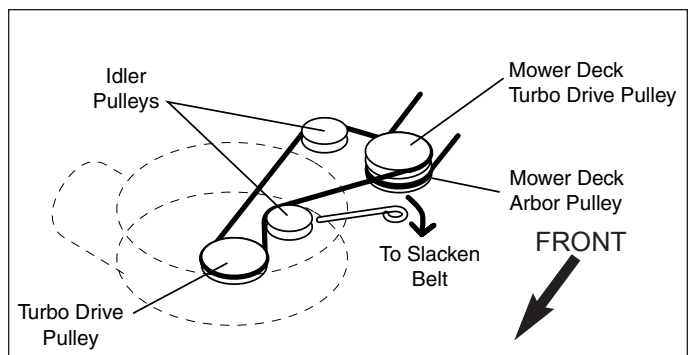


Figure 18. Turbo Belt Routing

Secure Belt Cover

1. The belt cover plate (A, Figure 19) is a safety shield — after attaching or detaching the turbo unit, it MUST BE rotated onto the belt cover latch (B).

CAUTION

Before you begin operating the unit with the Turbo attached, be certain you have read all of the safety and operational information on the last page of this instruction sheet, as well as the Operator’s Manual for the tractor and any grass catchers or other collection devices used in conjunction with this turbo blower.

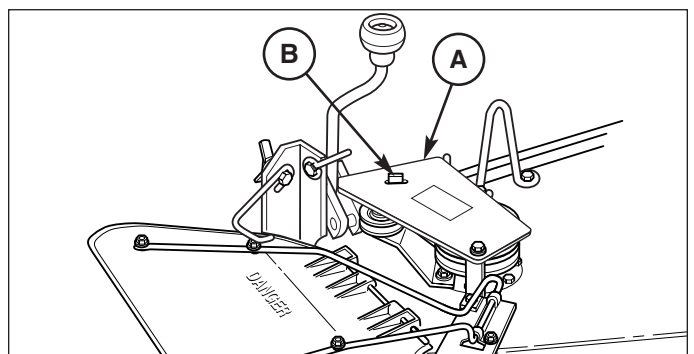
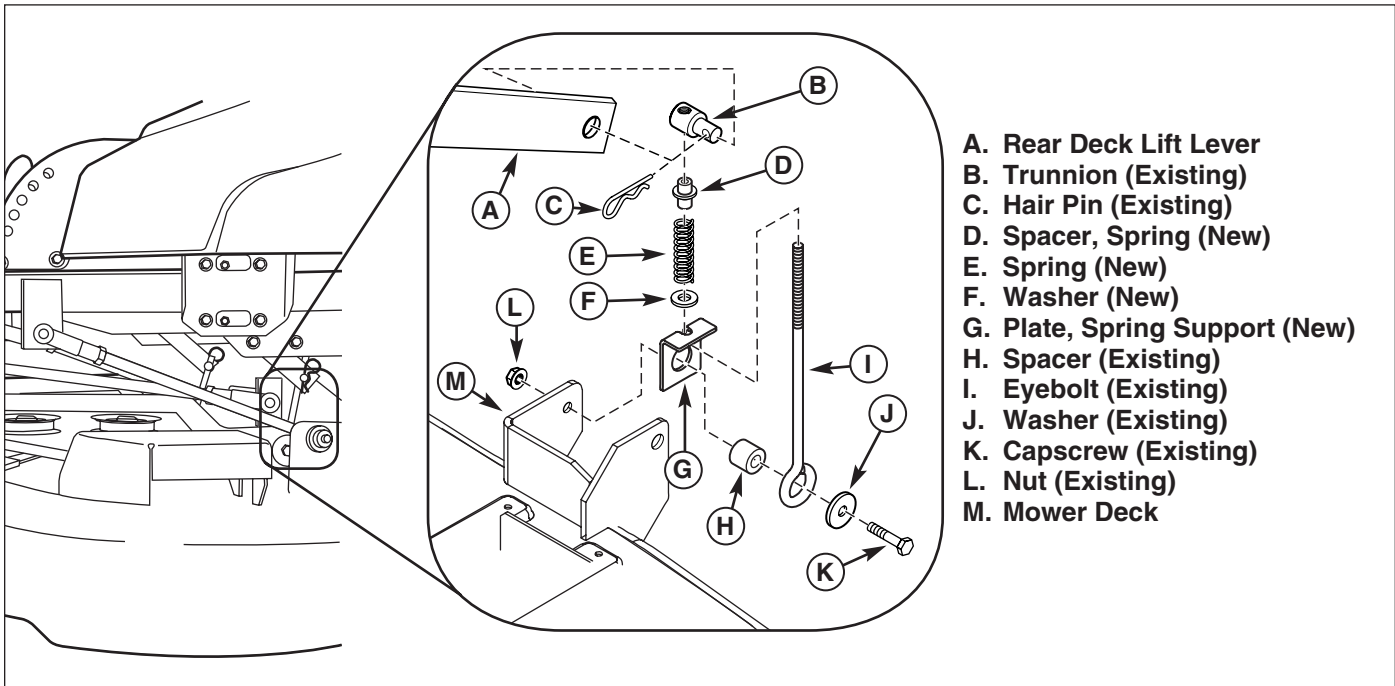


Figure 19. Belt Cover

A. Belt Cover Plate
B. Belt Cover Latch

Initial Counter Balance & Weight Carrier Installation

Setup



- A. Rear Deck Lift Lever
- B. Trunnion (Existing)
- C. Hair Pin (Existing)
- D. Spacer, Spring (New)
- E. Spring (New)
- F. Washer (New)
- G. Plate, Spring Support (New)
- H. Spacer (Existing)
- I. Eyebolt (Existing)
- J. Washer (Existing)
- K. Capscrew (Existing)
- L. Nut (Existing)
- M. Mower Deck

Figure 1. Counter Balance Installation

COUNTER BALANCE & WIEGHT CARRIER INSTALLATION

Counter Balance Installation

1. Remove hair pin (C, Figure 1) from trunnion (B). Remove trunnion (B) from rear deck lift lever (A). Mark or measure trunnion position on rear deck lift lever. Remove trunnion (B) from from eyebolt (I).
2. Remove capscrew (K), washer (J), eyebolt (I), spacer (H) and nut (L) from mower deck (M).
3. Thread eyebolt (I) through plate (G) as shown.
4. Attach capscrew (K), washer (J), eyebolt (I), spacer (H), to mower deck (M) securing with nut (L).
5. Slide washer (F), spring (E), and spacer (D) onto eyebolt (I) as shown.
6. Install trunnion (B) onto eyebolt (I) to position of measurement or mark from step 1.
7. Install trunnion (B) into rear deck lift lever (A) secure with hair pin (C). Check deck leveling as described in Operators Manual and make necessary adjustments.

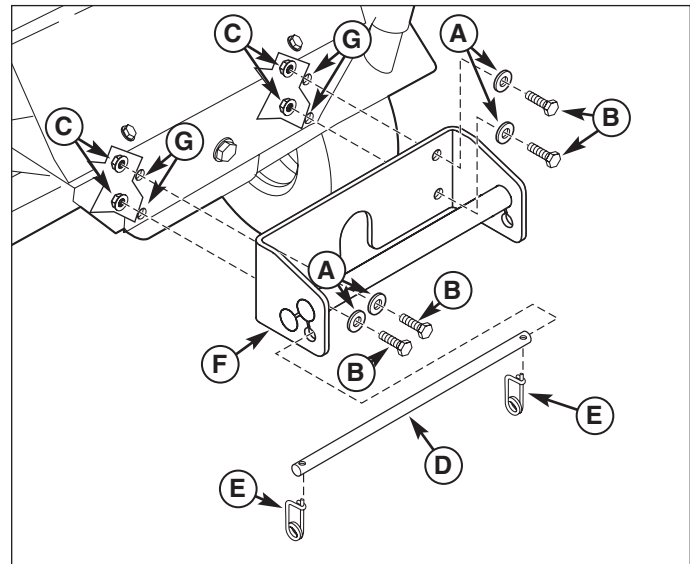
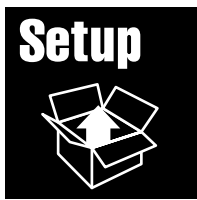


Figure 2. Front Weight Carrier Installation

- A. Washer, 5/16
- B. Capscrew, 5/16-18 x 1
- C. Locknut, 5/16-18
- D. Rod
- E. Clips, Safety
- F. Carrier, Weight
- G. Holes

Front Weight Carrier Installation

1. Remove and discard hardware from holes (G, Figure 2).
2. Install carrier (F) as shown securing with 5/16-18 cap-screws (B), 5/16 washers (A), and 5/16 locknuts (C).
3. Rod (D) and safety clip (E) are used to secure required weights.



Initial Hitch & Tube Installation

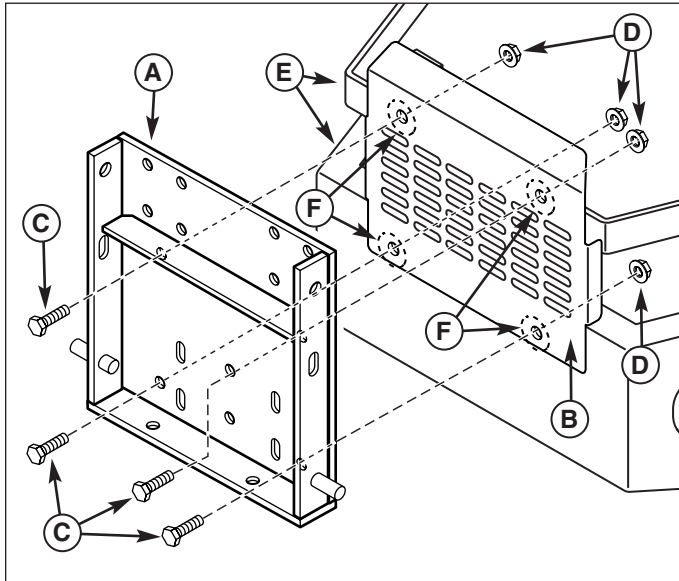


Figure 1. Install Hitch Plate
A. Hitch Plate
B. Heat Shield
C. Capscrews Hex, 1/2-13 x 1-1/4
D. Locknuts, 1/2-13
E. Upper & Lower Bumper
F. Existing Holes

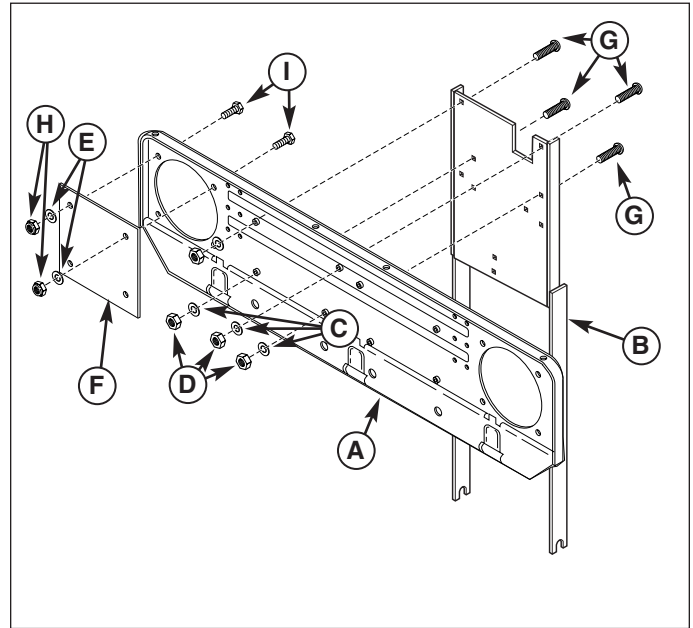


Figure 2. Install Hitch Assembly
A. Back Plate
B. Support Assembly
C. Lockwashers, 5/16
D. Nut, 5/16-18
E. Washers, 5/16
F. Cover Plate
G. Carriage Bolts, 5/16-18 x 1
H. Nylock Nut, 5/16-18
I. Capscrews, 5/16-18 x 3/4

HITCH & TUBE INSTALLATION

Install Hitch Plate and Back Plate

1. Remove and discard hardware holding heat shield (B, Figure 1) to upper and lower bumper (E).
2. Open existing holes (F) in heat shield (B) and upper & lower bumper (E) to 17/32". Install hitch plate (A) to upper and lower bumper (E) keeping heat shield (B) in between as shown. Secure with 1/2-13 x 1-1/4 capscrews (C) and 1/2-13 locknuts.
2. Install the cover plate (F, Figure 2) on the back plate (A). Secure with four 5/16-18 x 1 capscrews (I), washers (E) and 5/16-18 locknuts (H).
3. Attach the back plate (A, Figure 2) to the support assembly (B) using 5/16-18 x 1 carriage bolts (G), 5/16 lockwashers (C) and 5/16 nuts (D).
4. Set the back plate and support (A, Figure 3) onto pins of hitch plate (C). Secure with rod (D) and hair pin (B).

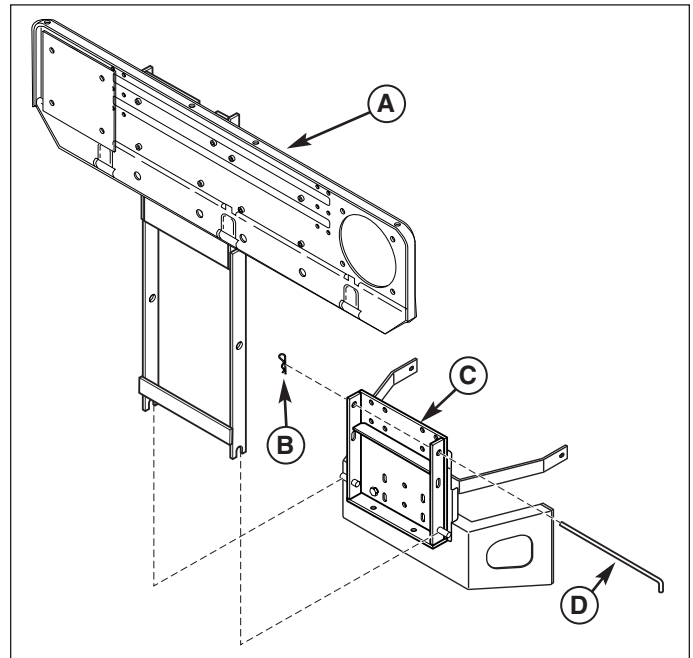


Figure 3. Install Back Plate
A. Back Plate and Support
B. Hair Pin
C. Hitch Plate
D. Rod

Initial Hitch & Tube Installation

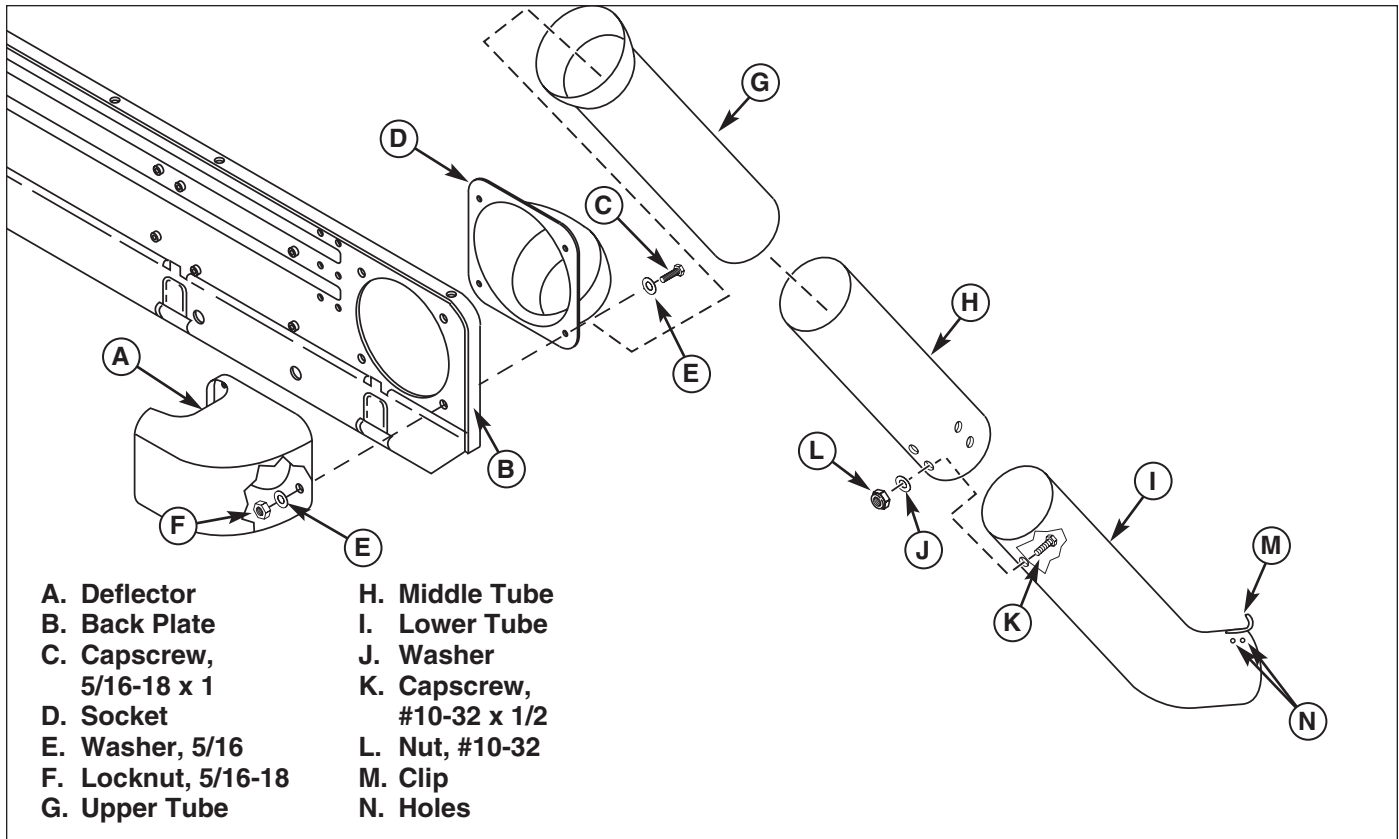


Figure 4. Assemble Tubes & Deflector

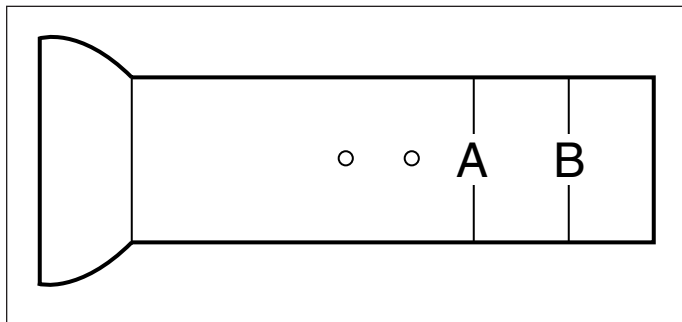


Figure 5. Upper Tube Length

Assemble Tubes & Deflector

1. 50" models covered by this manual require upper tube (G, Figure 5) to be shortened. Shorten tube by cutting through along line "B" line. See Figure 5.
2. If not already done, insert the upper tube (G, Figure 4) into the socket (D). Insert the tube from the front. This will require some effort.
3. Mount the socket (D, Figure 4) and deflector (A) to the back plate (B) using the four 5/16-18 x 1 cap-screws (C), eight flat washers (E), and four nylock nuts (L) as shown in Figures 4 & 6.

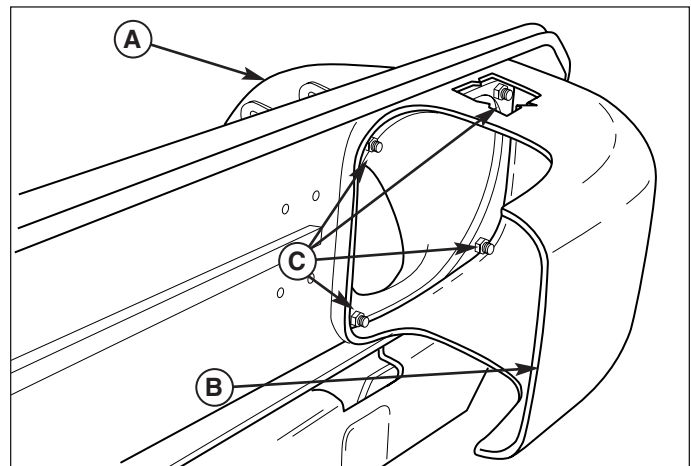


Figure 6. Mount Deflector and Tube Pivot

- A. Tube Pivot** **C. 5/16" Mounting Hardware**
B. Deflector

4. Insert the lower tube (I, Figure 4) into the middle tube (H). Secure the tubes as shown in Figure 4 using #10-32 x 1/2 capscrews, washer (J) and #10-32 nut. Insert middle tube (H) (Secure the elbow to the turbo using clip (M)). Clip (M) may need to be relocated to a different set of holes (N) to ensure secure fit.

Note: Use correct hole locations to maintain proper tube connections and prevent lower tube from disconnecting from the turbo.

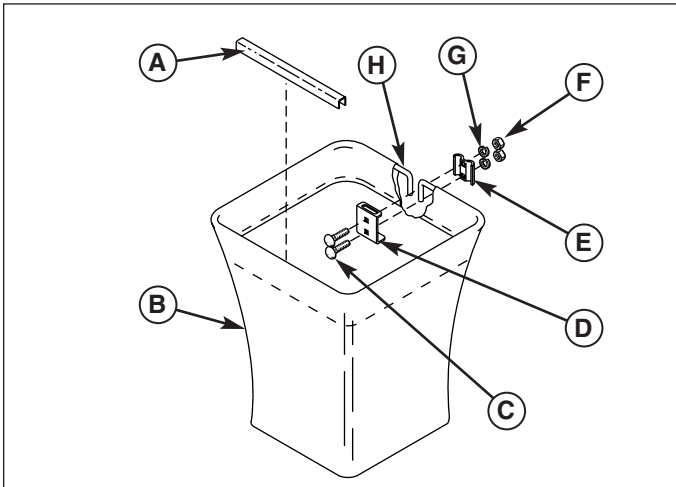


Figure 1. Assemble Catcher Bags

- | | |
|--------------------------------|---------------|
| A. Clip | E. Clamp |
| B. Cloth Bag | F. Nut |
| C. 5/16-18 x 3/4 Carriage Bolt | G. Lockwasher |
| D. Hanger Bracket | H. Wire Hoop |

COLLECTOR ASSEMBLY

Assemble Catcher Bags

1. See Figure 1. Insert the wire hoop (H) through the cloth bag (B).
2. Install the clamp (E) and hanger bracket (D). Secure with two 5/16-18 x 3/4 carriage bolts (C), lockwashers (G) and nuts (F).

Install Cover

1. See Figure 2. Hook the bags (A) on the back plate (B). *Note: If desired, the bags can be lined with 30 gallon trash bags for easy disposal.*
2. See Figure 3. Set the cover (A) on top of the bags (B) and align the hinges (C).
3. See Figure 4. Install the hinge pins (B) through the hinges (C) and secure with a hair pin clip (D).

NOTE: Push the hair pin clips all the way on or they will be bent by the hinge when the cover is opened.

CAUTION

Before you begin operating the unit be certain you have read all of the safety and operational information of this instruction sheet, as well as the Operator's Manual for the tractor and any other attachments.

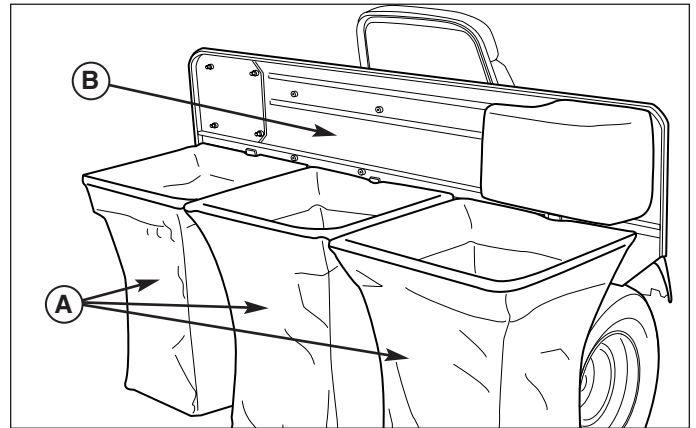


Figure 2. Install the Bags

- A. Bags
B. Back Plate

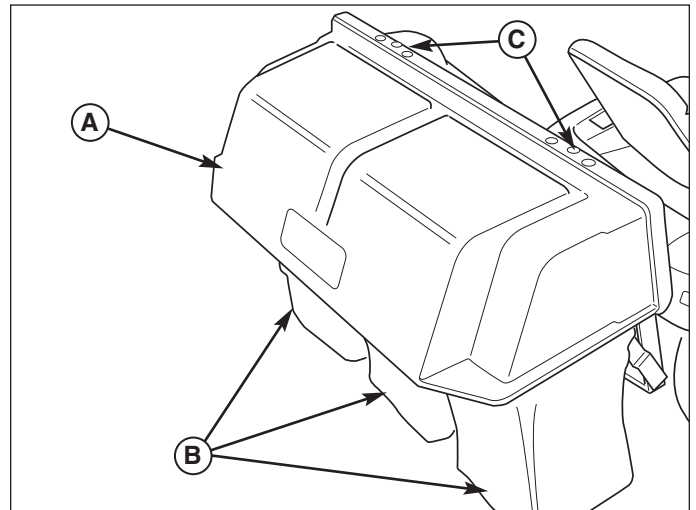


Figure 3. Install Cover

- A. Cover
B. Bags
C. Hinges

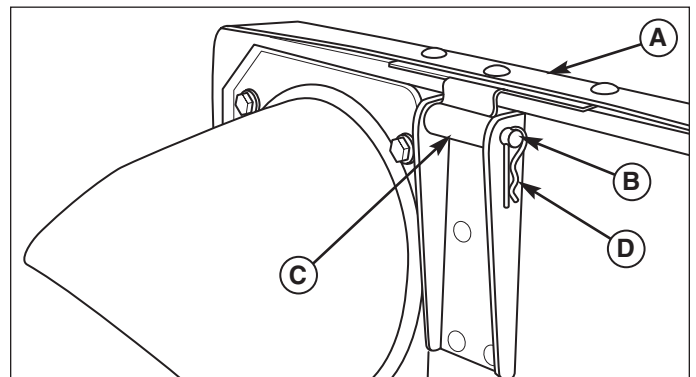


Figure 4. Install Hinge Pins

- A. Cover
B. Hinge Pin
C. Hinge
D. Hair Pin Clip

Removing & Re-attaching Grass Catcher

Attach

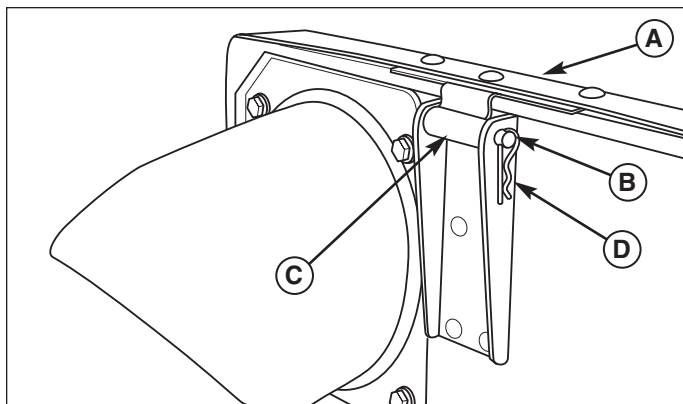


Figure 1. Remove the Cover

- A. Cover
B. Hinge Pin
C. Hinge
D. Hair Pin Clip

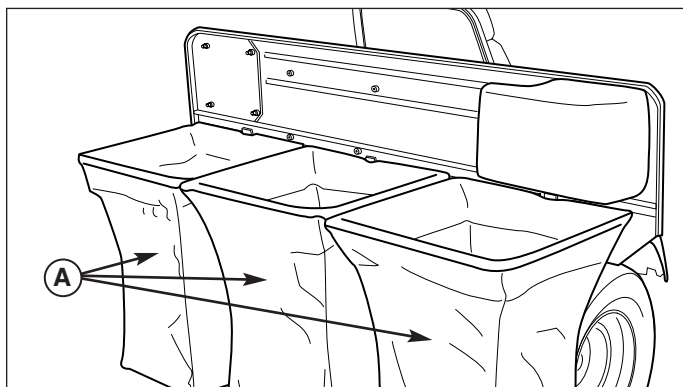


Figure 2. Remove the Bags

- A. Bags

REMOVING & RE-ATTACHING THE GRASS CATCHER

Removing the Grass Catcher & tubes

1. Remove the hair pin clips (D, Figure 1) and hinge pins (B) and remove the cover (A).
2. Remove the bags (A, Figure 2) by lifting them off their hooks. Empty any grass out the bags.
3. Unclip middle and lower tube assembly (B, Figure 4) and remove from turbo and upper tube.
4. **Warning: Back plate (A) will fall when rod (D) is removed.** Remove the hair pin (B, Figure 3) and rod (D) while holding back plate (A).
5. Lift the back plate and support assembly (A, Figure 3) off hitch plate (C).

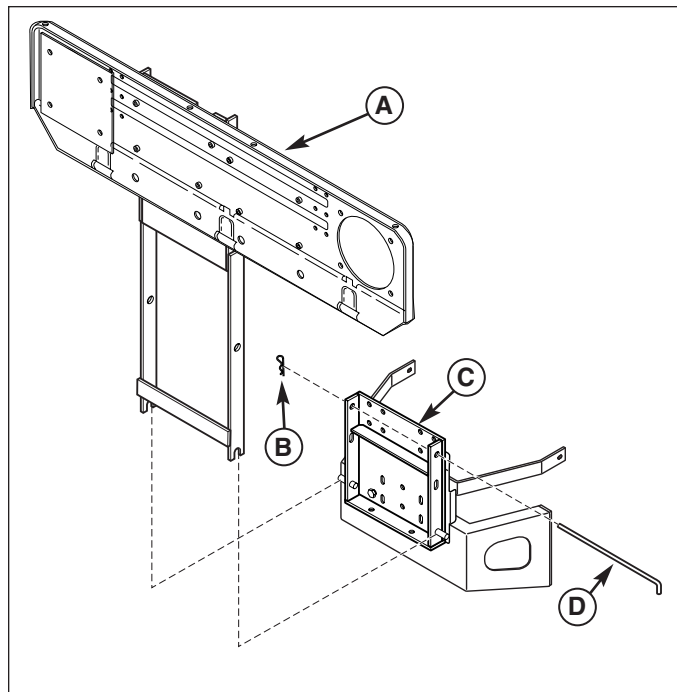


Figure 3. Install Back Plate

- A. Back Plate & Support
B. Hair Pin
C. Hitch Plate
D. Rod

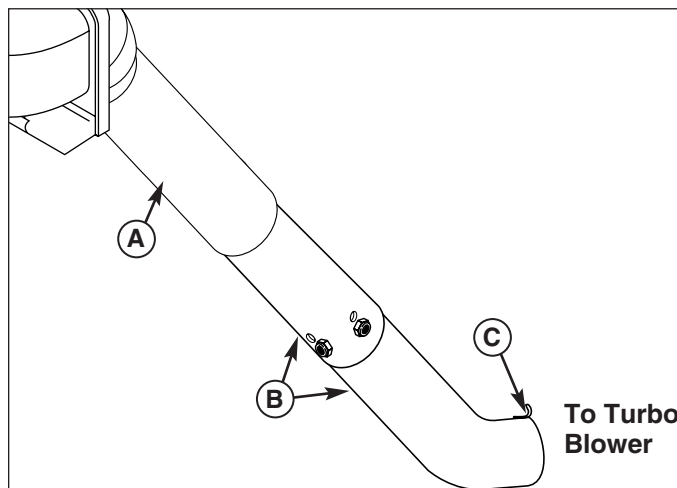


Figure 4. Assemble Tubes

- A. Upper Tube
B. Middle & Lower Tube
C. Clip

WARNING

OPERATION WITHOUT TURBO & CATCHER

For operation without turbo, the mower deflector **MUST** be properly installed in the down position and retained by the spring latch (see turbo operator's manual).

Removing and Re-attaching Grass Catcher

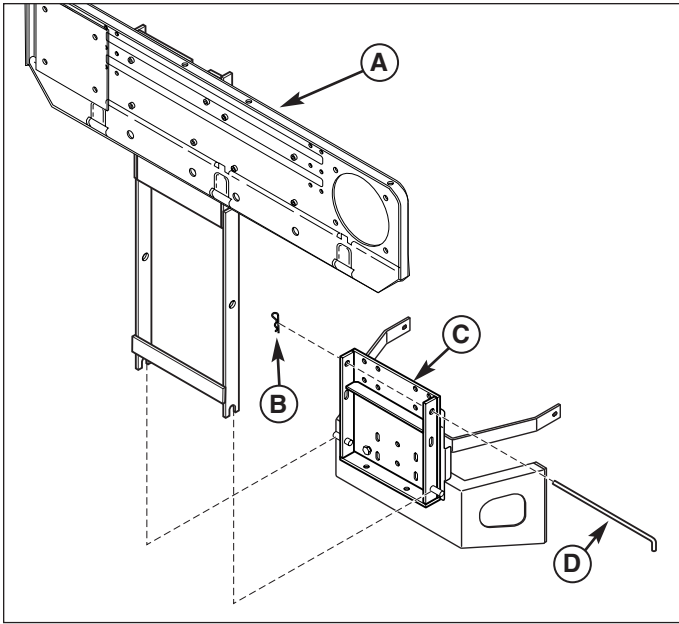


Figure 5. Install Back Plate
A. Back Plate & Support **C. Hitch Plate**
B. Hair Pin **D. Rod**

Re-attaching the Grass Catcher

1. Set the back plate and support (A, Figure 5) onto pins of hitch plate (C). Secure with rod (D) and hair pin (B).
3. Hook the bags (A, Figure 6) on the back plate (B).
4. Install the catcher cover (A, Figure 7 & 8) and secure with the hinge pins (B) and hair pin clips (D).

NOTE: Push the hair pin clips all the way on or they will be bent by the hinge when the cover is opened.

5. Insert middle & lower tube (B, Figure 4) into upper tube (A) and clip (C) onto turbo.

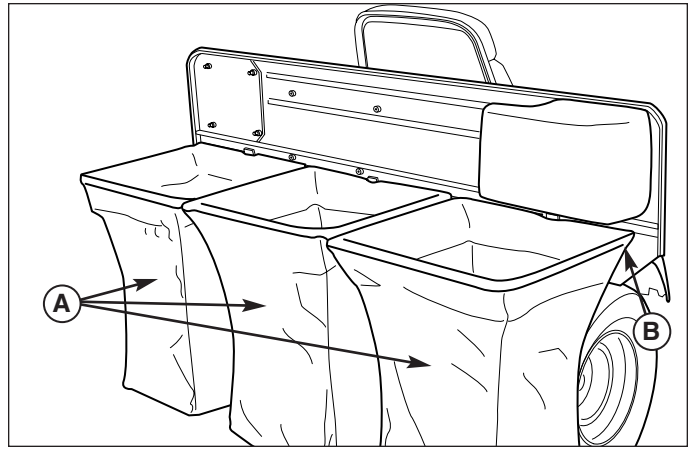


Figure 6. Bags
A. Bags
B. Back Plate

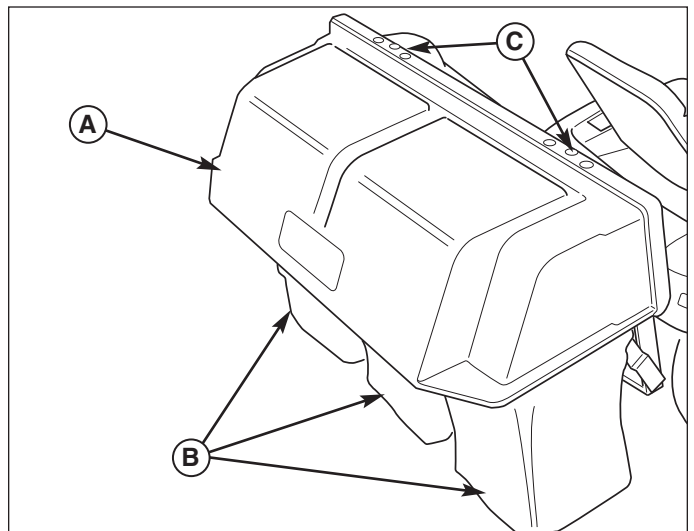


Figure 7. Install Cover
A. Cover **C. Hinges**
B. Bags

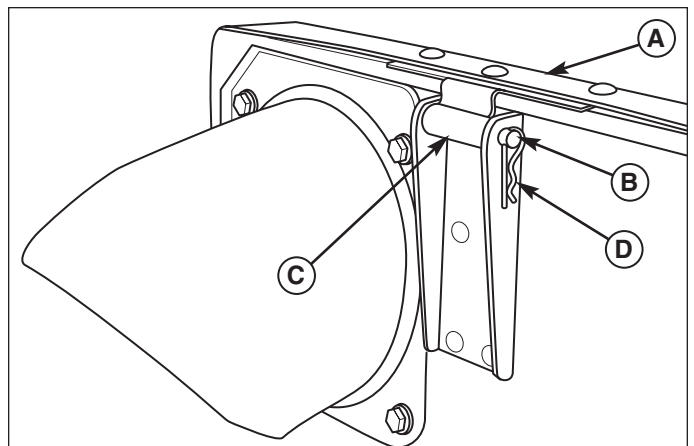
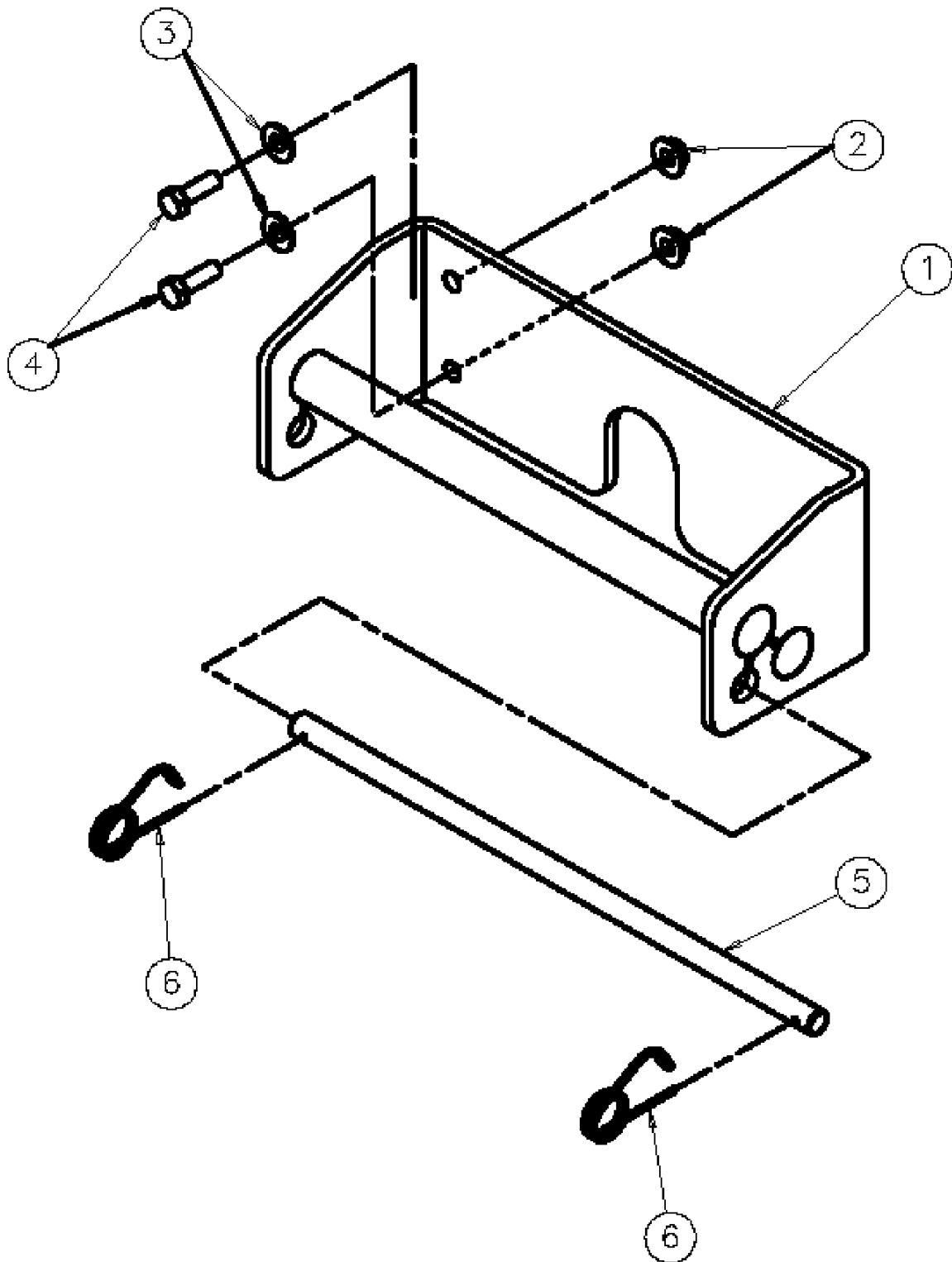


Figure 8. Install Hinge Pins
A. Cover **C. Hinge**
B. Hinge Pin **D. Hair Pin Clip**

FRONT WEIGHT CARRIER GROUP

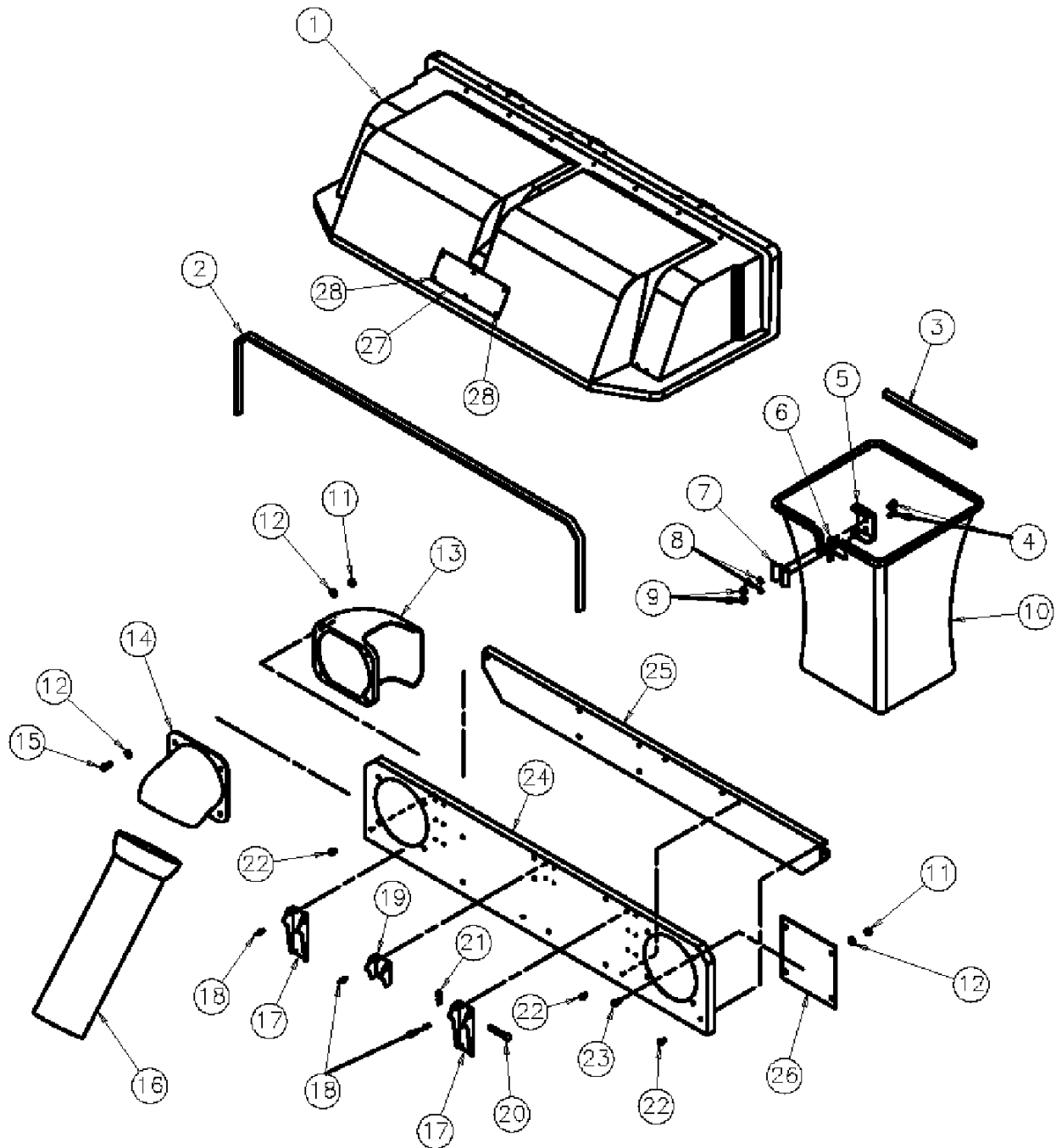


FRONT WEIGHT CARRIER GROUP

Item	Part No	Qty	Description	Note
1	5049082	1	MOUNT - WEIGHT	<i>CONSUMER Z TWIN & TRIPLE BAGGER 986507- 01</i>
2	1927557	4	NUT-HEX FL. WHIZ LK. .312-18	
3	1919326	4	WASHER .312	
4	1921333	4	CAPSCREW-HEX HD .312-18 X 1.00	
5	5049143	1	ROD - RETAINING	
6	176012	2	CLIP - SAFETY	

Footnotes:

TRIPLE CATCHER GROUP

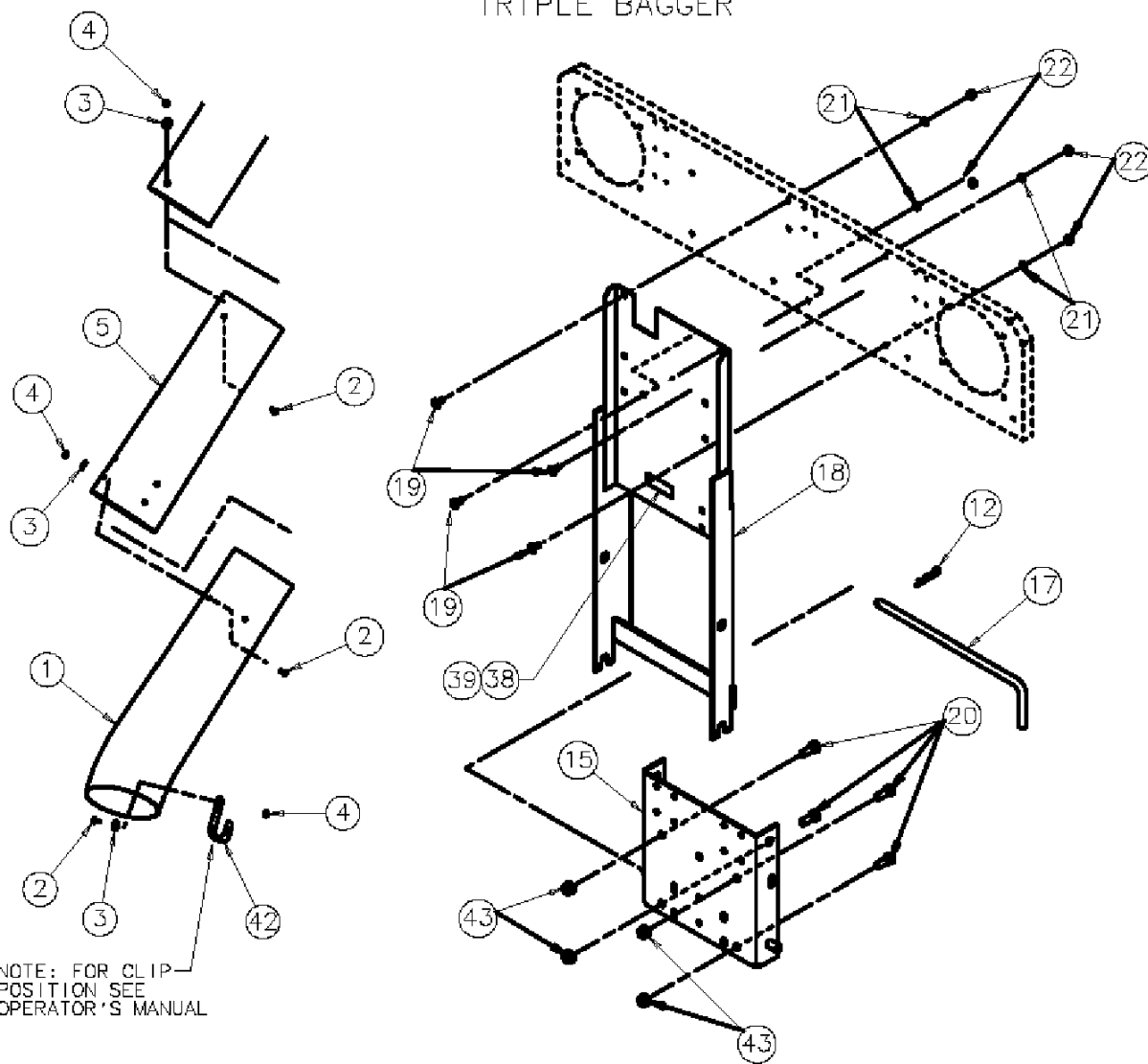


TRIPLE CATCHER GROUP

Item	Part No	Qty	Description	Note
1	1717025	1	COVER ASSEMBLY	<i>CONSUMER Z TRIPLE BAGGER 986509 - 01</i>
2	1717082	1	SEAL	
3	1675707	3	TUBE - CLIP GRASS BAG	
4	1931333	6	CARRIAGE BOLT .312-18 X .75	
5	1703807	3	HANGER	
6	1703855	3	HOOP - BASKET FRAME	
7	1672023	3	CLAMP	
8	1917356	6	LOCKWASHER .312	
9	1917372	6	NUT - HEX .312-18	
10	1703764	3	BAG - GRASS (WHITE)	
11	1919438	8	NUT - HEX NYLON LK .312-18	
12	1919326	12	WASHER .312	
13	1717039	1	DEFLECTOR	
14	1717038	1	JOINT - INLET	
15	1921333	4	CAPSCREW - HEX .312-18 X 1.00	
16	1719807	1	TUBE - UPPER	
17	1720875	2	BRACKET - HINGE	
18	1928707	16	RIVET .187 X .277 LG.	
19	1720945	1	BRACKET - HINGE	
20	1672344	3	PIN	
21	1960074	3	HAIRPIN	
22	1925003	3	CAPSCREW - TAPTITE .250-20 x .25	
23	1921332	4	CAPSCREW - HEX HD .312-18 X .75	
24	1716966	1	PLATE - FRONT	
25	1716973	1	CHANNEL ASSEMBLY	
26	1725969	1	COVER - INLET	
27	1704405	1	DECAL - SAFETY	
28	1667248	6	CLIP - CANOE	

Footnotes:

TRIPLE BAGGER

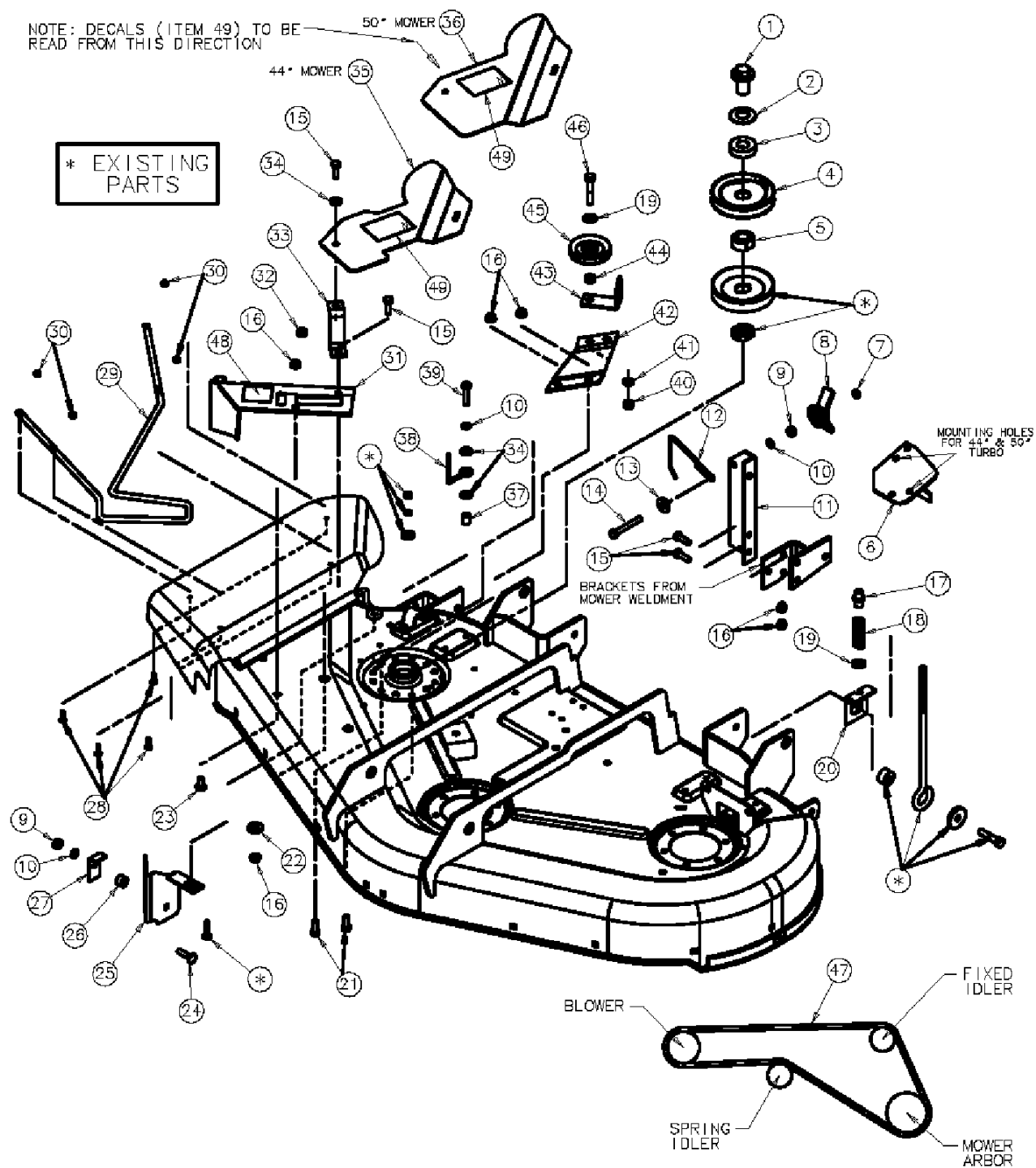


TUBE & HITCH GROUP

Item	Part No	Qty	Description	Note
1	5049152	1	LOWER TUBE	<i>CONSUMER Z TRIPLE BAGGER 986506 - 02</i>
2	1960404	5	SCREW-TRUSS HD. #10-24 X .75	
3	1960096	5	WASHER .312	
4	1933896	5	NUT-HEX NYLOCK #10-24	
5	5049151	1	TUBE-MID SECTION	
12	1960033	1	HAIRPIN CLIP	
15	1726968	1	HITCH PLATE ASSEMBLY	
17	1717085	1	HITCH ROD	
18	1723437	1	SUPPORT ASSEMBLY	
19	1931335	4	CARRIAGE BOLT .312-18 X 1.00	
20	1921176	4	CAPSCREW HEX HD .50-13 X 1.25	
21	1917356	4	LOCKWASHER - .312	
22	1917372	4	NUT - HEX .312-18	
38	1715709	2	STICKER MFG. #/SERIAL#	<i>Not a serviceable part</i>
39	1722472	1	OVERLAY MFG #/SERIAL#	<i>Not a serviceable part</i>
41	1726794	1	OPERATORS MANUAL TRIPLE (not shown)	<i>TP-100-4032-00-AT-SN</i>
42	1705063	1	CLIP - SPRING	
43	1960668	4	NUT-HEX FLG WZ LK .50-13	

Footnotes:

TURBO MOUNTING GROUP

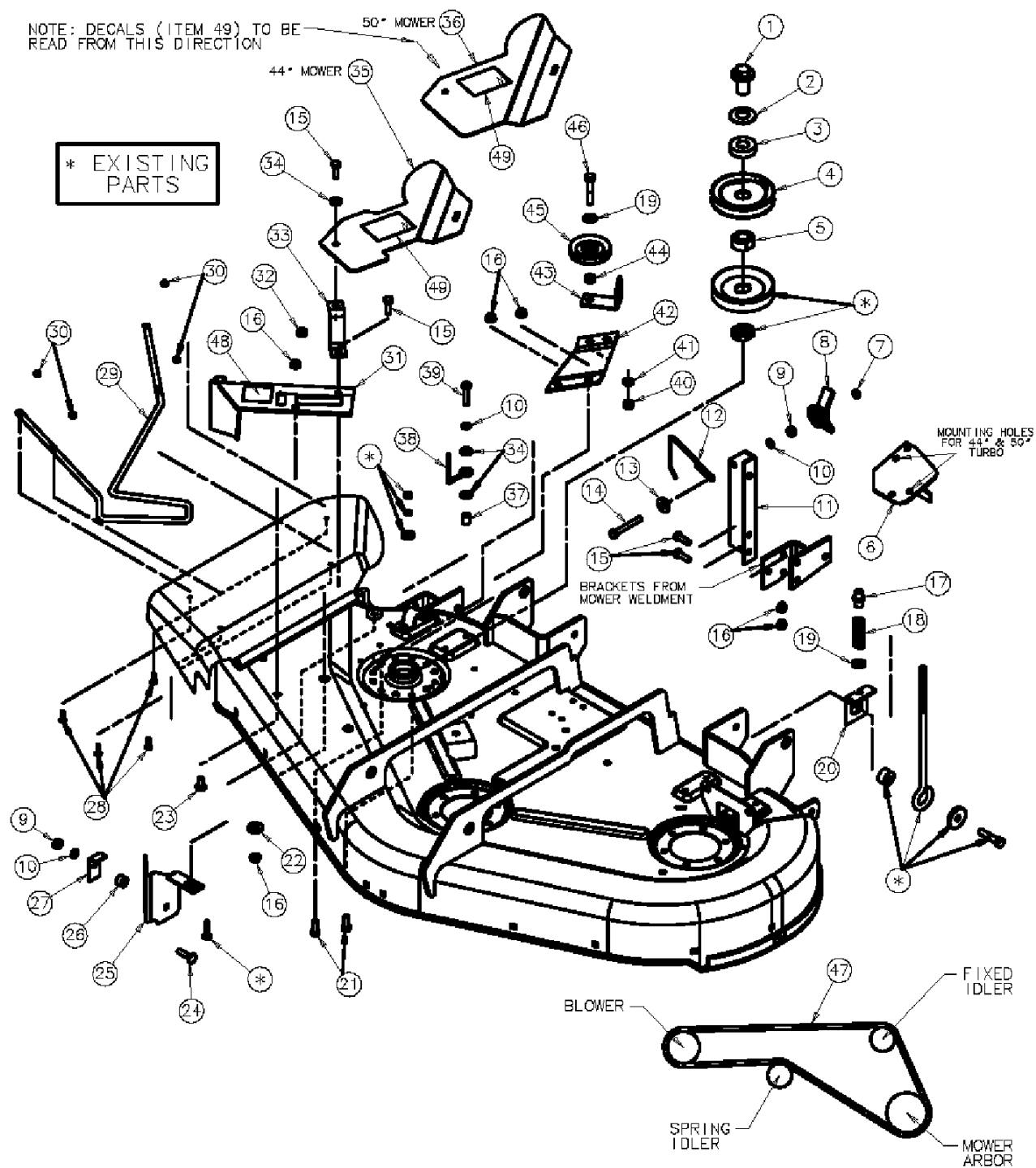


TURBO MOUNTING GROUP

Item	Part No	Qty	Description	Note
1	1713523	1	NUT - SLEEVE .562-18 x .75	<i>CONSUMER Z TWIN & TRIPLE BAGGER 986508 - 02</i>
2	1603592	1	WASHER .88 ID X 1.75 OK X .08	
3	5049088	1	SPACER - PULLEY	
4	1709941	1	PULLEY - 4.3 OD X 1.0 ID	
5	1713623	1	HUB - DOUBLE .62	
6	1704983	1	BRACKET ASSEMBLY - TURBO	
7	1923362	1	NUT - HEX CONTERLOCK .312-18	
8	1679163	1	NUT & CUP ASSEMBLY .312-18	
9	1917372	2	NUT - HEX .312-18	
10	1917356	3	LOCKWASHER .312	
11	1704982	1	PLATE - ANCHOR	
12	1705064	1	SPRING - LATCH .125 WIRE	
13	1919381	1	WASHER .312	
14	1960318	1	CAPSCREW - .312-18 X 2.5	
15	1921333	4	CAPSCREW - .312-18 X 1.0	
16	1931277	6	NUT - WHIZ LOCK .312-18	
17	5049144	1	SPACER - SPRING HOLDER	
18	5049159	1	SPRING - LATCH .125 WIRE	
19	1924940	2	WASHER .375	
20	5049145	1	PLATE - SPRING SUPPORT	
21	1923325	2	CAPSCREW .312-18 X .875	
22	1922755	1	WASHER .375	
23	1931333	1	CARRIAGE BOLT - .312-18 X .75	
24	1960223	1	CARRIAGE BOLT - .312-18 X 1.25	
25	1704880	1	BRACKET ASSY - CUT OFF	
26	1666294	1	SPACER	
27	1705308	1	BRACKET - L	
28	1960404	4	SCREW - TRUSS PHILLIPS #10-24 X .75	
29	1718295	1	ROD - .375 DIA.	
30	1933896	4	NUT-HEX NYLON LK #10-24	
31	1722546	1	PIVOT BRACKET ASSEMBLY	
32	1919438	1	NUT - HEX .312-18	
33	1718304	1	SUPPORT - BELT COVER	
34	1919326	3	WASHER .312	
35	5049171	1	COVER - BELT 44"	
36	5049170	1	COVER - BELT 50"	
37	1710703	1	SPACER .328 ID X .499 OD X .625 LG	
38	172845	1	STOP - BELT .188 WIRE	
39	1921221	1	CAPSCREW .312-18 X .75	
40	1916950	1	NUT - HEX .375-18	

Footnotes:

TURBO MOUNTING GROUP



TURBO MOUNTING GROUP

Item	Part No	Qty	Description	Note
41	1916965	1	LOCKWASHER .375	
42	1704768	1	BRACKET - Z	
43	1724373	1	BRACKET - L	
44	108717	1	SPACER	
45	1714817	1	PULLEY - IDLER 2.75 OD X .38 ID	
46	1923701	1	CAPSCREW .375-16 X 2.0	
47	1705142	1	BELT-V 37.68" (USE ON 44")	
47	1707956	1	BELT-V 38.68" (USE ON 50")	
48	1713057	1	DECAL - PATENT	
49	1717291	2	DECAL - WARNING	

Footnotes:

Hardware Identification & Torque Specifications

Common Hardware Types

Hex Head Capscrew



Washer



Lockwasher



Carriage Bolt



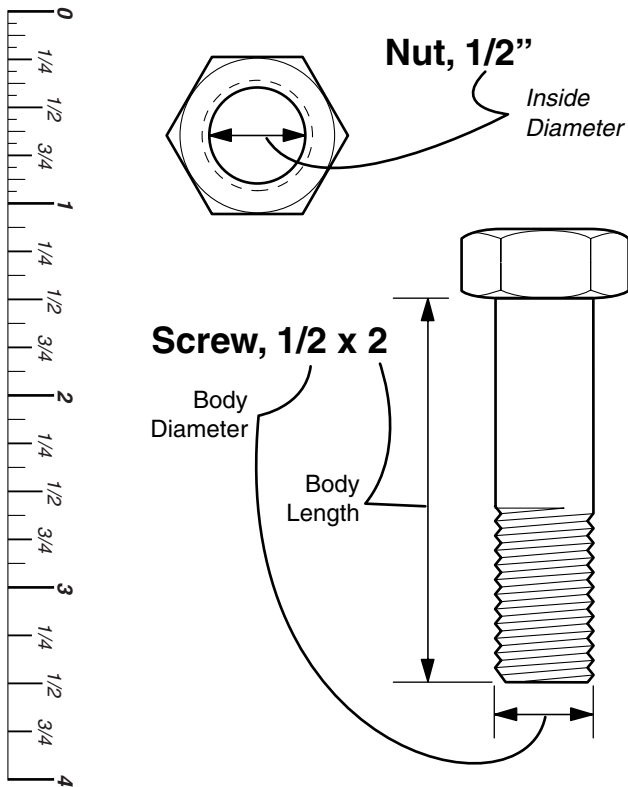
Hex Nut

Standard Hardware Sizing

When a washer or nut is identified as **1/2"**, this is the *Nominal size*, meaning the *inside diameter* is 1/2 inch; if a second number is present it represent the *threads per inch*

When bolt or capscrew is identified as **1/2 - 16 x 2"**, this means the *Nominal size*, or *body diameter* is 1/2 inch; the second number represents the *threads per inch* (16 in this example, and the final number is the *body length* of the bolt or screw (in this example 2 inches long).

The guides and ruler furnished below are designed to help you select the appropriate hardware and tools.



Torque Specification Chart						
FOR STANDARD MACHINE HARDWARE (Tolerance ± 20%)						
Hardware Grade	No Marks SAE Grade 2		SAE Grade 5		SAE Grade 8	
	in/lbs ft/lbs	Nm.	in/lbs ft/lbs	Nm.	in/lbs ft/lbs	Nm.
8-32	19	2.1	30	3.4	41	4.6
8-36	20	2.3	31	3.5	43	4.9
10-24	27	3.1	43	4.9	60	6.8
10-32	31	3.5	49	5.5	68	7.7
1/4-20	66	7.6	8	10.9	12	16.3
1/4-28	76	8.6				
5/16-18	11	15.0	17	23.1	25	34.0
5/16-24	12	16.3	19	25.8	27	34.0
3/8-16	20	27.2	30	40.8	45	61.2
3/8-24	23	31.3	35	47.6	50	68.0
7/16-14	30	40.8	50	68.0	70	95.2
7/16-20	35	47.6	55	74.8	80	108.8
1/2-13	50	68.0	75	102.0	110	149.6
1/2-20	55	74.8	90	122.4	120	163.2
9/16-12	65	88.4	110	149.6	150	204.0
9/16-18	75	102.0	120	163.2	170	231.2
5/8-11	90	122.4	150	204.0	220	299.2
5/8-18	100	136	180	244.8	240	326.4
3/4-10	160	217.6	260	353.6	386	525.0
3/4-16	180	244.8	300	408.0	420	571.2
7/8-9	140	190.4	400	544.0	600	816.0
7/8-14	155	210.8	440	598.4	660	897.6
1-8	220	299.2	580	788.8	900	1,244.0
1-12	240	326.4	640	870.4	1,000	1,360.0

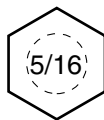
NOTES

- These torque values are to be used for all hardware excluding: locknuts, self-tapping screws, thread forming screws, sheet metal screws and socket head setscrews.
- Recommended seating torque values for locknuts:
 - for prevailing torque locknuts - use 65% of grade 5 torques.
 - for flange whizlock nuts and screws - use 135% of grade 5 torques.
- Unless otherwise noted on assembly drawings, all torque values must meet this specification.

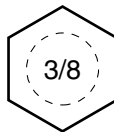
Wrench & Fastener Size Guide



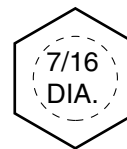
1/4" Bolt or Nut
Wrench—7/16"



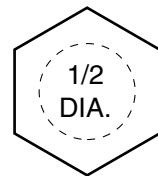
5/16" Bolt or Nut
Wrench—1/2"



3/8" Bolt or Nut
Wrench—9/16"



7/16" Bolt or Nut
Wrench (Bolt)—5/8"
Wrench (Nut)—11/16"



1/2" Bolt or Nut
Wrench—3/4"



Simplicity[®]

MANUFACTURING, INC.
500 N Spring Street / PO Box 997
Port Washington, WI 53074-0997

www.simplicitymfg.com

© Copyright 2004 Simplicity Manufacturing, Inc.
All Rights Reserved. Printed in USA.