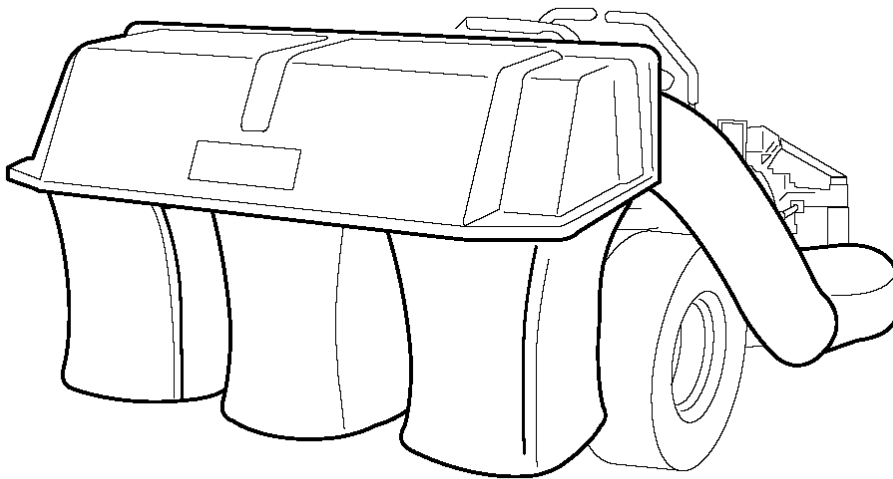


Parts Manual for

SNAPPER®

CLEAN SWEEP TRIPLE CATCHER

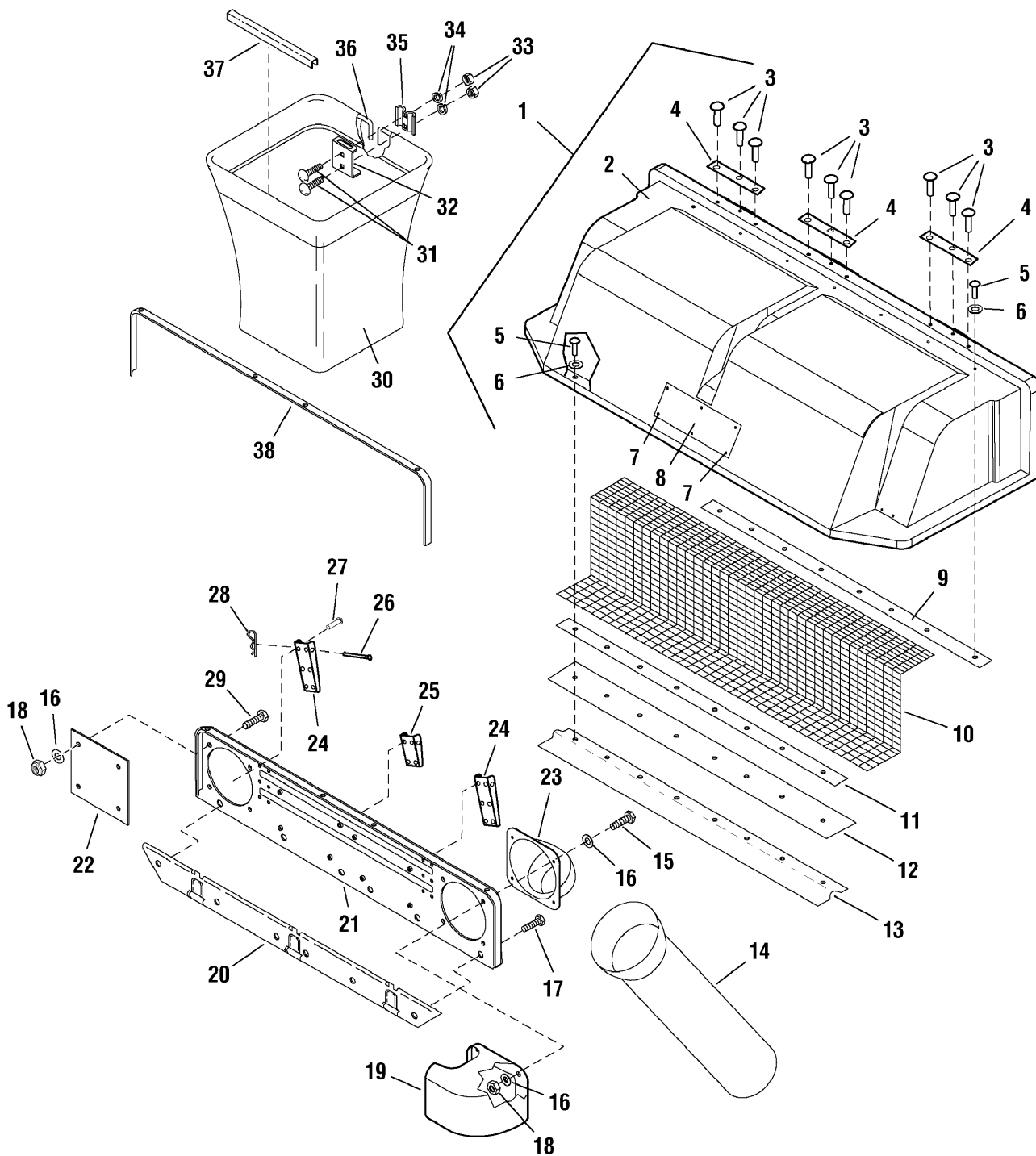
MODEL
1694499



SNAPPER® McDonough, GA, 30253 U.S.A.

PAGE	GROUP
4	Cover & Bag Group -Triple
8	Front Weight Carrier Group
10	Mount Group
14	Tubes & Support Group - Triple

Cover & Bag Group -Triple

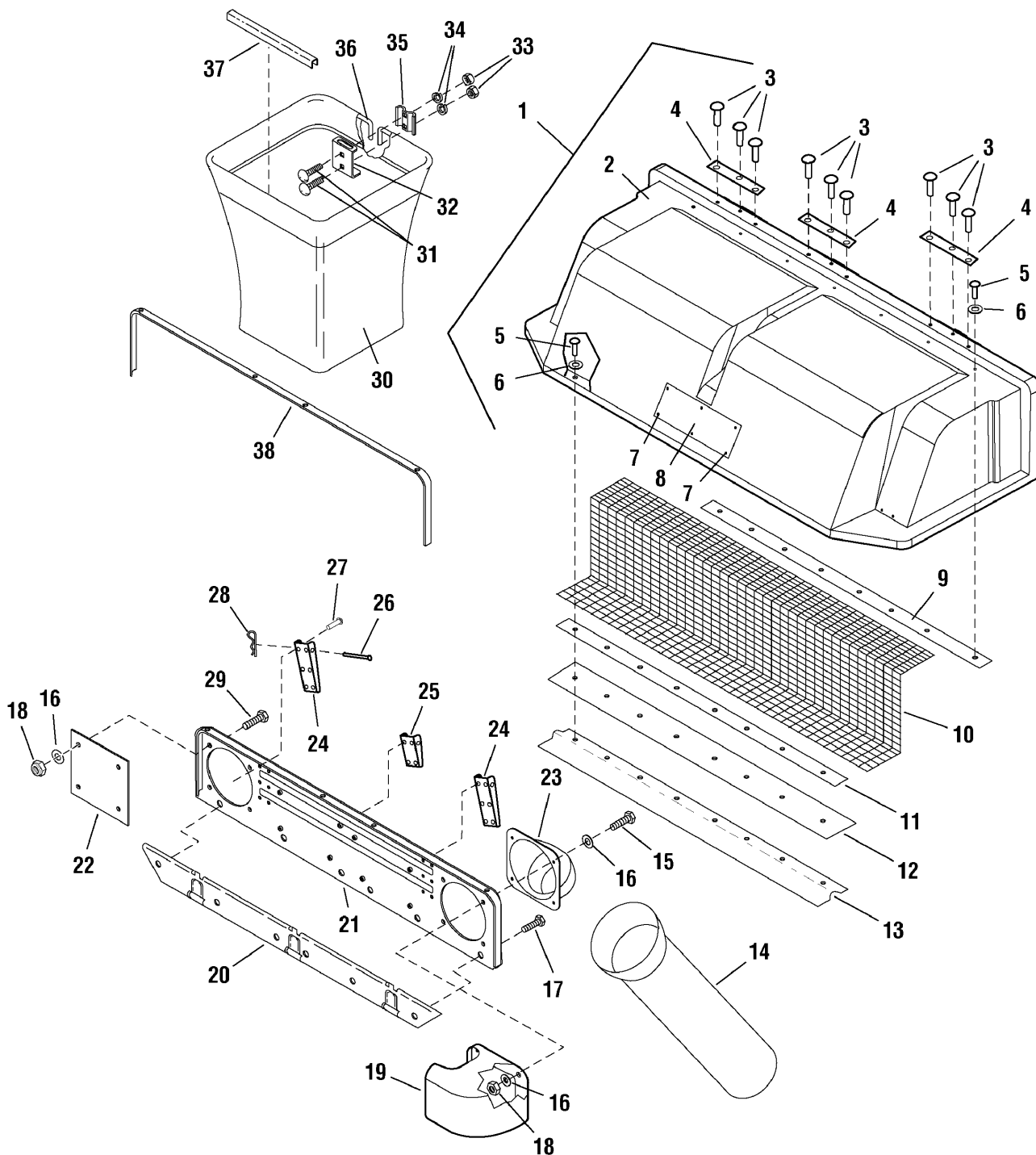


Cover & Bag Group -Triple

Item	Part No	Qty	Description	Note
1	1717025	1	COVER & SCREEN ASSEMBLY, Grass Collector Complete (Incl. Ref. Nos. 2, 3, 4, 5, 6, 7, 8, 9, 10, 11, 12 & 13)	
2	1717026	1	COVER, Grass Catcher Black Plastic	
3	1960241	9	RIVET, Pop, .25OD .500L Steal,Steal Stem .50HD Black	
4	1717067	3	PLATE & TUBE ASSEMBLY, Hinge	
5	2825160	25	RIVET, Pop, .188D .527L Steal,Steal Stem .37HD Dia.	
6	1910531	16	WASHER, Rivet, .188 (0.20ID x 0.50OD x .05TH) Black	
7	1667248	6	CLIP, Canoe .437LG .375DIA	
8	1704405	1	DECAL, WARNING Do Not Open Cover	
9	1716970	1	CLAMP, Screen 16GA 40.0LG	
10	1717041	1	SCREEN, Black Poly, 19.5 x 45.0	
11	1717524	1	CLAMP, Seal, .060THK .75WD 48.00LG	
12	1716968	1	SEAL, Black Rubber, .075 x 3.00 x 48.0	
13	1716972	1	ANGLE, Screen, 14GA 48"LG	
14	1719807	1	CHUTE, Grass Collector Upper, 5.76ID 21.7L Scribed	
15	1921333	4	CAPSCREW, Hex Head, 5/16-18 x 1 G5 Black	
16	1919326	12	WASHER, 5/16 (0.34ID x 0.75OD x .06THK) Black	
17	1925003	3	CAPSCREW, Hex Washer Head Taptite, 1/4-20 x 1/2 Black	
18	1919438	8	NUT, Hex Lock ESNA Light, 5/16-18NC-3B Black	
19	1717039	1	DEFLECTOR, Black Plastic Grass Collector	
20	1716973	1	CHANNEL & BRACKET ASSEMBLY, Support	
21	1716966	1	PLATE & BRACES ASSEMBLY, 3 Bag Grass Catcher	
22	1725969	1	COVER, Inlet, .125THK 8.12 x 8.12 Plexiglass	
23	1717038	1	DUCT, Inlet Black Plastic Grass Collector	
24	1720875	2	BRACKET, Hinge 3 Bag, 12GA 6.00LG with Point	
25	1720945	1	BRACKET, Hinge 3 Bag, 12GA 2.75LG	
26	1672344	3	PIN, Round Head Drilled, 3/8 x 2-3/4 Black	
27	1928707	16	RIVET, Pop, .188D .277L AL, AL Stem .37HD Black	
28	1960074	3	CLIP, Hair Pin, .093DIA Spring Wire 1.625LG Black	
29	1921332	4	CAPSCREW, Hex Head, 5/16-18 x 3/4 G5 Black	
30	1703764	1	BAG, Grass, 15.4 x 16 x 22.5 White Poly Cloth	
31	1931333	2	CARRIAGE BOLT, 5/16-18 x 3/4 G5 Black	
32	1703807	1	HANGER, Grass Bag Hoop	
33	1917372	2	NUT, Hex 5/16-18 NC-2B Black	
34	1917356	2	LOCKWASHER, Spring 3/8 Black	
35	1672023	1	CLAMP, Wire Diameter 1/2 (2), .344 Holes (3)	
36	1703855	1	HOOP, 1/2 ROD 16.12 x 16.75	
37	1675707	1	EDGING, 13.50LG PVC Tube White	

Footnotes:

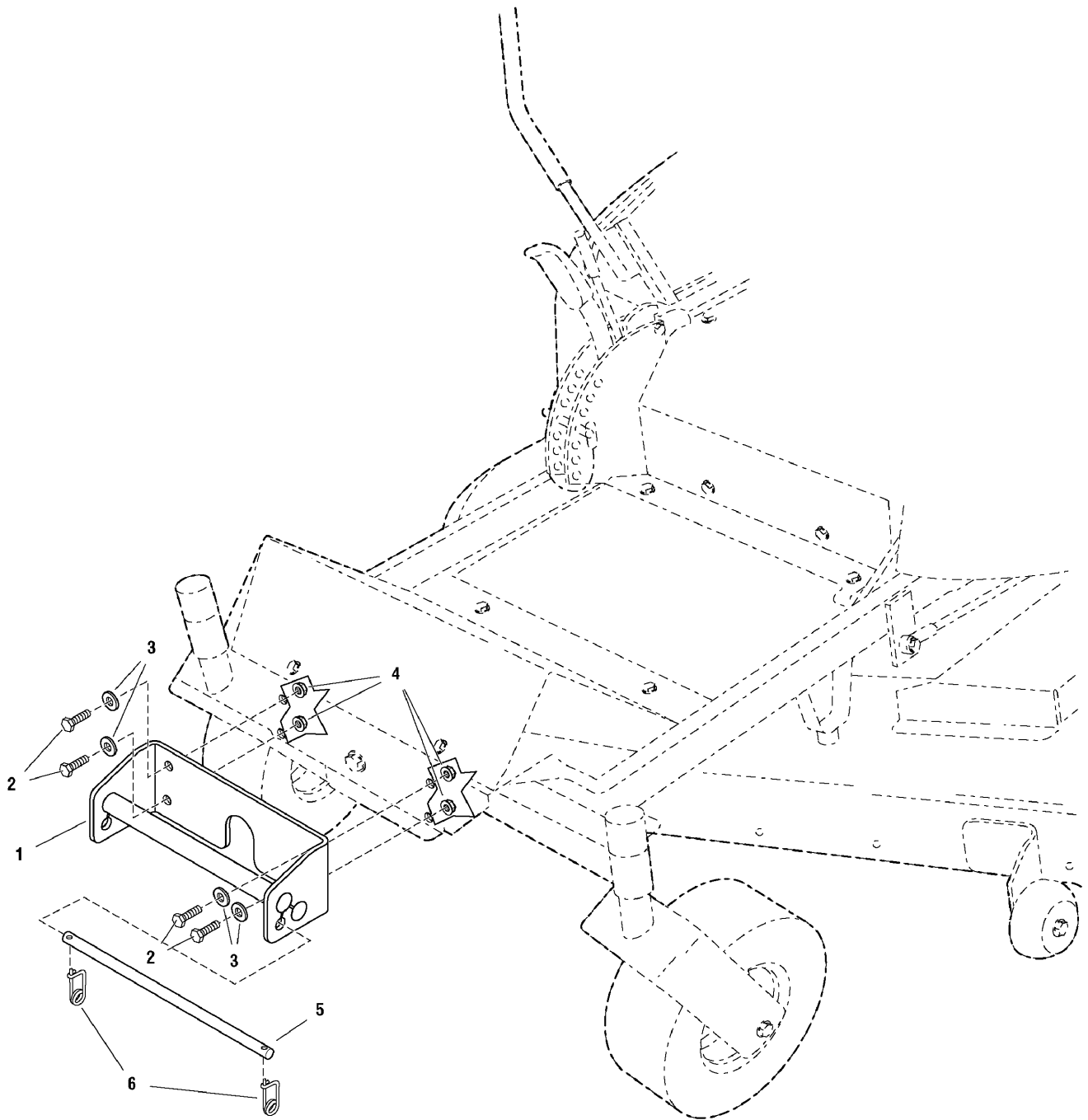
Cover & Bag Group -Triple



Cover & Bag Group -Triple

Item	Part No	Qty	Description	Note
38	1717082	1	SEAL, Black Plastic 73"	

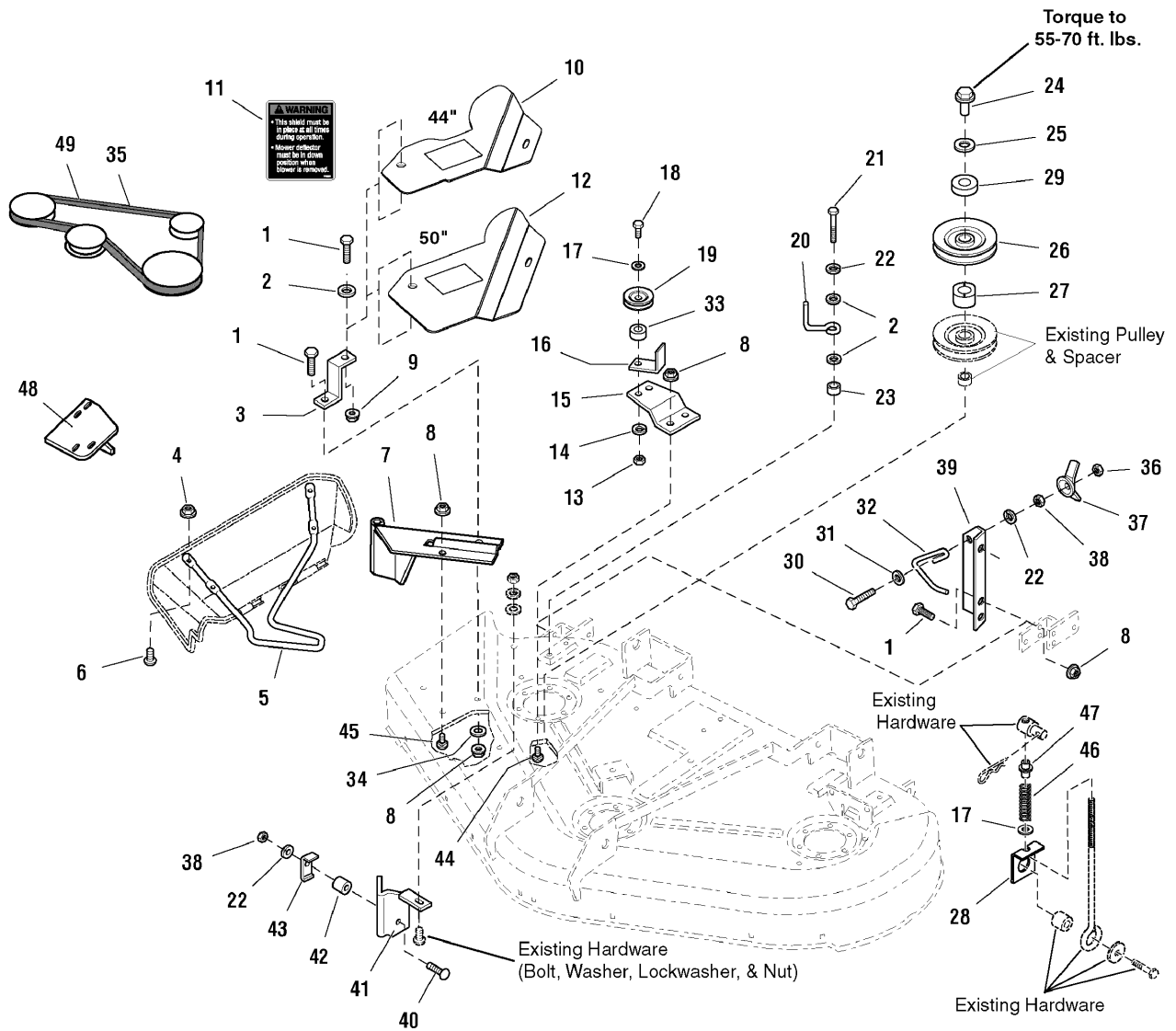
Footnotes:



Front Weight Carrier Group

Item	Part No	Qty	Description	Note
1	5049082	1	HOLDER ASSEMBL, Weight	
2	1921333	4	CAPSCREW, Hex Head, 5/16-18 x 1 G5 Black	
3	1919326	4	WASHER, 5/16 (0.34ID x 0.75OD x .06THK) Black	
4	1927557	4	NUT, Hex Flange Whiz Lock, 5/16-18 Large Black	
5	5049143	1	ROD, Retaining, 1/2 x 13-3/4LG	
6	2176012	2	RETAINER, Pin, Spring	

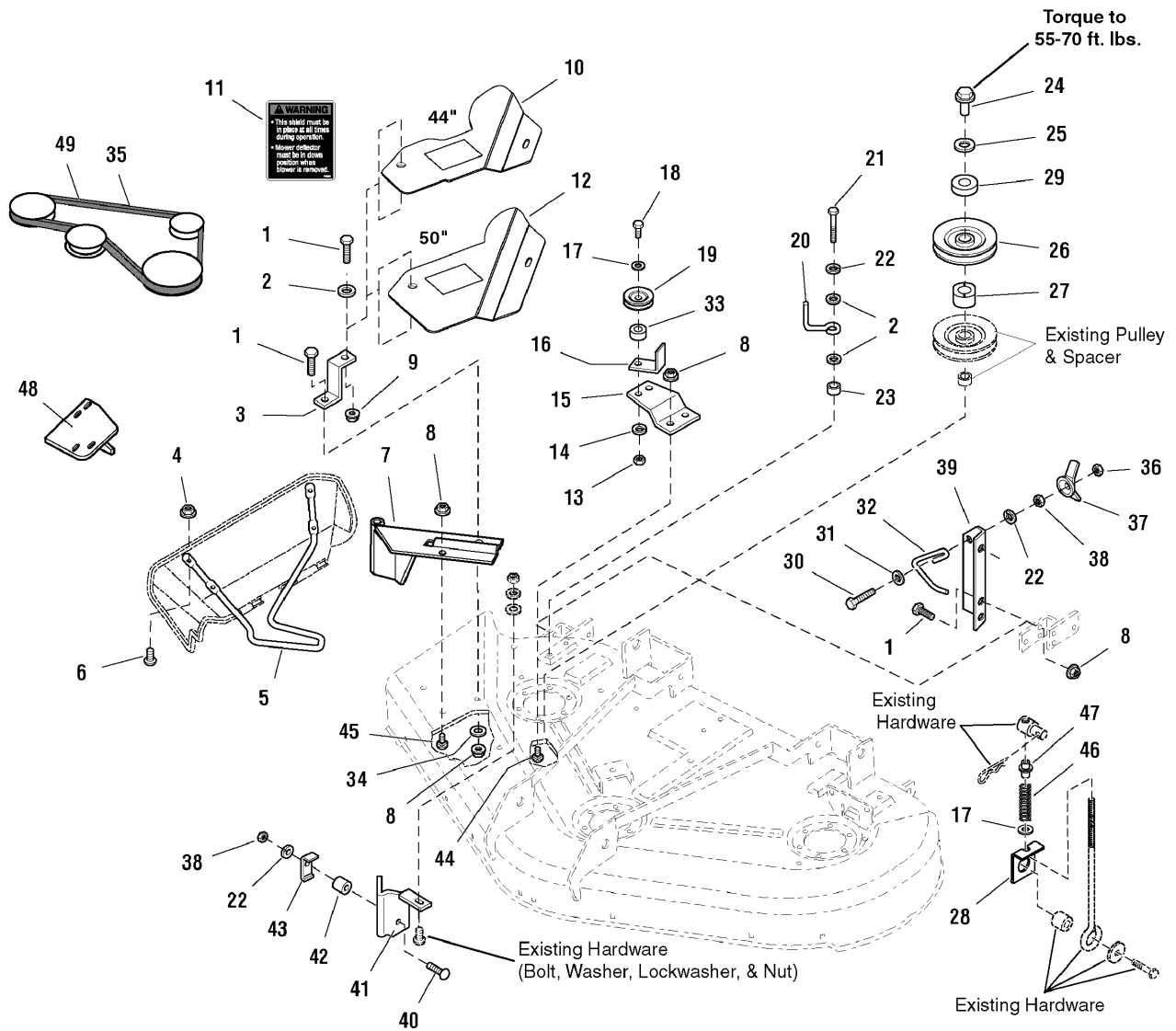
Footnotes:



Mount Group

Item	Part No	Qty	Description	Note
1	1921333	4	CAPSCREW, Hex Head, 5/16-18 x 1 G5 Black	
2	1919326	3	WASHER, 5/16 (0.34ID x 0.75OD x .06THK) Black	
3	1718304	1	SUPPORT, Belt Cover 10GA 1.0WD 3.0LG	
4	1933896	4	NUT, Hex Lock, 10-24 with Nylon Insert NC3B Black	
5	1718295	1	ROD, .375DIA 22.0LG	
6	1960404	4	SCREW, Truss Head Phillips, #10-24 x 3/4 Black	
7	1722546	1	PIVOT & BRACKETS ASSEMBLY, 38, 44 & 50"	
8	1931277	6	NUT, Hex Flange Whiz Lock, 5/16-18 Small Black	
9	1919438	1	NUT, Hex Lock ESNA Light, 5/16-18NC-3B Black	
10	5049171	1	COVER, Belt 44" 12GA	
11	1717291	2	DECAL, WARNING Sheild & Mower Deflector	
12	5049170	1	COVER, Belt 50" 12GA	
13	1916950	1	NUT, Hex 3/8-16 NC-2B Black	
14	1916965	1	LOCKWASHER, Spring 3/8	
15	1704768	1	BRACKET, Z .164TH 5.88WD 3.21LG	
16	1724373	1	BRACKET, L 12GA 1.24WD 2.24LG 2.28LG	
17	1924940	1	WASHER, 3/8 (0.41ID x 0.87OD x .08THK) Black	
18	1923701	1	CAPSCREW, Hex Head, 3/8-16 x 2 G5 Black	
19	1714817	1	PULLEY, Idler, 2.75OD 0.380ID 0.50W	
20	2172845	1	STOP, Belt, .188WIRE 1.750,2.250 Black	
21	1921221	1	CAPSCREW, Hex Head, 5/16-18 x 1-1/2 G5 Black	
22	1917356	1	LOCKWASHER, Spring 5/16 Black	
23	1710703	1	SPACER, 0.328ID x 0.499OD x 0.625LG Powdered Metal	
24	1713523	1	NUT, Sleeve, 9/16-18 x 3/4INT x 1.34LG Black	
25	1603592	1	WASHER, Bellville, 0.88ID x 1.75OD x .08TH Black	
26	1709941	1	PULLEY, 04.30OD 1.000ID 0.579 Groove 9GA	
27	1713623	1	HUB, .79ID x 1.5OD x .73LG Metafusion	
28	5049145	1	PLATE, Spring Support 10GA	
29	5049088	1	SPACER, 0.812ID x 1.75OD x 0.50LG	
30	1960318	1	CAPSCREW, Hex Head, 5/16-18 x 2-1/2 G5 Flat Black	
31	1919381	1	WASHER, 5/16 (0.34ID x 1.00OD x .13THK) Black	
32	1705064	1	SPRING, Latch, .125WIRE 4.3LG Black	
33	2108717	1	SPACER, 0.390ID x 0.625OD x .265LG	
34	1922755	1	WASHER, 3/8 (0.41ID x 1.00OD x .13THK) Black	
35	1705142	1	V-BELT, 3L, 44" Mower Deck	
36	1923362	1	NUT Hex Centerlock, 5/16-18 Black	
37	1679163	1	NUT & CUP ASSEMBLY, Wing, 5/16-18 E-Coat	

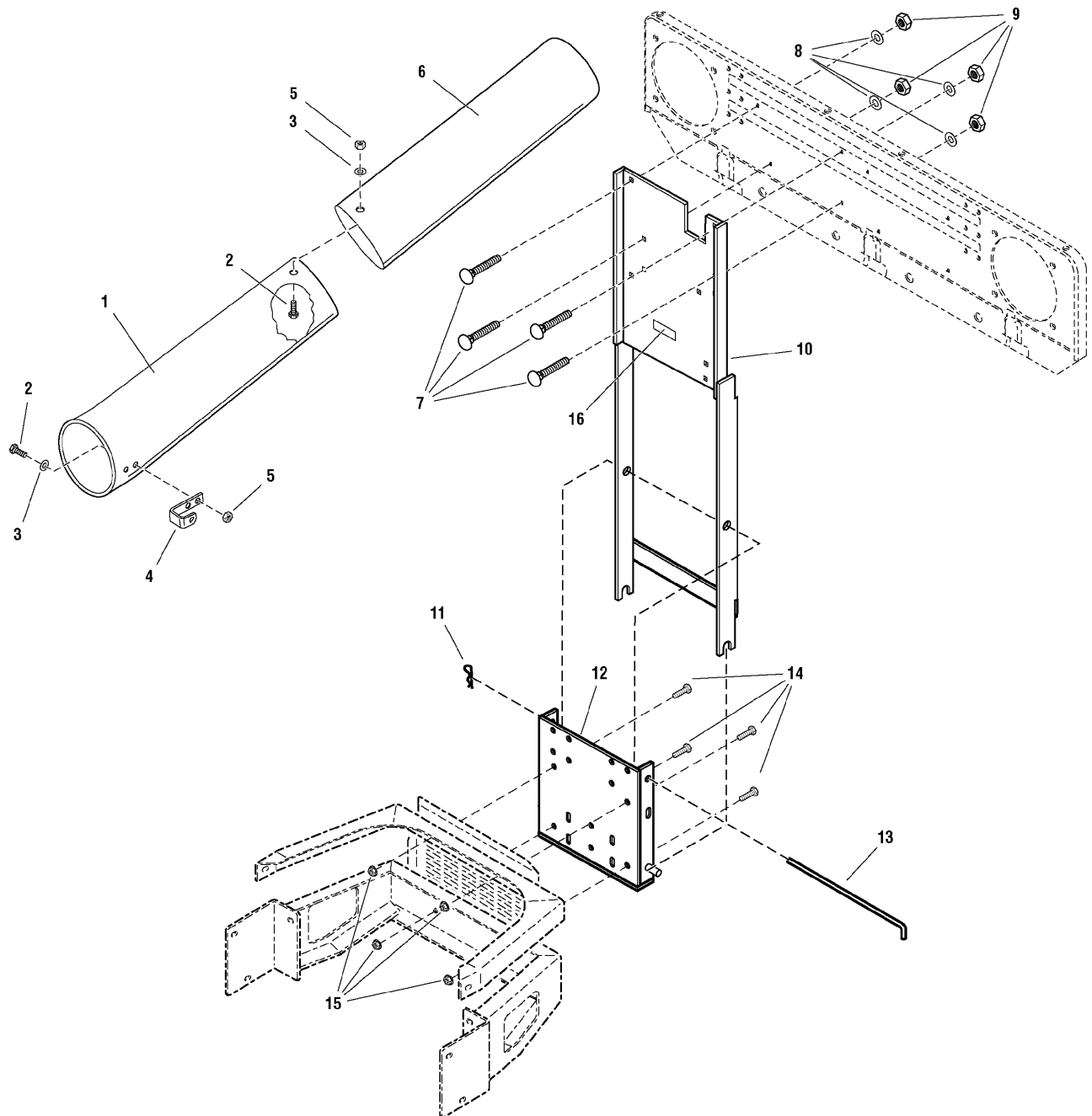
Footnotes:



Mount Group

Item	Part No	Qty	Description	Note
38	1917372	2	NUT,Hex, 5/16-18 NC-2B Black	
39	1704982	1	PLATE, Anchor	
40	1960223	1	CARRIAGE BOLT, 5/16-18 x 1-1/4 G5 Black	
41	1659867	1	BRACKET ASSEMBLY, Cutoff, 44"	
42	1666294	1	SPACER, 0.385ID x 0.668OD x 0.455LG Powdered Metal Black	
43	1705308	1	BRACKET, L 12GA 1.00WD 1.98LG 0.62LG	
44	1923325	2	CAPSCREW, Hex Head, 5/16-18 x 7/8 G5 Black	
45	1931333	1	CARRIAGE BOLT, 5/16-18 x 3/4 G5 Black	
46	5049159	1	SPRING, Compression, 0.720OD x 2.25 LG .085 Wire	
47	5049144	1	SPACER, 0.390ID x 0.75OD x 1.13 LG YELLOW	
48	1704983	1	BRACKET & PLATE ASSEMBLY, Clamp	
49	1707956	1	V-BELT, 3L, 50" Mower Deck	

Footnotes:



Tubes & Support Group - Triple

Item	Part No	Qty	Description	Note
1	5049152	1	CHUTE, Grass Collector Lower, Black Poly	
2	1960404	5	SCREW, Truss Head Phillips, #10, 24 x 3/4 Black	
3	1960096	5	WASHER, 3/16 (0.19ID x 0.75OD x .06THK) Black	
4	1705063	1	CLIP, Spring, 1.40 x 1.48 Open 3.50LG 0.88WD	
5	1933896	5	NUT, Hex Lock, 10-24 with Nylon Insert NC3B Black	
6	5049151	1	CHUTE, Grass Collector Middle, Black Poly	
7	1931335	4	CARRIAGE BOLT, 5/16-18 x 1 G5 Black	
8	1917356	4	LOCKWASHER, Spring, 5/16 Black	
9	1917372	4	NUT, Hex 5/16-18 NC-2B Black	
10	1723437	1	SUPPORT ASSEMBLY, Triple Collector	
11	1960033	1	CLIP, Hair Pin, .125DIA Spring Wire 2.562LG Black	
12	1726968	1	PLATE & PINS ASSEMBLY, Hitch Triple Collector Black	
13	1717085	1	ROD, Hitch, .625DIA 16.5LG	
14	1921176	4	CAPSCREW, Hex Head, 1/2-13 x 1-1/4 G5 Black	
15	1960668	4	NUT, Hex Flange Whiz Lock, 1/2-13 Black	
16	*	1	DECAL, ID Plate	<i>* Not a serviceable part.</i>

Footnotes:

Parts Manual for

SNAPPER®

CLEAN SWEEP TRIPLE CATCHER

IT IS THE POLICY OF SNAPPER TO IMPROVE ITS PRODUCTS WHENEVER IT IS POSSIBLE AND PRACTICAL TO DO SO. WE RESERVE THE RIGHT TO MAKE CHANGES OR ADD IMPROVEMENTS AT ANY TIME WITHOUT INCURRING ANY OBLIGATION TO MAKE SUCH CHANGES ON PRODUCTS MANUFACTURED PREVIOUSLY.

SNAPPER® McDonough, GA, 30253 U.S.A.