

INSTALLATION INSTRUCTIONS

STEEL DUMP CART
MFG. No. 1692100
FOR FRONT-CUT RIDING MOWER

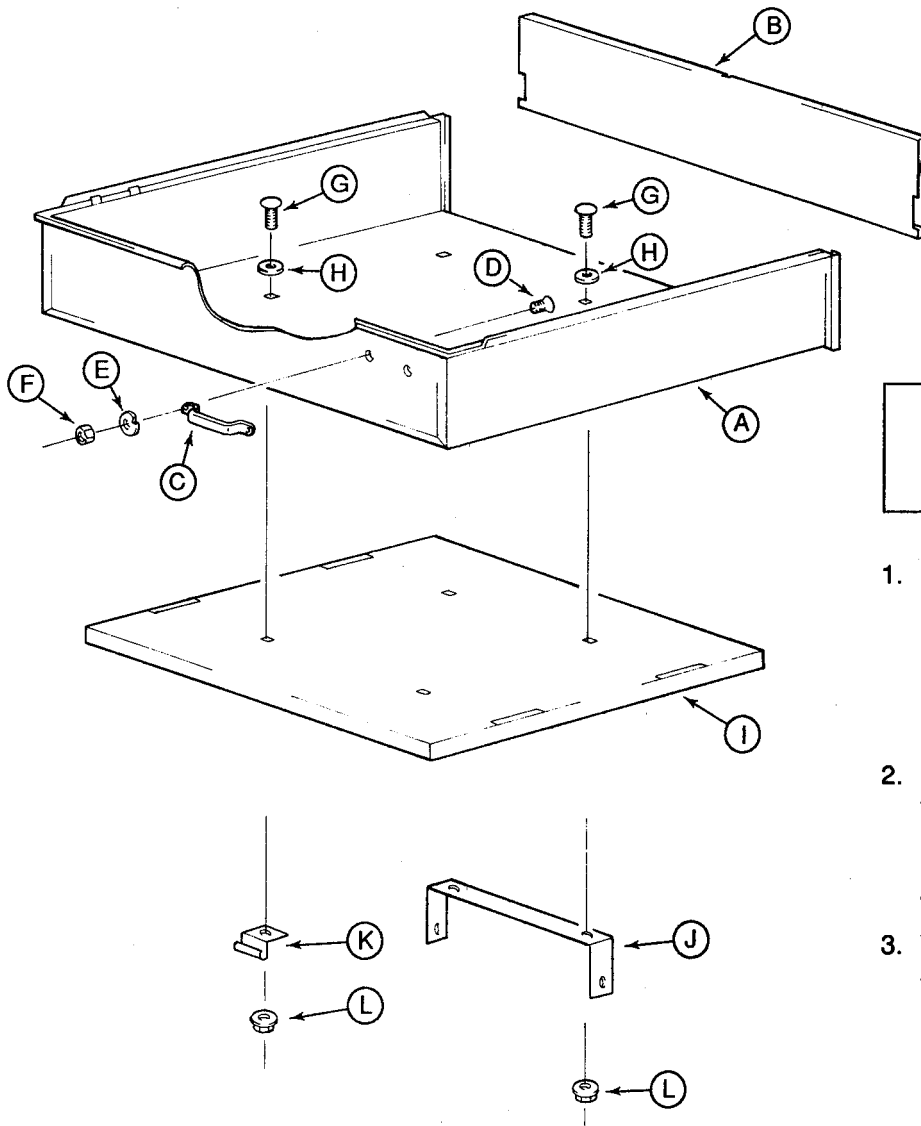


Figure 1

KIT PARTS

Ref.	Description	Qty
A	Steel Dump Cart	1
B	Tailgate	1
C	Lift Handle	1
D	Capscrew, 1/4-20x1/2	2
E	Lockwasher, 1/4	2
F	Nut, 1/4-20	2
G	Carriage Bolt, 5/16-18x1	4
H	Flatwasher, 3/8	4

Existing Parts

I	Platform	1
J	Pivot Bracket	1
K	Clip	2
L	Locknut, 5/16-18	4

WARNING
Do Not Carry Passengers!

1. Install the dump cart (A, figure 1) to the platform (I) using four new 5/16-18x1 carriage bolts (G), four new 3/8 flatwashers (H), and four existing 5/16-18 locknuts (L). Install the carriage bolts from the top as shown. Discard the existing 5/16-18x3/4 carriage bolts.
2. When installing the new carriage bolts, the rear two bolts attach the platform to two clips (K) which hold the latch rod. Be sure that the latch rod with spring is installed in its original position so that it will work properly.
3. The tailgate (B, figure 2) lifts out for easy removal or swings down for unloading. To swing the tailgate down, lift the tailgate up so that the slots (M) are just above the track (N) and then swing down.

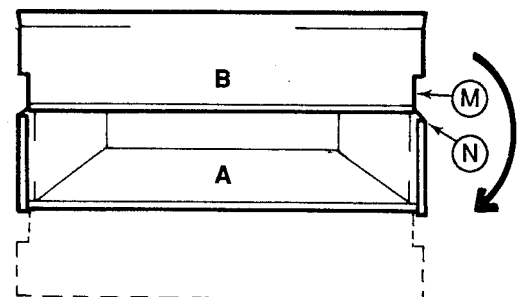


Figure 2

