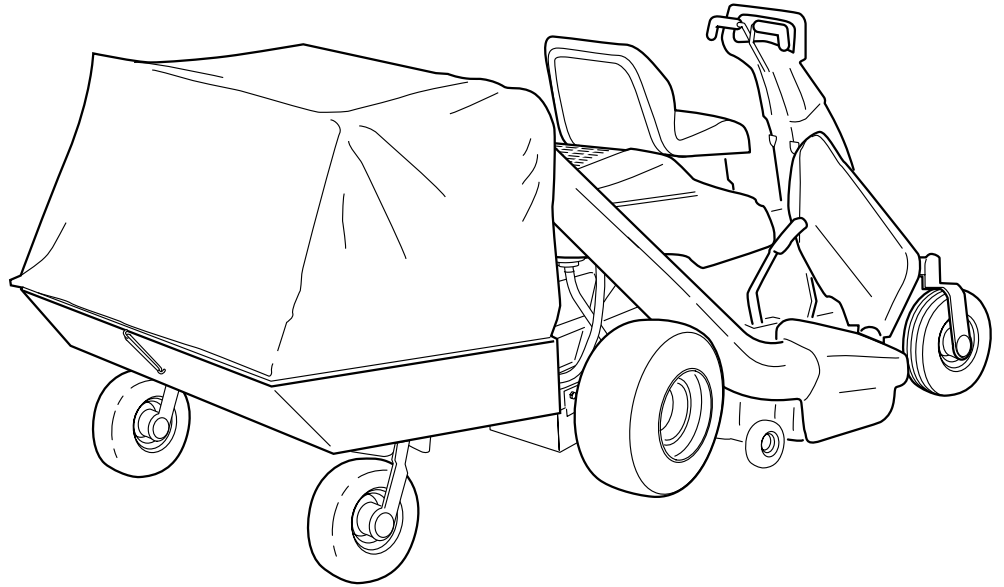


**Simplicity**

# Parts Manual



**AGCO ALLIS**



## ZT SERIES ATTACHMENTS & ACCESSORIES

<b>Mfg. No.</b>	<b>Description</b>
1691872	Turbo Quad Bagger
1692883	38" Grass Mulcher Kit
1692884	44" Grass Mulcher Kit
1692885	50" Grass Mulcher Kit
1693106	44" Turbo Grass Collector
1693107	Quad Bagger Dump Cart
1693108	Wide Body Dump Cart
1693150	38" Clean Sweep Twin Bag Grass Catcher
1693151	38", 44" & 50" Turbo Twin Bag Catcher
1693225	38" Turbo Grass Collector
1693228	50" Turbo Grass Collector
1693427	Arm Rest Accessory

**ATTACHMENTS & ACCESSORIES**

1691872 - Turbo Quad Bagger .....2  
1692883 - 38” Grass Mulcher Kit .....4  
1692884 - 44” Grass Mulcher Kit .....6  
1692885 - 50” Grass Mulcher Kit .....8  
1693106 - 44” Turbo Grass Collector  
    Blower Group .....10  
    Mounting Group .....12  
1693107 - Quad Bagger Dump Cart .....14  
1693108 - Wide Body Dump Cart  
    Cart Group .....16  
    Tube & Hitch Group .....18  
1693150 - 38” Clean Sweep Twin Bag Grass Catcher  
    Adapter, Blade & Tube Group .....20  
    Cover & Bag Group .....22  
    Hitch Group .....24  
1693151 - 38”, 44”, 50” Turbo Twin Bag Catcher  
    Cover & Bag Group .....22  
    Hitch Group .....24  
    Tube Group .....26  
1693225 - 38” Turbo  
    Blower Group .....28  
    Mounting Group .....30  
1693228 - 50” Turbo  
    Blower Group .....32  
    Mounting Group .....34  
1693427 - Arm Rest Accessory .....36

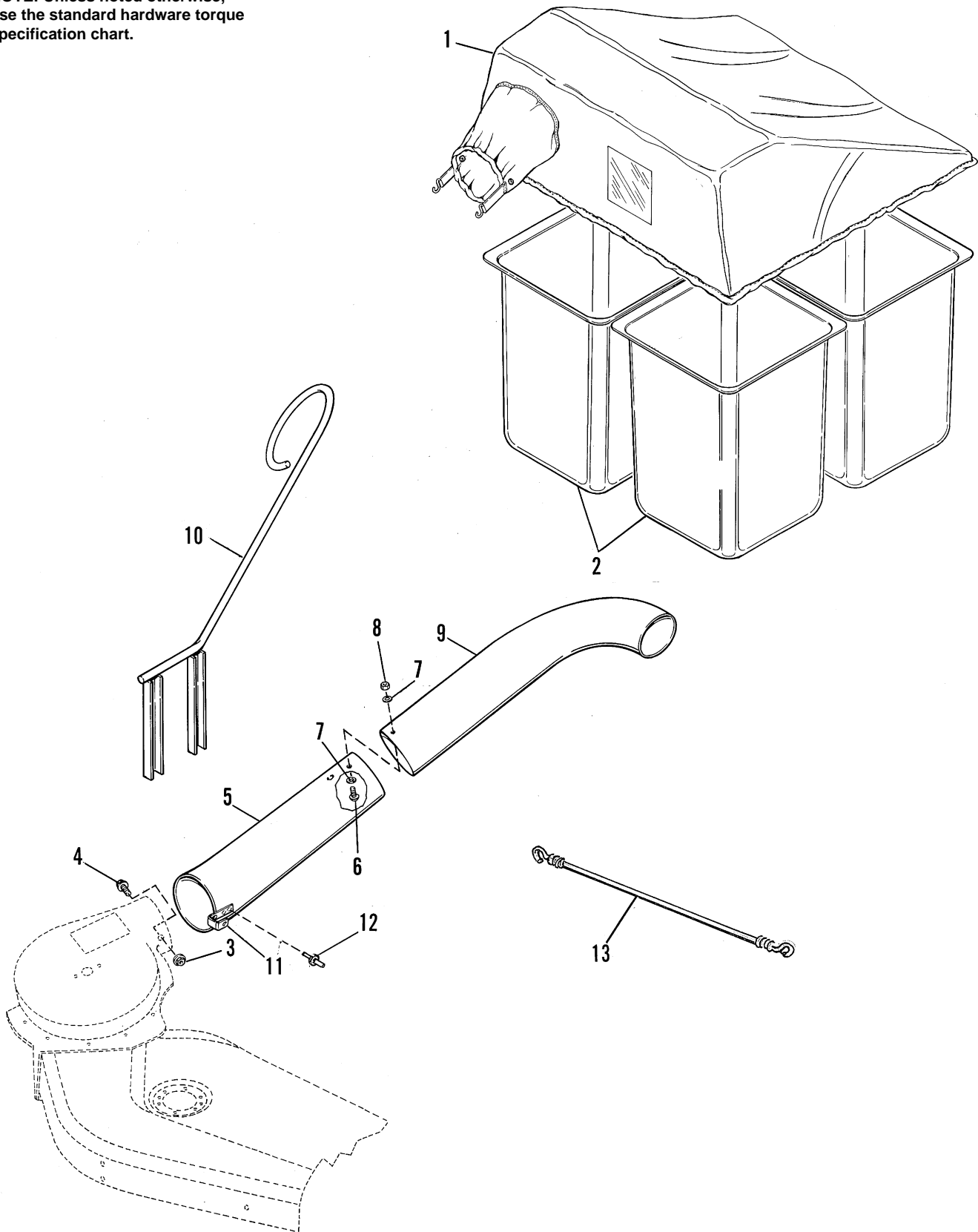
**REFERENCE INFORMATION:**

Part Number Index .....38  
Torque Specification Chart .....Inside Back Cover

# Turbo Quad Bagger - 1691872

A-AT43201A

NOTE: Unless noted otherwise,  
use the standard hardware torque  
specification chart.



The above parts group applies to the following Mfg. Nos.:

1691872, Turbo Quad Bagger

## **Turbo Quad Bagger - 1691872**

---

<b>REF NO.</b>	<b>PART NO.</b>	<b>QTY.</b>	<b>DESCRIPTION</b>
1	1705783	1	HOOD
2	1703378	4	BASKET, Grass Collector
3	1930641	1	NUT, Hex, Flange, Lock, 1/4-20
4	1960252	1	CARRIAGE BOLT, 1/4-20 x 5/8
5	1705112	1	TUBE ASSY., Lower (Incl. Ref. Nos. 11 & 12)
6	1930531	2	SCREW, Truss Hd., #10-32 x 1/2
7	1910531	4	WASHER, Plain, #10
8	1928919	2	NUT, Hex, Washer Assy., #10-32
9	1705779	1	TUBE, Upper
10	1707691	1	SUPPORT, Tube
11	1705063	1	CLIP, Spring
12	1673320	2	RIVET, Pop
13	1705282	1	CORD

### **Footnotes:**

---

**The above parts group applies to the following Mfg. Nos.:**

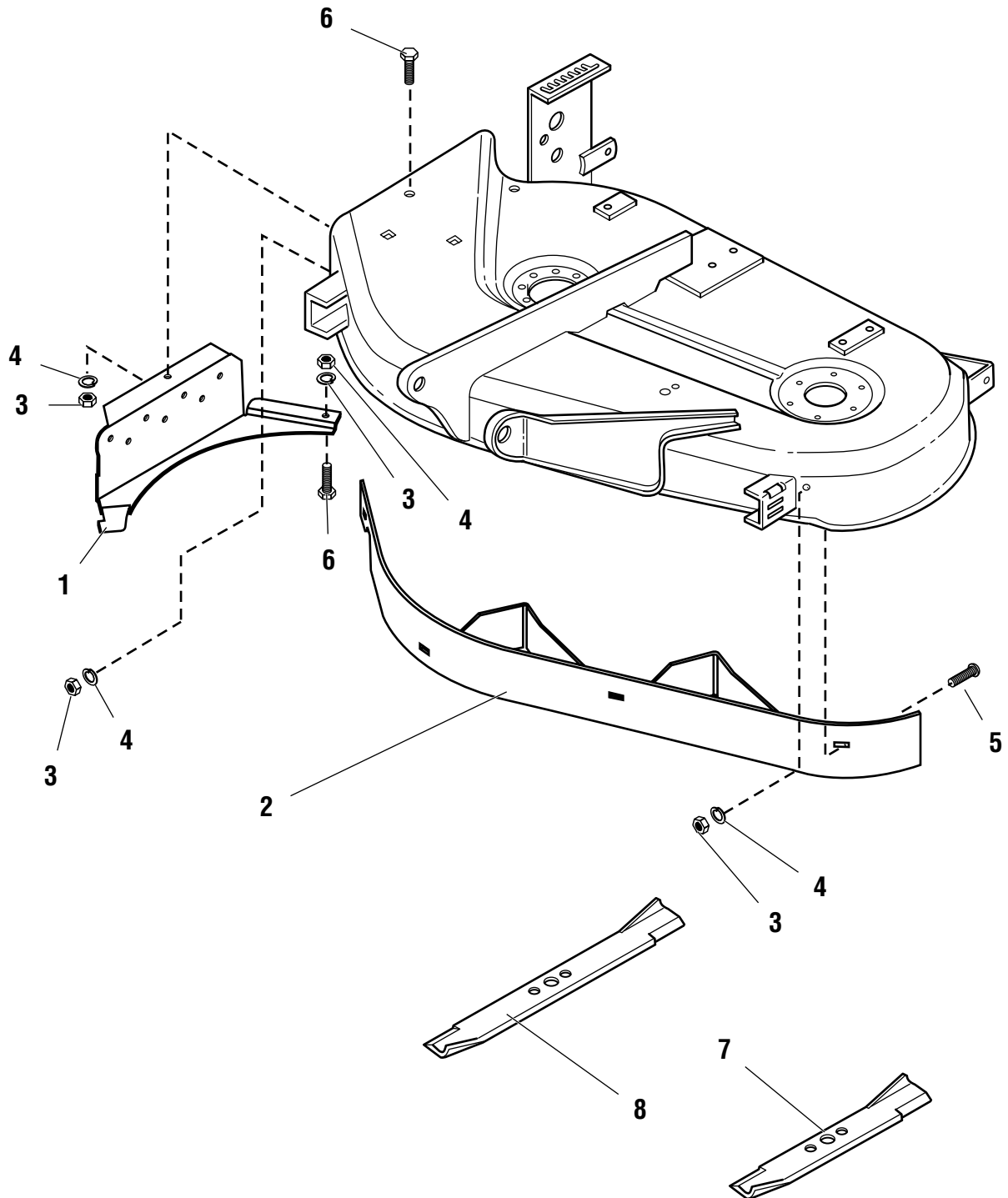
1691872, Turbo Quad Bagger

TP 400-2209-00-AT-SMA

# 38" Grass Mulcher Kit - 1692883

A-AT43202A

NOTE: Unless noted otherwise,  
use the standard hardware torque  
specification chart.



The above parts group applies to the following Mfg. Nos.:

1692883, 38" Grass Mulcher Kit

### **38" Grass Mulcher Kit - 1692883**

---

<b>REF NO.</b>	<b>PART NO.</b>	<b>QTY.</b>	<b>DESCRIPTION</b>
1	1716105	1	PLATE, Discharge Closure, 38"
2	1716147	1	BAFFLE ASSY, 38"
3	1917372	6	NUT, Hex 5/16-18
4	1917356	6	LOCK WASHER, 5/16
5	1931332	4	BOLT, Carriage 5/16-18 x 0.625
6	1925205	2	BOLT, Hex Head 5/16-18 x 0.625
7	1716696	1	BLADE, Mulch 16.12"
8	1716695	1	BLADE, Mulch 22.5"

---

**Footnotes:**

---

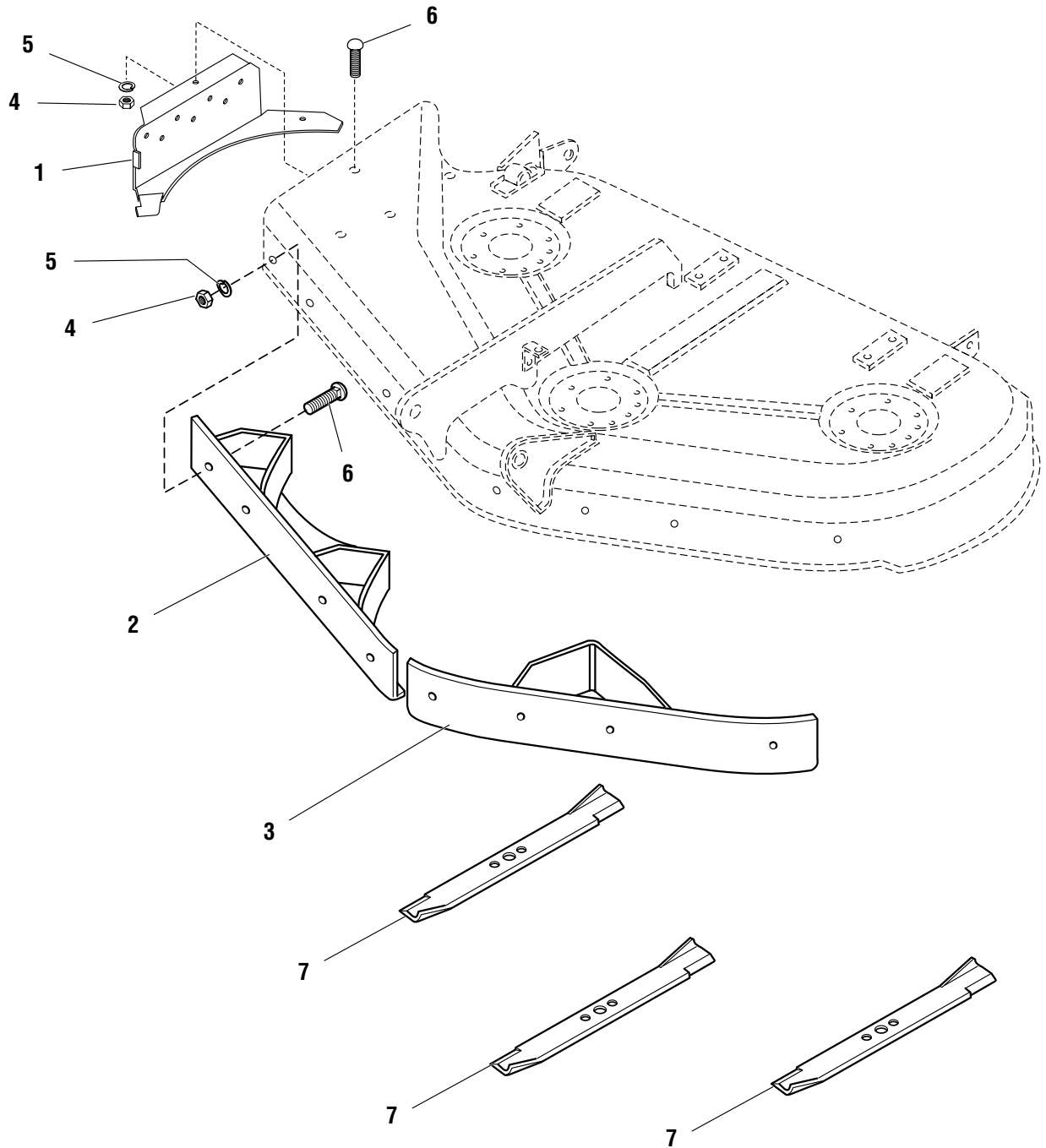
**The above parts group applies to the following Mfg. Nos.:**

1692883, 38" Grass Mulcher Kit Grass      Mulcher Kit

# 44" Grass Mulcher Kit - 1692884

A-AT43203A

NOTE: Unless noted otherwise,  
use the standard hardware torque  
specification chart.



The above parts group applies to the following Mfg. Nos.:

1692884, 44" Grass Mulcher Kit

**44" Grass Mulcher Kit - 1692884**

---

<b>REF NO.</b>	<b>PART NO.</b>	<b>QTY.</b>	<b>DESCRIPTION</b>
1	1715811	1	PLATE, Discharge Closure
2	1716149	1	BAFFLE Assembly, RH 44"
3	1716148	1	BAFFLE Assembly, LH 44"
4	1917372	10	NUT, Hex 5/16-18
5	1917356	10	LOCK WASHER, 5/16
6	1931332	10	BOLT, Carriage 5/16-18 x 0.625
7	1716696	3	BLADE, Mulch for 44"

---

**Footnotes:**

---

**The above parts group applies to the following Mfg. Nos.:**

1692884, 44" Grass Mulcher Kit

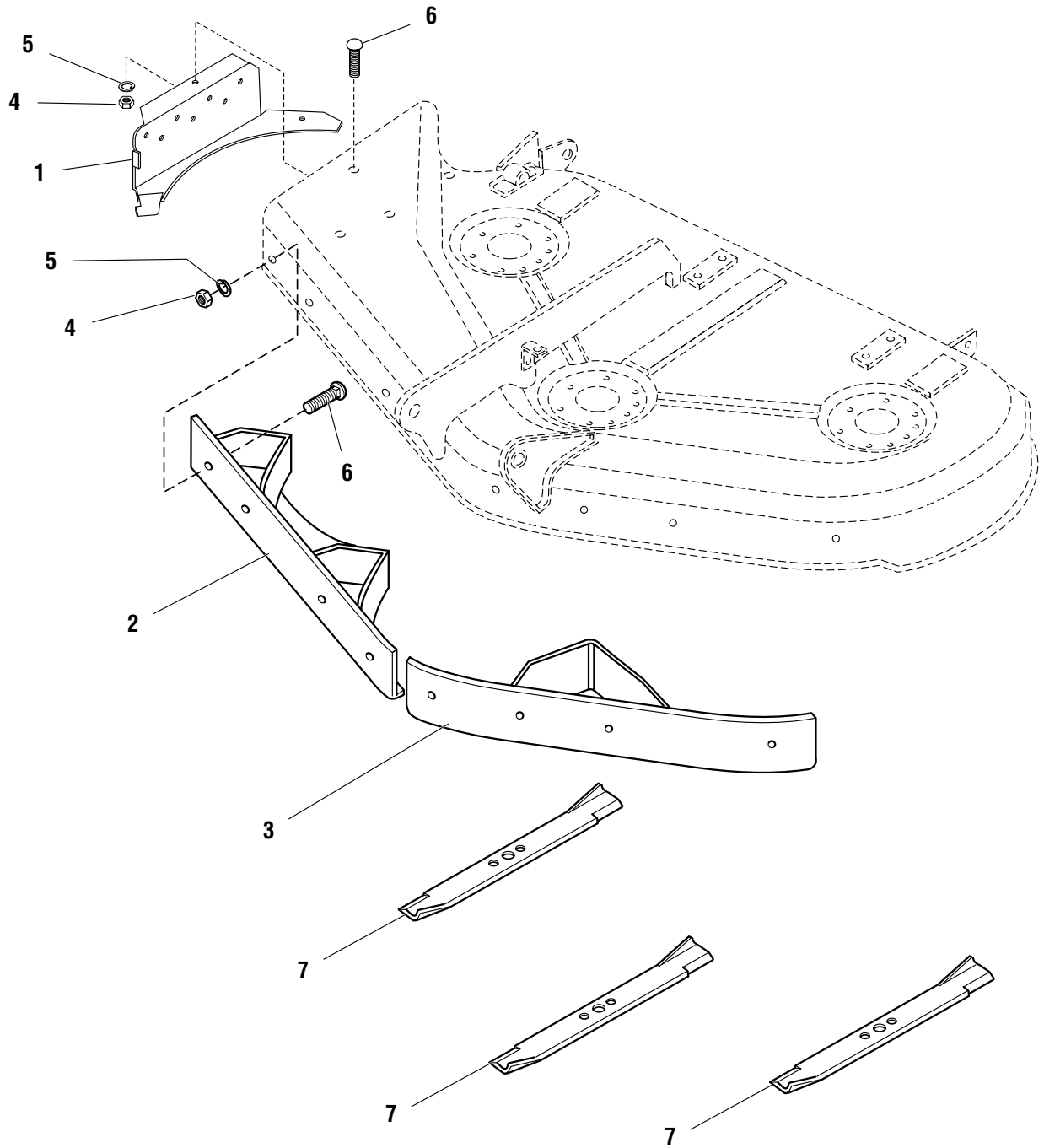
TP 400-2209-00-AT-SMA



# 50" Grass Mulcher Kit - 1692885

A-AT43204A

NOTE: Unless noted otherwise,  
use the standard hardware torque  
specification chart.



The above parts group applies to the following Mfg. Nos.:

1692885, 50" Grass Mulcher Kit

**50" Grass Mulcher Kit - 1692885**

---

<b>REF NO.</b>	<b>PART NO.</b>	<b>QTY.</b>	<b>DESCRIPTION</b>
1	1715811	1	PLATE, Discharge Closure
2	1716151	1	BAFFLE Assembly, RH 50"
3	1716150	1	BAFFLE Assembly, LH 50"
4	1917372	10	NUT, Hex 5/16-18
5	1917356	10	LOCK WASHER, 5/16
6	1931332	10	BOLT, Carriage 5/16-18 x 0.625
7	1716697	3	BLADE, Mulch for 50"

---

**Footnotes:**

---

**The above parts group applies to the following Mfg. Nos.:**

1692885, 50" Grass Mulcher Kit

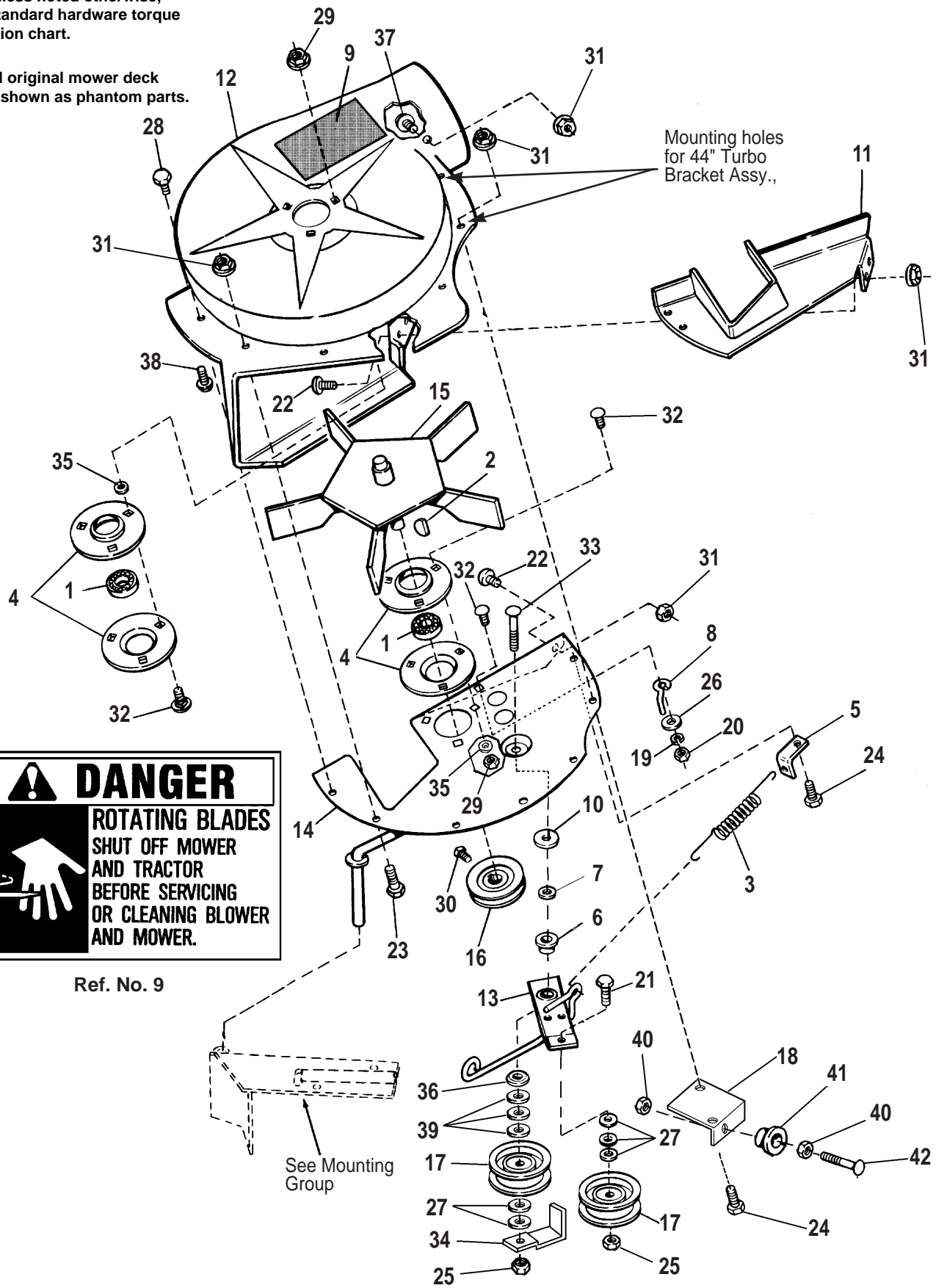
TP 400-2209-00-AT-SMA

# 44" Turbo, Blower Group - 1693106

A-AT43205A

NOTE: Unless noted otherwise, use the standard hardware torque specification chart.

NOTE: All original mower deck parts are shown as phantom parts.



**⚠ DANGER**

**ROTATING BLADES**  
**SHUT OFF MOWER**  
**AND TRACTOR**  
**BEFORE SERVICING**  
**OR CLEANING BLOWER**  
**AND MOWER.**

Ref. No. 9

See Mounting Group

The above parts group applies to the following Mfg. Nos.:

1693106, 44" Turbo

## 44" Turbo, Blower Group - 1693106

REF NO.	PART NO.	QTY.	DESCRIPTION
1	108202	2	BEARING
2	960403	1	KEY, Woodruff, Modified
3	1716853	1	SPRING, Tension
4	1665982	4	BEARING, Retainer
5	1668500	1	BRACKET, Anchor, Spring
6	1714255	1	SPACER, Idler Arm
7	1931942	1	PUSHNUT, 3/8
8	1678435	1	BELT STOP
9	1700259	1	DECAL, Danger, Blower
10	1918431	1	WASHER, Plain
11	1705267	1	PLATE, Cover
12	1705492	1	FAN HOUSING (Incl. Ref. No. 9)
13	1717101	1	LEVER ASSY, Turbo (Incl. Ref. Nos. 6 &10)
14	1706465	1	PLATE ASSY.
15	1706631	1	FAN ASSY., 5 Blade
16	1706634	1	PULLEY, Driven
17	1708030	2	IDLER PULLEY ASSY.
18	1717108	1	BRACKET ASSY., Turbo
19	1917356	1	WASHER, Spring Lock, 5/16
20	1917372	1	NUT, Hex, 5/16
21	1921969	1	CAPSCREW, 3/8-16 X 1-1/2
22	1960472	2	SCREW, Truss Hd., 1/4-18 x 5/8
23	1921959	3	CAPSCREW, Hex, 1/4-20 x 5/8
24	1924009	3	CAPSCREW, Hex Hd., 1/4-20 x 3/4
25	1960339	2	NUT, 3/8-16
26	1924874	1	WASHER, Flat
27	1924940	5	WASHER, Plain
28	1925003	1	CAPSCREW, Hex, Taptite, 1/4-20 x 1/2
29	1927557	6	NUT, Flange, Whizlock, 5/16-18
30	1928691	1	SETSCREW, Hex, Socket Hd., 5/16-18 x 5/16
31	1930641	10	NUT, Hex, Flange Lock, 1/4-20
32	1931333	7	CARRIAGE BOLT, 5/16-18 x 3/4
33	1931355	1	CARRIAGE BOLT, 3/8-16 x 2-1/4
34	1708352	1	BELT STOP
35	1933988	6	PUSH NUT, 3/8
36	1924356	1	WASHER
37	1960252	1	CARRIAGE BOLT, 1/4-20 x 5/8
38	1960256	2	SCREW, Washer. Hd., 1/4-18 x 5/8
39	1922755	3	WASHER
40	1931277	2	NUT, Whizlock, 5/16-18
41	1679164	1	CUP WASHER
42	1960565	1	CARRIAGE BOLT, 5/16-18 x 2-1/2

### Footnotes:

The above parts group applies to the following Mfg. Nos.:

1693106, 44" Turbo

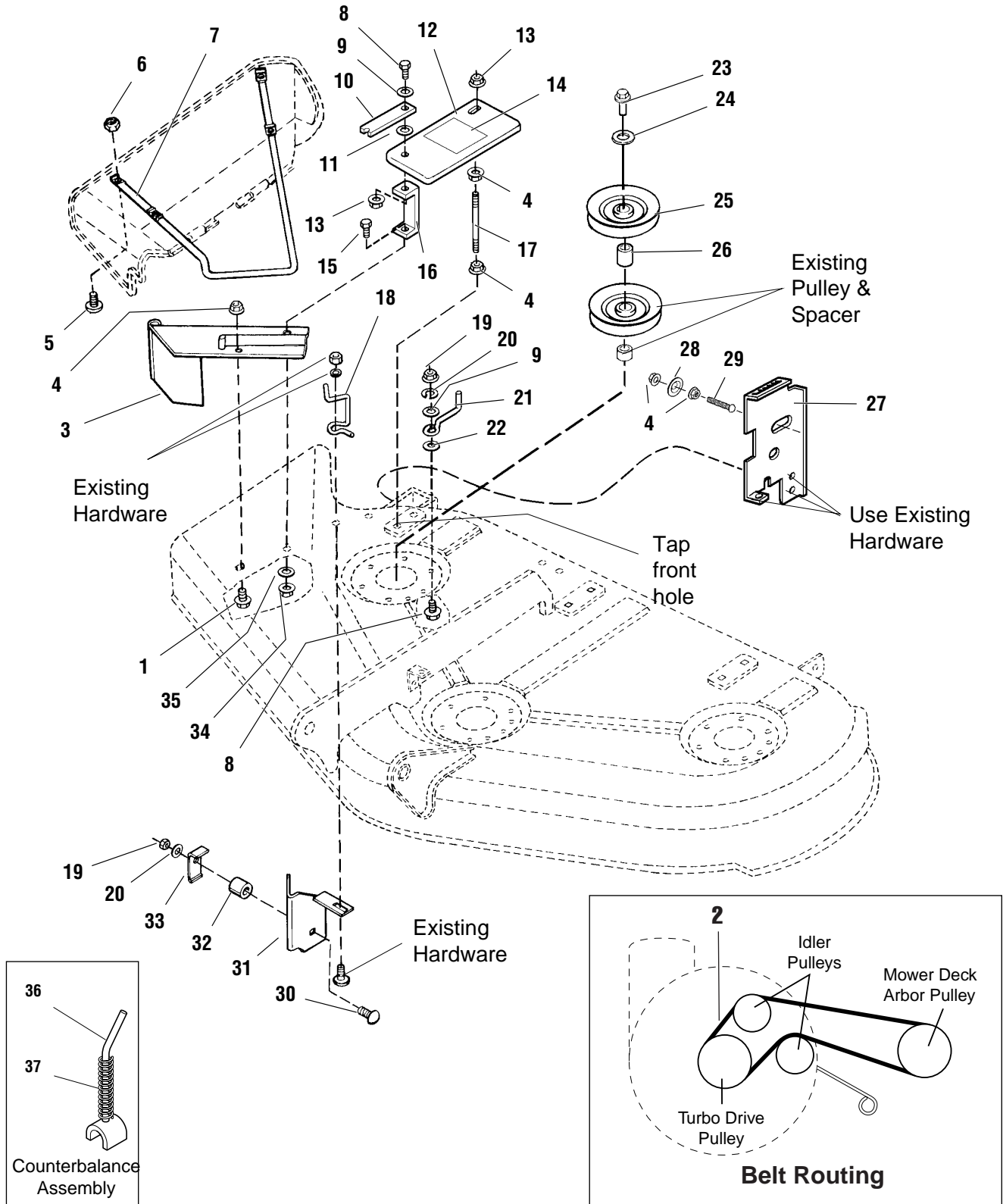
TP 400-2209-00-AT-SMA

# 44" Turbo, Mounting Group - 1693106

A-AT43206A

NOTE: Unless noted otherwise, use the standard hardware torque specification chart.

NOTE: All original mower deck parts are shown as phantom parts.



The above parts group applies to the following Mfg. Nos.:

1693106, 44" Turbo

## 44" Turbo, Mounting Group - 1693106

REF NO.	PART NO.	QTY.	DESCRIPTION
1	1931333	1	CARRIAGE BOLT, 5/16-18 x 3/4" Lg.
2	1717146	1	V-BELT
3	1705070	1	PIVOT ASSEMBLY
4	1931277	5	NUT, Hex Flange, Whizlock, 5/16-18
5	1960404	4	CAPSCREW, Truss Head, #10-24 x 3/4" Lg.
6	1933896	6	NUT, Nylock, #10-24
7	1718295	1	ROD, Deflector
8	1921333	2	CAPSCREW, Hex Hd., 5/16-18 x 1" Lg.
9	1919326	2	WASHER, Flat, 11/32
10	1717107	1	SUPPORT STRAP, Deflector
11	960210	1	WASHER, Nylon, 0.388" Dia.
12	1717105	1	COVER, Turbo Belt
13	1919438	2	NUT, Hex, Nylock, 5/16-18
14	1717291	1	DECAL, Warning
15	1921333	1	CAPSCREW, Hex Hd., 5/16-18 x 1" Lg.
16	1717104	1	SUPPORT, Belt Cover
17	1717106	1	STUD, 5/16-18 x 5-3/4" Lg.
18	1715018	1	LATCH, Spring Wire
19	1917372	3	NUT, Hex, 5/16-18
20	1917356	3	LOCKWASHER, 5/16
21	1674315	1	STOP, Belt
22	1924940	1	WASHER, Flat, 3/8
23	1713523	1	NUT, Sleeve
24	1603592	1	WASHER, Belleville
25	1717123	1	PULLEY
26	1713624	1	HUB, Double, 1.160" Long
27	1717109	1	BRACKET, Height Adjustment
28	1679164	1	CUP WASHER
29	1960565	1	CAPSCREW, Rnd Hd., 5/16-18 x 2.5 Lg.
30	1960223	1	CARRIAGE BOLT, 5/16-18 x 1-1/4" Lg.
31	1704880	1	BRACKET ASSEMBLY
32	1666294	1	SPACER
33	1705308	1	BRACKET, "L"
34	1927557	1	NUT, Hex Flange, Whiz-Lock, 5/16-18
35	1922755	1	WASHER, Flat, 13/32
36	1718215	1	LEVER ASSEMBLY, ZT Counterbalance
37	1718214	1	SPRING, Compression

### Footnotes:

The above parts group applies to the following Mfg. Nos.:

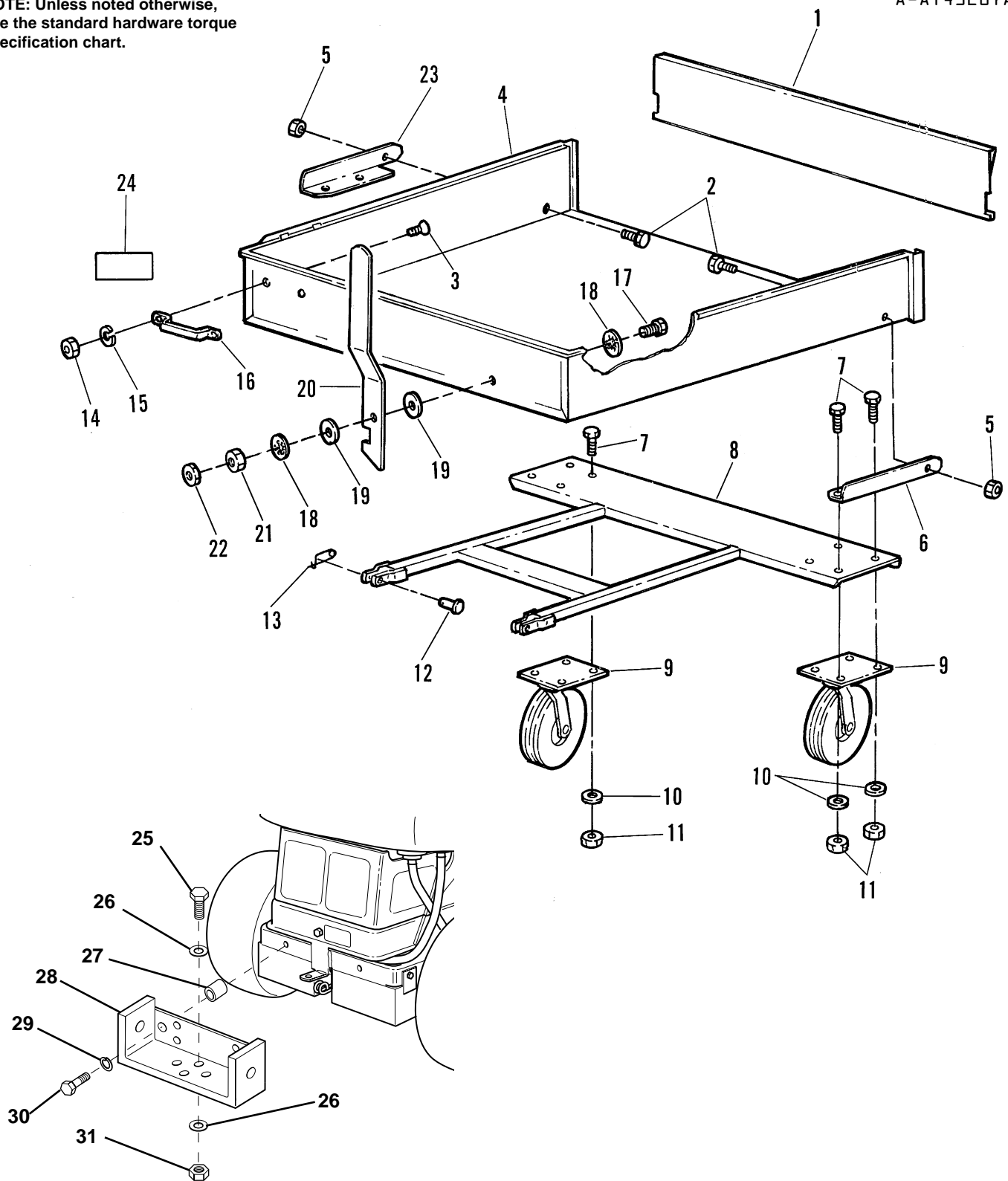
1693106, 44" Turbo

TP 400-2209-00-AT-SMA

# Quad Bagger Dump Cart - 1693107

A-AT43207A

NOTE: Unless noted otherwise, use the standard hardware torque specification chart.



The above parts group applies to the following Mfg. Nos.:

1693107, Quad Bagger Dump Cart

## Quad Bagger Dump Cart - 1693107

REF NO.	PART NO.	QTY.	DESCRIPTION
1	1708239	1	TAILGATE
2	1923114	2	CAPSCREW, 1/2-13 x 1
3	1921958	2	CAPSCREW, Hex, 1/4-20 x 1/2
4	1708238	1	BOX
5	1930644	3	LOCKNUT, Hex, Flange, 1/2-13
6	1703334	1	BRACKET, Pivot, L.H.
7	1921210	8	CAPSCREW, Hex, 3/8-16 x 1
8	1703336	1	FRAME
9	1676892	2	WHEEL, Swivel
10	1924940	8	WASHER, 3/8
11	1930651	8	NUT, Hex, Lock, 3/8-16
12	102004	2	PIN, Clevis, 1/2 x 1-1/2
13	176012	2	PIN, Safety
14	1916622	2	NUT, Hex, 1/4-20
15	1916964	2	LOCKWASHER, 1/4
16	1700768	1	HANDLE, Lift
17	1921977	1	CAPSCREW, 5/16-18 x 1-1/4
18	1919326	2	WASHER, 5/16
19	177649	2	WASHER, Spring, Special, 5/16
20	1700765	1	HANDLE, Latch
21	1917372	1	NUT, Hex, Full, 5/16-18
22	1920161	1	NUT, Hex, Jam, 5/16-18
23	1703335	1	BRACKET, Pivot, R.H.
24	1703370	1	DECAL, Max. Capacity
25	1921210	1	Capscrew, 3/8-16 x 1
26	1924940	2	Flat Washer, 3/6
27	1666332	2	Spacer
28	1703334	1	Hitch
29	1916965	2	Lockwasher, 3/8
30	1922130	2	Capscrew, 3/8-16 x 2-1/4
31	1930561	1	Hex Nut, 3/8-16
*	1708120	1	DECAL, Max. Cap.

### Footnotes:

The above parts group applies to the following Mfg. Nos.:

1693107, Quad Bagger Dump Cart

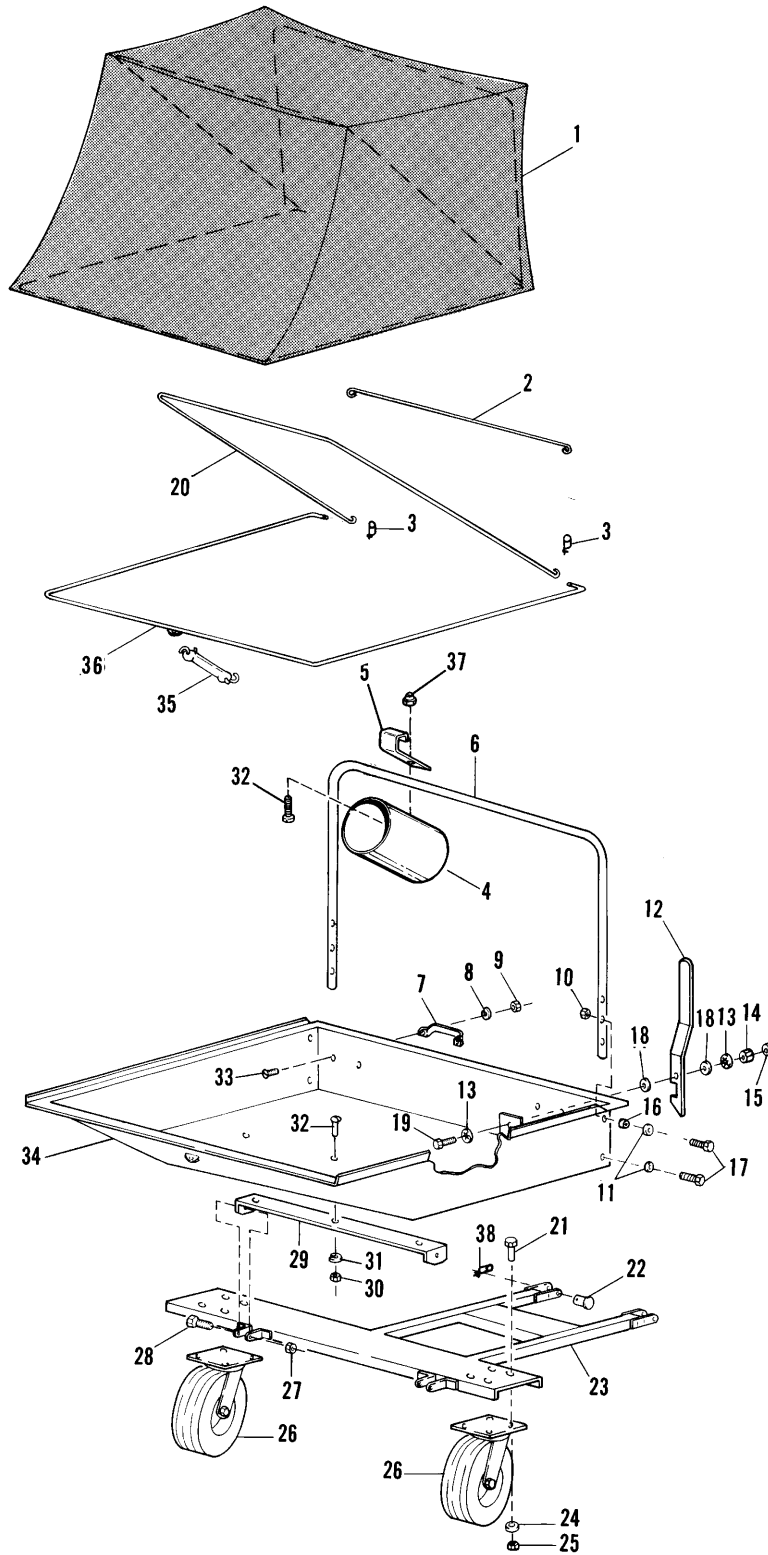
TP 400-2209-00-AT-SMA



# Wide Body Cart, Cart Group - 1693108

A-AT43208A

NOTE: Unless noted otherwise,  
use the standard hardware torque  
specification chart.



The above parts group applies to the following Mfg. Nos.:

1693108, Wide Body Dump Cart

## Wide Body Cart, Cart Group - 1693108

REF NO.	PART NO.	QTY.	DESCRIPTION
1	1708211	1	COVER
2	1700763	1	ROD, Straight
3	176012	2	CLIP
4	1700866	1	SLEEVE, Plastic, Connecting
5	1708099	1	CLAMP, Sleeve
6	1700758	1	TUBE, Support
7	1700768	2	HANDLE, Lift
8	1916964	4	LOCKWASHER, 1/4
9	1916622	4	NUT, Hex, 1/4-20
10	1923362	4	NUT, Lock, 5/16-18
11	1919326	6	WASHER, Flat, 5/16
12	1708212	1	HANDLE, Latch
13	177649	2	WASHER, Spring, 5/16
14	1917372	1	NUT, Hex, Full, 5/16-18
15	1920161	1	NUT, Jam, 5/16-18
16	1700267	2	SPACER, Plastic, 5/16
17	1921677	4	CAPSCREW, Hex Hd., 5/16-18 x 1-1/2
18	1919326	4	WASHER, 11/32 x 3/4
19	1921977	1	CAPSCREW, Hex Hd., 5/16-18 x 1-1/4
20	1700761	1	ROD, Support
21	1921210	8	BOLT, Hex, 3/8-16 x 1
22	102004	2	PIN, 1/2x 1-1/4
23	1708213	1	FRAME
24	1924940	8	WASHER, Flat, 3/8 S.A.E.
25	1930651	8	NUT, Hex Lock, 3/87-16
26	1676892	2	WHEEL, Swivel, 410/350-4
27	1922134	2	NUT, Hex Lock, 1/2-13
28	1921176	4	CAPSCREW, Hex Hd., 1/2-13 x 1-1/4
29	1700767	1	"U" BRACKET
30	1917372	3	NUT, Hex, 5/16-18
31	1917356	3	LOCKWASHER, 5/16
32	1918249	3	BOLT, Slotted, Truss Hd.
33	1921958	4	CAPSCREW, Hex Hd., 1/4-20 x 1/2
34	1708210	1	BOX
35	1700266	1	STRAP, Rubber, 6"
36	1700762	1	ROD, Support
37	1920397	1	NUT, Nylon insert, 1/4-20
38	176012	2	SAFETY CLIP

### Footnotes:

\* Not Pictured

---

The above parts group applies to the following Mfg. Nos.:

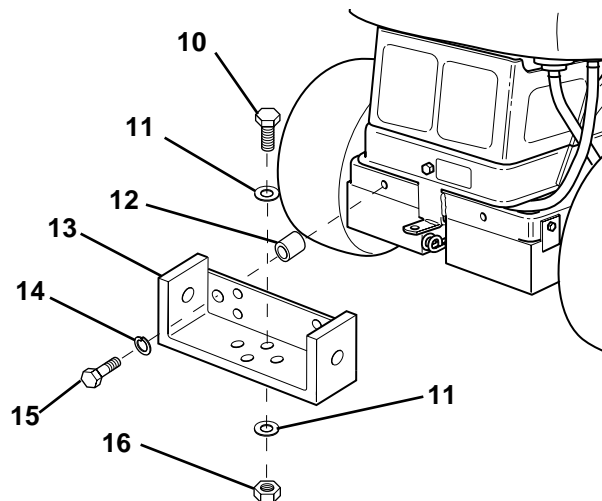
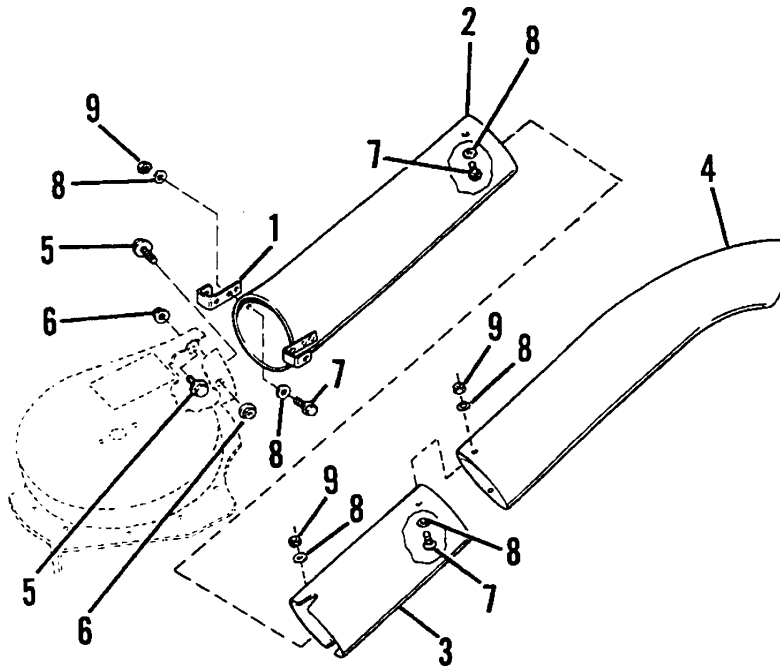
1693108, Wide Body Dump Cart

TP 400-2209-00-AT-SMA

# Wide Body Cart, Tube & Hitch Group - 1693108

A-AT43209A

NOTE: Unless noted otherwise,  
use the standard hardware torque  
specification chart.



The above parts group applies to the following Mfg. Nos.:

1693108, Wide Body Dump Cart

## Wide Body Cart, Tube & Hitch Group - 1693108

REF NO.	PART NO.	QTY.	DESCRIPTION
1	1705063	1	CLIP, Spring
2	1707712	1	TUBE ASSY, Lower
3	1704854	1	TUBE ASSY, Middle
4	1707710	1	TUBE ASSY, Upper
5	1960252	2	CARRIAGE BOLT, 1/4-20 x 5/8
6	1930641	2	LOCKNUT, Flange, 1/4-20
7	1930531	6	SCREW, Truss Head, 10-32 x 1/2
8	1910531	12	WASHER, Plain, #10
9	1928919	6	NUT & WASHER ASSY, 10-32
10	1921210	1	Capscrew, 3/8-16 x 1
11	1924940	2	Flat Washer, 3/6
12	1666332	2	Spacer
13	1703334	1	Hitch
14	1916965	2	Lockwasher, 3/8
15	1922130	2	Capscrew, 3/8-16 x 2-1/4
16	1930561	1	Hex Nut, 3/8-16

### Footnotes:

---

The above parts group applies to the following Mfg. Nos.:

1693108, Wide Body Dump Cart

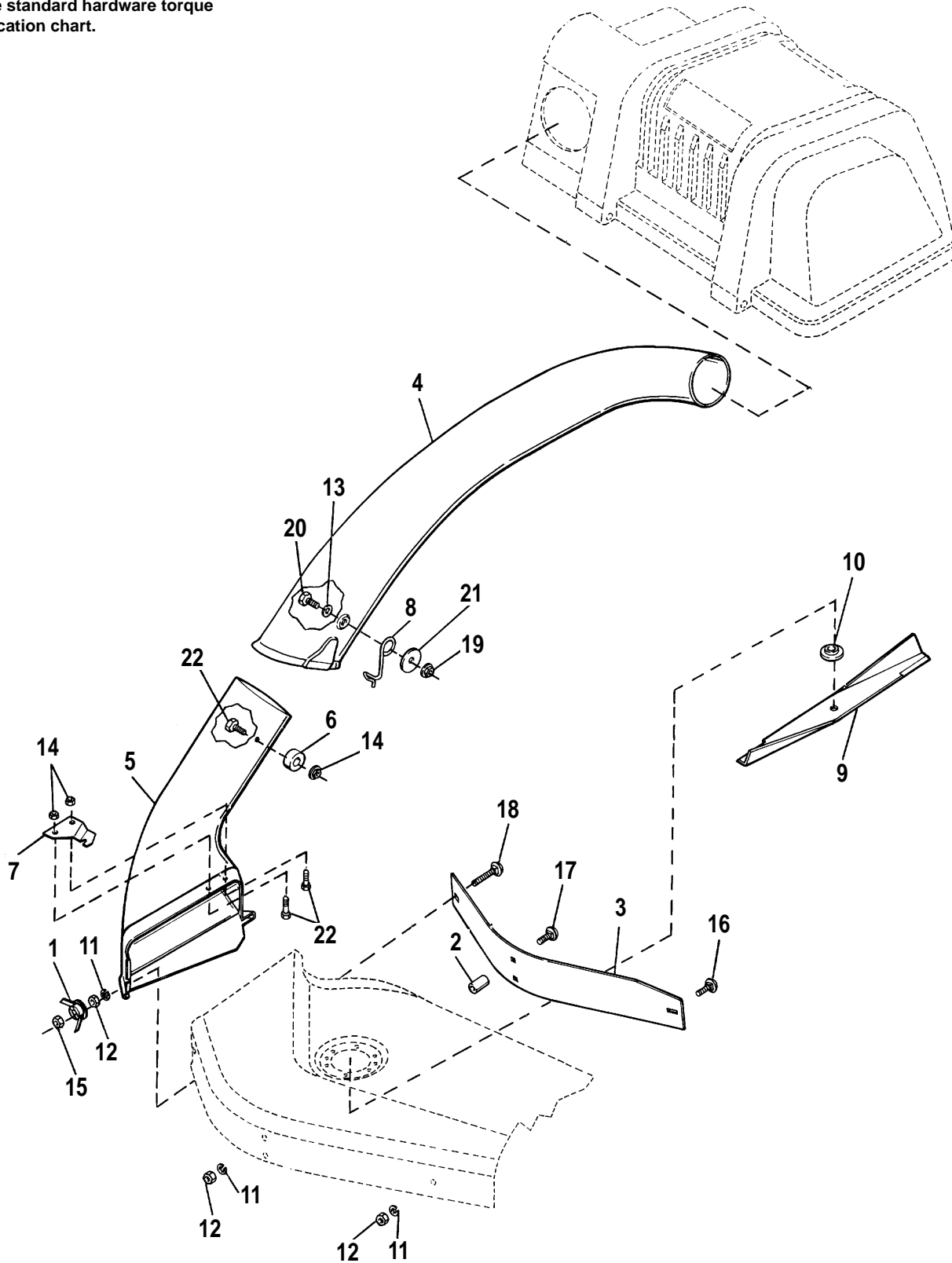
TP 400-2209-00-AT-SMA

# Clean Sweep Twin Bag Grass Catcher; Adapter, Blade, & Tube Group - 1693150

A-AT43210A

NOTE: Unless noted otherwise, use the standard hardware torque specification chart.

\*\*2131



NOTE: Unless noted otherwise, use the standard hardware torque specification chart located on the inside back cover.

The above parts group applies to the following Mfg. Nos.:

1693150, Clean Sweep Twin Bag Grass Catcher

**Clean Sweep Twin Bag Grass Catcher; Adapter, Blade, & Tube Group - 1693150**

REF NO.	PART NO.	QTY.	DESCRIPTION
1	1679163	1	WING NUT ASSY.
2	1702665	2	SPACER
3	1703765	1	BAFFLE, 38" Mower
4	1703769	1	TUBE, Transfer
5	1718535	1	ADAPTER
6	1704341	1	WASHER, Special
7	1704355	1	BRACKET, Attachment
8	1704603	1	LATCH, Tube
9	1704977	1	BLADE, High Lift, 38" Mower
10	1705010	1	ADAPTER, Blade, High Lift
11	1917356	4	LOCKWASHER, 5/16
12	1917372	4	NUT, Hex, 5/16-18
13	1919326	1	WASHER, Flat
14	1919438	3	NUT, Hex, Lock Esna, 5/16-18
15	1928698	1	NUT, Hex, Centerlock, 5/16-18
16	1931332	1	CARRIAGE BOLT, 5/16-16 x 5/8
17	1931338	2	CARRIAGE BOLT, 5/16-18 x 1 -3/4
18	1931339	1	CARRIAGE BOLT, 5/16-18 x 2
19	1935048	1	NUT, Flange Lock
20	1960122	1	CAPSCREW, Hex Hd.
21	1960185	1	WASHER, Flat
22	1960371	3	CAPSCREW, Hex Hd., 5/16-18 x 3/4

**Footnotes:**

---

**The above parts group applies to the following Mfg. Nos.:**

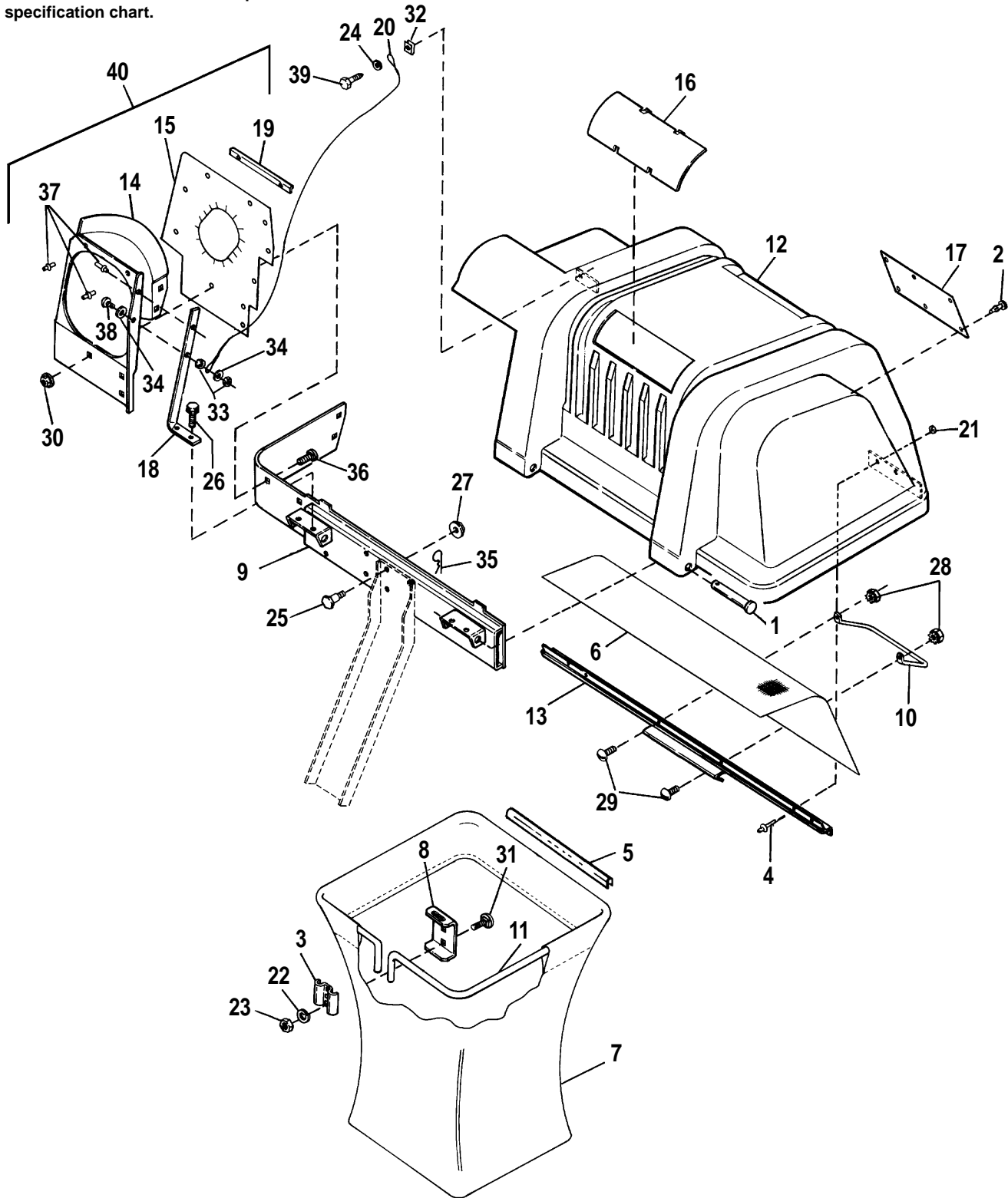
1693150, Clean Sweep Catcher

TP 400-2209-00-AT-SMA

# Clean Sweep & Turbo Clean Sweep Twin Catcher, Cover & Bag Group - 1693150, 1693151

A-AT43211A

NOTE: Unless noted otherwise,  
use the standard hardware torque  
specification chart.



The above parts group applies to the following Mfg. Nos.:

1693150, Clean Sweep Twin Bag Grass Catcher

1693151, Turbo Clean Sweep Twin Bag Grass Catcher

**Clean Sweep & Turbo Clean Sweep Twin Catcher, Cover & Bag Group - 1693150, 1693151**

REF NO.	PART NO.	QTY.	DESCRIPTION
1	960367	2	PIN, Round Head
2	1667248	6	CLIP, Canoe
3	1672023	2	CLAMP
4	1675043	4	RIVET, Pop
5	1675707	2	CLIP, Tube
6	1703700	1	SCREEN
7	1703764	2	BAG, Grass
8	1703807	2	HANGER
9	1703822	1	CROSS ASSY.
10	1703853	1	HANDLE, Latch
11	1703855	2	HOOP, Bag
12	1704056	1	COVER ASSY. (Incl. Ref. Nos. 4, 6, 13, 20, 21, 24, 32 & 39)
13	1704057	1	SEAL, Clip
14	1704075	1	SUPPORT, Tube
15	1704135	1	SEAL, Cover
16	1704180	2	WINDOW
17	1704405	1	DECAL, Safety
18	1704507	1	STRAP, Tube Support
19	1704508	3	BRACKET SEAL
20	1705876	1	CABLE, Double Loop
21	1910531	4	WASHER
22	1917356	4	LOCKWASHER, 5/16
23	1917372	4	NUT, Hex, 5/16-18
24	1921319	1	WASHER, Plain, 1/4
25	1921966	4	CAPSCREW, Hex Hd., 3/8-16 x 7/8
26	1927428	2	SCREW, Taptite, 1/4-20 x 3/8
27	1928352	4	NUT, Hex, Whizlock, 3/8-16
28	1928919	2	NUT, Hex, #10-32
29	1930531	2	SCREW, Truss. Hd., #10-32 x 1/2
30	1930642	5	LOCKNUT, Flange, 1/4-20 End Lock
31	1931333	4	CARRIAGE BOLT, 5/16-18 x 3/4
32	1933886	1	NUT, Speed
33	1960077	2	NUT, Hex, Lock, #8-32
34	1960096	2	WASHER
35	1960221	2	CLIP, Hairpin
36	1960252	5	CARRIAGE BOLT, 1/4-20 x 5/8
37	1960381	7	RIVET, Pop
38	1960399	1	SCREW, Round Hd., #8-32 x 7/8
39	1960400	1	SCREW, Self Tapping, #10-12 x 5/8
40	1704615	1	SUPPORT ASSEMBLY, Tube (Incl. Ref. Nos. 14,15,18,19,33,34,37,38)

**Footnotes:**

---

The above parts group applies to the following Mfg. Nos.:

1693150, Clean Sweep Twin Bag Grass Catcher

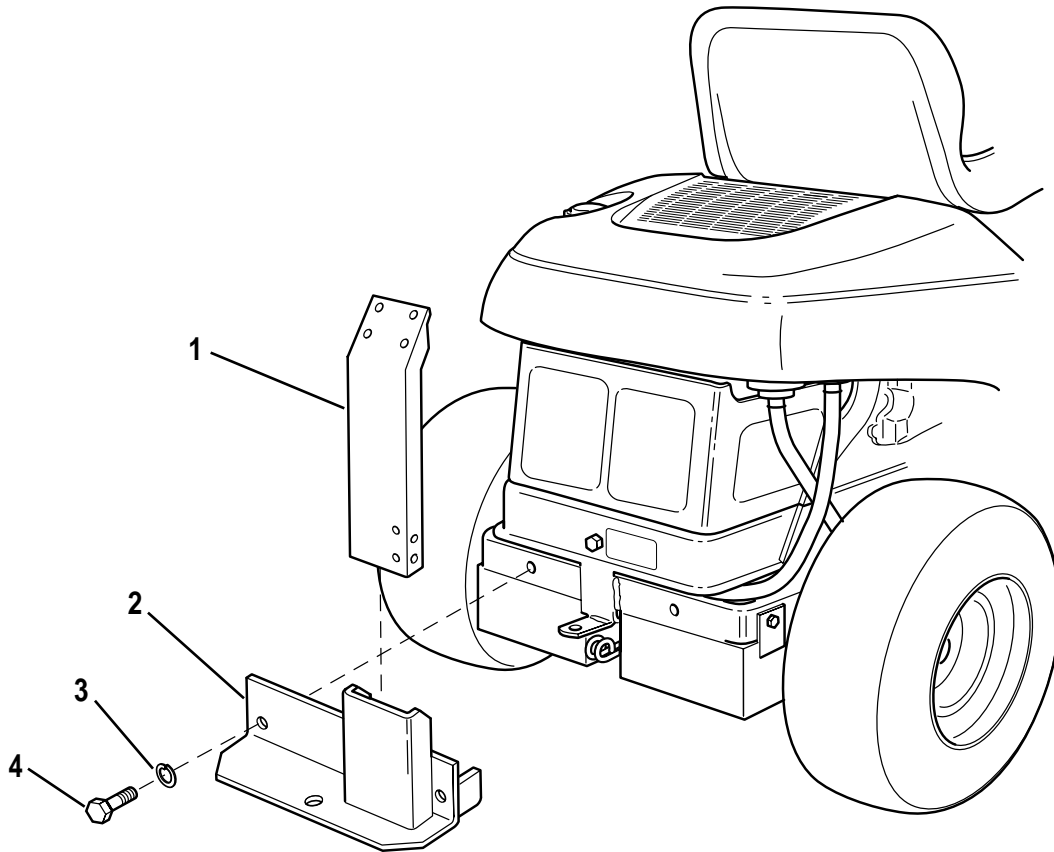
1693151, Turbo Clean Sweep Twin Bag Grass Catcher



## Clean Sweep & Turbo Clean Sweep Twin Catcher, Hitch Group - 1693150, 1693151

A-AT43212A

NOTE: Unless noted otherwise,  
use the standard hardware torque  
specification chart.



The above parts group applies to the following Mfg. Nos.:

1693150, Clean Sweep Twin Bag Grass Catcher

1693151, Turbo Clean Sweep Twin Bag Grass Catcher

**Clean Sweep & Turbo Clean Sweep Twin Catcher, Hitch Group - 1693150, 1693151**

---

<b>REF NO.</b>	<b>PART NO.</b>	<b>QTY.</b>	<b>DESCRIPTION</b>
1	1709111	1	SUPPORT, Catcher
2	1716025	1	HITCH ASSY, Twin Bagger
3	1916965	2	LOCKWASHER, 3/8
4	1922648	2	CAPSCREW, 3/8-16 x 4 (Used with 18HP Models)
4	1923903	2	CAPSCREW, 3/8-16 x 3 (Used with 14HP & 16HP Models)

---

**Footnotes:**

---

**The above parts group applies to the following Mfg. Nos.:**

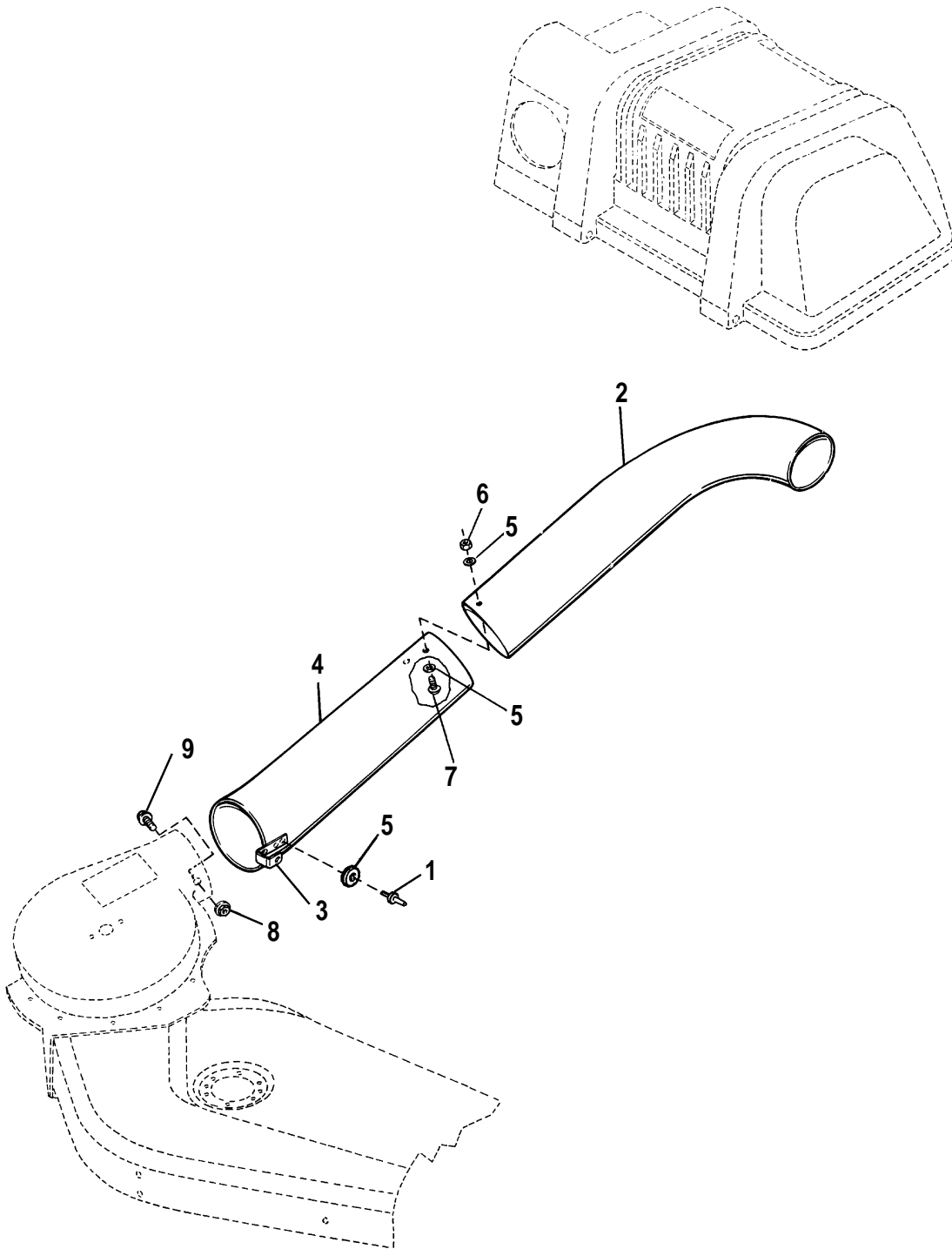
1693150, Clean Sweep Twin Bag Grass Catcher

1693151, Turbo Clean Sweep Twin Bag Grass Catcher

# Turbo Clean Sweep Twin Catcher, Tube Group - 1693151

A-AT43213A

NOTE: Unless noted otherwise,  
use the standard hardware torque  
specification chart.



The above parts group applies to the following Mfg. Nos.:

1693151, Turbo Clean Sweep Twin Bag Grass Catcher

### **Turbo Twin Catcher, Tube Group - 1693151**

---

<b>REF NO.</b>	<b>PART NO.</b>	<b>QTY.</b>	<b>DESCRIPTION</b>
1	910542	2	RIVET, Pop
2	1715663	1	ELBOW, Upper
3	1705063	1	CLIP, Spring
4	1705111	1	TUBE ASSY., Lower (Incl. Ref. Nos.1, 3 & 5)
5	1910531	6	WASHER, Plain
6	1928919	2	NUT, Hex
7	1930531	2	SCREW, Truss Hd., #10-32 x 1/2
8	1930641	1	NUT, Hex, Flange Lock, 1/4-20 (Shipped with Turbo )
9	1960252	1	CARRIAGE BOLT, 1/4-20 x 5/8 (Shipped with Turbo )

---

**Footnotes:**

---

**The above parts group applies to the following Mfg. Nos.:**

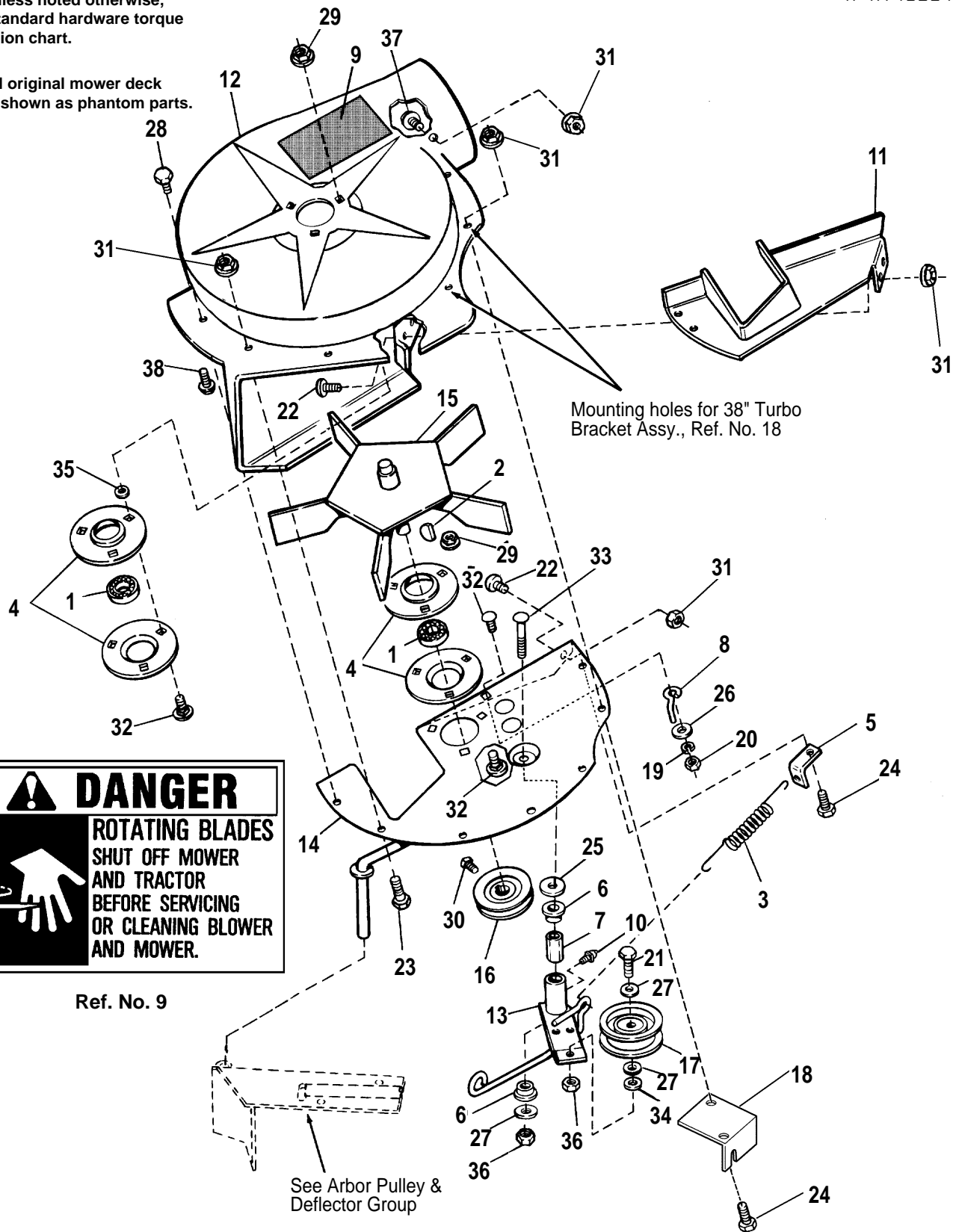
1693151, Turbo Clean Sweep Twin Bag Grass Catcher

# 38" Turbo, Blower Group - 1693225

A-AT43214A

NOTE: Unless noted otherwise, use the standard hardware torque specification chart.

NOTE: All original mower deck parts are shown as phantom parts.



**⚠ DANGER**

**ROTATING BLADES**

SHUT OFF MOWER  
AND TRACTOR  
BEFORE SERVICING  
OR CLEANING BLOWER  
AND MOWER.

Ref. No. 9

See Arbor Pulley & Deflector Group

The above parts group applies to the following Mfg. Nos.:

1693225, 38" Turbo

**38" Turbo, Blower Group - 1693225**

REF NO.	PART NO.	QTY.	DESCRIPTION
1	108202	2	BEARING
2	960403	1	KEY, Woodruff, Modified, .188 x .875 #61
3	1657499	1	SPRING, Tension
4	1665982	4	BEARING, Retainer
5	1668500	1	BRACKET, Anchor, Spring
6	1676148	2	BUSHING
7	1676833	1	SPACER
8	1678435	1	BELT STOP
9	1700259	1	DECAL, Danger, Blower
10	1704314	1	FITTING, Grease
11	1705267	1	PLATE, Cover
12	1705492	1	FAN HOUSING (Incl. Ref. No. 9)
13	1706284	1	LEVER ASSY, Turbo (Incl. Ref. Nos. 6 &10)
14	1706465	1	PLATE ASSY.
15	1706631	1	FAN ASSY., 5 Blade
16	1706634	1	PULLEY, Driven
17	1708030	1	IDLER PULLEY ASSY.
18	1714911	1	BRACKET ASSY., Turbo
19	1917356	1	WASHER, Spring Lock, 5/16
20	1917372	1	NUT, Hex, 5/16
21	1920415	1	CAPSCREW, Hex Hd., 3/8-16 x 1-1/4
22	1960472	2	SCREW, Truss Hd., 1/4-18 x 5/8
23	1921959	3	CAPSCREW, Hex, 1/4-20 x 5/8
24	1923341	3	CAPSCREW, Hex Hd., 1/4-20 x 3/4
25	1924361	1	WASHER, Flat
26	1924874	1	WASHER, Flat, 5/16
27	1924940	3	WASHER, Plain, 3/8
28	1925003	1	CAPSCREW, Hex, Taptite, 1/4-20 x 1/2
29	1927557	6	NUT, Flange, Whizlock, 5/16-18
30	1928691	1	SETSCREW, Hex, Socket Hd., 5/16-18 x 5/16
31	1930641	10	NUT, Hex, Flange Lock, 1/4-20
32	1931333	7	CARRIAGE BOLT, 5/16-18 x 3/4
33	1931355	1	CARRIAGE BOLT, 3/8-16 x 2-1/4
34	1933263	1	WASHER, Flat, 7/16
35	1933988	6	PUSH NUT, 3/8
36	1960251	2	NUT, Hex, Jam, Center Lock, 3/8-16
37	1960252	1	CARRIAGE BOLT, 1/4-20 x 5/8
38	1960256	2	SCREW, Washer Hd., 1/4-18 x 5/8

**Footnotes:**

---

The above parts group applies to the following Mfg. Nos.:

1693225, 38" Turbo

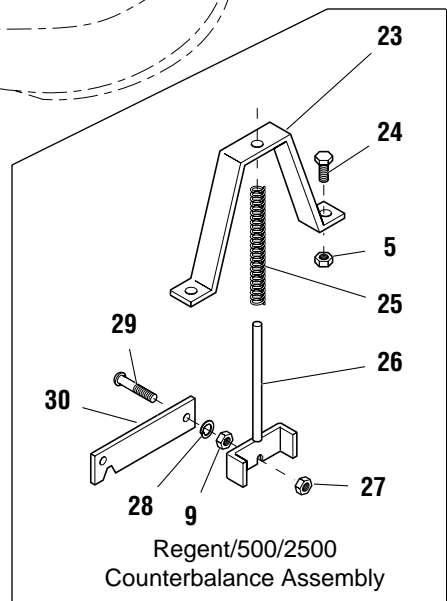
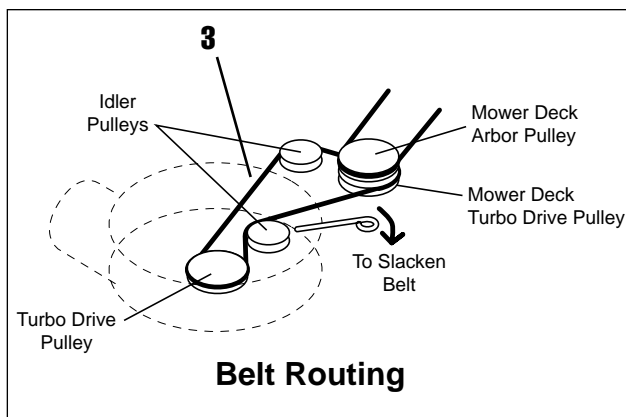
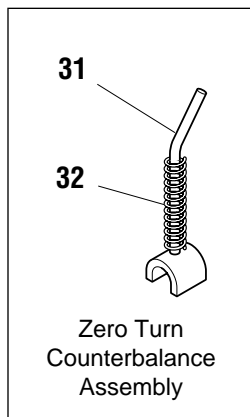
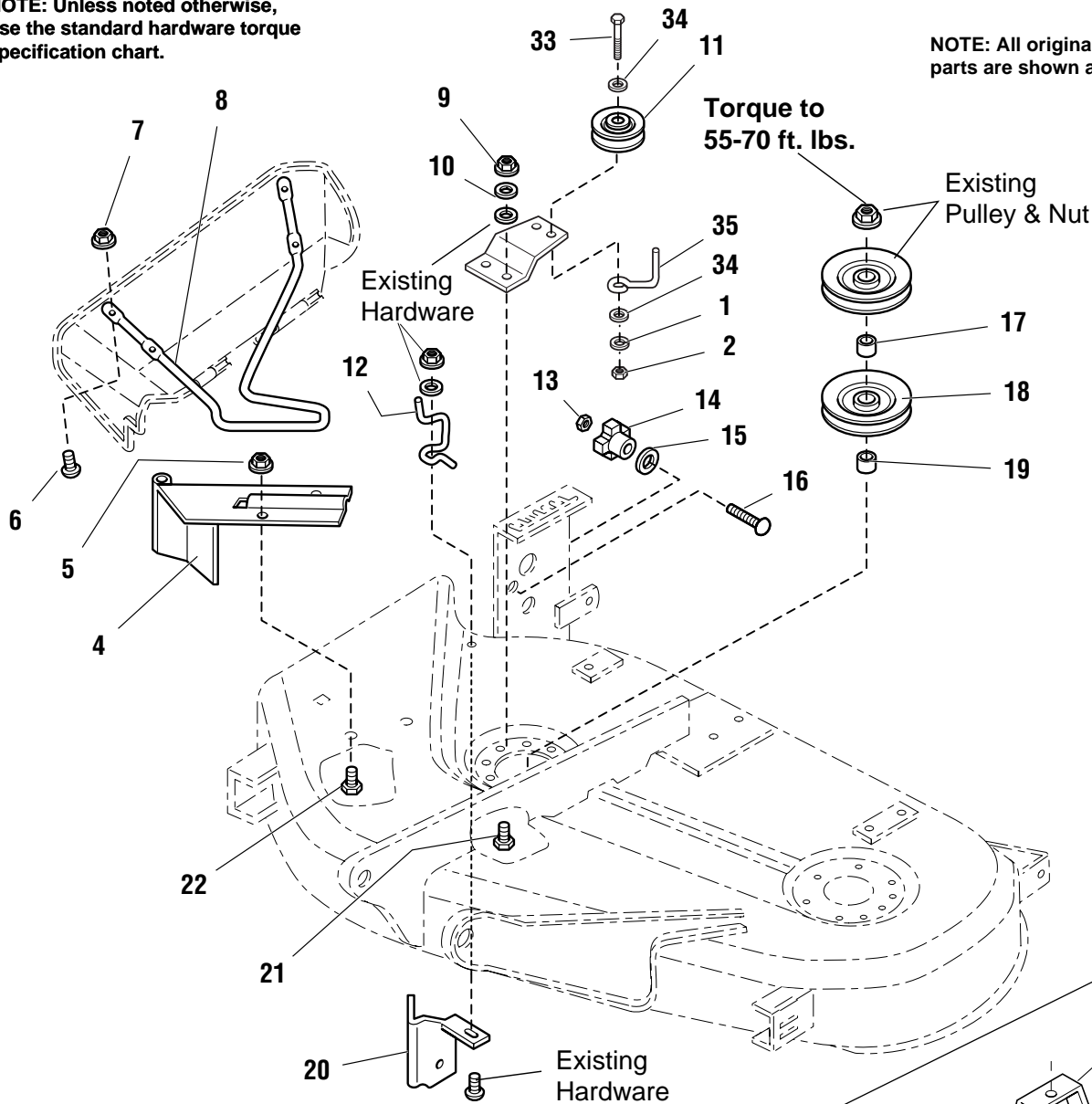
TP 400-2209-00-AT-SMA

# 38" Turbo , Mounting Group - 1693225

A-AT43215A

**NOTE:** Unless noted otherwise, use the standard hardware torque specification chart.

**NOTE:** All original mower deck parts are shown as phantom parts.



The above parts group applies to the following Mfg. Nos.:

1693225, 38" Turbo

**38" Turbo , Mounting Group - 1693225**

REF NO.	PART NO.	QTY.	DESCRIPTION
1	1916965	1	LOCKWASHER, 3/8
2	1916950	1	NUT, 3/8-16
3	1705141	1	V-BELT
4	1705066	1	PIVOT BRACKET
5	1931277	3	LOCKNUT, 5/16-18
6	1960404	4	SCREW, Truss Hd., 10-24 x 3/4
7	1933896	4	NUT, Nylock, 20-24
8	1718295	1	SUPPORT ROD, Deflector
9	1917372	4	NUT, 5/16-18
10	1917356	4	LOCKWASHER,
11	1714817	1	IDLER PULLEY ASSY. (Includes Spacer)
12	1715018	1	SPRING LATCH
13	1923362	1	LOCKNUT, 5/16-18
14	1670578	1	KNOB
15	1933468	1	WASHER, 11/32 OD x 1-1/4 ID x 1/8 Thick
16	1931337	1	CARRIAGE BOLT, 5/16-18 x 1-1/2
17	1713624	1	HUB, Splined, 1.28" Long
18	1713091	1	PULLEY
19	1713621	1	HUB, 1.65" Long
20	1704881	1	BAFFLE
21	1930600	2	SCREW, Taptite, 5/16-18 x 1-1/2
22	1931333	2	CARRIAGE BOLT, 5/16-18 x 3/4
23	1717143	1	BRACKET, Counterbalance
24	1930591	1	SCREW, Hex Whiz-Lock, 5/16-18 x 3/4
25	1716875	1	SPRING, Compression (Long)
26	1717289	1	ROD ASSEMBLY, Counterbalance
27	1935048	1	NUT, Flange, 2-Way Lock, 5/16-18
28	1917356	1	LOCKWASHER, 5/16
29	1960233	1	CARRIAGE BOLT, 5/16-18 x 1-1/4
30	1717297	1	ARM, Rear
31	1718215	1	LEVER ASSEMBLY, ZT Counterbalance
32	1718214	1	SPRING, Compression (Short)
33	1921971	1	CAPSCREW, 3/8-16 x 1-1/4
34	1924940	2	WASHER, 3/8
35	172845	1	BELT GUIDE

**Footnotes:**

---

The above parts group applies to the following Mfg. Nos.:

1693225, 38" Turbo

TP 400-2209-00-AT-SMA

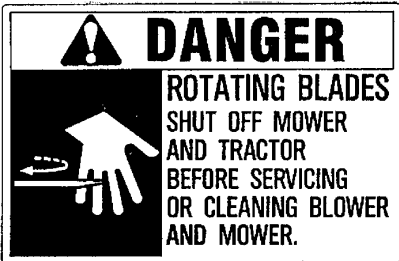
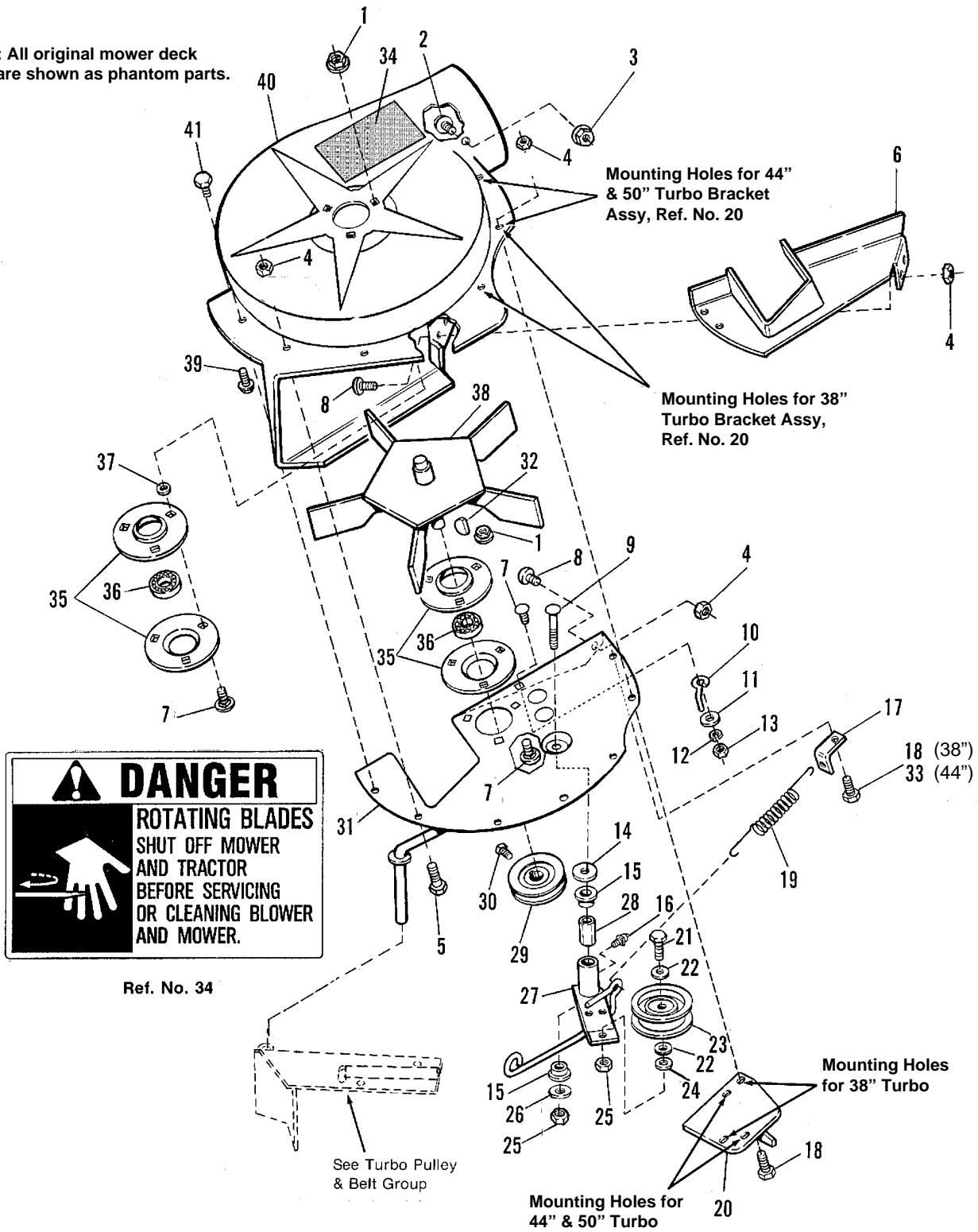


# 50" Turbo, Blower Group - 1693228

A-AT43216A

NOTE: Unless noted otherwise, use the standard hardware torque specification chart.

NOTE: All original mower deck parts are shown as phantom parts.



Ref. No. 34

See Turbo Pulley & Belt Group

The above parts group applies to the following Mfg. Nos.:

1693228, 50" Turbo

## 50" Turbo, Blower Group - 1693228

REF NO.	PART NO.	QTY.	DESCRIPTION
1	1935048	6	NUT, Flange, Whizlock, 5/16-18
2	1960252	1	CARRIAGE BOLT, 1/4-20 x 5/8
3	1920397	9	NUT, Hex, Nylock, 1/4-20
4	1930641	3	NUT, Hex, Flange Lock, 1/4-20
5	1921959	3	CAPSCREW, Hex, 1/4-20 x 5/8
6	1705267	1	PLATE, Cover
7	1931333	9	CARRIAGE BOLT, 5/16-18 x 3/4
8	1960472	2	SCREW, Truss Hd., 1/4-18 x 5/8
9	1931355	1	CARRIAGE BOLT, 3/8-16 x 2-1/4
10	1678435	1	BELT STOP
11	1924874	1	WASHER, Flat
12	1917356	1	WASHER, Spring Lock, 5/16
13	1917372	1	NUT, Hex, 5/16
14	1924361	1	WASHER, Flat
15	1676148	2	BUSHING
16	1704314	1	FITTING, Grease
17	1668500	1	BRACKET, Anchor, Spring
18	1923341	3	CAPSCREW, Hex Hd., 1/4-20 x 3/4 (38" Models)
19	1716853	1	SPRING, Tension
20	1704983	1	BRACKET ASSY., Turbo
21	1920415	1	CAPSCREW, Hex Hd., 3/8-16 x 1-1/4
22	1924940	2	WASHER, Plain
23	1708030	1	IDLER PULLEY ASSY.
24	1933263	1	WASHER, Flat
25	1960251	2	NUT, Hex, Jam, Center Lock, 3/8-16
26	1924940	1	WASHER, Flat
27	1706284	1	LEVER ASSY, Turbo (Incl. Ref. Nos. 15 &16)
28	1676833	1	SPACER
29	1706634	1	PULLEY, Driven
30	1928691	1	SETSCREW, Hex, Socket Hd., 5/16-18 x 5/16
31	1706465	1	PLATE ASSY.
32	960403	1	KEY, Woodruff, Modified
33	1924009	1	CAPSCREW, Hex Hd., 1/4-20 x 7/8 (44" Models)
34	1700259	1	DECAL, Danger, Blower
35	1665982	4	BEARING, Retainer
36	108202	2	BEARING
37	1933988	3	PUSH NUT, 3/8
38	1706631	1	FAN ASSY., 5 Blade
39	1960256	1	SCREW, Truss Hd., 1/4-18 x 1/4
40	1705492	1	FAN HOUSING (Incl. Ref. No. 34)
41	1925003	1	CAPSCREW, Hex, Taptite, 1/4-20 x 1/2

### Footnotes:

The above parts group applies to the following Mfg. Nos.:

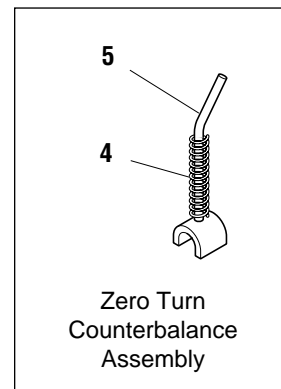
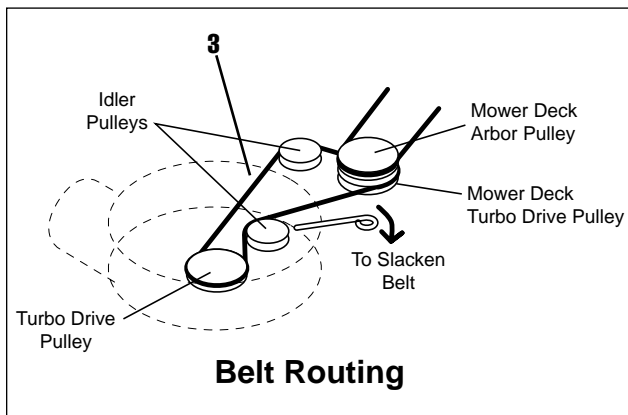
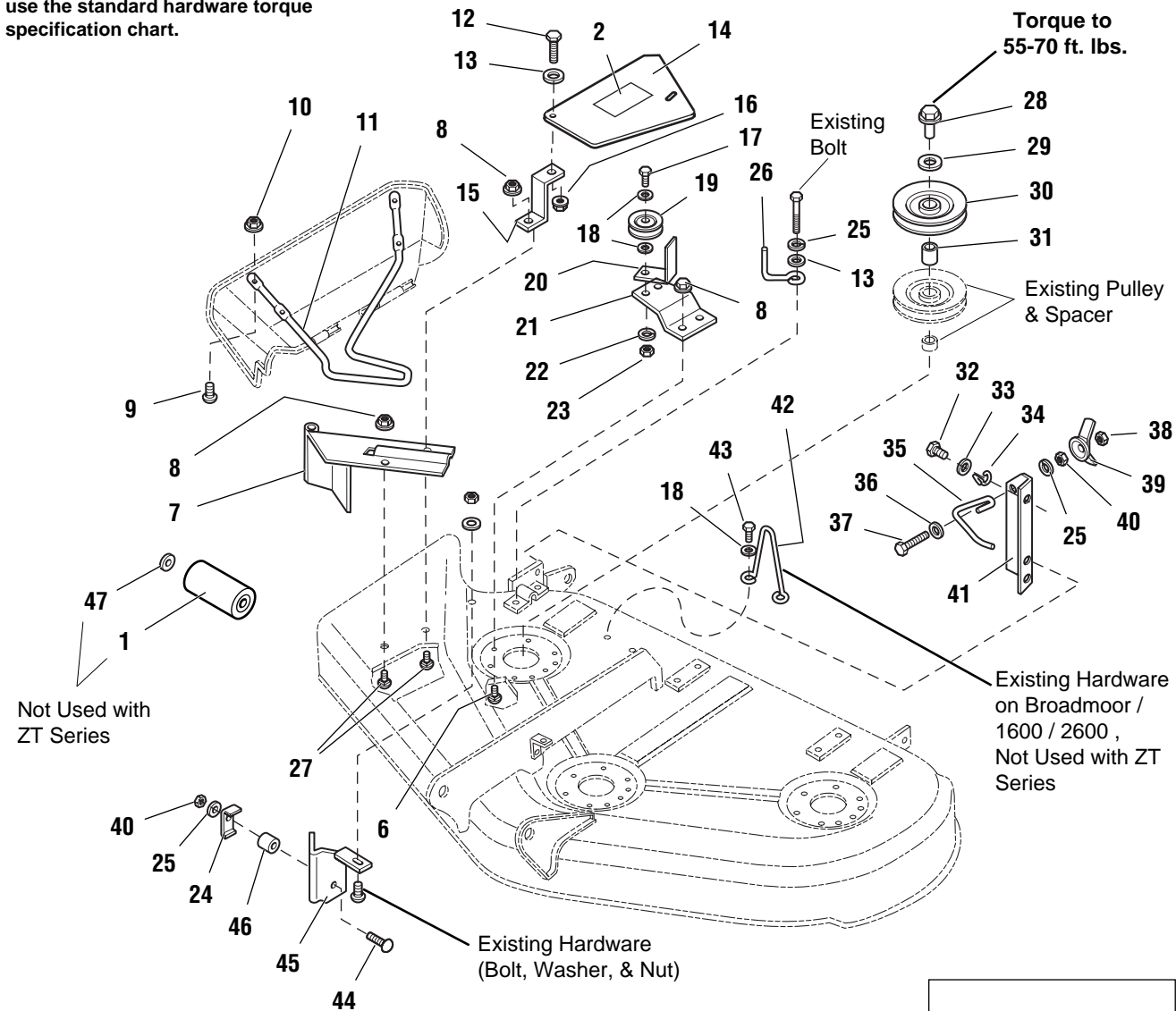
1693228, 50" Turbo

TP 400-2209-00-AT-SMA

# 50" Turbo, Mounting Group - 1693228

A-AT43217A

NOTE: Unless noted otherwise, use the standard hardware torque specification chart.



The above parts group applies to the following Mfg. Nos.:

1693228, 50" Turbo

**50" Turbo, Mounting Group - 1693228**

REF NO.	PART NO.	QTY.	DESCRIPTION
1	1713540	1	ROLLER
2	1717291	1	DECAL, Warning
3	1707956	1	V-BELT
4	1718214	1	SPRING, Counterbalance
5	1718215	1	LEVER ASSY, Counterbalance
6	1923325	2	CAPSCREW, Hex Hd, 5/16-18 x 7/8
7	1705066	1	PIVOT ASSEMBLY
8	1931277	4	NUT, Hex Whizlock, 5/16-18
9	1960404	4	SCREW, Truss Hd, #10-24 x 3/4
10	1933896	4	NUT, Hex, Nylon Lock, #10-24
11	1718295	1	ROD, Deflector
12	1921333	2	CAPSCREW, Hex Hd, 5/16-18 x 1
13	1919326	3	WASHER, 5/16
14	1718309	1	COVER, Belt
15	1718304	1	SUPPORT, Belt Cover
16	1919438	1	NUT, Hex 5/16-18
17	1921969	1	CAPSCREW, Hex Hd 3/8-16 x 1-1/2
18	1924940	3	WASHER, Flat, 3/8
19	1714817	1	PULLEY ASSEMBLY, Idler
20	1705277	1	LATCH, Belt Cover
21	1704768	1	BRACKET, Idler
22	1916965	1	LOCKWASHER, 3/8
23	1916950	1	NUT, Hex, 3/8-16
24	1705308	1	BRACKET
25	1917356	2	LOCKWASHER, 5/16
26	172845	1	BELT STOP
27	1931335	2	CARRIAGE BOLT, 5/16-18 x 1
28	1713523	1	NUT, Sleeve
29	1603592	1	WASHER, Belleville
30	1709941	1	PULLEY
31	1713634	1	HUB, Double Pulley, 1.16" Long
32	1925003	1	CAPSCREW, Hex Hd, 1/4-20 x 1/2
33	1921319	1	WASHER, 1/4
34	1678435	1	BELT STOP, (Height Indicator)
35	1705064	1	LATCH, Spring
36	1919381	1	WASHER, 5/16
37	1960318	1	CAPSCREW, Hex Hd, 5/16-18
38	1923362	1	NUT, Hex Lock, 5/16-18
39	1679163	1	NUT, Wing, Special, 5/16
40	1917372	3	NUT, Hex, 5/16-18
41	1704982	1	BRACKET, Anchor
42	1704098	1	UPSTOP, Wire
43	1960373	2	CAPSCREW, Hex Washer Hd, Taptite, 5/16
44	1960223	1	CARRIAGE BOLT, 5/16-18
45	1704880	1	BRACKET ASSEMBLY, Cutoff
46	1666294	1	SPACER
47	1960520	1	PUSHNUT

**Footnotes:**

---

The above parts group applies to the following Mfg. Nos.:

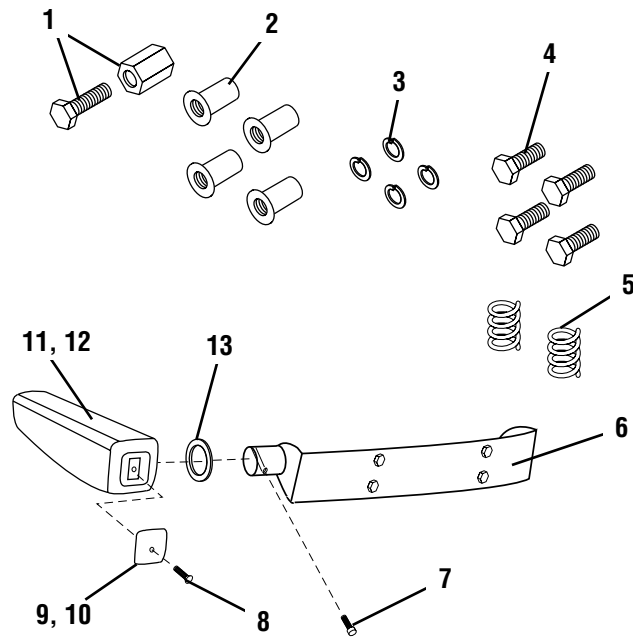
1693228, 50" Turbo

TP 400-2209-00-AT-SMA

# Arm Rest Accessory - 1693427

A-AT43218A

NOTE: Unless noted otherwise,  
use the standard hardware torque  
specification chart.



The above parts group applies to the following Mfg. Nos.:

1693427, Arm Rest Accessory

## Arm Rest Accessory - 1693427

REF NO.	PART NO.	QTY.	DESCRIPTION
1	‡	1	INSERT TOOL
2	1718852	4	INSERT-NUT, Open End
3	1916965	4	LOCKWASHER, 3/8
4	1921965	4	BOLT, 3/8-16 x 3/4
5	1719363	2	SPRING, Compression
6	‡	1	BRACKET, Arm Rest Mounting
7	*	2	ARM REST STOP
8	*	2	SCREW, Tapping, #10 x 5/8
9	*	1	PLATE, Cover, LH
10	*	1	PLATE, Cover, RH
11	*	1	ARM REST, LH
12	*	1	ARM REST, RH
13	*	2	WAVE WASHER

### Footnotes:

Arm Rest Accessory 1693427 used with seats P/N's 1715912 & 1718851 ONLY.

‡ Not a Servicable Part.

\* Contained in Arm Rest Replacement Kit: LH Arm Rest Repair Kit 1686729  
RH Arm Rest Repair Kit 1686728

---

The above parts group applies to the following Mfg. Nos.:

1693427, Arm Rest Accessory

TP 400-2209-00-AT-SMA

## Part Number Index by Page Number

Part No.	Page No	Ref No.	Part No.	Page No	Ref No.	Part No.	Page No	Ref No.	Part No.	Page No	Ref No.	Part No.	Page No	Ref No.
‡	36	1	1679163	34	39	1705063	18	1	1713634	34	31	1916950	30	2
‡	36	6	1679164	10	41	1705063	26	3	1714255	10	6	1916950	34	23
*	36	7	1679164	12	28	1705064	34	35	1714817	30	11	1916964	14	15
*	36	8	1700259	10	9	1705066	30	4	1714817	34	19	1916964	16	8
*	36	9	1700259	28	9	1705066	34	7	1714911	28	18	1916965	14	29
*	36	10	1700259	32	34	1705070	12	3	1715018	12	18	1916965	18	14
*	36	11	1700266	16	35	1705111	26	4	1715018	30	12	1916965	24	3
*	36	12	1700267	16	16	1705112	2	5	1715663	26	2	1916965	30	1
*	36	13	1700758	16	6	1705141	30	3	1715811	6	1	1916965	34	22
102004	14	12	1700761	16	20	1705267	10	11	1715811	8	1	1916965	36	3
102004	16	22	1700762	16	36	1705267	28	11	1716025	24	2	1917356	4	4
108202	10	1	1700763	16	2	1705267	32	6	1716105	4	1	1917356	6	5
108202	28	1	1700765	14	20	1705277	34	20	1716147	4	2	1917356	8	5
108202	32	36	1700767	16	29	1705282	2	13	1716148	6	3	1917356	10	19
172845	30	35	1700768	14	16	1705308	12	33	1716149	6	2	1917356	12	20
172845	34	26	1700768	16	7	1705308	34	24	1716150	8	3	1917356	16	31
176012	14	13	1700866	16	4	1705492	10	12	1716151	8	2	1917356	20	11
176012	16	3	1702665	20	2	1705492	28	12	1716695	4	8	1917356	22	22
176012	16	38	1703334	14	6	1705492	32	40	1716696	4	7	1917356	28	19
177649	14	19	1703334	14	28	1705779	2	9	1716696	6	7	1917356	30	10
177649	16	13	1703334	18	13	1705783	2	1	1716697	8	7	1917356	30	28
910542	26	1	1703335	14	23	1705876	22	20	1716853	10	3	1917356	32	12
960210	12	11	1703336	14	8	1706284	28	13	1716853	32	19	1917356	34	25
960367	22	1	1703370	14	24	1706284	32	27	1716875	30	25	1917372	4	3
960403	10	2	1703378	2	2	1706465	10	14	1717101	10	13	1917372	6	4
960403	28	2	1703700	22	6	1706465	28	14	1717104	12	16	1917372	8	4
960403	32	32	1703764	22	7	1706465	32	31	1717105	12	12	1917372	10	20
1603592	12	24	1703765	20	3	1706631	10	15	1717106	12	17	1917372	12	19
1603592	34	29	1703769	20	4	1706631	28	15	1717107	12	10	1917372	14	21
1657499	28	3	1703807	22	8	1706631	32	38	1717108	10	18	1917372	16	14
1665982	10	4	1703822	22	9	1706634	10	16	1717109	12	27	1917372	16	30
1665982	28	4	1703853	22	10	1706634	28	16	1717123	12	25	1917372	20	12
1665982	32	35	1703855	22	11	1706634	32	29	1717143	30	23	1917372	22	23
1666294	12	32	1704056	22	12	1707691	2	10	1717146	12	2	1917372	28	20
1666294	34	46	1704057	22	13	1707710	18	4	1717289	30	26	1917372	30	9
1666332	14	27	1704075	22	14	1707712	18	2	1717291	12	14	1917372	32	13
1666332	18	12	1704098	34	42	1707956	34	3	1717291	34	2	1917372	34	40
1667248	22	2	1704135	22	15	1708030	10	17	1717297	30	30	1918249	16	32
1668500	10	5	1704180	22	16	1708030	28	17	1718214	12	37	1918431	10	10
1668500	28	5	1704314	28	10	1708030	32	23	1718214	30	32	1919326	12	9
1668500	32	17	1704314	32	16	1708099	16	5	1718214	34	4	1919326	14	18
1670578	30	14	1704341	20	6	1708120	16	*	1718215	12	36	1919326	16	11
1672023	22	3	1704355	20	7	1708210	16	34	1718215	30	31	1919326	16	18
1673320	2	12	1704405	22	17	1708211	16	1	1718215	34	5	1919326	20	13
1674315	12	21	1704507	22	18	1708212	16	12	1718295	12	7	1919326	34	13
1675043	22	4	1704508	22	19	1708213	16	23	1718295	30	8	1919381	34	36
1675707	22	5	1704603	20	8	1708238	14	4	1718295	34	11	1919438	12	13
1676148	28	6	1704615	22	40	1708239	14	1	1718304	34	15	1919438	20	14
1676148	32	15	1704768	34	21	1708352	10	34	1718309	34	14	1919438	34	16
1676833	28	7	1704854	18	3	1709111	24	1	1718535	20	5	1920161	14	22
1676833	32	28	1704880	12	31	1709941	34	30	1718852	36	2	1920161	16	15
1676892	14	9	1704880	34	45	1713091	30	18	1719363	36	5	1920397	16	37
1676892	16	26	1704881	30	20	1713523	12	23	1910531	2	7	1920397	32	3
1678435	10	8	1704977	20	9	1713523	34	28	1910531	18	8	1920415	28	21
1678435	28	8	1704982	34	41	1713540	34	1	1910531	22	21	1920415	32	21
1678435	32	10	1704983	32	20	1713621	30	19	1910531	26	5	1921176	16	28
1678435	34	34	1705010	20	10	1713624	12	26	1916622	14	14	1921210	14	7
1679163	20	1	1705063	2	11	1713624	30	17	1916622	16	9	1921210	14	25

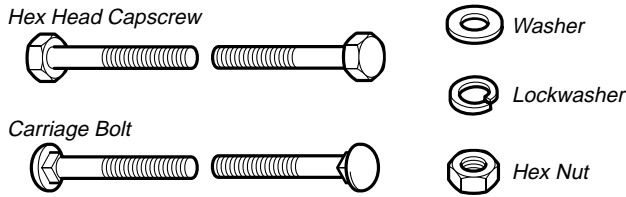
## Part Number Index by Page Number

Part No.	Page No	Ref No.	Part No.	Page No	Ref No.	Part No.	Page No	Ref No.	Part No.	Page No	Ref No.	Part No.	Page No	Ref No.
1921210	16	21	1927428	22	26	1933896	30	7						
1921210	18	10	1927557	10	29	1933896	34	10						
1921319	22	24	1927557	12	34	1933988	10	35						
1921319	34	33	1927557	28	29	1933988	28	35						
1921333	12	8	1928352	22	27	1933988	32	37						
1921333	12	15	1928691	10	30	1935048	20	19						
1921333	34	12	1928691	28	30	1935048	30	27						
1921677	16	17	1928691	32	30	1935048	32	1						
1921958	14	3	1928698	20	15	1960077	22	33						
1921958	16	33	1928919	2	8	1960096	22	34						
1921959	10	23	1928919	18	9	1960122	20	20						
1921959	28	23	1928919	22	28	1960185	20	21						
1921959	32	5	1928919	26	6	1960221	22	35						
1921965	36	4	1930531	2	6	1960223	12	30						
1921966	22	25	1930531	18	7	1960223	34	44						
1921969	10	21	1930531	22	29	1960233	30	29						
1921969	34	17	1930531	26	7	1960251	28	36						
1921971	30	33	1930561	14	31	1960251	32	25						
1921977	14	17	1930561	18	16	1960252	2	4						
1921977	16	19	1930591	30	24	1960252	10	37						
1922130	14	30	1930600	30	21	1960252	18	5						
1922130	18	15	1930641	2	3	1960252	22	36						
1922134	16	27	1930641	10	31	1960252	26	9						
1922648	24	4	1930641	18	6	1960252	28	37						
1922755	10	39	1930641	26	8	1960252	32	2						
1922755	12	35	1930641	28	31	1960256	10	38						
1923114	14	2	1930641	32	4	1960256	28	38						
1923325	34	6	1930642	22	30	1960256	32	39						
1923341	28	24	1930644	14	5	1960318	34	37						
1923341	32	18	1930651	14	11	1960339	10	25						
1923362	16	10	1930651	16	25	1960371	20	22						
1923362	30	13	1931277	10	40	1960373	34	43						
1923362	34	38	1931277	12	4	1960381	22	37						
1923903	24	4	1931277	30	5	1960399	22	38						
1924009	10	24	1931277	34	8	1960400	22	39						
1924009	32	33	1931332	4	5	1960404	12	5						
1924356	10	36	1931332	6	6	1960404	30	6						
1924361	28	25	1931332	8	6	1960404	34	9						
1924361	32	14	1931332	20	16	1960472	10	22						
1924874	10	26	1931333	10	32	1960472	28	22						
1924874	28	26	1931333	12	1	1960472	32	8						
1924874	32	11	1931333	22	31	1960520	34	47						
1924940	10	27	1931333	28	32	1960565	10	42						
1924940	12	22	1931333	30	22	1960565	12	29						
1924940	14	10	1931333	32	7									
1924940	14	26	1931335	34	27									
1924940	16	24	1931337	30	16									
1924940	18	11	1931338	20	17									
1924940	28	27	1931339	20	18									
1924940	30	34	1931355	10	33									
1924940	32	22	1931355	28	33									
1924940	32	26	1931355	32	9									
1924940	34	18	1931942	10	7									
1925003	10	28	1933263	28	34									
1925003	28	28	1933263	32	24									
1925003	32	41	1933468	30	15									
1925003	34	32	1933886	22	32									
1925205	4	6	1933896	12	6									



# Hardware Identification & Torque Specifications

## Common Hardware Types

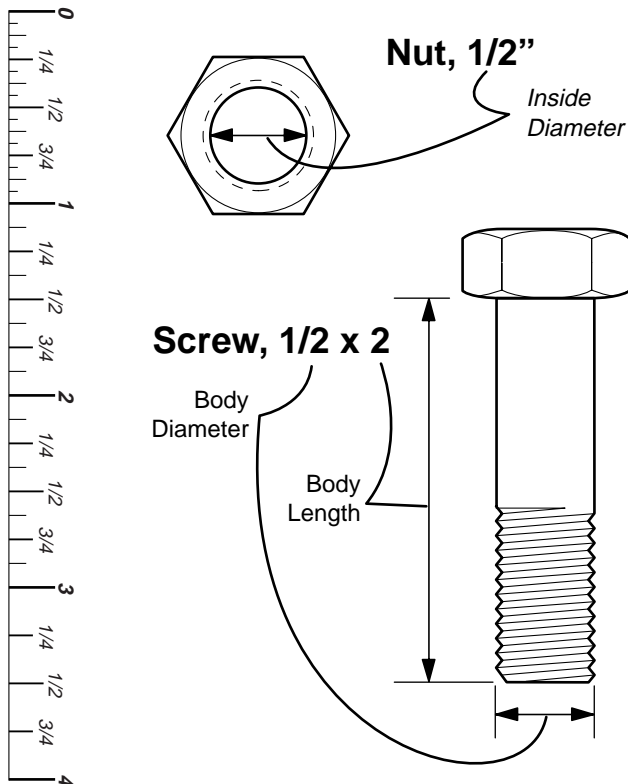


## Standard Hardware Sizing

When a washer or nut is identified as **1/2"**, this is the *Nominal size*, meaning the *inside diameter* is 1/2 inch; if a second number is present it represent the *threads per inch*

When bolt or capscrew is identified as **1/2 - 16 x 2"**, this means the *Nominal size*, or *body diameter* is 1/2 inch; the second number represents the *threads per inch* (16 in this example, and the final number is the *body length* of the bolt or screw (in this example 2 inches long).

**The guides and ruler furnished below are designed to help you select the appropriate hardware and tools.**



## Torque Specification Chart

FOR STANDARD MACHINE HARDWARE (Tolerance ± 20%)

Hardware Grade	No Marks		SAE Grade 2		SAE Grade 5		SAE Grade 8	
	in/lbs	Nm.	in/lbs	Nm.	in/lbs	Nm.	in/lbs	Nm.
8-32	19	2.1	30	3.4	41	4.6		
8-36	20	2.3	31	3.5	43	4.9		
10-24	27	3.1	43	4.9	60	6.8		
10-32	31	3.5	49	5.5	68	7.7		
1/4-20	66	7.6	8	10.9	12	16.3		
1/4-28	76	8.6	10	13.6	14	19.0		
5/16-18	11	15.0	17	23.1	25	34.0		
5/16-24	12	16.3	19	25.8	27	34.0		
3/8-16	20	27.2	30	40.8	45	61.2		
3/8-24	23	31.3	35	47.6	50	68.0		
7/16-14	30	40.8	50	68.0	70	95.2		
7/16-20	35	47.6	55	74.8	80	108.8		
1/2-13	50	68.0	75	102.0	110	149.6		
1/2-20	55	74.8	90	122.4	120	163.2		
9/16-12	65	88.4	110	149.6	150	204.0		
9/16-18	75	102.0	120	163.2	170	231.2		
5/8-11	90	122.4	150	204.0	220	299.2		
5/8-18	100	136	180	244.8	240	326.4		
3/4-10	160	217.6	260	353.6	386	525.0		
3/4-16	180	244.8	300	408.0	420	571.2		
7/8-9	140	190.4	400	544.0	600	816.0		
7/8-14	155	210.8	440	598.4	660	897.6		
1-8	220	299.2	580	788.8	900	1,244.0		
1-12	240	326.4	640	870.4	1,000	1,360.0		

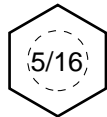
### NOTES

- These torque values are to be used for all hardware excluding: locknuts, self-tapping screws, thread forming screws, sheet metal screws and socket head setscrews.
- Recommended seating torque values for locknuts:
  - for prevailing torque locknuts - use 65% of grade 5 torques.
  - for flange whizlock nuts and screws - use 135% of grade 5 torques.
- Unless otherwise noted on assembly drawings, all torque values must meet this specification.

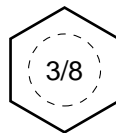
## Wrench & Fastener Size Guide



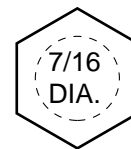
1/4" Bolt or Nut  
Wrench—7/16"



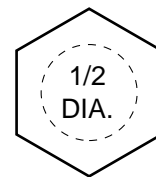
5/16" Bolt or Nut  
Wrench—1/2"



3/8" Bolt or Nut  
Wrench—9/16"



7/16" Bolt or Nut  
Wrench (Bolt)—5/8"  
Wrench (Nut)—11/16"



1/2" Bolt or Nut  
Wrench—3/4"



---

MANUFACTURING, INC.

500 N Spring Street / PO Box 997  
Port Washington, WI 53074-0997 USA

© Copyright 1998 Simplicity Manufacturing, Inc.  
All Rights Reserved. Printed In USA.

