



# Parts Manual



## ZT3000

### Series Zero-Turn Rider & Mower Deck

#### 24HP Product

Mfg. No.	Description
5900660	ZT3000B2444, 24HP B&S Rider w/44" Mower
5900662	ZT3000B2450, 24HP B&S Rider w/50" Mower
5900684	ZT3000B2450CE, 24HP B&S Rider w/50" Mower (CE/Export)



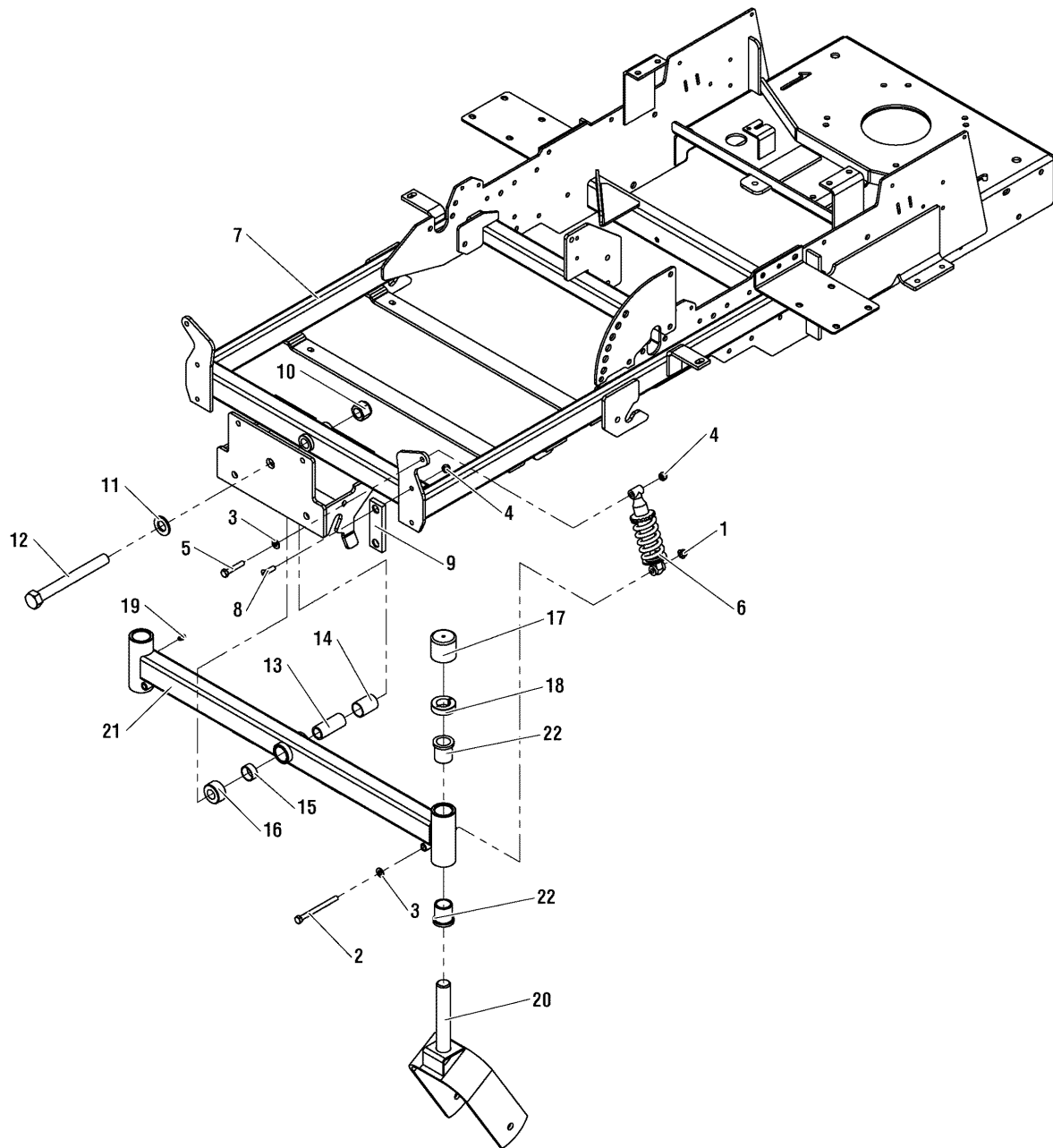
<b>PRODUCT COMPONENTS</b>	<b>PAGES</b>
Main Frame & Front Suspension Group .....	4
Rear Bumper Group .....	6
Engine & PTO Group - 24 HP Briggs & Stratton .....	8
Instrument Control Panel Group .....	10
Pump Drive Group .....	12
Motion Control Group .....	14
Transmission SERVICE PARTS .....	16
Hydraulic Group .....	18
Electrical Group .....	20
Seat & Floor Plate Group .....	22
Fuel Tank & Replacement Parts Group .....	24
Parking Brake Group .....	26
Deck Lift Group .....	28
Wheel & Tire Group .....	32
Decals Group - Brand & Model .....	34
Decals Group - Safety & Common .....	36
Export Decals Group - Safety & Common .....	38
44" & 50" Mower Deck - Belt & Idler Group .....	40
44" & 50" Mower Deck - Housing, Arbors, & Blades Group .....	42
44" Mower Deck - Rollers Group .....	44
50" Mower Deck - Rollers Group .....	48
<b>Torque Specification Chart .....</b>	<b>Inside Back Cover</b>

## Main Frame & Front Suspension Group

NOTE: Unless noted otherwise, use the standard hardware torque specification chart.

5300938

5300938



The above parts group applies to the following Mfg. Nos.:

5900660 - ZT3000B24

5900662 - ZT3000B24

5900684 - ZT3000B24

## Main Frame & Front Suspension Group

REF NO.	PART NO.	QTY.	DESCRIPTION
1	5025392SM	2	NUT, 5/16-18 HEX NYLOCK FLANGE
2	5025011X30SM	2	BOLT, 5/16-18 X 3-3/4 GD5
3	5025155SM	4	WASHER, 5/16 SAE
4	5025057SM	6	NUT, 5/16-18 HEX NYLON LOCK
5	5025011X14SM	2	BOLT, 5/16-18 X 1-3/4 GD5 YZ
6	5023213SM	2	SHOCK
7	5402816CSM	1	WELD, MAINFRAME, SIMPLICITY ZT, ORG
8	5025303SM	4	SCREW, 5/16-18 X 1 FLAT HD SC
9	5100930SM	2	PAD, FRICTION, .375 X 1.25 X 4.00
10	5025284SM	1	NUT, 3/4-16 HEX NYLON LOCK
11	5025160SM	1	WASHER, 3/4 SAE
12	5025265X56SM	1	BOLT, 3/4-16 X 7" YZ GD5
13	5047489SM	1	SPACER, .75 X 1.00 X 2.38
14	5022852SM	1	PIVOT BEARING, 1.00" X 1.125" OD X 1.50"
15	5100358SM	1	PIVOT BEARING, 1.00 X 1.125 OD X .50
16	5400756SM	1	SPACER, .76X 1.50 X .79
17	5023214SM	2	CAP, VINYL 1.687 X 1-1/2
18	5020602SM	2	COLLAR, 1" SPLIT
19	5020095SM	2	GREASE FITTING, 1/4-28 STRAIGHT
20	5048775CSM	2	WELD,CASTER YOKE
21	5400962CSM	1	WELD, PIVOTING FRONT END - ORG
22	5021541SM	4	BUSHING, FLANGE

### Footnotes

The above parts group applies to the following Mfg. Nos.:

5900660 - ZT3000B24

5900662 - ZT3000B24

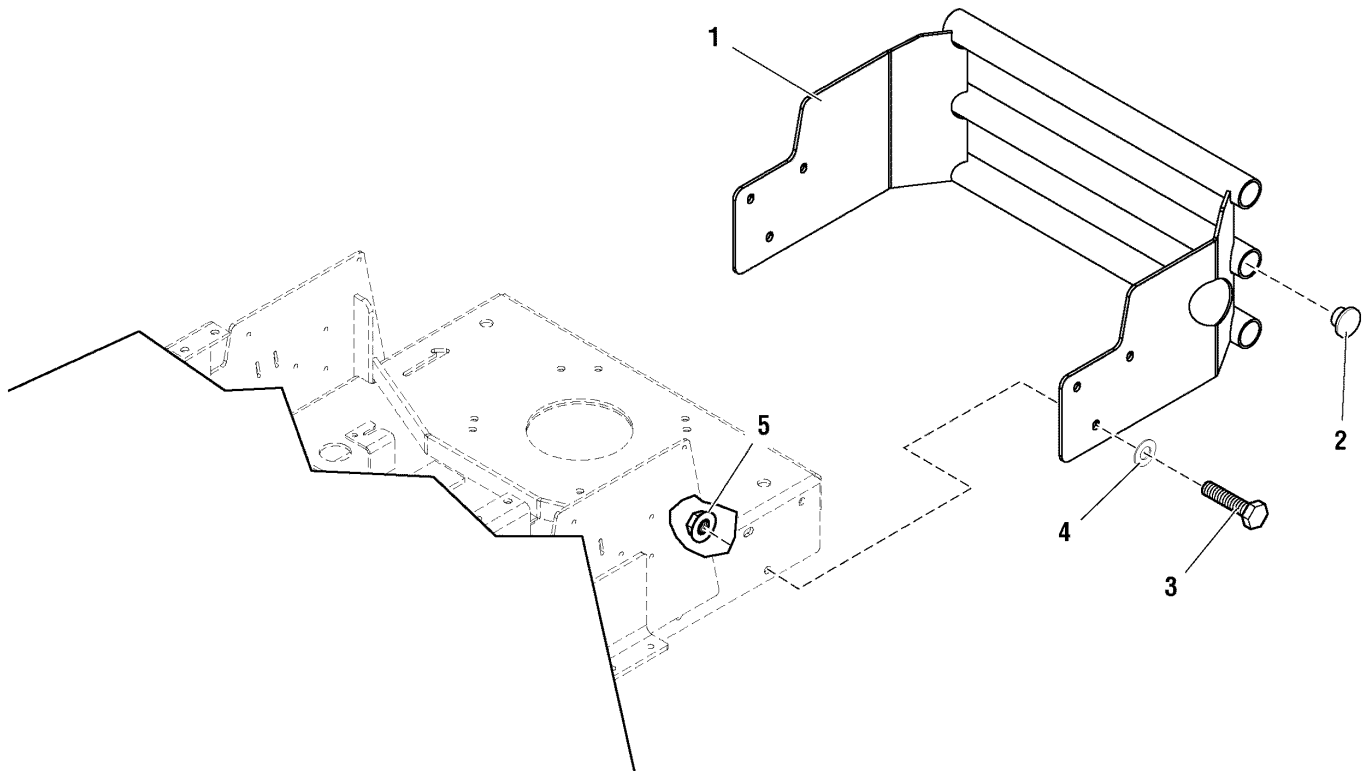
5900684 - ZT3000B24

## Rear Bumper Group

NOTE: Unless noted otherwise, use the standard hardware torque specification chart.

5300939

5300939



The above parts group applies to the following Mfg. Nos.:

5900660 - ZT3000B24

5900662 - ZT3000B24

5900684 - ZT3000B24

## **Rear Bumper Group**

---

<b>REF NO.</b>	<b>PART NO.</b>	<b>QTY.</b>	<b>DESCRIPTION</b>
1	5402844CSM	1	WELD, BUMPER - CONS Z - ORG
2	5023484SM	6	PLUG, PANEL, 1.25 - BLACK
3	5025013X8SM	6	BOLT, 3/8-16 X 1 GD5 YZ
4	5025156SM	6	WASHER, 3/8 SAE
5	5025394SM	6	NUT, 3/8-16 HEX NYLOCK FLANGE

## **Footnotes**

---

**The above parts group applies to the following Mfg. Nos.:**

5900660 - ZT3000B24

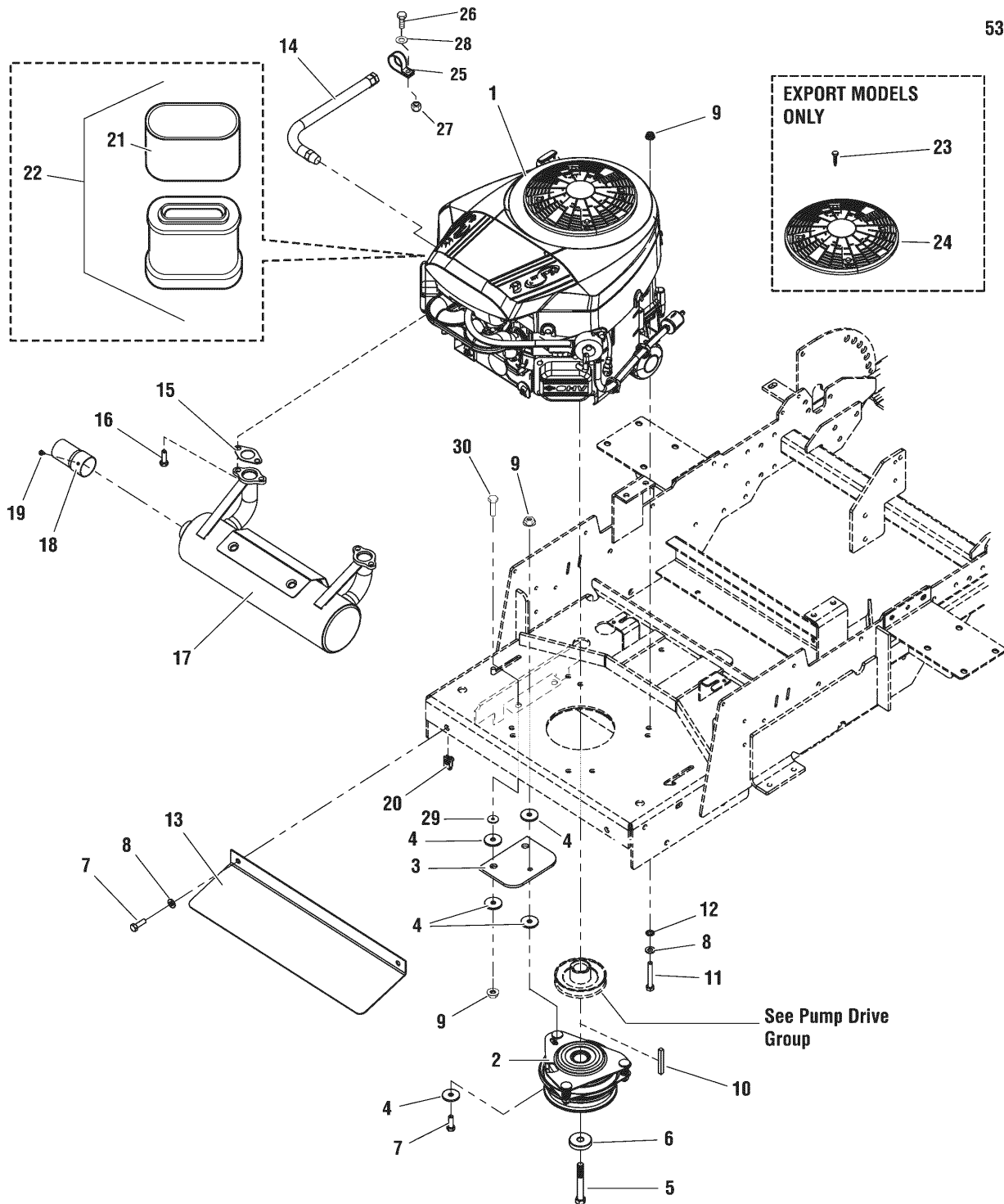
5900662 - ZT3000B24

5900684 - ZT3000B24

# Engine & PTO Group - 24 HP Briggs & Stratton

NOTE: Unless noted otherwise, use the standard hardware torque specification chart.

5300943



The above parts group applies to the following Mfg. Nos.:

5900660 - ZT3000B24

5900662 - ZT3000B24

5900684 - ZT3000B24



## Engine & PTO Group - 24 HP Briggs & Stratton

REF NO.	PART NO.	QTY.	DESCRIPTION
1	--	1	* ENGINE, 24HP B&S, ELS Mod. #44M777-0121-E1
2	5023100SM	1	CLUTCH,#51110100,ELECTRIC, 1" SHAFT
3	5043636SM	1	CLUTCH ANCHOR PAD
4	5044617SM	5	WASHER, .34 X 1.25 X 10 GA
5	5023253SM	1	CAPSCREW, CRANKSHAFT, 7/16-20 x 3-1/4"YZ
6	5042132SM	1	SPACER, .45 X 1.62 X .37
7	5025011X8SM	5	BOLT, 5/16-18 X 1 GD5 YZ
8	5025155SM	6	WASHER, 5/16 SAE
9	5025392SM	7	NUT, 5/16-18 HEX NYLOCK FLANGE
10	5050407X18SM	1	KEY, 1/4" SQ. X 2 1/4
11	5025011X18SM	4	BOLT, 5/16-18 X 2-1/4" GD5 YZ
12	5025188SM	4	WASHER, 5/16" INT. TOOTH LOCK
13	5403059CSM	1	PLATE, HEAT SHIELD - ORG
14	5048681SM	1	HOSE, OIL DRAIN
15	690970	2	GASKET, EXHAUST
16	690341	4	SCREW, SEM HEX HEAD
17	5100907SM	1	MUFFLER, B&S-ELS 22-26HP
18	5100969SM	1	EXTENSION, TAILPIPE, 3"
19	5021808X8SM	2	SCREW
20	5022308SM	2	BODY CLIP, 5/16-18 X 1/2 DEEP
21	792303	1	PRE CLEANER (SV)
22	792105	1	AIR CLEANER W/ PRE CLEANER (SV) (INCLUDES REF NO 21)
23	95050	1	SCREW, CROSS RECESSED THREAD (EXPORT MODELS ONLY)
24	793821	1	COVER, STATIC / LABEL ASSEMBLY (EXPORT MODELS ONLY)
25	5021500SM	1	CLAMP, VINYL INSULATED (NOT SHOWN - FOR OIL DRAIN HOSE)
26	5025010X6SM	1	BOLT, 1/4-20 X 3/4 GD5 YZ (NOT SHOWN - FOR OIL DRAIN HOSE)
27	5025391SM	1	NUT, 1/4-20 HEX NYLOCK FLANGE (NOT SHOWN - FOR OIL DRAIN HOSE)
28	50251541SM	1	WASHER, 1/4 SAE (NOT SHOWN - FOR OIL DRAIN HOSE)
29	5025139	2	NUT, 5/16-18 HEX SERRATED FLANGE (LARGE)
30	5025011X10	2	BOLT, 5/16-18 X 1-1/4 GD5 YZ
31	696854	1	OIL FILTER (SV) (NOT SHOWN)

### Footnotes

The above parts group applies to the following Mfg. Nos.:

5900660 - ZT3000B24

5900662 - ZT3000B24

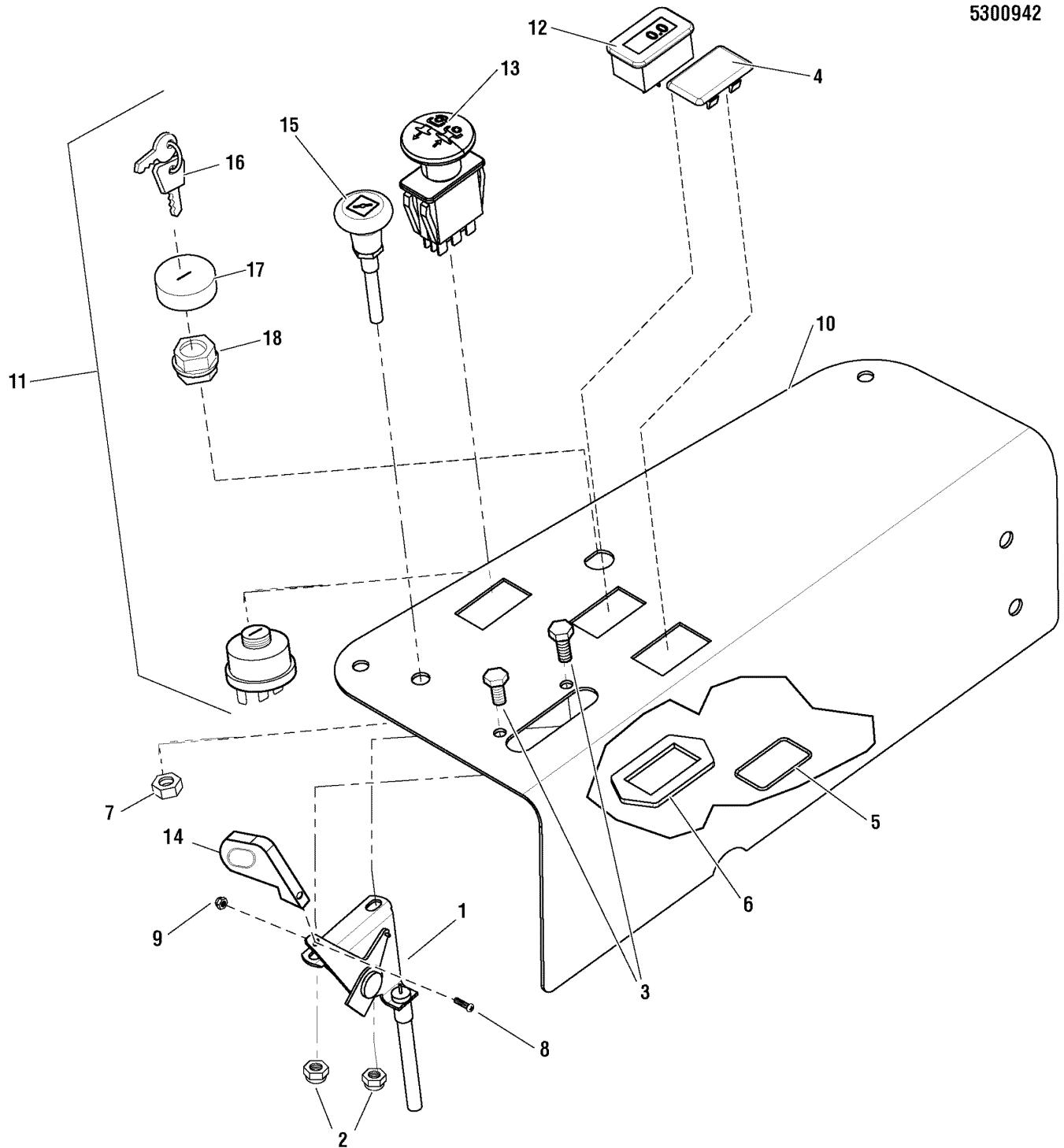
5900684 - ZT3000B24

## Instrument Control Panel Group

NOTE: Unless noted otherwise, use the standard hardware torque specification chart.

5300942

5300942



The above parts group applies to the following Mfg. Nos.:

5900660 - ZT3000B24

5900662 - ZT3000B24

5900684 - ZT3000B24

## ***Instrument Control Panel Group***

---

<b>REF NO.</b>	<b>PART NO.</b>	<b>QTY.</b>	<b>DESCRIPTION</b>
1	5100182SM	1	CABLE, THROTTLE CONTROL, 36"
2	5025095SM	2	NUT, 1/4-20 HEX NYLON LOCK
3	5025010X6SM	2	BOLT, 1/4-20 X 3/4 GD5 YZ
4	1709188SM	1	PLUG, .820X1.44 HOLE, BLACK PLASTIC
5	5022269SM	1	O-RING, 7/8 ID X 1/16 W
6	5022222SM	1	RING, SWITCH RETAINER
7	5025035SM	1	NUT, 3/8-24 HEX
8	5025270SM	1	SCREW, #10-24 X 1" RS
9	5025271SM	1	NUT, #10-24 HEX NYLON LOCK
10	5402842ASM	1	PLATE, CONTROL PANEL - BLACK
11	5020927SM	1	SWITCH, IGNITION, 6 POST
12	5100996SM	1	HOUR METER, W/ SUPPRESSOR
13	5022180SM	1	SWITCH, BLADE ENGAGEMENT
14	1725337SM	1	KNOB-SLOTTED THROTTLE
15	5047779SM	1	CABLE, CHOKE CONTROL, 51"
16	5022789SM	1	KEY, IGNITION, MOLDED SET (SV) (SET OF TWO)
17	5022790SM	1	COVER (SV)
18	5022791SM	1	PLASTIC NUT (SV)

## **Footnotes**

---

**The above parts group applies to the following Mfg. Nos.:**

5900660 - ZT3000B24

5900662 - ZT3000B24

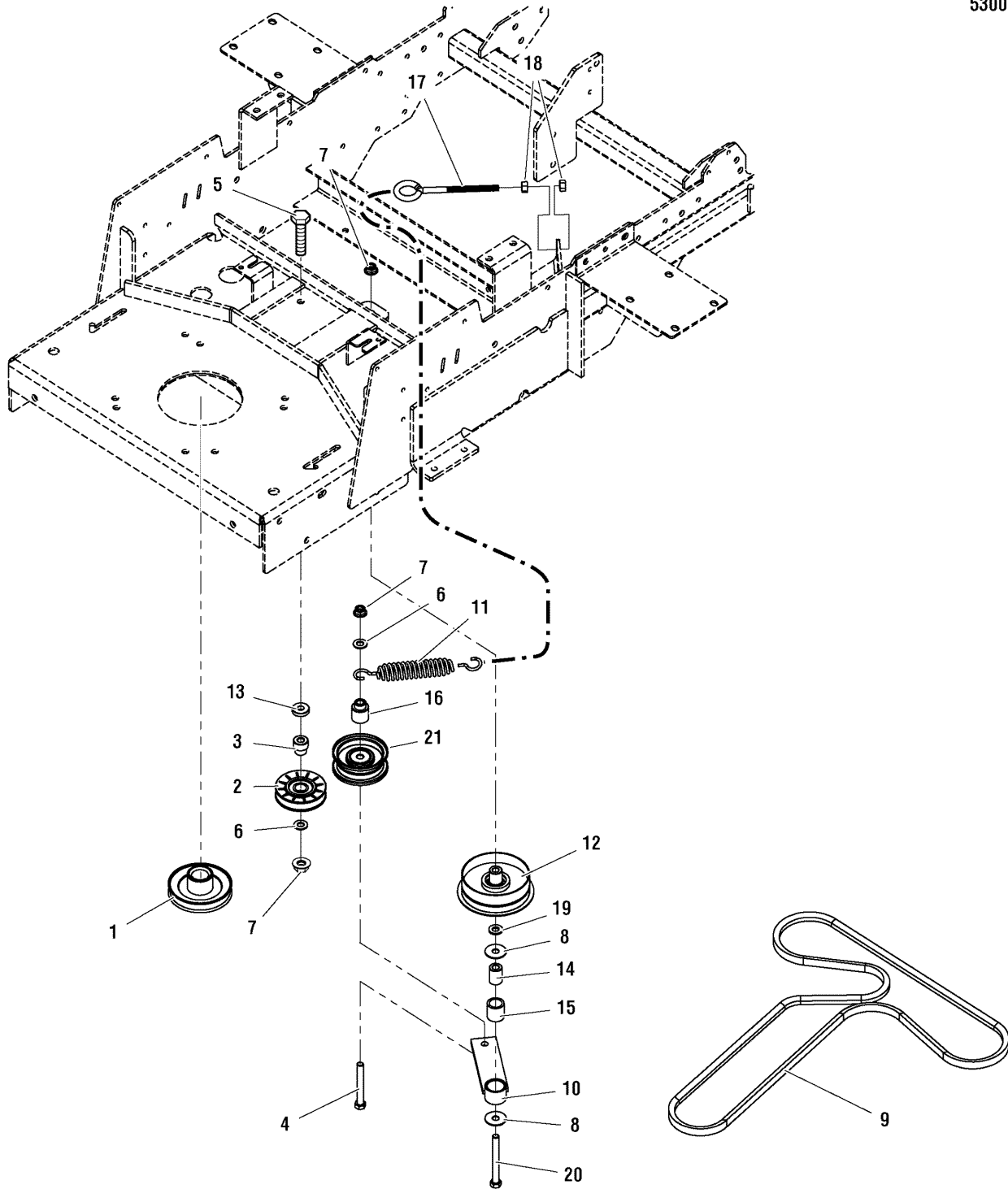
5900684 - ZT3000B24

# Pump Drive Group

NOTE: Unless noted otherwise, use the standard hardware torque specification chart.

5300944

5300944



The above parts group applies to the following Mfg. Nos.:

5900660 - ZT3000B24

5900662 - ZT3000B24

5900684 - ZT3000B24

## **Pump Drive Group**

<b>REF NO.</b>	<b>PART NO.</b>	<b>QTY.</b>	<b>DESCRIPTION</b>
1	5101296SM	1	PULLEY, CRANKSHAFT
2	5021079SM	1	IDLER PULLEY
3	5049184SM	1	SPACER, HYDRO PULLEY
4	5025013X24SM	1	BOLT, 3/8-16 X 3 GD5 YZ
5	5025013X16SM	1	BOLT, 3/8-16 X 2 GD5 YZ
6	5025156SM	2	WASHER, 3/8 SAE
7	5025394SM	3	NUT, 3/8-16 HEX NYLOCK FLANGE
8	5025165SM	2	WASHER, 3/8 FENDER
9	5101033SM	1	BELT, 79.46 EL, HYDRO DRIVE
10	5402847CSM	1	WELD, IDLER, PUMP DRIVE - ORG
11	5022847SM	1	SPRING, EXTENSION, SWIVEL END
12	5101080SM	1	PULLEY, IDLER, SINGLE FLANGE, 4" OD
13	5044960SM	1	SPACER, .39 X 1.00 X .25
14	5042658SM	1	SPACER, .39 X .75 X 1.06
15	5020876BSM	1	BUSHING, BRASS, 3/4 X 1 X 1
16	5045943SM	1	SPACER, SHOULDER
17	5021812SM	1	EYE BOLT, 3/8-16 X 5", 1" EYE
18	5025034SM	2	NUT, 3/8-16 HEX
19	5025293SM	1	WASHER, 3/8 GD.9 FLAT
20	5025013X28SM	1	BOLT, 3/8-16 X 3-1/2 GD5 YZ
21	5101105SM	1	PULLEY, IDLER, FLAT, 2.75 DIA X .376 ID

### **Footnotes**

---

**The above parts group applies to the following Mfg. Nos.:**

5900660 - ZT3000B24

5900662 - ZT3000B24

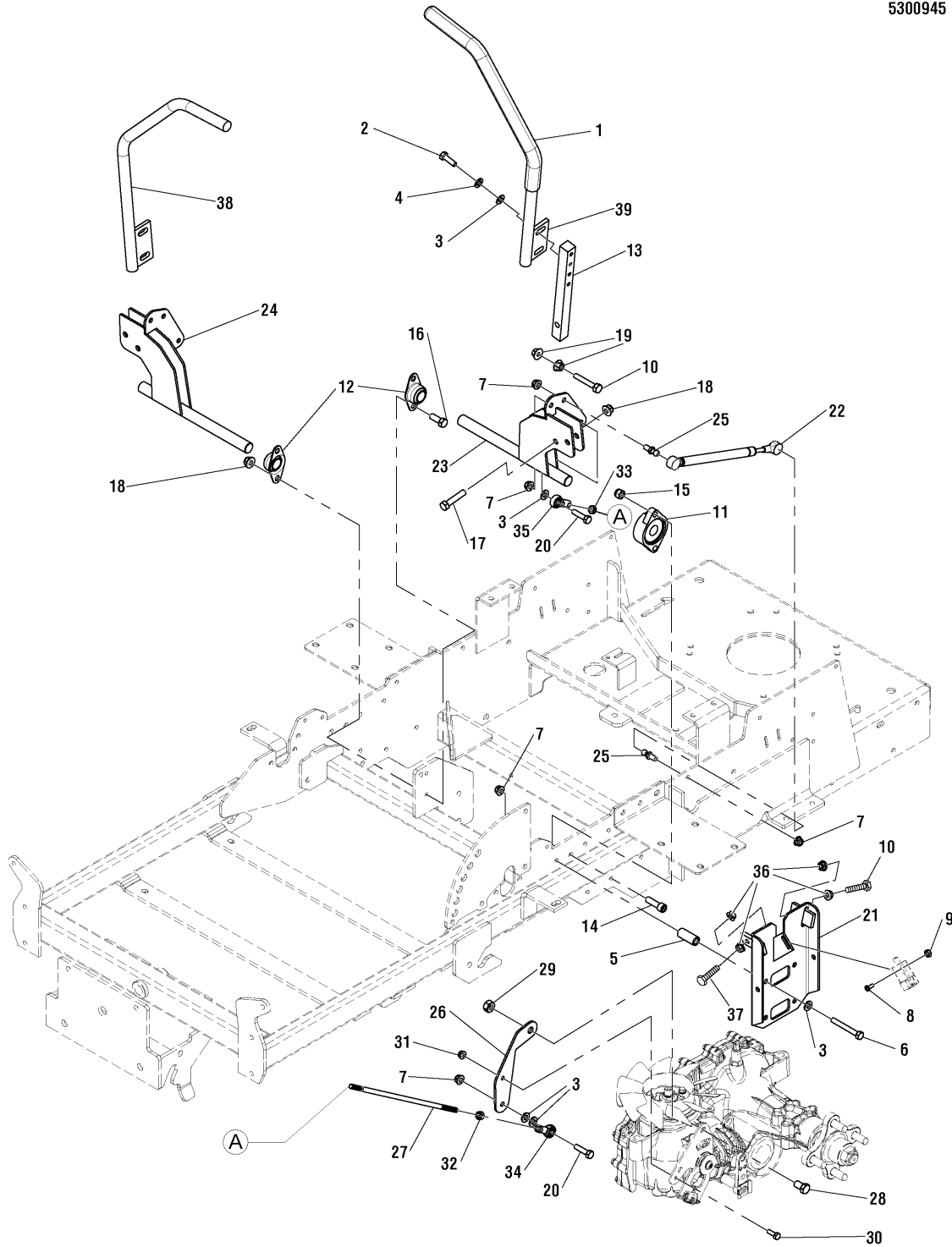
5900684 - ZT3000B24

# Motion Control Group

NOTE: Unless noted otherwise, use the standard hardware torque specification chart.

5300945

5300945



The above parts group applies to the following Mfg. Nos.:

5900660 - ZT3000B24

5900662 - ZT3000B24

5900684 - ZT3000B24

## Motion Control Group

REF NO.	PART NO.	QTY.	DESCRIPTION
1	5022068SM	2	GRIP, FOAM, 3/4 ID, 16 LONG
2	5025011X8SM	4	BOLT, 5/16-18 X 1 GD5 YZ
3	5025155SM	18	WASHER, 5/16 SAE
4	5025170SM	4	WASHER, 5/16 LOCK YZ
5	5048264SM	8	SPACER, .39 X .63 X 1.50
6	5025011X20SM	8	BOLT, 5/16-18 X 2-1/2" GD5 YZ
7	5025392SM	16	NUT, 5/16-18 HEX NYLOCK FLANGE
8	5025179X4SM	4	SCREW, #10-24 X 1/2 ROUND PHILLIPS
9	5025029SM	4	NUT, #10-24 HEX
10	5025055X16SM	4	BOLT, 5/16-18 X 2 GD5 TFL
11	5021499SM	2	BEARING, FLANGE
12	5021098SM	2	BEARING, BRONZE FLANGE, 3/4
13	5047004SM	2	MOUNT, CONTROL ARM
14	5025327SM	4	BOLT, 3/8-16 X 1-1/4 SHCS
15	5025096SM	4	NUT, 3/8-16 HEX NYLON LOCK
16	5025013X8SM	2	BOLT, 3/8-16 X 1 GD5 YZ
17	5025013X14SM	4	BOLT, 3/8-16 X 1-3/4 GD5
18	5025394SM	6	NUT, 3/8-16 HEX NYLOCK FLANGE
19	5025139SM	4	NUT, 5/16-18 HEX SERRATED FLANGE (LARGE)
20	5025011X10SM	4	BOLT, 5/16-18 X 1-1/4 GD5 YZ
21	5402852CSM	2	WELD, PLATE, NEUTRAL - ORG
22	5100940SM	2	DAMPENER, CONTROL, #(P6709/P3610)
23	5402851CSM	1	WELD, CONTROL SHAFT, LH - ORG
24	5402850CSM	1	WELD, CONTROL SHAFT, RH -ORG
25	5100941SM	4	BALL STUD, 5/16 X .50, # PC-477-2)
26	5402872CSM	2	PLATE, CONTROL LINK, TRANSAXLE - ORG
27	5101057SM	2	ROD, HYDRO LINKAGE - CONZ - YZ
28	5025015X6SM	2	BOLT, 7/16-14 X 3/4, GD 5 YZ
29	5025044SM	2	NUT, 7/16-14 HEX TOP LOCK
30	5025010X6SM	2	BOLT, 1/4-20 X 3/4 GD5 YZ
31	5025391SM	2	NUT, 1/4-20 HEX NYLOCK FLANGE
32	5023212SM	2	NUT, 5/16-24 HEX, LH
33	5023216SM	2	NUT, 5/16-24 JAM
34	5022628SM	2	BALL JOINT, 5/16-24, LH FEMALE
35	5021146SM	2	BALL JOINT, 5/16-24, FEMALE
36	5025127SM	8	NUT, 5/16-18 HEX SERRATED FLANGE (SMALL)
37	5025055X12SM	2	BOLT, 5/16-18 X 1-1/2" GD5 TFL
38	5047055CSM	1	WELD, HANDLE MOTION CONTROL-LH
39	5047056CSM	1	WELD, HANDLE MOTION CONTROL-RH

### Footnotes

The above parts group applies to the following Mfg. Nos.:

5900660 - ZT3000B24

5900662 - ZT3000B24

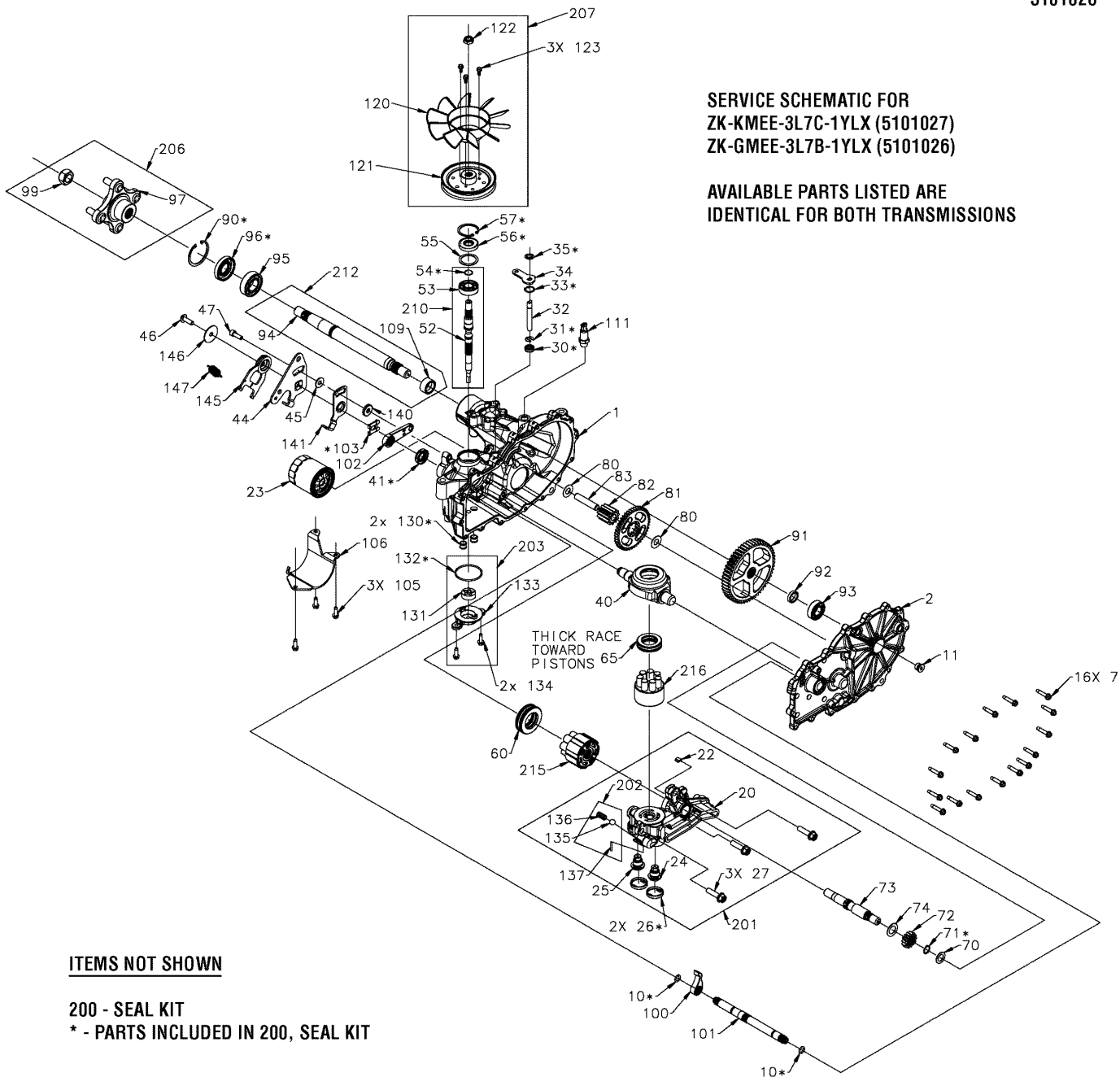
5900684 - ZT3000B24

# Transmission SERVICE PARTS

**NOTE:** Unless noted otherwise, use the standard hardware torque specification chart.

5101026

5101026



The above parts group applies to the following Mfg. Nos.:

- 5900660 - ZT3000B24
- 5900662 - ZT3000B24
- 5900684 - ZT3000B24



## **Transmission SERVICE PARTS**

---

<b>REF NO.</b>	<b>PART NO.</b>	<b>QTY.</b>	<b>DESCRIPTION</b>
23	5101026X1SM	1	OIL FILTER
41	5101026X2SM	1	SEAL, LIP, 18 X 32 X 7
56	5101026X3SM	1	SEAL, LIP, 17 X 40 X 7
57	5101026X4SM	1	RING, RET 2.06 INT
95	5101026X5SM	1	BEARING, BALL, 1.0 X 52 X 15 OPEN 6205M
120	5101026X6SM	1	FAN, 7", 10 BLADE
121	5101026X7SM	1	PULLEY, 4.5 INCH
200	5101026X8SM	1	KIT SEAL
210	5101026X9SM	1	KIT, INPUT SHAFT

### **Footnotes**

---

**The above parts group applies to the following Mfg. Nos.:**

5900660 - ZT3000B24

5900662 - ZT3000B24

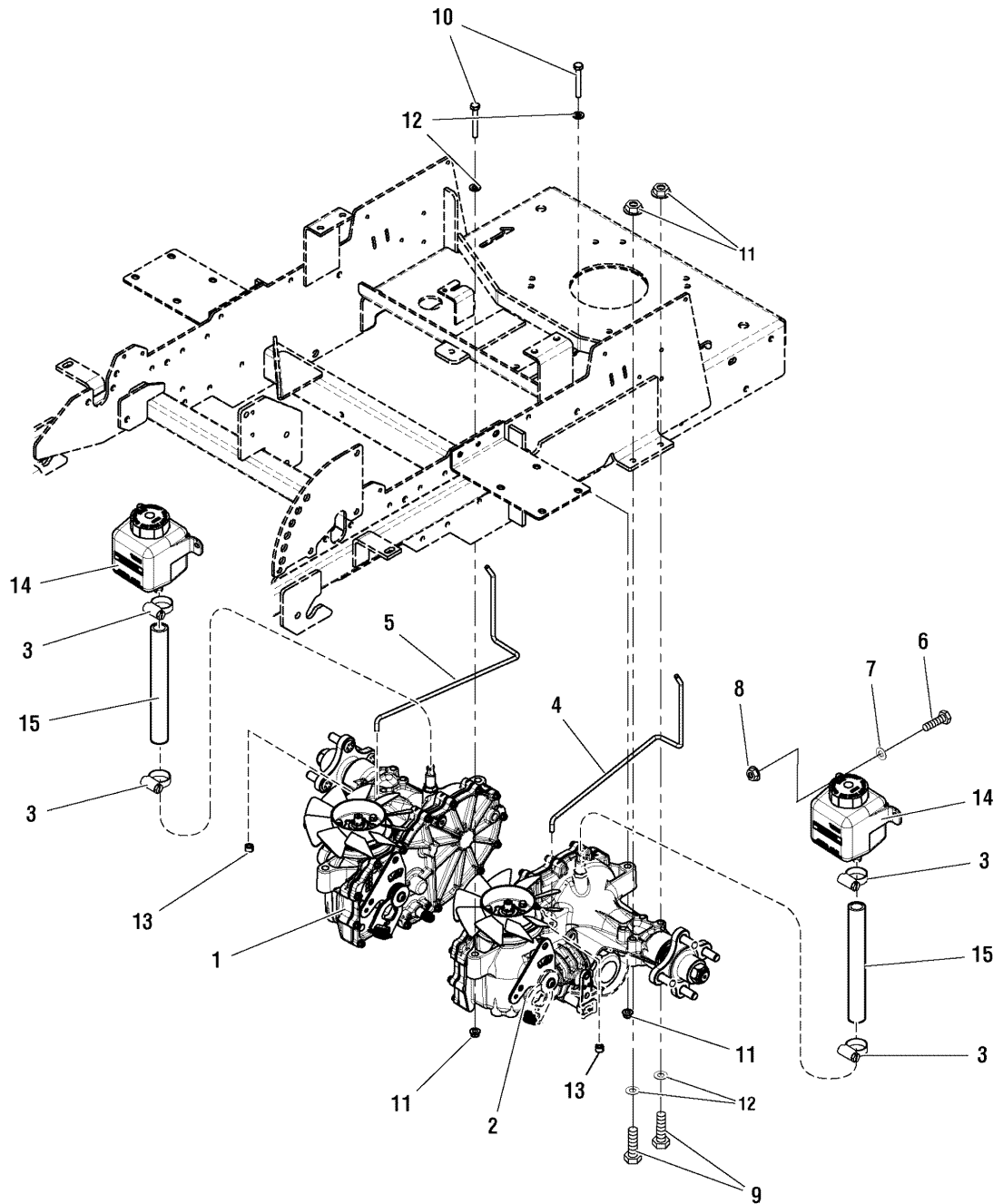
5900684 - ZT3000B24

## Hydraulic Group

NOTE: Unless noted otherwise, use the standard hardware torque specification chart.

5300946

5300946



The above parts group applies to the following Mfg. Nos.:

5900660 - ZT3000B24

5900662 - ZT3000B24

5900684 - ZT3000B24

## Hydraulic Group

---

REF NO.	PART NO.	QTY.	DESCRIPTION
1	5101026SM	1	TRANSMISSION, RH HYDRO-GEAR
2	5101027SM	1	TRANSMISSION, LH, HYDRO-GEAR
3	5025474SM	4	CLAMP, HOSE, 1/2
4	5101060SM	1	ROD, DUMP VALVE, LH - CONZ
5	5101061SM	1	ROD, DUMP VALVE, RH - CONZ
6	5025010X6SM	4	BOLT, 1/4-20 X 3/4 GD5 YZ
7	5025154SM	4	WASHER, 1/4 SAE
8	5025391SM	4	NUT, 1/4-20 HEX NYLOCK FLANGE
9	5025011X24SM	4	BOLT, 5/16-18 X 3" GD5 YZ
10	5025011X18SM	4	BOLT, 5/16-18 X 2-1/4" GD5 YZ
11	5025392SM	8	NUT, 5/16-18 HEX NYLOCK FLANGE
12	5025155SM	8	WASHER, 5/16 SAE
13	5020047SM	2	COLLAR, 5/16" SET
14	5100473SM	2	RESERVOIR, HYDRO OIL, 350 ML
15	5050857X9SM	2	HOSE, 1/2" PUSH-ON, 9.00"

## Footnotes

---

**The above parts group applies to the following Mfg. Nos.:**

5900660 - ZT3000B24

5900662 - ZT3000B24

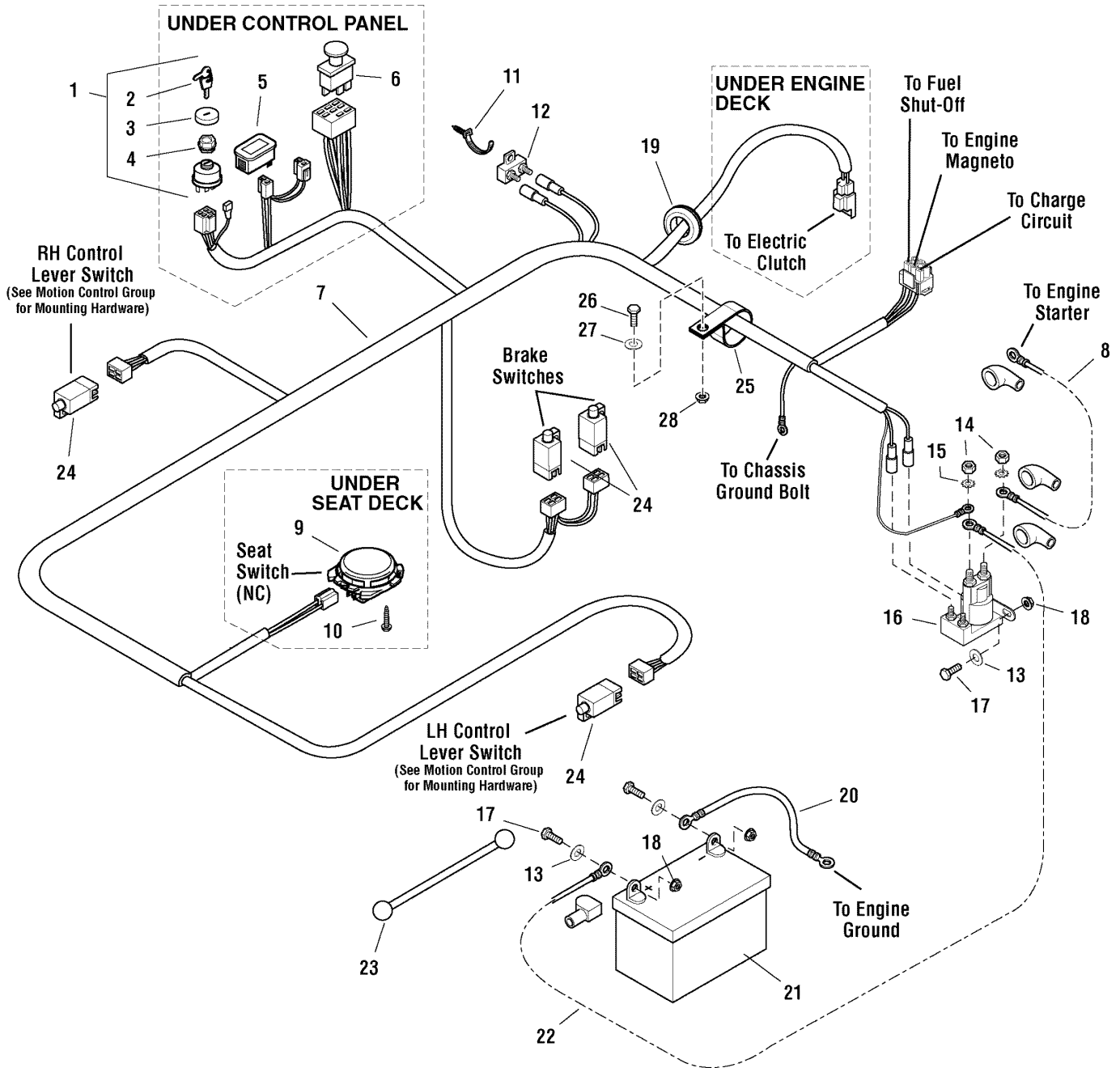
5900684 - ZT3000B24

# Electrical Group

NOTE: Unless noted otherwise, use the standard hardware torque specification chart.

5300947

rev. 00



The above parts group applies to the following Mfg. Nos.:

5900660 - ZT3000B24

5900662 - ZT3000B24

5900684 - ZT3000B24

## Electrical Group

REF NO.	PART NO.	QTY.	DESCRIPTION
1	5020927SM	1	SWITCH, IGNITION, (Includes Ref No. 2-4)
2	5022789SM	1	KEY, IGNITION MOLDED (SV) (Set of 2)
3	5022790SM	1	COVER (SV)
4	5022791SM	1	PLASTIC NUT (SV)
5	1725523SM	1	HOUR METER, DIGITAL (Includes Retaining Ring)
6	5022180SM	1	SWITCH, PTO
7	5402849SM	1	WIRE HARNESS, CONSUMER Z
8	5023488SM	1	BATTERY CABLE, POSITIVE, 22"
9	1716368SM	1	SWITCH, SEAT, GRAY, NC (BOLT IN)
9	5100541SM	1	SWITCH, SEAT, GRAY, NC (TWIST IN)
10	1960536SM	2	BOLT, HEX WASHER HEAD PLASTITE, 1/4 X 1/2
11	5021199SM	1	CABLE TIE-PUSH MOUNT
12	5023222SM	1	CIRCUIT BREAKER, 20A
13	5025154SM	4	WASHER, 1/4" SAE
14	5023216SM	2	NUT, HEX JAM, 5/16-24 (SV)
15	5023217SM	2	WASHER, LIGHT LOCK, 5/16 (SV)
16	1724815SM	1	SOLENOID-4 POLE 12 VOLT DC (TROMBETTA)
17	5025010X6SM	4	BOLT, 1/4-20 X 3/4" GD5 YZ
18	5025126SM	4	NUT, 1/4-20 HEX SERR. FLANGE
19	5023236SM	1	GROMMET, 3/4
20	5047690SM	1	BATTERY CABLE, NEGATIVE, 14"
21	-	1	BATTERY, WET (BCIU1, 340 CCA)
22	5041736SM	1	BATTERY CABLE, POSITIVE, 15"
23	1722009SM	1	STRAP-BLACK RUBBER
24	5022095SM	4	SWITCH, PLUNGER, N.O./N.C.
25	5023263SM	1	CLAMP, VINYL
26	5025013X8SM	1	BOLT, 3/8-16 X 1 GD5 YZ
27	5025156SM	1	WASHER, 3/8 SAE
28	5025394SM	1	NUT, 3/8-16 HEX, NYLOCK FLANGE

## Footnotes

The above parts group applies to the following Mfg. Nos.:

5900660 - ZT3000B24

5900662 - ZT3000B24

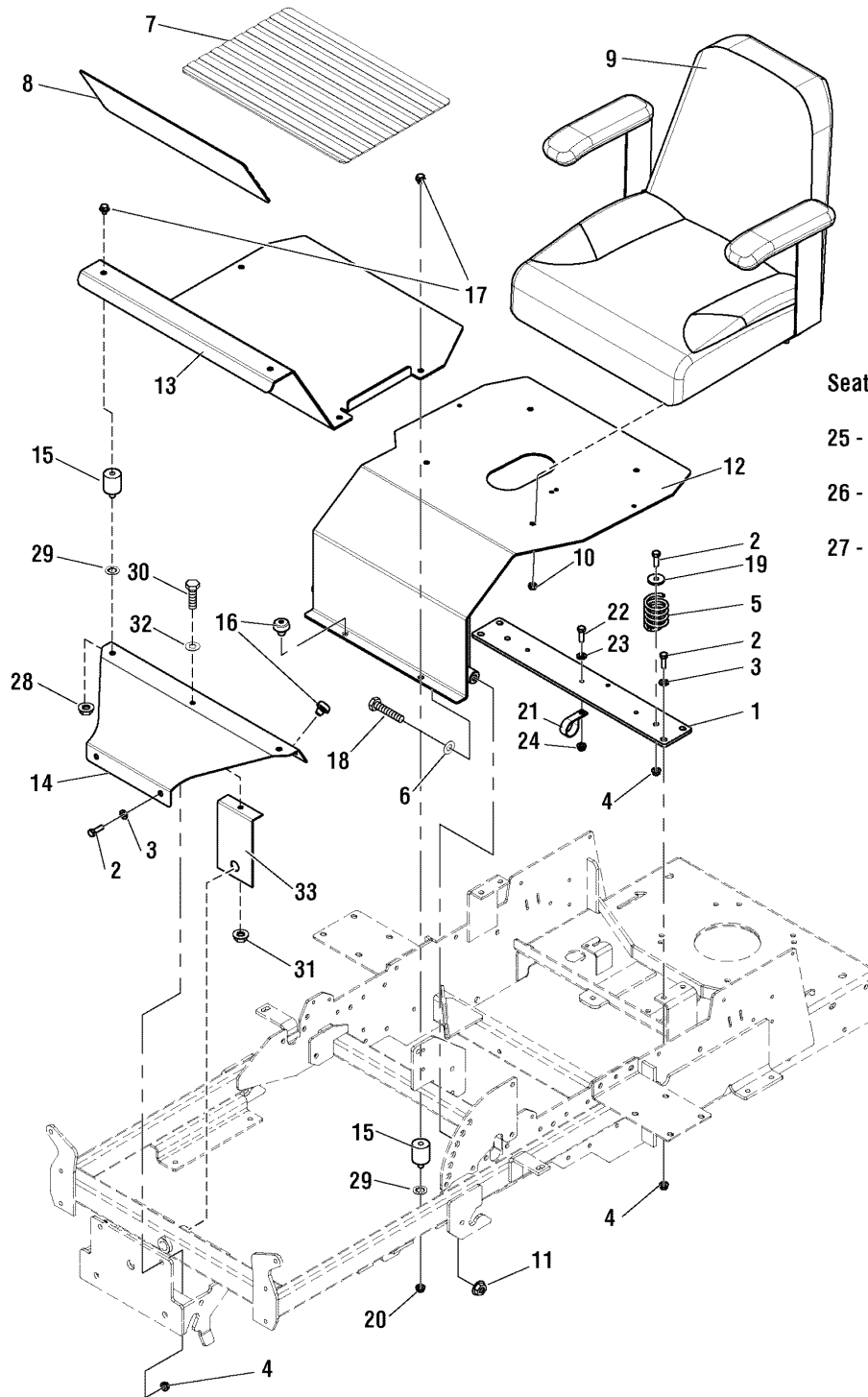
5900684 - ZT3000B24

## Seat & Floor Plate Group

NOTE: Unless noted otherwise, use the standard hardware torque specification chart.

5300940

5300940



### Seat Replacement Parts

25 - "Arm Rest (Set of Two)"

26 - "Spring, Seat Adjustment"

27 - "Kit, Seat Rails, Complete"

The above parts group applies to the following Mfg. Nos.:

5900660 - ZT3000B24

5900662 - ZT3000B24

5900684 - ZT3000B24

## Seat & Floor Plate Group

REF NO.	PART NO.	QTY.	DESCRIPTION
1	5402937CSM	1	PLATE, SEAT SUPPORT, CONS Z - ORG
2	5025011X8SM	8	BOLT, 5/16-18 X 1 GD5 YZ
3	5025292SM	6	WASHER, 5/16 GD.9 FLAT
4	5025392SM	8	NUT, 5/16-18 HEX NYLOCK FLANGE
5	7078299SM	2	SPRING, SEAT SUPPORT
6	5025156SM	2	WASHER, 3/8 SAE
7	5100999SM	1	SAFETY WALK, FLOOR PLATE, 17.38 X 11.50
8	5101007SM	1	SAFETY WALK, FLOOR REST, 17.38 X 6.00
9	5061599SM	1	SEAT, XB-180, NO LOGO, BLACK
10	5025057SM	4	NUT, 5/16-18 HEX NYLON LOCK
11	5025394SM	2	NUT, 3/8-16 HEX NYLOCK FLANGE
12	5402946CSM	1	WELD, SEAT PLATE - ORG
13	5403043CSM	1	PLATE, FLOOR, CONSUMER Z - ORG
14	5403044CSM	1	PLATE, FLOOR, FRONT, CONS Z - ORG
15	35097	6	MOUNT, VIBRATION, 30 DURO
16	197546	4	MOUNT, VIBRATION, RUBBER
17	5025481SM	6	BOLT, 3/8-16 X 5/8, SERRATED UNDER HEAD
18	5025013X28SM	2	BOLT, 3/8-16 X 3-1/2 GD5 YZ
19	5044617SM	2	WASHER, .34 X 1.25 X 10 GA
20	5025128SM	4	NUT, 3/8-16 HEX SERRATED FLANGE
21	5021500SM	1	CLAMP, VINYL INSULATED
22	5025010X6SM	1	BOLT, 1/4-20 X 3/4 GD5 YZ
23	5025154SM	1	WASHER, 1/4 SAE
24	5025391SM	1	NUT, 1/4-20 HEX NYLOCK FLANGE
25	1686907SM	1	ARM REST, SET OF TWO (SV)
26	5100636SM	1	SPRING, SEAT ADJUSTMENT (SV)
27	5061599X1	1	KIT, SEAT RAILS. COMPLETE (SV)
28	5025394SM	2	NUT, 3/8-16 HEX NYLOCK FLANGE
29	5025480SM	6	WASHER, 3/8" ID, INTERNAL TOOTH
30	5025011X6SM	1	BOLT, 5/16-18 X 3/4 GD5
31	5025392SM	1	NUT, 5/16-18 HEX NYLOCK FLANGE
32	5025155SM	1	WASHER, 5/16 SAE
33	5403372CSM	1	PLATE, SUPPORT, FRONT FLOOR - ORG

## Footnotes

The above parts group applies to the following Mfg. Nos.:

5900660 - ZT3000B24

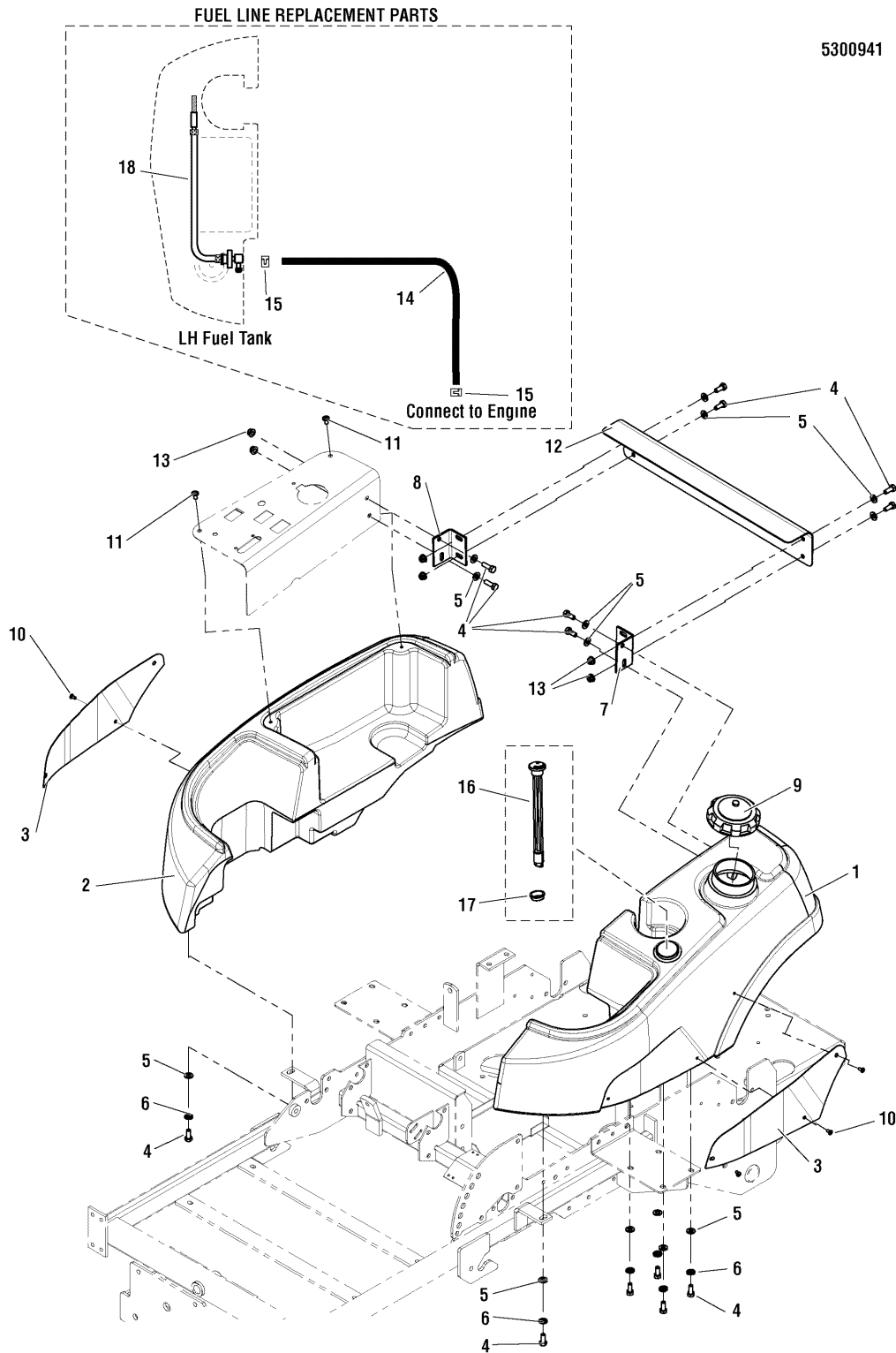
5900662 - ZT3000B24

5900684 - ZT3000B24

## Fuel Tank & Replacement Parts Group

NOTE: Unless noted otherwise, use the standard hardware torque specification chart.

5300941



The above parts group applies to the following Mfg. Nos.:

5900660 - ZT3000B24

5900662 - ZT3000B24

5900684 - ZT3000B24



## **Fuel Tank & Replacement Parts Group**

---

<b>REF NO.</b>	<b>PART NO.</b>	<b>QTY.</b>	<b>DESCRIPTION</b>
1	5101181SM	1	TANK,FUEL,LH (INCLUDES REF. NOS. 16 -18)
2	5048752SM	1	TANK,FUEL,RH
3	5048909CSM	2	PLATE,FUEL TANK BADGE
4	5025011X6SM	18	BOLT, 5/16-18 X 3/4 GD5
5	5025155SM	18	WASHER, 5/16 SAE
6	5025170SM	10	WASHER, 5/16 LOCK YZ
7	5400836CSM	1	BRACKET, REAR SUPPORT - LH - ORG
8	5048763CSM	1	BRACKET, REAR SUPPORT - RH
9	5022158SM	1	CAP, FUEL TANK, 3-1/2 NECK
10	5025386SM	6	SCREW, #10-24 X 3/8 ALLEN BHBZ
11	5025299X4SM	2	SCREW, 1/4-20 X 1/2 ALLEN BH
12	5403004CSM	1	PLATE, SUPPORT, REAR TANK - ORG
13	5025392SM	6	NUT, 5/16-18 HEX NYLOCK FLANGE
14	5050831X28SM	1	HOSE, 1/4" FUEL, 28.00"
15	5020835SM	2	CLAMP, HOSE, EXTERNAL, 1/2 - RED
16	5023197SM	1	FUEL GAUGE (SV)
17	5022917X1SM	1	GROMMET (SV)
18	5101190SM	1	PICK UP TUBE ASSM, FUEL TANK (SV)

### **Footnotes**

---

**The above parts group applies to the following Mfg. Nos.:**

5900660 - ZT3000B24

5900662 - ZT3000B24

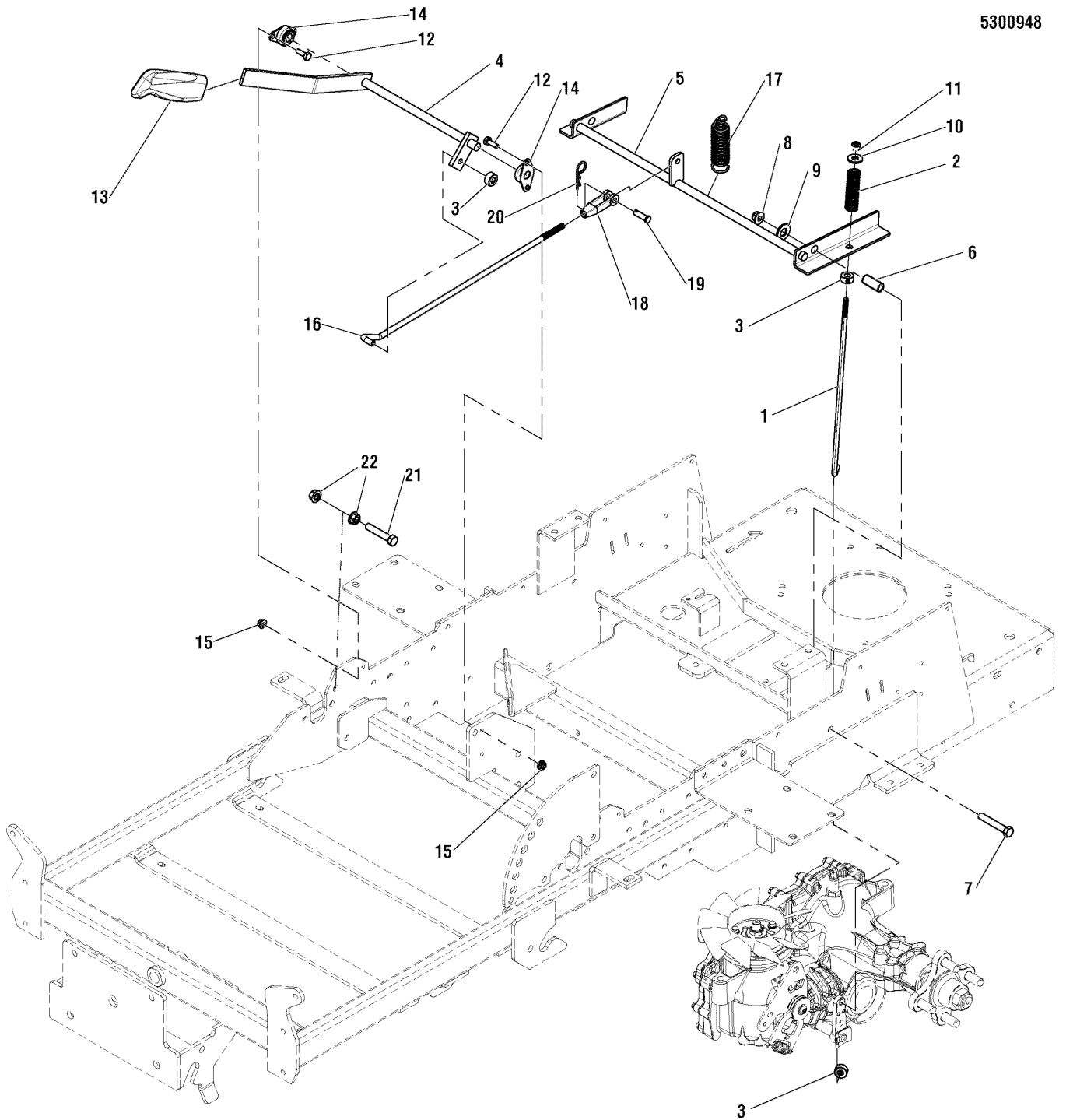
5900684 - ZT3000B24

# Parking Brake Group

NOTE: Unless noted otherwise, use the standard hardware torque specification chart.

5300948

5300948



The above parts group applies to the following Mfg. Nos.:

5900660 - ZT3000B24

5900662 - ZT3000B24

5900684 - ZT3000B24

## Parking Brake Group

REF NO.	PART NO.	QTY.	DESCRIPTION
1	5101058SM	2	ROD, BRAKE CTRL, LOWER - CONZ
2	5021102SM	2	SPRING, COMPRESSION
3	5020047SM	5	COLLAR, 5/16" SET
4	5402883CSM	1	WELD, SHAFT, BRAKE HANDLE - ORG
5	5402884CSM	1	WELD, BRAKE SHAFT - ORG
6	5044992SM	2	SPACER, .38 X .50 X 1.56
7	5025013X18SM	2	BOLT, 3/8-16 X 2-1/4 GD5 YZ
8	5025394SM	2	NUT, 3/8-16 HEX NYLOCK FLANGE
9	5025158SM	2	WASHER, 1/2 SAE
10	5025337SM	2	WASHER, 5/16 USS
11	5025045SM	2	NUT, 5/16-24 HEX NYLON LOCK
12	5025010X6SM	4	BOLT, 1/4-20 X 3/4 GD5 YZ
13	5100171SM	1	GRIP, BLACK FLEXIBLE
14	5101123SM	2	BEARING, 1/2" FLANGED
15	5025391SM	4	NUT, 1/4-20 HEX NYLOCK FLANGE
16	5101116SM	1	ROD, PULLER ROD
17	1608395SM	1	SPRING-EXTN 1.040ODX 04.000LG .105WIRE D
18	5023323SM	1	CLEVIS, 5/16-24, STEEL
19	5025213X8SM	1	PIN, CLEVIS, 5/16 X 1 YZ
20	5025210SM	1	PIN, HAIR, .0915 X 1-7/8
21	5025013X16SM	1	BOLT, 3/8-16 X 2 GD5 YZ
22	5025128SM	2	NUT, 3/8-16 HEX SERRATED FLANGE

## Footnotes

The above parts group applies to the following Mfg. Nos.:

5900660 - ZT3000B24

5900662 - ZT3000B24

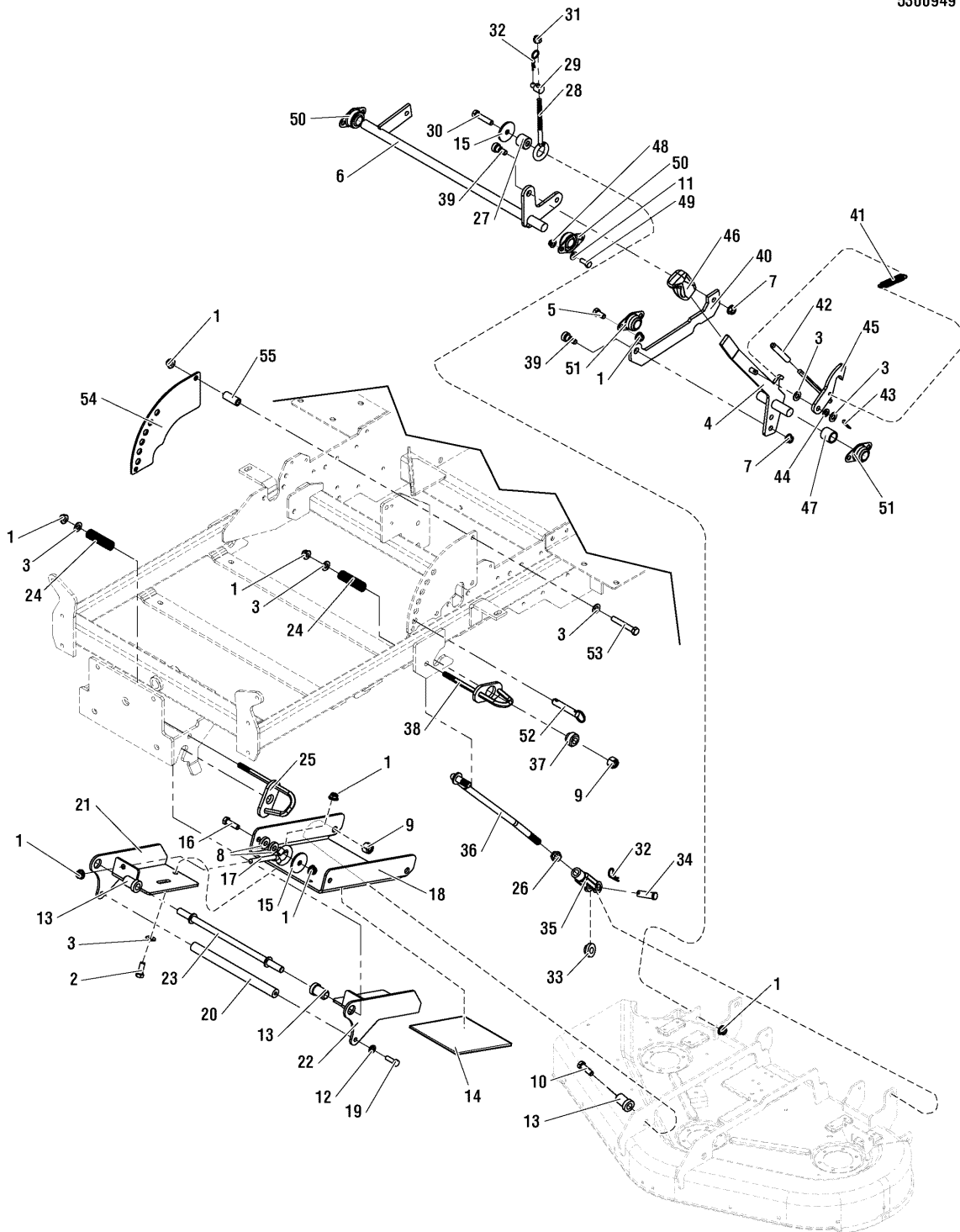
5900684 - ZT3000B24

## Deck Lift Group

NOTE: Unless noted otherwise, use the standard hardware torque specification chart.

5300949

5300949



The above parts group applies to the following Mfg. Nos.:

5900660 - ZT3000B24

5900662 - ZT3000B24

5900684 - ZT3000B24

## Deck Lift Group

REF NO.	PART NO.	QTY.	DESCRIPTION
1	5025394SM	20	NUT, 3/8-16 HEX NYLOCK FLANGE
2	5025013X8SM	4	BOLT, 3/8-16 X 1 GD5 YZ
3	5025156SM	6	WASHER, 3/8 SAE
4	5403057CSM	1	WELD, HANDLE, DECK LIFT - ORG
5	5025013X6SM	4	BOLT, 3/8-16 X 3/4 GD5 YZ
6	5403041CSM	1	WELD, SHAFT, REAR DECK LIFT - ORG
7	5025128SM	2	NUT, 3/8-16 HEX SERRATED FLANGE
8	5044960SM	4	SPACER, .39 X 1.00 X .25
9	5025098SM	4	NUT, 1/2-20 HEX NYLON LOCK
10	5025018X20SM	2	BOLT, 1/2-20 X 2-1/2" GD5 YZ
11	5025155SM	4	WASHER, 5/16 SAE
12	5025170SM	2	WASHER, 5/16 LOCK YZ
13	5100144SM	4	SPACER, .53 X 1.00 X 1.00
14	5101008SM	1	SAFETY WALK, 4.50 X 3.50
15	5025305SM	4	WASHER, .41 X 1.75 X .14
16	5025013X10SM	2	BOLT, 3/8-16 X 1-1/4 GD5
17	5023497SM	2	EYE BOLT, 3/8-16 X 5", 1 EYE
18	5400382CSM	1	PLATE, DECK HANGER SUPPORT - ORG
19	5025011X8SM	4	BOLT, 5/16-18 X 1 GD5 YZ
20	5100135SM	1	SHAFT, HANDLE, DECK MOUNT
21	5400392CSM	1	WELD, DECK HANGER, RH - ORG
22	5400391CSM	1	WELD, DECK HANGER, LH - ORG
23	5100177SM	1	SHAFT, HANGER
24	5021102SM	4	SPRING, COMPRESSION
25	5400401CSM	2	WELD, QUICK RELEASE HANDLE - ORG
26	5025089SM	2	NUT, 1/2-20 HEX JAM
27	5047125SM	2	SPACER, .39 X 1.00 X .88
28	5021812SM	2	EYE BOLT, 3/8-16 X 4-1/4", 1" EYE
29	5045947SM	2	ADJUSTER, BRAKE LINKAGE
30	5025013X14SM	2	BOLT, 3/8-16 X 1-3/4 GD5
31	5025096SM	2	NUT, 3/8-16 HEX NYLON LOCK
32	5025210SM	4	PIN, HAIR, .0915 X 1-7/8
33	5048258SM	2	BUSHING, DECK SUPPORT
34	5025328X12SM	2	PIN, CLEVIS, 1/2 X 1 1/2, YZP
35	5023174SM	2	CLEVIS, 1/2-20, STEEL
36	5100170SM	2	ROD, DECK LIFT LINKAGE
37	5100351SM	2	BUSHING, REAR QUICK TACH
38	5400839CSM	2	WELD, QUICK RELEASE HANDLE, REAR - ORG.
39	5025356SM	2	BOLT, 3/8-16 X 3/8", 1/2" SHOULDER
40	5048733CSM	1	LINK, DECK LIFT SHAFT
41	5020639SM	1	SPRING, EXTENSION
42	5023198SM	1	COVER, VINYL HANDLE
43	5025203X6SM	1	PIN, COTTER, 1/8" X 3/4
44	5023202SM	1	WASHER, WAVE, M10

### Footnotes

The above parts group applies to the following Mfg. Nos.:

5900660 - ZT3000B24

5900662 - ZT3000B24

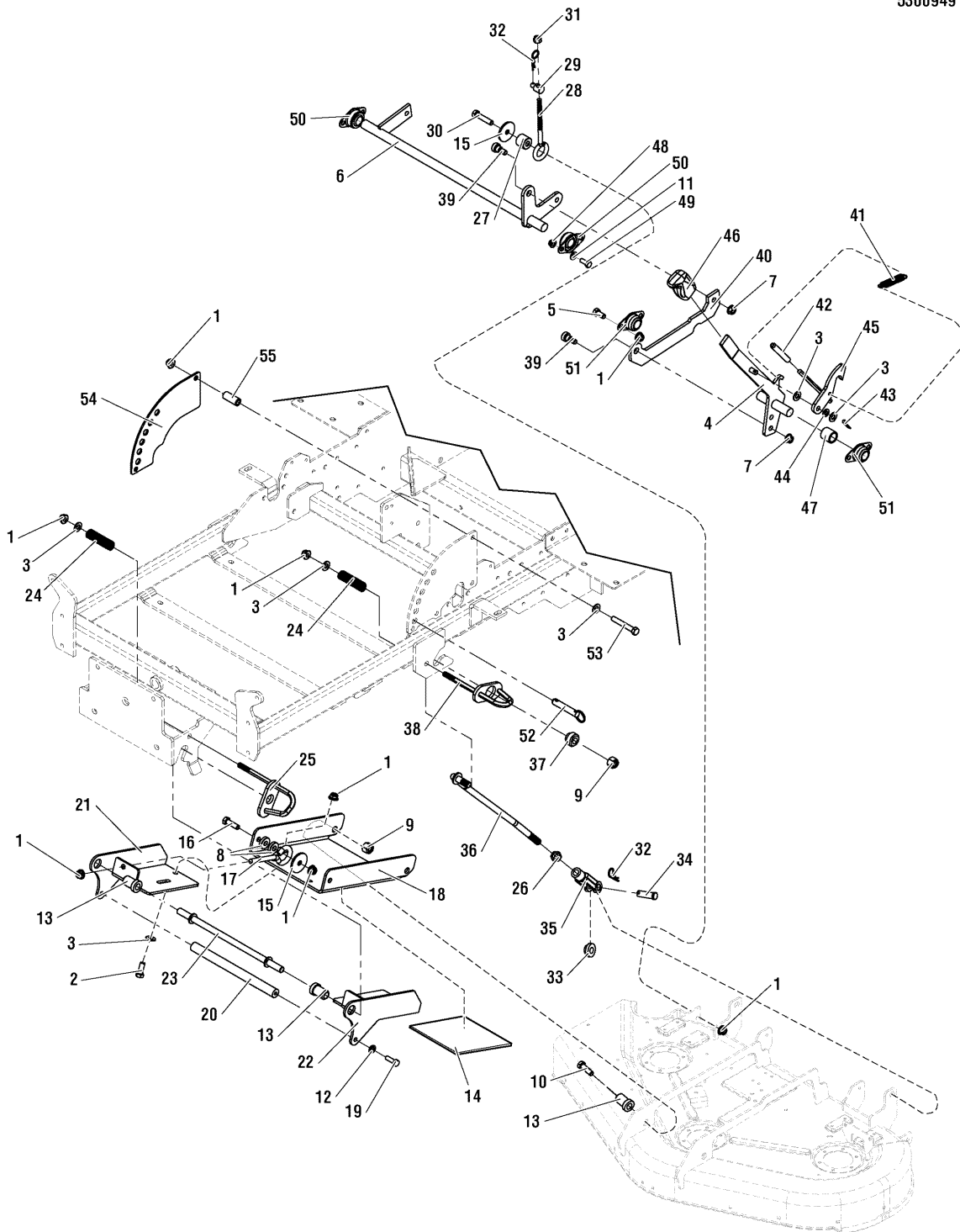
5900684 - ZT3000B24

## Deck Lift Group

NOTE: Unless noted otherwise, use the standard hardware torque specification chart.

5300949

5300949



The above parts group applies to the following Mfg. Nos.:

5900660 - ZT3000B24

5900662 - ZT3000B24

5900684 - ZT3000B24

## Deck Lift Group

---

REF NO.	PART NO.	QTY.	DESCRIPTION
45	5048884CSM	1	WELD, DECK LOCK
46	5100171SM	1	GRIP, BLACK FLEXIBLE
47	5048335SM	1	SPACER, .76 X 1.00 X 1.00
48	5025392SM	4	NUT, 5/16-18 HEX NYLOCK FLANGE
49	5025011X6SM	4	BOLT, 5/16-18 X 3/4 GD5
50	5100561SM	2	BEARING, BRONZE FLANGE, 3/4"
51	5021098SM	2	BEARING, BRONZE FLANGE, 3/4"
52	5100179SM	1	HITCH PIN ASSEMBLY, 1/2" X 2.50"
53	5025013X20SM	2	BOLT, 3/8-16 X 2-1/2 GD5 YZ
54	5400370CSM	1	PLATE, DECK HEIGHT- INNER -ORG
55	5048264SM	2	SPACER, .39 X .63 X 1.50

## Footnotes

---

**The above parts group applies to the following Mfg. Nos.:**

5900660 - ZT3000B24

5900662 - ZT3000B24

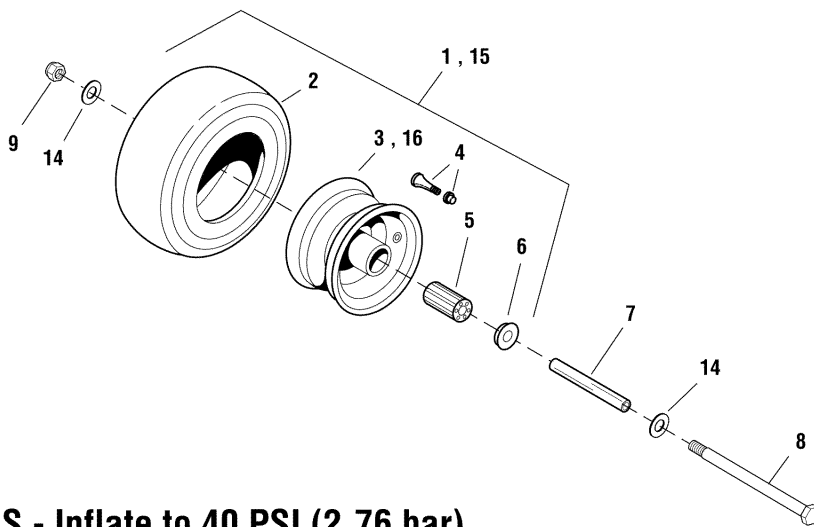
5900684 - ZT3000B24

## Wheel & Tire Group

NOTE: Unless noted otherwise, use the standard hardware torque specification chart.

5300950

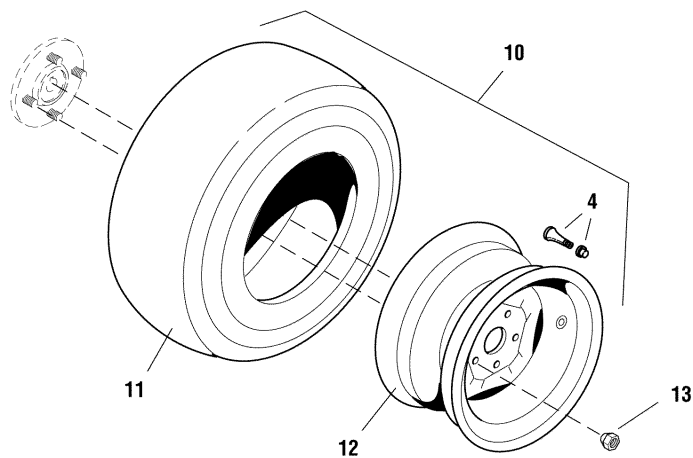
### Front Wheels & Tires



**5022433S - Inflate to 40 PSI (2,76 bar)**

**5101418 - Inflate to 25 PSI (1,72 bar)**

### Rear Wheels & Tires



**Inflate to 15 PSI (1,03 bar)**

The above parts group applies to the following Mfg. Nos.:

5900660 - ZT3000B24

5900662 - ZT3000B24

5900684 - ZT3000B24



## Wheel & Tire Group

REF NO.	PART NO.	QTY.	DESCRIPTION
1	5022433SSM	2	WHEEL & TIRE ASSEMBLY, 11 X 4.0 - 5, Complete (INCLUDES REF NO. 2 - 6)
2	5022433X1SM	2	TIRE, Front, 11 X 4.0 - 5 (SV)
3	5022433SX2SM	2	WHEEL ASSEMBLY, Complete (INCLUDES REF NO. 4 & 5)
4	2172353SM	4	VALVE STEM & CAP ASSEMBLY (SV)
5	5022579SM	4	BEARING, Roller (2 PER TIRE)
6	5021043SM	4	BEARING, Retainer (2 PER TIRE)
7	5045996SM	2	AXLE, Front Caster
8	5025017X52SM	2	CAPSCREW, Hex Head, 1/2-13 X 6-1/2
9	5025056SM	2	NUT, Hex Nylon Lock, 1/2-13
10	5101293SM	2	TIRE ASSM, 20X8.00-10NHS, TURF MASTER (INCLUDES REF NO. 4, 11 & 12)
11	5101293X1SM	2	TIRE, Rear 20 X 8.0 X 10, TURF MASTER (SV)
12	5023095X2SM	2	WHEEL ASSEMBLY, For 20 X 8.0 X 10 Tire (SV)
13	5020601SM	8	LUG NUT, 1/2-20
14	5025158SM	4	WASHER, SAE, 1/2
15	5101418	2	WHEEL, CASTER, 11 X 4.0-5 SILVER BEAD LO (INCLUDES REF NO. 2, 4-6, 16) (S/N: 2013129511 & Above)
16	5101418X1	2	WHEEL ASSEMBLY, Complete (INCLUDES REF NO. 4 & 5)

## Footnotes

---

**The above parts group applies to the following Mfg. Nos.:**

5900660 - ZT3000B24

5900662 - ZT3000B24

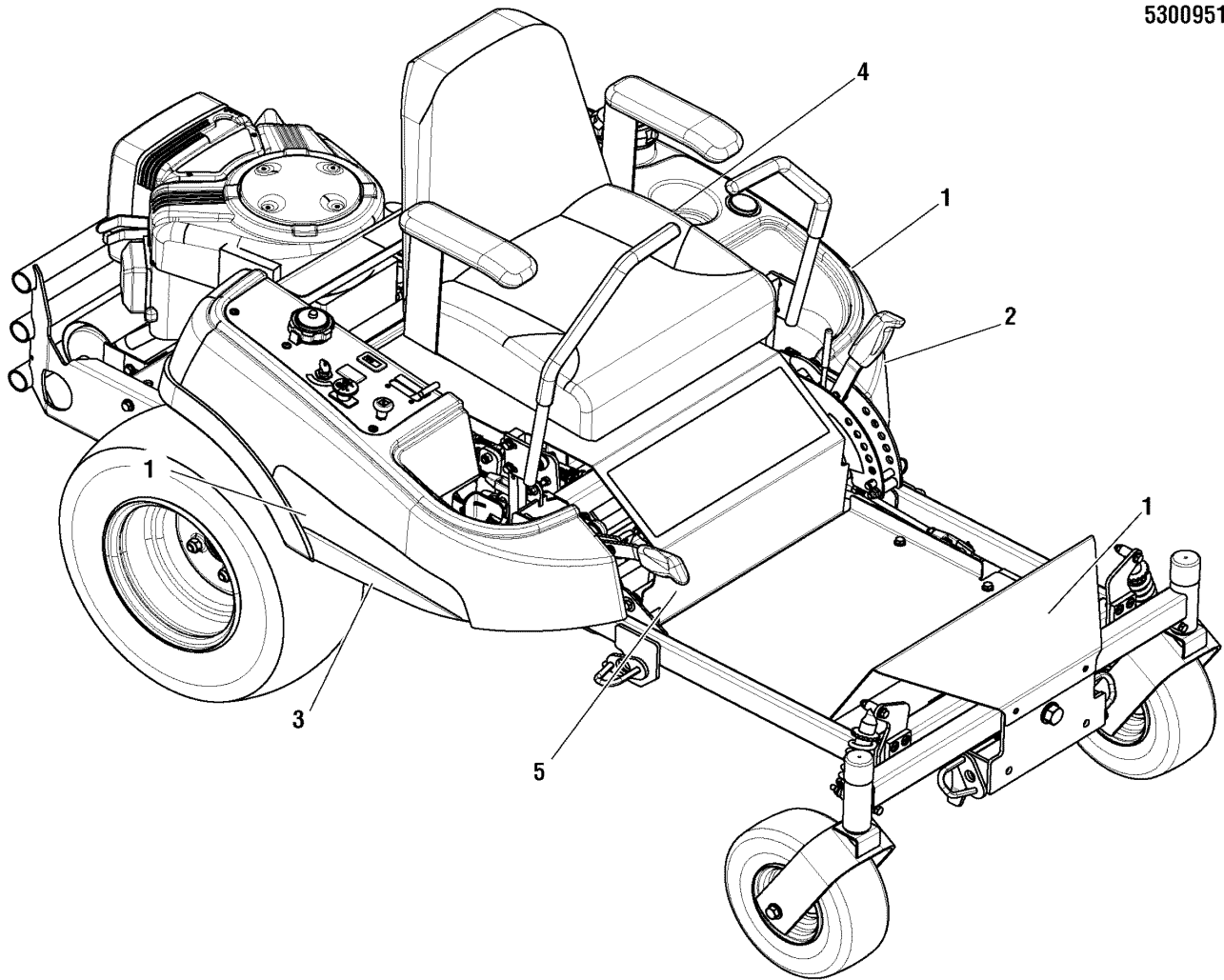
5900684 - ZT3000B24

## Decals Group - Brand & Model

NOTE: Unless noted otherwise, use the standard hardware torque specification chart.

5300951

5300951



The above parts group applies to the following Mfg. Nos.:

5900660 - ZT3000B24

5900662 - ZT3000B24

5900684 - ZT3000B24

## ***Decals Group - Brand & Model***

---

<b>REF NO.</b>	<b>PART NO.</b>	<b>QTY.</b>	<b>DESCRIPTION</b>
1	1722551SM	1	DECAL, Simplicity, Silver & Blue, w/Icon
2	5023228SM	1	DECAL, Stripe, LH, Simplicity
3	5023229SM	1	DECAL, Stripe, RH, Simplicity
4	1720454SM	1	DECAL, Touch Up Paint, Simplicity (LOCATED UNDER SEAT)
5	5101325SM	1	DECAL, ZT3000 24HP, SMI

### **Footnotes**

---

**The above parts group applies to the following Mfg. Nos.:**

5900660 - ZT3000B24

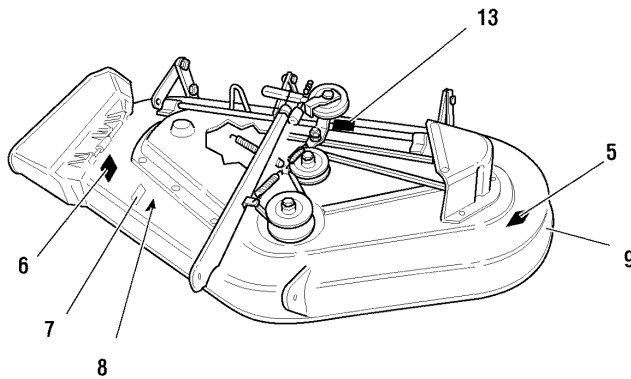
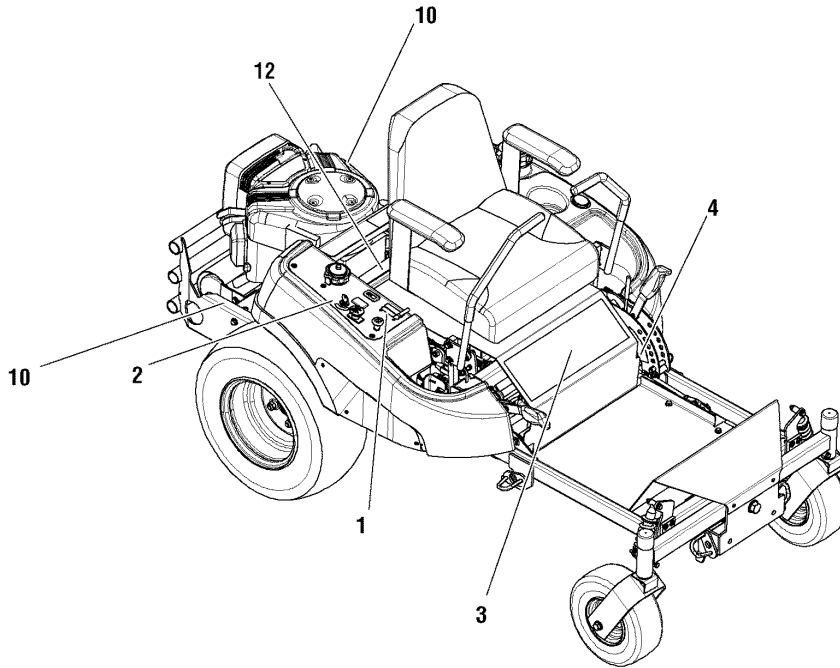
5900662 - ZT3000B24



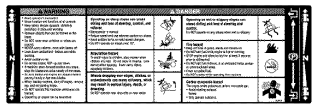






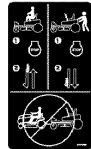
5900684 - ZT3000B24


# Decals Group - Safety & Common

NOTE: Unless noted otherwise, use the standard hardware torque specification chart.

5300955



- 1  5300955
- 2 
- 3 
- 4 
- 5 
- 6 
- 7 
- 8 
- 9 
- 10 
- 11 

Tractor Belts & Blades	
Pump Drive Belt	9022831
44" Mower Deck Drive Belt	9022298
Mower Blade	1704100
50" Mower Deck Drive Belt	9022255
Mower Blade	1708228
- 12 

The above parts group applies to the following Mfg. Nos.:

- 5900660 - ZT3000B24
- 5900662 - ZT3000B24

## **Decals Group - Safety & Common**

---

<b>REF NO.</b>	<b>PART NO.</b>	<b>QTY.</b>	<b>DESCRIPTION</b>
1	5100280SM	1	DECAL, THROTTLE CONTROL
2	5048970SM	1	DECAL, IGNITION SWITCH
3	5100710SM	1	DECAL, MAIN
4	1725703SM	1	DECAL, HEIGHT OF CUT
5	5100136SM	1	DECAL, DANGER, MOWER
6	5100137SM	1	DECAL, DANGER, MOWER DISCHARGE
7	1722789SM	1	DECAL-44"- SILVER ON BLACK W/STRIPE
7	1722790SM	1	DECAL, 50"
8	-	1	DECAL-OPEI CERTIFIED ANSI B71.12003 GOLD (NOT A SERVICABLE PART)
9	1722771SM	1	DECAL-FREE FLOATING MOWER- SILVER
10	5101062SM	2	DECAL, TRANSAXLE RELEASE
11	5101102SM	1	DECAL, BELT & BLADE, CONS Z (LOCATED UNDER SEAT PLATE)
12	5020337	1	DECAL, WARNING (LOCATED BEHIND SEAT ON SUPPORT PLATE)
13	-	1	TAG, PRINTED SERIAL (NOT A SERVICABLE PART)

### **Footnotes**

---

**The above parts group applies to the following Mfg. Nos.:**

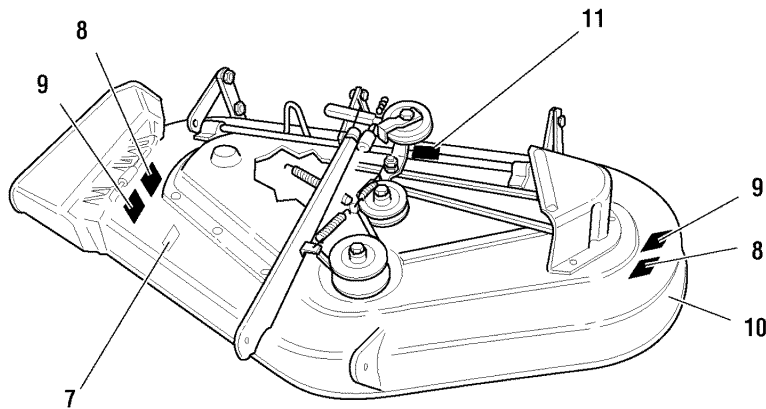
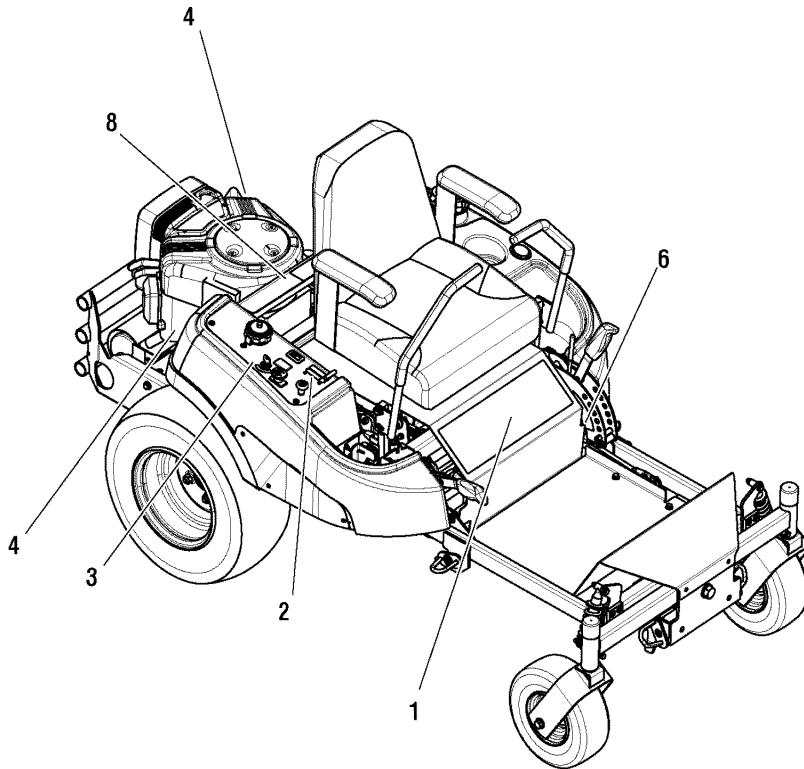
5900660 - ZT3000B24

5900662 - ZT3000B24

# Export Decals Group - Safety & Common

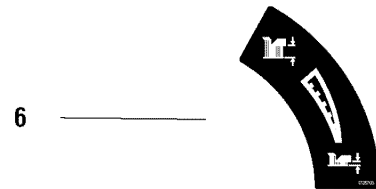
NOTE: Unless noted otherwise, use the standard hardware torque specification chart.

5301024



5 — 

Bolts & Blades	
Tractor	
Pump Drive Bolt	0022831
43" Mower Deck Drive Bolt	0023958
Mower Blade	1704100
50" Mower Deck Drive Bolt	0026755
Mower Blade	1708228



The above parts group applies to the following Mfg. Nos.:  
5900684 - ZT3000B24

## **Export Decals Group - Safety & Common**

---

<b>REF NO.</b>	<b>PART NO.</b>	<b>QTY.</b>	<b>DESCRIPTION</b>
1	5101233SM	1	DECAL, MAIN, CE
2	5100280SM	1	DECAL, THROTTLE CONTROL
3	5048970SM	1	DECAL, IGNITION SWITCH
4	5101062SM	2	DECAL, TRANSAXLE RELEASE
5	5101102SM	1	DECAL, BELT & BLADE, CONS Z (LOCATED UNDER SEAT PLATE)
6	1725703SM	1	DECAL, HEIGHT OF CUT
7	1722789SM	1	DECAL-44"- SILVER ON BLACK W/STRIPE
7	1722790SM	1	DECAL-50"- SILVER ON BLACK W/STRIPE
8	5061042SM	3	DECAL, CE DANGER
9	1720389SM	2	DECAL-DANGER ROTATING BLADE SYMBOLS
10	1722771SM	1	DECAL-FREE FLOATING MOWER- SILVER
11	-	1	TAG, PRINTED SERIAL (NOT A SERVICABLE PART)

### **Footnotes**

---

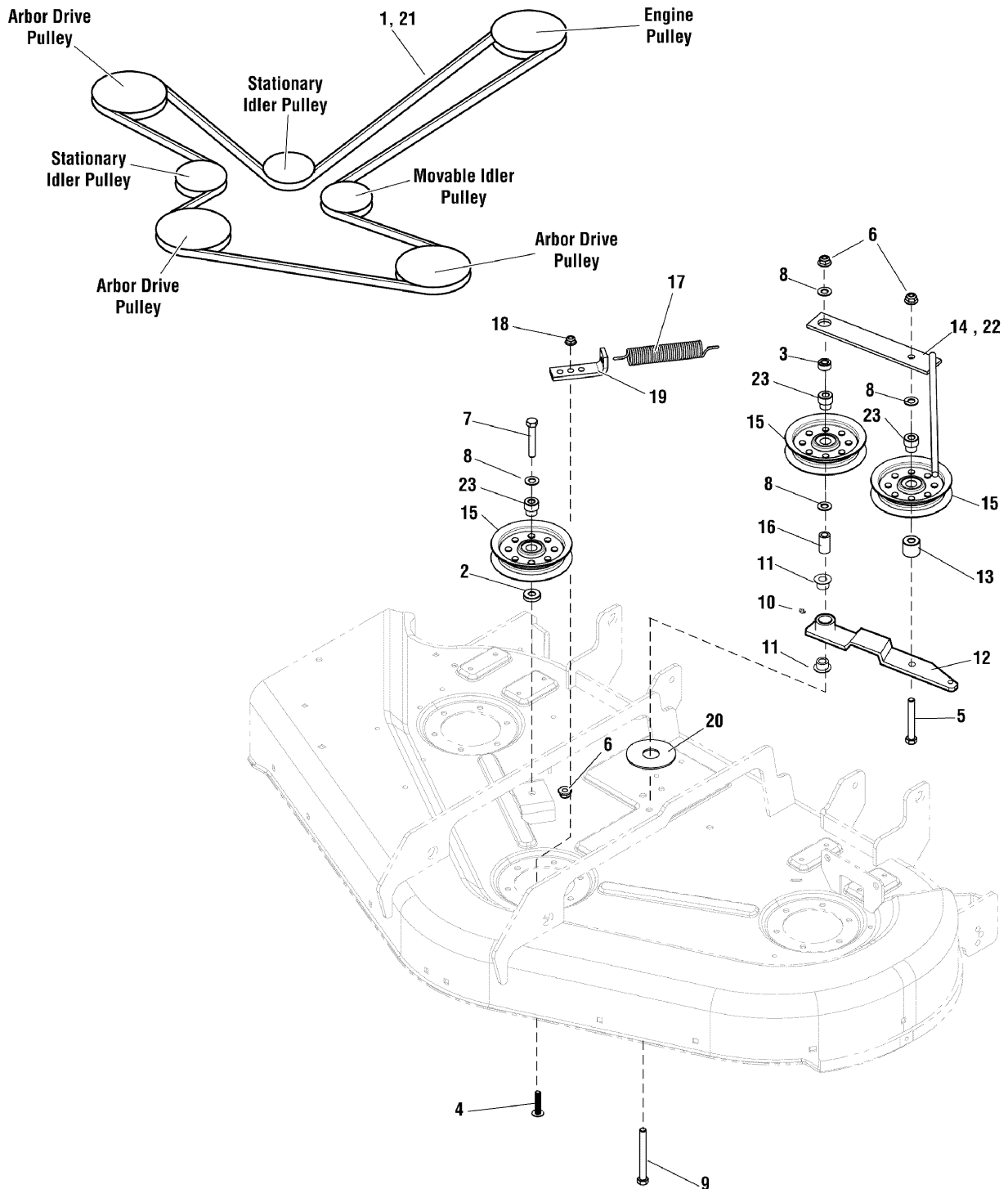
**The above parts group applies to the following Mfg. Nos.:**

5900684 - ZT3000B24

## 44" & 50" Mower Deck - Belt & Idler Group

5300957

NOTE: Unless noted otherwise, use the standard hardware torque specification chart.



The above parts group applies to the following Mfg. Nos.:

5900660 - ZT3000B24

5900662 - ZT3000B24

5900684 - ZT3000B24



## 44" & 50" Mower Deck - Belt & Idler Group

REF NO.	PART NO.	QTY.	DESCRIPTION
1	5023256SM	1	BELT,#7-8060, 151" E.L. (FOR 44" DECK ONLY)
2	5044960SM	1	SPACER, .39 X 1.00 X .25
3	5044933SM	1	SPACER, .39 X .75 X .38
4	5023156SM	1	BOLT, 5/16-18 X 1 1/4 FLANGE
5	5025013X22SM	1	BOLT, 3/8-16 X 2-3/4" GD5 YZ
6	5025394SM	3	NUT, 3/8-16 HEX NYLOCK FLANGE
7	5025013X18SM	1	BOLT, 3/8-16 X 2-1/4 GD5 YZ
8	5025156SM	4	WASHER, 3/8 SAE
9	5025013X28SM	1	BOLT, 3/8-16 X 3-1/2 GD5 YZ
10	5020095SM	1	GREASE FITTING, 1/4-28 STRAIGHT
11	1676148SM	2	BUSHING-0.628IDX0.751ODX0.400LG PWDR MTL
12	5402228CSM	1	WELD, DECK IDLER ARM, CONSZ - ORG
13	5047125SM	1	SPACER, .39 X 1.00 X .88
14	5403492CSM	1	WELD, MOUNT, IDLER, TENSION - ORG (FOR 44" DECK ONLY)
15	5021002SM	3	PULLEY, IDLER
16	1674669SM	1	SPACER-0.39 IDX0.625ODX1.15 LG CASE HARD
17	1715435SM	1	SPRING, EXTENSION, 1.00
18	5025392SM	1	NUT, 5/16-18 HEX NYLOCK FLANGE
19	5402172CSM	1	BRACKET, SPRING ANCHOR - ORG
20	5025305SM	1	WASHER, .41 X 1.75 X .14
21	5023255SM	1	BELT,#7-8055, 155" E.L. (FOR 50" DECK ONLY)
22	5400412CSM	1	WELD, MT, IDLER, TENSION (FOR 50" DECK ONLY)
23	5049184SM	3	SPACER, HYDRO PULLEY

### Footnotes

The above parts group applies to the following Mfg. Nos.:

5900660 - ZT3000B24

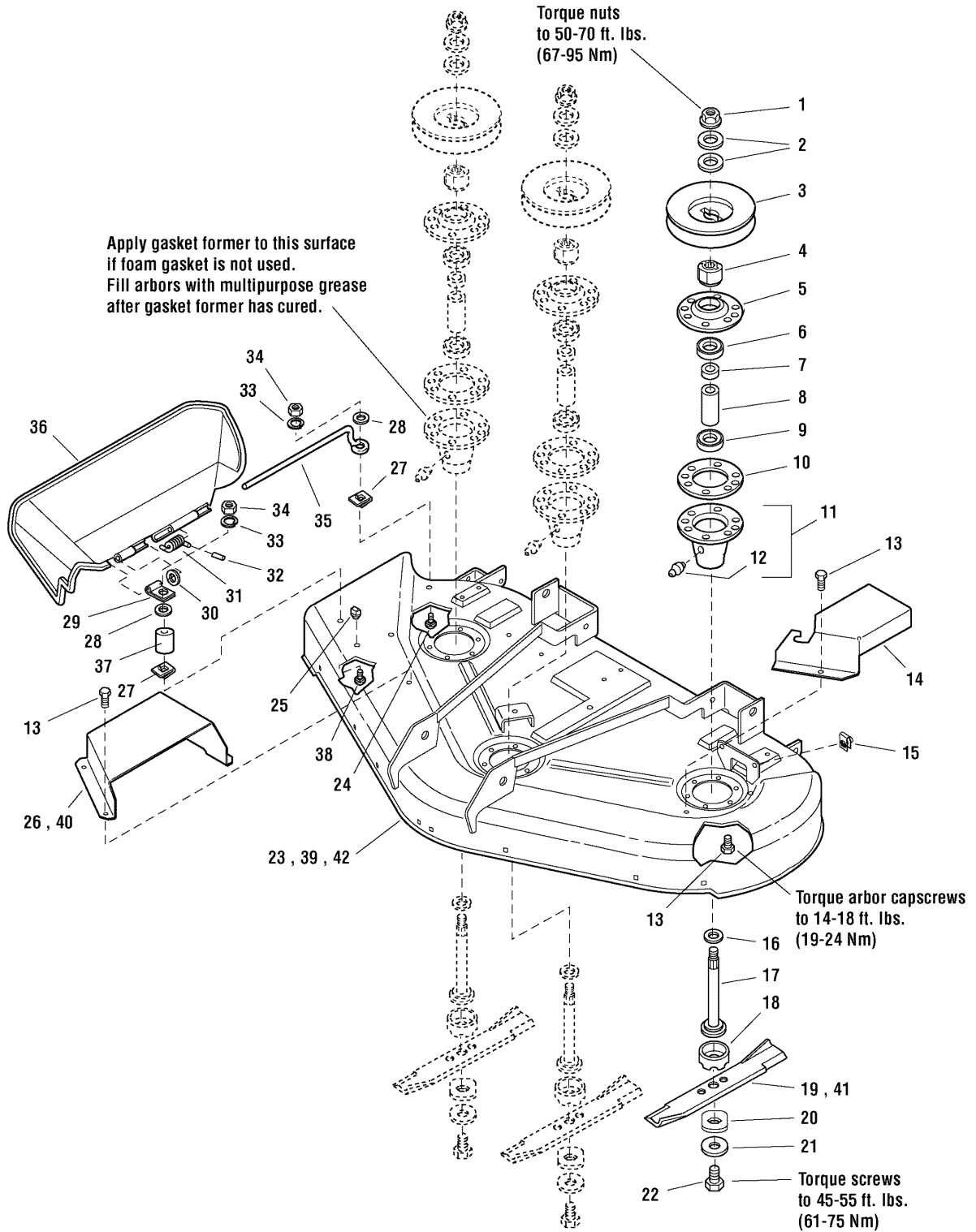
5900662 - ZT3000B24

5900684 - ZT3000B24

# 44" & 50" Mower Deck - Housing, Arbors, & Blades Group

NOTE: Unless noted otherwise, use the standard hardware torque specification chart.

5300956



The above parts group applies to the following Mfg. Nos.:

5900660 - ZT3000B24

5900662 - ZT3000B24

5900684 - ZT3000B24

## 44" & 50" Mower Deck - Housing, Arbors, & Blades Group

REF NO.	PART NO.	QTY.	DESCRIPTION
1	1714419SM	3	NUT, HEX FLANGE, 9/16-18
2	1713675SM	6	WASHER, BELLEVILLED, 9/16
3	1713161SM	3	PULLEY
4	1713613SM	3	HUB
5	1655729ASM	3	COVER, ARBOR HOUSING
6	2108202SM	3	BEARING, BALL, 3/4 X 1-3/4 X 5/8
7	1715724SM	3	SPACER, 21/32 X 3/4 X 5/8
8	1732544SM	3	SPACER, 11/16 X 5/32 X 2-11/16
9	1705897SM	3	BEARING, BALL, 11/16 X 1-9/16 X 15/32
10	1707335SM	3	SEAL, FOAM
11	1713338ASM	3	ARBOR HOUSING ASSEMBLY (INCLUDES REF. NO. 12)
12	1704314SM	3	FITTING, GREASE
13	1664847SM	33	SCREW-HEX WSHR HD TAPTT5/16-18X0.750BLK
14	5400403CSM	1	GUARD, BELT - LH - ORG
15	5022308SM	2	BODY CLIP, 5/16-18 X 1/2" DEEP
16	1713619SM	3	WASHER, 9/16, BLACK
17	1713609SM	3	SHAFT, ARBOR
18	1713196SM	3	SHIELD, GRASS, LOWER
19	1704100ASM	3	BLADE, Mower, 16-1/8 (FOR 44" DECK ONLY)
20	1713089SM	3	WASHER, HEX, 11/16 X 2
21	1656916SM	3	WASHER, SPRING, 15/32, BLACK
22	2823471SM	3	BOLT, 7/16-14 X 1-1/4
23	5600122	1	DECK SHELL W/ DECALS, 44 - SMI (2008) (FOR 44" DECK ONLY)
24	1931318SM	1	BOLT-RD HD SH SQ NK 1/4-20X0.875 G5 BLK
25	1705115SM	1	PLUG,HOLE
26	5401091CSM	1	GUARD, BELT - RH, 44", SMI ORANGE
27	1960518SM	2	NUT-PUSH FOR .250 DIA THREAD .500 OD BLK
28	1960353SM	1	WASHER-0.250(0.26IDX0.84ODX.12THK) BLK
29	1704873SM	1	CLAMP, WIRE, .312DIA. (1) .281HOLE BLK
30	1919326SM	1	WASHER-0.312 (0.34IDX0.75ODX.06THK) BLK
31	7101082SM	1	SPRING, TORSION, CHUTE, 44/50
32	1723323SM	1	CAP, VINYL
33	1916964SM	2	LOCKWASHER, SPRING .250 BLK
34	1916622SM	2	NUT-HEX 1/4-20 BLK 588514
35	5049245SM	1	ROD, DEFLECTOR
36	1705449SM	1	DEFLECTOR, BLACK
37	1710703SM	1	SPACER-0.328IDX0.499ODX0.625LG PM
38	5025144X14SM	1	BOLT, CARRIAGE, 1/4-20 X 1.25, GD5,BLACK
39	5600123	1	DECK SHELL W/ DECALS, 50 - SMI (2008) (FOR 50" DECK ONLY)
40	5048446CSM	1	GUARD, BELT, RH (FOR 50" DECK ONLY)
41	1708229ASM	3	BLADE, MOWER, 18-1/8 (FOR 50" DECK ONLY)
42	5600126	1	EXPORT DECK SHELL W/ DECALS, 50 - SMI (2008) (FOR 50" EXPORT MODELS ONLY)

### Footnotes

The above parts group applies to the following Mfg. Nos.:

5900660 - ZT3000B24

5900662 - ZT3000B24

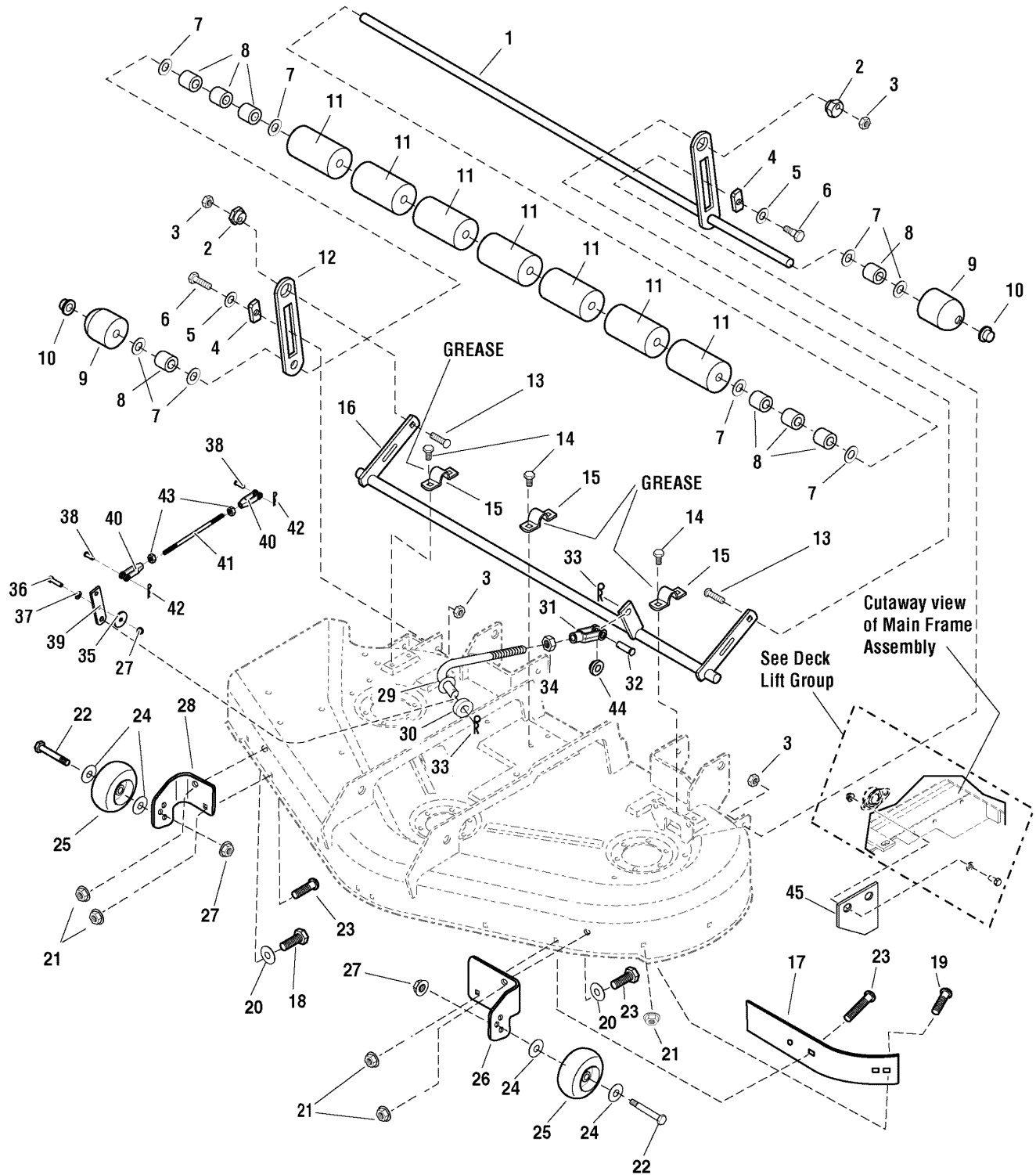
5900684 - ZT3000B24

# 44" Mower Deck - Rollers Group

NOTE: Unless noted otherwise, use the standard hardware torque specification chart.

5300958

5300958



The above parts group applies to the following Mfg. Nos.:  
5900660 - ZT3000B24

## 44" Mower Deck - Rollers Group

REF NO.	PART NO.	QTY.	DESCRIPTION
1	5048676CSM	1	WELD,SHAFT,ROLLER,44
2	1704082SM	2	NUT-HEX ADJUSTING .990DIA .687TH PM YEL
3	2960681SM	4	NUT-HEX TOPLOCK SPIRAL FLNG 3/8-16 YEL
4	1677507SM	2	SLIDE .803 X 1.7
5	1924361SM	2	WASHER-0500(0.53IDX1.25X.08THK)BLK
6	2172622SM	2	BOLT, SHLDR, 3/8-16 1.34LG .50SH G5 BLK
7	1924366SM	8	WASHER-0.625(0.66IDX1.12X.11THK) BLK
8	1602946SM	8	SPACER-0.666ID 0.067WL 0.81 LG SPLIT BLK
9	1717675SM	2	ROLLER,ROUNDED
10	1960520SM	2	NUT-PUSH FOR .625 DIA STUD CAPPED BLK
11	1668513SM	7	ROLLER-0.652ID 2.50 OD 4.10LG BLACK POLY
12	5049040CSM	1	BAR, ROLLER
13	1931352SM	2	BOLT-RD HD SH SQ NK 3/8-16X1.500 G5 BLK
14	1664847SM	6	SCREW-HEX WSHR HD TAPTT5/16-18X0.750BLK
15	1665374SM	3	STRAP-1.00WD 3.06LG .134THK ROLLER ECOAT
16	5048672CSM	1	WELD,SHAFT,DECK LIFT,44
17	1724538ASM	1	SHORT BLOWOUT BAFFLE BLACK
18	5025145X8SM	2	BOLT, 5/16-18 X 1, CARRIAGE
19	5025145X6SM	4	BOLT, 5/16-18 X 3/4", CARRIAGE
20	5025155SM	2	WASHER, 5/16 SAE
21	5025392SM	5	NUT, 5/16-18 HEX NYLOCK FLANGE
22	2108765SM	2	BOLT-WHEEL 3/8-16X2.781 .750 THRD YELLOW
23	5025011X8SM	3	BOLT, 5/16-18 X 1 GD5 YZ
24	1960027SM	4	WASHER-0500(0.51IDX0.87ODX.06THK) BLK
25	1714760SM	2	WHEEL- 2.00 WIDE 3.92 DIA 0.531ID POLY
26	5049017CSM	1	BRACKET, GAUGE WHEEL, LH
27	5025394SM	3	NUT, 3/8-16 HEX NYLOCK FLANGE
28	5049018CSM	1	BRACKET, GAUGE WHEEL, RH
29	5101286SM	1	ROD, DECK LIFT
30	5049184SM	3	SPACER, HYDRO PULLEY
31	5023174SM	1	CLEVIS, 1/2-20, STEEL
32	5025328X12SM	1	PIN, CLEVIS, 1/2 X 1 1/2, YZP
33	5025210SM	2	PIN, HAIR, .0915 X 1-7/8
34	5025089SM	1	NUT, 1/2-20 HEX JAM
35	5025305SM	1	WASHER, .41 X 1.75 X .14
36	5025013X12SM	1	BOLT, 3/8-16 X 1-1/2 GD5 YZ
37	5025156SM	1	WASHER, 3/8 SAE
38	5025214X8SM	2	PIN, CLEVIS, 3/8 X 1
39	5049482CSM	1	LINK, ROLLER REVERSE
40	5021171SM	2	CLEVIS 3/8-24, PLASTIC
41	5101136SM	1	ROD, LEVER CONNECTING
42	5025201X6SM	2	PIN, COTTER, 3/32" X 3/4
43	5025309SM	2	NUT, 3/8-24 HEX JAM
44	5048258SM	1	BUSHING, DECK SUPPORT

### Footnotes

The above parts group applies to the following Mfg. Nos.:

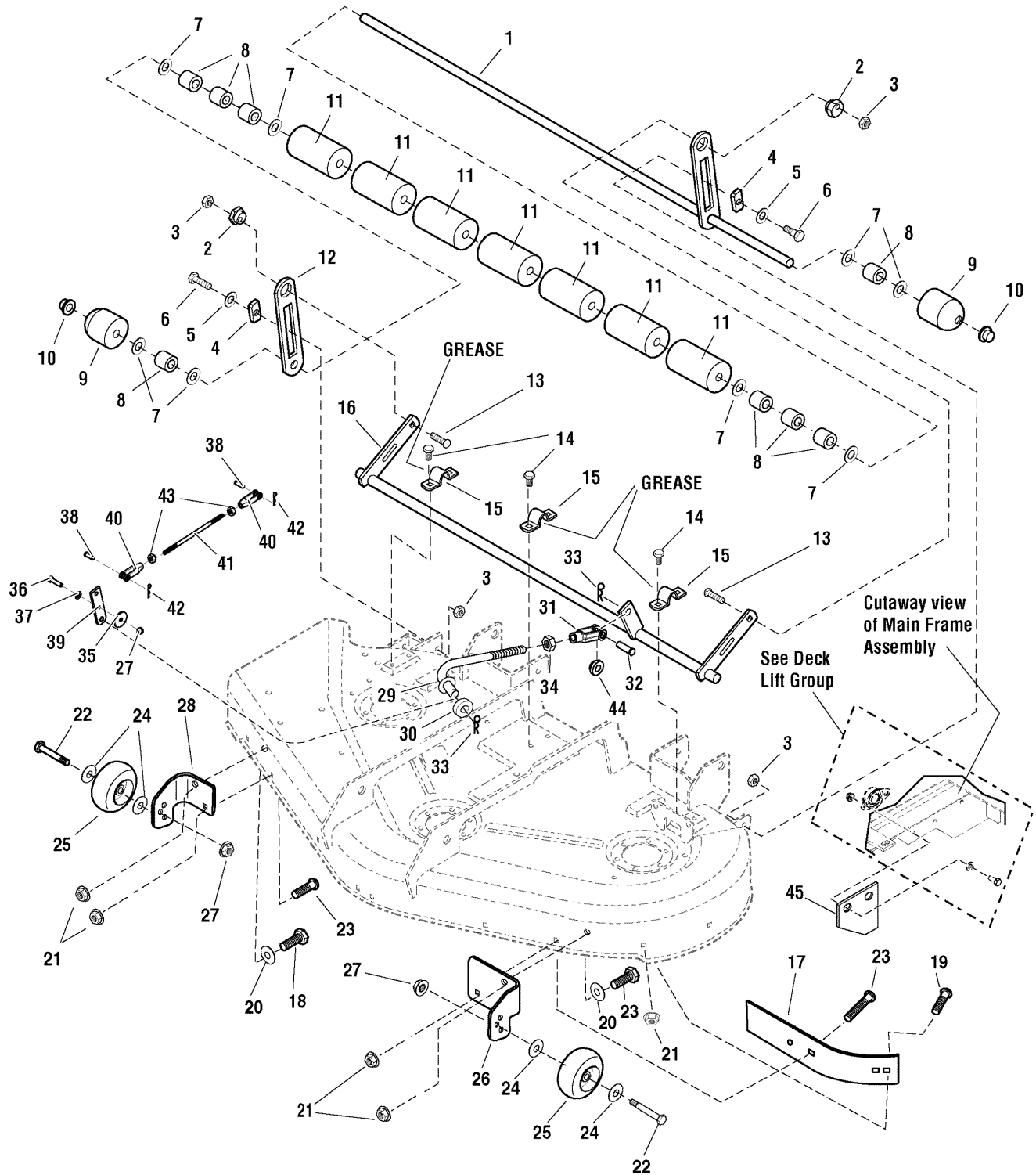
5900660 - ZT3000B24

# 44" Mower Deck - Rollers Group

NOTE: Unless noted otherwise, use the standard hardware torque specification chart.

5300958

5300958



The above parts group applies to the following Mfg. Nos.:

5900660 - ZT3000B24

## **44" Mower Deck - Rollers Group**

---

<b>REF NO.</b>	<b>PART NO.</b>	<b>QTY.</b>	<b>DESCRIPTION</b>
45	5401053CSM	2	PLATE, DECK STOP

---

### **Footnotes**

---

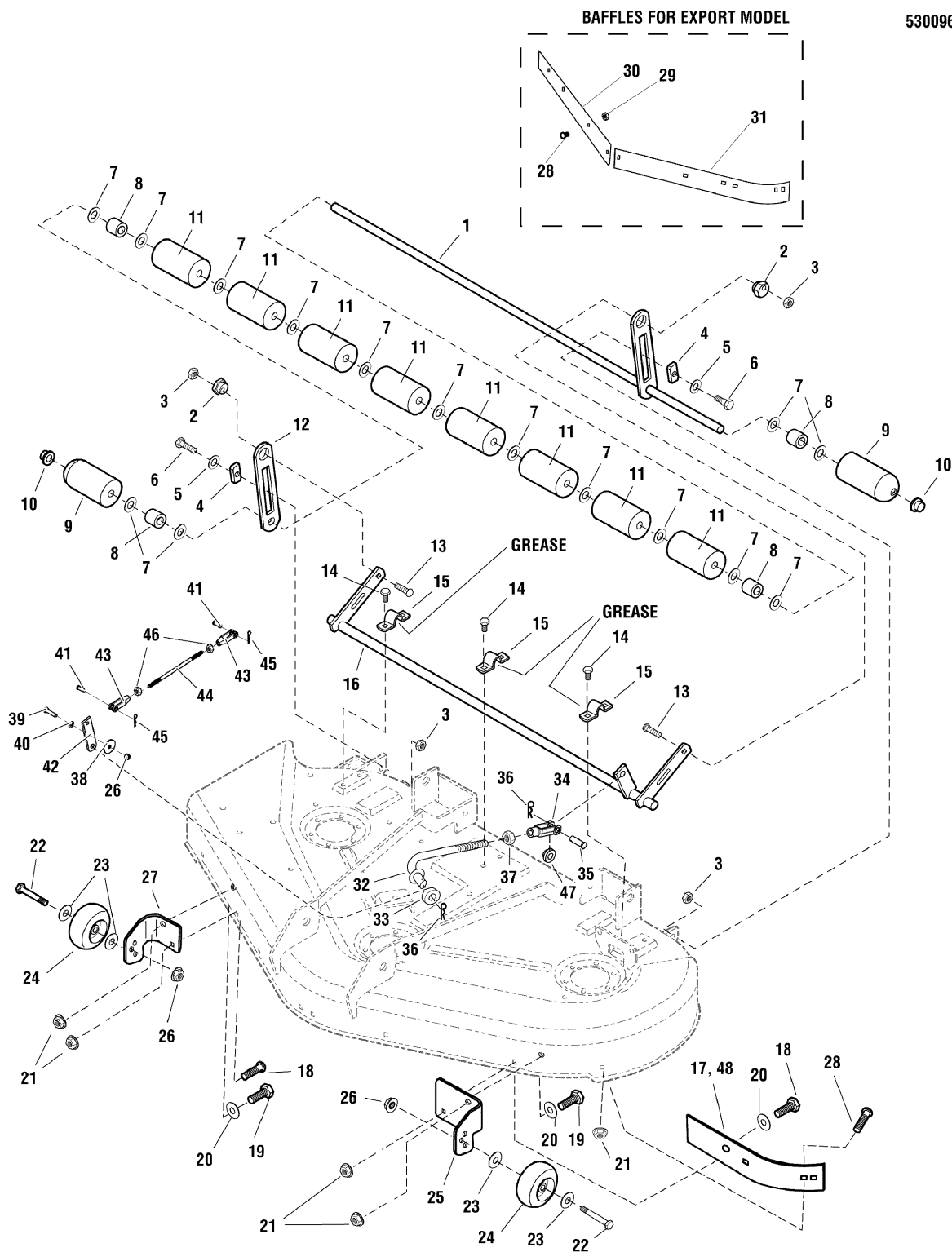
**The above parts group applies to the following Mfg. Nos.:**

5900660 - ZT3000B24

# 50" Mower Deck - Rollers Group

NOTE: Unless noted otherwise, use the standard hardware torque specification chart.

5300965



The above parts group applies to the following Mfg. Nos.:

5900662 - ZT3000B24

5900684 - ZT3000B24



## 50" Mower Deck - Rollers Group

REF NO.	PART NO.	QTY.	DESCRIPTION
1	5048746CSM	1	WELD,SHAFT,ROLLER,50
2	1704082SM	2	NUT-HEX ADJUSTING .990DIA .687TH PM YEL
3	2960681SM	4	NUT-HEX TOPLOCK SPIRAL FLNG 3/8-16 YEL
4	1677507SM	2	SLIDE .803 X 1.7
5	1924361SM	2	WASHER-0500(0.53IDX1.25X.08THK)BLK
6	2172622SM	2	BOLT, SHLDR, 3/8-16 1.34LG .50SH G5 BLK
7	1924366SM	15	WASHER-0.625(0.66IDX1.12X.11THK) BLK
8	1709195SM	4	SPACER, .876 OD X .666 ID X 1.25 LG
9	1722036SM	2	ROLLER-0.650ID 2.50OD ROUNDED BLACK POLY
10	1960520SM	2	NUT-PUSH FOR .625 DIA STUD CAPPED BLK
11	1668513SM	8	ROLLER-0.652ID 2.50 OD 4.10LG BLACK POLY
12	5049040CSM	1	BAR, ROLLER
13	1931352SM	2	BOLT-RD HD SH SQ NK 3/8-16X1.500 G5 BLK
14	1664847SM	6	SCREW-HEX WSHR HD TAPTT5/16-18X0.750BLK
15	1665374SM	3	STRAP-1.00WD 3.06LG .134THK ROLLER ECOAT
16	5401111CSM	1	WELD, SHAFT, DECK LIFT, 50" ORANGE
17	1724538ASM	1	SHORT BLOWOUT BAFFLE BLACK (S/N: 2012651720 & Below)
18	5025145X8SM	2	BOLT, 5/16-18 X 1, CARRIAGE
19	5025011X8SM	2	CAPSCREW, HEX HEAD,5/16-18 X 1
20	5025155SM	2	WASHER, 5/16 SAE
21	5025392SM	9	NUT, 5/16-18 HEX NYLOCK FLANGE
22	2108765SM	2	BOLT-WHEEL 3/8-16X2.781 .750 THRD YELLOW
23	1960027SM	4	WASHER-0500(0.51IDX0.87ODX.06THK) BLK
24	1714760SM	2	WHEEL- 2.00 WIDE 3.92 DIA 0.531ID POLY
25	5049017CSM	1	BRACKET, GAUGE WHEEL, LH
26	5025394SM	3	NUT, 3/8-16 HEX NYLOCK FLANGE
27	5049018CSM	1	BRACKET, GAUGE WHEEL, RH
28	5025145X6SM	16	BOLT, 5/16-18 X 3/4", CARRIAGE
29	5025057SM	10	NUT, 5/16 - 18 HEX NYLON LOCK
30	1735184ASM	1	BLOWOUT BAFFLE, RH 50" MOWER - BLACK
31	1716870ASM	1	BLOWOUT BAFFLE, LH 50" MOWER - BLACK
32	5100275SM	1	ROD, DECK LIFT LINKAGE
33	5049184SM	3	SPACER, HYDRO PULLEY
34	5023174SM	1	CLEVIS, 1/2-20, STEEL
35	5025328X12SM	1	PIN, CLEVIS, 1/2 X 1 1/2, YZP
36	5025210SM	2	PIN, HAIR, .0915 X 1-7/8
37	5025089SM	1	NUT, 1/2-20 HEX JAM
38	5025305SM	1	WASHER, .41 X 1.75 X .14
39	5025013X12SM	1	BOLT, 3/8-16 X 1-1/2 GD5 YZ
40	5025156SM	1	WASHER, 3/8 SAE
41	5025214X8SM	2	PIN, CLEVIS, 3/8 X 1
42	5049482CSM	1	LINK, ROLLER REVERSE
43	5021171SM	2	CLEVIS 3/8-24, PLASTIC
44	5101136SM	1	ROD, LEVER CONNECTING

### Footnotes

The above parts group applies to the following Mfg. Nos.:

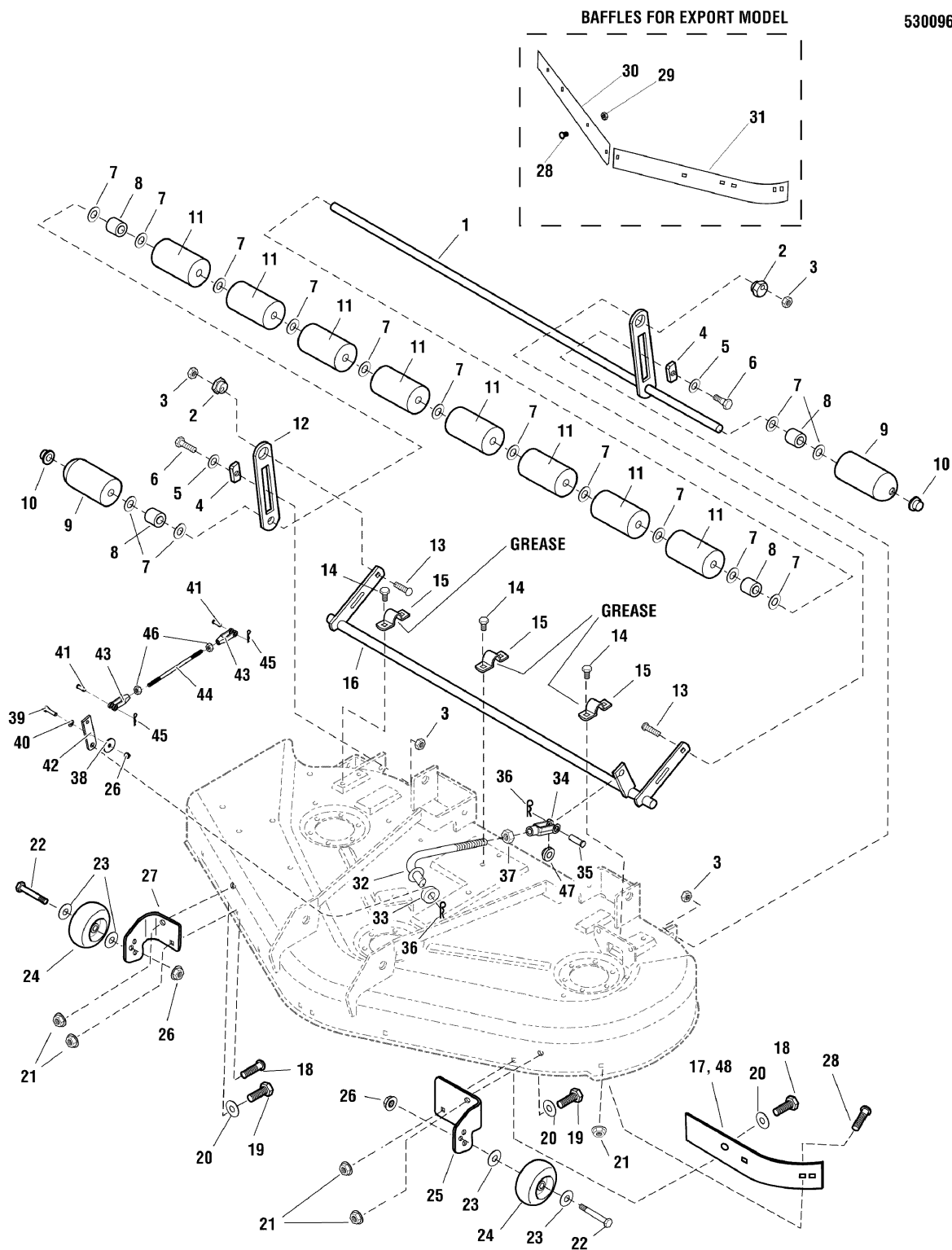
5900662 - ZT3000B24

5900684 - ZT3000B24

# 50" Mower Deck - Rollers Group

NOTE: Unless noted otherwise, use the standard hardware torque specification chart.

5300965



The above parts group applies to the following Mfg. Nos.:

5900662 - ZT3000B24

5900684 - ZT3000B24

## 50" Mower Deck - Rollers Group

---

REF NO.	PART NO.	QTY.	DESCRIPTION
45	5025201X6SM	2	PIN, COTTER, 3/32" X 3/4
46	5025309SM	2	NUT, 3/8-24 HEX JAM
47	5048258SM	1	BUSHING, DECK SUPPORT
48	1734181ASM	1	BAFFLE FRONT 44, 50 MOWERS (S/N: 2012651721 & Above)

### Footnotes

---

**The above parts group applies to the following Mfg. Nos.:**

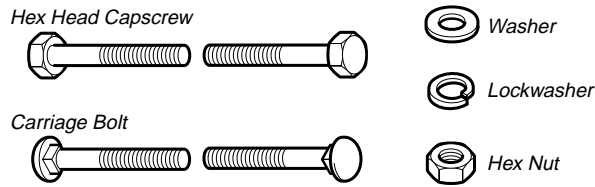
5900662 - ZT3000B24

5900684 - ZT3000B24



# Hardware Identification & Torque Specifications

## Common Hardware Types

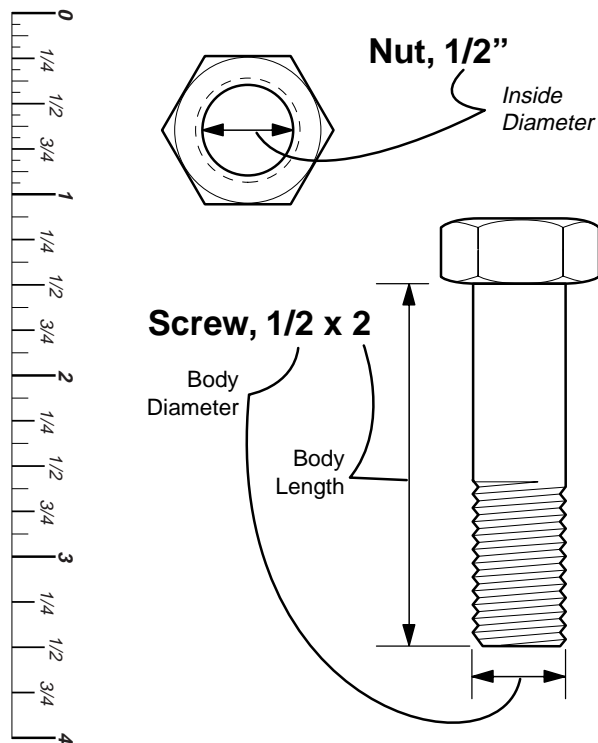


## Standard Hardware Sizing

When a washer or nut is identified as 1/2", this is the *Nominal size*, meaning the *inside diameter* is 1/2 inch; if a second number is present it represents the *threads per inch*

When bolt or capscrew is identified as 1/2 - 16 x 2", this means the *Nominal size*, or *body diameter* is 1/2 inch; the second number represents the *threads per inch* (16 in this example, and the final number is the *body length* of the bolt or screw (in this example 2 inches long).

**The guides and ruler furnished below are designed to help you select the appropriate hardware and tools.**



## Torque Specification Chart

FOR STANDARD MACHINE HARDWARE (Tolerance ± 20%)

Hardware Grade	No Marks SAE Grade 2		SAE Grade 5		SAE Grade 8	
	in/lbs ft/lbs	Nm.	in/lbs ft/lbs	Nm.	in/lbs ft/lbs	Nm.
8-32	19	2.1	30	3.4	41	4.6
8-36	20	2.3	31	3.5	43	4.9
10-24	27	3.1	43	4.9	60	6.8
10-32	31	3.5	49	5.5	68	7.7
1/4-20	66	7.6	8	10.9	12	16.3
1/4-28	76	8.6	10	13.6	14	19.0
5/16-18	11	15.0	17	23.1	25	34.0
5/16-24	12	16.3	19	25.8	27	34.0
3/8-16	20	27.2	30	40.8	45	61.2
3/8-24	23	31.3	35	47.6	50	68.0
7/16-14	30	40.8	50	68.0	70	95.2
7/16-20	35	47.6	55	74.8	80	108.8
1/2-13	50	68.0	75	102.0	110	149.6
1/2-20	55	74.8	90	122.4	120	163.2
9/16-12	65	88.4	110	149.6	150	204.0
9/16-18	75	102.0	120	163.2	170	231.2
5/8-11	90	122.4	150	204.0	220	299.2
5/8-18	100	136	180	244.8	240	326.4
3/4-10	160	217.6	260	353.6	386	525.0
3/4-16	180	244.8	300	408.0	420	571.2
7/8-9	140	190.4	400	544.0	600	816.0
7/8-14	155	210.8	440	598.4	660	897.6
1-8	220	299.2	580	788.8	900	1,244.0
1-12	240	326.4	640	870.4	1,000	1,360.0

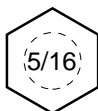
### NOTES

- These torque values are to be used for all hardware excluding: locknuts, self-tapping screws, thread forming screws, sheet metal screws and socket head setscrews.
- Recommended seating torque values for locknuts:
  - for prevailing torque locknuts - use 65% of grade 5 torques.
  - for flange whizlock nuts and screws - use 135% of grade 5 torques.
- Unless otherwise noted on assembly drawings, all torque values must meet this specification.

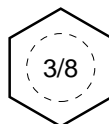
## Wrench & Fastener Size Guide



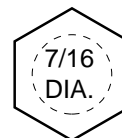
1/4" Bolt or Nut  
Wrench—7/16"



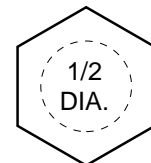
5/16" Bolt or Nut  
Wrench—1/2"



3/8" Bolt or Nut  
Wrench—9/16"



7/16" Bolt or Nut  
Wrench (Bolt)—5/8"  
Wrench (Nut)—11/16"



1/2" Bolt or Nut  
Wrench—3/4"

***Simplicity***

---

MANUFACTURING, INC.  
500 N. Spring Street / PO Box 997  
Port Washington, WI 53074-0997 USA

[www.simplicitymfg.com](http://www.simplicitymfg.com)

Briggs and Stratton Yard Power Products Group  
Copyright © 2008 by Briggs and Stratton Corporation  
Milwaukee, WI, USA. All rights reserved

