

---

# ***Simplicity***®

---

**OWNER'S  
MANUAL**

**26 1/2" REVITALIZER**

MFG. NO. 629

SIMPLICITY MANUFACTURING COMPANY



SER. FORM - OP22  
LITHO IN U.S.A.

1327

## PROTECT YOURSELF AND OTHERS

- Know the controls and how to stop quickly – READ THE OWNER'S MANUAL.
  - Do not allow children or young teenagers to operate vehicle or adults to operate it without proper instruction.
  - Do not carry passengers. Keep children and pets a safe distance away.
  - Clear work area of objects which might be picked up and thrown.
  - Disengage all clutches and shift into neutral before starting engine.
  - Disengage power to implement (s) and stop engine before leaving operator position.
  - Disengage power to implement (s) and stop engine before making any repairs or adjustments.
  - Disengage power to implement (s) when transporting or not in use.
  - Take precautions, such as disengaging power take-off, lowering implements, shifting into neutral, setting parking brake, stopping engine and removing key when leaving vehicle unattended.
  - Don't stop or start suddenly when going uphill or downhill.
  - Reduce speed on slopes and in sharp turns to prevent tipping or loss of control.
  - Stay alert for holes in terrain and other hidden hazards.
  - Use care when pulling loads or using heavy equipment.
    - A. Use only approved drawbar hitch points.
    - B. Limit loads to those you can safely control.
    - C. Don't turn too sharp, and use care when backing.
    - D. Use counterweight (s) or wheel weights when suggested in owner's manual.
- Watch out for traffic when crossing or near roadways.
- When using any attachments, never direct discharge of material toward bystanders nor allow anyone near vehicle while in operation.
  - Handle gasoline with care -- it is highly flammable.
    - A. Use approved gasoline container.
    - B. Never remove cap or add gasoline to a running or hot engine or fill fuel tank indoors. Wipe up spilled gasoline.
    - C. Replace gasoline cap securely.
    - D. Open doors if engine is run in garage -- exhaust gasses are dangerous.
  - Keep vehicle and attachments in good operating condition and keep safety devices in place. Use guards as instructed in owner's manual.
  - Do not operate equipment when barefoot or wearing open sandals. Always wear substantial footwear.
  - Do not put hands or feet near or under rotating parts. Keep clear of discharge opening at all times.
  - Before cleaning, inspecting, adjusting, or repairing the tractor or any attachments stop the engine, remove the ignition key (electric start models) and be sure all blades and other moving parts have stopped.
  - Stop blade (s) when crossing gravel drive, walks or roads.
  - After striking a foreign object stop the mower and remove the ignition key. Thoroughly inspect the mower for any damage, and repair the damage before restarting and operating the mower.
  - If your equipment should start to vibrate abnormally, stop the engine and check immediately for the cause. Vibration is generally a warning of trouble.
  - Do not run the engine indoors.
  - Look to be sure that children are not behind the tractor, before backing up.
  - When mowing with a tractor mounted mower, mow up-and-down on slopes, never across or horizontally. To prevent the danger of overturning, exercise extreme caution when stopping, starting or changing direction.
  - Check blade and engine mounting bolts for proper tightness at frequent intervals.
  - Keep all nuts, bolts, and screws tight to be sure equipment is in safe working condition.
  - Never store equipment with gasoline in the tank inside of a building where fumes may reach an open flame or spark. Allow engine to cool before storing in any enclosure.
  - To reduce fire hazard keep engine free of grass, leaves or excessive grease.
  - Never operate any attachment without all guards, deflectors, and other protective covering in place.
  - Keep the area of operation clear of all persons, particularly small children, and pets.
  - Thoroughly inspect the area where the equipment is to be used and remove all stones, sticks, wire, bones and other foreign objects.
  - Check fuel before starting engine. Do not fill gasoline tank when engine is running or while engine is still hot. Wipe off any spilled gasoline before starting engine. Do not smoke when fueling engine or around open gasoline containers.
  - Mow only in daylight or in good artificial light.
  - Do not change engine governor, settings or overspeed engine.

Mfg. No. 629 for use on Broadmoor, Yeoman And Serf.

### Required Accessories

1 - Mfg. No. 594 Lift Lever Kit (Serf only)

### Recommended Accessories

1 - Mfg. No. 466 Front Weight

## INSTALLATION

1. Remove the drawbar bracket bolts from the rear support plate on the transmission. Place the hitch plate from the kit between the drawbar bracket and the support with the notches up. Secure with the 3/8-16 x 1-1/2 inch capscrews, nuts and lockwashers provided. (See Figure 1)

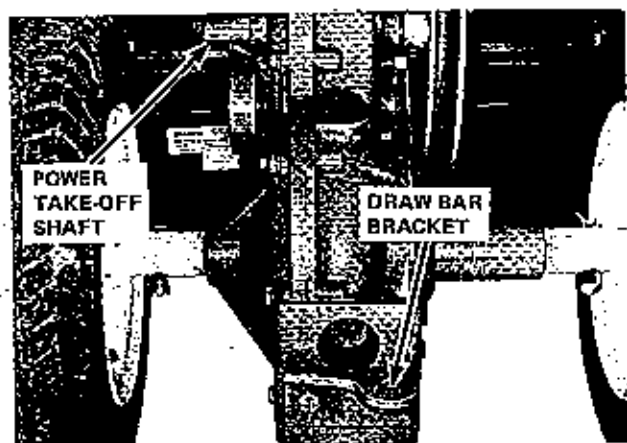


FIGURE 1

2. Remove the tape from the transmission power take-off shaft. Install the pulley and key and secure with the set-screw provided. Install the drive pulley from the kit with the hub inward and the outer side flush with the shaft end.

Install the belt stops. Remove the capscrew holding the brake band to the transmission and mount the smaller belt stop as shown, with two flat washers on the inside of the belt stop loop and one on the outside. Install the longer stop in the slotted hole of the transmission side plate, using flat washer on the outside of the belt stop loop. (See Figure 2)

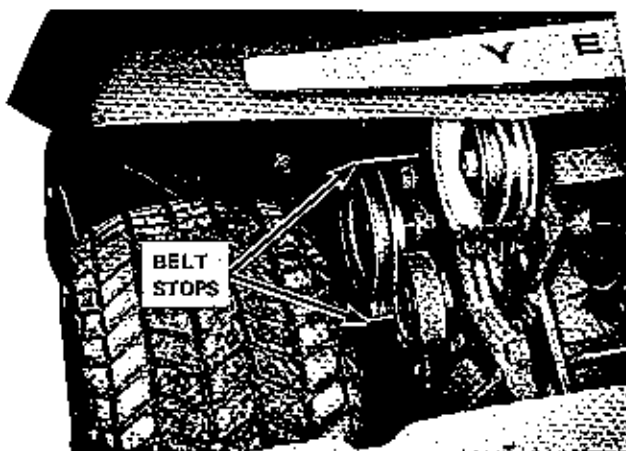


FIGURE 2

3. Position the revitalizer unit at the rear of the tractor. Lift the front bracket up and drop the crossbar into the notches on the hitch bracket. The pin on the crossbar clevis goes through the hole in the original tractor drawbar bracket and is secured with a spring clip. Mount the upper link ears on the transmission side plates using the long pin and two spring clips. (See Figure 3)

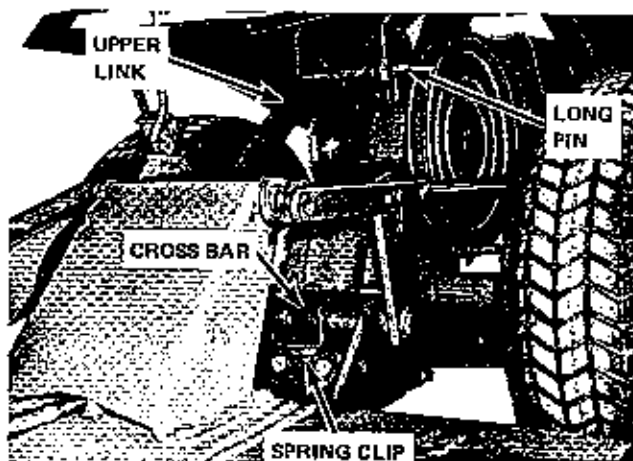


FIGURE 3

4. Install the lift rod on the tractor lift lever. Attach the flat end of the rod to the lift arm on the revitalizer. Use the proper hole for your tractor:

Hole 1: Yeoman

Hole 2: Serf

Hole 3: Broadmoor (See Figure 4)

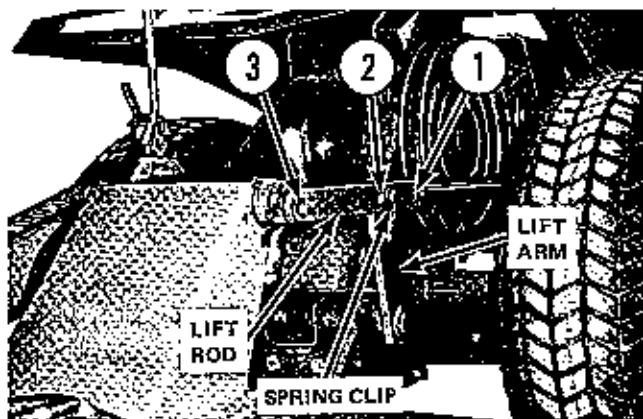


FIGURE 4

5. Lower the unit to the ground. Pull the clutch lever at the top center of the unit FORWARD to disengage position

## OPERATION

It is best to use the mower and revitalizer together so long grass will not interfere with the revitalizer. This also allows you to perform two operations in one pass.

With the mower and revitalizer disengaged and in the raised position, move to the area to be mowed and revitalized. When you have reached the work area, release the lift lever and lower the mower and revitalizer to the operating position. When using the revitalizer, it is best to raise it when turning corners, however, it is neither advised or necessary to raise the mower. This may be easily accomplished by disconnecting the mower lift chain from the lift lever by removing the spring clip and pin.

### Depth Adjustment

The cutting depth may be precisely adjusted by turning the handle at the rear of the revitalizer clockwise to raise the knives and counterclockwise to lower them. In spring and fall, set the knives to cut 1/2 inch deep. For summer use or when the ground is dry, set the knives at 1/8 inch depth. (See Figure 6)

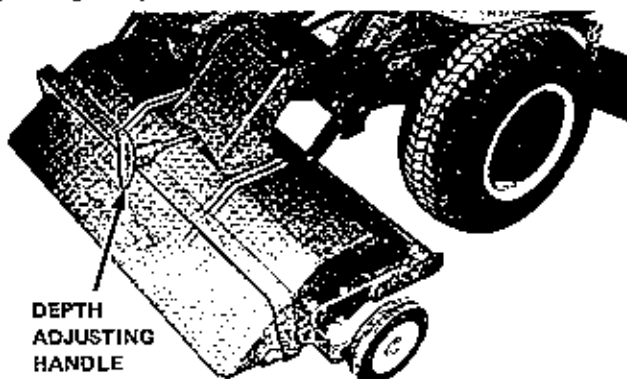


FIGURE 6

### Travel Speed and Direction

The revitalizer should be used with the tractor in first gear at three-fourths to full engine speed. Travel the long direc-

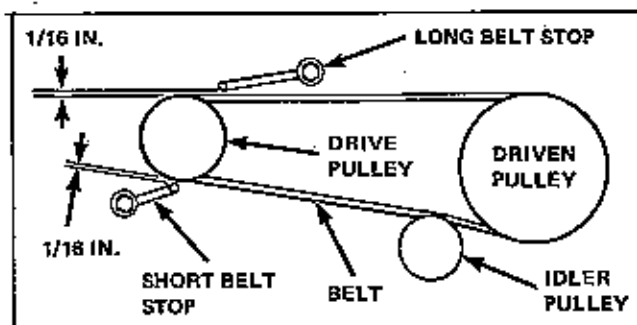


FIGURE 5

and install the drive belt. Be sure the belt is properly seated in the pulleys. There must be 1/8 inch clearance between the top belt stop and 1/4 inch clearance between the bottom belt stop and the belt when the drive is engaged. (See Figure 5)

tion of the lawn to minimize the number of turns. Before turning, disengage the revitalizer and push the lift lever forward to raise it. On the second and successive passes, be sure to drive so the revitalizer slightly overlaps that portion of the lawn already revitalized.

**NOTE: DO NOT MAKE SHARP TURNS WITH UNIT IN GROUND, SINCE THIS WILL CAUSE LAWN DAMAGE.**

### Preparing a Seedbed

The revitalizer may be used to prepare a seedbed for reseeding sparse areas by making a second pass crosswise to the first one. Use a depth setting of approximately one half inch.

Dead grass and thatch should be removed after using the revitalizer. A Simplicity vacuum collector system is excellent for this purpose.

If wire or other foreign material get caught in the revitalizer, depress the clutch immediately. Since the revitalizer is driven off the transmission, the revitalizer will not turn when the clutch is disengaged. Disengage the revitalizer clutch and stop the tractor engine before attempting to work around the revitalizer.

### Trouble Shooting

If the thatch is not being lifted effectively:

1. Be sure the tractor is in first gear.
2. Set the knife adjustment or give a cut one-eighth to one half inch deep.
3. Be sure the grass is cut prior to revitalizing, so long grass does not interfere.
4. Check to see if the belt is slipping. (See "Adjustments")

If too much grass is being torn up;

1. Check to see if wire, sticks, etc., are caught on the knives.
2. Check the depth setting to be sure it is not set lower than one half inch.

## ADJUSTMENTS

### BELT STOPS

The belt stops at the transmission pulley should be adjusted so the top one is one-eighth inch and the bottom one one-fourth inch from the belt when the revitalizer is engaged.

1. Loosen the bolts holding the belt stops to the frame.
2. Adjust the belt stops and tighten the bolts.
3. Check the adjustment after the bolts have been tightened (See Figure 5).

### Clutch Idler Adjustment:

The clutch idler is normally in correct adjustment when there is one-fourth inch between the adjustment collar and rod guide. If readjustment is necessary because of belt stretch or slippage, proceed as follows:

1. Disengage the revitalizer drive.
2. Loosen the set collar set screw.
3. Move the set collar closer to the spring to make the belt tighter and further from the spring to loosen it.

4. Tighten the setscrew.

5. Check the distance between the set collar and rod guide. Only enough belt tension is necessary so the revitalizer will drive without slipping. Excess tension will cause rapid wear of belts and idler pulley bearings. (See Figure 7)

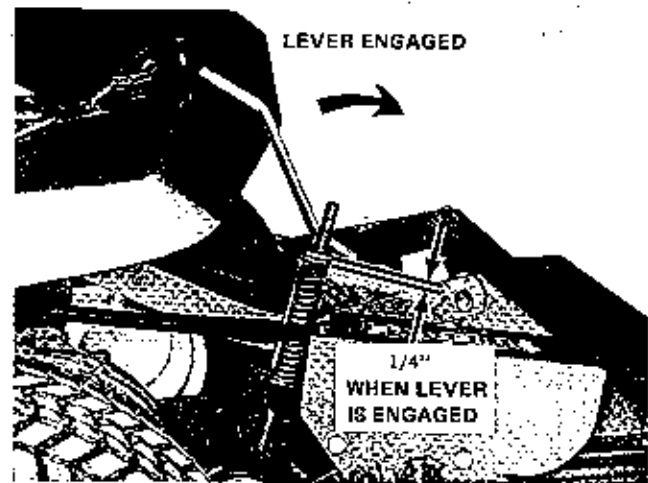


FIGURE 7

## MAINTENANCE

After each use: Clean all wire, twine or other foreign material from the knife shaft and underside of the housing.  
Every 10 hours: Grease the zerk located on the bearing housing and put a few drops of light engine oil on all pivot points. (See Figure 8)

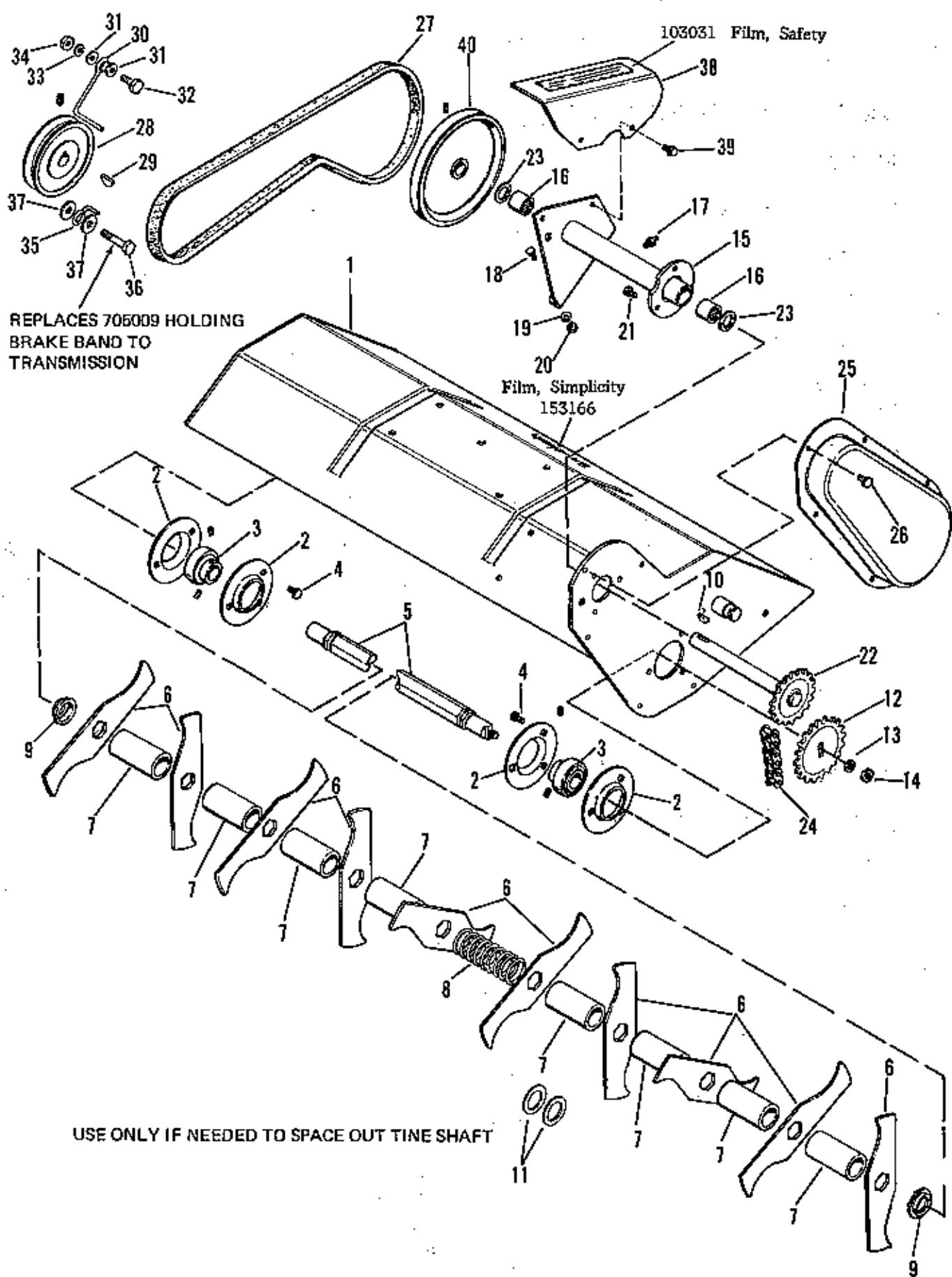


MFR'S. NO. 629 - 26" LAWN REVITALIZER

FIGURE 8

KNIVES and SHAFT	NUMBER OF KNIVES: 10
	KNIFE DIAMETER: 8 Inches
	KNIFE SPACING: 3 Inches
	DEPTH ADJUSTMENT: 0 to 1-1/4 Inches
	KNIFE MATERIAL: Hardened Steel
	KNIFE SHAFT MATERIAL: 7/8" Hex. Hardened Steel
DIMENSIONS	OVERALL WIDTH: 37 Inches
	OVERALL LENGTH: (Including Tractor) 72 Inches
	SHIPPING WEIGHT: 77 Lbs.

# HOUSING, TINES AND DRIVE



REPLACES 705009 HOLDING  
BRAKE BAND TO  
TRANSMISSION

Film, Simplicity  
153166

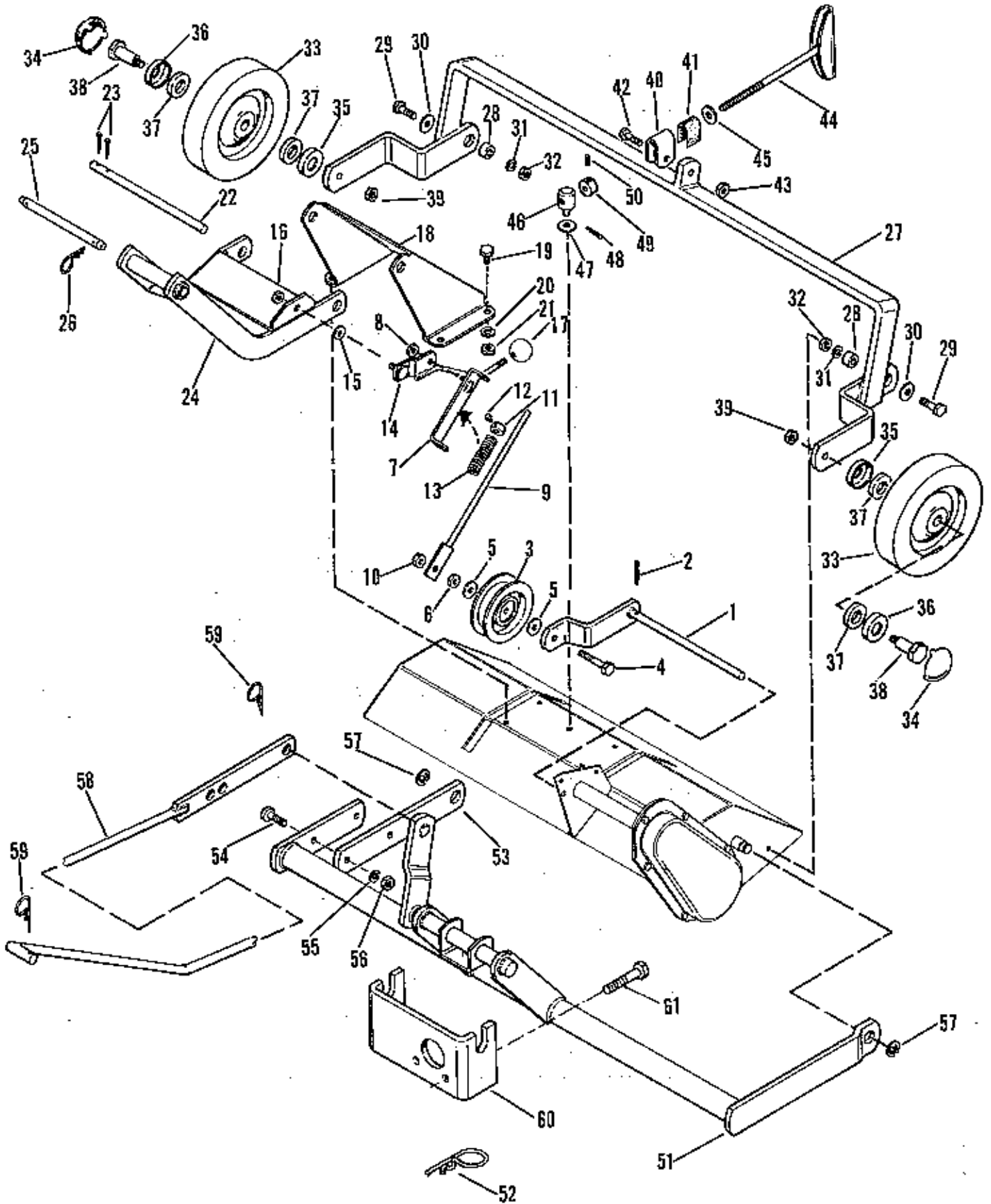
103031 Film, Safety

USE ONLY IF NEEDED TO SPACE OUT TINE SHAFT

## HOUSING, TINES AND DRIVE

Ref. No.	Part No.	Qty. Req.	Description
1	170338	1	Housing Assembly
2	170388	4	Bearing Flange
3	170387	2	Bearing
4	715083	6	Thread Forming Screw, 5/16"-18 x 1/2" lg.
5	170334	1	Tine Shaft
6	170333	10	Tine
7	170337	8	Spacer
8	170417	1	Compression Spring
9	170881	2	Spacer
10	725003	1	Key Woodruff 3/16" x 3/4"
11	101022	2	Washer
12	170372	1	Sprocket
13	719002	1	Plain Washers, 5/16"
14	717533	1	Hex Nut, Full, 3/8"-16
15	170332	1	Bearing Housing Assembly
16	108054	2	Needle Bearings
17	727002	1	Grease Fitting
18	705012	2	Hex Capscrew, 5/16"-18 x 5/8" lg.
19	720001	2	Lock Washer 5/16"
20	717001	2	Hex Nut, Full, 5/16"-18
21	715067	3	Hex Screw, Washer Hd., 1/4"-20 x 3/8" Taprite
22	170374	1	Drive Shaft Assembly
23	153079	2	Washer
24	170393	1	Chain
25	170335	1	Chain Guard
26	715067	6	Hex Screw, Washer Hd., 1/4"-20 x 3/8" lg. Taprite
27	108248	1	"V" Belt
28	170395	1	Pulley
29	725003	1	Key, Woodruff 3/16" x 3/4"
30	170396	1	Belt Stop
31	719006	2	Plain Washer, 1/4"
32	705001	1	Hex Capscrew, 5/16"-18 x 7/8" lg.
33	720001	1	Lock Washer, 5/16"
34	717001	1	Hex Nut, Full 5/16"-18
35	170397	1	Belt Stop
36	705010	1	Hex Capscrew, 3/8"-16 x 1-3/4" lg.
37	719002	3	Plain Washer, 5/16"
38	170420	1	Belt Guard
39	715110	2	Thread Forming Screw, 5/16"-18 x 3/8" lg.
40	170336	1	Pulley

# FRAME AND WHEELS





FRAME AND WHEELS

Ref. No.	Part No.	Qty. Req.	Description
1	170390	1	Idler Arm Assembly
2	722006	1	Cotter Pin, 1/8 x 1" lg.
3	154534	1	Idler Pulley
4	705010	1	Hex Capscrew, 3/8"-16 x 1-3/4" lg.
5	719002	2	Plain Washer, 5/16"
6	717003	1	Hex Nut, Full, 3/8"-16
7	158406	1	Rod Guide Assembly
8	717530	1	Hex Nut Full Lock, Jam, 5/16"-18
9	170352	1	Clutch Rod Assembly
10	717510	1	Hex Nut, Full, 3/8"-16
11	8191022	1	Set Collar
12	713001	1	Set Screw, Sq. Hd., Clip Pt. 1/4"-20 x 3/8"
13	163103	1	Spring
14	170349	1	Clutch Lever Assembly
15	159134	1	Special Washer
16	717511	1	Hex Nut, Full, 5/16"-18
17	122005	1	Knob
18	170398	1	Arm Support
19	705012	4	Hex Capscrew, 5/16"-18 x 5/8" lg.
20	720001	4	Lock Washer, 5/16"
21	717001	4	Hex Nut, Full, 5/16"-18
22	170345	1	Pivot Pin
23	722006	2	Cotter Pin, 1/8"x 1" lg.
24	170399	1	Link Assembly
25	156268	1	Pin
26	8161045	2	Spring Clip
27	170421	1	Frame Assembly
28	153073	2	Spacer
29	705005	2	Hex Capscrew, 3/8"-16 x 1" lg.
30	719002	2	Plain Washer, 5/16"

Ref. No.	Part No.	Qty. Req.	Description
31	720002	2	Lock Washer 3/8"
32	717003	2	Hex Nut, Full, 3/8"-16
33	108702	2	Wheel
34	108783	2	Hub Cap
35	108827	2	Seal Housing
36	108820	2	Seal Housing
37	108819	4	Wheel Seal
38	108764	2	Wheel Bolt
39	717524	2	Hex Nut, Lock, Jam 3/8"-16
40	152050	1	Rod Guide
41	121175	1	Liner
42	705019	1	Hex Capscrew, 5/16"-18 x 1-1/4" lg.
43	717511	1	Hex Nut Full, Lock, 5/16"-18
44	108415	1	Adjusting Screw Assembly
45	719001	1	Plain Washer, 3/8"
46	108172	1	Pivot
47	719002	1	Plain Washer, 5/16"
48	722001	1	Cotter Pin, 3/32" x 3/4" lg.
49	105201	1	Set Collar
50	713505	1	Soc. Hd. Set Screw, Hollow Pt., 1/4"-20 x 5/16" lg.
51	170403	1	Hitch Assembly
52	106788	1	Pin
53	170415	1	R.H. Pivot Bar
54	705007	2	Hex Capscrew, 5/16"-18 x 1" lg.
55	720001	2	Lock Washer, 5/16"
56	717001	2	Hex Nut, Full, 5/16"-18
57	158596	2	Retaining Ring
58	170447	1	Lift Rod Assy.
59	8161045	2	Spring Clip
60	123096	1	Attachment Hitch
61	715042	2	Hex Capscrew, 3/8"-16 x 1-1/4" lg.

The first part of the document discusses the importance of maintaining accurate records of all transactions. It emphasizes that every entry, no matter how small, should be recorded to ensure the integrity of the financial data. This includes not only sales and purchases but also expenses and income.

The second part of the document provides a detailed breakdown of the accounting process. It starts with the identification of the accounting period, followed by the collection and classification of data. The next steps involve the recording of transactions in the journal, the posting of these transactions to the ledger, and the preparation of trial balances to check for errors.

The third part of the document focuses on the preparation of financial statements. It explains how the data from the ledger is used to create the balance sheet, the income statement, and the cash flow statement. Each statement provides a different perspective on the company's financial health and performance.

The final part of the document discusses the importance of internal controls and audits. It highlights how these measures help to prevent fraud and ensure that the financial statements are accurate and reliable. It also mentions the role of external auditors in providing an independent opinion on the company's financial statements.

