



## Pacer

### Series Transaxle Drive Walk-Behind Mower

#### 15HP Product

**Mfg. No. Description**

1694895 Pacer, 15HP B&S Walk-Behind

2690447 Pacer, 15HP B&S w/34" Deck

#### 17.5HP Product

**Mfg. No. Description**

5900630 Pacer, 17.5HP B&S w/34" Deck

5900766 Pacer, 17.5HP B&S w/32" Deck

#### Mower Decks

**Mfg. No. Description**

1694287 34" Mower Deck

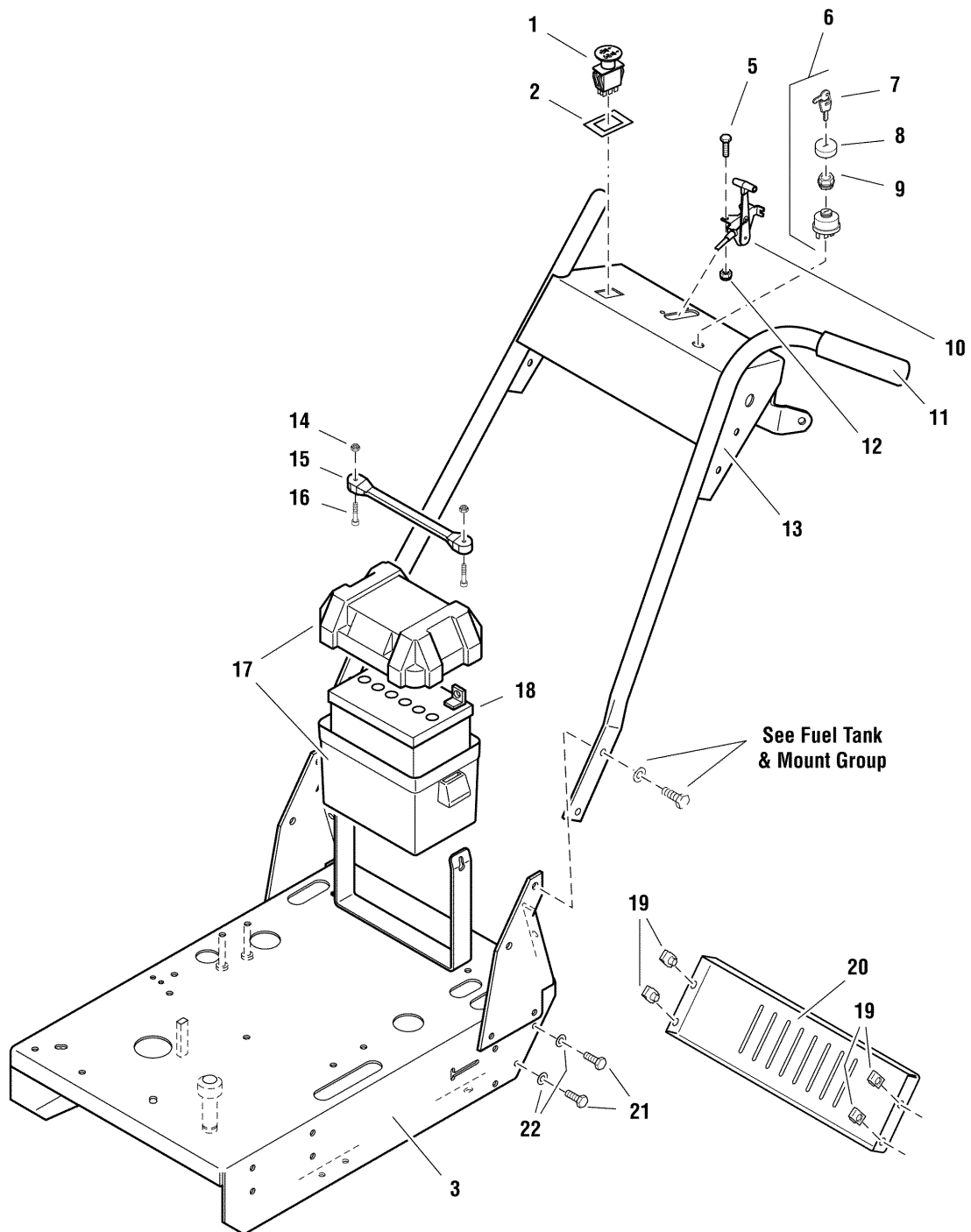


<b>PRODUCT COMPONENTS</b>	<b>PAGES</b>
Engine Frame & Handle Bars Group .....	4
Engine Frame & Handle Bars Group .....	6
Engine & PTO Group .....	8
Engine & PTO Group .....	10
Transaxle - SERVICE PARTS .....	12
Transaxle, Mount & Drive Idler Group .....	14
Motion Control, Parking Brake & Operator Presence Group .....	16
Motion Control, Parking Brake & Operator Presence Group .....	20
Fuel Supply Hose & Tank Replacement Parts Group .....	22
Fuel Tank & Mount Group (S/N: 2012825357 & Below) .....	24
Fuel Tank & Mount Group (S/N: 2012825358 & Above) .....	26
Electrical Group (S/N: 2013136020 & Below) .....	28
Electrical Group (S/N: 2013136021 & Above) .....	30
Wheel & Tire Group .....	32
Decal Group .....	34
Decal Group .....	36
32" Mower Deck - Frame, Caster & Shield .....	38
32" Mower Deck - Height Adjustment .....	40
32" Mower Deck - Housing, Spindles, Blades & Pulleys .....	42
34" Mower Deck - Belt, Idler Arm & Hitch .....	44
34" Mower Deck - Frame, Caster & Shield .....	46
34" Mower Deck - Grass Mulcher .....	48
34" Mower Deck - Height Adjustment & Roller Bar .....	50
34" Mower Deck - Housing, Arbors & Blades .....	54
<b>Torque Specification Chart .....</b>	<b>Inside Back Cover</b>

# Engine Frame & Handle Bars Group (17/32 Model)

5301452

NOTE: Unless noted otherwise,  
use the standard hardware torque  
specification chart.



The above parts group applies to the following Mfg. Nos.:  
5900766 - Pacer

## **Engine Frame & Handle Bars Group (17/32 Model)**

<b>REF NO.</b>	<b>PART NO.</b>	<b>QTY.</b>	<b>DESCRIPTION</b>
1	5022180	1	SWITCH, BLADE ENGAGEMENT
2	5022222	1	RING, SWITCH RETAINER
3	5049229C	1	WELD, ENGINE DECK, HC36 - ORG
4	5025126	2	NUT, 1/4-20 HEX SERR. FLANGE ( For Battery Terminals - Not Shown)
5	5025010X6	2	BOLT, 1/4-20 X 3/4 GD5 YZ (2 For Battery Terminals - Not Shown)
6	5020927	1	SWITCH, IGNITION, 6 POST (Includes Ref. No. 7-9)
7	5022789	1	KEY, IGNITION, MOLDED SET
8	5022790	1	COVER, PLASTIC SNAP ON
9	5022791	1	NUT, PLASTIC
10	5048231	1	CABLE, THROTTLE CONTROL, 40"
11	5021841	2	GRIP, FOAM, .940 X 5 X .187
12	5025391	2	NUT, 1/4-20 HEX NYLOCK FLANGE
13	5061279C	1	WELD, HANDLE BAR
14	5025271	2	NUT, #10-24 HEX NYLON LOCK
15	5021670	1	STRAP, RUBBER
16	5025270	2	SCREW, #10-24 X 1 RS, CZ
17	5100688	1	BATTERY BOX, W/ DRAIN HOLE
18	-	1	BATTERY, WET ( BCIU1, 340 CCA)
19	5022308	4	CLIP, BODY , 5/16-18 FOR 7 GA.
20	5047735C	1	SHIELD, REAR
21	5025011X8	4	BOLT, 5/16-18 X 1 GD5 YZ
22	5025155	4	WASHER, 5/16 SAE

### **Footnotes**

---

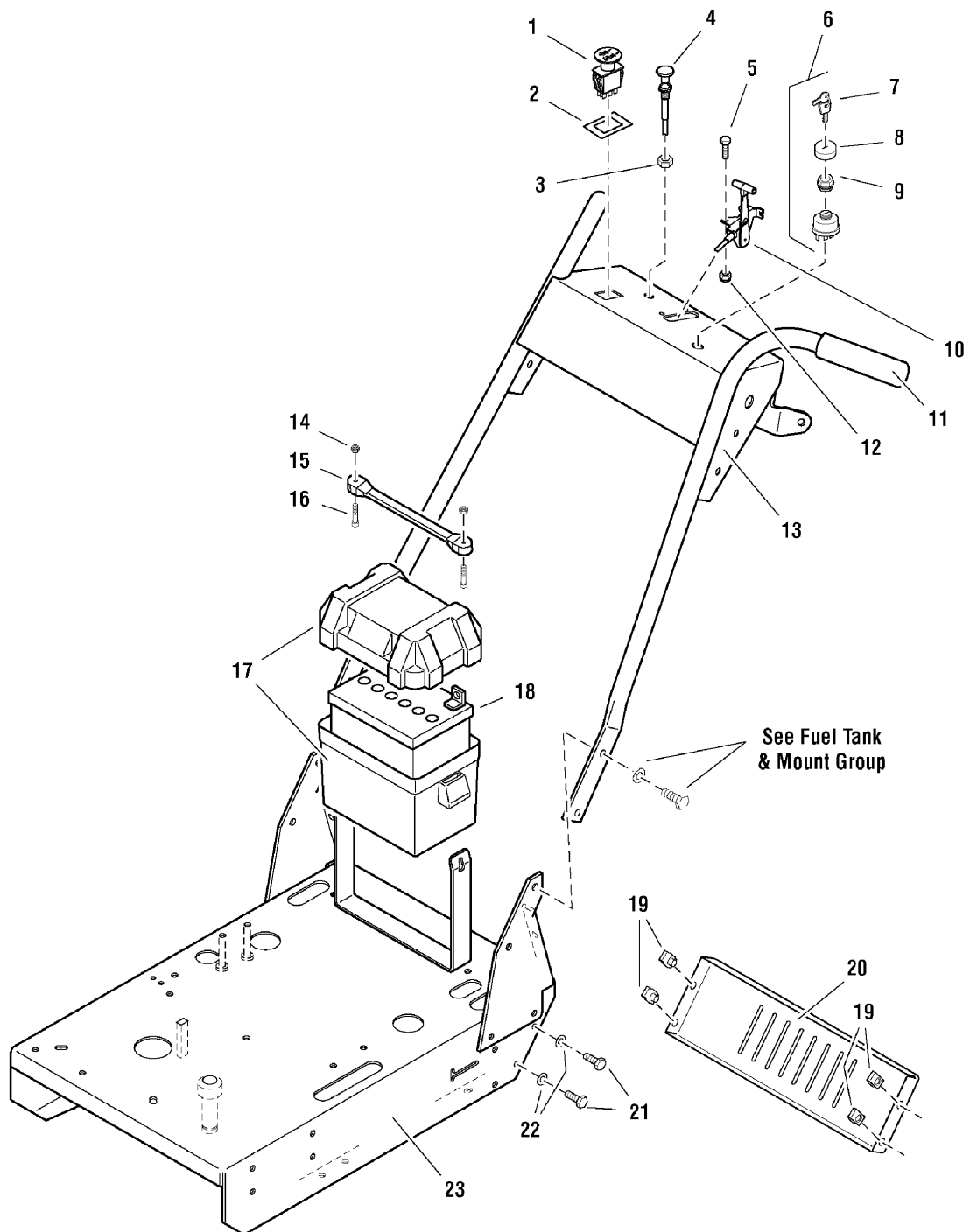
**The above parts group applies to the following Mfg. Nos.:**

5900766 - Pacer

# Engine Frame & Handle Bars Group (226hbre0)

226hbre0

NOTE: Unless noted otherwise,  
use the standard hardware torque  
specification chart.



The above parts group applies to the following Mfg. Nos.:

1694895 - Pacer

2690447 - Pacer

5900630 - Pacer

## **Engine Frame & Handle Bars Group (226hbre0)**

<b>REF NO.</b>	<b>PART NO.</b>	<b>QTY.</b>	<b>DESCRIPTION</b>
1	1722887SM	1	SWITCH, PTO
2	5022222SM	1	SWITCH RETAINER RING
3	5025035SM	1	NUT, 3/8-24 Hex
4	5046501SM	1	CABLE, Choke Control, 47"
5	5025010X6SM	2	BOLT, 1/4-20 x 3/4
6	1686734SM	1	SWITCH, Ignition, Complete
7	1717163SM	1	KEY, Ignition, Molded Set
8	1704346SM	1	COVER
9	5022791SM	1	PLASTIC NUT
10	5047629SM	1	CABLE, Throttle Control, 46"
11	5021841SM	2	GRIP, Foam
12	5025095SM	2	NUT, 1/4-20 Hex Nylon Lock
13	5061279CSM	1	HANDLE BAR ASSEMBLY
14	5025271SM	2	NUT, #10-24 Hex Nylon Lock
15	5021670SM	1	RUBBER STRAP
16	5025270SM	2	SCREW, #10-24 x 1
17	5046188SM	1	BATTERY BOX
18	-	1	BATTERY, Lawn & Garden, 12V (BCIU1, 340 CCA)
19	5022308SM	4	BODY CLIP, 5/16-18
20	5047735CSM	1	REAR SHIELD
21	5025011X6SM	4	BOLT, 5/16-18 x 3/4
22	5025155SM	4	WASHER, 5/16" SAE
23	5049229C	1	ENGINE DECK ASSEMBLY

### **Footnotes**

---

#### **The above parts group applies to the following Mfg. Nos.:**

1694895 - Pacer

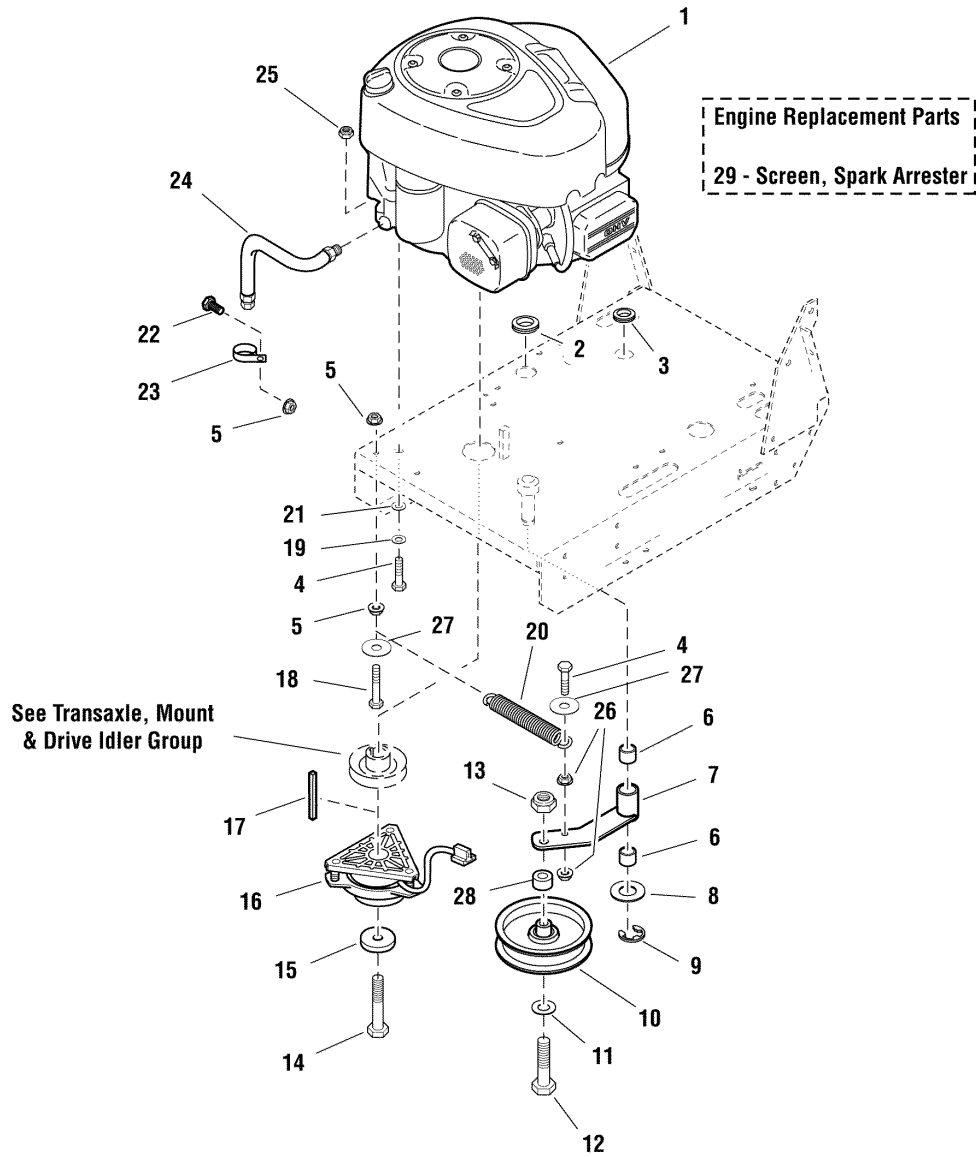
2690447 - Pacer

5900630 - Pacer

# Engine & PTO Group (17/32 Model)

NOTE: Unless noted otherwise,  
use the standard hardware torque  
specification chart.

5301446



The above parts group applies to the following Mfg. Nos.:

5900766 - Pacer



## Engine & PTO Group (17/32 Model)

REF NO.	PART NO.	QTY.	DESCRIPTION
1	-	1	ENGINE, 17.5HP ELS, B&S#31F777-0118-G1
2	5021379SM	1	GROMMET, 7/8
3	5021077SM	1	GROMMET, 1/2
4	5025011X12SM	5	BOLT, 5/16-18 X 1-1/2 GD5 YZ
5	5025139SM	3	NUT, 5/16-18 HEX SERRATED FLANGE (LARGE)
6	5020876CSM	2	BUSHING, BRASS, 3/4 X 1 X 1
7	5047661CSM	1	IDLER WELDMENT, ENGINE DECK
8	5025160SM	1	WASHER, 3/4 SAE
9	5020863SM	1	C-CLIP, 3/4 SHAFT
10	5021369SM	1	PULLEY, IDLER
11	5025158SM	1	WASHER, 1/2 SAE
12	5025017X22SM	1	BOLT, 1/2-13 X 2-3/4 GD5
13	5025056SM	1	NUT, 1/2-13 HEX NYLON LOCK
14	5047632SM	1	BOLT, CRANKSHAFT, 7/16X2-3/4, PATCH YZ
15	5042132SM	1	SPACER, .45 X 1.62 X .37
16	1717664SM	1	CLUTCH,#504586, ELECTRIC, OGURA JD-11
17	5050407X16SM	1	KEY, 1/4" SQ. X 2.00
18	5025011X18SM	1	BOLT, 5/16-18 X 2-1/4 GD5 YZ
19	5025155SM	4	WASHER, 5/16 SAE
20	5021103SM	1	SPRING, EXTENSION
21	5025188SM	1	WASHER, 5/16 INT. TOOTH LOCK
22	5025011X6SM	1	BOLT, 5/16-18 X 3/4 GD5
23	5023173SM	3	CLAMP, HOSE, 1.000 DIA. (2 Not Shown)
24	5048681SM	1	HOSE, OIL DRAIN
25	5025057SM	4	NUT, 5/16-18 HEX NYLON LOCK
26	5025392SM	2	NUT, 5/16-18 HEX NYLOCK FLANGE
27	5025337SM	2	WASHER, 5/16 USS
28	5044609SM	1	SPACER, .52 X 1.00 X .38
29	392390	1	ARRESTOR-SPARK (Not Shown)

### Footnotes

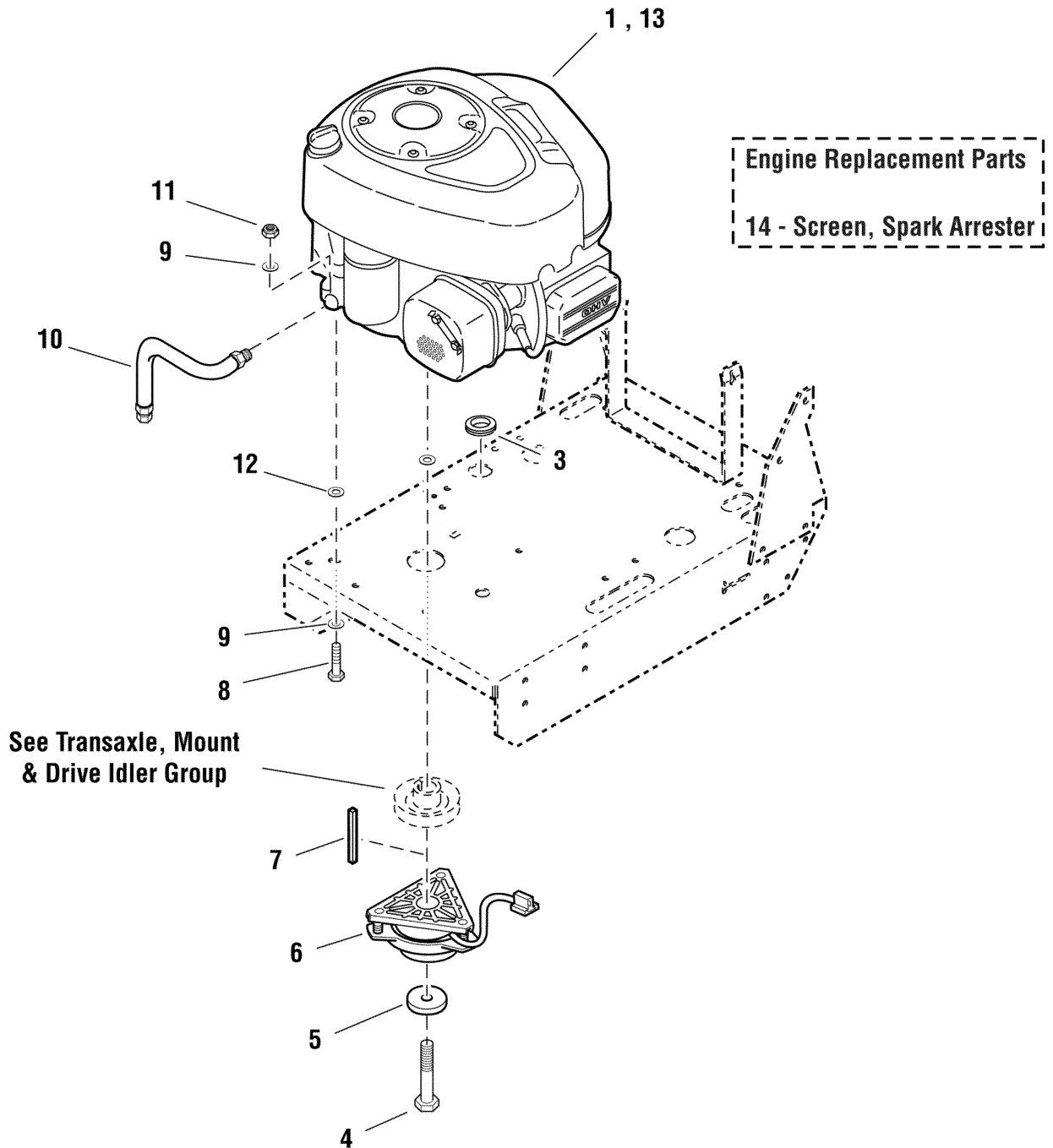
The above parts group applies to the following Mfg. Nos.:

5900766 - Pacer

## Engine & PTO Group (226eng0)

226eng0

NOTE: Unless noted otherwise,  
use the standard hardware torque  
specification chart.



The above parts group applies to the following Mfg. Nos.:

1694895 - Pacer

2690447 - Pacer

5900630 - Pacer

## Engine & PTO Group (226eng0)

REF NO.	PART NO.	QTY.	DESCRIPTION
1	*	1	ENGINE, 15HP Briggs & Stratton, Model 28 (15HP Model Only)
2	5021178X3SM	1	FUEL FILTER
2	*	1	OIL FILTER (492932)
2	*	1	FOAM PRE-CLEANER (697015)
2	*	1	AIR FILTER (697634)
2	*	1	SPARK PLUG (691043)
2	*	1	MUFFLER (697349)
2	*	1	EXHAUST MANIFOLD (496750)
2	*	1	EXHAUST DEFLECTOR (396903)
2	*	2	EXHAUST MANIFOLD GASKET (692236)
3	5021379SM	1	GROMMET
4	5047632SM	1	CRANKSHAFT BOLT, 7/16 x 2-3/4
5	5042132SM	1	CLUTCH RETAINER
6	1686880SM	1	ELECTRIC CLUTCH
7	5050407X3SM	1	KEY, 1/4 Sq. x 2
8	5025011X20SM	1	CAPSCREW, Hex Head, 5/16-18 x 2-1/2
9	5025155SM	5	WASHER, 5/16
10	5048681SM	1	OIL DRAIN HOSE
11	5025057SM	4	NUT, Hex Nylon Lock, 5/16-18
12	5025188SM	2	WASHER, 5/16" Internal Tooth Lock
13	*	1	ENGINE, 17HP Briggs & Stratton (17HP Model Only)
14	392390SM	1	ARRESTOR-SPARK (NOT SHOWN)

### Footnotes

---

#### The above parts group applies to the following Mfg. Nos.:

1694895 - Pacer

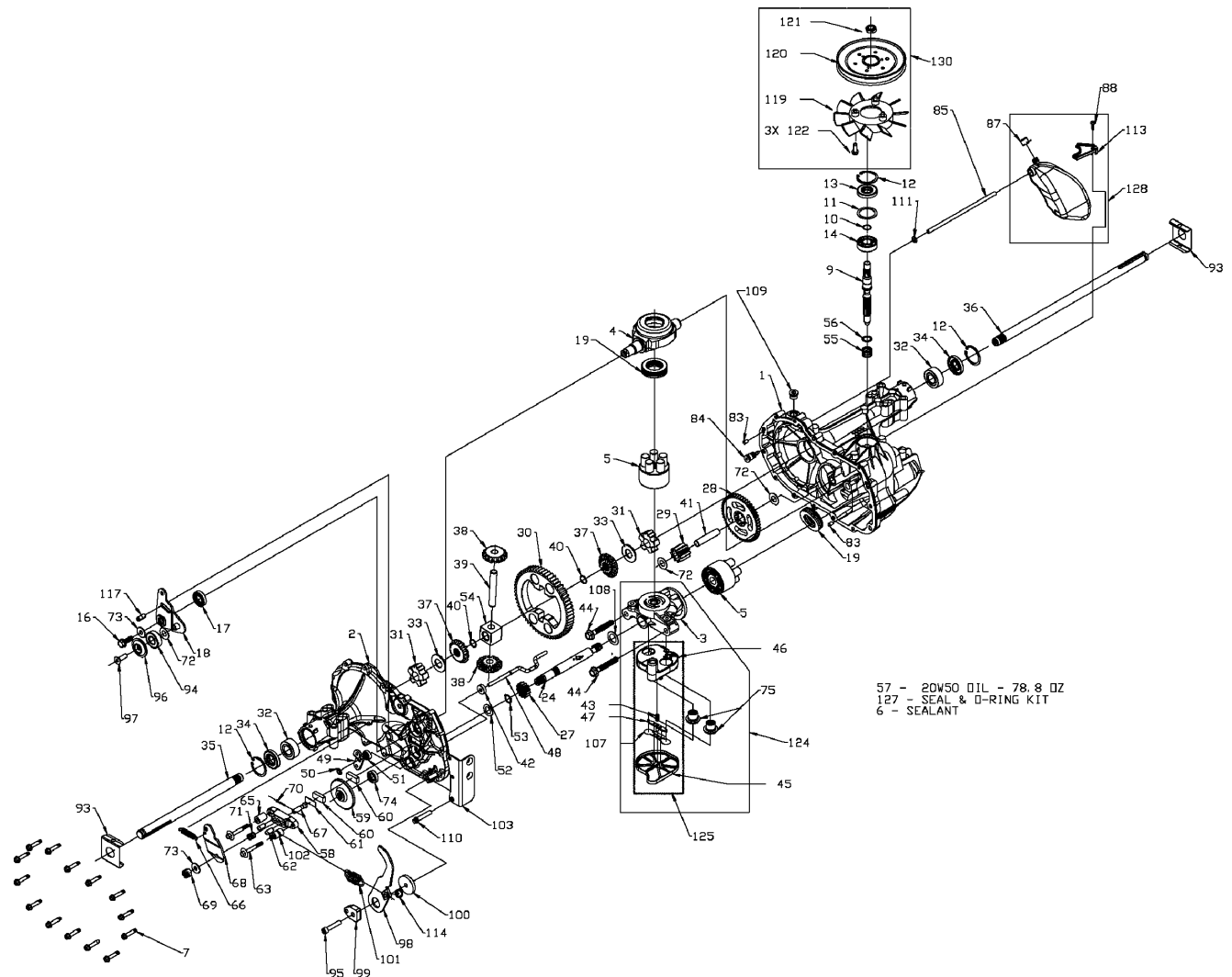
2690447 - Pacer

5900630 - Pacer

# Transaxle - SERVICE PARTS (226tsp0)

NOTE: Unless noted otherwise,  
use the standard hardware torque  
specification chart.

226TSP0



The above parts group applies to the following Mfg. Nos.:

- 1694895 - Pacer
- 2690447 - Pacer
- 5900630 - Pacer
- 5900766 - Pacer

## **Transaxle - SERVICE PARTS (226tsp0)**

---

<b>REF NO.</b>	<b>PART NO.</b>	<b>QTY.</b>	<b>DESCRIPTION</b>
6	5022905X1SM	10.5	SEALANT
9	5022905X2SM	1	SHAFT, INPUT
10	5022905X3SM	1	RING - RETAINING
11	5022905X4SM	1	SPACER
12	5022905X5SM	3	RING - RETAINING
13	5022905X16SM	1	SEAL, Lip, .67 x 1.58 x .276
14	5022905X6SM	1	BALL BEARING
32	5022905X7SM	2	OUTBOARD SLEEVE BEARING
34	5022905X17SM	2	LIP SEAL, Axle Seal
35	5022905X8SM	1	AXLE SHAFT - RH
36	5022905X9SM	1	AXLE SHAFT - LH
55	5022905X10SSM	1	SPRING - HELICAL COMPRESSION
56	5022905X11SM	1	WASHER
57	5022905X12	78.8	20W-50 OIL
101	5022967SM	1	HYDRO RETURN SPRING
119	5022905X13SM	1	FAN, 6", 10 BLADE
128	5022905X14SM	1	EXPANSION TANK KIT
130	5022905X15SM	1	FAN/PULLEY KIT

### **Footnotes**

---

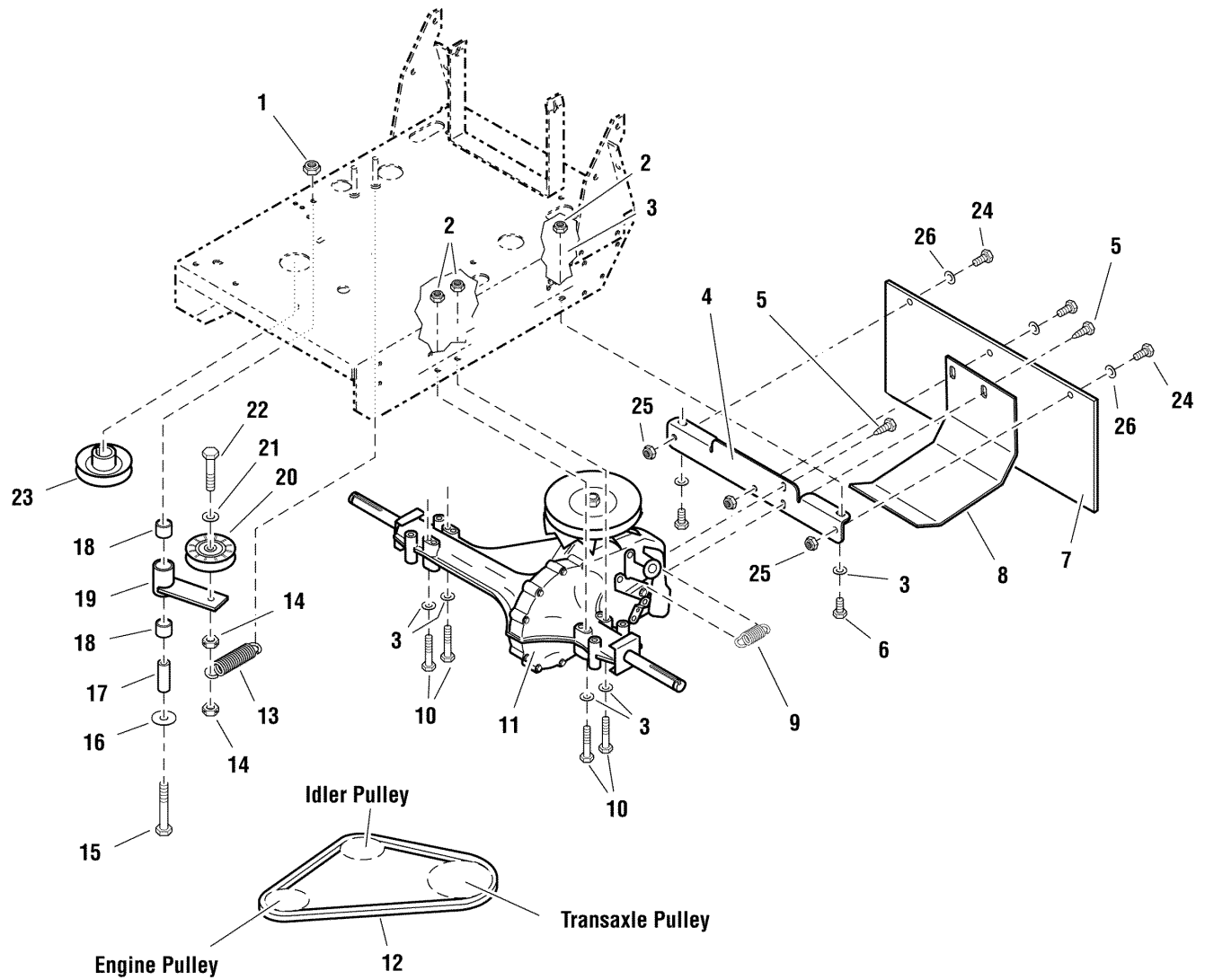
#### **The above parts group applies to the following Mfg. Nos.:**

1694895 - Pacer  
2690447 - Pacer  
5900630 - Pacer  
5900766 - Pacer

## Transaxle, Mount & Drive Idler Group (226trn0)

226trn0

NOTE: Unless noted otherwise,  
use the standard hardware torque  
specification chart.



The above parts group applies to the following Mfg. Nos.:

- 1694895 - Pacer
- 2690447 - Pacer
- 5900630 - Pacer
- 5900766 - Pacer

## **Transaxle, Mount & Drive Idler Group (226trn0)**

<b>REF NO.</b>	<b>PART NO.</b>	<b>QTY.</b>	<b>DESCRIPTION</b>
1	5025096SM	1	NUT, Hex Nylon Lock, 3/8-16 (34" Models Only)
2	5025057SM	6	NUT, Hex Nylon Lock, 5/16-18
3	5025155SM	12	WASHER, 5/16
4	5047582CSM	1	TRANSAXLE BRACE
5	5025059X6SM	2	CAPSCREW, Hex Head, Self-Tapping, 5/16-18 x 3/4
6	5025011X6SM	2	CAPSCREW, Hex Head, 5/16-18 x 3/4
7	5047736SM	1	RUBBER FLAP
8	5048312CSM	1	SKID PLATE
9	5022967SM	1	HYDRO RETURN SPRING
10	5025011X24SM	4	CAPSCREW, Hex Head, 5/16-18 x 3
11	5022905SM	1	HYDROSTATIC TRANSAXLE
12	5022968SM	1	BELT
13	5020807SM	1	SPRING, Extension (34" Models Only)
14	5025100SM	2	NUT, Hex, Side Lock, 3/8-16 (34" Models Only)
15	5025013X24SM	1	CAPSCREW, Hex Head, 3/8-16 x 3 (34" Models Only)
16	5025165SM	2	WASHER, Fender, 3/8 (34" Models Only)
17	5047716SM	1	SPACER (34" Models Only)
18	5020876BSM	2	BUSHING, Brass (34" Models Only)
19	5047717CSM	1	TRANSAXLE IDLER ARM (34" Models Only)
20	5043627SM	1	IDLER PULLEY ASSEMBLY (34" Models Only)
21	5025156SM	1	WASHER, 3/8 (34" Models Only)
22	5025013X16SM	1	CAPSCREW, Hex Head, 3/8-16 x 2 (34" Models Only)
23	5047626SM	1	TRANSAXLE DRIVE PULLEY
24	5025013X8SM	3	BOLT, 3/8 - 16 X 1
25	5025394SM	3	BOLT, 3/8 - 16, HEX NYLON FLANGE
26	5025156SM	3	WASHER, 3/8 SAE

### **Footnotes**

---

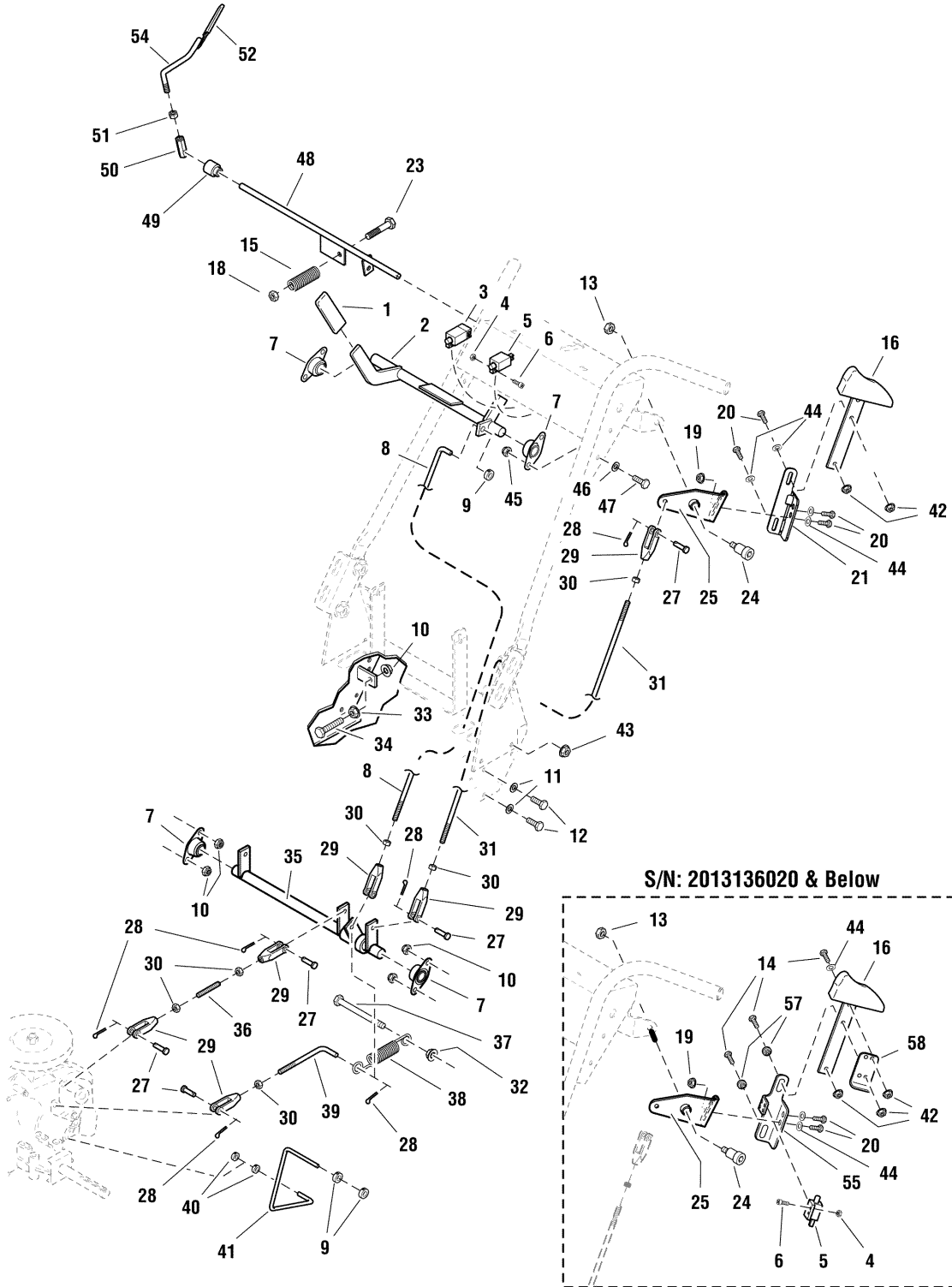
#### **The above parts group applies to the following Mfg. Nos.:**

1694895 - Pacer  
2690447 - Pacer  
5900630 - Pacer  
5900766 - Pacer

# Motion Control, Parking Brake & Operator Presence Group (17/32 Model)

5300480

NOTE: Unless noted otherwise,  
use the standard hardware torque  
specification chart.



The above parts group applies to the following Mfg. Nos.:  
5900766 - Pacer



## **Motion Control, Parking Brake & Operator Presence Group (17/32 Model)**

<b>REF NO.</b>	<b>PART NO.</b>	<b>QTY.</b>	<b>DESCRIPTION</b>
1	5025510	1	GRIP, FOAM, 1/4" X 1
2	5061278B	1	WELD, BRAKE CONTROL
3	5022438	1	SWITCH, Plunger, NO/NO (Parking brake)
4	5025029	6	NUT, #10-24 HEX (S/N: 2013136020 & Below use Qty.8)
5	5021769	1	SWITCH, Plunger, NC (S/N: 2013136020 & Below use Qty.3) (Operator Presence)
6	5025179X4	6	SCREW, #10-24 X 1/2" ROUND PHILLIPS (S/N: 2013136020 & Below use Qty.8)
7	5021098	4	BEARING, BRONZE FLANGE, 3/4
8	5061495	1	ROD, PARKING BRAKE LINKAGE
9	5020047	3	COLLAR, 5/16" SET
10	5025392	5	NUT, 5/16-18 HEX NYLOCK FLANGE
11	5025155	4	WASHER, 5/16" SAE
12	5025011X6	8	BOLT, 5/16-18 X 3/4" GD5
13	5025046	2	NUT, 3/8-16 HEX TOP LOCK
14	5025010X8	6	BOLT, 1/4-20 X 1", GD5 (S/N: 2013136020 & Below)
15	5020637	1	SPRING, COMPRESSION (S/N: 2013136021 & Above)
16	5061691	1	HANDLE, RUBBER HYDROCUT - LH
17	5061702	1	HANDLE, RUBBER HYDROCUT - RH (Not Shown)
18	5025391	1	NUT, 1/4-20 HEX NYLOCK FLANGE (S/N: 2013136021 & Above)
19	5025126	4	NUT, 1/4-20 HEX SERR. FLANGE
20	5025010X6	8	BOLT, 1/4-20 X 3/4" GD5 YZ
21	5404461A	1	MOUNT, MOTION CONTROLS, LH - BLACK (S/N: 2013136021 & Above)
22	5404462A	1	MOUNT, MOTION CONTROLS, RH - BLACK (S/N: 2013136021 & Above) (Not Shown)
23	5025010X24	1	BOLT, 1/4-20 X 3, GD5 (S/N: 2013136021 & Above)
24	5025223	2	BOLT, 3/8-16 X 1.0", 1/2" SHOULDER
25	5061683B	1	WELD, ARM CONTROL, LH
26	5061685B	1	WELD, ARM CONTROL, RH (Not Shown)
27	5025213X8	7	PIN, CLEVIS, 5/16" X 1
28	5025201X6	7	PIN, COTTER, 3/32" X 3/4
29	5020979	10	CLEVIS, 5/16-24, PLASTIC
30	5025033	8	NUT, 5/16-24 HEX
31	5047642	2	ROD, THUMB CONTROL LINKAGE
32	5025128	1	NUT, 3/8-16 HEX SERRATED FLANGE
33	5025139	1	NUT, 5/16-18 HEX SERRATED FLANGE (LARGE)
34	5023157	1	BOLT, 5/16-18 X 1 1/2" FLANGE
35	5047697B	1	WELD, CONTROL SHAFT
36	5047740	1	LINK, STUD
37	5025013X32	1	BOLT, 3/8-16 X 4" GD5 YZ
38	5049352	1	SPRING, EXT, 3.875 X .70 LOOP
39	5048328	1	LINK, PARKING BRAKE LOWER
40	5022481	2	COLLAR, 1/4" SET
41	5047732	1	LEVER, DUMP VALVE
42	5025391	4	NUT, 1/4-20 HEX NYLOCK FLANGE
43	5025394	1	NUT, 3/8-16 HEX NYLOCK FLANGE
44	5025154	6	WASHER, 1/4" SAE

### **Footnotes**

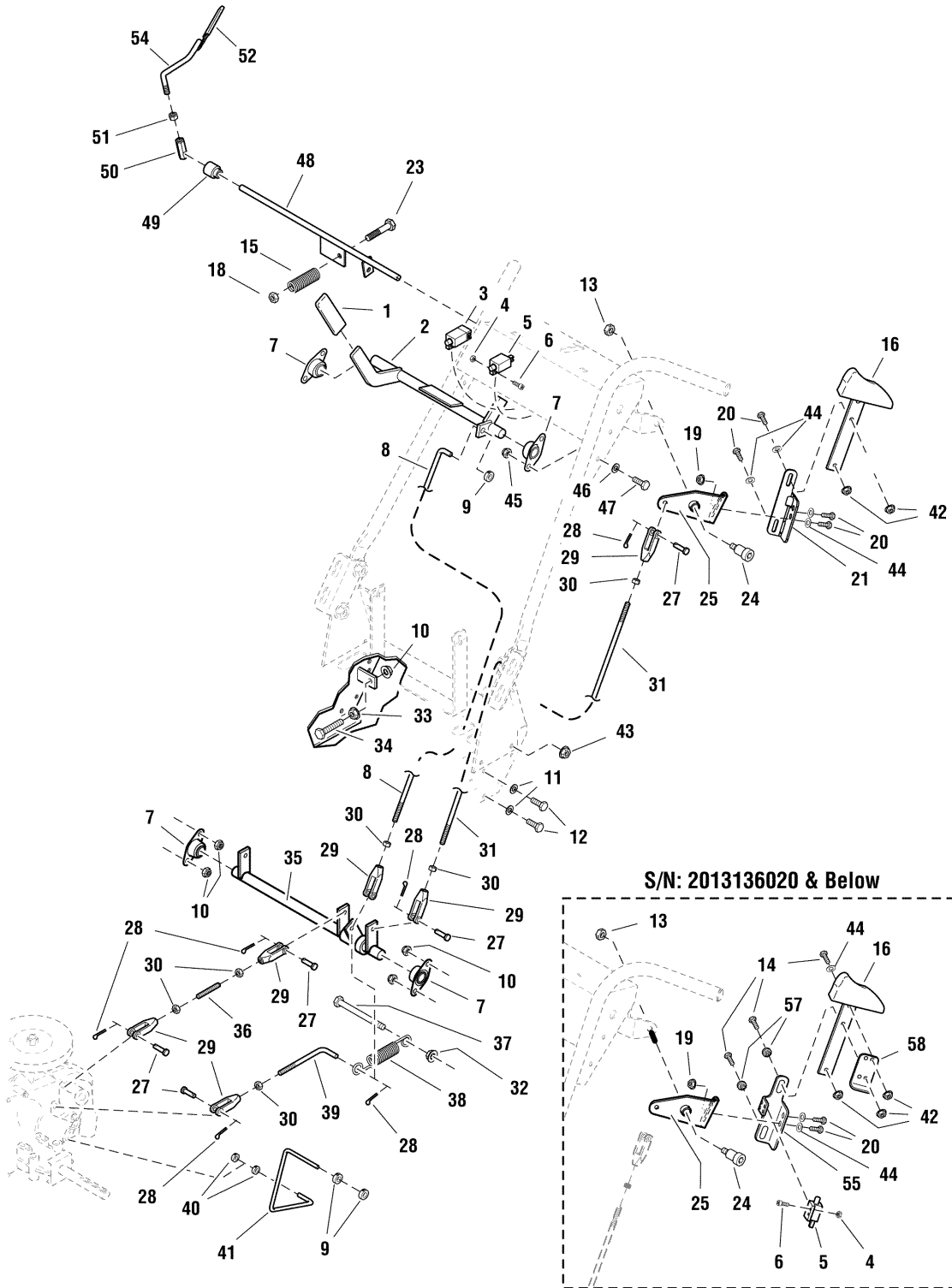
**The above parts group applies to the following Mfg. Nos.:**

5900766 - Pacer

# Motion Control, Parking Brake & Operator Presence Group (17/32 Model)

5300480

NOTE: Unless noted otherwise,  
use the standard hardware torque  
specification chart.



The above parts group applies to the following Mfg. Nos.:  
5900766 - Pacer

## **Motion Control, Parking Brake & Operator Presence Group (17/32 Model)**

<b>REF NO.</b>	<b>PART NO.</b>	<b>QTY.</b>	<b>DESCRIPTION</b>
45	5025394	4	NUT, 3/8"-16 HEX NYLOCK FLANGE
46	5025156	4	WASHER, 3/8" SAE
47	5025013X6	4	BOLT, 3/8-16 X 3/4" GD5
48	5101679	1	ROD, OPC SWITCH, PACER (S/N: 2013136021 & Above)
49	5045943	2	SPACER, SHOULDER (S/N: 2013136021 & Above)
50	5043417	2	ADJUSTER, LINKAGE (S/N: 2013136021 & Above)
51	5025034	2	NUT, 3/8-16 HEX (S/N: 2013136021 & Above)
52	5021490	2	GRIP, VINYL, 1/2 X 4 (S/N: 2013136021 & Above)
53	5449175B	1	WELD, OPERATOR PRESENCE, LH - RED (S/N: 2013136021 & Above)
54	5449176B	1	WELD, OPERATOR PRESENCE, RH - RED (S/N: 2013136021 & Above)
55	5061689	1	MOUNT, MOTION CONTROLS, LH (S/N: 2013136020 & Below)
56	5061692	1	MOUNT, MOTION CONTROLS, RH (S/N: 2013136020 & Below) (Not Shown)
57	5061693	4	SPACER, SLIDE (S/N: 2013136020 & Below)
58	5061713B	2	ACTUATOR, SWITCH (S/N: 2013136020 & Below)

### **Footnotes**

---

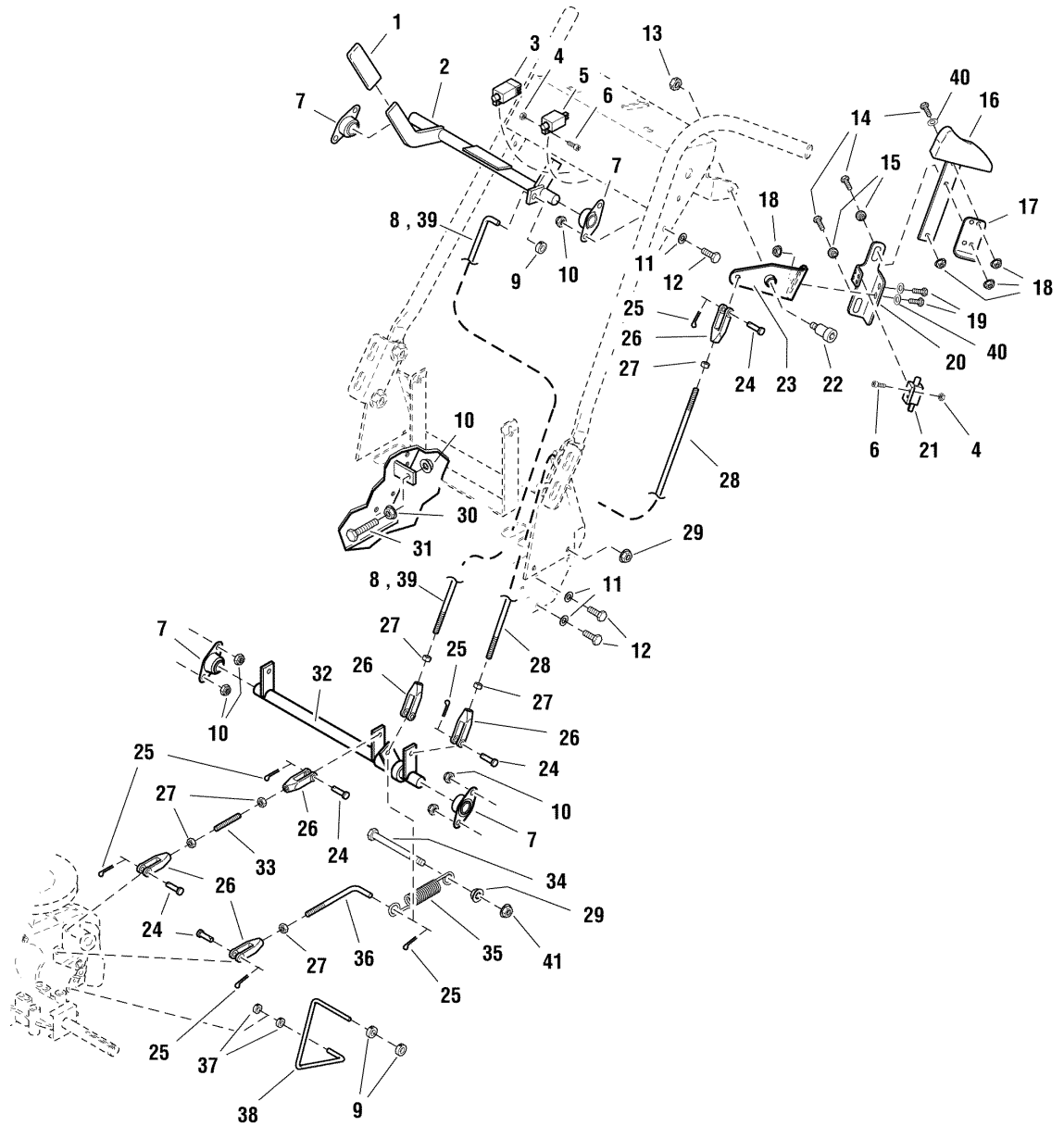
**The above parts group applies to the following Mfg. Nos.:**

5900766 - Pacer

# Motion Control, Parking Brake & Operator Presence Group (226mcge0)

226mcge0

NOTE: Unless noted otherwise,  
use the standard hardware torque  
specification chart.



The above parts group applies to the following Mfg. Nos.:

1694895 - Pacer

2690447 - Pacer

5900630 - Pacer

## Motion Control, Parking Brake & Operator Presence Group (226mcge0)

REF NO.	PART NO.	QTY.	DESCRIPTION
1	5025510SM	1	FOAM GRIP
2	5061278CSM	1	BRAKE HANDLE SHAFT ASSEMBLY
3	5022438SM	1	SWITCH, Plunger, NO/NO
4	5025029SM	8	NUT, #10-24 Hex
5	5021769SM	1	SWITCH, Plunger, NC
6	5025179X4SM	8	SCREW, #10-24 x 1/2
7	5021098SM	4	BEARING, Flange
8	5061495SM	1	BRAKE ROD (S/N: 2012825357 & Below)
9	5020047SM	3	COLLAR, 5/16" Set
10	5025057SM	8	NUT, 5/16-18 Hex Nylon Lock
11	5025155SM	8	WASHER, 5/16" SAE
12	5025011X6SM	8	BOLT, 5/16-18 x 3/4
13	5025100SM	2	NUT, 3/8-16 Hex Side Lock
14	5025010X8SM	6	BOLT, 1/4-20 x 1
15	5061693SM	4	SLIDE SPACER
16	5061691SM	1	CONTROL HANDLE, LH
16	5061702SM	1	CONTROL HANDLE, RH
17	5061713CSM	2	SWITCH ACTUATOR
18	5025126SM	10	NUT, 1/4-20 Hex Serrated Flange
19	5025010X6SM	4	BOLT, 1/4-20 x 3/4
20	5061689SM	1	HANDLE MOUNT, LH
20	5061692SM	1	HANDLE MOUNT, RH
21	5021769SM	2	SWITCH, Plunger, NC
22	5025223SM	2	SHOULDER BOLT, 1/2 x 1
23	5061683CSM	1	PIVOT CONTROL, LH
23	5061685CSM	1	PIVOT CONTROL, RH
24	5025213X8SM	7	CLEVIS PIN, 5/16 x 1
25	5025201X6SM	8	COTTER PIN, 3/32" x 3/4"
26	5020979SM	8	CLEVIS, 5/16-24, Plastic
27	5025033SM	8	NUT, 5/16-24 Hex
28	5047642SM	2	THUMB CONTROL ROD
29	5025128SM	2	NUT, 3/8-16 Hex Serrated Flange
30	1931277SM	2	NUT, 5/16-18 Hex Small Serrated Flange
31	5025055X14SM	1	BOLT, 5/16-18 x 1-3/4 TFL
32	5047697CSM	1	CONTROL SHAFT ASSEMBLY
33	5047740SM	1	LINK STUD
34	5025013X32SM	1	BOLT, 3/8-16 x 4
35	5049352SM	1	SPRING, Extension
36	5048328SM	1	BRAKE LINKAGE ROD
37	5022481SM	2	COLLAR, Set, 1/4"
38	5047732SM	1	DUMP VALVE ROD
39	5101513CSM	1	ROD, PARKING BRAKE LINKAGE (S/N: 2012825358 & Above)
40	5025154SM	1	WASHER, 1/4 SAE
41	5025394SM	1	NUT, 3/8-16 HEX NYLOCK FLANGE

### Footnotes

The above parts group applies to the following Mfg. Nos.:

1694895 - Pacer

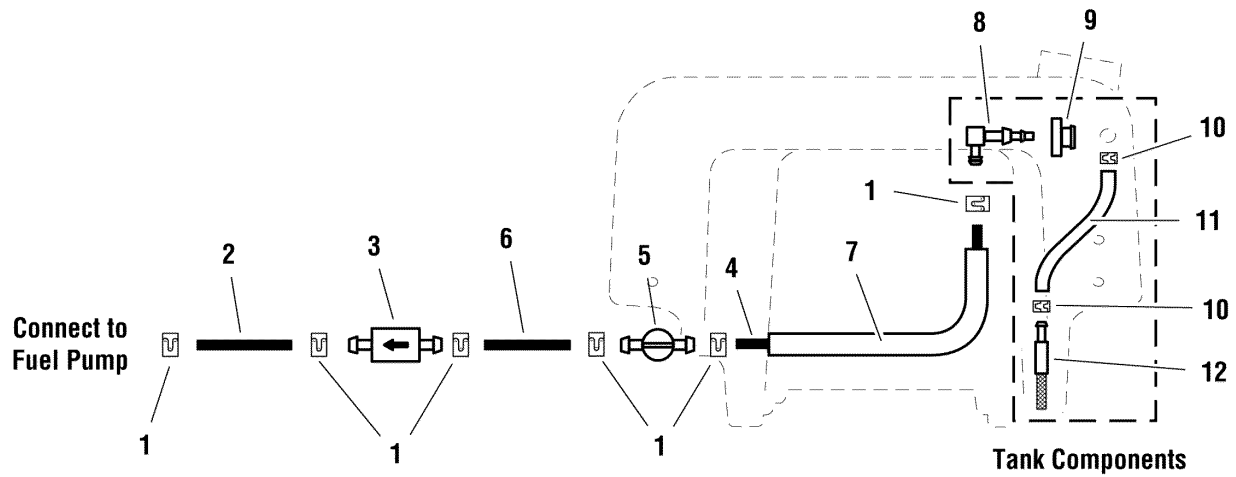
2690447 - Pacer

5900630 - Pacer

## Fuel Supply Hose & Tank Replacement Parts Group (226fsh0)

226fsh0

NOTE: Unless noted otherwise,  
use the standard hardware torque  
specification chart.



The above parts group applies to the following Mfg. Nos.:

- 1694895 - Pacer
- 2690447 - Pacer
- 5900630 - Pacer
- 5900766 - Pacer

## **Fuel Supply Hose & Tank Replacement Parts Group (226fsh0)**

---

<b>REF NO.</b>	<b>PART NO.</b>	<b>QTY.</b>	<b>DESCRIPTION</b>
1	5020835SM	6	CLAMP, Hose
2	5050831X5SM	1	HOSE, 5" (supplied with engine)
3	5021178X3SM	1	FUEL FILTER
4	5050831X4SM	1	HOSE, 4"
5	5021235SM	1	VALVE, Fuel Shut-Off
6	5050831X15SM	1	HOSE, 15"
7	5050833X14	1	WIRE LOOM, 1/2 ID 14" LONG
8	5023061SM	1	ELBOW FITTING
9	1654930SM	1	GROMMET
10	5020835SM	2	HOSE CLAMP
11	5050925X20SM	1	HOSE, 20"
12	5023067SM	1	SCREEN FITTING

### **Footnotes**

---

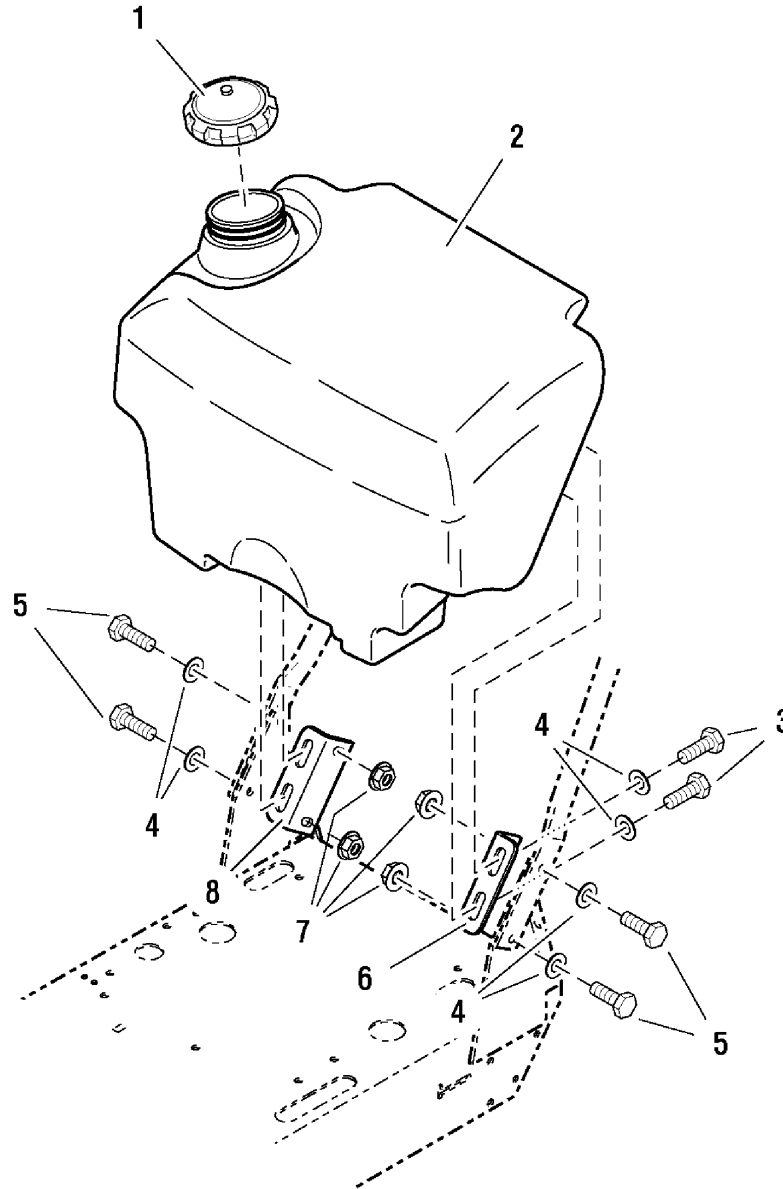
#### **The above parts group applies to the following Mfg. Nos.:**

1694895 - Pacer  
2690447 - Pacer  
5900630 - Pacer  
5900766 - Pacer

## Fuel Tank & Mount Group (S/N: 2012825357 & Below) (226tnk0)

226tnk0

NOTE: Unless noted otherwise,  
use the standard hardware torque  
specification chart.



The above parts group applies to the following Mfg. Nos.:

1694895 - Pacer

2690447 - Pacer

5900630 - Pacer



**Fuel Tank & Mount Group (S/N: 2012825357 & Below) (226tnk0)**

---

REF NO.	PART NO.	QTY.	DESCRIPTION
1	5022158SM	1	FUEL TANK CAP
2	5048149SM	1	FUEL TANK
3	5025013X6SM	4	CAPSCREW, Hex Head, 3/8-16 x 3/4
4	5025156SM	8	WASHER, 3/8
5	5025013X10SM	4	CAPSCREW, Hex Head, 3/8-16 x 1-1/4
6	5048342CSM	1	FUEL TANK MOUNT - LH
7	5025128SM	4	NUT, Hex Serrated Flange, 3/8-16
8	5048343CSM	1	FUEL TANK MOUNT - RH

**Footnotes**

---

**The above parts group applies to the following Mfg. Nos.:**

1694895 - Pacer

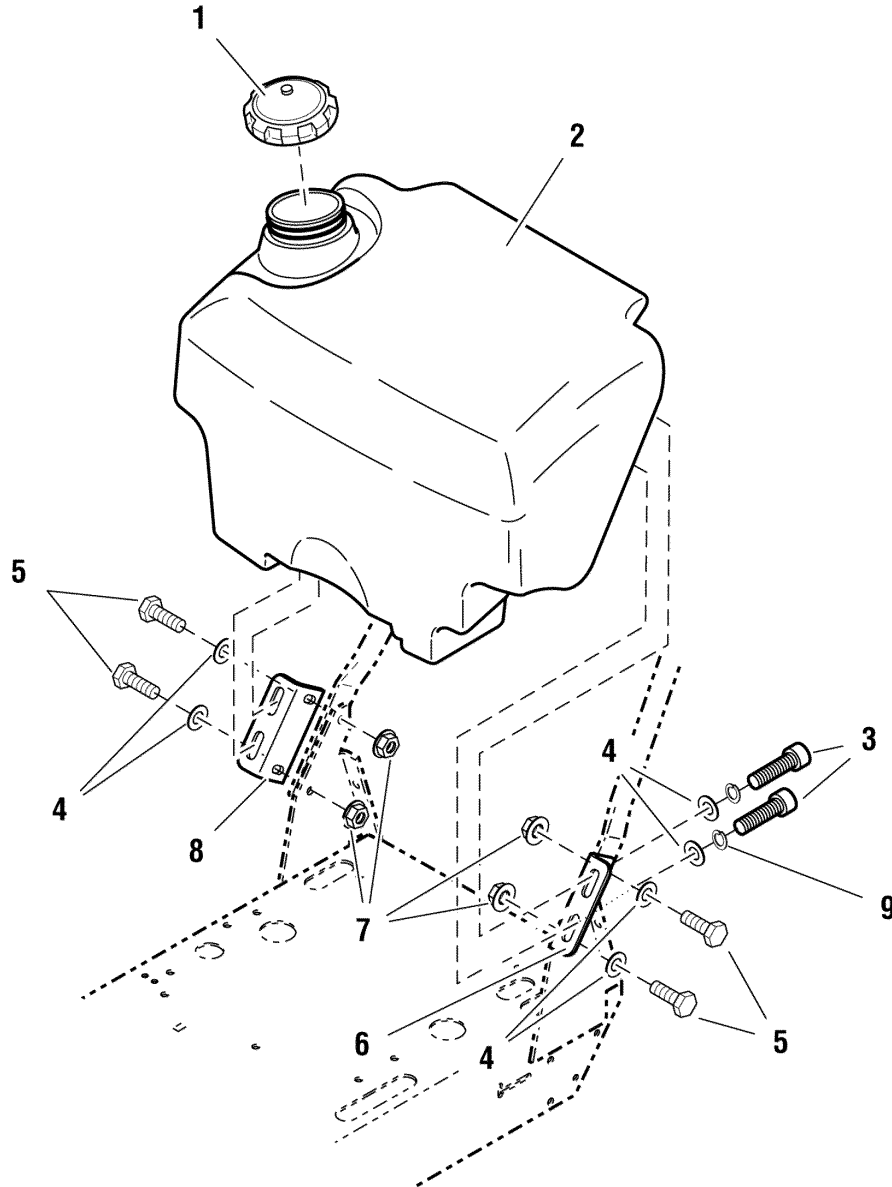
2690447 - Pacer

5900630 - Pacer

## Fuel Tank & Mount Group (S/N: 2012825358 & Above) (226tnk1)

226tnk1

NOTE: Unless noted otherwise,  
use the standard hardware torque  
specification chart.



The above parts group applies to the following Mfg. Nos.:

5900630 - Pacer

5900766 - Pacer

**Fuel Tank & Mount Group (S/N: 2012825358 & Above) (226tnk1)**

---

<b>REF NO.</b>	<b>PART NO.</b>	<b>QTY.</b>	<b>DESCRIPTION</b>
1	5022158SM	1	FUEL TANK CAP
2	5048149SM	1	FUEL TANK
3	5025075X6SM	4	BOLT, 3/8-16 X 3/4", ALLEN BUTTON
4	5025156SM	8	WASHER, 3/8
5	5025013X10SM	4	CAPSCREW, Hex Head, 3/8-16 x 1-1/4
6	5404028CSM	1	FUEL TANK MOUNT - LH
7	5025394SM	4	NUT, 3/8-16 HEX NYLOCK FLANGE
8	5404027CSM	1	FUEL TANK MOUNT - RH
9	5025170SM	4	WASHER, 5/16 LOCK YZ

**Footnotes**

---

**The above parts group applies to the following Mfg. Nos.:**

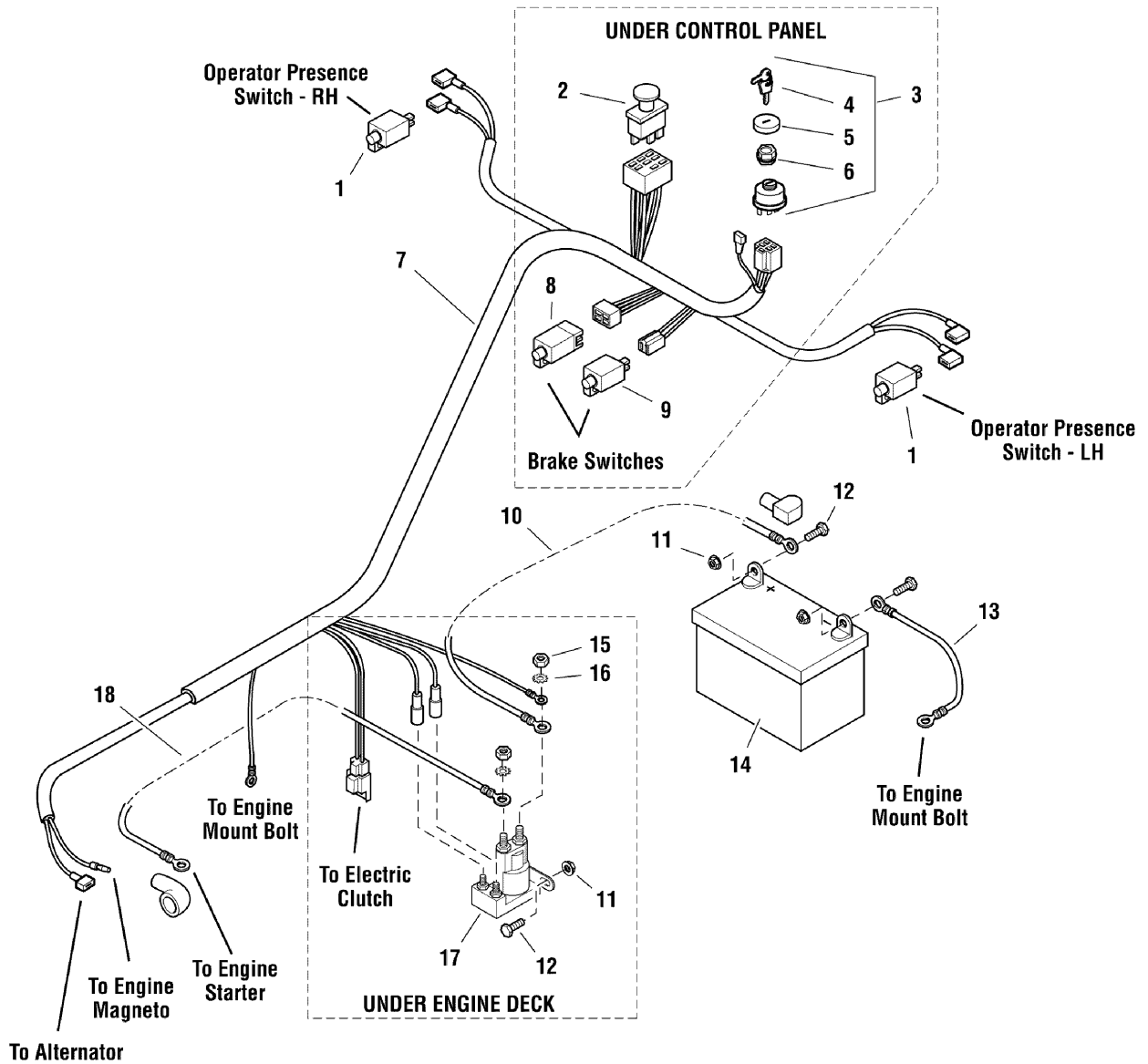
5900630 - Pacer

5900766 - Pacer

# Electrical Group (S/N: 2013136020 & Below) (226egwe0)

226egwe0

NOTE: Unless noted otherwise,  
use the standard hardware torque  
specification chart.



The above parts group applies to the following Mfg. Nos.:

- 1694895 - Pacer
- 2690447 - Pacer
- 5900630 - Pacer

**Electrical Group (S/N: 2013136020 & Below) (226egwe0)**

---

<b>REF NO.</b>	<b>PART NO.</b>	<b>QTY.</b>	<b>DESCRIPTION</b>
1	5021769SM	2	SWITCH, NC
2	1722887SM	1	SWITCH, PTO
3	1686734SM	1	SWITCH, Ignition, Complete
4	1717163SM	1	KEY, Ignition, Molded Set
5	1704346SM	1	COVER
6	5022791SM	1	PLASTIC NUT
7	5401037SM	1	WIRE HARNESS
8	5022438SM	1	SWITCH, Plunger, NO/NO
9	5021769SM	1	SWITCH, Plunger, NC
10	5021405SM	1	POSITIVE (+) BATTERY CABLE, 22"
11	5025126SM	4	NUT, 1/4-20 Hex Serrated Flange
12	5025010X6SM	4	BOLT, 1/4-20 x 3/4
13	5021406SM	1	NEGATIVE (-) BATTERY CABLE, 22"
14	-	1	BATTERY, Lawn & Garden, 12V (BCIU1, 340 CCA)
15	2820438SM	2	NUT, Hex Jam, 5/16-24
16	5023217SM	2	WASHER, Light Lock, 5/16
17	1686981SM	1	SOLENOID
18	5021542SM	1	POSITIVE (+) BATTERY CABLE, 30"

**Footnotes**

---

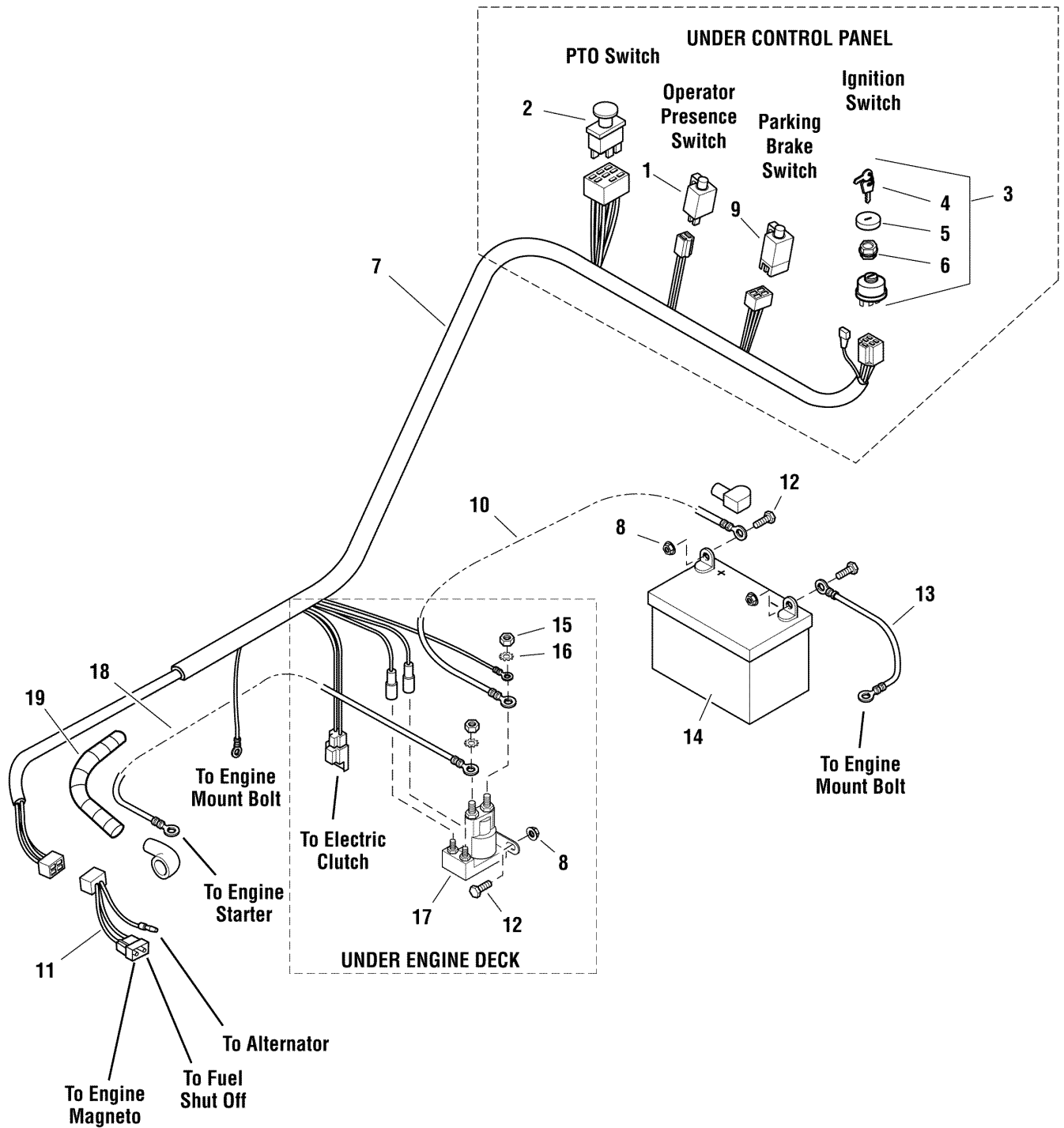
**The above parts group applies to the following Mfg. Nos.:**

1694895 - Pacer  
2690447 - Pacer  
5900630 - Pacer

# Electrical Group (S/N: 2013136021 & Above) (226egwe1)

226egwe1

NOTE: Unless noted otherwise,  
use the standard hardware torque  
specification chart.



The above parts group applies to the following Mfg. Nos.:

5900766 - Pacer

**Electrical Group (S/N: 2013136021 & Above) (226egwe1)**

---

<b>REF NO.</b>	<b>PART NO.</b>	<b>QTY.</b>	<b>DESCRIPTION</b>
1	5021769	1	SWITCH, PLUNGER NC (OPERATOR PRESENCE)
2	5022180	1	SWITCH, BLADE ENGAGEMENT (PTO SWITCH)
3	5020927	1	SWITCH, IGNITION 6-POST (IGNITION SWITCH)
4	5022789	1	KEY, IGNITION, MOLDED SET (SV)
5	5022790	1	COVER, PLASTIC SNAP ON (SV)
6	5022791	1	NUT, PLASTIC (SV)
7	5404464	1	WIRE HARNESS, MAIN HYDROCUT/PACER
8	5025126	4	NUT, 1/4-20 HEX SERRATED FLANGE
9	5022095	1	SWITCH, PLUNGER, NO/NC (PARKING BRAKE)
10	5021405	1	BATTERY CABLE, POSITIVE, 22" (BATTERY TO SOLENOID)
11	5404471	1	WIRE HARNESS, PACER 1732, JUMPER
12	5025010X6	4	BOLT, 1/4-20 X 3/4
13	5021406	1	BATTERY CABLE, NEGATIVE, 22"
14	-	1	BATTERY, WET ( BCIU1, 340 CCA)
15	5023216	2	NUT, HEX JAM 5/16-24 (SV)
16	5023217	2	WASHER, LIGHT LOCK, 5/16 (SV)
17	1724815	1	SOLENOID-4 POLE 12 VOLT DC (TROMBETTA)
18	5048729	1	BATTERY CABLE, POSITIVE, 35"
19	5050927X23	1	WIRE LOOM, 3/8" ID X 23 IN LONG

**Footnotes**

---

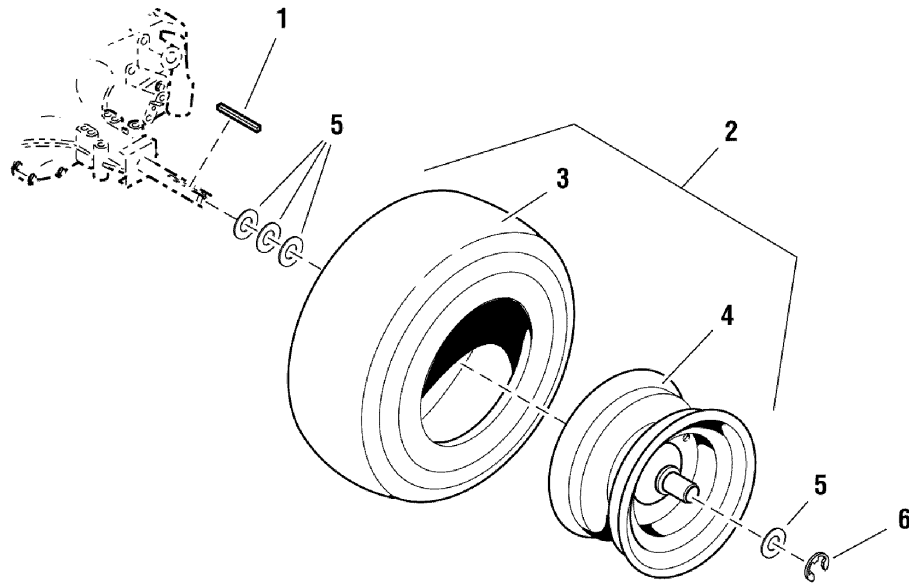
**The above parts group applies to the following Mfg. Nos.:**

5900766 - Pacer

## Wheel & Tire Group (226wh10)

NOTE: Unless noted otherwise,  
use the standard hardware torque  
specification chart.

226wh10



---

**The above parts group applies to the following Mfg. Nos.:**

1694895 - Pacer  
2690447 - Pacer  
5900630 - Pacer  
5900766 - Pacer



## **Wheel & Tire Group (226whl0)**

---

<b>REF NO.</b>	<b>PART NO.</b>	<b>QTY.</b>	<b>DESCRIPTION</b>
1	5048409SM	2	KEY, 3/16
2	5022913SM	2	WHEEL & TIRE ASSEMBLY, 16 x 6.5 x 8, Complete (Includes Ref. No. 3 & 4)
3	5022913X2SM	2	TIRE, 16. x 6.5 x 8
4	5022913X1SM	2	WHEEL ASSEMBLY, 8 x 5.38
5	5025520X3SM	8	SHIM
6	5020863SM	2	C-CLIP

### **Footnotes**

---

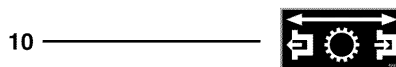
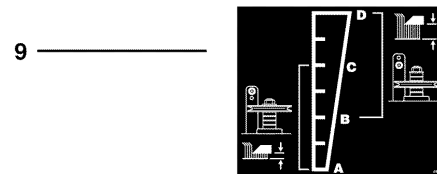
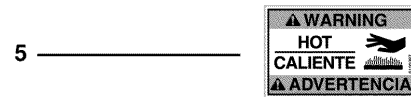
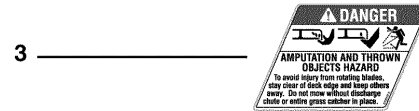
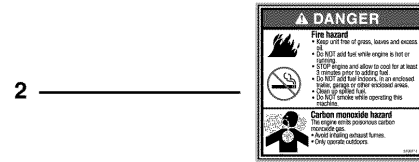
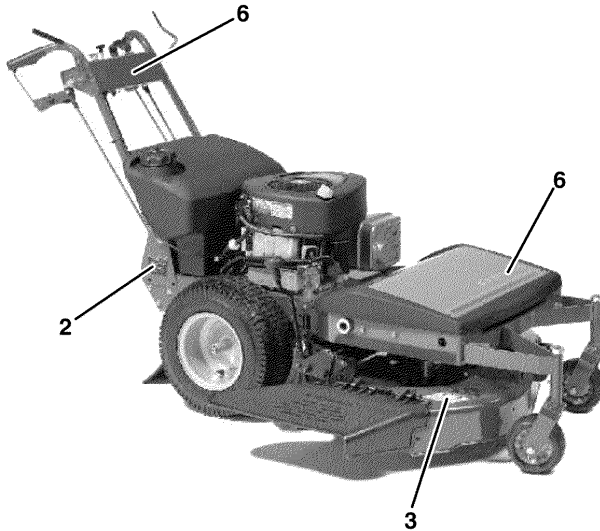
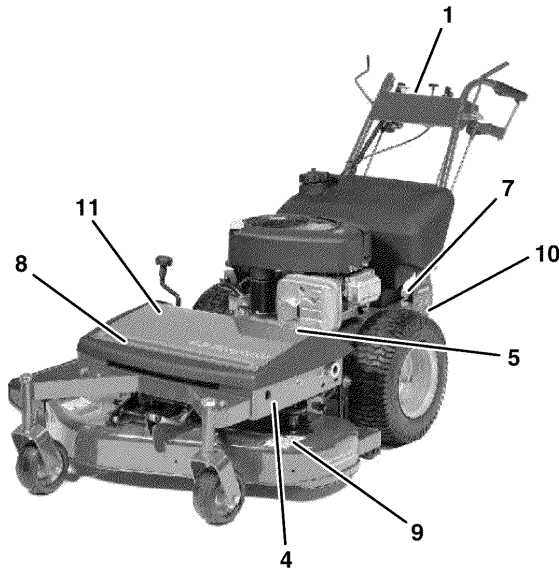
#### **The above parts group applies to the following Mfg. Nos.:**

1694895 - Pacer  
2690447 - Pacer  
5900630 - Pacer  
5900766 - Pacer

## Decal Group (17/32 Model)

NOTE: Unless noted otherwise, use the standard hardware torque specification chart.

5301447



The above parts group applies to the following Mfg. Nos.:  
5900766 - Pacer

### **Decal Group (17/32 Model)**

---

<b>REF NO.</b>	<b>PART NO.</b>	<b>QTY.</b>	<b>DESCRIPTION</b>
1	5100066SM	1	DECAL, CONTROL PANEL
2	5100711SM	1	DECAL, DANGER
3	5100137SM	1	DECAL, DANGER, MOWER DISCHARGE
4	5100136SM	1	DECAL, DANGER, MOWER
5	5100387SM	1	DECAL, WARNING, HOT
6	1722551SM	2	DECAL-SIMPLICITY SILVER & BLUE W/ICON
7	5047778SM	1	DECAL-CUT HEIGHT ADJUST HYDRO CUT
8	5048482SM	1	DECAL, STRIPE, SILVER & BLUE
9	5049318SM	1	DECAL, HEIGHT OF CUT
10	5049320SM	1	DECAL, HYDRO RELEASE
11	5101596SM	1	DECAL, PACER 1732
12	*	1	MODEL/SERIAL TAG
13	*	1	DECAL, OPEI

### **Footnotes**

---

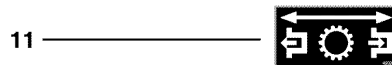
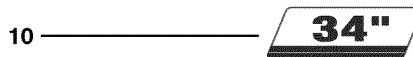
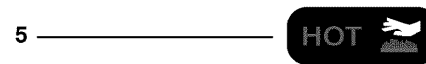
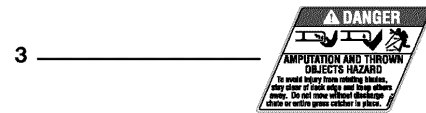
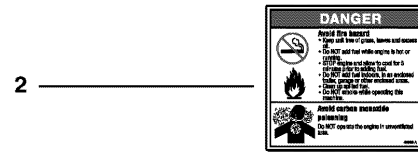
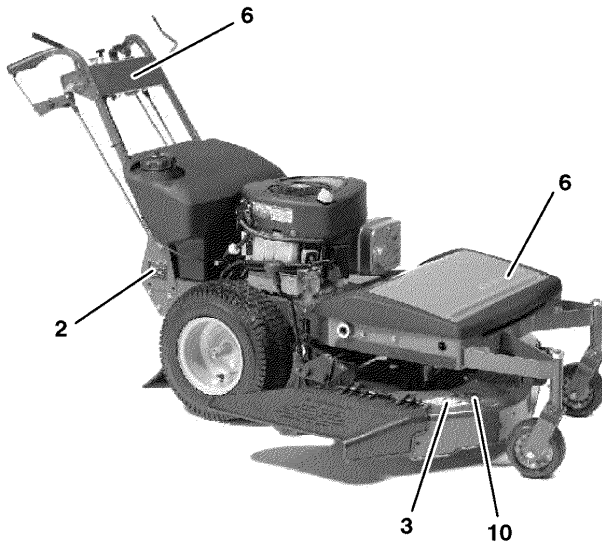
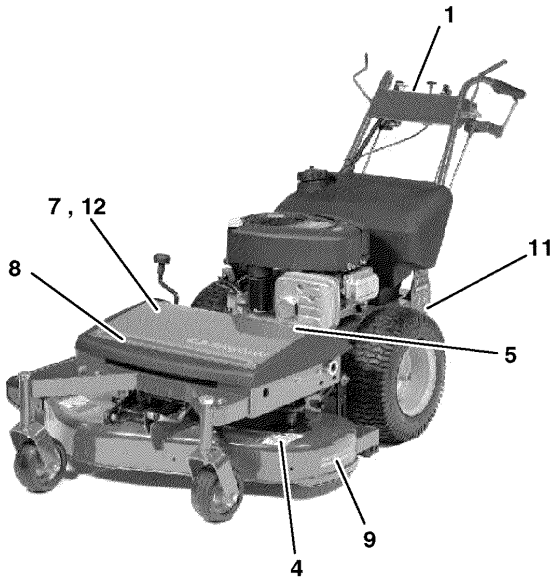
**The above parts group applies to the following Mfg. Nos.:**

5900766 - Pacer

## Decal Group (226dc10)

NOTE: Unless noted otherwise, use the standard hardware torque specification chart.

226dc10



The above parts group applies to the following Mfg. Nos.:

1694895 - Pacer

2690447 - Pacer

5900630 - Pacer

## **Decal Group (226dcl0)**

---

<b>REF NO.</b>	<b>PART NO.</b>	<b>QTY.</b>	<b>DESCRIPTION</b>
1	5100066SM	1	DECAL, Control Panel
2	5049658SM	1	DECAL, Danger
3	5100137SM	1	DECAL, Danger, Mower Discharge
4	5100136SM	1	DECAL, Danger, Mower
5	1704473SM	1	DECAL, Hot
6	1722551SM	2	DECAL, Simplicity, Silver & Blue, W/Icon
7	5061480SM	1	DECAL, Pacer 1534 (15HP Models Only)
8	5048482SM	1	DECAL, Stripe, Blue & Silver
9	1722771SM	1	DECAL, Free Floating
10	1722786SM	1	DECAL, 34"
11	5049320SM	1	DECAL, HYDRO RELEASE
12	5100693SM	1	DECAL, PACER 1734 (17HP Models Only)
13	*	1	MODEL/SERIAL TAG
14	*	1	DECAL, OPEI

### **Footnotes**

Note\* Not a serviceable part.

---

### **The above parts group applies to the following Mfg. Nos.:**

1694895 - Pacer

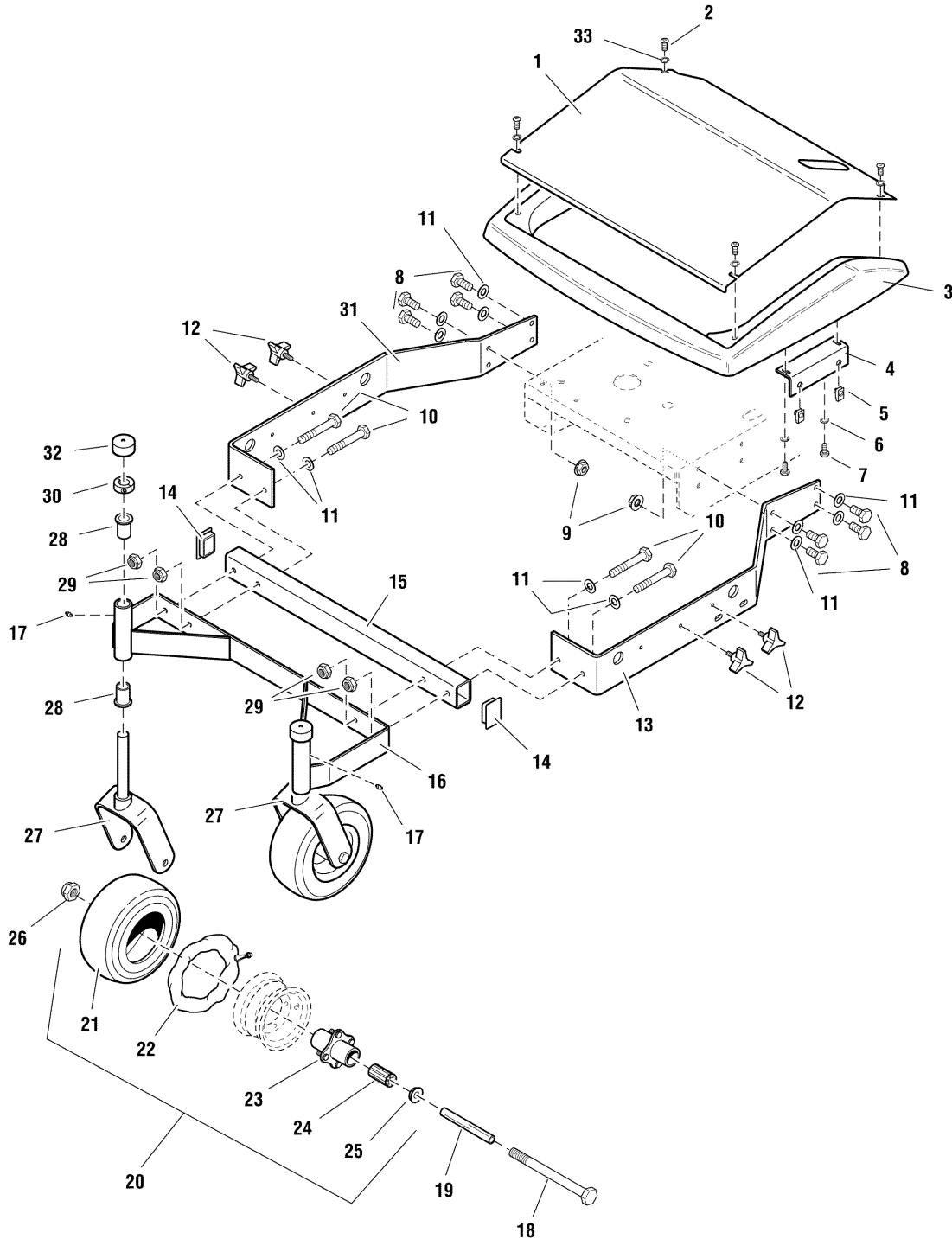
2690447 - Pacer

5900630 - Pacer

## 32" Mower Deck - Frame, Caster & Shield

NOTE: Unless noted otherwise,  
use the standard hardware torque  
specification chart.

5301448



The above parts group applies to the following Mfg. Nos.:

5900766 - Pacer

## 32" Mower Deck - Frame, Caster & Shield

REF NO.	PART NO.	QTY.	DESCRIPTION
1	5048181CSM	1	GUARD, INSERT (BRIGGS)
2	5025299X4SM	4	SCREW, 1/4-20 X 1/2 ALLEN BH
3	5048150SM	1	GUARD, MOWER DECK
4	5048353CSM	2	BRACKET, GUARD
5	5022308SM	4	CLIP, BODY, 5/16-18 FOR 7 GA.
6	5025169SM	4	WASHER, 1/4 LOCK
7	5025010X6SM	4	BOLT, 1/4-20 X 3/4 GD5 YZ
8	5025013X8SM	8	BOLT, 3/8-16 X 1 GD5 YZ
9	5025128SM	8	NUT, 3/8-16 HEX SERRATED FLANGE
10	5025013X20SM	4	BOLT, 3/8-16 X 2-1/2 GD5 YZ
11	5025156SM	12	WASHER, 3/8 SAE
12	5022319SM	4	KNOB, PLASTIC, 5/16-18 X 3/4
13	5047648CSM	1	RAIL, DECK FRAME - LEFT
14	5022098SM	2	CAP, 1-1/2 X 2 X 11GA, PLASTIC
15	5048194CSM	1	TUBE, CROSS
16	5047677CSM	1	WELD, CASTER MOUNT
17	5020095SM	4	GREASE FITTING, 1/4-28 STRAIGHT
18	5025017X44SM	2	BOLT, 1/2-13 X 5-1/2 GD5 YZ
19	5041657SM	2	AXLE, CASTER WHEEL
20	5021181SSM	2	TIRE ASSM, 9 X 3.5 X 4, SILVER (Includes Ref No. 21-25)
21	5021181X1SM	2	TIRE, FRONT, 9 X 3.5 X 4, TIRE ONLY
22	5021181X2SM	2	9X350-4 TUBE ONLY
23	5021181SX3SM	2	4 BOLT HUB W/ BEARING - SILVER (Includes Ref No. 24 & 25)
24	5021182SM	2	BEARING, ROLLER (1 per Tire)
25	5021043SM	4	RETAINER, BEARING (2 per Tire)
26	5025056SM	2	NUT, 1/2-13 HEX NYLON LOCK
27	5048172CSM	2	WELD, CASTER YOKE
28	5020823SM	4	BUSHING, FLANGE, 3/4 X 1+69878956
29	5025394SM	4	NUT, 3/8-16 HEX NYLOCK FLANGE
30	5010114SM	2	COLLAR, 3/4 SPLIT
31	5047649CSM	1	RAIL, DECK FRAME - RIGHT
32	5023274SM	2	CAP,VINYL, 1.375 X 1
33	5025154SM	4	WASHER, 1/4 SAE

### Footnotes

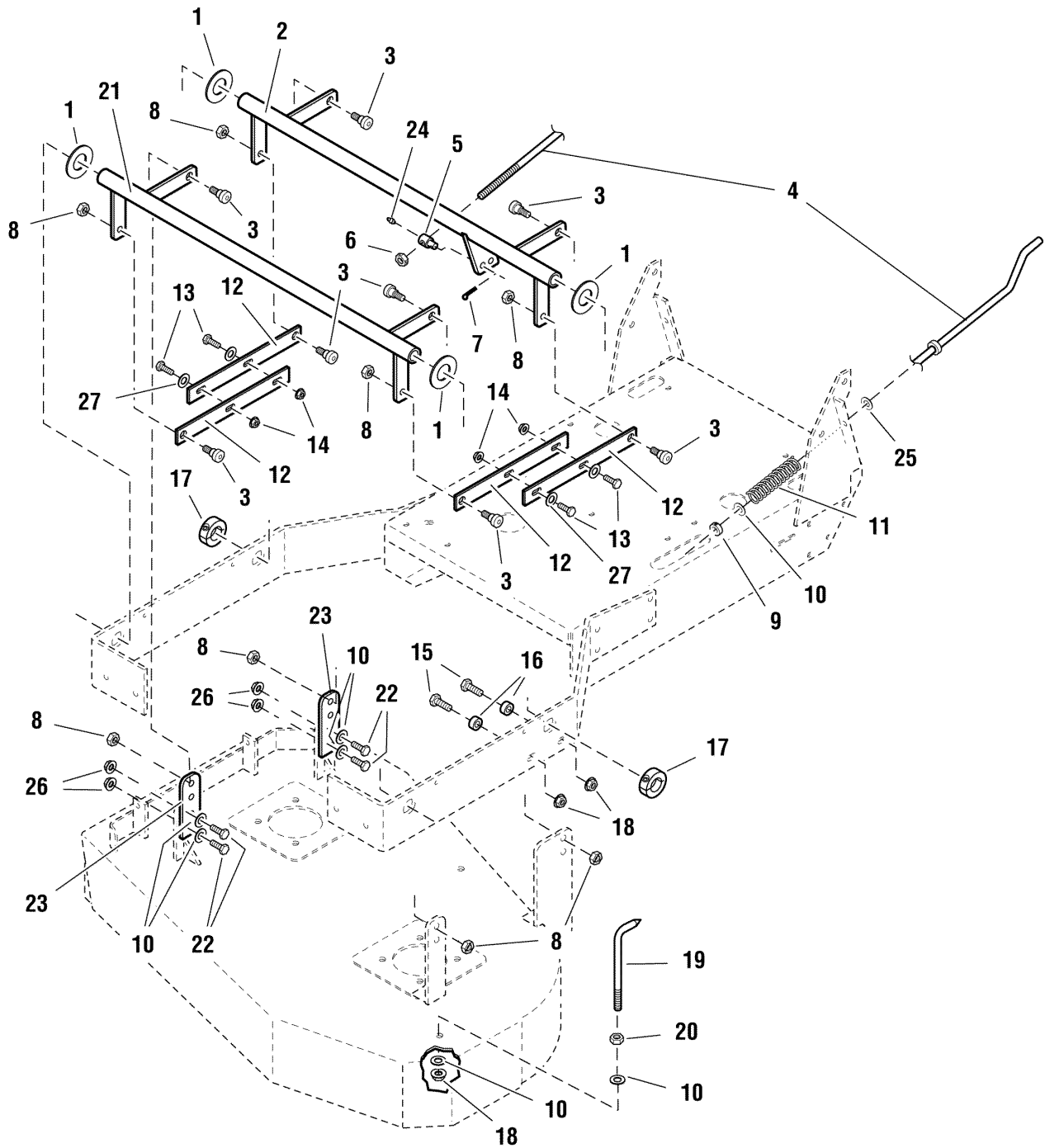
The above parts group applies to the following Mfg. Nos.:

5900766 - Pacer

## 32" Mower Deck - Height Adjustment

NOTE: Unless noted otherwise,  
use the standard hardware torque  
specification chart.

5301453



The above parts group applies to the following Mfg. Nos.:

5900766 - Pacer



## 32" Mower Deck - Height Adjustment

REF NO.	PART NO.	QTY.	DESCRIPTION
1	5025162SM	4	WASHER-1.00 HYDRO CUT
2	5047682CSM	1	WELD, DECK PIVOT, REAR
3	5025356SM	8	BOLT, 3/8-16 X 3/8, 1/2 SHOULDER
4	5047655SM	1	ROD CUTTER DECK HEIGHT CONTROL
5	5048526SM	1	LINKAGE, ADJUSTER
6	5025100SM	1	NUT, 3/8-16 HEX SIDE LOCK
7	5025201X6SM	1	PIN, COTTER, 3/32 X 3/4
8	5025046SM	8	NUT, 3/8-16, HEX TOP LOCK
9	5010546SM	1	COLLAR, 3/8 SET
10	5025156SM	7	WASHER, 3/8 SAE
11	5022645SM	1	SPRING, REVERSE RETURN
12	5047710CSM	4	LINK, DECK ADJUST.
13	5025011X8SM	4	BOLT, 5/16-18 X 1 GD5 YZ
14	5025139SM	4	NUT, 5/16-18 HEX SERRATED FLANGE (LARGE)
15	5025013X10SM	2	BOLT, 3/8-16 X 1-1/4 GD5
16	5044933SM	2	SPACER, .39 X .75 X .38
17	5048549SM	2	COLLAR, 1" DOUBLE SPLIT
18	5025128SM	3	NUT, 3/8-16 HEX SERRATED FLANGE
19	5047737SM	1	POINTER, CUT HEIGHT
20	5025034SM	1	NUT, 3/8-16 HEX
21	5047681CSM	1	DECK PIVOT WELDMENT, FRONT
22	5025013X8SM	4	BOLT, 3/8-16 X 1 GD5 YZ
23	5048439CSM	2	HANGER, DECK
24	5020095SM	1	GREASE FITTING, 1/4-28 STRAIGHT
25	5048548SM	1	WASHER, 3/8" NYLON HYDRO CUT
26	5025394SM	4	NUT, 3/8-16 HEX NYLOCK FLANGE
27	5025292SM	4	WASHER, 5/16 GD.9 FLAT

### Footnotes

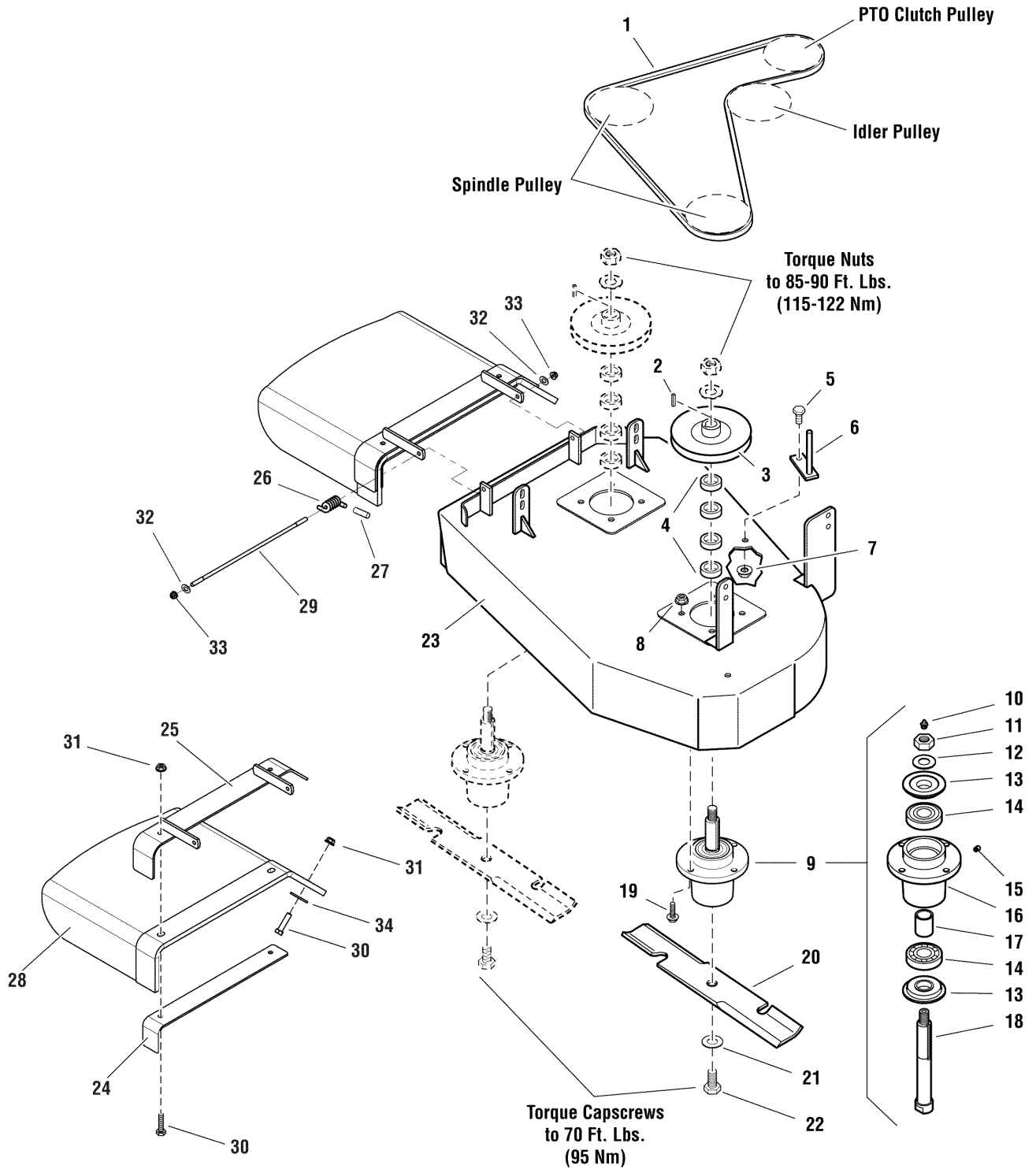
The above parts group applies to the following Mfg. Nos.:

5900766 - Pacer

# 32" Mower Deck - Housing, Spindles, Blades & Pulleys

NOTE: Unless noted otherwise, use the standard hardware torque specification chart.

5301454



The above parts group applies to the following Mfg. Nos.:  
5900766 - Pacer

## 32" Mower Deck - Housing, Spindles, Blades & Pulleys

REF NO.	PART NO.	QTY.	DESCRIPTION
1	5022918SM	1	BELT, #7-7169
2	5050407X8SM	2	KEY, 1/4 SQ. X 1.00
3	5047638SM	2	PULLEY, SPINDLE
4	5041476SM	8	SPACER, 1.02 X 1.56 X .50
5	5025013X8SM	1	BOLT, 3/8-16 X 1 GD5 YZ
6	5047777CSM	1	WELD, BELT GUIDE - ORG
7	5025126SM	1	NUT, 1/4-20 HEX SERR. FLANGE
8	5025392SM	8	NUT, 5/16-18 HEX NYLOCK FLANGE
9	5061096SM	2	ASSM, SPINDLE, LONG SHAFT (Includes Ref No. 10-18)
10	5023329SM	2	GREASE FITTING
11	5025405SM	2	NUT, 3/4-16 HEX
12	5025406SM	2	WASHER, 3/4 BELLEVILLE
13	5049793SM	4	SHIELD, TRASH
14	5023330SM	4	BEARING, .98 X 2.44 X .67
15	5023296SM	2	FITTING, RELIEF, 1-5 PSI
16	5061097SM	2	HOUSING, SPINDLE
17	5061099SM	2	SPACER
18	5061100SM	2	SHAFT, SPINDLE
19	5023156SM	8	BOLT, 5/16-18 X 1 1/4 FLANGE
20	5020843SM	2	BLADE, 16.25
21	5025477SM	2	WASHER, 5/8 GRADE 8, YZ
22	5025320X14SM	2	BOLT, 5/8-11 X 1-3/4 GD8
23	5047576CSM	1	WELD, MOWER DECK, 32" - ORG
24	5404258CSM	1	BRACKET, CHUTE SUPPORT - ORG
25	5404257CSM	1	WELD, CHUTE BRACKET - ORG
26	7101082SM	1	SPRING-TORSION CHUTE 44/50" BLK
27	5023489SM	1	CAP, PROTECTOR, .120 ID
28	5101597SM	1	RUBBER DISCHARGE CHUTE, S50X-36 OFFSET
29	5045914SM	1	ROD, CHUTE PIVOT
30	5025013X12SM	3	BOLT, 3/8-16 X 1-1/2 GD5 YZ
31	5025394SM	3	NUT, 3/8-16 HEX NYLOCK FLANGE
32	5025155SM	2	WASHER, 5/16 SAE
33	5025045SM	2	NUT, 5/16-24 HEX NYLON LOCK
34	5100548SM	1	WASHER, .390 X 1.50 X .109, YZ

### Footnotes

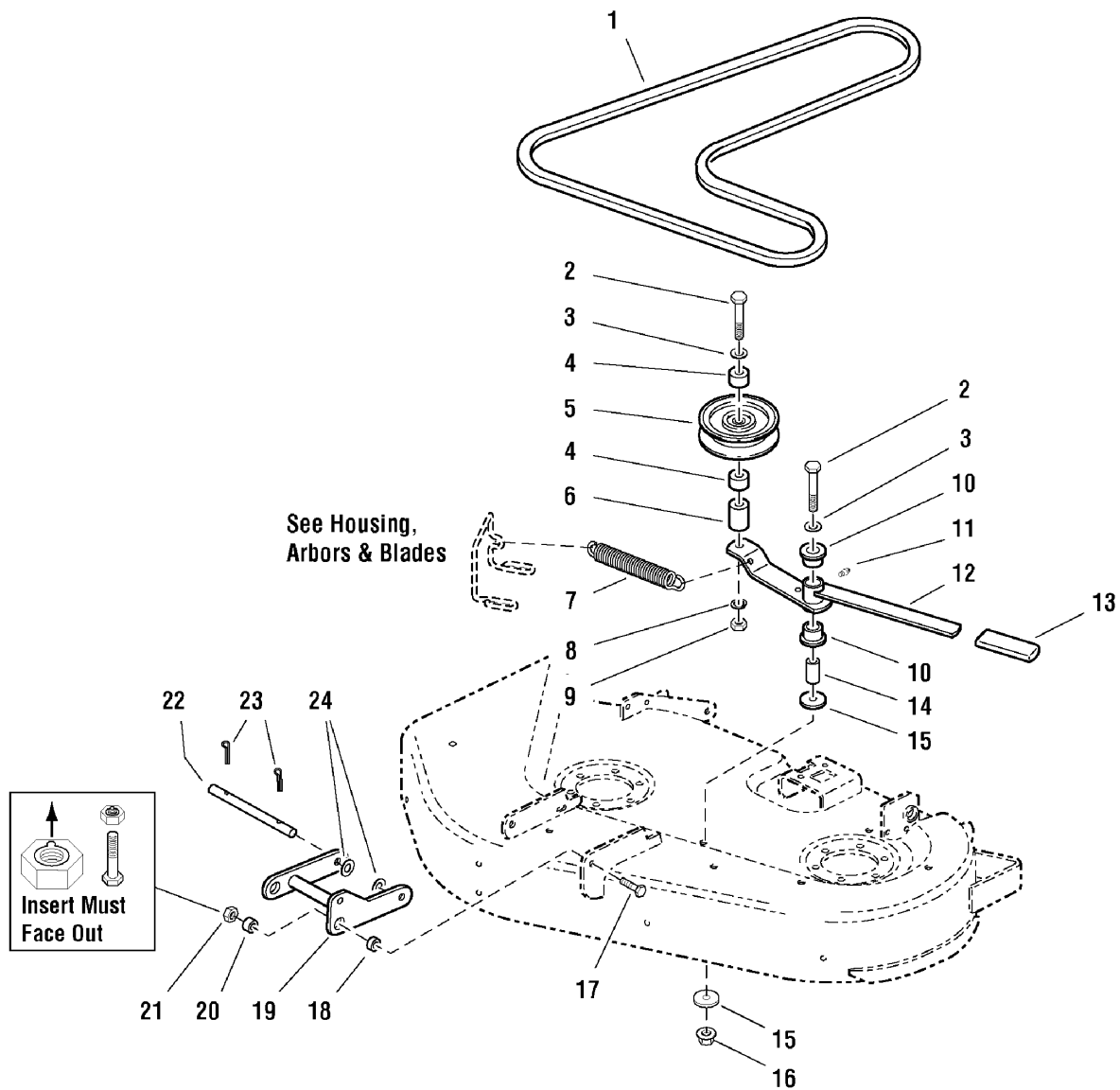
The above parts group applies to the following Mfg. Nos.:

5900766 - Pacer

# 34" Mower Deck - Belt, Idler Arm & Hitch (2264pb0)

2264pb0

NOTE: Unless noted otherwise,  
use the standard hardware torque  
specification chart.



The above parts group applies to the following Mfg. Nos.:

1694287 - 34" Mower

2690447 - Pacer

5900630 - Pacer

### 34" Mower Deck - Belt, Idler Arm & Hitch (2264pb0)

REF NO.	PART NO.	QTY.	DESCRIPTION
1	1723391SM	1	BELT
2	5025013X22SM	2	CAPSCREW, Hex Head, 3/8-16 x 2-3/4
3	1924940SM	2	WASHER, 3/8
4	1667811SM	2	SPACER
5	1704926SM	1	PULLEY, Idler
6	1667812SM	1	SPACER
7	2164213SM	1	SPRING, Extension
8	5025171SM	1	LOCKWASHER, 3/8
9	1916950SM	1	NUT, Hex, 3/8-16
10	1663114SM	2	BUSHING
11	2812808SM	1	FITTING, Lube
12	1724535SM	1	LEVER & ARM ASSEMBLY, Complete (Includes Ref. No. 10 & 11)
13	1665835	1	GRIP
14	1657242SM	1	SPACER
15	1924356SM	2	WASHER, 3/8
16	5025128SM	1	NUT, Hex Serrated Flange, 3/8-16
17	5025013X12SM	2	CAPSCREW, Hex Head, 3/8-16 x 1-1/2
18	1667811SM	2	SPACER
19	1724357ASM	1	HITCH
20	2157081SM	2	SPACER
21	2860681SM	2	NUT, Hex Lock, Aluminum Insert, 3/8-16
22	1724430SM	1	PIN
23	1918452SM	2	PIN, Cotter
24	5025158SM	2	WASHER, 1/2

#### Footnotes

---

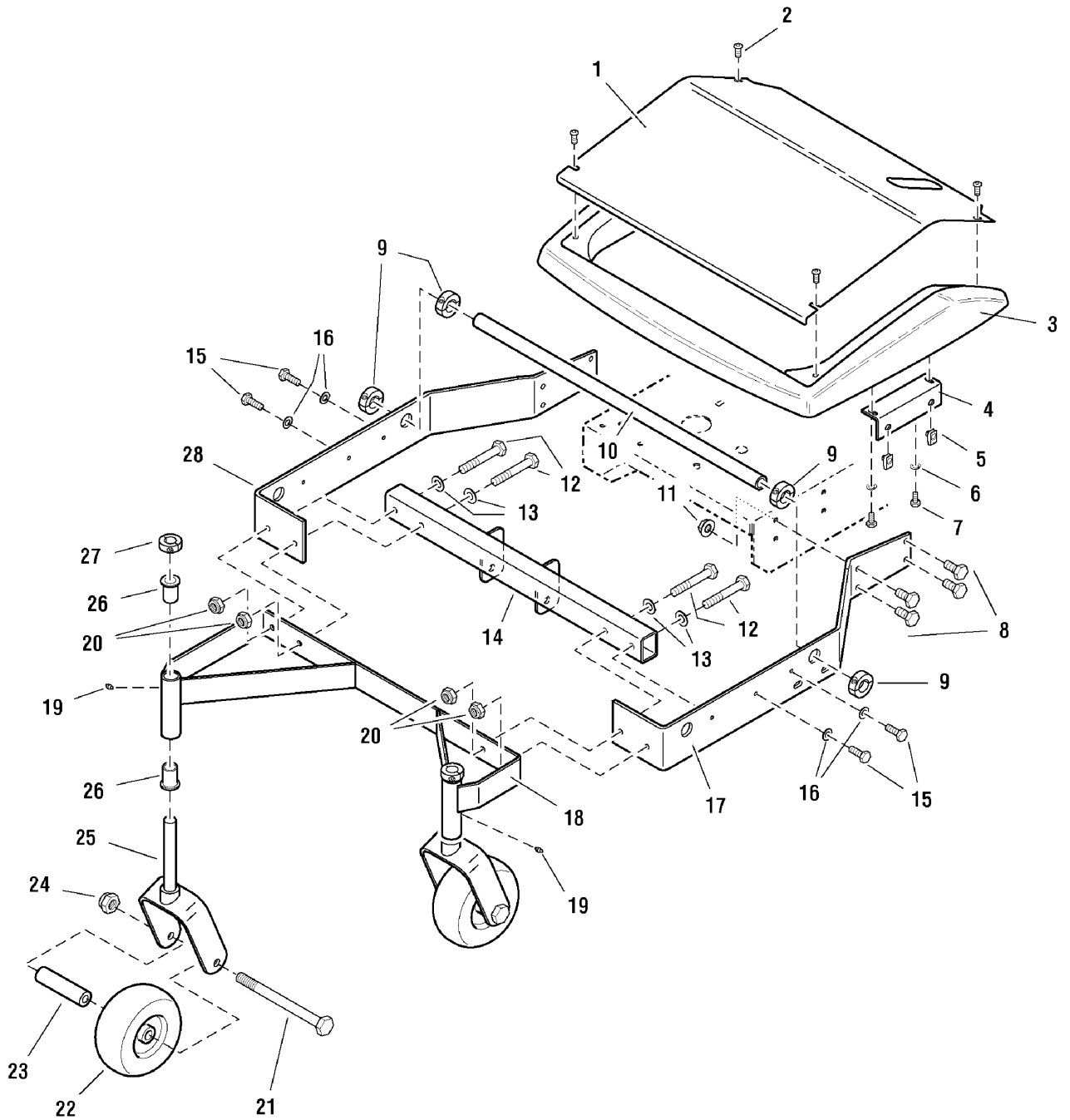
**The above parts group applies to the following Mfg. Nos.:**

1694287 - 34" Mower  
2690447 - Pacer  
5900630 - Pacer

## 34" Mower Deck - Frame, Caster & Shield (2264fr0)

2264fr0

NOTE: Unless noted otherwise,  
use the standard hardware torque  
specification chart.



The above parts group applies to the following Mfg. Nos.:

1694287 - 34" Mower

2690447 - Pacer

5900630 - Pacer

### 34" Mower Deck - Frame, Caster & Shield (2264fr0)

REF NO.	PART NO.	QTY.	DESCRIPTION
1	5048181CSM	1	SHIELD INSERT
2	5025299X4SM	4	SCREW, Allen Head, 1/4-20 x 1/2
3	5048150SM	1	GUARD, Mower Deck
4	5048353CSM	2	SHIELD MOUNT BRACKET
5	5022308SM	4	BODY CLIP, 5/16-18
6	5025169SM	4	LOCKWASHER, 1/4
7	5025010X6SM	4	CAPSCREW, Hex Head, 1/4-20 x 3/4
8	5025013X8SM	8	CAPSCREW, Hex Head, 3/8-16 x 1
9	5048549SM	4	COLLAR, Double Split, 1
10	5047678CSM	1	SHAFT
11	5025128SM	8	NUT, Hex Serrated Flange, 3/8-16
12	5025013X20SM	4	CAPSCREW, Hex Head, 3/8-16 x 2-1/2
13	5025156SM	4	WASHER, 3/8
14	5048196CSM	1	HITCH TUBE
15	5025010X8SM	4	CAPSCREW, Hex Head, 5/16-18 x 1
16	5025155SM	4	WASHER, 5/16
17	5047648CSM	1	FRAME RAIL - LH
18	5047825CSM	1	CASTER MOUNT FRAME
19	5020095SM	2	GREASE FITTING, 1/4-28
20	5025096SM	4	NUT, Hex Nylon Lock, 3/8-16
21	5025017X44SM	2	CAPSCREW, Hex Head, 1/2-13 x 5-1/2
22	1722951SM	2	CASTER TIRE
23	5041657SM	2	SPACER
24	5025056SM	2	NUT, Hex Nylon Lock, 1/2-13
25	5047929CSM	2	CASTER YOKE
26	5020823SM	4	BUSHING, Flange
27	5010114SM	2	COLLAR, Split, 3/4
28	5047649CSM	1	FRAME RAIL - RH

### Footnotes

---

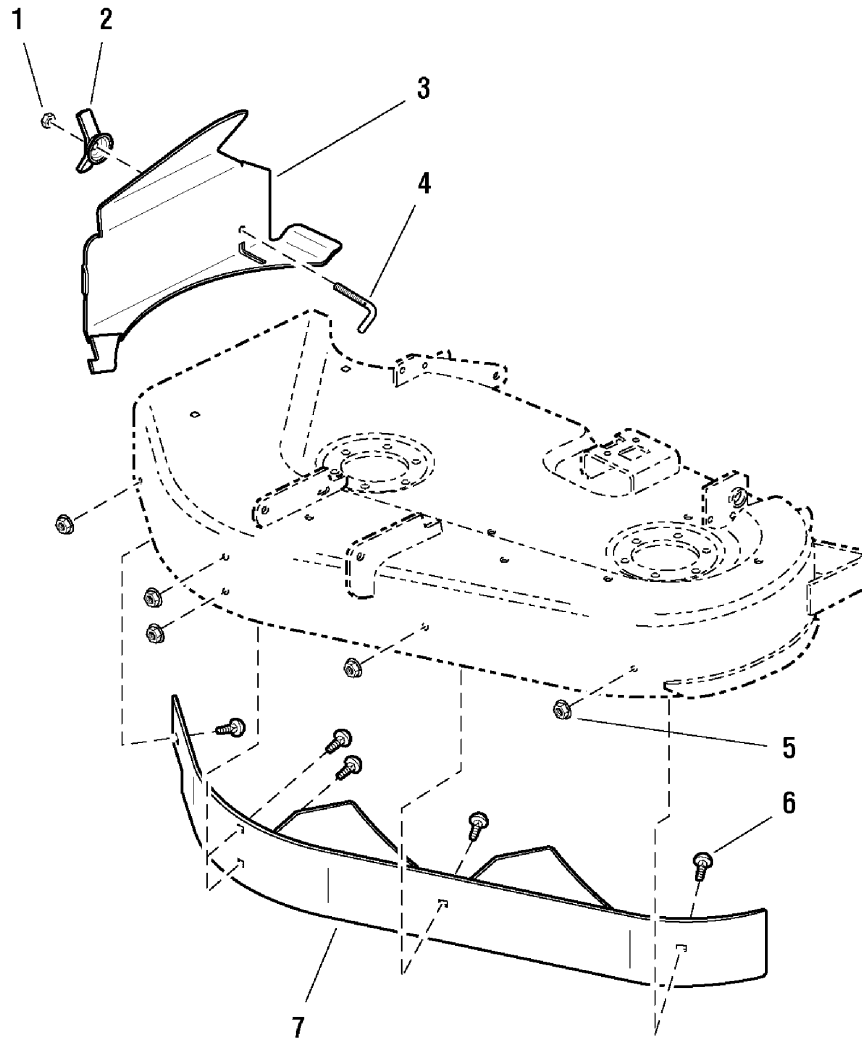
**The above parts group applies to the following Mfg. Nos.:**

1694287 - 34" Mower  
2690447 - Pacer  
5900630 - Pacer

## 34" Mower Deck - Grass Mulcher (2264mlc0)

2264mlc0

NOTE: Unless noted otherwise,  
use the standard hardware torque  
specification chart.



**The above parts group applies to the following Mfg. Nos.:**

1694287 - 34" Mower

2690447 - Pacer

5900630 - Pacer



### **34" Mower Deck - Grass Mulcher (2264mlc0)**

---

<b>REF NO.</b>	<b>PART NO.</b>	<b>QTY.</b>	<b>DESCRIPTION</b>
1	7091575SM	1	NUT, Hex Lock, 5/16-18
2	1679163SM	1	WING NUT
3	1724832ASM	1	MULCH PLATE
4	1724475SM	1	J-BOLT
5	5025127SM	5	NUT, Hex Serrated Flange, 5/16-18
6	5025145X6SM	5	CARRIAGE BOLT, 5/16-18 x 3/4
7	1724457ASM	1	34" BAFFLE ASSEMBLY

### **Footnotes**

---

**The above parts group applies to the following Mfg. Nos.:**

1694287 - 34" Mower

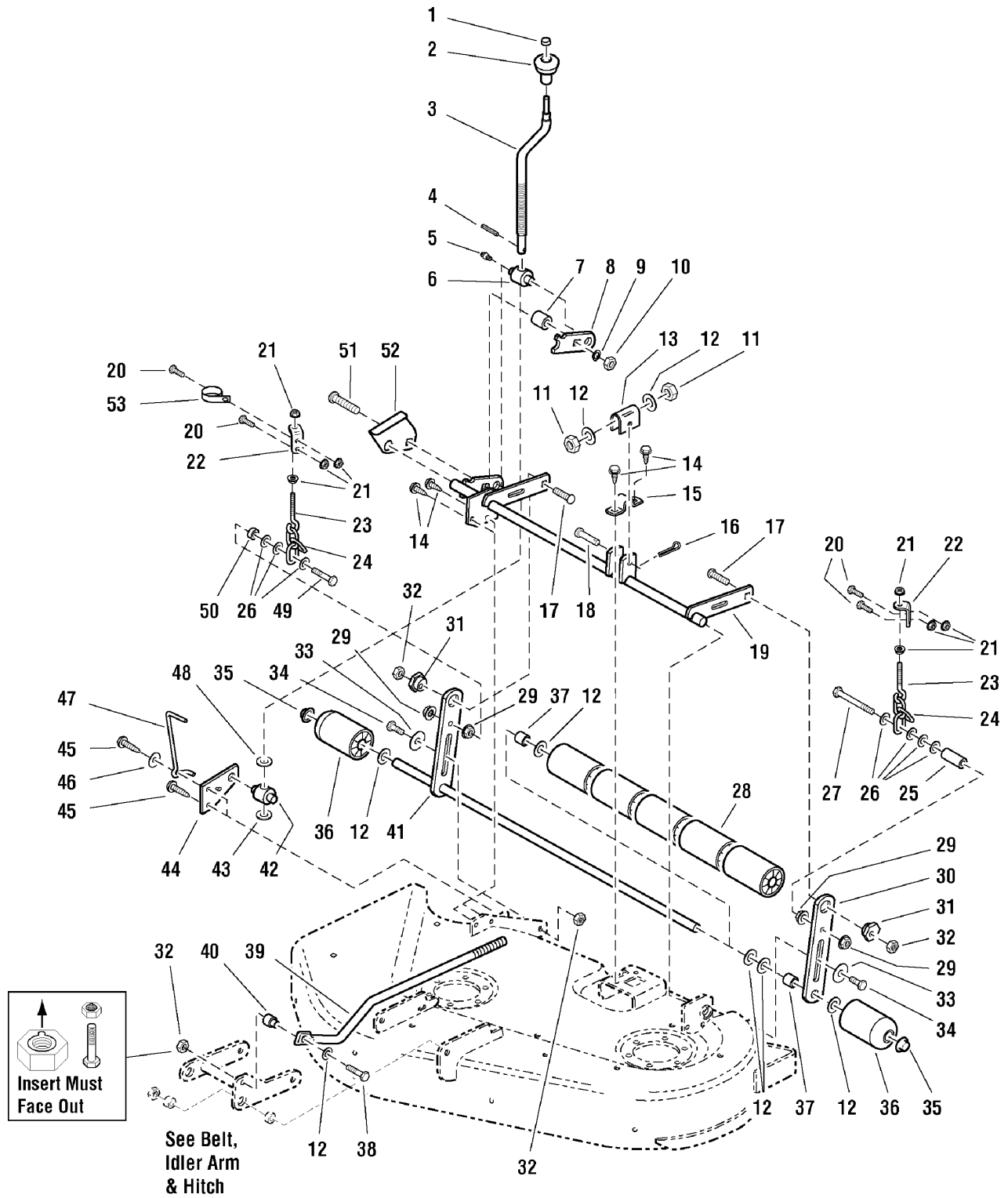
2690447 - Pacer

5900630 - Pacer

# 34" Mower Deck - Height Adjustment & Roller Bar (2264ha0)

2264ha0

**NOTE:** Unless noted otherwise,  
use the standard hardware torque  
specification chart.



**The above parts group applies to the following Mfg. Nos.:**

1694287 - 34" Mower

2690447 - Pacer

5900630 - Pacer

### 34" Mower Deck - Height Adjustment & Roller Bar (2264ha0)

REF NO.	PART NO.	QTY.	DESCRIPTION
1	1960093SM	1	NUT, Push, 3/8, Black
2	1714084SM	1	KNOB, Spinner
3	1719901SM	1	CRANK, Height Adjustment, Black
4	2816001SM	1	PIN, Spring
5	1704314SM	1	FITTING, Lube
6	1715892SM	1	TRUNNION
7	1679166SM	1	SPACER
8	1722978ASM	1	ARM, Height Adjust
9	5025331SM	1	LOCKWASHER, 1/2
10	5025038SM	1	NUT, Hex, 1/2-13
11	5025040SM	2	NUT, Hex, 5/8-18
12	5025281SM	7	WASHER, 5/8
13	1706645ASM	1	TRUNNION
14	1664847SM	4	CAPSCREW, Hex Washer Head, Taptite, 5/16-18 x 3/4, Black
15	1665374SM	1	STRAP
16	1918452SM	1	PIN, Cotter
17	1931352SM	2	CARRIAGE BOLT, 3/8-16 x 1-1/2
18	2118053SM	1	PIN, Clevis
19	1724362ASM	1	SHAFT ASSEMBLY
20	5025011X8SM	4	CAPSCREW, Hex Head, 5/16-18 x 1
21	5025127SM	8	NUT, Hex Serrated Flange, 5/16-18
22	1724619ASM	2	BRACKET, Rear Roller
23	2107121SM	2	EYEBOLT
24	1707514ASM	2	CHAIN, 3 Links
25	1719868SM	1	SPACER
26	5025156SM	8	WASHER, 3/8
27	1960653SM	1	CAPSCREW, Hex Head, 3/8-16 x 3-3/4, Black
28	1668513SM	5	ROLLER
29	5025128SM	4	NUT, Hex Serrated Flange, 3/8-16
30	1724394ASM	1	BAR, Roller
31	1704082SM	2	CAM, Eccentric
32	2860681SM	5	NUT, Hex Lock, Aluminum Insert, 3/8-16
33	1924361SM	2	WASHER, 1/2
34	2172622SM	2	SHOULDER BOLT
35	1960520SM	2	NUT, Push, 5/8, Black
36	1722036SM	2	ROLLER, End
37	1602946SM	2	SPACER
38	5025013X14SM	1	CAPSCREW, Hex Head, 3/8-16 x 1-3/4
39	1724425SM	1	ROD, Pitch
40	1706644SM	1	SPACER
41	1724396ASM	1	SHAFT & BAR ASSEMBLY
42	1724009SM	1	TRUNNION
43	1704097SM	1	WASHER, Detent, Black
44	1704080ASM	1	PLATE

#### Footnotes

The above parts group applies to the following Mfg. Nos.:

1694287 - 34" Mower

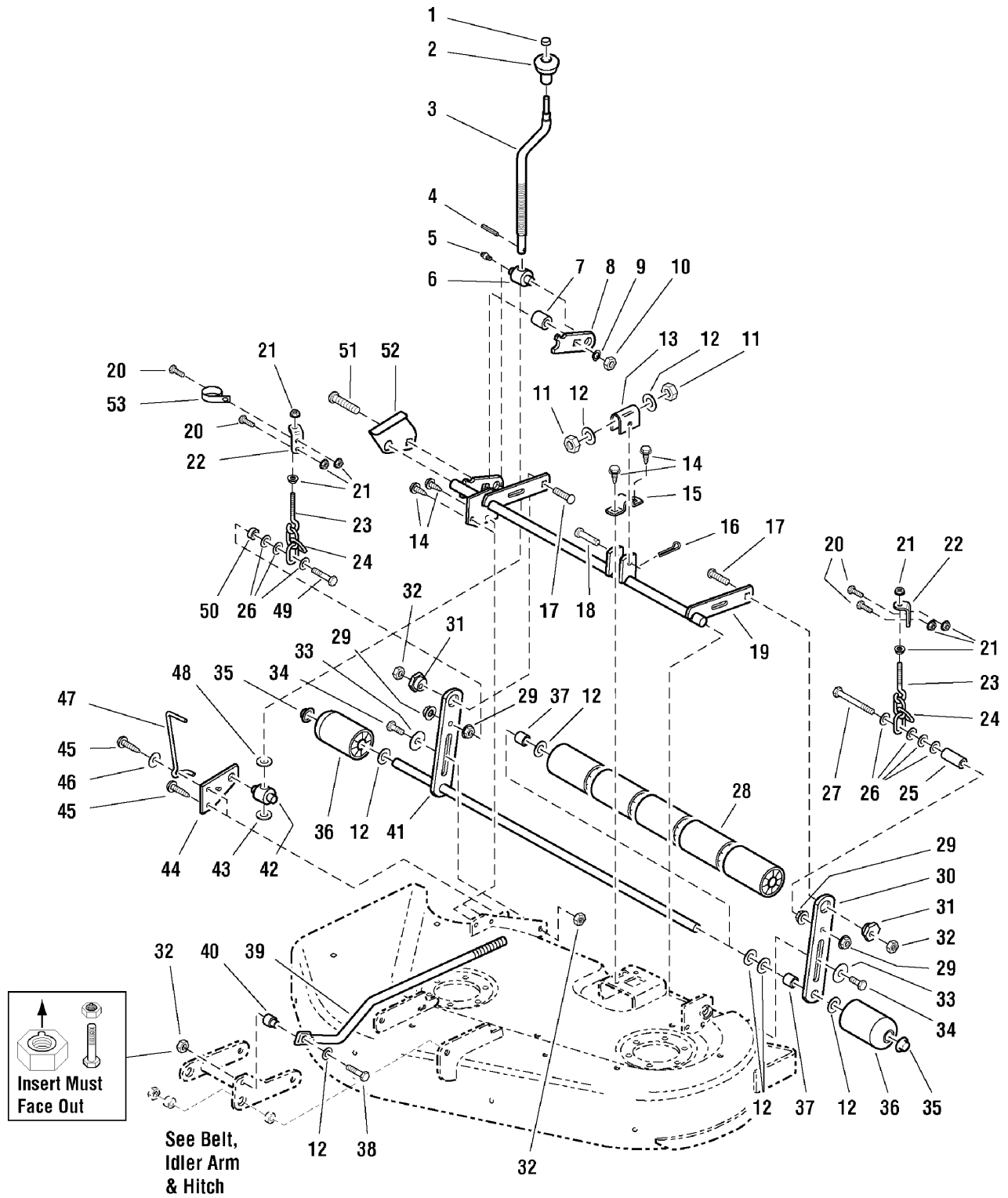
2690447 - Pacer

5900630 - Pacer

# 34" Mower Deck - Height Adjustment & Roller Bar (2264ha0)

2264ha0

**NOTE:** Unless noted otherwise,  
use the standard hardware torque  
specification chart.



**The above parts group applies to the following Mfg. Nos.:**

- 1694287 - 34" Mower
- 2690447 - Pacer
- 5900630 - Pacer

### **34" Mower Deck - Height Adjustment & Roller Bar (2264ha0)**

---

<b>REF NO.</b>	<b>PART NO.</b>	<b>QTY.</b>	<b>DESCRIPTION</b>
45	1931202SM	2	CAPSCREW, Hex Washer Head, Taptite, 5/16-18 x 1-1/4, Black
46	1919381SM	1	WASHER, 5/16, Black
47	1704114SM	1	ROD, Height of Cut
48	5025158SM	1	WASHER, 1/2, Black
49	5025013X16SM	1	CAPSCREW, Hex Head, 3/8-16 x 2
50	1667811SM	1	SPACER
51	1960489SM	1	CARRIAGE BOLT, 1/2-13 x 2-1/2, Black
52	1724512ASM	1	BRACKET, Height of Cut
53	5023173SM	1	CLAMP

#### **Footnotes**

---

**The above parts group applies to the following Mfg. Nos.:**

1694287 - 34" Mower

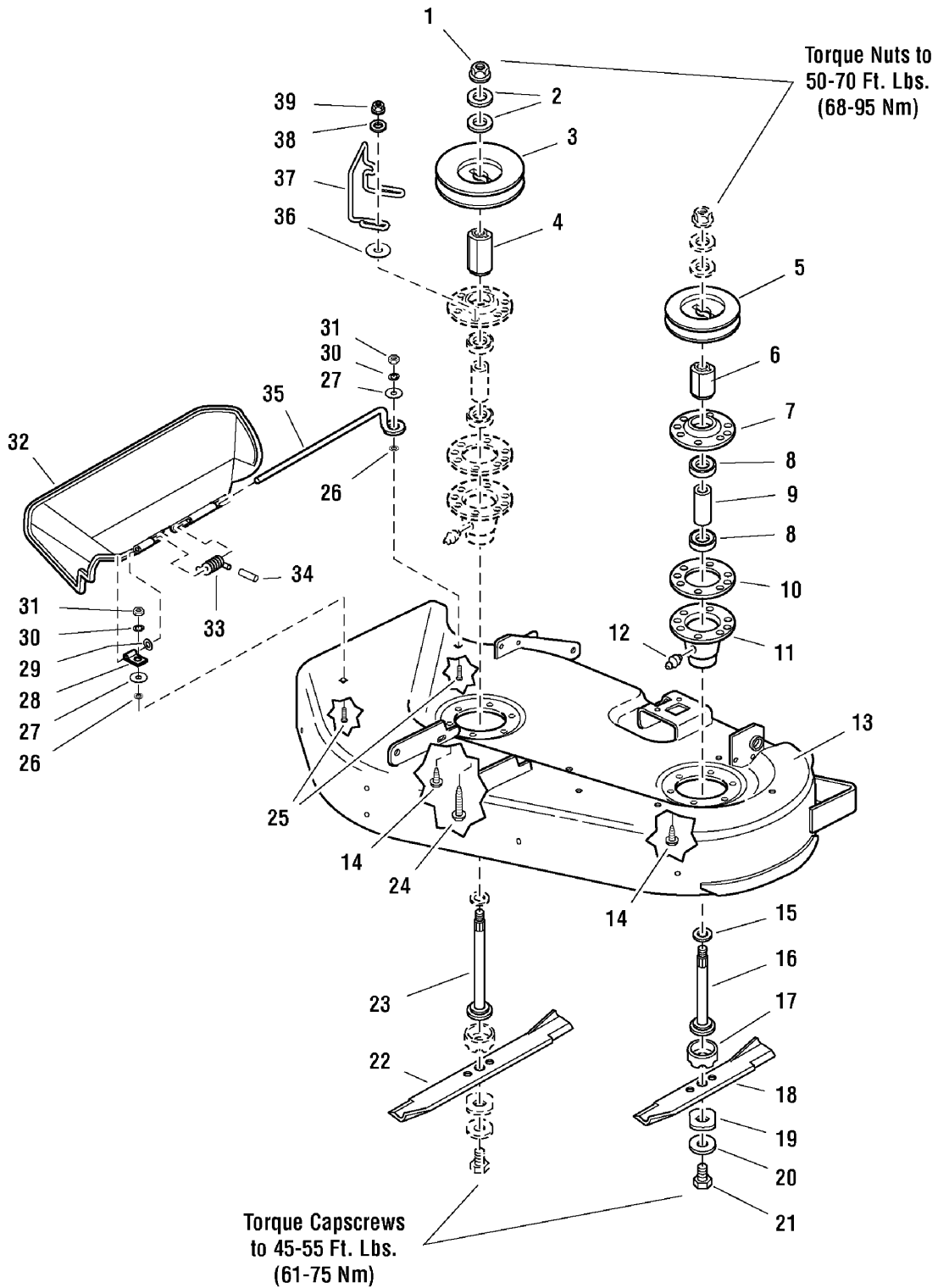
2690447 - Pacer

5900630 - Pacer

# 34" Mower Deck - Housing, Arbors & Blades (2264hc0)

2264hc0

NOTE: Unless noted otherwise, use the standard hardware torque specification chart.



The above parts group applies to the following Mfg. Nos.:

1694287 - 34" Mower

2690447 - Pacer

5900630 - Pacer

## 34" Mower Deck - Housing, Arbors & Blades (2264hc0)

REF NO.	PART NO.	QTY.	DESCRIPTION
1	1714419SM	2	NUT, Hex Flange, 9/16-18
2	1713675SM	4	WASHER, Belleville
3	1713091SM	1	PULLEY
4	1713616SM	1	HUB
5	1713090SM	1	PULLEY
6	1713614SM	1	HUB
7	1713199ASM	2	COVER, Arbor Housing
8	1705897SM	4	BEARING
9	1732543SM	2	SPACER
10	1707335SM	2	GASKET, Foam
11	1713338ASM	2	HOUSING, Arbor, Bottom (Includes Ref. No. 12)
12	1704314SM	2	FITTING, Lube
13	5600253	1	DECK SHELL W/ DECALS, 34" Pacer
14	1664847SM	10	CAPSCREW, Hex Washer Head, Taptite, 5/16-18 x 3/4, Black
15	1713619SM	2	WASHER
16	1713610SM	1	SHAFT, Arbor
17	1713196SM	2	SHIELD, Grass
18	1706737ASM	1	BLADE, Mower, 14.42
19	1713089SM	2	WASHER, Hex, Special
20	1656916SM	2	WASHER, Spring
21	2823471SM	2	CAPSCREW, Hex Head, 7/16-14 x 1-1/4, Black
22	1706738ASM	1	BLADE, Mower, 19.90
23	1713612SM	1	SHAFT, Arbor
24	1930600SM	2	CAPSCREW, Hex Washer Head, Taptite, 5/16-18 x 1-1/2, Black
25	1931318SM	2	CARRIAGE BOLT, 1/4-20 x 7/8, Black
26	1960518SM	2	NUT, Push, 1/4, Black
27	1960353SM	2	WASHER, 1/4, Black
28	1704873SM	1	CLAMP
29	1919326SM	1	WASHER, 5/16, Black
30	5025169SM	2	LOCKWASHER, 1/4, Black
31	5025287SM	2	NUT, Hex, 1/4-20, Black
32	1705449SM	1	DEFLECTOR, Plastic
33	7101082SM	1	SPRING, Torsion
34	1723323SM	1	CAP, Spring End
35	5049245SM	1	ROD, Deflector, Front
36	5025305SM	2	WASHER, 5/16, Black
37	1704099SM	1	BELT GUIDE
38	1919381SM	2	WASHER, 5/16, Black
39	5025139SM	2	NUT, Hex Flange, 5/16-18

### Footnotes

---

#### The above parts group applies to the following Mfg. Nos.:

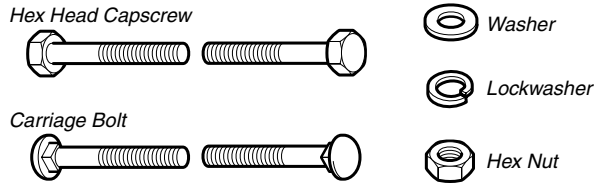
1694287 - 34" Mower  
2690447 - Pacer  
5900630 - Pacer





# Hardware Identification & Torque Specifications

## Common Hardware Types

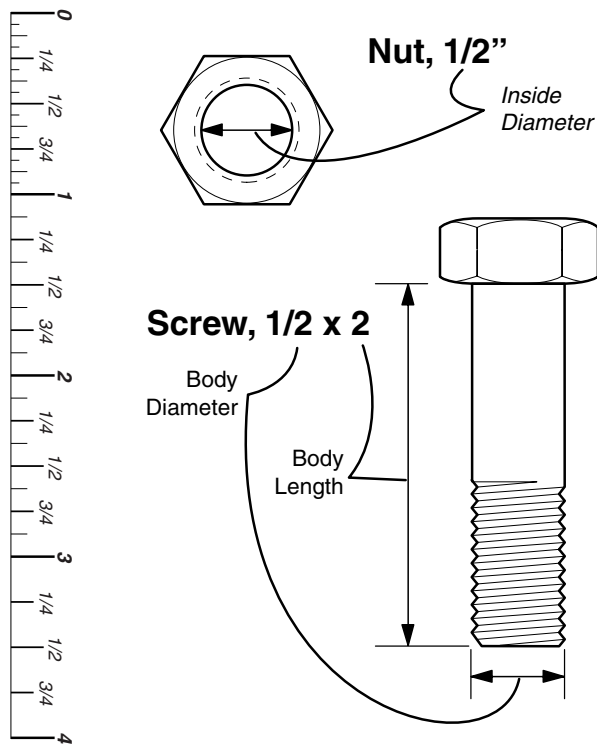


## Standard Hardware Sizing

When a washer or nut is identified as 1/2", this is the *Nominal size*, meaning the *inside diameter* is 1/2 inch; if a second number is present it represents the *threads per inch*

When bolt or capscrew is identified as 1/2 - 16 x 2", this means the *Nominal size*, or *body diameter* is 1/2 inch; the second number represents the *threads per inch* (16 in this example, and the final number is the *body length* of the bolt or screw (in this example 2 inches long).

**The guides and ruler furnished below are designed to help you select the appropriate hardware and tools.**



## Torque Specification Chart

FOR STANDARD MACHINE HARDWARE (Tolerance ± 20%)

Hardware Grade	No Marks SAE Grade 2		SAE Grade 5		SAE Grade 8	
	in/lbs ft/lbs	Nm.	in/lbs ft/lbs	Nm.	in/lbs ft/lbs	Nm.
8-32	19	2.1	30	3.4	41	4.6
8-36	20	2.3	31	3.5	43	4.9
10-24	27	3.1	43	4.9	60	6.8
10-32	31	3.5	49	5.5	68	7.7
1/4-20	66	7.6	8	10.9	12	16.3
1/4-28	76	8.6	10	13.6	14	19.0
5/16-18	11	15.0	17	23.1	25	34.0
5/16-24	12	16.3	19	25.8	27	34.0
3/8-16	20	27.2	30	40.8	45	61.2
3/8-24	23	31.3	35	47.6	50	68.0
7/16-14	30	40.8	50	68.0	70	95.2
7/16-20	35	47.6	55	74.8	80	108.8
1/2-13	50	68.0	75	102.0	110	149.6
1/2-20	55	74.8	90	122.4	120	163.2
9/16-12	65	88.4	110	149.6	150	204.0
9/16-18	75	102.0	120	163.2	170	231.2
5/8-11	90	122.4	150	204.0	220	299.2
5/8-18	100	136	180	244.8	240	326.4
3/4-10	160	217.6	260	353.6	386	525.0
3/4-16	180	244.8	300	408.0	420	571.2
7/8-9	140	190.4	400	544.0	600	816.0
7/8-14	155	210.8	440	598.4	660	897.6
1-8	220	299.2	580	788.8	900	1,244.0
1-12	240	326.4	640	870.4	1,000	1,360.0

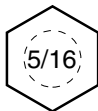
### NOTES

- These torque values are to be used for all hardware excluding: locknuts, self-tapping screws, thread forming screws, sheet metal screws and socket head setscrews.
- Recommended seating torque values for locknuts:
  - for prevailing torque locknuts - use 65% of grade 5 torques.
  - for flange whizlock nuts and screws - use 135% of grade 5 torques.
- Unless otherwise noted on assembly drawings, all torque values must meet this specification.

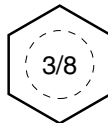
## Wrench & Fastener Size Guide



1/4" Bolt or Nut  
Wrench—7/16"



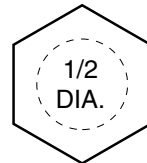
5/16" Bolt or Nut  
Wrench—1/2"



3/8" Bolt or Nut  
Wrench—9/16"



7/16" Bolt or Nut  
Wrench (Bolt)—5/8"  
Wrench (Nut)—11/16"



1/2" Bolt or Nut  
Wrench—3/4"

***Simplicity***

---

MANUFACTURING, INC.  
500 N. Spring Street / PO Box 997  
Port Washington, WI 53074-0997 USA

[www.simplicitymfg.com](http://www.simplicitymfg.com)

Briggs and Stratton Yard Power Products Group  
Copyright © 2008 by Briggs and Stratton Corporation  
Milwaukee, WI, USA. All rights reserved

