

Installation Instructions

44" & 50" Mulching Kits

For 44" Mower Decks — Mfg. No. 1692884

For 50" Mower Decks — Mfg. No. 1692885

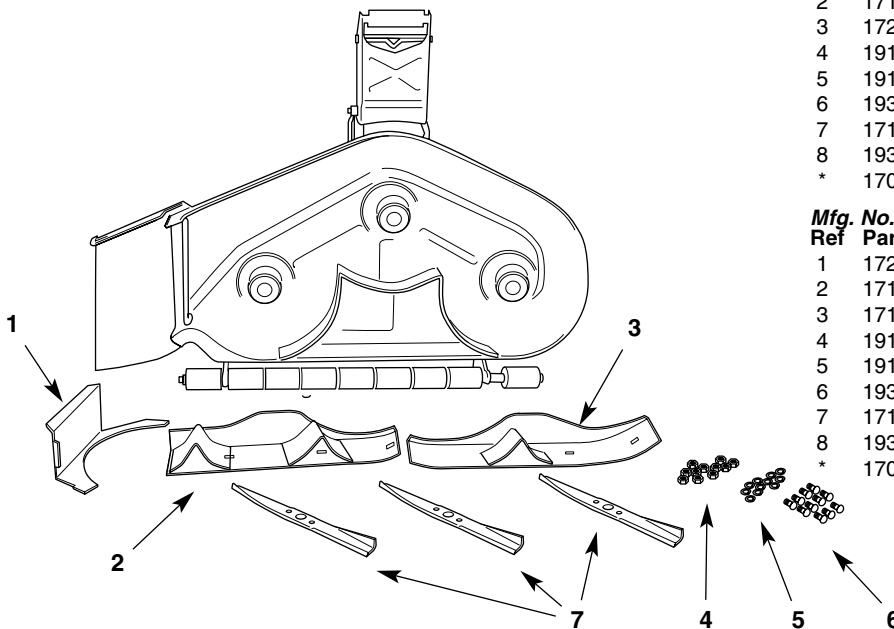
Special Tools Recommended



- Punch (for decks with knock-outs)
- Drill
- 11/32" Drill Bit

- Wood Block (for blade removal/installation)
- Three or four Large C-type Clamps
- Torque Wrench

Kit Parts Included

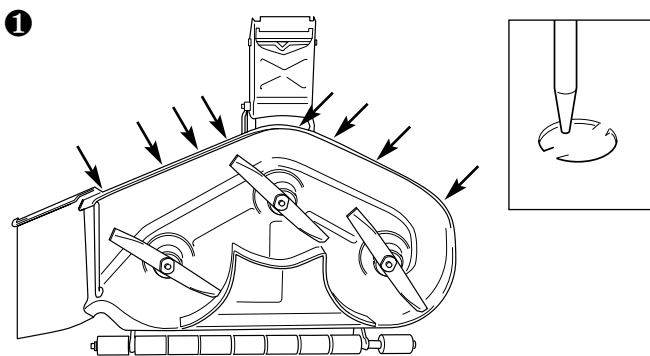


Mfg. No. 1692884

Ref	Part No.	Qty.	Description
1	1727448	1	PLATE, Discharge Closure
2	1716149	1	BAFFLE Assembly, RH 44"
3	1721946	1	BAFFLE Assembly, LH 44"
4	1917372	11	NUT, Hex 5/16-18
5	1917356	11	LOCK WASHER, 5/16
6	1931332	9	BOLT, Carriage 5/16-18 x 5/8
7	1716696	3	BLADE, Mulch for 44"
8	1936842	2	SCREW, Phillips, 5/16-18 x 3/4
*	1708222	1	"Mulch-It" Manual

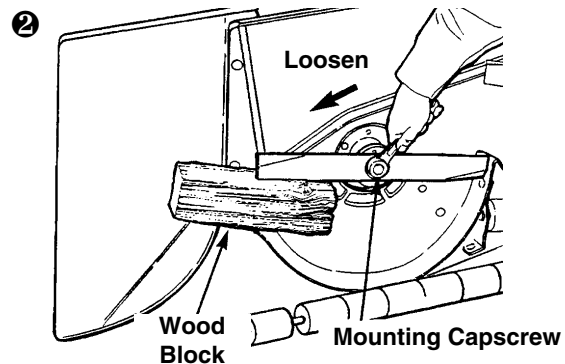
Mfg. No. 1692885

Ref	Part No.	Qty.	Description
1	1727448	1	PLATE, Discharge Closure
2	1716151	1	BAFFLE Assembly, RH 50"
3	1716150	1	BAFFLE Assembly, LH 50"
4	1917372	10	NUT, Hex 5/16-18
5	1917356	10	LOCK WASHER, 5/16
6	1931332	8	BOLT, Carriage 5/16-18 x 5/8
7	1716697	3	BLADE, Mulch for 50"
8	1936842	2	SCREW, Phillips, 5/16-18 x 3/4
*	1708222	1	"Mulch-It" Manual



① Step One — Remove the mower deck from the tractor. Locate the eight knock-outs as shown by the arrows in the illustration above. Knock these out carefully with a punch as shown in the inset above and twist out.

On decks without knock-outs, position the baffle and discharge plates as shown in Steps 4 through 6, then drill ten 11/32" holes at each of the locations to attach the baffle plates.

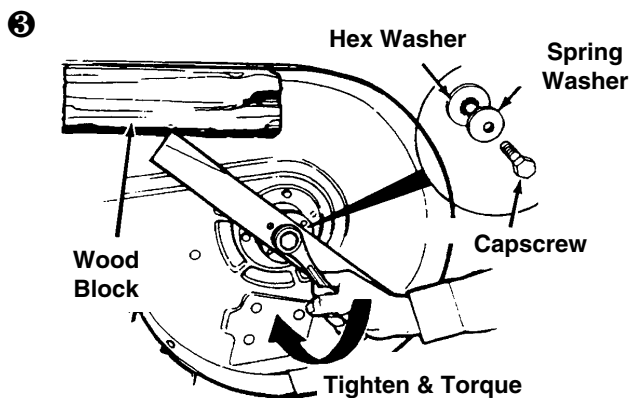


② Step Two — Remove the standard blades using a wood block to hold blades in position while removing the mounting capscrew as shown above.



WARNING

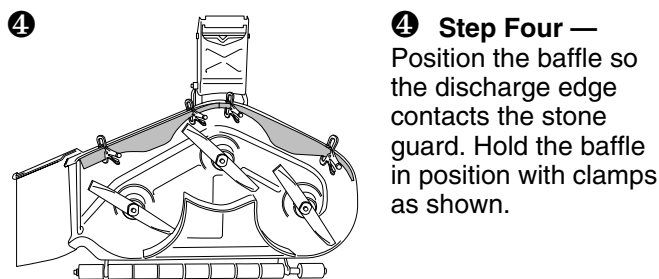
Do not handle the sharp mower blades with bare hands. Careless or improper handling of blades may result in serious injury.



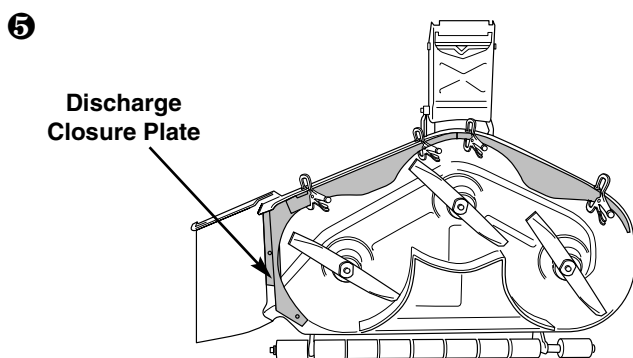
③ Step Three — Install the Mulching Blades with tabs pointing up towards the deck. Use a wooden block to prevent blade rotation. **Torque each blade mounting capscrew to 50-70 ft. lbs. (67-95 N.m.)**

⚠ WARNING

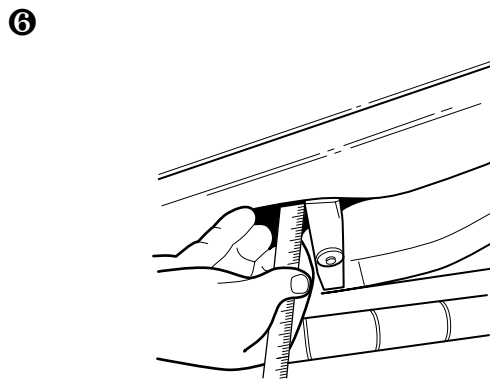
Blade mounting capscrews must each be installed with a hex washer and spring washer, then securely tightened. Torque blade mounting capscrew to 45-55 ft. lbs. (61-75 N.m.)



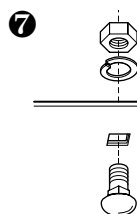
④ Step Four — Position the baffle so the discharge edge contacts the stone guard. Hold the baffle in position with clamps as shown.



⑤ Step Five — Position the Discharge Closure Plate at the discharge opening of the mower deck, inserting the tab into the baffle. Hold the plate in position with clamps as shown.

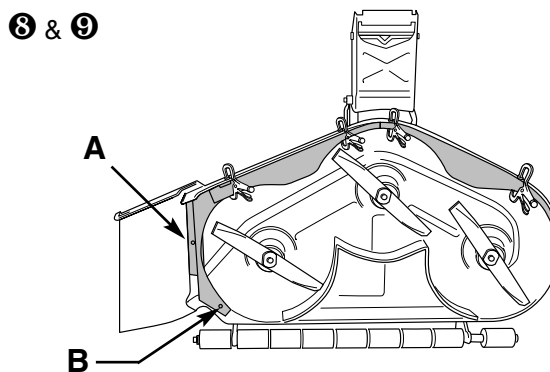


⑥ Step Six — Adjust the baffle and closure plate vertically so that the cutting tips of the blade are even above the edge of the baffle and closure plate edges as shown above.



⑦ Step Seven — Attach the baffle with the carriage bolts, lockwashers, and hex nuts as shown. (Carriage bolt head must be on the *INSIDE* of the mower deck.) Tighten the nuts securely, and remove the clamps.

⑧ Step Eight — Locate the two holes in the closure plate as shown by positions "A" and "B" in the illustration below. Using an 11/32" drill bit, drill a hole at each of these locations. Use a file to remove burrs around the holes.



⑨ Step Nine — Attach the closure plate with phillips screws, lockwashers, and nuts as shown above. ("A" is inserted from the top of the deck. "B" is inserted from the bottom of the closure plate/deck.) Tighten the nuts securely and remove the clamps.