



Parts Manual



Hydro Cut Series Walk-Behind Mowers

13HP Product

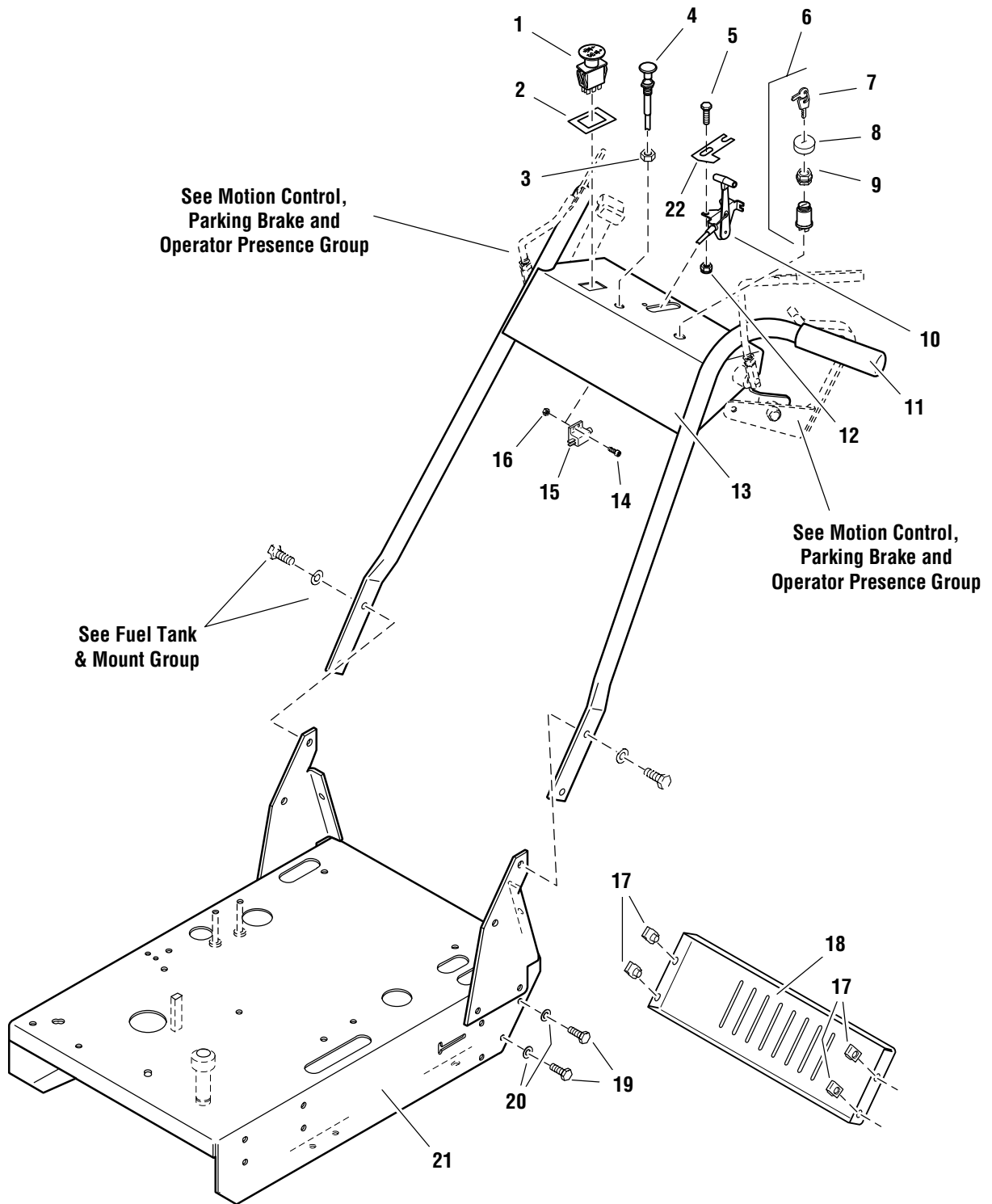
Mfg. No.	Description
1694562	Hydro Cut, 13HP Kawasaki, 32 inch (CE)

PRODUCT COMPONENTS	PAGES
Engine Deck & Handle Bars Group	4
Engine, PTO & Deck Drive Idler Group	6
Transaxle, Mount & Drive Idler Group	8
Transaxle SERVICE PARTS	10
Controls Group	12
Electrical Group	14
Fuel Tank Group	16
Fuel Tank Supply Group	18
Wheel & Tire Group	20
Decals - Brand, Model, Safety & Instruction	22
32 inch Mower Deck - Frame, Caster & Shield	24
32 inch Mower Deck - Height Adjustment	26
32 inch Mower Deck - Housing, Arbors & Blades	28
Torque Specification Chart	Inside Back Cover

Engine Deck & Handle Bars Group

FI0031

NOTE: Unless noted otherwise,
use the standard hardware torque
specification chart.



The above parts group applies to the following Mfg. Nos.:
1694562 - Hydro Cut

Engine Deck & Handle Bars Group

REF NO	PART NO.	QTY.	DESCRIPTION
1	5022180	1	SWITCH, PTO
2	5022222	1	SWITCH RETAINER RING
3	5025035	1	NUT, Hex, 3/8-24
4	5046501	1	CABLE, Choke Control
5	50250106	2	CAPSCREW, Hex Head, 1/4-20 x 3/4
6	5021842	1	SWITCH, Ignition, Complete (Includes Ref 7 - 9)
7	5022789	1	KEY, Ignition, Molded (set of 2)
8	5022790	1	COVER
9	5022791	1	PLASTIC NUT
10	5047629	1	CABLE, Throttle Control
11	5021841	2	FOAM GRIP
12	5025095	2	NUT, Hex Nylon Lock, 1/4-20
13	503847905	1	HANDLE BAR ASSEMBLY, (Orange)
14	50251794	2	SCREW, Phillips Head, #10-24 x 1/2
15	5021769	1	SWITCH, NC
16	5025029	2	NUT, Hex, #10-24
17	5022308	4	BODY CLIP, 5/16-18
18	503847735	1	REAR SHIELD, (Orange)
19	50250116	4	CAPSCREW, Hex Head, 5/16-18 x 3/4
20	5025155	4	WASHER, 5/16
21	503848230	1	ENGINE DECK ASSEMBLY, (Orange)
22	5048474	1	THROTTLE STOP PLATE

Footnotes

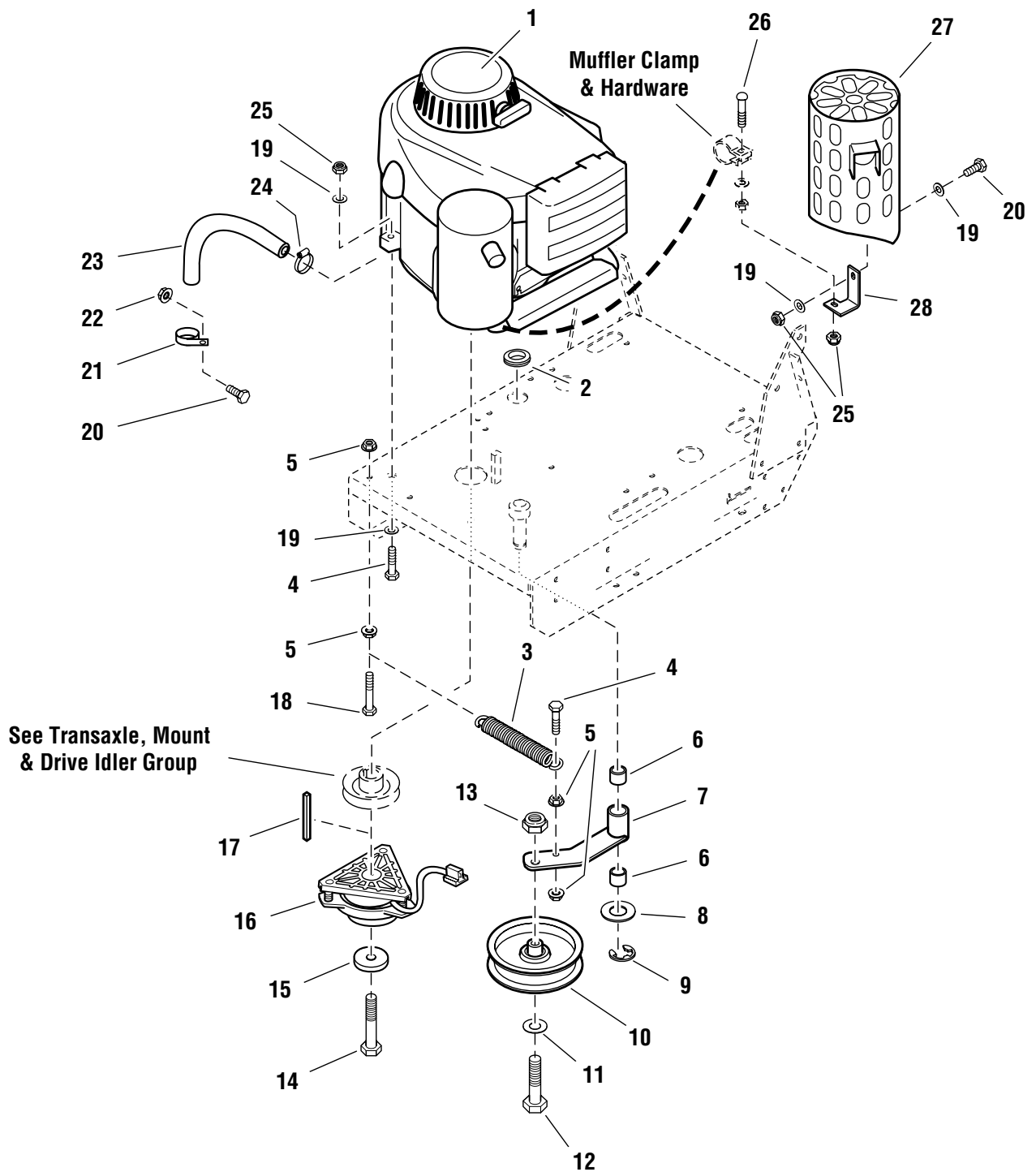
The above parts group applies to the following Mfg. Nos.:

1694562 - Hydro Cut

Engine, PTO & Deck Drive Idler Group

FI0032

NOTE: Unless noted otherwise,
use the standard hardware torque
specification chart.



The above parts group applies to the following Mfg. Nos.:
1694562 - Hydro Cut

Engine, PTO & Deck Drive Idler Group

REF NO	PART NO.	QTY.	DESCRIPTION
1	*	1	ENGINE, 13HP Kawasaki, Model FH381V
1	50211783	1	FUEL FILTER
1	50213341	1	OIL FILTER (49065-2078)
1	*	1	PRE-CLEANER (11013-7016)
1	*	1	AIR FILTER (11013-7017)
1	*	1	MUFFLER (49070-7002)
1	*	1	EXHAUST MANIFOLD (18088-7001)
1	*	1	MANIFOLD HEAT SHIELD (13271-7022)
1	*	2	EXHAUST MANIFOLD GASKET (11060-7021)
1	*	1	RECOIL ASSEMBLY, Complete (49088-7001)
2	5021379	1	GROMMET
3	5021103	1	SPRING, Extension
4	502501112	5	CAPSCREW, Hex Head, 5/16-18 x 1-1/2
5	5025139	4	NUT, Hex Serrated Flange, 5/16-18
6	5020876B	2	BUSHING, Brass
7	503847661	1	DECK DRIVE IDLER ARM, (Orange)
8	5025160	1	WASHER, 3/4
9	5020863	1	C-CLIP
10	5021369	1	IDLER PULLEY
11	5025158	1	WASHER, 1/2
12	502501820	1	CAPSCREW, Hex Head, 1/2-20 x 2-1/2
13	5025098	1	NUT, Hex Nylon Lock, 1/2-20
14	5047632	1	CRANKSHAFT BOLT, 7/16 x 2-3/4
15	5042132	1	CLUTCH RETAINER
16	1717664	1	ELECTRIC CLUTCH
17	50504073	1	KEY, 1/4 Sq. x 2
18	502501118	1	CAPSCREW, Hex Head, 5/16-18 x 2-1/4
19	5025155	7	WASHER, 5/16
20	50250116	2	CAPSCREW, Hex Head, 5/16-18 x 3/4
21	5023173	1	CLAMP
22	5025127	1	NUT, Hex Serrated Flange, 5/16-18
23	5050857105	1	HOSE, 10-1/2 inch (oil drain)
24	5021392	1	CLAMP, #6 Hose
25	5025057	6	NUT, Hex Nylon Lock, 5/16-18
26	502514614	1	CARRIAGE BOLT, 5/16-18 x 1-3/4
27	502849338	1	MUFFLER GUARD
28	502849340	1	BRACKET

Footnotes

* See your local Kawasaki engine dealer for parts & service.

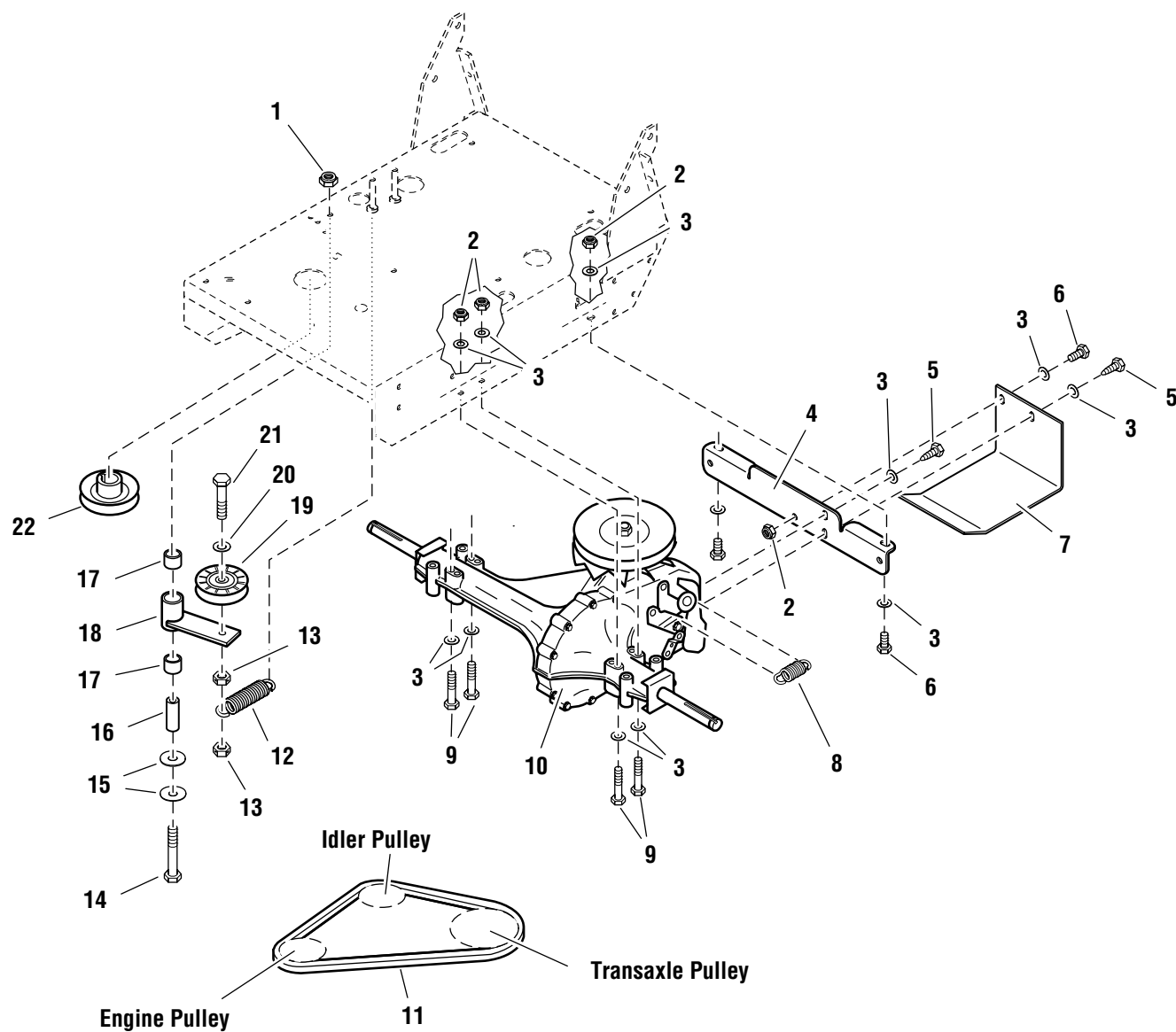
The above parts group applies to the following Mfg. Nos.:

1694562 - Hydro Cut

Transaxle, Mount & Drive Idler Group

FI0033

NOTE: Unless noted otherwise,
use the standard hardware torque
specification chart.



The above parts group applies to the following Mfg. Nos.:
1694562 - Hydro Cut

Transaxle, Mount & Drive Idler Group

REF NO	PART NO.	QTY.	DESCRIPTION
1	5025096	1	NUT, Hex Nylon Lock, 3/8-16
2	5025057	7	NUT, Hex Nylon Lock, 5/16-18
3	5025155	12	WASHER, 5/16
4	503847582	1	TRANSAXLE BRACE, (Orange)
5	50250596	2	CAPSCREW, Hex Head, Self-Tapping, 5/16-18 x 3/4
6	50250116	3	CAPSCREW, Hex Head, 5/16-18 x 3/4
7	503848312	1	SKID PLATE, (Orange)
8	5022967	1	HYDRO RETURN SPRING
9	502501124	4	CAPSCREW, Hex Head, 5/16-18 x 3
10	5022905	1	HYDROSTATIC TRANSAXLE
11	5023058	1	BELT, Drive
12	5020807	1	SPRING, Extension
13	5025100	2	NUT, Hex Side Lock, 3/8-16
14	502501324	1	CAPSCREW, Hex Head, 3/8-16 x 3
15	5025165	2	WASHER, Fender, 3/8
16	5047716	1	SPACER
17	5020876B	2	BUSHING, Brass
18	503847717	1	TRANSAXLE IDLER ARM, (Orange)
19	5043627	1	IDLER PULLEY ASSEMBLY
20	5025156	1	WASHER, 3/8
21	502501316	1	CAPSCREW, Hex Head, 3/8-16 x 2
22	5047914	1	TRANSAXLE DRIVE PULLEY

Footnotes

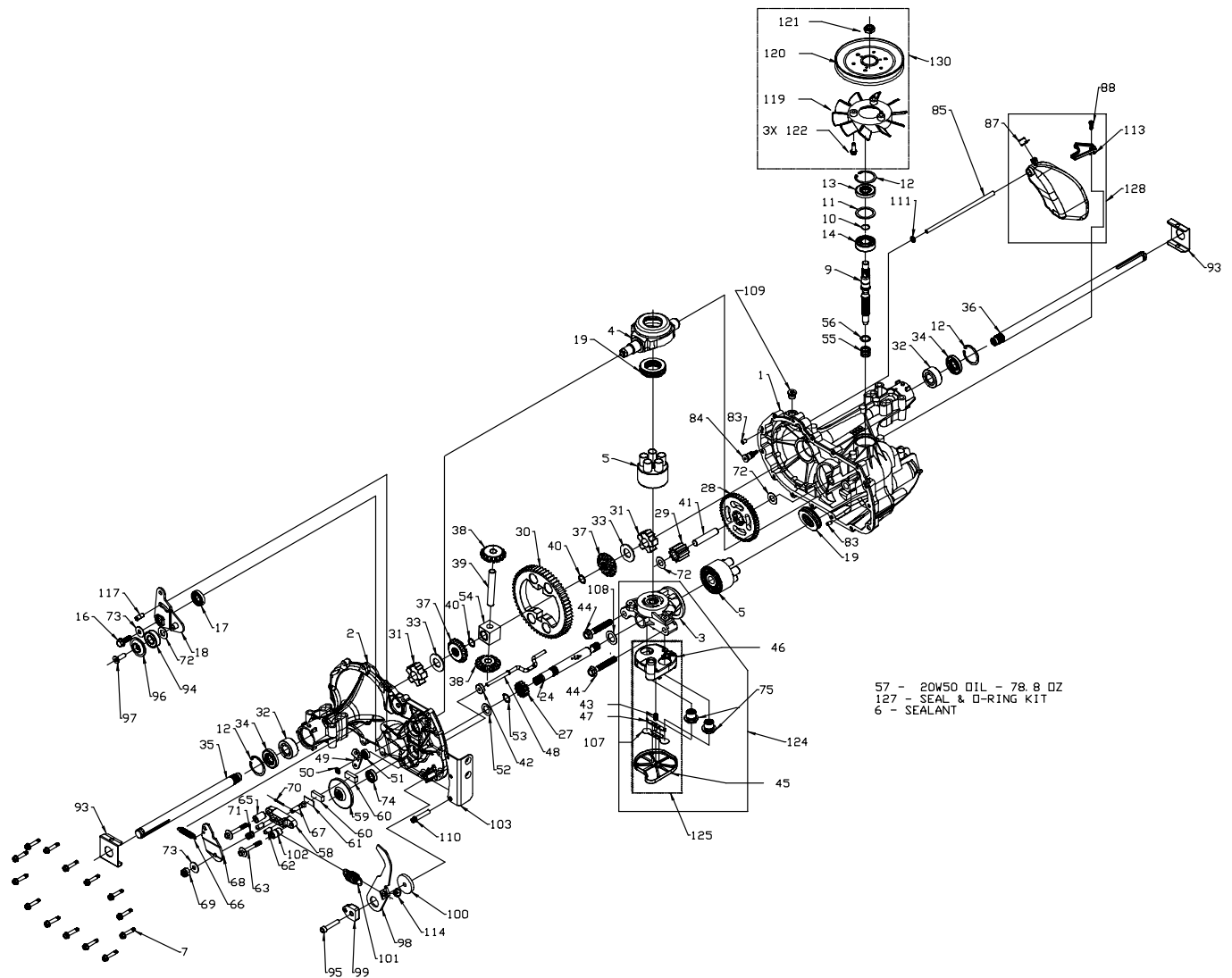
The above parts group applies to the following Mfg. Nos.:

1694562 - Hydro Cut

Transaxle SERVICE PARTS

NOTE: Unless noted otherwise,
use the standard hardware torque
specification chart.

5022905



The above parts group applies to the following Mfg. Nos.:
1694562 - Hydro Cut

Transaxle SERVICE PARTS

REF NO	PART NO.	QTY.	DESCRIPTION
6	50229051	10.5	SEALANT
9	50229052	1	SHAFT, INPUT
10	50229053	1	RING - RETAINING
11	50229054	1	SPACER
12	50229055	3	RING - RETAINING
14	50229056	1	BALL BEARING
32	50229057	2	OUTBOARD SLEEVE BEARING
35	50229058	1	AXLE SHAFT - RH
36	50229059	1	AXLE SHAFT - LH
55	502290510	1	SPRING - HELICAL COMPRESSION
56	502290511	1	WASHER
57	502290512	78.8	20W-50 OIL
101	5022967	1	HYDRO RETURN SPRING
119	502290513	1	FAN, 6", 10 BLADE
128	502290514	1	EXPANSION TANK KIT
130	502290515	1	FAN/PULLEY KIT (includes Ref. 119)

Footnotes

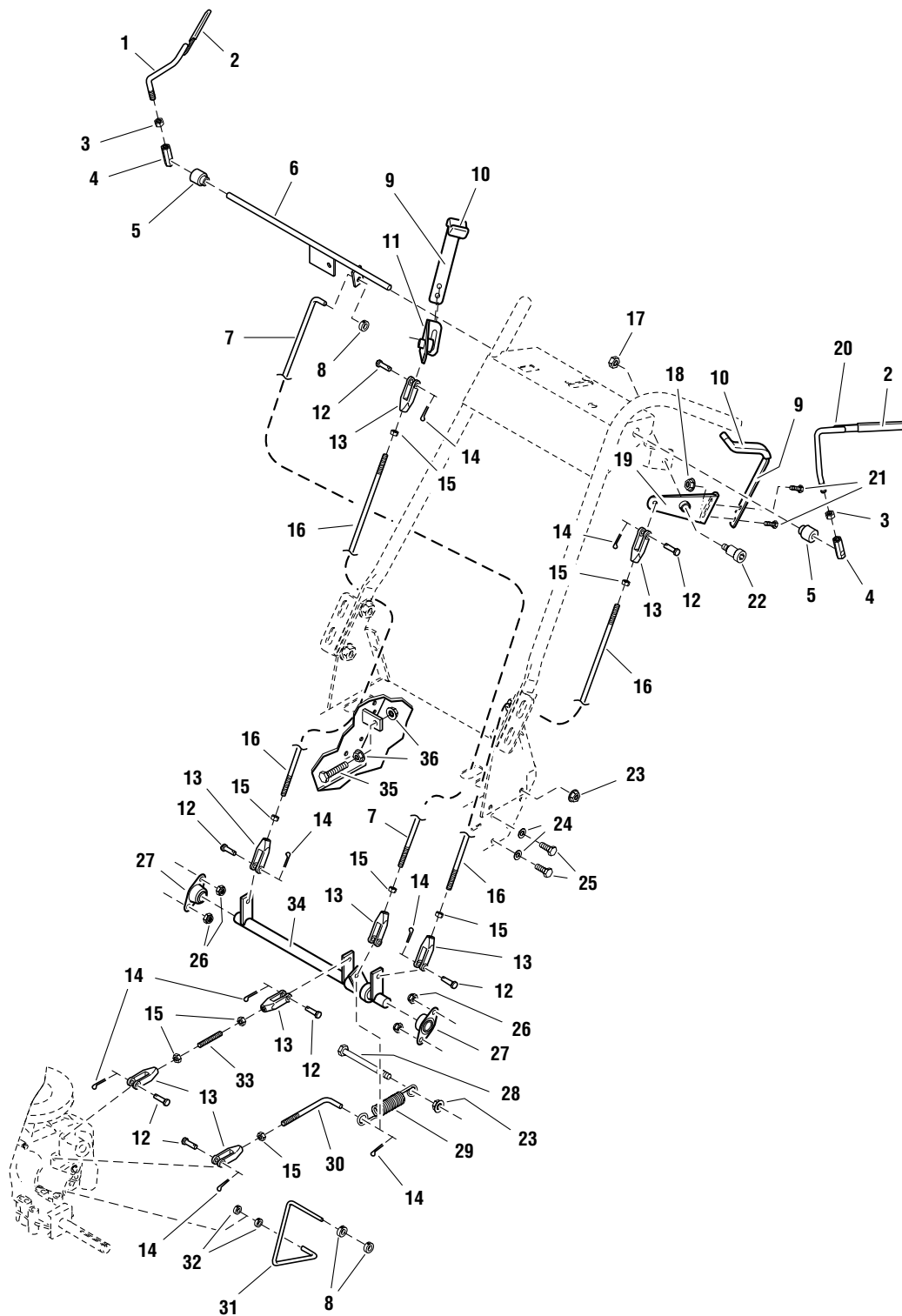
The above parts group applies to the following Mfg. Nos.:

1694562 - Hydro Cut

Controls Group

FI0034

NOTE: Unless noted otherwise,
use the standard hardware torque
specification chart.



The above parts group applies to the following Mfg. Nos.:
1694562 - Hydro Cut

Controls Group

REF NO	PART NO.	QTY.	DESCRIPTION
1	503849175	1	OPERATOR PRESENCE HANDLE - RH, (Orange)
2	5021490	2	VINYL GRIP
3	5025034	2	NUT, Hex, 3/8-16
4	5043417	2	ADJUSTER LINKAGE
5	5045943	2	SHOULDER SPACER
6	5047723	1	SWITCH ROD
7	5048327	1	BRAKE ROD
8	5020047	3	COLLAR, Set, 5/16
9	503848547	2	THUMB CONTROL LEVER, Complete, (Orange), (Includes Ref No. 10)
10	5025510	2	FOAM GRIP
11	503848544	1	PIVOT CONTROL - RH, (Orange)
12	50252138	7	PIN, Clevis, 5/16 x 1
13	5020979	8	CLEVIS, Plastic, 5/16-24
14	50252016	8	PIN, Cotter
15	5025033	8	NUT, Hex, 5/16-24
16	5047642	2	THUMB CONTROL ROD
17	5025100	2	NUT, Hex Side Lock, 3/8-16
18	5025126	4	NUT, Hex Serrated Flange, 1/4-20
19	503848545	1	PIVOT CONTROL - LH, (Orange)
20	503849176	1	OPERATOR PRESENCE HANDLE - LH, (Orange)
21	50250106	4	CAPSCREW, Hex Head, 1/4-20 x 3/4
22	5025223	2	SHOULDER BOLT, 1/2 x 1
23	5025128	2	NUT, Hex Serrated Flange, 3/8-16
24	5025155	4	WASHER, 5/16
25	50250116	4	CAPSCREW, Hex Head, 5/16-18 x 3/4
26	5025057	4	NUT, Hex Nylon Lock, 5/16-18
27	5021098	2	BEARING, Flange
28	502501332	1	CAPSCREW, Hex Head, 3/8-16 x 4
29	5049352	1	SPRING, Extension
30	5048328	1	BRAKE LINKAGE ROD
31	5047732	1	DUMP VALVE ROD
32	5022481	2	COLLAR, Set, 1/4
33	5047740	1	LINK STUD
34	503847697	1	CONTROL SHAFT ASSEMBLY, (Orange)
35	502505514	1	CAPSCREW, Hex Head, TFL, 5/16-18 x 1-3/4
36	5025127	2	NUT, Hex Serrated Flange, 5/16-18

Footnotes

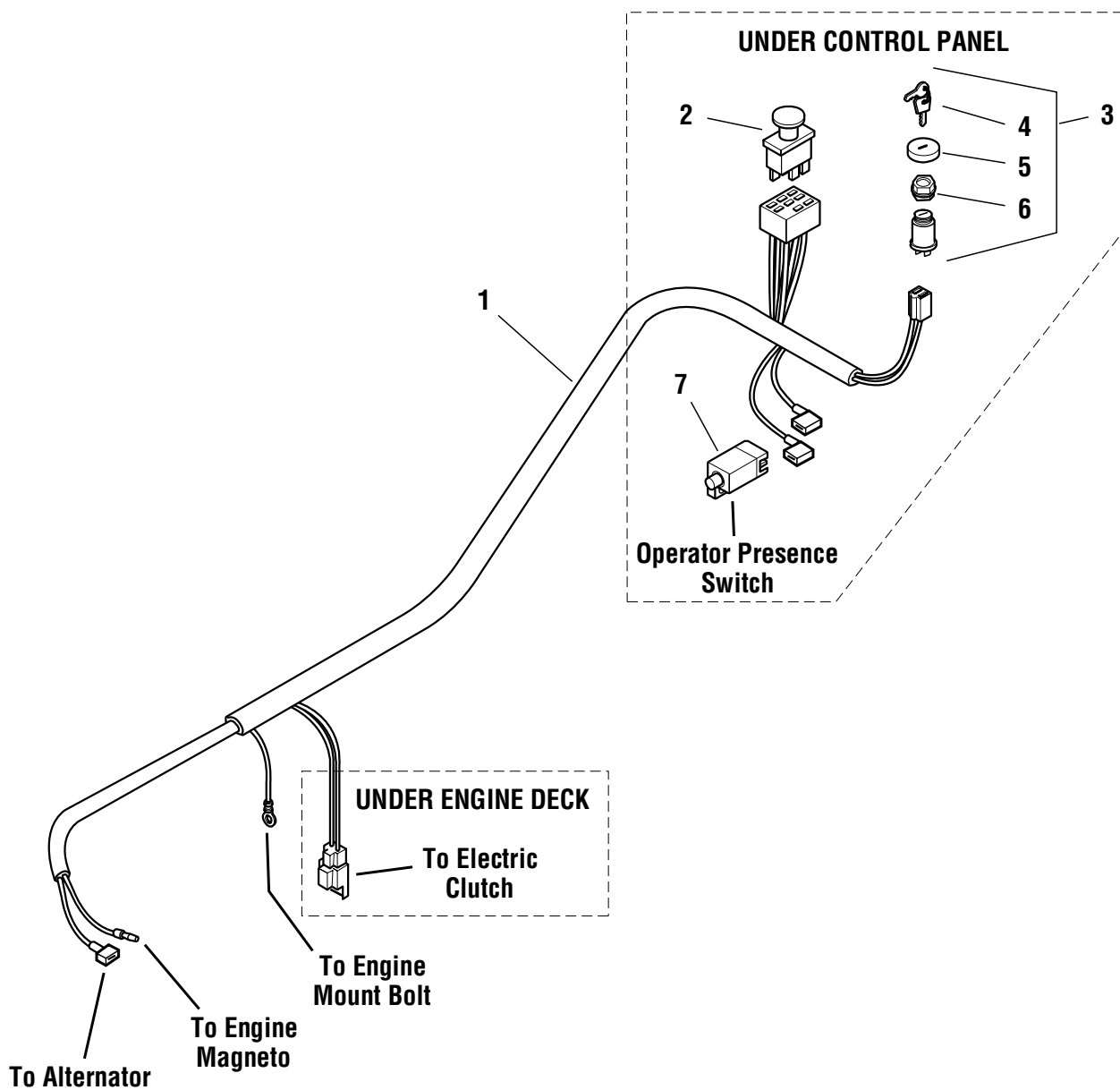
The above parts group applies to the following Mfg. Nos.:

1694562 - Hydro Cut

Electrical Group

FI0038

NOTE: Unless noted otherwise,
use the standard hardware torque
specification chart.



The above parts group applies to the following Mfg. Nos.:

1694562 - Hydro Cut

Electrical Group

REF NO	PART NO.	QTY.	DESCRIPTION
1	5047772	1	WIRE HARNESS
2	5022180	1	SWITCH, PTO
3	5021842	1	SWITCH, Ignition, Complete (Includes Ref No. 4-6)
4	5022789	1	KEY, Ignition, Molded (set of 2)
5	5022790	1	COVER
6	5022791	1	PLASTIC NUT
7	5021769	1	SWITCH, NC

Footnotes

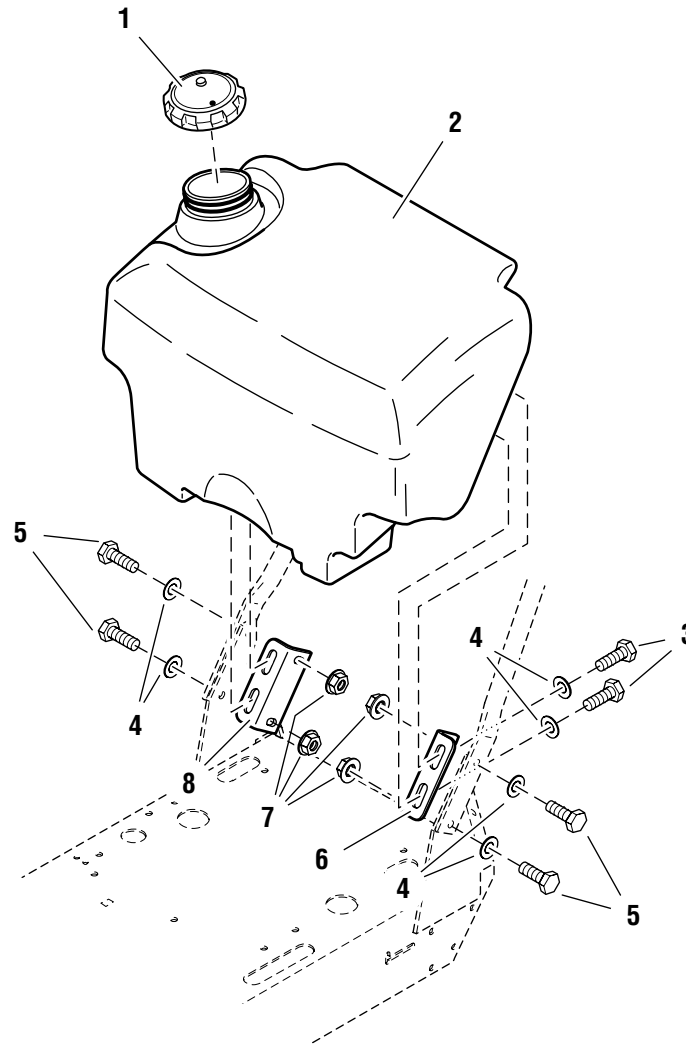
The above parts group applies to the following Mfg. Nos.:

1694562 - Hydro Cut

Fuel Tank Group

NOTE: Unless noted otherwise,
use the standard hardware torque
specification chart.

FI0035



The above parts group applies to the following Mfg. Nos.:

1694562 - Hydro Cut

Fuel Tank Group

REF NO	PART NO.	QTY.	DESCRIPTION
1	5022158	1	FUEL TANK CAP
2	5048149	1	FUEL TANK
3	50250136	4	CAPSCREW, Hex Head, 3/8-16 x 3/4
4	5025156	8	WASHER, 3/8
5	502501310	4	CAPSCREW, Hex Head, 3/8-16 x 1-1/4
6	503848342	1	FUEL TANK MOUNT - LH, (Orange)
7	5025128	4	NUT, Hex Serrated Flange, 3/8-16
8	503848343	1	FUEL TANK MOUNT - RH, (Orange)

Footnotes

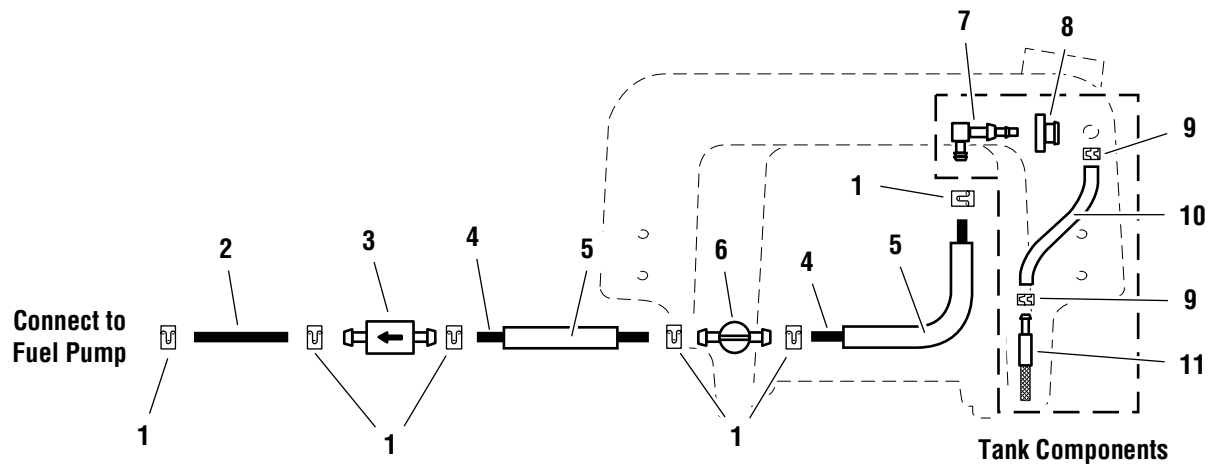
The above parts group applies to the following Mfg. Nos.:

1694562 - Hydro Cut

Fuel Tank Supply Group

FI0036

NOTE: Unless noted otherwise,
use the standard hardware torque
specification chart.



The above parts group applies to the following Mfg. Nos.:
1694562 - Hydro Cut

Fuel Tank Supply Group

REF NO	PART NO.	QTY.	DESCRIPTION
1	5020835	6	CLAMP, Hose
2	50508317	1	HOSE, 7 inch (supplied with engine)
3	50211783	1	FUEL FILTER
4	505083119	2	HOSE, 19-1/2 inch
5	505083318	2	WIRE LOOM, 18 inch
6	5021235	1	VALVE, FUEl Shut-Off
7	5023061	1	ELBOW FITTING
8	1726400	1	GROMMET
9	5023069	2	HOSE CLAMP
10	505092520	1	HOSE, 20 inch
11	5023067	1	SCREEN FITTING

Footnotes

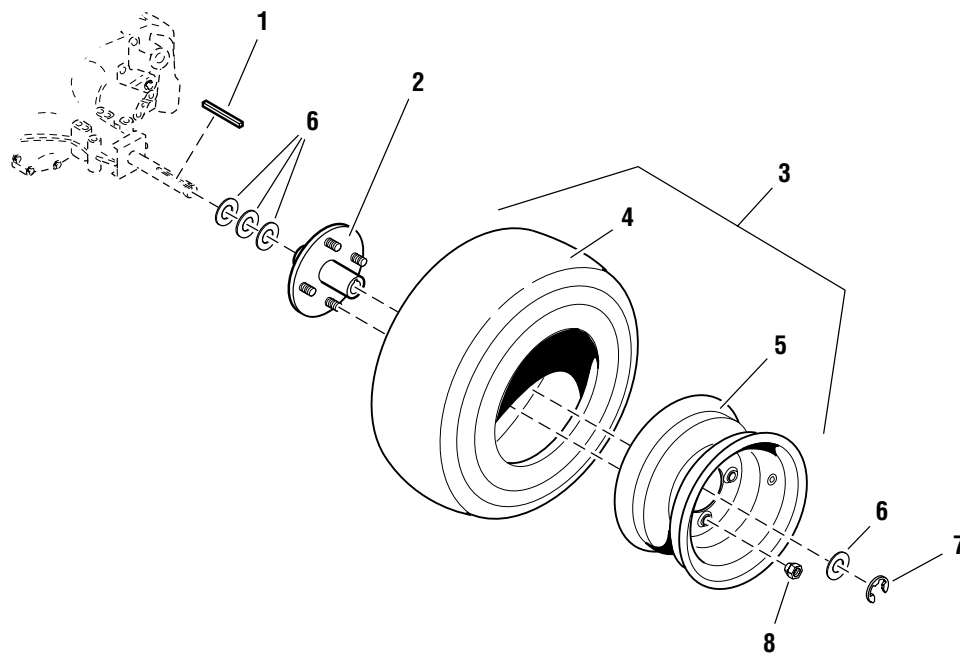
The above parts group applies to the following Mfg. Nos.:

1694562 - Hydro Cut

Wheel & Tire Group

FI0037

NOTE: Unless noted otherwise,
use the standard hardware torque
specification chart.



The above parts group applies to the following Mfg. Nos.:

1694562 - Hydro Cut

Wheel & Tire Group

REF NO	PART NO.	QTY.	DESCRIPTION
1	5048409	2	KEY, 3/16
2	5020792S	2	DRIVE HUB
3	5023104	2	WHEEL & TIRE ASSEMBLY, 16 x 6.5 x 8, Complete (Includes Ref 4 & 5)
4	50231042	2	TIRE, 16. x 6.5 x 8
5	50231041	2	WHEEL ASSEMBLY, 8 x 5.38
6	50255203	8	SHIM
7	5020863	2	C-CLIP
8	5020601	8	LUG NUT

Footnotes

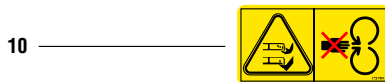
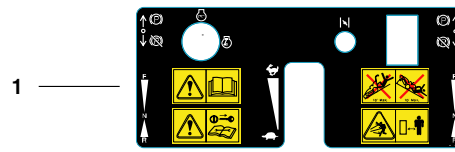
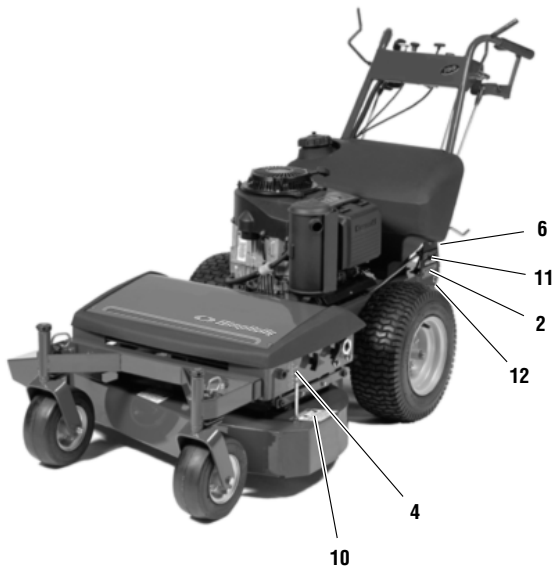
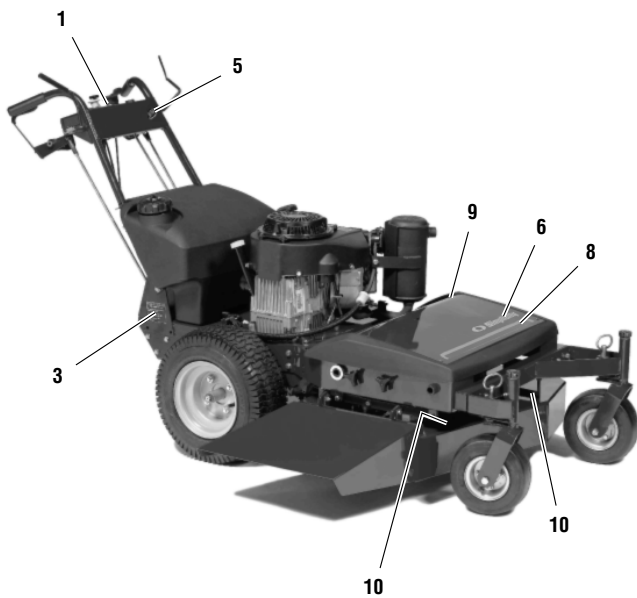
The above parts group applies to the following Mfg. Nos.:

1694562 - Hydro Cut

Decals - Brand, Model, Safety & Instruction

FI0039

NOTE: Unless noted otherwise, use the standard hardware torque specification chart.



The above parts group applies to the following Mfg. Nos.:
 1694562 - Hydro Cut

Decals - Brand, Model, Safety & Instruction

REF NO	PART NO.	QTY.	DESCRIPTION
1	5049317	1	DECAL, Control Panel
2	5021818	1	DECAL, Warning Machine Climb
3	5048261	1	DECAL, Warning Explosive Fuel
4	5049318	1	DECAL, Deck Height, Pulley Position
5	5048228	1	DECAL, ICC
6	5047778	1	DECAL, Cut Height Adjust
7	1722551	1	DECAL, Simplicity, Blue & Silver, Icon
8	5048482	1	DECAL, Stripe, Blue and Grey
9	1704473	1	DECAL, Hot
10	1704277	1	DECAL, Danger, Chute In Place, Hand Under Deck
11	*	1	MODEL/SERIAL TAG (Not serviced)
12	*	1	DECAL, I.D. Plate

Footnotes

* Not a service part.

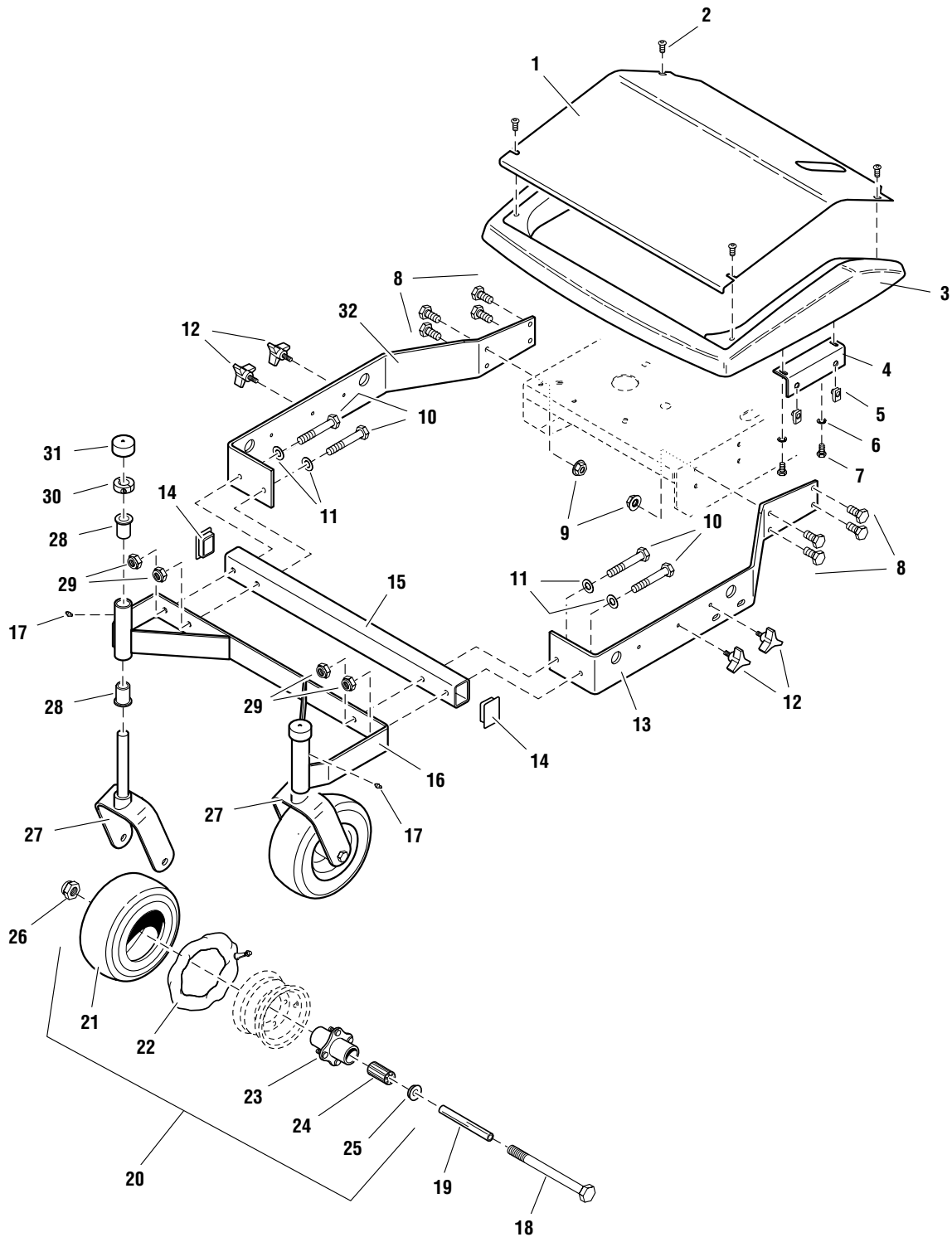
The above parts group applies to the following Mfg. Nos.:

1694562 - Hydro Cut

32 inch Mower Deck - Frame, Caster & Shield

FI0041

NOTE: Unless noted otherwise,
use the standard hardware torque
specification chart.



The above parts group applies to the following Mfg. Nos.:
1694562 - Hydro Cut

32 inch Mower Deck - Frame, Caster & Shield

REF NO	PART NO.	QTY.	DESCRIPTION
1	503848145	1	SHIELD INSERT, (Orange)
2	50252994	4	SCREW, Allen Head, 1/4-20 x 1/2
3	5048150	1	GUARD, Mower Deck
4	503848353	2	SHIELD MOUNT BRACKET, (Orange)
5	5022308	4	BODY CLIP, 5/16-18
6	5025169	4	LOCKWASHER, 1/4
7	50250106	4	CAPSCREW, Hex Head, 1/4-20 x 3/4
8	50250138	8	CAPSCREW, Hex Head, 3/8-16 x 1
9	5025128	8	NUT, Hex Serrated Flange, 3/8-16
10	502501320	4	CAPSCREW, Hex Head, 3/8-16 x 2-1/2
11	5025156	4	WASHER, 3/8
12	5022319	4	KNOB
13	503847648	1	FRAME RAIL - LH, (Orange)
14	5022098	2	PLASTIC CAP
15	503848194	1	CROSS TUBE, (Orange)
16	503848969	1	CASTER MOUNT FRAME, Complete, (Orange) (Includes Ref. No. 17 & 28)
17	5020095	2	GREASE FITTING, 1/4-28
18	502501744	2	CAPSCREW, Hex Head, 1/2-13 x 5-1/2
19	5041657	2	AXLE, Caster
20	5021181S	2	WHEEL & TIRE ASSEMBLY, Silver, 9 x 3.5 x 4, Complete (Includes Ref. No. 21 - 25)
21	50211811	2	TIRE, Front, 9 x 3.5 x 4
22	50211812	2	TUBE, for 9 x 3.5 x 4 Tire
23	5021181S3	2	HUB & BEARING ASSEMBLY, Complete, Silver (Includes Ref. No. 24 & 25)
24	5021182	2	BEARING, Roller (1 per tire)
25	5021043	4	RETAINER, Bearing (2 per tire)
26	5025056	2	NUT, Hex Nylon Lock, 1/2-13
27	503848172	2	CASTER YOKE, (Orange) (Use with Ref. No. 16, Part No. 503848969)
28	5020823	4	BUSHING, Flange
29	5025096	4	NUT, Hex Nylon Lock, 3/8-16
30	5010114	2	COLLAR, Split, 3/4
31	5023274	2	VINYL CAP
32	503847649	1	FRAME RAIL - RH, (Orange)

Footnotes

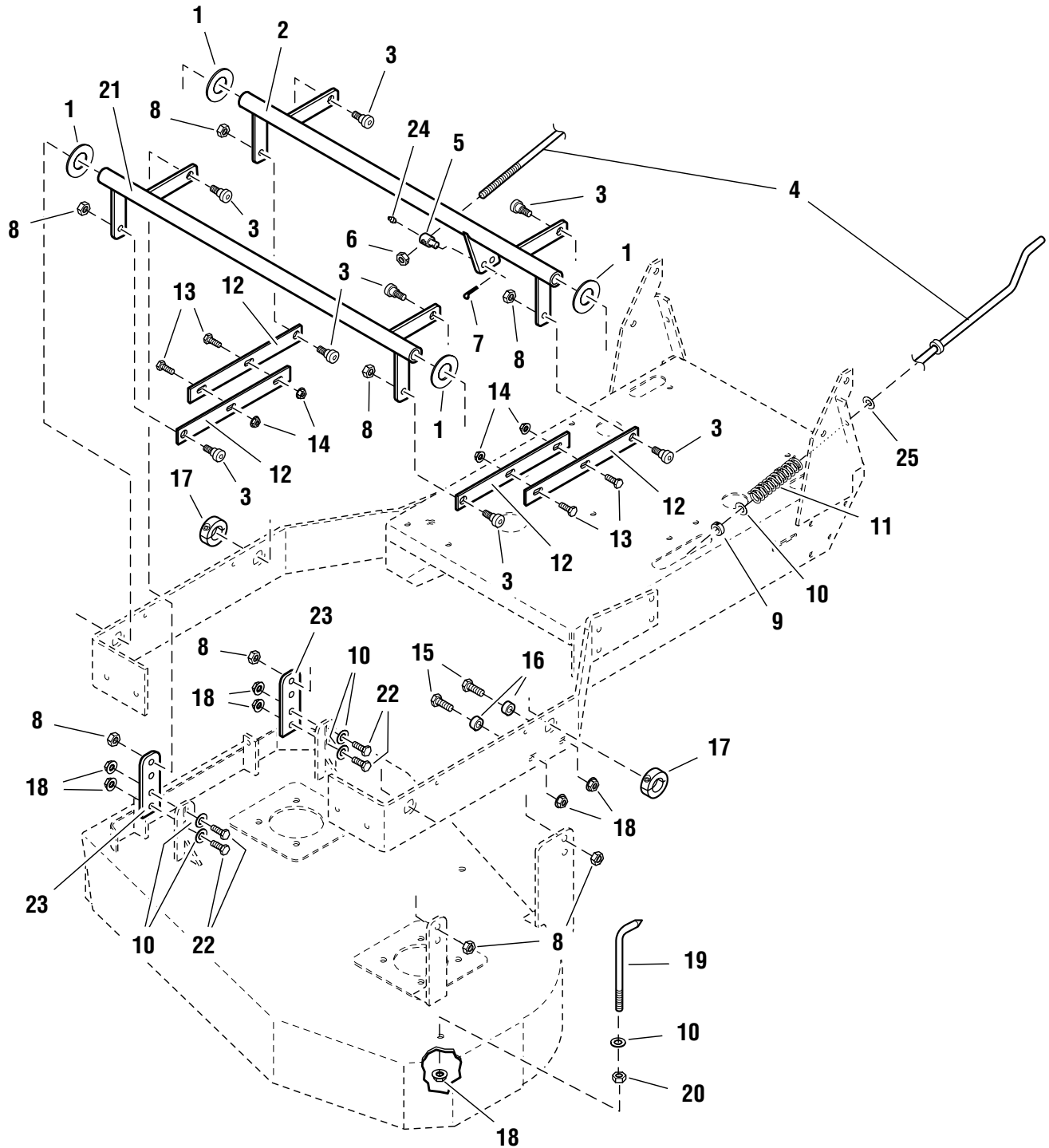
The above parts group applies to the following Mfg. Nos.:

1694562 - Hydro Cut

32 inch Mower Deck - Height Adjustment

FI0042

NOTE: Unless noted otherwise,
use the standard hardware torque
specification chart.



The above parts group applies to the following Mfg. Nos.:
1694562 - Hydro Cut

32 inch Mower Deck - Height Adjustment

REF NO	PART NO.	QTY.	DESCRIPTION
1	5025162	4	WASHER, 1 inch
2	503847682	1	DECK LIFT PIVOT - REAR, (Orange)
3	5025356	8	SHOULDER BOLT, 3/8-16 x 1/2 x 3/8
4	5047655	1	HEIGHT ADJUST ROD
5	5048526	1	LINKAGE ADJUSTER
6	5025100	1	NUT, Hex Side Lock, 3/8-16
7	50252016	1	PIN, Cotter
8	5025046	8	NUT, Hex Top Lock, 3/8-16
9	5010546	1	COLLAR, Set, 3/8
10	5025156	6	WASHER, 3/8
11	5022645	1	SPRING, Compression
12	503847710	4	DECK ADJUST LINK, (Orange)
13	50250118	4	CAPSCREW, Hex Head, 5/16-18 x 1
14	5025139	4	NUT, Hex Serrated Flange, 5/16-18
15	502501310	2	CAPSCREW, Hex Head, 3/8-16 x 1-1/4
16	5044933	2	SPACER
17	5048549	2	COLLAR, Double Split, 1 inch
18	5025128	7	NUT, Hex Serrated Flange, 3/8-16
19	5047737	1	CUT HEIGHT INDICATOR
20	5025034	1	NUT, Hex, 3/8-16
21	503847681	1	DECK LIFT PIVOT, Front, (Orange)
22	50250136	4	CAPSCREW, Hex Head, 3/8-16 x 3/4
23	503848439	2	HANGER PLATE, (Orange)
24	5020095	1	GREASE FITTING, 1/4-28
25	5048548	1	WASHER, Nylon, 3/8

Footnotes

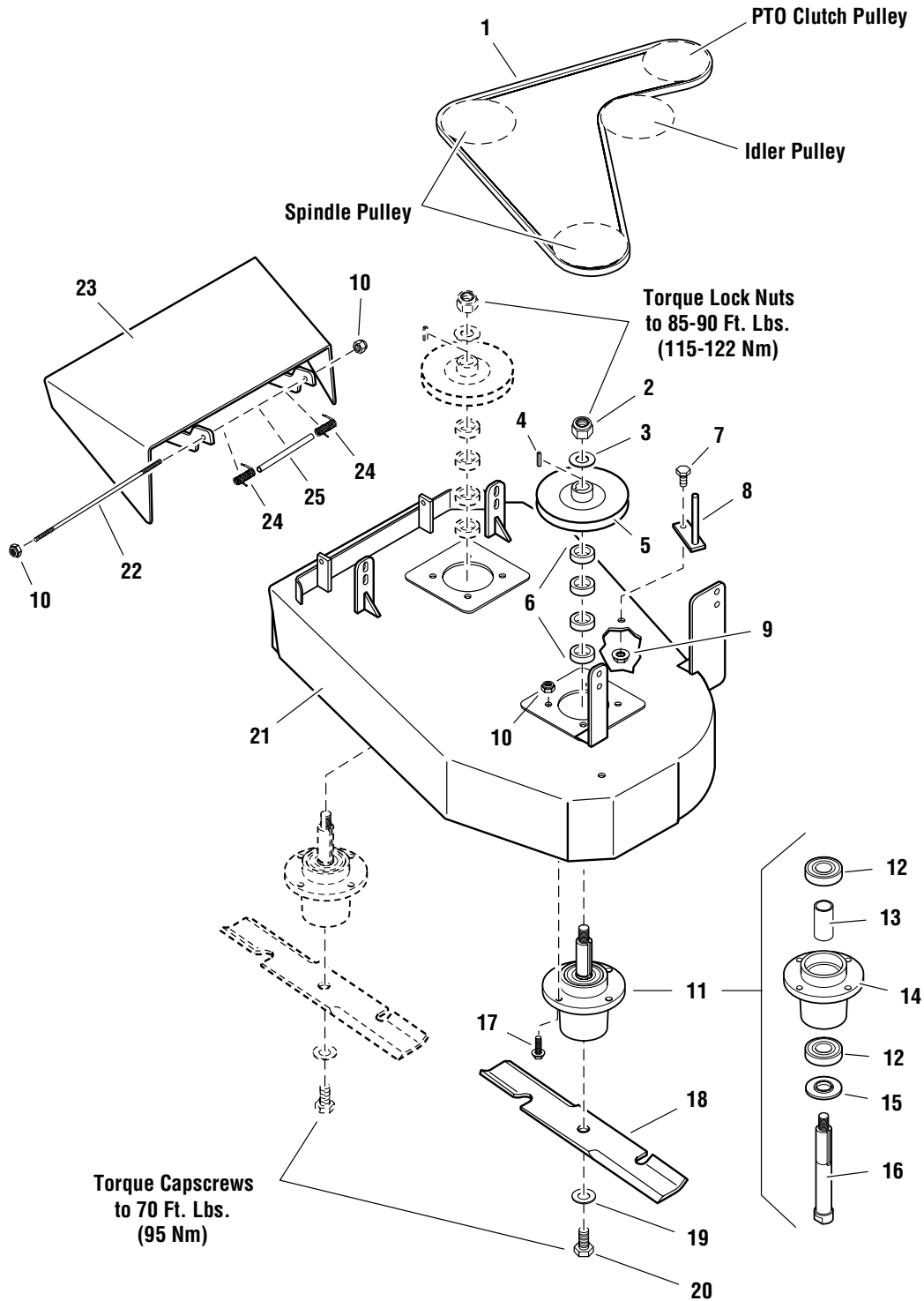
The above parts group applies to the following Mfg. Nos.:

1694562 - Hydro Cut

32 inch Mower Deck - Housing, Arbors & Blades

FI0040

NOTE: Unless noted otherwise,
use the standard hardware torque
specification chart.



The above parts group applies to the following Mfg. Nos.:
1694562 - Hydro Cut

32 inch Mower Deck - Housing, Arbors & Blades

REF NO	PART NO.	QTY.	DESCRIPTION
1	5022918	1	BELT, Arbor
2	5025319	2	NUT, Hex Nylon Lock, 5/8-18
3	5025318	2	WASHER, Spring, 5/8
4	50504071	2	KEY, 1/4 Square x 1
5	5047638	2	SPINDLE PULLEY
6	5047725	8	SPACER
7	50250138	1	CAPSCREW, Hex Head, 3/8-16 x 1
8	503847777	1	BELT GUIDE, (Orange)
9	5025126	1	NUT, Hex Serrated Flange, 3/8-16
10	5025057	10	NUT, Hex Nylon Lock, 5/16-18
11	5047640	2	SPINDLE ASSEMBLY, Complete (Includes Ref. No. 12-16)
12	50463635	4	BEARING, Ball
13	50463634	2	SPACER, Bearing
14	50463631	2	SPINDLE HOUSING
15	50463633	2	TRASH SHIELD
16	50476402	2	SPINDLE SHAFT
17	5023156	8	CAPSCREW, Hex Flange Head, 5/16-18 x 1-1/4
18	5020843	2	MOWER BLADE, 16-1/4
19	5025159	2	WASHER, USS, 5/8
20	502532014	2	CAPSCREW, Hex Head, 5/8-11 x 1-3/4
21	503847576	1	MOWER DECK HOUSING, (Orange)
22	5045914	1	CHUTE PIVOT ROD
23	503847724	1	DISCHARGE CHUTE, (Orange)
24	1723938	2	SPRING, Torsion
25	5045638	1	SPRING SPACER

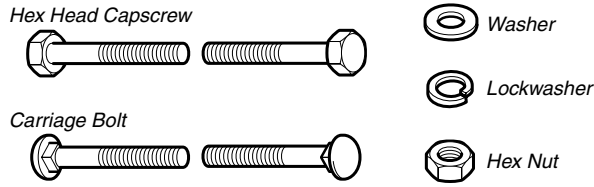
Footnotes

The above parts group applies to the following Mfg. Nos.:

1694562 - Hydro Cut

Hardware Identification & Torque Specifications

Common Hardware Types

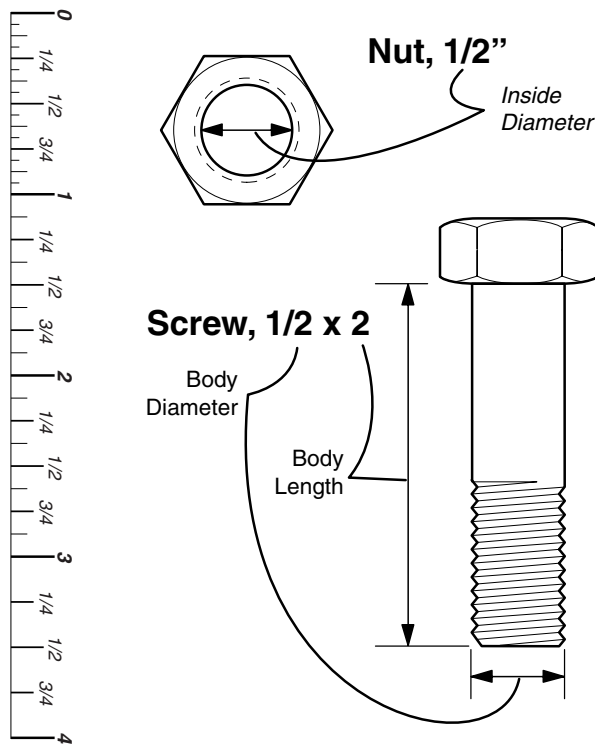


Standard Hardware Sizing

When a washer or nut is identified as 1/2", this is the *Nominal size*, meaning the *inside diameter* is 1/2 inch; if a second number is present it represents the *threads per inch*

When bolt or capscrew is identified as 1/2 - 16 x 2", this means the *Nominal size*, or *body diameter* is 1/2 inch; the second number represents the *threads per inch* (16 in this example, and the final number is the *body length* of the bolt or screw (in this example 2 inches long).

The guides and ruler furnished below are designed to help you select the appropriate hardware and tools.



Torque Specification Chart						
FOR STANDARD MACHINE HARDWARE (Tolerance ± 20%)						
Hardware Grade	No Marks SAE Grade 2		SAE Grade 5		SAE Grade 8	
	in/lbs ft/lbs	Nm.	in/lbs ft/lbs	Nm.	in/lbs ft/lbs	Nm.
8-32	19	2.1	30	3.4	41	4.6
8-36	20	2.3	31	3.5	43	4.9
10-24	27	3.1	43	4.9	60	6.8
10-32	31	3.5	49	5.5	68	7.7
1/4-20	66	7.6	8	10.9	12	16.3
1/4-28	76	8.6	10	13.6	14	19.0
5/16-18	11	15.0	17	23.1	25	34.0
5/16-24	12	16.3	19	25.8	27	34.0
3/8-16	20	27.2	30	40.8	45	61.2
3/8-24	23	31.3	35	47.6	50	68.0
7/16-14	30	40.8	50	68.0	70	95.2
7/16-20	35	47.6	55	74.8	80	108.8
1/2-13	50	68.0	75	102.0	110	149.6
1/2-20	55	74.8	90	122.4	120	163.2
9/16-12	65	88.4	110	149.6	150	204.0
9/16-18	75	102.0	120	163.2	170	231.2
5/8-11	90	122.4	150	204.0	220	299.2
5/8-18	100	136	180	244.8	240	326.4
3/4-10	160	217.6	260	353.6	386	525.0
3/4-16	180	244.8	300	408.0	420	571.2
7/8-9	140	190.4	400	544.0	600	816.0
7/8-14	155	210.8	440	598.4	660	897.6
1-8	220	299.2	580	788.8	900	1,244.0
1-12	240	326.4	640	870.4	1,000	1,360.0

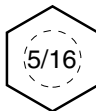
NOTES

- These torque values are to be used for all hardware excluding: locknuts, self-tapping screws, thread forming screws, sheet metal screws and socket head setscrews.
- Recommended seating torque values for locknuts:
 - for prevailing torque locknuts - use 65% of grade 5 torques.
 - for flange whizlock nuts and screws - use 135% of grade 5 torques.
- Unless otherwise noted on assembly drawings, all torque values must meet this specification.

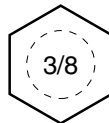
Wrench & Fastener Size Guide



1/4" Bolt or Nut
Wrench—7/16"



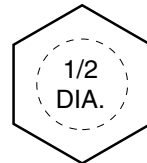
5/16" Bolt or Nut
Wrench—1/2"



3/8" Bolt or Nut
Wrench—9/16"



7/16" Bolt or Nut
Wrench (Bolt)—5/8"
Wrench (Nut)—11/16"



1/2" Bolt or Nut
Wrench—3/4"

Simplicity

MANUFACTURING, INC.
500 N. Spring Street / PO Box 997
Port Washington, WI 53074-0997 USA

www.simplicitymfg.com

© Copyright 2004 Simplicity Manufacturing, Inc.
All Rights Reserved. Printed In USA.

