
Simplicity®

**OWNER'S
MANUAL**

DUMP CART

MFG. NO. 085

SIMPLICITY MANUFACTURING COMPANY, INC.



SER. FORM - 177925
PRINTED IN U.S.A.

1328

ASSEMBLY INSTRUCTIONS

PACKING

The Dump Cart is delivered complete in one carton. The carton contains:

- 2 - Wheel & Tire Assembly
- 1 - Axle Assembly
- 1 - Tongue Assembly
- 1 - Box Pivot Assembly
- 1 - Frame Assembly
- 1 - Body Trailer w/End Gate
- 1 - Bag of Hardware

Should any shortages of the above items occur, advise by stating Packers Number listed on green packing slip, Part Number and Description of Items missing.

ASSEMBLY

1. Mount the two wheel and tire assemblies on the axle (1) as shown and secure with (2) 3/4" washers and (2) 3/16" x 1-1/2" cotter pins.
2. Mount the frame assembly (2) to the axle assembly and secure with (2) 5/16" x 4-5/8" long L-shaped pins and (2) spring clips (3). Be sure the axle curve is away from the ground. Bolt the frame assembly to the tongue assembly using 3/8"-16 n.c. x 2-1/4" long hex cap screws, 3/8" regular lockwashers and 3/8"-16 n.c. regular hex nuts (4). Be sure the front end of the tongue is lower than the rear.
3. Insert the box pivot assembly into the rear of the frame assembly as shown and secure with (2) 1/2" diameter x 1-1/2" long pins and spring clips (5). Place the dump box on its tail gate to attach the pivot box assembly. Place the (2) 3/8" long bushing in each arm of the pivot box assembly. Insert a 3/8"-16 n.c. x 1" long hex cap screw with a 3/8" washer under its head through the bushing and body trailer and secure with a 3/8" lock washer and 3/8"-16 n.c. full hex nut.
4. The box catch clevis is then bolted to the tongue. Place box catch clevis over the tongue as shown (7), insert the

OPERATION

Attach the cart tongue to the tractor with the remaining 2 in. long pin and spring clip.

The cart is designed to carry 1,000 lb. THE AXLE IS BENT UP SLIGHTLY IN THE CENTER TO COMPENSATE FOR HEAVY LOADS. With its patented dump feature the box can be unlatched without detaching from the tractor and turned completely upside down by tilting up and back to empty all contents without shoveling. The tail gate is removable by pulling it straight up.

MAINTENANCE

The grease fittings on the wheels require only occasional lubrication with general purpose automotive grease. Before greasing, wipe the fittings clean. Apply light oil frequently to all pivot points and the front latch.

3/8"-16 n.c. x 2-3/4" hex capscrew through the clevis and tongue from the side opposite the box catch handle. Place the box catch spring over the bolt end as shown and secure with (1) 3/8" plain washer and 3/8"-16 n.c. full lock hex nut. The box catch clevis should move freely - do not over-tighten. The larger hook of the box catch spring is then placed over the tongue and the smaller one against the box catch handle to hold the catch toward the rear of the dump cart.

5. The box guide plate and catch plate should now be installed (8). Place the box guide plate inside the dump box with the grooved end extending through the slot in the box floor. Position the box catch plate on the outside with the upturned end toward the box bottom and secure with (2) 3/8"-16 n.c. x 1" long hex capscrews, 3/8" lock washers and 3/8"-16 n.c. full hex nuts. The 3/8" diameter x 2" long pin and spring clip for attaching the dump cart to the power unit can then be inserted in the tongue yoke (9).

LUBRICATION

The dump cart has two standard size grease fittings, one on each wheel, which require occasional lubrication with general purpose automotive grease. Before lubricating, wipe each grease fitting with a rag to prevent grit and dirt from being carried into the bearings with the new grease. Lubricate all pivot points and the box catch clevis with SAE-10 oil frequently.

TIRES

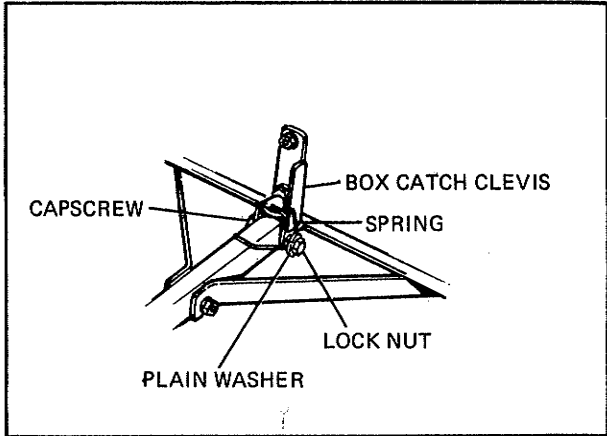
The tires of the dump cart are inflated for shipping with pressure in excess of the normal amount. For normal lawn use, deflate the tires until a pressure of 6-8 lbs. per square inch is reached. When carrying heavy loads, or when used with the vacuum collector, it will be necessary to increase this pressure to 14-16 lbs. per square inch to prevent damage to tires or wheels.

MFR'S. NO. 085 DUMP CART SPECIFICATIONS

CAPACITY	MATERIAL: Heavy Gauge Reinforced Steel
	WEIGHT: 1,000 Lbs.
	VOLUME: 7 cu. Ft. Struck 10 cu. Ft. Heaped
BOX SIZE	LENGTH: 39 Inches
	WIDTH: 26 Inches
	HEIGHT: 12 Inches
TIRES	TYPE: Pneumatic
	SIZE: 4.80/4.00 x 8
	SHIPPING WEIGHT: 112 Lbs.

BODY TRAILER W/END GATE

8



BOX PIVOT ASSEMBLY

5

4

AXLE BENT UPWARDS

6

FRAME ASSEMBLY

AXLE

TONGUE ASSEMBLY

WASHER & COTTER PIN

3

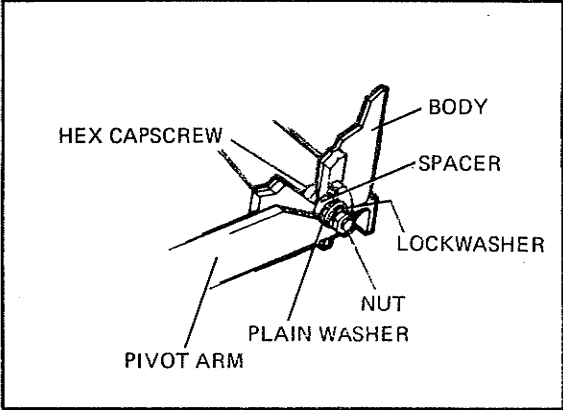
2

PIN & SPRING CLIP

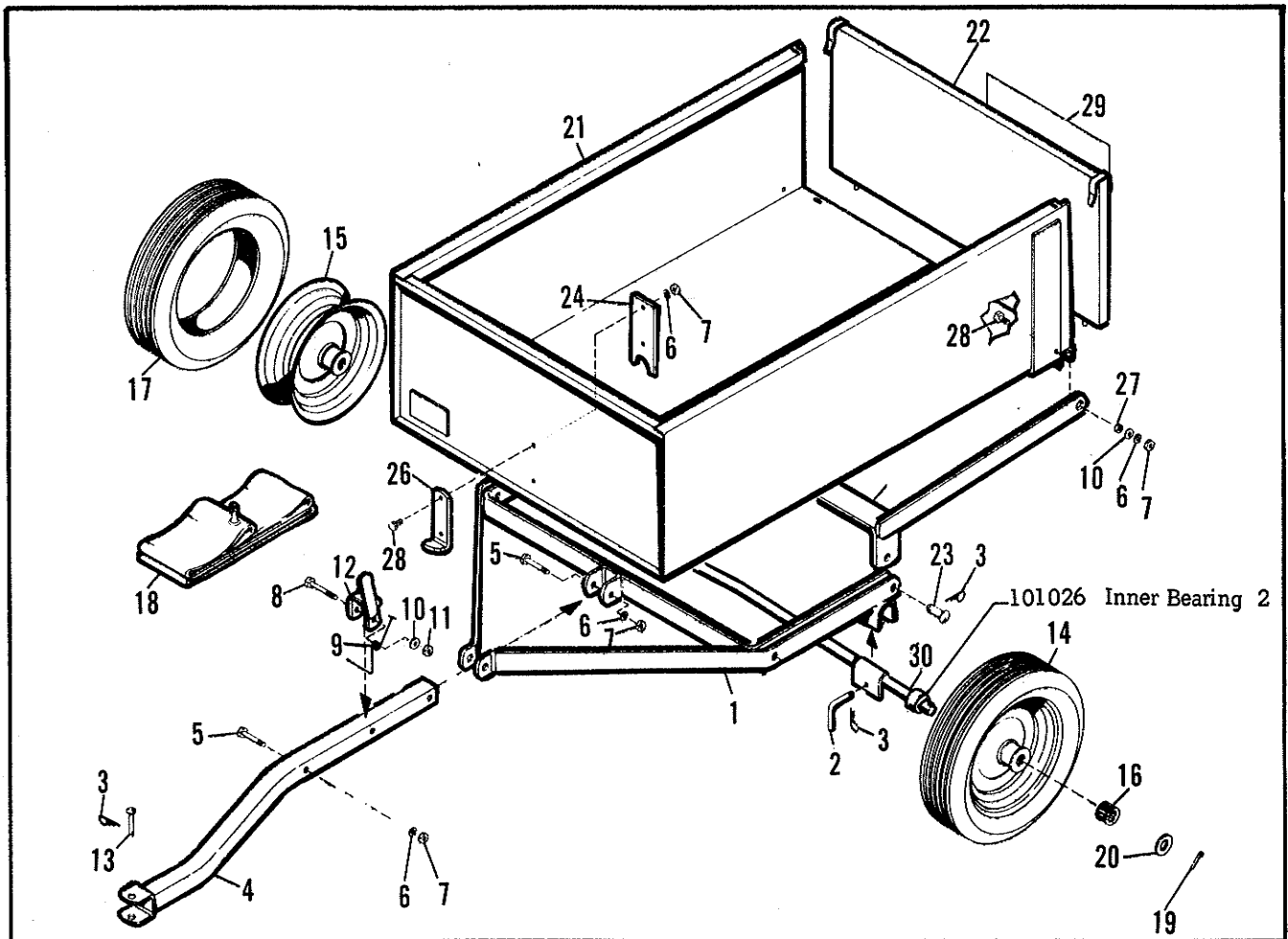
WHEEL & TIRE ASSEMBLY

1

9



NOTE: YOU WILL NOTICE THAT THE AXLE IS BENT SLIGHTLY IN THE CENTER. THIS BEND IS TO COMPENSATE FOR HEAVY LOADS IN THE CART. WHEN THE CART IS LOADED TO CAPACITY, THE AXLE STRAIGHTENS OUT SO THE WHEELS REMAIN VERTICAL UNDER LOAD.



Ref. No.	Part No.	Qty. Req.	Description
1	102035	1	Frame Assembly
2	8011204	2	Pin
3	8161045	5	Spring Clip
4	102037	1	Tongue Assembly
5	705003	2	Hex Capscrew
6	720002	6	Lock Washer 3/8"
7	717003	6	Hex Nut, Full 3/8"-16
8	715072	1	Hex Capscrew, 3/8"-16 x 2-3/4" lg.
9	102075	1	Torsion Spring
10	719001	3	Plain Washer 3/8"
11	717510	1	Hex Nut, Full 3/8"-16
12	102051	1	Box Catch Clevis Assembly
13	105249	1	Pin
14	170320	2	Wheel & Tire Assembly
15	170319	2	Wheel

Ref. No.	Part No.	Qty. Req.	Description
16	156316	2	Bearing
17	102052	2	Tire
18	153038	2	Tube
19	722007	2	Cotter Pin
20	719005	2	Plain Washer 3/4"
21	102002	1	Trailer Body
22	102003	1	End Gate
23	102004	2	Pivot Pin
24	102005	1	Box Guide Plate
25	102024	1	Box Pivot Assembly
26	102040	1	Box Catch Plate
27	8151076	2	Bushing
28	705005	4	Hex Capscrew 3/8"-16 x 1" lg.
29	153166	1	Decal
30	102027	1	Axle Assembly

SPECIFICATIONS SUBJECT TO CHANGE WITHOUT NOTICE