

Champion

Series Zero-Turn Riders & Mower Decks

18HP Tractors

Mfg. No.	Description
1694454	Champion, 18HP Zero-Turn Rider
1694458	Champion, 18HP Zero-Turn Rider (CE)

20HP Tractors

Mfg. No.	Description
1694455	Champion, 20HP Zero-Turn Rider
1694460	Champion, 20HP Zero-Turn Rider (CE)

Mower Decks

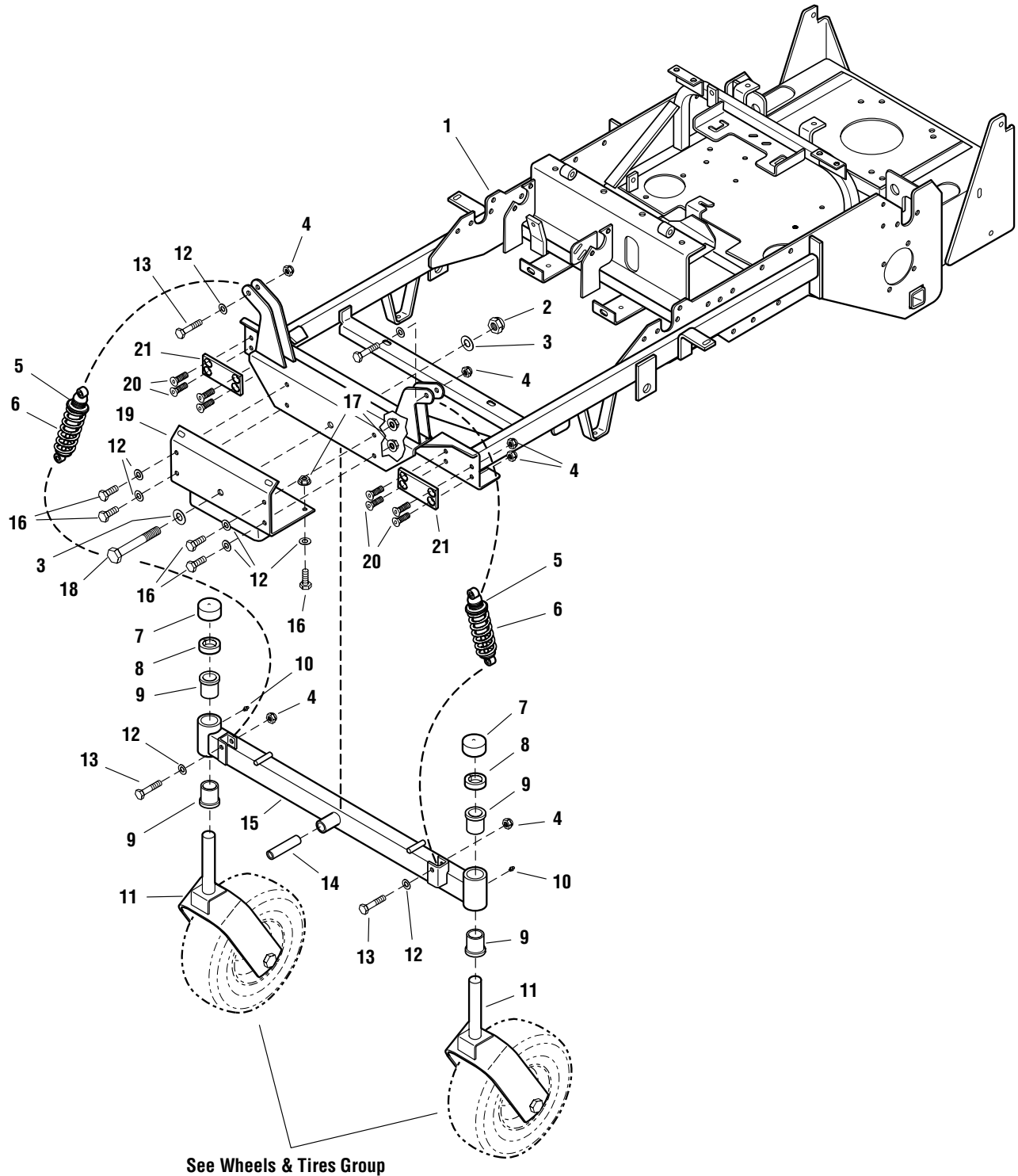
Mfg. No.	Description
1694456	44" Mower Deck
1694459	44" Mower Deck (CE)
1694457	50" Mower Deck
1694461	50" Mower Deck (CE)

TRACTOR / MOWER DECK COMPONENTS	PAGES
Frame Group	4
Bumper Group	6
Engine & PTO Group - 18HP Kohler	8
Engine & PTO Group - 20HP Briggs & Stratton	10
Drive Group	12
Brake Group	14
Lift Group	18
Hydraulics Group	22
Controls Group - Panel	24
Controls Group - Upper	26
Controls Group - Lower	28
Electrical Group	30
Seat & Kickplate Group	32
Fuel Tank Group	34
Wheels & Tires Group	36
Decals Group - Brand & Model	38
Decals Group - Safety & Common	40
44" & 50" Mower Deck - Housing, Arbors & Blades Group	42
44" & 50" Mower Deck - Belt & Idler Group	44
44" Mower Deck - Roller Bar Group	46
50" Mower Deck - Roller Bar Group	48
Torque Specification Chart	Inside Back Cover

Frame Group

FI0010

NOTE: Unless noted otherwise,
use the standard hardware torque
specification chart.



The above parts group applies to the following Mfg. Nos.:

- 1694454 - Champion
- 1694455 - Champion
- 1694458 - Champion
- 1694460 - Champion

Frame Group

REF NO.	PART NO.	QTY.	DESCRIPTION
1	503848002	1	FRAME, Main Weldment
2	5025056	1	NUT, Hex Nylon Lock, 1/2-13
3	5025158	2	WASHER, SAE, 1/2
4	5025057	12	NUT, Hex Nylon Lock, 5/16-18
5	5023199	2	O-RING
6	5023213	2	SHOCK ABSORBER
7	5023214	2	VINYL CAP
8	5020602	2	COLLAR, SPLIT, 1"
9	5021541	4	BUSHING, FLANGE
10	5020095	2	FITTING, Grease
11	503848775	2	CASTER YOKE
12	5025155	10	WASHER, SAE, 5/16
13	502501114	4	CAPSCREW, Hex Head, 5/16-18 X 1-3/4
14	5048106	1	SPACER, .51 X .75 X 3.375
15	503848108	1	PIVOT FRAME WELDMENT
16	50250116	6	CAPSCREW, Hex Head, 5/16-18 X 3/4
17	5025139	6	NUT, Hex Flange Whiz Lock, 5/16-18
18	502501740	1	CAPSCREW, Hex Head, 1/2-13 X 5
19	503848241	1	DECK HANGER WELDMENT
20	5025303	8	SCREW, FLAT HEAD SOCKET, 5/16-18 X 3/4
21	5045990	2	FRICTION PLATE

Footnotes

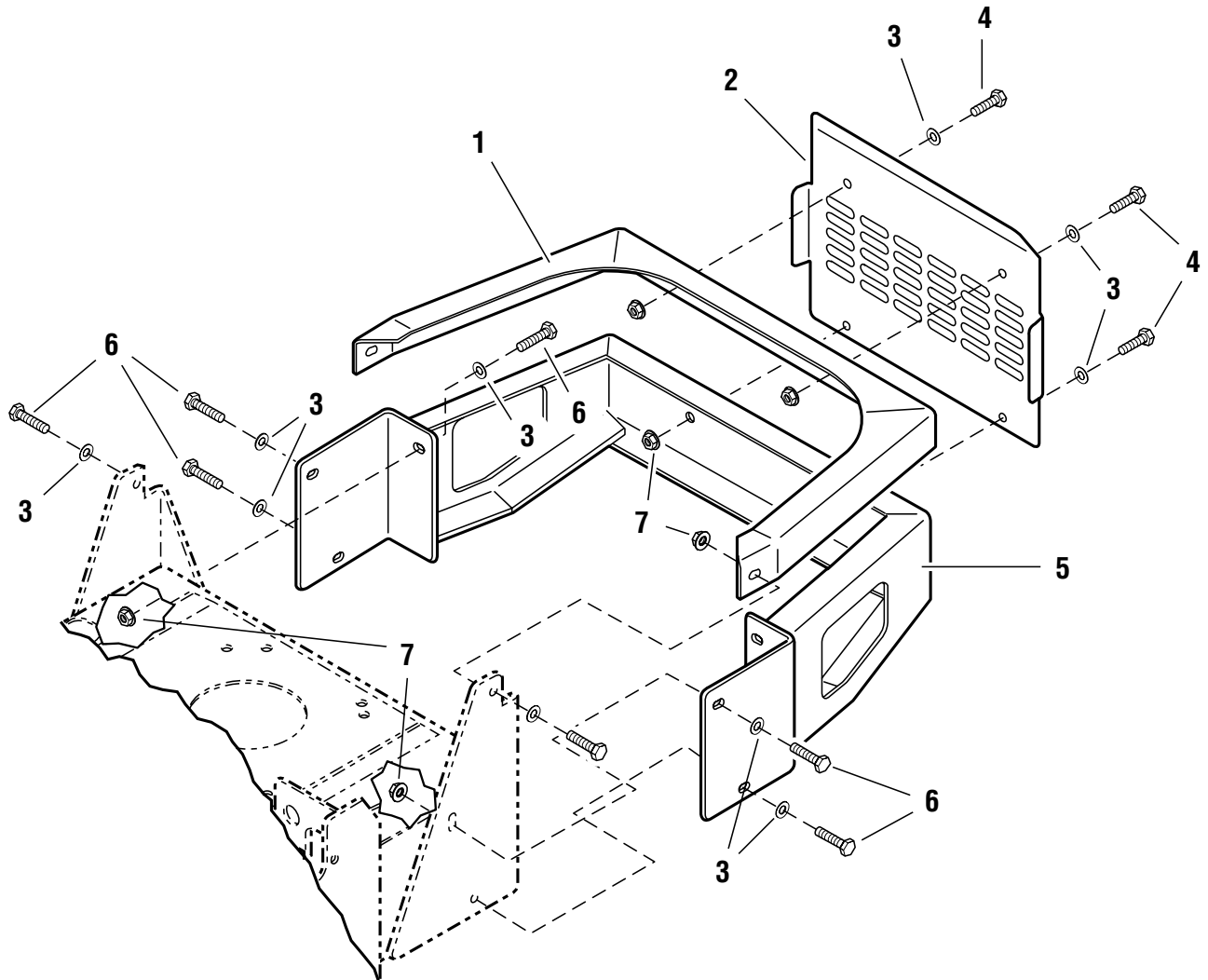
The above parts group applies to the following Mfg. Nos.:

1694454 - Champion
1694455 - Champion
1694458 - Champion
1694460 - Champion

Bumper Group

FI0011

NOTE: Unless noted otherwise,
use the standard hardware torque
specification chart.



The above parts group applies to the following Mfg. Nos.:

- 1694454 - Champion
- 1694455 - Champion
- 1694458 - Champion
- 1694460 - Champion

Bumper Group

REF NO.	PART NO.	QTY.	DESCRIPTION
1	503848887	1	TOP BUMPER
2	503848257	1	BUMPER SHIELD
3	5025155	12	WASHER, SAE, 5/16
4	50250116	4	CAPSCREW, Hex Head, 5/16-18 x 3/4
5	503848249	1	LOWER BUMPER
6	50250118	8	CAPSCREW, Hex Head, 5/16-18 x 1
7	5025127	12	NUT, Hex Flange Whiz Lock, 5/16-18

Footnotes

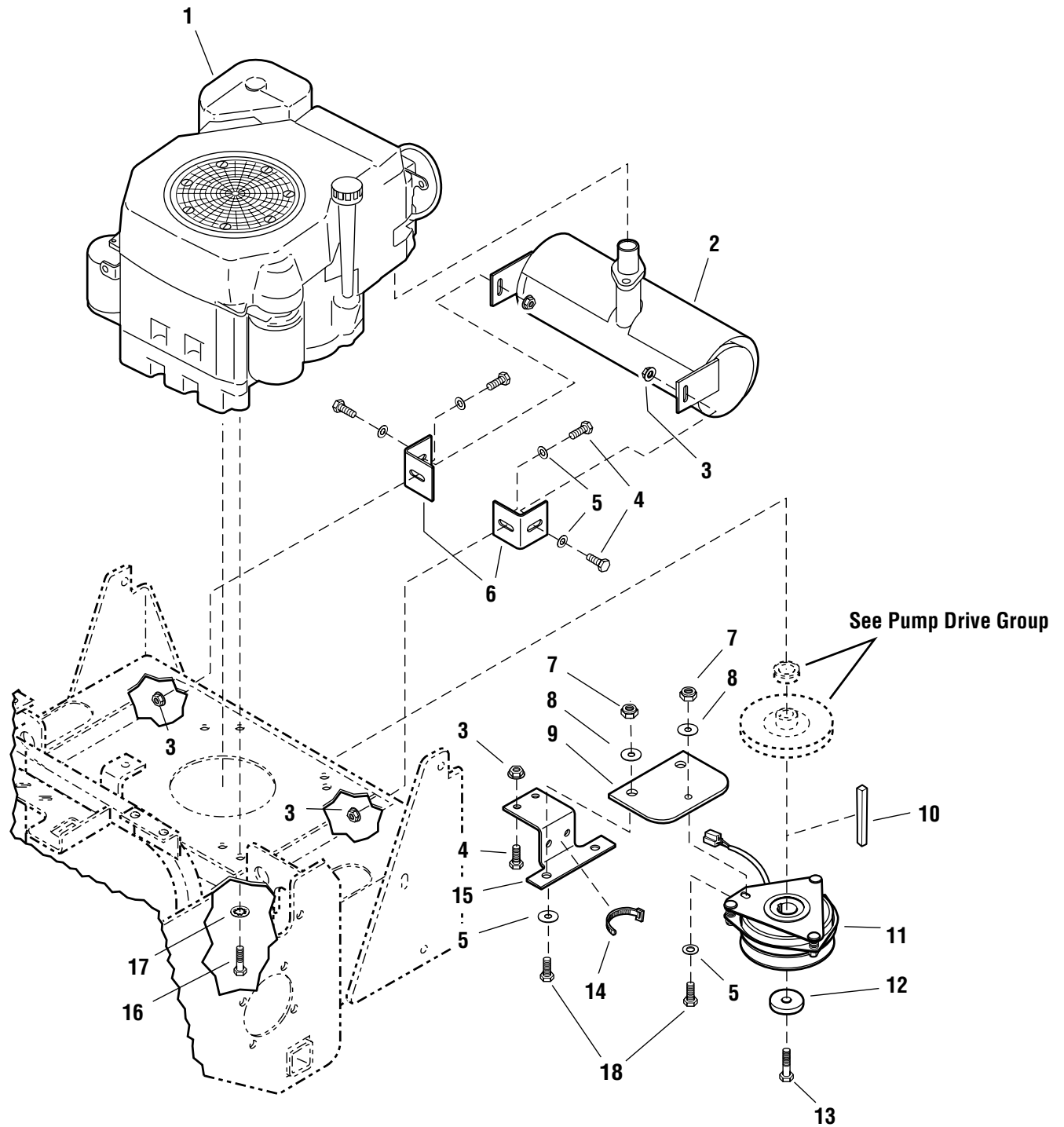
The above parts group applies to the following Mfg. Nos.:

1694454 - Champion
1694455 - Champion
1694458 - Champion
1694460 - Champion

Engine & PTO Group - 18HP Kohler

FI0013

NOTE: Unless noted otherwise,
use the standard hardware torque
specification chart.



The above parts group applies to the following Mfg. Nos.:

1694454 - Champion

1694458 - Champion

Engine & PTO Group - 18HP Kohler

REF NO.	PART NO.	QTY.	DESCRIPTION
1	*	1	ENGINE, 18HP Kohler, Model SV-493S Type PS-27523
2	5023186	1	MUFFLER
3	5025139	6	NUT, Hex Flange Whiz Lock, 5/16-18
4	50250116	9	CAPSCREW, Hex Head, 5/16-18 X 3/4
5	5025155	5	WASHER, SAE, 5/16
6	503848263	2	BRACKET, Muffler Support (ORANGE)
7	5025057	3	NUT, Hex Nylon Lock, 5/16-18
8	5044617009	5	WASHER, Clutch Anchor, 5/16
9	5043636	1	CLUTCH ANCHOR PAD
10	505040718	1	KEY, 1/4 SQ. X 2-1/4
11	5023100	1	CLUTCH, ELECTRIC
12	5042132	1	SPACER, .45 X 1.62 X .37
13	5047342	1	CAPSCREW, CRANKSHAFT, 7/16 X 3-1/2
14	5021030	1	TIE WRAP
15	503848226	1	CLUTCH ANCHOR (ORANGE)
16	5025353	4	BOLT, M8-1.25 X 30 MM
17	5025188	4	LOCKWASHER, 5/16 Internal Tooth
18	50250118	3	CAPSCREW, Hex Head, 5/16-18 X 1

Footnotes

* See your local Kohler engine dealer for service parts.

The above parts group applies to the following Mfg. Nos.:

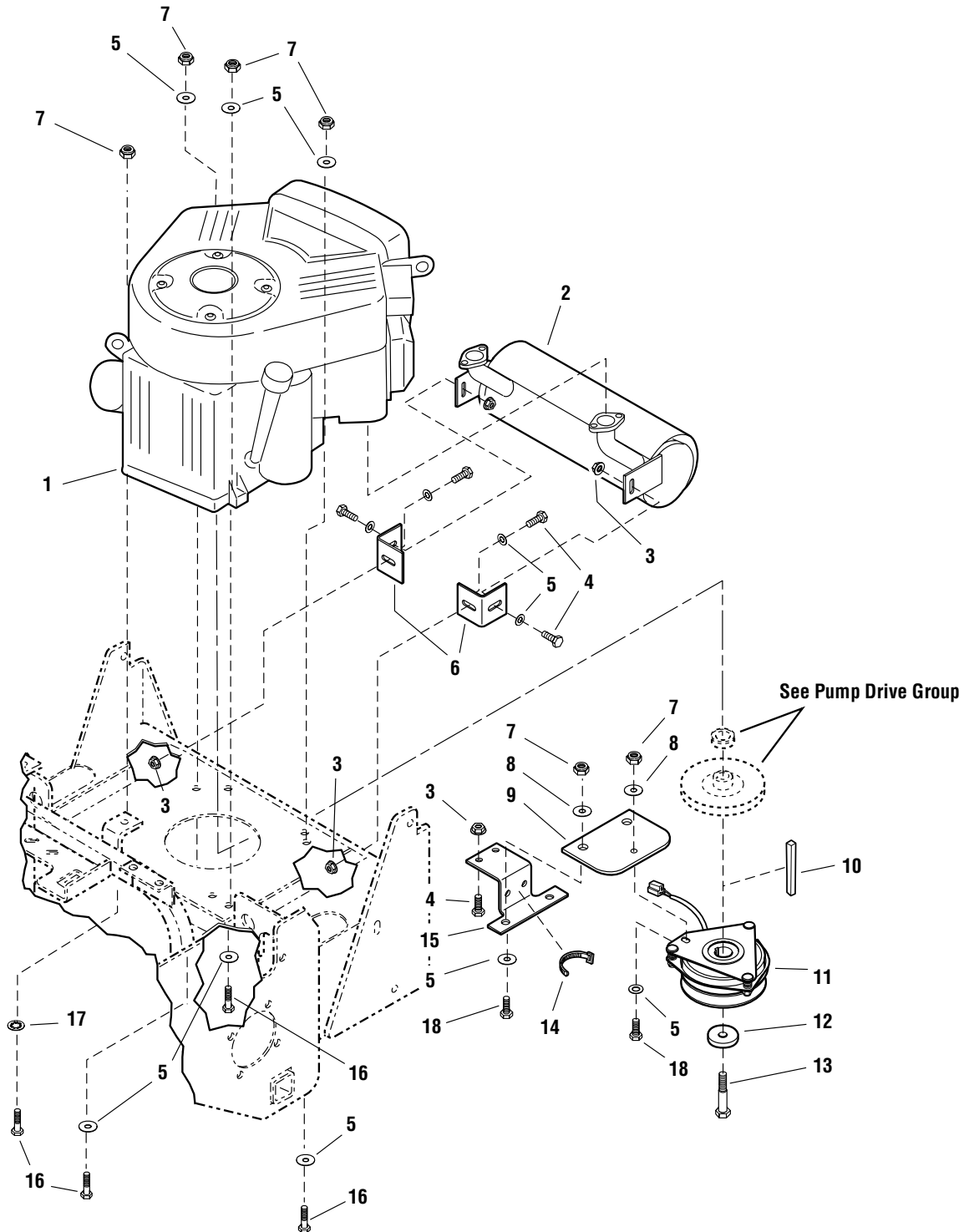
1694454 - Champion

1694458 - Champion

Engine & PTO Group - 20HP Briggs & Stratton

FI0012

NOTE: Unless noted otherwise,
use the standard hardware torque
specification chart.



The above parts group applies to the following Mfg. Nos.:

1694455 - Champion

1694460 - Champion

Engine & PTO Group - 20HP Briggs & Stratton

REF NO.	PART NO.	QTY.	DESCRIPTION
1	*	1	ENGINE, 20HP Briggs & Stratton, Model 358777 Type 0280-E1
2	5023187	1	MUFFLER
3	5025139	6	NUT, Hex Flange Whiz Lock, 5/16-18
4	50250116	6	CAPSCREW, Hex Head, 5/16-18 X 3/4
5	5025155	13	WASHER, SAE, 5/16
6	503848263	2	BRACKET, Muffler Support (ORANGE)
7	5025057	7	NUT, Hex Nylon Lock, 5/16-18
8	5044617009	3	WASHER, CLUTCH ANCHOR, 5/16
9	5043636	1	CLUTCH ANCHOR PAD
10	505040718	1	KEY, 1/4 SQ. X 2-1/4
11	5023100	1	CLUTCH, ELECTRIC
12	5042132	1	SPACER, .45 X 1.62 X .37
13	5047342	1	CAPSCREW, CRANKSHAFT, 7/16 X 3-1/2
14	5021030	1	TIE WRAP
15	503848226	1	CLUTCH ANCHOR (ORANGE)
16	502501114	4	CAPSCREW, Hex Head, 5/16-18 X 1-3/4
17	5025188	1	LOCKWASHER, 5/16 Internal Tooth
18	50250118	3	CAPSCREW, Hex Head, 5/16-18 X 1

Footnotes

* See your local Briggs & Stratton engine dealer for service parts.

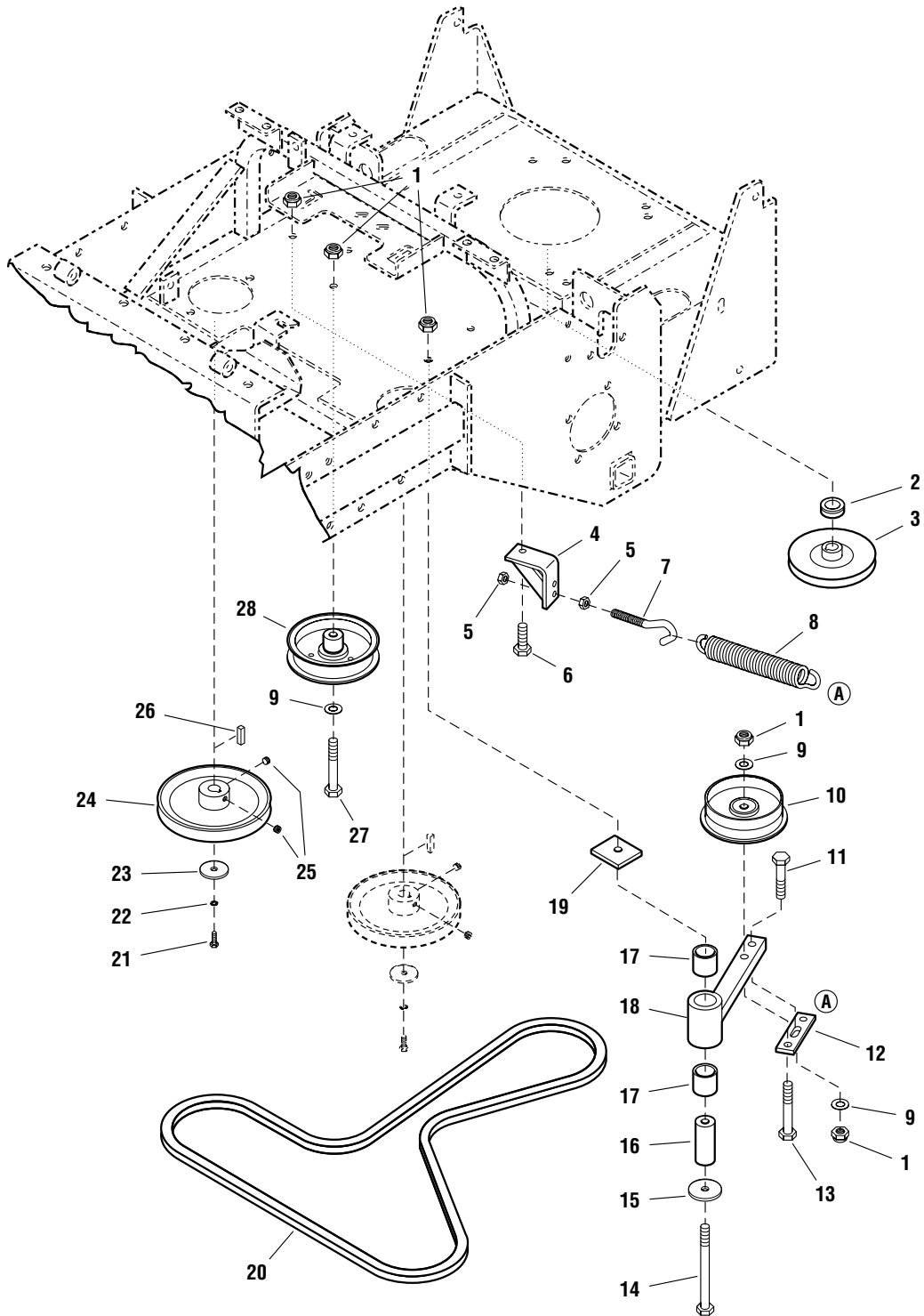
The above parts group applies to the following Mfg. Nos.:

1694455 - Champion
1694460 - Champion

Drive Group

FI0014

NOTE: Unless noted otherwise,
use the standard hardware torque
specification chart.



The above parts group applies to the following Mfg. Nos.:

- 1694454 - Champion
- 1694455 - Champion
- 1694458 - Champion
- 1694460 - Champion

Drive Group

REF NO.	PART NO.	QTY.	DESCRIPTION
1	5025096	5	NUT, Hex Nylon Lock, 3/8-16
2	5048227	1	SPACER, CRANKSHAFT
3	5023112	1	PULLEY, PUMP DRIVE
4	503845200	1	EYEBOLT ANCHOR
5	5025034	2	NUT, Hex, 3/8-16
6	50250138	1	CAPSCREW, Hex Head, 3/8-16 X 1
7	5025321	1	J-HOOK
8	5022847	1	SPRING, EXTENSION, SWIVEL END
9	5025156	3	WASHER, FLAT, 3/8
10	5022621	1	PULLEY, Idler, Single Flange
11	502501314	1	CAPSCREW, Hex Head, 3/8-16 X 1-3/4
12	503848219	1	SPRING ANCHOR PLATE
13	502501320	1	CAPSCREW, Hex Head, 3/8-16 X 2-1/2
14	502501332	1	CAPSCREW, Hex Head, 3/8-16 X 4
15	5045139	1	WASHER, RETAINER
16	5045135	1	SHAFT, Idler PIVOT
17	5022157	2	BUSHING, BRASS
18	503846430	1	PUMP DRIVE IDLER ARM
19	5045090	1	SPACER, Idler PIVOT
20	5022931	1	BELT
21	5023215	4	CAPSCREW, Hex Head, M6 X 14MM
22	5025169	2	LOCKWASHER, 1/4
23	5044577009	2	WASHER, 1-1/2 OD X .265 ID X .109 THICK
24	5023111	2	PULLEY, PUMP DRIVE
25	50250612	4	SET SCREW, 5/16-18 X 1/2
26	5022156	2	KEY, 5MM SQ. X 25MM
27	502501318	1	CAPSCREW, Hex Head, 3/8-16 X 2-1/4
28	5049003	1	IDLER PULLEY ASSEMBLY

Footnotes

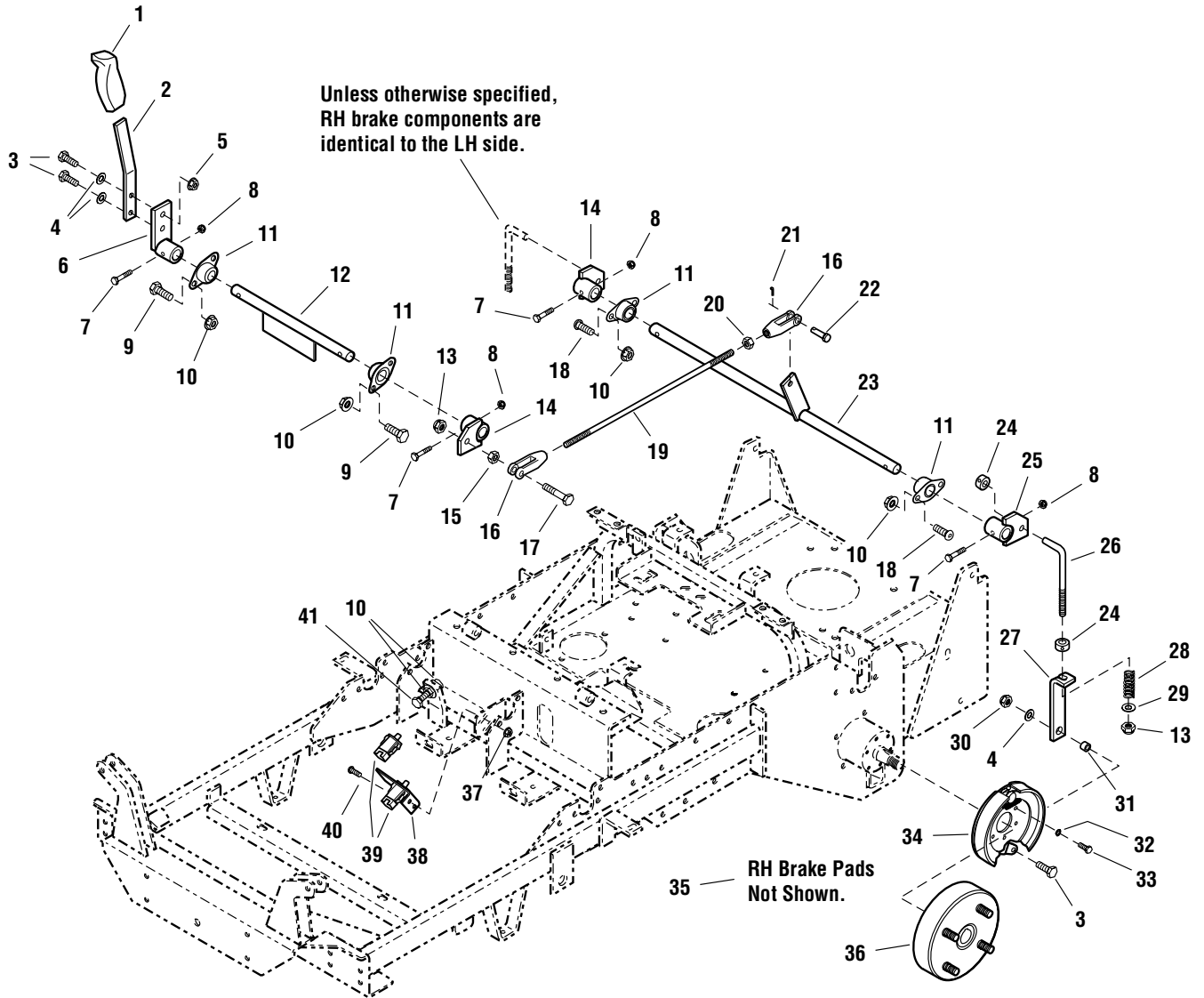
The above parts group applies to the following Mfg. Nos.:

1694454 - Champion
1694455 - Champion
1694458 - Champion
1694460 - Champion

Brake Group

FI0020

NOTE: Unless noted otherwise, use the standard hardware torque specification chart.



The above parts group applies to the following Mfg. Nos.:

- 1694454 - Champion
- 1694455 - Champion
- 1694458 - Champion
- 1694460 - Champion

Brake Group

REF NO.	PART NO.	QTY.	DESCRIPTION
1	1722302	1	GRIP
2	503845619	1	BRAKE HANDLE
3	50250118	4	CAPSCREW, Hex Head, 5/16-18 X 1
4	5025155	4	WASHER, FLAT, 5/16
5	5025139	2	NUT, Hex Flange Whiz Lock, 5/16-18
6	503848401	1	MOUNT, BRAKE HANDLE
7	502501014	4	CAPSCREW, Hex Head, 1/4-20 X 1-3/4
8	5025095	4	NUT, Hex Nylon Lock, 1/4-20
9	50250136	4	CAPSCREW, Hex Head, 3/8-16 X 3/4
10	5025128	10	NUT, Hex Flange Whiz Lock, 3/8-16
11	5021098	4	BEARING, FLANGE
12	503848163	1	BRAKE SHAFT, FRONT
13	5025096	1	NUT, Hex Nylon Lock, 3/8-16
14	503847146	2	BRAKE LINKAGE PIVOT
15	5025034	1	NUT, Hex, 3/8-16
16	5021171	2	CLEVIS, 3/8-24
17	502501316	1	CAPSCREW, Hex Head, 3/8-16 X 2
18	50250756	4	CAPSCREW, BUTTON ALLEN HEAD, 3/8-16 X 3/4
19	5042553009	1	ROD
20	5025035	1	NUT, Hex, 3/8-24
21	50252016	1	PIN, Cotter
22	50252148	1	PIN, Clevis, 3/8 X 1
23	503848166	1	BRAKE SHAFT, REAR
24	5010546	4	COLLAR, SET, 3/8
25	503848392	1	BRAKE LINKAGE PIVOT
26	5047091	2	ROD, BRAKE ADJSUTMENT
27	503847084	2	BRAKE LINK
28	5022361	2	SPRING, Compression
29	5025156	2	WASHER, FLAT, 3/8
30	5025057	2	NUT, Hex Nylon Lock, 5/16-18
31	5041930009	2	PIVOT SLEEVE
32	5025169	12	LOCKWASHER, 1/4
33	5023215	12	CAPSCREW, Hex Head, M6 X 14MM
34	5023188	1	BRAKE ASSEMBLY, LH
35	5023106	1	BRAKE ASSEMBLY, RH (NOT SHOWN)
36	5023094	2	BRAKE DRUM, 4 BOLT
37	5025126	2	NUT, Hex Flange Whiz Lock, 1/4-20
38	503845621	1	BRACKET, Switch Mount
39	5022182	2	SWITCH, Plunger, Snap In
40	50250105	2	CAPSCREW, Hex Head, 1/4-20 X 5/8

Footnotes

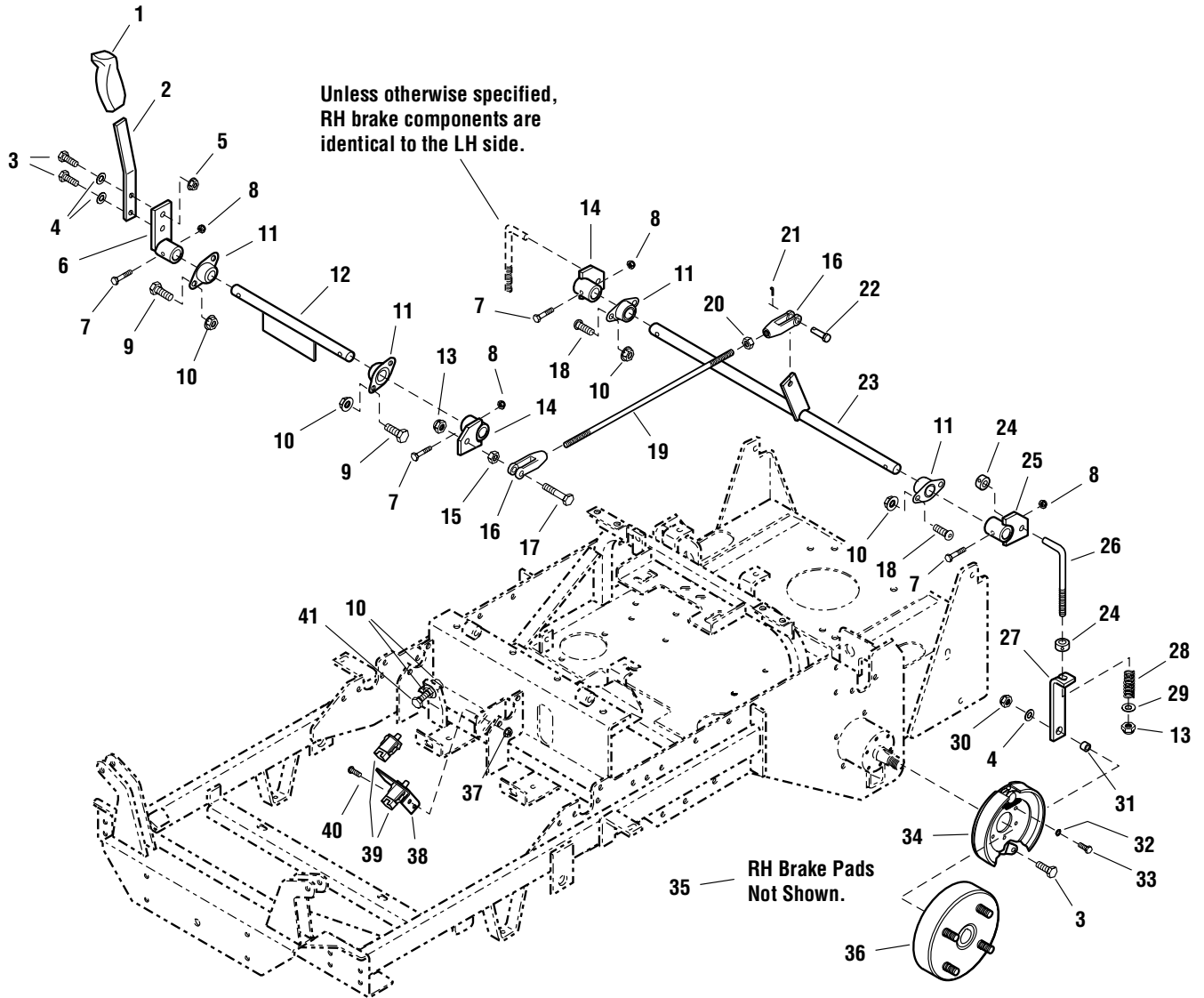
The above parts group applies to the following Mfg. Nos.:

1694454 - Champion
1694455 - Champion
1694458 - Champion
1694460 - Champion

Brake Group

FI0020

NOTE: Unless noted otherwise, use the standard hardware torque specification chart.



The above parts group applies to the following Mfg. Nos.:

- 1694454 - Champion
- 1694455 - Champion
- 1694458 - Champion
- 1694460 - Champion

Brake Group

REF NO.	PART NO.	QTY.	DESCRIPTION
41	502505816	1	CAPSCREW, Hex Head, Taptite Flange Lock, 3/8-16 X 2

Footnotes

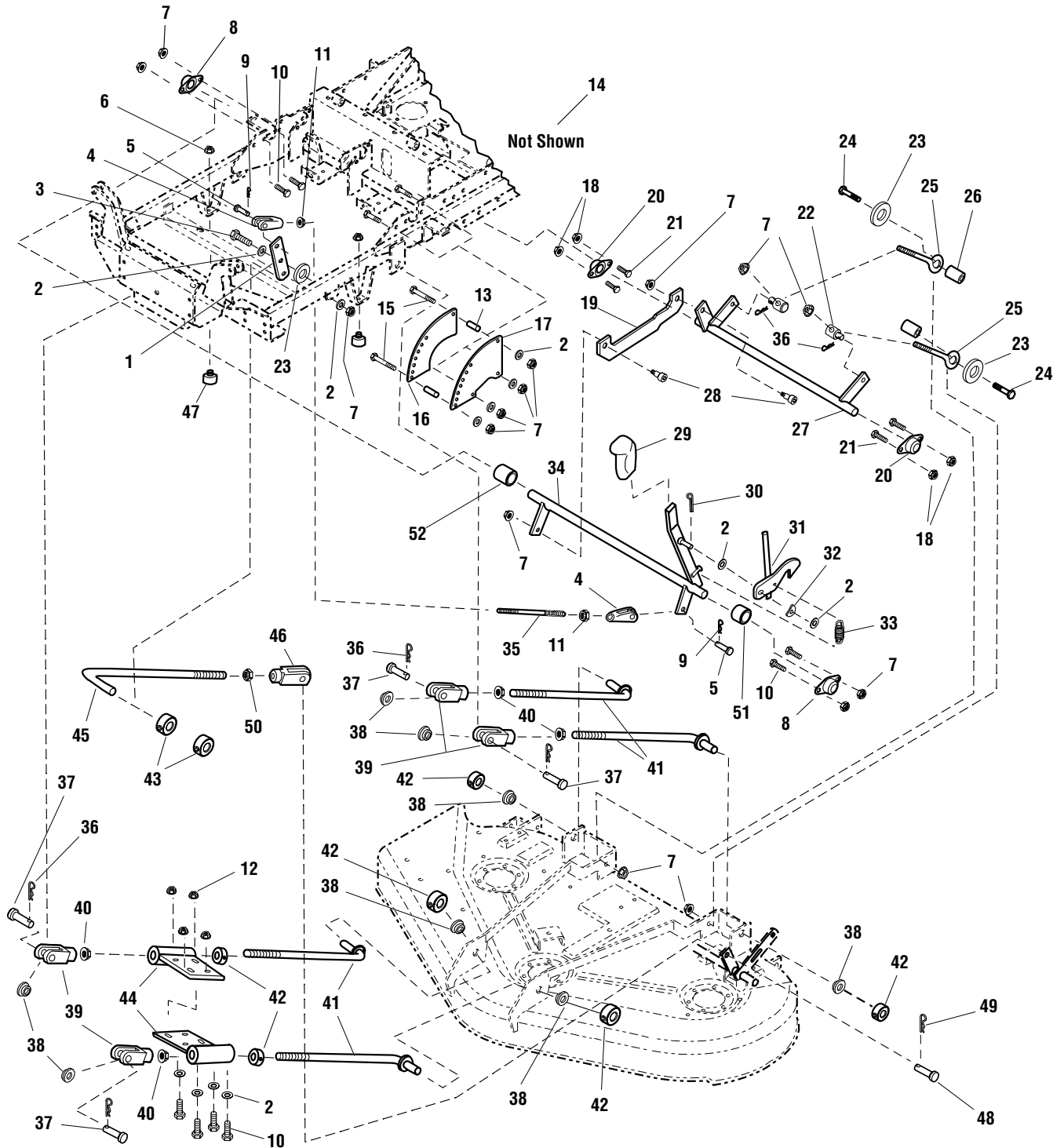
The above parts group applies to the following Mfg. Nos.:

1694454 - Champion
1694455 - Champion
1694458 - Champion
1694460 - Champion

Lift Group

FI0015

NOTE: Unless noted otherwise,
use the standard hardware torque
specification chart.



The above parts group applies to the following Mfg. Nos.:

- 1694454 - Champion
- 1694455 - Champion
- 1694458 - Champion
- 1694460 - Champion

Lift Group

REF NO.	PART NO.	QTY.	DESCRIPTION
1	503848698	1	REVERSING LINK
2	5025156	11	WASHER, 3/8, SAE
3	502501312	1	CAPSCREW, Hex Head, 3/8-16 X 1-1/2
4	5021171	2	CLEVIS, Plastic, 3/8-24
5	50252148	2	PIN, 3/8 DIA X 1"
6	5025126	2	NUT, Hex Flange Whiz Lock, 1/4-20
7	5025096	11	NUT, Hex Nylon Lock, 3/8-16
8	5021098	2	BEARING, Flange Bronze, 3/4"
9	50252016	2	PIN, Cotter
10	50250136	8	CAPSCREW, Hex Head, 3/8-16 X 3/4
11	5025309	2	NUT, Hex Jam, 3/8-24
12	5025128	4	NUT, Hex Flange Whiz Lock, 3/8-16
13	5048264	2	SPACER
14	5023082	1	HITCH PIN ASSEMBLY, 1/2 X 3.50 (NOT SHOWN)
15	502501320	2	CAPSCREW, Hex Head, 3/8-16 X 2-1/2
16	503848750	1	DECK HEIGHT PLATE, Inner
17	503848744	1	DECK HEIGHT PLATE, OUTER
18	5025057	4	NUT, Hex Nylon Lock, 5/16-18
19	503848733	1	ARM ASSEMBLY, Deck Lift Link
20	5021098	2	BRONZE FLANGE BUSHING
21	50250116	4	CAPSCREW, Hex Head, 5/16-18 X 3/4
22	5045947	2	ADJUSTER, Brake Linkage
23	5045139009	3	WASHER, 1-3/4 OD X .390 ID
24	502501318	2	CAPSCREW, Hex Head, 3/8-16 X 1-3/4
25	5021812	2	EYE BOLT, 3/8-16
26	5047125	2	SPACER
27	503848711	1	REAR DECK LIFT SHAFT
28	5025356	2	BOLT, Shoulder, 1/2" X 3/8"
29	5023198	1	HANDLE COVER
30	502520212	1	PIN, Cotter, 3/16 X 1-1/2
31	503848884	1	DECK LOCK
32	5023202	1	WASHER, Spring 3/8
33	5020639	1	SPRING, Extension
34	503848697	1	DECK HEIGHT SHAFT
35	5042533009	1	ROD, 3/8
36	5025210	6	HAIRPIN
37	502532812	4	PIN, Clevis, 1/2 X 1-1/2
38	5048258	4	SUPPORT BUSHING
39	5023174	4	CLEVIS, 1/2-20
40	5025089	4	NUT, Hex Jam 1/2-20

Footnotes

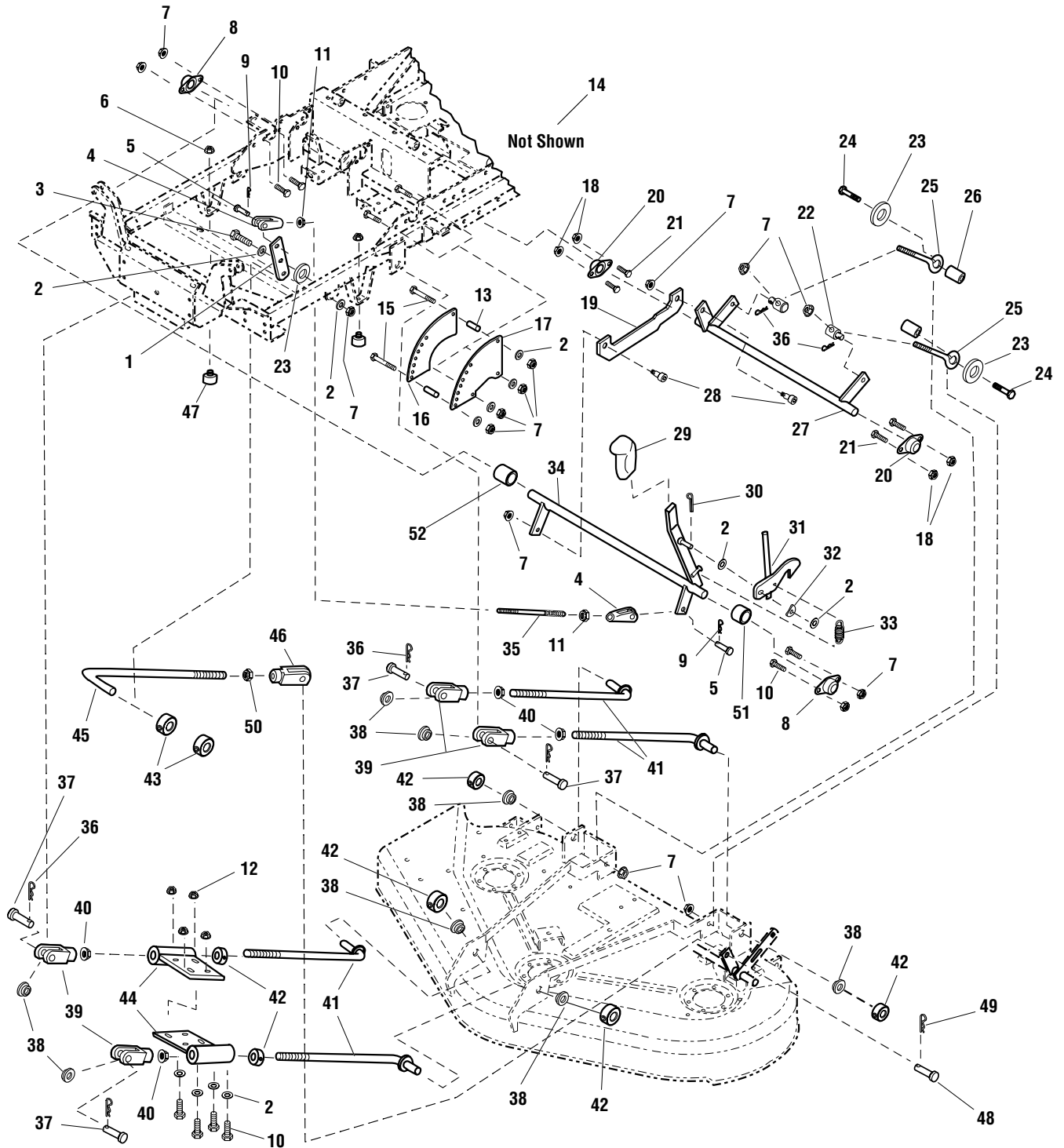
The above parts group applies to the following Mfg. Nos.:

1694454 - Champion
1694455 - Champion
1694458 - Champion
1694460 - Champion

Lift Group

FI0015

NOTE: Unless noted otherwise,
use the standard hardware torque
specification chart.



The above parts group applies to the following Mfg. Nos.:

- 1694454 - Champion
- 1694455 - Champion
- 1694458 - Champion
- 1694460 - Champion

Lift Group

REF NO.	PART NO.	QTY.	DESCRIPTION
41	5048768	4	DECK HANGER ROD
42	5010580	6	SET COLLAR, 1/2"
43	5010580	2	SET COLLAR, 1/2"
44	503848902	2	DECK STABILIZER
45	5048755	1	ROLLER CONNECTING ROD (44" DECK)
45	5048691	1	ROLLER CONNECTING ROD (50" DECK)
46	5023174	1	CLEVIS, 1/2-20
47	5022673	2	RUBBER BUMPER, 1/4-20
48	502532812	1	PIN, Clevis, 1/2 X 1-1/2
49	5025210	1	HAIRPIN
50	5025089	1	NUT, Hex Jam 1/2-20
51	5046092	1	SPACER, .76 X 1.00 X .50
52	5048335	1	SPACER, .76 X 1.00 X 1.00

Footnotes

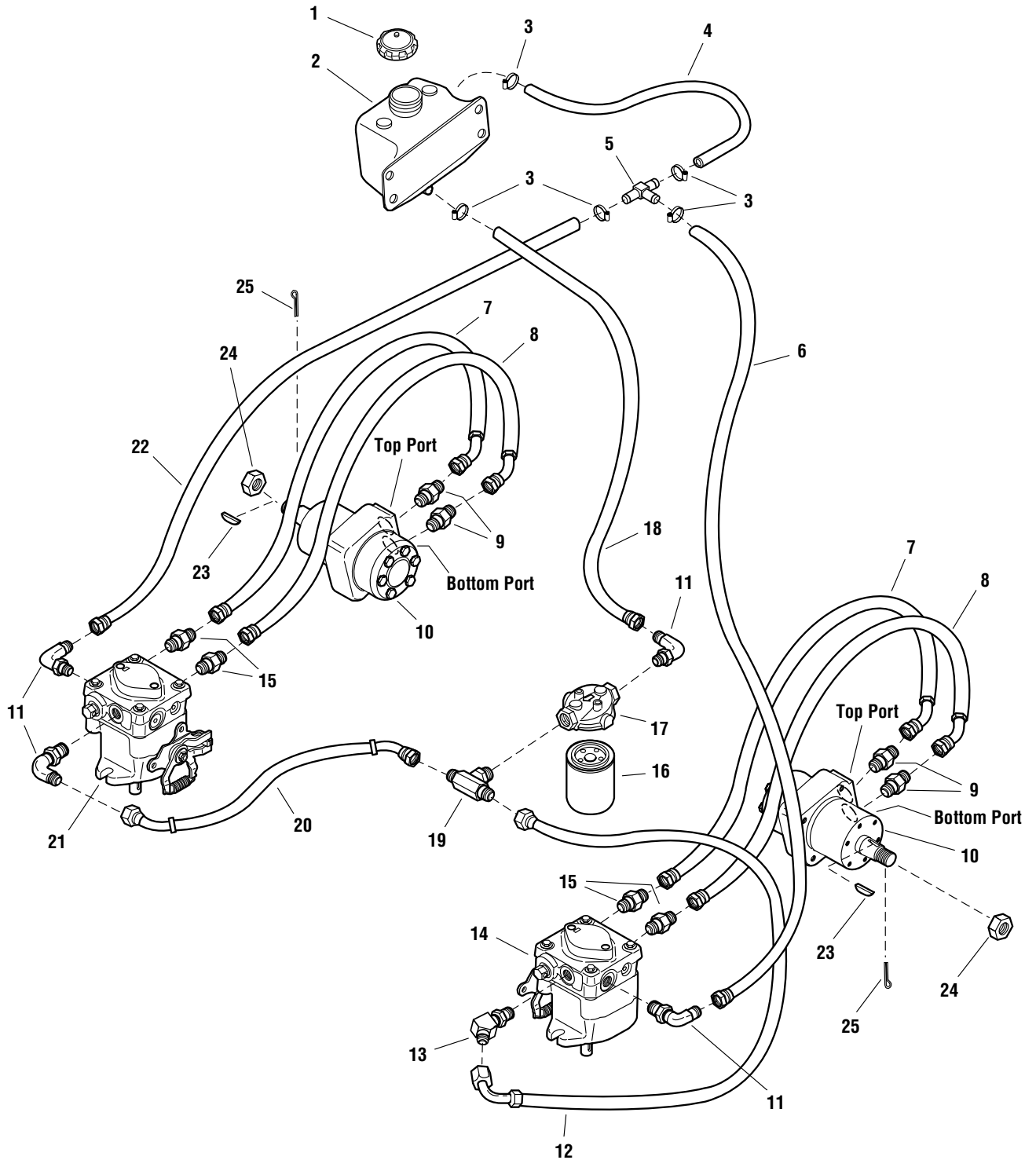
The above parts group applies to the following Mfg. Nos.:

1694454 - Champion
1694455 - Champion
1694458 - Champion
1694460 - Champion

Hydraulics Group

FI0016

NOTE: Unless noted otherwise,
use the standard hardware torque
specification chart.



The above parts group applies to the following Mfg. Nos.:

- 1694454 - Champion
- 1694455 - Champion
- 1694458 - Champion
- 1694460 - Champion

Hydraulics Group

REF NO.	PART NO.	QTY.	DESCRIPTION
1	5023191	1	CAP
2	5023185	1	HYDRAULIC TANK
3	5021392	5	CLAMP, #6 HOSE
4	50508608.5	1	HOSE, 3/8 X 8-1/2" LONG
5	5022920	1	TEE FITTING
6	5048998	1	HOSE ASSEMBLY, 26" LONG
7	5022710	2	HOSE ASSEMBLY, HI PRESS, 25-1/2"
8	5023086	2	HOSE ASSEMBLY, HI PRESS, 29"
9	5022634	4	FITTING, ADAPTER
10	5023091	2	WHEEL MOTOR
11	5022712	4	FITTING, 90 DEG. O-RING
12	5048999	1	HOSE ASSEMBLY, 16-1/2" LONG
13	5023087	1	FITTING, 45 DEG. O-RING
14	5023093	1	HYDRAULIC PUMP, LH
15	5022633	4	FITTING, ADAPTER
16	1719168	1	FILTER
17	5023096	1	FILTER HEAD
18	5049001	1	HOSE ASSEMBLY, 11-3/4" LONG
19	5023161	1	FITTING, TEE
20	5049000	1	HOSE ASSEMBLY, 4-1/2" LONG
21	5023092	1	HYDRAULIC PUMP, RH
22	5049002	1	HOSE ASSEMBLY, 6" LONG
23	50230911	2	KEY
24	50230912	2	NUT, CASTLE
25	502520310	2	PIN, Cotter, 1/8 X 1-1/4

Footnotes

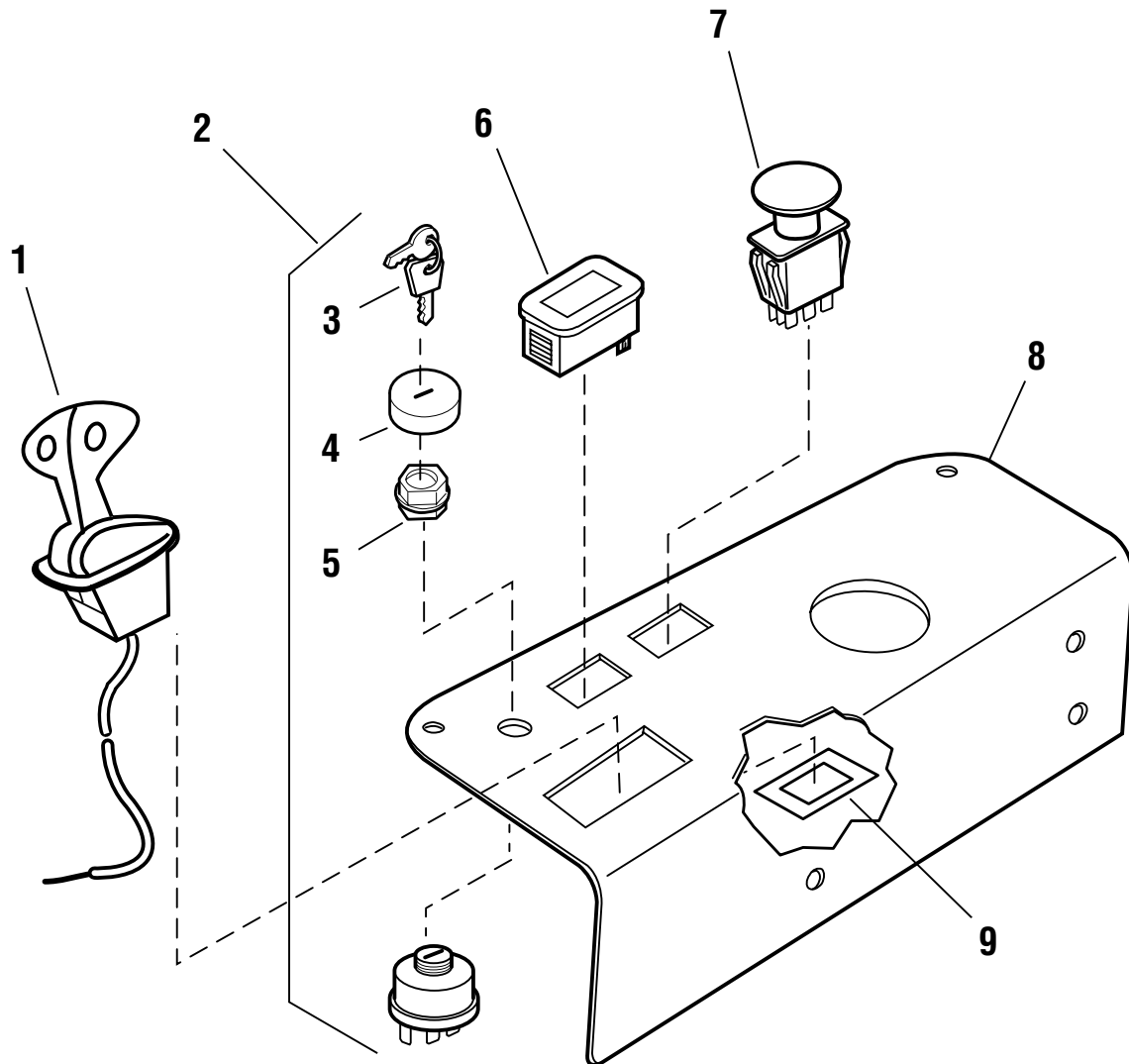
The above parts group applies to the following Mfg. Nos.:

1694454 - Champion
1694455 - Champion
1694458 - Champion
1694460 - Champion

Controls Group - Panel

FI0017

NOTE: Unless noted otherwise,
use the standard hardware torque
specification chart.



The above parts group applies to the following Mfg. Nos.:

- 1694454 - Champion
- 1694455 - Champion
- 1694458 - Champion
- 1694460 - Champion

Controls Group - Panel

REF NO.	PART NO.	QTY.	DESCRIPTION
1	5048943	1	DUAL CHOKE/THROTTLE LEVER (Kohler)
1	1721950	1	DUAL CHOKE/THROTTLE LEVER (Briggs)
2	5020927	1	SWITCH, IGNITION, (Includes Ref 3-5)
3	5022789	1	KEY, Ignition Molded (Set of 2)
4	5022790	1	COVER
5	5022791	1	PLASTIC NUT
6	1725523	1	HOUR METER, DIGITAL (Includes Retaining Ring)
7	5022180	1	SWITCH, PTO
8	502848758	1	CONTROL PANEL
9	5022222	1	RING, SWITCH RETAINER

Footnotes

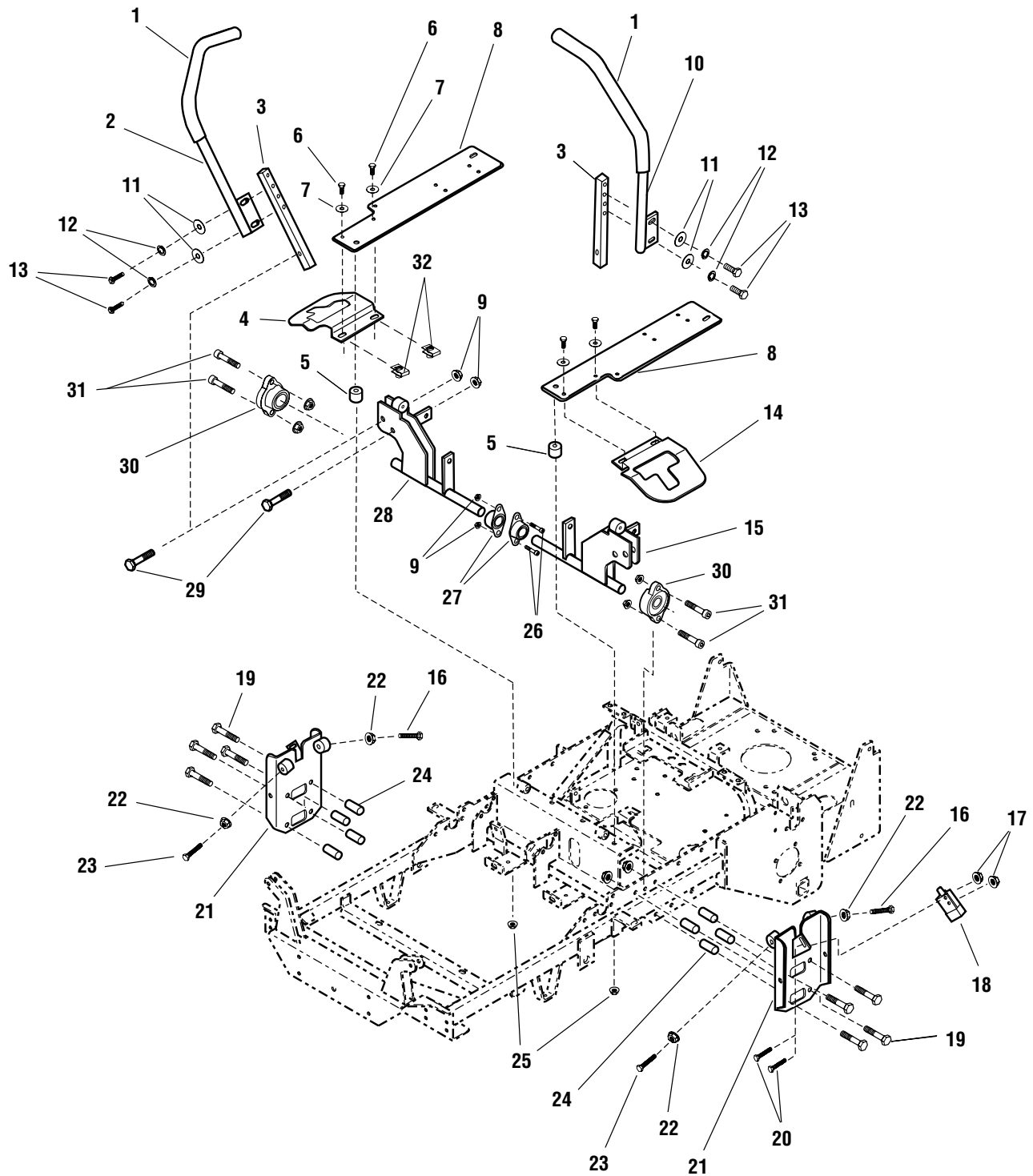
The above parts group applies to the following Mfg. Nos.:

1694454 - Champion
1694455 - Champion
1694458 - Champion
1694460 - Champion

Controls Group - Upper

FI0019

NOTE: Unless noted otherwise,
use the standard hardware torque
specification chart.



The above parts group applies to the following Mfg. Nos.:

- 1694454 - Champion
- 1694455 - Champion
- 1694458 - Champion
- 1694460 - Champion

Controls Group - Upper

REF NO.	PART NO.	QTY.	DESCRIPTION
1	5022068	2	FOAM GRIP
2	503847056	1	MOTION CONTROL LEVER - RH
3	5047004	2	CONTROL LEVER BASE
4	503848905	1	NEUTRAL LOCK PLATE COVER, RH
5	5047125	2	SPACER
6	50250106	4	CAPSCREW, Hex Head, 1/4-20 X 3/4
7	5025154	4	WASHER, SAE, 1/4
8	503848703	2	FAN SHIELD
9	5025096	10	NUT, Hex Nylon Lock, 3/8-16
10	503847055	1	MOTION CONTROL LEVER - LH
11	5025155	4	WASHER, FLAT, 5/16
12	5025170	4	LOCKWASHER, 5/16
13	50250118	4	CAPSCREW, Hex Head, 5/16-18 X 1
14	503848914	1	NEUTRAL LOCK PLATE COVER, LH
15	503848122	1	WELD, CONTROL SHAFT LH
16	502505516	4	CAPSCREW, Hex Head, Taptite Flange Lock, 5/16-18 X 2
17	5025079	4	NUT, Hex, #10-24
18	5022095	2	SWITCH, NO/NC
19	502501118	8	CAPSCREW, Hex Head, 5/16-18 X 2 1/4
20	50252996	4	SCREW, #10-24
21	503848169	2	WELD, PLATE, NEUTRAL
22	5025139	12	NUT, Hex Flange Whiz Lock, 5/16-18
23	502505514	2	CAPSCREW, Hex Head, Taptite Flange Lock, 5/16-18 X 1-3/4
24	503848264	8	SPACER
25	5025128	2	NUT, Hex Flange Whiz Lock, 3/8-16
26	50250138	2	CAPSCREW, 3/8-16 X 1
27	5021098	2	BRONZE BEARING
28	503848123	1	WELD, CONTROL SHAFT RH
29	502501314	4	CAPSCREW, Hex Head, 3/8-16 X 1 3/4
30	5021499	2	FLANGE BEARING
31	5025327	4	CAPSCREW, SOCKET HEAD, 3/8-16 X 1 1/4
32	5022665	4	BODY CLIP, 1/4-20

Footnotes

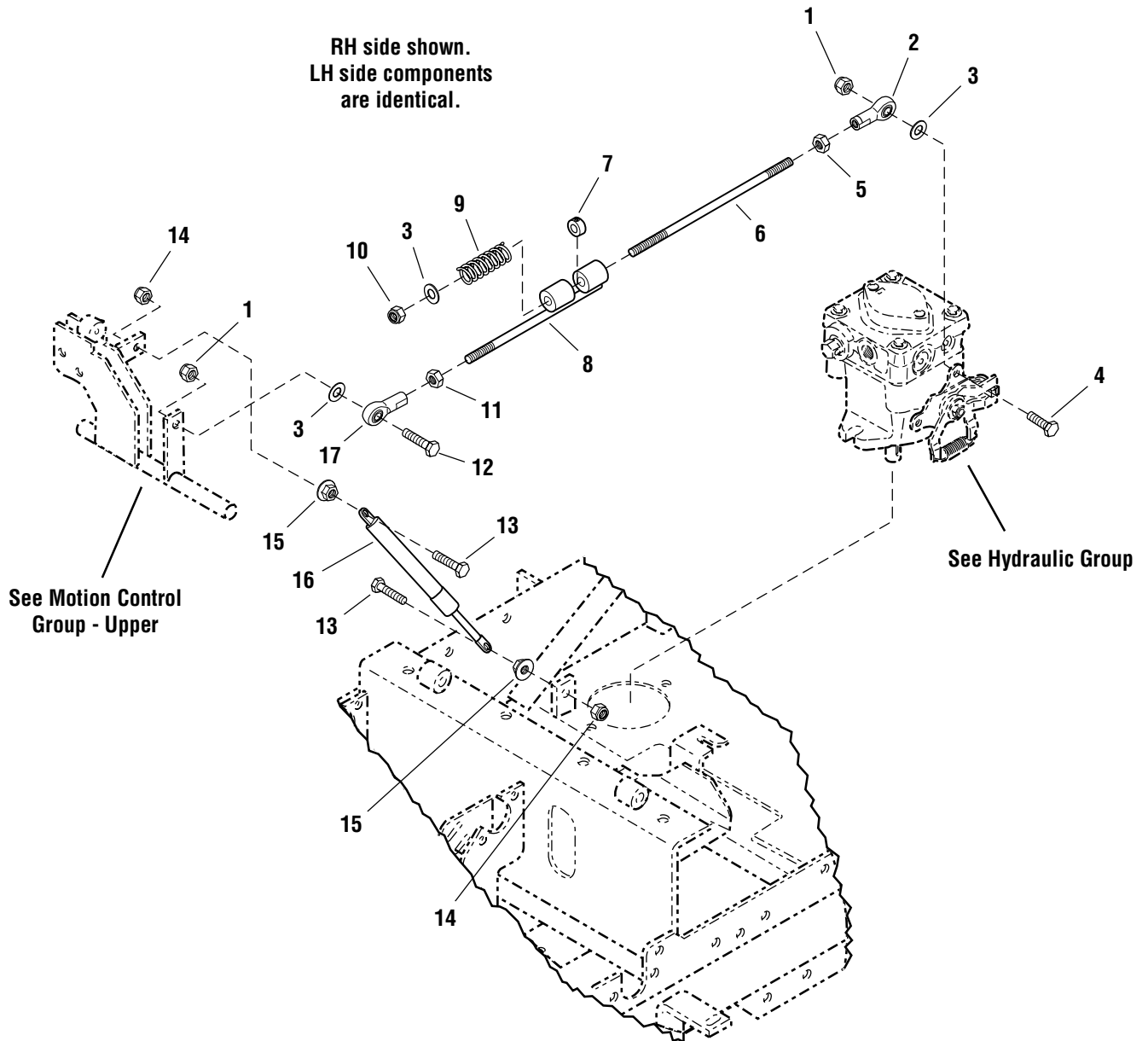
The above parts group applies to the following Mfg. Nos.:

1694454 - Champion
1694455 - Champion
1694458 - Champion
1694460 - Champion

Controls Group - Lower

FI0018

NOTE: Unless noted otherwise,
use the standard hardware torque
specification chart.



The above parts group applies to the following Mfg. Nos.:

- 1694454 - Champion
- 1694455 - Champion
- 1694458 - Champion
- 1694460 - Champion

Controls Group - Lower

REF NO.	PART NO.	QTY.	DESCRIPTION
1	5025057	4	NUT, Hex Nylon Lock, 5/16-18
2	5022628	2	BALL JOINT, 5/16-24, LH
3	5025155	6	WASHER, SAE, 5/16
4	50250119	2	CAPSCREW, Hex Head, 5/16-18 X 1-1/8
5	5023212	2	NUT, Hex, 5/16-24, LH
6	5048921	2	SPRING CONTROL ROD
7	5020047	2	COLLAR, SET, 5/16
8	5048923	2	SLIDER ROD ASSEMBLY
9	5048980	2	SPRING
10	5025045	2	NUT, Hex Nylon Lock, 5/16-24
11	5025033	2	NUT, Hex, 5/16-24
12	502501110	2	CAPSCREW, Hex Head, 5/16-18 X 1-1/4
13	5025335	4	CAPSCREW, Hex Head, M8-1.25 X 35MM
14	5025354	4	NUT, Hex Nylon Lock, M8-1.25
15	5025355	4	NUT, Hex Flange Whiz Lock, M8-1.25
16	5022978	2	DAMPENER
17	5021146	2	BALL JOINT, 5/16-24

Footnotes

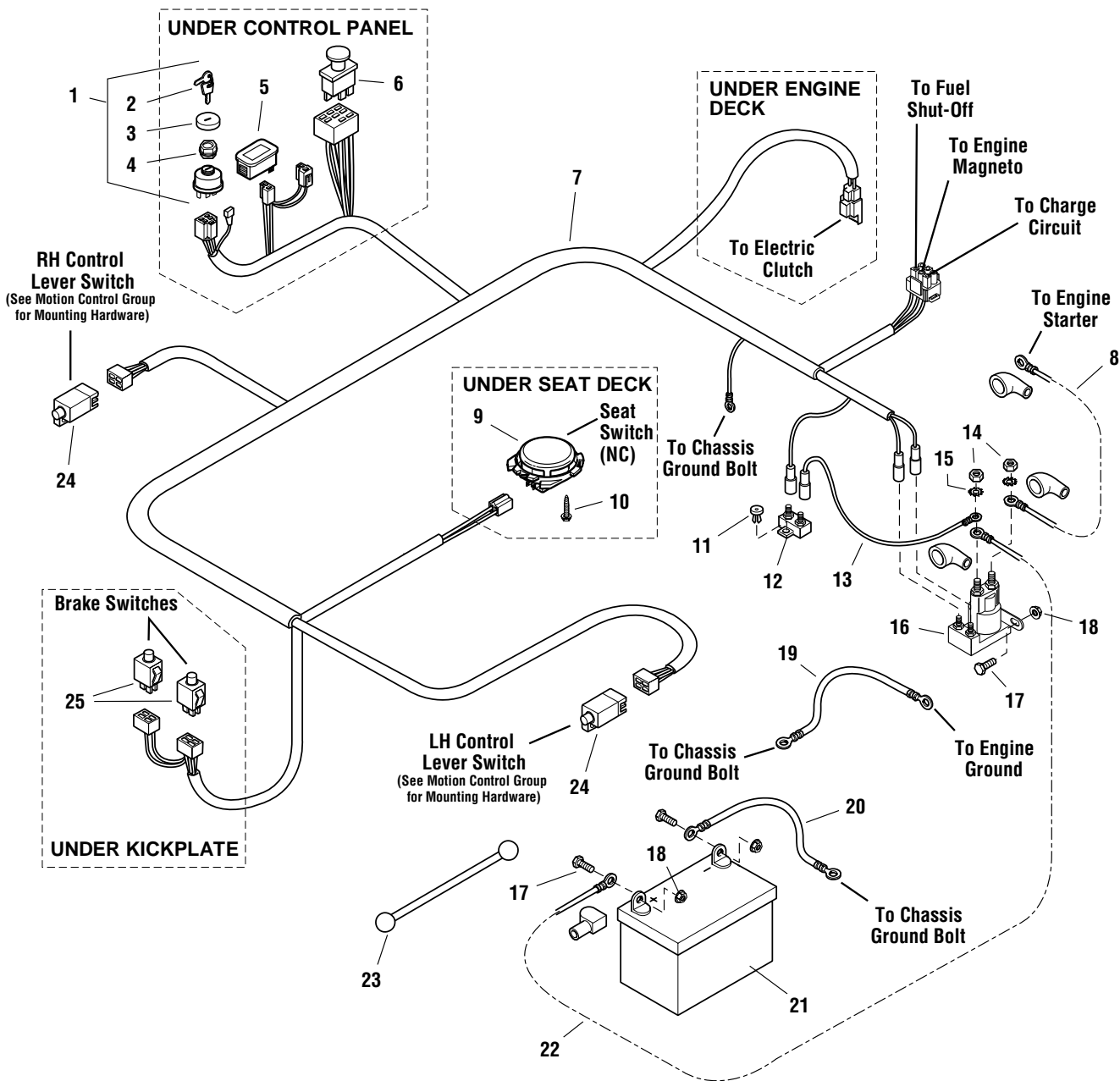
The above parts group applies to the following Mfg. Nos.:

1694454 - Champion
1694455 - Champion
1694458 - Champion
1694460 - Champion

Electrical Group

FI0021

NOTE: Unless noted otherwise, use the standard hardware torque specification chart.



The above parts group applies to the following Mfg. Nos.:

- 1694454 - Champion
- 1694455 - Champion
- 1694458 - Champion
- 1694460 - Champion

Electrical Group

REF NO.	PART NO.	QTY.	DESCRIPTION
1	5020927	1	SWITCH, Ignition, (Includes Ref 2-4)
2	5022789	1	KEY, Ignition Molded (Set of 2)
3	5022790	1	COVER
4	5022791	1	PLASTIC NUT
5	1725523	1	HOUR METER, Digital (Includes Retaining Ring)
6	5022180	1	SWITCH, PTO
7	5048640	1	MAIN HARNESS ASSEMBLY
8	5048756	1	CABLE, #6 X 15" Long, Ring Terminal
9	1716368	1	SWITCH, Seat, Gray, NC
10	1960536	2	CAPSCREW, Hex Washer Head Plastite, 1/4 X 1/2
11	5022289	1	RIVET, Plastic, Push In
12	1665230	1	CIRCUIT BREAKER, 20A
13	5048938	1	WIRE ASSEMBLY, Circuit Breaker
14	5023216	2	NUT, Hex Jam, 5/16-24
15	5023217	2	WASHER, Light Lock, 5/16
16	1724815	1	SOLENOID
17	50250106	4	CAPSCREW, Hex Head, 1/4-20 X 3/4
18	5025126	4	NUT, Hex Flange Whiz Lock, 1/4-20
19	5044014	1	CABLE, #6 X 10" Long, Ring Terminal
20	5021406	1	CABLE, #6 X 22" Long, Ring Terminal
21	5020798	1	BATTERY, 12 Volt
22	5021542	1	CABLE, #6 X 30" Long, Ring Terminal
23	1722009	1	STRAP, Battery, 14 Long, Rubber
24	5022095	2	SWITCH, Plunger, NO/NC
25	5022182	2	SWITCH, Plunger, NO/NC, Snap In

Footnotes

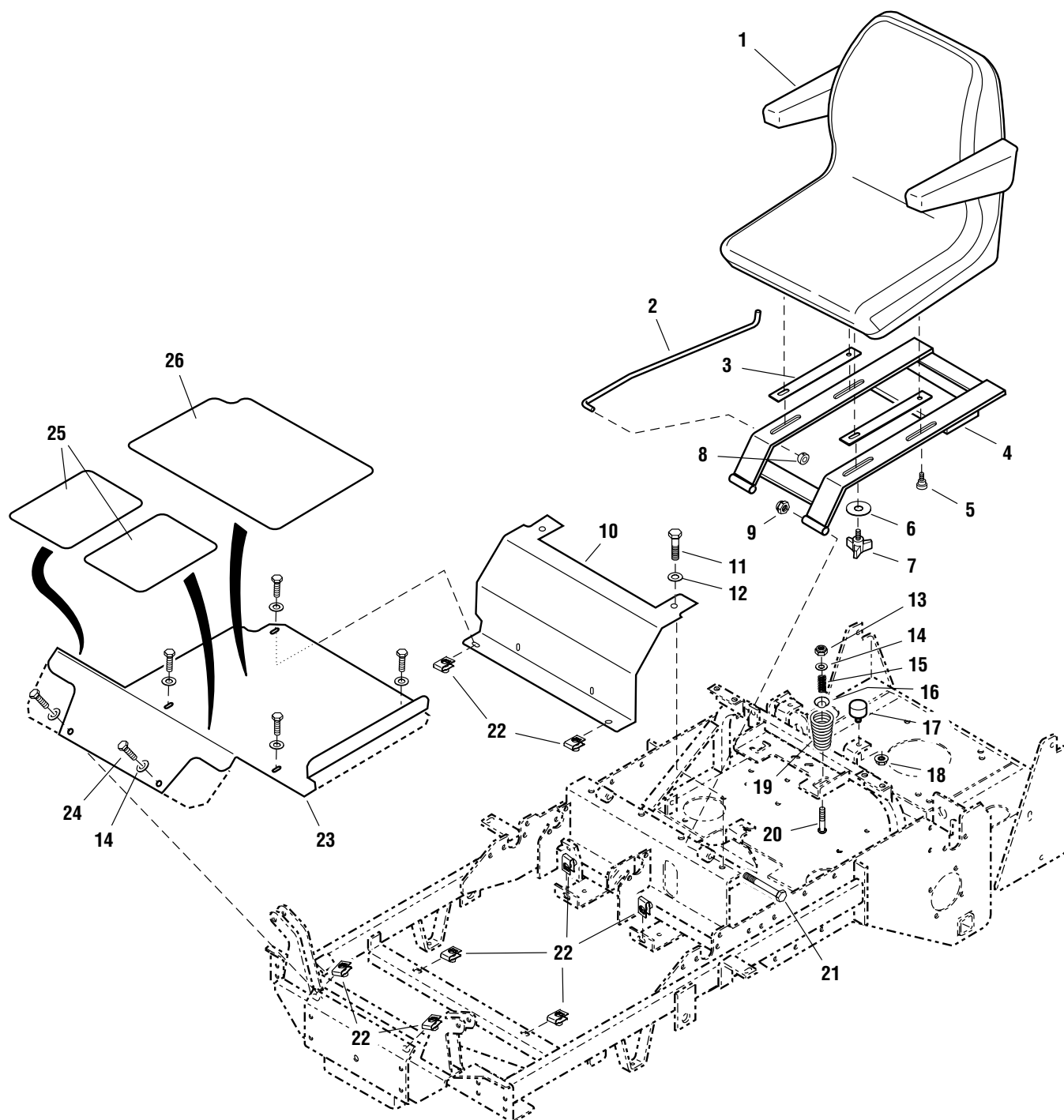
The above parts group applies to the following Mfg. Nos.:

1694454 - Champion
1694455 - Champion
1694458 - Champion
1694460 - Champion

Seat & Kickplate Group

FI0022

NOTE: Unless noted otherwise,
use the standard hardware torque
specification chart.



The above parts group applies to the following Mfg. Nos.:

- 1694454 - Champion
- 1694455 - Champion
- 1694458 - Champion
- 1694460 - Champion

Seat & Kickplate Group

REF NO.	PART NO.	QTY.	DESCRIPTION
1	5023160	1	SEAT
2	5046570	1	SEAT STOP ROD
3	503848365	2	PLATE, SEAT SLIDER
4	503848117	1	SEAT MOUNT
5	5025385	2	BOLT, Shoulder 3/8 X 3/8
6	5025337	2	WASHER, USS, 5/16
7	1700669	2	KNOB
8	5020047	1	COLLAR, SET, 5/16
9	5025096	2	NUT, Hex Nylon Lock, 3/8-16
10	503848218	1	BRAKE COVER PLATE
11	502501316	2	CAPSCREW, Hex Head, 3/8-16 X 2
12	5025156	2	WASHER, SAE, 3/8
13	5025057	2	NUT, Hex Nylon Lock, 5/16-18
14	5025155	8	WASHER, SAE, 5/16
15	1714263	2	SPRING, Compression
16	1709256	2	WASHER, SPRING, 5/16 X 1-1/4
17	5022673	2	BUMPER
18	5025126	2	NUT, Hex Flange Whiz Lock, 1/4-20
19	1717051	2	SPRING, Compression
20	1931339	2	BOLT, Carriage, 5/16-18 X 2
21	502501332	2	CAPSCREW, Hex Head, 3/8-16 X 4
22	5022308	8	BODY CLIP, 5/16-18
23	503848220	1	FLOOR PLATE
24	50250116	8	CAPSCREW, Hex Head, 5/16-18 X 3/4
25	5047139	2	SAFETY WALK
26	5048939	1	SAFETY WALK

Footnotes

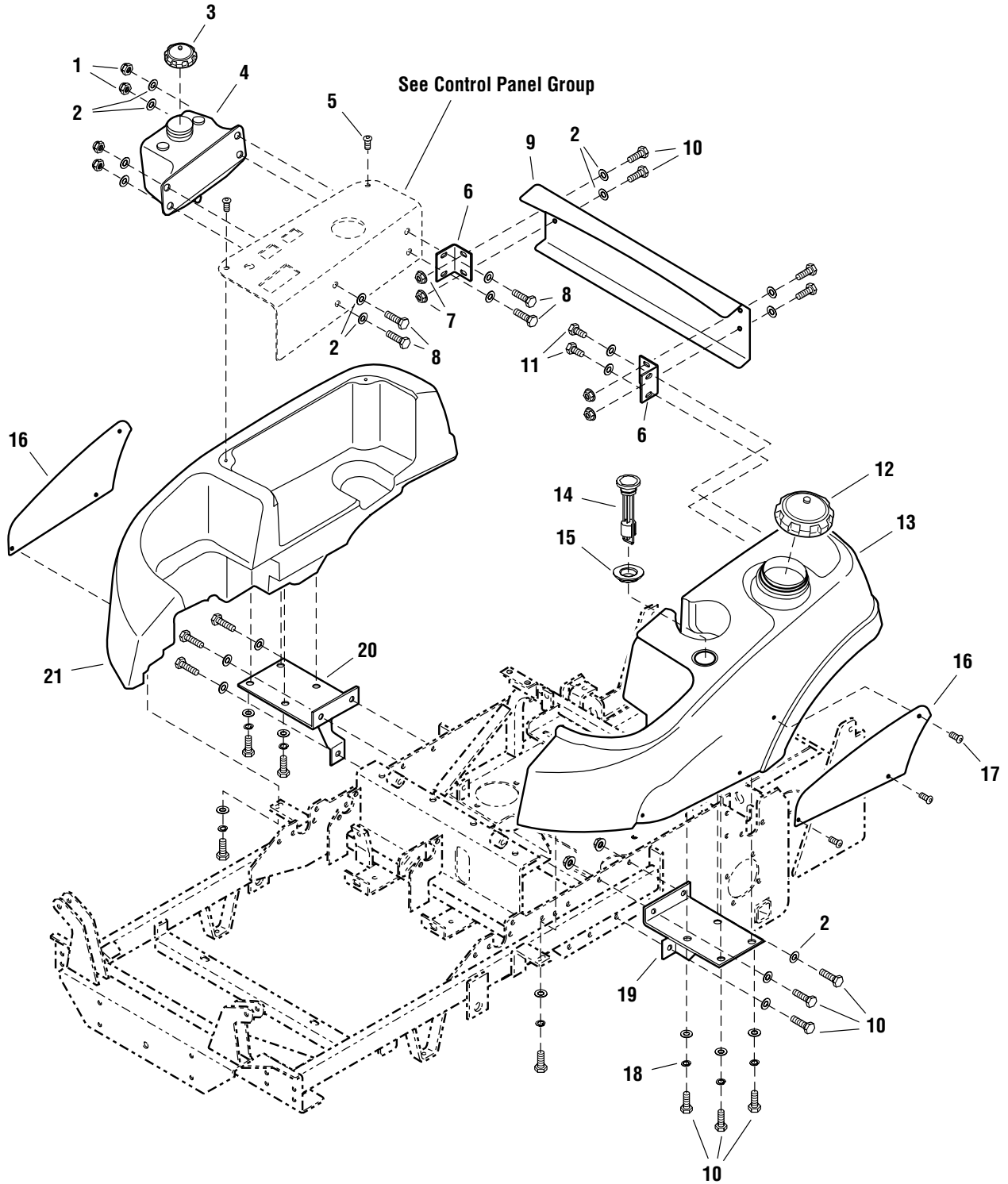
The above parts group applies to the following Mfg. Nos.:

1694454 - Champion
1694455 - Champion
1694458 - Champion
1694460 - Champion

Fuel Tank Group

FI0023

NOTE: Unless noted otherwise,
use the standard hardware torque
specification chart.



The above parts group applies to the following Mfg. Nos.:

- 1694454 - Champion
- 1694455 - Champion
- 1694458 - Champion
- 1694460 - Champion

Fuel Tank Group

REF NO.	PART NO.	QTY.	DESCRIPTION
1	5025057	4	NUT, Hex Nylon Lock, 5/16-18
2	5025155	30	WASHER, SAE, 5/16
3	5023191	1	CAP
4	5023185	1	HYDRAULIC TANK
5	50252994	2	CAPSCREW, BUTTON ALLEN HEAD, 1/4-20 x 1/2
6	503848763	2	BRACKET, Rear Support
7	5025139	10	NUT, Hex Flange Whiz Lock, 5/16-18
8	50250118	4	CAPSCREW, Hex Head, 5/16-18 X 1
9	503848765	1	REAR TANK SUPPORT PLATE
10	50250116	20	CAPSCREW, Hex Head, 5/16-18 X 3/4
11	50250115	2	CAPSCREW, Hex Head, 5/16-18 X 5/8
12	5022158	1	FUEL CAP
13	5048751	1	FUEL TANK ASSEMBLY, LH
*	5023061	1	ELBOW FITTING
*	1654930	1	GROMMET
*	505092520	1	HOSE, 20"
*	5023069	2	HOSE CLAMP
*	5023067	1	SCREEN FITTING
14	5023197	1	FUEL GAUGE
15	50229171	1	GROMMET
16	503848909	2	TANK BADGE
17	5025386	6	CAPSCREW, BUTTON ALLEN HEAD, #10-24 X 3/8
18	5025170	10	LOCKWASHER, 5/16
19	503848704	1	MOUNT, FUEL TANK, LH
20	503848705	1	MOUNT, FUEL TANK, RH
21	5048752	1	FUEL TANK, RH

Footnotes

* Fuel Tank replacement part.

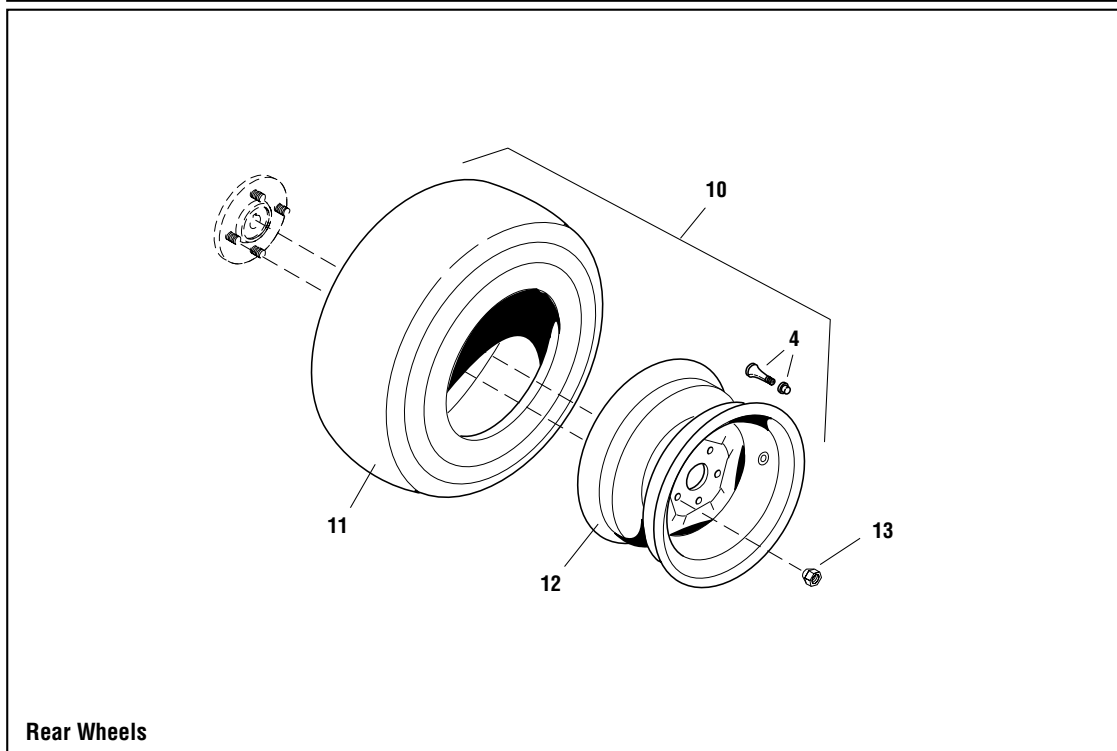
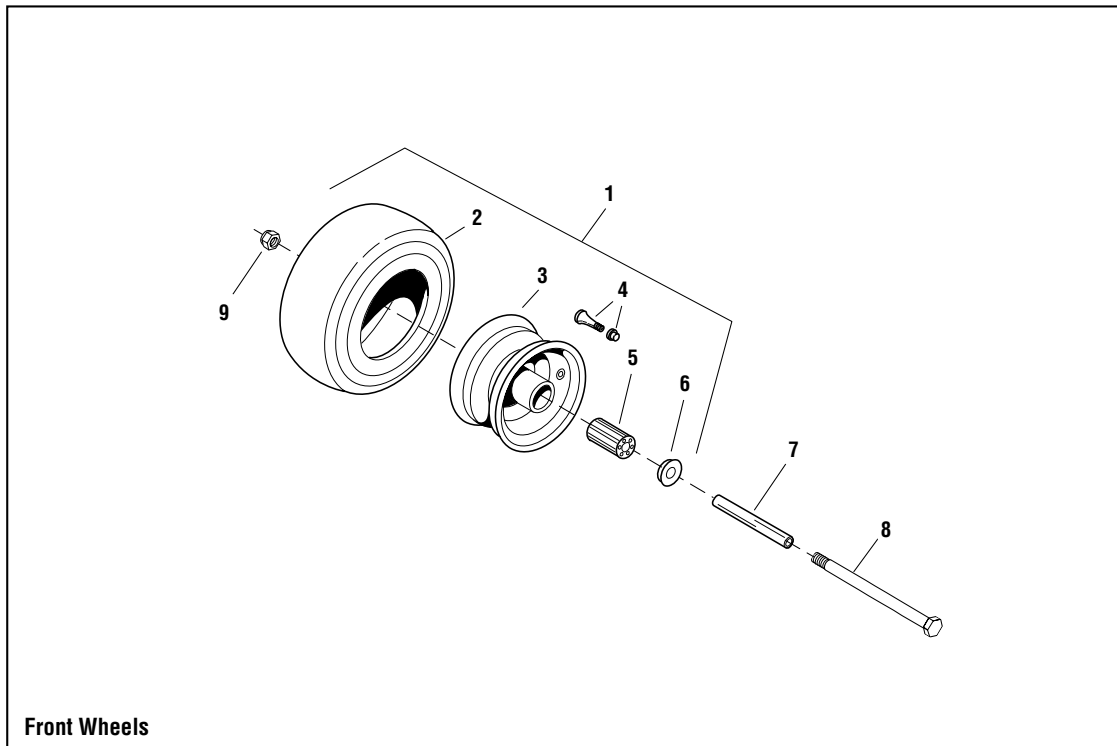
The above parts group applies to the following Mfg. Nos.:

1694454 - Champion
1694455 - Champion
1694458 - Champion
1694460 - Champion

Wheels & Tires Group

FI0024

NOTE: Unless noted otherwise,
use the standard hardware torque
specification chart.



The above parts group applies to the following Mfg. Nos.:

- 1694454 - Champion
- 1694455 - Champion
- 1694458 - Champion
- 1694460 - Champion

Wheels & Tires Group

REF NO.	PART NO.	QTY.	DESCRIPTION
1	5022433S	2	WHEEL & TIRE ASSEMBLY, 11 X 4.0 - 5, COMPLETE (INCLUDES REF NO. 2 - 6)
2	50224331	2	TIRE, FRONT, 11 X 4.0 - 5
3	5022433S2	2	WHEEL ASSEMBLY, COMPLETE (INCLUDES REF NO. 4 & 5)
4	172353	4	VALVE STEM & CAP ASSEMBLY
5	5021042	4	BEARING, ROLLER (2 PER TIRE)
6	5021043	4	BEARING RETAINER (2 PER TIRE)
7	5045996	2	AXLE, FRONT CASTER
8	502501752	2	CAPSCREW, Hex Head, 1/2-13 X 6-1/2
9	5025056	2	NUT, Hex Nylon Lock, 1/2-13
10	5023095	2	WHEEL & TIRE ASSEMBLY, 20 X 8.0 - 10, COMPLETE (INCLUDES REF NO. 4, 11 & 12)
11	50230951	2	TIRE, REAR, 20 X 8.0 X 10
12	50230952	2	WHEEL ASSEMBLY, FOR 20 X 8.0 X 10 TIRE
13	5020601	8	LUG NUT, 1/2-20

Footnotes

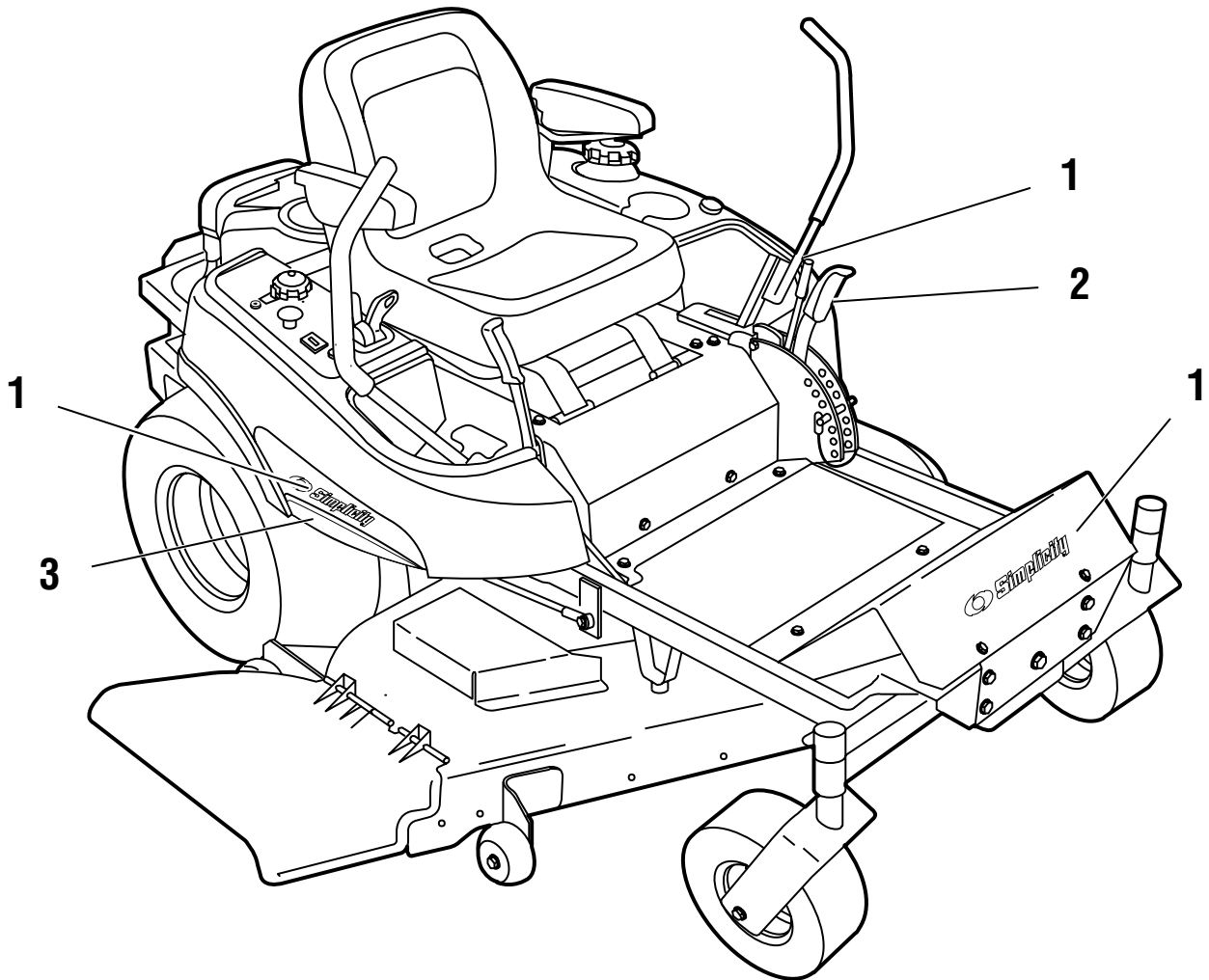
The above parts group applies to the following Mfg. Nos.:

1694454 - Champion
1694455 - Champion
1694458 - Champion
1694460 - Champion

Decals Group - Brand & Model

FI0025

NOTE: Unless noted otherwise,
use the standard hardware torque
specification chart.



The above parts group applies to the following Mfg. Nos.:

1694454 - Champion
1694455 - Champion
1694458 - Champion
1694460 - Champion

Decals Group - Brand & Model

REF NO.	PART NO.	QTY.	DESCRIPTION
1	1722551	1	DECAL, Simplicity, Silver & Blue, w/Icon
2	5023228	1	DECAL, Stripe, LH
3	5023229	1	DECAL, Stripe, RH

Footnotes

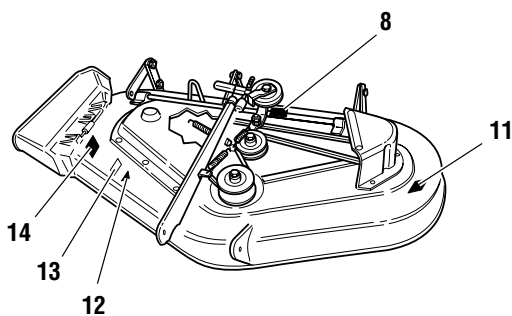
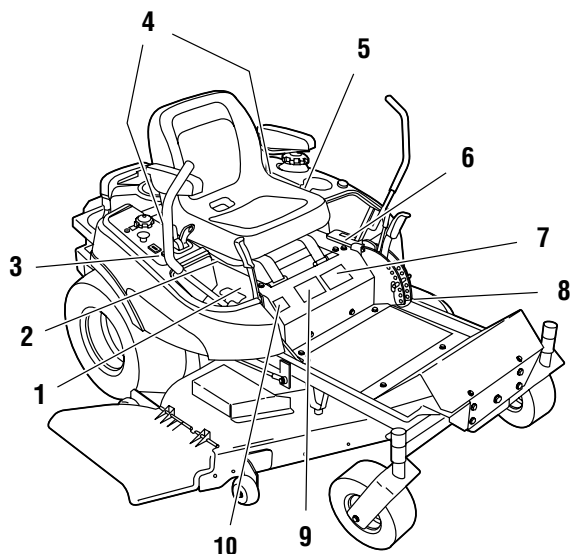
The above parts group applies to the following Mfg. Nos.:

1694454 - Champion
1694455 - Champion
1694458 - Champion
1694460 - Champion

Decals Group - Safety & Common

FI0026

NOTE: Unless noted otherwise, use the standard hardware torque specification chart.



Belts & Blades	
Tractor	
Pump Drive Belt	5022931
44" Mower	
Deck Drive Belt	1703372
Mower Blade	1704100
50" Mower	
Deck Drive Belt	1724507
Mower Blade	1708229

2



3



4

5



6



10



12



13



11



14



The above parts group applies to the following Mfg. Nos.:

- 1694454 - Champion
- 1694455 - Champion
- 1694458 - Champion
- 1694460 - Champion

Decals Group - Safety & Common

REF NO.	PART NO.	QTY.	DESCRIPTION
1	1725671	1	DECAL, Motion Control, RH
2	5048907	1	DECAL, Belt and Blade
3	172806	1	DECAL, Ignition Switch Symbol, White/Black
4	5045562	2	DECAL, Transmission Release, Free Wheel
5	1720454	1	DECAL, Touch Up Paint
6	1725671	1	DECAL, Motion Control, LH
7	1725673	1	DECAL, Danger
8	*	1	DECAL, I.D. Plate
9	1725672	1	DECAL, Warning
10	1725669	1	DECAL, Parking Brake
11	1704276	1	DECAL, Danger Do Not Put Hands/Feet in Mower
12	*	1	DECAL, OPEI Certified
13	1722789	1	DECAL, 44"
13	1722790	1	DECAL, 50"
14	1704277	1	DECAL, Danger Do Not Operate Without Deflector

Footnotes

* Not a service part.

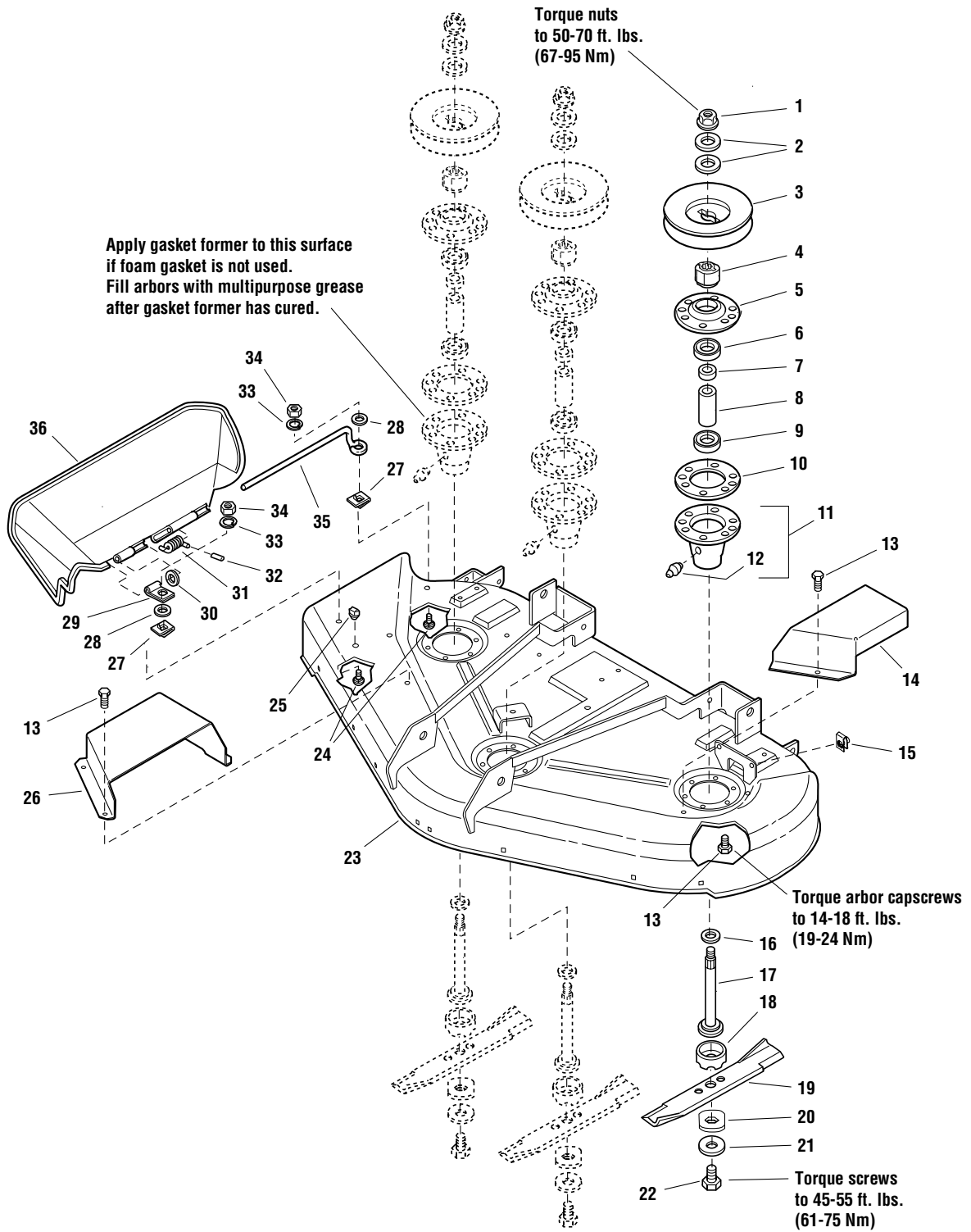
The above parts group applies to the following Mfg. Nos.:

1694454 - Champion
1694455 - Champion
1694458 - Champion
1694460 - Champion

44" & 50" Mower Deck - Housing, Arbors & Blades Group

FI0027

NOTE: Unless noted otherwise, use the standard hardware torque specification chart.



The above parts group applies to the following Mfg. Nos.:

- 1694456 - 44" Mower
- 1694459 - 44" Mower
- 1694457 - 50" Mower
- 1694461 - 50" Mower

44" & 50" Mower Deck - Housing, Arbors & Blades Group

REF NO.	PART NO.	QTY.	DESCRIPTION
1	1714419	3	NUT, Hex Flange, 9/16-18
2	1713675	6	WASHER, BELLEVILLED, 9/16
3	1713161	3	PULLEY
4	1713613	3	HUB
5	1655729	3	COVER, ARBOR HOUSING
6	108202	3	BEARING, BALL, 3/4 X 1-3/4 X 5/8
7	1715724	3	SPACER, 21/32 X 3/4 X 5/8
8	1715723	3	SPACER, 11/16 X 5/32 X 2-11/16
9	1705897	3	BEARING, BALL, 11/16 X 1-9/16 X 15/32
10	1707335	3	SEAL, FOAM
11	1713338	3	ARBOR HOUSING ASSEMBLY (INCLUDES REF. NO. 12)
12	1704314	3	FITTING, Grease
13	1664847	24	CAPSCREW, Hex Head Taptite, 5/16-18 X 3/4
14	503847447	1	COVER, ARBOR, LH
15	5022308	2	BODY CLIP, 5/16-18
16	1713619	3	WASHER, 9/16, BLACK
17	1713195	3	SHAFT, ARBOR
18	1713196	3	SHIELD, GRASS, LOWER
19	1704100	3	BLADE, MOWER, 16-1/8 (FOR 44" DECKS)
19	1708229	3	BLADE, MOWER, 18-1/8 (FOR 50" DECKS)
20	1713089	3	WASHER, Hex, 11/16 X 2
21	1656916	3	WASHER, SPRING, 15/32, BLACK
22	923471	3	CAPSCREW, Hex Head, 7/16-14 X 1-1/4
23	503848742	1	MOWER HOUSING ASSEMBLY, 44" MOWER
23	503848743	1	MOWER HOUSING ASSEMBLY, 50" MOWER
24	1931318	2	BOLT, Carriage, 1/4-20 X 7/8
25	1705115	1	PLUG, HOLE
26	503848446	1	COVER, ARBOR, RH
27	1960518	2	NUT, Push
28	1960353	2	WASHER, 1/4, BLACK
29	1704873	1	CLAMP
30	1919326	1	WASHER, 5/16, BLACK
31	1705080	1	SPRING
32	1723323	1	VINYL CAP
33	1916964	2	LOCKWASHER, 1/4
34	1916622	2	NUT, Hex, 1/4-20
35	1706709	1	ROD, DEFLECTOR, FRONT
36	1705449	1	DEFLECTOR, PLASTIC

Footnotes

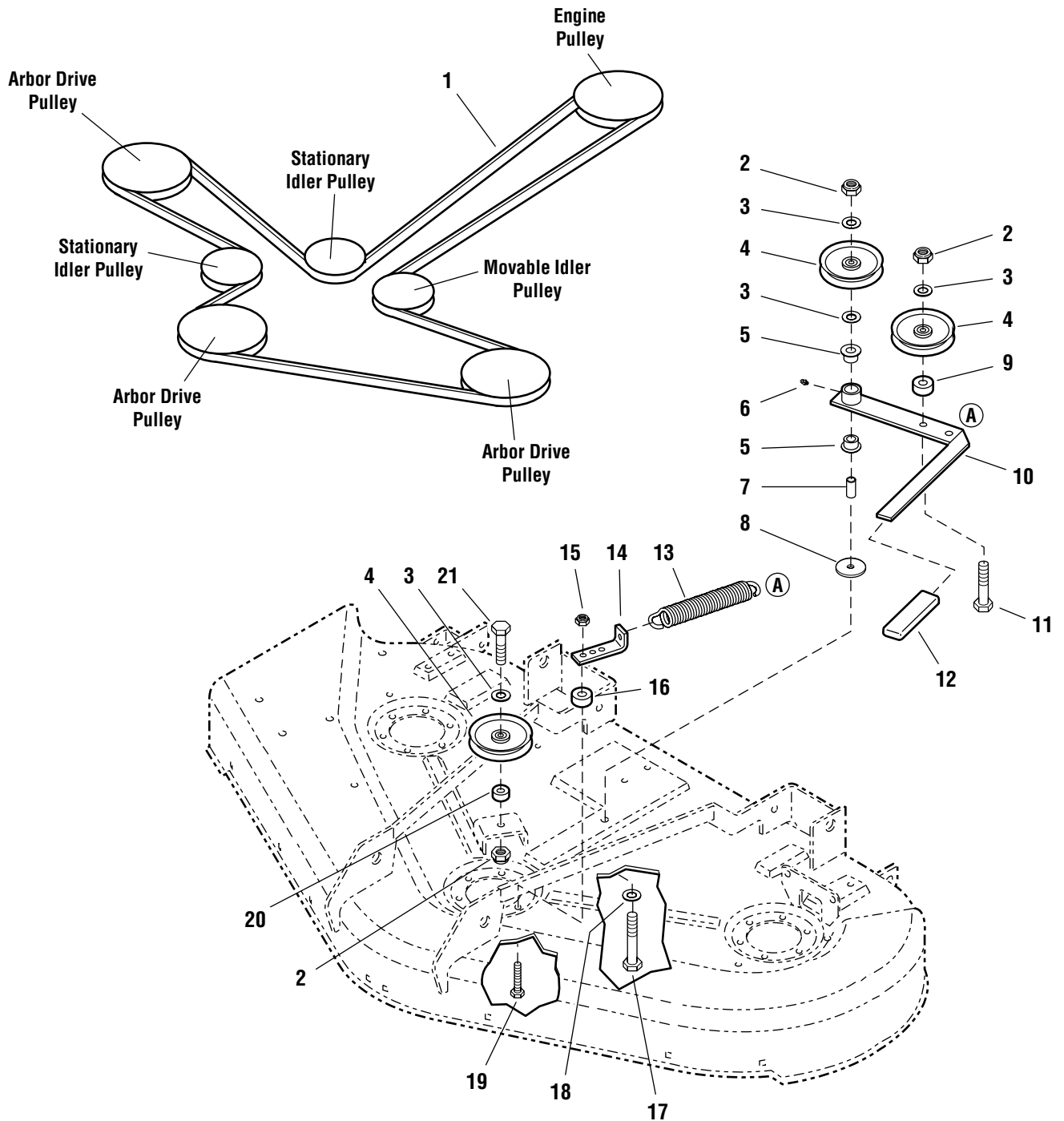
The above parts group applies to the following Mfg. Nos.:

1694456 - 44" Mower
1694459 - 44" Mower
1694457 - 50" Mower
1694461 - 50" Mower

44" & 50" Mower Deck - Belt & Idler Group

FI0028

NOTE: Unless noted otherwise, use the standard hardware torque specification chart.



The above parts group applies to the following Mfg. Nos.:

- 1694456 - 44" Mower
- 1694459 - 44" Mower
- 1694457 - 50" Mower
- 1694461 - 50" Mower

44" & 50" Mower Deck - Belt & Idler Group

REF NO.	PART NO.	QTY.	DESCRIPTION
1	1703372	1	BELT, (FOR 44" DECKS)
1	1724507	1	BELT, (FOR 50" DECKS)
2	5025096	3	NUT, Hex Nylon Lock, 3/8-16
3	5025156	4	WASHER, FLAT, 3/8
4	1724387	3	PULLEY, Idler
5	1676148	2	BUSHING, 5/8 X 3/4 X 13/32, POWDER METAL
6	5020095	1	FITTING, Grease
7	1674669	1	SPACER
8	5045139	1	WASHER, Retaining
9	5047125	1	SPACER, 3/8 X 1 X 7/8
10	503848341	1	IDLER ARM
11	502501318	1	CAPSCREW, Hex Head, 3/8-16 X 2-1/4
12	5025510	1	GRIP, FOAM
13	1715435	1	SPRING
14	503848383	1	SPRING ANCHOR
15	5025057	1	NUT, Hex Nylon Lock, 5/16-18
16	5045023	1	SPACER, 1/2 X 1 X 7/16
17	502501322	1	CAPSCREW, Hex Head, 3/8-16 X 2-3/4
18	1924356	1	WASHER
19	502505512	1	CAPSCREW, Hex Head, Taptite Flange Lock, 5/16-18 X 1-1/2
20	5044960009	1	SPACER
21	502501314	1	CAPSCREW, Hex Head, 3/8-16 X 1-3/4

Footnotes

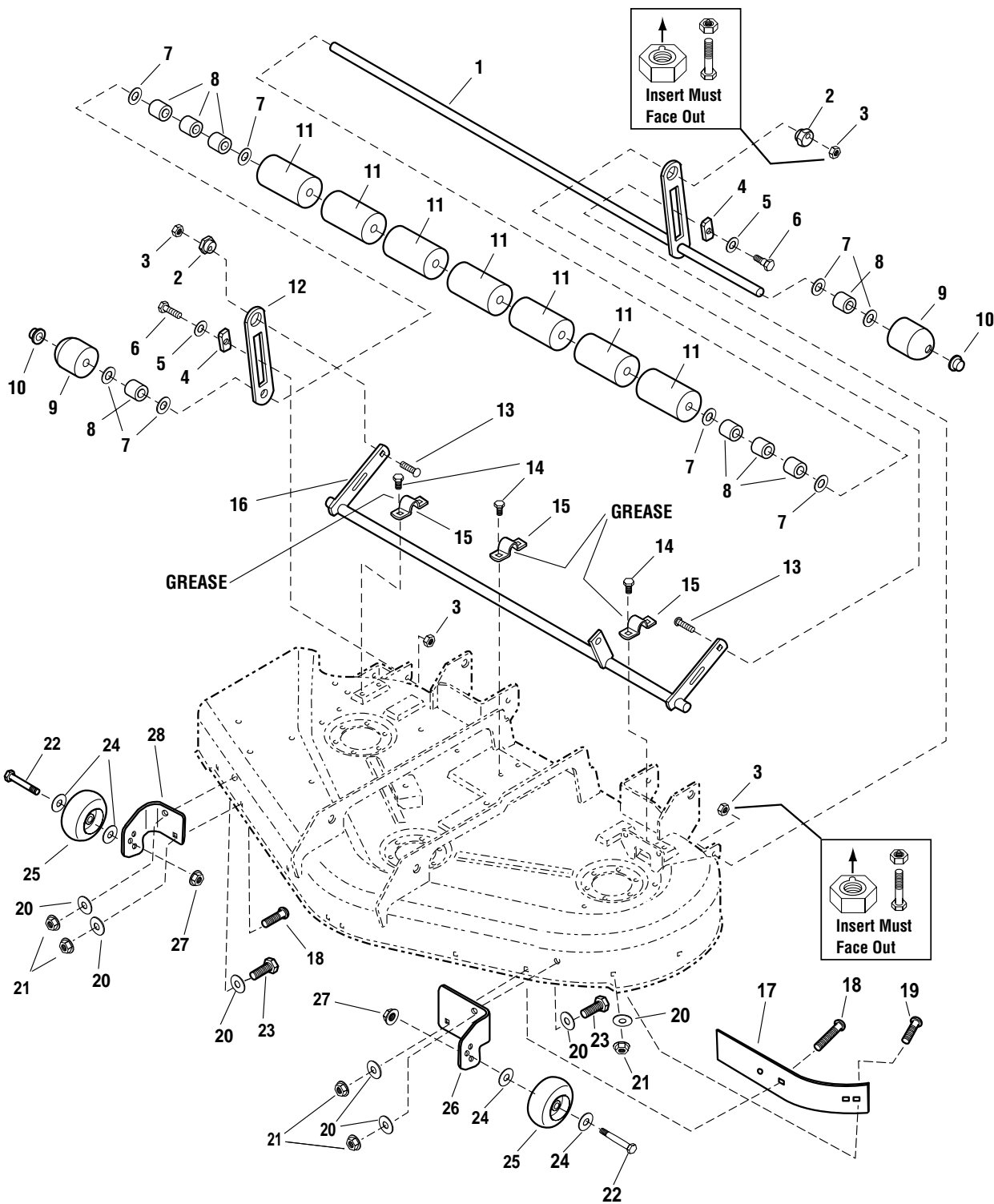
The above parts group applies to the following Mfg. Nos.:

1694456 - 44" Mower
1694459 - 44" Mower
1694457 - 50" Mower
1694461 - 50" Mower

44" Mower Deck - Roller Bar Group

FI0029

NOTE: Unless noted otherwise,
use the standard hardware torque
specification chart.



The above parts group applies to the following Mfg. Nos.:

- 1694456 - 44" Mower
- 1694459 - 44" Mower

44" Mower Deck - Roller Bar Group

REF NO.	PART NO.	QTY.	DESCRIPTION
1	503848676	1	SHAFT, ROLLER, 44"
2	1704082	2	NUT, ADJUSTER
3	960641	4	NUT, Hex Aluminum Insert Lock, 3/8-16
4	1677507	2	SLIDE
5	1924361	2	WASHER, PLAIN, 1/2
6	172622	2	BOLT, Shoulder, 3/8-16
7	1924366	8	WASHER, .661 ID X 1.12 OD X .11, BLACK
8	1602946	8	SPACER, 25/64 X 13/16 X 13/16, STEEL, BLACK
9	1717675	2	ROLLER, ROUNDED
10	1960520	2	NUT, Push
11	1668513	7	ROLLER
12	1719658	1	BAR, ROLLER
13	1931352	2	BOLT, Carriage, 3/8-16 X 1-1/2
14	1664847	6	CAPSCREW, Hex Head Taptite, 5/16-18 X 3/4
15	1665374	3	STRAP
16	503848672	1	SHAFT, DECK LIFT, 44"
17	1724538	1	SHORT BLOWOUT BAFFLE
18	50251458	2	BOLT, Carriage, 5/16-18 X 1
19	50251456	1	BOLT, Carriage, 5/16-18 X 3/4
20	5025155	7	WASHER, 5/16, PLAIN, SAE
21	5025057	5	NUT, 5/16-18, Hex, Nylon Lock
22	108765	2	BOLT, REAR WHEEL
23	50250118	2	CAPSCREW, Hex Head, 5/16-18 X 1
24	1960027	4	WASHER
25	1714760	2	GAUGE WHEEL
26	503849017	1	BRACKET, Gauge Wheel, LH
27	1930645	2	NUT, FLANGE, SIDELOCK, 3/8-16
28	503849018	1	BRACKET, Gauge Wheel, RH

Footnotes

The above parts group applies to the following Mfg. Nos.:

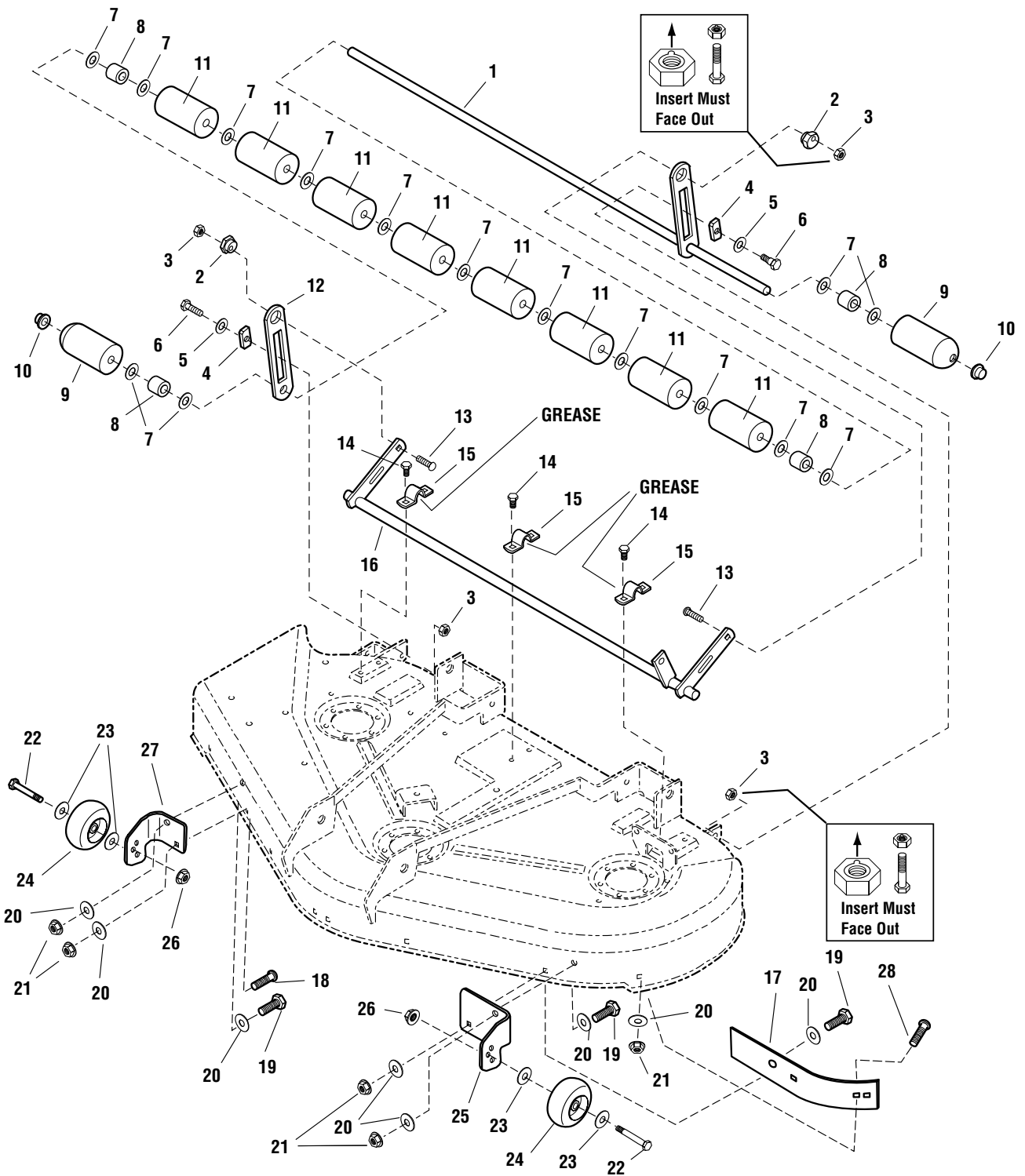
1694456 - 44" Mower

1694459 - 44" Mower

50" Mower Deck - Roller Bar Group

FI0030

NOTE: Unless noted otherwise,
use the standard hardware torque
specification chart.



The above parts group applies to the following Mfg. Nos.:

1694457 - 50" Mower

1694461 - 50" Mower

50" Mower Deck - Roller Bar Group

REF NO.	PART NO.	QTY.	DESCRIPTION
1	503848746	1	SHAFT, ROLLER, 50"
2	1704082	2	NUT, ADJUSTER
3	960641	4	NUT, Hex Aluminum Insert Lock, 3/8-16
4	1677507	2	SLIDE
5	1924361	2	WASHER, PLAIN, 1/2
6	172622	2	BOLT, Shoulder, 3/8-16
7	1924366	15	WASHER, .661 ID X 1.12 OD X .11, BLACK
8	1709195	8	SPACER-0.666 ID X 0.876OD X 1.25 LG SPLIT BLK
9	1722036	2	ROLLER, Rounded
10	1960520	2	NUT, Push
11	1668513	8	ROLLER
12	1719658	1	BAR, Roller
13	1931352	2	BOLT, Carriage, 3/8-16 X 1-1/2
14	1664847	6	CAPSCREW, Hex Head Taptite, 5/16-18 X 3/4
15	1665374	3	STRAP
16	503848674	1	SHAFT, Deck Lift, 50"
17	1724538	1	BAFFLE, Short Blowout
18	50251458	1	BOLT, Carriage, 5/16-18 X 1
19	50250118	3	CAPSCREW, Hex Head, 5/16-18 X 1
20	5025155	8	WASHER, 5/16, PLAIN, SAE
21	5025057	5	NUT, 5/16-18, Hex, Nylon Lock
22	108765	2	BOLT, Rear Wheel
23	1960027	4	WASHER
24	1714760	2	WHEEL, Gauge
25	504849017	1	BRACKET, Gauge Wheel, LH
26	1930645	2	NUT, Flange, Sidelock, 3/8-16
27	504849018	1	BRACKET, Gauge Wheel, RH
28	50251456	1	BOLT, Carriage, 5/16-18 X 3/4

Footnotes

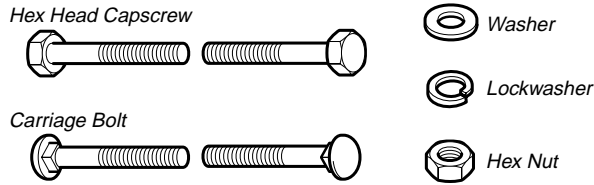
The above parts group applies to the following Mfg. Nos.:

1694457 - 50" Mower

1694461 - 50" Mower

Hardware Identification & Torque Specifications

Common Hardware Types

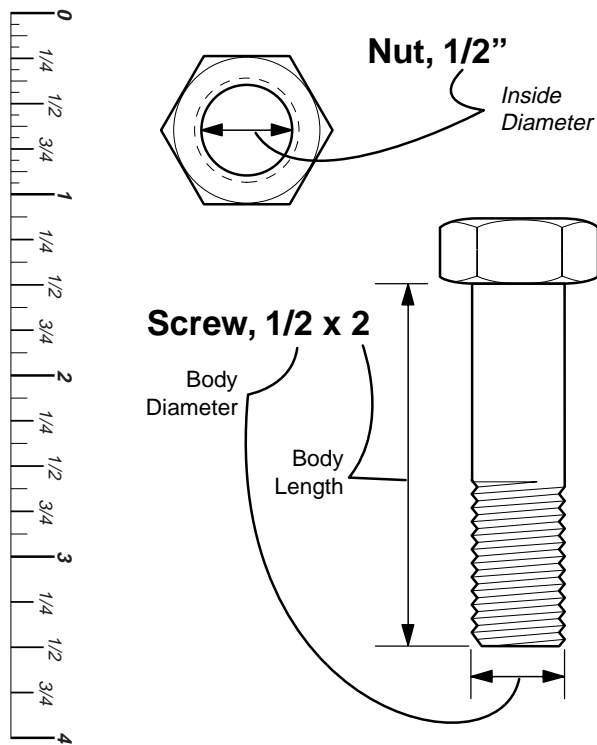


Standard Hardware Sizing

When a washer or nut is identified as **1/2"**, this is the *Nominal size*, meaning the *inside diameter* is 1/2 inch; if a second number is present it represents the *threads per inch*

When bolt or capscrew is identified as **1/2 - 16 x 2"**, this means the *Nominal size*, or *body diameter* is 1/2 inch; the second number represents the *threads per inch* (16 in this example, and the final number is the *body length* of the bolt or screw (in this example 2 inches long).

The guides and ruler furnished below are designed to help you select the appropriate hardware and tools.



Torque Specification Chart

FOR STANDARD MACHINE HARDWARE (Tolerance $\pm 20\%$)

Hardware Grade	No Marks SAE Grade 2		SAE Grade 5		SAE Grade 8	
	in/lbs ft/lbs	Nm.	in/lbs ft/lbs	Nm.	in/lbs ft/lbs	Nm.
8-32	19	2.1	30	3.4	41	4.6
8-36	20	2.3	31	3.5	43	4.9
10-24	27	3.1	43	4.9	60	6.8
10-32	31	3.5	49	5.5	68	7.7
1/4-20	66	7.6	8	10.9	12	16.3
1/4-28	76	8.6	10	13.6	14	19.0
5/16-18	11	15.0	17	23.1	25	34.0
5/16-24	12	16.3	19	25.8	27	34.0
3/8-16	20	27.2	30	40.8	45	61.2
3/8-24	23	31.3	35	47.6	50	68.0
7/16-14	30	40.8	50	68.0	70	95.2
7/16-20	35	47.6	55	74.8	80	108.8
1/2-13	50	68.0	75	102.0	110	149.6
1/2-20	55	74.8	90	122.4	120	163.2
9/16-12	65	88.4	110	149.6	150	204.0
9/16-18	75	102.0	120	163.2	170	231.2
5/8-11	90	122.4	150	204.0	220	299.2
5/8-18	100	136	180	244.8	240	326.4
3/4-10	160	217.6	260	353.6	386	525.0
3/4-16	180	244.8	300	408.0	420	571.2
7/8-9	140	190.4	400	544.0	600	816.0
7/8-14	155	210.8	440	598.4	660	897.6
1-8	220	299.2	580	788.8	900	1,244.0
1-12	240	326.4	640	870.4	1,000	1,360.0

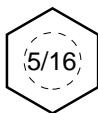
NOTES

- These torque values are to be used for all hardware excluding: locknuts, self-tapping screws, thread forming screws, sheet metal screws and socket head setscrews.
- Recommended seating torque values for locknuts:
 - for prevailing torque locknuts - use 65% of grade 5 torques.
 - for flange whizlock nuts and screws - use 135% of grade 5 torques.
- Unless otherwise noted on assembly drawings, all torque values must meet this specification.

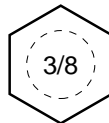
Wrench & Fastener Size Guide



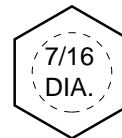
1/4" Bolt or Nut
Wrench—7/16"



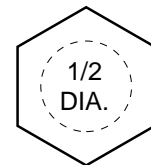
5/16" Bolt or Nut
Wrench—1/2"



3/8" Bolt or Nut
Wrench—9/16"



7/16" Bolt or Nut
Wrench (Bolt)—5/8"
Wrench (Nut)—11/16"



1/2" Bolt or Nut
Wrench—3/4"

Simplicity

MANUFACTURING, INC.
500 N. Spring Street / PO Box 997
Port Washington, WI 53074-0997 USA

www.simplicitymfg.com

© Copyright 2003 Simplicity Manufacturing, Inc.
All Rights Reserved. Printed In USA.

