

Simplicity®

**INSTRUCTIONS
and
PARTS LIST**

for 450
575
600

ARTICLE 990152
ELECTRIC STARTER
for
WONDER BOY

The electric starter kit is an optional extra, designed for your convenience. All components are designed to get the maximum number of starts from the battery. To obtain the best performance it is best to store the unit in the shade or under shed in warm weather to reduce internal battery discharge. When winter approaches keep the battery fully charged to prevent freezing of the electrolyte. To get the greatest number of starts engage the switch for shortest time necessary to start the motor. Periodically inspect insulation of starter cables to see that the cable does not become frayed. If it becomes necessary to do any work on the electric starter system, be sure to disconnect the battery first.

Before installing the electric starter, read the instructions carefully. For purposes of illustration, the seat and hood have been removed. It is not necessary to remove these for field installation, but the hood should be lifted back to allow access to the engine and engine pulley.

PACKING LIST

The electric starter kit is shipped in three cartons.

INSTALLING THE STARTER KIT

1. Remove the three bolts (1) and install battery bracket assembly (4) as shown. Replace the bolts with heads toward the battery and tighten the nuts securely.

2. Refer to Fig. 1. The rod guide assembly (9) is slipped over the implement clutch lever (10) and is held in place by a set collar (11).

3. Remove the belt guide assembly (22) and the implement power take-off belt (19). Loosen set screw and remove implement power take-off pulley (21), then place starter pulley (20) on engine shaft, with its set screw toward the outside. The starter pulley fits against the engine drive pulley, however, check to see that the idler pulley (23) properly clears the starter pulley when the idler is engaged, then tighten starter pulley set screw securely. Replace the power take-off pulley (21) and place the starter belt (18) around the starter pulley. Replace the power take-off belt on its pulleys, then attach the belt guide in its proper position as pictured in Fig. 1. Note that the starter belt (18) must be positioned over the belt guide bracket at the rear so it can engage the pulley on the starter motor. Be careful to place the belt guide so that it is the same distance from the belt at each point around its circumference.

4. Hold the starter motor pivot bar (5) against the hood pivot tube (7). Insert the U-pivots (6) around the hood pivot tube (7), lining up the holes with the holes in the motor pivot bar and insert the cotter pins. Push the cotter pins all the way through and spread them enough to hold. The U-pivots should be loose so the starter motor will rock freely and not stick when parts become dirty.

5. Install the starter rod (8) through the starter rod guide (9), and attach black knob. Swing starter motor control arm (17) to position shown in Fig. 1. Install switch body (16) over stud, making sure the copper tube contact is over the stud. Tighten lock nut on stud (14) snug against the copper tube for good electrical contact.

6. Place starter belt (18) over starter motor pulley (24) as shown. In order to get the belt between the pulley and the guard, it may be necessary to loosen the two pulley set screws and move the pulley out. Then re-align the pulleys carefully and re-tighten set screws.

7. Install spring (15) as shown in Fig. 1.

8. Check the starter belt for proper idling by pulling the engine starter rope and observing the starter motor.

Remember THE STARTER MOTOR MUST NOT TURN WITH THE ENGINE EXCEPT WHEN THE SWITCH IS ENGAGED FOR STARTING. IF THE STARTER MOTOR IS ALLOWED TO TURN WITH THE ENGINE AFTER THE ENGINE STARTS PERMANENT DAMAGE TO THE STARTER MOTOR WILL LIKELY RESULT.

It is a good idea to visually re-check the belt for proper idling from time to time while operating the Wonder Boy.

9. Remove the first nut and lock washer from the terminal on top of the starter motor, then attach the rubber protector end of cable (3) to the terminal and secure with the lockwasher and nut. Place the rubber protector in proper position over the terminal as shown in Fig. 1. Thread the cable from the starter motor, over the right side of the hood pivot tube, under the recoil starter and up along the side of the flange of the transmission case.

10. Cable (13) is fastened to the switch at the factory. Thread cable over the starter rod. Form a generous loop in front of the gas tank, then run cable under the seat bracket. NOTE: Be sure the loop in front of the gas tank is ample to prevent rubbing the cable against the corner of the tank when starting the engine. Both cables are secured with clamps, one on each side of the right side plate. Be sure the gasket insulators are around the cables at the point where they fit into the clamps. Place cable (13) into inside clamp, cable (3) into outside clamp, and bolt clamps to side plate at top rear hole of the right side plate, with head of bolt to the outside. Tighten the nut securely.

In order to additionally secure the cable (13), tape it to the starter rod as indicated in Fig. 1.

CHECK CABLES TO MAKE SURE NONE CAN VIBRATE AGAINST METAL PARTS.

11. Prepare the battery in accordance with the instructions packed with it. Pay particular attention to initial charging and re-charging instructions as this starter assembly does not include a generator.

The electric starter kit is an optional extra, designed for your convenience. All components are designed to get the maximum number of starts from the battery. To obtain the best performance it is best to store the unit in the shade or under shed in warm weather to reduce internal battery discharge. When winter approaches keep the battery fully charged to prevent freezing of the electrolyte. To get the greatest number of starts engage the switch for shortest time necessary to start the motor. Periodically inspect insulation of starter cables to see that the cable does not become frayed. If it becomes necessary to do any work on the electric starter system, be sure to disconnect the battery first.

Before installing the electric starter, read the instructions carefully. For purposes of illustration, the seat and hood have been removed. It is not necessary to remove these for field installation, but the hood should be lifted back to allow access to the engine and engine pulley.

PACKING LIST

The electric starter kit is shipped in three cartons.

INSTALLING THE STARTER KIT

1. Remove the three bolts (1) and install battery bracket assembly (4) as shown. Replace the bolts with heads toward the battery and tighten the nuts securely.

2. Refer to Fig. 1. The rod guide assembly (9) is slipped over the implement clutch lever (10) and is held in place by a set collar (11).

3. Remove the belt guide assembly (22) and the implement power take-off belt (19). Loosen set screw and remove implement power take-off pulley (21), then place starter pulley (20) on engine shaft, with its set screw toward the outside. The starter pulley fits against the engine drive pulley, however, check to see that the idler pulley (23) properly clears the starter pulley when the idler is engaged, then tighten starter pulley set screw securely. Replace the power take-off pulley (21) and place the starter belt (18) around the starter pulley. Replace the power take-off belt on its pulleys, then attach the belt guide in its proper position as pictured in Fig. 1. Note that the starter belt (18) must be positioned over the belt guide bracket at the rear so it can engage the pulley on the starter motor. Be careful to place the belt guide so that it is the same distance from the belt at each point around its circumference.

4. Hold the starter motor pivot bar (5) against the hood pivot tube (7). Insert the U-pivots (6) around the hood pivot tube (7), lining up the holes with the holes in the motor pivot bar and insert the cotter pins. Push the cotter pins all the way through and spread them enough to hold. The U-pivots should be loose so the starter motor will rock freely and not stick when parts become dirty.

5. Install the starter rod (8) through the starter rod guide (9), and attach black knob. Swing starter motor control arm (17) to position shown in Fig. 1. Install switch body (16) over stud, making sure the copper tube contact is over the stud. Tighten lock nut on stud (14) snug against the copper tube for good electrical contact.

6. Place starter belt (18) over starter motor pulley (24) as shown. In order to get the belt between the pulley and the guard, it may be necessary to loosen the two pulley set screws and move the pulley out. Then re-align the pulleys carefully and re-tighten set screws.

7. Install spring (15) as shown in Fig. 1.

8. Check the starter belt for proper idling by pulling the engine starter rope and observing the starter motor.

Remember THE STARTER MOTOR MUST NOT TURN WITH THE ENGINE EXCEPT WHEN THE SWITCH IS ENGAGED FOR STARTING. IF THE STARTER MOTOR IS ALLOWED TO TURN WITH THE ENGINE AFTER THE ENGINE STARTS PERMANENT DAMAGE TO THE STARTER MOTOR WILL LIKELY RESULT.

It is a good idea to visually re-check the belt for proper idling from time to time while operating the Wonder Boy.

9. Remove the first nut and lock washer from the terminal on top of the starter motor, then attach the rubber protector end of cable (3) to the terminal and secure with the lockwasher and nut. Place the rubber protector in proper position over the terminal as shown in Fig. 1. Thread the cable from the starter motor, over the right side of the hood pivot tube, under the recoil starter and up along the side of the flange of the transmission case.

10. Cable (13) is fastened to the switch at the factory. Thread cable over the starter rod. Form a generous loop in front of the gas tank, then run cable under the seat bracket. NOTE: Be sure the loop in front of the gas tank is ample to prevent rubbing the cable against the corner of the tank when starting the engine. Both cables are secured with clamps, one on each side of the right side plate. Be sure the gasket insulators are around the cables at the point where they fit into the clamps. Place cable (13) into inside clamp, cable (3) into outside clamp, and bolt clamps to side plate at top rear hole of the right side plate, with head of bolt to the outside. Tighten the nut securely.

In order to additionally secure the cable (13), tape it to the starter rod as indicated in Fig. 1.

CHECK CABLES TO MAKE SURE NONE CAN VIBRATE AGAINST METAL PARTS.

11. Prepare the battery in accordance with the instructions packed with it. Pay particular attention to initial charging and re-charging instructions as this starter assembly does not include a generator.

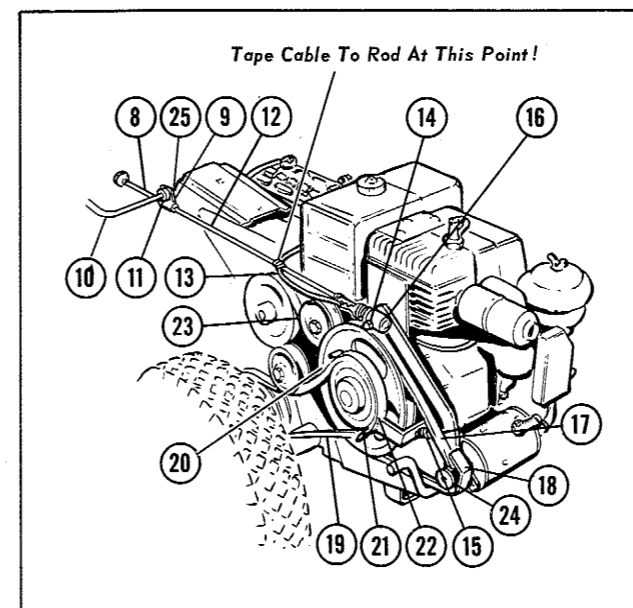


Figure 1

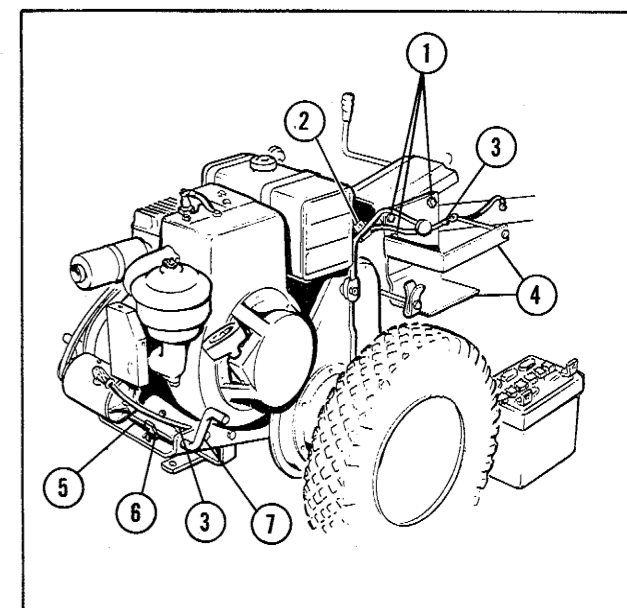


Figure 2

12. Place battery in its bracket with the terminals nearest the operators seat. Secure the battery by inserting the long 1/4" diameter bolt into the bracket holes with its head to the inside and tightening the wing nut provided.

13. Connect cable (13) to the front terminal and cable (3) to the rear terminal. Use the two 1/4" cap screws and nuts provided and tighten securely.

INSTRUCTIONS FOR USE

Before starting the engine, be sure implement clutch lever (10) is released. This prevents excessive current drain from the battery. To start the engine, open the throttle about half way and choke the motor if it is cold. Push the starter rod knob to the rear until belt is tightened and switch is closed. When motor has started, release pressure on starter rod knob and re-adjust choke.

NOTE

NOTE: In order to obtain proper access to the oil filler cap on the rear of the engine base, the starter belt should be disconnected from the starter motor, and spring (15) unhooked from the control arm (17). The starter motor can then be pulled to the rear, thereby providing access to the oil filler cap.

NOTE: The battery furnished with this starter attachment is warranted and serviced only by the battery manufacturer whose name appears on the battery instruction sheet. For any service or other assistance concerning the battery, contact that firm and not the Simplicity Manufacturing Company.

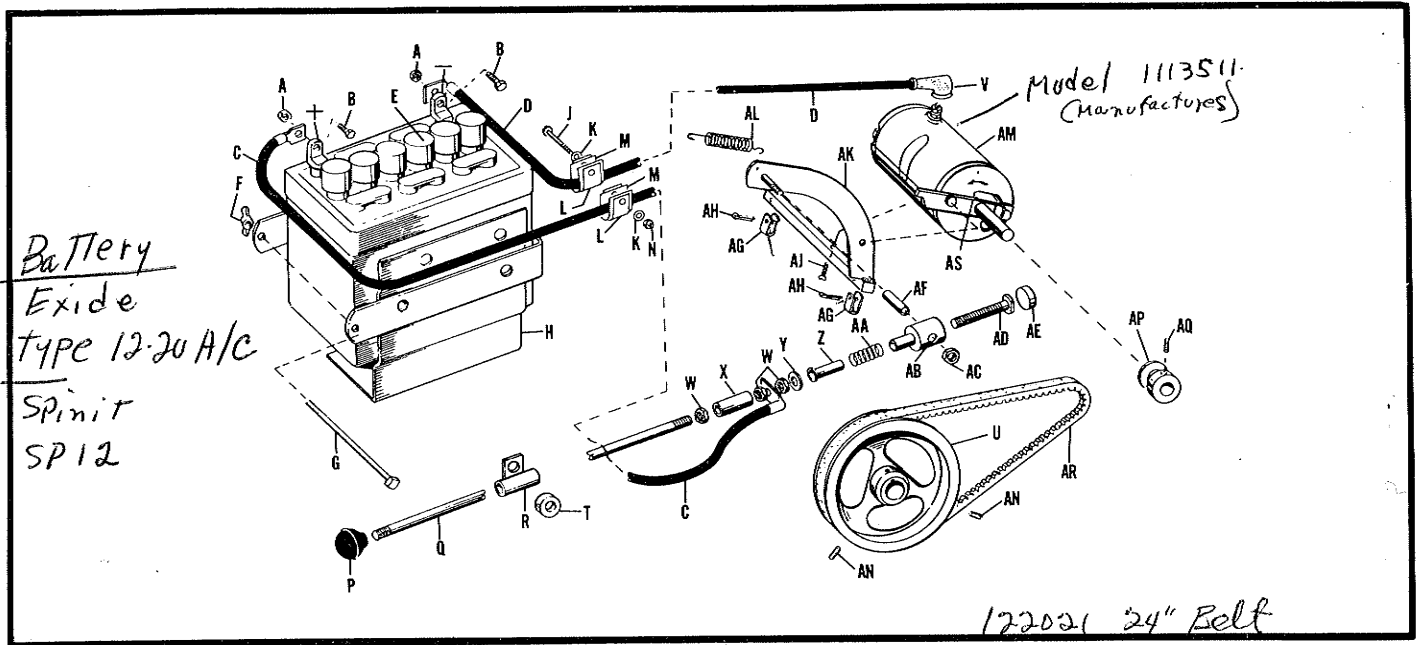
How to Order Repair Parts

The Authorized dealer from whom you purchased your tractor and attachments can supply you with any replacement parts you may need. For prompt service, be sure to see your dealer first. He will furnish the correct parts from his stock or order them for you if necessary. However, you may mail-order directly from the factory. To have your order filled correctly and for prompt service, please furnish the following information:

1. Model, number and year of purchase of tractor or attachment.
2. Part number, description, and quantity of part. (See parts list)

Be sure to include postage with your order. We do not pay transportation charges. Shipping weights are shown. Any excess will be promptly refunded.

We reserve the right to change construction, specifications, prices and terms, without notice and without obligation as to tractors and attachments heretofore shipped.



Mont. Wards Battery 122110 - Riverside

REPAIR PARTS — ELECTRIC STARTER

Order by Part Number

Ref. Letter	Part No.	Description	Ship Wt.	
			Lbs.	Oz.
A	718004	Hex Nut, Full. 1/4"-20 NC		**
B	715010	Capscrew, Hex Hd., 1/4-20 x 5/8		**
C	122004	Cable	2	
D	122029	Cable Assembly	2	4
E	*122001	Battery (Purchase from Bat. Mfg.)		
F	718007	Wing Nut, Lock, 1/4"-20 NC		**
G	701002	Machine Bolt, 1/4"-20 NC x 6" lg		**
H	122030	Bracket Assembly, Battery	1	6
J	710001	Screw, Rd. Hd. Mach., #10-24 x 1 1/2" lg.		**
K	719007	Washer, Plain, 3/16" Std.		**
L	122024	Clip, Cable	6	
M	122025	Lining, Clip	4	
N	717023	Hex Nut, Lock, #10-24		**
P	122005	Knob, Starter		4
Q	122031	Rod, Starter	1	
R	122032	Guide Assembly, Rod	1	
T	122067	Set Collar		**
U	122038	Pulley, Engine	3	
V	122023	Cover, Terminal		4
W	717011	Hex Nut, Jam, 5/16"-18 NC		**
X	122009	Insulator		5

Ref. Letter	Part No.	Description	Ship Wt.	
			Lbs.	Oz.
Y	719002	Washer, Plain, 5/16" Std.		**
Z	122013	Spacer		4
AA	122015	Spring		2
AB	122010	Body, Switch		8
AC	717511	Nut, Hex, Full Lock, 5/16"-18		**
AD	122012	Bolt, Contact		5
AE	122011	Plug, Switch Body	1	
AF	122014	Contact		2
AG	122019	Strap, Motor Support		4
AH	722013	Pin, Cotter		**
AJ	715003	Socket Screw, 1/4"-20 NC x 3/4		**
AK	122034	Lever Assembly, Belt Tension	2	
AL	122064	Spring		8
AM	122026	Motor, Starter, (see note)	10	8
AN	713501	Screw, Hex. Socket Cup Point Set, 5/16"-18 NC x 1/2" lg.		**
AP	122020	Pulley, Motor	1	
AQ	713505	Screw, Hex. Socket Cup Point Set, 1/4-20 NC x 5/16" lg.		**
AR	122039	"V" Belt, Starter 24" lg. Cog type 2		4
AS	122061	Belt Stop Assembly 22"		

NOTE: Purchase parts for 122026 Starter Motor from United Motor Service !
 * SIMPLICITY does not stock replacement batteries. Obtain locally or from Wisco Division, 1222 18th St., Racine, Wis.

** Purchase locally.