

# Simplicity

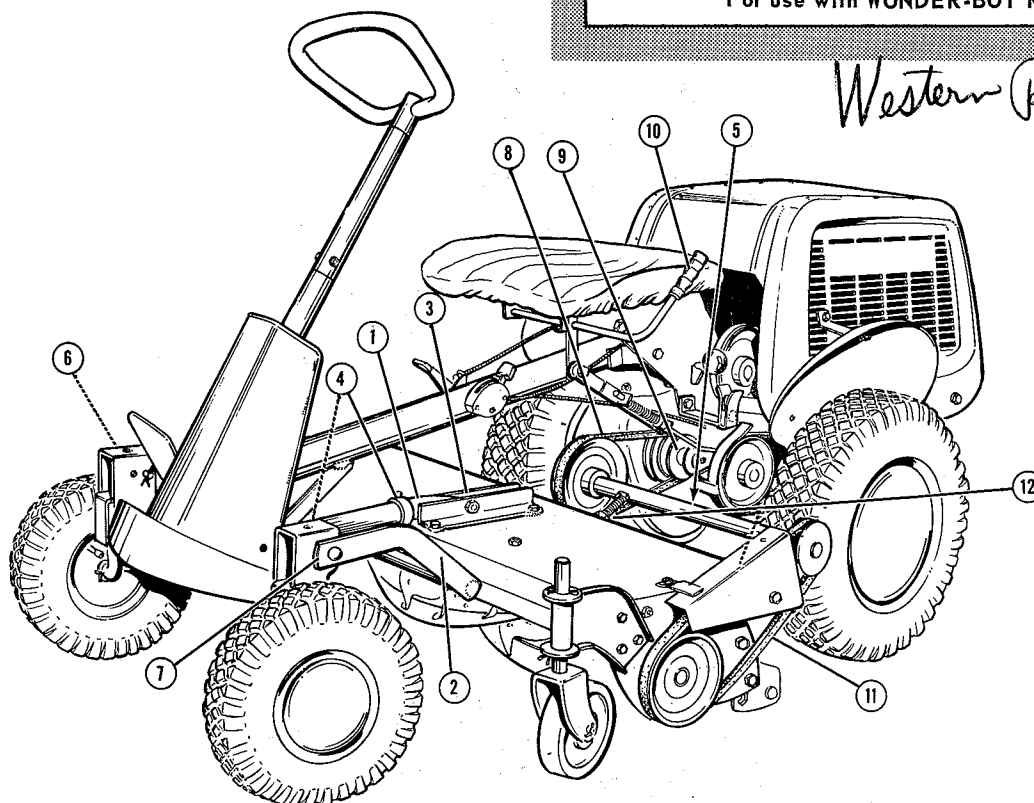
REG. U.S. PAT. OFF.

## 30" REEL MOWER

ARTICLE 990183

For use with WONDER-BOY Riders

*Western Reel Mower*



### ASSEMBLY

1. For shipping purposes, the single draw bar ( pivot pin ) ( 1 ) and the double draw bar ( 2 ) are included separately in the mower carton. Attach the single draw bar ( 1 ) to pivot bracket assembly ( 3 ) as shown.

2. Attach the double draw bar ( 2 ) to single draw bar ( 1 ) and secure with set collars ( 4 ) as shown.

3. Attach the mower to Wonder-Boy as shown. Attach the right arm ( 6 ) and the left arm ( 7 ) to the frame. Be sure to insert the spring clips into the holes in the pins and push them all the way through.

4. Mount the mower belt ( 8 ) over the mower pulley and power take-off shaft pulley as shown. **NOTE:** The power take-off shaft ( 9 ) on the Wonder-Boy 600 has a double pulley instead of the single pulley. When attaching the 30" reel mower to the Model 600, the drive belt ( 8 ) must be placed on the smaller pulley. Notice that the power take-off shaft ( 9 ) on the Wonder-Boy is spring loaded to provide proper belt tension on the mower belt.

5. For additional belt adjustment, move the set collars ( 4 ) on single draw bar ( 1 ). Always remember that the V belt should be adjusted with minimum amount of tension to drive the reel mower.

6. When installing belt, be sure mower clutch lever ( 10 ) is released and pull forward on spring loaded shaft ( 9 ). **NOTE:** This handle is pushed forward to engage the clutch and is pulled to the rear when disengaging the clutch.

7. When the belt is in position release shaft ( 9 ) and correct tension will be applied on mower drive belt. The mower is now ready for use.

### OPERATION

When you are ready to start mowing, engage the clutch lever and the mower will start. When starting the engine be sure that the lawn mower clutch is disengaged.

### HEIGHT OF CUT ADJUSTMENT

The height of cut is regulated by the rear rollers and the caster wheels. By raising or lowering the rollers and wheels, the height of cut may be adjusted from  $\frac{1}{2}$  to  $2\frac{1}{2}$  inches. Be sure that the roller brackets and wheels are at the same level on both sides.

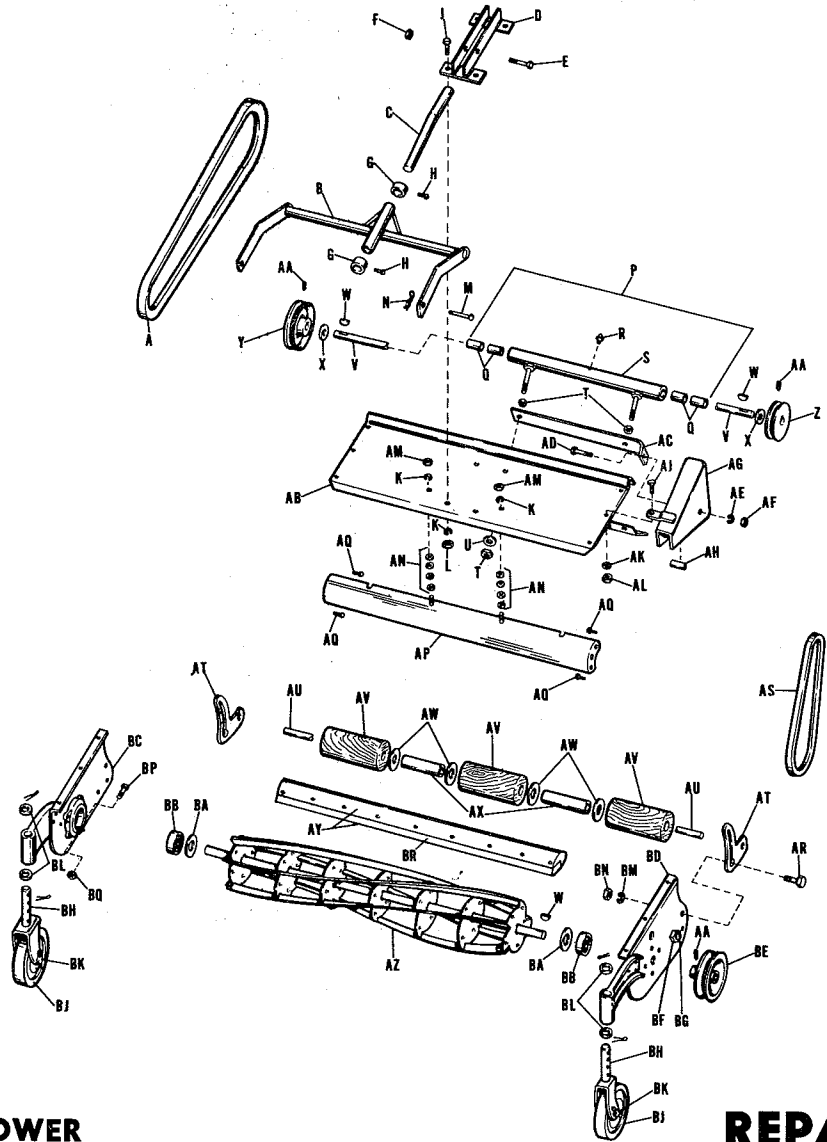
### LUBRICATION

One grease fitting ( 5 ) on the lawn mower should be greased each time the mower is used. The reel bearings are packed with lubricant and sealed at the factory. No service or lubrication is necessary for the life of the bearings.

When replacing the reel drive belt ( 11 ) remove the belt shield and loosen the nuts ( 12 ) holding the pulley shaft to the mower deck. When the new belt is installed, tighten the nuts ( 12 ) making sure the pulley shaft is parallel to mower deck. Replace the belt shield.

### BLADE ADJUSTMENT

We strongly advise against anyone adjusting your lawn mower unless he is fully competent to do the job. Any mower is apt to damage itself if it is improperly adjusted. This is especially true if the adjustment is too tight or is uneven. This causes undue wear and strains which can result in broken parts. We again suggest that unless you are competent to adjust your mower, you have it done by a competent Lawn Mower Repair Man.



**30" REEL MOWER**

**REPAIR PARTS**

Ref. Letter	Part No.	Description	Weight	
			Lbs.	Oz.
A 28"	109061	V-Belt, Cross Drive, 28" Long	1	
B	109040	Hitch Assembly	9	8
C	109077	Pin, Pivot	2	
D	109080	Pivot Bracket Assembly	6	
E	105047	Capscrew, Hex Head		
F	717519	Locknut, Hex		
G	8211005	Set Collar		3
H	713006	Setscrew		
J		Capscrew, 5/16-18 x 5/8		
K	720001	Washer, Lock, 5/16"		
L	717003	Nut, Full Hex, 5/16-18		
M	100028	Pin	4	
N	8161045	Spring Clip	2	
P	109056	Housing and Bearing Assembly	2	6
Q	8261052	Bushing		3
R	1792	Grease Fitting		
S	109046	Housing Assembly	2	6
T	717006	Nut, Full Hex, 1/2-13		
U		Washer, Plain 1/2"		
V	109051	Pulley Shaft	2	8
W	725003	Woodruff Key, 3/16" x 3/4, #9		
X	153079	Washer		
Y	109079	Pulley, Cross Drive	3	8
Z	108056	Pulley	1	8
AA		Setscrew, 5/16-18 x 3/8		
AB	109006	Deck-30"	8	
AC	109057	Bar	2	6
AD		Capscrew, Hex Hd., 3/8-16 x 2 1/2		
AE		Lockwasher, 3/8"		
AF	717003	Nut, Full Hex, 3/8-16		
AG	109066	Guard, Belt	2	
AH	8061069	Spacer, Bearing		8

Ref. Letter	Part No.	Description	Weight	
			Lbs.	Oz.
AJ	706010	Capscrew, Hex Hd., 1/4-20 x 3/4		
AK		Washer, Shakeproof, 1/4		
AL		Nut, Jam, 1/4-20		
AM		Nut, Full Hex., 5/16-24		
AN	719002	Washer, Plain, 5/16		
AP	10652	Brush Bar Assembly		8
AQ	997839	Capscrew, Hex Hd., 5/16-24 x 5/8		
AR		Bolt, Carriage, 3/8-16 x 3/4		
AS 33"	109067	V-Belt, Reel Drive, 33" long	1	10
AT	753	Bracket, Roller		5
AU	756	Shaft, Roller	2	8
AV	754	Roller		13
AW	737	Washer, Roller		1
AX	757	Spacer, Roller	1	4
AY	10770	Cutting Bar & Blade Assembly	15	
AZ	10515	Reel Assembly, 30"	18	
BA	478	Washer, Reel Bearing		1
BB	20257	Bearing, Ball		3
BC	10648	Side Frame Assembly, Right Hand	4	
BD	10647	Side Frame Assembly, Left Hand	4	
BE	121124	Pulley, Reel	2	6
BF	4114	Cam, Adjusting		3
BG No #	997855	Capscrew, Hex Hd., 3/8-24 x 7/8		
BH	20785	Caster Yolk Assembly	3	1
BJ	512	Wheel, Caster, w/Bearing	3	5
BK	513	Axle, Caster	3	
BL No #	996415	Washer		
BM		Washer, Lock, 3/8		
BN		Nut, Hex, 3/8-16		
BP		Screw, Fillister Hd., 1/4-20 x 3/4		
BQ		Nut, Square, 1/4-20		
BR	676	Cutter Bar Blade	2	

142 order by description no part # available