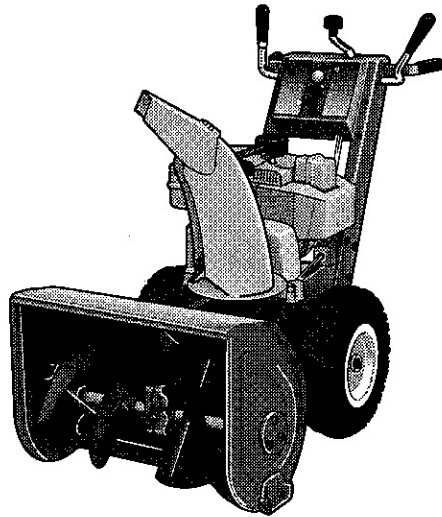


LARGE FRAME SNOWTHROWERS

with Power Boost

Sno-Away 860

860S
860SE



PARTS MANUAL

Product Identification:

When ordering parts, keep your products serial number and manufacturer's number in mind. Variations may occur in a part between early & later model products, causing the product serial number to be listed in the parts description whenever these variations occur.

Record your I.D. numbers here for quick, future reference.

Product Mfg. No. _____ S/N _____ Mower Mfg. No. _____ S/N _____

Attention:

Standard torques appear in a chart at the end of the manual, while important individual torques are given on specific parts drawings.

CRITICAL and MAJOR notations point out important facts or instructions which relate to personal safety and proper machine operation. Any CRITICAL notation **C** which may appear in this book, pinpoints characteristics which, if not properly followed, can create a safety hazard. Any MAJOR notation **M** which may appear in this book, marks characteristics which, if not properly followed, may result in operating failure, shortened product life, or greatly reduced quality of the unit. For your convenience, assembly notes are included in parts drawings to assist in repair and assembly of unit.

SIMPLICITY BRAND PRODUCTS

OILS - SPECIFICALLY BLENDED OF HIGH QUALITY BASE OILS & ADDITIVES.

Special Worm Gear Oil: Required for protection of brass gears and mating parts.

- **Cold Weather Worm Gear Oil** for snowthrowers with worm gear drive. 8 Oz. Bottle, Part #1704636, Case of 12-8 Oz. Bottles, Part #1685406.

Multi-Purpose Hydraulic/Transmission Oil for use in most hydraulic applications, and hydrostatic transmissions. Specific Simplicity applications: All hydrostatic transmissions, all bevel gear cases. Case of 12 Quarts, Part #1685516, 2-1/2 Gallon Container, Part #1685539.

SAE 5W-30 SF/CD Cold Weather Engine Oil for use in all four cycle and diesel engines at 30° temp. and under. Case of 12 quarts, Part #1685576.

SAE 15W-40 SF/CD Engine Oil for gas and diesel engines, warm weather; see engine manufacturer recommendations. Case of 12 quarts, Part #1685554.

SAE 30W SG/CC Detergent Engine Oil for use in four cycle lawn and garden engines at operating temp. of 32° and above. Also recommended for use in hydrostatic transmissions where 30W oil is specified. Case of 12 quarts, Part #1685659.

DEGREASER, DEGRIMER, PARTS CLEANER removes grease, oil, dirt and grime without harming paint or decals.

1 Quart w/Trigger Spray	1685619
1 Gallon Bottle	1685621
Extension Sprayer for Gallon Bottle	1685623

TOUCH-UP PAINT keeps equipment in showroom condition.

Spray Cans	Quarts	Daubers-12 Per Ctn.
<i>For Products Built After 8/1/89.</i>		
"Deep Orange" 13 Oz. Can 1685611 Case 12 Cans 1685614	1685612	1685616 Mixed 6 Deep Or., 6 White 1/2 Oz. Bottles
"Gloss Black" 13 Oz. Can 1685639 Case 12 Cans 1685640	1685641	N/A
"White" 13 Oz. Can 103049 Case 12 Cans 1685178	1685032	See Above

Consult decal on equipment for proper color.

AVAILABLE ACCESSORIES:

DESIGNER SEAT COVERS are double stitched, easy care vinyl. Keeps new seats new, makes worn seats look new.

Small Seat Cover w/Pocket, Part #1685540. Fits all Rear Engine Riders, FC, RT Series Tractors.

Large Seat Cover w/Pocket, Part #1685541. Fits all 12.5 & 16 LT and GT Series Tractors.

Seat Cover, Part #1685577. Fits all 18 & 20 GTH Tractors.

PNEUMATIC TIRE SEAL seals all leaks including bead leaks and punctures up to 3/16 inch diameters. Prevents flats for tread life of tire. Available in following amounts.

Case of 12 -11 Oz. Tubes	1685537
Case of 24 -11 Oz. Tubes	1685525
5 Gallon Pail	1685527

HOURLY METER KIT, Part #1685510.

GREASE GUN KIT has 12" flexible hose to get into tight spots with ease. Kit contains: gun and 1-8 Oz. tube of grease. Part #1685510. For replacement tube, order Part #103077.

CHROME "Moon" Hubcaps

4" Rim	163114
6" Rim	156210
8" Rim	156211
10" Rim	1687782
12" Rim	154505

**Extend Equipment Life - Use Only Genuine Simplicity Parts & Accessories
Available at Your Local Simplicity Dealer**

Table of Contents

ENGINE & FRAME GROUP	2
HANDLE & CONTROL GROUP	4
TRACTION DRIVE GROUP	8
AUGER HOUSING & CHUTE GROUP	10
AUGER DRIVE GROUP	12
TIRE & WHEEL GROUP	14
HEADLIGHT KIT (Mfg. Nos. 1691827, 1685459)	14
DECAL GROUP	16
THE "PROTECTOR"® SNOW CAB (Mfg. No. 1690681)	18
DRIFT CUTTER KIT (Mfg. No. 1685189)	20
TORQUE SPECIFICATION CHART	Inside Back Cover

Included in this parts book are the following Manufacturer's Numbers.

SNO-AWAY 860 SNOWTHROWER
MFG. NO. 1691900
MFG. NO. 1691946

MODEL 860SE SNOWTHROWER
MFG. NO. 1691777
MFG. NO. 1691900

MODEL 860S SNOWTHROWER
MFG. NO. 1691778
MFG. NO. 1691946

HEADLIGHT KIT
MFG. NOS. 1685459, 1691827

THE "PROTECTOR" SNOW CAB
MFG. NO. 1690681

DRIFT CUTTER KIT
MFG. NO. 1685189

*8 HP ELECTRIC STARTER
(TECUMSEH ENGINE)
MFG. NO. 1690385

*SOFT CAB OR CANVAS CAB
MFG. NO. 1691780

*Order Whofegoods number and see your local Tecumseh dealer for parts and service.

Use 1 to 3 washers (2 is average) between Ref. Nos. 19 & 20 as needed to assure a centered belt (Ref. No. 26) and no interference between pulleys (Ref. Nos. 9 & 18).

Apply grease to Ignition Switch (Ref. No. 5) terminals and wire harness plug before connecting.

Idler pulley (Ref. No. 9) the long hub should be towards idler arm (Ref. No. 11).

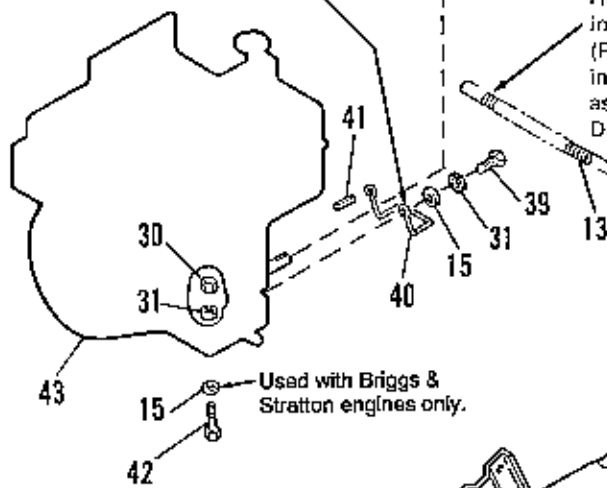
Torque to 10-14 ft. lbs.

Position belt stop (Ref. No. 40) .06/.12 from belt when auger clutch is engaged.

Position idler pulley (Ref. No. 18) at outside edge of slot.

Hook one end of spring into top hole of idler arm (Ref. No. 11) & other end into top hole of pivot arm assy. (Ref. No. 25, Traction Drive Group)

Hook one end of spring (Ref. No. 48) over clutch rod assy. (Ref. No. 20) between depressions & other end over channel end of auger housing assy.



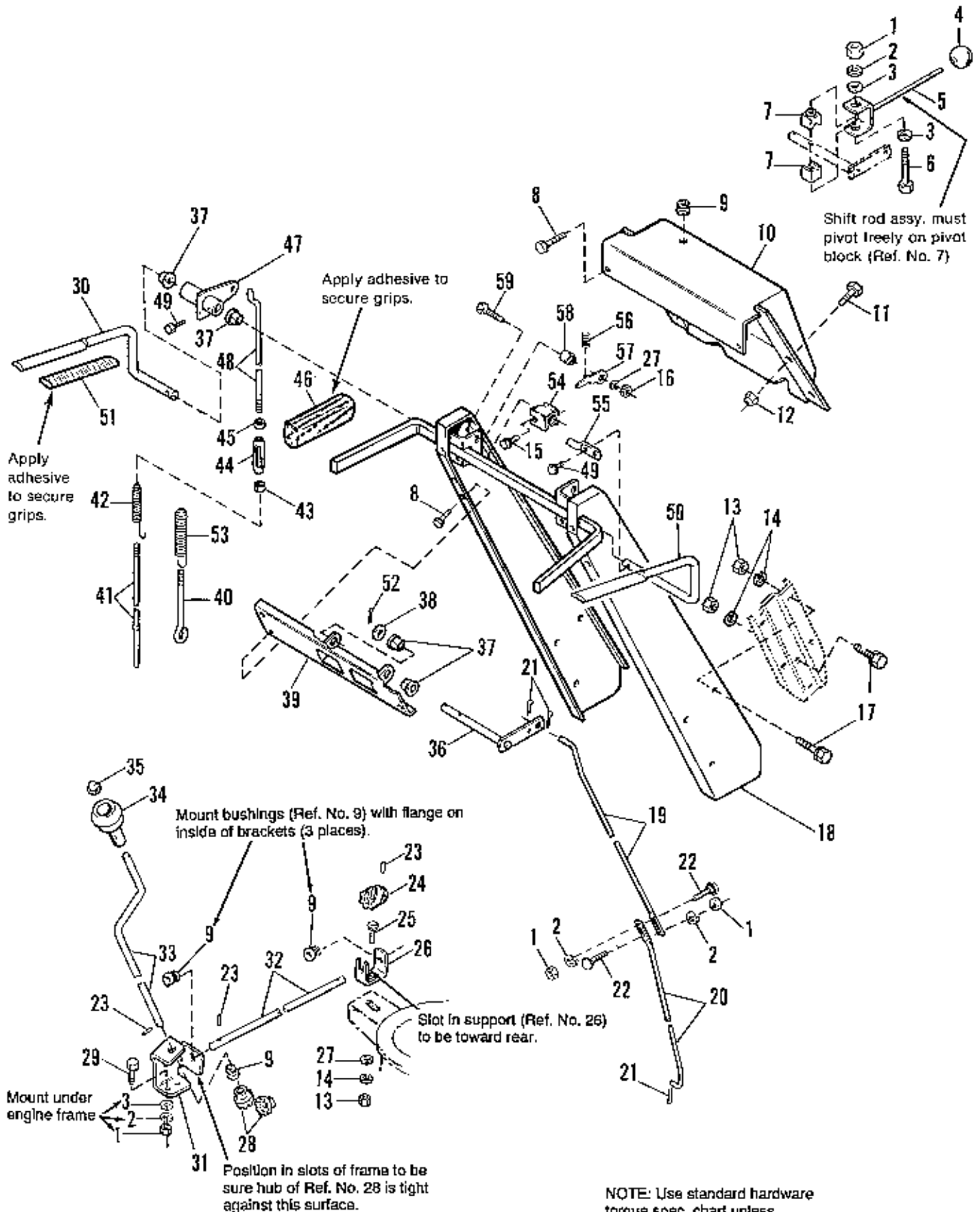
Used with Briggs & Stratton engines only.

Right side only on Mfg. Nos. 1691777 & 1691778 only.

NOTE: Use standard hardware torque spec. chart unless otherwise noted.

Ref. No.	Part No.	Qty.	Description
1	177163	1	SWITCH, Key (Inc. Ref. Nos. 2, 3, 4 & 5) (Electric Start only)
2	122203	1	KEYS (Electric Start only)
3	122234	1	NUT, Hex, 5/8-32 (Electric Start only)
4	918906	1	LOCKWASHER, Int. 5/8 (Electric Start only)
5		1	SWITCH (See Ref No. 1) (Electric Start only)
6	1667700	1	WIRE, Ground (Electric Start only)
7	1918451	2	PIN, Cotter, 1/8 x 3/4
8	1665994	1	PIN
9	1668477	1	PULLEY, Idler
10	1921971	2	CAPSCREW, Hex Hd., 3/8-16 x 1-3/4
11	1703046	1	ARM, Idler, Traction
12	1672732	1	BELT, Traction (Electric Start only)
	1676461	1	BELT, Traction (Manual Start only)
13	1672735	1	SPRING, Idler
14	1927557	4	NUT, Hex, Whizlock, 5/16-18
15	1919326	2	WASHER, Flat, 11/32 (Qty. 6 on Electric Start)
16	1666109	1	PULLEY, Engine (Electric Start only)
	1676493	1	PULLEY, Engine (Manual Start only)
17	1930540	1	SETSCREW, Socket Hd., 5/16-18 x 5/8
18	1708030	1	PULLEY ASSY.
19	157081	1	SPACER
20	1612200	1	CLUTCH ROD & BRAKE ASSY.
21	1664847	4	SCREW, Taptite, 5/16-18 x 3/8
22	1927429	2	SCREW, Taptite, 1/4-20 x 5/8
23	1921968	1	CAPSCREW, Hex Hd., 3/8-16 x 1-3/4 (1691900 & 1691946)
24	1926018	6	NUT, Speed, 1/4-20
25	1924940	3	WASHER, Flat, 13/32
26	1666655	1	BELT, Auger Drive (Electric Start only)
	1676460	1	BELT, Auger Drive (Manual Start only)
27	1667516	1	GUARD, Belt
28	1918249	2	SCREW, Truss Hd., 5/16-18 x 3/4
29	1612458	1	FRAME, Main
30	1931277	4	NUT, Hex, 5/16-18
31	1917356	2	LOCKWASHER, 5/16
32	1930591	4	CAPSCREW, Whizlock, 5/16-18 x 3/4
33	1701595	1	SPRING, Brake
34	1666374	1	COVER, Bottom
35	1927428	4	SCREW, Taptite, 1/4-20 x 3/8
36	1666001	2	BUSHING, Axle
37	935255	2	NUT, Pal, 5/16-18
38	1928731	2	LOCKNUT, Jam, 3/8-16
39	1921515	2	CAPSCREW, Hex. Hd., 5/16-24 x 3/4
40	1668174	1	BELT STOP (Electric Start only)
	1676494	1	BELT STOP (Manual Start only)
41	8221042	1	KEY, 3/16 x 3/16 x 1-1/2 (Electric Start only)
	905856	1	KEY, 1/4 x 1/4 x 1-1/2 (Manual Start only)
42	1922127	4	CAPSCREW, Hex Hd., 5/16-18 x 1-3/4 (Electric Start only)
	1921978	4	CAPSCREW, Hex Hd., 5/16-18 x 2 (Manual Start only)
43	See Note Below	1	ENGINE, Tecumseh, 8 H.P. Electric Start
		1	ENGINE, Briggs & Stratton, 8 H.P. Manual Start
44	1920426	2	LOCKWASHER, Ext. Tooth, 5/16
45	1669198	1	SUPPORT, Tie Bar
46	1928729	4	SCREW, Taptite, 5/16-18 x 3/8 (1691777 & 1691778)

NOTE: Use Simplicity SAE-5W-30 Cold Weather Engine Oil, Part #1685576 (12 qts./case)

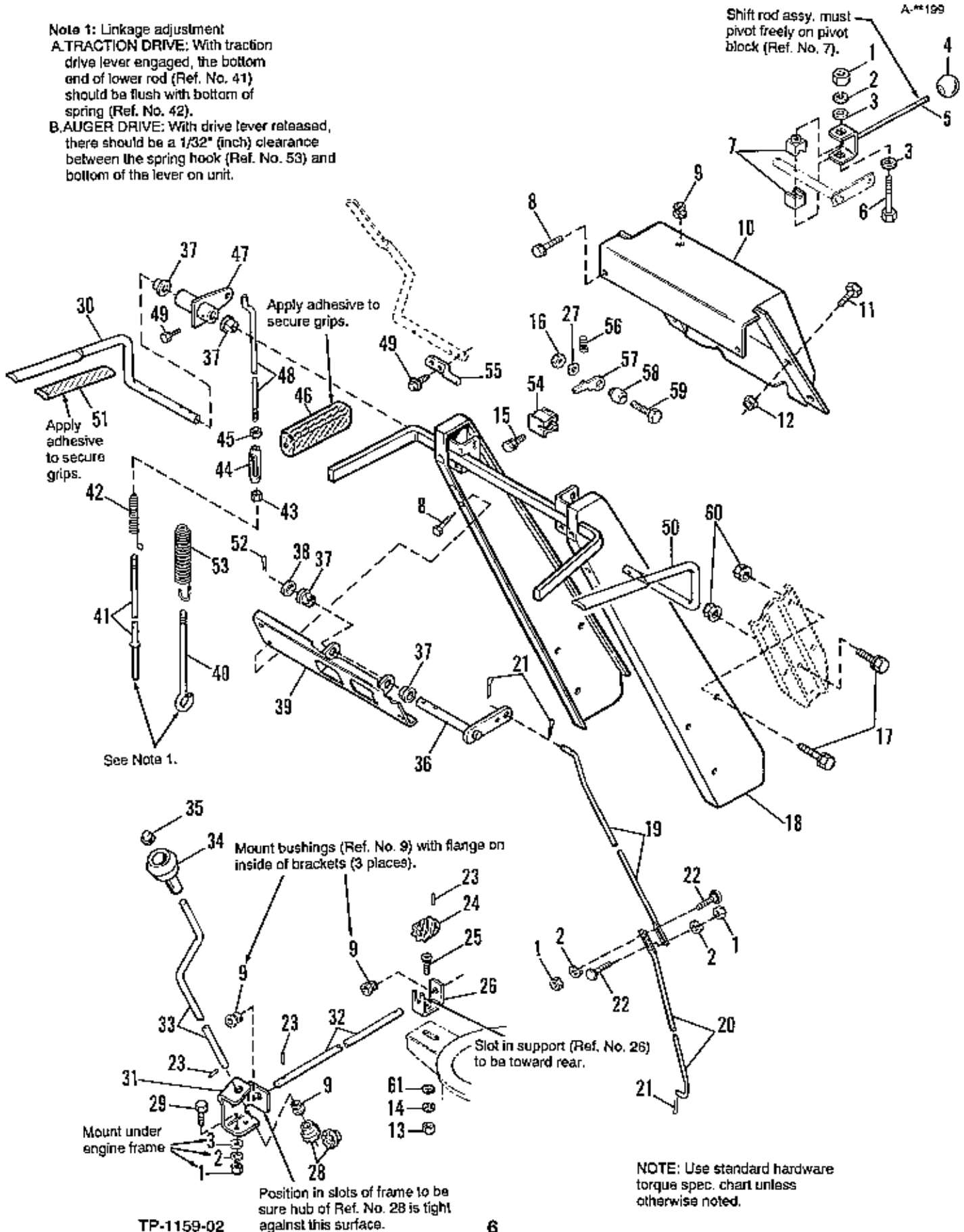


Ref. No.	Part No.	Qty.	Description
1	1916622	5	NUT, Hex, 1/4-20
2	1916964	5	LOCKWASHER, 1/4
3	1921319	4	WASHER, Flat, 9/32
4	8021050	1	KNOB
5	1668523	1	SHIFT ROD ASSY.
6	1921159	1	CAPSCREW, Hex Hd., 1/4-20 x 2-1/4
7	1668524	2	BLOCK, Pivot
8	1925003	6	SCREW, Taplite, 1/4-20 x 1/2
9	1667588	4	BUSHING, Plastic
10	1667800	1	DASH, Handle
11	1935450	4	CAPSCREW, Washer Hd., 1/4-20 x 3/4
12	1920397	4	NUT, Nylon Lock, 1/4-20
13	1917372	7	NUT, Hex, 5/16-18
14	1917356	7	LOCKWASHER, 5/16
15	1928732	1	SCREW, Taplite, #10-24 x 1
16	1923362	1	NUT, Hex Lock, 5/16-18
17	1930591	6	CAPSCREW, Whizlock, 5/16-18 x 3/4
18	1705825	1	HANDLE ASSY.
19	1666256	1	ROD, Shift, Upper
20	1666255	1	ROD, Shift, Lower
21	1918447	3	PIN Cotter
22	1931317	2	BOLT, Carriage, 1/4-20 x 3/4
23	916168	3	PIN, Roll, 1/8 x 3/4
24	1668186	1	WORM, Chute
25	1931333	1	BOLT, Carriage, 5/16-18 x 3/4
26	1611911	1	SUPPORT, Worm
27	1919326	2	WASHER, Flat, 11/32
28	1668188	2	GEAR, Universal
29	1930594	2	CAPSCREW, Hex Hd., 1/4-20 x 3/4
30	1704170	1	HANDLE, Clutch, L.H.
31	1611910	1	SUPPORT, Universal Gear
32	1668187	1	ROD, Chute Worm
33	1668189	1	ROD, Chute Control
34	1668190	1	KNOB, Spinner
35	1960093	1	PALNUT
36	1674567	1	PIVOT ROD ASSY.
37	1668185	5	BUSHING, Plastic
38	1924361	1	WASHER
39	1668050	1	BRACKET, Shift Control
40	1668525	1	ROD, Clutch-Lower, Auger
41	1668526	1	ROD, Clutch-Lower, Traction
42	1668527	1	SPRING
43	1916621	2	NUT, Hex, #10-24, R.H.
44	108775	2	TURNBUCKLE
45	928704	2	NUT, Hex, #10-24, L.H.
46	1671041	2	GRIP, Handle Bar
47	1704255	2	CLUTCH LEVER ASSY.
48	1668121	2	ROD, Clutch-Upper
49	1612432	4	SCREW, Taplite, #10-24 x 1
50	1704172	1	HANDLE, Clutch R.H.
51	1668608	2	GRIP, Clutch
52	1918452	1	PIN, Cotter, 1/8 x 1
53	1669323	1	SPRING, Extension
54	1704697	1	GUIDE, Control
55	1677453	1	ROD, Control
56	1701342	1	SPRING
57	1677454	1	LATCH, Control
58	1678579	1	SPACER, Special
59	1921221	1	CAPSCREW, Hex Hd., 5/16-18 x 1-1/2

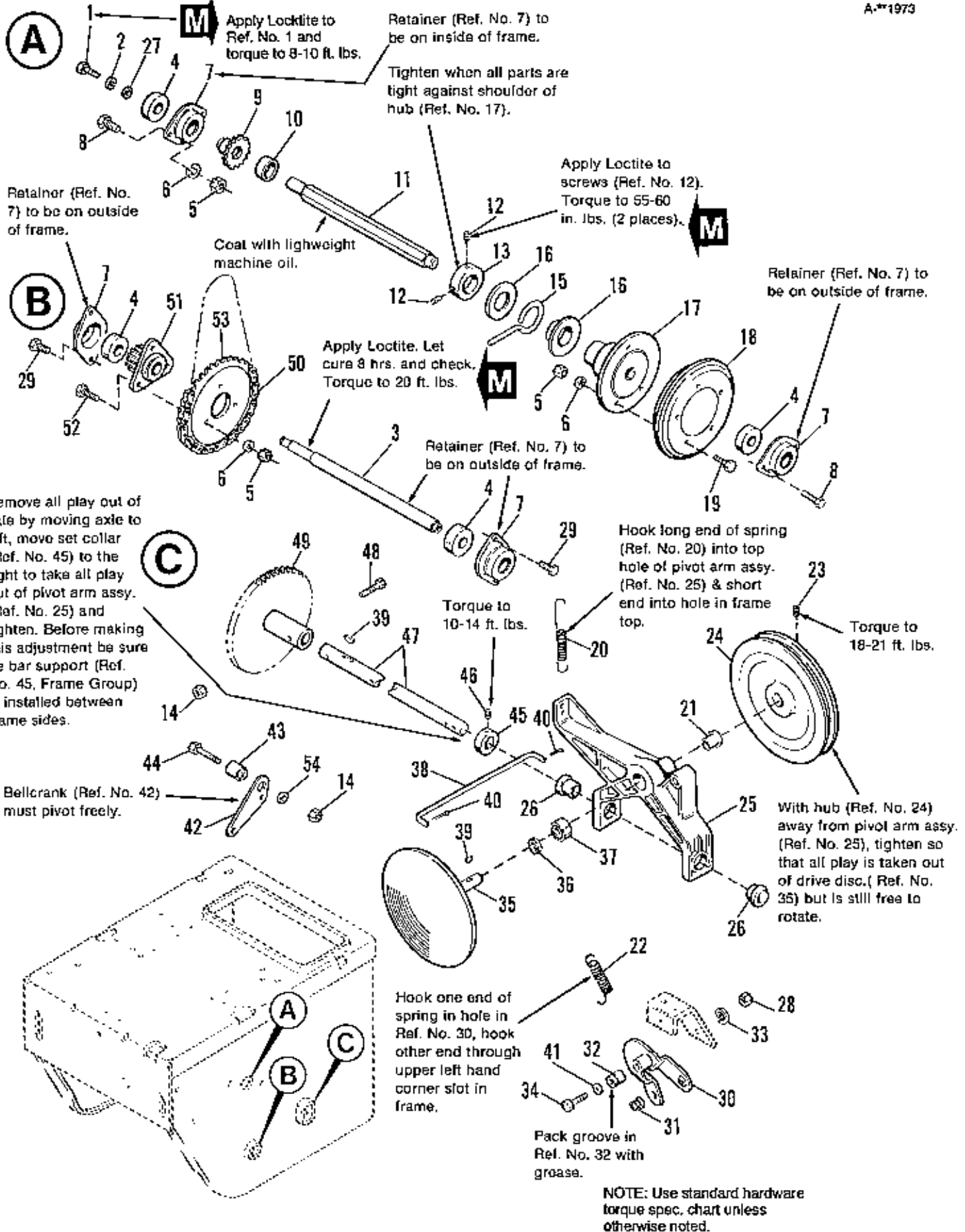
Note 1: Linkage adjustment

A. TRACTION DRIVE: With traction drive lever engaged, the bottom end of lower rod (Ref. No. 41) should be flush with bottom of spring (Ref. No. 42).

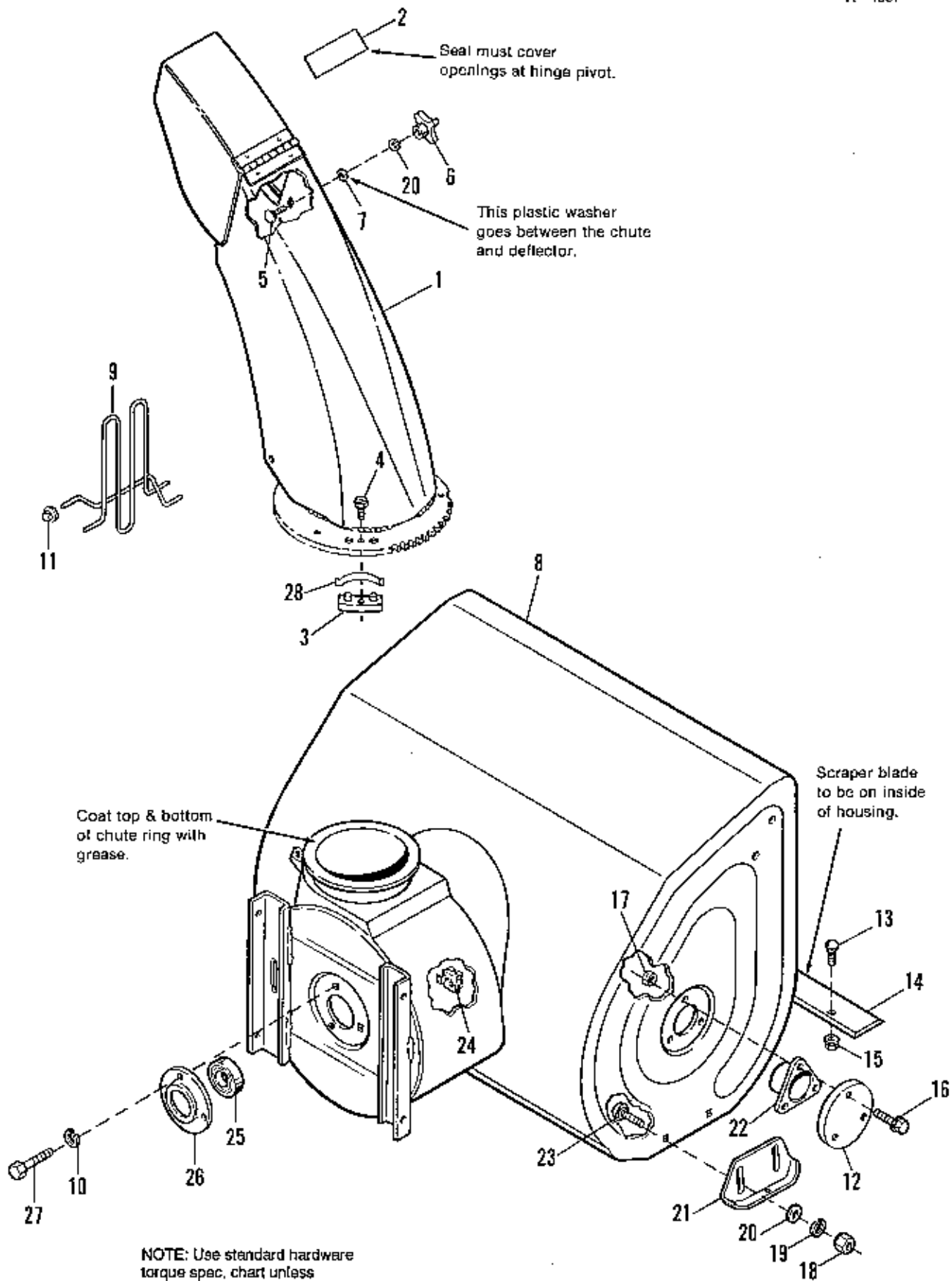
B. AUGER DRIVE: With drive lever released, there should be a 1/32" (inch) clearance between the spring hook (Ref. No. 53) and bottom of the lever on unit.



Ref. No.	Part No.	Qty.	Description
1	1916622	5	NUT, Hex, 1/4-20
2	1916964	5	LOCKWASHER, 1/4
3	1921319	4	WASHER, Flat, 9/32
4	8021050	1	KNOB
5	1668523	1	SHIFT ROD ASSY.
6	1921159	1	CAPSCREW, Hex Hd., 1/4-20 x 2-1/4
7	1668524	2	BLOCK, Pivot
8	1925003	6	SCREW, Taptite, 1/4-20 x 1/2
9	1667588	4	BUSHING, Plastic
10	1667800	1	DASH, Handle
11	1935450	4	CAPSCREW, Washer Hd., 1/4-20 x 3/4
12	1920397	4	NUT, Nylon Lock, 1/4-20
13	1917372	7	NUT, Hex, 5/16-18
14	1917356	7	LOCKWASHER, 5/16
15	1928732	1	SCREW, Taptite, #10-24 x 1
16	1923362	1	NUT, Hex Lock, 5/16-18
17	1930591	6	CAPSCREW, Whizlock, 5/16-18 x 3/4
18	1705825	1	HANDLE ASSY.
19	1666256	1	ROD, Shift, Upper
20	1666255	1	ROD, Shift, Lower
21	1918447	3	PIN Cotter
22	1931317	2	BOLT, Carriage, 1/4-20 x 3/4
23	916168	3	PIN, Roll, 1/8 x 3/4
24	1668186	1	WORM, Chute
25	1931333	1	BOLT, Carriage, 5/16-18 x 3/4
26	1611911	1	SUPPORT, Worm
27	1924940	2	WASHER, Flat, 13/32
28	1668188	2	GEAR, Universal
29	1930594	2	CAPSCREW, Hex Hd., 1/4-20 x 3/4
30	1612167	1	HANDLE, Clutch, L.H.
31	1611910	1	SUPPORT, Universal Gear
32	1668187	1	ROD, Chute Worm
33	1668189	1	ROD, Chute Control
34	1668190	1	KNOB, Spinner
35	1960093	1	PALNUT
36	1674567	1	PIVOT ROD ASSY.
37	1668185	5	BUSHING, Plastic
38	1924361	1	WASHER
39	1668050	1	BRACKET, Shift Control
40	1668525	1	ROD, Clutch-Lower, Auger
41	1668526	1	ROD, Clutch-Lower, Traction
42	1707452	1	SPRING
43	1916621	2	NUT, Hex, #10-24, R.H.
44	108775	2	TURNBUCKLE
45	928704	2	NUT, Hex, #10-24, L.H.
46	1671041	2	GRIP, Handle Bar
47	1704255	2	CLUTCH LEVER ASSY.
48	1668121	2	ROD, Clutch-Upper
49	1612432	4	SCREW, Taptite, #10-24 x 1
50	1612165	1	HANDLE, Clutch R.H.
51	1668608	2	GRIP, Clutch
52	1918452	1	PIN, Cotter, 1/8 x 1
53	1669323	1	SPRING, Extension
54	1705899	1	GUIDE, Control
55	1677453	1	ROD, Control
56	1701342	1	SPRING
57	1715898	1	LATCH, Control
58	1678579	1	SPACER, Special
59	1921221	1	CAPSCREW, Hex Hd., 5/16-18 x 1-1/2
60	1931277	6	NUT, Hex, Flange Whizlock, 5/8-18
61	1919326	1	WASHER, Plain 11/32



Ref. No.	Part No.	Qty.	Description
1	1921959	1	CAPSCREW, Hex Hd., 1/4-20 x 5/8
2	1916964	1	LOCKWASHER, 1/4
3	1612160	1	JACKSHAFT
4	1705897	4	BEARING
5	1917372	10	NUT, Hex, 5/16-18
6	1917356	10	LOCKWASHER, 5/16
7	1667341	4	RETAINER, Bearing
8	1925205	4	CAPSCREW, Hex Hd., 5/16-18 x 5/8
9	1667331	1	SPROCKET, 10 Tooth
10	1667501	1	SPACER
11	1667340	1	SHAFT, Hex
12	1960348	2	SETSCREW, Socket Hd., 1/4-20 x 3/8
13	1667335	1	SET COLLAR
14	1919438	2	NUT, Hex, Lock, 5/16-18
15	1666207	1	PIN, Slide
16	1678956	2	COLLAR, Thrust
17	1665995	1	HUB, Friction Disc
18	1665975	1	DISC, Friction
19	1921332	3	CAPSCREW, Hex Hd., 5/16-18 x 3/4
20	157207	1	SPRING (1691777, 1691778)
	1707002	1	SPRING (1691900, 1691946)
21	1666855	1	BUSHING
22	1668255	1	SPRING
23	1928721	1	SETSCREW, Sq. Hd., 5/16-18 x 1/2
24	1672595	1	PULLEY, Traction
25	1670849	1	ARM ASSY., Pivot w/Bushings (Incl. Ref. Nos. 21, 26 & 37)
26	1666425	2	BUSHING
27	1960353	1	WASHER, Flat, 1/4
28	916950	1	NUT, Hex, 3/8-16
29	1924856	4	TAPTITE, 5/16-18 x 1/2
30	1669256	1	ARM ASSY., Shift w/Bushings (Includes Ref. No. 31)
31	1669255	1	BUSHING, Ball
32	1666114	1	BUSHING, Spacer
33	916965	1	LOCKWASHER, 3/8
34	1923701	1	CAPSCREW, Hex Hd., 3/8-16 x 2
35	1666230	1	DISC, Drive
36	1666379	1	WASHER
37	1665521	1	BEARING
38	1666105	1	ROD, Pivot
39	918312	2	KEY, Woodruff, 3/16 x 5/8
40	1918451	2	PIN, Cotter, 1/8 x 3/4
41	1924940	1	WASHER, Flat, 13/32
42	1700473	1	BELLCRANK
43	1666106	1	BUSHING, Pivot
44	1922127	1	CAPSCREW, Hex Hd., 5/16-18 x 1-3/4
45	8021010	1	SET COLLAR
46	1928721	1	SETSCREW, Sq. Hd., 5/16-18 x 1/2
47	1612084	1	AXLE
48	1930570	1	CAPSCREW, Hex Hd., 5/16-18 x 1-1/2
49	1612086	1	GEAR ASSY.
50	1666980	1	CHAIN, Drive
51	1667326	1	GEAR AND BEARING ASSY., 10 Tooth (1691777, 1691778)
	1672775	1	GEAR AND BEARING ASSY., 10 Tooth (1691990, 1691946)
52	1921333	3	CAPSCREW, Hex Hd., 5/16-18 x 1
53	1667330	1	SPROCKET, 36 Tooth
54	1919326	1	WASHER, Flat, 11/32

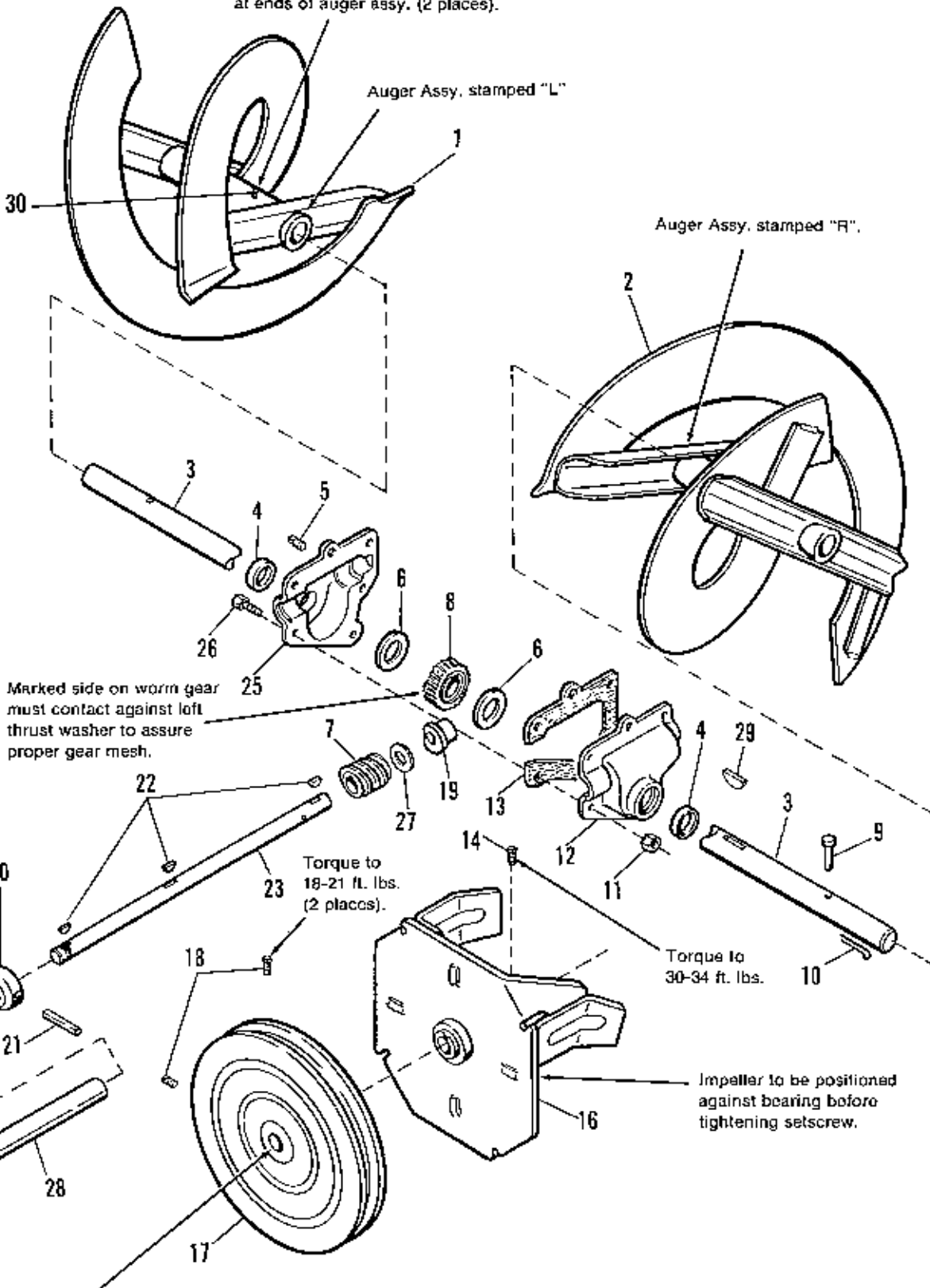


Ref. No.	Part No.	Qty.	Description
1	1704161	1	DEFLECTOR ASSY.
2	1706085	2	SEAL, Chute
3	1666613	3	HOLDDOWN, Chute
4	1960001	3	SCREW, Hex, Washer Hd., 10-14 x 5/8
5	1931333	2	BOLT, Carriage, 5/16-18 x 3/4
6	1670578	1	KNOB, 4 Arm w/5/16-18 Thd. Insert
7	960210	1	WASHER, Nylon
8	1612184	1	HOUSING ASSY., (24")
9	1612455	1	GUARD, Chute
10	1917356	3	LOCKWASHER, 5/16
11	1960126	2	PUSH NUT, 1/4
12	1668639	2	CAP, Bearing
13	1931332	5	BOLT, Carriage, 5/16-18 x 5/8
14	1612174	1	BLADE, Scraper, (24")
15	1935048	5	LOCKNUT, Flange, 5/16-18
16	1923325	6	CAPSCREW, Hex Flange Whizlock, 5/16-18 x 7/8
17	1923362	6	NUT, Hex, Center Lock, 5/16-18
18	1916950	4	NUT, Hex, 3/8-16
19	1916965	4	LOCKWASHER, 3/8
20	1924940	5	WASHER, Flat, 13/32
21	177434	2	SKID
22	1665980	2	BEARING, Auger
23	1931348	4	BOLT, Carriage, 3/8-16 x 3/4
24	930659	3	NUT, Retainer, 5/16-18
25	108202	1	BEARING, Ball
26	1665982	1	RETAINER, Bearing
27	1925205	3	CAPSCREW, Hex Hd., 5/16-18 x 5/8
28	1667865	3	SPRING

Apply grease until it appears at ends of auger Assy. (2 places).

Auger Assy. stamped "L"

Auger Assy. stamped "R"



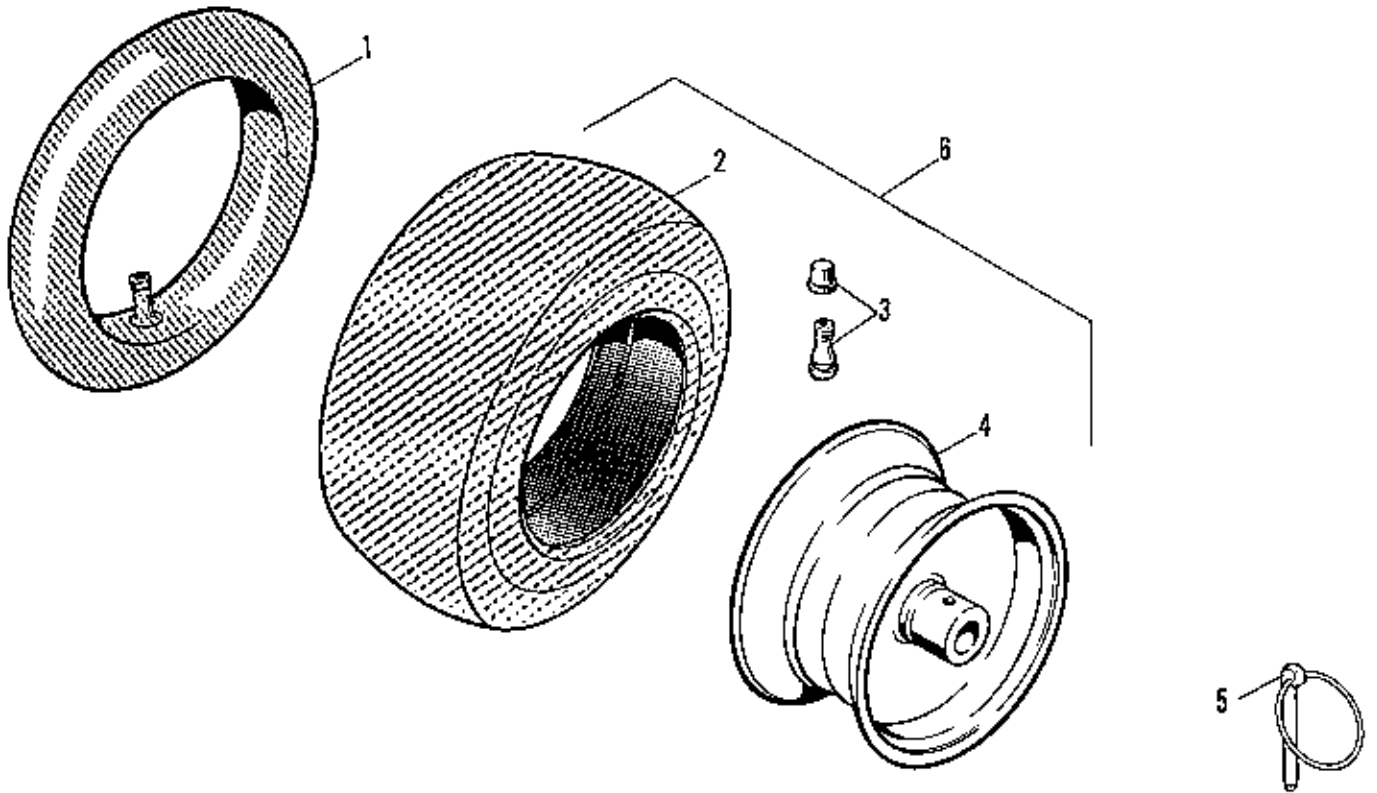
NOTE: Use standard hardware torque spec. chart unless otherwise noted.

Ref. No.	Part No.	Qty.	Description
1	1612130	1	AUGER ASSY., L.H., (24")
2	1612131	1	AUGER ASSY., R.H., (24")
3	1612117	1	SHAFT, Auger
4	118118	2	SEAL
5	1668971	1	PLUG, Pipe, Tapered, 1/8
6	118315	2	WASHER, Thrust
7	1612142	1	GEAR, Rolled Worm
8	1612141	1	GEAR, Worm
9	1668344	2	PIN, Shear
10	1918447	2	PIN, Cotter, 3/32 x 3/4
11	1923358	6	LOCKNUT, Hex, 1/4-20
12	1612137	1	CASE, Gear, R.H.
13	1612124	1	GASKET
14	1706400	1	SETSCREW, Sq. Hd., 3/8-16 x 1/2
15	1612093	1	SEAL, Oil
16	1612187	1	IMPELLER ASSY.
17	1679293	1	PULLEY, Auger Input
18	1928721	2	SETSCREW, Sq. Hd., 5/16-18 x 1/2
19	1612149	2	BUSHING, Flange
20	1612127	1	COLLAR, Thrust
21	936098	1	PIN, "Drive Lok" Type A, 3/16 x 1-1/2
22	918312	3	KEY, Woodruff, 3/16 x 5/8
23	1612129	1	SHAFT, Worm
24	1960114	1	WASHER
25	1612136	1	CASE, Gear, L.H.
26	1960346	6	CAPSCREW, Hex Hd., 1/4-20 x 7/8
27	168111	1	WASHER, Thrust
28	1612111	1	TUBE, Worm Shaft
29	930246	1	KEY, Woodruff, 1/4 x 3/4
30	921133	1	GREASE FITTING

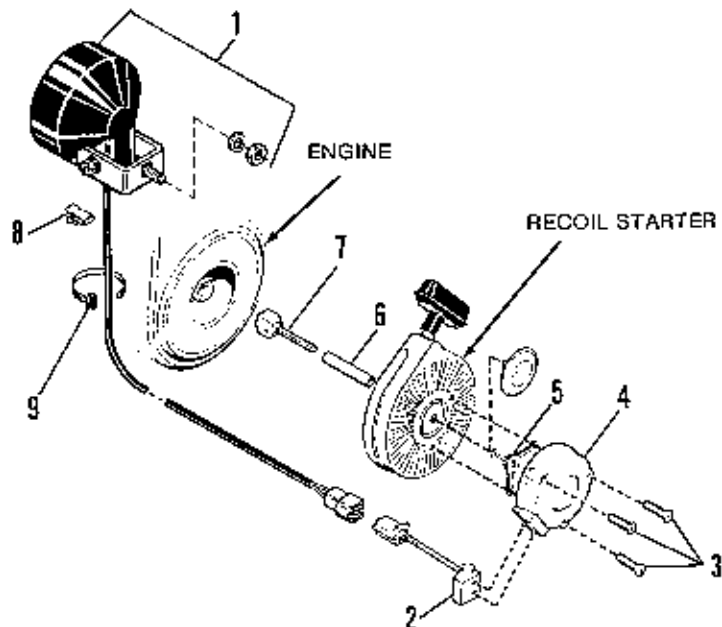
NOTE: Use only Simplicity Cold Weather Special Worm Gear Oil in Worm Gear Housing.

1 - 8 Oz. Bottle, Part #1704836

Case of 12 - 8 Oz. Bottles, Part #1685406



Optional Headlight Kit for Tecumseh Engines



NOTE: Use standard hardware torque spec. chart unless otherwise noted.

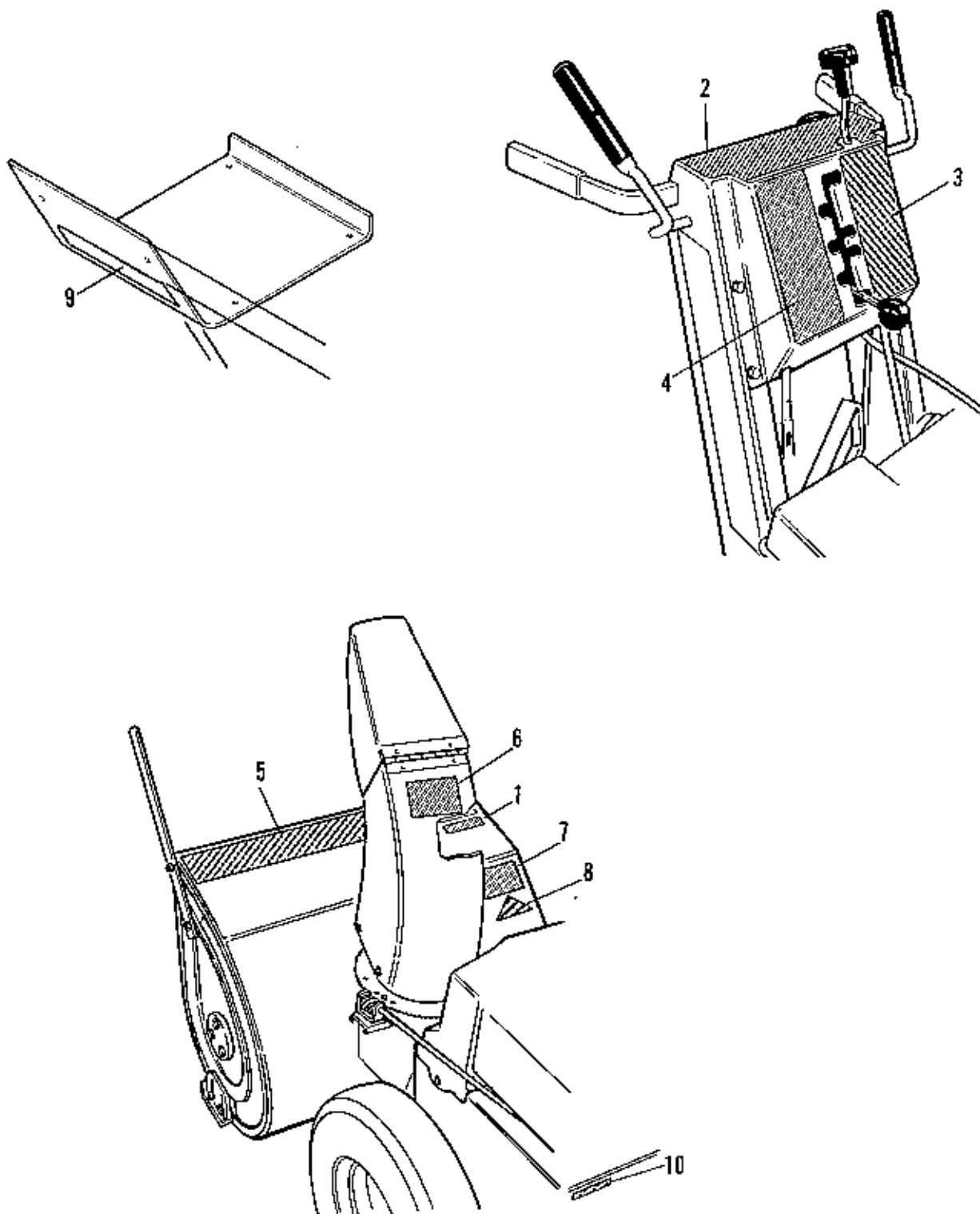
Ref. No.	Part No.	Qty.	Description
1	153038		TUBE
2	1612000	2	TIRE, (Snow Hog)
3	172353	2	VALVE STEM & CAP
4	1677057	2	WHEEL ASSY.
5	1666969	2	PIN, Klik
6	1611997	2	WHEEL & TIRE ASSY. (Incl. Ref. Nos. 1, 3 & 4)

Mfg. No. 1691827, 1685459

Optional Headlight Kit for Tecumseh Engines

Ref. No.	Part No.	Qty.	Description
1	1704644	1	LIGHT, Add-On
2	1704647	1	CONNECTOR, A-C Lighting
3	* 1704652	3	SCREW, Self-Tapping, 1-1/4"
	1704653	3	SCREW, Self-Tapping, 1-1/8"
4	1704646	1	ALTERNATOR
5	* 1704648	1	SPACER
6	1704649	1	TUBE, Centering
7	* 1704642	1	SHAFT, Alternator, 3-1/2"
	1704641	1	SHAFT, Alternator, 3"
8	930222	1	CLIP
9	925094	1	TIE, Wire

*Not used on 8 HP model.



Ref. No.	Part No.	Qty.	Description
1	1704259	1	DECAL, Housing, 860S (1691778)
	1704263	1	DECAL, Housing, 860SE (1691777)
2	1701591	1	DECAL, Dash (1691777, 1691778)
	1705905	1	DECAL, Dash (1691900, 1691946)
3	1704232	1	DECAL, Shift Pattern, L.H.
4	1704231	1	DECAL, Shift Pattern, R.H.
5	1704264	1	DECAL, Auger, Simplicity Logo
	1708781	1	DECAL, Auger, Sno-Away 860
6	1677488	1	DECAL, Danger, Blower
7	1677485	1	DECAL, Danger, Auger
8		1	DECAL, OPEI (Not Serviced)
9	1709061	1	DECAL, Touch Up Paint
10		1	I.D. PLATE (Not Serviced)

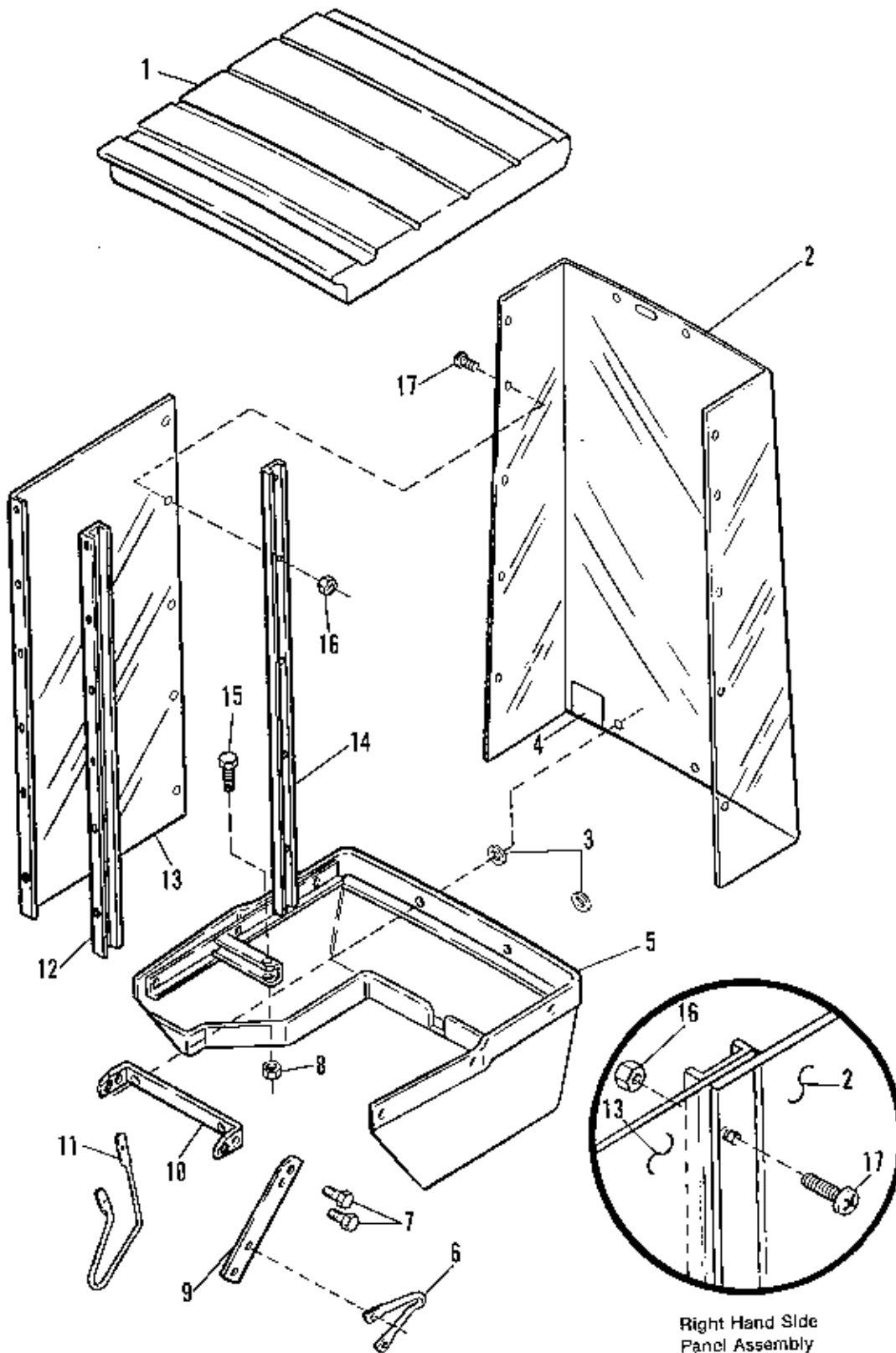
SAFETY DECALS



Ref. No. 6

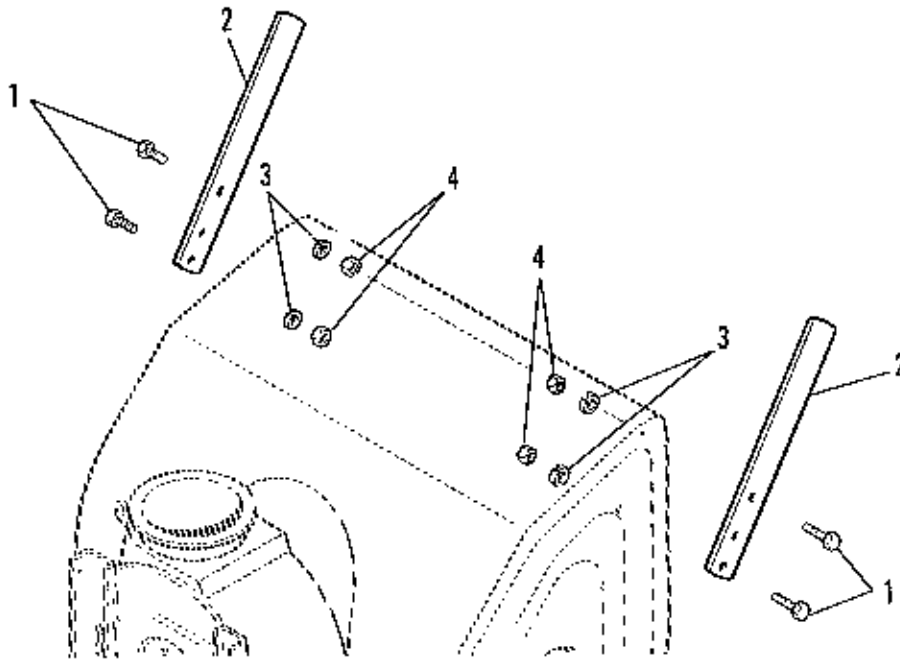


Ref. No. 7



NOTE: Use standard hardware torque spec. chart unless otherwise noted.




Ref. No.	Part No.	Qty.	Description
1	1668887	1	COVER, Top
2	1668886	1	PANEL, Front
3	1921319	3	WASHER, Flat, 9/32
4	1689127	1	DECAL, Cleaning Instructions
5	1668869	1	SHROUD, Lower
6	1669090	1	GUIDE, Rope
7	1923341	4	CAPSCREW, Hex Hd., 1/4-20 x 3/4
8	1924433	2	LOCKNUT, Nylon, 5/16-18
9	1668851	2	SUPPORT, Side
10	1668852	1	SUPPORT, Front
11	1669150	2	ROD, Skid
12	1611730	2	CHANNEL, Side
13	1668884	2	PANEL, Side
14	1611731	1	SUPPORT ASSY., L.H.
	1611732	1	SUPPORT ASSY., R. H. (not shown)
15	1922127	2	CAPSCREW, Hex Hd., 5/16-18 x 1-3/4
16	1920397	37	LOCKNUT, Nylon, 1/4-20
17	1935945	33	SCREW, Phil. Truss Hd., 1/4-20 x 3/4



Ref. No.	Part No.	Qty.	Description
1	1921332	4	CAPSCREW, Hex Hd., 5/16-18 x 3/4
2	1688171	2	CUTTER, Drift
3	1917356	4	LOCKWASHER, 5/16
4	1917372	4	NUT, Hex, 5/16-18

NOTE: Use standard hardware torque spec. chart unless otherwise noted.

**TORQUE SPECIFICATIONS FOR
STANDARD MACHINE HARDWARE
TOLERANCE $\pm 20\%$**

SIZE	SAE GRADE #2 		SAE GRADE #5 		SAE GRADE #8 	
	<u>In./Lbs.</u> Ft./Lbs.	Nm.	<u>In./Lbs.</u> Ft./Lbs.	Nm.	<u>In./Lbs.</u> Ft./Lbs.	Nm.
8-32	19	2.1	30	3.4	41	4.6
8-36	20	2.3	31	3.5	43	4.9
10-24	27	3.1	43	4.9	60	6.8
10-32	31	3.5	49	5.5	68	7.7
1/4-20	66	7.6	8	10.9	12	16.3
1/4-28	76	8.6	10	13.6	14	19.
5/16-18	11	15.	17	23.1	25	34.
5/16-24	12	16.3	19	25.8	25	34.
3/8-16	20	27.2	30	40.8	45	61.2
3/8-24	23	31.3	35	47.6	50	68.
7/16-14	30	40.8	50	68.	70	95.2
7/16-20	35	47.6	55	74.8	80	108.8
1/2-13	50	68.	75	102.	110	149.6
1/2-20	55	74.8	90	122.4	120	163.2
9/16-12	65	88.4	110	149.6	150	204.
9/16-18	75	102.	120	163.2	170	231.2
5/8-11	90	122.4	150	204.	220	299.2
5/8-18	100	136.	180	244.8	240	326.4
3/4-10	160	217.6	260	353.6	386	525.
3/4-16	180	244.8	300	408.	420	571.2
7/8-9	140	190.4	400	544.	600	816.
7/8-14	155	210.8	440	598.4	660	897.6
1-8	220	299.2	580	788.8	900	1,224.
1-12	240	326.4	640	870.4	1,000	1,360.

NOTE:

- These torque values are to be used for all hardware excluding: locknuts, self-tapping screws, thread forming screws, sheet metal screws and socket head setscrews.
- Recommended seating torque values for locknuts:
 - For prevailing torque locknuts - use 65% of grade 5 torques.
 - For flange whizlock nuts (and screws) - use 135% of grade 5 torques.
- Unless otherwise noted on assembly drawings all torque values must meet this specification.

**BOLT HEAD MARKING
S.A.E. GRADE:**



SIMPLICITY MANUFACTURING, INC.
500 N. Spring St., P.O. Box 997
Port Washington, WI USA 53074-0997

TP-1159-02
PRINTED IN U.S.A.
©1993 2/93