



Parts Manual



Turf & Trail Cruiser

Series Utility Vehicle

16HP Product

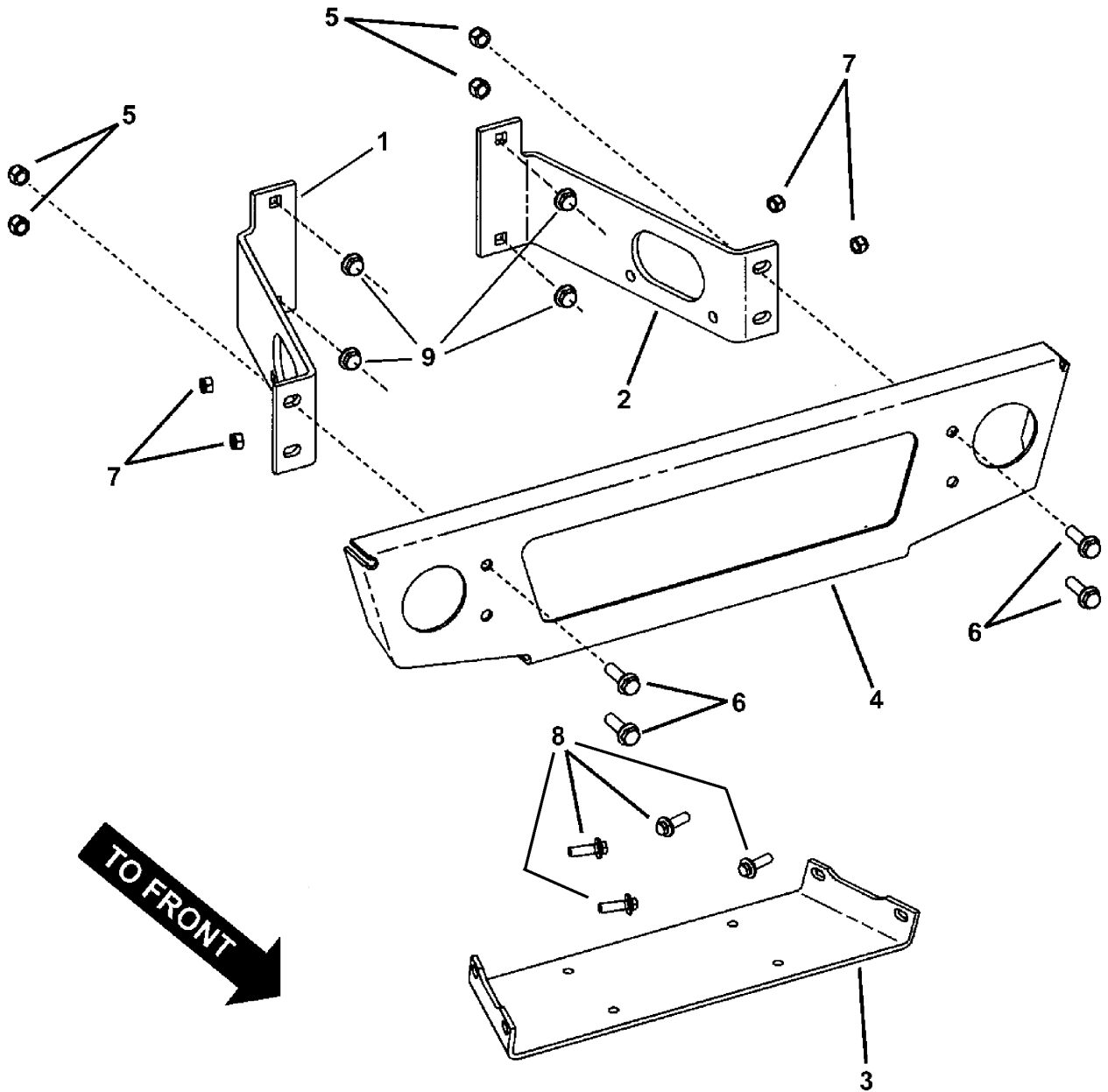
Mfg. No.	Description
85632	UVG1621BV, Turf Cruiser 16HP B&S 2WD w/Generator
85668	UV1621BV, Turf Cruiser 16HP B&S 2WD
85903	UVGT1621BV, Trail Cruiser 16HP B&S 2WD w/Generator ATV Tires

PRODUCT COMPONENTS	PAGES
Bumper Group	4
Hood Group	6
Front Clip Group	8
Front Suspension Group	12
Front Frame Group	14
Rear Frame Group - LH	16
Rear Frame Group - RH	18
Steering Group	20
Seat Pedestal Group - Controls	22
Seat Pedestal Group - Frame	24
Seat Group	26
Differential Lock Group	28
Brake Assembly	30
Drive Base Group	32
CVT Axle Group	36
Bed Assembly - Latch	38
Bed Assembly - Tail Gate	40
Decal Group	42
R.O.P.S. Group	44
Toolbox Group	46
Wheel & Tire Group - Turf Tires	48
Electrical Group	50
Wiring Harness	52
Wiring Schematic	54
Torque Specification Chart	Inside Back Cover

Bumper Group

179bump

NOTE: Unless noted otherwise,
use the standard hardware torque
specification chart.



The above parts group applies to the following Mfg. Nos.:

85632 - UVG1621BV

85668 - UV1621BV

85903 - UVGT1621BV

Bumper Group

REF NO	PART NO.	QTY.	DESCRIPTION
1	7028009	1	SUPPORT, Bumper LH
2	7028022	1	SUPPORT, Bumper RH
3	7028029	1	PLATE, Winch
4	7028072	1	BUMPER
5	7091299	4	NUT, Hex Nyloc, 3/8-16
6	7090659	4	BOLT, Hex Flange Lock, 3/8-16 x 1-1/4
7	7091298	4	NUT, Hex Nyloc, 5/16-18
8	7091681	4	BOLT, Hex Flange Lock, 5/16-18 x 1
9	7091619	4	NUT, Hex Flange Lock, 3/8-16

Footnotes

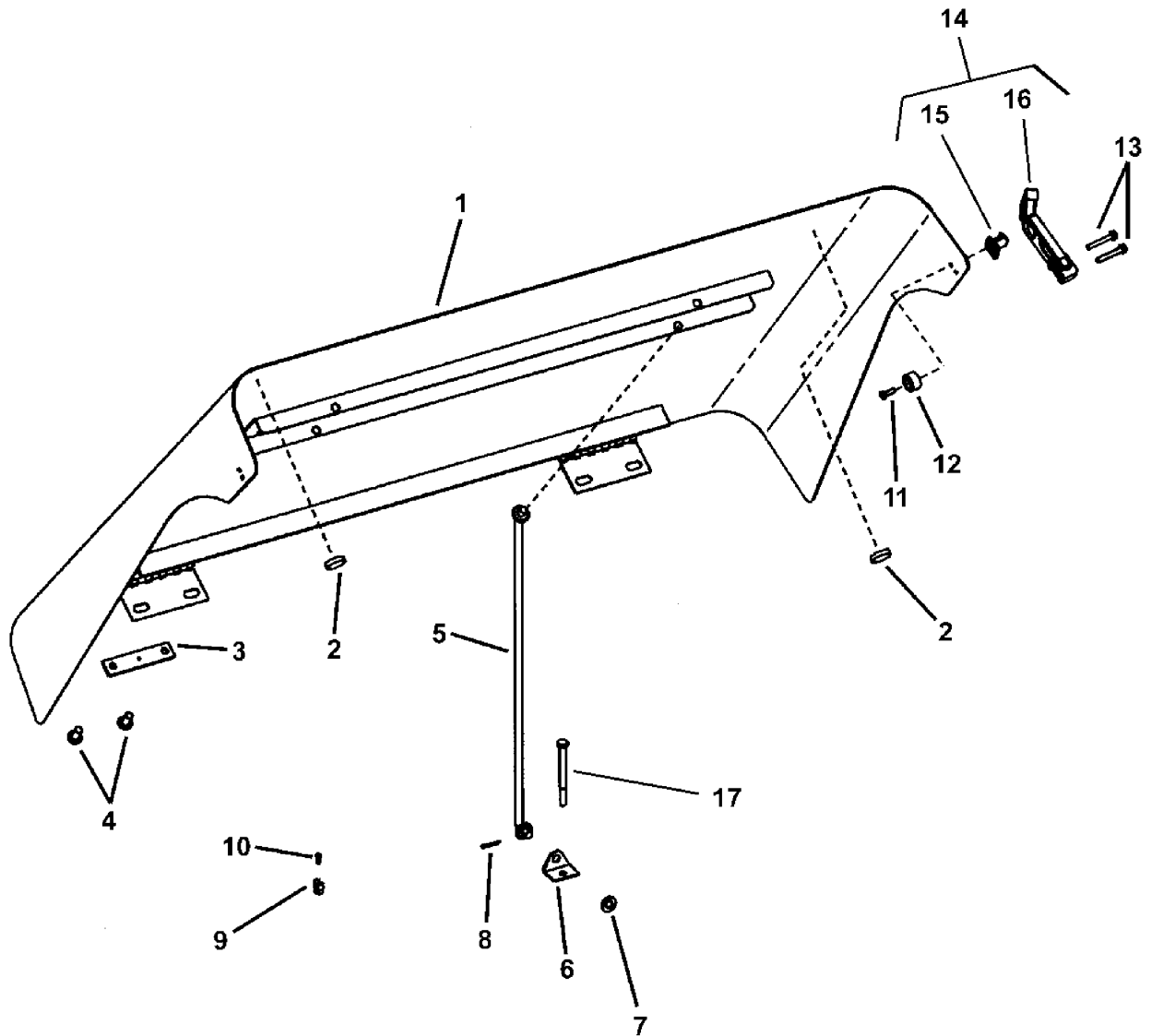
The above parts group applies to the following Mfg. Nos.:

85632 - UVG1621BV
85668 - UV1621BV
85903 - UVGT1621BV

Hood Group

NOTE: Unless noted otherwise,
use the standard hardware torque
specification chart.

179hood



The above parts group applies to the following Mfg. Nos.:

85632 - UVG1621BV

85668 - UV1621BV

85903 - UVGT1621BV

Hood Group

REF NO	PART NO.	QTY.	DESCRIPTION
1	7027495	1	HOOD, Utility Vehicle
2	7035270	5	PAD, Hood
3	7043211	1	PLATE WASHER
4	7091833	4	SCREW, Cross Recessed Pan Head, 5/16-18 x 5/8
5	7043208	1	PROP, Hood
6	7043209	1	BRACKET, Hood Prop
7	7090188	1	WASHER, .34 x .69 x .08 Flat
8	7091597	1	COTTER PIN, 3/32 x 3/4
9	7043210	1	HOLDER, Hood Prop
10	7092074	1	SCREW, Pan Head Self-Tap, #6-20 x .34
11	7091942	2	SCREW, Pan Head Machine, #10-24 x 1/2
12	7033795	2	BUMPER, Recess Style
13	7091216	4	SCREW, Hex Washer Self-Tap, #10 x 1-1/4, HI-LO
14	7029051	2	ASSEMBLY, Hood Latch (Includes Ref. Nos. 15 & 16)
15	7028017	1	KEEPER, Hood Handle
16	7028035	1	ASSEMBLY, Hood Handle
17	7091317	1	CAPSSCREW, Hex Head 1/4-20 x 3 GR5

Footnotes

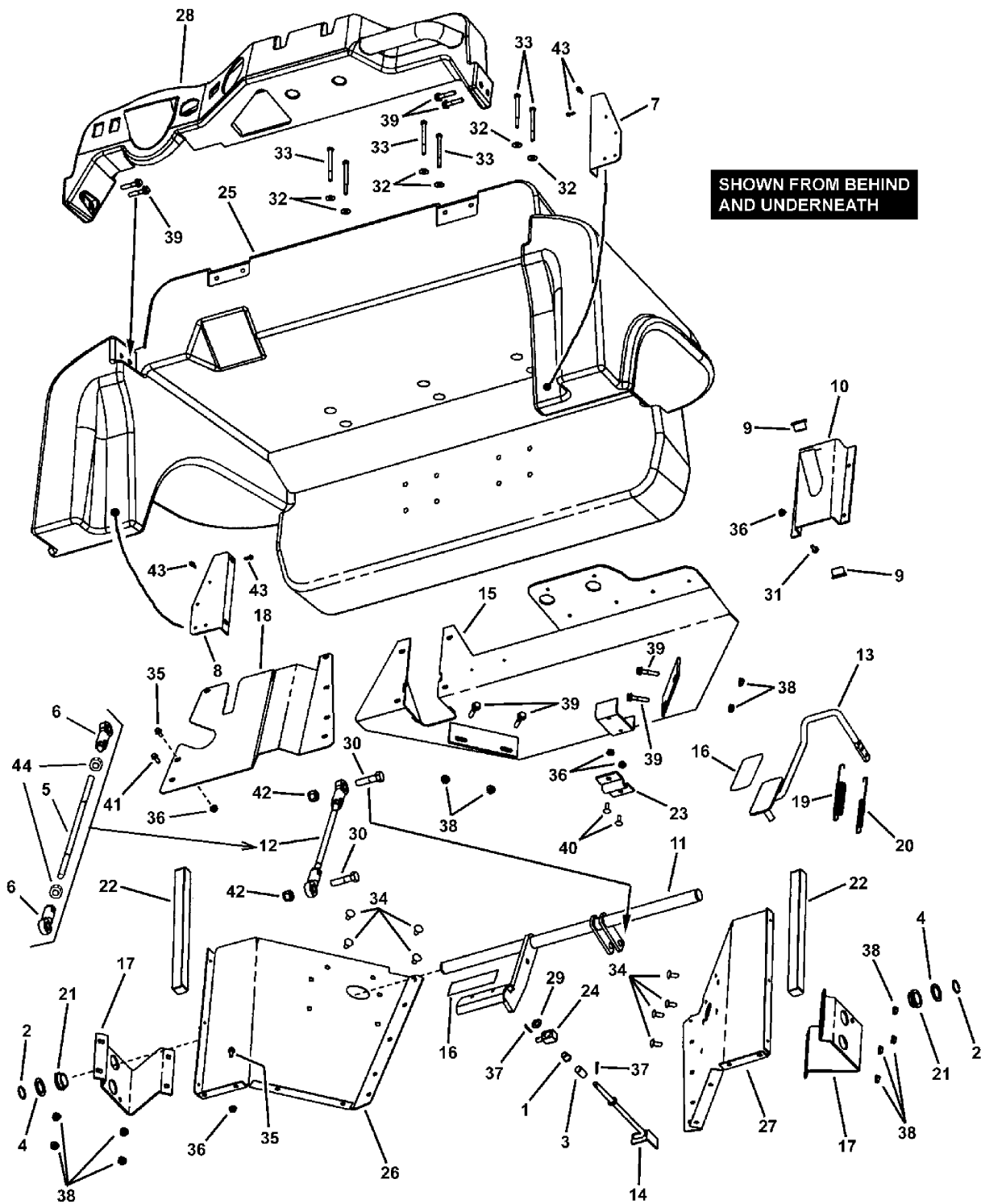
The above parts group applies to the following Mfg. Nos.:

85632 - UVG1621BV
85668 - UV1621BV
85903 - UVGT1621BV

Front Clip Group

NOTE: Unless noted otherwise,
use the standard hardware torque
specification chart.

179frcg



The above parts group applies to the following Mfg. Nos.:

85668 - UV1621BV

85632 - UVG1621BV

85903 - UVGT1621BV

Front Clip Group

REF NO	PART NO.	QTY.	DESCRIPTION
1	7012306	1	BUSHING, Flange .381 x .625 x .62
2	7012709	2	RING, 1.00 Dia. External Retaining
3	7014432	1	SPRING
4	7016561	2	BUSHING, 14 Gage Machine
5	7072988	1	ROD, Upper CVT Brake
6	7073012	2	ROD END, Female 1/2-20 thread
7	7034648	1	KICK PLATE, RH
8	7034741	1	KICK PLATE, LH
9	7035496	2	BEARING, .750 I.D.
10	7041967	1	SUPPORT ASSEMBLY, Column
11	7058125	1	PEDAL ASSEMBLY, Brake CVT
12	7058556	1	ASSEMBLY, Upper Brake Rod (Includes Ref. Nos. 5, 6 & 44)
13	7058748	1	PEDAL ASSEMBLY, Throttle Pedal
14	7058753	1	ROD ASSEMBLY, Brake Switch
15	7063343	1	SUPPORT ASSEMBLY, Steering
16	7072502	2	PEDAL GRIP
17	7072518	2	BRACKET, Brake Support, Used on Turf Cruiser Models 85632 & 85668
17	7035752	2	BRACKET, Brake Support, Used on Trail Cruiser Model 85903
18	7072588	1	PEDAL SHIELD, Used on Turf Cruiser Models 85632 & 85668
18	7035753	1	PEDAL SHIELD, Used on Trail Cruiser Model 85903
19	7072600	1	SPRING, Throttle Pedal Return
20	7072602	1	SPRING, Inner Throttle Return
21	7072645	2	BEARING, 1 I.D.
22	7078031	2	GASKET, Closed Cell, Adhesive Back
23	7073163	1	PIVOT BRACKET, Throttle
24	7073876	1	SWIVEL, Brake Rod
25	7075818	1	FENDER, UV-2
26	7075870	1	FIREWALL, LH, Used on Turf Cruiser Models 85632 & 85668
26	7035754	1	FIREWALL, LH, Used on Trail Cruiser Model 85903
27	7075871	1	FIREWALL, RH, Used on Turf Cruiser Models 85632 & 85668
27	7035755	1	FIREWALL, RH, Used on Trail Cruiser Model 85903
28	7078813	1	DASH, UV-2
29	7090122	1	WASHER, 3/8 SAE Flat
30	7090543	2	CAPSCREW, Hex Head, 1/2-13 x 2-3/4 GR 5
31	7091148	4	SCREW, Pan Head Machine 1/4-20 x 1/2
32	7091253	6	WASHER, .281 x .750 x .051 Flat
33	7091317	6	CAPSCREW, Hex Head, G1/4-20 x 3 Hex Head, GR 5
34	7091508	8	CARRIAGE BOLT, 5/16-18 x 3/4 GR 5
35	7091579	13	SCREW, Hex Flange Lock, 1/4-20 x 1/2 GR 5
36	7091584	23	NUT, Hex Flange Lock, 1/4-20 GR 5
37	7091598	2	COTTER PIN, 1/8 x 3/4
38	7091601	12	NUT, Hex Flange Lock, 5/16-18 GR 5

Footnotes

The above parts group applies to the following Mfg. Nos.:

85668 - UV1621BV

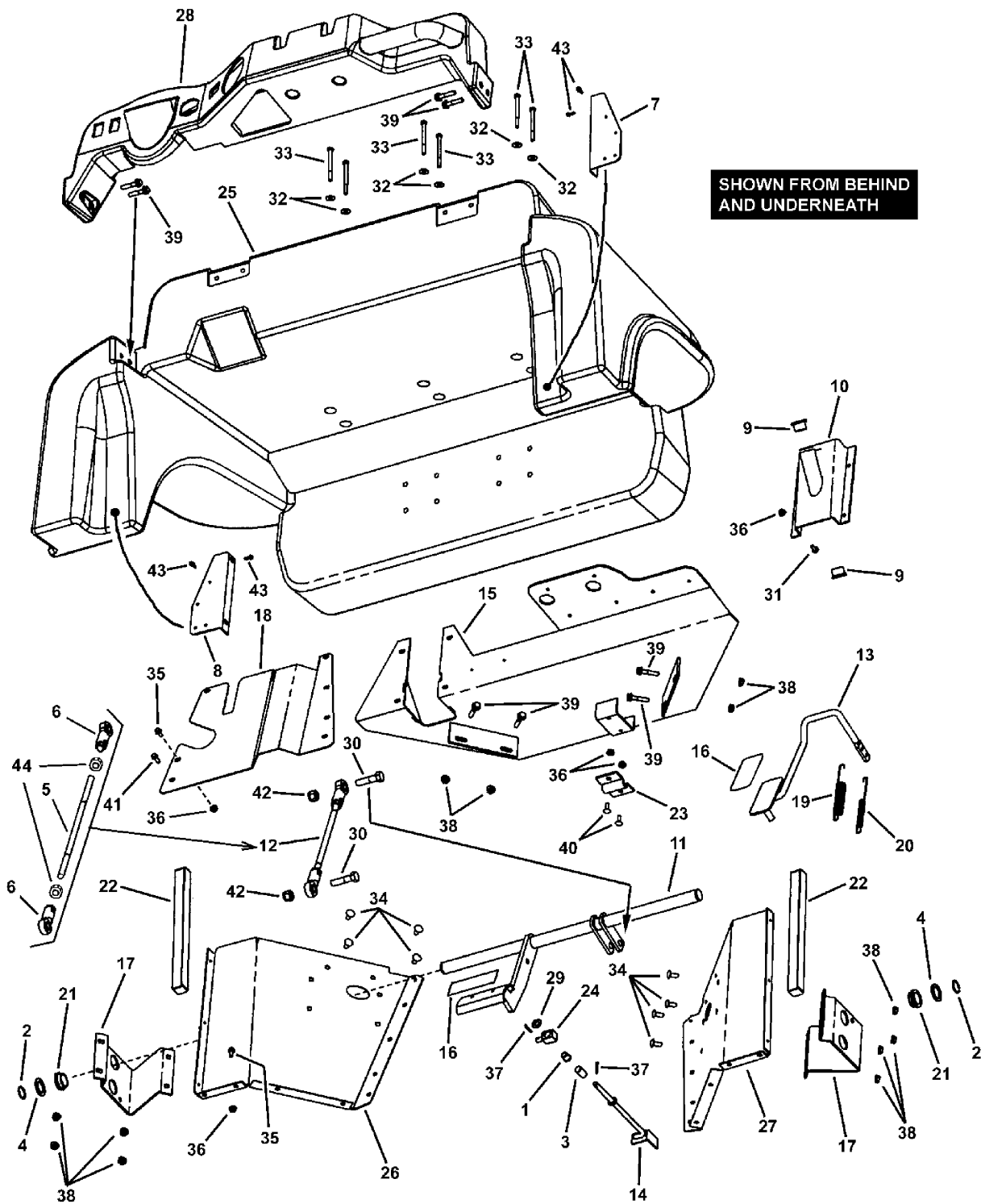
85632 - UVG1621BV

85903 - UVGT1621BV

Front Clip Group

NOTE: Unless noted otherwise,
use the standard hardware torque
specification chart.

179frcg



The above parts group applies to the following Mfg. Nos.:

85668 - UV1621BV

85632 - UVG1621BV

85903 - UVGT1621BV

Front Clip Group

REF NO	PART NO.	QTY.	DESCRIPTION
39	7091602	4	BOLT, Hex Flange Lock, 5/16-18 x 1-1/2 GR 5
40	7091776	2	CARRIAGE BOLT, 1/4-20 x 3/4
41	7091819	2	SCREW, Hex Washer Self-Tap, 1/4-20 x 5/8
42	7091922	2	NUT, Hex Nyloc, 1/2-13
43	7092106	6	SCREW, #10 x 5/8, HiLo Nail Point
44	7090559	2	NUT, Hex Jam, 1/2-20 GR 5 or B

Footnotes

The above parts group applies to the following Mfg. Nos.:

85668 - UV1621BV

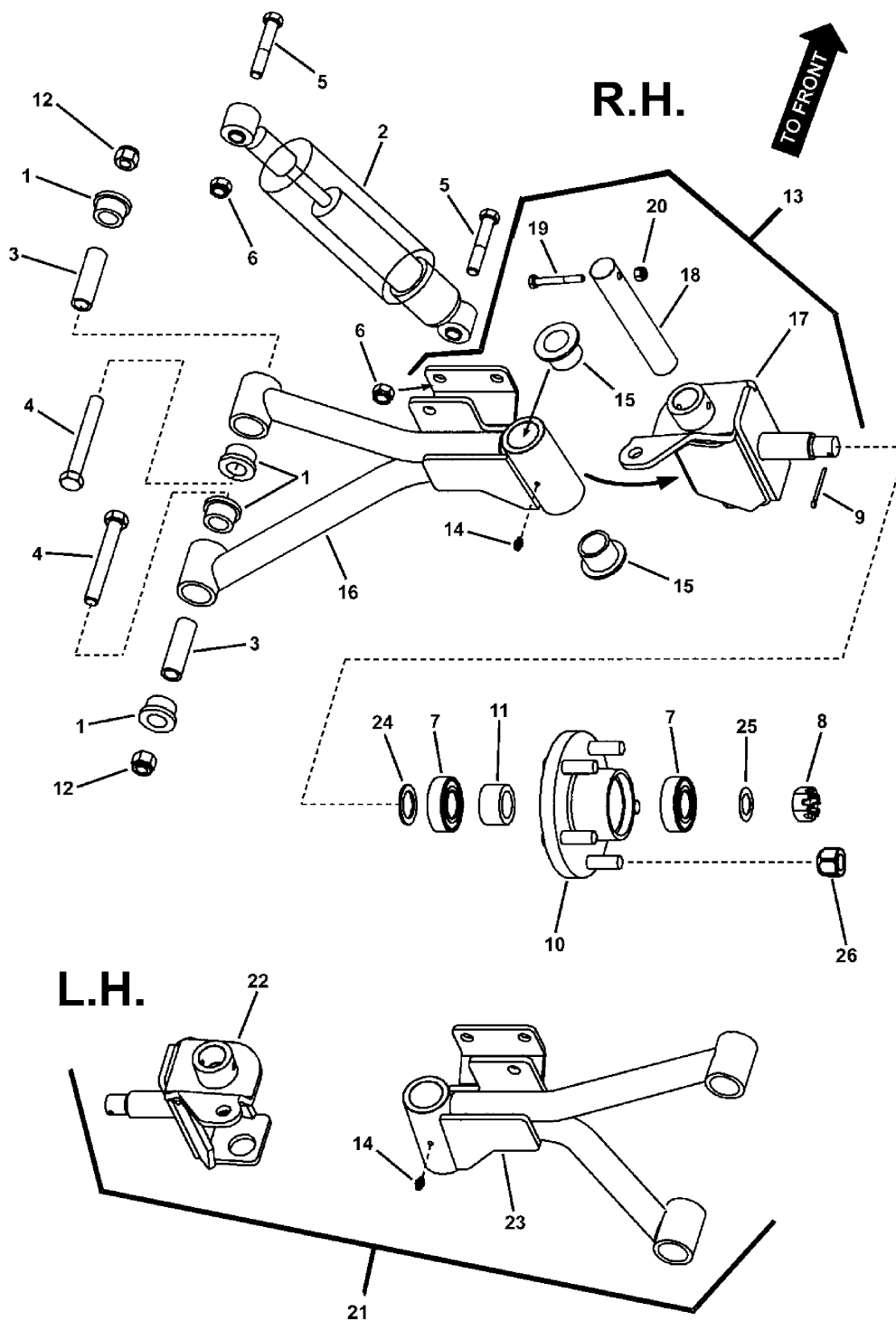
85632 - UVG1621BV

85903 - UVGT1621BV

Front Suspension Group

179fsg

NOTE: Unless noted otherwise,
use the standard hardware torque
specification chart.



The above parts group applies to the following Mfg. Nos.:

- 85668 - UV1621BV
- 85632 - UVG1621BV
- 85903 - UVGT1621BV

Front Suspension Group

REF NO	PART NO.	QTY.	DESCRIPTION
1	7029258	8	BUSHING, Suspension
2	7072614	2	ASSEMBLY, Shock/Spring
3	7029263	4	SLEEVE, Suspension
4	7029355	4	BOLT, Hex Head, 1/2-13 x 3-3/4 GR 5
5	7091703	4	CAPSCREW, Hex Head, (Special) 7/16-20 x 2-1/2 GR 5
6	7090970	4	NUT, Hex Top Lock, 7/16-20
7	7019572	4	BALL BEARING, 6205-2RS
8	7092038	2	NUT, Slotted Hex, 3/4-16 GR 5
9	7090297	2	COTTER PIN, 1/8 x 1-1/2
10	7072615	2	WHEEL HUB, Front
11	7072618	2	SPACER, Front Wheel
12	7091922	4	NUT, Hex Nyloc, 1/2-13
13	7058539	1	A-ARM & SPINDLE ASSEMBLY, RH (Includes Ref. Nos. 14 thru 20)
14	7013864	1	FITTING, Lube 3/16 Serrated
15	7023556	2	BUSHING, Caster
16	7058432	1	A-ARM ASSEMBLY, RH
17	7058485	1	SPINDLE ASSEMBLY, RH
18	7072679	1	ROD, Spindle Pivot
19	7090505	1	CAPSCREW, Hex Head, G1/4-20 x 2 R 5
20	7091603	1	NUT, Hex Nyloc, 1/4-20
21	7058596	1	A-ARM & SPINDLE ASSEMBLY, LH (Includes Ref. Nos. 14, 15, 18, 19, 20, 22 & 23)
22	7058419	1	SPINDLE ASSEMBLY, LH
23	7058484	1	A-ARM ASSEMBLY, LH
24	7016561	2	BUSHING, 14 Gage Machine
25	7031965	2	THRUST WASHER, 3/4 I.D.
26	7027192	10	LUG NUT, 1/2-20 Hex

Footnotes

The above parts group applies to the following Mfg. Nos.:

85668 - UV1621BV

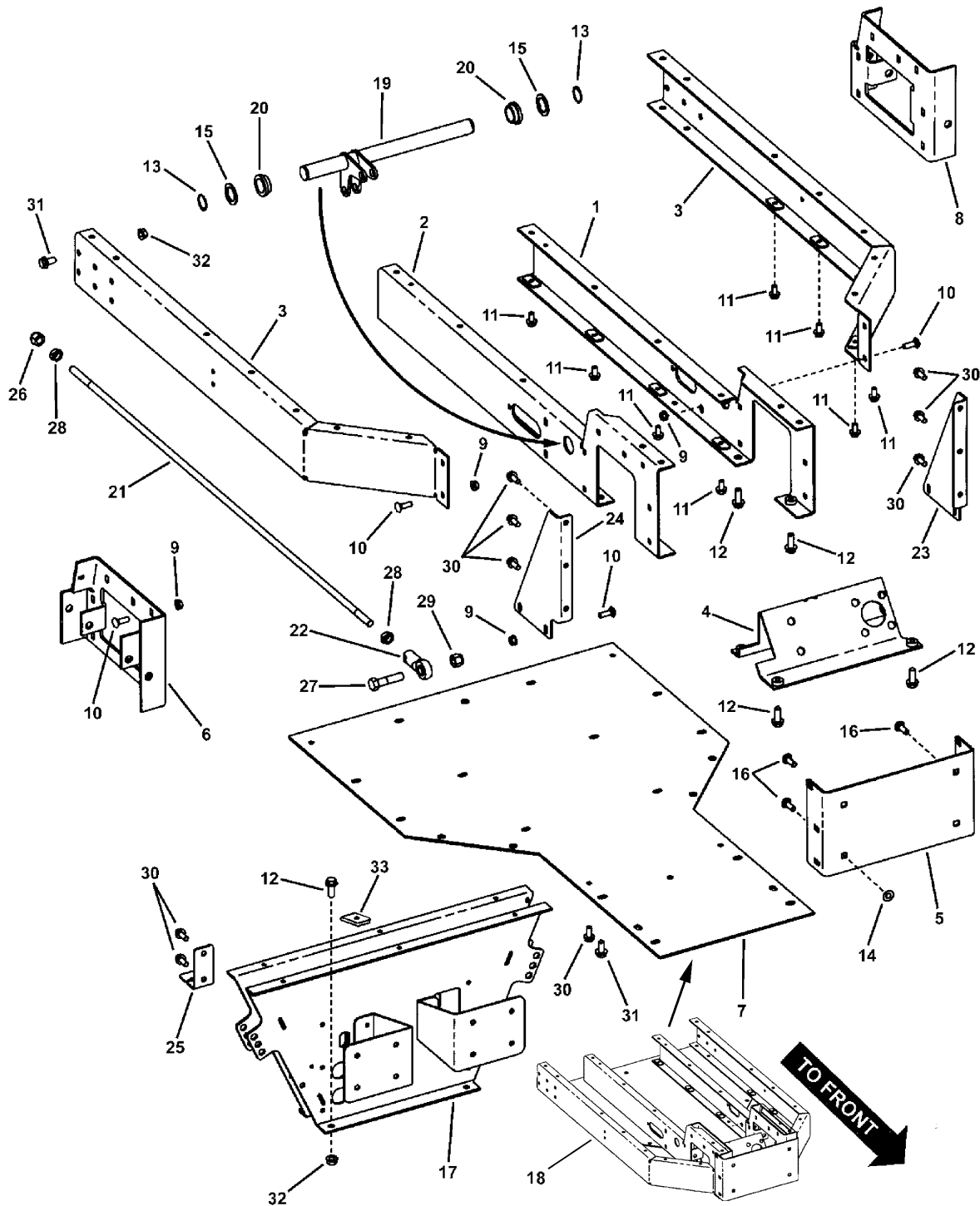
85632 - UVG1621BV

85903 - UVGT1621BV

Front Frame Group

179ffg

NOTE: Unless noted otherwise,
use the standard hardware torque
specification chart.



The above parts group applies to the following Mfg. Nos.:

- 85668 - UV1621BV
- 85632 - UVG1621BV
- 85903 - UVGT1621BV

Front Frame Group

REF NO	PART NO.	QTY.	DESCRIPTION
1	7058505	1	FRAME RAIL ASSEMBLY, Inner LH
2	7058551	1	FRAME RAIL ASSEMBLY, Inner RH
3	7058694	2	FRAME ASSEMBLY, Outer CVT
4	7058739	1	BRACKET ASSEMBLY, Steering
5	7072464	1	END, Frame
6	7072473	1	SUSPENSION PIVOT, RH
7	7072516	1	STIFFENER, Frame
8	7072619	1	SUSPENSION PIVOT, LH
9	7091601	18	NUT, Hex Flange Lock, 5/16-18 GR 5
10	7091714	18	CARRIAGE BOLT, 5/16-18 x 1 GR5
11	7091811	18	BOLT, Hex Flange Lock, 5/16-18 x 5/8 GR 5
12	7027198	6	BOLT, Hex Flange Lock, 3/8-16 x 1 GR 5
13	7012709	2	RING, 1.00 Dia. External Retaining
14	7013847	4	RETAINER, 3/8 Bolt
15	7016561	2	BUSHING, 14 Ga Machine
16	7027181	4	CARRIAGE BOLT, 3/8-16 x 1-1/4 GR 5
17	7044680	1	GRILL SUPPORT
18	7058667	1	FRONT FRAME ASSEMBLY, Assembled (Includes Ref. Nos. 1 thru 12)
19	7058648	1	BRAKE ASSEMBLY, Lower CVT
20	7072645	2	BEARING, 1 I.D.
21	7072989	1	ROD, Lower CVT Brake, 1/2-20 Thread, Both Ends
22	7073012	1	ROD END, Female 1/2-20
23	7073091	1	SUSPENSION GUSSET, LH
24	7073092	1	SUSPENSION GUSSET, RH
25	7073162	1	THROTTLE ANCHOR, Front, Used on Turf Cruiser Models 85632 & 85668
25	7074326	1	THROTTLE ANCHOR, Front, Used on Trail Cruiser Model 85903
26	7079295	1	NUT, Hex Nyloc, 1/2-20
27	7090543	1	CAPSCREW, Hex Head, 1/2-13 x 2-3/4 GR 5
28	7090559	2	NUT, Hex Jam, 1/2-20 GR 5 or B
29	7091922	1	NUT, Hex Nyloc, 1/2-13
30	7091541	8	SCREW, Hex Washer Self-Tap, 5/16-18 x 3/4
31	7091588	16	BOLT, Hex Flange Lock, 3/8-16 x 3/4 GR 5
32	7091619	20	NUT, Hex Flange Lock, 3/8-16
33	7041033	6	NUT, Tinnerman, 1/4

Footnotes

The above parts group applies to the following Mfg. Nos.:

85668 - UV1621BV

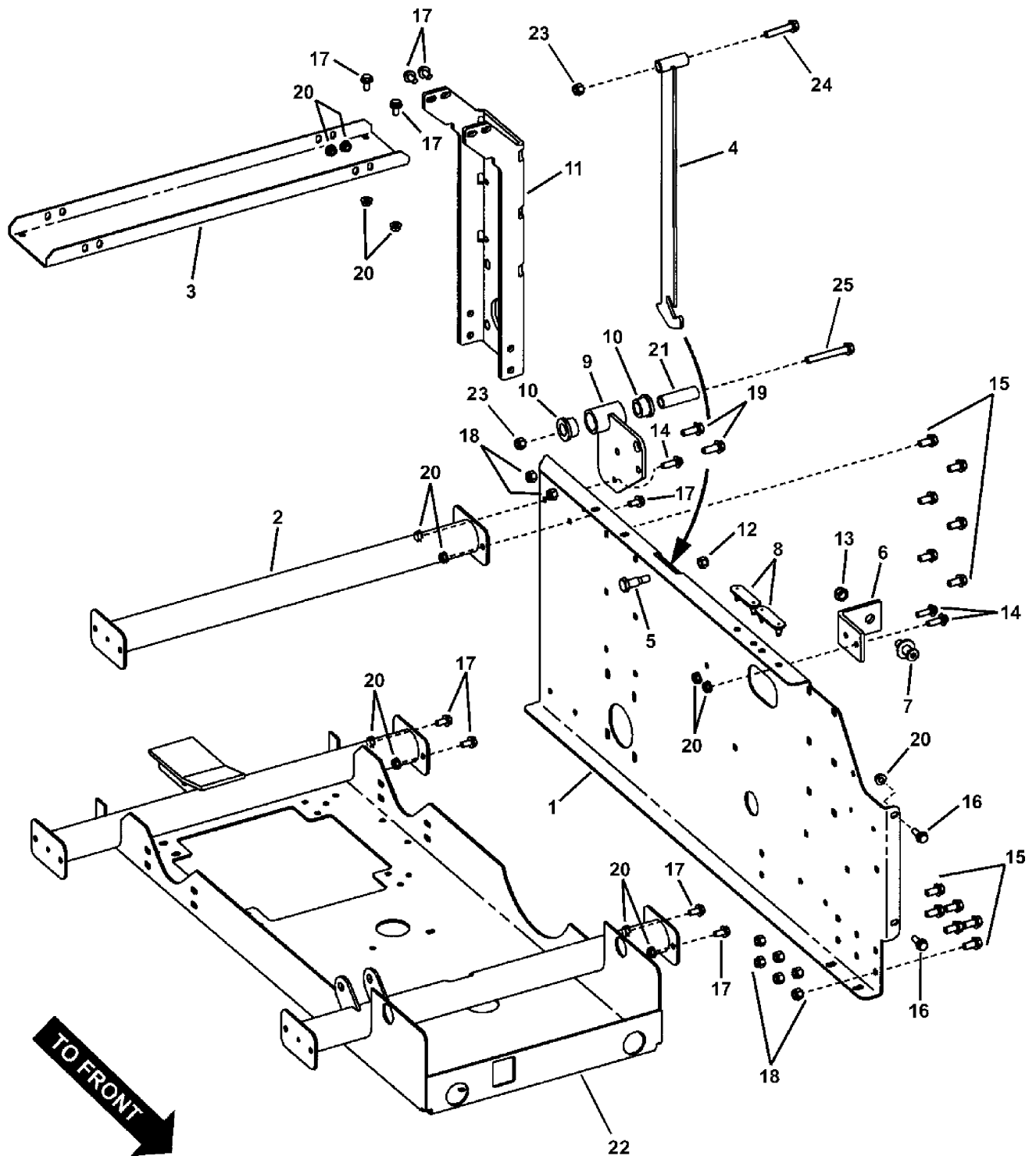
85632 - UVG1621BV

85903 - UVGT1621BV

Rear Frame Group - LH

179rfgl

NOTE: Unless noted otherwise,
use the standard hardware torque
specification chart.



The above parts group applies to the following Mfg. Nos.:

85903 - UVGT1621BV

85632 - UVG1621BV

85668 - UV1621BV

Rear Frame Group - LH

REF NO	PART NO.	QTY.	DESCRIPTION
1	7072943	1	FRAME, Rear, LH, Used on Turf Cruiser Models 85632 & 85668
1	7069499	1	FRAME, Rear, LH, Used on Trail Cruiser Model 85903
2	7058635	1	BRACE ASSEMBLY, Tube, Used on Turf Cruiser Models 85632 & 85668
2	7063350	1	BRACE ASSEMBLY, Tube, Used on Trail Cruiser Model 85903
3	7073062	1	CHANNEL, Frame Stiffener, Used on Turf Cruiser Models 85632 & 85668
3	7074318	1	CHANNEL, Frame Stiffener, Used on Trail Cruiser Model 85903
4	7058738	1	PROP ASSEMBLY, Bed
5	7015446	1	BOLT, Hex Head Shoulder, 3/8-24 x .760 GR 5
6	7028354	1	BRACKET, Bed Latch
7	7073190	1	PIN, Bed Latch Striker (7/16-14 thread)
8	7072962	4	BUMPER, Rubber
9	7058686	2	PIVOT ASSEMBLY, Dump Bed, Used on Turf Cruiser Models 85632 & 85668
9	7063351	2	PIVOT ASSEMBLY, Dump Bed, Used on Trail Cruiser Model 85903
10	7029258	4	BUSHING, Suspension
11	7072945	2	STIFFENER, CVT Frame, Used on Turf Cruiser Models 85632 & 85668
11	7035762	2	STIFFENER, CVT Frame, Used on Trail Cruiser Model 85903
12	7091518	1	NUT, Hex Nyloc, 3/8-24
13	7091917	1	NUT, Hex Nyloc, 7/16-14
14	7091681	6	BOLT, Hex Flange Lock, 5/16-18 x 1
15	7090815	24	SCREW, Hex Washer Self-Tap, 3/8-16 x 3/4
16	7091905	26	BOLT, Hex Flange Lock, 5/16-18 x 7/8
17	7091811	22	BOLT, Hex Flange Lock, 5/16-18 x 5/8 GR 5
18	7091299	21	NUT, Hex Nyloc, 3/8-16
19	7027198	12	BOLT, Hex Flange Lock, 3/8-16 x 1 GR 5
20	7091601	53	NUT, Hex Flange Lock, 5/16-18 GR 5
21	7029263	2	SLEEVE, Suspension
22	7046206	1	DRIVE BASE ASSEMBLY
23	7091922	3	NUT, Hex Nyloc, 1/2-13
24	7091821	1	CAPSCREW, Hex Head, 1/2-13 x 3
25	7029355	2	BOLT, Hex Head, 1/2-13 x 3-3/4 GR 5

Footnotes

The above parts group applies to the following Mfg. Nos.:

85903 - UVGT1621BV

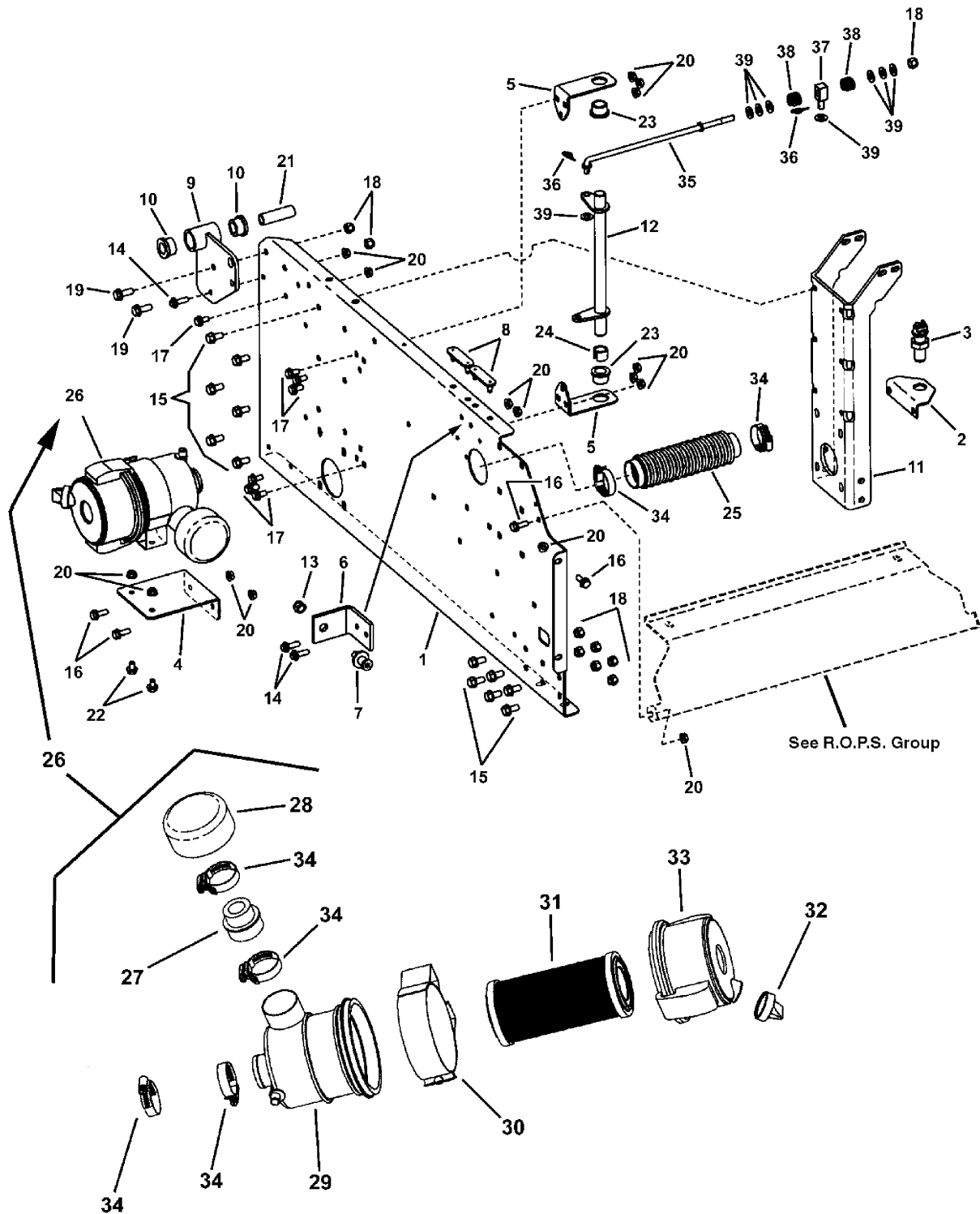
85632 - UVG1621BV

85668 - UV1621BV

Rear Frame Group - RH

NOTE: Unless noted otherwise,
use the standard hardware torque
specification chart.

179rfgr



The above parts group applies to the following Mfg. Nos.:

- 85668 - UV1621BV
- 85632 - UVG1621BV
- 85903 - UVGT1621BV

Rear Frame Group - RH

REF NO	PART NO.	QTY.	DESCRIPTION
1	7072571	1	FRAME, Rear, RH, Used on Turf Cruiser Models 85632 & 85668
1	7068000	1	FRAME, Rear, RH, Used on Trail Cruiser Model 85903
2	7027967	1	BRACKET, Speed Sensor (weldment)
3	7026570	1	SENSOR, Speed
4	7034054	1	BRACKET, Air Filter
5	7072563	2	BRACKET, Transmission Shift
6	7028354	1	BRACKET, Bed Latch
7	7073190	1	PIN, Bed Latch Striker
8	7072962	4	BUMPER, Rubber
9	7058686	2	PIVOT ASSEMBLY, Dump Bed, Used on Turf Cruiser Models 85632 & 85668
9	7063351	2	PIVOT ASSEMBLY, Dump Bed, Used on Trail Cruiser Model 85903
10	7029258	4	BUSHING, Suspension
11	7072945	2	STIFFENER, CVT Frame, Used on Turf Cruiser Models 85632 & 85668
11	7035762	2	STIFFENER, CVT Frame, Used on Trail Cruiser Model 85903
12	7058636	1	SHAFT ASSEMBLY, Shifter
13	7091917	1	NUT, Hex Nyloc, 7/16-14
14	7091681	6	BOLT, Hex Flange Lock, 5/16-18 x 1
15	7090815	24	SCREW, Hex Washer Self-Tap, 3/8-16 x 3/4
16	7091905	26	BOLT, Hex Flange Lock, 5/16-18 x 7/8
17	7091811	22	BOLT, Hex Flange Lock, 5/16-18 x 5/8 GR 5
18	7091299	21	NUT, Hex Nyloc, 3/8-16
19	7027198	12	BOLT, Hex Flange Lock, 3/8-16 x 1 GR 5
20	7091601	53	NUT, Hex Flange Lock, 5/16-18 GR 5
21	7029263	2	SLEEVE, Suspension
22	7090721	2	BOLT, Hex Flange Lock, 5/16-18 x 1/2
23	7035496	2	BEARING, .750 I.D.
24	7012068	1	RING, Blue
25	7026737	1	FLEX TUBE, 1.75 x 1.75 x 12
26	7058912	1	ASSEMBLY, Air Filter (Includes Ref. Nos. 27 thru 34)
27	7073435	1	RESTRICTER, Air Cleaner
28	7073436	1	PRECLEANER, Air Filter
29	7073437	1	HOUSING, Air Filter
30	7073438	1	BRACKET, Air Filter Mounting
31	7073439	1	ELEMENT, Air Filter
32	7073440	1	VALVE, Air Filter Drain
33	7073443	1	CAP, Air Filter
34	7073488	4	CLAMP, Hose
35	7073002	1	ROD, Transmission Shift (3/8-16 thread)
36	7024159	2	COTTER PIN, 3/8 Self Lock
37	7072495	1	SWIVEL, 3/8 w/thru hole
38	7028036	2	SPRING, Friction Pack
39	7090122	7	WASHER, 3/8 SAE Flat

Footnotes

The above parts group applies to the following Mfg. Nos.:

85668 - UV1621BV

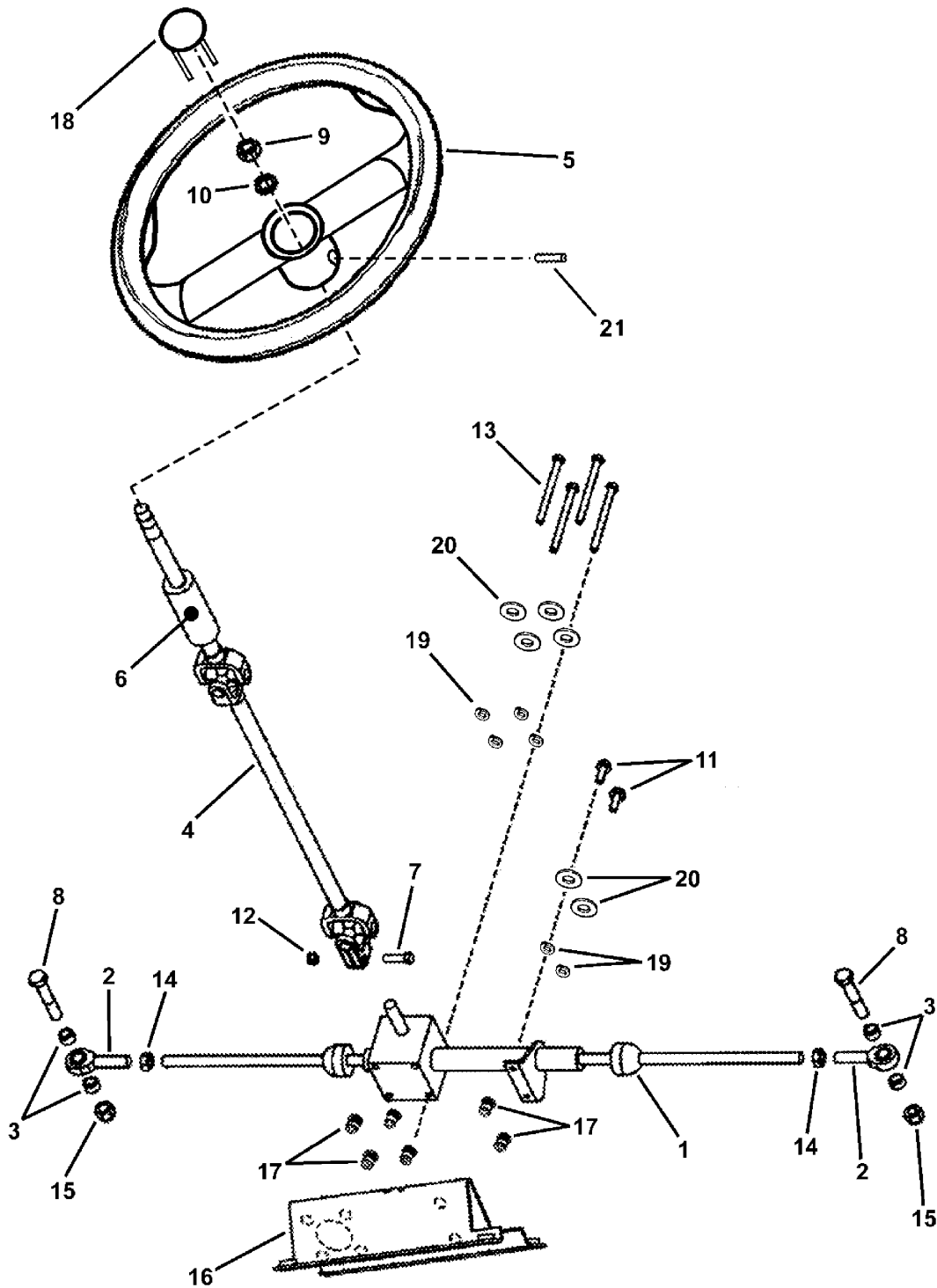
85632 - UVG1621BV

85903 - UVGT1621BV

Steering Group

NOTE: Unless noted otherwise,
use the standard hardware torque
specification chart.

179stgp



The above parts group applies to the following Mfg. Nos.:

85668 - UV1621BV

85632 - UVG1621BV

85903 - UVGT1621BV

Steering Group

REF NO	PART NO.	QTY.	DESCRIPTION
1	7028075	1	RACK & PINION ASSEMBLY, Steering
2	7036465	2	BALL JOINT, 1/2-20
3	7072637	4	SPACER, 1/2 I.D., 5/8 O.D. x .375
4	7027496	1	STEERING COLUMN
5	1722318	1	STEERING WHEEL
6	7072638	1	COVER, Steering Shaft
7	7091184	1	CAPSCREW, Hex Head, M10-1.50 x 40mm
8	7090544	2	CAPSCREW, Hex Head, 1/2-13 x 2-3/4 GR 5
9	7092036	1	NUT, Hex, M16
10	7092042	1	WASHER, 16mm Split Lock
11	7091905	2	BOLT, Hex Flange Lock, 5/16-18 x 7/8
12	7091187	1	NUT, Hex Nyloc, 10mm-1.50
13	7091058	4	CAPSCREW, Hex Head, 5/16-18 x 3-3/4
14	7090559	2	NUT, Hex Jam, 1/2-20 GR 5 or B
15	7091922	2	NUT, Hex Nyloc, 1/2-13
16	7058739	1	BRACKET ASSEMBLY, Steering
17	7092079	6	INSERT, 5/16-18 Hex Threaded
18	1725024	1	CENTER CAP, Steering Wheel
19	7091315	6	WASHER, .32 x .58 x .08 Split Lock
20	7090188	6	WASHER, .34 x .69 x .08 Flat
21	7090845	1	ROLL PIN, 5/16 x 1-1/2

Footnotes

The above parts group applies to the following Mfg. Nos.:

85668 - UV1621BV

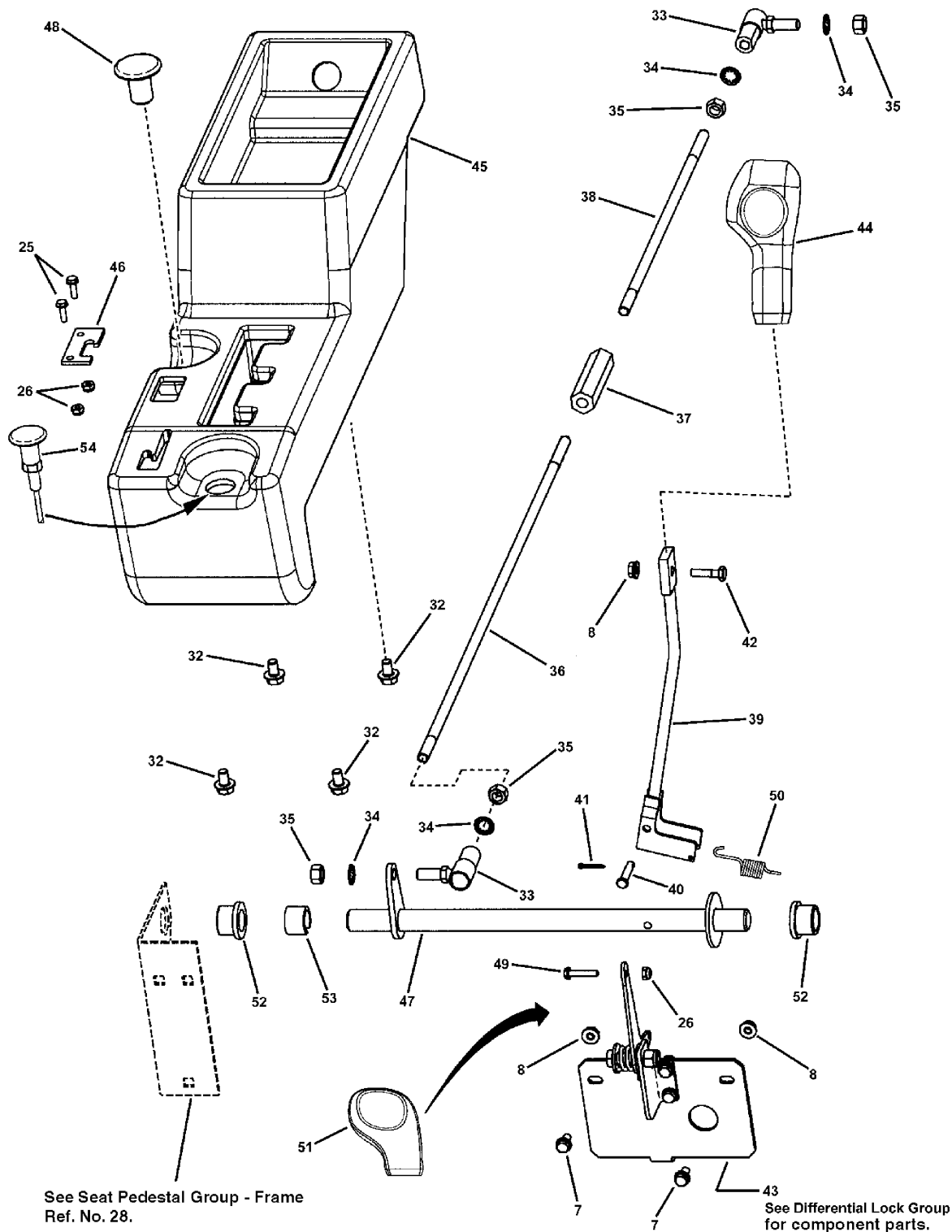
85632 - UVG1621BV

85903 - UVGT1621BV

Seat Pedestal Group - Controls

NOTE: Unless noted otherwise,
use the standard hardware torque
specification chart.

179spgc



See Seat Pedestal Group - Frame
Ref. No. 28.

See Differential Lock Group
for component parts.

The above parts group applies to the following Mfg. Nos.:

- 85668 - UV1621BV
- 85632 - UVG1621BV
- 85903 - UVGT1621BV

Seat Pedestal Group - Controls

REF NO	PART NO.	QTY.	DESCRIPTION
7	7091579	2	SCREW, Hex Flange Lock, 1/4-20 x 1/2 GR 5
8	7091584	3	NUT, Hex Flange Lock, 1/4-20 GR 5
25	7091240	2	SCREW, Hex Washer Head Machine, #10-32 x 5/8
26	7090376	3	NUT, Hex Nyloc, #10-32
32	7090721	4	BOLT, Hex Flange Lock, 5/16-18 x 1/2
33	7010745	2	BALL JOINT, 3/8-24 Thread
34	7090390	4	WASHER, 3/8 Internal Tooth Lock
35	7091630	5	NUT, Hex, 3/8-24 GR B
36	7034583	1	ROD, CVT Shift, 21-5/8 Long (3/8-24 thread, both ends)
37	7034610	1	HEX BLOCK, Shift Adj. (3/8-24 thread, LH & RH)
38	7034584	1	ROD, CVT Shift, 12-1/8 Long (3/8-24 thread, LH & RH)
39	7041808	1	ROD ASSEMBLY, Shift
40	7011021	1	CLEVIS PIN, 1/4 x 1-1/4
41	7091597	1	COTTER PIN, 3/32 x 3/4
42	7027230	1	CAPSCREW, Hex Head, 1/4-20 x 1 GR 5
43	7047084	1	DIFFERENTIAL LOCK ASSEMBLY, Used on Turf Cruiser Models 85632 & 85668 (See Differential Lock Group for component parts.)
43	7063166	1	DIFFERENTIAL LOCK ASSEMBLY, Used on Trail Cruiser Model 85903 (See Differential Lock Group for component parts.)
44	1722303	1	HANDLE, Shift
45	7072718	1	CONSOLE, UV-2
46	7046805	1	CONTACT PLATE, Differential Lock
47	7041011	1	SHIFTER, Transmission (weldment)
48	1725277	1	KNOB, Park Brake, Red, Used on Turf Cruiser Models 85632 & 85668
48	1715946	1	KNOB, Parking, Used on Trail Cruiser Model 85903
49	960604	1	SCREW, Hex Washer Head Slot, #10 x 1
50	7043859	1	SPRING, Transmission Extension (Short)
51	1725337	1	KNOB, Throttle (Red)
52	7035496	2	BEARING, .750 I.D.
53	7012068	1	RING, Rear Lift Arm, Blue
54	7027908	1	CABLE, Choke, B&S 16HP Vanguard

Footnotes

The above parts group applies to the following Mfg. Nos.:

85668 - UV1621BV

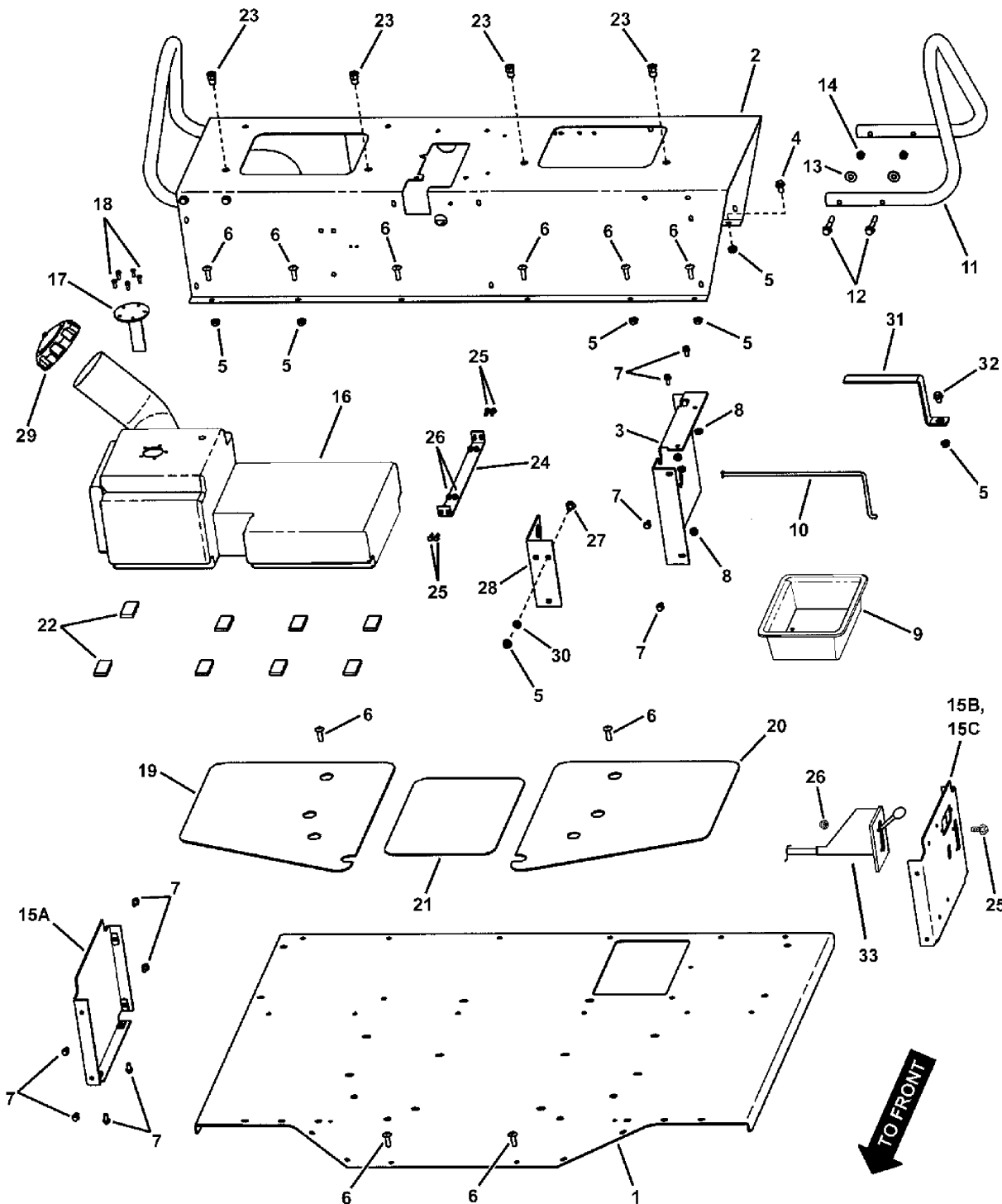
85632 - UVG1621BV

85903 - UVGT1621BV

Seat Pedestal Group - Frame

NOTE: Unless noted otherwise,
use the standard hardware torque
specification chart.

179spgf



The above parts group applies to the following Mfg. Nos.:

- 85632 - UVG1621BV
- 85668 - UV1621BV
- 85903 - UVGT1621BV

Seat Pedestal Group - Frame

REF NO	PART NO.	QTY.	DESCRIPTION
1	7075874	1	FLOORPAN, U.V., Used on Turf Cruiser Models 85632 & 85668
1	7063300	1	FLOORPAN, U.V., Used on Trail Cruiser Model 85903
2	7075869	1	PEDESTAL, Seat, U.V., Used on Turf Cruiser Models 85632 & 85668
2	7063290	1	PEDESTAL, Seat, U.V., Used on Trail Cruiser Model 85903
3	7024538	1	BRACKET, Seat Pedestal Support, Used on Turf Cruiser Models 85632 & 85668
3	7063288	1	BRACKET, Seat Pedestal Support, Used on Trail Cruiser Model 85903
4	7091811	6	BOLT, Hex Flange Lock, 5/16-18 x 5/8 GR 5
5	7091601	14	NUT, Hex Flange Lock, 5/16-18 GR 5
6	7092048	24	SCREW, Cross Recessed Round Head Machine, 5/16-18 x 1 GR 5
7	7091579	22	SCREW, Hex Flange Lock, 1/4-20 x 1/2 GR 5
8	7091584	12	NUT, Hex Flange Lock, 1/4-20 GR 5
9	7017853	1	TRAY, Battery, Used on Turf Cruiser Models 85632 & 85668
10	7072629	1	RETAINER, Battery, Used on Trail Cruiser Model 85903
11	7072586	2	HANDLE, Seat Pedestal
12	7091592	8	BOLT, Hex Flange Lock, 5/16-18 x 2 GR 5
13	7091528	8	WASHER, .375 x .875 x .083 Flat
14	7091298	8	NUT, Hex Nyloc, 5/16-18
15A	7029276	2	END CAP ASSEMBLY, Qty 1 Used on Model 85632
15A	7061329	1	END CAP ASSEMBLY, RH, Used on Trail Cruiser Model 85903
15B	7029164	1	END CAP ASSEMBLY, Power Generator, LH, Used on Model 85632
15C	7074319	1	END CAP ASSEMBLY, Power Generator, LH, Used on Trail Cruiser Model 85903
16	7046974	1	GAS TANK, UV
17	7046975	1	SENDING UNIT, UV Gastank
18	7091942	5	SCREW, Pan Head Machine, #10-24 x 1/2
19	7026190	1	FOOTPAD, RH UV-2
20	7026290	1	FOOTPAD, LH, UV-2
21	7026405	1	FOOTPAD, Center, UV-2
22	7077345	8	PAD, Gas Tank
23	7092079	4	INSERT, 5/16-18 Hex Threaded
24	7034101	1	GAS TANK STRAP, Used on Turf Cruiser Models 85632 & 85668
24	7063158	1	GAS TANK STRAP, Used on Trail Cruiser Model 85903
25	7091240	6	SCREW, Hex Washer Head Machine, #10-32 x 5/8
26	7090376	6	NUT, Hex Nyloc, #10-32
27	7090799	3	CARRIAGE BOLT, 5/16-18 x 5/8 GR 5
28	7022229	1	PIVOT ASSEMBLY, Hi-Lo Cam
29	7075135	1	GAS CAP
30	7011791	3	RETAINER, 5/16 Bolt
31	7034358	1	BRACKET, Battery Hold Down
32	7090721	5	BOLT, Hex Flange Lock, 5/16-18 x 1/2
33	7027498	1	THROTTLE, Remote, Powerlink, Used on Model 85632 & 85903

Footnotes

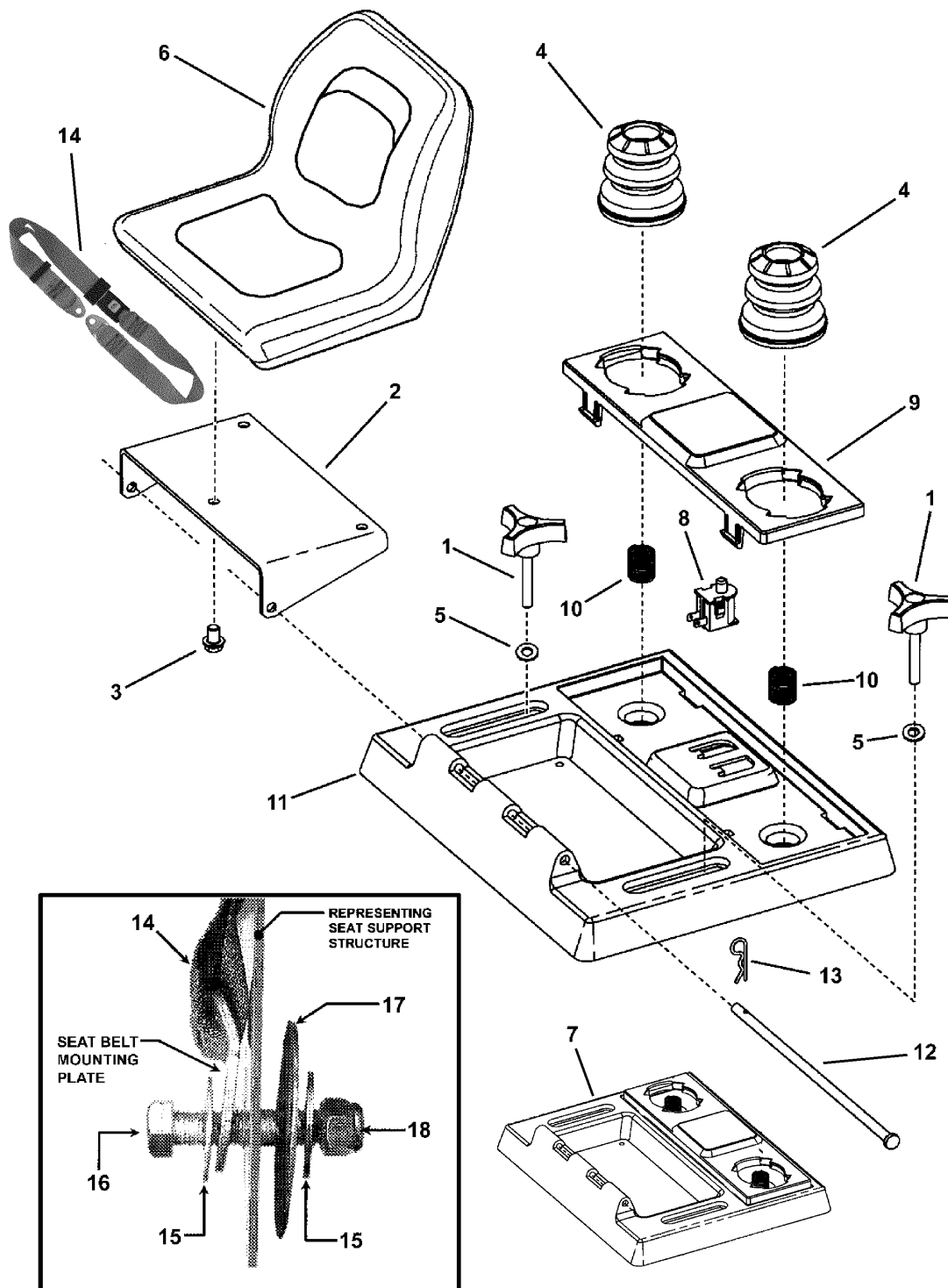
The above parts group applies to the following Mfg. Nos.:

85632 - UVG1621BV
 85668 - UV1621BV
 85903 - UVGT1621BV

Seat Group

NOTE: Unless noted otherwise,
use the standard hardware torque
specification chart.

179seat



The above parts group applies to the following Mfg. Nos.:

85903 - UVGT1621BV

85632 - UVG1621BV

85668 - UV1621BV

Seat Group

REF NO	PART NO.	QTY.	DESCRIPTION
1	7017875	4	KNOB, 3 Prong, 5/16-18 x 2 Stud
2	7033318	2	SUPPORT, Seat, Upper
3	7091525	6	BOLT, Hex Flange Lock, 5/16-18 x 1/2 GR 5
4	7019109	4	COVER, Spring (Rubber)
5	7090188	4	WASHER, .34 x .69 x .08 Flat
6	7035271	2	SEAT, Milsco XB-150, No Logo
7	7063295	2	ASSEMBLY, Seat Support, UV2 (Includes Ref. Nos. 8 thru 11)
8	7015707	1	SWITCH, Seat (NO)
9	7028580	1	HOLDER, Seat Cushion E.C.
10	7073266	2	SPRING, Cushion Holder
11	7074204	1	SUPPORT, Seat E.C.
12	7074452	2	ROD, Seat Hinge
13	7091503	2	HAIR PIN, 3/32 x 1-1/2
14	7073532	2	SEAT BELT
15	7090991	4	WASHER, 7/16 Flat (Type A, Wide)
16	*	4	CAPSCREW, Hex Head, 7/16-20 x 2 GR 5
17	*	4	WASHER, 1/2 I.D. x 2-1/2 O.D. Flat
18	*	4	NUT, Hex Nyloc, 7/16-20

Footnotes

* Fastener parts are supplied by Femco with seat belt.

The above parts group applies to the following Mfg. Nos.:

85903 - UVGT1621BV

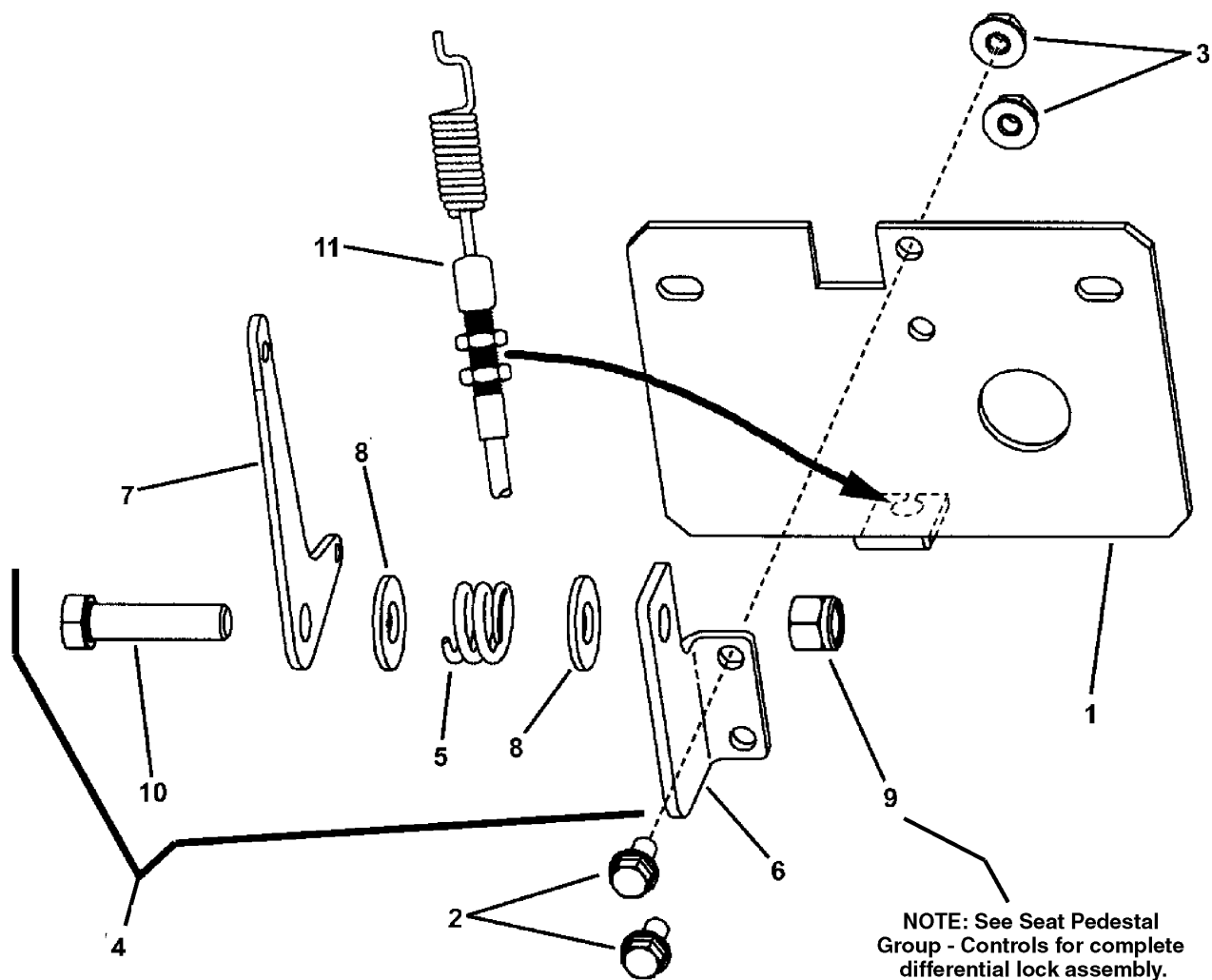
85632 - UVG1621BV

85668 - UV1621BV

Differential Lock Group

179d1g

NOTE: Unless noted otherwise,
use the standard hardware torque
specification chart.



The above parts group applies to the following Mfg. Nos.:

85903 - UVGT1621BV

85668 - UV1621BV

85632 - UVG1621BV

Differential Lock Group

REF NO	PART NO.	QTY.	DESCRIPTION
1	7046802	1	PLATE, Differential Lock Mounting
2	7091579	2	SCREW, Hex Flange Lock, 1/4-20 x 1/2 GR 5
3	7091584	2	NUT, Hex Flange Lock, 1/4-20 GR 5
4	7041788	1	LOCK, Differential (Includes Ref. Nos. 5 thru 10)
5	7028036	1	SPRING, Friction Pack
6	7046803	1	BRACKET, Differential Lock
7	7074677	1	LEVER, Differential Lock
8	7090517	2	WASHER, 3/8 SAE Flat
9	7091299	1	NUT, Hex Nyloc, 3/8-16
10	7091497	1	CAPSCREW, Hex Washer Head, 3/8-16 x 1-1/2 GR 5
11	7072939	1	CABLE, Differential Lock

Footnotes

The above parts group applies to the following Mfg. Nos.:

85903 - UVGT1621BV

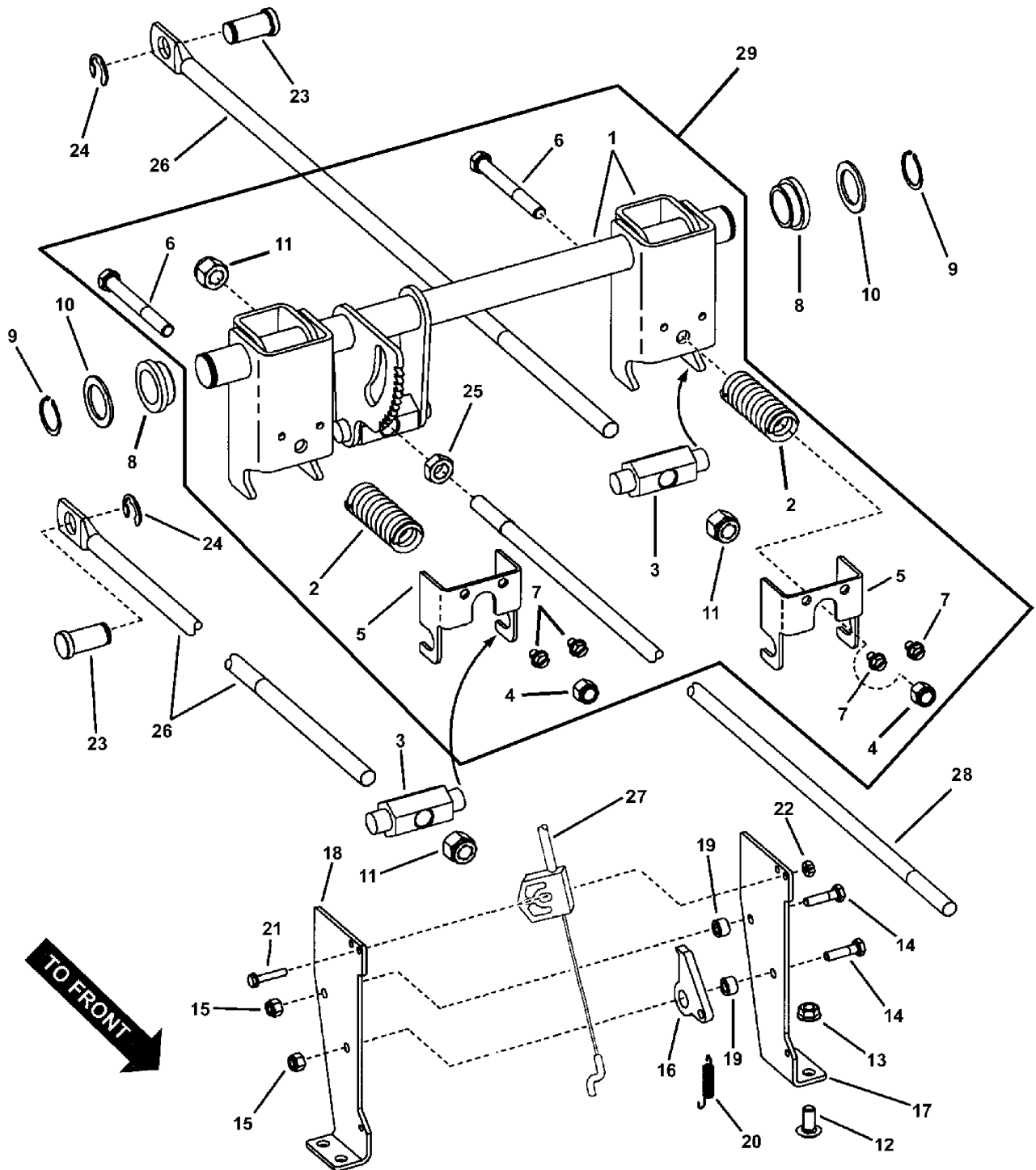
85668 - UV1621BV

85632 - UVG1621BV

Brake Assembly

NOTE: Unless noted otherwise,
use the standard hardware torque
specification chart.

179braa



The above parts group applies to the following Mfg. Nos.:

- 85632 - UVG1621BV
- 85903 - UVGT1621BV
- 85668 - UV1621BV

Brake Assembly

REF NO	PART NO.	QTY.	DESCRIPTION
1	7058683	1	BRAKE SHAFT ASSEMBLY, Rear CVT
2	7072986	2	SPRING, CVT Brake
3	7073015	2	BRAKE SWIVEL, w/.531 Thru Hole
4	7091299	2	NUT, Hex Nyloc, 3/8-16
5	7073116	2	BRACKET, Swivel Retainer, Used on Model 85668
5	7063361	2	BRACKET, Swivel Retainer, Used on Model 85632 & 85903
6	7092055	2	CAPSCREW, Hex Head, 3/8-16 x 3-1/4 GR 5
7	7091293	4	SCREW, Hex Washer Self-Tap, 1/4-20 x 3/8
8	7072645	2	BEARING, 1 I.D.
9	7012709	2	RING, 1.00 Dia. External Retaining
10	7016561	2	BUSHING, 14 Ga Machine
11	7079295	3	NUT, Hex Nyloc, 1/2-20
12	7091508	4	CARRIAGE BOLT, 5/16-18 x 3/4 GR 5
13	7091601	4	NUT, Hex Flange Lock, 5/16-18 GR 5
14	7027230	6	CAPSCREW, Hex Head, 1/4-20 x 1 GR 5
15	7091603	2	NUT, Hex Nyloc, 1/4-20
16	7073097	1	PAWL, Park Brake
17	7073098	1	BRACKET, LH Park Brake Pawl Pivot, Used on Model 85668
17	7063362	1	BRACKET, LH Park Brake Pawl Pivot, Used on Model 85632 & 85903
18	7073099	1	BRACKET, RH Park Brake Pawl Pivot, Used on Model 85668
18	7063363	1	BRACKET, RH Park Brake Pawl Pivot, Used on Model 85632 & 85903
19	7073100	2	SPACER, Park Brake
20	7072550	1	SPRING, Pawl Return
21	7090299	1	SCREW, Hex Washer Self-Tap, #10-32 x 1
22	7091801	1	NUT, Hex Center Lock, #10-32
23	7073013	2	PIN, Brake Anchor
24	7071953	2	RETAINING RING, 5/8 Shaft
25	7090559	1	NUT, Hex Jam, 1/2-20 GR 5 or B
26	7072985	2	BRAKE ROD, Rear CVT
27	7027941	1	CABLE, Parking Brake
28	7072989	1	ROD, Lower CVT Brake, 1/2-20 Thread, Both Ends
29	7058751	1	BRAKE ASSEMBLY, Utility Vehicle (Includes Ref. Nos. 1 thru 7), Used on Model 85668
29	7063360	1	BRAKE ASSEMBLY, Utility Vehicle (Includes Ref. Nos. 1 thru 7), Used on Model 85632 & 85903

Footnotes

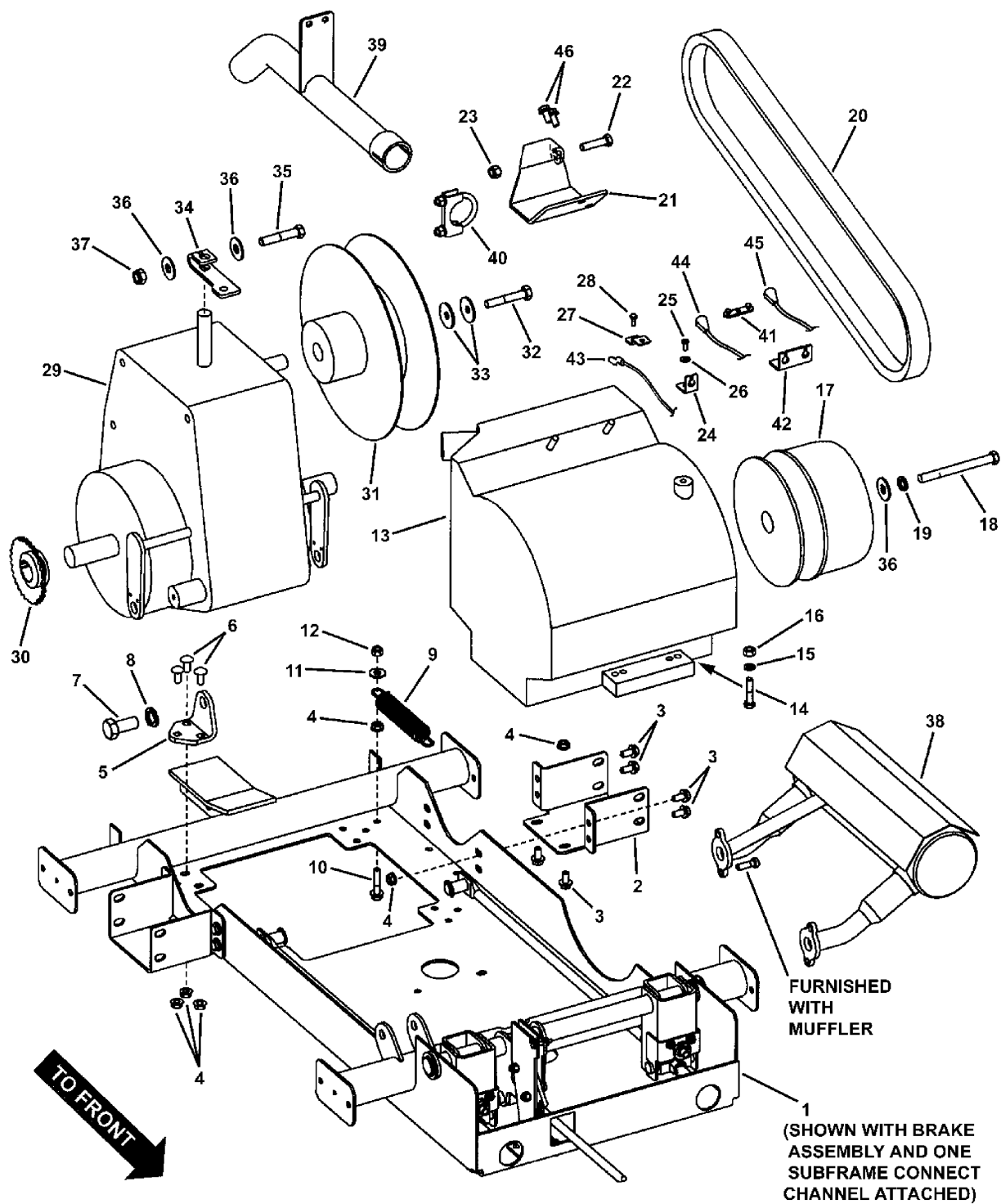
The above parts group applies to the following Mfg. Nos.:

85632 - UVG1621BV
85903 - UVGT1621BV
85668 - UV1621BV

Drive Base Group

179dbg

NOTE: Unless noted otherwise,
use the standard hardware torque
specification chart.



The above parts group applies to the following Mfg. Nos.:

85668 - UV1621BV

85632 - UVG1621BV

85903 - UVGT1621BV

Drive Base Group

REF NO	PART NO.	QTY.	DESCRIPTION
1	7046206	1	DRIVE BASE ASSEMBLY
2	7073106	2	CHANNEL, Subframe Connect
3	7091811	12	BOLT, Hex Flange Lock, 5/16-18 x 5/8 GR 5
4	7091601	18	NUT, Hex Flange Lock, 5/16-18 GR 5
5	7074227	4	BRACKET, Transmission Mount w/Sq. Holes, Used on Model 85668
5	7067000	4	BRACKET, Transmission Mount w/Sq. Holes, Used on Model 85632 & 85903
6	7091508	12	CARRIAGE BOLT, 5/16-18 x 3/4 GR 5
7	7092041	4	CAPSCREW, Hex Head, M16 x 2 x 35MM
8	7092042	4	WASHER, 16MM Split Lock
9	7073470	2	SPRING, Brake Return
10	7091602	2	BOLT, Hex Flange Lock, 5/16-18 x 1-1/2 GR 5
11	7091528	6	WASHER, .375 x .875 x .083 Flat
12	7091298	2	NUT, Hex Nyloc, 5/16-18
13	7072673	1	*ENGINE, B&S 16 HP Vanguard, Used on Model 85668, Model # 305447, Type # 0110, Trim # E1
13	7075877	1	*ENGINE, B&S 16 HP w/Generator, Used on Model 85632 & 85903, Model # 30544A, Type # 0111, Trim # E1
14	7091609	2	CAPSCREW, Hex Head, 5/16-24 x 1-1/2 GR 5
15	7090187	8	WASHER, 5/16 Split Lock
16	7091297	4	NUT, Hex, 5/16-24 GR 5 or B
17	7072970	1	CLUTCH, CVT Drive
18	7092130	1	CAPSCREW, Hex Head, 7/16-20 x 4-1/2 GR 5
19	7091301	1	WASHER, 7/16 Split Lock
20	7072935	1	BELT, CVT (Cogged; 58.15 effective length)
21	7071764	1	TORQUE BRACKET, Utility Vehicle
22	7091497	1	CAPSCREW, Hex Washer Head, 3/8-16 x 1-1/2 GR 5
23	7091299	1	NUT, Hex Nyloc, 3/8-16
24	7035651	1	ANCHOR, Throttle
25	7092050	1	SCREW, Pan Head, Phillips, #10-32 x 1/2
26	7090601	1	WASHER, #10 External Tooth Lock
27	7029378	1	THROTTLE PLATE, B&S Vanguard
28	7092121	1	SCREW, Hex Head Shoulder, #10-32 x 1/2, Used on Model 85632 & 85903
29	7072812	1	TRANSAXLE, Turf Torq KT35C
30	7027959	1	SPROCKET, # 35-3/8 Pitch
31	7072971	1	PULLEY, CVT Drive
32	7091029	1	CAPSCREW, Hex Head, M10-1.5 x 60 (w/nyloc patch)
33	7012063	2	WASHER, Cone
34	7072982	1	SHIFT ARM, CVT
35	7091028	1	CAPSCREW, Hex Head, 7/16-20 x 2-1/4 GR 5
36	7090991	3	WASHER, 7/16 Flat (Type A, Wide)
37	7090970	1	NUT, Hex Top Lock, 7/16-20
38	7050498	1	MUFFLER, 16 HP B&S Vanguard
39	7036511	1	TAILPIPE, UV-2
40	3039123	1	MUFFLER CLAMP, 1-5/8

Footnotes

* See your local Briggs & Stratton distributor for parts & service.

The above parts group applies to the following Mfg. Nos.:

85668 - UV1621BV

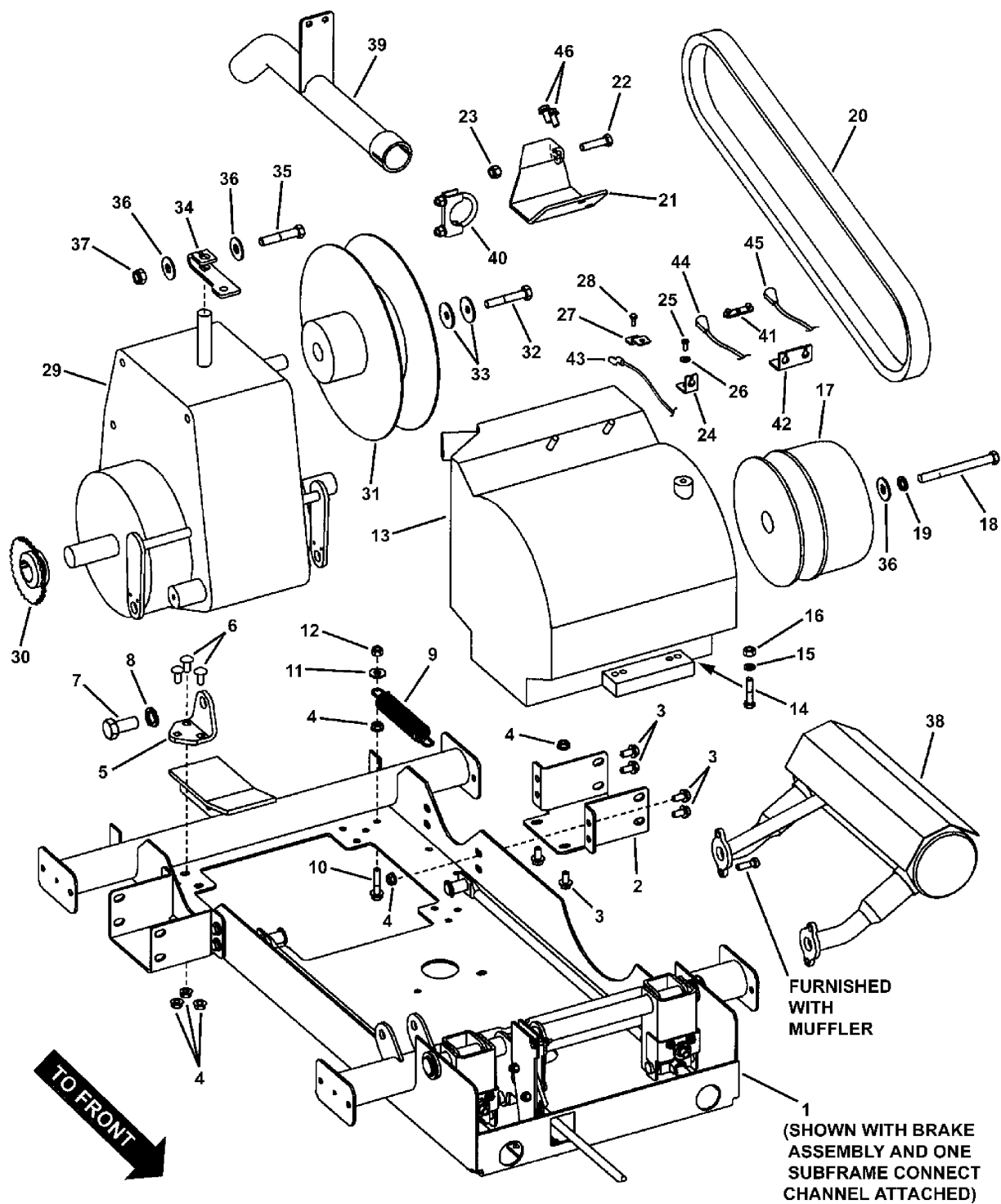
85632 - UVG1621BV

85903 - UVGT1621BV

Drive Base Group

179dbg

NOTE: Unless noted otherwise,
use the standard hardware torque
specification chart.



The above parts group applies to the following Mfg. Nos.:

85668 - UV1621BV

85632 - UVG1621BV

85903 - UVGT1621BV

Drive Base Group

REF NO	PART NO.	QTY.	DESCRIPTION
41	7046898	1	THROTTLE LINK, B&S Vanguard, Used on Model 85632 & 85903
42	7046972	1	BRACKET, Throttle Adjustment, Used on Model 85632 & 85903
43	7029377	1	CABLE, Throttle, 16 HP Vanguard, Used on Model 85668
44	7027497	1	CABLE, Throttle, Pedal, Powerlink, Used on Model 85632 & 85903
45	7027498	1	THROTTLE, Remote, Powerlink, Used on Model 85632 & 85903
46	7091925	1	CAPSCREW, Hex Head, M8-1.25 x 16

Footnotes

* See your local Briggs & Stratton distributor for parts & service.

The above parts group applies to the following Mfg. Nos.:

85668 - UV1621BV

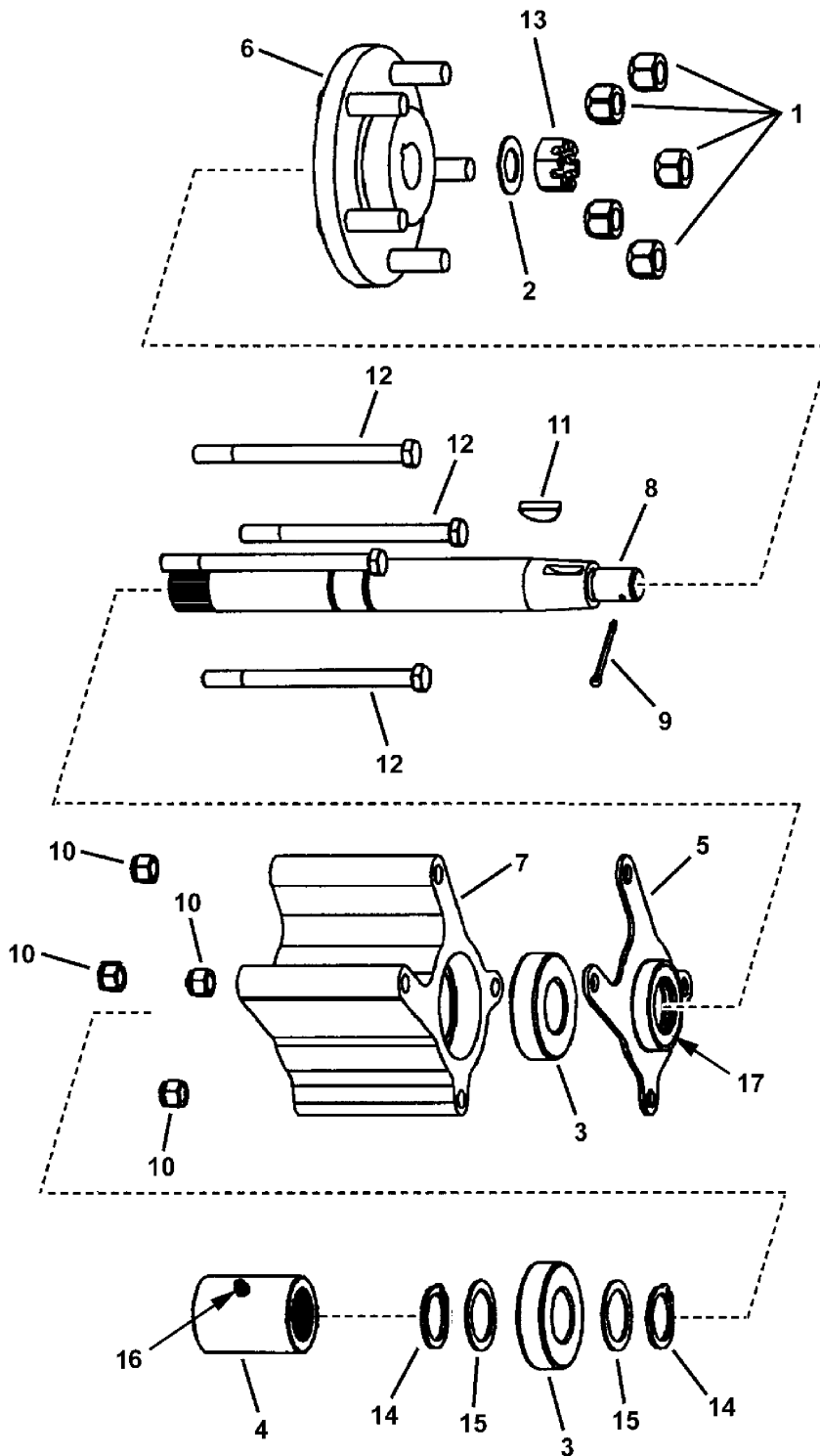
85632 - UVG1621BV

85903 - UVGT1621BV

CVT Axle Group

NOTE: Unless noted otherwise,
use the standard hardware torque
specification chart.

179cvta



The above parts group applies to the following Mfg. Nos.:

85668 - UV1621BV
85903 - UVGT1621BV
85632 - UVG1621BV

CVT Axle Group

REF NO	PART NO.	QTY.	DESCRIPTION
1	7027192	5	LUG NUT, 1/2-20 Hex
2	7032027	2	WASHER, .77 x 1.5 x .06 Flat
3	7035602	2	BEARING, 30mm x 62mm
4	7058642	2	ASSEMBLY, Coupling w/Lube Fitting (Includes Ref. Nos. 16)
5	7058650	1	ASSEMBLY, Plate/Seal (Includes Ref. Nos. 17)
6	7072960	1	WHEEL HUB, Rear
7	7072965	1	AXLE SUPPORT, CVT, Aluminum
8	7072975	1	AXLE, CVT
9	7090297	1	COTTER PIN, 1/8 x 1-1/2
10	7091299	4	NUT, Hex Nyloc, 3/8-16
11	7091778	1	WOODRUFF KEY, #808
12	7092052	4	CAPSCREW, Hex Head, 3/8-16 x 5-1/2 GR 5
13	7092038	1	NUT, Slotted Hex, 3/4-16
14	7092045	2	SNAP RING, 30mm
15	7092046	2	WASHER, 1-3/16 x 1-5/8 x .06 Flat
16	7013864	2	FITTING, Lube 3/16
17	7073008	2	SEAL, 1.181 ID 1.850 OD

Footnotes

The above parts group applies to the following Mfg. Nos.:

85668 - UV1621BV

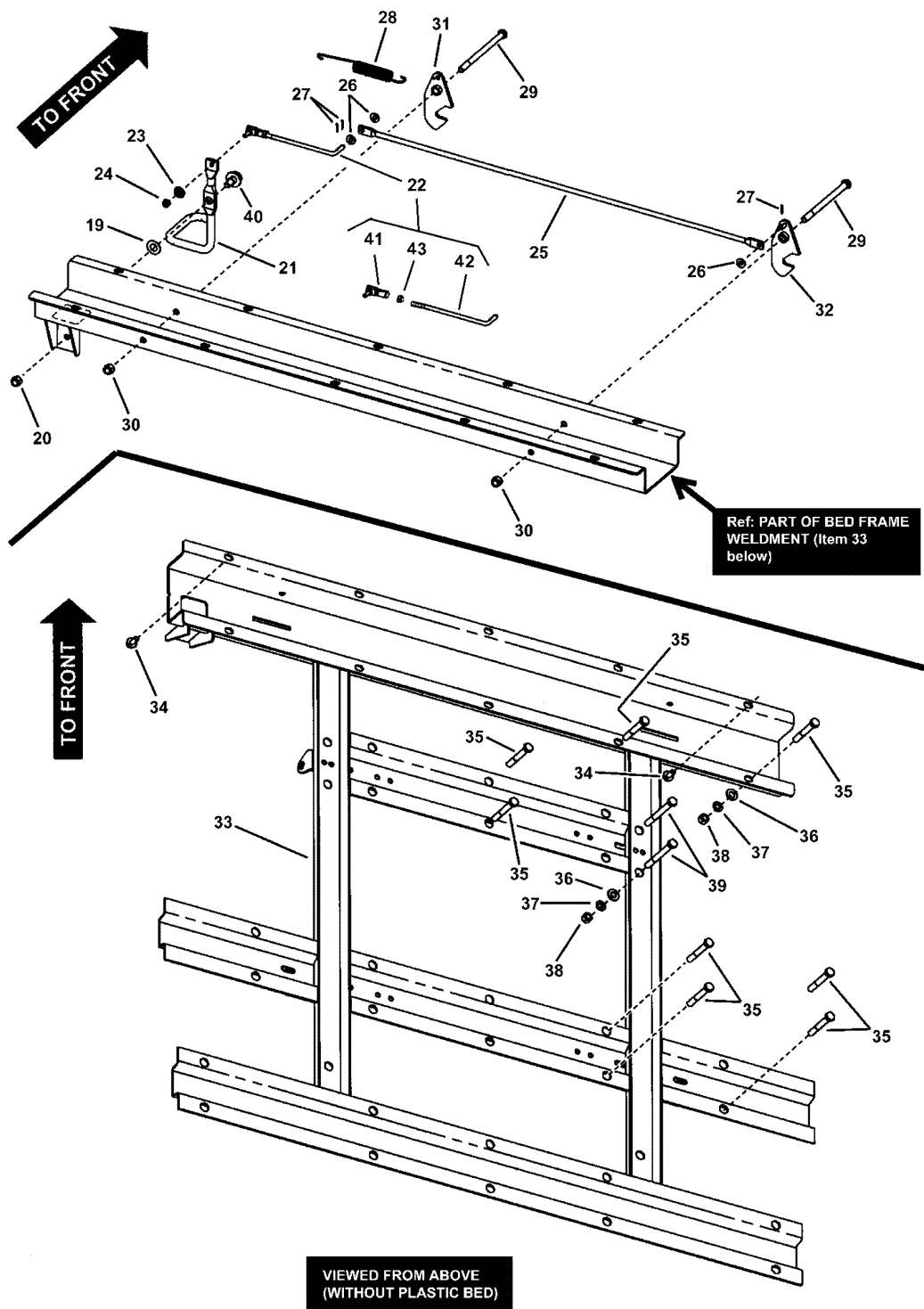
85903 - UVGT1621BV

85632 - UVG1621BV

Bed Assembly - Latch

NOTE: Unless noted otherwise, use the standard hardware torque specification chart.

179bed1



The above parts group applies to the following Mfg. Nos.:

- 85668 - UV1621BV
- 85903 - UVGT1621BV
- 85632 - UVG1621BV

Bed Assembly - Latch

REF NO	PART NO.	QTY.	DESCRIPTION
19	7091733	1	WASHER, .5 x 1.0 x .03 Flat
20	7091518	1	NUT, Hex Nyloc, 3/8-24
21	7028206	1	HANDLE, Bed Latch
22	7034564	1	ASSEMBLY, Rod-Link (Includes Ref. Nos. 41, 42 & 43)
23	7091314	1	WASHER, 1/4 Internal Tooth Lock
24	7090095	1	NUT, Hex, 1/4-28 GR 5 or B
25	7034437	1	ROD, Link
26	7091294	3	WASHER, .28 x .63 x .06 Flat
27	7091629	3	COTTER PIN, .06 x .50
28	7029360	1	SPRING, Extension
29	7092052	2	CAPSCREW, Hex Head, 3/8-16 x 5-1/2 GR 5
30	7091299	2	NUT, Hex Nyloc, 3/8-16
31	7028262	1	HOOKASSEMBLY, Bed (weldment)
32	7034428	1	HOOKASSEMBLY, Bed (weldment)
33	7022241	1	BED FRAME ASSEMBLY
34	7091811	5	BOLT, Hex Flange Lock, 5/16-18 x 5/8 GR 5
35	7091501	15	CAPSCREW, Hex Washer Head, 3/8-16 x 2-1/2 GR 5
36	7090122	19	WASHER, 3/8 SAE Flat
37	7090118	19	WASHER, 3/8 Split Lock
38	7091302	19	NUT, Hex, 3/8-16 GR 5 or B
39	7091044	4	CAPSCREW, Hex Head, 3/8-16 x 3-1/4, GR 5
40	7014981	1	BOLT, Hex Flange, 3/8-24 GR 8
41	7015753	1	BALL JOINT, 1/4-28
42	7034524	1	ROD-LINK (1/4-28 thread)
43	7090095	1	NUT, Hex, 1/4-28 GR 5 or B

Footnotes

The above parts group applies to the following Mfg. Nos.:

85668 - UV1621BV

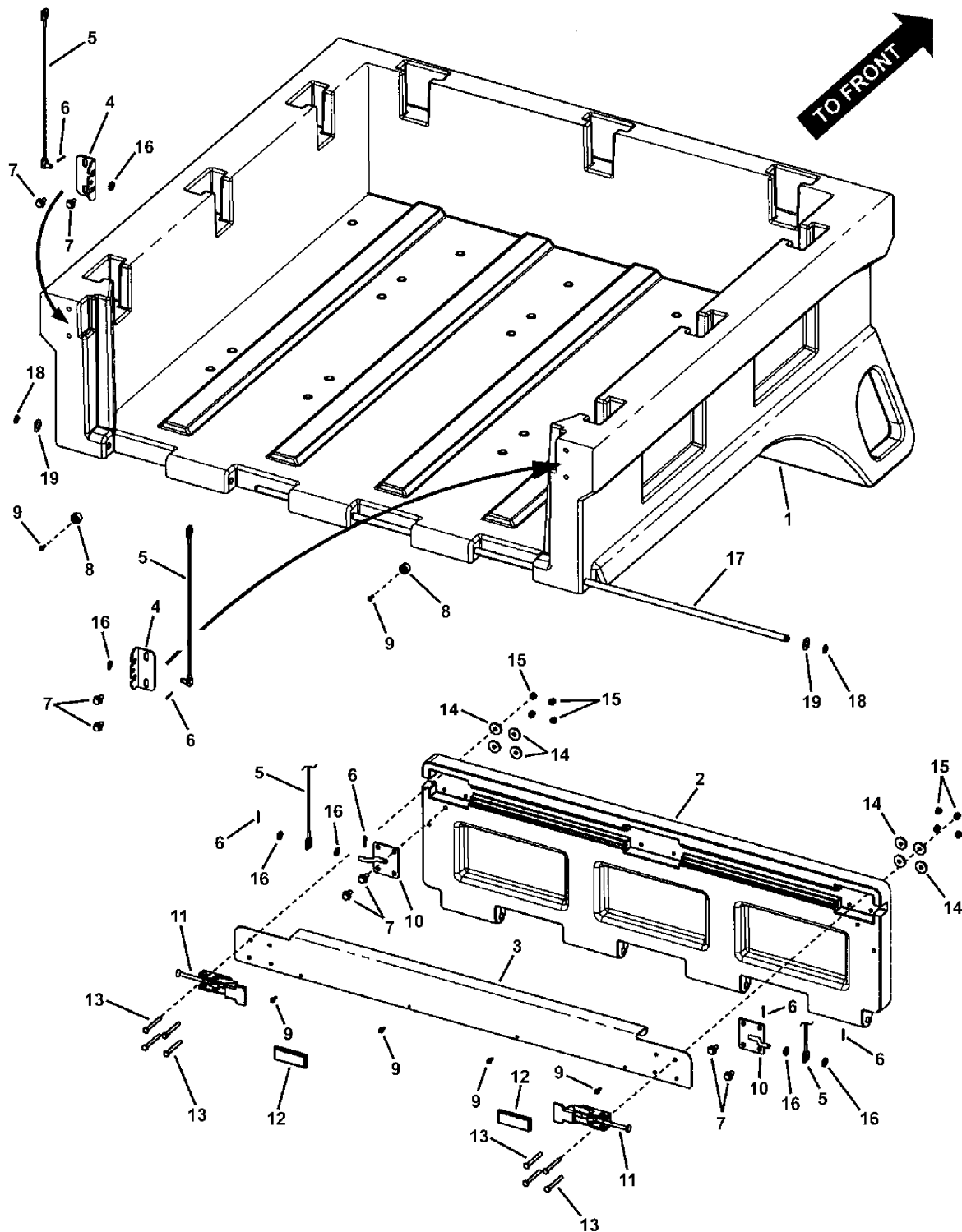
85903 - UVGT1621BV

85632 - UVG1621BV

Bed Assembly - Tail Gate

NOTE: Unless noted otherwise,
use the standard hardware torque
specification chart.

179bedt



The above parts group applies to the following Mfg. Nos.:

85668 - UV1621BV

85632 - UVG1621BV

85903 - UVGT1621BV

Bed Assembly - Tail Gate

REF NO	PART NO.	QTY.	DESCRIPTION
1	7075881	1	BED, Plastic
2	7075882	1	TAILGATE, Plastic
3	7043204	1	COVER, Tailgate
4	7043202	2	BRACKET, Latch LH
5	7026456	2	LANYARD, Tailgate
6	7090037	6	COTTER PIN, 3/32 x 3/4
7	7090606	8	BOLT, Hex Flange Lock, 5/16-18 x 5/8
8	7033795	2	BUMPER, Recess Style
9	7092106	6	SCREW, #10 x 5/8, HiLo Nail Point
10	7027803	2	BRACKET, Gate (weldment)
11	7034792	2	LATCH, Tailgate
12	7023682	2	REFLECTOR, Red
13	7091256	8	CAPSCREW, Hex Head, G1/4-20 x 2-1/4 Hex Head, GR 5
14	7091627	8	WASHER, .281 x 1.00 x .125 Flat
15	7091603	8	NUT, Hex Nyloc, 1/4-20
16	7091076	6	WASHER, .34 x .69 x .08 Flat
17	7026779	1	ROD, Tailgate
18	7010776	2	RETAINING RING, 1/2, Heavy Duty
19	7091733	2	WASHER, .5 x 1.0 x .03 Flat

Footnotes

The above parts group applies to the following Mfg. Nos.:

85668 - UV1621BV

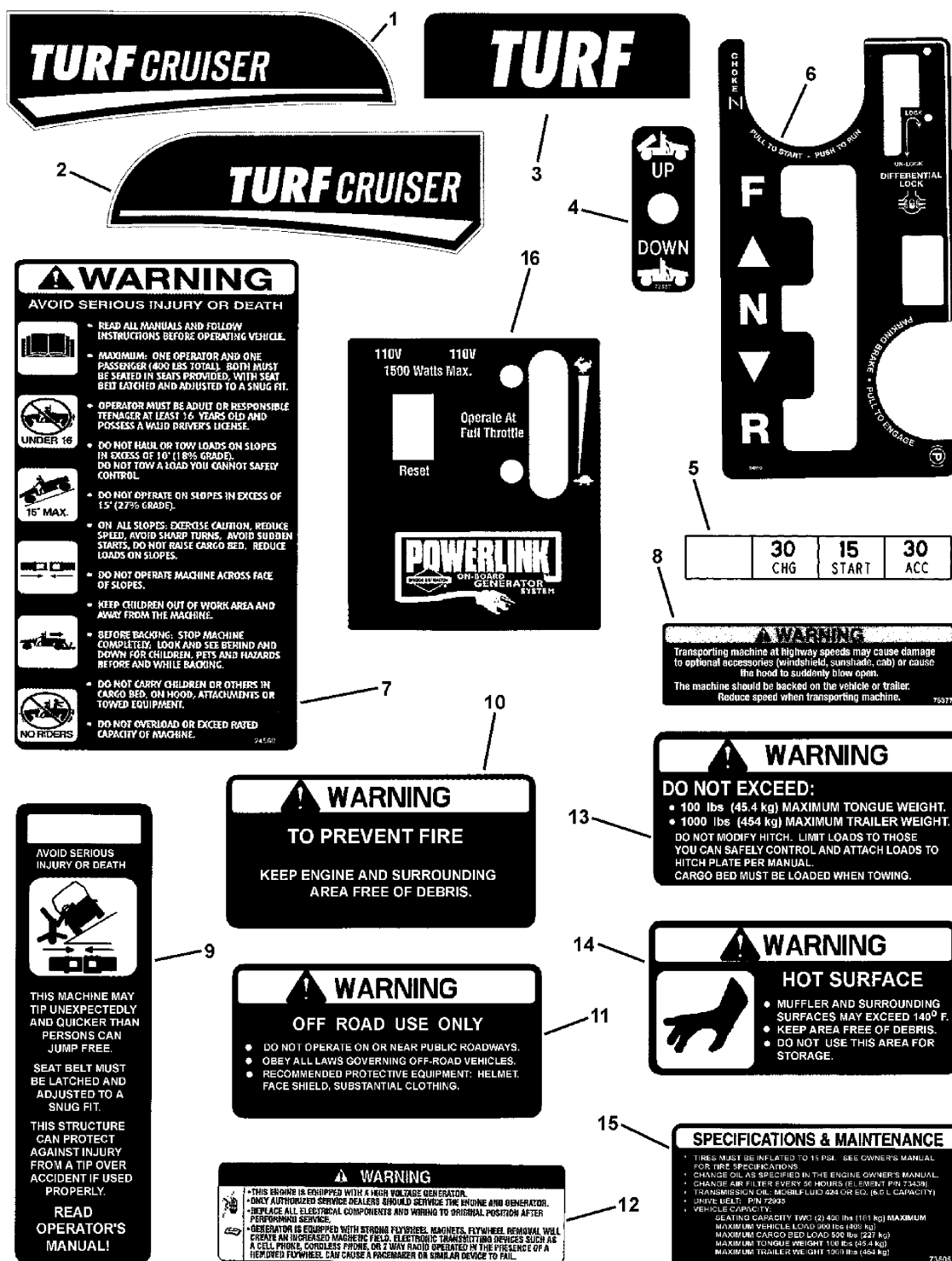
85632 - UVG1621BV

85903 - UVGT1621BV

Decal Group

NOTE: Unless noted otherwise, use the standard hardware torque specification chart.

179dclg



The above parts group applies to the following Mfg. Nos.:

- 85903 - UVGT1621BV
- 85632 - UVG1621BV
- 85668 - UV1621BV

Decal Group

REF NO	PART NO.	QTY.	DESCRIPTION
1	7028043	1	DECAL, Turf Cruiser, LH
2	7028044	1	DECAL, Turf Cruiser, RH
3	7029364	1	DECAL, Turf, Front
4	7072687	1	DECAL, Bed Lift
5	7073675	1	DECAL, Fuse Box, Utility Vehicle
6	7034810	1	DECAL, Console
7	7024560	1	DECAL, Warning Avoid Injury or Death
8	7075377	1	DECAL, Transport Warning
9	7073473	1	DECAL, Danger ROPS
10	7073504	1	DECAL, Warning, To Prevent Fire
11	7073476	1	DECAL, Warning, Off Road Use Only
12	7029985	1	DECAL, Warning, B&S Powerlink, Used on Model 85632 & 85903
13	7073506	1	DECAL, Warning, Hitch Load
14	7073477	1	DECAL, Warning, Hot Surface
15	7073505	1	DECAL, Specs & Maintenance
16	7022228	1	DECAL, Powerlink, Used on Model 85632
17	*	1	DECAL, Patent Numbers

Footnotes

* Not a service part.

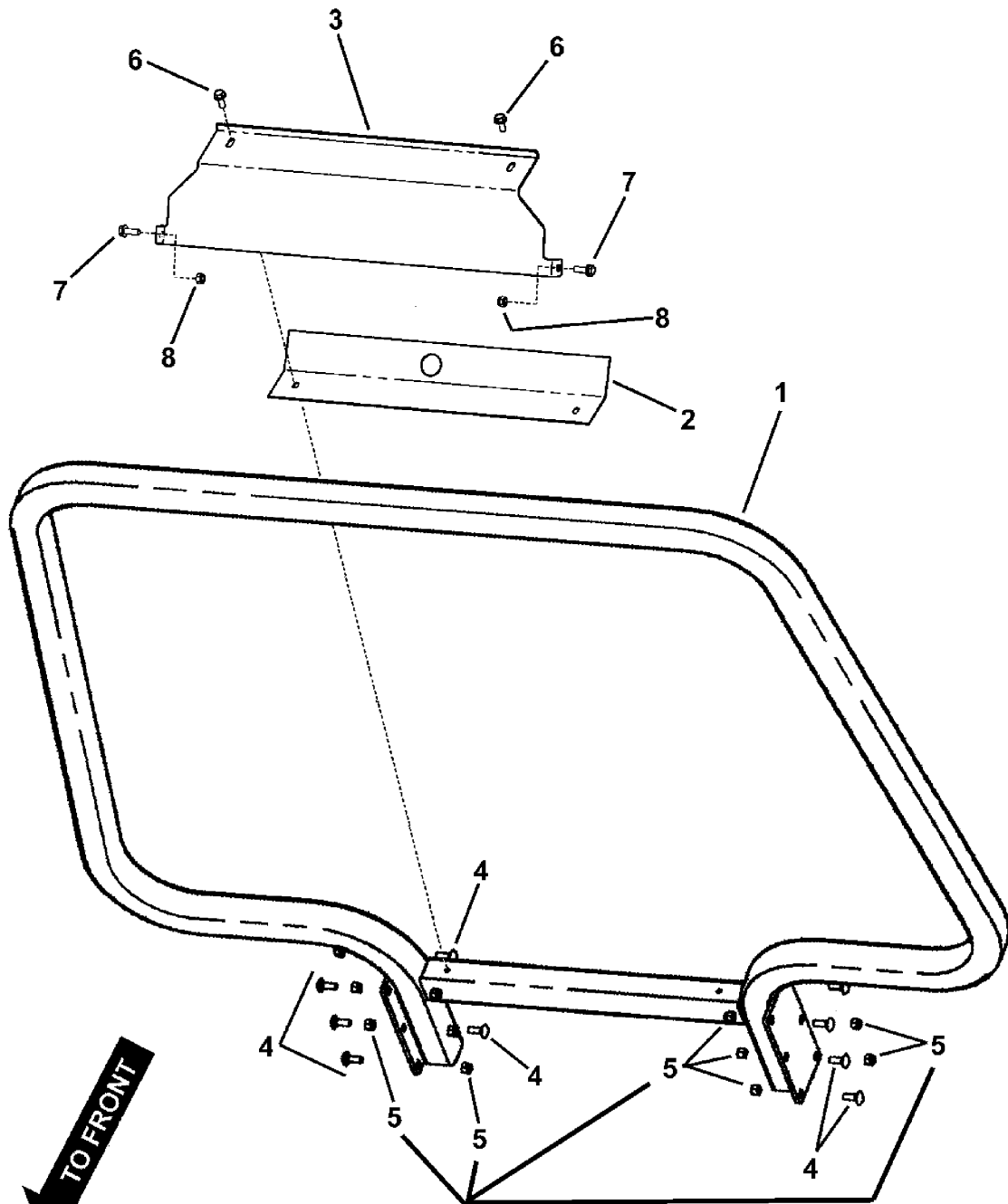
The above parts group applies to the following Mfg. Nos.:

85903 - UVGT1621BV

85632 - UVG1621BV

85668 - UV1621BV

NOTE: Unless noted otherwise,
use the standard hardware torque
specification chart.



**Torque Nuts
to 30 - 35 ft/lbs
or (40.8 - 47.6 Nm)**

The above parts group applies to the following Mfg. Nos.:

- 85668 - UV1621BV
- 85903 - UVGT1621BV
- 85632 - UVG1621BV

R.O.P.S. Group

REF NO	PART NO.	QTY.	DESCRIPTION
1	7058752	1	ROPS ASSEMBLY
2	7044936	1	HEAT SHIELD, Cab (UV-2)
3	7073024	1	SHIELD, Heat/Debris, Used on Turf Cruiser Models 85632 & 85668
3	7063349	1	SHIELD, Heat/Debris, Used on Trail Cruiser Model 85903
4	7091640	12	CARRIAGE BOLT, 3/8-16 x 1 GR 5
5	7091299	12	NUT, Hex Nyloc, 3/8-16
6	7091541	2	SCREW, Hex Washer Self-Tap, 5/16-18 x 3/4
7	7091905	2	BOLT, Hex Flange Lock, 5/16-18 x 7/8
8	7091298	2	NUT, Hex Nyloc, 5/16-18

Footnotes

The above parts group applies to the following Mfg. Nos.:

85668 - UV1621BV

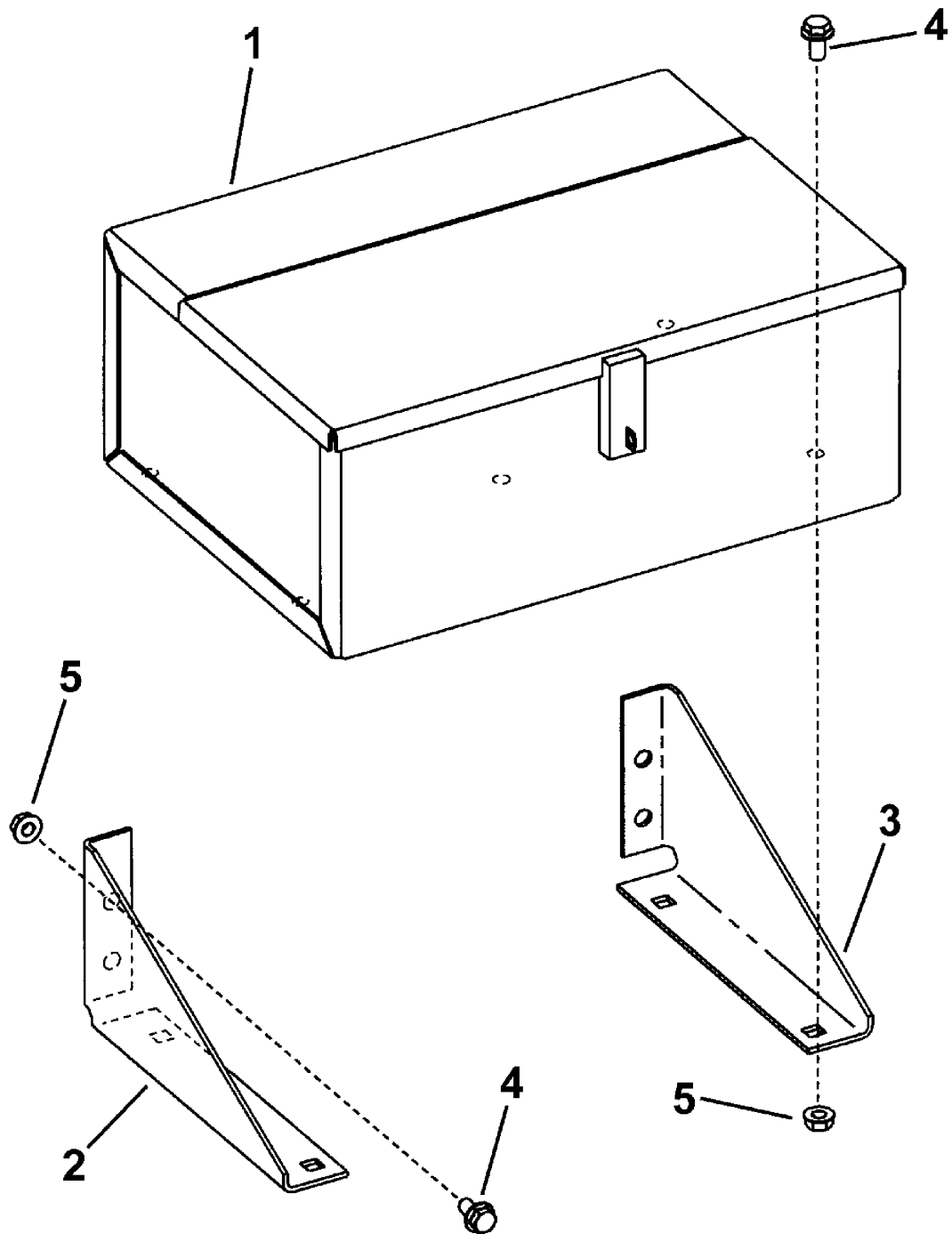
85903 - UVGT1621BV

85632 - UVG1621BV

Toolbox Group

NOTE: Unless noted otherwise,
use the standard hardware torque
specification chart.

179tbxg



The above parts group applies to the following Mfg. Nos.:

85668 - UV1621BV
85632 - UVG1621BV
85903 - UVGT1621BV

Toolbox Group

REF NO	PART NO.	QTY.	DESCRIPTION
1	7034880	1	TOOLBOX, Turf/Trail Cruiser
2	7029368	1	BRACKET, Toolbox, LH
3	7029370	1	BRACKET, Toolbox
4	7091811	8	BOLT, Hex Flange Lock, 5/16-18 x 5/8 GR 5
5	7091601	8	NUT, Hex Flange Lock, 5/16-18 GR 5

Footnotes

The above parts group applies to the following Mfg. Nos.:

85668 - UV1621BV

85632 - UVG1621BV

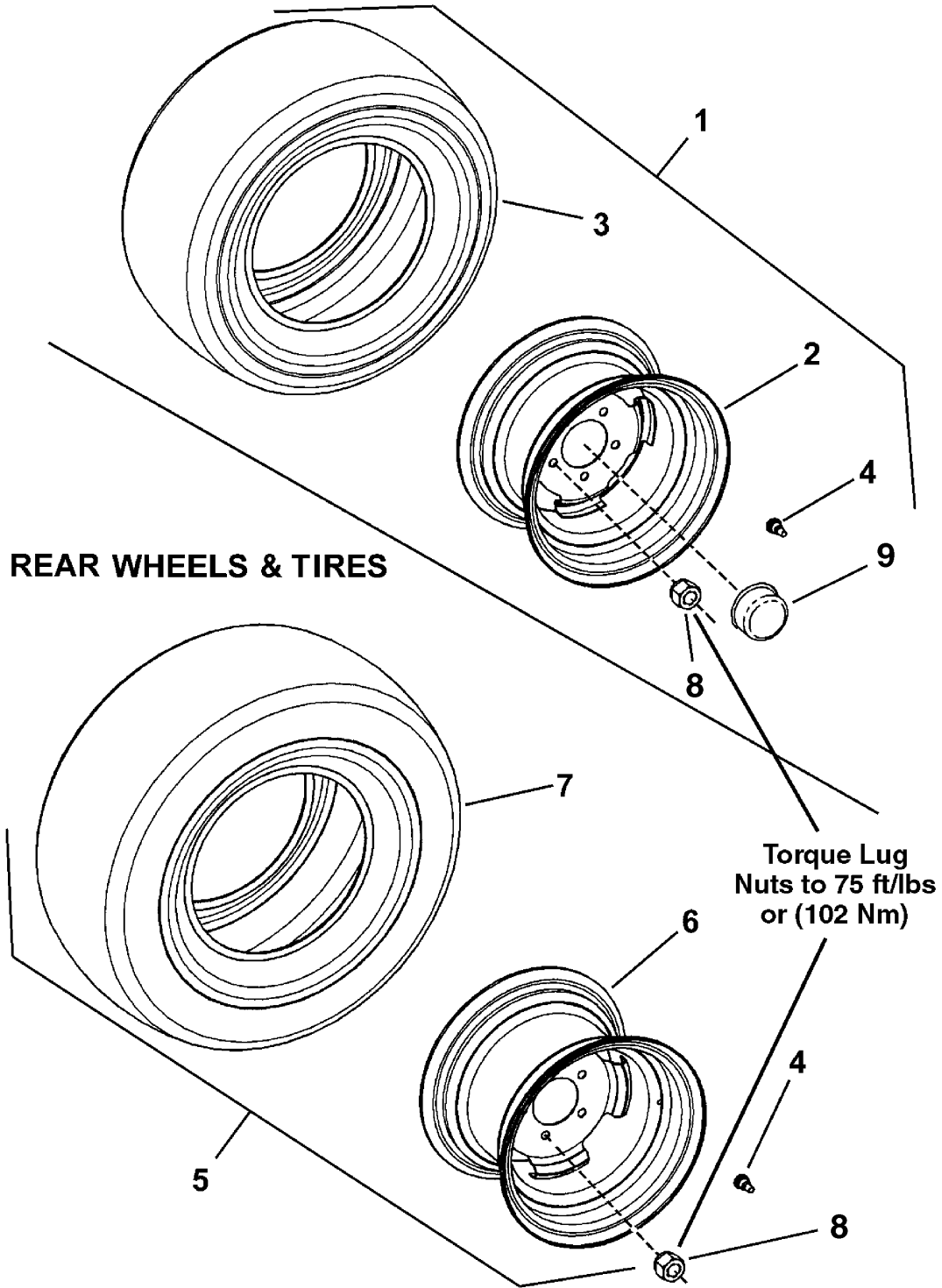
85903 - UVGT1621BV

Wheel & Tire Group - Turf Tires

179wgtt

NOTE: Unless noted otherwise,
use the standard hardware torque
specification chart.

FRONT WHEELS & TIRES



REAR WHEELS & TIRES

Torque Lug
Nuts to 75 ft/lbs
or (102 Nm)

The above parts group applies to the following Mfg. Nos.:

85632 - UVG1621BV
85903 - UVGT1621BV
85668 - UV1621BV

Wheel & Tire Group - Turf Tires

REF NO	PART NO.	QTY.	DESCRIPTION
1	7063254	2	ASSEMBLY, Front Wheel, Turf Tire (Includes Ref. Nos. 2, 3 & 4)
2	7073568	1	RIM, 12 x 7.00 w/ 1.06 Inset
3	7073005	1	TIRE, Titan Multi Trac C/S, 23 x 8.50-12
4	7012234	1	AIR VALVE (Snap-In)
5	7063257	2	ASSEMBLY, Rear Wheel, Turf Tire (Includes Ref. Nos. 4, 6 & 7)
6	7073569	1	RIM, 12 x 8.50 w/ .95 Offset
7	7072888	1	TIRE, Titan Multi Trac C/S, 26 x 12.00-12, 4P
8	7027192	12	LUG NUT, 1/2-20 Tapered Seat
9	7073120	2	DUST CAP

Footnotes

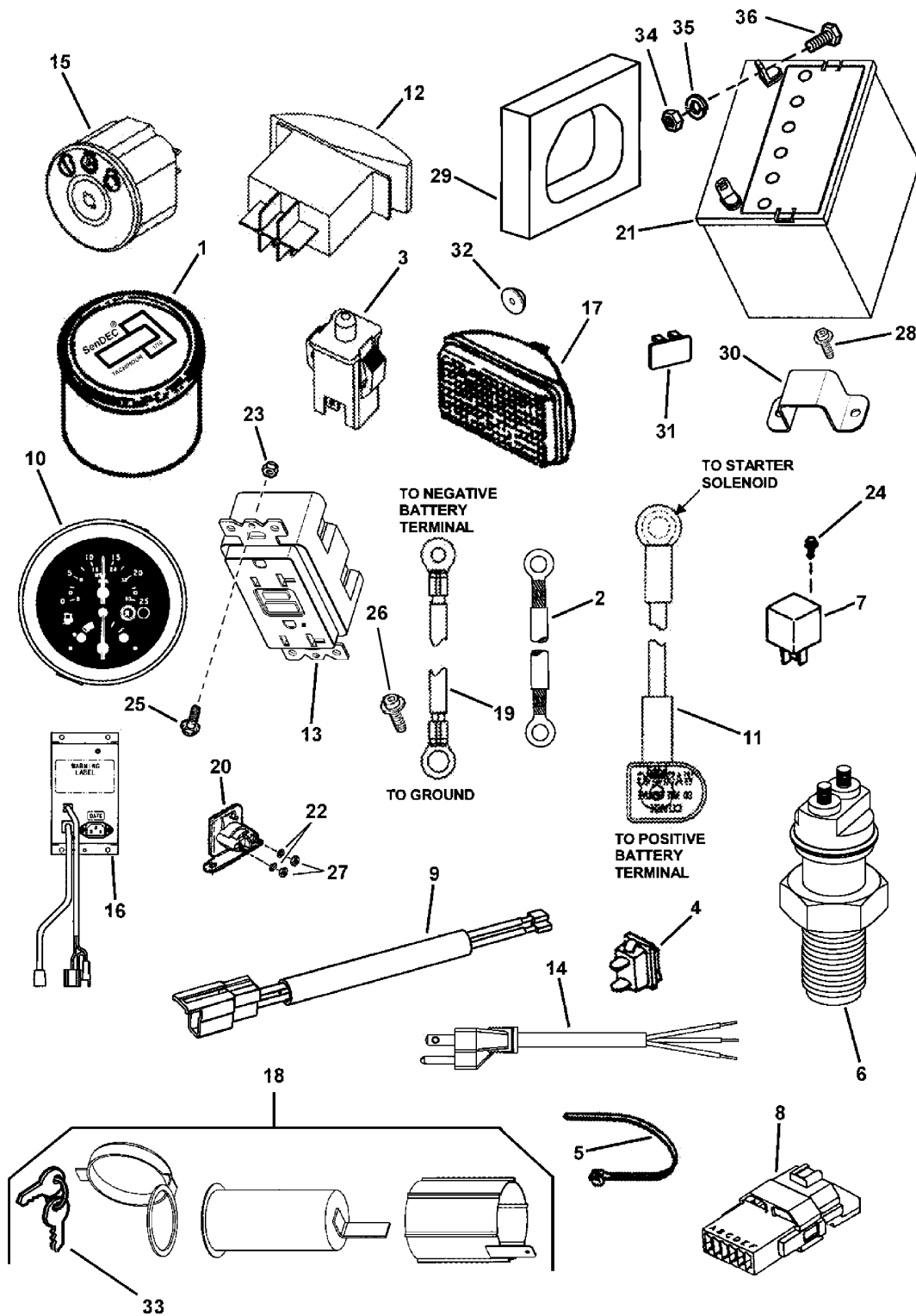
The above parts group applies to the following Mfg. Nos.:

85632 - UVG1621BV
85903 - UVGT1621BV
85668 - UV1621BV

Electrical Group

NOTE: Unless noted otherwise, use the standard hardware torque specification chart.

179elec



The above parts group applies to the following Mfg. Nos.:

85668 - UV1621BV

85632 - UVG1621BV

85903 - UVGT1621BV

Electrical Group

REF NO	PART NO.	QTY.	DESCRIPTION
1	7011217	1	HOUR METER, Inductive
1	7044636	1	HOUR/Tachometer
2	7019326	1	WIRE, Positive 17
3	7022231	1	SWITCH, DP NO/NO, Snap-In
4	7023187	1	SWITCH, Rocker SPST
5	7024649	9	WIRE TIE, 11 Inch Std Black Nylon
6	7026570	1	SENSOR, Speed
7	7028570	2	RELAY, OPC E.C.
8	7028583	1	INTERLOCK, UV2, B&S
9	7029163	1	WIRING HARNESS, UV2 Generator, Used on Model 85632
10	7033898	1	GAGE PACKAGE, Speed/Gas
11	7035607	1	CABLE, Positive Battery
12	7035659	1	SWITCH, Lights
13	7041595	1	OUTLET, Utility Vehicle, Used on Model 85632
14	7044672	1	ELECTRIC CORD with Plug, Used on Model 85632
15	7072684	1	SWITCH, Ignition
16	7072720	1	INVERTER BOX, 120 VAC, Used on Model 85632
17	7072830	2	HEADLIGHT
18	7073090	1	OUTLET, 12 Volt DC Power
19	7073962	1	CABLE, Battery Ground
20	7075671	1	SOLENOID, RER, Super-Trombetta
21	7075911	1	BATTERY, 11 Plate 375CCA, Wet
22	7090053	2	WASHER, 1/4 Internal Tooth Lock
23	7090376	4	NUT, Hex Nyloc, #10-32
24	7091075	2	SCREW, Hex Washer Flange Self-Tap, #10-24 x 5/8
25	7091240	4	SCREW, Hex Washer Head Machine, #10-32 x 5/8
26	7091286	2	SCREW, Hex Washer Self-Tap, #10-24 x 1/2 SEMS
27	7091576	2	NUT, Hex, 1/4-20
28	7092013	2	SCREW, Thread Rolling Tapping, Used on Model 85632
29	7092014	1	GASKET, Drop Cord/Inverter, Used on Model 85632
30	7092020	1	CLAMP, Drop Cord Tie Down, Used on Model 85632
31	1709188	1	PLUG, Switch
32	7091199	6	NUT, Nylon Non-Threaded, 1/4
33	7073406	1	KEYS, Set of 2, G.C. Ignition
34	7090372	2	NUT, Hex Center Lock, 1/4-20 GR 5 or B
35	7091294	2	WASHER, .28 x .63 x .06 Flat
36	7090072	2	CAPSCREW, Hex Head, 1/4-20 x 5/8 GR 5

Footnotes

The above parts group applies to the following Mfg. Nos.:

85668 - UV1621BV

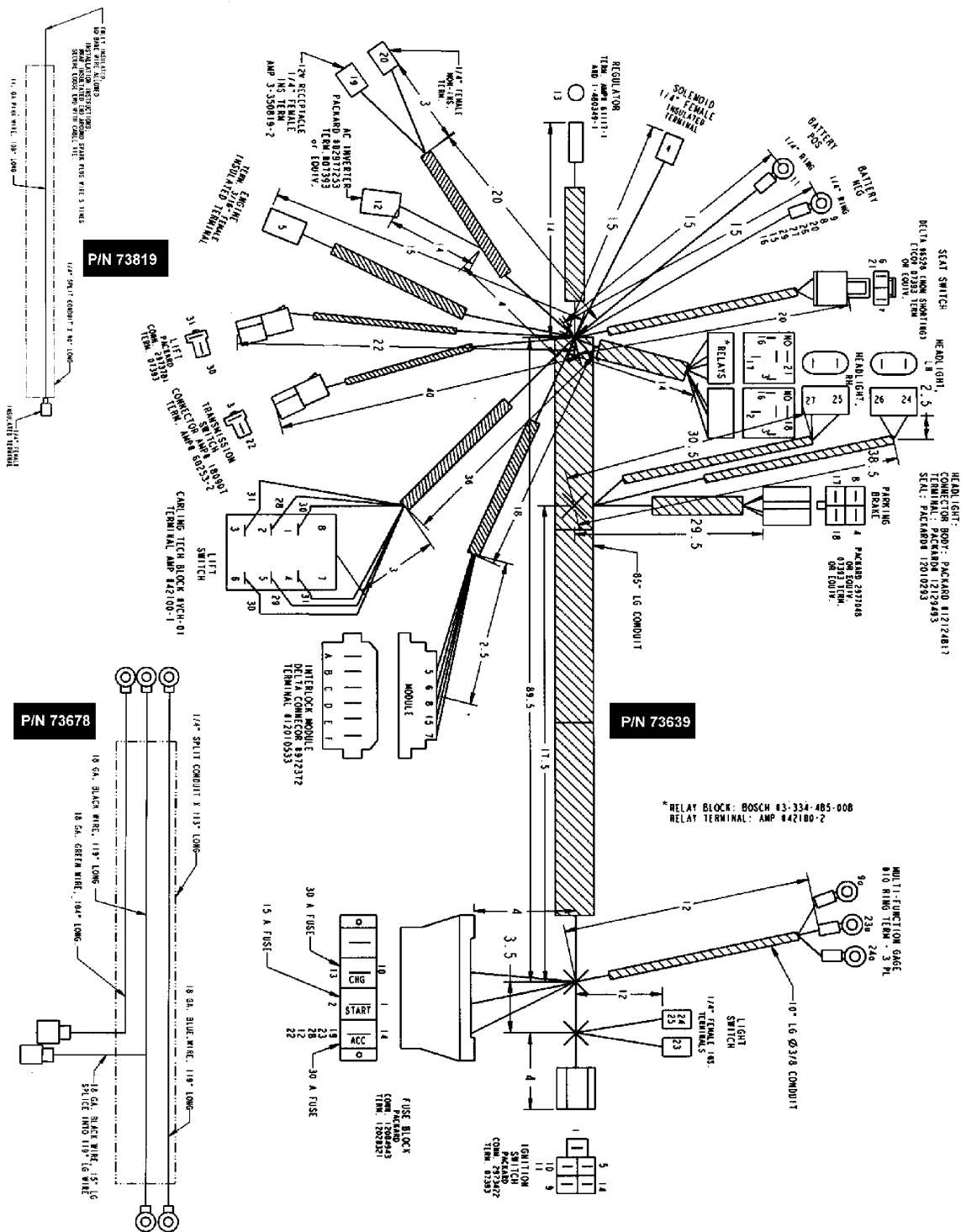
85632 - UVG1621BV

85903 - UVGT1621BV

Wiring Harness

179harn

NOTE: Unless noted otherwise,
use the standard hardware torque
specification chart.



The above parts group applies to the following Mfg. Nos.:

- 85632 - UVG1621BV
- 85903 - UVGT1621BV
- 85668 - UV1621BV

Wiring Harness

REF NO	PART NO.	QTY.	DESCRIPTION
1	7073639	1	WIRING HARNESS, Main
2	7073678	1	WIRING HARNESS, Speed/Fuel
3	7073819	1	WIRING HARNESS, Tachometer

Footnotes

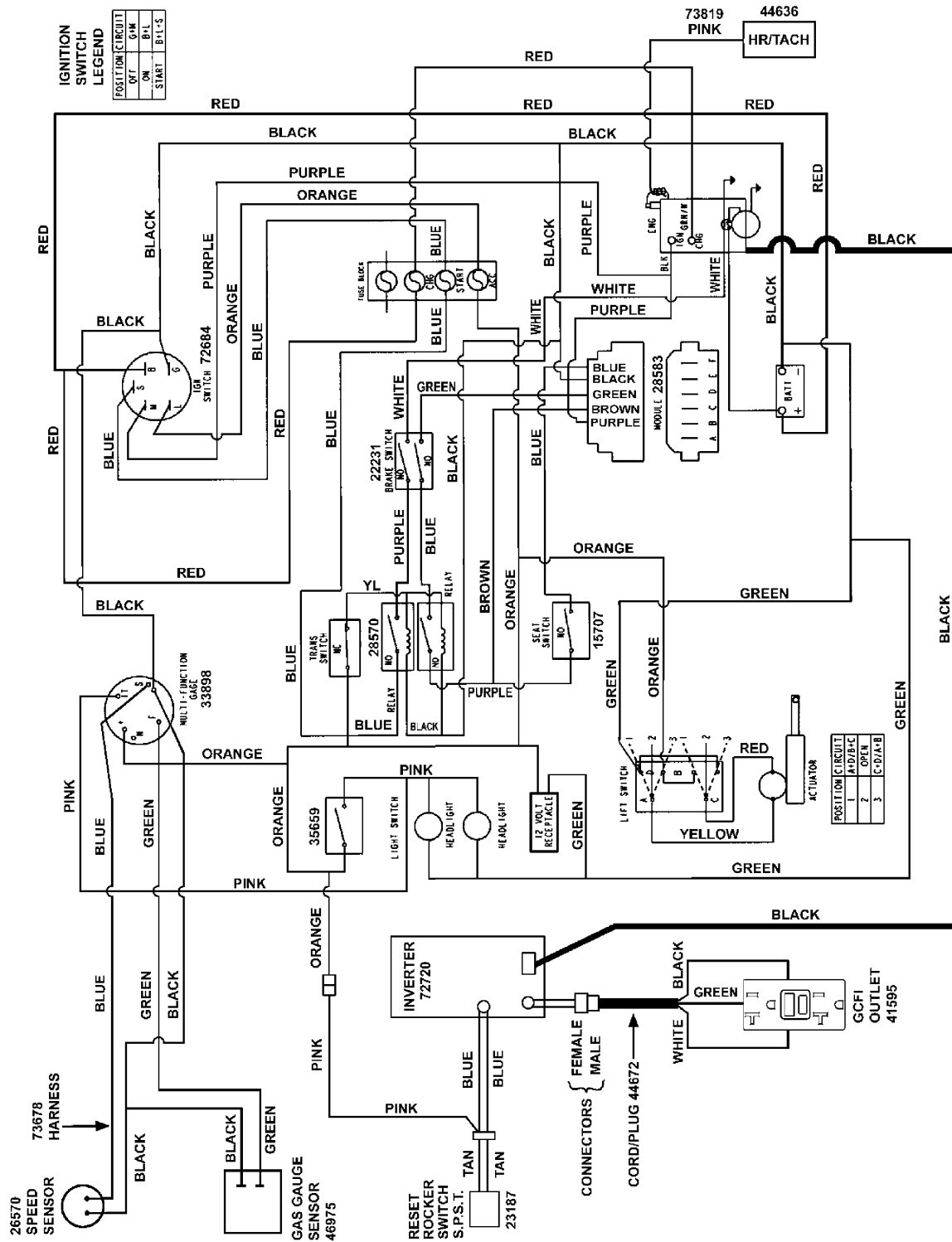
The above parts group applies to the following Mfg. Nos.:

85632 - UVG1621BV
85903 - UVGT1621BV
85668 - UV1621BV

Wiring Schematic

179sche

NOTE: Unless noted otherwise, use the standard hardware torque specification chart.



The above parts group applies to the following Mfg. Nos.:

- 85903 - UVGT1621BV
- 85632 - UVG1621BV
- 85668 - UV1621BV

Wiring Schematic

REF NO	PART NO.	QTY.	DESCRIPTION
--	--	1	Wiring Schematic includes harnesses 73639, 73678 & 73819

Footnotes

The above parts group applies to the following Mfg. Nos.:

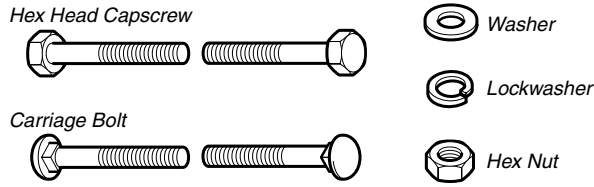
85903 - UVGT1621BV

85632 - UVG1621BV

85668 - UV1621BV

Hardware Identification & Torque Specifications

Common Hardware Types

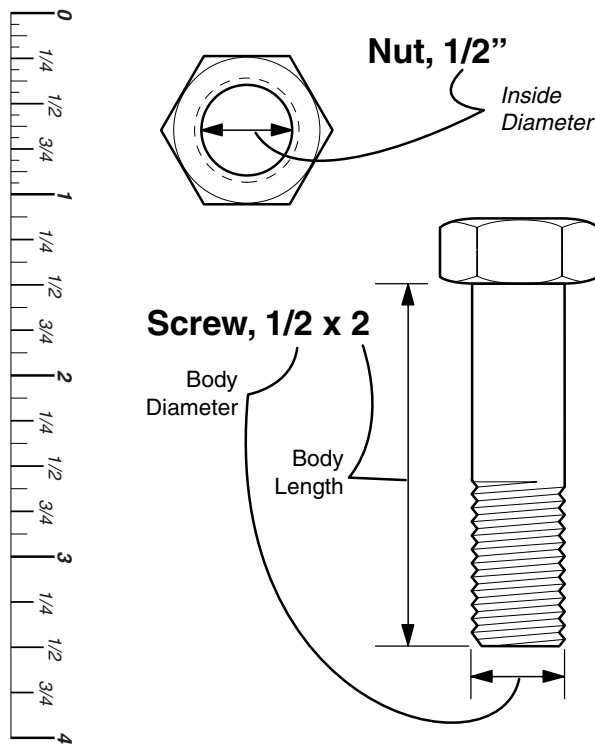


Standard Hardware Sizing

When a washer or nut is identified as 1/2", this is the *Nominal size*, meaning the *inside diameter* is 1/2 inch; if a second number is present it represents the *threads per inch*

When bolt or capscrew is identified as 1/2 - 16 x 2", this means the *Nominal size*, or *body diameter* is 1/2 inch; the second number represents the *threads per inch* (16 in this example, and the final number is the *body length* of the bolt or screw (in this example 2 inches long).

The guides and ruler furnished below are designed to help you select the appropriate hardware and tools.



Torque Specification Chart

FOR STANDARD MACHINE HARDWARE (Tolerance ± 20%)

Hardware Grade	No Marks SAE Grade 2		SAE Grade 5		SAE Grade 8	
	in/lbs ft/lbs	Nm.	in/lbs ft/lbs	Nm.	in/lbs ft/lbs	Nm.
8-32	19	2.1	30	3.4	41	4.6
8-36	20	2.3	31	3.5	43	4.9
10-24	27	3.1	43	4.9	60	6.8
10-32	31	3.5	49	5.5	68	7.7
1/4-20	66	7.6	8	10.9	12	16.3
1/4-28	76	8.6	10	13.6	14	19.0
5/16-18	11	15.0	17	23.1	25	34.0
5/16-24	12	16.3	19	25.8	27	34.0
3/8-16	20	27.2	30	40.8	45	61.2
3/8-24	23	31.3	35	47.6	50	68.0
7/16-14	30	40.8	50	68.0	70	95.2
7/16-20	35	47.6	55	74.8	80	108.8
1/2-13	50	68.0	75	102.0	110	149.6
1/2-20	55	74.8	90	122.4	120	163.2
9/16-12	65	88.4	110	149.6	150	204.0
9/16-18	75	102.0	120	163.2	170	231.2
5/8-11	90	122.4	150	204.0	220	299.2
5/8-18	100	136	180	244.8	240	326.4
3/4-10	160	217.6	260	353.6	386	525.0
3/4-16	180	244.8	300	408.0	420	571.2
7/8-9	140	190.4	400	544.0	600	816.0
7/8-14	155	210.8	440	598.4	660	897.6
1-8	220	299.2	580	788.8	900	1,244.0
1-12	240	326.4	640	870.4	1,000	1,360.0

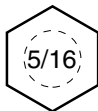
NOTES

- These torque values are to be used for all hardware excluding: locknuts, self-tapping screws, thread forming screws, sheet metal screws and socket head setscrews.
- Recommended seating torque values for locknuts:
 - for prevailing torque locknuts - use 65% of grade 5 torques.
 - for flange whizlock nuts and screws - use 135% of grade 5 torques.
- Unless otherwise noted on assembly drawings, all torque values must meet this specification.

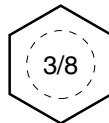
Wrench & Fastener Size Guide



1/4" Bolt or Nut
Wrench—7/16"



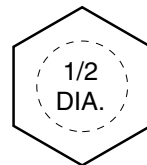
5/16" Bolt or Nut
Wrench—1/2"



3/8" Bolt or Nut
Wrench—9/16"



7/16" Bolt or Nut
Wrench (Bolt)—5/8"
Wrench (Nut)—11/16"



1/2" Bolt or Nut
Wrench—3/4"

Simplicity

MANUFACTURING, INC.
500 N. Spring Street / PO Box 997
Port Washington, WI 53074-0997 USA

www.simplicitymfg.com

© Copyright 2004 Simplicity Manufacturing, Inc.
All Rights Reserved. Printed In USA.

