

Simplicity

DUAL LIFT LEVER MFG. NO. 791

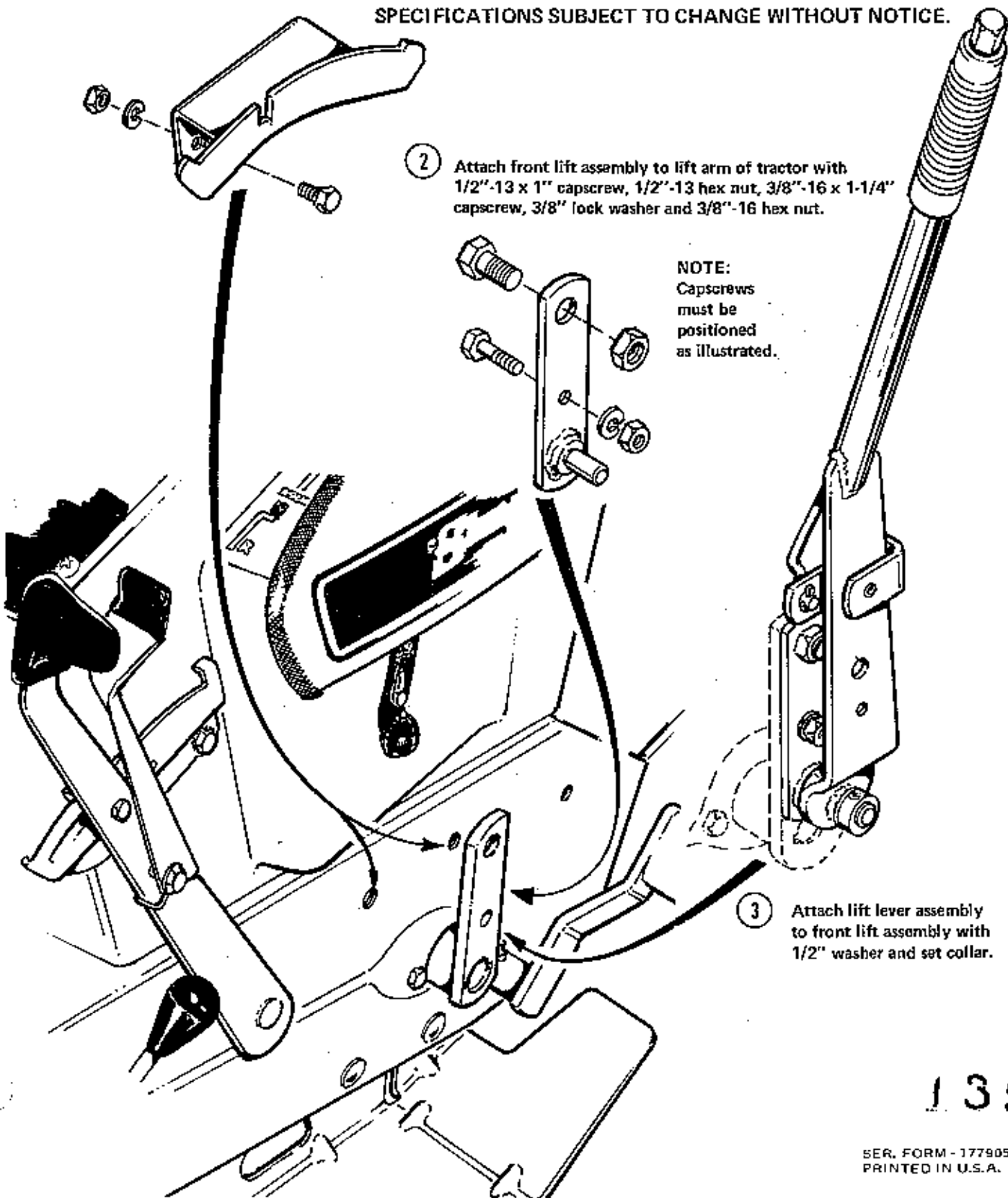
- ① Attach quadrant assembly to tractor with 3/8"-16 x 3/4" capscrew, 3/8" lock washer and 3/8"-16 hex nut.

SPECIFICATIONS SUBJECT TO CHANGE WITHOUT NOTICE.

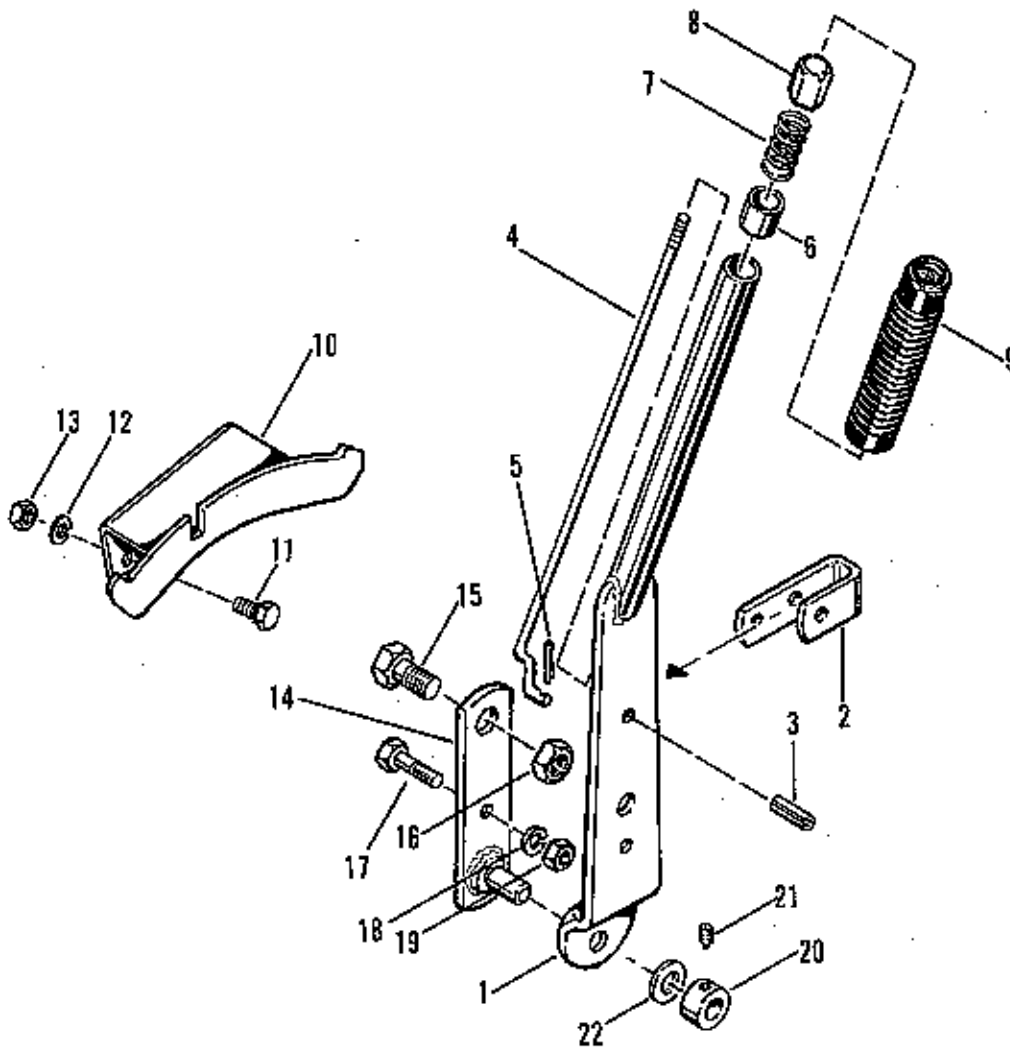
- ② Attach front lift assembly to lift arm of tractor with 1/2"-13 x 1" capscrew, 1/2"-13 hex nut, 3/8"-16 x 1-1/4" capscrew, 3/8" lock washer and 3/8"-16 hex nut.

NOTE:
Capscrews
must be
positioned
as illustrated.

- ③ Attach lift lever assembly to front lift assembly with 1/2" washer and set collar.



1356



Ref. No.	Part No.	Qty. Req.	Description
1	157160	1	Lift Lever Assembly
2	157166	1	Lift Lever Latch
3	723007	1	Roll Pin, 3/8"-1"
4	157167	1	Latch Rod
5	722001	1	Cotter Pin
6	154226	1	Spacer
7	152006	1	Spring
8	154227	1	Thumb Button
9	156209	1	Handle Grip
10	174718	1	Quadrant Assembly
11	705004	2	Hex Capscrews, 3/8"-16 x 3/4" lg.

Ref. No.	Part No.	Qty. Req.	Description
12	720002	2	Lock Washer, 3/8"
13	717003	2	Hex Nut, Full, 3/8"-16
14	174711	1	Front Lift Lever Assy.
15	715138	1	Hex Capscrew, 1/2"-13 x 1"
16	717521	1	Center Lock Jam Nut, 1/2"-13
17	705016	1	Hex Capscrew, 3/8"-16 x 1-1/4" lg.
18	720002	1	Lock Washer, 3/8"
19	717003	1	Hex Nut, 3/8"-16
20	8021010	1	Set Collar
21	713502	1	Set Screw, 5/16"-18 x 1/4" lg.
22	719004	1	Plain Washer, 1/2"

**DUAL LIFT LEVER KIT MFG. NO. 791
TO FIT EARLY MODEL TRACTORS**

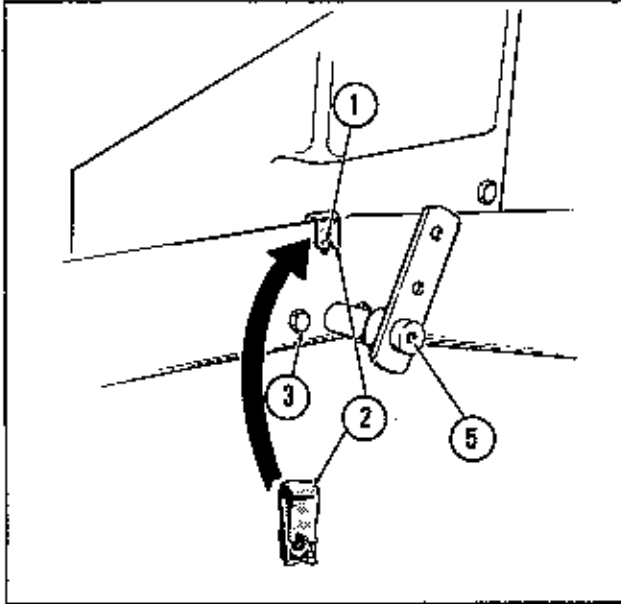


Figure 1

1. On the right hand side of the tractor frame, locate a mounting hole, No. 1-Fig. 1, above the lift lever shaft and at the upper edge of the tractor frame. Attach the nut retainer, No. 2-Fig. 1, at this point, with the nut on the inner surface of the frame as shown.

2. Remove the 2 hex cap screws from each side, No. 3-Fig. 1, of the lift lever shaft and mount the quadrant assembly, No. 4-Fig. 2, to the side of the tractor frame as shown in Figure 2, using the 2 hex cap screws previously removed. Insert a hex cap screw, 5/16-18 x 3/4" lg. SAE Grade 5, and 5/16 lock washer into the upper mounting hole of quadrant and tighten into the nut retainer installed during step 1.

NOTE: FOR 1967 MODEL TRACTORS & EARLIER

3. Place the spacer, "F" -page 2, within the hole in the end of the lift lever assembly, "E" -page 2, and position a washer, "G" -page 2, on each side of the spacer. Insert a hex cap screw 7/16-14 x 1 1/2" lg., "J" -page 2, with lock washer, through the washers and spacer and attach the lift lever assembly to the end of the lift lever shaft. Refer to No. 5-Figs. 1 & 2. Tighten the hex cap screw securely.

NOTE: FOR 1968 MODEL TRACTORS & LATER

4. Place the lift lever assembly on the lift lever shaft and secure with the 5/16-18 x 5/8" lg. cap screw, 5/16 lockwasher and 5/16 plain washer.

5. For use with "Front-Mounted" equipment, attach the front lift rod, "X" -page 2, to the mounting hole in lift lever assembly and secure with spring clip.

6. For use with "Center-Mounted" equipment, use the lift lever, "T" -page 2, for attaching equipment to lift lever assembly. Assemble the lift lever to the inside flat face of the lift lever assembly with a 3/8-16 x 7/8" lg. hex cap screw, 3/8" lockwasher, and 3/8-16 hex nut as shown on page 2.

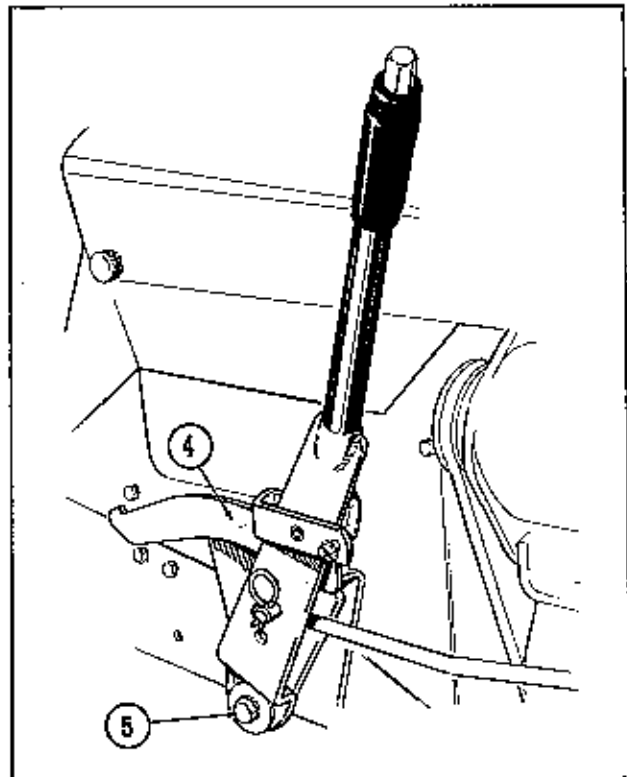
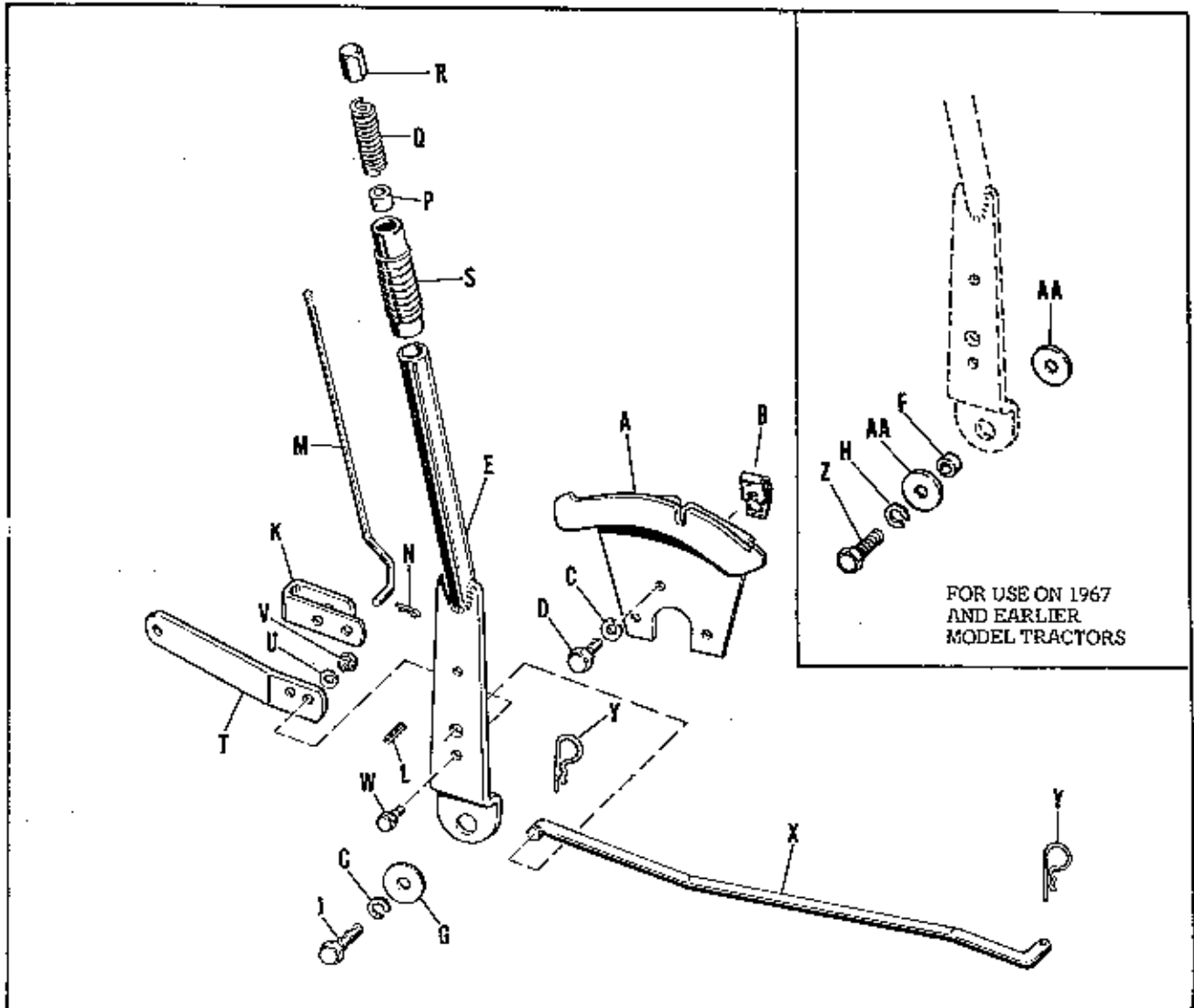


Figure 2



Ref. Letter	Part No.	Description
A	157163	Quadrant Assembly, R.H.
B	718030	Nut Retainer
C	720001	Lock Washer, 5/16"
D	715048	Capscrew, Hex., 5/16" - 18 x 3/8" lg., SAE Grade 5
E	157160	Lift Lever Assembly, R.H.
F	157168	Spacer
G	719002	Washer, Plain, 5/16"
H	720006	Lock Washer, 7/16"
J	705012	Hex Capscrew, 5/16" - 18 x 5/8" lg.
K	157166	Lift Lever Latch
L	723007	Roll Pin, 3/8" x 1"
M	157167	Latch Rod, R.H.
N	722001	Cotter Pin, 3/32" x 3/4" lg.
P	154226	Spacer
Q	152006	Spring
R	154227	Thumb Button
S	156209	Handle Grip
T	157170	Lift Lever
U	720002	Lock Washer, 3/8"
V	717003	Hex Nut, Full, 3/8" - 16
W	705031	Hex Capscrew, 3/8" - 16 x 7/8" lg.
X	107046	Front Lift Rod
Y	8161045	Spring Clip
Z	705039	Hex Capscrew, 7/16" - 14 x 1 1/4" lg.
AA	157169	Washer, Plain, 7/16"