

Simplicity

PARTS MANUAL

MODEL 6000

ATTACHMENTS & ACCESSORIES

36" SNOW THROWER
MFG. NO. 1690169
30" ROTARY TILLER
MFG. NO. 1690194
42" SNOW PLOW & DOZER BLADE
MFG. NO. 1690085
42" SNOW PLOW & DOZER BLADE HITCH
MFG. NO. 1690188
VACUUM COLLECTOR
MFG. NO. 1690226
36" VACUUM COLLECTOR ADAPTOR
MFG. NO. 1690228
42" VACUUM COLLECTOR ADAPTOR
MFG. NO. 1690227
VACUUM COLLECTOR CART COVER
MFG. NO. 1600395

ROVING NOZZLE
MFG. NO. 1690031
REAR GRASS CATCHER
MFG. NO. 1690229
HOUR METER
MFG. NO. 1690197
DUMP CART
MFG. NO. 1600236
LIFT LEVER
MFG. NO. 1690195
HUB CAPS
MFG. NO. 1600027
HUB CAPS
MFG. NO. 1690181
WINTERIZING KIT
MFG. NO. 1690151

Attention Dealers:

This manual is one of the new style parts manuals which Simplicity is issuing. We trust you will find that this manual contains more information than previously offered in parts manuals, including important facts which will help you with repair work and parts ordering.

The new loose-leaf format allows for easier updating of specific sections should it be necessary and, in general, makes the manual easier to work with in day to day use.

For quick, accurate reference when making warranty claims, group numbers are now given with each parts section. Also note that serial numbers of units are now listed to locate any difference in parts which may occur in later models. Be aware of these unit serial numbers when ordering parts.

Standard torques appear in a chart at the end of the manual, while important individual torques are given on specific parts drawings. These provide easy reference notes for repair and troubleshooting.

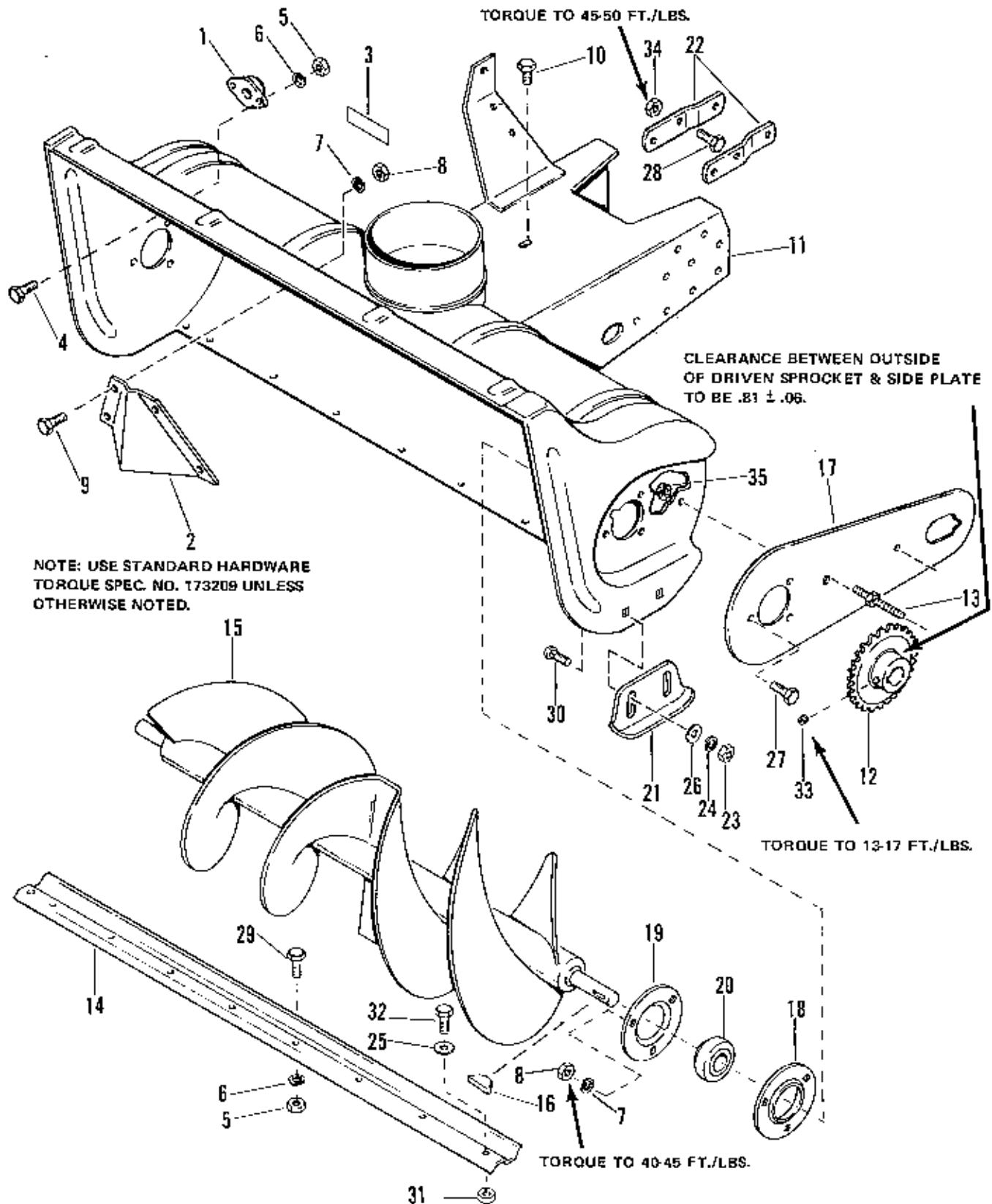
CRITICAL and MAJOR notations point out important facts or instructions which relate to safety or reliability and machine quality. The CRITICAL notation **(C)** pinpoints characteristics which, if not properly followed, can create a safety hazard. The MAJOR notation **(M)** marks characteristics which, if not properly followed, may result in operating failure, shortened product life, or greatly reduced quality of the unit.

We are confident that you will find that these new format parts manuals contain more complete information for your benefit, and that they are much easier to use.

Simplicity
Technical Publications

Table of Contents

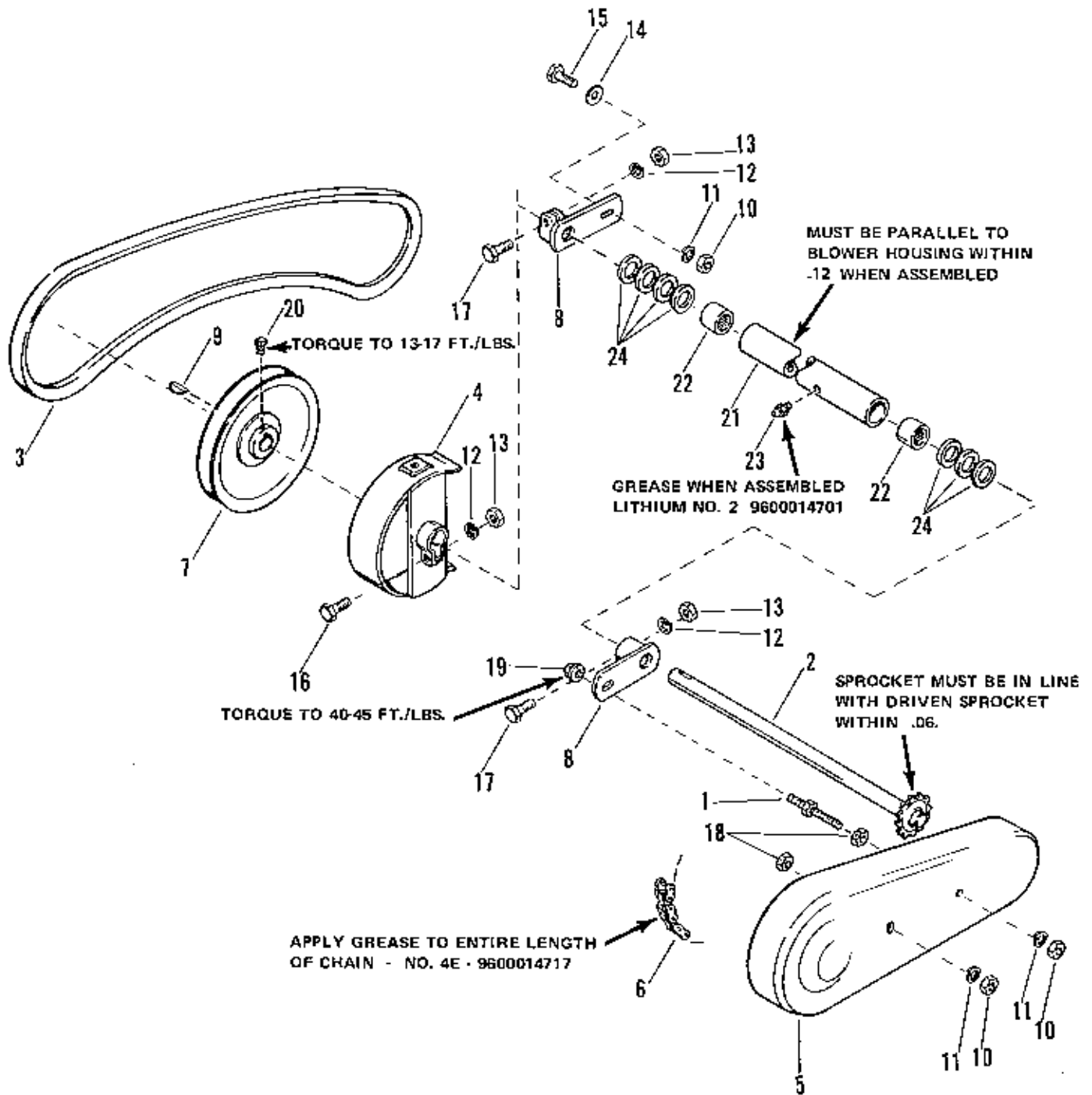
36" SNOW THROWER	2
BODY & ROTOR GROUP	2
DRIVE GROUP	4
SPOUT & MISC. GROUP	6
PUSH BAR & PTO GROUP	8
30" ROTARY TILLER	10
DEFLECTOR & TINE GROUP	10
DRIVE & CLUTCH GROUP	12
CASE GROUP	14
HITCH & LIFT GROUP	16
42" SNOW PLOW & DOZER BLADE	18
42" SNOW PLOW & DOZER BLADE HITCH	20
LIFT LEVER	22
DUMP CART	24
REAR GRASS CATCHER	26
VACUUM COLLECTOR	28
HOUSING & ENGINE GROUP	28
MISC. GROUP	30
ROVING NOZZLE	32
36" VACUUM COLLECTOR ADAPTOR	34
42" VACUUM COLLECTOR ADAPTOR	34
VACUUM COLLECTOR CART COVER	36
HOUR METER	38
HUB CAPS	38
HUB CAPS	40
WINTERIZING KIT	40
STANDARD HARDWARE TORQUE SPECIFICATIONS	Inside Back Cover



Body and Rotor Group

11-76

Ref. No.	Part No.	Qty.	Serial No.	Description
1	106481	1	{00000}-{ }	BEARING
2	106774	1	{00000}-{ }	DEFLECTOR
3	161247	1	{00000}-{ }	DECAL, Safety
4	907727	2	{00000}-{ }	CAPSCREW, 1/4-20 x 5/8
5	916622	9	{00000}-{ }	NUT, Hex, 1/4-20
6	916964	2	{00000}-{ }	LOCKWASHER, 1/4
7	917358	10	{00000}-{ }	LOCKWASHER, 5/16
8	917372	10	{00000}-{ }	NUT, Hex, 5/16-18
9	919318	4	{00000}-{ }	CAPSCREW, Hex, 5/16-18 x 5/8
10	924856	1	{00000}-{ }	SCREW, Self-tapping, 5/16-18 x 1/2
11	1654936	1	{00000}-{ }	BODY AND FRAME ASSEMBLY
12	106653	1	{00000}-{ }	SPROCKET
13	106771	1	{00000}-{ }	STUD
14	106863	1	{00000}-{ }	SCRAPER, Body
15	106856	1	{00000}-{ }	ROTOR
16	151040	1	{00000}-{ }	KEY, Hi-pro
17	171221	1	{00000}-{ }	SIDE PLATE
18	172278	2	{00000}-{ }	FLANGE, Brg.
19	172279	2	{00000}-{ }	FLANGE, Brg., w/fitting
20	173934	2	{00000}-{ }	BEARING, Cartridge, (w/Setscrow)
21	177434	2	{00000}-{ }	SKID
22	177565	2	{00000}-{ }	CLIP, Frame
23	916950	4	{00000}-{ }	NUT, 3/8-16
24	916965	4	{00000}-{ }	LOCKWASHER, 3/8
25	917377	2	{00000}-{ }	WASHER, Plain, 1/4
26	917378	4	{00000}-{ }	WASHER, Plain, 3/8
27	917397	6	{00000}-{ }	CAPSCREW, Hex Hd., 5/16-18 x 3/4
28	920676	4	{00000}-{ }	CAPSCREW, Hex Hd., 7/16-14 x 1
29	921959	7	{00000}-{ }	CAPSCREW, Hex Hd., 1/4-20 x 5/8
30	922110	4	{00000}-{ }	BOLT, Carriage, 3/8-16 x 3/4
31	923362	2	{00000}-{ }	LOCKNUT, 5/16-18
32	925205	2	{00000}-{ }	CAPSCREW, Hex Hd., 5/16-18 x 5/8
33	928691	1	{00000}-{ }	SETSCREW, Skt. 5/16-18 x 5/16
34	930650	4	{00000}-{ }	NUT, Flange, 2-way Lock, 7/16-14
35	928352	1	{00000}-{ }	LOCKNUT, Flange, 3/8-16

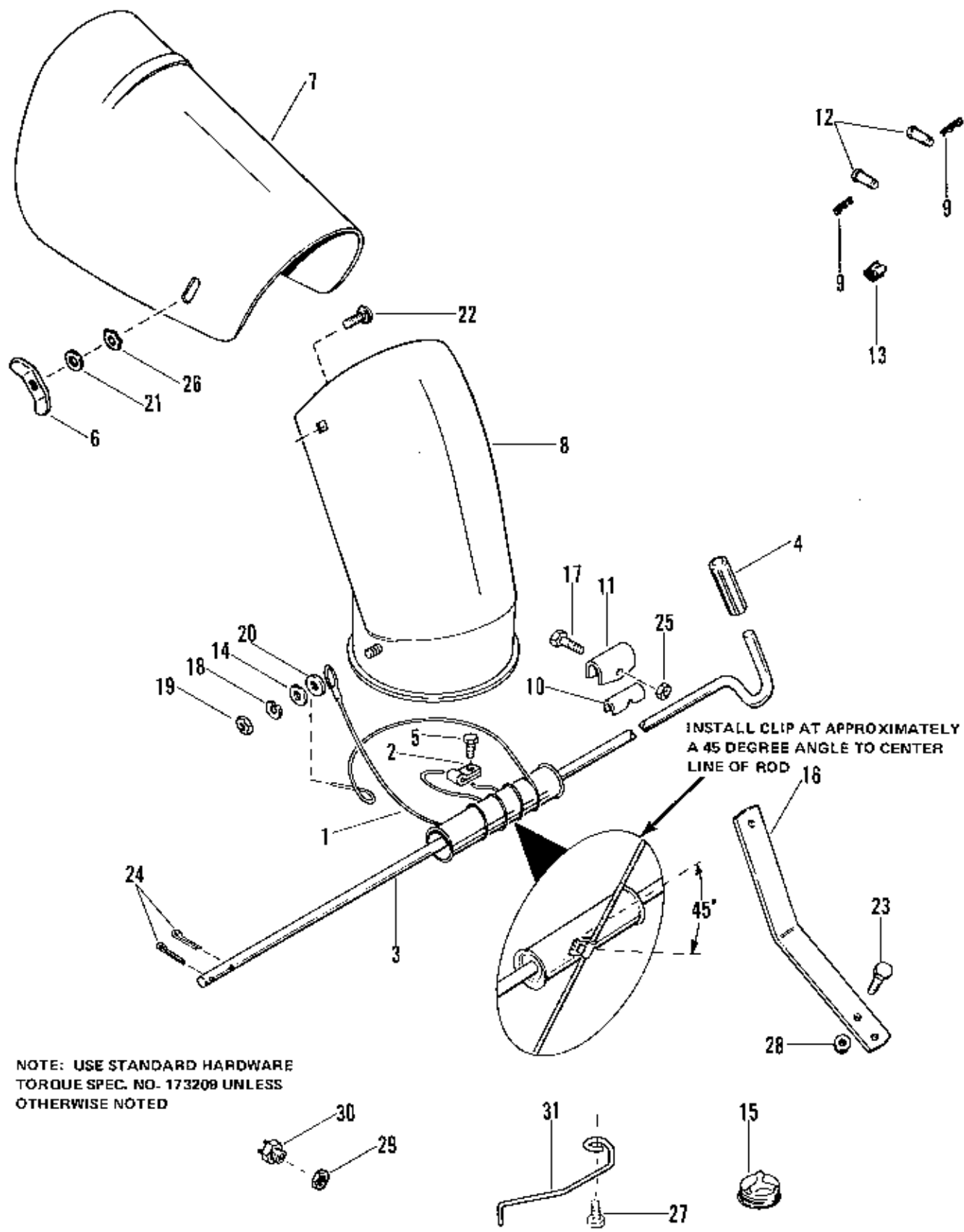


NOTE: USE STANDARD HARDWARE
 TORQUE SPEC. NO. 173209 UNLESS
 OTHERWISE NOTED.

Drive Group

11-76

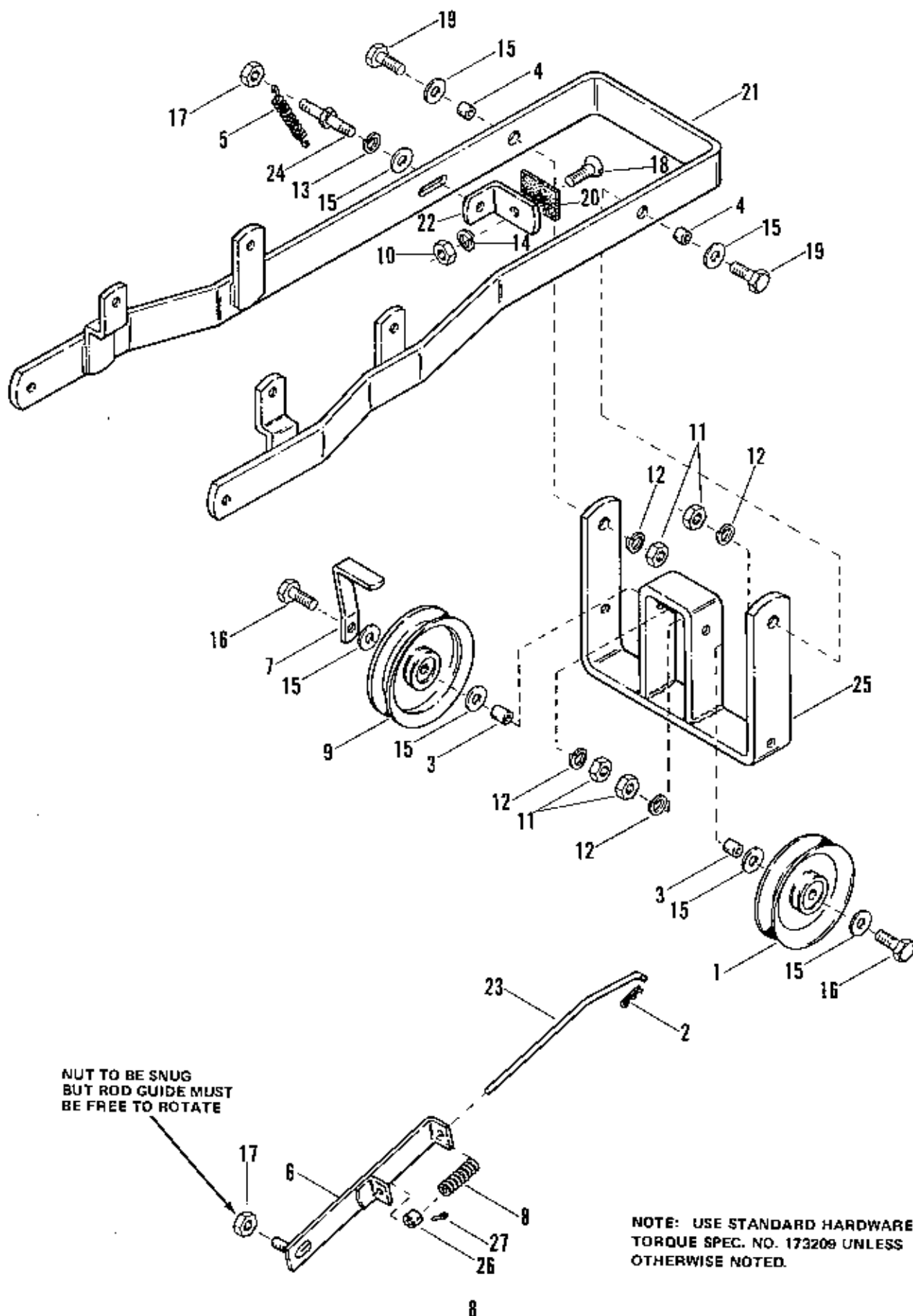
Ref. No.	Part No.	Qty.	Serial No.	Description
1	106771	1	{00000}-{ }	STUD
2	106860	1	{00000}-{ }	SHAFT ASSEMBLY
3	108514	1	{00000}-{ }	V-BELT, 110.1"
4	171211	1	{00000}-{ }	GUARD, Belt
5	171220	1	{00000}-{ }	GUARD, Chain
6	171242	1	{00000}-{ }	CHAIN
7	171248	1	{00000}-{ }	PULLEY
8	176161	2	{00000}-{ }	CLAMP, Housing
9	905123	1	{00000}-{ }	KEY, Woodruff, No. 9, 3/16 x 3/4
10	916950	3	{00000}-{ }	NUT, 3/8-16
11	916965	3	{00000}-{ }	LOCKWASHER, 3/8"
12	917356	3	{00000}-{ }	LOCKWASHER, 5/16
13	917372	3	{00000}-{ }	NUT, 5/16
14	917378	1	{00000}-{ }	WASHER, Plain, 3/8
15	921210	1	{00000}-{ }	CAPSCREW, Hex Hd., 3/8-16 x 1
16	921221	1	{00000}-{ }	CAPSCREW, Hex Hd., 5/16-18 x 1 1/2
17	922127	2	{00000}-{ }	CAPSCREW, Hex Hd., 5/16-18 x 1 3/4
18	923428	2	{00000}-{ }	NUT, Full Lock, 3/8-16
19	928352	1	{00000}-{ }	NUT, Flange Lock, 3/8-16
20	928721	1	{00000}-{ }	SETSCREW, Sq. Hd., 5/16-18 x 1/2
21	106864	1	{00000}-{ }	BEARING, Housing
22	154258	2	{00000}-{ }	BEARING, Needle
23	921133	1	{00000}-{ }	FITTING, Grease
24	8061012	7	{00000}-{ }	WASHER



Spout and Misc. Group

11-76

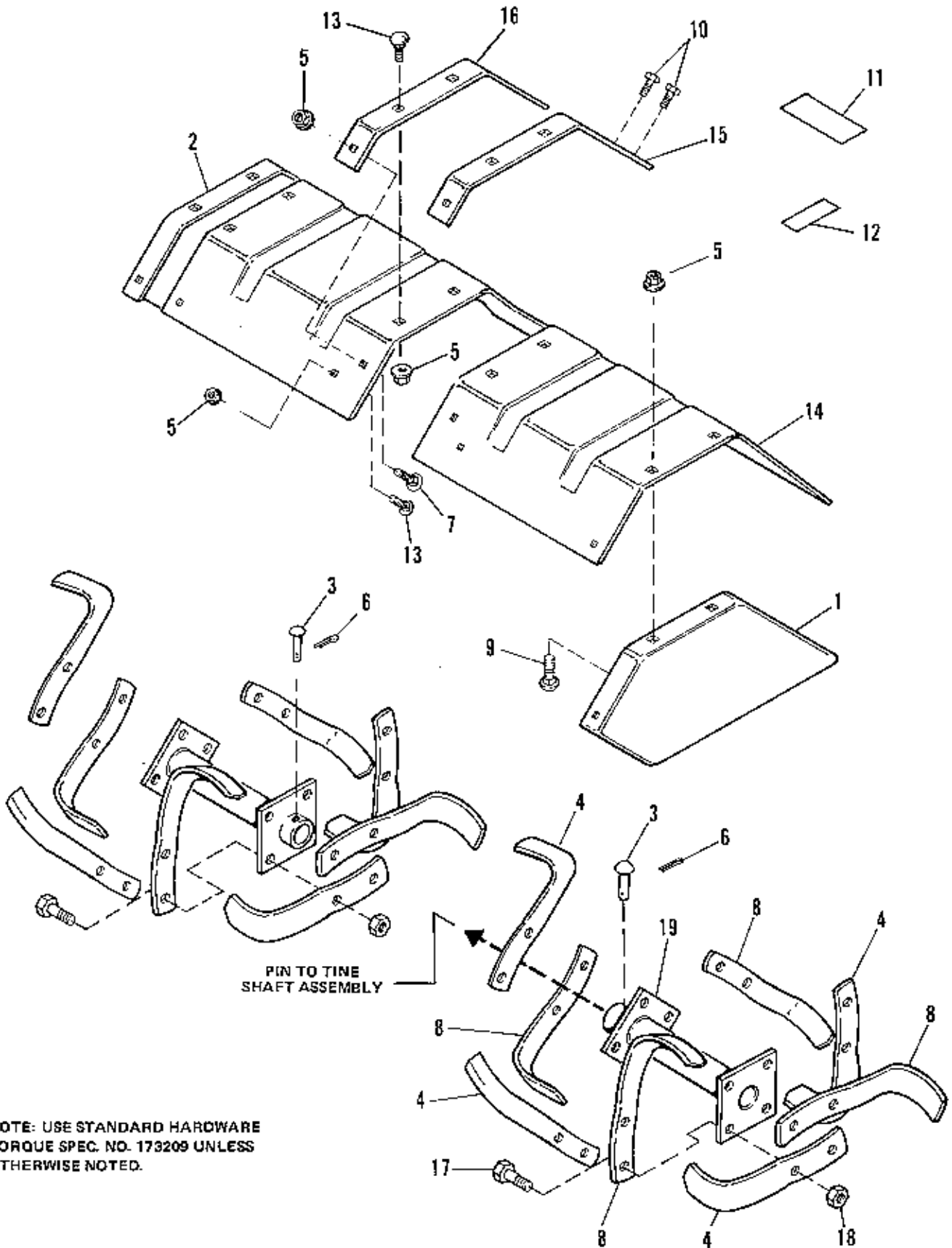
Ref. No.	Part No.	Qty.	Serial No.	Description
1	171362	1	{00000}-{ }	CABLE ASSEMBLY
2	171382	1	{00000}-{ }	CLAMP
3	176333	1	{00000}-{ }	ROD ASSEMBLY, Spout Control
4	176934	1	{00000}-{ }	HANDLE GRIP
5	927428	1	{00000}-{ }	SCREW, Washer Hd., Taptite, 1/4-20 x 3/8
6	106229	2	{00000}-{ }	WING NUT
7	106760	1	{00000}-{ }	EXTENSION, Spout
8	106762	1	{00000}-{ }	SPOUT ASSEMBLY
9	106788	6	{00000}-{ }	CLIP, Spring
10	121175	1	{00000}-{ }	GUIDE, Liner
11	152050	1	{00000}-{ }	GUIDE, Rod
12	156306	6	{00000}-{ }	PIN
13	165073	2	{00000}-{ }	CLIP, Speed
14	171379	1	{00000}-{ }	WASHER, Cup
15	172432	1	{00000}-{ }	CAP, Fuel Tank, Winterized
16	177567	1	{00000}-{ }	SUPPORT, Bracket
17	907729	1	{00000}-{ }	CAPSCREW, Hex Hd., 5/16-18 x 1 1/4
18	917356	1	{00000}-{ }	LOCKWASHER, 5/16
19	917372	1	{00000}-{ }	NUT, Hex, 5/16-18
20	917377	1	{00000}-{ }	WASHER, Plain, 1/4
21	917378	2	{00000}-{ }	WASHER, Plain, 3/8
22	920562	2	{00000}-{ }	BOLT, Carriage, 5/16-18 x 3/4
23	921210	2	{00000}-{ }	CAPSCREW, Hex Hd., 3/8-16 x 1
24	922000	2	{00000}-{ }	PIN, Cotter
25	923362	1	{00000}-{ }	LOCKNUT, 5/16
26	928710	2	{00000}-{ }	LOCKWASHER, Pyramidal, 3/8
27	930601	2	{00000}-{ }	SCREW, Hex Washer Hd., Taptite, 5/16-18 x 5/8
28	930645	2	{00000}-{ }	NUT, Flange, 3/8
29	930647	1	{00000}-{ }	LOCKNUT, 9/16-18
30	1654634	1	{00000}-{ }	INTERLOCK SWITCH
31	1656658	2	{00000}-{ }	STOP, Belt



Push Bar and PTO Group

11-76

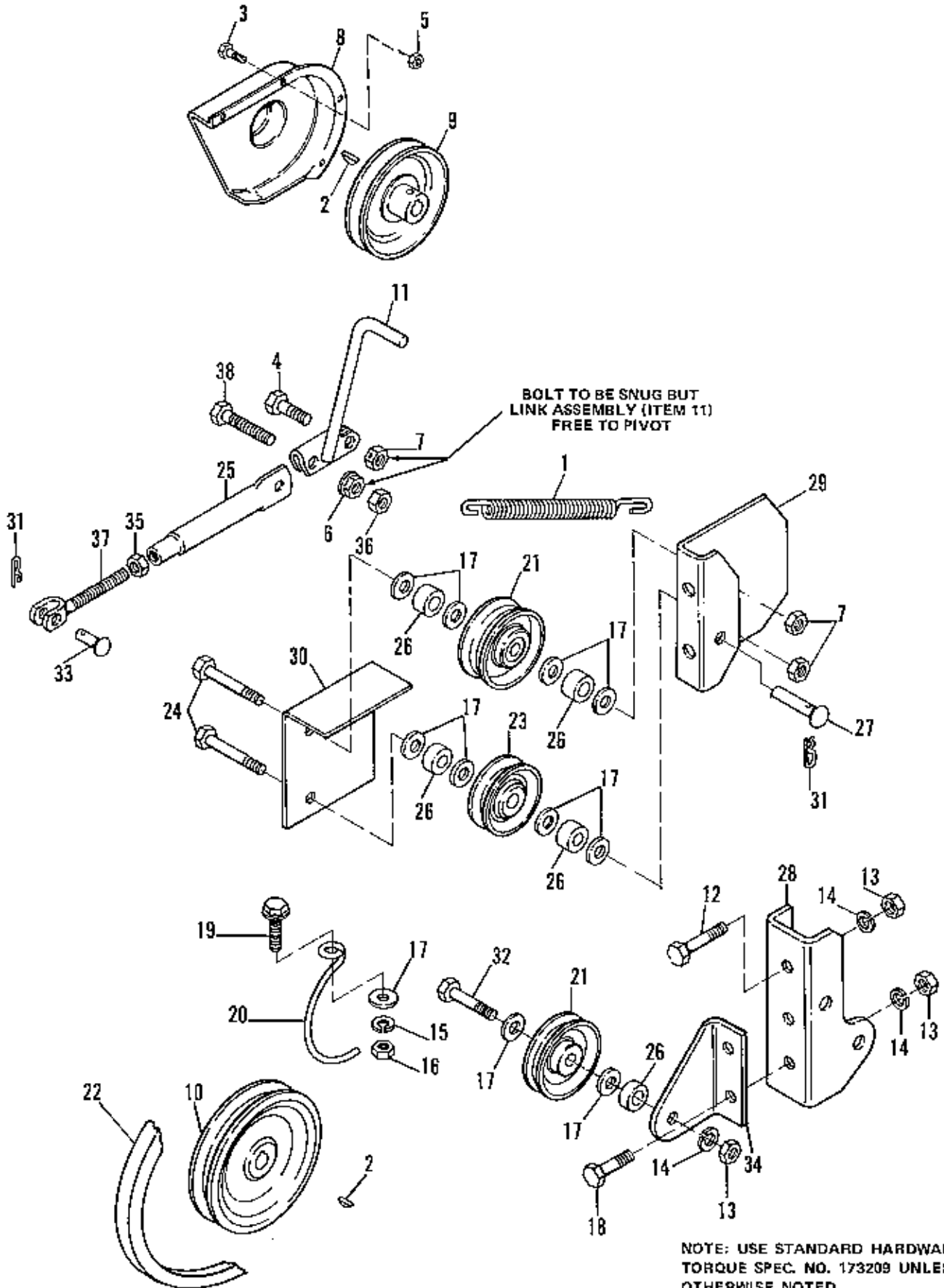
Ref. No.	Part No.	Qty.	Serial No.	Description
1	101096	1	(00000)-()	PULLEY
2	106787	1	(00000)-()	SPRING , Clip
3	154177	2	(00000)-()	SPACER
4	158227	2	(00000)-()	SPACER
5	159159	1	(00000)-()	SPRING
6	162034	1	(00000)-()	GUIDE ASSEMBLY, Clutch Rod
7	162115	1	(00000)-()	STOP, Bolt
8	1656632	1	(00000)-()	SPRING
9	171247	1	(00000)-()	PULLEY, Idler
10	916621	1	(00000)-()	NUT, No. 10-24
11	916950	4	(00000)-()	NUT, 3/8-16
12	916965	4	(00000)-()	LOCKWASHER, 3/8
13	917356	1	(00000)-()	LOCKWASHER, 5/16
14	917365	1	(00000)-()	LOCKWASHER, No. 10
15	917642	7	(00000)-()	WASHER, Plain, 5/16
16	919361	2	(00000)-()	CAPSCREW, Hex Hd., 3/8-16 x 1 3/4
17	923422	2	(00000)-()	NUT, Full Lock, 5/16-18
18	926267	1	(00000)-()	SCREW, Flat Hd., No. 10-24 x 5/8
19	930579	2	(00000)-()	CAPSCREW, Hex Hd., 3/8-16 x 1 1/4
20	1610590	1	(00000)-()	BRAKE SHEAVE
21	1654779	1	(00000)-()	PUSH BAR ASSEMBLY
22	1654780	1	(00000)-()	BRACKET
23	1654781	1	(00000)-()	ROD
24	1655037	1	(00000)-()	STUD
25	1655333	1	(00000)-()	PIVOT PULLEY ASSEMBLY
26	8191022	1	(00000)-()	COLLAR, Set
27	928804	1	(00000)-()	SETSCREW, 1/4-20 x 3/8



Deflector & Tine Group

11-76

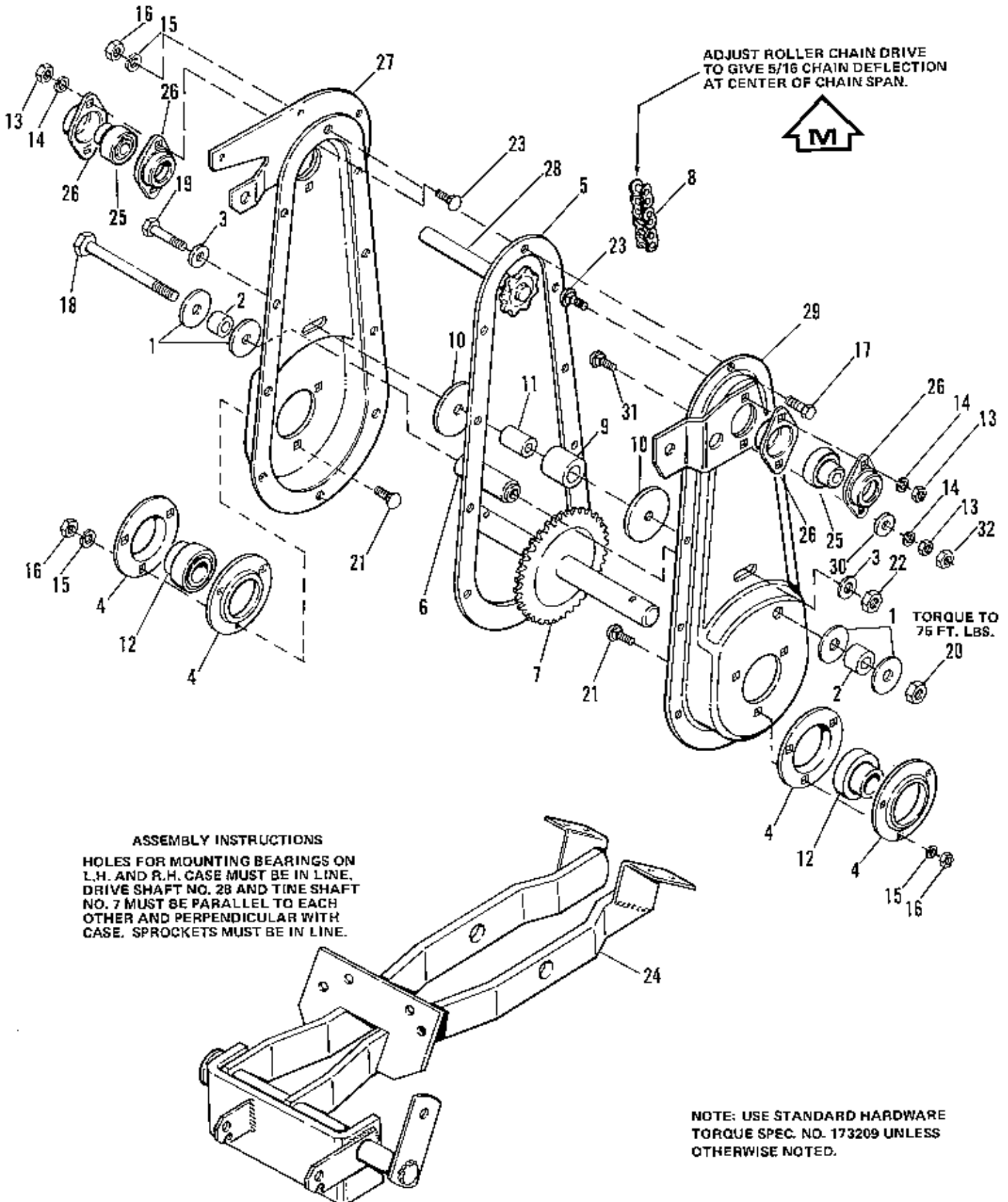
Ref. No.	Part No.	Qty.	Serial No.	Description
1	105273	1	{00000}-{ }	PLATE END, Deflector, L.H.
2	105274	1	{00000}-{ }	PLATE END, Deflector, R.H.
3	118053	2	{00000}-{ }	PIN
4	8152001	8	{00000}-{ }	TINE BLADE, L.H.
5	927557	20	{00000}-{ }	NUT, Hex, Flange, 5/16-18
6	918451	2	{00000}-{ }	PIN, Cotter, 1/8 x 3/4
7	920552	2	{00000}-{ }	BOLT, Carriage, 5/16-18 x 3/4
8	8152002	8	{00000}-{ }	TINE BLADE, R.H.
9	923700	10	{00000}-{ }	BOLT, Carriage, 5/16-18 x 1/2
10	925359	4	{00000}-{ }	SCREW, Tapite, 5/16-18 x 3/4
11	1657317	2	{00000}-{ }	DECAL, Safety
12	1657318	1	{00000}-{ }	DECAL, Drive Control
13	930685	8	{00000}-{ }	BOLT, Carriage, 5/16-18 x 5/8
14	1656558	1	{00000}-{ }	DEFLECTOR
15	1656087	1	{00000}-{ }	BAR, Reinf., L.H.
16	1656088	1	{00000}-{ }	BAR, Reinf., R.H.
17	920488	18	{00000}-{ }	CAPSCREW, Hex, 7/16-20 x 1-1/4
18	928867	16	{00000}-{ }	LOCKNUT, Hex, 7/16-20
19	1656040	2	{00000}-{ }	HUB & PLATE ASSY, Tine



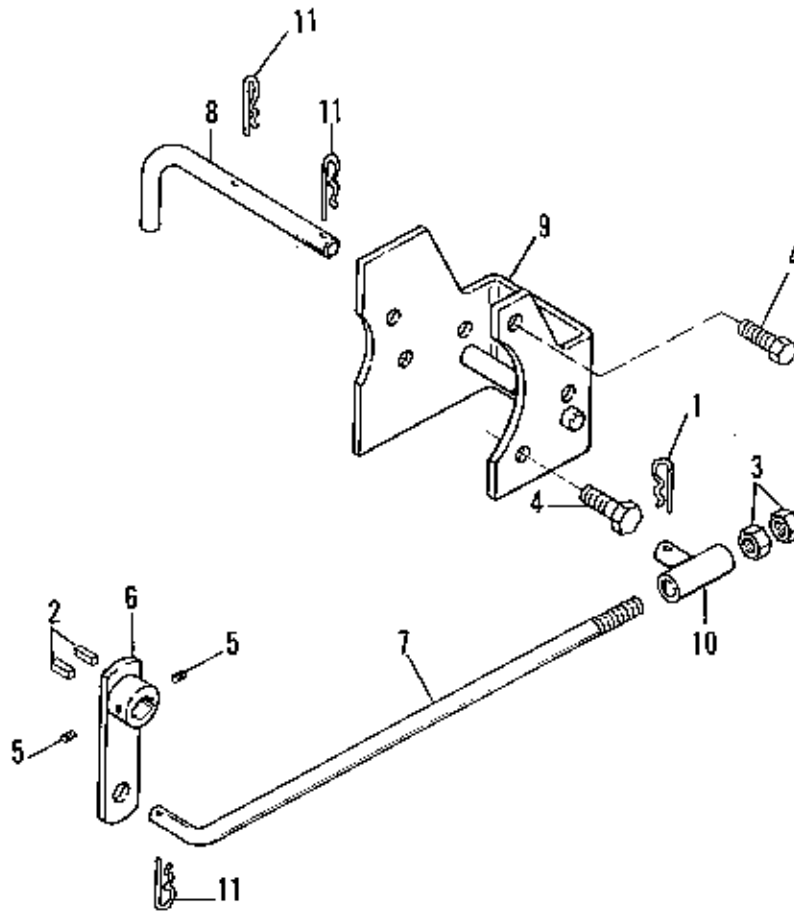
Drive & Clutch Group

11-76

Ref. No.	Part No.	Qty.	Serial No.	Description
1	1657499	1	{00000}-{	SPRING
2	905123	2	{00000}-{	KEY, Woodruff, No. 9, 3/16 x 3/4
3	908295	4	{00000}-{	CAPSCREW, Hex, 1/4-20 x 1/2
4	925204	1	{00000}-{	CAPSCREW, Hex, 3/8-16 x 1
5	923358	4	{00000}-{	LOCKNUT, Hex, Full, 1/4-20
6	930645	1	{00000}-{	LOCKNUT, Hex, Full, 3/8-16
7	923428	3	{00000}-{	LOCKNUT, Hex, Full, 3/8-16
8	1656085	1	{00000}-{	GUARD, Belt-Pulley
9	1657023	1	{00000}-{	PULLEY (Driven)
10	170395	1	{00000}-{	PULLEY, (Driver)
11	1655815	1	{00000}-{	LEVER ASSY, Clutch
12	908127	1	{00000}-{	CAPSCREW, Hex, 3/8-16 x 3/4
13	916950	4	{00000}-{	NUT, Hex, Full, 3/8-16
14	916955	4	{00000}-{	LOCKWASHER, 3/8
15	917358	1	{00000}-{	LOCKWASHER, 5/16
16	917372	1	{00000}-{	NUT, Hex, Full, 5/16-18
17	917642	11	{00000}-{	WASHER, Plain, 5/16
18	919357	2	{00000}-{	CAPSCREW, Hex, 3/8-16 x 7/8
19	930255	1	{00000}-{	SCREW, Lock, Flange, 5/16-18 x 3/4
20	1656003	1	{00000}-{	STOP, Belt
21	154534	2	{00000}-{	PULLEY, Idler
22	163011	1	{00000}-{	V-BELT
23	174561	1	{00000}-{	PULLEY, Idler
24	917402	2	{00000}-{	CAPSCREW, Hex, 3/8-16 x 2
25	1655650	1	{00000}-{	LINK, Clutch
26	1610404	5	{00000}-{	SPACER
27	1655988	1	{00000}-{	PIN
28	1655999	1	{00000}-{	BRACKET, Pulley Support
29	1656000	1	{00000}-{	SUPPORT, Pulley
30	1656084	1	{00000}-{	GUARD, Idler Pulley
31	918196	2	{00000}-{	CLIP, Pin
32	919360	1	{00000}-{	CAPSCREW, Hex, 3/8-16 x 1-1/2
33	1655651	1	{00000}-{	PIN, Lock
34	1655819	1	{00000}-{	BRACKET, Pulley
35	918213	1	{00000}-{	NUT, Hex, Full, 7/16-14
36	928731	1	{00000}-{	LOCKNUT, Hex, Half, 3/8-18
37	1655649	1	{00000}-{	CLEVIS ASSY, Adj.
38	921971	1	{00000}-{	CAPSCREW, Hex, 3/8-16 x 1-3/4



Ref. No.	Part No.	Qty.	Serial No.	Description
1	105010	4	{00000}-{ }	WASHER
2	105386	2	{00000}-{ }	SPACER
3	157424	2	{00000}-{ }	WASHER, Special
4	161069	4	{00000}-{ }	FLANGE, Bearing
5	170022	1	{00000}-{ }	GASKET, Case
6	170029	1	{00000}-{ }	SPACER, Case
7	170030	1	{00000}-{ }	SHAFT ASSY, Tine
8	170053	1	{00000}-{ }	CHAIN
9	170177	1	{00000}-{ }	ROLLER
10	170368	2	{00000}-{ }	WASHER
11	170369	1	{00000}-{ }	SPACER
12	170419	2	{00000}-{ }	BEARING
13	916622	4	{00000}-{ }	NUT, Hex, Full, 1/4-20
14	916964	4	{00000}-{ }	LOCKWASHER, 1/4
15	917356	16	{00000}-{ }	LOCKWASHER, 5/16
16	917372	16	{00000}-{ }	NUT, Hex, Full, 5/16-18
17	919318	10	{00000}-{ }	CAPSCREW, Hex, 5/16-18 x 5/8
18	920272	1	{00000}-{ }	CAPSCREW, Hex, 1/2 - 13 x 5
19	922130	1	{00000}-{ }	CAPSCREW, Hex, 3/8-16 x 2-1/4
20	922134	1	{00000}-{ }	LOCKNUT, Hex, Full, 1/2-13
21	923346	6	{00000}-{ }	BOLT, Carriage, 5/16-18 x 3/4
22	923428	1	{00000}-{ }	LOCKNUT, Hex, Full, 3/8-16
23	931317	3	{00000}-{ }	BOLT, Carriage, 1/4-20 x 3/4, Gr. 5
24	1655644	1	{00000}-{ }	FRAME & HITCH ASSY
25	1656089	2	{00000}-{ }	BEARING
26	1655814	4	{00000}-{ }	FLANGE, Bearing
27	1655824	1	{00000}-{ }	CASE ASSY, Half, R.H.
28	1655827	1	{00000}-{ }	SHAFT ASSY, Drive
29	1655830	1	{00000}-{ }	CASE ASSY, Half, L.H.
30	917377	1	{00000}-{ }	WASHER, Flat, 1/4
31	931320	1	{00000}-{ }	BOLT, Carriage, 1/4-20 x 1-1/4
32	923358	1	{00000}-{ }	LOCKNUT, Full, Hex, 1/4-20

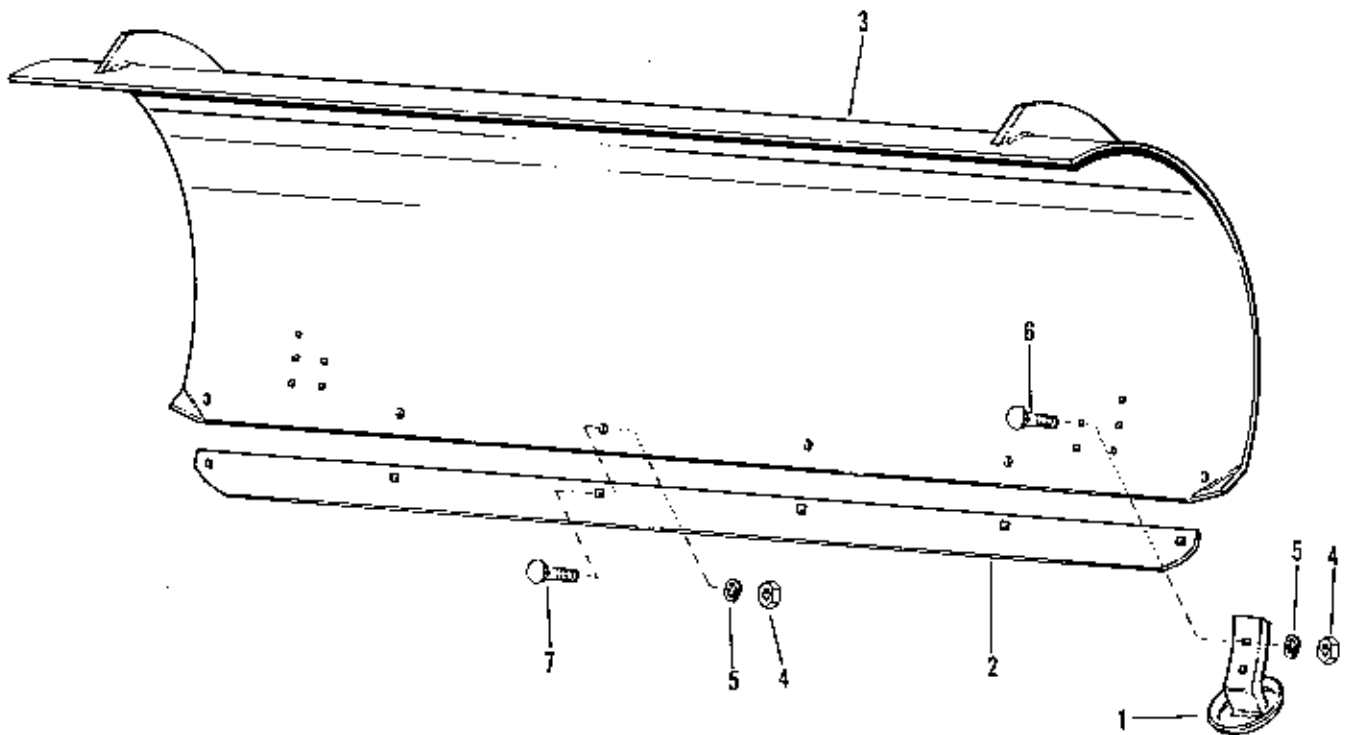


**NOTE: USE STANDARD HARDWARE
TORQUE SPEC. NO. 173209 UNLESS
OTHERWISE NOTED.**

Hitch & Lift Group

11-76

Ref. No.	Part No.	Qty.	Serial No.	Description
1	106788	1	{00000}-{	CLIP, Hair Pin
2	157427	2	{00000}-{	KEY, Square
3	919262	2	{00000}-{	NUT, Hex, Jam, 1/2 x 20
4	921221	2	{00000}-{	CAPSCREW, Hex, 5/16-18 x 1-1/2
5	928709	2	{00000}-{	SCREW, Set, Sq.Hd., 5/16-18 x 3/8, Gr. B
6	1655654	1	{00000}-{	LEVER ASSY, Lift
7	1655831	1	{00000}-{	ROD, Lift
8	1655832	1	{00000}-{	PIN, Hitch
9	1655965	1	{00000}-{	BRACKET ASSY, Draw Bar
10	1656375	1	{00000}-{	TUBE ASSY, Guide
11	918195	3	{00000}-{	PIN, Quick

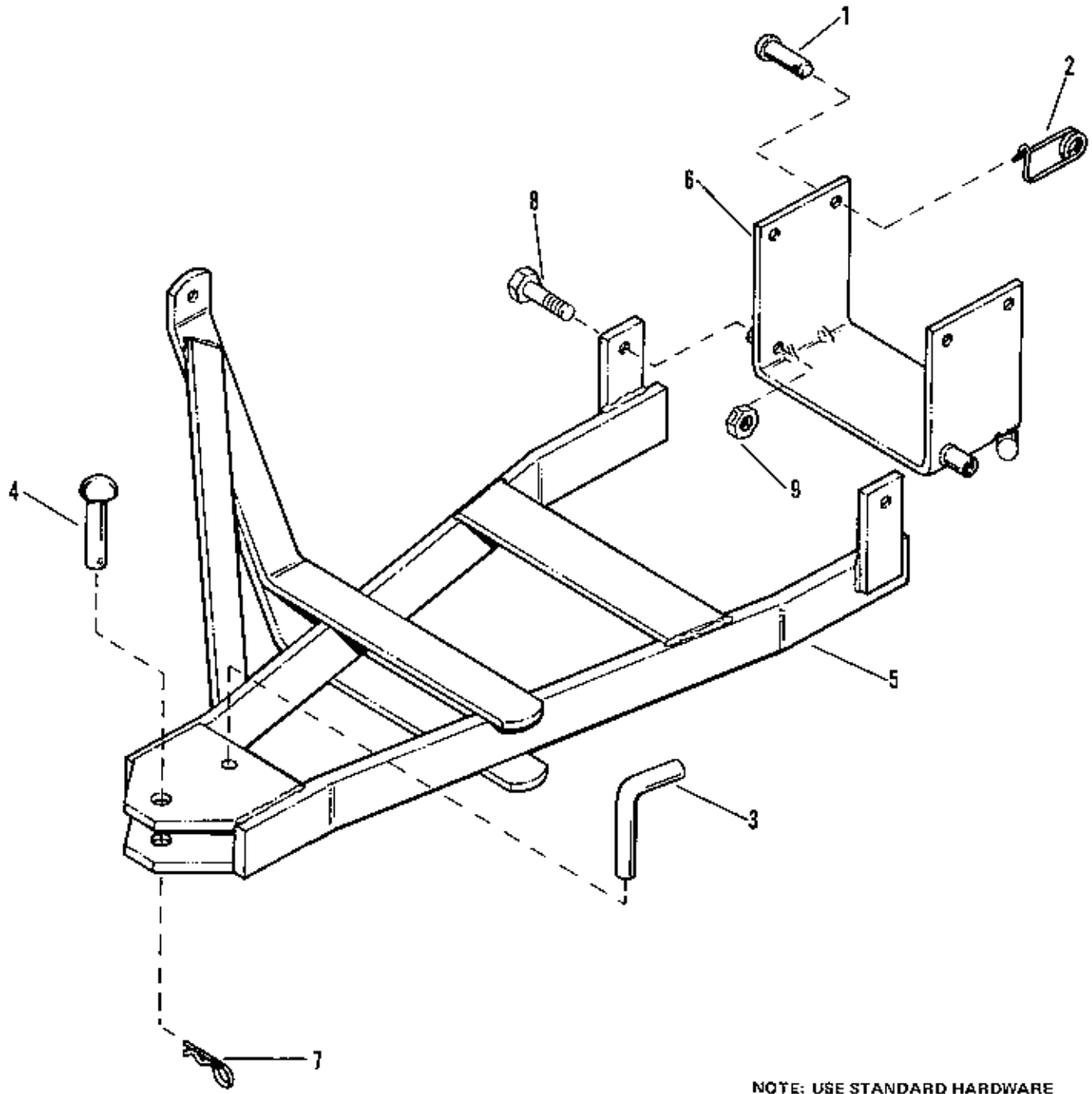


NOTE: USE STANDARD HARDWARE
TORQUE SPEC. NO. 173209 UNLESS
OTHERWISE NOTED.

42" Snow Plow & Dozer Blade

11-76

Ref. No.	Part No.	Qty.	Serial No.	Description
1	107024	2	(00000)-()	SHOE ASSEMBLY
2	107045	1	(00000)-()	PLATE WEAR
3	107047	1	(00000)-()	BLADE ASSEMBLY
4	916950	10	(00000)-()	NUT, Hex Finl, 3/8-16
5	916965	10	(00000)-()	LOCKWASHER, 3/8
6	923232	4	(00000)-()	BOLT, Carriage, 3/8-16 x 1
7	923347	6	(00000)-()	BOLT, Carriage, 3/8 -16 x 3/4

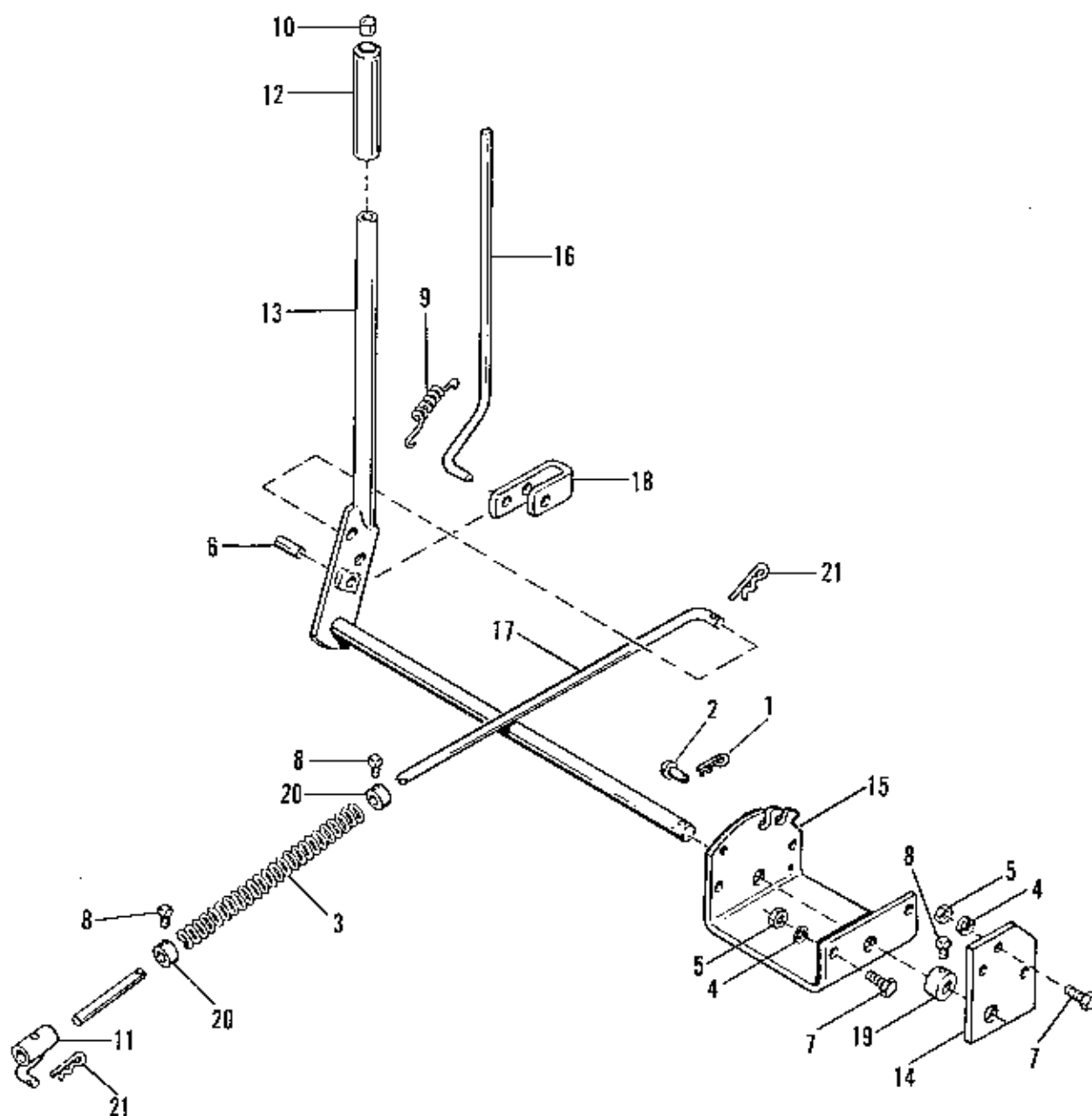


NOTE: USE STANDARD HARDWARE
TORQUE SPEC. NO. 173209 UNLESS
OTHERWISE NOTED.

42" Snow Plow & Dozer Blade Hitch

11-76

Ref. No.	Part No.	Qty.	Serial No.	Description
1	156306	4	(00000)-()	PIN
2	176012	6	(00000)-()	CLIP, Pin, Safety
3	1603601	1	(00000)-()	PIN, Pivot
4	1603602	1	(00000)-()	PIN, King
5	1607911	1	(00000) ()	BAR ASSEMBLY, Push
6	1657663	2	(000001)-()	BRACKET ASSY
7	106788	1	(00000)-()	CLIP, Spring
8	922130	2	(00000)-()	CAPSCREW, 3/8-16 x 2-1/4
9	930645	2	(00000)-()	LOCKNUT, Flange, 3/8-16

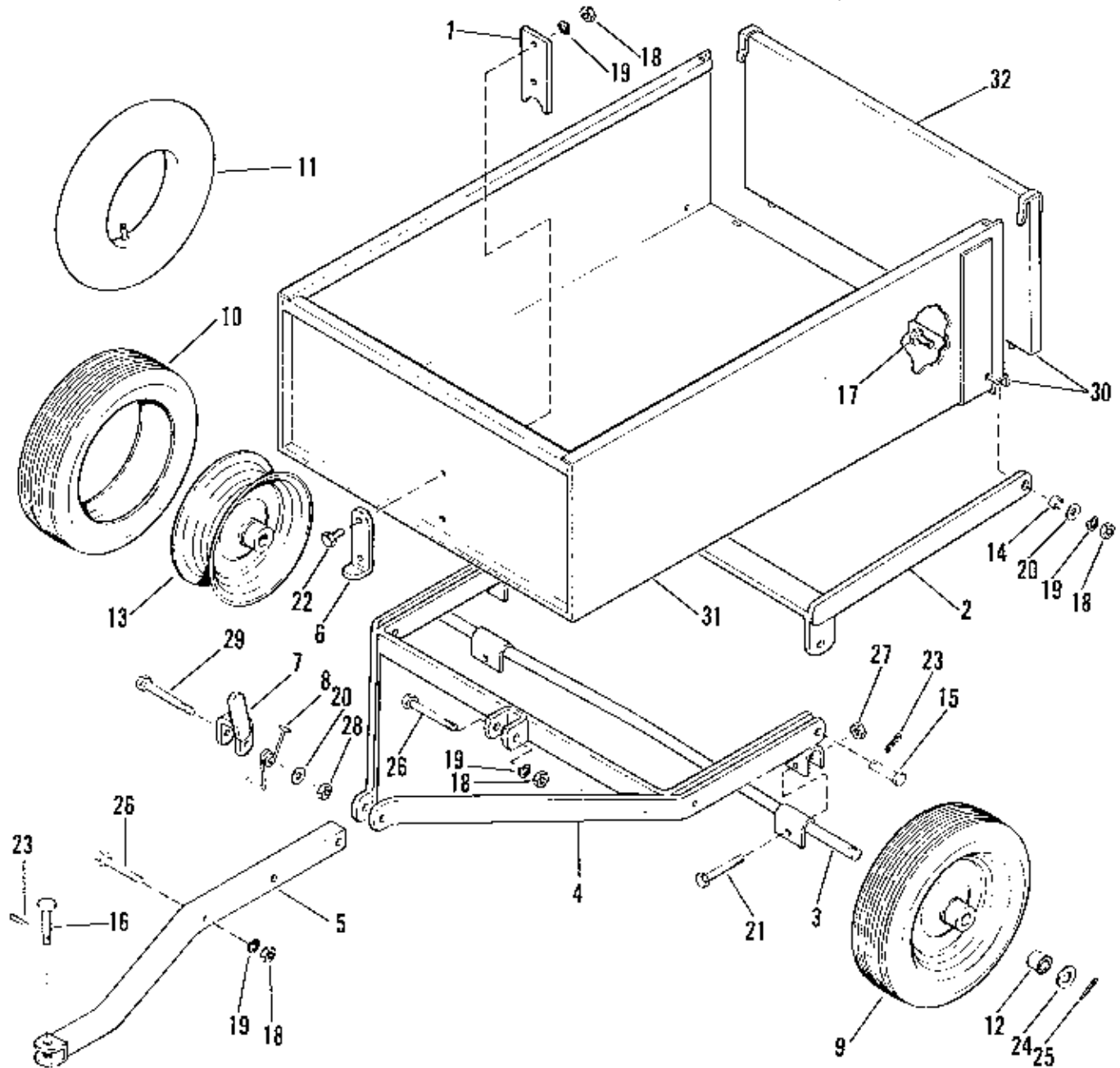


NOTE: USE STANDARD HARDWARE
TORQUE SPEC. NO. 173209 UNLESS
OTHERWISE NOTED.

Lift Lever

11-76

Ref. No.	Part No.	Qty.	Serial No.	Description
1	106787	1	{00000}-{ }	CLIP, Spring
2	153058	1	{00000}-{ }	PIN
3	171011	1	{00000}-{ }	SPRING
4	917356	5	{00000}-{ }	LOCKWASHER, Spring, 5/16
5	917372	5	{00000}-{ }	NUT, Hex, 5/16-18
6	918113	1	{00000}-{ }	PIN, Spring, 3/8 x 1
7	921332	5	{00000}-{ }	CAPSCREW, Hex, 5/16-18 x 3/4
8	928709	3	{00000}-{ }	SCREW, Set, Sq. Hd., 5/16-18 x 3/8
9	1651055	1	{00000}-{ }	SPRING
10	1650157	1	{00000}-{ }	BUTTON
11	1651496	1	{00000}-{ }	GUIDE ASSY, Rod
12	1651702	1	{00000}-{ }	GRIP, Lift Lever
13	1657840	1	{00000}-{ }	LEVER ASSY, Lift
14	1655986	1	{00000}-{ }	SUPPORT, Shaft
15	1655997	1	{00000}-{ }	QUADRANT, Lift
16	1656737	1	{00000}-{ }	ROD, Latch
17	1656741	1	{00000}-{ }	ROD, Lift
18	1657648	1	{00000}-{ }	LATCH, Lever
19	8021010	1	{00000}-{ }	COLLAR, Set
20	8301042	2	{00000}-{ }	COLLAR, Set
21	106788	2	{00000}-{ }	CLIP, Hair Pin

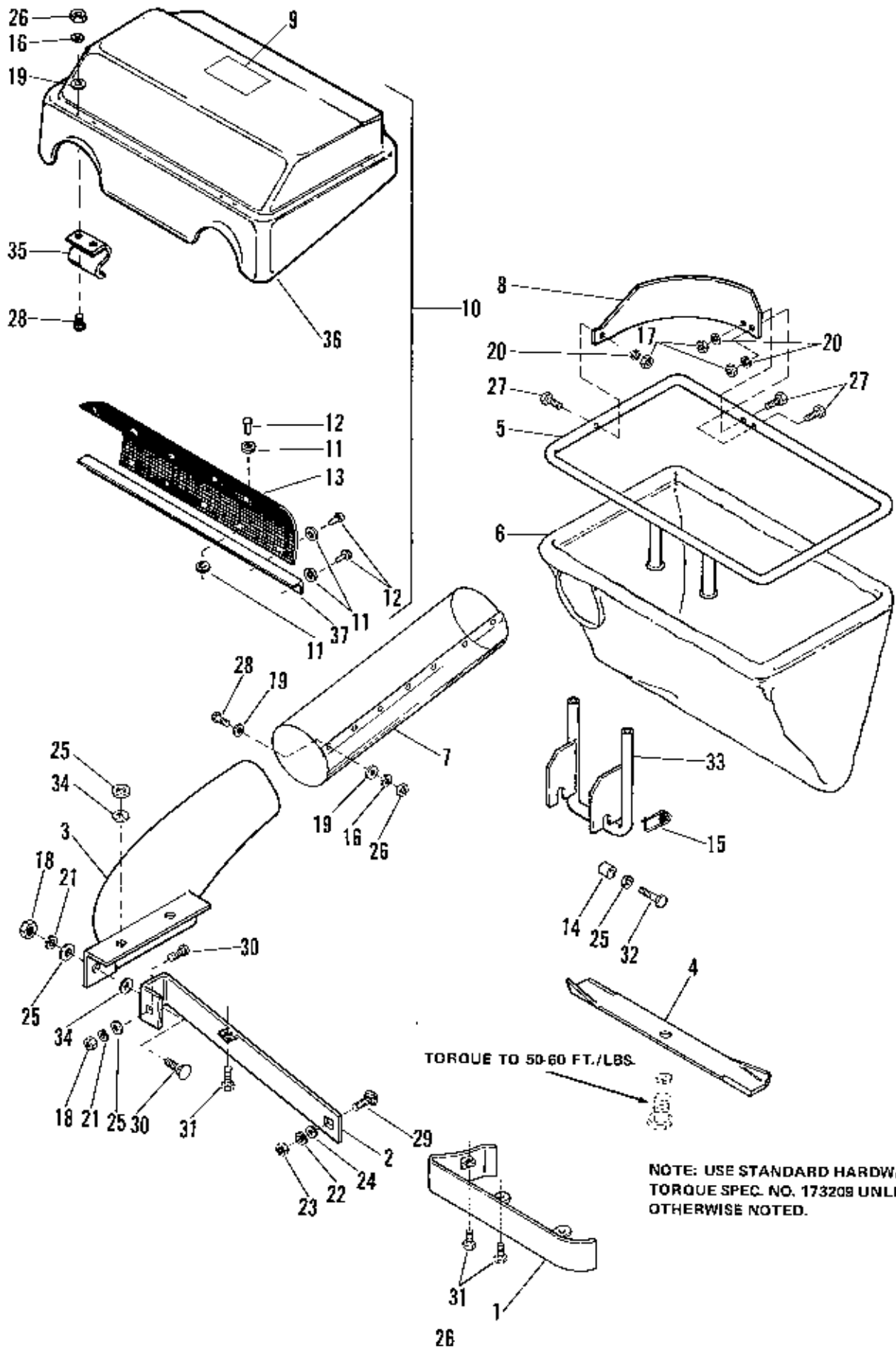


NOTE: USE STANDARD HARDWARE
TORQUE SPEC. NO. 173209 UNLESS
OTHERWISE NOTED.

Dump Cart

11-76

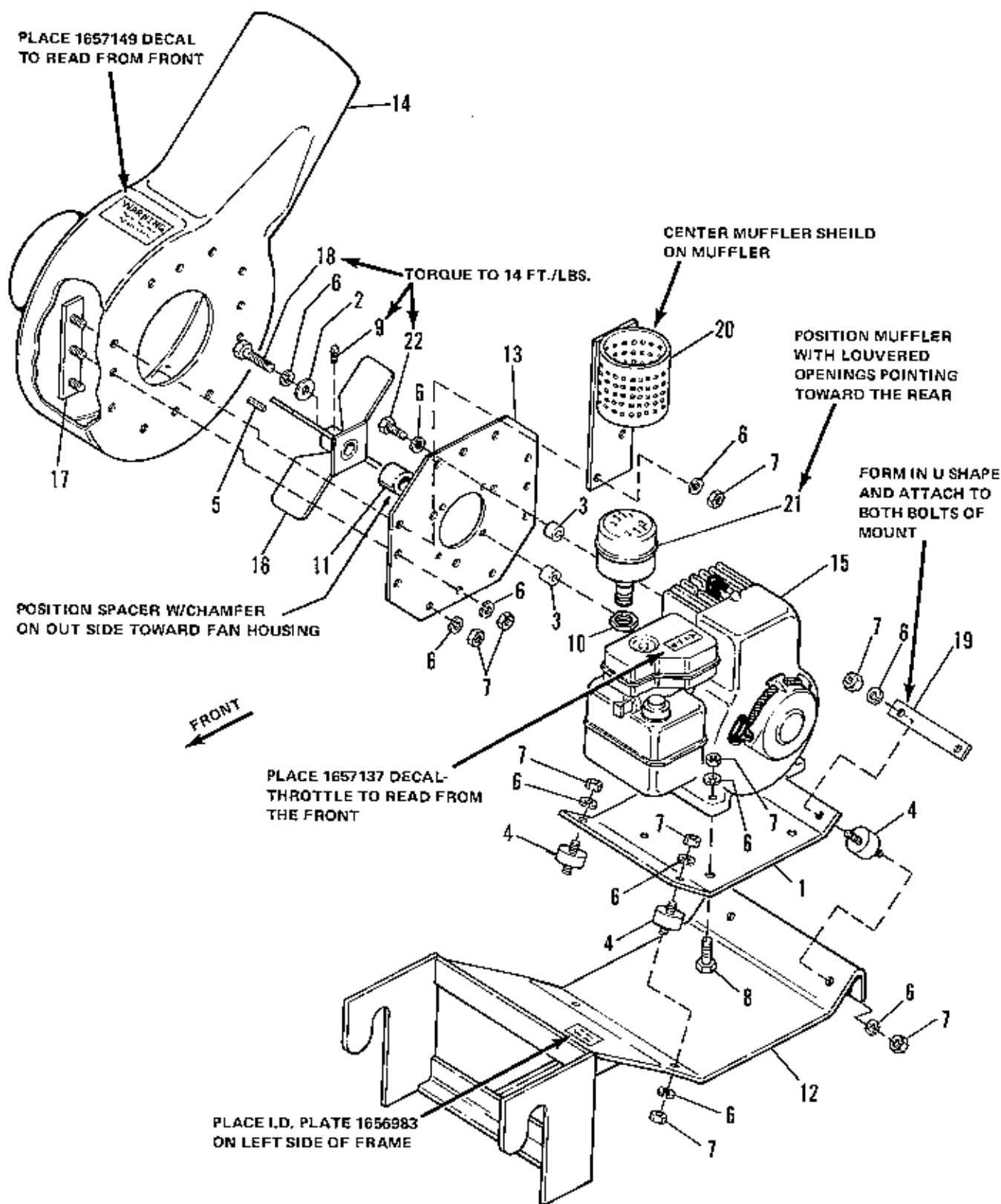
Ref. No.	Part No.	Qty.	Serial No.	Description
1	102006	1	{00000}-[]	PLATE, Box Guide
2	102024	1	{00000}-[]	PIVOT, Box Assy.
3	102027	1	{00000}-[]	AXLE ASSEMBLY
4	102035	1	{00000}-[]	FRAME ASSEMBLY
5	102037	1	{00000}-[]	TONGUE ASSEMBLY
6	102040	1	{00000}-[]	PLATE, Box Catch
7	102051	1	{00000}-[]	CLEVIS ASSEMBLY
8	102075	1	{00000}-[]	SPRING, Torsion
9	170320	2	{00000}-[]	WHEEL & TIRE ASSEMBLY
10	102052	2	{00000}-[]	TIRE
11	153038	2	{00000}-[]	TUBE, 4.00 x 8
12	156316	4	{00000}-[]	BEARING
13	170319	2	{00000}-[]	WHEEL
14	8151076	2	{00000}-[]	BUSHING
15	102004	2	{00000}-[]	PIN, Pivot
16	105249	1	{00000}-[]	PIN
17	907731	2	{00000}-[]	CAPSCREW, Hex, 3/8-16 x 1
18	916950	8	{00000}-[]	NUT, Hex Full, 3/8-16
19	916965	6	{00000}-[]	LOCKWASHER, 3/8
20	917378	3	{00000}-[]	WASHER, 3/8
21	917398	2	{00000}-[]	CAPSCREW, 5/16-18 x 1 3/4
22	917400	2	{00000}-[]	CAPSCREW, Hex, 3/8-16 x 1 1/4
23	918196	3	{00000}-[]	PIN, Quick
24	918433	2	{00000}-[]	WASHER, Plain, 3/4
25	918459	2	{00000}-[]	PIN, Cotter, 3/16 x 1 1/2
26	919362	2	{00000}-[]	CAPSCREW, Hex, 3/8-16 x 2 1/4
27	923362	2	{00000}-[]	NUT, Hex Full, 5/16-18
28	923428	1	{00000}-[]	NUT, Hex Full, 3/8-16
29	930596	1	{00000}-[]	CAPSCREW, Hex, 3/8-16 x 2 3/4
30	1655704	1	{00000}-[]	TRAILER & END GATE ASSY.
31	102002	1	{00000}-[]	BODY, Trailer
32	102003	1	{00000}-[]	GATE END



Rear Grass Catcher

11-76

Ref. No.	Part No.	Qty.	Serial No.	Description
1	1655628	1	{00000}-{	BAFFLE ASSY
2	1656053	1	{00000}-{	BAFFLE ASSY, Discharge
3	1656446	1	{00000}-{	ADAPTOR, Mower
4	1656451	2	{00000}-{	BLADE
5	1656599	1	{00000}-{	FRAME ASSY, Bag
6	1656643	1	{00000}-{	BAG, Grass
7	1656650	1	{00000}-{	TUBE, Discharge
8	1656980	1	{00000}-{	DEFLECTOR
9	1656982	1	{00000}-{	DECAL, Warning
10	1656990	1	{00000}-{	COVER ASSY
11	932938	13	{00000}-{	WASHER, 11/64 x 1/2 O.D.
12	925637	10	{00000}-{	RIVET, Blind, 5/32
13	1656615	1	{00000}-{	SCREEN
14	158227	2	{00000}-{	SPACER
15	176012	1	{00000}-{	PIN, Clip, Safety
16	909055	15	{00000}-{	LOCKWASHER, No. 10
17	916622	3	{00000}-{	NUT, Hex, 1/4-20
18	916950	2	{00000}-{	NUT, Hex, 3/8-16
19	923906	22	{00000}-{	WASHER, 3/16
20	918964	3	{00000}-{	LOCKWASHER, 1/4
21	918965	2	{00000}-{	LOCKWASHER, 3/8
22	917356	1	{00000}-{	LOCKWASHER, 5/16
23	917372	1	{00000}-{	NUT, Hex, 5/16-18
24	917377	1	{00000}-{	WASHER, 1/4
25	917387	6	{00000}-{	WASHER, 3/8
26	917415	15	{00000}-{	NUT, Hex, No. 10-32
27	921961	3	{00000}-{	CAPSCREW, Hex, 1/4-20 x 1-1/4
28	922121	15	{00000}-{	SCREW, Phil. No. 10-32 x 3/8
29	922783	1	{00000}-{	BOLT, Carriage, 5/16-18 x 3/4
30	922110	2	{00000}-{	BOLT, Carriage, 3/8-16 x 3/4
31	923856	3	{00000}-{	SCREW, Hex, Taptite, 5/16-18 x 1/2
32	930579	2	{00000}-{	CAPSCREW, Hex, 3/8-16 x 1-1/4
33	1656620	1	{00000}-{	SUPPORT ASSY, Frame
34	931941	3	{00000}-{	NUT, Push On
35	1656684	4	{00000}-{	CLIP, Cover
36		1	{00000}-{	COVER
37	1656696	1	{00000}-{	ANGLE, Screen

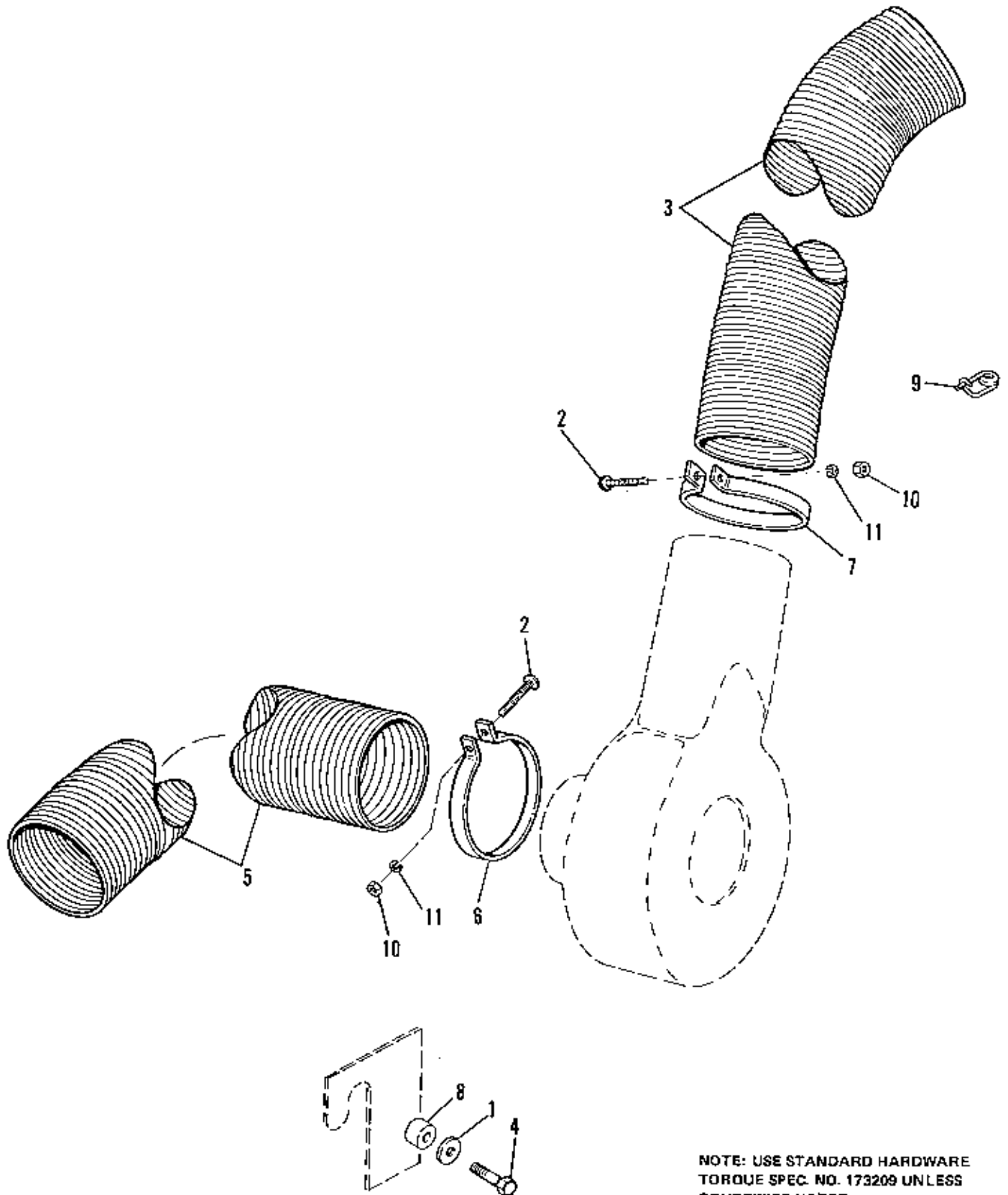


NOTE: USE STANDARD HARDWARE
TORQUE SPEC. NO. 173209 UNLESS
OTHERWISE NOTED.

Vacuum Collector Housing & Engine Group

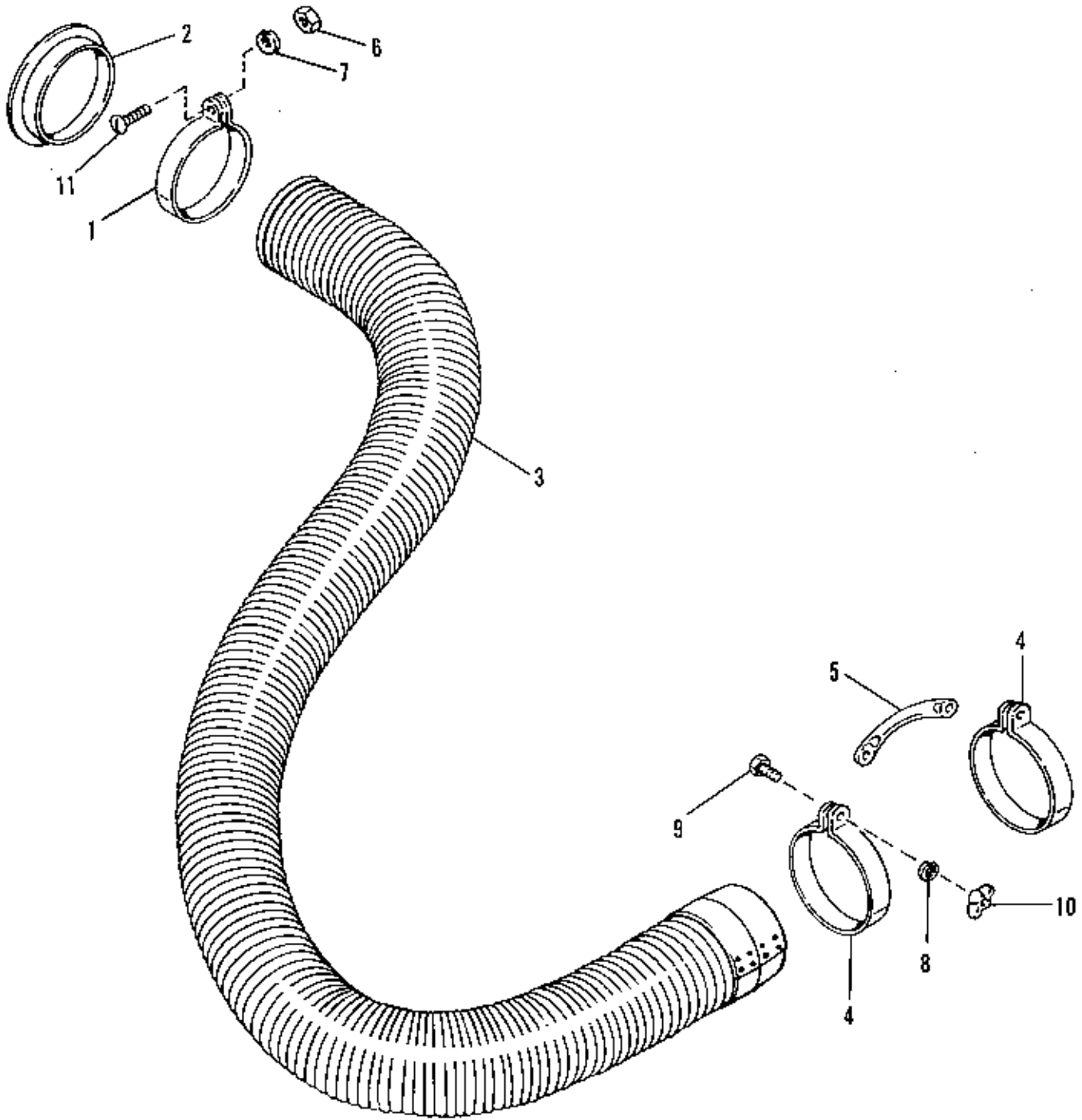
11-76

Ref. No.	Part No.	Qty.	Serial No.	Description
1	123095	1	{00000}-{ }	PLATE, Engine
2	123144	1	{00000}-{ }	WASHER, Special, 21/64 x 1-1/4
3	157081	4	{00000}-{ }	SPACER
4	159085	4	{00000}-{ }	CONNECTOR, Cushion
5	905850	1	{00000}-{ }	KEY, 3/16 x 3/16 x 1
6	917356	29	{00000}-{ }	LOCKWASHER, Spring, 5/16
7	917372	24	{00000}-{ }	NUT, Hex, 5/16-18
8	919933	4	{00000}-{ }	CAPSCREW, 5/16-18 x 1-1/2
9	928721	1	{00000}-{ }	SCREW, Set. Sq. Hd., Cup. Pt., 5/16-18 x 1/2
10	932850	1	{00000}-{ }	LOCKNUT, Pipe, No. BL-50
11	1654907	1	{00000}-{ }	SPACER
12	1658968	1	{00000}-{ }	FRAME ASSY
13	1656972	1	{00000}-{ }	PLATE, Housing Support
14	1656973	1	{00000}-{ }	HOUSING
15		1	{00000}-{ }	ENGINE, Briggs & Stratton, 4 H.P.
16	1657332	1	{00000}-{ }	FAN ASSY
17	1657456	4	{00000}-{ }	BAR ASSY
18	927927	1	{00000}-{ }	CAPSCREW, 5/16-24 x 1
19	1657460	1	{00000}-{ }	STRAP, Ground
20	1657477	1	{00000}-{ }	SHIELD ASSY, Muffler
21	1657505	1	{00000}-{ }	MUFFLER
22	921982	4	{00000}-{ }	CAPSCREW, 5/16-24 x 1-1/4



NOTE: USE STANDARD HARDWARE
TORQUE SPEC. NO. 173209 UNLESS
OTHERWISE NOTED.

Ref. No.	Part No.	Qty.	Serial No.	Description
1	917378	2	{00000}-{ }	WASHER, Plain, 3/8
2	928866	2	{00000}-{ }	SCREW, Rd. Hd., 1/4-20 x 3
3	1657402	1	{00000}-{ }	HOSE ASSY, Outlet, 6" Dia.
4	930579	2	{00000}-{ }	CAPSCREW, Hex, Hd., 3/8-16 x 1-1/4
5	1657403	1	{00000}-{ }	HOSE ASSY, Inlet, 7" Dia.
6	123065	1	{00000}-{ }	CLAMP, Hose
7	123067	1	{00000}-{ }	CLAMP, Hose
8	158227	2	{00000}-{ }	SPACER
9	176012	1	{00000}-{ }	CLIP, Pin Safety
10	916622	2	{00000}-{ }	NUT, Hex, 1/4-20
11	916964	2	{00000}-{ }	LOCKWASHER, Spring, 1/4

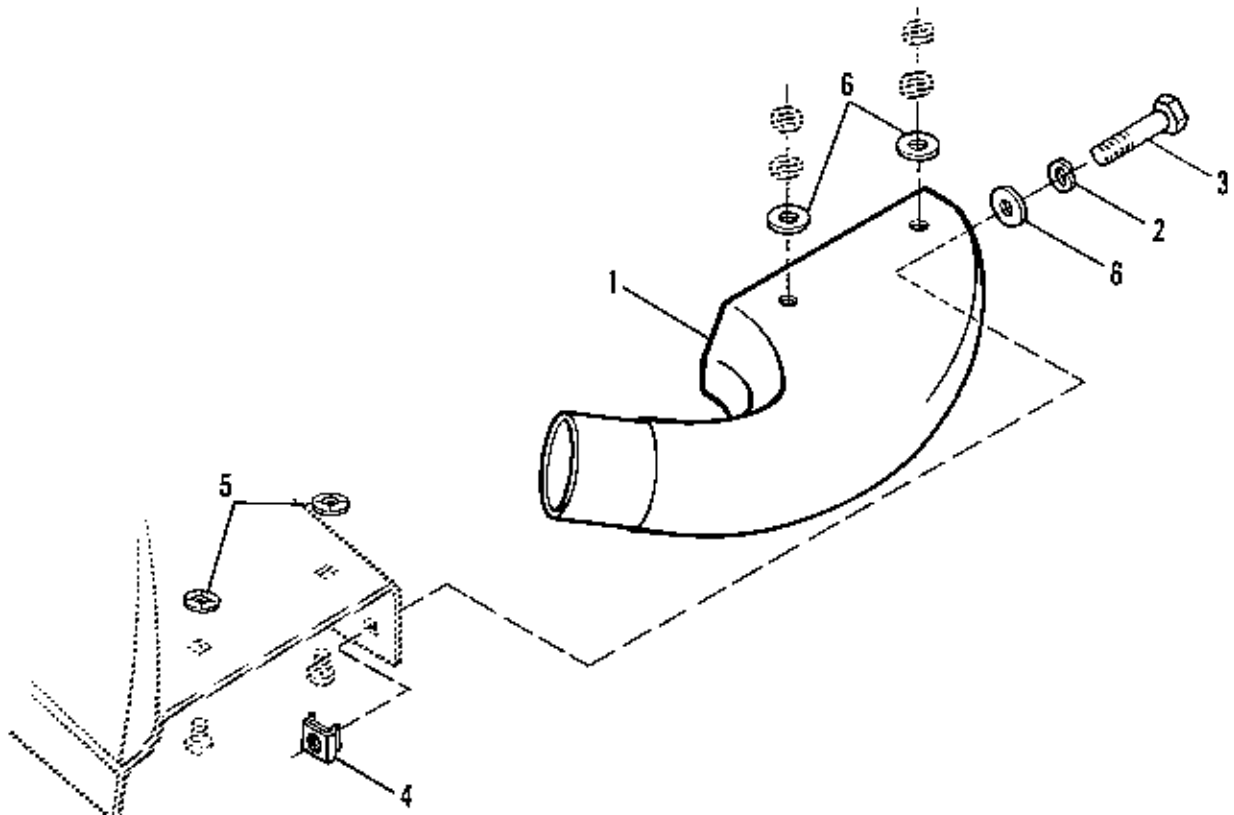
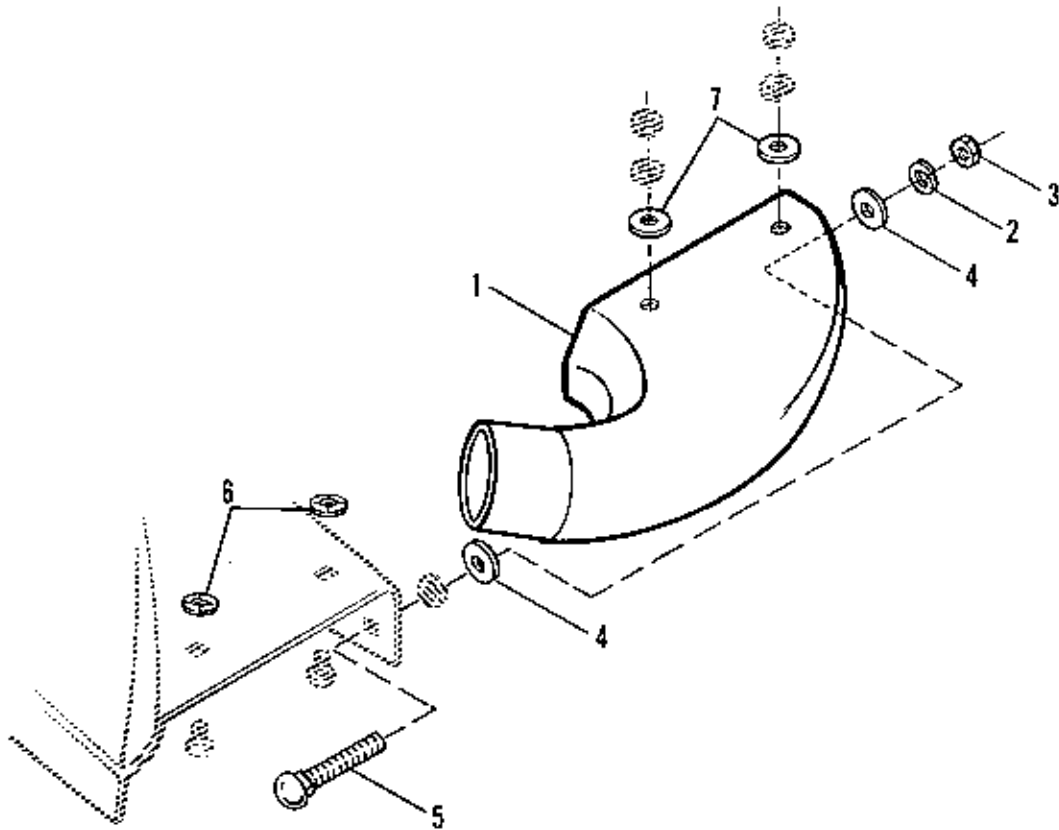


NOTE: USE STANDARD HARDWARE
TORQUE SPEC. NO. 173209 UNLESS
OTHERWISE NOTED.

Roving Nozzle

11-76

Ref. No.	Part No.	Qty.	Serial No.	Description
1	123066	1	{00000}-()	CLAMP, Hose
2	123111	1	{00000}-()	FLANGE, Hose
3	123127	1	{00000}-()	HOSE ASSY
4	123128	2	{00000}-()	CLAMP, Hose
5	123129	1	{00000}-()	HANDLE, Hose
6	916622	1	{00000}-()	NUT, Hex, 1/4-20
7	916964	1	{00000}-()	LOCKWASHER, Spring, 1/4
8	917366	2	{00000}-()	LOCKWASHER, Spring, 5/16
9	917397	2	{00000}-()	CAPSCREW, Hex Hd., 5/16-18 x 3/4
10	918468	2	{00000}-()	NUT, Wing, 5/16-18
11	928866	1	{00000}-()	SCREW, Rd. Hd., 1/4-20 x 3



42" Vacuum Collector Adaptor

11-76

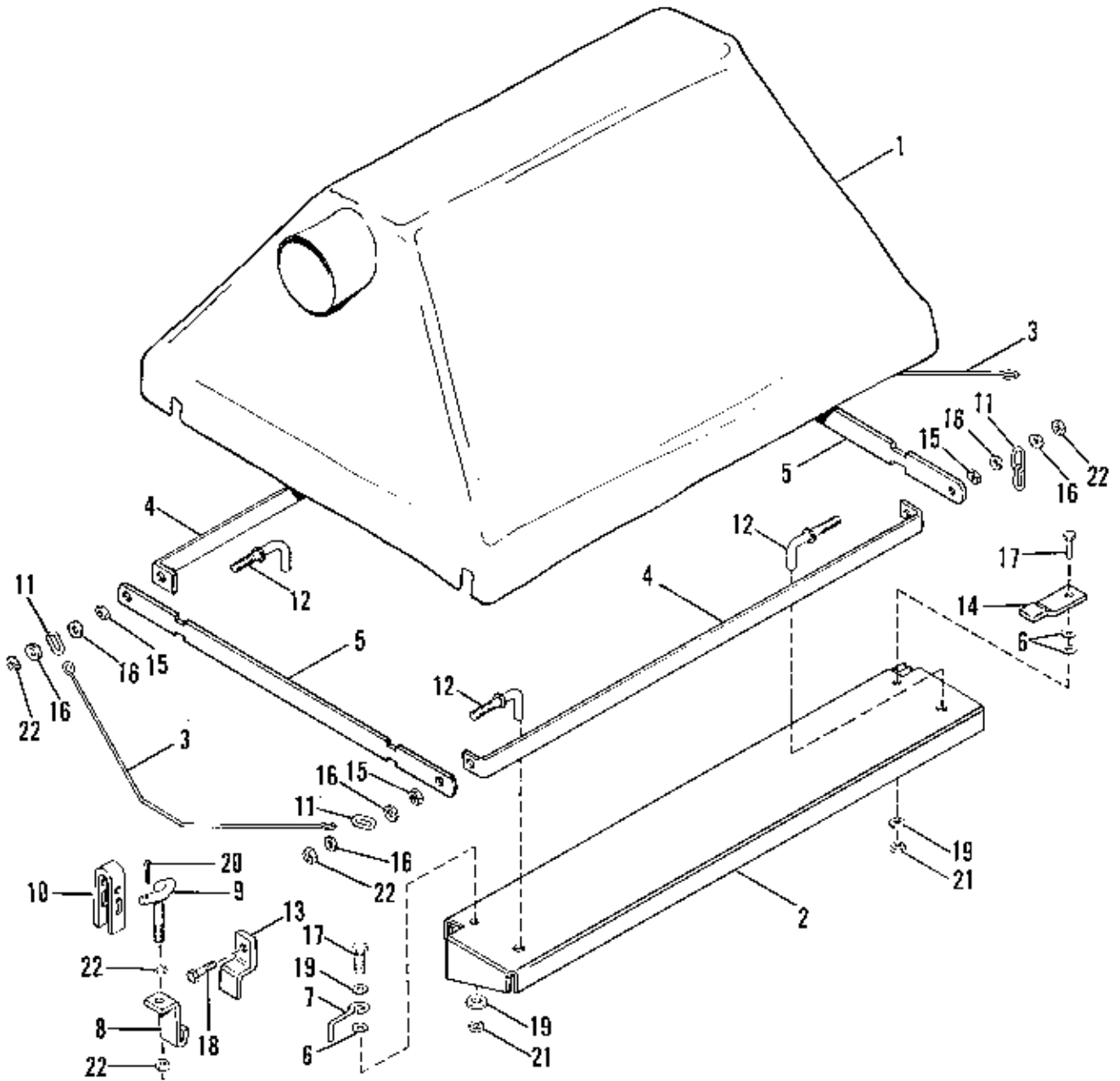
Ref. No.	Part No.	Qty.	Serial No.	Description
1	1857007	1	{00000}-{ }	ADAPTOR, 42" Mower
2	917356	1	{00000}-{ }	LOCKWASHER, Spring, 5/16
3	917372	1	{00000}-{ }	NUT, Hex, 5/16-18
4	917642	2	{00000}-{ }	WASHER, Plain, 5/16
5	920564	1	{00000}-{ }	BOLT, Carriage, 5/16-18 x 1-1/4
6	931942	2	{00000}-{ }	NUT, Push, 3/8
7	8161199	2	{00000}-{ }	WASHER

Mfg. No. 1690228

36" Vacuum Collector Adaptor

11-76

Ref. No.	Part No.	Qty.	Serial No.	Description
1	1857188	1	{00000}-{ }	ADAPTOR, 36" Mower
2	917356	1	{00000}-{ }	LOCKWASHER, Spring, 5/16
3	923325	1	{00000}-{ }	CAPSCREW, Hex, 5/16-18 x 7/8
4	930659	1	{00000}-{ }	NUT, Retainer, 5/16-18
5	931642	2	{00000}-{ }	NUT, Push, 3/8
6	8161199	3	{00000}-{ }	WASHER

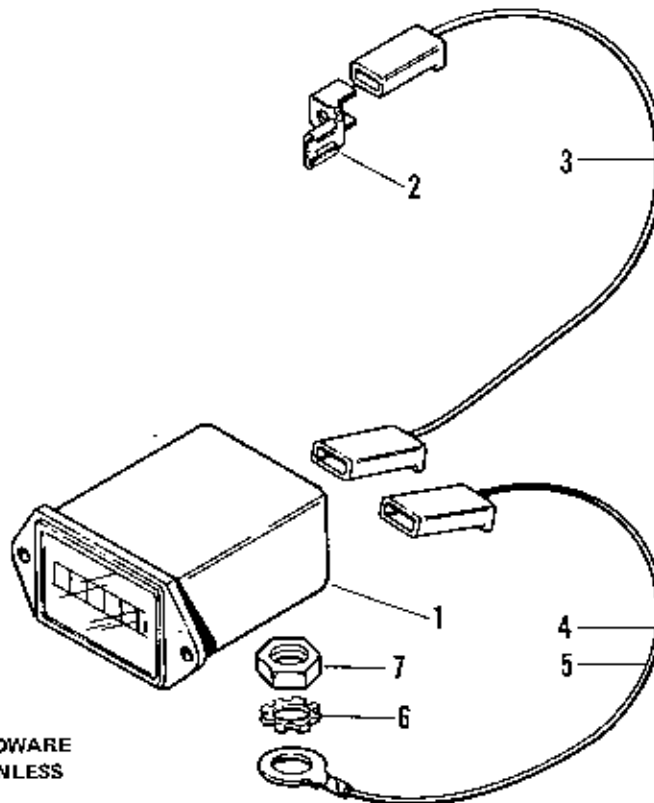
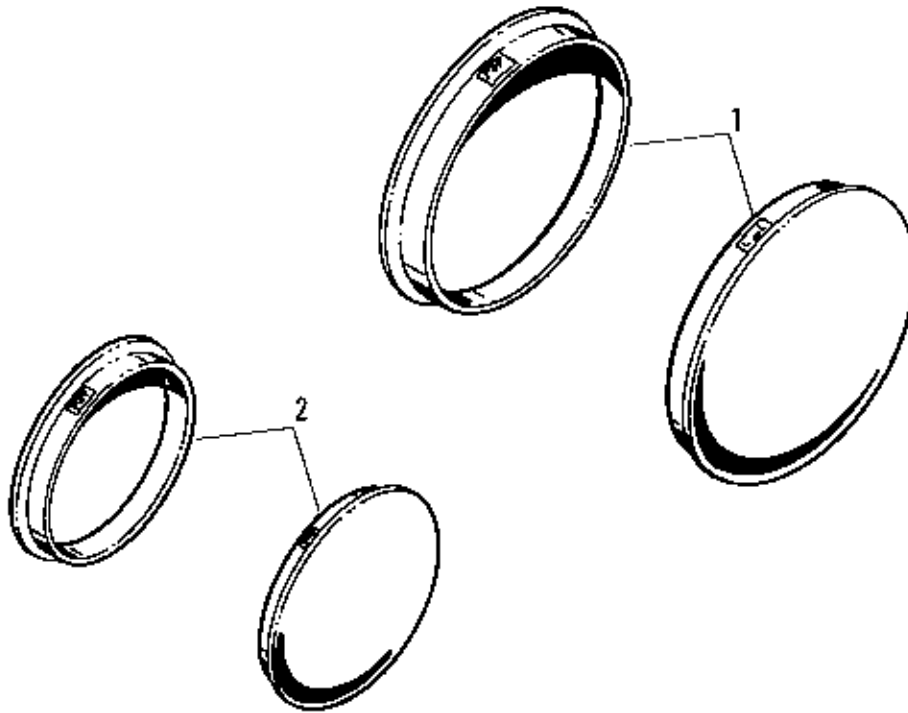


NOTE: USE STANDARD HARDWARE
TORQUE SPEC. NO. 173209 UNLESS
OTHERWISE NOTED.

Vacuum Collector Cart Cover

11-76

Ref. No.	Part No.	Qty.	Serial No.	Description
1	177917	1	{00000}-1	} COVER, Cart
2	178187	2	{00000}-1	} PANEL, Side
3	178188	2	{00000}-1	} BAIL
4	178191	2	{00000}-1	} BAR, Reinf., Side
5	178192	2	{00000}-1	} BAR, Reinf., End
6	159134	6	{00000}-1	} WASHER, Special
7	163065	2	{00000}-1	} STOP, Belt
8	170000	2	{00000}-1	} LATCH
9	170001	2	{00000}-1	} LATCH, Rod
10	170002	2	{00000}-1	} LEVER
11	170134	6	{00000}-1	} LINK, Repair
12	178189	4	{00000}-1	} PIN
13	178190	1	{00000}-1	} BRACKET
14	178198	2	{00000}-1	} BRACKET
15	916950	4	{00000}-1	} NUT, Hex, 3/8-16
16	917378	8	{00000}-1	} WASHER, Plain, 3/8
17	917397	4	{00000}-1	} CAPSCREW, Hex Hd., 5/16-18 x 3/4
18	917400	1	{00000}-1	} CAPSCREW, Hex Hd., 3/8-16 x 1-1/4
19	917642	6	{00000}-1	} WASHER, Plain, 5/16
20	918452	2	{00000}-1	} PIN, Cotter, 1/8 x 1
21	923362	4	{00000}-1	} NUT, Hex Lock, 5/16-18
22	923428	8	{00000}-1	} NUT, Hex, Full Lock, 3/8-16



NOTE: USE STANDARD HARDWARE
TORQUE SPEC. NO. 173029 UNLESS
OTHERWISE NOTED.

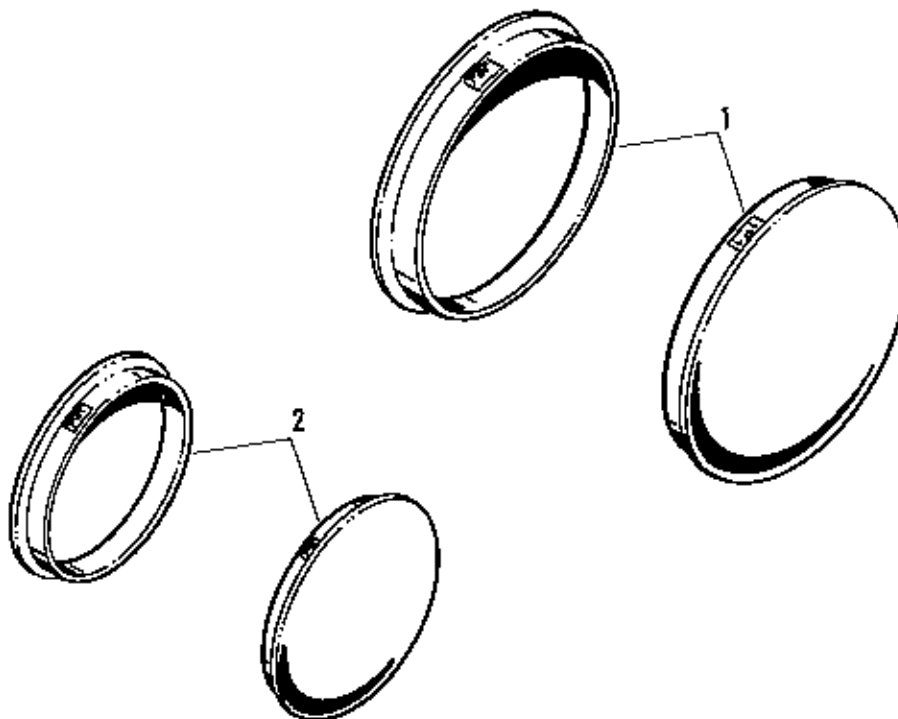
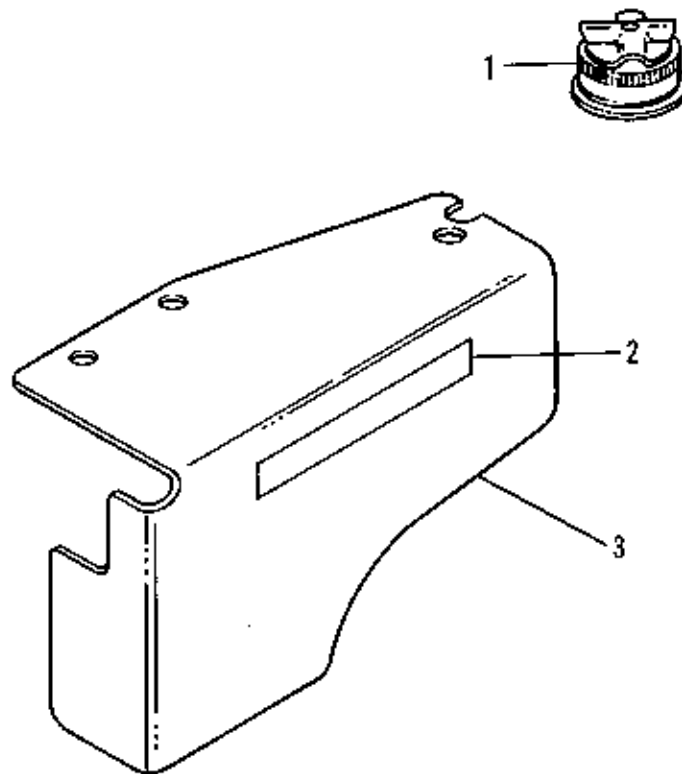
Hub Caps

11-76

Ref. No.	Part No.	Qty.	Serial No.	Description
1	156210	2	{00000}-{ }	CAP, Hub
2	156211	2	{00000}-{ }	CAP, Hub, Front

*Mfg. No. 1690197**Hour Meter*

Ref. No.	Part No.	Qty.	Serial No.	Description
1	172993	1	{00000}-{ }	METER, Hour
2	172996	1	{00000}-{ }	ADAPTOR
3	1656083	1	{00000}-{ }	WIRE ASSY
4	172998	1	{00000}-{ }	WIRE, Meter to Ground
5	1655592	1	{00000}-{ }	CONNECTOR ASSY
6	921830	1	{00000}-{ }	LOCKWASHER, External Tooth, 1/4
7	916622	1	{00000}-{ }	NUT, Hex, Full, 1/4-20



Winterizing Kit

11-76

Ref. No.	Part No.	Qty.	Serial No.	Description
1	106798	1	{00000}-()	CAP, Winterized
2	170252	1	{00000}-()	FILM, Shield
3	1651562	1	{00000}-()	DEFLECTOR, Heat




Mfg. No. 1690181

Hub Caps

11-76

Ref. No.	Part No.	Qty.	Serial No.	Description
1	156210	2	{00000}-()	CAP, Front Hub
2	1655625	2	{00000}-()	CAP, Hub

**TORQUE SPECIFICATION FOR
STANDARD MACHINE HARDWARE**
Tolerance $\pm 10\%$



SIZE	SAE GRADE #2 	SAE GRADE #5 	SAE GRADE #8 
8-32	19 In./Lbs.	30 In./Lbs.	41 In./Lbs.
8-36	20 "	31 "	43 "
10-24	27 "	43 "	60 "
10-32	31 "	49 "	68 "
1/4-20	66 "	8 Ft./Lbs.	12 Ft./Lbs.
1/4-28	76 "	10 "	14 "
5/16-18	11 Ft./Lbs.	17 "	25 "
5/16-24	12 "	19 "	25 "
3/8-16	20 "	30 "	45 "
3/8-24	23 "	35 "	50 "
7/16-14	30 "	50 "	70 "
7/16-20	35 "	55 "	80 "
1/2-13	50 "	75 "	110 "
1/2-20	55 "	90 "	120 "
9/16-20	65 "	110 "	150 "
9/16-18	75 "	120 "	170 "
5/8-11	90 "	150 "	220 "
5/8-18	100 "	180 "	240 "
3/4-10	160 "	260 "	386 "
3/4-16	180 "	300 "	420 "
7/8-9	140 "	400 "	600 "
7/8-14	155 "	440 "	660 "
1-8	220 "	580 "	900 "
1-12	240 "	640 "	1,000 "

NOTES:

1. These torque values are to be used for all Simplicity hardware excluding: Locknuts, self-tapping screws, thread forming screws, and sheet metal screws.
2. Unless otherwise noted on assembly drawings all torque values must meet this specification.

BOLT HEAD MARKING

S.A.E. GRADE:

- 2 
5 
8 