

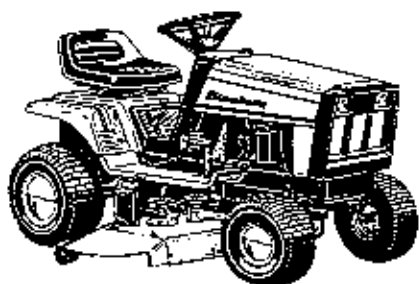
# 4208 & 4211 SERIES

8 HP Tractor  
Mfg. No. 1690840

11 HP Tractor  
Mfg. No. 1690843

11 HP Tractor  
Mfg. No. 1690909

36" Rotary Mower  
Mfg. No. 1690838



# PARTS MANUAL

***Simplicity***<sup>®</sup>

## Product Identification:

When ordering parts, keep your products serial number and manufacturer's number in mind. Variations may occur in a part between early and later model products, causing the product serial number to be listed in the parts description whenever these variations occur.

Record your I.D. numbers here for quick, future reference.

Product Mfg. No. \_\_\_\_\_ S/N \_\_\_\_\_ Mower Mfg. No. \_\_\_\_\_ S/N \_\_\_\_\_

## Attention:

Standard torques appear in a chart at the end of the manual, while important individual torques are given on specific parts drawings.

CRITICAL and MAJOR notations point out important facts or instructions which relate to personal safety and proper machine operation. Any CRITICAL notation **C** which may appear in this book, pinpoints characteristics which, if not properly followed, can create a safety hazard. Any MAJOR notation **M** which may appear in this book, marks characteristics which, if not properly followed, may result in operating failure, shortened product life, or greatly reduced quality of the unit.

For your convenience, assembly notes are included in parts drawings to assist in repair and assembly of unit.

**NOTE: Specifications may change without notice.**

**SIMPLICITY PRODUCTS FOR THE PROPER CARE OF EQUIPMENT**  
These genuine *Simplicity* products will help the owner extend the life of his equipment.

## OILS - SPECIFICALLY BLENDED OF HIGH QUALITY BASE OILS & ADDITIVES.

**Special Worm Gear (Rollcut) Oil** for use in all tillers and snowthrowers with worm gear auger drive. Required for protection of brass gears and mating parts. **Case of 12 Quarts, Part #1685100, Individual Quarts 118065.**

**Multi-Purpose Hydraulic/Transmission Oil** for use in most hydraulic applications, and hydrostatic and gear transmissions. Specific *Simplicity* applications: All hydrostatic transmissions, all bevel gear cases, all Broadmoor, Landlord, Sovereign, 4000, 6000, 7000 transmissions (except Peerless Gear Transmissions). (Not used in SunStar tractor transmission.) **Case of 12 Quarts, Part #1685516, 2½ Gallon Container, Part #1685539.**

**2-Cycle Engine Oil**, a premium lubricant for all 2-cycle air-cooled engines. **Case of 12 Part #1685517.**

**SAE 5W 30 SF/CD Cold Weather Engine Oil** for use in all four cycle and diesel engines at 30° temp. and under. **Case of 12 Quarts, Part # 1685576.**

**SAE 15W40 SF/CD Engine Oil** for gas and diesel engines, warm weather; see engine manufacturer recommendations. **Case of 12 Quarts, Part #1685554.**

**Grease Gun Kit** has 12" flexible hose to get into tight spots with ease. Kit contains: gun and 1-8 oz. tube of grease, **Part #1685510.** For replacement tube, order **Part # 103077.**

**Pneumatic Tire Seal**, seals all leaks including bead leaks and punctures up to 3/16 inch diameters. Prevents flats for tread life of tire. Available in following amounts.

**Case of 12 - 11 Oz. Tubes** 1685537  
**Case of 24 - 11 Oz. Tubes** 1685525  
**5 Gallon Pail** 1685527

**Touch-Up Paint** keeps equipment in showroom condition.

Spray Cans	Quarts	Daubers 12/Ctn.
*Simplicity Orange - 103262 (12 cans/1685179)	1685037	1685520 - Mixed (6 Simp. Orange, 6 White)
**Classic Orange - 1685558 (12 cans/1685559)	1685560	1685562 - Mixed (6 Classic Orange, 6-White)
White 103049 (12 cans/1685178)	1685032	1685562 - Mixed (6-Classic Orange, 6-White) 1685520 - Mixed (6-Simp. Orange, 6-White)
Black - 1685551 (12 Cans/1685552)	N.A.	N.A.

\*For 1977 thru early 1986 products.  
\*\*For products produced after 12/1/85.

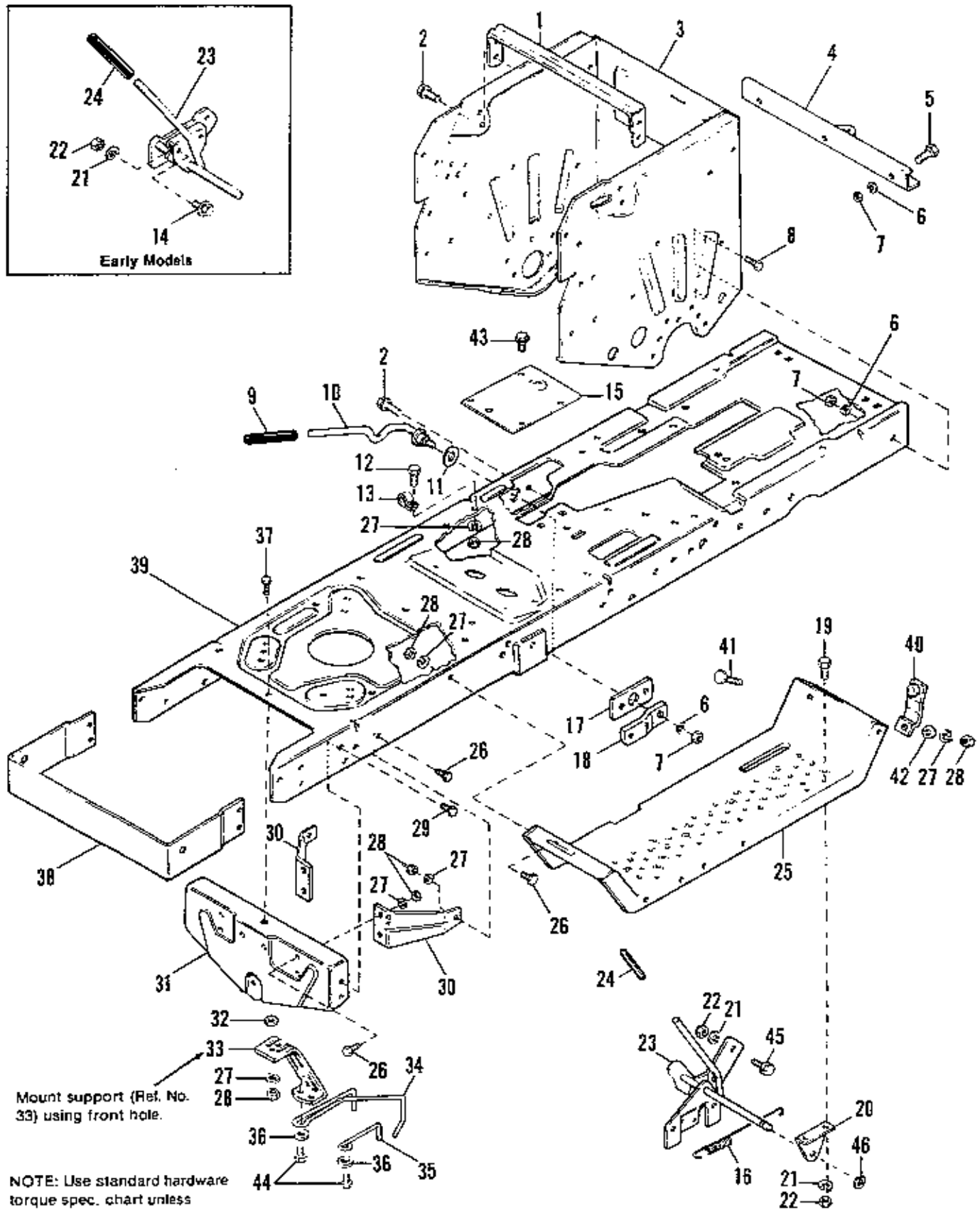
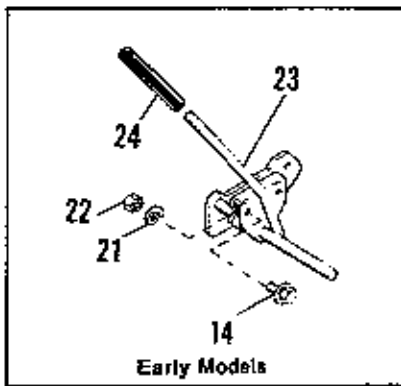
**Simplicity Designer Seat Covers** are double stitched, easy care vinyl. Keeps new seats new, makes worn seats look new.

- Small Cover for 4000, 5000,  
& 6100 Tractors 1685540
- Large Cover for 6200, 7000 &  
9000 Tractors 1685541
- SunStar Seat Cover 1685577

**Extend Equipment Life - Use Only Genuine *Simplicity* Parts**

# Table of Contents

FRAME GROUP .....	2
FRONT AXLE GROUP .....	4
STEERING & FRONT WHEEL GROUP .....	6
ENGINE GROUP .....	10
REAR TIRES & DRIVE GROUP .....	12
BRAKE & CLUTCH .....	14
ELECTRICAL GROUP .....	16
HOOD, GRILLE & DASH GROUP .....	22
SEAT & DECK GROUP .....	24
36" MOWER, DECK & ARBOR GROUP .....	26
36" CLUTCH & ROLLER SUPPORT GROUP .....	28
36" ROLLER & MISC. GROUP .....	30
DECAL GROUP .....	32
PEERLESS TRANSAXLE MODEL 801-019 .....	34
PEERLESS TRANSAXLE MODEL 801-099A .....	38
STANDARD TORQUE SPECIFICATIONS .....	Inside Back Cover



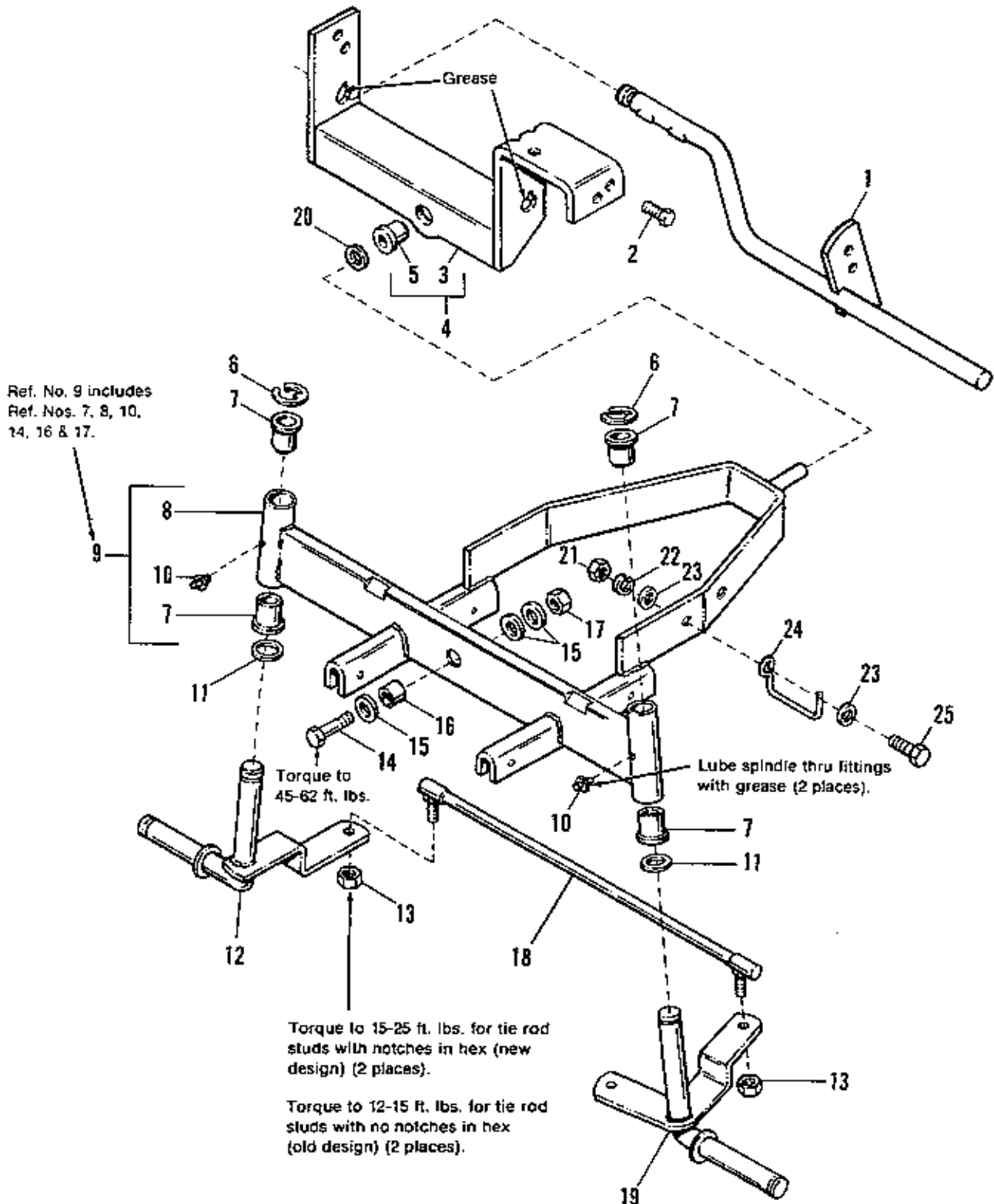
Mount support (Ref. No. 33) using front hole.

NOTE: Use standard hardware torque spec. chart unless otherwise noted.

## Frame Group

**Simplicity**

Rel. No.	Part No.	Qty.	Description
1	1654707	1	BRACE, Seat
2	924856	6	SCREW, Taptite, 5/16-18 x 1/2
3	1671749	1	SUPPORT, Axle Wrapper
4	1655591	1	BAR, Draw
5	921210	3	CAPSCREW, Hex, 3/8-16 x 1
6	916965	10	LOCKWASHER, 3/8
7	916950	10	NUT, Hex, 3/8-16
8	921965	6	CAPSCREW, Hex, 3/8-16 x 3/4
9	172038	1	GRIP, Handle
10	1673204	1	HANDLE, Lift
11	156116	1	WASHER
12	921977	1	CAPSCREW, Hex, 5/16-18 x 1-1/4
13	122186	1	CLAMP
14	936517	1	CAPSCREW, Hex Washer Hd., 1/4-20 x 5/8
15	1668970	1	PLATE, Adaptor
16	1673911	1	SPRING, Extension (Used on 1690840 after serial no. 3329 and 1690909 after serial no. 2607.)
17	1656754	1	BAR, Support
18	1656755	1	ARM, Support
19	921959	2	CAPSCREW, Hex, 1/4-20 x 5/8
20	1654783	1	SUPPORT, Clutch
21	916964	4	LOCKWASHER, 1/4
22	916622	4	NUT, Hex, 1/4-20
23	1667885	1	LEVER ASSY., Clutch PTO (Used on 1690840 before serial no. 3330 and on 1690909 before serial no. 2608 and on all 1690843.)
	1673910	1	LEVER ASSY., Clutch, PTO (Used on 1690840 after serial no. 3329 and on 1690909 after serial no. 2607.)
24	176934	1	GRIP, Handle
25	1674141	2	FOOTREST
26	921332	14	CAPSCREW, Hex, 5/16-18 x 3/4
27	917356	20	LOCKWASHER, 5/16
28	917372	20	NUT, Hex, 5/16-18
29	1664847	4	SCREW, Taptite, 5/16-18 x 3/4
30	1655076	2	BRACE, Axle Support
31	1664034	1	SUPPORT, Axle
32	919381	1	WASHER, Plain, 11/32-1 x 10 Ga.
33	1665803	1	SUPPORT
34	1672118	1	STOP, Belt
35	1665812	1	STOP, Belt
36	917377	2	WASHER, 1/4
37	921333	1	CAPSCREW, Hex Hd., 5/16-18 x 1
38	1658791	1	SUPPORT
39	1674420	1	FRAME
40	1672075	2	LATCH ASSY.
41	920562	2	CARRIAGE BOLT, 5/16-18 x 3/4
42	917642	2	WASHER, Plain, 5/16
43	925003	4	SCREW, Taptite, 1/4-20 x 1/2
44	923325	2	CAPSCREW, Hex, 5/16-18 x 7/8
45	927429	2	SCREW, Taptite, 1/4-20 x 5/8 (Used on 1690840 after serial no. 3329 and 1690909 after serial no. 2607.)
46	158399	1	RING, Retaining (Used on 1690840 after serial no. 3329 and 1690909 after serial no. 2607.)



**NOTE:** Use standard hardware torque spec. chart unless otherwise noted.

## Front Axle Group

Ref. No.	Part No.	Qty.	Description
1	1665864	1	LEVER ASSY., Brake
2	1664847	5	SCREW, Taplite, 5/16-18 x 3/4
3		1	SUPPORT ASSY., Axle, Rear (See Ref. No. 4)
4	1665601	1	SUPPORT ASSY., Rear w/Bushing
5	1663114	1	BUSHING
6	927794	2	E-RING, Ext., 3/4
7	176440	4	BUSHING
8		1	AXLE SUB ASSY. (See Ref. No. 9)
9	1671547	1	AXLE ASSY., Front
10	921133	2	FITTING, Lube, Drive Type
11	108181	2	WASHER
12	1665079	1	SPINDLE ASSY., R.H. (4208 only)
	1673325	1	SPINDLE ASSY., R.H. (4211 only)
13	1668927	2	LOCKNUT, Hex, 3/8-24 (Gr. 8)
14	921525	1	CAPSCREW, Hex, 1/2-13 x 1-3/4 (Gr. 8)
15	926192	3	WASHER, 9/16
16	1671260	1	SPACER
17	930648	1	LOCKNUT, Hex, 1/2-13
18	1667247	1	TIE ROD ASSY.
19	*1673637	1	SPINDLE ASSY., L.H. (4208)
	**1673638	1	SPINDLE ASSY., L.H. (4211)
	***1665080	1	SPINDLE ASSY., L.H. (4208)
	****1673324	1	SPINDLE ASSY., L.H. (4211)
20	919387	1	WASHER, 5/8
21	917372	1	NUT, Hex, 5/16-18
22	917356	1	LOCKWASHER, 5/16
23	917642	2	WASHER, 5/16
24	1668147	1	GUIDE, Drag Link
25	921333	1	CAPSCREW, Hex Hd., 5/16-18 x 1

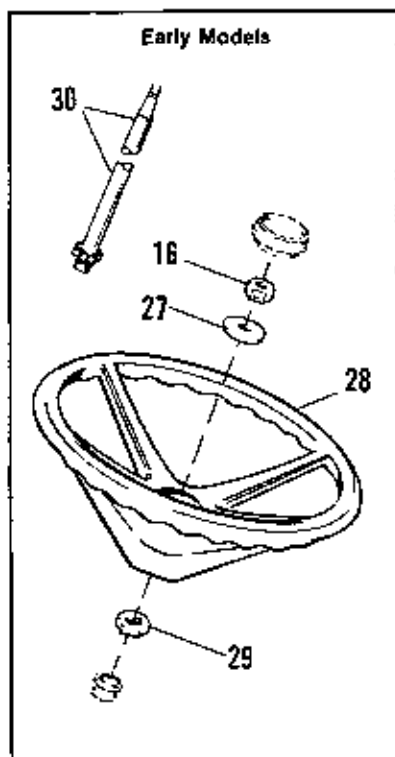
\*Used on 1690840 on serial nos. 1326 through 3320.

\*\*Used on 1690843 after serial no. 1498.

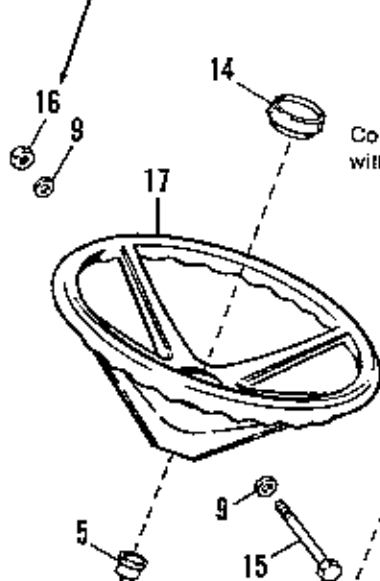
\*\*\*Used on 1690840 before serial no. 1327 and after serial no. 3319.

\*\*\*\*Used on 1690843 before serial no. 1499 and 1690840 after serial no. 3319 and on all 1690909.

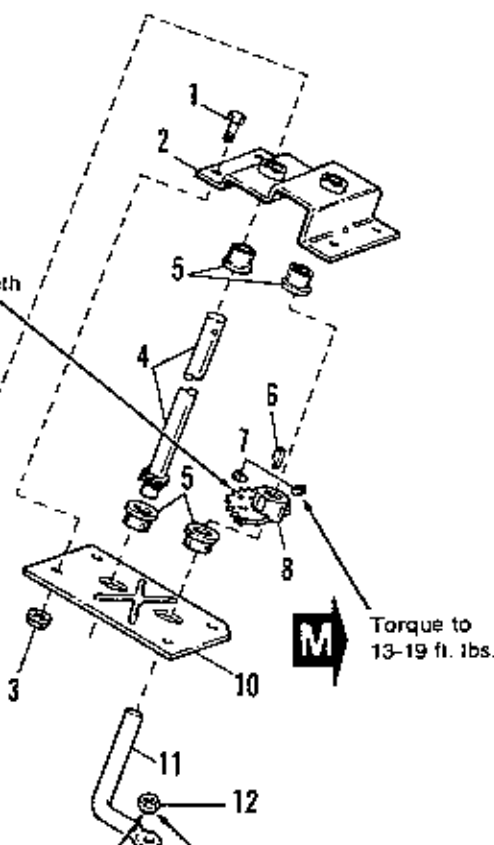
NOTE: Use standard hardware torque spec. chart unless otherwise noted.



Torque to 10 ft. lbs.



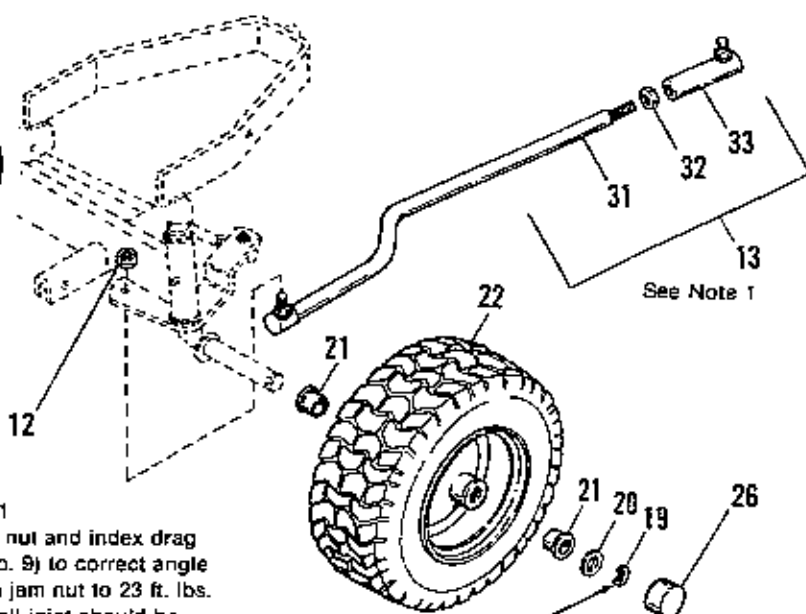
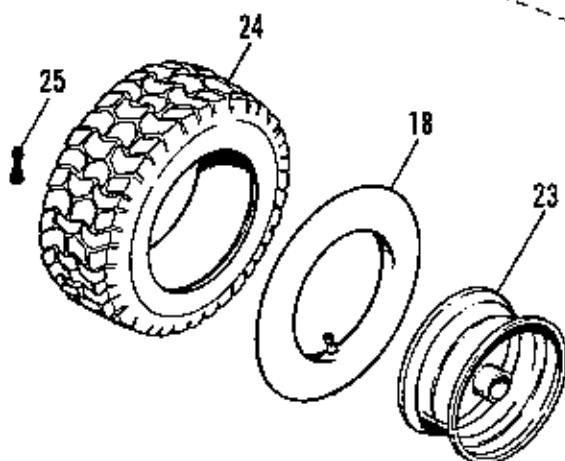
Coat gear teeth with grease.



Torque to 13-19 ft. lbs.

Torque to 20-30 ft. lbs. (2 places) for drag link studs with a notch in hex (new design).

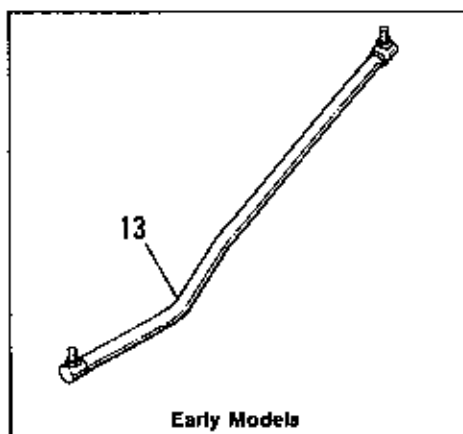
Torque to 11-16 ft. lbs. (2 places) for drag link studs with no notch in hex (old design).



See Note 1

**NOTE NO. 1**  
Loosen jam nut and index drag link (Ref. No. 9) to correct angle then tighten jam nut to 23 ft. lbs. Fitting on ball joint should be in line with ball joint.

Retaining ring must be properly seated in groove.





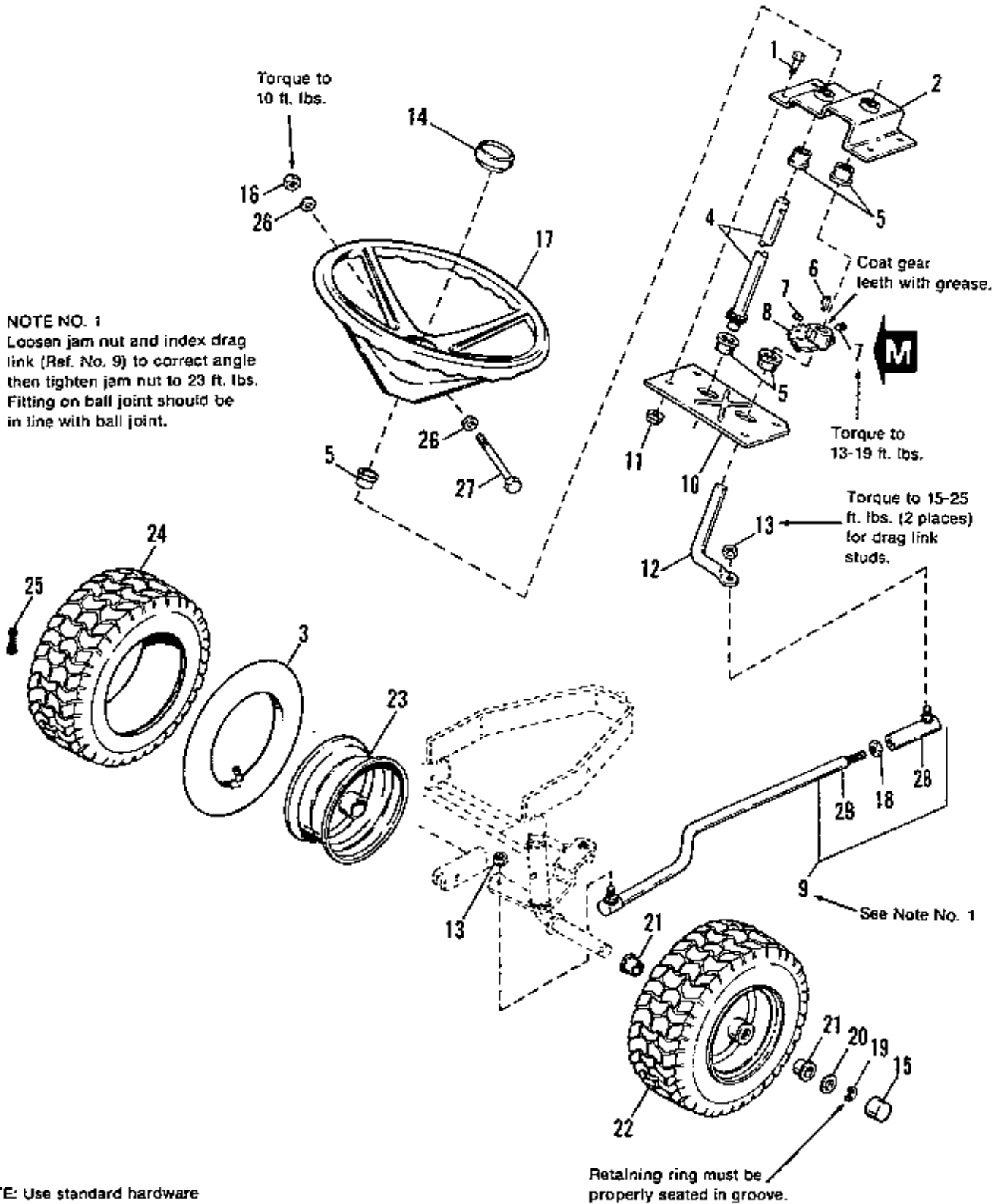
Ref. No.	Part No.	Qty.	Description
1	921332	4	CAPSCREW, 5/16-18 x 3/4
2	1667513	1	TOP PLATE, Steering
3	935048	4	LOCKNUT, Flange Whiz, 5/16-18
4	*1673009	1	SHAFT ASSY, Steering
5	176440	5	BUSHING
6	1667622	1	KEY
7	928721	2	SETSCREW, 5/16-18 x 1/2, Gr. 8
8	1685168	1	GEAR, Steering
9	*919326	2	WASHER, Plain, 5/16
10	1652743	1	BASE PLATE, Steering
11	1673635	1	ROD, Steering (Used on Mfg. No. 1690840 from serial no. 1327 thru 3319; and on Mfg. No. 1690843 after serial no. 1498.)
	1657248	1	ROD, Steering (Used on Mfg. No. 1690840 before serial no. 1327 and on Mfg. No. 1690843 before serial no. 1499.)
	1674076	1	ROD, Steering (Used on Mfg. No. 1690840 after serial no. 3319.)
12	1668927	2	LOCKNUT, Center, 3/8-24
13	1667249	1	LINK, Drag (Used on all Mfg. No. 1690843, and on 1690840 before serial no. 3320) (One piece assy.)
	1674143	1	LINK ASSY, Drag (Used on all Mfg. No. 1690840 after serial no. 3319) (Incl. Ref. Nos. 32, 32, 33)
14	1657017	1	CAP, Steering Wheel
15	*925690	1	BOLT, Hex, 5/16-18 x 3-1/2
16	923362	1	LOCKNUT, Hex, 5/16-18
17	*1670989	1	WHEEL, Steering
18	1664090	1	TUBE (Service Only See Note Below)
19	927794	2	"E" RING, Ext., 3/4
20	1673352	2	WASHER
21	156316	4	BEARING
22	1651787	2	WHEEL & TIRE ASSY., 13 x 5.00-6 (Used on Mfg. No. 1690840)
	1653617	2	WHEEL & TIRE ASSY., 15 x 6.00-6 (Used on Mfg. No. 1690843)
23	1651774	2	WHEEL, w/o Bearings (Used on Mfg. No. 1690840)
	1653615	2	WHEEL, w/o Bearings (Used on Mfg. No. 1690843)
24	1651786	2	TIRE, 13 x 5.00-6, Tubeless Turf Tread (Used on Mfg. No. 1690840)
	1653618	2	TIRE, 15 x 6.00-6, Carlisle (Used on Mfg. No. 1690843)
	1658885	2	TIRE, 15 x 6.00-6, Goodyear (Used on Mfg. No. 1690843)
25	172353	2	STEM, Valve
26	1673333	2	CAP, Hub, Threaded
27	**177649	1	WASHER, Compression
28	**1685187	1	WHEEL, Steering (Includes Ref. No. 29)
29	**1667574	1	WASHER, Hex
30	**1657003	1	SHAFT, Steering
31		1	LINK, Drag (Not serviced separately, see Ref. No. 13)
32	918403	1	NUT, Jam 3/8-24 UNF-2B
33	1669567	1	BALL JOINT ASSY.

NOTE: *Simplicity* tire sealant can be used in place of tubes. See inside front cover.

\*Used on Mfg. No. 1690840 after serial no. 1395 and on Mfg. No. 1690843 after serial no. 1823.

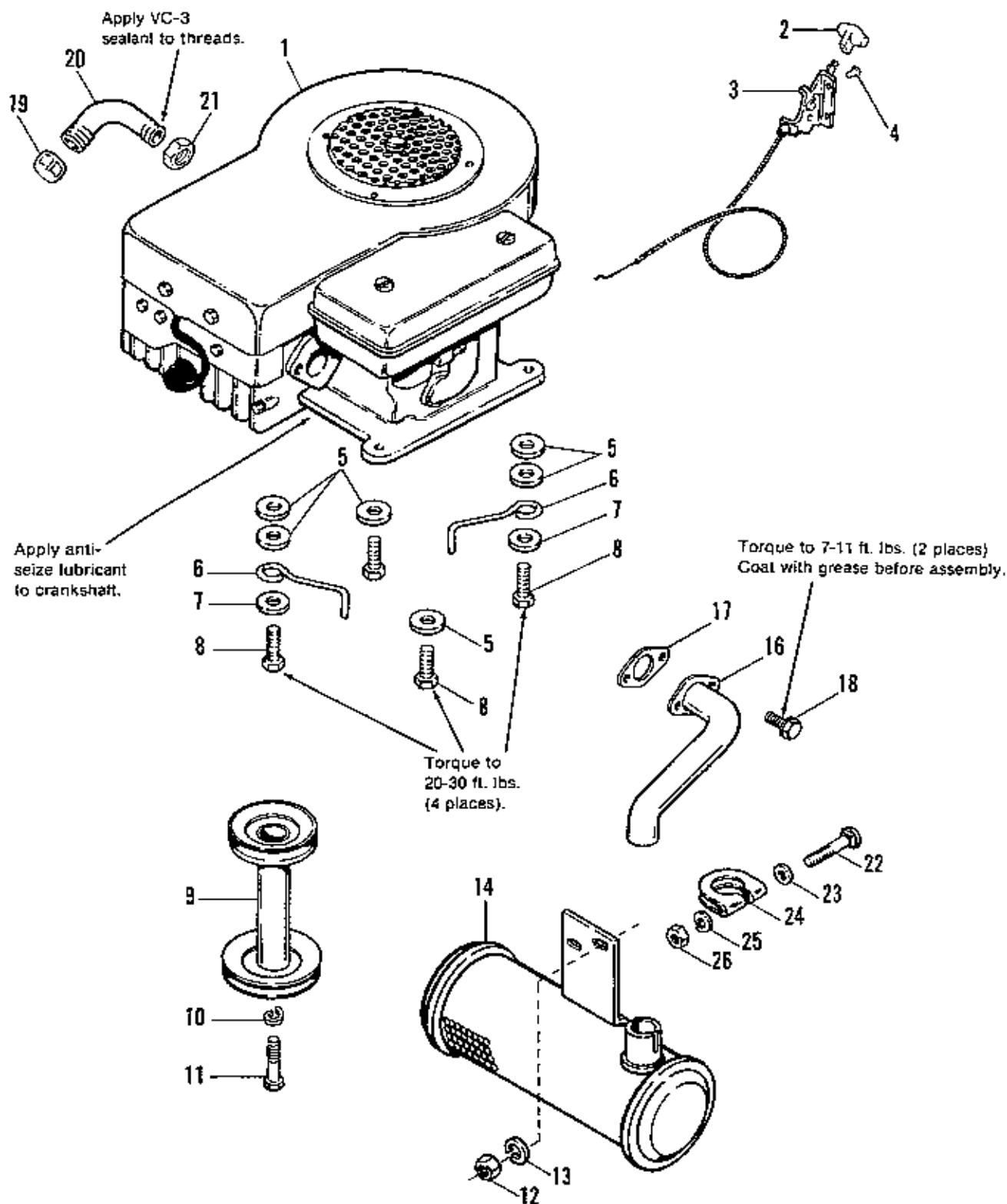
\*\*Used on Mfg. No. 1690840 before serial no. 1396 and on Mfg. No. 1690843 before serial no. 1824.

A-51



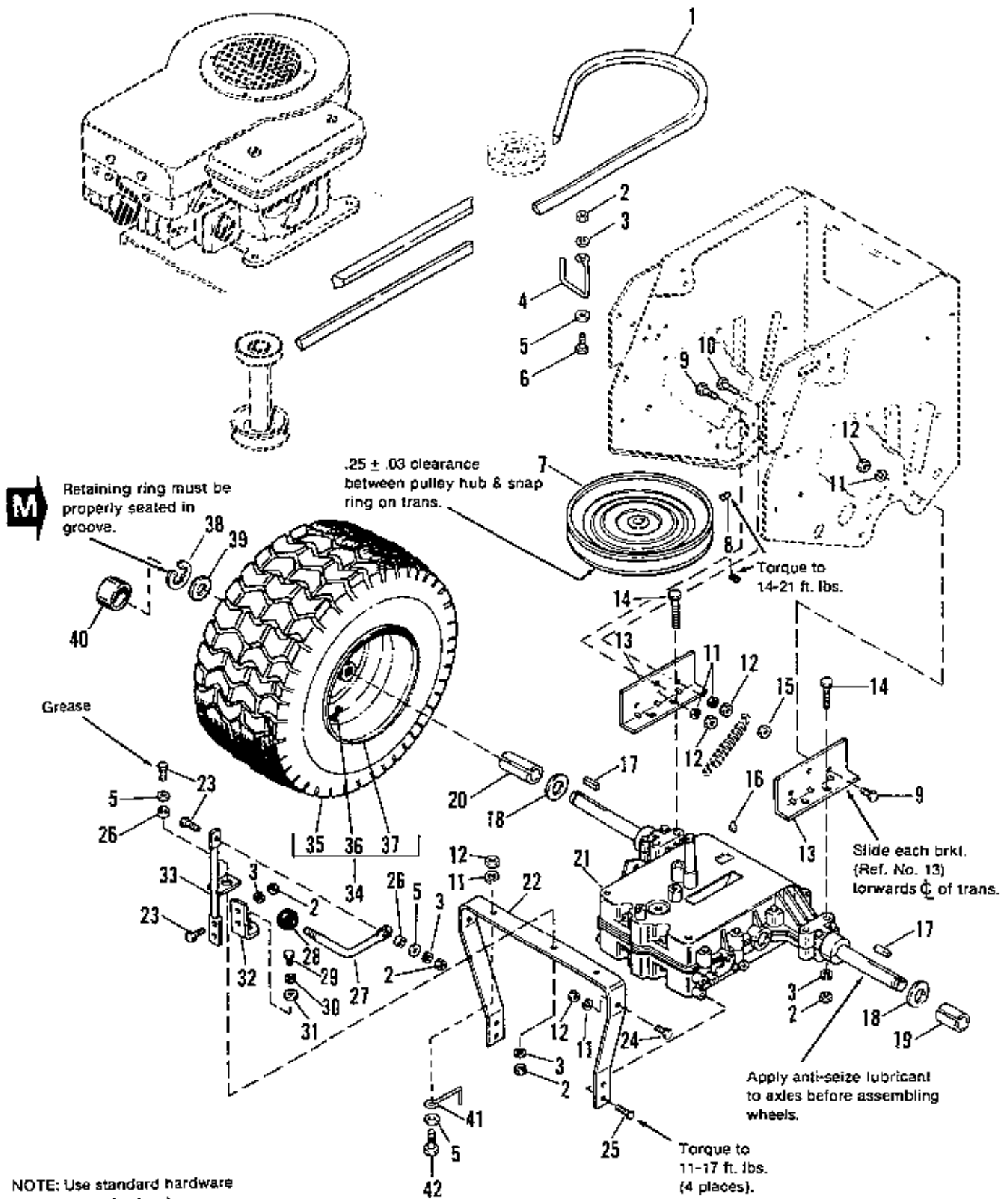
Ref. No.	Part No.	Qty.	Description
1	921332	4	CAPSCREW, 5/16-18 x 3/4
2	1667513	1	TOP PLATE, Steering
3	1664090	1	TUBE (For Service Only)
4	1674140	1	SHAFT ASSY., Steering
5	176440	5	BUSHING
6	1667622	1	KEY
7	928721	2	SETSCREW, 5/16-18 x 1/2, Gr. 8
8	1675388	1	GEAR, Steering
9	1674143	1	LINK ASSY., Drag
10	1652743	1	BASE PLATE, Steering
11	935048	4	LOCKNUT, Flange, Whiz, 5/16-18
12	1674076	1	ROD, Steering
13	1668927	2	LOCKNUT, Center, 3/8-24
14	1657017	1	CAP, Steering Wheel
15	1673333	2	CAP, Hub, Threaded
16	923362	1	LOCKNUT, Hex. 5/16-18
17	1670989	1	WHEEL, Steering
18	918403	1	NUT, Jam, 3/8-24
19	927794	2	"E" RING, Ext., 3/4
20	1673352	2	WASHER
21	156316	4	BEARING
22	1653617	2	WHEEL & TIRE ASSY., 15 x 6.00-6
23	1653615	2	WHEEL, w/o Bearings
24	1653618	2	TIRE (Carlisle)
25	172353	2	STEM, Valve
26	919326	2	WASHER, Plain, 5/16
27	925690	2	BOLT, Hex, 5/16-18 x 3-1/2
28	1669567	1	BALL JOINT ASSY.
29		1	LINK, Drag (Not Serviced Separately. See Ref. No. 9)

**NOTE:** *Simplicity* Pneumatic Tire Sealant can be used in place of tubes to stop rim leaks and fill small punctures. See inside front cover for part numbers of tubes and cases available at your *Simplicity* dealer.



NOTE: Use standard hardware torque spec. chart unless otherwise noted.

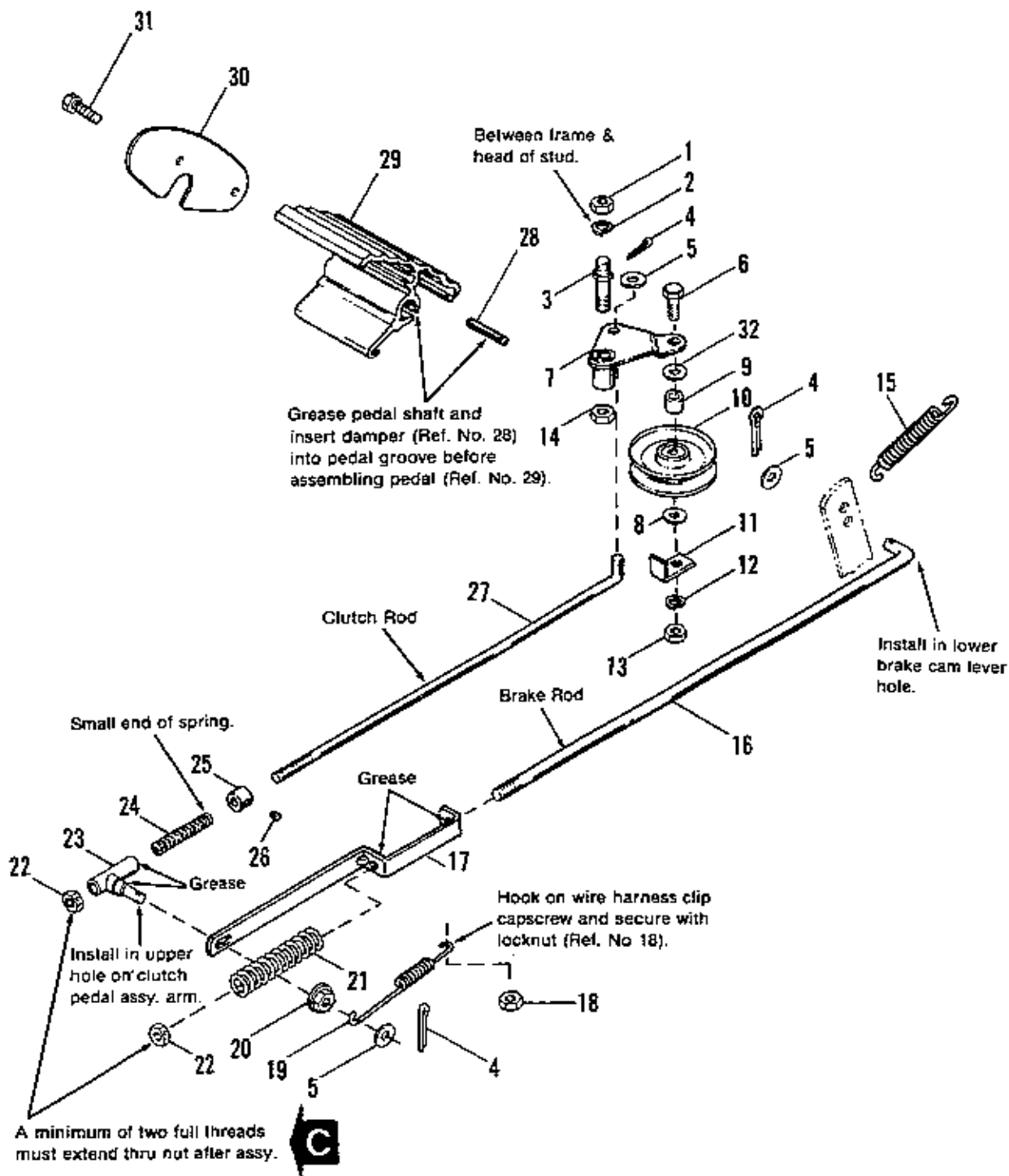
Ref. No.	Part No.	Qty.	Description
1		1	ENGINE, 8 H.P. (1690840 only)
		1	ENGINE, 11 H.P. (1690843, 1690909)
2	1656099	1	KNOB, Throttle
3	1657272	1	CONTROL ASSY., Throttle
4	924939	2	RIVET, Pop, 1/4
5	924356	6	WASHER, Plain, 3/8
6	172844	2	STOP, Belt
7	917378	2	WASHER, 3/8
8	930598	4	SCREW, Taptite, 3/8-16 x 1-1/2
9	1665272	1	PULLEY ASSY., Engine
10	918199	1	LOCKWASHER, 7/16
11	928038	1	CAPSCREW, Hex, 7/16-20 x 1-1/4
12	917372	2	NUT, Hex, 5/16-18 (1690843 & 1690909)
13	917356	2	LOCKWASHER, 5/16 (1690843 only)
14	1655848	1	MUFFLER, (1690843 & 1690909)
15	931893	1	CLAMP ASSY., Exhaust (1690843 only)
16	1655860	1	PIPE, Exhaust (1690843 & 1690909)
17	1650670	1	GASKET, Muffler (1690843 & 1690909)
18	930591	2	SCREW, Whizlock, 5/16-18 x 3/4 (1690843 & 1690909)
19	1667346	1	CAP, Pipe
20	1655405	1	PIPE, Oil Drain
21	932849	1	LOCKNUT, Conduit (1690909 only)
22	931342	1	BOLT, Carriage 5/16-18 x 3-2//4 Gr. 5 (1690909 only)
23	918642	1	WASHER, 5/16 (1690909 only)
24	1676183	1	CLAMP (1690909 only)
25	917356	1	LOCKWASHER, 5/16 (1690909 only)
26	917372	1	NUT, Hex, 5/16-18 (1690909 only)



Ref. No.	Part No.	Qty.	Description
1	1666698	1	"V" BELT
2	917372	9	NUT, Hex, 5/16-18
3	917356	9	LOCKWASHER, 5/16
4	1666709	1	STOP, Belt
5	917642	3	WASHER, 5/16
6	921333	1	CAPSCREW, Hex, 5/16-18 x 1
7	1666693	1	PULLEY ASSY., Transmission
8	930540	2	SETSCREW, 5/16-18 x 5/8
9	921965	3	CAPSCREW, Hex, 3/8-16 x 3/4
10	920415	1	CAPSCREW, Hex, 3/8-16 x 1-1/4
11	916965	8	LOCKWASHER, 3/8
12	916950	8	LOCKNUT, Hex, 3/8-16
13	1666632	2	SUPPORT, Transmission, Rear
14	921719	4	CAPSCREW, Hex, 5/16-18 x 2-1/4
15	930651	1	LOCKNUT, Hex, 3/8-16
16	905123	1	KEY, Woodruff, #9
17	8221042	2	KEY, 3/16 x 3/16 x 1-1/2
18	108181	2	WASHER, 15 Ga.
19	1667191	1	SPACER
20	1667192	1	SPACER
*21		1	TRANSAXLE, 5 Speed, Peerless
22	1666631	1	SUPPORT, Transmission, Front
23	923325	4	CAPSCREW, Hex, 5/16-18 x 7/8
24	921966	4	CAPSCREW, Hex, 3/8-16 x 7/8
25	930601	4	SCREW, Taptite, 5/16-18 x 5/8
26	1666697	2	SPACER
27	1666641	1	ROD, Shift
28	8021050	1	KNOB, Ball, Shift
29	922234	1	CAPSCREW, Hex, 1/4-28 x 5/8
30	916964	1	LOCKWASHER, 1/4
31	916955	1	WASHER, Plain, 3/16
32	1666638	1	LINK, Shift, Lower
33	1666639	1	SHIFT LINK ASSY., Upper
34	1673244	2	WHEEL & TIRE ASSY., 18 x 8-1/2-8
35	1655916	2	TIRE, 18 x 8-1/2-8, Cartisle
36	172353	2	VALVE STEM & CAP
37	1673245	2	WHEEL
38	927794	2	E-RING
39	108139	2	WASHER
40	1673333	2	CAP, Hub, Threaded
41	158499	2	BELT STOP (Used on 1690840 & 1690909)
42	921210	2	CAPSCREW, Hex 3/8-16 x 1

\*NOTE: See an authorized Tecumseh dealer for parts and service; Peerless parts are not available thru *Simplicity*, however, for customer convenience, an exploded view of the Peerless transmission is shown at the end of the manual.

A-750



NOTE: Use standard hardware torque spec. chart unless otherwise noted.



Ref. No.	Part No.	Qty.	Description
1	918213	1	NUT, Hex, 7/16-14
2	918199	1	LOCKWASHER, 7/16
3	157273	1	STUD
4	918447	3	PIN, Cotter, 3/32 x 3/4
5	917377	3	WASHER, 1/4
6	921969	1	CAPSCREW, 3/8-16 x 1-1/2
7	1653076	1	IDLER ASSY.
8	917642	1	WASHER, Plain, 5/16
9	1666294	1	SPACER
10	1665460	1	PULLEY ASSY.
11	106717	1	GUIDE, Belt
12	916965	1	LOCKWASHER, 3/8
13	916950	1	NUT, Hex, 3/8-16
14	924058	1	LOCKNUT, Hex, 7/16-14
15	159106	1	SPRING, Tension
16	1666656	1	ROD, Brake
17	1663138	1	GUIDE, Rod
18	923362	1	LOCKNUT, Hex, 5/16-18
19	1666759	1	SPRING, Return
20	935048	1	LOCKNUT, Hex, Flange, 5/16-18
21	1663136	1	SPRING
22	924433	2	LOCKNUT, 5/16-18
23	1657222	1	GUIDE ASSY., Rod
24	157041	1	SPRING, Compression
25	8191022	1	COLLAR, Set
26	928804	1	SETSCREW, 1/4-20 x 3/8
27	1655055	1	ROD, Clutch
28	1657322	1	DAMPER, Rubber
29	1656852	1	PEDAL, Foot
30	1656854	1	PLATE, End
31	927429	2	SCREW, Taptite, 1/4-20 x 5/8
32	922755	1	WASHER, Plain

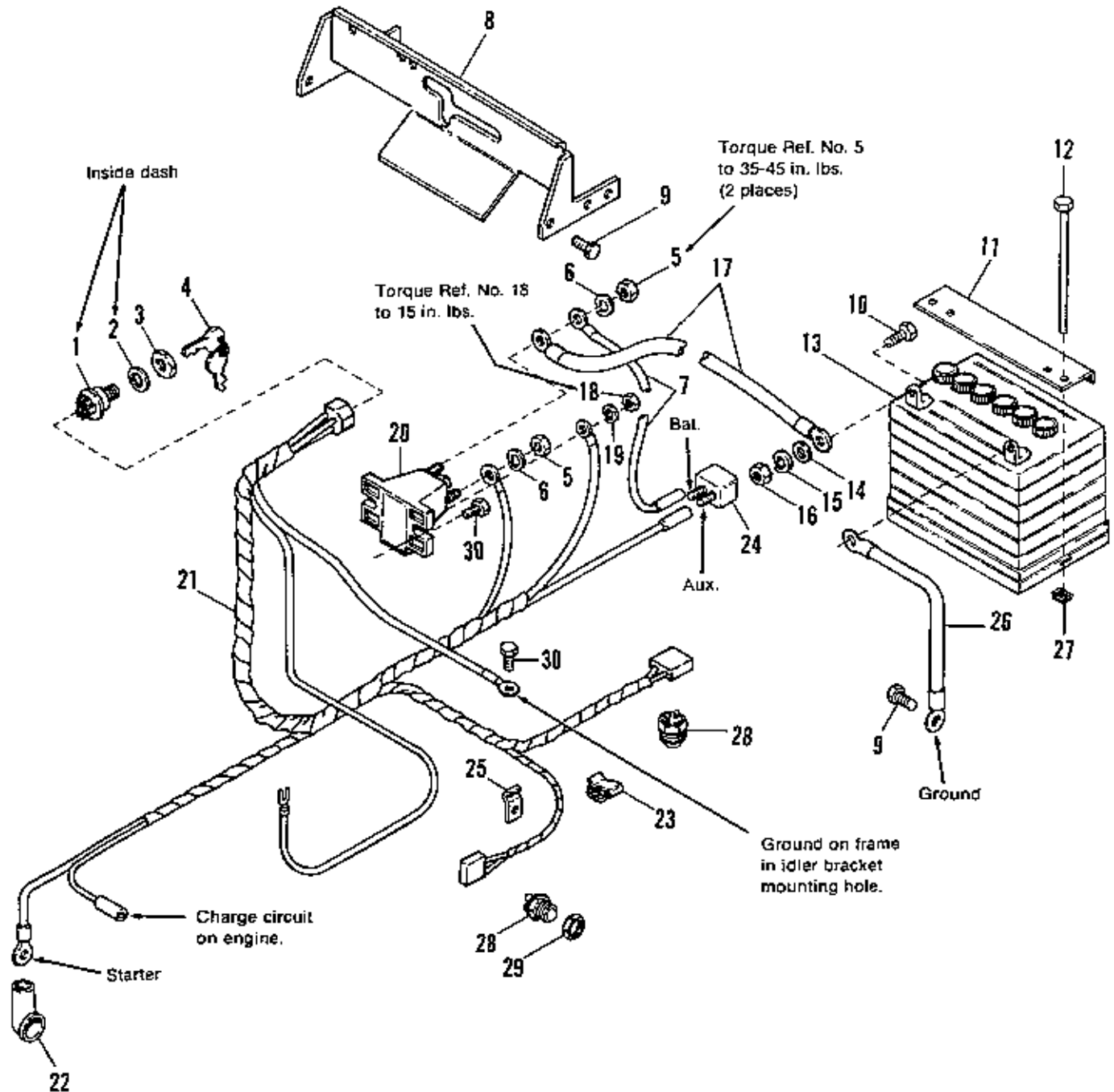
**BRAKE LINKAGE ADJUSTMENT**

1. Before adjusting brake linkage, brake cam lever must be properly adjusted on disc brake.
2. With brake clutch pedal engaged (up to the rear against stop), disc brake cam lever to the rear against stop and rod guide (Ref. No. 17) as far forward as slot will allow, adjust brake rod nut (Ref. No. 22) until 1/4" of clearance is obtained between nut and spring (Ref. No. 21).

**CLUTCH LINKAGE ADJUSTMENT**

1. With clutch pedal engaged (pedal up against stop), apply 15-20 lbs. to force pulley idler (Ref. No. 10) to firmly seat transmission drive belt. Adjust clutch rod nut (Ref. No. 22) so clearance between nut and end of rod guide is 7/8 to 1".
2. Fully depress clutch pedal and lock parking brake. Hold clutch rod (Ref. No. 27) so nut (Ref. No. 22) is against rod guide (Ref. No. 23) and position and lock set collar (Ref. No. 25) so spring (Ref. No. 24) is compressed 1/4 to 3/8".

A-656

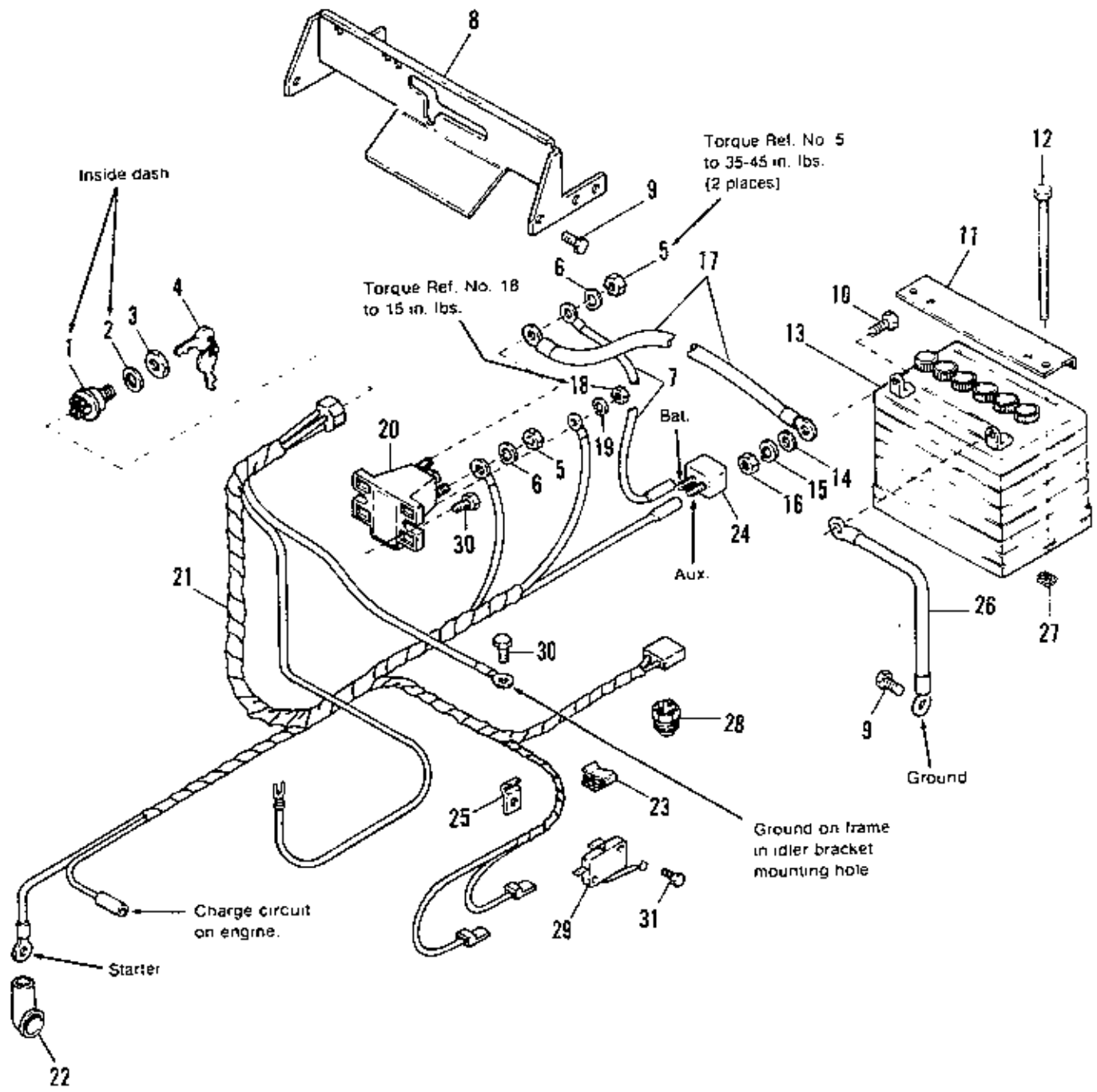


NOTE: Use standard hardware torque spec. chart unless otherwise noted.

## Electrical Group

Ref. No.	Part No.	Qty.	Description
1	178280	1	SWITCH, Ignition
2	918906	1	LOCKWASHER, Internal Tooth, 5/8
3	122234	1	NUT, 5/8-32
4	122203	1	KEYS, 2
5	917372	2	NUT, Hex, 5/16-18
6	917356	2	LOCKWASHER, 5/16
7	1665237	1	WIRE ASSY.
8	1672238	1	QUADRANT, Shift
9	927428	7	SCREW, Taptite, 1/4-20 x 3/8
10	923341	2	CAPSCREW, Hex, 1/4-20 x 3/4
11	1669831	1	CLAMP, Battery
12	936291	2	CAPSCREW, Hex, 1/4-20 x 7-1/2
13	*1685215	1	BATTERY SERVICE KIT
14	921319	2	WASHER, 1/4
15	916964	2	LOCKWASHER, 1/4
16	916622	2	NUT, Hex, 1/4-20
17	1655522	1	CABLE
18	917415	1	NUT, Hex, #10-32
19	922711	1	LOCKWASHER, Ext., #10
20	1671994	1	SOLENOID
21	1666696	1	HARNESS, Wiring
22	122023	1	COVER, Terminal
23	165073	1	CLIP, Speed
24	172163	1	CIRCUIT BREAKER
25	1668602	1	CLIP, Wire
26	122213	1	CABLE
27	926022	2	NUT, Retainer, 1/4-20
28	1654634	2	SWITCH, PTO
29	930647	1	LOCKNUT, 9/16-18
30	927429	3	SCREW, Taptite, 1/4-20 x 5/8

\*Reference No. 13 includes decal.

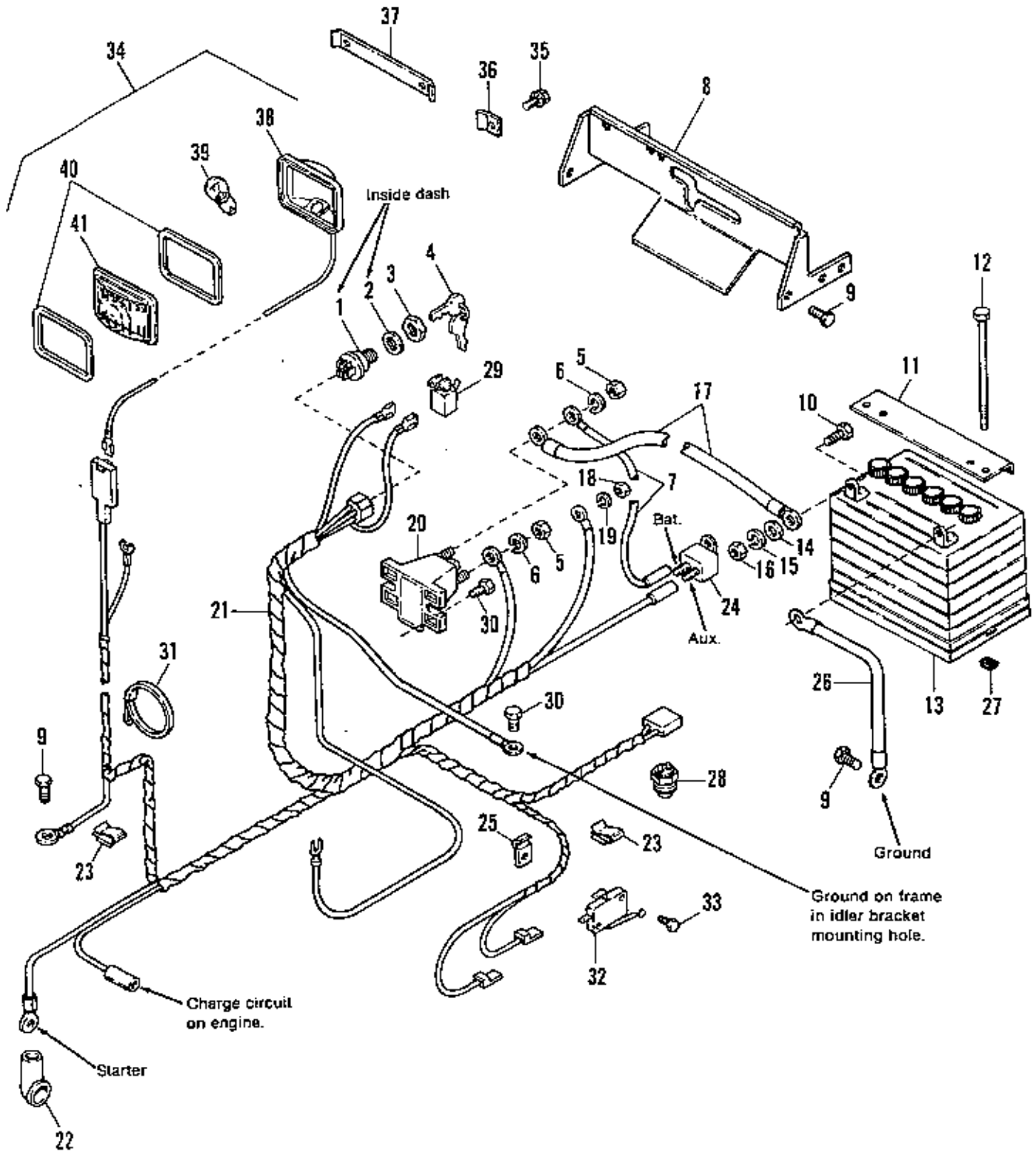


NOTE Use standard hardware torque spec. chart unless otherwise noted

## Electrical Group

Rel. No.	Part No.	Qty.	Description
1	178280	1	SWITCH, Ignition
2	918906	1	LOCKWASHER, Internal Tooth, 5/8
3	122234	1	NUT, 5/8-32
4	122203	1	KEYS, 2
5	917372	2	NUT, Hex, 5/16-18
6	917356	2	LOCKWASHER, 5/16
7	1665237	1	WIRE ASSY.
8	1672238	1	QUADRANT, Shift
9	927428	7	SCREW, Taptite, 1/4-20 x 3/8
10	923341	2	CAPSCREW, Hex, 1/4-20 x 3/4
11	1669831	1	CLAMP, Battery
12	928634	2	CAPSCREW, Hex, 1/4-20 x 7
13	*1685215	1	BATTERY SERVICE KIT
14	921319	2	WASHER, 1/4
15	916964	2	LOCKWASHER, 1/4
16	916822	2	NUT, Hex, 1/4-20
17	1603195	1	CABLE
18	917415	1	NUT, Hex, #10-32
19	922711	1	LOCKWASHER, Ext., #10
20	1671994	1	SOLENOID
21	1674226	1	HARNESS, Wiring
22	122023	1	COVER, Terminal
23	165073	1	CLIP, Speed
24	1665238	1	CIRCUIT BREAKER
25	1668602	1	CLIP, Wire
26	1603618	1	CABLE
27	926022	2	NUT, Retainer, 1/4-20
28	1654634	2	SWITCH, PTO
29	1665586	1	SWITCH, Interlock
30	925592	3	SCREW, Taptite, 1/4-20 x 3/4
31	935944	2	SCREW, Taptite, #5-40 x 3/4

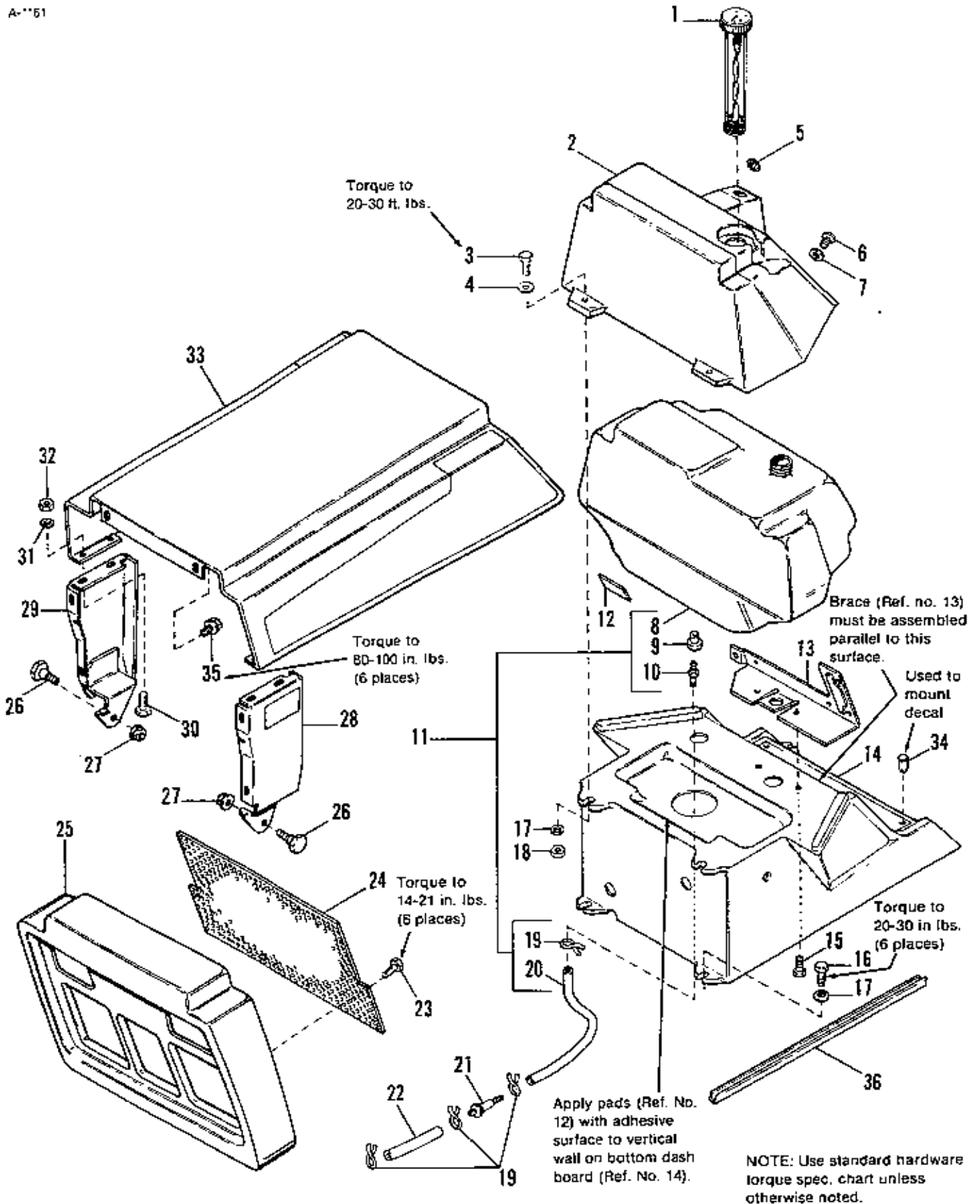
\*Reference No. 13 includes decal.



NOTE: Use standard hardware torque spec. chart unless otherwise noted.

Ref. No.	Part No.	Qty.	Description
1	178280	1	SWITCH, Ignition
2	918906	1	LOCKWASHER, Internal Tooth, 5/8
3	122234	1	NUT, 5/8-32
4	122203	1	KEYS, 2
5	917372	2	NUT, Hex, 5/16-18
6	917356	2	LOCKWASHER, 5/16
7	1665237	1	WIRE ASSY.
8	1672238	1	QUADRANT, Shift
9	927428	8	SCREW, Taptite, 1/4-20 x 3/8
10	923341	2	CAPSCREW, Hex, 1/4-20 x 3/4
11	1669831	1	CLAMP, Battery
12	928634	2	CAPSCREW, Hex, 1/4-20 x 7
13	1685215	1	BATTERY SERVICE KIT
14	921319	2	WASHER, 1/4
15	916964	2	LOCKWASHER, 1/4
16	916622	2	NUT, Hex, 1/4-20
17	1603195	1	CABLE
18	917415	1	NUT, Hex, #10-32
19	922711	1	LOCKWASHER, Ext., #10
20	1671994	1	SOLENOID
21	1675528	1	HARNESS, Wiring
22	122023	1	COVER, Terminal
23	165073	2	CLIP, Speed
24	1665238	1	CIRCUIT BREAKER
25	1668602	1	CLIP, Wire
26	1603618	1	CABLE
27	926022	2	NUT, Retainer, 1/4-20
28	1654634	1	SWITCH, PTO
29	122184	1	SWITCH ASSY.
30	925592	3	SCREW, Taptite, 1/4-20 x 3/4
31	932747	1	TIE, Cable
32	1665586	1	SWITCH, Interlock
33	935944	2	SCREW, Taptite, #5-40 x 3/4
34	1665934	2	LIGHT ASSY.
35	1664960	1	SCREW, Plastite, #10-14 x 1/2
36	1654636	2	CLIP, Headlight, Side
37	1657553	1	CLIP, Headlight, Center
38	1654664	1	REFLECTOR ASSY.
39		2	BULB #199
40	1654662	4	GASKET
41	1665933	2	LENS, Plastic, Clear

A-1151

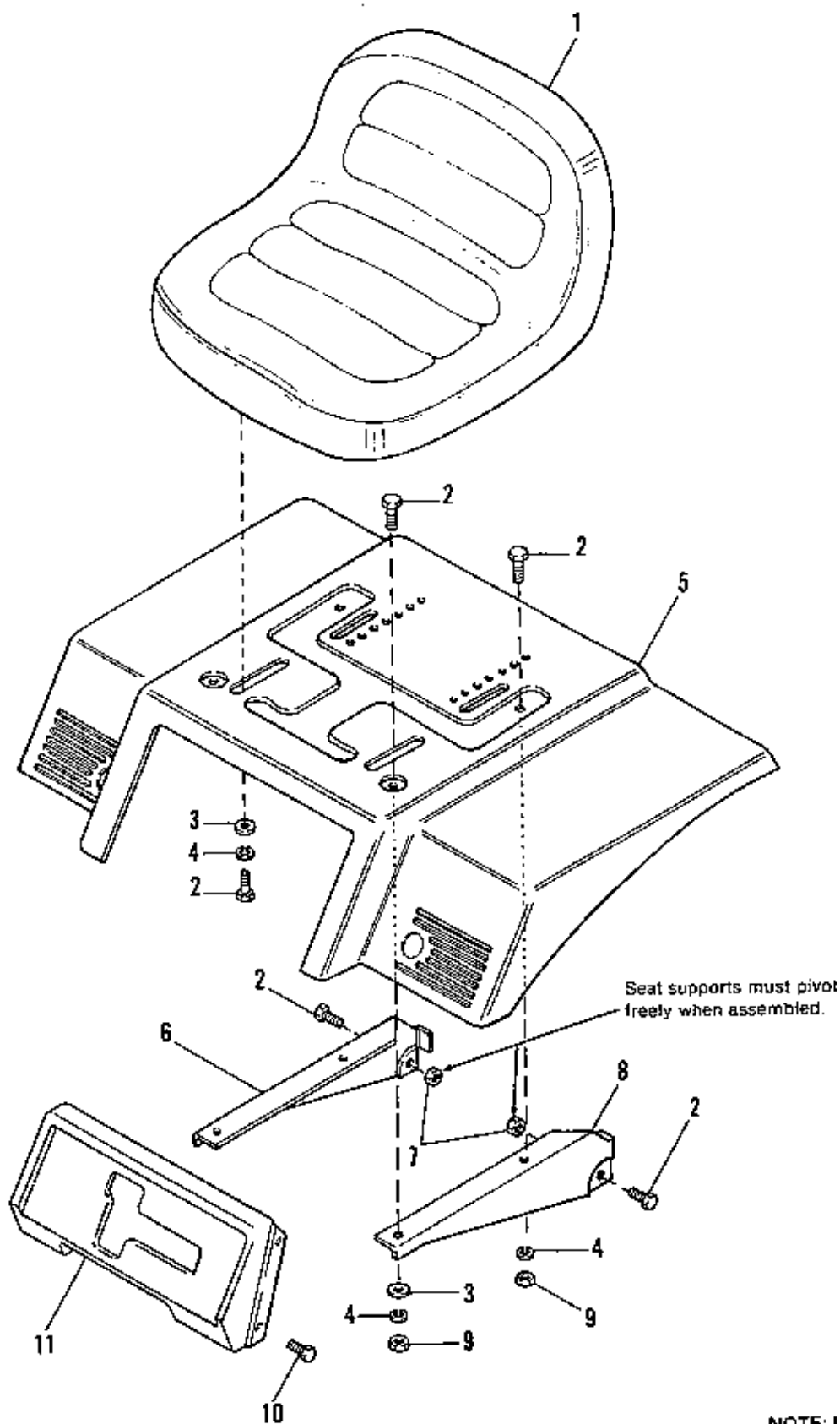




Ref. No.	Part No.	Qty.	Description
1	171252	1	CAP
2	1672630	1	DASHBOARD, Top
3	921961	2	CAPSCREW, Hex, 1/4-20 x 1-1/4
4	917377	2	WASHER, 1/4
5	928852	1	CAP, Plug (Light Switch) (1690843 only)
6	930561	2	SCREW, Taptite Phillips, 1/4-20 x 3/4
7	916955	2	WASHER, 3/16
8		1	FUEL TANK (See Ref. No. 11)
9	1654930	1	BUSHING
10	1666447	1	FITTING
11	1666490	1	TANK ASSY., Fuel
12	173335	2	PAD
13	1665301	1	BRACE
14	1668641	1	DASHBOARD, Bottom
15	925592	2	SCREW, Taptite, 1/4-20 x 3/4
16	929783	4	SCREW, Taptite, 1/4-20 x 1
17	931704	6	LOCKWASHER, Dish, 1/4
18	923358	2	LOCKNUT, Hex, 1/4-20
19	154372	4	CLAMP, Hose
20	1657575	1	HOSE, Fuel
21	173206	1	FILTER, Fuel
22	1657652	1	HOSE, Fuel (1690843 only)
23	1664960	6	SCREW, Plastite, #10-14 x 1/2
24	1656793	1	SCREEN
25	1672815	1	GRILLE
26	1656792	2	BOLT, Shoulder, 5/16-18 x 7/8
27	927557	2	LOCKNUT, Flange, Whiz, 5/16-18
28	1656787	1	PANEL ASSY., L.H.
29	1656786	1	PANEL ASSY., R.H.
30	921958	4	CAPSCREW, Hex, 1/4-20 x 1/2
31	916964	4	LOCKWASHER, 1/4
32	916622	4	NUT, Hex, 1/4-20
33	1656774	1	HOOD
34	1667248	4	CLIP, Cance
35	1672803	6	SCREW, Plastite, 1/4 x 1
36	1672123	2	EDGING, Lower Dash

\*Reference No. 11 includes Ref. No. 8, 9, 10, 19 (Qty. 1), 20.

A-53



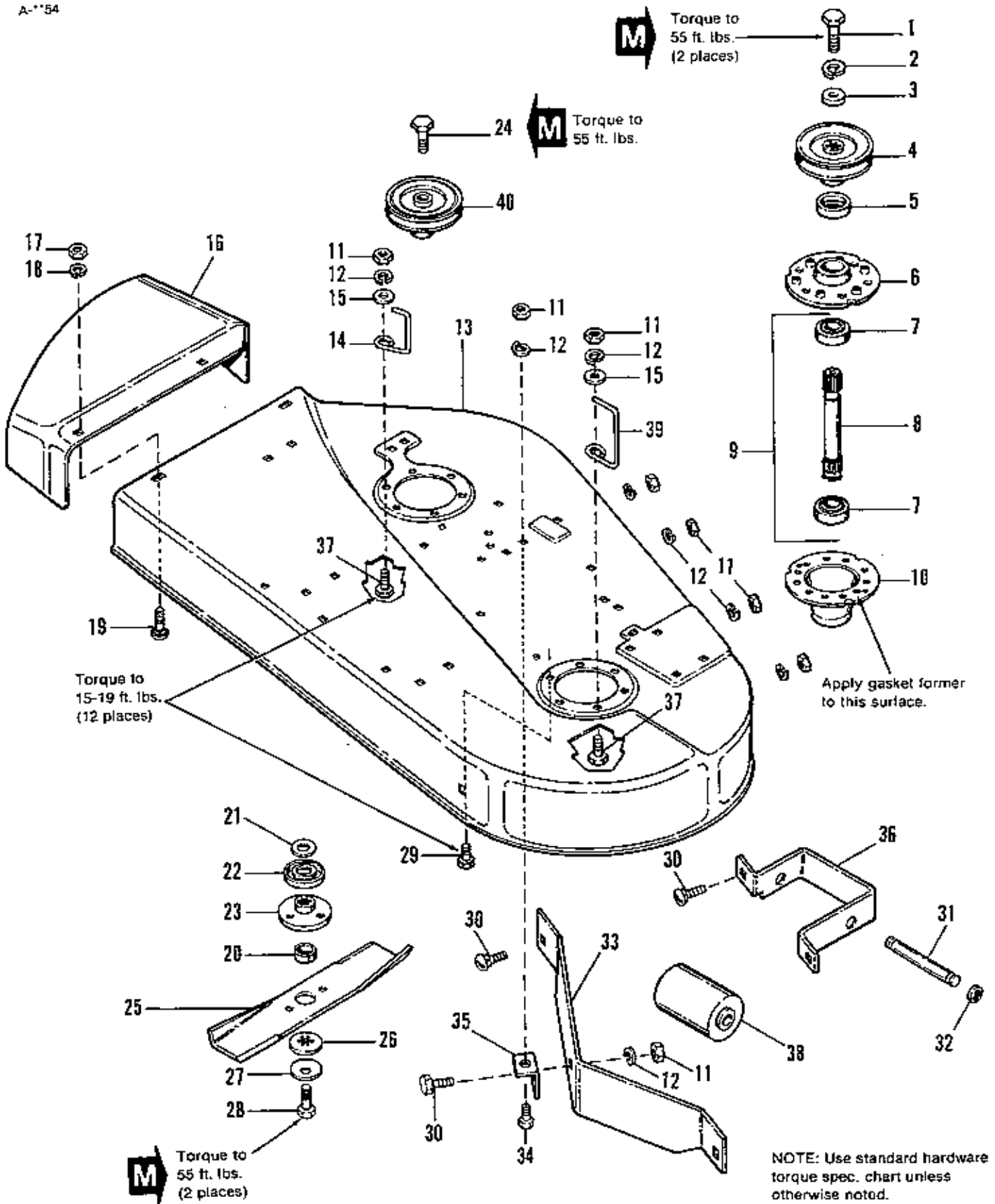
NOTE: Use standard hardware torque spec. chart unless otherwise noted.

## Seat &amp; Deck Group

---

Ref. No.	Part No.	Qty.	Description
1	1666729	1	SEAT
2	921332	10	CAPSCREW, 5/16-18 x 3/4
3	917642	4	WASHER, 5/16
4	917356	8	LOCKWASHER, 5/16
5	1669279	1	DECK, Seat
6	1654708	1	SUPPORT, Seat, R.H.
7	923362	2	NUT, Hex, 5/16-18
8	1654709	1	SUPPORT, Seat, L.H.
9	917372	4	NUT, Hex, 5/16-18
10	925003	4	SCREW, Taptite, 1/4-20 x 1/2
11	1668839	1	PANEL, Shift

A-1154



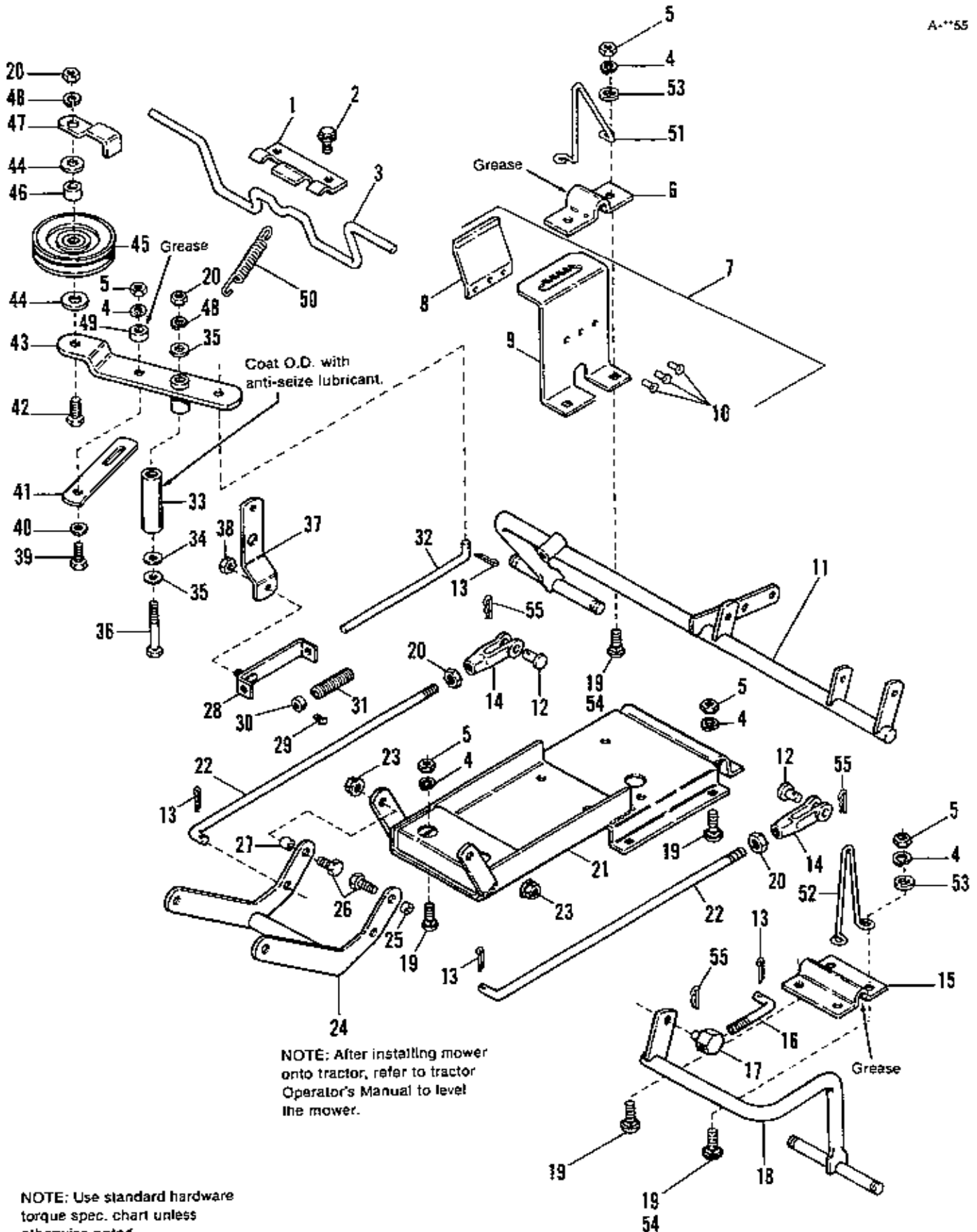
Ref. No.	Part No.	Qty.	Description
1	*930585	2	CAPSCREW, Hex Hd., 7/16-14 x 3-1/2
	**926110	2	CAPSCREW, Hex Hd., 7/16-14 x 2-3/4
2	918199	2	LOCKWASHER, 7/16
3	933263	2	WASHER, 29/64 x 1-1/4 x 1/4
4	*1673109	1	PULLEY ASSY.
	**1655839	1	PULLEY ASSY.
5	1657969	2	SHIELD, Bearing, Upper
6	1655729	2	HOUSING, Top
7	108202	4	BEARING
8	1685245	2	SHAFT, Arbor (Incl. Ref. No. 20)
9	1685251	2	SHAFT & BEARING ASSY. (Incl. Ref. Nos. 7, 8, 20)
10	1655728	2	HOUSING, Bottom
11	917372	8	NUT, Hex, Full, 5/16-18
12	917356	8	LOCKWASHER, 5/16
13	1663958	1	HOUSING, 36"
14	1657660	1	STOP, Belt
15	917642	2	WASHER, 5/16
16	1655422	1	DEFLECTOR, Mower
17	916950	2	NUT, Hex, Full, 3/8-16
18	916965	2	LOCKWASHER, 3/8
19	922110	2	BOLT, Carriage, 3/8-16 x 3/4
20	1672132	2	COLLAR, Arbor
21	1664241	2	WASHER, Shim
22	1657588	2	SHIELD, Grass
23	1655777	2	ADAPTOR, Blade
24	930584	1	CAPSCREW, Hex Hd., 7/16-14 x 2-3/4
25	1657589	2	BLADE, 36"
26	1658927	2	WASHER, Spline
27	1658916	2	WASHER, Cup
28	923491	2	CAPSCREW, Hex Hd., 7/16-14 x 1
29	1664847	11	SCREW, Hex, Wash. Hd., Taptite, 5/16-18 x 3/4
30	920562	4	BOLT, Carriage, 5/16-18 x 3/4
31	1603205	1	SHAFT, Roller, Center
32	927793	1	E-RING
33	1671577	1	BAFFLE
34	921332	2	CAPSCREW, Hex Hd., 5/16-18 x 3/4
35	1668500	1	BRACKET, Mower
36	1671592	1	BRACKET, Center, Roller
37	927477	2	SCREW, Hex Hd., Taptite, 5/16-18 x 1
38	1668513	1	ROLLER
39	***1673106	1	STOP, Belt
40	1655839	1	PULLEY ASSY.

\*Used on serial no. 2332 and higher

\*\*Used on serial no. 2331 and lower.

\*\*\*Not used on serial no. 2331 and lower.

A-55



Ref. No.	Part No.	Qty.	Description
1	1655507	1	SUPPORT, Brake
2	927428	2	SCREW, Hex, Wash. Hd., Taptite, 1/4-20 x 3/8
3	*1673110	1	ROD ASSY., Brake
	**1655425	1	ROD ASSY., Brake
4	917356	15	LOCKWASHER, 5/16
5	917372	15	NUT, Hex, Full, 5/16-18
6	1654655	1	STRAP
7	1663223	1	QUADRANT ASSY. (Includes Ref. No's. 8, 9 & 10)
8	1663222	1	SPRING, Flat
9	1663221	1	QUADRANT
10	910542	3	RIVET, Tubular, 3/16 x 5/16
11	1668099	1	SUPPORT ASSY., Roller, R.H.
12	923087	2	PIN, Clevis
13	918447	7	PIN, Cotter, 3/32 x 3/4
14	108157	2	CLEVIS, Adjusting
15	1653768	1	CLAMP, Adjusting
16	1655811	1	ROD, Bolt
17	108512	1	PIVOT
18	1668098	1	SUPPORT ASSY., Roller, L.H.
19	920562	8	BOLT, Carriage, 5/16-18 x 3/4
20	916950	4	NUT, Hex, Full, 3/8-16
21	1674012	1	SUPPORT ASSY., Mower
22	1654411	2	ROD, Height Adjustment
23	930645	2	LOCKNUT, Hex, Flange, 3/8-16
24	1674011	1	ARM ASSY., Rocker
25	118335	1	SPACER
26	920415	2	CAPSCREW, Hex Hd., 3/8-16 x 1
27	154177	1	SPACER
28	108662	1	GUIDE ASSY., Rod
29	928804	1	SETSCREW, 1/4-20 x 3/8
30	8191022	1	COLLAR, Set
31	163103	1	SPRING
32	171320	1	ROD, Clutch
33	1657242	1	SPACER
34	924356	1	WASHER
35	917378	2	WASHER, Plain, 3/8
36	928957	1	CAPSCREW, Hex Hd., 3/8-16 x 2-3/4
37	1656991	1	ARM, Pivot
38	923362	1	LOCKNUT, Hex, 5/16-18
39	921333	1	CAPSCREW, Hex Hd., 3/8-16 x 2-3/4
40	917377	1	WASHER, Plain, 1/4
41	1656998	1	LEVER, Brake
42	921971	1	CAPSCREW, Hex Hd., 3/8-16 x 1-3/4
43	1657241	1	LEVER ASSY., Clutch
44	922755	2	WASHER, Plain
45	1665460	1	PULLEY ASSY.
46	1666294	1	SPACER
47	106717	1	GUIDE, Belt
48	916965	2	LOCKWASHER, 3/8
49	165034	1	SPACER
50	159159	1	SPRING
51	1669232	1	UP-STOP, R.H.
52	1669233	1	UP-STOP, L.H.
53	917642	4	WASHER, Plain, 5/16
54	920564	6	BOLT, Carriage, 5/16-18 x 1-1/4
55	106787	3	CLIP, Hair Pin

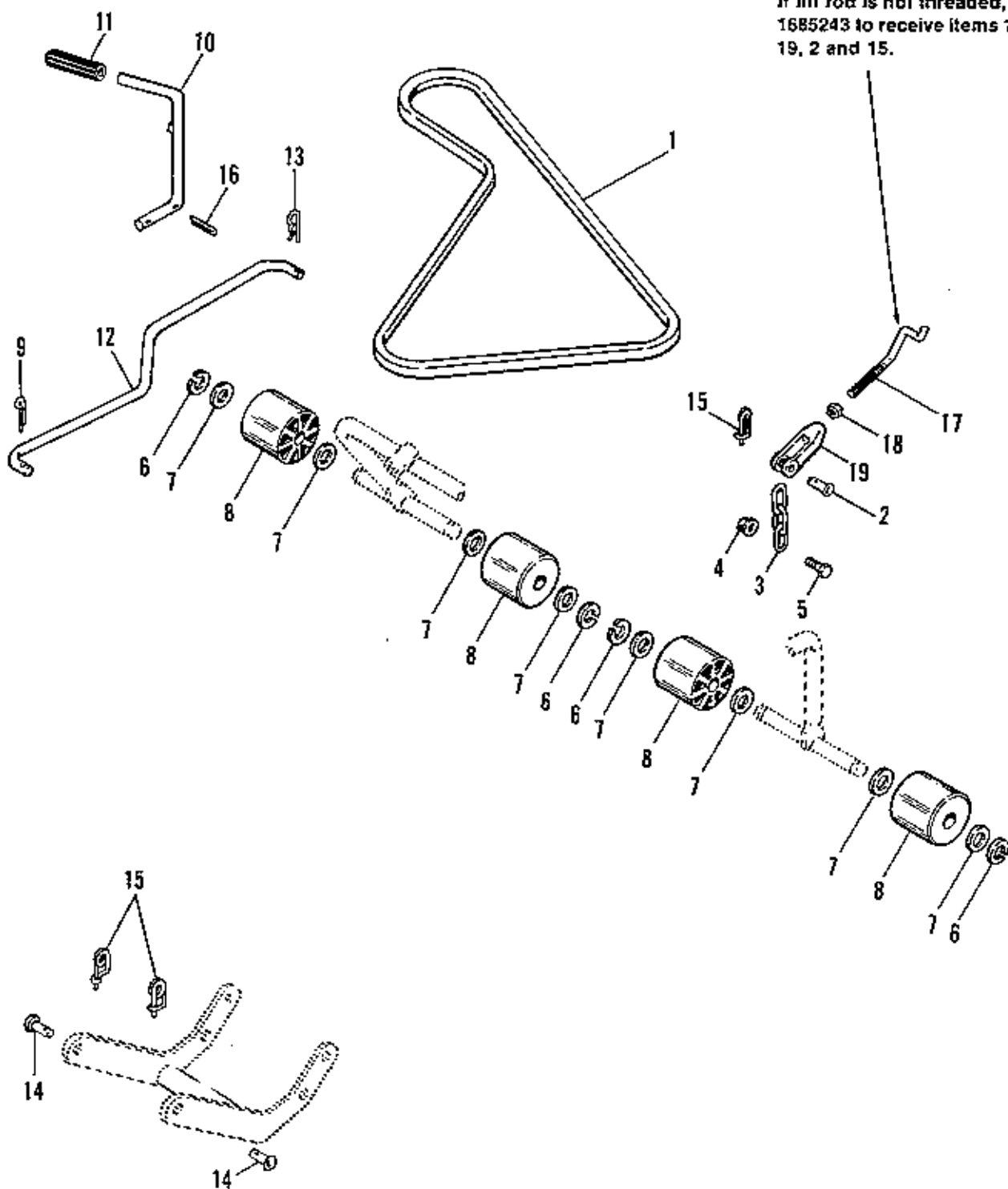
\*Used on serial no. 2332 and higher.

\*\*Used on serial no. 2331 and lower.

A-756

**NOTE**

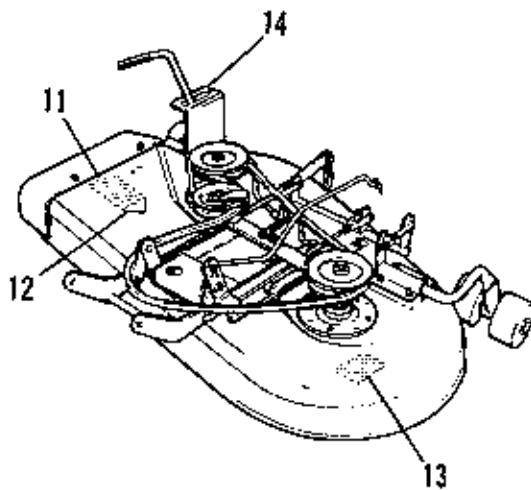
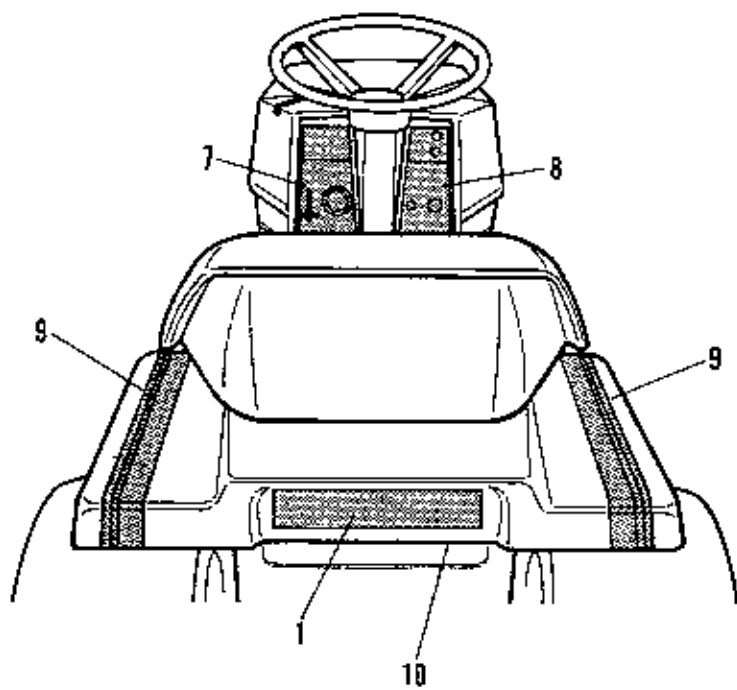
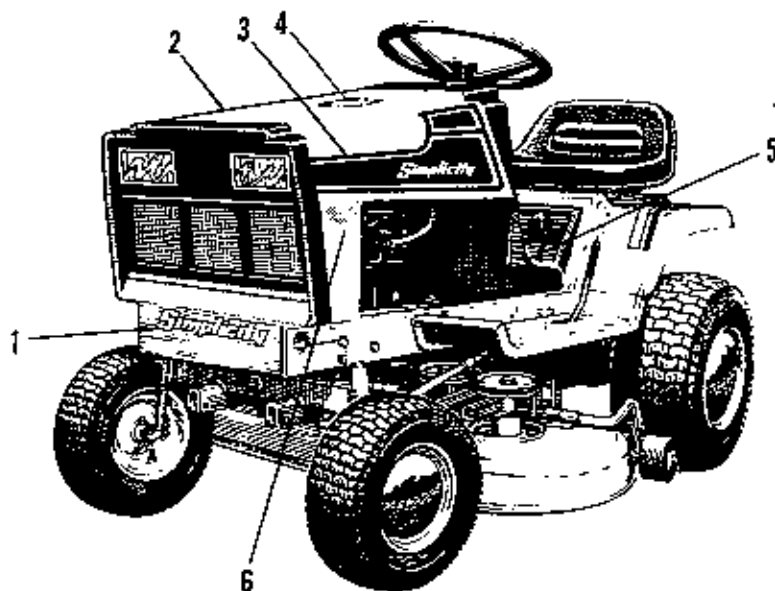
If Jill rod is not threaded, order 1685243 to receive items 17, 18, 19, 2 and 15.



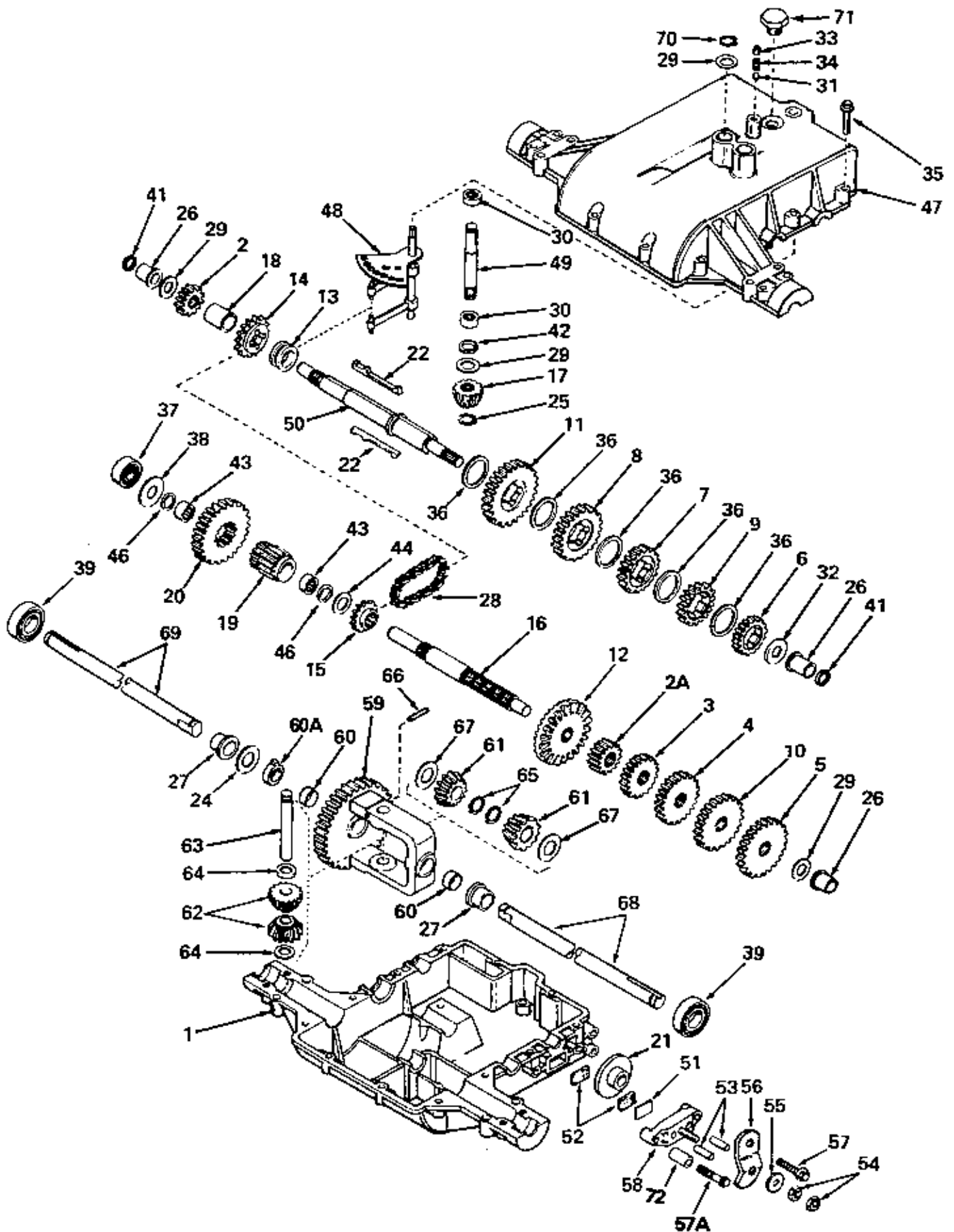
**NOTE:** Use standard hardware torque spec. chart unless otherwise noted.



Ref. No.	Part No.	Qty.	Description
1	108505	1	V-BELT, Mower Drive
2	1673574	1	PIN, Rivet
3	1656835	1	CHAIN, Lift
4	935048	1	LOCKNUT, Hex, Flange, 5/16-18
5	921333	1	CAPSCREW, Hex Hd., 5/16-18 x 1
6	153124	4	RING, Retaining
7	919387	8	WASHER, Plain, 5/8
8	1668487	4	ROLLER
9	918448	1	PIN, Cotter, 3/32 x 1
10	1656412	1	LEVER, Control
11	176933	1	GRIP, Handle
12	1668744	1	ROD, P.T.O.
13	108787	1	CLIP, Spring
14	156306	2	PIN
15	176012	3	CLIP, Pin, Safety
16	918452	2	PIN, Cotter, 1/8 x 1
17	1673576	1	ROD, Lift
18	920161	1	NUT, Jam, 5/16-18
19	1673575	1	CLEVIS



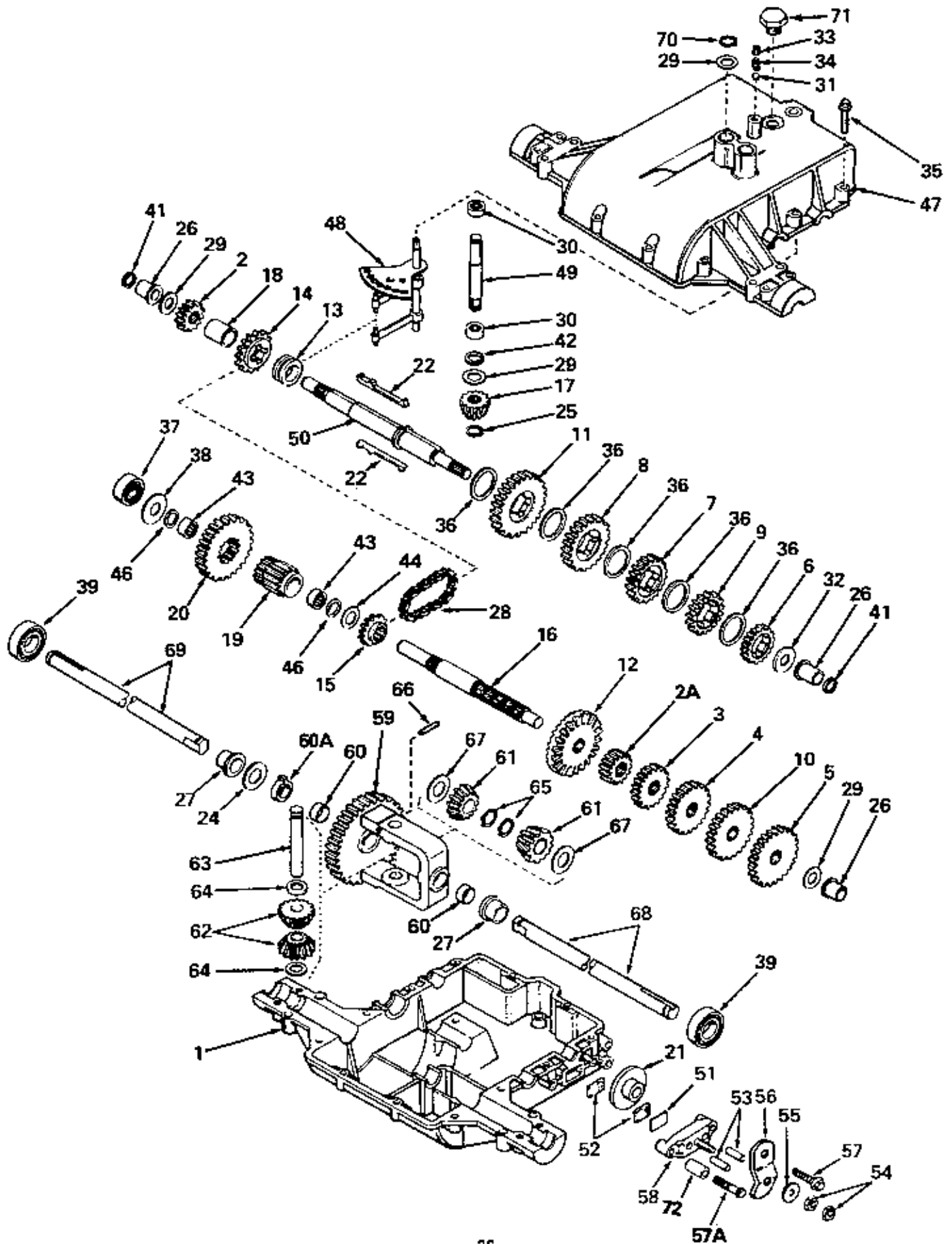
Ref. No.	Part No.	Qty.	Description
1	153186	2	DECAL, <i>Simplicity</i>
2	1671716	1	DECAL, Hood, R.H.
3	1671717	1	DECAL, Hood, L.H.
4	1666678	1	DECAL, Drive Belt
5	1671960	1	DECAL, Shift Pattern
6	1666716	2	DECAL, 4208 Electric
	1666715	2	DECAL, 4211 Electric
7	1673431	1	DECAL, Dash, L.H. Side
8	1673430	1	DECAL, Dash, R.H. Side (1690840, 1690843 only)
	1675184	1	DECAL, Dash, R.H. Side (1690909 only)
9	1657131	2	DECAL, Seat Deck
10	1670969	1	DECAL, Battery, <i>Simplicity</i>
11	1672692	1	DECAL, Warning
12		1	DECAL, OPEI
13	1672691	1	DECAL, Danger
14	1656855	1	DECAL, Mower Height



Ref. No.	Part No.	Qty.	Description
1	770071A	1	CASE, Transaxle
2	778136	1	GEAR, Spur (15 teeth)
2A	778145	1	GEAR, Spur (12 teeth)
3	778126A	1	GEAR, Spur (20 teeth)
4	778127A	1	GEAR, Spur (25 teeth)
5	778129A	1	GEAR, Spur (30 teeth)
6	778121A	1	GEAR, Spur (20 teeth)
7	778123A	1	GEAR, Spur (25 teeth)
8	778124A	1	GEAR, Spur (30 teeth)
9	778122A	1	GEAR, Spur (22 teeth)
10	778128A	1	GEAR, Spur (28 teeth)
11	778146A	1	GEAR, Spur (37 teeth)
12	778137A	1	GEAR, Bevel (42 teeth)
13	784256	1	COLLAR, Shift
14	786060	1	SPROCKET (14 teeth)
15	786061	1	SPROCKET (10 teeth)
16	776204	1	SHAFT, Counter
17	778113A	1	BEVEL PINION, Input
18	786074	1	SPACER
19	778138	1	PINION, Output
20	778139	1	GEAR, Output
21	790003	1	DISK, Brake
22	792089A	2	KEY
24	780001	1	WASHER
25	788040	1	RING, Retaining
26	780105A	3	BUSHING, Flanged
27	780118A	2	BUSHING, Flanged
28	786062	1	CHAIN, Roller (No. 41 chain, 22 links)
29	780072	4	WASHER, Thrust
30	780122	2	BEARING, Thrust
31	792077	1	BALL, Steel
32	780109	1	WASHER, Thrust
33	792078	1	SCREW, Set, 3/8-16 x 3/8
34	792079	1	SPRING
35	792073	17	SCREW, Hex Hd., Thd. Form., 1/4-20 x 1-1/4
36	780108	5	WASHER, Thrust
37	780121	2	BEARING, Ball
38	780113	1	WASHER, Flat
39	780119	2	BEARING, Ball
41	788051	2	RING, Square Cut
42	788057	1	RING, Square Cut
43	780112	2	BEARING, Needle
44	780114	1	WASHER, Flat
46	788053	2	RING, Square Cut
47	772082	1	COVER, Transaxle
48	784290	1	ROD & FORK ASSY., Shift
49	776135	1	SHAFT, Input

Reference Nos. 50 - 72 are found on the following page.

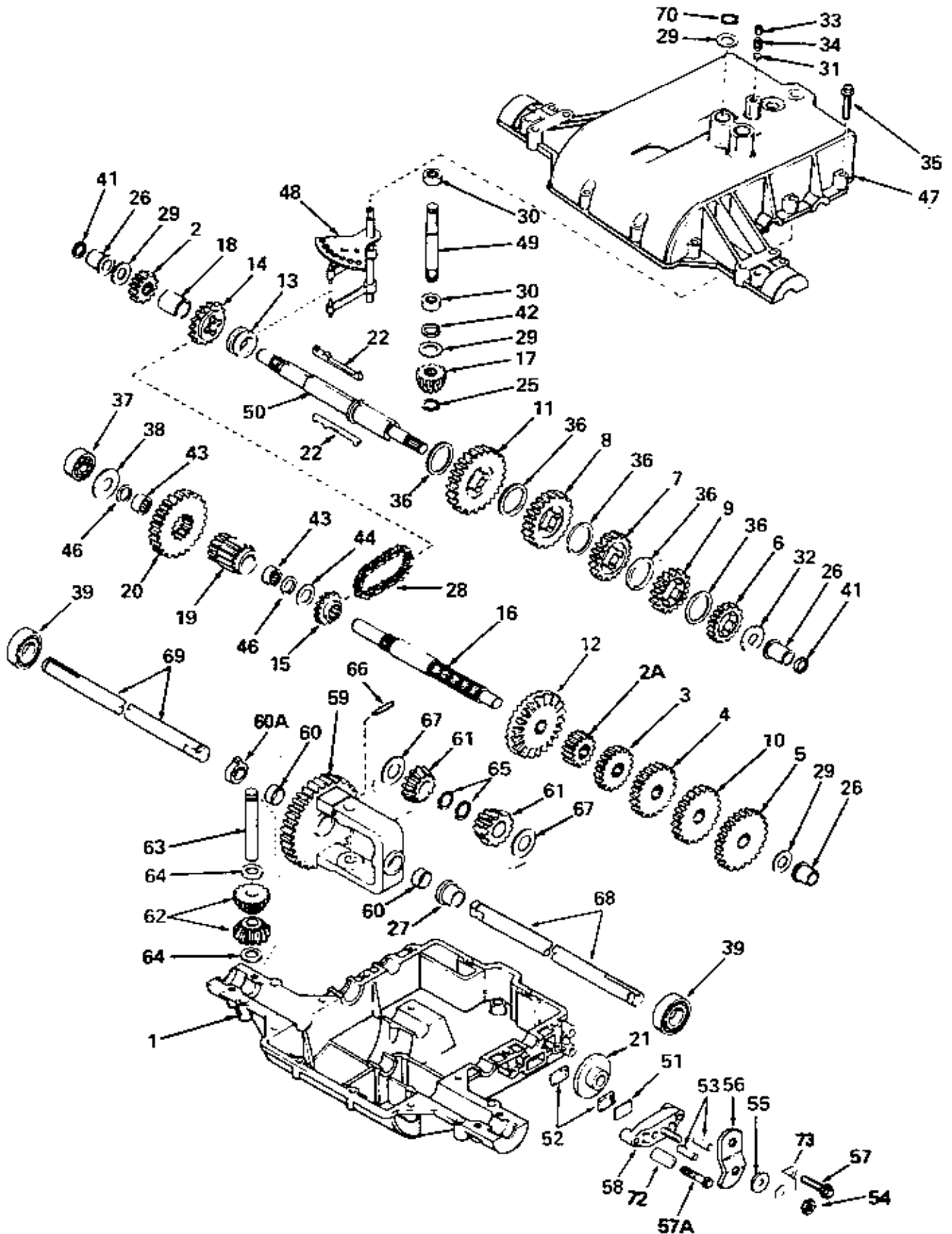
**NOTE:** See an authorized Tecumseh dealer for parts and service; Peerless parts are not available thru *Simplicity*.



Ref. No.	Part No.	Qty.	Description
50	776184A	1	SHAFT, Brake
51	790007	1	PLATE, Brake Pad
52	790006	2	PAD, Brake
53	786026	2	PIN, Dowel
54	792075	2	LOCKNUT, 5/16-24
55	792076	1	WASHER, Flat
56	790019	1	LEVER, Brake
57	792073	1	SCREW, Hex Hd. Thd. Form., 1/4-20 x 1-1/4
57A	792085	1	SCREW, Hex Hd., Thd. Form., 1/4-20 x 2-1/4
58	790005	1	HOLDER, Brake Pad
59	778053A	1	GEAR ASSY., Differential (Incl. 2 of No. 60)
60	780064	2	BUSHING
60A	780120	1	BUSHING
61	778132	2	GEAR, Bevel
62	778131	2	PINION, Bevel
63	786034	1	PIN, Drive
64	780065	2	WASHER, Thrust
65	792018	2	RING, Retaining
66	792040	1	PIN, Roll
67	780001	2	WASHER, Thrust
68	774517	1	AXLE (15-1/2" long)
69	774516	1	AXLE (12-1/2" long)
70	792035	1	RING, Retaining
71	792074	1	PLUG, Hex Hd., 9/16-18 thread
72	786056	1	SPACER

Reference Nos. 1-49 are found on the preceding page.

**NOTE:** See an authorized Tecumseh dealer for parts and service; Peerless parts are not available thru *Simplicity*.

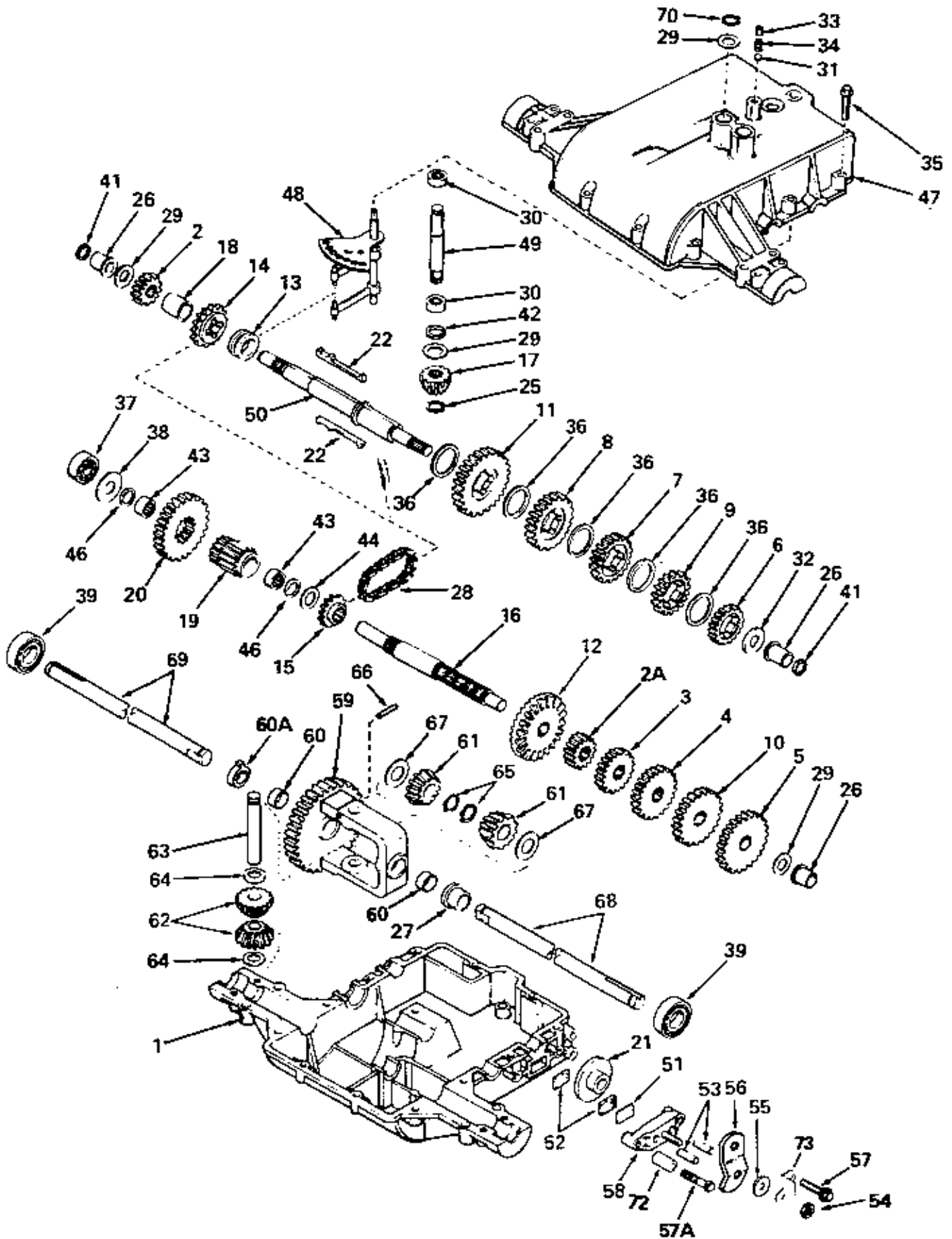




Ref. No.	Part No.	Qty.	Description
1	770071A	1	CASE, Transaxle
1	778136	1	GEAR, Spur (15 teeth)
2A	778145	1	GEAR, Spur (12 teeth)
3	778126A	1	GEAR, Spur (20 teeth)
4	778127A	1	GEAR, Spur (25 teeth)
5	778129A	1	GEAR, Spur (30 teeth)
6	778121A	1	GEAR, Spur (20 teeth)
7	778123A	1	GEAR, Spur (25 teeth)
8	778124A	1	GEAR, Spur (30 teeth)
9	778122A	1	GEAR, Spur (22 teeth)
10	778128A	1	GEAR, Spur (28 teeth)
11	778146A	1	GEAR, Spur (37 teeth)
12	778137A	1	GEAR, Bevel (42 teeth)
13	784266	1	COLLAR, Shift
14	786060	1	SPROCKET (14 teeth)
15	786061	1	SPROCKET (10 teeth)
16	776204	1	SHAFT, Counter
17	778113A	1	BEVEL PINION, Input
18	786074	1	SPACER
19	778138	1	PINION, Output
20	778139	1	GEAR, Output
21	790003	1	DISK, Brake
22	792089A	2	KEY
25	788040	1	RING, Retaining
26	780105A	3	BUSHING, Flanged
27	780118A	1	BUSHING, Flanged
28	786062	1	CHAIN, Roller (No. 41 chain, 22 links)
29	780072	4	WASHER, Thrust
30	780122	2	BEARING, Needle
31	790277	1	BALL, Steel
32	780109	1	WASHER, Thrust
33	792078	1	SCREW, Set, 3/8-16 x 3/8
34	792079	1	SPRING
35	792073	17	SCREW, Hex Hd. thread forming, 1/4-20 x 1-1/4
36	780108	5	WASHER, Thrust
37	780121	1	BEARING, Ball
38	780113	1	WASHER, Flat
39	780119	2	BEARING, Ball
41	788051	2	SEAL, Square Cut
42	788057	1	SEAL, Square Cut
43	780112	2	BEARING, Needle
44	780114	1	WASHER, Flat
46	788053	2	SEAL, Square Cut
47	772082	1	COVER, Transaxle
48	784290	1	ROD & FORK ASSY., Shift
49	776135	1	SHAFT, Input
50	776184A	1	SHAFT, Brake

Reference Nos. 51 - 73 found on the following page.

**NOTE:** See an authorized Tecumseh dealer for parts and service; Peerless parts are not available thru *Simplicity*.






Ref. No.	Part No.	Qty.	Description
51	790007	1	PLATE, Brake Pad
52	790006	2	PAD, Brake
53	786026	2	PIN, Dowel
54	792075	1	LOCKNUT, 5/16-24
55	792076	1	WASHER, Flat
56	790019	1	LEVER, Brake
57	792073	1	SCREW, Hex Hd. thread forming, 1/4-20 x 1-1/4
57A	792084	1	SCREW, Hex Hd., thread forming, 1/4-20 x 2-1/4
58	790025	1	HOLDER, Brake Pad
59	778053A	1	GEAR ASSY., Differential (Incl. 2 of No. 60)
60	780064	2	BUSHING
60A	780120	1	BUSHING
61	778132	2	GEAR, Bevel
62	778131	2	PINION, Bevel
63	786034	1	PIN, Drive
64	780065	2	WASHER, Thrust
65	792018	2	RING, Retaining
66	792040	1	PIN, Roll
67	780001	2	WASHER, Thrust
68	774517	1	AXLE (15-1/2" long)
69	774516	1	AXLE (12-1/2" long)
70	792035	1	RING, Retaining
72	786066	1	SPACER
73	788086	1	BRACKET

Reference Nos. 1 - 50 are found on the preceding page.

**NOTE:** See an authorized Tecumseh dealer for parts and service; Peerless parts are not available thru *Simplicity*.



**TORQUE SPECIFICATIONS FOR  
STANDARD MACHINE HARDWARE  
TOLERANCE  $\pm 20\%$**




SIZE	SAE GRADE #2		SAE GRADE #5		SAE GRADE #8	
						
8-32	19	In. Lbs.	30	In. Lbs.	41	In. Lbs.
8-36	20	"	31	"	43	"
10-24	27	"	43	"	60	"
10-32	31	"	49	"	68	"
1/4-20	66	"	8	Ft. Lbs	12	Ft. Lbs.
1/4-28	76	"	10	"	14	"
5/16-18	11	Ft. Lbs	17	"	25	"
5/16-24	12	"	19	"	25	"
3/8-16	20	"	30	"	45	"
3/8-24	23	"	35	"	50	"
7/16-14	30	"	50	"	70	"
7/16-20	35	"	55	"	80	"
1/2-13	50	"	75	"	110	"
1/2-20	55	"	90	"	120	"
9/16-12	65	"	110	"	150	"
9/16-18	75	"	120	"	170	"
5/8-11	90	"	150	"	220	"
5/8-18	100	"	180	"	240	"
3/4-10	160	"	260	"	386	"
3/4-16	180	"	300	"	420	"
7/8-9	140	"	400	"	600	"
7/8-14	155	"	440	"	660	"
1-8	220	"	580	"	900	"
1-12	240	"	640	"	1,000	"

**NOTE:**

1. These torque values are to be used for all *Simplicity* hardware excluding: locknuts, self-tapping screws, thread forming screws, sheet metal screws and socket head setscrews.
2. Recommended sealing torque values for locknuts:
  - a. For prevailing torque locknuts - use 65% of grade 5 torques.
  - b. For flange whizlock nuts (and screws) - use 135% of grade 5 torques.
3. Unless otherwise noted on assembly drawings all torque values must meet this specification.

**BOLT HEAD MARKING**

**S.A.E. GRADE:**

- 2 
- 5 
- 8 

**SIMPLICITY MANUFACTURING, INC.**  
500 N. Spring St., P.O. Box 997  
Port Washington, WI USA 53074-0997

TP-1060-02  
PRINTED IN U.S.A.  
©1988