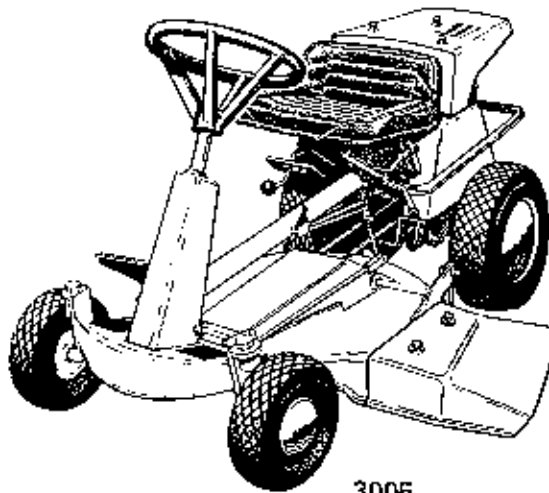


Simplicity

PARTS MANUAL

MODELS 3005 & 3008



3005

5 H.P. / 26" RIDING MOWER

MFG. NO. 1690240

8 H.P. / 30" RIDING MOWER

MFG. NO. 1690242

ATTACHMENTS & ACCESSORIES

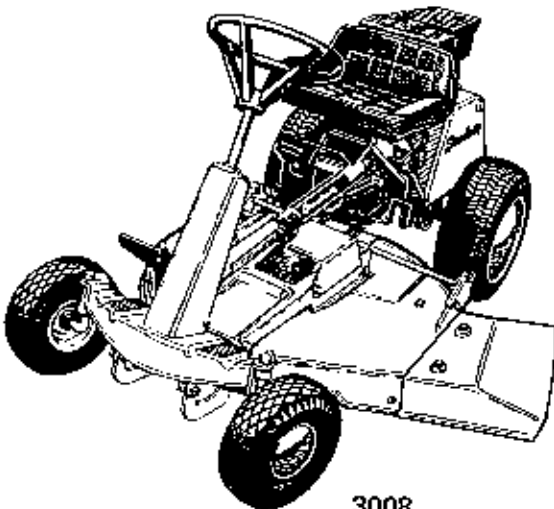
MFG. NO. 1600236

MFG. NO. 1690180

MFG. NO. 1600408

MFG. NO. 1600333

MFG. NO. 1600238



3008

Attention Dealers:

This manual is one of the new style parts manuals which Simplicity is issuing. We trust you will find that this manual contains more information than previously offered in parts manuals, including important facts which will help you with repair work and parts ordering.

The new loose-leaf format allows for easier updating of specific sections should it be necessary and, in general, makes the manual easier to work with in day to day use.

For quick, accurate reference when making warranty claims, group numbers are now given with each parts section. Also note that serial numbers of units are now listed to locate any difference in parts which may occur in later models. Be aware of these unit serial numbers when ordering parts.

Standard torques appear in a chart at the end of the manual, while important individual torques are given on specific parts drawings. These provide easy reference notes for repair and troubleshooting.

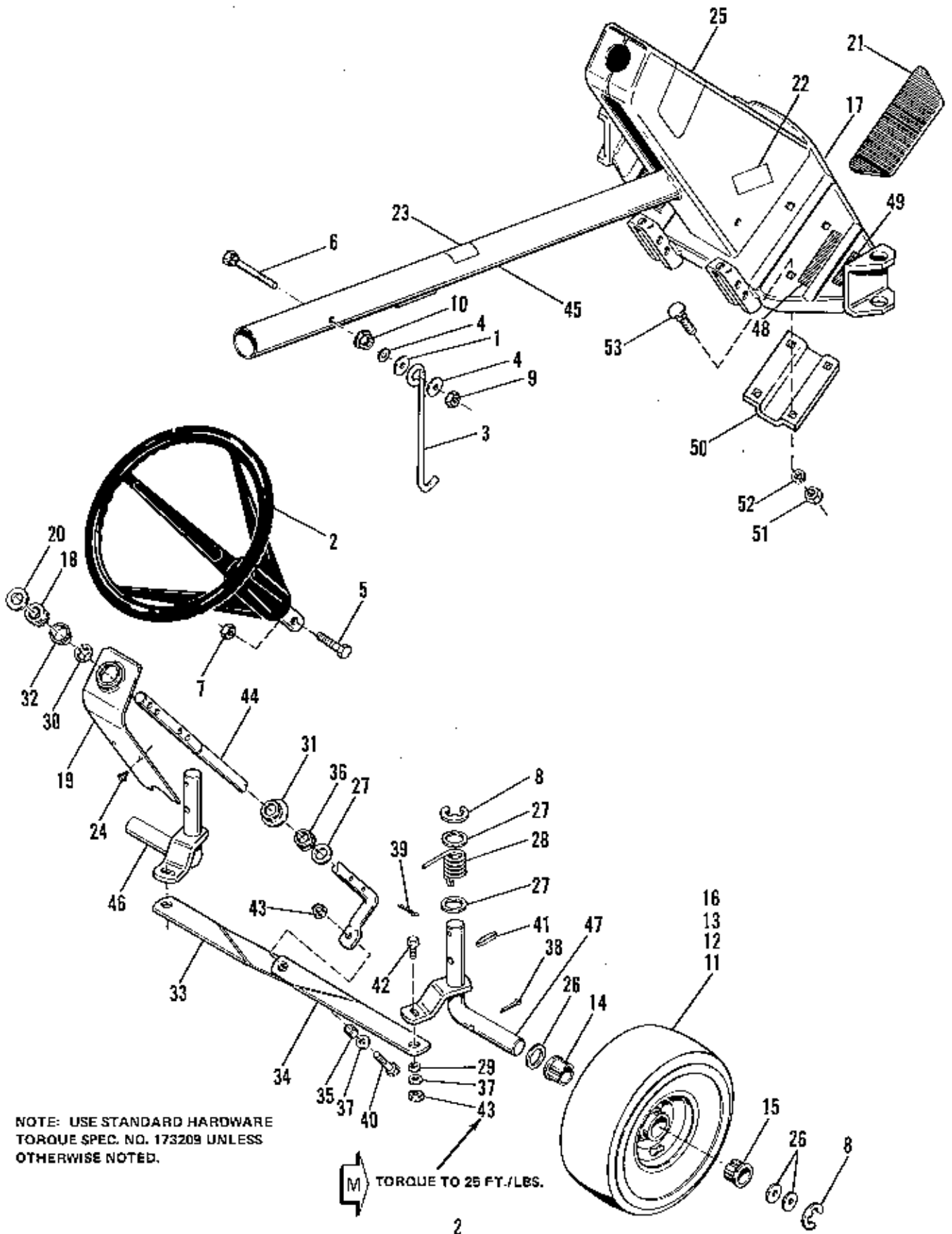
CRITICAL and MAJOR notations point out important facts or instructions which relate to safety or reliability and machine quality. The CRITICAL notation **[C]** pinpoints characteristics which, if not properly followed, can create a safety hazard. The MAJOR notation **[M]** marks characteristics which, if not properly followed, may result in operating failure, shortened product life, or greatly reduced quality of the unit.

We are confident that you will find that these new format parts manuals contain more complete information for your benefit, and that they are much easier to use.

Simplicity
Technical Publications

Table of Contents

FRAME, FRONT WHEELS & STEERING GROUP (3005 & 3008)	2
TRANSMISSION GROUP (3005 & 3008)	4
DRIVE & CONTROL SUB GROUP (3005 & 3008)	6
CLUTCH, BRAKE, DRIVE & CONTROL GROUP (3005 & 3008)	8
ENGINE & SEAT GROUP (3005)	10
ENGINE & SEAT GROUP (3008)	12
FRAME, REAR WHEELS & ELECTRICAL GROUP (3005 & 3008)	14
HOUSING, ARBOR & ROLLER SUB GROUP (3005)	16
CONTROLS, LINKAGE, DEFLECTOR & MISC. GROUP (3005)	18
HOUSING, ARBOR & ROLLER SUB GROUP (3008)	20
CONTROLS, LINKAGE, DEFLECTOR & MISC. GROUP (3008)	22
DUMP CART	24
30" GRASS CATCHER	26
30" GRASS CATCHER ADAPTOR	28
26" GRASS CATCHER ADAPTOR	28
HUB CAPS – WONDERBOY	30
STANDARD HARDWARE TORQUE SPECIFICATIONS	Inside Back Cover



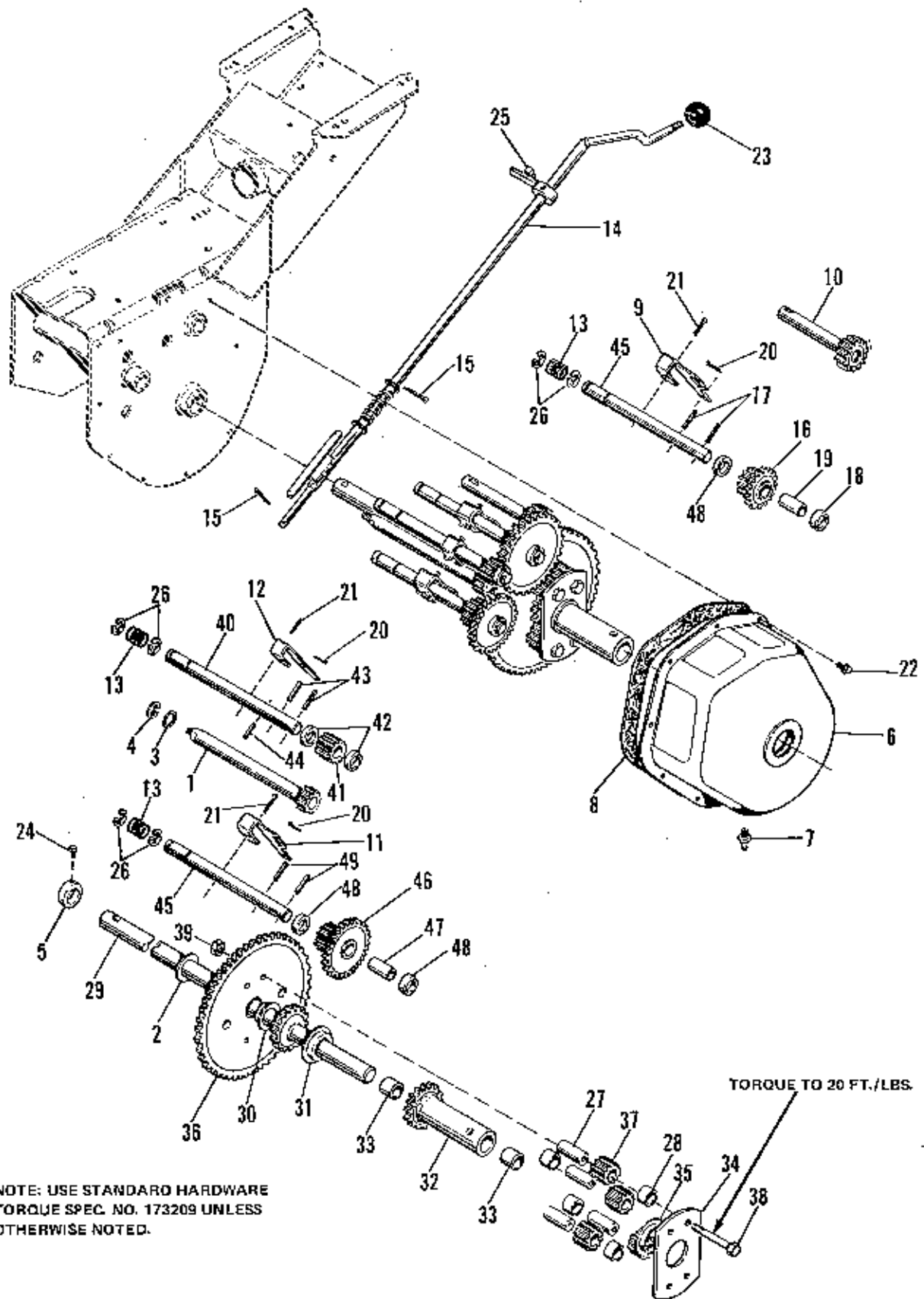
Frame, Front Wheels & Steering Group

77-1

Ref. No.	Part No.	Qty.	Serial No.	Description
1	159134	1	{00000}-(-)	WASHER, Special
2	176501	1	{00000}-(-)	WHEEL, Steering
3	176709	1	{00000}-(-)	HOOK, Mower
4	917642	2	{00000}-(-)	WASHER, Plain, 5/16
5	921221	1	{00000}-(-)	CAPSCREW, Hex Hd., 5/16-18 x 1-1/2
6	922589	1	{00000}-(-)	BOLT, Carriage, 3/8-16 x 3-1/2
7	923362	1	{00000}-(-)	NUT, Hex Lock, 5/16-18
8	927794	4	{00000}-(-)	RING, E, 3/4
9	928731	1	{00000}-(-)	NUT, Hex, Lock, Jam, 3/8-16
10	930645	1	{00000}-(-)	NUT, Flange, 3/8-16
11	1608379	2	{00000}-(-)	WHEEL & TIRE ASSY, Front
12	163108	2	{00000}-(-)	TIRE, 4.10 - 3.50 x 4
13	163109	2	{00000}-(-)	TUBE, 4.10 - 3.50
14	163110	1	{00000}-(-)	BEARING
15	163111	1	{00000}-(-)	BEARING, Relief
16	1608380	2	{00000}-(-)	WHEEL, Front
17	106718	1	{00000}-(-)	DECAL, Simplicity
18	157077	1	{00000}-(-)	BUSHING
19	158215	1	{00000}-(-)	COVER, Steering Support
20	158223	1	{00000}-(-)	WASHER, Nylon
*21	158428	2	{00000}-(-)	PAD, Foot, L.H. & R.H.
22	174924	1	{00000}-(-)	DECAL, Instruction
23	177078	1	{00000}-(-)	DECAL, Parking Brake
24	929477	2	{00000}-(-)	SCREW, Hex, Wshr Hd., Taptite, No. 10-24 x 1/2
25	1857106	1	{00000}-(-)	DECAL, Steering Column
26	101022	6	{00000}-(-)	WASHER, 3/8
27	108181	5	{00000}-(-)	WASHER, 3/8
28	121011	2	{00000}-(-)	SPRING, Tension
29	153081	2	{00000}-(-)	SPACER
30	157241	1	{00000}-(-)	RING, Snap
31	158012	1	{00000}-(-)	CLIP, Steering Shaft
32	158222	1	{00000}-(-)	CLIP, Steering Bush
33	158225	1	{00000}-(-)	LINK, Steering, L.H.
34	158226	1	{00000}-(-)	LINK, Steering, R.H.
35	158227	1	{00000}-(-)	SPACER
36	159026	1	{00000}-(-)	BUSHING
37	917378	3	{00000}-(-)	WASHER, Plain, 3/8
38	919314	2	{00000}-(-)	PIN, Cotter, 3/16 x 1-1/4
39	919430	2	{00000}-(-)	PIN, Cotter, 5/32 x 1-1/4
40	921969	1	{00000}-(-)	CAPSCREW, Hex Hd., 3/8-16 x 1-1/2
41	925362	2	{00000}-(-)	PIN, Spring, 5/16 x 1-1/4
42	928728	2	{00000}-(-)	SCREW, Hex, Flange, Whiz Lock, 3/8-16 x 1
43	930651	3	{00000}-(-)	NUT, Hex, Center Lock, 3/8-16
44	1608948	1	{00000}-(-)	SHAFT, Steering
45	1609448	1	{00000}-(-)	AXLE & FRAME ASSY, Front
46	1656410	1	{00000}-(-)	SPINDLE ASSY, L.H.
47	1656411	1	{00000}-(-)	SPINDLE ASSY, R.H.
**48	162098	2	{00000}-(-)	PAD, Pedal
**49	1609454	2	{00000}-(-)	PAD, Pedal
**50	1609426	2	{00000}-(-)	HITCH ASSY, Mower
**51	916950	6	{00000}-(-)	NUT, Hex, 3/8-16
**52	916965	6	{00000}-(-)	LOCKWASHER, Spring, 3/8
**53	923232	6	{00000}-(-)	BOLT, Carriage, 3/8-16 x 1

NOTE: * Used Only On Mfg. No. 1690240

** Used Only On Mfg. No. 1690242

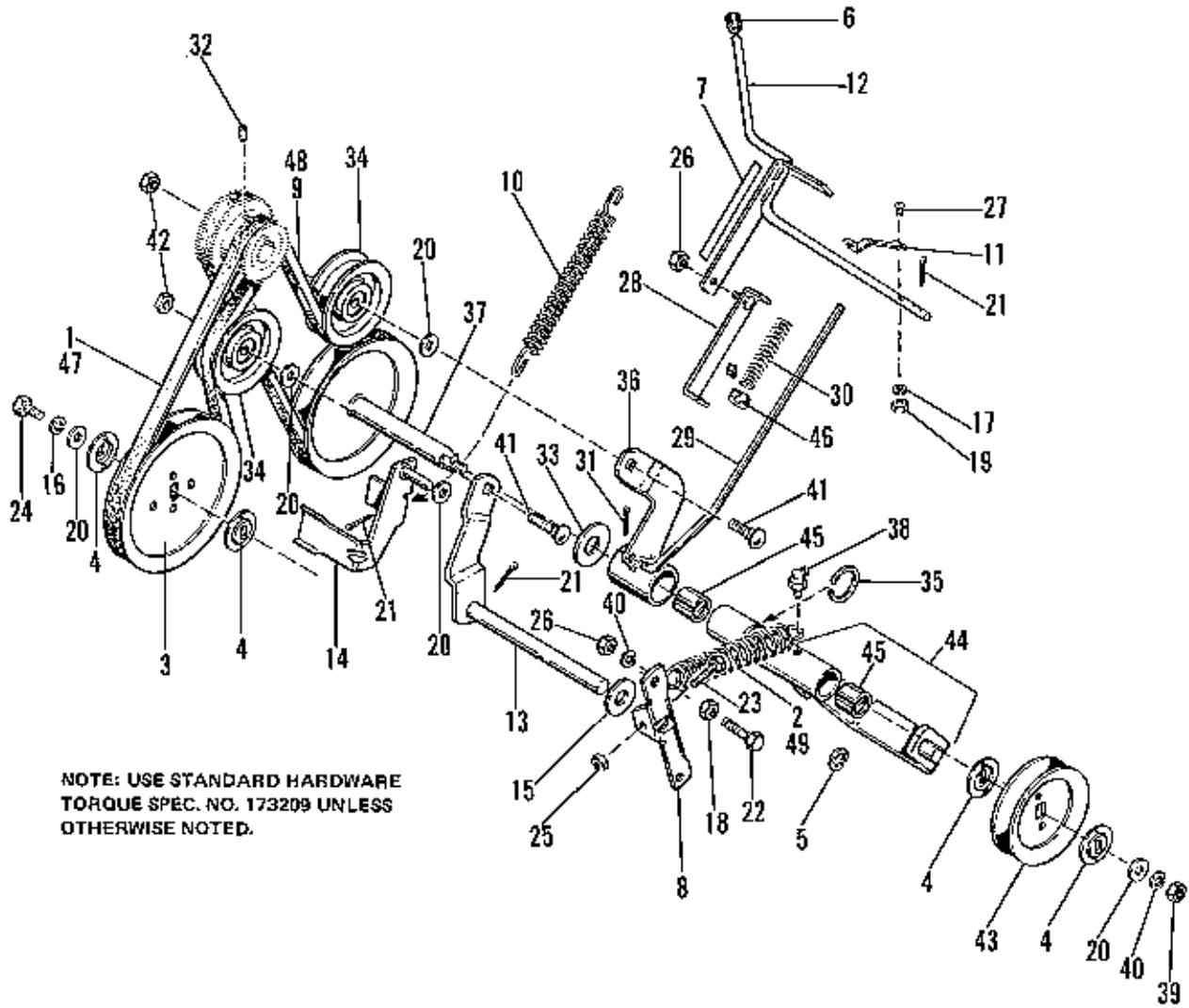


NOTE: USE STANDARD HARDWARE
TORQUE SPEC. NO. 173209 UNLESS
OTHERWISE NOTED.

Transmission Group

77-1

Ref. No.	Part No.	Qty.	Serial No.	Description
1	106944	1	(00000)-()	SHAFT & GEAR ASSY
2	118252	1	(00000)-()	WASHER, Special
3	153079	1	(00000)-()	WASHER
4	153124	1	(00000)-()	RING, Retaining
5	158357	1	(00000)-()	COLLAR, Set
6	158521	1	(00000)-()	CASE ASSY, Gear
7	928724	1	(00000)-()	FITTING, Lube, 7/16
8	158524	1	(00000)-()	GASKET, Gear Case
9	158535	1	(00000)-()	LINK, Shift, Hi.
10	158548	1	(00000)-()	BRAKE, SHAFT & GEAR ASSY
11	158583	1	(00000)-()	LINK, Shift, Lo
12	158564	1	(00000)-()	LINK, Shift, Reverse
13	158578	3	(00000)-()	SPRING
14	176438	1	(00000)-()	ROD ASSY, Shift
15	918452	2	(00000)-()	PIN, Cotter, 1/8 x 1
16	158570	1	(00000)-()	GEAR & BEARING ASSY
17	918111	4	(00000)-()	PIN, Spring, 1/8 x 1
18	158561	4	(00000)-()	COLLAR, Thrust
19	158544	2	(00000)-()	BEARING
20	918447	3	(00000)-()	PIN, Cotter, 3/32 x 3/4
21	919314	3	(00000)-()	PIN, Cotter, 3/16 x 1-1/4
22	927428	9	(00000)-()	SCREW, Hex, Wshr. Hd., Taptite, 1/4-20 x 3/8
23	8021050	1	(00000)-()	BALL, Knob
24	928709	1	(00000)-()	SCREW, Hex, Sq.Hd., Cup Pt., 5/16-18 x 3/8
25	928721	1	(00000)-()	SCREW, Hex, Sq.Hd., Cup Pt., 5/16-18 x 1/2
26	1602155	6	(00000)-()	RING, E
27	121083	4	(00000)-()	SPACER, Pinion Diff.
28	121084	4	(00000)-()	SPACER, Diff.
29	158352	1	(00000)-()	AXLE ASSY, L.H.
30	158356	1	(00000)-()	BUSHING
31	158358	1	(00000)-()	CUP, Thrust
32	158359	1	(00000)-()	AXLE & BUSHING ASSY
33	158363	2	(00000)-()	BUSHING
34	158364	1	(00000)-()	PLATE, Differential
35	158365	1	(00000)-()	BUSHING
36	158530	1	(00000)-()	GEAR, Drive
37	158579	4	(00000)-()	PINION, Differential
38	921972	4	(00000)-()	CAPSCREW, Hex Hd., 3/8-16 x 2-1/2
39	923428	4	(00000)-()	NUT, Hex, Full, Lock, 3/8-16
40	158534	1	(00000)-()	SHAFT, Reverse
41	158557	1	(00000)-()	PINION, Reverse
42	158562	2	(00000)-()	COLLAR, Thrust
43	916168	2	(00000)-()	PIN, Spring, 1/4 x 3/4
44	921450	1	(00000)-()	PIN, Spring, 5/32 x 1
45	158541	2	(00000)-()	SHAFT, Intermediate
46	158542	1	(00000)-()	GEAR & BEARING ASSY

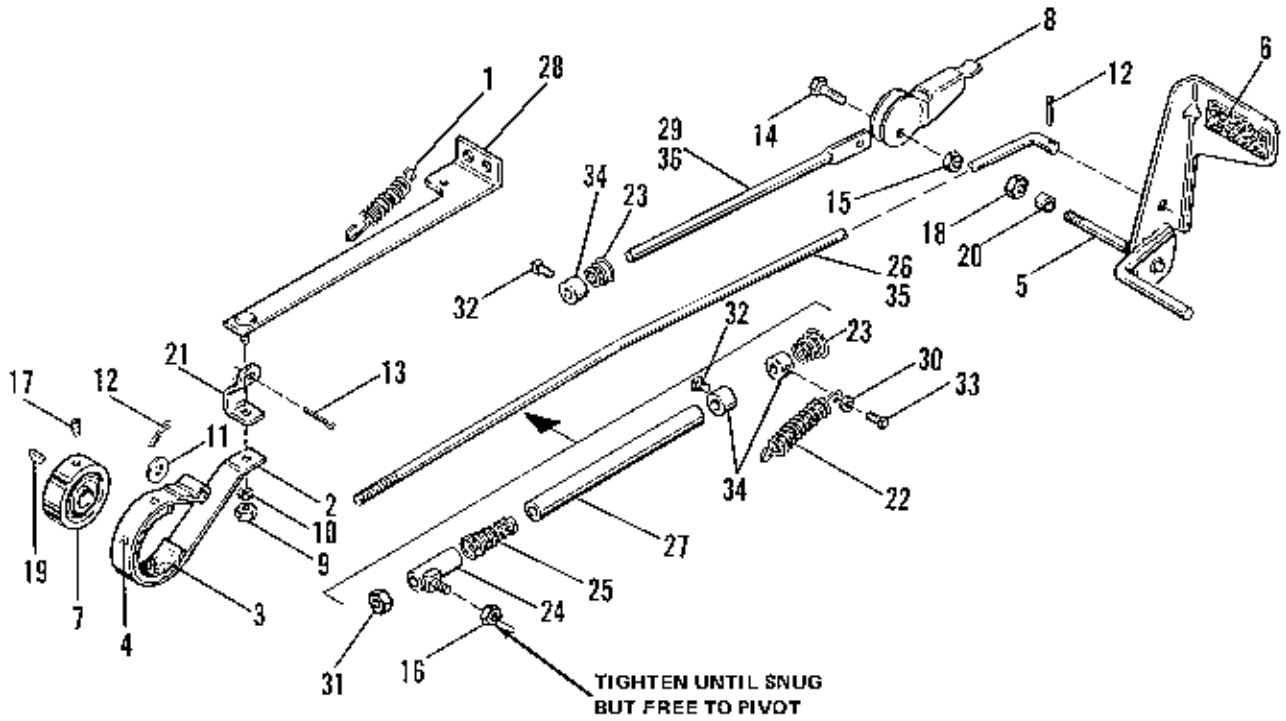


NOTE: USE STANDARD HARDWARE
TORQUE SPEC. NO. 173209 UNLESS
OTHERWISE NOTED.

Ref. No.	Part No.	Qty.	Serial No.	Description
*1	121398	1	{00000}-{ }	BELT, V
*2	154369	1	{00000}-{ }	SPRING, PTO
3	158377	1	{00000}-{ }	PULLEY
4	158378	4	{00000}-{ }	WASHER, w/Notch, 3/16
5	158399	1	{00000}-{ }	RING, Retaining
6	158437	1	{00000}-{ }	KNOB
7	158452	1	{00000}-{ }	DECAL, Clutch
8	158536	1	{00000}-{ }	LEVER, Clutch
*9	158573	1	{00000}-{ }	BELT, V, Transmission
10	175290	1	{00000}-{ }	SPRING, Tension
11	176414	1	{00000}-{ }	CLIP, Spring
12	176427	1	{00000}-{ }	HANDLE ASSY, Control
13	158537	1	{00000}-{ }	ARM ASSY, Idler
14	176587	1	{00000}-{ }	BRAKE ASSY, PTO
15	916960	1	{00000}-{ }	WASHER, Plain, 1/2
16	917356	2	{00000}-{ }	LOCKWASHER, Spring, 5/16
17	917365	1	{00000}-{ }	LOCKWASHER, Spring, No.10-3/16
18	917372	1	{00000}-{ }	NUT, Hex, 5/16-18
19	917415	1	{00000}-{ }	NUT, Hex, Mach. No. 10 32
20	917642	5	{00000}-{ }	WASHER, Plain, 5/16
21	918452	4	{00000}-{ }	PIN, Cotter, 1/8 x 1
22	921221	1	{00000}-{ }	CAPSCREW, Hex Hd., 5/16-18 x 1-1/2
23	921960	1	{00000}-{ }	CAPSCREW, Hex Hd., 1/4-20 x 1
24	923325	1	{00000}-{ }	CAPSCREW, Hex Hd., 5/16-18 x 7/8
25	923358	1	{00000}-{ }	NUT, Hex, Lock, 1/4-20
26	923362	2	{00000}-{ }	NUT, Hex, Lock, 5/16-18
27	930494	1	{00000}-{ }	SCREW, Rd. Hd., No. 10-32 x 3/4
28	158406	1	{00000}-{ }	GUIDE ASSY, Rod
29	158609	1	{00000}-{ }	ROD, PTO, Clutch
30	163103	1	{00000}-{ }	SPRING
31	918447	1	{00000}-{ }	PIN, Cotter, 3/32 x 3/4
32	926804	1	{00000}-{ }	SCREW, Set, Sq. Hd., Cup Pt., 1/4-20 x 3/8, Gr.B
33	119018	1	{00000}-{ }	WASHER
34	154534	2	{00000}-{ }	PULLEY, Idler
35	158396	1	{00000}-{ }	RING, Retaining
36	158461	1	{00000}-{ }	LEVER ASSY, Idler
37	158630	1	{00000}-{ }	PULLEY & SHAFT ASSY
38	915019	1	{00000}-{ }	FITTING, Lube, Elbow 90°, 1/4-28
39	916950	1	{00000}-{ }	NUT, Hex, 3/8-16
40	916965	1	{00000}-{ }	LOCKWASHER, Spring, 3/8
41	922249	2	{00000}-{ }	BOLT, Rd. Hd., 3/8-16 x 1
42	923428	2	{00000}-{ }	NUT, Hex, Full Lock, 3/8-16
43	1609004	1	{00000}-{ }	PULLEY
44	1611127	1	{00000}-{ }	HOUSING & BEARING SUB ASSY
45	108054	2	{00000}-{ }	BEARING, Needle
46	8191022	1	{00000}-{ }	COLLAR, Set
**47	1608954	1	{00000}-{ }	BELT, V
**48	1608960	1	{00000}-{ }	BELT
**49	1609257	1	{00000}-{ }	SPRING, PTO

NOTE: * Ref. No.'s 1, 2 & 9 Used on Mfg. No. 1690240

** Ref. No.'s 47, 48 & 49 Used on Mfg. No. 1690242



NOTE: USE STANDARD HARDWARE
TORQUE SPEC. NO. 173209 UNLESS
OTHERWISE NOTED.

Clutch, Brake, Drive & Control Group

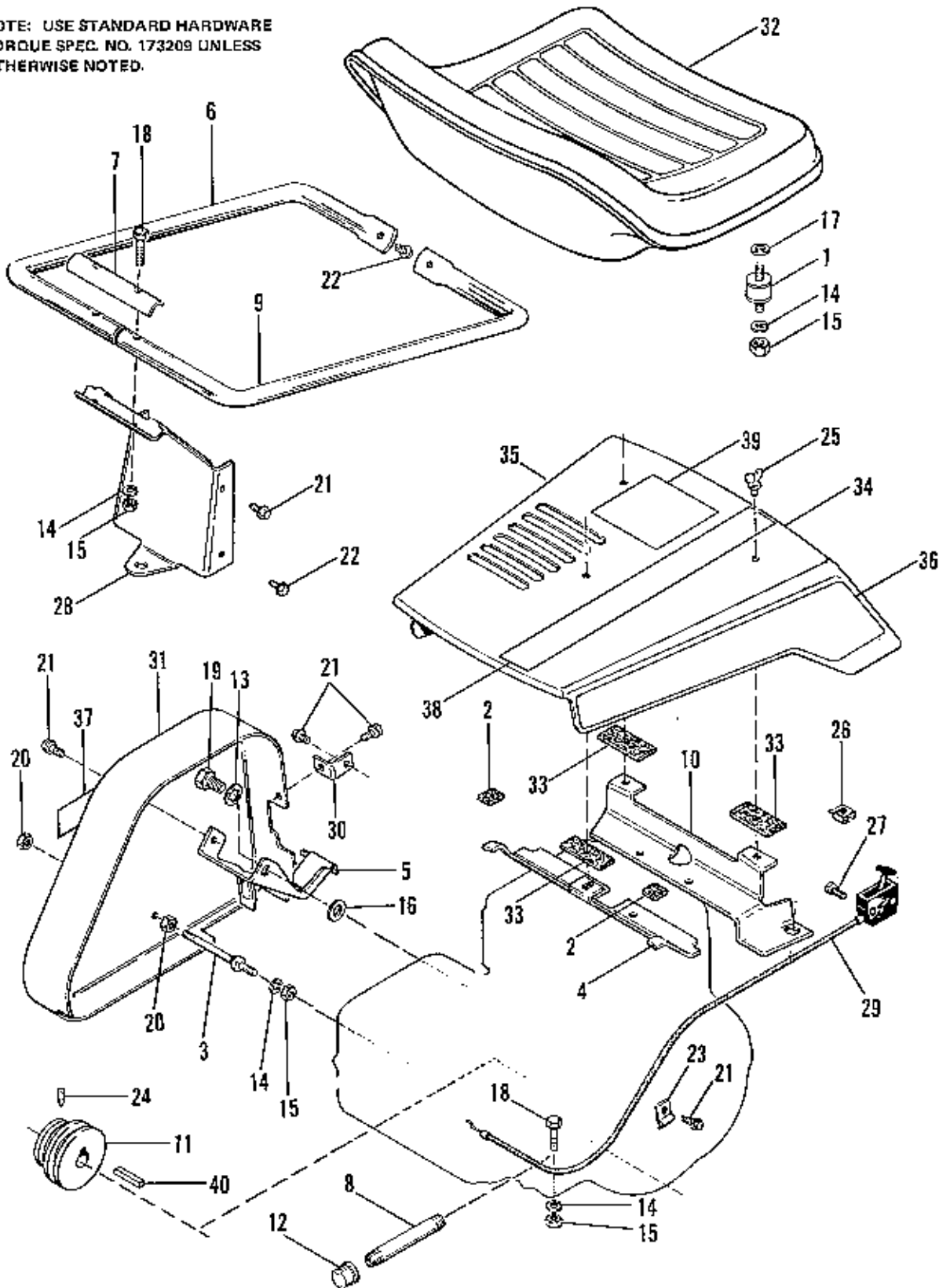
77-1

Ref. No.	Part No.	Qty.	Serial No.	Description
1	153121	1	{00000}-{ }	SPRING
2	158552	1	{00000}-{ }	BRAKE BAND ASSY
3	158136	1	{00000}-{ }	LINING, Brake
4	928810	3	{00000}-{ }	RIVET, Tubular, 3/16 x 1/4
5	158604	1	{00000}-{ }	FOOT PEDAL ASSY
6	182098	1	{00000}-{ }	PAD, Pedal
7	165067	1	{00000}-{ }	DRUM, Brake
8	176425	1	{00000}-{ }	LEVER
9	916622	1	{00000}-{ }	NUT, Hex, 1/4-20
10	916964	1	{00000}-{ }	LOCKWASHER, Spring, 1/4
11	917642	1	{00000}-{ }	WASHER, Plain, 5/16
12	918452	2	{00000}-{ }	PIN, Cotter, 1/4 x 1
13	919430	1	{00000}-{ }	PIN, Cotter, 5/32 x 1-1/4
14	921959	1	{00000}-{ }	CAPSCREW, Hex Hd., 1/4-20 x 5/8
15	923358	1	{00000}-{ }	NUT, Hex, Lock, 1/4-20
16	923362	1	{00000}-{ }	NUT, Hex, Lock, 5/16-18
17	928691	1	{00000}-{ }	SCREW, Set, Hex, Skt., 5/16-18 x 5/16
18	930645	1	{00000}-{ }	NUT, Flange, 3/8-16
19	930669	1	{00000}-{ }	KEY, Hi Pro, 5/32 x 5/8
20	1608657	1	{00000}-{ }	SPACER
21	1809261	1	{00000}-{ }	LEVER, Brake
22	118495	1	{00000}-{ }	SPRING
23	163010	2	{00000}-{ }	SPRING, Hood
24	156303	1	{00000}-{ }	GUIDE ASSY, Rod
25	157041	1	{00000}-{ }	SPRING, Compression
*26	158575	1	{00000}-{ }	ROD, Clutch
27	172179	1	{00000}-{ }	SPACER
28	176429	1	{00000}-{ }	GUIDE ASSY, Brake
*29	176431	1	{00000}-{ }	ROD, Brake
30	916955	1	{00000}-{ }	WASHER, Plain, 3/16
31	924433	1	{00000}-{ }	NUT, Esna
32	928804	2	{00000}-{ }	SCREW, Set, Sq. Hd., Cup Pt., 1/4-20 x 3/8, Gr. 8
33	930539	1	{00000}-{ }	SCREW, Set, Sq. Hd., Cup Pt., 1/4-20 x 5/8, Gr. 8
34	8191022	3	{00000}-{ }	COLLAR, Set
**35	1608961	1	{00000}-{ }	ROD, Clutch
**36	1809442	1	{00000}-{ }	ROD, Brake

NOTE: *Ref. No.'s 26 & 29 Used On Mfg. No. 1690240

** Ref. No.'s 35 & 36 Used On Mfg. No. 1690242

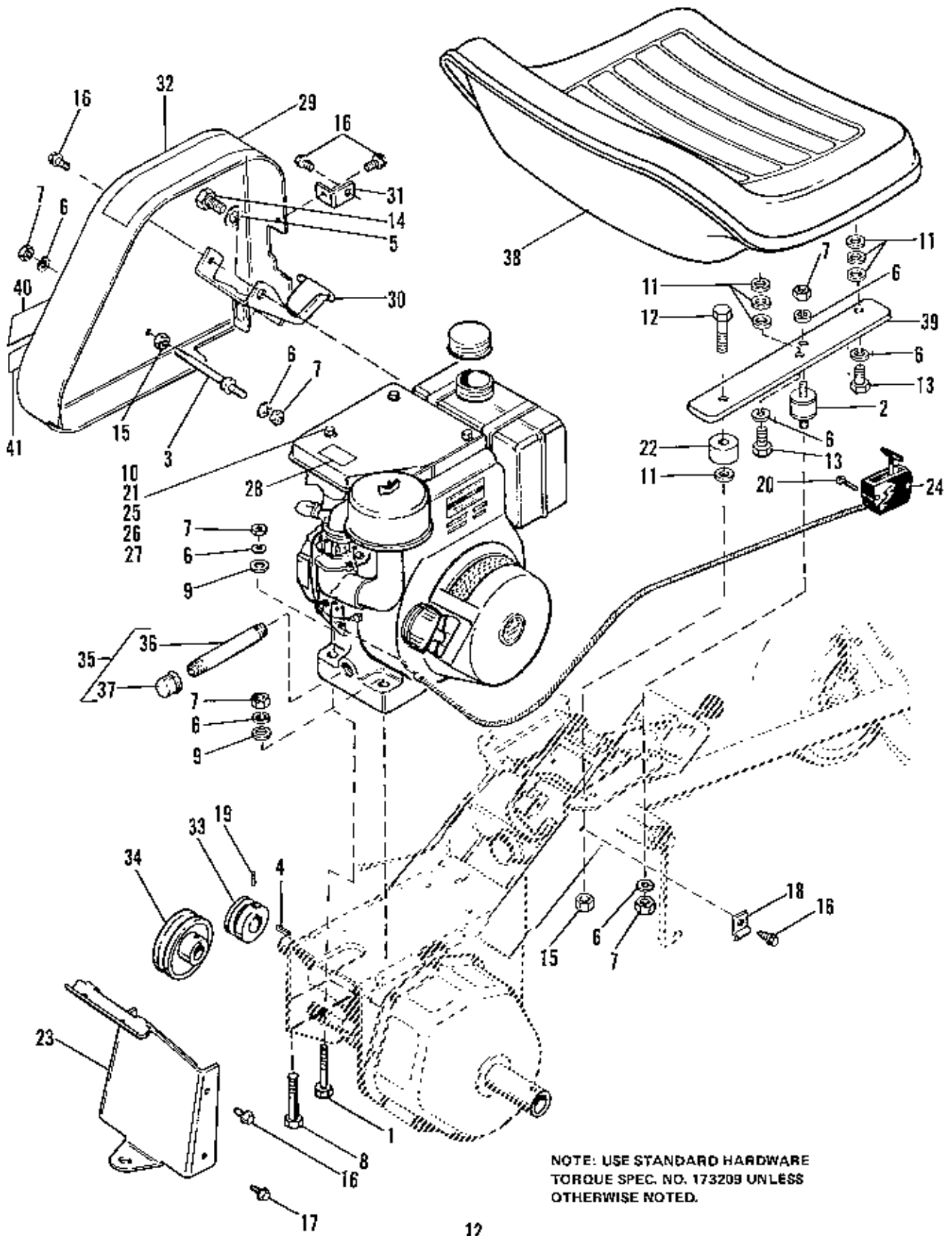
NOTE: USE STANDARD HARDWARE
TORQUE SPEC. NO. 173209 UNLESS
OTHERWISE NOTED.



Engine & Seat Group

77-1

Ref. No.	Part No.	Qty.	Serial No.	Description
1	157034	4	{00000}-{ }	CONNECTOR, Cushion
2	157582	2	{00000}-{ }	BUTTON, Bumper
3	158418	1	{00000}-{ }	STUD, Pulley Guard
4	158449	1	{00000}-{ }	SUPPORT, Rear Hood
5	158527	1	{00000}-{ }	STOP, Belt
6	158583	1	{00000}-{ }	HANDLE, Rear, L.H.
7	158584	1	{00000}-{ }	BRACKET, Support Handle
8	158610	1	{00000}-{ }	NIPPLE, Pipe
9	174629	1	{00000}-{ }	HANDLE, Rear, R.H.
10	174746	1	{00000}-{ }	SUPPORT, Front Hood
11	176584	1	{00000}-{ }	PULLEY
12	901751	1	{00000}-{ }	CAP, Pipe
13	909589	1	{00000}-{ }	LOCKWASHER, Internal Tooth, 1/2
14	917356	12	{00000}-{ }	LOCKWASHER, Spring, 5/16
15	917372	12	{00000}-{ }	NUT, Hex, 5/16-18
16	918431	1	{00000}-{ }	WASHER, Plain, 1/2
17	919381	4	{00000}-{ }	WASHER, Plain, 5/16
18	921221	6	{00000}-{ }	CAPSCREW, Hex Hd., 5/16-18 x 1-1/2
19	921370	1	{00000}-{ }	CAPSCREW, Hex Hd., 1/2-20 x 1
20	923362	2	{00000}-{ }	NUT, Hex, Lock, 5/16-18
21	924856	7	{00000}-{ }	SCREW, Tapping, 5/16-18 x 1/2
22	925003	3	{00000}-{ }	SCREW, Tapping, 1/4-20 x 1/2
23	926271	1	{00000}-{ }	CLIP, Closed
24	928691	1	{00000}-{ }	SCREW, Set, Hex Skt., 5/16-18 x 5/16
25	928693	3	{00000}-{ }	SCREW, Wing, 5/16-18 x 3/4
26	928701	3	{00000}-{ }	NUT, Retainer, 5/16-18
27	928732	2	{00000}-{ }	SCREW, Tap, Hex, Wash. Hd., No.10-24 x1
28	1608938	1	{00000}-{ }	HITCH PLATE, Rear
29	1608962	1	{00000}-{ }	THROTTLE & CHOKE ASSY
30	1609444	1	{00000}-{ }	BRACKET, Pulley Guard
31	1609446	1	{00000}-{ }	GUARD, Pulley
32	1651879	1	{00000}-{ }	SEAT ASSY
33	121399	3	{00000}-{ }	GASKET, Felt
34	158515	1	{00000}-{ }	HOOD ASSY
35	1657104	1	{00000}-{ }	DECAL, Hood, R.H.
36	1657105	1	{00000}-{ }	DECAL, Hood, L.H.
37	1657108	2	{00000}-{ }	DECAL, 3005
38	1657169	1	{00000}-{ }	DECAL, Stripe
39	1657293	1	{00000}-{ }	DECAL, Safety
40	8221042	1	{00000}-{ }	KEY

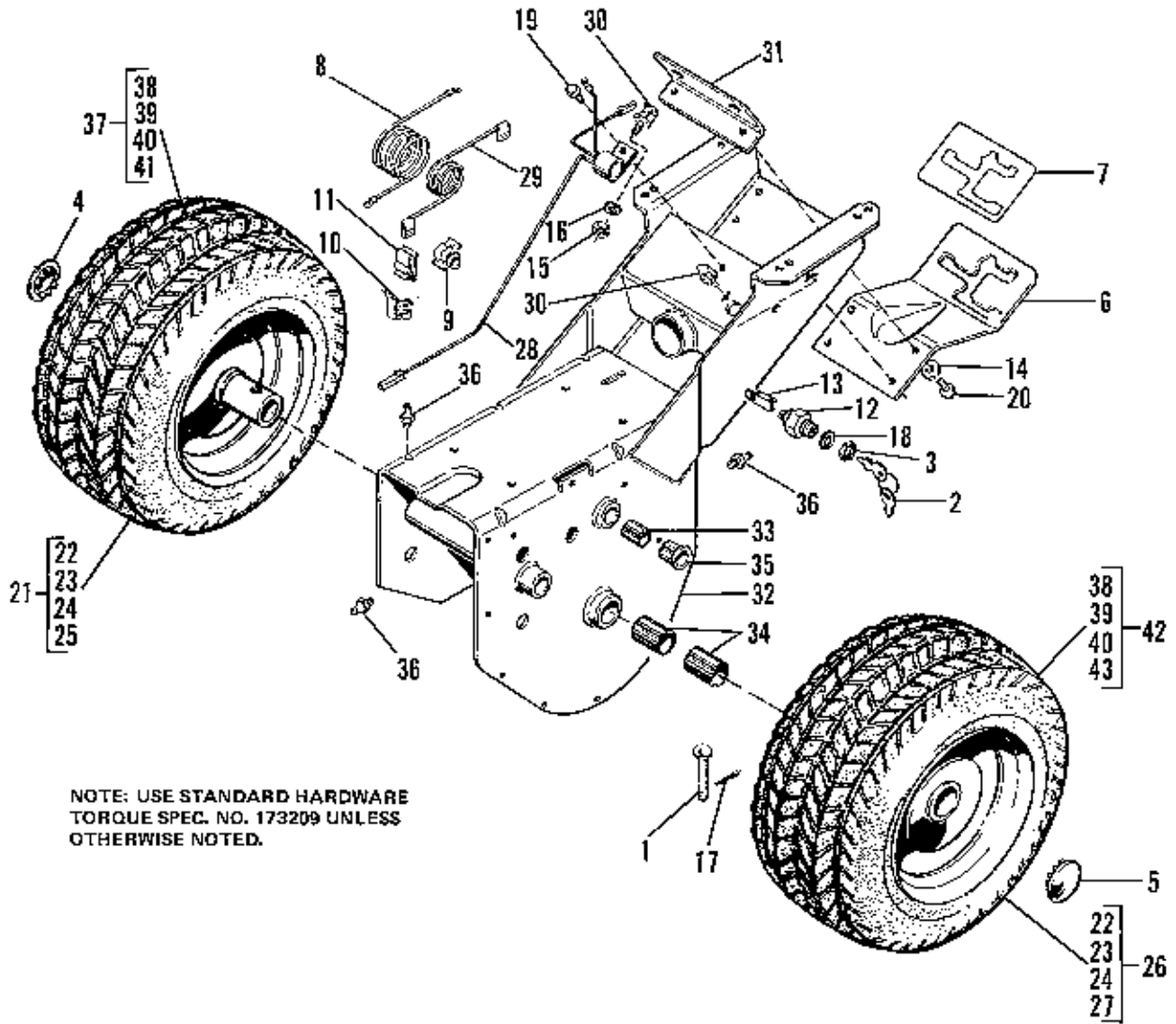


NOTE: USE STANDARD HARDWARE
TORQUE SPEC. NO. 173209 UNLESS
OTHERWISE NOTED.

Engine & Seat Group

77-1

Ref. No.	Part No.	Qty.	Serial No.	Description
1	156151	1	{00000}-{ }	SCREW, Hex
2	157094	2	{00000}-{ }	CONNECTOR, Cushion
3	158418	1	{00000}-{ }	STUD, Pulley Guard
4	905100	1	{00000}-{ }	KEY, Parallel, Plain, 1/4 x 1/4 x 2-1/4
5	909589	1	{00000}-{ }	LOCKWASHER, Internal Tooth, 1/2
6	917356	14	{00000}-{ }	LOCKWASHER, Spring, 5/16
7	917372	10	{00000}-{ }	NUT, Hex, 5/16-18
8	917398	3	{00000}-{ }	CAPSCREW, Hex Hd., 5/16-18 x 1-3/4
9	917642	4	{00000}-{ }	WASHER, Plain, 5/16
10	919316	1	{00000}-{ }	CAPSCREW, Hex Hd., 1/4-20 x 1-3/4
11	919381	14	{00000}-{ }	WASHER, Plain, 5/16
12	921221	2	{00000}-{ }	CAPSCREW, Hex Hd., 5/16-18 x 1-1/2
13	921333	4	{00000}-{ }	CAPSCREW, Hex Hd., 5/16-18 x 1
14	921370	1	{00000}-{ }	CAPSCREW, Hex Hd., 1/2-20 x 1
15	923362	4	{00000}-{ }	NUT, Hex, Lock, 5/16-18
16	924856	7	{00000}-{ }	SCREW, Tapping, 5/16-18 x 1/2
17	925003	1	{00000}-{ }	SCREW, Tapping, 1/4-20 x 1/2
18	926271	1	{00000}-{ }	CLIP, Closed
19	928691	1	{00000}-{ }	SCREW, Set, Hex Skt., 5/16-18 x 5/16
20	928732	2	{00000}-{ }	SCREW, Tap, Hex, Wshr. Hd., No.10-24 x 1
21	929000	2	{00000}-{ }	SCREW, Tap, Hex, Wshr. Hd., 1/4-20 x 3/8
22	1608535	2	{00000}-{ }	RUBBER MOUNT, Seat Cushion
23	1608938	1	{00000}-{ }	PLATE, Hitch Rear
24	1608962	1	{00000}-{ }	THROTTLE & CHOKE ASSY
25	1608963	1	{00000}-{ }	SHIELD, Heat
26	1608980	1	{00000}-{ }	SUPPORT, Heat Shield
27	1608994	1	{00000}-{ }	SPACER
28	1609140	1	{00000}-{ }	DECAL, Caution
29	1609232	1	{00000}-{ }	DECAL, Safety
30	1609443	1	{00000}-{ }	STOP, Belt
31	1609444	1	{00000}-{ }	BRACKET, Pulley Guard
32	1609445	1	{00000}-{ }	GUARD, Pulley
33	1609449	1	{00000}-{ }	PULLEY, Engine
34	1609451	1	{00000}-{ }	PULLEY, Transmission Drive
35	1611125	1	{00000}-{ }	PIPE & NIPPLE
36	901496	1	{00000}-{ }	NIPPLE, Pipe, 3/8 x 4-1/2
37	901752	1	{00000}-{ }	CAP, Pipe, 3/8
38	1651879	1	{00000}-{ }	SEAT ASSY
39	1656499	2	{00000}-{ }	SUPPORT, Seat
40	1657107	1	{00000}-{ }	DECAL, Cover
41	1657109	1	{00000}-{ }	DECAL, 3008



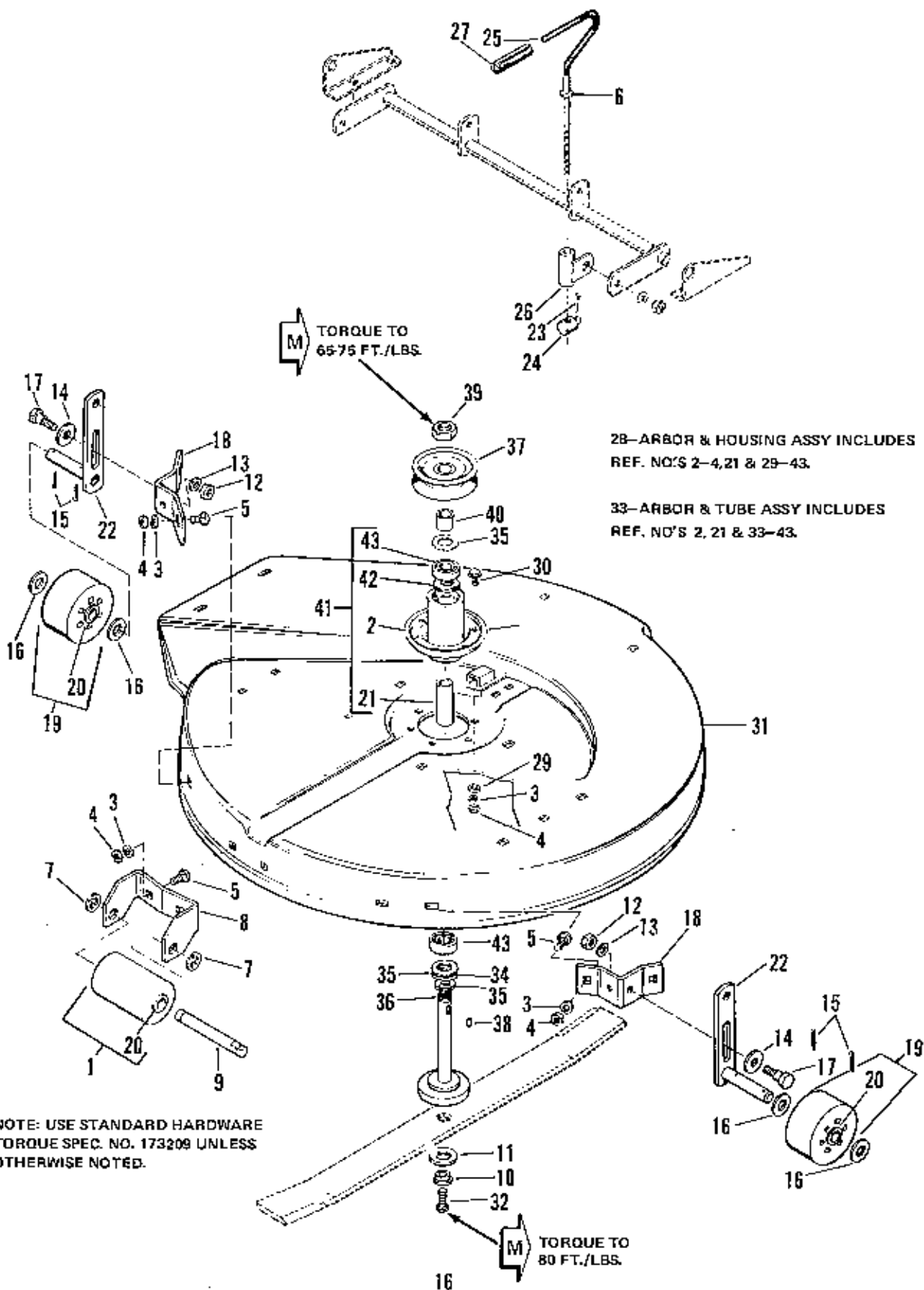
Frame, Rear Wheels & Electrical Group

77-1

Ref. No.	Part No.	Qty.	Serial No.	Description
1	118053	2	{00000}-4	PIN
2	122203	2	{00000}-4	KEY & RING ASSY
3	122234	1	{00000}-1	NUT, Hex, 5/8-32
4	158433	1	{00000}-1	PLUG, Button
5	158436	1	{00000}-1	PLUG, Button
6	172923	1	{00000}-1	PLATE, Shift Pattern
7	172989	1	{00000}-1	DECAL, Shift Pattern
8	176480	1	{00000}-0	WIRE
9	176675	1	{00000}-1	CLIP, Speed, Cable
10	176687	1	{00000}-0	CLIP, Speed, Cable
11	176701	2	{00000}-0	CLIP, Speed, Cable
12	177163	1	{00000}-0	SWITCH
13	177164	1	{00000}-0	ADAPTOR
14	917377	4	{00000}-0	WASHER, Plain, 1/4
15	917385	1	{00000}-4	NUT, Hex, Mech. No. 8-32
16	917489	1	{00000}-0	LOCKWASHER, Internal Tooth, No. 8
17	918452	2	{00000}-0	PIN, Cotter
18	918906	1	{00000}-0	LOCKWASHER, Internal Tooth 5/8
19	927428	1	{00000}-1	SCREW, Hex, Wshr. Hd., Taprite, 1/4-20 x 3/8
20	927429	4	{00000}-0	SCREW, Hex, Wshr. Hd., Taprite, 1/4-20 x 5/8
*21	1608381	1	{00000}-0	WHEEL & TIRE ASSY, Rear, L.H.
*22	153037	2	{00000}-0	TIRE
*23	153038	2	{00000}-1	TUBE, 4.00 x 8
*24	171270	2	{00000}-1	VALVE STEM & CAP
*25	1608382	1	{00000}-0	WHEEL, Rear, L.H.
*26	1608383	1	{00000}-1	WHEEL & TIRE ASSY, Rear, R.H.
*27	1608384	1	{00000}-1	WHEEL ASSY, Rear, R.H.
28	1609276	1	{00000}-1	IGNITION, Interlock
29	1609277	1	{00000}-1	LEAD, Switch, Interlock
30	1609279	2	{00000}-1	SWITCH, Safety
31	1609280	1	{00000}-1	GUIDE, Shift Rod
32	1656740	1	{00000}-0	ENGINE BASE & BUSHING ASSY
33	156064	2	{00000}-1	BUSHING
34	158337	2	{00000}-1	BUSHING
35	158569	2	{00000}-0	BEARING, Bronze
36	912808	3	{00000}-0	FITTING, Lube, 1/4-28
**37	1608919	1	{00000}-0	WHEEL & TIRE ASSY, Rear, L.H.
**38	159156	2	{00000}-1	TIRE
**39	1603991	2	{00000}-1	TUBE, 16 x 6-1/2 x 8
**40	156305	2	{00000}-1	VALVE STEM & CAP
**41	1608917	1	{00000}-1	WHEEL, Rear, L.H.
**42	1608918	1	{00000}-1	WHEEL & TIRE ASSY, Rear, R.H.
**43	1608916	1	{00000}-1	WHEEL ASSY, Rear, L.H.

NOTE: * Used Only On Mfg. No. 1690240

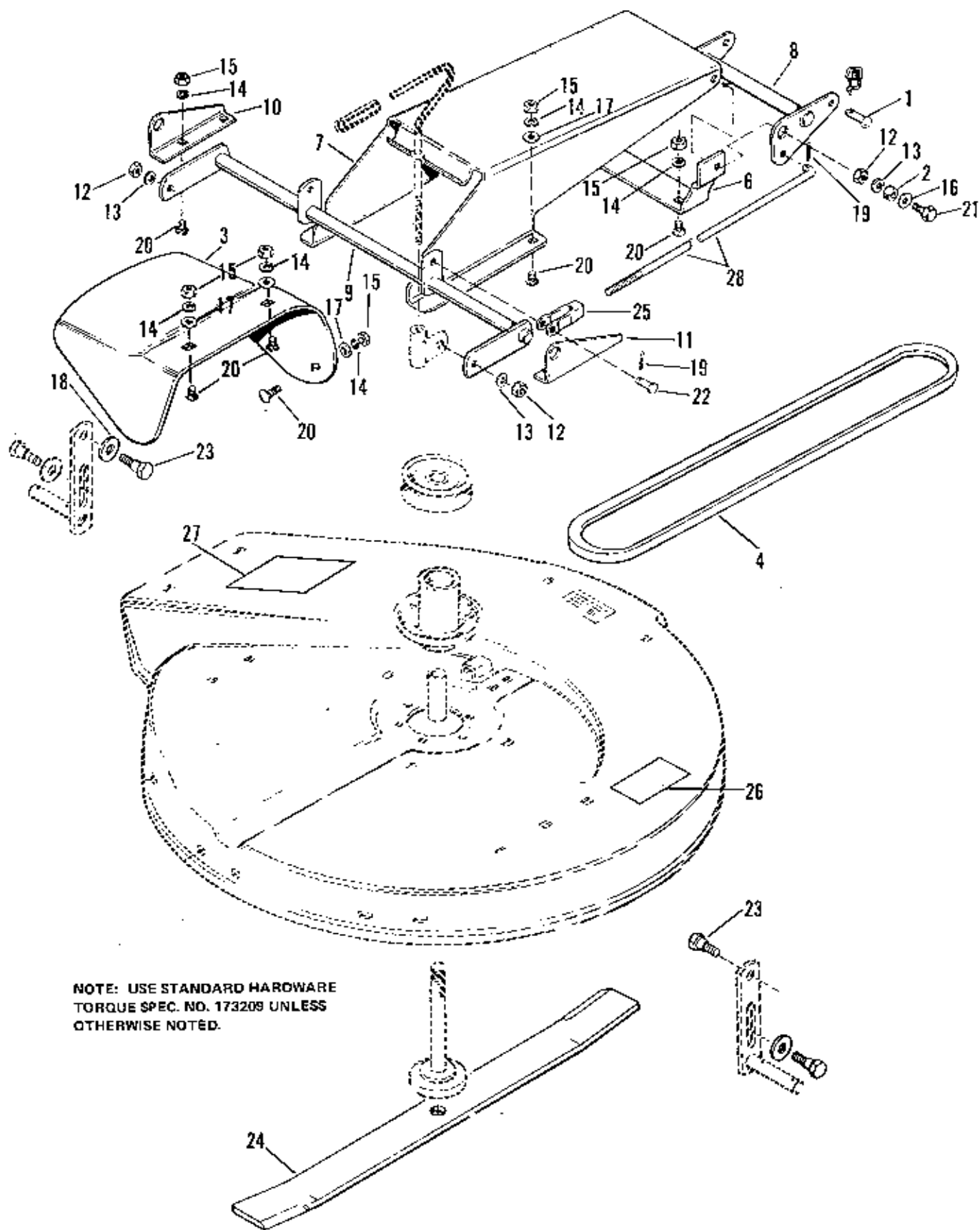
** Used Only On Mfg. No. 1690242



Housing, Arbor & Roller Sub Group

77-1

Ref. No.	Part No.	Qty.	Serial No.	Description
1	108431	1	{00000}-{ }	ROLLER SUB ASSY
2	1608664	1	{00000}-{ }	TUBE ASSY, Arbor
3	917366	12	{00000}-{ }	LOCKWASHER, Spring, 5/16
4	917372	12	{00000}-{ }	NUT, Hex, 5/16-18
5	919413	6	{00000}-{ }	BOLT, Rd Hd., Sq, 5/16-18 x 5/8
6	924940	1	{00000}-{ }	WASHER, Plain, 3/8
7	1602155	2	{00000}-{ }	RING, E
8	1603204	1	{00000}-{ }	BRACKET, Center, Roller
9	1603205	1	{00000}-{ }	SHAFT, Center, Roller
10	1605745	1	{00000}-{ }	WASHER, Shoulder
11	1605746	1	{00000}-{ }	WASHER, Belleville
12	916950	2	{00000}-{ }	NUT, Hex, 3/8-16
13	916965	2	{00000}-{ }	LOCKWASHER, Spring, 3/8
14	918430	2	{00000}-{ }	WASHER, Plain, 7/16
15	918458	4	{00000}-{ }	PIN, Cotter, 3/16 x 1
16	919387	4	{00000}-{ }	WASHER, Plain, 5/8
17	1602186	2	{00000}-{ }	BOLT, Shoulder
18	1602211	2	{00000}-{ }	BRACKET, Roller Support
19	1603206	2	{00000}-{ }	ROLLER ASSY (Includes 2 of Ref. No. 20)
20	108419	6	{00000}-{ }	BUSHING
21	1602265	1	{00000}-{ }	SPACER
22	1607603	2	{00000}-{ }	SHAFT ASSY, Roller
23	918448	1	{00000}-{ }	PIN, Cotter
24	108172	1	{00000}-{ }	PIVOT
25	176775	1	{00000}-{ }	HANDLE, Adjusting
26	176777	1	{00000}-{ }	GUIDE ASSY, Rod
27	176985	1	{00000}-{ }	GRIP
28	1655071	1	{00000}-{ }	ARBOR & HOUSING ASSY (Includes Ref. No.'s 2-4, 21 & 29-43)
29	917642	6	{00000}-{ }	WASHER, Plain, 5/16
30	921332	6	{00000}-{ }	CAPSCREW, Hex Hd., 5/16-18 x 3/4
31	1602181	1	{00000}-{ }	HOUSING, 26" Mower
32	1606933	1	{00000}-{ }	CAPSCREW, 1/2-20 x 1-1/2
33	103268	1	{00000}-{ }	ARBOR & TUBE ASSY (Includes Ref. No.'s 2, 21 & 33-43)
34	108257	1	{00000}-{ }	WASHER
35	108472	3	{00000}-{ }	WASHER
36	174603	1	{00000}-{ }	ARBOR ASSY
37	174910	1	{00000}-{ }	PULLEY, Mower
38	918312	1	{00000}-{ }	KEY, Woodruff, No. 61
39	922133	1	{00000}-{ }	NUT, Hex, Lock, 3/4-16
40	1653481	1	{00000}-{ }	SPACER
41	1655073	1	{00000}-{ }	TUBE ASSY, w/Bearings
42	108134	1	{00000}-{ }	RING, Backing
43	108202	2	{00000}-{ }	BEARING, Ball

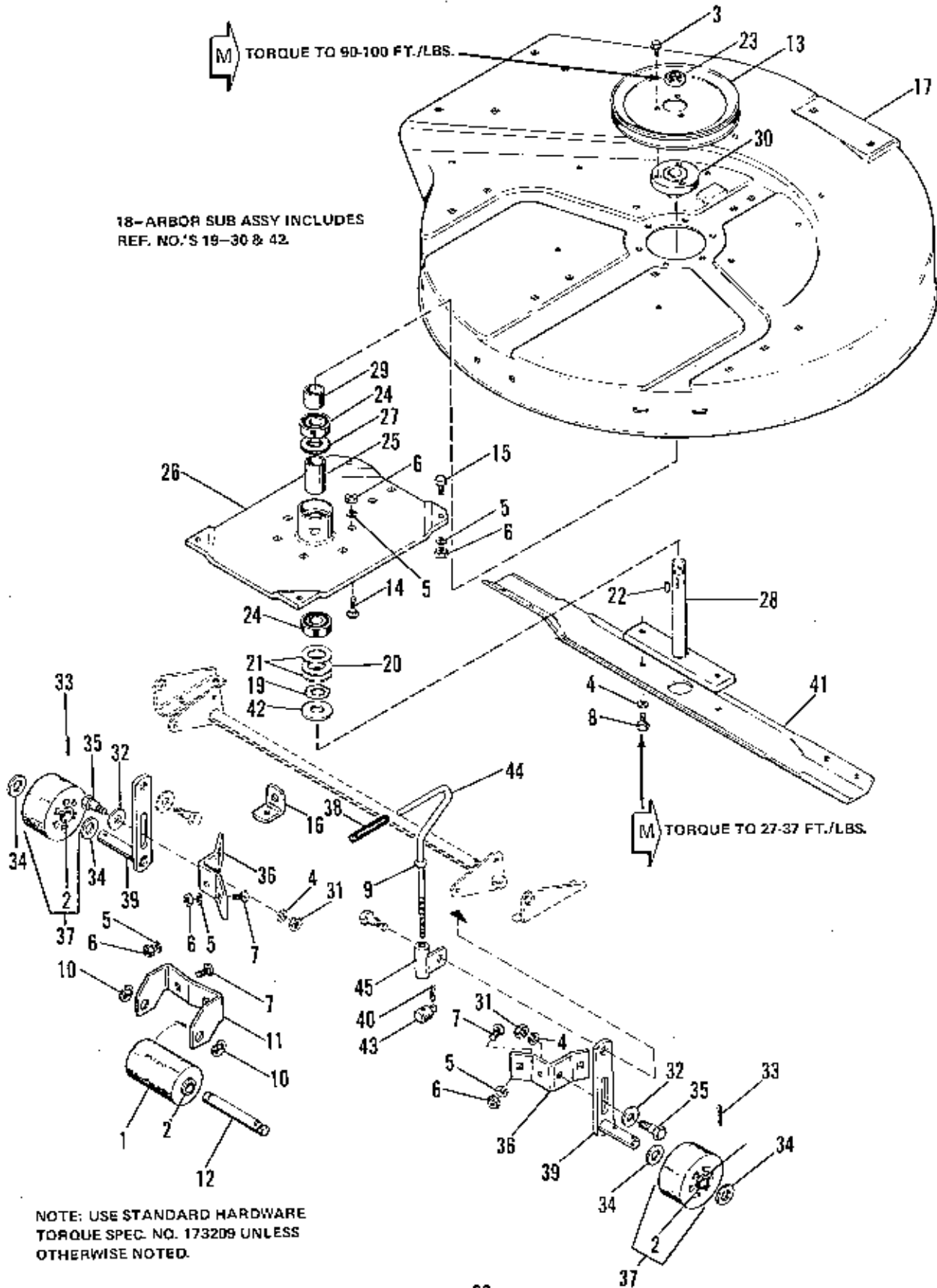


**NOTE: USE STANDARD HARDWARE
TORQUE SPEC. NO. 173209 UNLESS
OTHERWISE NOTED.**

Controls, Linkage, Deflector & Misc. Group

77-1

Ref. No.	Part No.	Qty.	Serial No.	Description
1	105249	2	{00000}-{ }	PIN
2	153081	2	{00000}-{ }	SPACER
3	174820	1	{00000}-{ }	DEFLECTOR
4	174811	1	{00000}-{ }	BELT, V
5	176012	2	{00000}-{ }	CLIP, Pin, Safety
6	176737	1	{00000}-{ }	BRACKET
7	176738	1	{00000}-{ }	COVER, Belt
8	176763	1	{00000}-{ }	BELLCRANK ASSY
9	176765	1	{00000}-{ }	LEVER ASSY
10	176769	1	{00000}-{ }	BRACKET,Pivot, L.H.
11	176770	1	{00000}-{ }	BRACKET,Pivot, R.H.
12	916950	4	{00000}-{ }	NUT, Hex, 3/8-18
13	916965	4	{00000}-{ }	LOCKWASHER, Spring, 3/8
14	917356	13	{00000}-{ }	LOCKWASHER, Spring, 5/16
15	917372	13	{00000}-{ }	NUT, Hex, 5/16-18
16	917378	2	{00000}-{ }	WASHER, Plain, 3/8
17	917642	3	{00000}-{ }	WASHER, Plain, 5/16
18	918430	1	{00000}-{ }	WASHER, Plain, 7/16
19	918448	4	{00000}-{ }	PIN, Cotter, 3/32 x 1
20	919413	13	{00000}-{ }	BOLT, Rd. Hd., Sq. Nk., 5/16-18 x 5/8
21	921210	2	{00000}-{ }	CAPSCREW, Hex Hd., 3/8-16 x 1
22	923087	2	{00000}-{ }	PIN, Yoke, 3/8
23	1602186	2	{00000}-{ }	BOLT, Shoulder
24	1607534	1	{00000}-{ }	BLADE, Mower
25	108157	1	{00000}-{ }	CLLVIS, Adjusting
26	1656856	1	{00000}-{ }	DECAL, Danger
27	1656857	1	{00000}-{ }	DECAL, Danger
28	176768	1	{00000}-{ }	ROD, Height Adjusting

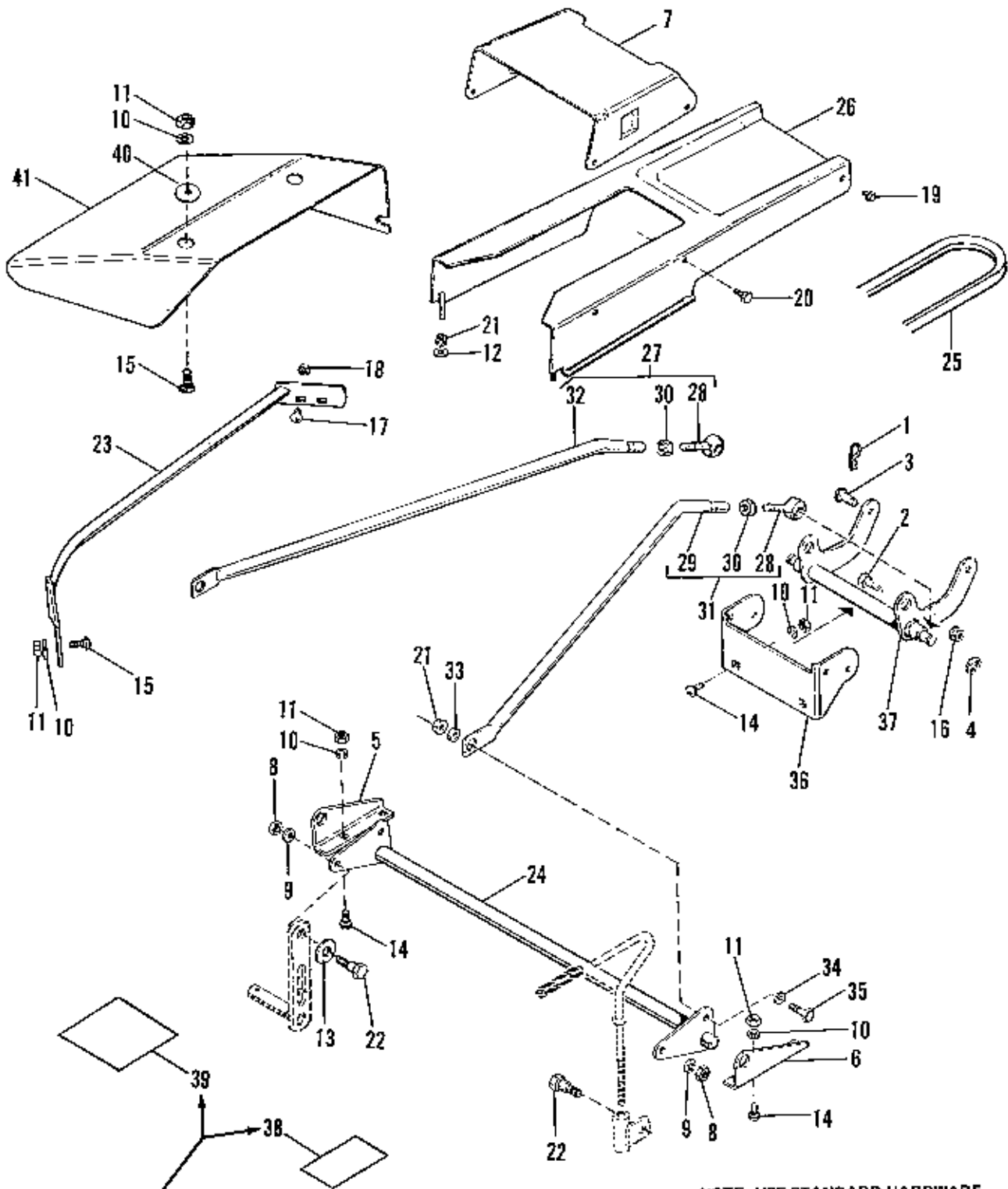


Housing, Arbor & Roller Sub Group

77-1

Ref. No.	Part No.	Qty.	Serial No.	Description
1	108431	1	{00000}-[]	ROLLER
2	108419	6	{00000}-[]	BUSHING
3	177932	3	{00000}-[]	SCREW, Thd. Forming
4	916965	4	{00000}-[]	LOCKWASHER, Spring, 3/8
5	917356	14	{00000}-[]	LOCKWASHER, Spring, 5/16
6	917372	14	{00000}-[]	NUT, Hex, 5/16-18
7	919413	6	{00000}-[]	BOLT, Carriage, 5/16-18 x 5/8
8	923490	2	{00000}-[]	CAPSCREW, Hex Hd., 3/8-16 x 1
9	924940	1	{00000}-[]	WASHER, Plain, 3/8
10	1602155	2	{00000}-[]	RING, E
11	1603204	1	{00000}-[]	BRACKET, Center, Roller
12	1603205	1	{00000}-[]	SHAFT, Center, Roller
13	1608959	1	{00000}-[]	PULLEY, Mower
14	921158	6	{00000}-[]	BOLT, Carriage, 5/16-18 x 1
15	921333	2	{00000}-[]	CAPSCREW, Hex Hd., 5/16-18 x 1
16	1602445	2	{00000}-[]	CLIP, Spring Anchor
17	1608351	1	{00000}-[]	HOUSING, 30" Mower
18	1651034	1	{00000}-[]	ARBOR SUB-ASSY
19	108181	1	{00000}-[]	WASHER
20	108257	1	{00000}-[]	WASHER
21	108472	2	{00000}-[]	WASHER
22	918312	1	{00000}-[]	KEY, Woodruff, No. 61 - 3/16 x 5/8
23	922133	1	{00000}-[]	NUT, Hex, Lock, 3/4-16
24	108202	2	{00000}-[]	BEARING, Ball
25	176984	1	{00000}-[]	SPACER
26	1651298	1	{00000}-[]	TUBE ASSY, Arbor
27	108134	1	{00000}-[]	RING, Backing
28	1651293	1	{00000}-[]	ARBOR ASSY
29	1651295	1	{00000}-[]	SPACER
30	1651404	1	{00000}-[]	HUB, Pulley
31	916950	2	{00000}-[]	NUT, Hex, 3/8-16
32	918430	2	{00000}-[]	WASHER, Plain, 7/16
33	918458	4	{00000}-[]	PIN, Cotter, 3/16 x 1
34	919387	4	{00000}-[]	WASHER, Plain, 5/8
35	1602185	2	{00000}-[]	BOLT, Shoulder
36	1602211	2	{00000}-[]	BRACKET, Roller Support
37	1603206	2	{00000}-[]	ROLLER ASSY
38	176985	1	{00000}-[]	GRIP
39	1607603	2	{00000}-[]	SHAFT ASSY, Roller
40	918448	1	{00000}-[]	PIN, Cotter, 3/32 x 1
41	1651297	1	{00000}-[]	BLADE, 30" Mower
42	108182	1	{00000}-[]	WASHER, Arbor
43	108172	1	{00000}-[]	PIVOT
44	176775	1	{00000}-[]	HANDLE, Adjusting
45	176777	1	{00000}-[]	GUIDE ASSY, Rod

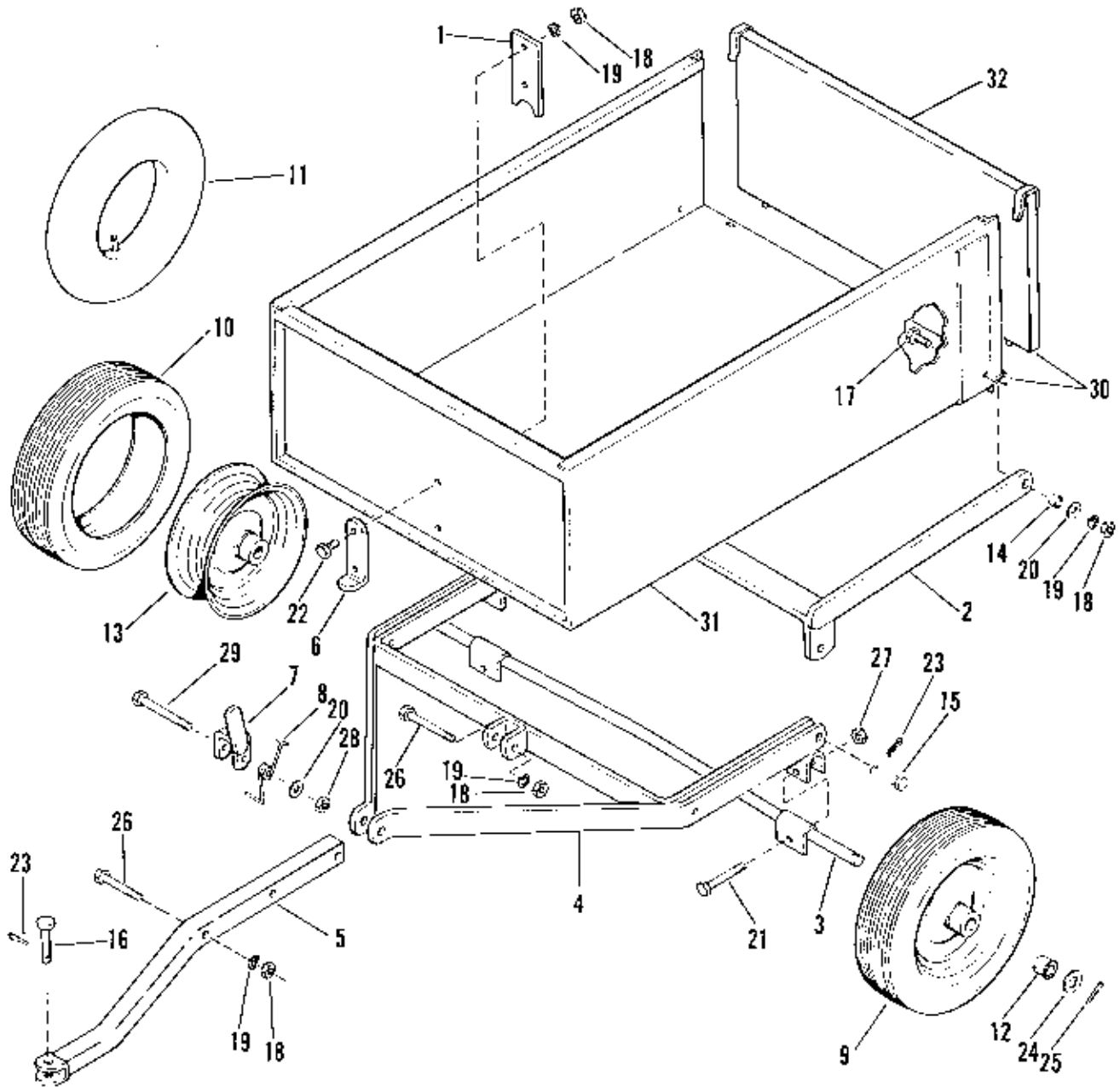
For Service of Mower Arbor, Order Kit No. 1685006
(Includes Ref. No's 18-30, 41 & 42).



DANGER DECALS (REF. NO. S 38 & 39) ARE LOCATED ON THE MOWER DECK.

NOTE: USE STANDARD HARDWARE TORQUE SPEC. NO. 173209 UNLESS OTHERWISE NOTED.

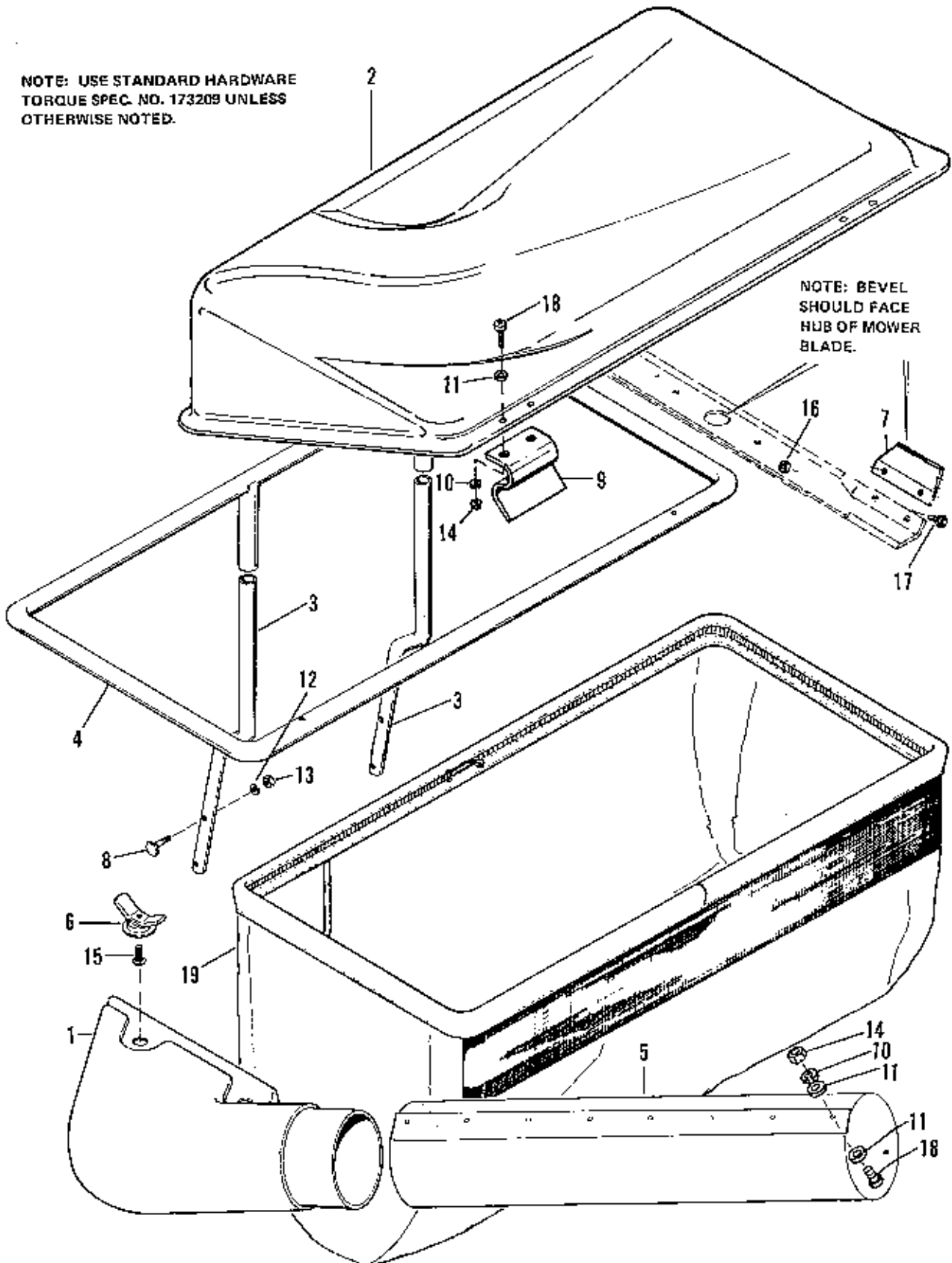
Ref. No.	Part No.	Qty.	Serial No.	Description
1	106788	2	{00000}-{ }	SPRING, Clip
2	108711	2	{00000}-{ }	BOLT, Shoulder, Hex Hd., 3/8-16 x 3/4
3	156306	2	{00000}-{ }	PIN
4	158399	2	{00000}-{ }	RING, Retaining
5	176769	1	{00000}-{ }	BRACKET, Pivot, L.H.
6	176770	1	{00000}-{ }	BRACKET, Pivot, R.H.
7	176791	1	{00000}-{ }	COVER, Upper
8	916950	2	{00000}-{ }	NUT, Hex, 3/8-16
9	916955	2	{00000}-{ }	LOCKWASHER, Spring, 3/8
10	917356	10	{00000}-{ }	LOCKWASHER, Spring, 5/16
11	917372	10	{00000}-{ }	NUT, Hex, 5/16-18
12	917642	4	{00000}-{ }	WASHER, Plain, 5/16
13	918430	1	{00000}-{ }	WASHER, Plain, 7/16
14	919413	6	{00000}-{ }	BOLT, Carriage, 5/16-18 x 5/8
15	920562	4	{00000}-{ }	BOLT, Carriage, 5/16-18 x 3/4
16	923428	2	{00000}-{ }	NUT, Hex, Full Lock, 3/8-16
17	923700	2	{00000}-{ }	BOLT, Carriage, 5/16-18 x 1/2
18	928698	2	{00000}-{ }	NUT, Hex, Lock, Jam, 5/16-18
19	928730	2	{00000}-{ }	SCREW, Hex, Wash. Hd., Taprite, 3/8-16 x 1/2
20	929000	2	{00000}-{ }	SCREW, Hex, Wash. Hd., Taprite, 1/4-20 x 3/8
21	919001	4	{00000}-{ }	NUT, Flange, Lock, 5/16-18
22	1602186	2	{00000}-{ }	BOLT, Shoulder
23	1608374	1	{00000}-{ }	GUARD ASSY, Stone, 30" Mower
24	1608949	1	{00000}-{ }	CONTROL ARM ASSY, Mower Housing
25	1608957	1	{00000}-{ }	BELT, Mower, Drive
26	1609032	1	{00000}-{ }	COVER ASSY, Lower
27	1652861	1	{00000}-{ }	ARM ASSY, Adjusting, R.H.
28	157215	2	{00000}-{ }	EYEBOLT
29	176736	1	{00000}-{ }	ARM, Adjusting, R.H.
30	919262	2	{00000}-{ }	NUT, Hex, Jam, 1/2-20
31	1652862	1	{00000}-{ }	ARM ASSY, Adjusting, L.H.
32	175942	1	{00000}-{ }	ARM, Adjusting, L.H.
33	153081	2	{00000}-{ }	SPACER
34	917378	2	{00000}-{ }	WASHER, Plain, 3/8
35	921210	2	{00000}-{ }	CAPSCREW, Hex Hd., 3/8-16 x 1
36	1608940	1	{00000}-{ }	BRACKET, Mower
37	1608947	1	{00000}-{ }	ARM ASSY, Link
38	1656856	1	{00000}-{ }	DECAL, Danger
39	1656857	1	{00000}-{ }	DECAL, Danger
40	8161199	2	{00000}-{ }	WASHER
41	1651492	1	{00000}-{ }	DEFLECTOR



NOTE: USE STANDARD HARDWARE
TORQUE SPEC. NO. 173209 UNLESS
OTHERWISE NOTED.

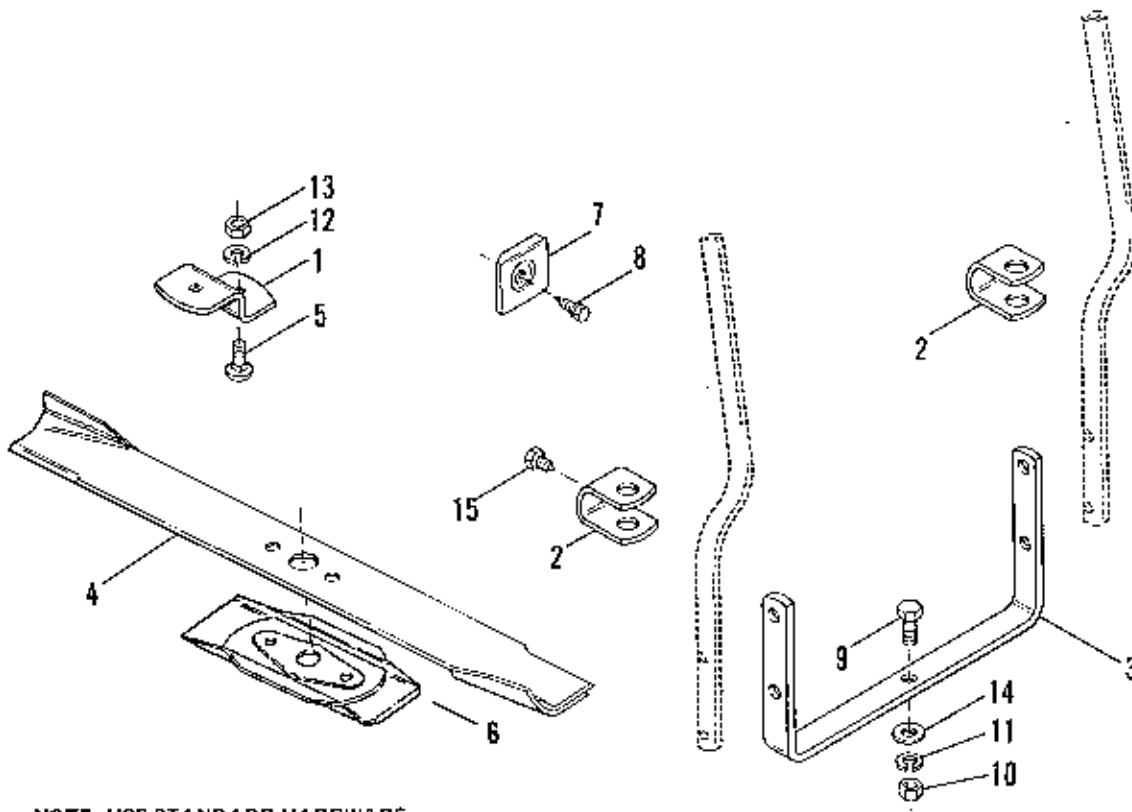
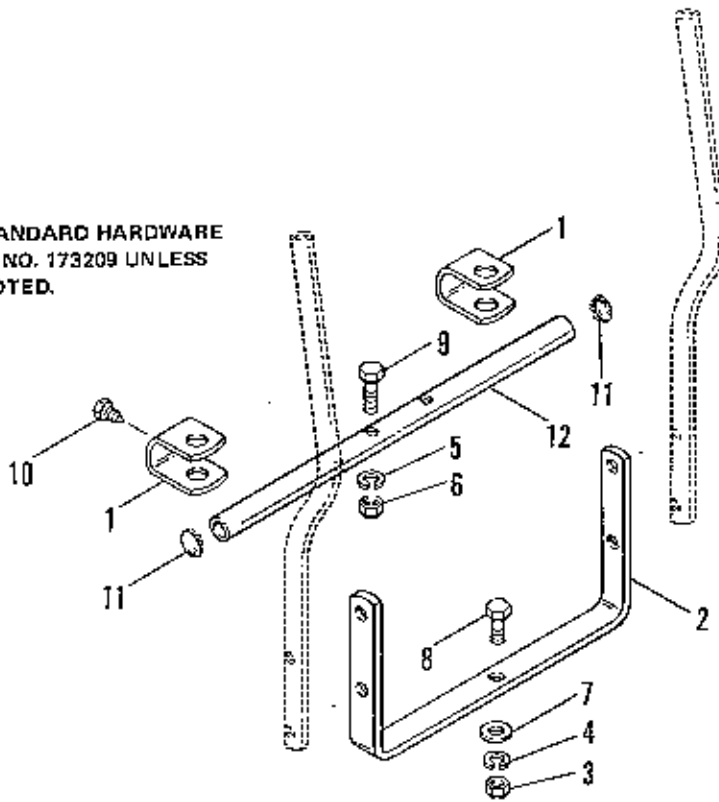
Ref. No.	Part No.	Qty.	Serial No.	Description
1	102005	1	(00000)-()	PLATE, Box Guide
2	102024	1	(00000)-()	PIVOT, Box Assy.
3	102027	1	(00000)-()	AXLE ASSEMBLY
4	102035	1	(00000)-()	FRAME ASSEMBLY
5	102037	1	(00000)-()	TONGUE ASSEMBLY
6	102040	1	(00000)-()	PLATE, Box Catch
7	102051	1	(00000)-()	CLEVIS ASSEMBLY
8	102075	1	(00000)-()	SPRING, Torsion
9	170320	2	(00000)-()	WHEEL & TIRE ASSEMBLY
10	102052	2	(00000)-()	TIRE
11	153038	2	(00000)-()	TUBE, 4.00 x 8
12	156316	4	(00000)-()	BEARING
13	170319	2	(00000)-()	WHEEL
14	8151076	2	(00000)-()	BUSHING
15	102004	2	(00000)-()	PIN, Pivot
16	105249	1	(00000)-()	PIN
17	907731	2	(00000)-()	CAPSCREW, Hex, 3/8-16 x 1
18	916950	6	(00000)-()	NUT, Hex Full, 3/8-16
19	916965	6	(00000)-()	LOCKWASHER, 3/8
20	917378	3	(00000)-()	WASHER, 3/8
21	917398	2	(00000)-()	CAPSCREW, 5/16-18 x 1 3/4
22	917400	2	(00000)-()	CAPSCREW, Hex, 3/8-16 x 1 1/4
23	918196	3	(00000)-()	PIN, Quick
24	918433	2	(00000)-()	WASHER, Plain, 3/4
25	918459	2	(00000)-()	PIN, Cotter, 3/16 x 1 1/2
26	919362	2	(00000)-()	CAPSCREW, Hex, 3/8-16 x 2 1/4
27	923362	2	(00000)-()	NUT, Hex Full, 5/16-18
28	923428	1	(00000)-()	NUT, Hex Full, 3/8-16
29	930596	1	(00000)-()	CAPSCREW, Hex, 3/8-16 x 2 3/4
30	1655704	1	(00000)-()	TRAILER & END GATE ASSY.
31	102002	1	(00000)-()	BODY, Trailer
32	102003	1	(00000)-()	GATE END

NOTE: USE STANDARD HARDWARE
TORQUE SPEC. NO. 173209 UNLESS
OTHERWISE NOTED.



Ref. No.	Part No.	Qty.	Serial No.	Description
1	178871	1	(00000)-()	ADAPTOR
2	177019	1	(00000)-()	COVER
3	177096	2	(00000)-()	SUPPORT, Vertical
4	178364	1	(00000)-()	SUPPORT ASSY
5	1650438	1	(00000)-()	TUBE, Intake
6	123103	2	(00000)-()	NUT ASSY
7	177243	2	(00000)-()	PLATE, Lift
8	177249	4	(00000)-()	BOLT, Curved Head
9	178609	4	(00000)-()	CLIP
10	909055	17	(00000)-()	LOCKWASHER, No. 10, 3/16, Internal Tooth
11	916955	26	(00000)-()	WASHER, Plain, 3/16
12	917356	4	(00000)-()	LOCKWASHER, Spring, 5/16
13	917372	4	(00000)-()	NUT, Hex, 5/16-18
14	917415	17	(00000)-()	NUT, Hex, Mach. No. 10-32
15	920563	2	(00000)-()	BOLT, Carriage, 5/16-18 x 1
16	923362	4	(00000)-()	NUT, Hex, Lock, 5/16-18
17	925205	4	(00000)-()	CAPSCREW, Hex Hd., 5/16-18 x 5/8
18	930531	17	(00000)-()	SCREW, Truss Hd., No. 10-32 x 1/2
19	1655506	1	(00000)-()	GRASS BAG

NOTE: USE STANDARD HARDWARE
TORQUE SPEC. NO. 173209 UNLESS
OTHERWISE NOTED.



NOTE: USE STANDARD HARDWARE
TORQUE SPEC. NO. 173209 UNLESS
OTHERWISE NOTED.

30" Grass Catcher Adapter Kit

77-1

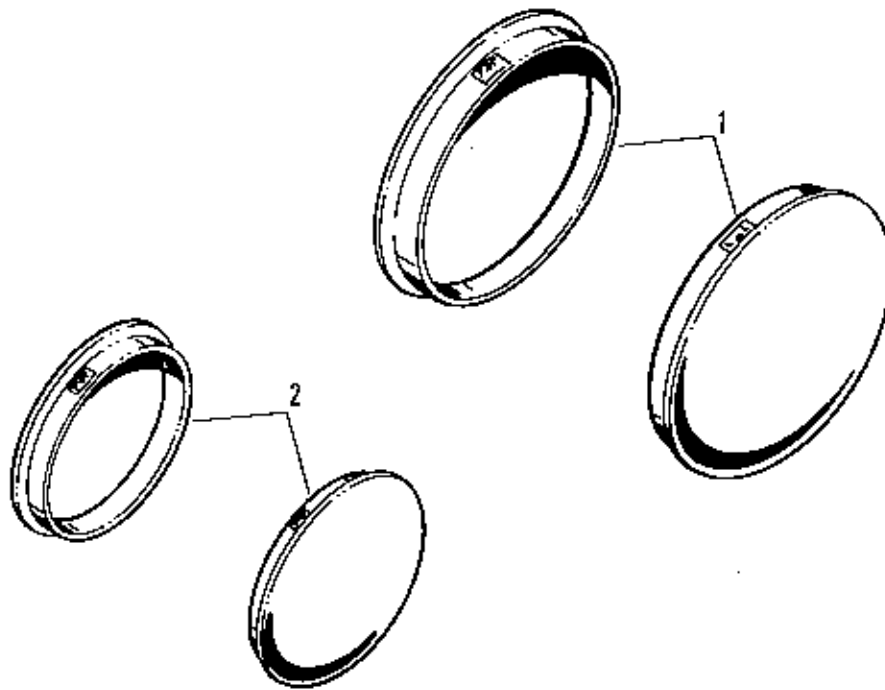
Ref. No.	Part No.	Qty.	Serial No.	Description
1	177391	2	{00000}-{ }	CLAMP
2	177392	1	{00000}-{ }	SUPPORT, Bracket
3	916950	1	{00000}-{ }	NUT, Hex, 3/8-16
4	916965	1	{00000}-{ }	LOCKWASHER, Spring, 3/8
5	917356	2	{00000}-{ }	LOCKWASHER, Spring, 5/16
6	917372	2	{00000}-{ }	NUT, Hex, 5/16-18
7	917378	1	{00000}-{ }	WASHER, Plain, 3/8-18
8	921210	1	{00000}-{ }	CAPSCREW, Hex Hd., 3/8-16 x 1
9	921221	2	{00000}-{ }	CAPSCREW, Hex Hd., 5/16-18 x 1-1/2
10	927428	2	{00000}-{ }	SCREW, Hex, Wshr. Hd., Taprite, 1/4-20 x 3/8
11	1608835	2	{00000}-{ }	PLUG, Button
12	1611463	1	{00000}-{ }	TUBE, Rear

Mfg. No. 1600333

26" Grass Catcher Adapter Kit

77-1

Ref. No.	Part No.	Qty.	Serial No.	Description
1	177389	1	{00000}-{ }	SUPPORT, Adapter
2	177391	2	{00000}-{ }	CLAMP
3	177392	1	{00000}-{ }	SUPPORT, Bracket
4	177394	1	{00000}-{ }	BLADE ASSY
5	930686	1	{00000}-{ }	BOLT, Carriage, 5/16-18 x 5/8
6	177395	1	{00000}-{ }	STIFFNER, Blade
7	177497	1	{00000}-{ }	DEFLECTOR, Muffler
8	177498	1	{00000}-{ }	SCREW
9	907731	1	{00000}-{ }	CAPSCREW, Hex Hd., 3/8-16 x 1
10	916950	1	{00000}-{ }	NUT, Hex, 3/8-16
11	916965	1	{00000}-{ }	LOCKWASHER, Spring, 3/8
12	917356	1	{00000}-{ }	LOCKWASHER, Spring, 5/16
13	917372	1	{00000}-{ }	NUT, Hex, 5/16-18
14	917378	1	{00000}-{ }	WASHER, Plain, 3/8
15	922123	2	{00000}-{ }	SCREW, Thd. Cutting, Hex Hd., 1/4-20 x 3/8



Mfg. No. 1600238




Hub Caps - Wonderboy

Simplicity

Ref. No.	Part No.	Qty.	Serial No.	Description
	156211	2	(00000)-()	CAP, Front Hub
	163114	2	(00000)-()	CAP, Hub

TORQUE SPECIFICATIONS FOR STANDARD MACHINE HARDWARE

TOLERANCE $\pm 10\%$

SIZE	SAE GRADE #2		SAE GRADE #5		SAE GRADE #8	
						
8-32	19	In. Lbs.	30	In. Lbs.	41	In. Lbs.
8-36	20	"	31	"	43	"
10-24	27	"	43	"	60	"
10-32	31	"	49	"	68	"
1/4-20	66	"	8	Ft. Lbs	12	Ft. Lbs.
1/4-28	76	"	10	"	14	"
5/16-18	11	Ft. Lbs	17	"	25	"
5/16-24	12	"	19	"	25	"
3/8-16	20	"	30	"	45	"
3/8-24	23	"	35	"	50	"
7/16-14	30	"	50	"	70	"
7/16-20	35	"	55	"	80	"
1/2-13	50	"	75	"	110	"
1/2-20	55	"	90	"	120	"
9/16-20	65	"	110	"	150	"
9/16-18	75	"	120	"	170	"
5/8-11	90	"	150	"	220	"
5/8-18	100	"	180	"	240	"
3/4-10	160	"	260	"	386	"
3/4-16	180	"	300	"	420	"
7/8-9	140	"	400	"	600	"
7/8-14	155	"	440	"	660	"
1-8	220	"	580	"	900	"
1-12	240	"	640	"	1,000	"

NOTES:

1. These torque values are to be used for all Simplicity hardware excluding: locknuts, self-tapping screws, thread forming screws, and sheet metal screws.
2. Unless otherwise noted on assembly drawings all torque values must meet this specification.

BOLT HEAD MARKING

S.A.E. GRADE:

2 

5 

8 

