

Simplicity

5 GANG MOWER

ARTICLE 275

TO ASSEMBLE HITCH

1. Attach Tie Irons (Ref. No. 25) to the Studs on Side Plates of two Cutting Units, using Flat Washers and Cotter Pins provided.
2. Attach one Swivel Hitch Shaft (Ref. No. 29) to the front of each set of Tie Irons, using Pins (Ref. No. 27). The Flat Washers go to the outside of Tie Irons. Secure with Cotter Pins.
3. Attach Rear Draw Bar (Ref. No. 18) to a third Cutting Unit. Mount the Rear Draw Bar with the flat side down—over the Rear Tie Rod of mower. NOTE: The two center holes in the Draw Bar are offset to one side and the Bar should be placed with these holes toward front of mower. Attach with two "J" Bolts (Ref. No. 21). The "J" Bolts should be on the front side of the Tie Bar. Attach with Lock Washer and Hex Nut.
4. The two mowers with Tie Irons attached should now be assembled to Rear Draw Bar (Ref. No. 18). Attach a mower to each end of Rear Draw Bar.
5. The Front Draw Bar should now be assembled. Attach the three Front Tie Irons (Ref. Nos. 8, 9 and 10) to the Front Center Draw Bar (Ref. No. 1) using the Nuts and Lock Washers provided. Attach Clevis Hitch (Ref. No. 11) to front of Tie Irons using Cap Screw and two Hex Nuts. NOTE: Tighten first Hex Nut just tight enough that Clevis Hitch can still turn and tighten second Hex Nut tight against first Nut.
6. Attach Front Center Draw Bar Connecting Links (Ref. No. 4) to Studs on Side Plates of center mower, using Flat Washers and Cotter Pins.
7. Remove the two remaining mowers from cartons and place one at each end of front center mower. Attach Front Draw Bar—R. H. Side (Ref. No. 2) and Front Draw Bar—L.H. Side (Ref. No. 3) to mowers. Attach Right and Left Draw Bars to Center Draw Bar with Pins (Ref. No. 7).

TO USE IN SMALL AREAS

This unit can be converted to a 3 Gang Mower. The two outside mowers are easily detached.

LUBRICATION

Each Mower is equipped with four Alemite Zerk fittings (one fitting on each Side Plate and one fitting on each wheel stud). Use regular Alemite grease or equal for these fittings and use a good grade of oil on Wood Roller and all moving parts of Hitch. Your Mowers should be kept thoroughly lubricated. The Drive Pinions are lubricated through the Reel Bearing fittings and it is not necessary to remove Drive Wheels to lubricate these Pinions.

ADJUSTMENT OF CUTTING UNIT

The revolving knives should touch the bottom knife lightly from end to end. The bottom knife can be brought closer to the revolving knives by the use of two cutter bar adjusting screws located at each end of cutter bar. First loosen very slightly the front jam nut and adjusting screw at each end, then loosen jam nut on rear screws and tighten the rear screws until the cutter bar touches the reel. Be sure that all four screws and jam nuts are tight after adjustment is made.

DO NOT ADJUST MOWER TOO TIGHTLY . . .

If the bottom knife and reel knives are rubbing too tightly together the reel knives will wear irregularly and cause excessive wear. If reel is too tight, loosen the two rear screws and tighten the two front screws until proper adjustment is obtained. If the reel has become badly nicked and requires grinding, send the mower to a competent repair man for proper attention.

CUTTING HEIGHTS

With wheels in "Low" position, the cutting heights are from 1" to 2-1/8". When wheels are in "High" position, the cutting heights are from 1-7/8" to 3". Adjustment of roller gives many heights in either position.

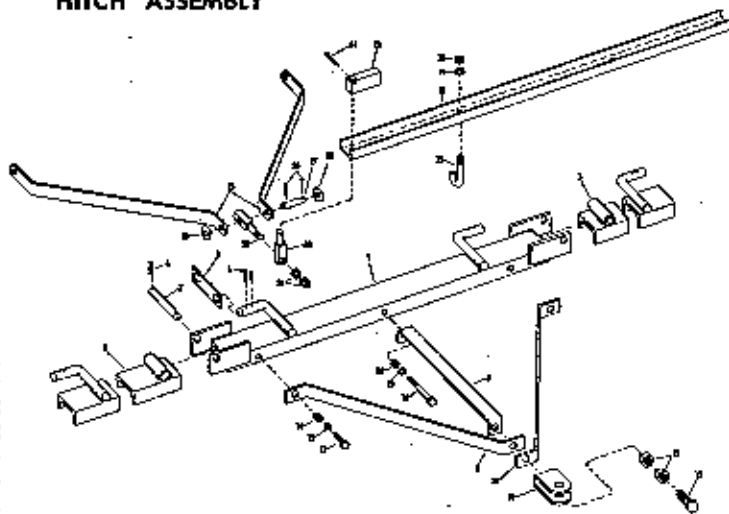
To change cutting heights, move wheels to other position. Turn mower on side, remove hex nut and lock washer on wheel stud. Pull wheel stud just out of sideplate (do not remove) and slide cover and wheel to other position and push wheel stud through sideplate hole. Replace lock washer and hex nut and tighten securely. If the pinion and pawl are removed from the shaft, be sure they are replaced properly. When the pinion and pawl are in proper position the wheel will roll backwards freely and turn the spiral cutter when moved forward. Keep nut on wheel stud tight.

TO ORDER REPAIR PARTS SUPPLY THE FOLLOWING:

1. Quantity wanted.
 2. The part number and name of part. (Not reference number).
 3. Model Number. (See Model Number at top of this page).
 4. Your name and address. (Please Print).
- Parts ordered will be sent C.O.D. If you wish estimate of cost, send list of parts and we will send quotation.

DO NOT RETURN GANG MOWERS TO THE FACTORY UNLESS YOU HAVE A LETTER AUTHORIZING YOU TO DO SO.

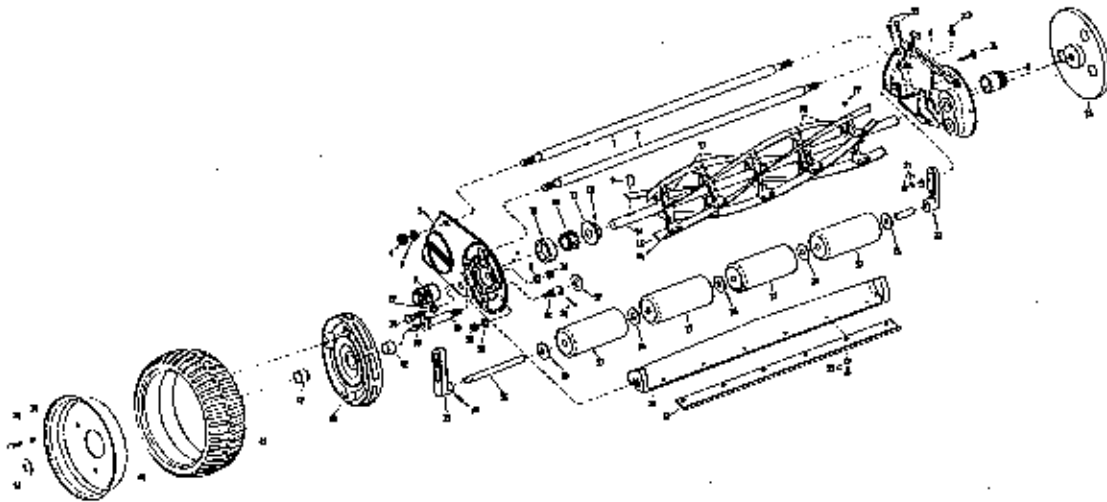
HITCH ASSEMBLY



(Parts List Continued)

Ref. No.	Part No.	Description
1	100125	Front Draw Bar w/Spindles-Center
2	100126	Front Draw Bar w/Spindles-RH Side
3	100127	Front Draw Bar w/Spindles-LH Side
4	100128	Connecting Link - Spindle
5	100129	Cotter Pin
6	100130	Hair Pin Cotter for Channel Pivot Pin
7	100131	Pin, Channel Pivot
8	100132	Tie Iron, Center, Front Hitch
9	100133	Tie Iron, RH, Front Hitch
10	100134	Tie Iron, LH, Front Hitch
11	100135	Swivel Hitch, Front
12	717004	Hex Nut
13	100136	Cap Screw
14	717013	Hex Nut
15	720002	Lock Washer
16	100138	Cap Screw

Ref. No.	Part No.	Description
17	705005	Cap Screw
18	100121	Rear Draw Bar
19	720004	Lock Washer
20	717017	Hex Nut
21	100120	J Bolt for Draw Bar
22	100139	Lock Nut
23	100157	Swivel Stop
24	100158	Cotter Pin, 3/16" x 1-1/4" lg.
25	100116	Tie Iron, R. or L.
26	100108	Cotter Pins
27	100117	Pin for Swivel Shafts and Tie Irons
28	100110	Flat Washer
29	100159	Tie Irons
30	100160	Shaft, Swivel Hitch
31	100161	Hex Nut, 1/2"-13
32	8181008	Pin w/clip (not illustrated)



Ref. No.	Part No.	Description
1	100081	Tie Rod for Rear
2	100082	Tie Rod for Front
3	720004	Lock Washer
4	717017	Hex Nut
5	100146	Side Plate, R.H.
6	100147	Side Plate, L.H.
7	100086	Pinion, LH (From Front of Mower)
8	100085	Pinion, RH (From Front of Mower)
9	100087	Pawl
10	100088	Bearing Cup for Spiral Cutter
11	100089	Bearing for Spiral Cutter
12	100090	Collar for Spiral Cutter Shaft
13	713503	Allen Set Screw for Collar
14 to 15	100148	Spiral Cutter with Shaft
14		Shaft for Spiral Cutter
15		Knife for Spiral Cutter
16		Rivet for Spider
17		Spider, RH, for Spiral Cutter
18		Spider, LH, for Spiral Cutter
19	100097	Set Screw for Spider
20	727002	Zerk Grease Fitting
21	702008	Bolt Assembly for Roller Bracket
	719002	
	720091	
	717001	
22	100098	Roller Bracket, R. or L.
23	100099	Wheel Cover, RH

Ref. No.	Part No.	Description
23	100100	Wheel Cover, LH
24	723011	Roll Pin for Roller Bracket
25	100101	Shaft for Roller
26	719004	Flat Washer for Roller
27	100102	Wood Roller Section (4 Sectional)
28	705042	Pivot Screw for Knife Bar
29	720006	Lock Washer
30 to 32	100103	Bar with Knife
30	100104	Knife Bar
31	100105	Lower Knife
32	101106	Screw Assembly for Lower Knife
	720003	
33	100152	Adjusting Screw for Knife Bar
34	100108	Cotter Pin
35	100109	Wheel Stud Assy., w/Nut & Washers
36	717016	Hex Nut for Wheel Stud
37	100110	Flat Washer
38	705012	Cap Screw for Wheel
39	720001	Lock Washer for Wheel
40	100111	Wheel 1/2 Section
41	100112	Tire for Wheel
42	100113	Bearing for Wheel (2 in ea. Wheel)
43	100114	Hub and Gear for Drive Wheel
44	100115	Stud for Tie Iron
50	717015	Hex Nut for Tie Iron Stud
57	100124	Flat Washer
58	100155	Hex Nut, Jam, 3/8"-24
59	100156	Lock Nut, 1/2"-13