



3 GANG MOWER

ARTICLE 273

Manufactured by: Dille McGuire

INSTRUCTIONS AND PARTS LIST

TO ASSEMBLE HITCH

1. Attach Tie Irons (Ref. Nos. 45 and 53) to the Stud on Side Plate of each Cutting Unit, using Flat Washers and Cotter Pins provided. The Tie Irons with the Transport Hook attached go on the right side of each Cutting Unit as you stand behind them.
2. Attach Swivel Hitch Joint (Ref. No. 47 and 48) to the front of each set of Tie Irons, using Pins (Ref. No. 46). The Flat Washers go to the outside of Tie Irons. Secure with Cotter Pins.
3. Attach Draw Bar (Ref. No. 52) with flat side down over the Rear Tie Rod (Ref. No. 1) of one Mower. NOTE: The two center holes in Draw Bar are offset to one side. The Draw Bar must be placed with the offset holes toward front of the Mower. Attach Draw Bar to Tie Rod with two "J" Bolts (Ref. No. 51). The "J" Bolt should be on front side of Tie Bar. Attach with Lock Washer and Hex Nut.
4. Attach the Swivel Hitch (Ref. No. 47 and 48) of each rear Mower to Draw Bar (Ref. No. 52) of front Mower by inserting Hitch from the underneath side of Draw Bar, attach with Flat Washer and Cotter Pin.

LUBRICATION

Each Mower is equipped with four Alemite Zerk fittings (one fitting on each Side Plate and one fitting on each wheel stud). Use regular Alemite grease or equal for these fittings and use a good grade of oil on Wood Roller and all moving parts of Hitch. Your Mowers should be kept thoroughly lubricated. The Drive Pinions are lubricated through the Reel Bearing fittings and it is not necessary to remove Drive Wheels to lubricate these Pinions.

ADJUSTMENT OF CUTTING UNIT

Your mowers have been adjusted at the factory by skilled workmen and should not need adjustment soon. The revolving knives should touch the bottom knife lightly from end to end. After the mowers have been used for some time it may be necessary to bring the bottom knife closer to the revolving knives to compensate for normal wear. This can be accomplished by the use of two cutter bar adjusting screws located at each end of cutter bar. First loosen very slightly the front adjusting screw at each end, then tighten the rear screws until the cutting bar touches the reel. Be sure that all four screws are tight after adjustment is made.

DO NOT ADJUST MOWER TOO TIGHTLY . . .

If the bottom knife and reel knives are rubbing too tightly together the reel knives will wear irregularly and cause excessive wear. If reel is too tight, loosen the two rear screws and tighten the two front screws until proper adjustment is obtained. If the reel has become badly nicked and requires grinding, send the mower to a competent repair man for proper attention.

CUTTING HEIGHTS

With wheels in "Low" position, the cutting heights are from 1" to 2-1/8". When wheels are in "High" position, the cutting heights are from 1-7/8" to 3". Adjustment of roller gives many heights in either position.

To change cutting heights, move wheels to other position. Turn mower on side, remove hex nut and lock washer on wheel stud. Pull wheel stud just out of sideplate (do not remove) and slide cover and wheel to other position and push wheel stud through sideplate hole. Replace lock washer and hex nut and tighten securely. If the pinion and pawl are removed from the shaft, be sure they are replaced properly. When the pinion and pawl are in proper position the wheel will roll backwards freely and turn the spiral cutter when moved forward. Keep nut on wheel stud tight.

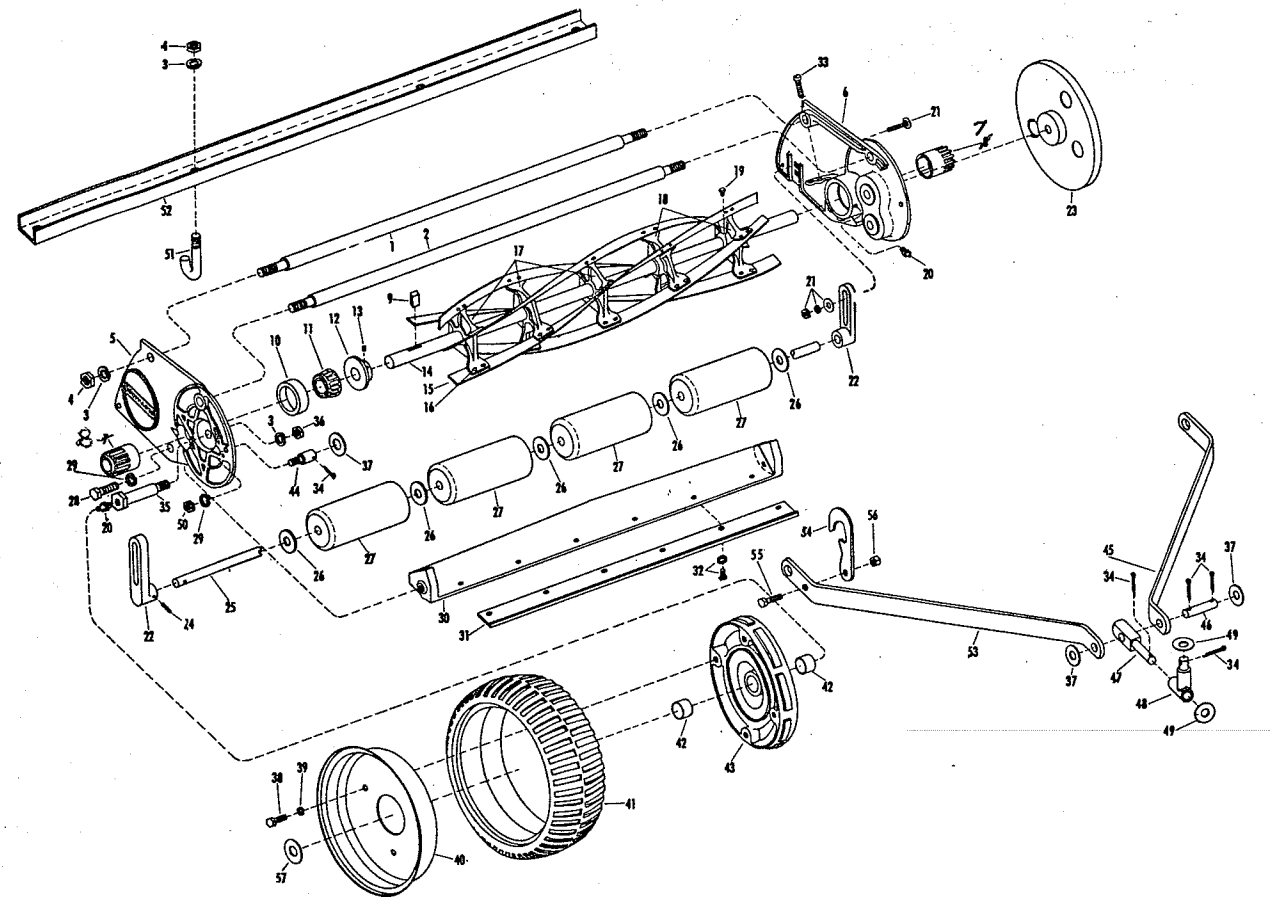
TO TRANSPORT

Each Mower is equipped with a Transport Hook (on right hand Tie Iron). For Transport tilt each Mower forward (one at a time) and place Hook over front Tie Rod. This lifts the rear of each Mower from mowing position.

TO ORDER REPAIR PARTS SUPPLY THE FOLLOWING:

1. Quantity wanted.
 2. The part number and name of part. (Not reference number).
 3. Model Number. (See Model Number at top of this page).
 4. Your name and address. (Please Print).
- Parts ordered will be sent C.O.D. If you wish estimate of cost, send list of parts and we will send quotation.

DO NOT RETURN GANG MOWERS TO THE FACTORY UNLESS YOU HAVE A LETTER AUTHORIZING YOU TO DO SO.



Ref. No.	Part No.	Description
1	100081	Tie Rod for Rear
2	100082	Tie Rod for Front
3	720004	Lock Washer
4	717017	Hex Nut
5	100083	Side Plate, R.H.
6	100084	Side Plate, L.H.
7	100085	Pinion, R.H. (from Front of Mower)
8	100086	Pinion, L.H. (from Front of Mower)
9	100087	Pawl
10	100088	Bearing Cup for Spiral Cutter
11	100089	Bearing for Spiral Cutter
12	100090	Collar for Spiral Cutter Shaft
13	713503	Allen Set Screw for Collar
14 to 19	100091	Spiral Cutter with Shaft <i>100148</i>
14	100092	Shaft for Spiral Cutter
15	100093	Knife for Spiral Cutter
16	100094	Rivet for Spider
17	100095	Spider, R.H., for Spiral Cutter
18	100096	Spider, L.H., for Spiral Cutter
19	100097	Set Screw for Spider
20	727002	Zerk Grease Fitting
21	702008	Bolt Assembly for Roller Bracket
	719002	
	720001	
	717001	
22	100098	Roller Bracket, R. or L.
23	100099	Wheel Cover, R.H.
23	100100	Wheel Cover, L.H.
24	723011	Roll Pin for Roller Bracket
25	100101	Shaft for Roller
26	719004	Flat Washer for Roller
27	100102	Wood Roller Section (4 Sectional)
28	705042	Pivot Screw for Knife Bar

Ref. No.	Part No.	Description
29	720006	Lock Washer
30 to 32	100103	Bar with Knife
30	100104	Knife Bar
31	100105	Lower Knife
32	100106	Screw Assy. for Lower Knife
33	100107	Adjusting Screw for Knife Bar
34	100108	Cotter Pin
35	100109	Wheel Stud Assy. w/Nut & Washers
36	717016	Hex Nut for Wheel Stud
37	100110	Flat Washer
38	705012	Cap Screw for Wheel
39	720001	Lock Washer for Wheel
40	100111	Wheel 1/2 Section
41	100112	Tire for Wheel
42	100113	Bearing for Wheel (2 in each Wheel)
43	100114	Hub and Gear for Drive Wheel
44	100115	Stud for Tie Iron
45	100116	Tie Iron, L.H.
46	100117	Pin for Swivel Shaft and Tie Irons
47	100118	Swivel Shaft for Swivel Hitch
48	100119	Swivel Hitch
49	719003	Flat Washer for Swivel Hitch
50	717015	Hex Nut for Tie Iron Stud
51	100120	J Bolt for Draw Bar
52	100121	Draw Bar (Channel Iron)
53	100122	Tie Iron w/Transport Hook
54	100123	Transport Hook
55	705017	Cap Screw for Hook
56	717511	Lock Nut for Hook
57	100124	Flat Washer