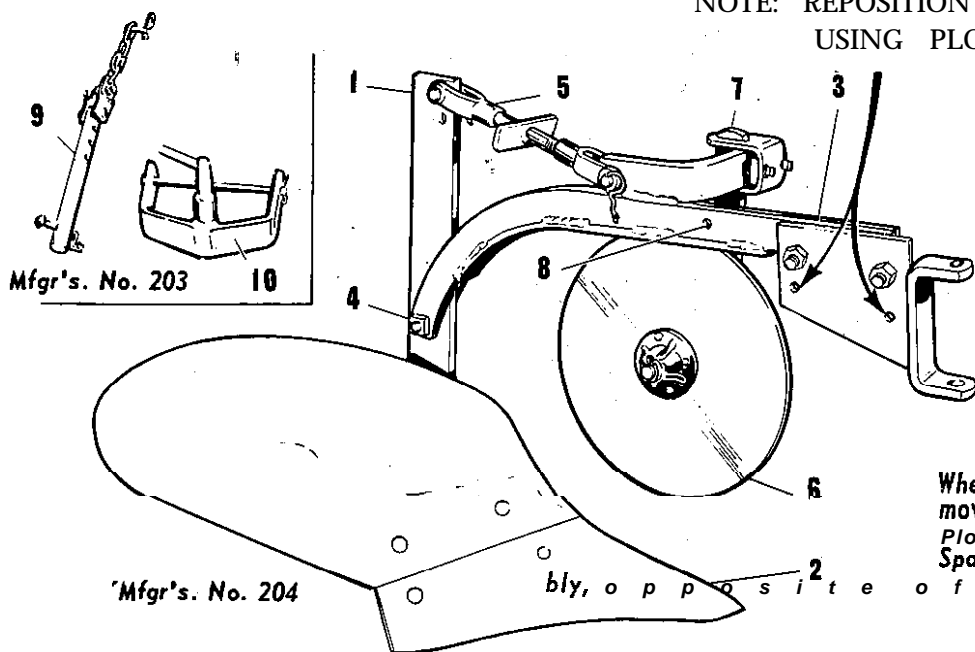


# Simplicity

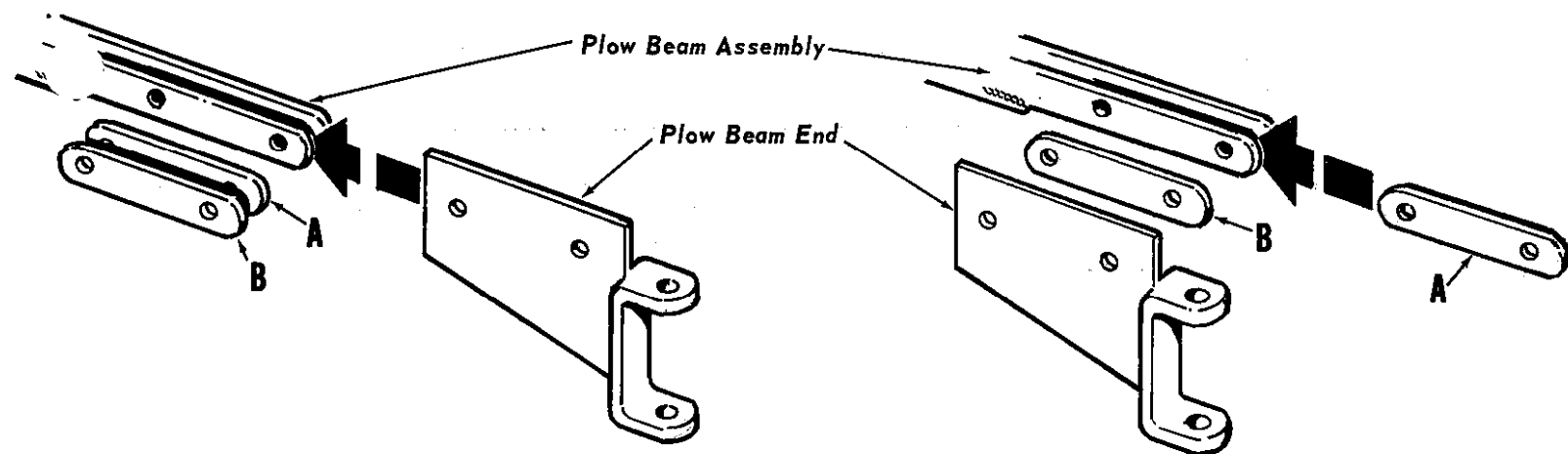
10" HEAVY  
DUTY PLOW

MFR'S NO. 204

NOTE: REPOSITION BEAM END TO THESE HOLES, WHEN USING PLOW WITH 2-WHEEL TRACTORS.



When the plow is used with the "725", move the Beam End to the center of the Plow Beam Assembly after moving the Spacer ("A") to outside of Beam Assembly, o p p o s i t e o f S p a c e r "B"



MODEL 725 RIDING TRACTOR

LANDLORD RIDING TRACTOR

### ASSEMBLY AND ADJUSTMENT (REQUIRES #203 HITCH ADAPTER)

1. Remove varnish from moldboard and share, using a good grade of varnish remover. (Keep greased when not in use.)

2. Bolt standard ( 1 ) to plow bottom ( 2 ).

3. Bolt beam ( 3 ) to standard at ( 4 ). Lock with jam nut so that beam is free to swing on standard.

4. Attach depth regulating yoke rod assembly ( 5 ). Pin and cotter pin.

5. Attach rolling coulter assembly ( 6 ) and adjust coulter standard ( 7 ) so that blade runs approximately 1/2" to the left of landslide. Set the rolling coulter for best depth depending upon the soil.

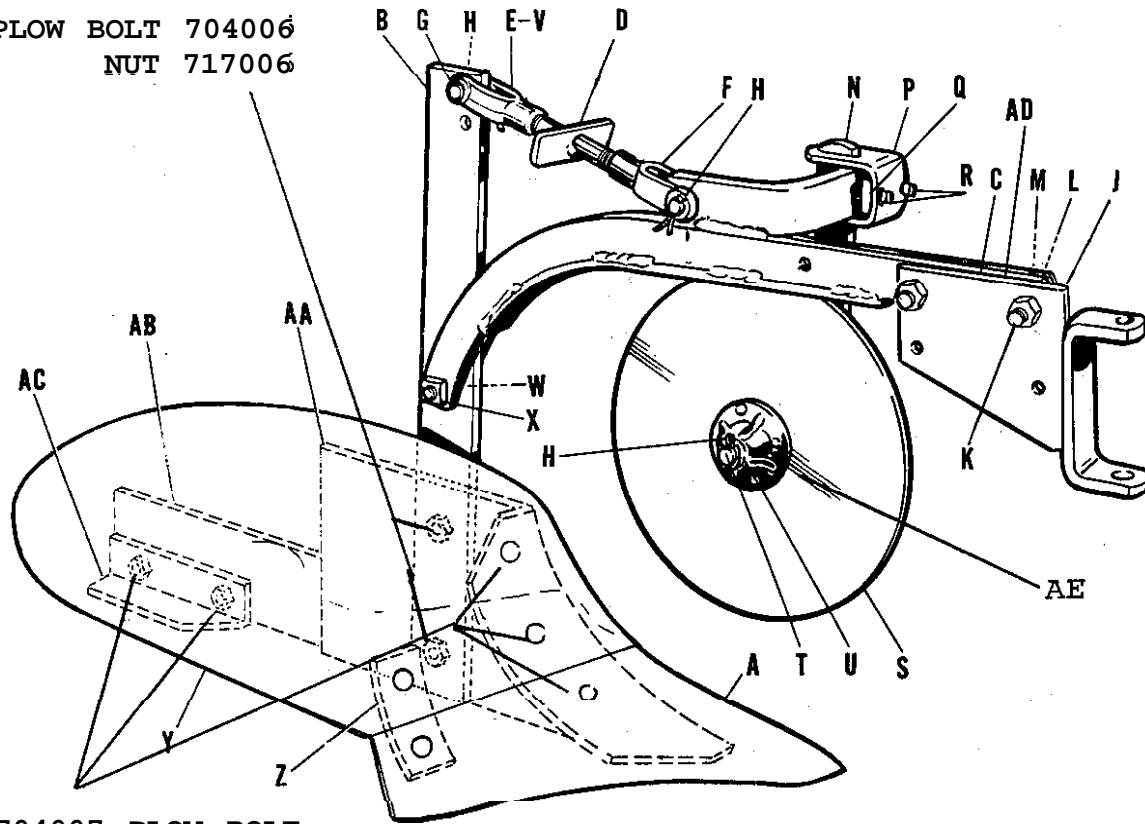
CAUTION: Be sure that the rolling, coulter is out of the ground when the tractor is in reverse gear.

6. Attach the lift pin and chain assembly ( 9 ) to the beam at ( 8 ) by means of the pin and spring clip provided. The hitch clevis adapter ( 10 ) is then attached to the tractor hitch by means of the pivot pin. Connect the plow to the hitch adapter with the hitch pin and insert the lift pin ( 9 ) in the tractor rear lift assembly and secure in place with a pin and spring clip.

7. Wheel weights should be used when operating the 10" Plow. The weights are designed so that as many weights as necessary may be added to the wheels

# 10" PLOW

PLOW BOLT 704006  
NUT 717006



704007 PLOW BOLT

Order by Part Number

Reference Letter	Part NO.	Description
A	112065	Share
B	112044	Standard
C	112077	Beam Assembly, Plow
D	11204:	Yoke Rod Assembly
E	112050	Yoke, L.H.
F	112051	Yoke, R.H.
G	112052	Pin, Yoke
H	722006	Pin, Cotter, w/extended prong, 1/8" dia. x 1" lg.
J	112053	End Assembly, Flow Beam
K	715036	Capscrew, Hex Hd., 3/8"-16 x 2-1/4" lg.
L	720002	Washer, Lock, 3/8"
M	717003	Nut, Full Hex., 3/8"-16 NC
N	112057	Standard, Coulter
P	8271023	Clamp
Q	9201073	Nut, Special, 5/16" x 1" x 2 1/4" lg.
R	713004	Set Screw, Cup Point, Sq. Hd., 3/8"-16 NC x 1" lg.
T	112040	Coulter Assembly, w/bushing
U	112058	Spindle, Coulter
V	8261055	Washer
W	717018	Nut, Hex, Jam, 5/8"-11 NC
X	705046	Screw, Cap, Hex., 1/2"-13 NC x 1 3/4" lg.
Y	717006	Nut, Hex., Full, 1/2"-13 NC
Z	112068	Moldboard
AA	112069	Brace, Moldboard
AB	112066	Saddle
AC	112067	Landside
AD	112070	Angle, Slip Heel
AE	112076	spacer, Flow Beam
	8111050	Bushing, Coulter