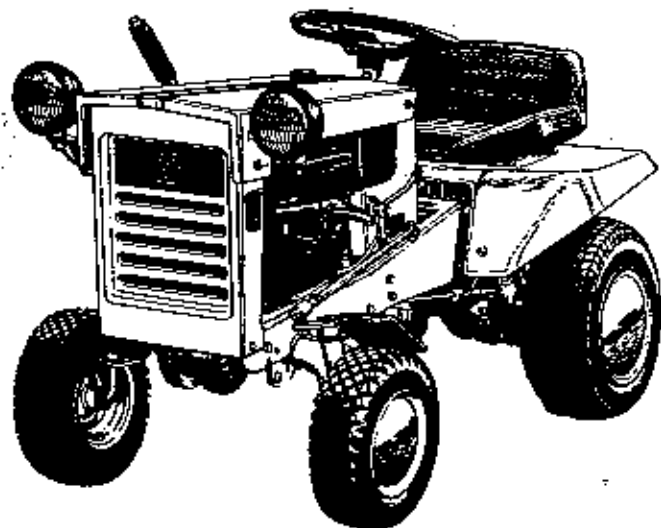
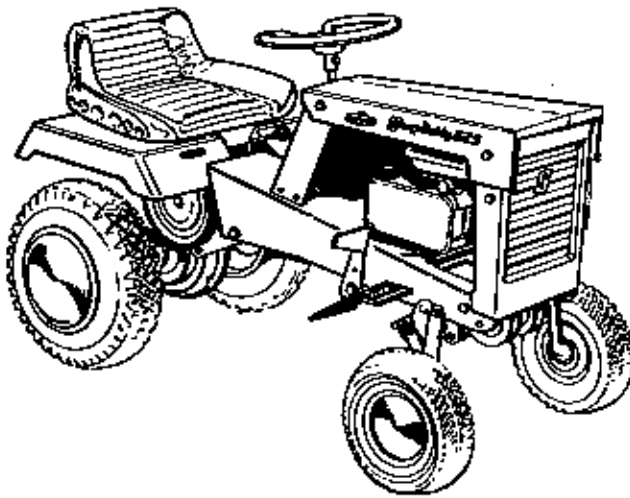


# *Simplicity*

## PARTS MANUAL

## SERF TRACTORS

(Includes 1968 - 1972)



**Attention Dealers:**

This manual contains parts information for Broadmoor Tractors and mowers from model year 1964 thru 1976. When referring to this parts manual keep in mind the manufacturing number and serial number of the product.

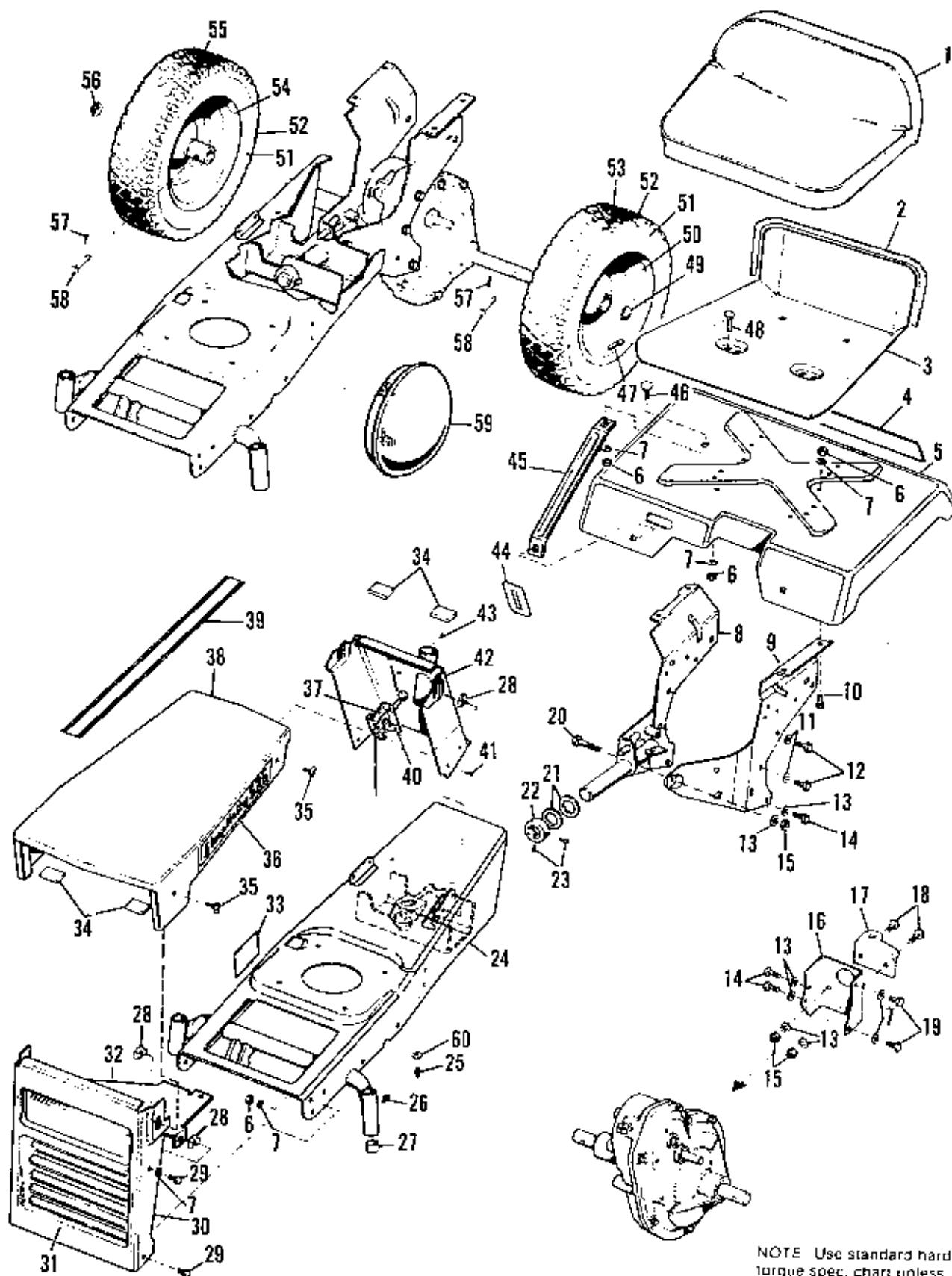
When using the Table of Contents refer to the combination manufacturing number in the far left column to assure finding the correct page number and grouping. All manufacturing numbers noted through the book will refer to the combination numbers. The manufacturing numbers of a particular tractor or mower will be listed below the combination number of the Table of Contents page.

A standard hardware torque chart is included on the inside back cover of this manual. Any individual or special torque on later models will be called out near its particular part.

Simplicity  
Technical Publications

© *Simplicity Mfg. Co., Division of Allis-Chalmers 1980*

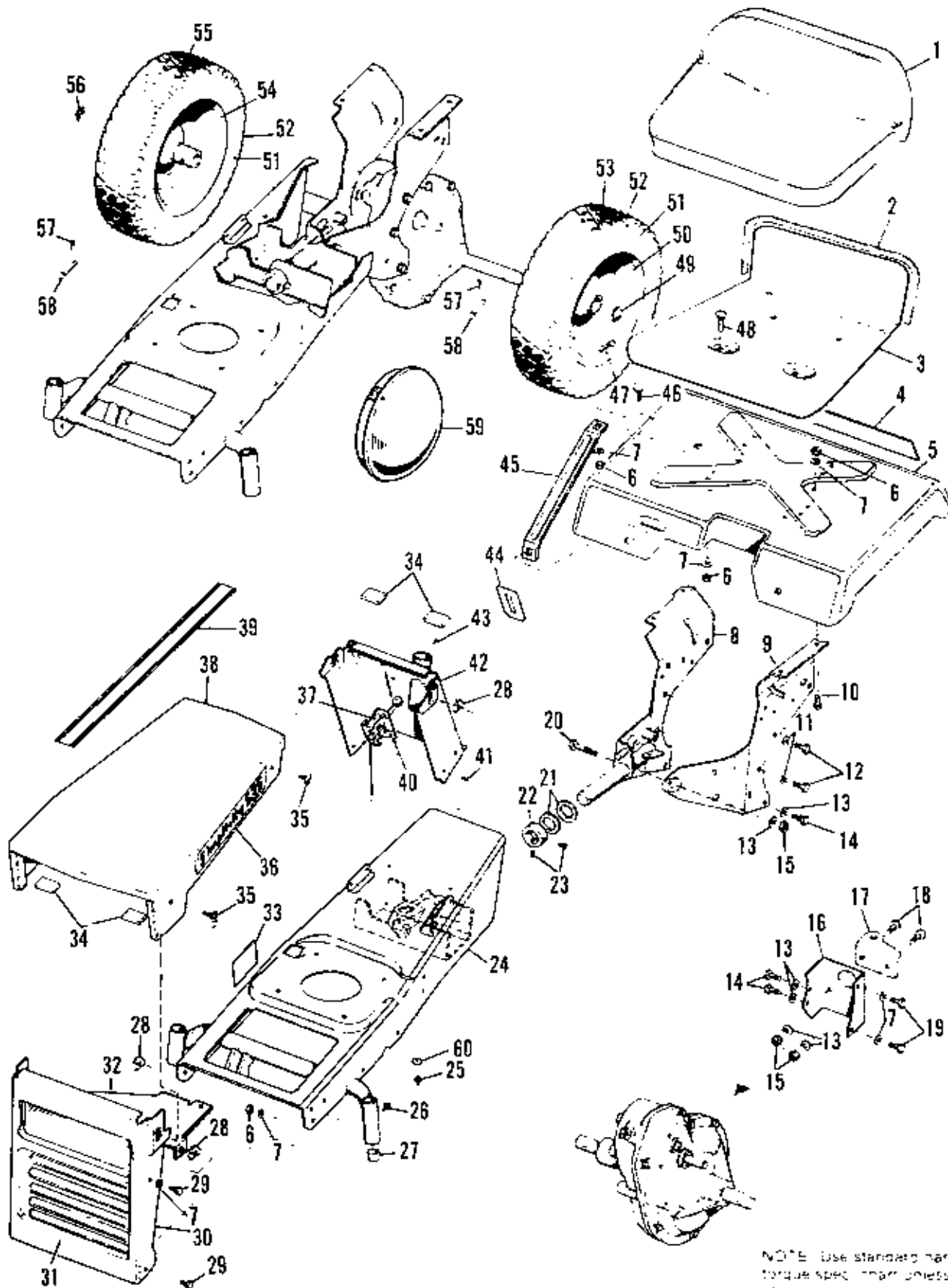




NOTE Use standard hardware torque spec. chart unless otherwise noted.

Ref. No.	Part No.	Qty.	Description
1	162094	1	PAD, Seat
2	159177	1	TAPE, 2 Feet
3	165066	1	PANEL, Seat
4	171393	1	EMBLEM, Rear (990776 & 990777 Only)
	163073	1	EMBLEM, Rear
5	174691	1	SUPPORT, Seat (990776 & 990777 Only)
	162105	1	SUPPORT, Seat
6	917372	9	NUT, Hex, Full, 5/16-18
7	917356	13	LOCKWASHER, 5/16
8	165039	1	PLATE, Side, R.H. (990776 & 990777 Only)
	1655451	1	PLATE ASSY., R.H.
9	165040	1	PLATE, Side, L.H.
10	921332	4	CAPSCREW, Hex Hd., 5/16-18 x 3/4
11	918199	4	LOCKWASHER, 7/16
12	919321	4	CAPSCREW, Hex Hd., 7/16-14 x 3/4
13	916965	6	LOCKWASHER, 3/8
14	921965	3	CAPSCREW, Hex Hd., 3/8-16 x 3/4
15	916950	3	NUT, Hex, Full, 3/8-16
16	156191	1	BRACKET, Draw Bar
17	156192	1	CLIP, Draw Bar
18	921210	2	CAPSCREW, Hex Hd., 3/8-16 x 1
19	921977	2	CAPSCREW, Hex Hd., 5/16-18 x 1-1/4
20	921971	1	CAPSCREW, Hex Hd., 3/8-16 x 1-3/4
21	105050	2	WASHER
22	154065	1	COLLAR, Set
23	928721	2	SETSCREW, 5/16-18 x 1/2
24	163116	1	FRAME ASSY.
25	921133	1	FITTING, Grease
26	912808	2	FITTING, Grease
27	154289	4	BUSHING
28	930659	5	NUT, Retainer
29	925205	4	CAPSCREW, Hex Hd., 5/16-18 x 5/8
30	170928	1	GRILLE (990776 & 990777 Only)
	163001	1	GRILLE

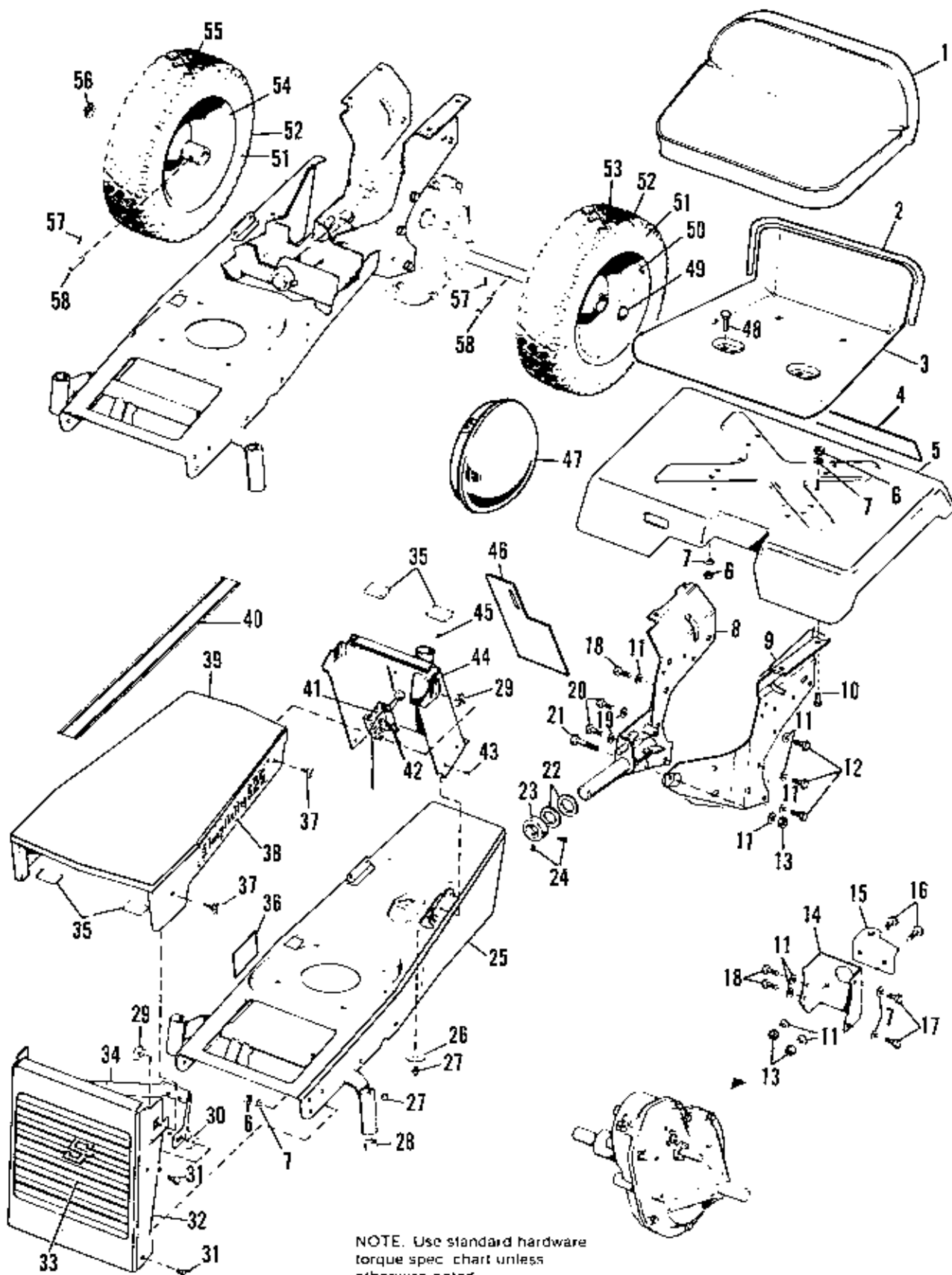
NOTE: Parts Reference No. 31-60 are cont'd. on following page.



NOTE: Use standard hardware torque spec. unless otherwise noted.

Ref. No.	Part No.	Qty.	Description
31	171876	1	DECAL, Grille (990776 & 990777 Only)
	170296	1	DECAL, Grille
32	170093	1	SUPPORT, Grille
33	162072	1	DECAL, Clutch
34	106582	4	PAD, Felt
35	928693	4	SCREW, Thumb, 5/16-18 x 3/4
36	171755	2	DECAL, Number (990776 & 990777 Only)
	163098	2	DECAL, Number
37	171553	1	CONTROL, Choke (990776 & 990777 Only)
	163097	1	CONTROL, Choke
38	170947	1	HOOD (990776 & 990777 Only)
	163040	1	HOOD
39	163069	1	STRIPE, Hood
40	165073	1	CLIP, Speed
41	927426	4	SCREW, Hex, Taptite, 1/4-20 x 3/8
42	170081	1	DASH ASSY.
43	923188	2	SCREW, Self Tapping, 1/4-20 x 1/2
44	170098	1	DECAL, Throttle
45	165070	1	BRACE, Seat Support
46	923700	2	BOLT, Carriage, 5/16-18 x 1/2
47	171270	2	VALVE STEM & CAP
48	920562	4	BOLT, Carriage, 5/16-18 x 3/4
49	158433	1	BUTTON, Plug
50	1608917	1	WHEEL ASSY., L.H. (990776 & 990777 Only)
	1609382	1	WHEEL ASSY., L.H.
51	153038	2	TUBE
52	157490	2	TIRE, Tubeless (990776 & 990777 Only)
	153037	2	TIRE
53	1608919	1	WHEEL & TIRE ASSY., L.H. (990776 & 990777 Only)
	1608381	1	WHEEL & TIRE ASSY., L.H.
54	171863	1	WHEEL ASSY., R.H. (990776 & 990777 Only)
	1608384	1	WHEEL ASSY., R.H.
55	171862	1	WHEEL & TIRE ASSY., R.H. (990776 & 990777 Only)
	1608383	1	WHEEL & TIRE ASSY., R.H.
56	158436	1	BUTTON, Plug
57	918451	2	PIN, Cotter, 1/8 x 3/4
58	118053	2	PIN
59	156211	2	CAP, Hub, Rear
60	923212	2	WASHER, Plain, #10 (990595 & 990596 Only)

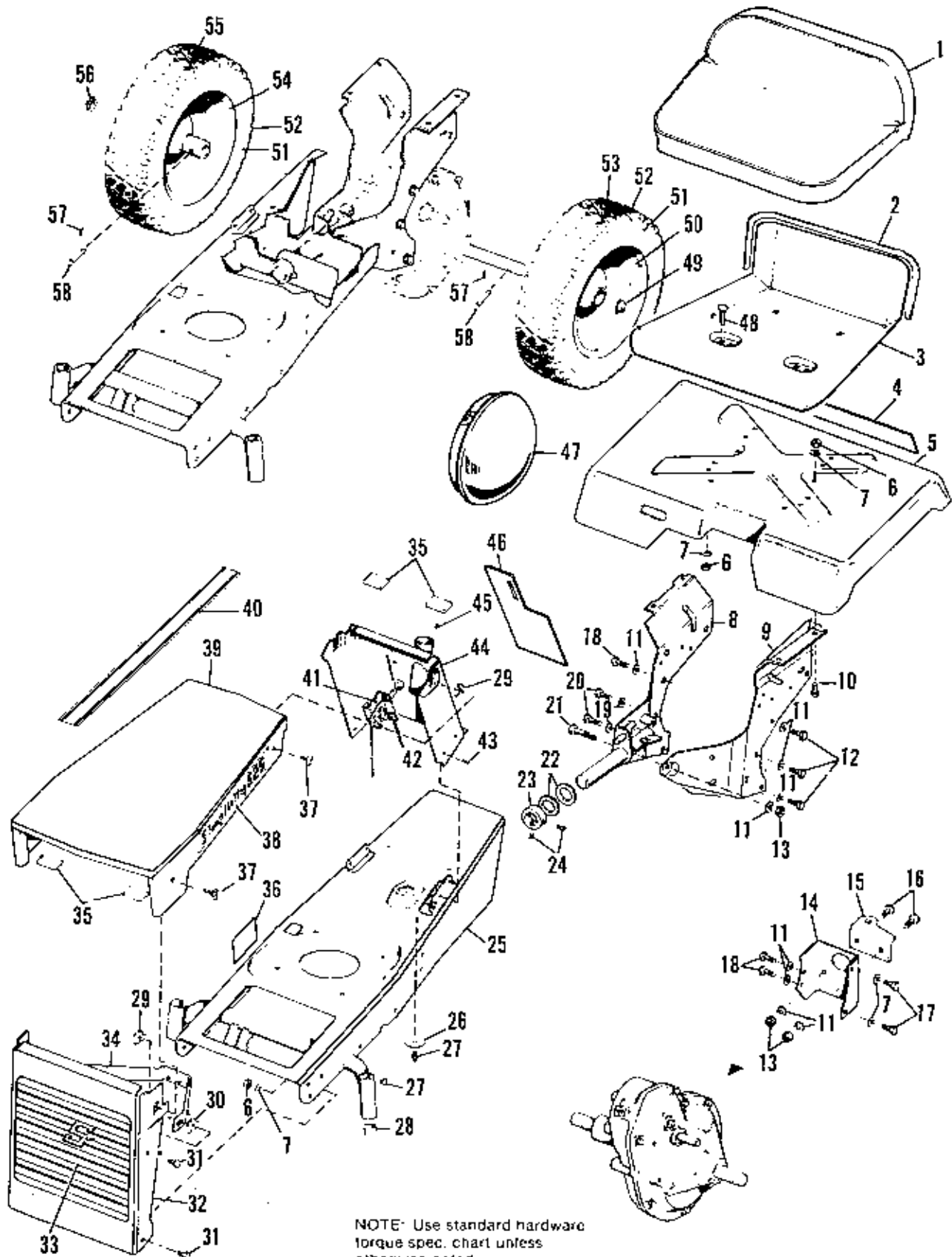
NOTE: Parts Reference No. 1-30 found on preceding page.





Rel. No.	Part No.	Qty.	Description
1	162094	1	PAD, Seat
2	159177	2	TAPE
3	165066	1	PANEL, Seat
4	163073	1	EMBLEM, Rear
5	162105	1	SUPPORT, Seat (990485 Only)
	162042	1	SUPPORT, Seat
6	917372	7	NUT, Hex, Full, 5/16-18
7	917356	9	LOCKWASHER, 5/16
8	1655451	1	PLATE ASSY., Side (990485 Only)
	174045	1	PLATE ASSY., Side
9	165040	1	PLATE, Side, L.H. (990485 Only)
	162016	1	PLATE, Side, L.H.
10	921332	4	CAPSCREW, Hex Hd., 5/16-18 x 3/4
11	916965	8	LOCKWASHER, 3/8
12	921966	3	CAPSCREW, Hex Hd., 3/8-16 x 7/8
13	916950	3	NUT, Hex, Full, 3/8-16
14	156191	1	BRACKET, Draw Bar
15	156192	1	CLIP, Draw Bar
16	921210	2	CAPSCREW, Hex Hd., 3/8-16 x 1
17	921977	2	CAPSCREW, Hex Hd., 5/16-18 x 1-1/4
18	921965	3	CAPSCREW, Hex Hd., 3/8-16 x 3/4
19	918199	2	LOCKWASHER, 7/16
20	919321	2	CAPSCREW, Hex Hd., 7/16-14 x 3/4
21	921971	1	CAPSCREW, Hex Hd., 3/8-16 x 1-3/4
22	105050	2	WASHER
23	154065	1	COLLAR, Set
24	928721	2	SETSCREW, 5/16-18 x 1/2
25	163048	1	FRAME ASSY.
26	923212	1	WASHER, Plain, #10
27	912808	3	FITTING, Grease
28	154289	4	BUSHING

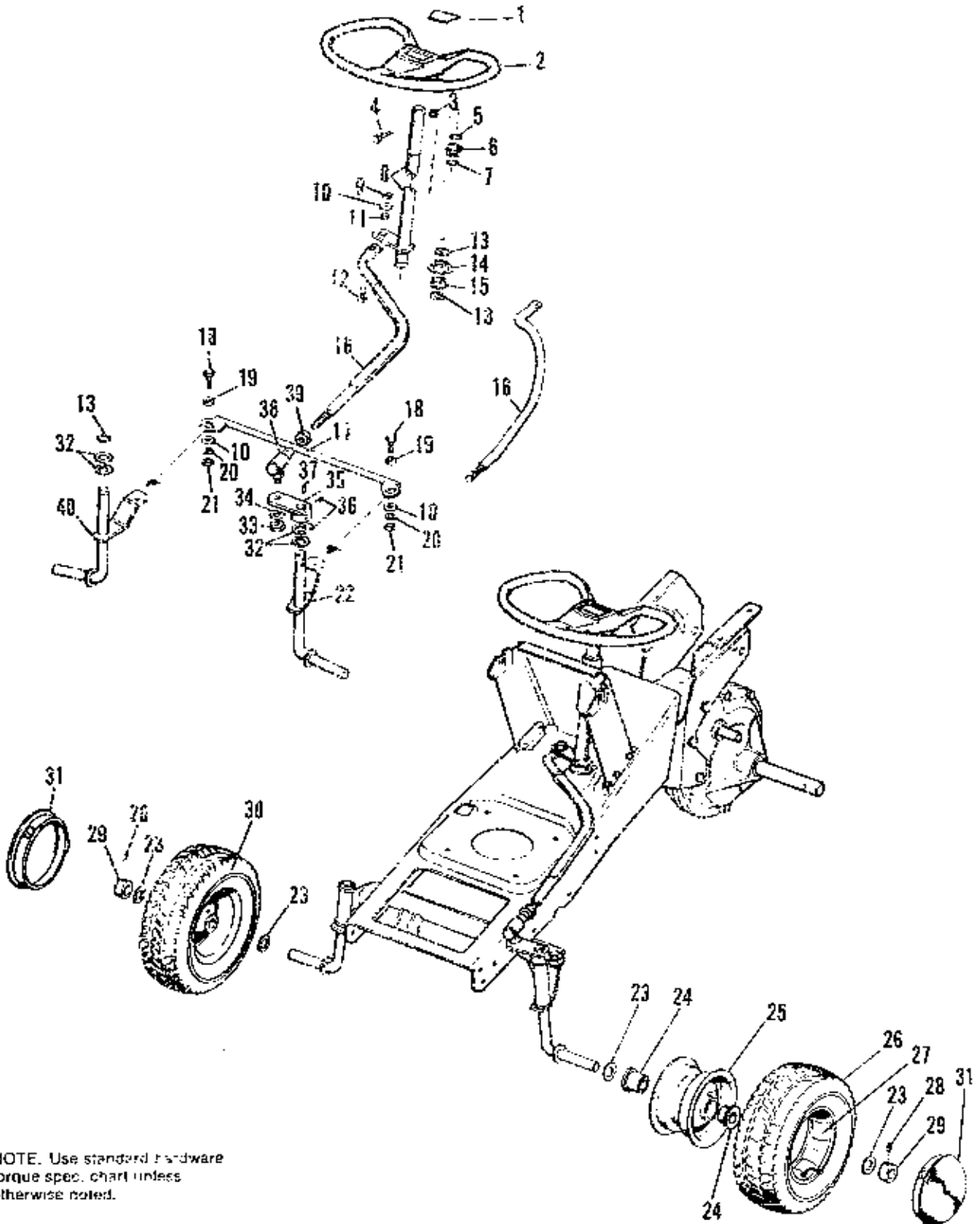
NOTE: Parts Reference No. 29-58 are cont'd. on the following page.



NOTE: Use standard hardware torque spec. chart unless otherwise noted.

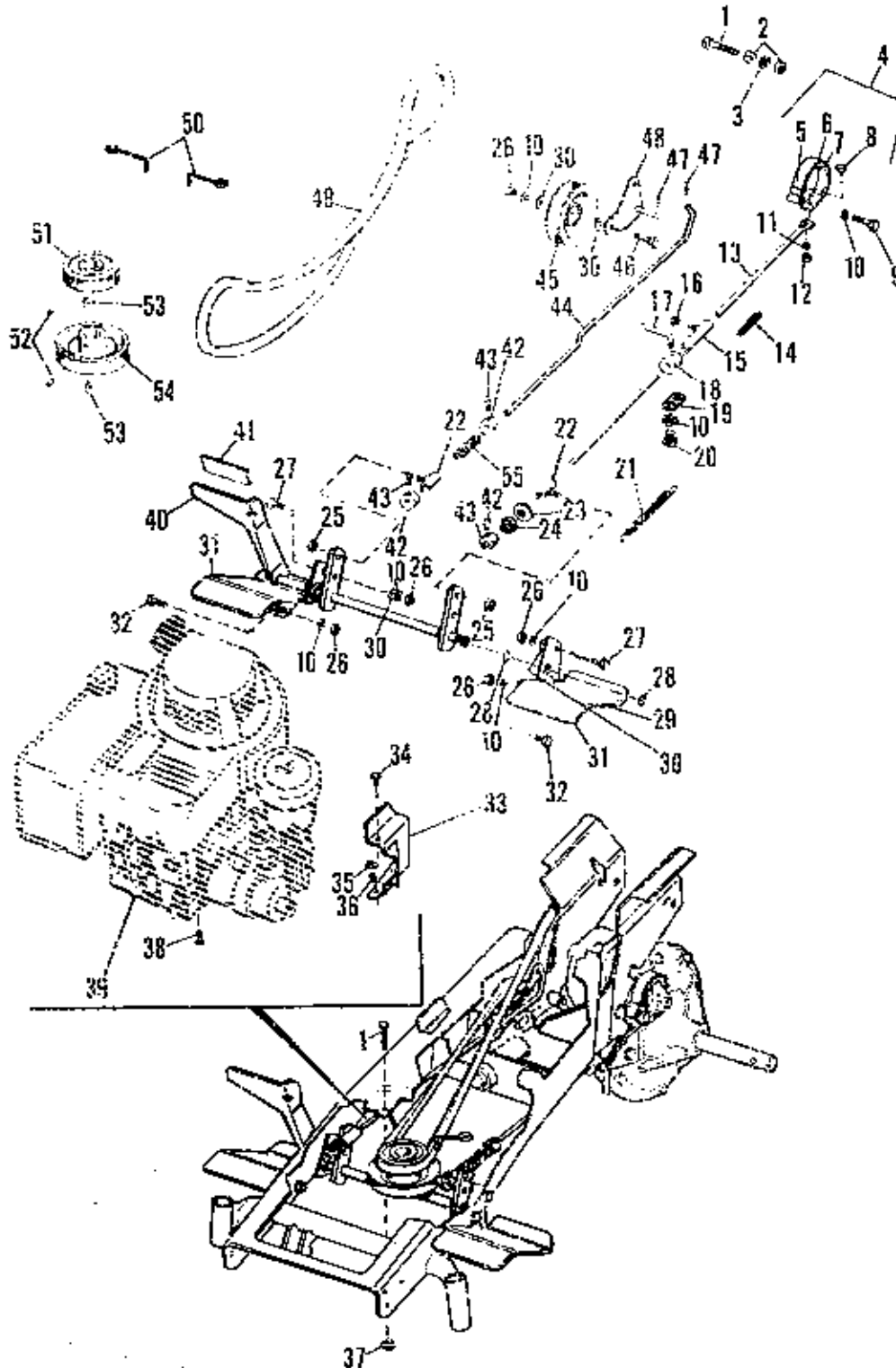
Ref. No.	Part No.	Qty.	Description
29	930659	3	NUT, Retainer
30	920470	2	NUT, Speed
31	925205	4	CAPSCREW, Hex Hd., 5/16-18 x 5/8
32	163001	1	GRILLE
33	163068	1	DECAL, Grille
34	163036	1	SUPPORT, Grille
35	106582	4	PAD, Felt
36	162072	1	DECAL, Clutch
37	928693	4	THUMB, Screw, 5/16-18 x 3/4
38	163098	2	DECAL, Number (990485 Only)
	163070	2	DECAL, Number
39	163040	1	HOOD
40	163069	1	STRIPE, Hood (990485 Only)
41	163097	1	CONTROL, Choke (990485 Only)
	163071	1	CONTROL, Choke
42	165073	1	CLIP, Speed (990485 Only)
43	927428	4	SCREW, Hex, Taplite, 1/4-20 x 3/8
44	163037	1	DASH ASSY.
45	923188	2	SCREW, Self Tapping, 1/4-20 x 1/2
46	163104	1	DECAL, Throttle (990485 Only)
	163076	1	DECAL, Throttle
47	156211	2	CAP, Hub, Rear
48	920562	4	BOLT, Carriage, 5/16-18 x 3/4
49	158433	1	BUTTON, Plug
50	1608382	1	WHEEL ASSY., L.H.
51	153038	2	TUBE
52	153037	2	TIRE
53	1608381	1	WHEEL & TIRE ASSY., L.H.
54	1608384	1	WHEEL ASSY., R.H.
55	1608383	1	WHEEL & TIRE ASSY., R.H.
56	158436	1	BUTTON, Plug
57	918451	2	PIN, Cotter, 1/8 x 3/4
58	118053	2	PIN

NOTE: Parts Reference No. 1-28 found on preceding page.



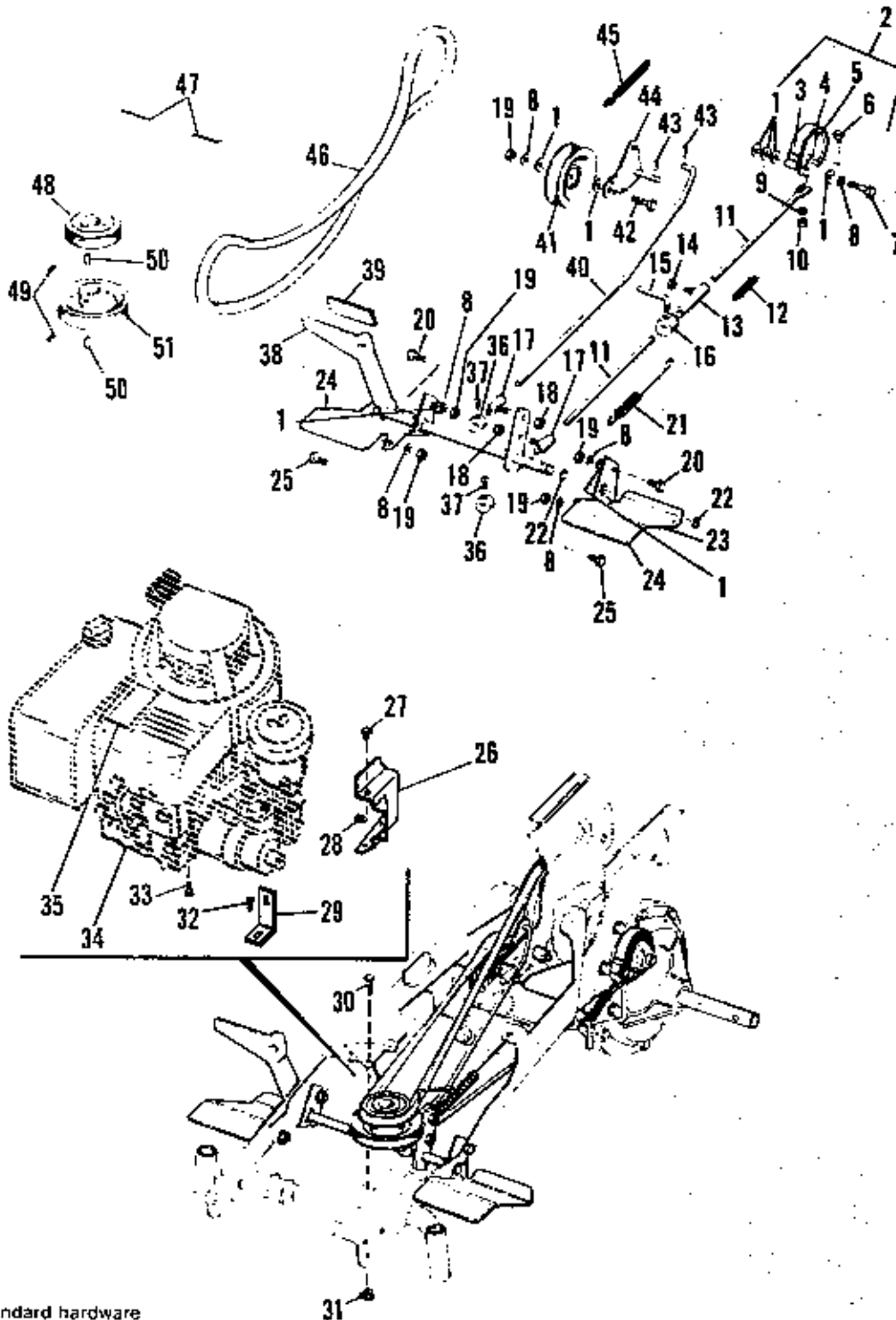
NOTE. Use standard hardware torque spec. chart unless otherwise noted.

Ref. No.	Part No.	Qty.	Description
1	170107	1	DECAL (990595, 990596, 990796, 990777 Only)
2	163113	1	WHEEL ASSY., Steering
3	923362	1	LOCKNUT, Hex, 5/16-18
4	921977	1	CAPSCREW, Hex Hd., 5/16-18 x 1-1/4
5	157241	1	RING, Snap (Qty. 2 on 990481 Only)
6	157077	1	BUSHING
7	154264	1	RING, Snap
8	170105	1	SHAFT, ASSY., Steering 990595, 990596, 990796, 990777 Only)
	163025	1	SHAFT ASSY., Steering
9	930651	1	LOCKNUT, Hex, 3/8-16
10	917378	3	WASHER, Plain, 3/8
11	121349	1	SPACER
	153073	1	SPACER (990481 Only)
12	921210	1	CAPSCREW, Hex Hd., 3/8-16 x 1
13	157286	3	RING, Retainer
14	158012	1	CUP, Steering Shaft
15	159026	1	BUSHING
16	170091	1	ROD, Tie
	163060	1	ROD, Tie (990481 & 990485 Only)
17	163023	1	LINK ASSY., Drag
18	162053	2	SCREW, Special
19	154177	2	SPACER
20	916965	2	LOCKWASHER, 3/8
21	916950	2	NUT, Hex, Full, 3/8-16
22	163033	1	SPINDLE ASSY., L.H.
23	101022	4	WASHER
24	163111	4	BEARING (Not used on 990481 Only)
25	1608380	2	WHEEL (Not used on 990481 Only)
26	163108	2	TIRE (Not used on 990481 Only)
27	163109	2	TUBE (Not used on 990481 Only)
28	928691	2	SETSCREW, 5/16-18 x 5/16
29	8021010	2	COLLAR, Set
30	1608379	2	WHEEL & TIRE ASSY.
	163066	2	WHEEL & TIRE ASSY.
31	163114	2	CAP, Hub, Front (990595 & 990596 Only)
	163105	2	CAP, Hub, Front (990485 Only)
	163087	2	CAP, Hub, Front (990481 Only)
32	108181	4	WASHER
33	919423	1	NUT, Hex, Full, 1/2-20
34	916966	1	LOCKWASHER, 1/2
35	163007	1	LEVER ASSY., Steering
36	928721	2	SETSCREW, 5/16-18 x 1/2
37	930670	1	KEY
38	154301	1	JOINT, Ball
39	919262	1	LOCKNUT, Hex, Jam, 1/2-20
40	163030	1	SPINDLE ASSY., R.H.



NOTE: Use standard hardware torque spec. chart unless otherwise noted.

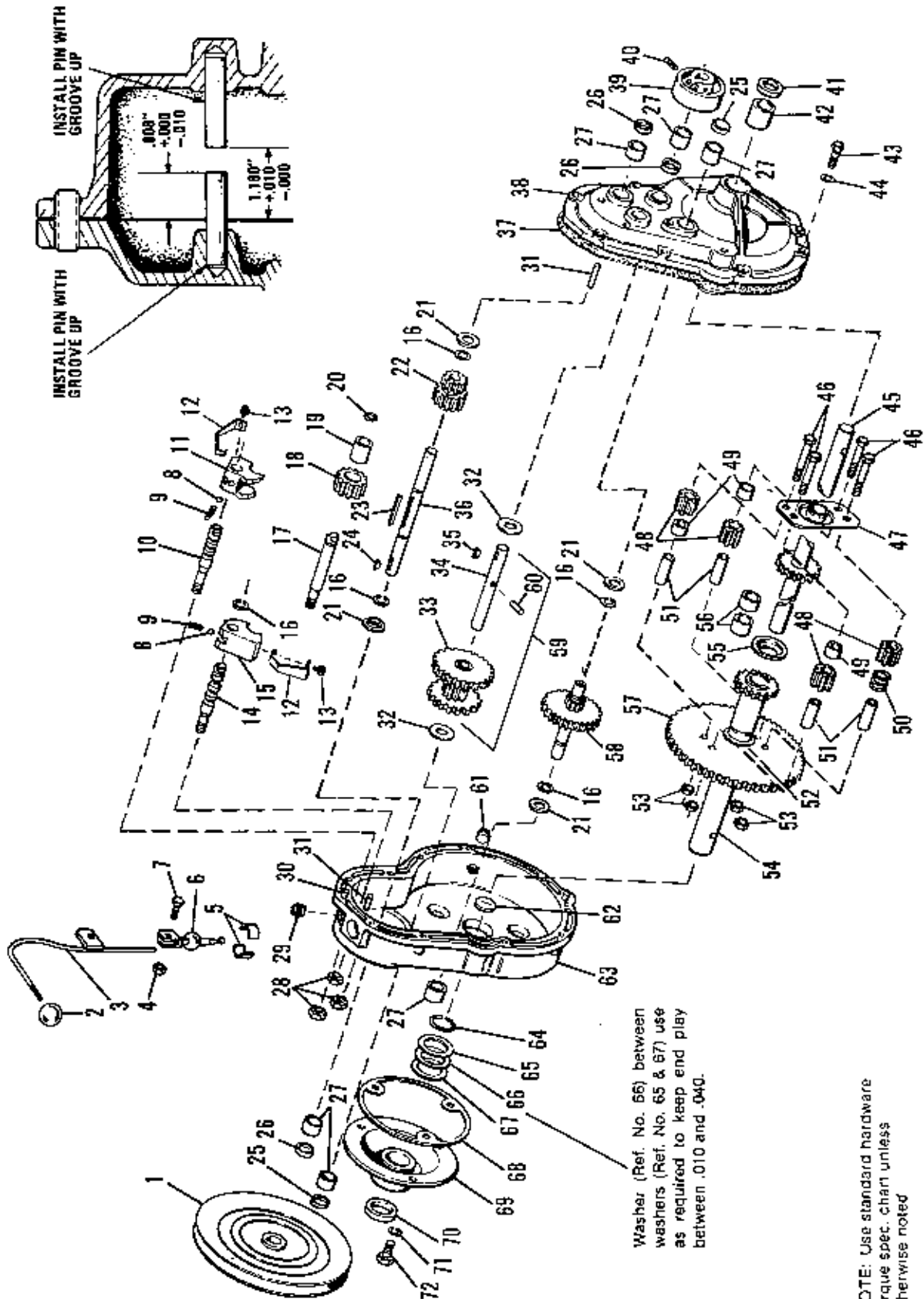
Ref. No.	Part No.	Qty.	Description
1	921221	2	CAPSCREW, Hex Hd., 5/16-18 x 1-1/2
2	917372	2	NUT, Hex, Full, 5/16-18
3	917356	1	LOCKWASHER, 5/16
4	156134	1	BAND ASSY., Brake
5	926021	3	RIVET, #7 x 1/4
6	156135	1	BAND, Brake
7	156136	1	LINING, Brake
8	922129	1	CAPSCREW, Hex, 1/4-20 x 1/2
9	921969	1	CAPSCREW, Hex Hd., 3/8-16 x 1-1/2
10	916965	8	LOCKWASHER, 3/8
11	916964	1	LOCKWASHER, 1/4
12	916622	1	NUT, Hex, Full, 1/4-20
13	162092	1	ROD, Brake
14	159106	1	SPRING (990776 & 990777 Only)
	121037	1	SPRING
15	165075	1	GUIDE ASSY., Rod (990776 & 990777 Only)
	156304	1	GUIDE ASSY., Rod
16	923358	1	LOCKNUT, Hex, 1/4-20
17	157088	1	LOCK, Parking Brake
18	157087	1	COLLAR, Parking Brake
19	170659	1	ANCHOR, Spring (990776 & 990777 Only)
20	928730	1	SCREW, Hex, Taptite, 3/8-16 x 1/2
21	165068	1	SPRING, Return
22	156303	2	GUIDE ASSY., Rod
23	917378	1	WASHER, Plain, 3/8
24	157127	1	SPRING
25	923362	2	LOCKNUT, Hex, 5/16-18
26	916950	5	NUT, Hex, Full, 3/8-16
27	921210	2	CAPSCREW, Hex Hd., 3/8-16 x 1
28	1602155	2	RING, Retaining
29	162029	1	FOOTREST, L.H.
30	917642	4	WASHER, Plain, 5/16
31	162054	2	COVER, Footrest
32	921965	2	CAPSCREW, Hex Hd., 3/8-16 x 3/4
33	163075	1	DEFLECTOR, Muffler
34	919339	1	SCREW, Self Tapping, #14 x 5/8
35	928703	1	NUT, Speed
36	927426	1	SCREW, Hex, Taptite, 1/4-20 x 3/8
37	927557	1	LOCKNUT, Hex, Flange, 5/16-18
38	928635	4	SCREW, Hex, Washer Hd., 3/8-16 x 1-1/4
39		1	ENGINE
40	170208	1	SHAFT ASSY., Clutch
41	162098	1	PAD, Pedal
42	8191022	3	COLLAR, Set
43	928804	3	SETSCREW, 1/4-20 x 3/8
44	170063	1	ROD, Clutch
45	106716	1	PULLEY, Idler
46	920415	1	CAPSCREW, Hex Hd., 3/8-16 x 1-1/4
47	918451	2	PIN, Cotter, 1/8 x 3/4
48	162021	1	BRACKET ASSY., Pulley
49	163011	1	V-BELT, Drive
50	163065	2	STOP, Belt
51	1651566	1	PULLEY, Engine, Small
52	928691	2	SETSCREW, 5/16-18 x 1/2
53	154096	2	KEY
54	163077	1	PULLEY, Engine, Large
55	157041	1	SPRING



NOTE. Use standard hardware torque spec. chart unless otherwise noted.

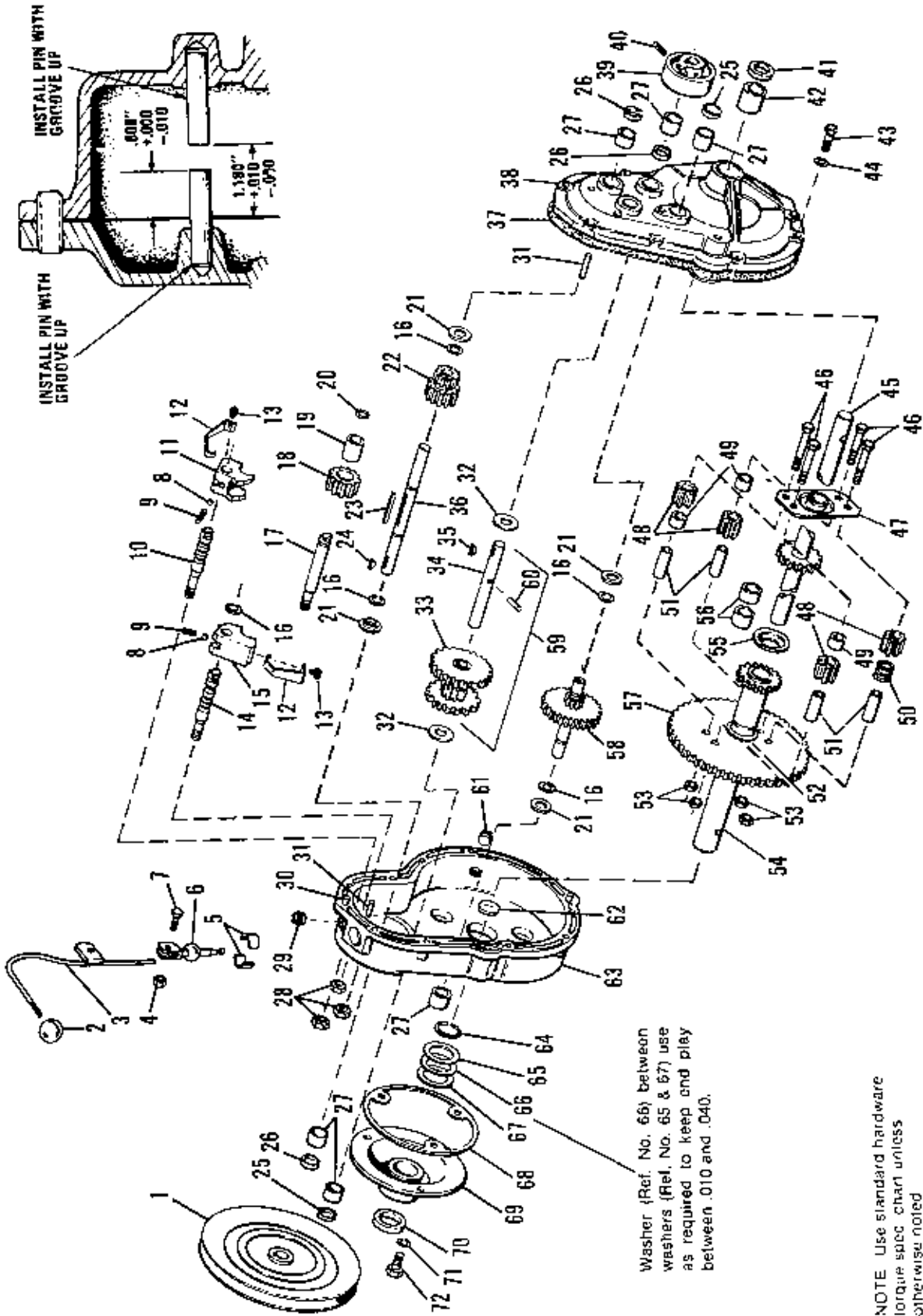


Rel. No.	Part No.	Qty.	Description
1	917642	8	WASHER, Plain, 5/16
2	156134	1	BAND ASSY., Brake
3	926021	3	RIVET, #7 x 1/4
4	156135	1	BAND, Brake
5	156136	1	LINING, Brake
6	922129	1	CAPSCREW, Hex, 1/4-20 x 1/2
7	921969	1	CAPSCREW, Hex Hd., 3/8-16 x 1-1/2
8	916965	8	LOCKWASHER, 3/8
9	916964	1	LOCKWASHER, 1/4
10	916622	1	NUT, Hex, Full, 1/4-20
11	162092	1	ROD, Brake
12	121037	1	SPRING
13	156304	1	GUIDE ASSY., Rod
14	923358	1	LOCKNUT, Hex, 1/4-20
15	157088	1	LOCK, Parking Brake
16	157087	1	COLLAR, Parking Brake
17	156303	2	GUIDE ASSY., Rod
18	923362	2	LOCKNUT, Hex, 5/16-18
19	916950	5	NUT, Hex, Full, 3/8-16
20	921210	2	CAPSCREW, Hex Hd., 3/8-16 x 1
21	159181	1	SPRING
22	1602155	2	RING, Retaining
23	162029	1	FOOTREST, L.H.
24	162054	2	COVER, Footrest
25	921965	2	CAPSCREW, Hex Hd., 3/8-16 x 3/4
26	163075	1	DEFLECTOR, Muffler
27	919339	1	SCREW, Self Tapping, #14 x 5/8
28	928703	1	NUT, Speed
29	163079	1	BRACKET
30	921221	1	CAPSCREW, Hex Hd., 5/16-18 x 1-1/2
31	927577	1	LOCKNUT, Hex, Flange, 5/16-18
32	927428	2	SCREW, Hex, Taplite, 1/4-20 x 3/8
33	928635	4	SCREW, Hex, Washer Hd., 3/8-16 x 1-1/4
34		1	ENGINE, Briggs & Stratton
35	162073	1	FILM, Engine Cover
36	8191022	2	COLLAR, Set
37	928804	2	SETSCREW, 1/4-20 x 3/8
38	162024	1	SHAFT ASSY., Clutch
39	162098	1	PAD, Pedal
40	163086	1	ROD, Clutch
41	106716	1	PULLEY, Idler
42	920415	1	CAPSCREW, Hex Hd., 3/8-16 x 1-1/4
43	918451	2	PIN, Cotter, 1/8 x 3/4
44	162021	1	BRACKET ASSY., Pulley
45	162082	1	SPRING, Return (990418 Only)
	165068	1	SPRING, Return
46	163011	1	V-BELT, Drive
47	163065	2	STOP, Belt
48	163010	1	PULLEY, Engine, Small
49	928691	2	SETSCREW, 5/16-18 x 1/2
50	154096	2	KEY
51	163077	1	PULLEY, Engine, Large



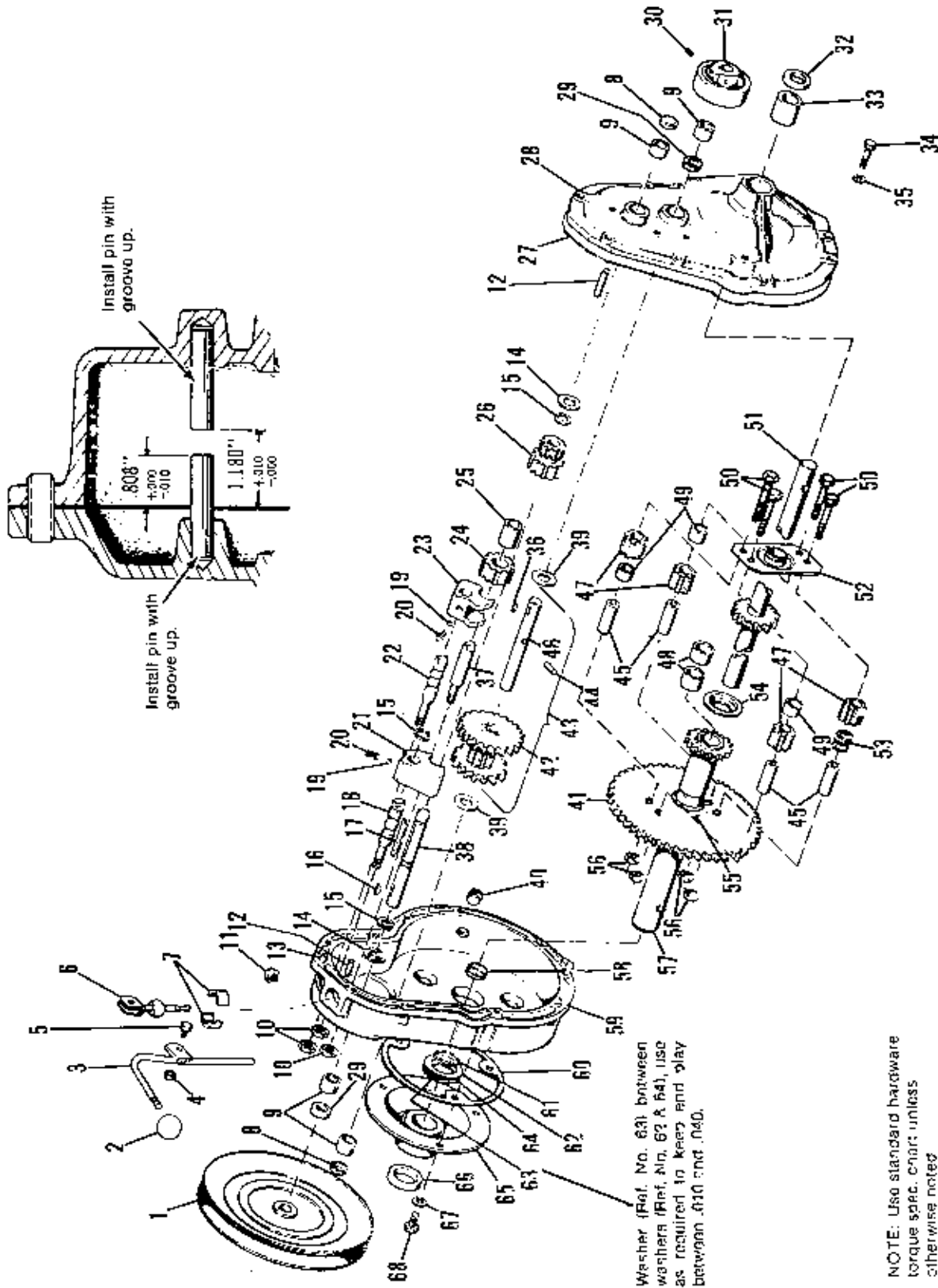
Ref. No.	Part No.	Qty.	Description
1	156119	1	PULLEY, Transmission
2	8021050	1	KNOB
3	165063	1	LEVER ASSY., Shift
4	923358	1	LOCKNUT, Hex, 1/4-20
5	101042	2	BUSHING, Half
6	156031	1	ROD ASSY., Shift
7	923341	1	CAPSCREW, Hex Hd., 1/4-20 x 3/4
8	154262	2	BALL
9	171456	2	SPRING (990776 & 990777 Only)
	154323	2	SPRING
10	171372	1	SHAFT, Hi-Lo (990776 & 990777 Only)
	156078	1	SHAFT, Hi-Lo
11	171364	1	FORK, Shift, I & II (990776 & 990777 Only)
	156080	1	FORK, Shift, I & II
12	171342	2	SPRING (990776 & 990777 Only)
13	922116	2	CAPSCREW, Hex Hd., 5/16-18 x 3/8 (990776 & 990777 Only)
14	171365	1	SHAFT, Reverse & I (990776 & 990777 Only)
	165004	1	SHAFT, Reverse & I
15	171363	1	FORK, Shift, Reverse
16	8061048	5	RING, Retaining
17	165005	1	SHAFT, Pinion, Reverse
18	1650625	1	PINION, Reverse
19	156082	1	BEARING, Roller
20	165006	1	O-RING
21	156085	4	WASHER
22	156087	1	PINION ASSY., Hi-Lo
23	170453	1	KEY (990776 & 990777 Only)
	156086	1	KEY
24	930670	1	KEY, Hi-Pro
25	163050	2	PLUG
26	156084	3	SEAL, Oil
27	163022	6	BUSHING
28	918213	3	NUT, Hex, Full, 7/16-14
29	930676	1	PLUG, Pipe
30	918113	2	PIN, Roll, 3/8 x 1
31	156308	2	PIN ASSY., Roll
32	156089	2	WASHER
33	165011	1	GEAR ASSY., Cluster
34	165010	1	SHAFT, Brake
35	930669	1	KEY
36	170455	1	SHAFT, Pulley (990776 & 990777 Only)
	103238	1	SHAFT, Pulley

NOTE: Parts Reference No. 37-72 cont'd. on the following page.



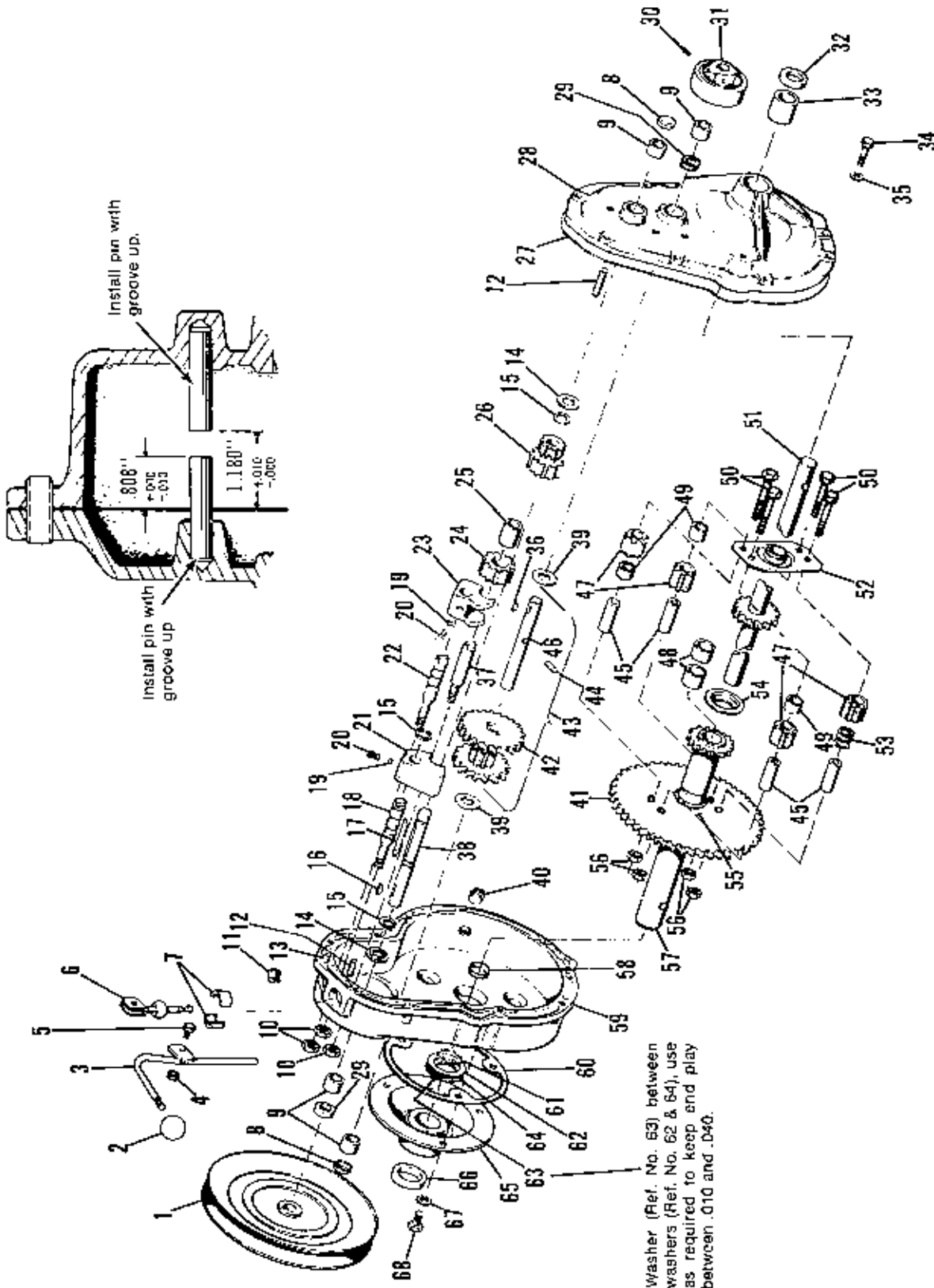
Ref. No.	Part No.	Qty.	Description
37	156103	1	GASKET
38	1655574	1	COVER ASSY., Gear Case
39	165067	1	DRUM, Brake
40	930543	1	SETSCREW, 5/16-18 x 1/2
41	163012	1	SEAL, Oil
42	163021	1	BUSHING
43	921977	8	CAPSCREW, Hex Hd., 5/16-18 x 1-1/4
44	917356	8	LOCKWASHER, 5/16
45	163028	1	AXLE ASSY., L.H.
46	921972	4	CAPSCREW, Hex Hd., 3/8-16 x 2-1/2
47	163054	1	PLATE ASSY., Diff
48	158579	4	PINION, Diff.
49	121084	3	SPACER, Diff.
50	162085	2	SPRING
51	121083	4	SPINDLE, Diff.
52	158365	1	BUSHING
53	930651	4	LOCKNUT, Hex, 3/8-16
54	163045	1	AXLE ASSY., R.H., W/Bushing
55	158358	1	CUP, Thrust
56	158363	2	BUSHING
57	163013	1	GEAR, Drive
58	165013	1	GEAR & SHAFT ASSY.
59	165009	1	SHAFT & GEAR ASSY.
60	156292	1	PIN, Dowel
61	901653	1	PLUG, Pipe
62	163074	1	PLUG, Expansion
63	163094	1	CASE ASSY., Gear
64	163017	1	RING, Snap
65	163015	1	WASHER
66	163088	1	WASHER
67	163014	1	WASHER
68	163009	1	GASKET
69	163056	1	PLATE ASSY., Support
70	163019	1	SEAL, Oil
71	916965	3	LOCKWASHER, 3/8
72	921966	3	CAPSCREW, Hex Hd., 3/8-16 x 7/8

NOTE: Parts Reference No. 1-37 found on preceding page.



Ref. No.	Part No.	Qty.	Description
1	156119	1	PULLEY, Transmission
2	8021050	1	KNOB
3	162046	1	LEVER ASSY., Shift
4	923358	1	LOCKNUT, Hex. 1/4-20
5	923341	1	CAPSCREW, Hex Hd., 1/4-20 x 3/4
6	156031	1	ROD ASSY., Shift
7	101042	2	BUSHING, Half
8	163050	2	PLUG
9	163022	4	BUSHING
10	918213	3	NUT, Hex. Full, 7/16-14
11	930676	1	PLUG, Pipe
12	156308	2	PIN ASSY., Roll
13	918113	1	PIN, Roll, 3/8 x 1
14	156085	2	WASHER
15	8061048	3	RING, Retaining
16	930670	1	KEY, Hi-Pro
17	156086	1	KEY
18	156077	1	SHAFT, Ref.
19	154262	2	BALL
20	154323	2	SPRING
21	171363	1	FORK, Shift, Reverse
22	156078	1	SHAFT, Hi-Lo
23	156080	1	FORK, Shift, I & II
24	1650625	1	PINION, Reverse
25	156082	1	BEARING, Roller
26	156087	1	PINION ASSY., Hi-Lo
27	156103	1	GASKET
28	163057	1	COVER ASSY., Gear Case (Includes Ref. Nos. 8, 9, 14 & 33)
29	156084	2	SEAL, Oil
30	928691	1	SETSCREW, 5/16-18 x 5/16
31	165067	1	DRUM, Brake
32	163012	1	SEAL, Oil
33	1657807	1	BUSHING
34	921977	8	CAPSCREW, Hex Hd., 5/16-18 x 1-1/4
35	917356	8	LOCKWASHER, 5/16
36	930669	1	KEY

NOTE: Parts Reference No. 37-88 cont'd. on the following page.

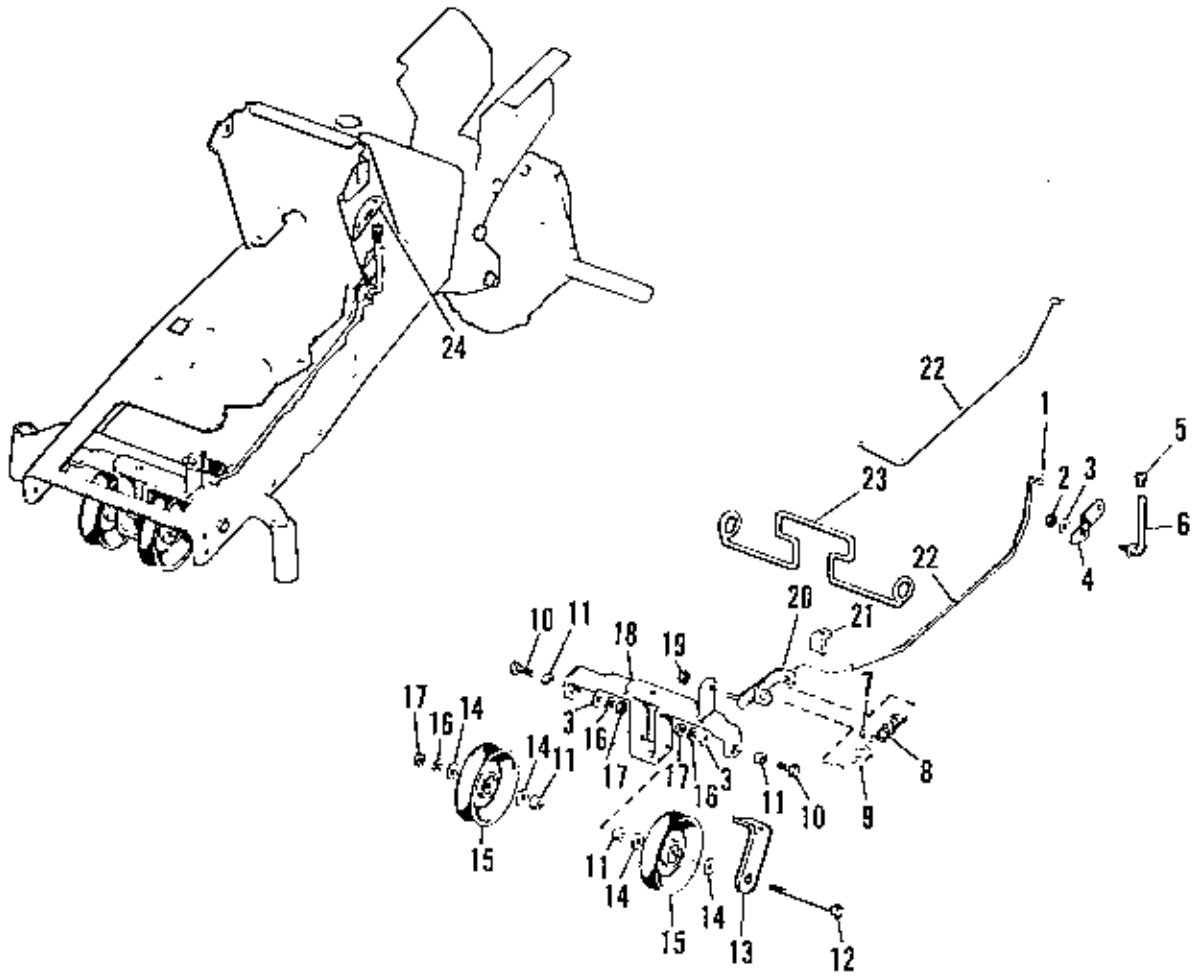


NOTE: Use standard hardware torque spec. Chart unless otherwise noted.



Ref. No.	Part No.	Qty.	Description
37	156081	1	SHAFT, Pinion, Reverse
38	163008	1	SHAFT, Pulley
39	156089	2	WASHER
40	901653	1	PLUG, Pipe, 3/8
41	163013	1	GEAR, Drive
42	156090	1	GEAR ASSY., Cluster
43	156290	1	SHAFT & GEAR ASSY.
44	156292	1	PIN, Dowel
45	121083	4	SPINDLE, Diff.
46	156088	1	SHAFT, Brake
47	158579	4	PINION, Diff.
48	158363	2	BUSHING
49	121084	4	SPACER, Diff.
50	919363	4	CAPSCREW, Hex Hd., 3/8-16 x 2-1/2
51	163028	1	AXLE ASSY., L.H.
52	163054	1	PLATE ASSY., Diff.
53	162085	2	SPRING
54	158358	1	CUP, Thrust
55	158365	1	BUSHING
56	930651	4	LOCKNUT, Hex, 3/8-16
57	163045	1	AXLE ASSY., R.H. w/Bushing
58	163074	1	PLUG, Expansion
59	163094	1	CASE ASSY., Gear (Includes Ref. Nos. 6, 7, 8, 9, 13 & 14)
60	163009	1	GASKET
61	163017	1	RING, Snap
62	163015	1	WASHER
63	163088	1	WASHER
64	163014	1	WASHER
65	163056	1	PLATE ASSY., Support
66	163019	1	SEAL, Oil
67	916965	3	LOCKWASHER, 3/8
68	921966	3	CAPSCREW, Hex Hd., 3/8-16 x 7/8

NOTE: Parts Reference No. 1-36 found on preceding page.



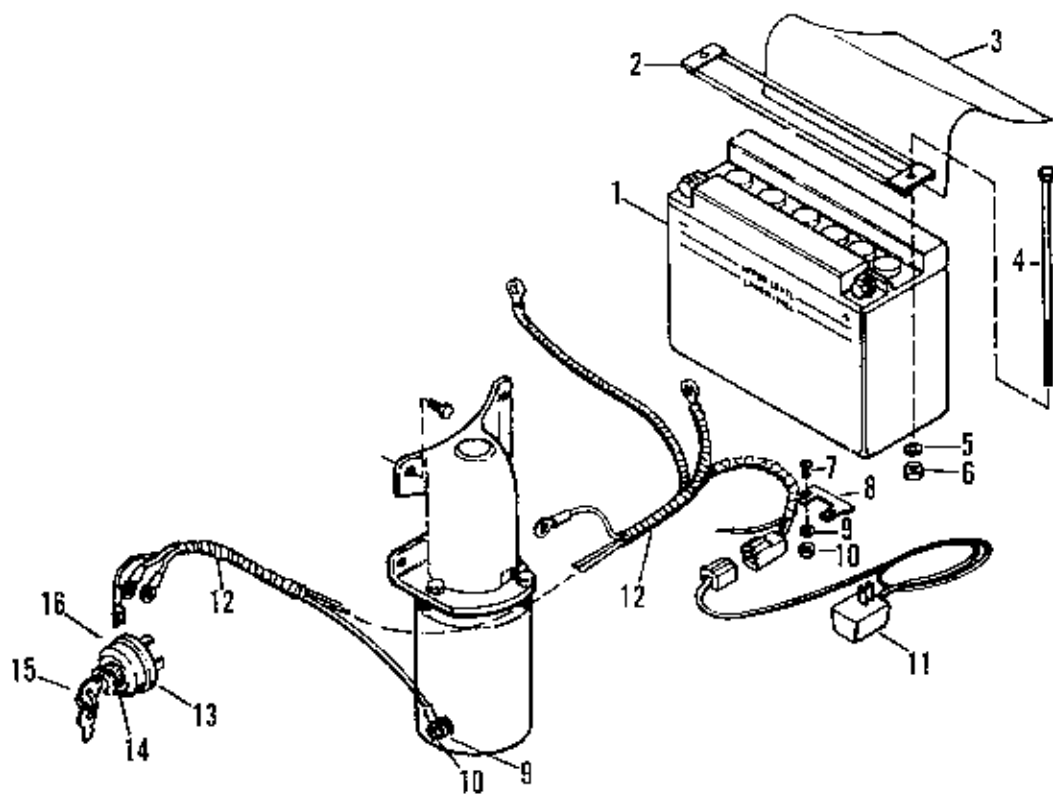
NOTE: Use standard hardware  
torque spec. chart unless  
otherwise noted.

## Power Take Off Group

**Simplicity**

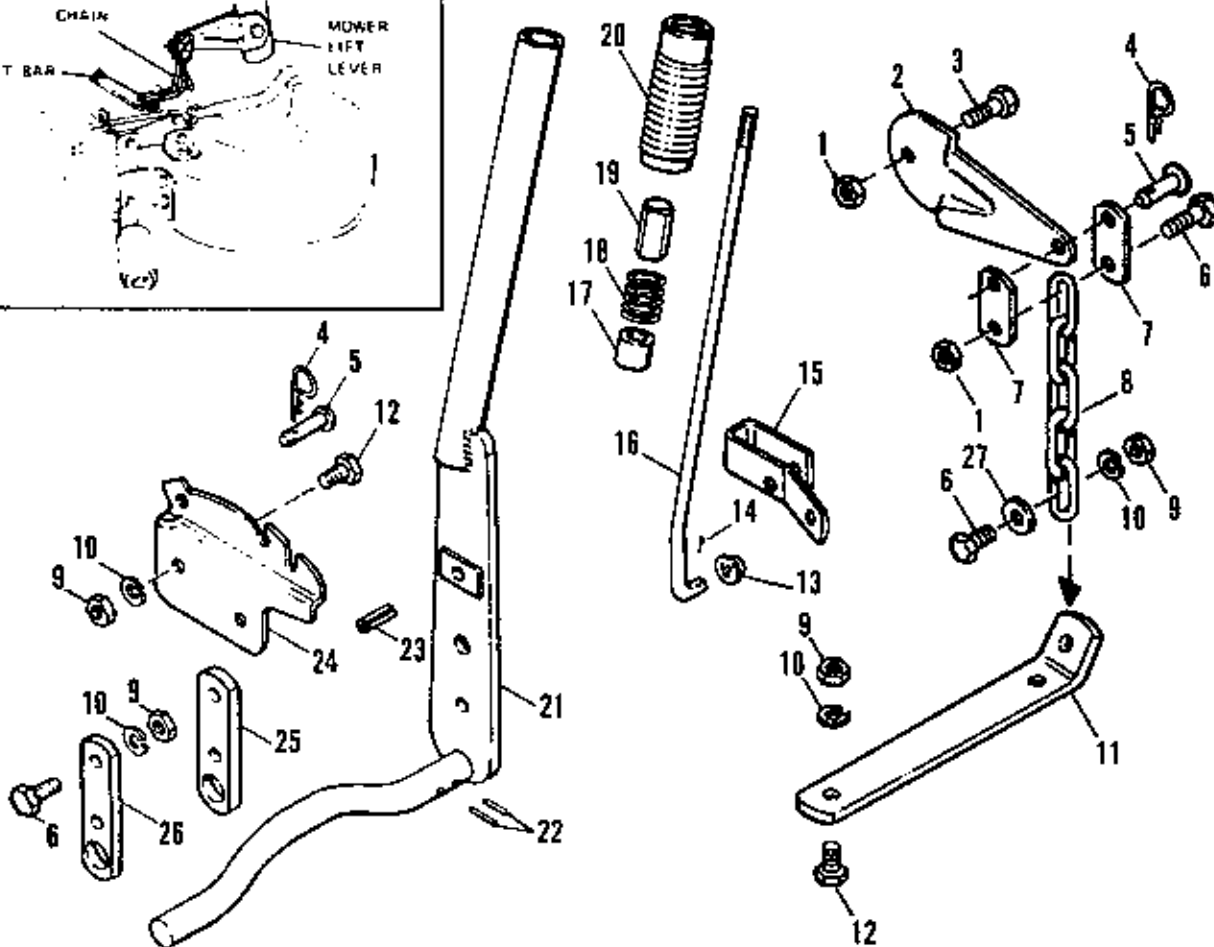
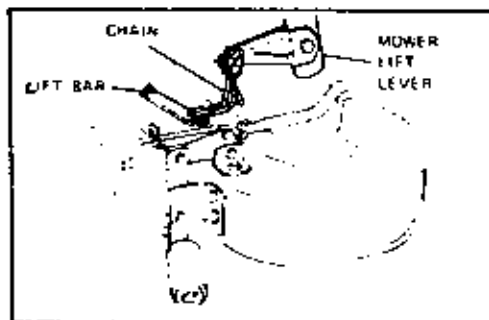
3/80

Rel. No.	Part No.	Qty.	Description
1	922000	1	PIN, Cotter, 3/32 x 3/4
2	930851	1	LOCKNUT, Hex, 3/8-16
3	917378	3	WASHER, Plain, 3/8
4	163061	1	LEVER, Handle
5	159112	1	KNOB
6	158186	1	HANDLE
7	928804	1	SETSCREW, 1/4-20 x 3/8
8	163103	1	SPRING
	8191045	1	SPRING (990481 Only)
9	8191022	1	COLLAR, Set
10	921210	2	CAPSCREW, Hex Hd., 3/8-16 x 1
11	154177	4	SPACER
	153073	2	SPACER (990481 Only)
12	920260	1	CAPSCREW, Hex Hd., 3/8-16 x 4-1/4
13	162115	1	STOP, Belt (Not used on 990481 Only)
14	917642	4	WASHER, Plain, 5/16
15	101096	2	PULLEY, Idler
16	916965	3	LOCKWASHER, 3/8
17	916950	3	NUT, Hex, Full, 3/8-16
18	163063	1	CLEVIS ASSY., Pulley
19	923362	1	LOCKNUT, Hex, 5/16-18
20	163100	1	GUIDE ASSY., Rod
21	163112	1	BRACKET (990596, 990597, 990776, 990777 Only)
22	163096	1	ROD, Clutch
	163062	1	ROD, Clutch (990481 Only)
23	163080	1	STOP, Belt
24	162093	1	DECAL, P.T.O.



NOTE. Use standard hardware torque spec. chart unless otherwise noted.

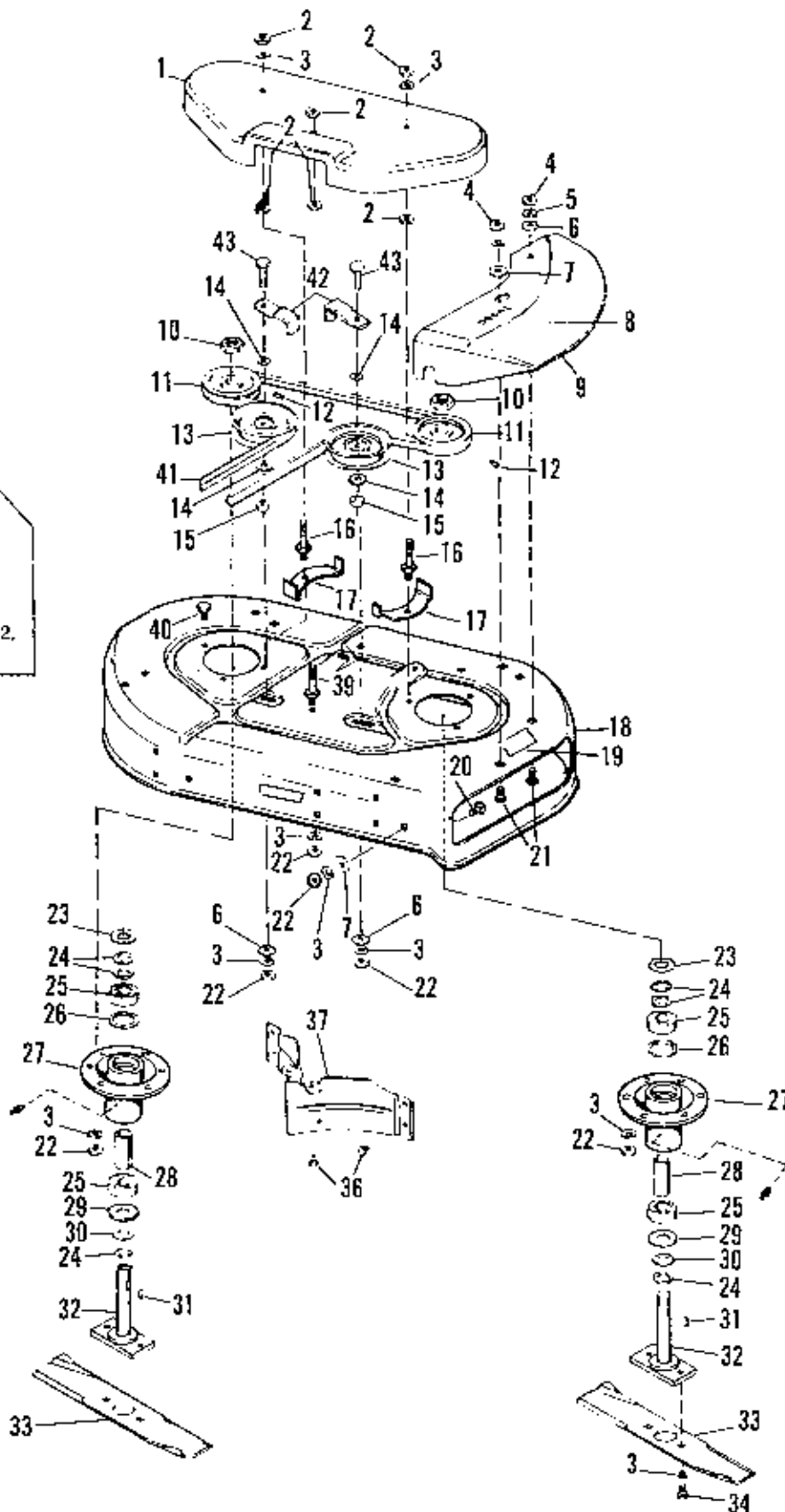
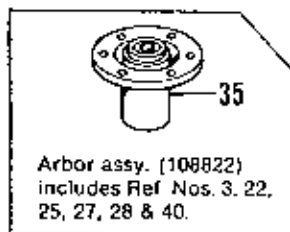
Ref. No.	Part No.	Qty.	Description
1	1657082	1	BATTERY
2	122227	1	HOLD DOWN, Battery
3	122143	1	INSULATION, Battery
4	928634	2	CAPSCREW, Hex Hd., 1/4-20 x 7
5	916964	2	LOCKWASHER, 1/4
6	916622	2	NUT, Hex, Full, 1/4-20
7	917452	2	SCREW, Machine, #10-32 x 1/2
8	122226	1	CLIP, Mounting
9	922711	2	LOCKWASHER, Ext., #10
10	917415	2	NUT, Hex, Full, #10-32
11	122221	1	CHARGER ASSY.
12	170047	1	HARNES ASSY.
13	122218	1	SWITCH, Key
14	122234	1	NUT, Hex, Special, 5/8-32
15	122203	1	KEYS
16	918906	1	LOCKWASHER, Int., 5/8



NOTE: Use standard hardware torque spec. chart unless otherwise noted.

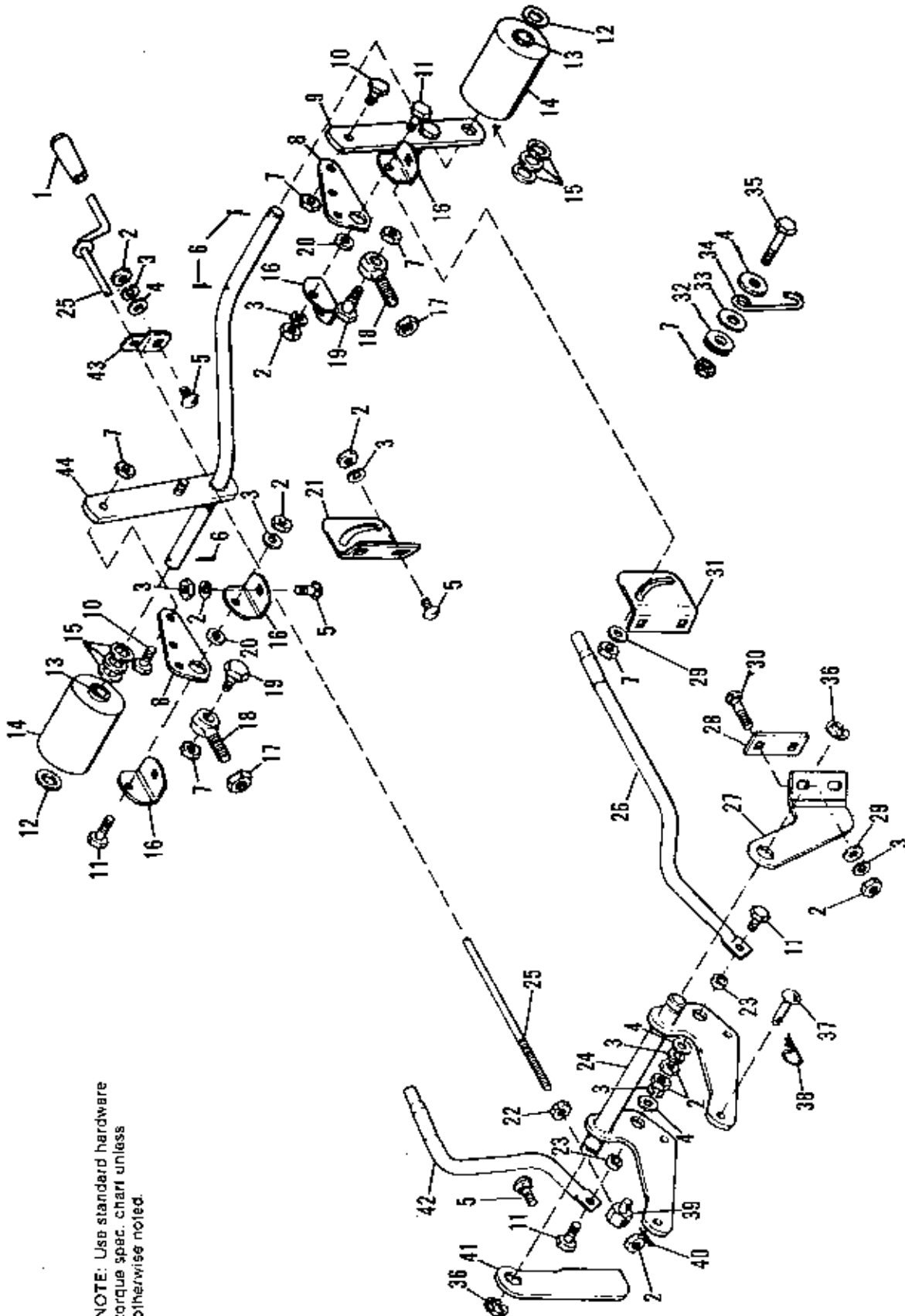
Ref. No.	Part No.	Qty.	Description
1	930651	2	LOCKNUT, Hex, 3/8-16
2	108385	1	LEVER, Lift
3	921966	1	CAPSCREW, Hex Hd., 3/8-16 x 7/8
4	8161045	2	CLIP, Spring
5	152058	2	PIN
6	921210	6	CAPSCREW, Hex Hd., 3/8-16 x 1
7	108199	2	LINK, Mower Lift
8	107031	1	CHAIN
9	916950	9	NUT, Hex, Full, 3/8-16
10	916965	9	LOCKWASHER, 3/8
11	108375	1	BAR, Lift
12	921965	4	CAPSCREW, Hex Hd., 3/8-16 x 3/4
13	170015	1	PUSHNUT
14	918447	1	PIN, Cotter, 3/32 x 3/4 (990485 Only)
15	154224	1	LATCH, Lift Lever
16	170094	1	ROD, Lift Lever
	185077	1	ROD, Lift Lever (990485 Only)
17	154226	1	SPACER
18	152006	1	SPRING
19	154227	1	BUTTON, Thumb
20	156209	1	GRIP, Handle
21	162066	1	LEVER ASSY., Lift
22	916001	2	PIN, Roll, 3/16 x 1
23	918113	1	PIN, Roll, 3/8 x 1
24	162068	1	QUADRANT
25	162069	1	BAR, Bearing, R.H.
26	162070	1	BAR, Bearing, L.H.
27	917378	1	WASHER, Plain, 3/8

NOTE. Use standard hardware torque spec. chart unless otherwise noted



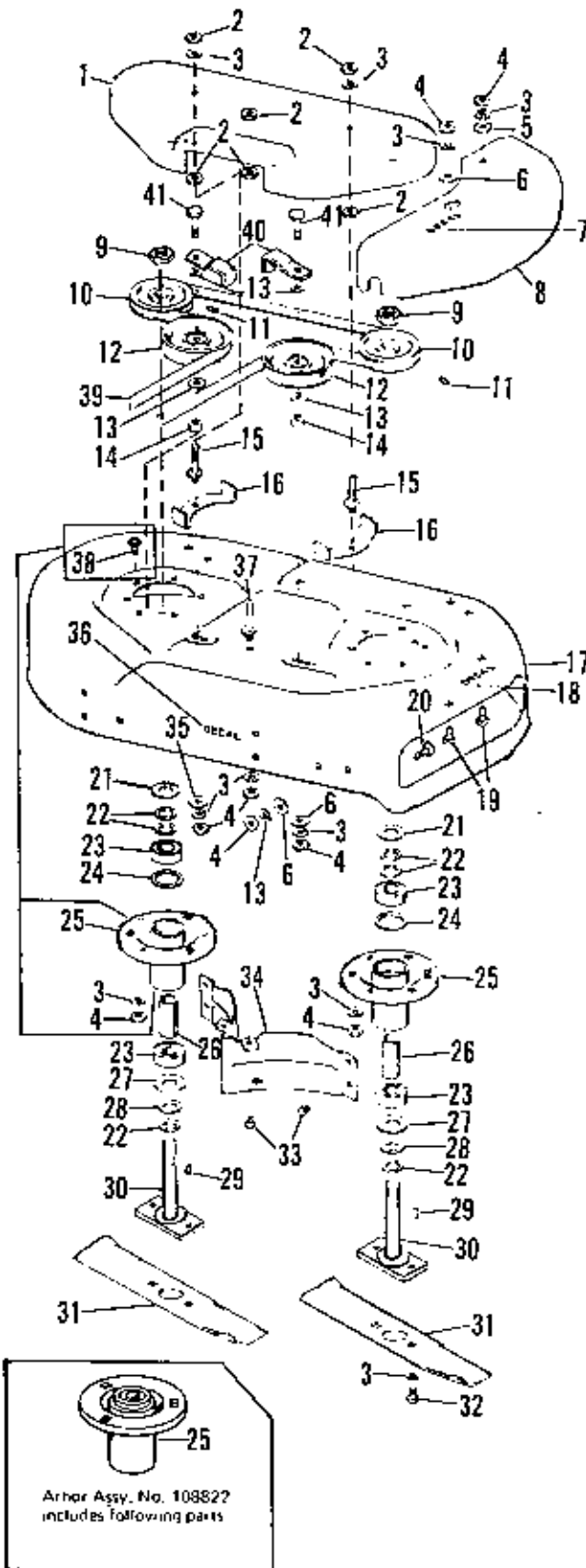


Ref. No.	Part No.	Qty.	Description
1	170203	1	COVER, Housing
2	930651	6	LOCKNUT, Hex, 3/8-16
3	916965	6	LOCKWASHER, 3/8
4	917372	2	NUT, Hex, Full, 5/16-18
5	917356	2	LOCKWASHER, 5/16
6	917642	4	WASHER, Plain, 5/16
7	8161199	2	WASHER
8	103031	1	DECAL, Safety
9	108504	1	DEFLECTOR
10	922133	2	LOCKNUT, Hex, 3/4-16
11	177005	2	PULLEY
12	930544	2	SETSCREW, 5/16-18 x 3/8
13	106716	2	PULLEY, Idler
14	917378	4	WASHER, Plain, 3/8
15	154177	2	SPACER
16	106771	2	STUD
17	170163	2	GUIDE, Belt
18	158614	1	HOUSING, Mower, 28"
19	108507	1	FILM, Safety
20	922110	1	BOLT, Carriage, 3/8-16 x 3/4
21	920562	2	BOLT, Carriage, 5/16-18 x 3/4
22	916950	4	NUT, Hex, Full, 3/8-16
23	108139	2	FLINGER
24	108181	6	WASHER
25	108202	4	BEARING
26	108134	2	RING, Backing
27	108679	2	TUBE ASSY., Arbor
28	108201	2	SPACER
29	108257	2	WASHER
30	108472	2	WASHER
31	918312	2	KEY
32	108250	2	ARBOR ASSY.
33	1656144	2	BLADES
34	922586	4	CAPSCREW, Hex Hd., 3/8-16 x 5/8
35	108822	1	ARBOR ASSY., W/Bearings
36	927428	6	SCREW, Hex, Self Tapping, 1/4-20 x 3/8
37	108531	1	BAFFLE
38	155061	1	DECAL, Simplicity
39	108372	1	STUD
40	921965	6	CAPSCREW, Hex Hd., 3/8-16 x 3/4
41	108514	1	V-BELT, Drive
42	106717	2	GUIDE, Belt
43	921971	2	CAPSCREW, Hex Hd., 3/8-16 x 1-3/4

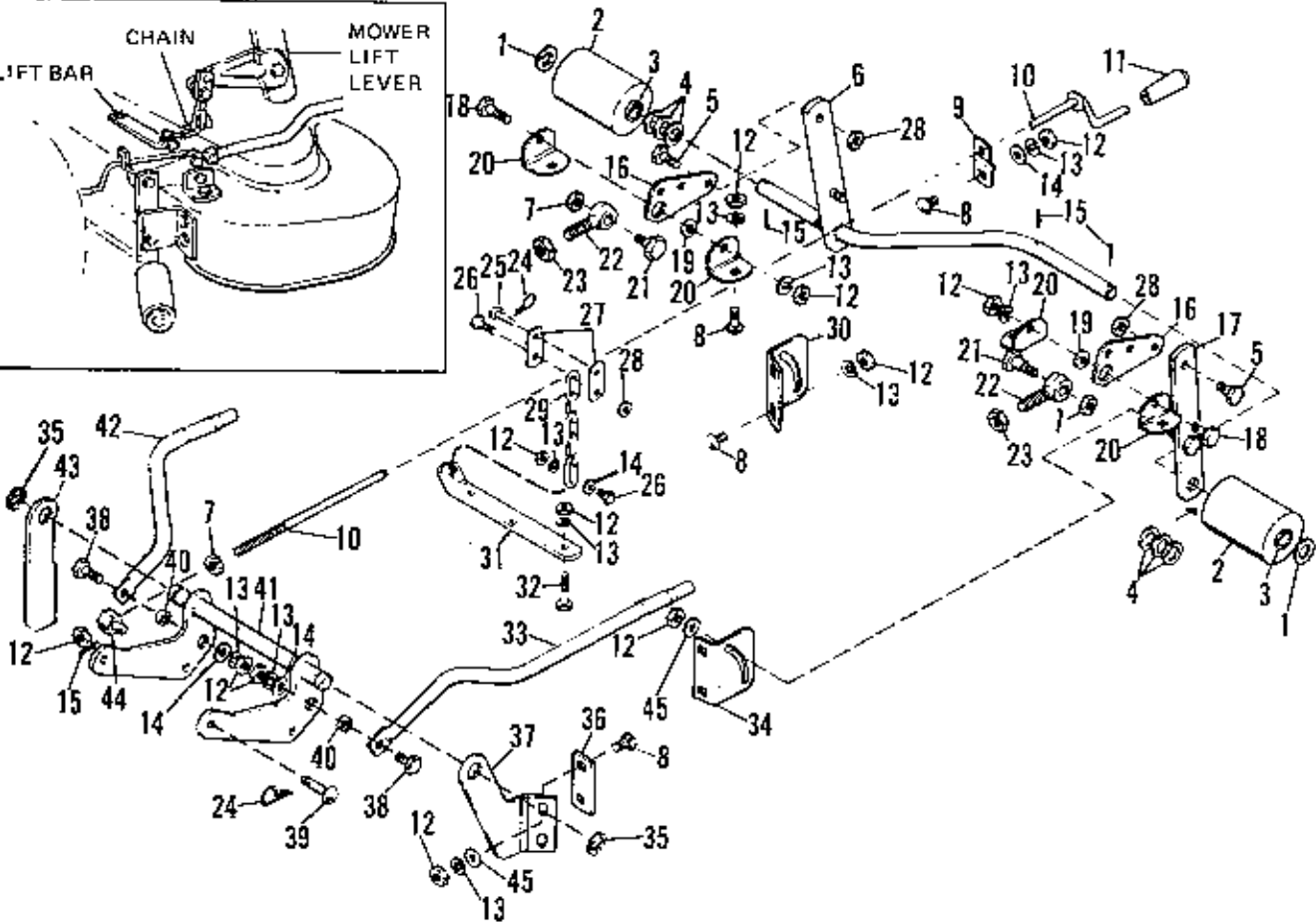
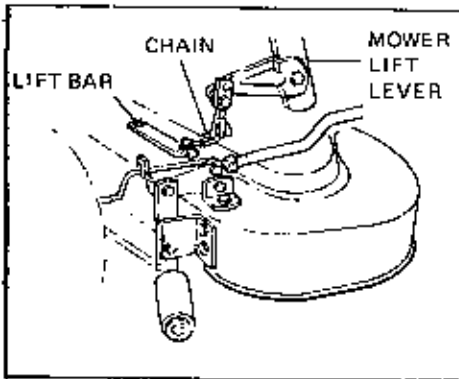


NOTE: Use standard hardware torque spec. chart unless otherwise noted.

Ref. No.	Part No.	Qty.	Description
1	108547	1	CAP, End
2	916950	17	NUT, Hex, Full, 3/8-16
3	916965	17	LOCKWASHER, 3/8
4	917378	4	WASHER, Plain, 3/8
5	922110	7	BOLT, Carriage, 3/8-16 x 3/4
6	918458	3	PIN, Cotter, 3/16 x 1
7	930651	7	LOCKNUT, Hex, 3/8-16
8	108161	2	LEVER, Rear
9	108256	1	BAR ASSY., Roller
10	921966	2	CAPSCREW, Hex Hd., 3/8-16 x 7/8
11	921210	4	CAPSCREW, Hex Hd., 3/8-16 x 1
12	116001	2	WASHER
13	108419	4	BUSHING
14	108431	2	ROLLER ASSY.
15	8261055	6	WASHER
16	108513	4	BRACKET, Pivot
17	919262	2	LOCKNUT, Hex, Jam, 1/2-20
18	157215	2	EYEBOLT
19	108412	2	BOLT, Shoulder
20	108511	2	SPACER
21	108517	1	BRACKET, Roller, R.H.
22	917421	1	LOCKNUT, Hex, Jam, 3/8-16
23	121349	2	SPACER
24	108552	1	HITCH ASSY., Mower
25	108526	1	SCREW ASSY., Adjusting
26	108520	1	ARM, Adjusting, L.H.
27	108518	1	BRACKET, Front, L.H.
28	108509	2	SPACER
29	917642	6	WASHER, Plain, 5/16
30	921933	4	BOLT, Carriage, 3/8-16 x 1-1/4
31	108516	1	BRACKET, Roller, L.H.
32	930667	1	LOCKWASHER, Double, 3/8
33	159134	1	WASHER, Nylon
34	108551	1	LIFT, Mower
35	920415	1	CAPSCREW, Hex Hd., 3/8-16 x 1-1/4
36	157286	2	RING, Retaining
37	156306	2	PIN
38	8161045	2	CLIP, Spring
39	108512	1	PIVOT
40	918447	1	PIN, Cotter, 3/32 x 3/4
41	108519	1	BRACKET, Front, R.H.
42	108521	1	ARM, Adjusting, R.H.
43	108510	1	BRACKET, Screw, Adjusting
44	108528	1	SHAFT ASSY., Roller Bar



Ref. No.	Part No.	Qty.	Description
1	108530	1	COVER, Housing
2	930651	6	LOCKNUT, Hex, 3/8-16
3	916965	18	LOCKWASHER, 3/8
4	916950	17	NUT, Hex, Full, 3/8-16
5	917642	1	WASHER, Plain, 5/16
6	8161199	1	WASHER, Special
7	103031	1	DECAL, Safety
8	108504	1	DEFLECTOR
9	922133	2	LOCKNUT, Hex, Jam, 3/4-16
10	108142	2	PULLEY
11	930544	2	SETSCREW, 5/16-18 x 3/8
12	106716	2	PULLEY, Idler
13	917378	4	WASHER, Plain, 3/8
14	154177	2	SPACER
15	106771	2	STUD
16	108515	2	GUIDE, Belt
17	108482	1	HOUSING, Mower
18	108507	1	DECAL, Safety
19	920562	2	BOLT, Carriage, 5/16-18 x 3/4
20	922110	1	BOLT, Carriage, 3/8-16 x 3/4
21	108139	2	FLINGER
22	108181	6	WASHER
23	108202	4	BEARING
24	108134	2	RING, Backing
25	108822	2	TUBE ASSY., Arbor
26	108201	2	SPACER
27	108257	2	WASHER
28	108472	2	WASHER
29	918312	2	KEY, Woodruff, #61
30	108250	2	ARBOR ASSY.
31	108298	2	BLADES
32	922586	2	CAPSCREW, Hex Hd., 3/8-16 x 5/8
33	927428	2	SCREW, Hex, Taptite, 1/4-20 x 3/8
34	108531	1	BAFFLE
35	917642	1	WASHER, Plain, 5/16
36	155061	1	DECAL, Simplicity
37	108372	1	STUD
38	921965	6	CAPSCREW, Hex Hd., 3/8-16 x 3/4
39	108514	1	V-BELT
40	106717	2	GUIDE, Belt
41	921971	2	CAPSCREW, Hex Hd., 3/8-16 x 1-3/4



NOTE: Use standard hardware torque spec. chart unless otherwise noted.

Rel. No.	Part No.	Qty.	Description
1	116001	2	WASHER
2	108431	2	ROLLER ASSY.
3	108419	4	BUSHING
4	8261055	6	WASHER
5	921966	2	CAPSCREW, Hex Hd., 3/8-16 x 7/8
6	108528	1	ROLLER BAR & SHAFT ASSY.
7	917421	3	LOCKNUT, Hex, Jam, 3/8-16
8	922110	9	BOLT, Carriage, 3/8-16 x 3/4
9	108510	1	BRACKET, Screw, Adjusting
10	108526	1	SCREW ASSY., Adj.
11	108547	1	CAP, End
12	916950	15	NUT, Hex, Full, 3/8-16
13	916965	15	LOCKWASHER, 3/8
14	917378	4	WASHER, Plain, 3/8
15	918458	4	PIN, Colter, 3/16 x 1
16	108161	2	LEVER, Rear
17	108256	1	BAR ASSY., Roller
18	921210	2	CAPSCREW, Hex Hd., 3/8-16 x 1
19	108511	2	SPACER
20	108513	4	BRACKET, Pivot
21	108412	2	BOLT, Shoulder
22	157215	2	BOLT, Eye
23	919262	2	LOCKNUT, Hex, Jam, 1/2-20
24	8161045	3	CLIP, Spring
25	153058	1	PIN
26	921210	1	CAPSCREW, Hex Hd., 3/8-16 x 1
27	108199	2	LINK, Lift, Mower
28	930651	3	LOCKNUT, Hex, 3/8-16
29	107031	1	CHAIN
30	108517	1	BRACKET, Roller, R.H.
31	108375	1	BAR, Lift
32	921965	1	CAPSCREW, Hex Hd., 3/8-16 x 3/4
33	108520	1	ARM, Adjusting, L.H.
34	108516	1	BRACKET, Roller, L.H.
35	157288	2	RING, Retaining
36	108509	2	BAR, Spacer
37	108518	1	BRACKET, Front, L.H.
38	921210	2	CAPSCREW, Hex Hd., 3/8-16 x 1
39	156306	2	PIN
40	121349	2	SPACER
41	108552	1	HITCH ASSY., Mower
42	108521	1	ARM, Adjusting, R.H.
43	108519	1	BRACKET, Front, R.H.
44	108512	1	PIVOT
45	917642	6	WASHER, Plain, 5/16














**TORQUE SPECIFICATIONS FOR  
STANDARD MACHINE HARDWARE**  
TOLERANCE  $\pm 20\%$

SIZE	SAE GRADE #2		SAE GRADE #5		SAE GRADE #8	
						
8-32	19	In. Lbs.	30	In. Lbs.	41	In. Lbs.
8-36	20	"	31	"	43	"
10-24	27	"	43	"	60	"
10-32	31	"	49	"	68	"
1/4-20	66	"	8	Ft. Lbs	12	Ft. Lbs.
1/4-28	76	"	10	"	14	"
5/16-18	11	Ft. Lbs	17	"	25	"
5/16-24	12	"	19	"	25	"
3/8-16	20	"	30	"	45	"
3/8-24	23	"	35	"	50	"
7/16-14	30	"	50	"	70	"
7/16-20	35	"	55	"	80	"
1/2-13	50	"	75	"	110	"
1/2-20	55	"	90	"	120	"
9/16-12	65	"	110	"	150	"
9/16-18	75	"	120	"	170	"
5/8-11	90	"	150	"	220	"
5/8-18	100	"	180	"	240	"
3/4-10	160	"	260	"	386	"
3/4-16	180	"	300	"	420	"
7/8-9	140	"	400	"	600	"
7/8-14	155	"	440	"	660	"
1-8	220	"	580	"	900	"
1-12	240	"	640	"	1,000	"

**NOTES:**

1. These torque values are to be used for all Simplicity hardware excluding: locknuts, self-tapping screws, thread forming screws, and sheet metal screws.
2. Unless otherwise noted in installation procedures all torque values must meet this specification.

**BOLT HEAD MARKING  
S.A.E. GRADE:**

- 2 
- 5 
- 8 