



Conquest

4WD Series Garden Tractors & Mower Decks

23HP Product

Mfg. No.	Description
1695415	Conquest, 23HP B&S Hydro 4WD
2690679	Conquest, 23HP Hydro 4WD RMO and 50" Mower Deck (CE/Export)
2690744	Conquest, 23HP Hydro 4WD RMO and 50" Mower Deck

Mower Decks

Mfg. No.	Description
1695395	50" Mower Deck

Not for
Reproduction

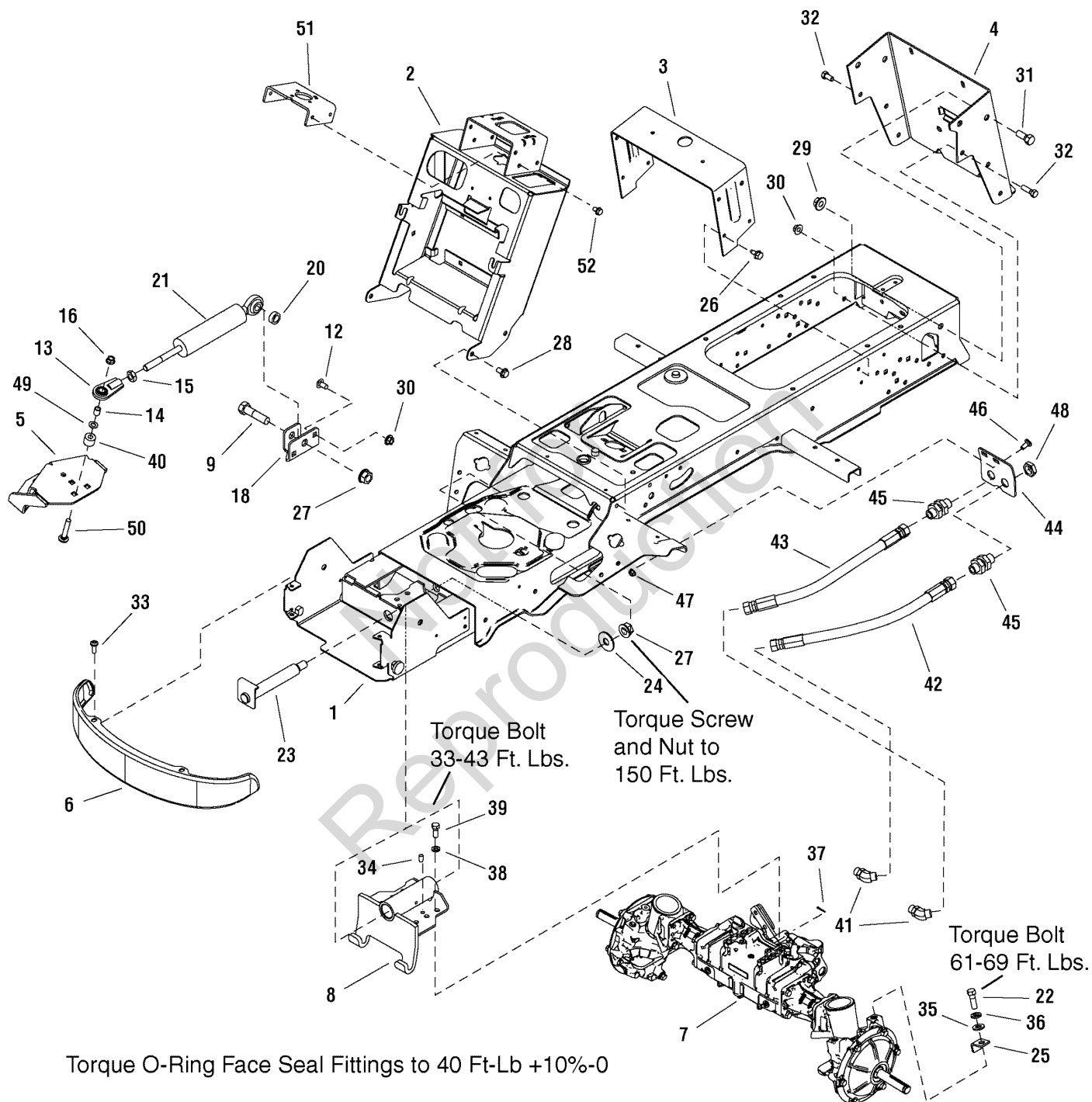
PRODUCT COMPONENTS	PAGES
Frame & Front Axle Group - 4WD	4
Power Steering & Hydraulic Lift Group	8
Steering Group - Tilt Steering	10
Engine Group - 20HP, 22HP & 23HP Briggs & Stratton, Vanguard Twin	12
Transmission Group	14
Transaxle SERVICE PARTS - Tuff Torq KXH10NC	18
Controls Group	24
Cruise Control Group	26
Electrical Group	28
Hood, Grille & Dash Group	32
Seat & Seat Deck Group	34
Lift Group - Manual Lift	36
Wheels & Tires Group	38
Decals Group	40
44" & 50" Mower Deck - Clutch & Support Group	42
50" Mower Deck - Height Adjustment & Roller Bar Group	44
50" Mower Deck - Height Adjustment & Roller Bar Group	46
50" Mower Deck - Housing, Arbors & Blades Group	50
50" Mower Deck - Housing, Arbors & Blades Group	54
Torque Specification Chart	Inside Back Cover

Not for
Reproduction

Frame & Front Axle Group - 4WD

987590

NOTE: Unless noted otherwise,
use the standard hardware torque
specification chart.



The above parts group applies to the following Mfg. Nos.:

- 1695415 - Conquest
- 2690679 - Conquest
- 2690744 - Conquest

Frame & Front Axle Group - 4WD

REF NO	PART NO.	QTY.	DESCRIPTION
1	1734731ASM	1	FRAME ASSEMBLY, Front & Rear 4WD
2	1733139ASM	1	TOWER & SUPPORT ASSEMBLY
3	1723528ASM	1	SUPPORT, Seat Deck
4	1722602ASM	1	BACKPLATE, Hitch
5	1733918ASM	1	BRACKET ASSEMBLY, Steering 4WD
6	1721805ASM	1	BUMPER, 4GA
7	1733480SM	1	AXLE ASSEMBLY, Front
8	1734241ASM	1	PIVOT ASSEMBLY, Axle w/Bushings
9	1960755SM	1	CAPSCREW, Hex Head, 5/8-11 x 2-1/2 G5
12	1931348SM	2	CARRIAGE BOLT, 3/9-16 x 3/4 G5
13	1702779SM	1	JOINT, Ball 1/2-20
14	1708236SM	1	SPACER
15	1919262SM	1	NUT, Hex Jam, 1/2-20
16	1930645SM	1	NUT, Hex Flange, 3/8-16 Two-Way Lock
18	1733166ASM	1	BRACKET, Cylinder Mounting
20	2172914SM	1	SPACER
21	1733759SM	1	CYLINDER, Hydraulic Steering
22	197487SM	3	CAPSCREW, Hex Head, M12-1-3/4 x 35
23	1733863SM	1	SHAFT & BRACKET ASSEMBLY, Axle Pivot
24	1960035SM	2	WASHER, 5/8
25	1734511ASM	1	STOP, "L" Steering
26	1664847SM	4	SCREW, Hex Washer Head Taptite, 5/16-18 x 3/4
27	2860646SM	2	NUT, Hex Flange 5/8-11 Two-Way Lock
28	1923683SM	4	SCREW, Hex Washer head, Taptite, 3/8-16 x 3/4
29	2860668SM	2	NUT, Hex Flange 1/2-13 Whiz Lock
30	1928352SM	4	NUT, Hex Flange 3/8-16 Whiz Lock
31	1923114SM	2	CAPSCREW, Hex Head 1/2-13 x 1 G5
32	1921210SM	2	CAPSCREW, Hex Head 3/8-16 x 1 G5
33	1960086SM	4	SCREW, Truss Head Torx Drive 5/16-18 x 7/8
34	1733581SM	2	PIN, Dowel
35	1960170SM	3	WASHER, 1/2
36	1916966SM	3	LOCKWASHER, Spring
37	1923360SM	1	PIN, Cotter
38	1960754SM	6	LOCKWASHER, Spring
39	1950036SM	6	CAPSCREW, Hex Head
40	1667812SM	1	SPACER, Powdered Metal
41	1733403SM	2	FITTING, Hose Elbow, 45 Degrees, 13/16-16 x 3/4-16
42	1733400SM	1	HOSE ASSEMBLY, Hydraulic
43	1737063SM	1	HOSE ASSEMBLY, Hydraulic
44	1733501ASM	1	BRACKET, Hose Mounting 10GA
45	1733402SM	2	FITTING, Bulkhead Union 13/16-16
46	1931333SM	2	CARRIAGE BOLT, 5/16-18 x 3/4 G5
47	1960636SM	2	NUT, Hex KEPS, 5/16-18

Footnotes

The above parts group applies to the following Mfg. Nos.:

1695415 - Conquest

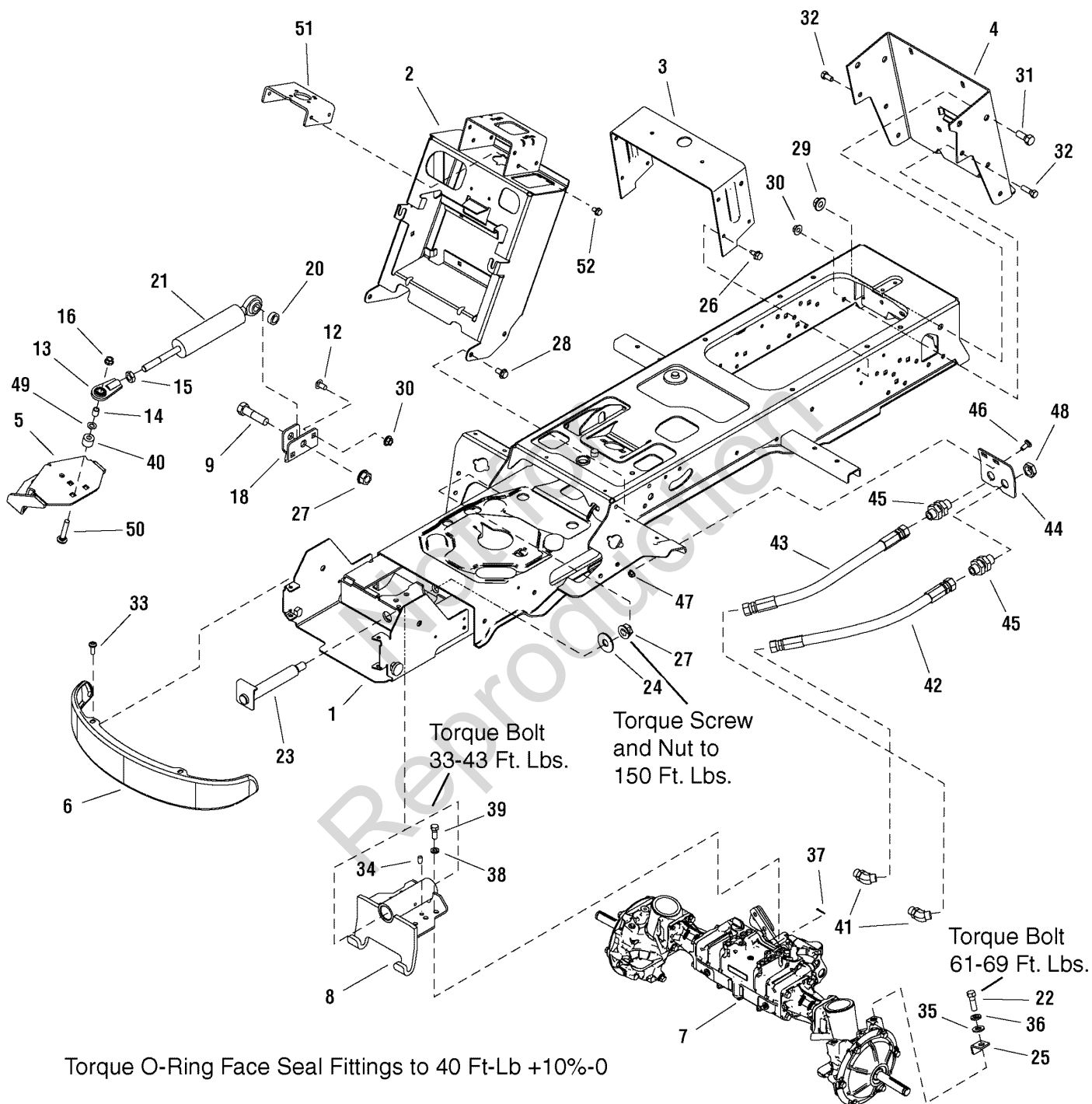
2690679 - Conquest

2690744 - Conquest

Frame & Front Axle Group - 4WD

987590

NOTE: Unless noted otherwise,
use the standard hardware torque
specification chart.



The above parts group applies to the following Mfg. Nos.:

- 1695415 - Conquest
- 2690679 - Conquest
- 2690744 - Conquest

Frame & Front Axle Group - 4WD

REF NO	PART NO.	QTY.	DESCRIPTION
48	1733947SM	2	NUT, Jam 13/16-16
49	1960103SM	1	WASHER, 3/8
50	1931355SM	1	CARRIAGE BOLT, 3/8-16 x 2-1/4 G5
51	1733044ASM	1	SUPPORT, Steering Unit 7GA
52	1924856SM	4	SCREW, Hex Washer Head Taptite 5/16-18 x 1/2

Not for
Reproduction

Footnotes

The above parts group applies to the following Mfg. Nos.:

1695415 - Conquest

2690679 - Conquest

2690744 - Conquest

Power Steering & Hydraulic Lift Group

REF NO	PART NO.	QTY.	DESCRIPTION
1	1733409SM	1	POWER STEERING UNIT, 32CC, 4 Ports
2	1916964SM	4	LOCKWASHER, Spring
3	2860444SM	4	CAPSCREW, Hex Head
4	1722138SM	1	TUBE, Hydraulic
5	2825094SM	2	TIE, Self Locking
6	1733727SM	1	TUBE, Hydraulic
7	1931646SM	2	SCREW, Hex Whiz Lock Flange 1/4-20 x 1/2
8	1722123SM	4	FITTING, Straight
9	1719168SM	1	FILTER, Oil
10	1719169SM	1	BASE, Oil Filter
11	1733427SM	1	TUBE, Hydraulic
12	1733230SM	2	FITTING, Hose Elbow Perma Push 9/16-18
13	1722607SM	1	SCREW, Round Head Plastite
14	1722285SM	1	COVER, Lift
25	1733893SM	1	HOSE ASSEMBLY, 27" Port R
26	1733791SM	1	HOSE ASSEMBLY, 18" Port T
27	1733780SM	1	HOSE ASSEMBLY, 26" Port P
28	1733595SM	1	HOSE ASSEMBLY, 31" Port L
29	1733894SM	1	POWER STEERING ASSEMBLY (Includes Ref Nos 1, 25, 26, 27 & 28)

Not for
Reproduction

Footnotes

The above parts group applies to the following Mfg. Nos.:

1695415 - Conquest

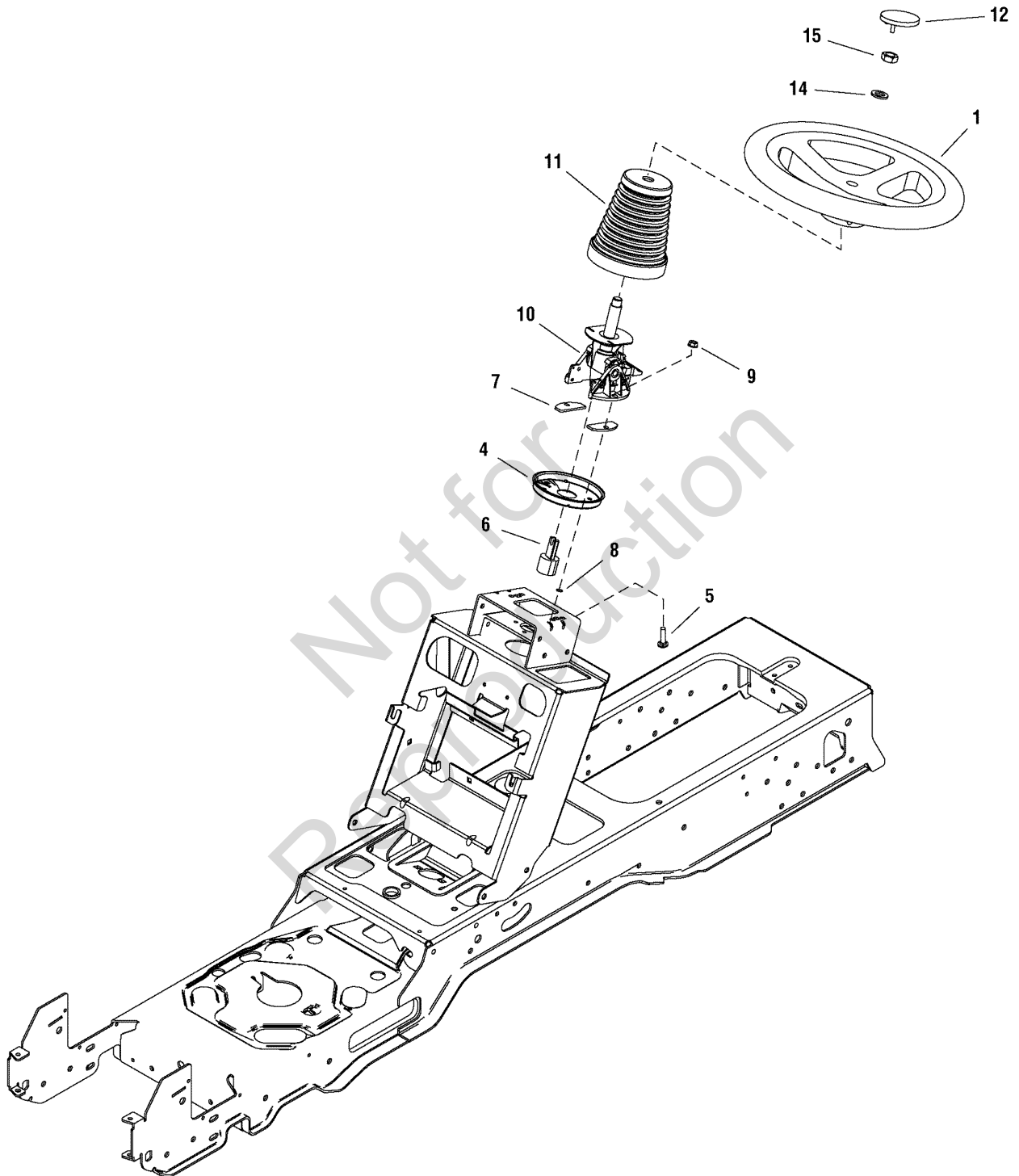
2690679 - Conquest

2690744 - Conquest

Steering Group - Tilt Steering

987424

NOTE: Unless noted otherwise,
use the standard hardware torque
specification chart.



The above parts group applies to the following Mfg. Nos.:

1695415 - Conquest

2690679 - Conquest

2690744 - Conquest

Steering Group - Tilt Steering

REF NO	PART NO.	QTY.	DESCRIPTION
1	1733363SM	1	STEERING WHEEL
4	1724685ASM	1	PLATE, Steering Mounting
5	1960655SM	2	CARRIAGE BOLT, 5/16-18 x 1-1/4 G5
6	1725294SM	1	ADAPTER, Tilt
7	1723898SM	2	SPACER
8	1933988SM	2	NUT, Push Pal
9	1960636SM	2	NUT, Hex Keps 5/16-18
10	1734002SM	1	STEERING UNIT, Tilt
11	1724368SM	1	BELLOWS, Tilt Steering Unit w/Slot
12	1725024SM	1	CAP, Steering Wheel
13	1716518SM	2	DECAL, Power Steering (Not Shown)
15	1960576SM	1	NUT, Hex Lock ESNA Light 5/8-18

Not for
Reproduction

Footnotes

The above parts group applies to the following Mfg. Nos.:

1695415 - Conquest

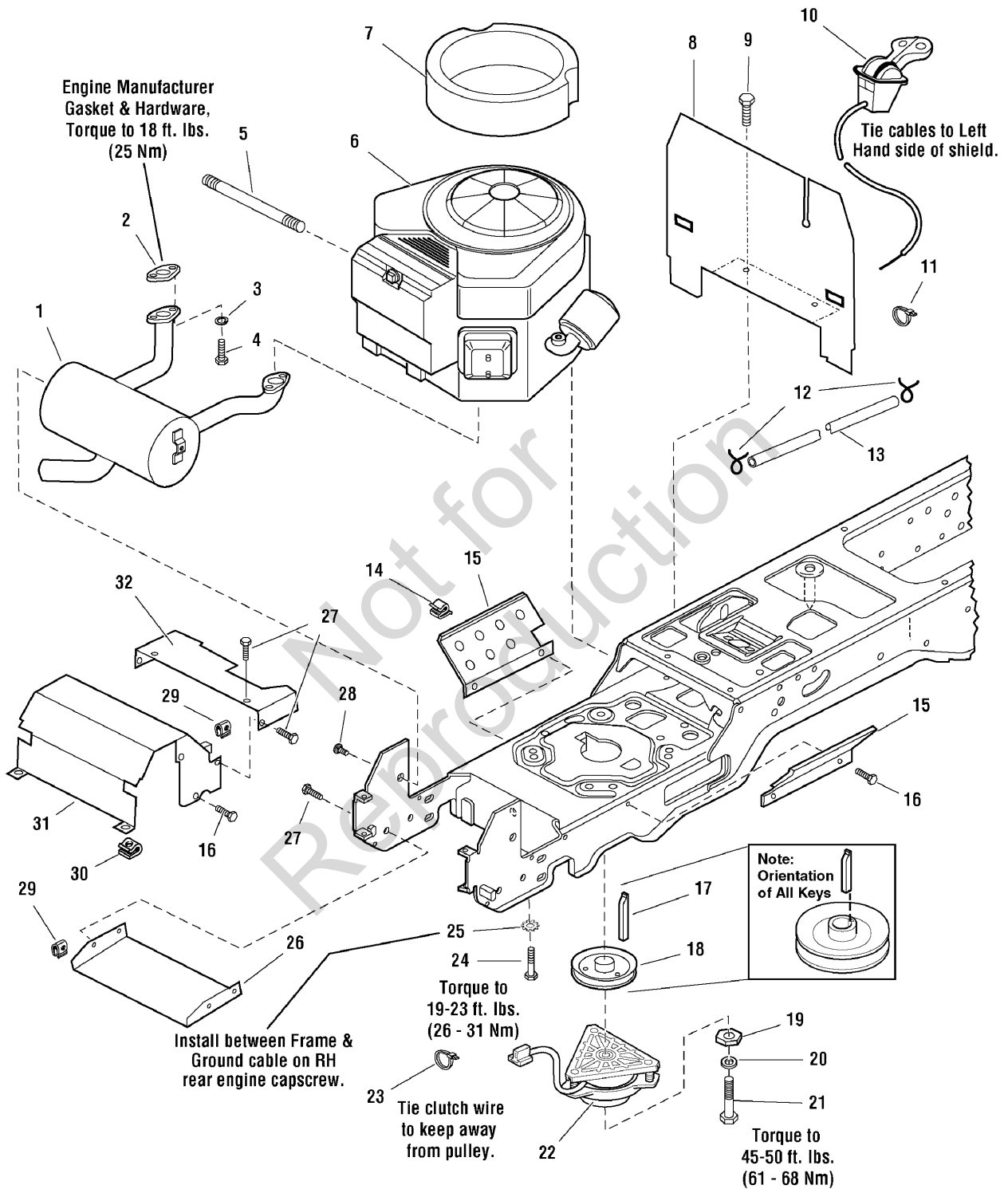
2690679 - Conquest

2690744 - Conquest

Engine Group - 20HP, 22HP & 23HP Briggs & Stratton, Vanguard Twin

986651

NOTE: Unless noted otherwise,
use the standard hardware torque
specification chart.



The above parts group applies to the following Mfg. Nos.:

- 1695415 - Conquest
- 2690679 - Conquest
- 2690744 - Conquest

Engine Group - 20HP, 22HP & 23HP Briggs & Stratton, Vanguard Twin

REF NO	PART NO.	QTY.	DESCRIPTION
1	1736543SM	1	MUFFLER
1	1722625SM	1	MUFFLER (Only used on 20HP Models)
2	*	2	GASKET
3	1917356SM	4	LOCKWASHER, 5/16
4	2860660SM	4	CAPSCREW, Socket Head, 5/16-18 x 7/8, G8
5	1723165SM	1	HOSE, Oil Drain
6	*	1	ENGINE, 22HP Briggs & Stratton VANGUARD Twin, Model 386777, Type 0111E1
6	*	1	ENGINE, 23HP Briggs & Stratton VANGUARD Twin, Model 386777, Type 0111E1
6	*	1	ENGINE, 21HP Briggs & Stratton VANGUARD Twin, Model 385777, Type 0119-E1
6	*	1	ENGINE, 20HP Briggs & Stratton VANGUARD Twin, Model 358777, Type 0110-E1
7	1722949SM	1	SEAL, Circle
8	1722388ASM	1	BULKHEAD
9	1925003SM	2	CAPSCREW, Hex Head Taptite, 1/4-20 x 1/2
10	1727223SM	1	CONTROL, Throttle Double 39" Long w/Knobs (Only used on 20HP Models)
10	1734506SM	1	CONTROL, Throttle Double
11	1701011SM	1	TIE
12	2860112SM	2	CLAMP, Hose Type E
13	1718678SM	1	HOSE, 59" Long
14	2834683SM	2	CLIP, Wire
15	1722392ASM	2	SHIELD
16	1927428SM	8	SCREW, Hex Head Taptite, 1/4-20 x 3/8
17	1720463SM	1	KEY
18	1722288SM	1	PULLEY & HUB ASSEMBLY, 4-1/2 OD
19	1708264SM	1	WASHER, Hex
20	1918199SM	1	LOCKWASHER, 7/16
21	1960648SM	1	CAPSCREW, Hex Head, 7/16-20 x 2-3/4
22	1686883SM	1	CLUTCH, Electric, OGURA
22	1720532SM	1	CLUTCH, Electric, Big Brake OGURA
23	2832747SM	1	TIE
24	2830598SM	4	CAPSCREW, Hex Head Taptite, 3/8-16 x 1-1/2
25	2820427SM	1	LOCKWASHER, External Tooth, 3/8
26	1722414ASM	1	SHIELD, Muffler Bottom
27	1960295SM	8	CAPSCREW, Hex Head Flange Lock, 1/4-20 x 5/8
28	1924856SM	2	CAPSCREW, Hex Head Taptite, 5/16-18 x 1/2
29	1960368SM	8	NUT, Speed, 1/4-20
30	1935255SM	2	NUT, Speed, 5/16-18
31	1722389ASM	1	DUCT, Muffler Top
32	1722390ASM	1	DUCT, Muffler Extension

Footnotes

Note* See your local Briggs & Stratton distributor for parts and service.

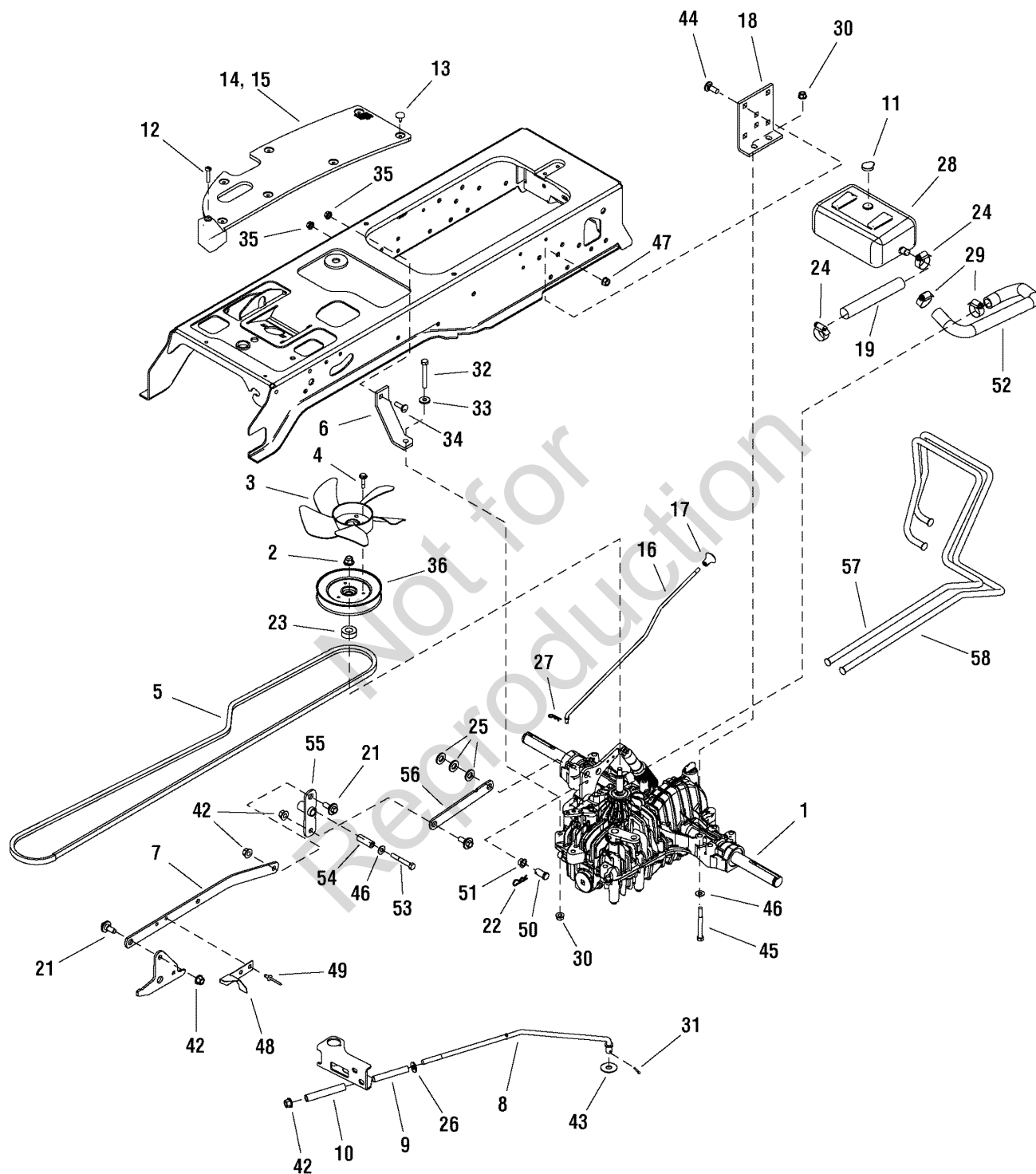
The above parts group applies to the following Mfg. Nos.:

1695415 - Conquest
2690679 - Conquest
2690744 - Conquest

Transmission Group

987547

NOTE: Unless noted otherwise,
use the standard hardware torque
specification chart.



The above parts group applies to the following Mfg. Nos.:

- 1695415 - Conquest
- 2690679 - Conquest
- 2690744 - Conquest

Transmission Group

REF NO	PART NO.	QTY.	DESCRIPTION
1	1733478SM	1	TRANSMISSION ASSEMBLY, K664
2	1722194SM	1	PULLEY & HUB ASSEMBLY
3	1719233SM	1	FAN
4	1933958SM	3	SCREW, Hex Washer Head, Taptite, 1/4-20 x 1-1/4
5	1721392SM	1	BELT, 94.05
6	1721593ASM	1	STRAP, 4-1/4 Long
7	1733318ASM	1	ARM, Control 7GA
8	1721424SM	1	ROD, 17-27/64 Long
9	1722684SM	1	SPRING, Compression
10	1729277SM	1	SPRING, Compression
11	1722711SM	1	CAP, Expansion
12	1960676SM	2	SCREW, Pan Head Torx, 1/4-20 x 1-1/4 Taptite
13	1704351SM	15	FASTENER, Panel
14	1722174SM	1	PAD, Footrest L.H.
15	1722173SM	1	PAD, Footrest R.H.
16	1721622SM	1	ROD, Free Wheel
17	1723126SM	1	KNOB, Interior Thread
18	1721728ASM	2	SUPPORT, Transmission
19	1733531SM	1	HOSE, Hydraulic
21	1732129SM	3	BOLT, Shoulder, 3/8-16
22	1960074SM	1	CLIP, Hair Pin
23	1734337SM	1	SPACER
24	2860266SM	1	CLAMP, Hose Worm
25	1960027SM	3	WASHER, 1/2
26	1924940SM	1	WASHER, 3/8
27	1722460SM	1	PIN, Quick
28	1732989SM	1	TANK, Oil Natural
29	1723214SM	2	CLAMP, Hose Worm
30	1960686SM	6	NUT, Hex Flange 5/16-18 ESNA
31	1918447SM	1	COTTER PIN
32	1921719SM	1	CAPSCREW, Hex Head 5/16-18 x 2-1/2 G5
33	1960141SM	1	WASHER, 5/16
34	1931335SM	1	CARRIAGE BOLT, 5/16-18 x 1 G5
35	1960636SM	2	NUT, Hex KEPS 5/16-18
36	1719968SM	1	NUT, Hex Flange
42	1960687SM	4	NUT, Hex Flange 3/8-16 ESNA
43	1918267SM	1	WASHER, 7/16
44	1931350SM	6	CARRIAGE BOLT, 3/8-16 x 1 G5
45	1960590SM	4	CAPSCREW, Hex Head 5/16-18 x 3 G5
46	1919326SM	3	WASHER, 5/16
47	1960637SM	6	NUT, Hex Keps 3/8-16
48	1727215ASM	1	ACTUATOR, Switch
49	1960241SM	2	POP RIVET

Footnotes

The above parts group applies to the following Mfg. Nos.:

1695415 - Conquest

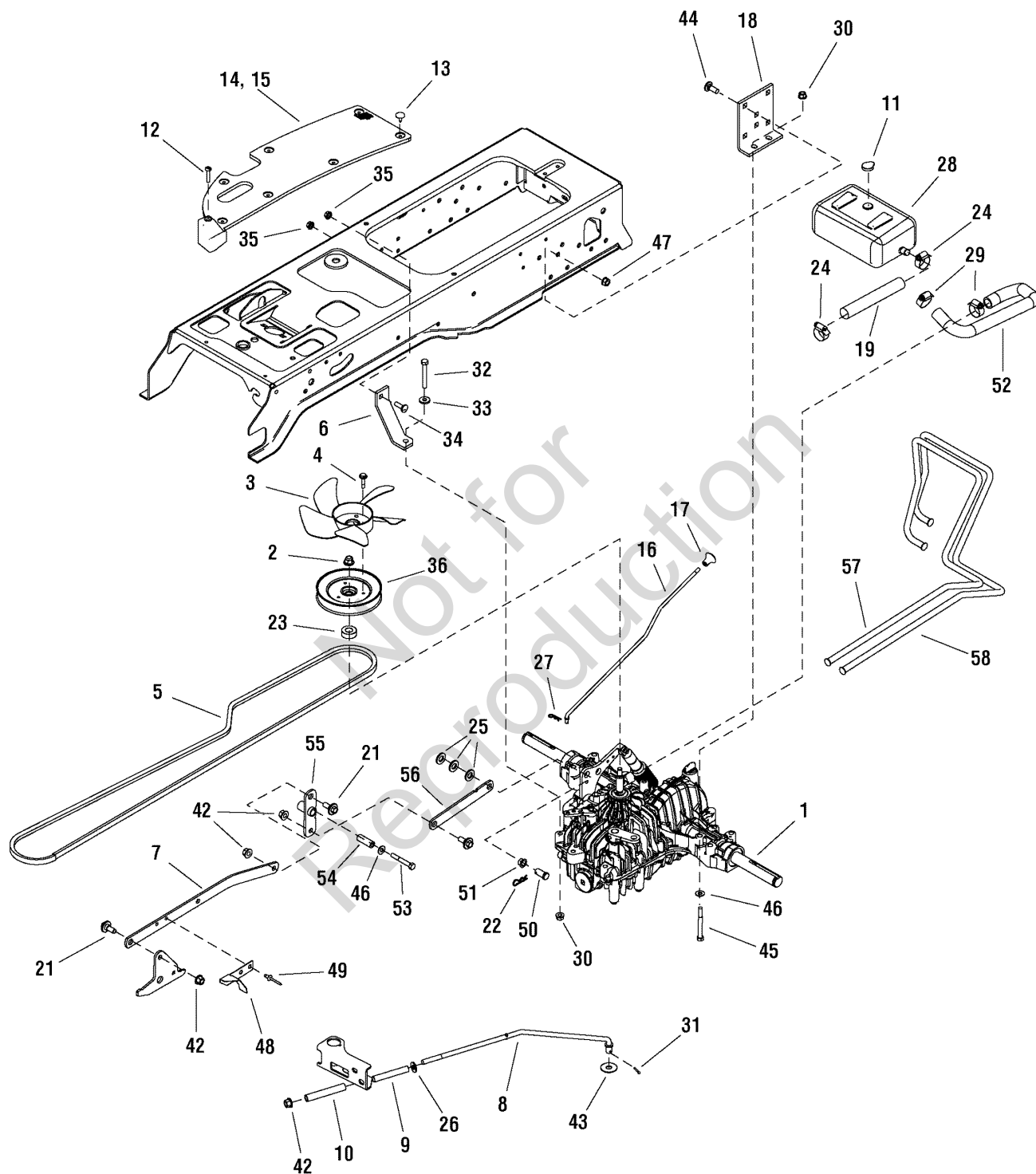
2690679 - Conquest

2690744 - Conquest

Transmission Group

987547

NOTE: Unless noted otherwise,
use the standard hardware torque
specification chart.



The above parts group applies to the following Mfg. Nos.:

- 1695415 - Conquest
- 2690679 - Conquest
- 2690744 - Conquest

Transmission Group

REF NO	PART NO.	QTY.	DESCRIPTION
50	1724107SM	1	PIN, Clevis
51	1722648SM	1	BEARING
52	1722468SM	1	HOSE, Hydraulic
53	1921160SM	1	CAPSCREW, Hex Head, 5/16-18 x 2-1/4 G5
54	1713588SM	1	SPACER
55	1733320ASM	1	PIVOT ASSEMBLY, Control
56	1733525ASM	1	ARM, Control
57	1733483SM	1	TUBE, Hydraulic 4WD
58	1733484SM	1	TUBE, Hydraulic Rear

Not for
Reproduction

Footnotes

The above parts group applies to the following Mfg. Nos.:

1695415 - Conquest

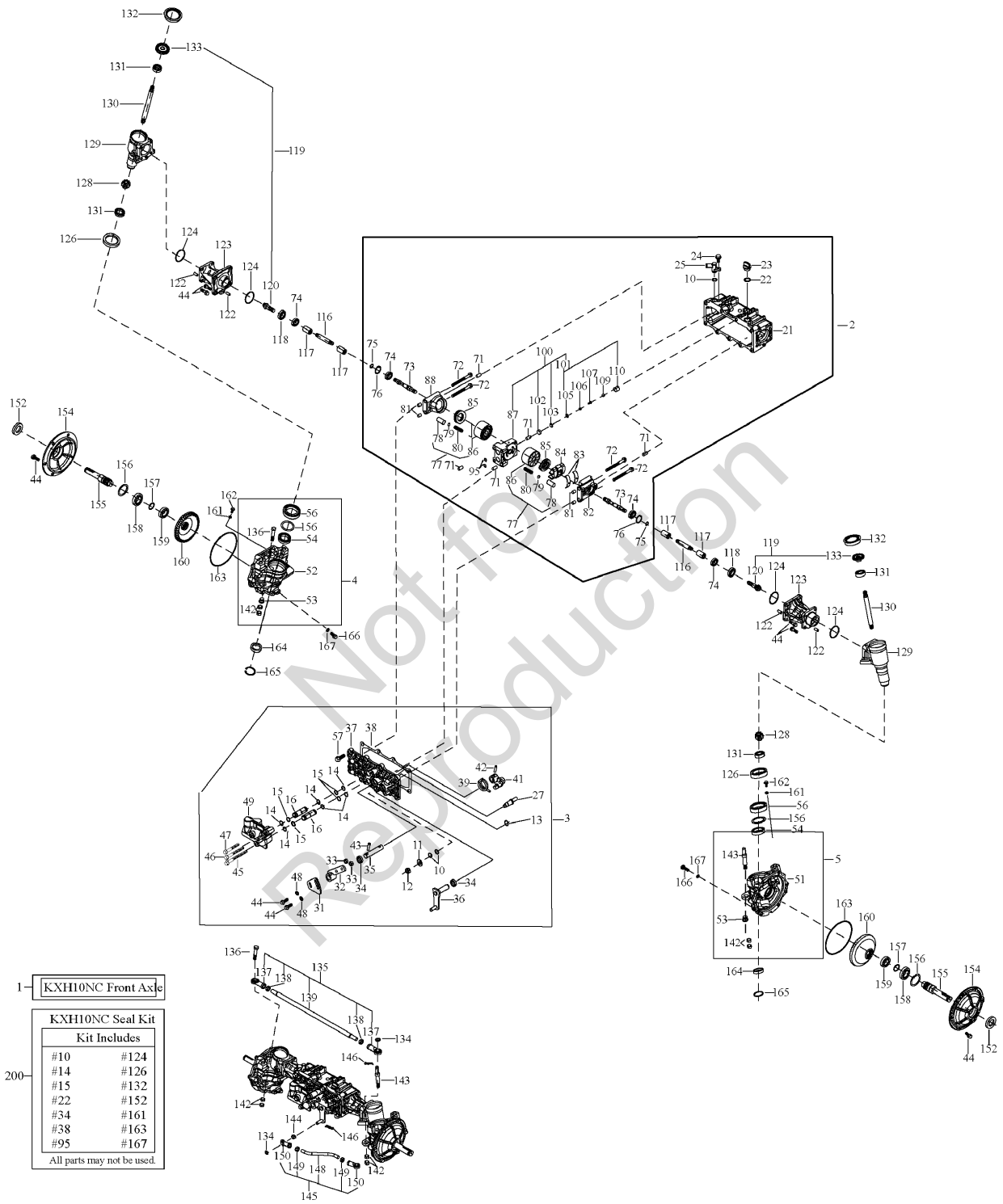
2690679 - Conquest

2690744 - Conquest

Transaxle SERVICE PARTS - Tuff Torq KXH10NC

1733480

**NOTE: Unless noted otherwise,
use the standard hardware torque
specification chart.**



The above parts group applies to the following Mfg. Nos.:

- 1695415 - Conquest
- 2690679 - Conquest
- 2690744 - Conquest

Transaxle SERVICE PARTS - Tuff Torq KXH10NC

REF NO	PART NO.	QTY.	DESCRIPTION
1	1733480SM	1	FRONT AXLE
2	*	1	MOTOR KIT 10CC
3	*	1	MOTOR COVER, Complete
4	*	1	FRONT GEAR BOX, Left, Complete
5	*	1	FRONT GEAR BOX, Right, Complete
10	1707879SM	1	O-RING 1A P14
11	1708689SM	1	WASHER 12
12	1708692SM	1	NUT 12
13	1707912SM	1	SNAP RING
14	1735417SM	1	PACKING P 14.0
15	1735418SM	1	BACK-UP RING
16	*	1	JOINT PIPE
21	*	1	FRONT AXLE CASE
22	1707786SM	1	O-RING P18
23	1735419SM	1	OIL CAP 20
24	1724695SM	1	BOLT 8 x 20
25	1735420SM	1	ELBOW
27	*	1	FULCRUM
31	*	1	ADJUST PLATE
32	*	1	CONTROL LEVER
33	1707898SM	1	NUT 8
34	*	1	SEAL TC 162607
35	*	1	CONTROL SHAFT
36	*	1	CAM LEVER
37	*	1	MOTOR COVER
38	1735421SM	1	GASKET COVER
39	*	1	RETURN SPRING
41	*	1	CONTROL ARM
42	1718097SM	1	SPRING PIN 6 x 25
43	*	1	SPRING PIN 6 x32
44	1720867SM	1	BOLT 8 x 25
45	*	1	BOLT 8 x 100
46	*	1	BOLT 8 x 85
47	*	1	BOLT 8 x 65
48	1707896SM	1	WASHER 8
49	*	1	CONNECTING BLOCK
53	*	1	BUSH 12 x 15 x 11.5
54	*	1	BEARING 6906 C3
56	*	1	BEARING 6908 C3
57	*	1	BOLT 10 x 30
71	*	1	PIN 10 x 18
72	1726291SM	1	BOLT 8 x 90
73	*	1	MOTOR SHAFT 10CC

Footnotes

Note* See your local authorized Tuff Torq dealership for parts and warranty or visit TuffTorqServices.com.

The above parts group applies to the following Mfg. Nos.:

1695415 - Conquest

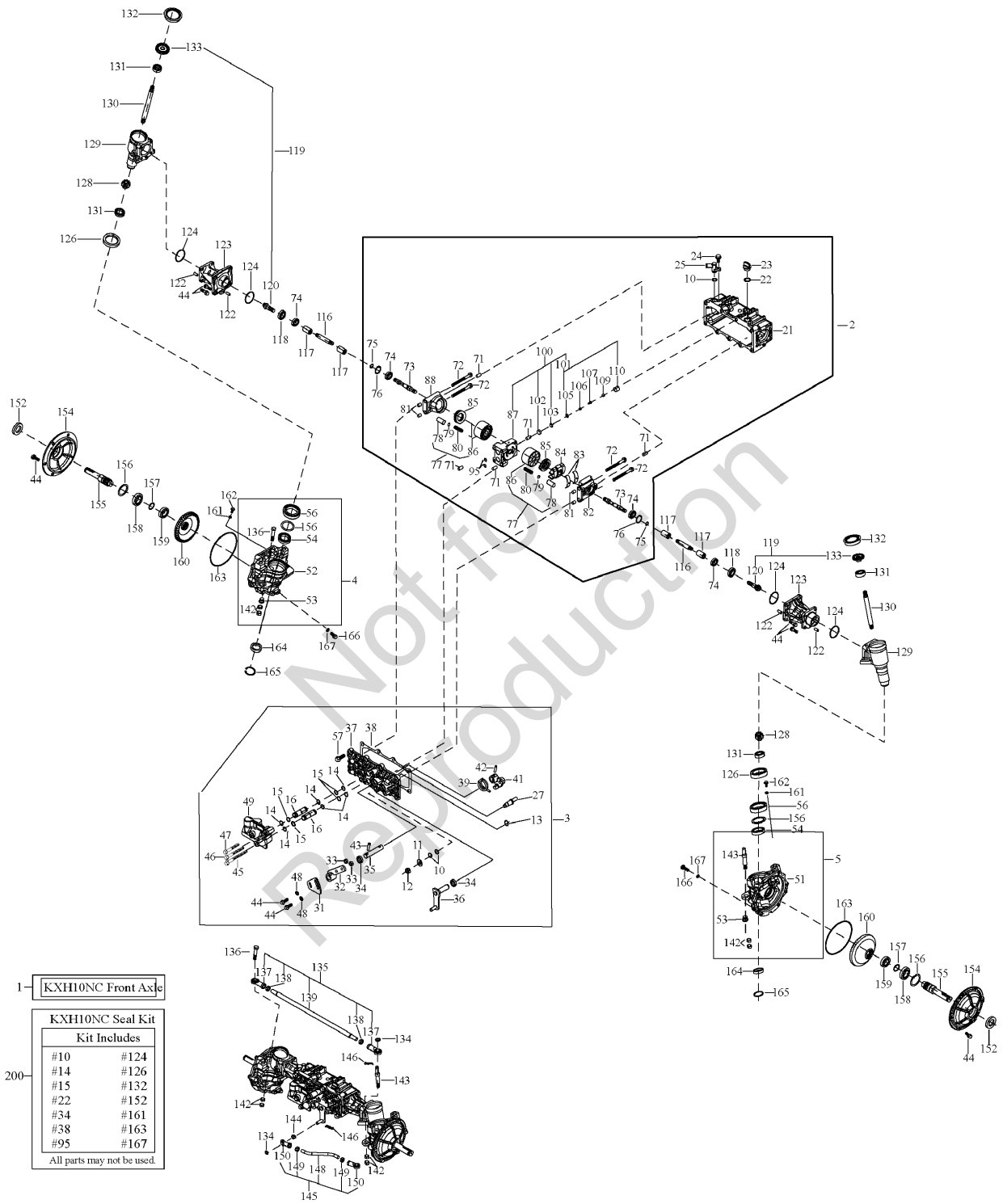
2690679 - Conquest

2690744 - Conquest

Transaxle SERVICE PARTS - Tuff Torq KXH10NC

1733480

**NOTE: Unless noted otherwise,
use the standard hardware torque
specification chart.**



The above parts group applies to the following Mfg. Nos.:

- 1695415 - Conquest
- 2690679 - Conquest
- 2690744 - Conquest

Transaxle SERVICE PARTS - Tuff Torq KXH10NC

REF NO	PART NO.	QTY.	DESCRIPTION
74	*	1	BEARING 6001 C3
75	*	1	SNAP RING 12
76	*	1	RING 28
77	1718079SM	1	CYLINDER BLOCK KIT
81	*	1	PIN 10 x 13
82	*	1	SWASH SUPPORT RIGHT
83	1718089SM	1	THRUST METAL
84	*	1	SWASH PLATE
85	1718078SM	1	THRUST BEARING 51106
88	*	1	SWASH SUPPORT LEFT
95	*	1	PACKING S 10.0
100	*	1	CENTER CASE 10CC CMP
101	*	1	CHECK VALVE CMP
102	*	1	COLLAR
103	1726116SM	1	SCREEN
116	*	1	JOINT SHAFT N
117	*	1	SPLINE COLLAR B
118	*	1	BEARING 6002 C3
119	*	1	BEVEL GEAR KIT
122	1720848SM	1	PIN 8 x 16
123	*	1	AXLE FLANGE
124	1735422SM	1	PACKING G 45.0
126	*	1	SEAL TC466411
128	*	1	FINAL PINION GEAR (9T)
129	*	1	FRONT GEAR CASE
130	*	1	SHAFT FRONT 2ND
131	1735423SM	1	BEARING 6003 C3
132	1735424SM	1	SEAL CAP 56
134	1714658SM	1	WASHER 10
135	1735425SM	1	TIE ROD COMPLETE N
136	*	1	TIE ROD PIN LEFT
142	*	1	NUT 10
143	*	1	TIE ROD PIN RIGHT
144	*	1	BUSHING 10
145	1735426SM	1	STEERING ROD COMPLETE N
146	*	1	SNAP PIN 10
152	1735427SM	1	SEAL TC254708
154	*	1	FRONT BEARING COVER
155	*	1	FRONT AXLE SHAFT
156	1735428SM	1	RING 47
157	1735429SM	1	RING 24
158	1735430SM	1	BEARING 6005 C3
159	*	1	BEARING 6004 C3
160	*	1	FINAL FEAR (51T)

Footnotes

Note* See your local authorized Tuff Torq dealership for parts and warranty or visit TuffTorqServices.com.

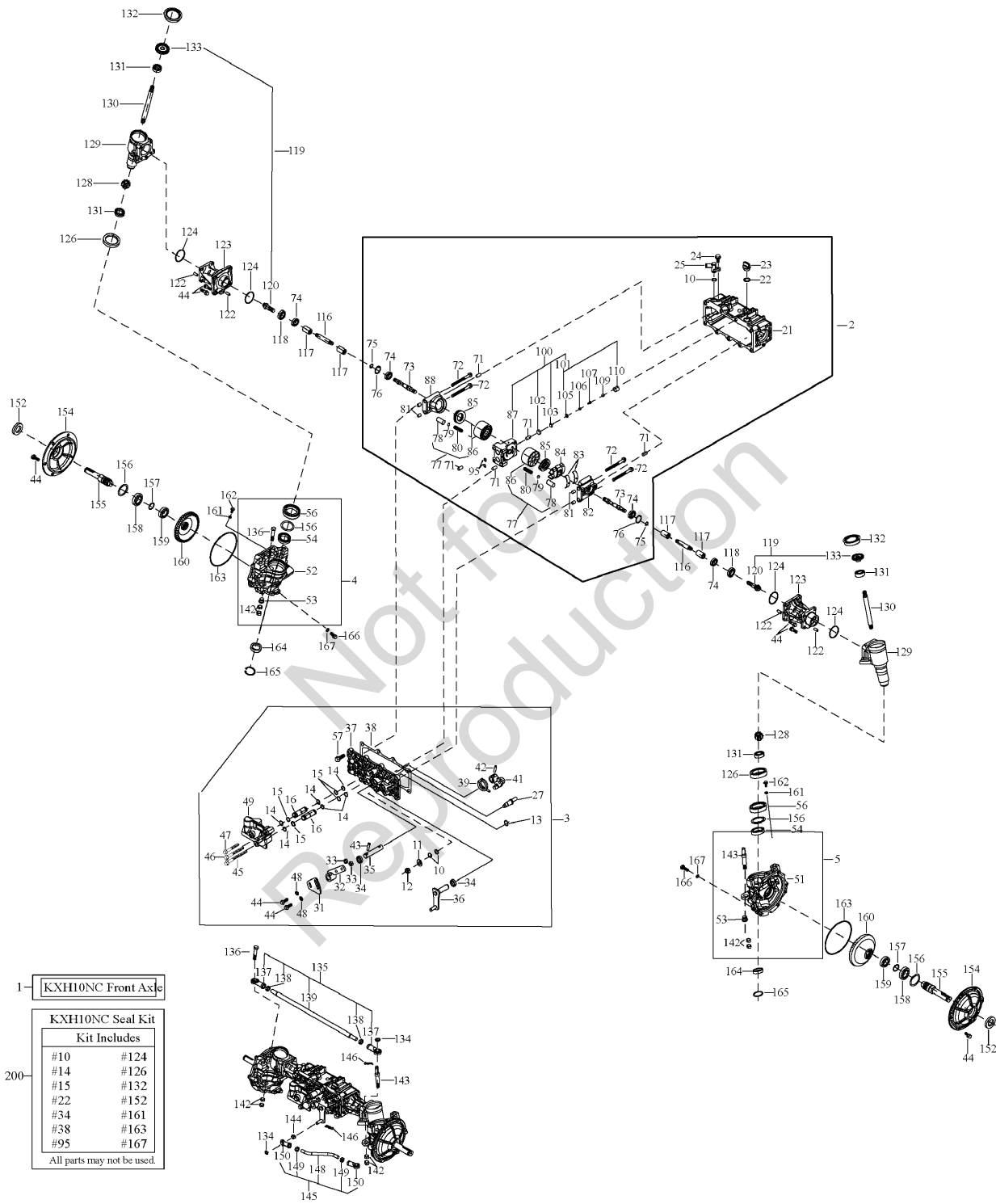
The above parts group applies to the following Mfg. Nos.:

1695415 - Conquest
2690679 - Conquest
2690744 - Conquest

Transaxle SERVICE PARTS - Tuff Torq KXH10NC

NOTE: Unless noted otherwise, use the standard hardware torque specification chart.

1733480



1- KXH10NC Front Axle

200- KXH10NC Seal Kit

Kit Includes	
#10	#124
#14	#126
#15	#132
#22	#152
#34	#161
#38	#163
#95	#167

All parts may not be used.

The above parts group applies to the following Mfg. Nos.:

- 1695415 - Conquest
- 2690679 - Conquest
- 2690744 - Conquest

Transaxle SERVICE PARTS - Tuff Torq KXH10NC

REF NO	PART NO.	QTY.	DESCRIPTION
161	*	1	WASHER SEAL 6
162	*	1	BOLT 6 x 12
163	1735431SM	1	PACKING G140.0
164	1726183SM	1	COLLAR 30*38*4
165	*	1	RING 30
166	*	1	BOLT 8 x 16
167	1724323	1	SEAL WASHER 8
200	*	1	SEAL KIT

Not for
Reproduction

Footnotes

Note* See your local authorized Tuff Torq dealership for parts and warranty or visit TuffTorqServices.com.

The above parts group applies to the following Mfg. Nos.:

1695415 - Conquest

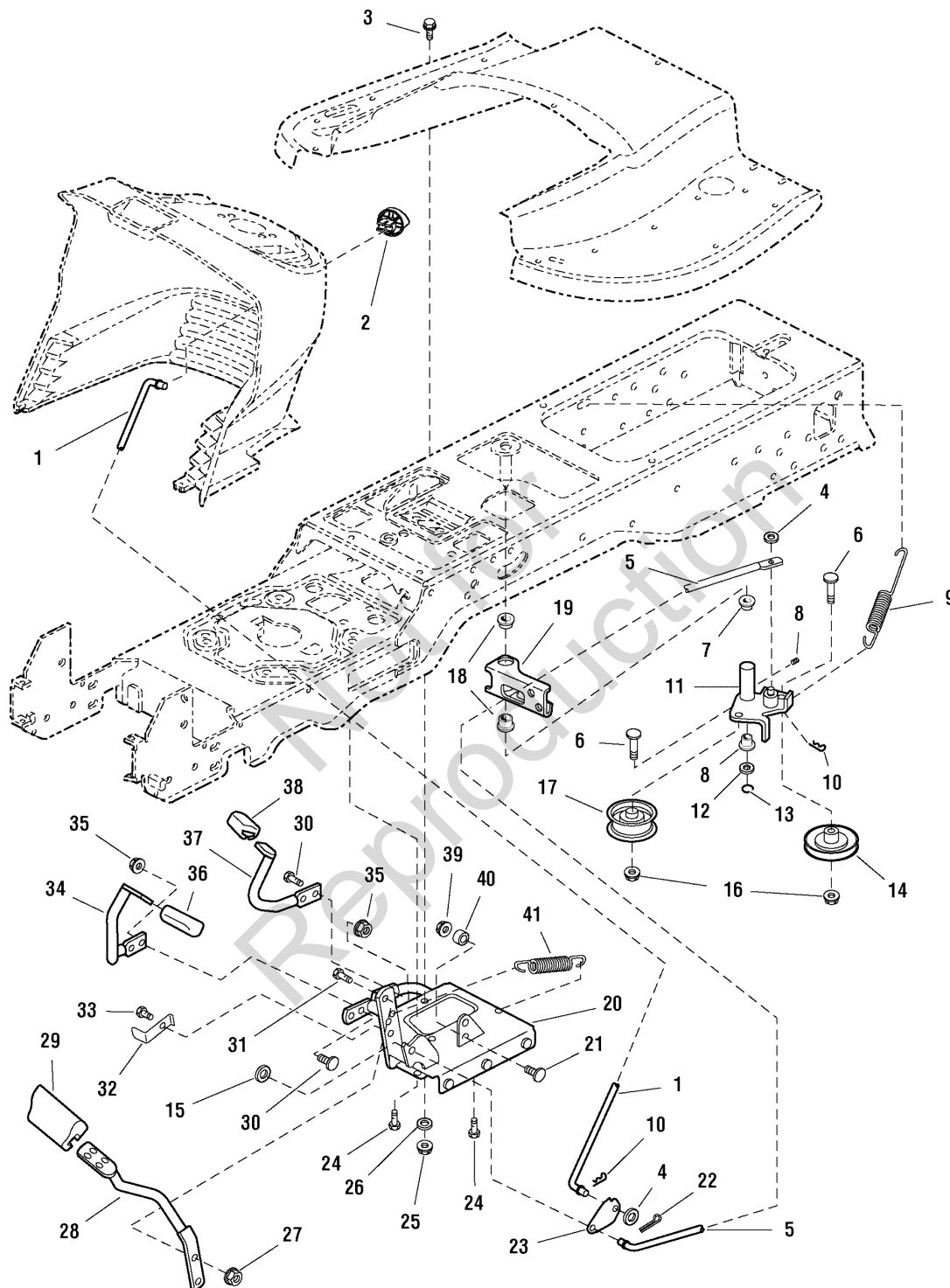
2690679 - Conquest

2690744 - Conquest

Controls Group

986599

NOTE: Unless noted otherwise,
use the standard hardware torque
specification chart.



The above parts group applies to the following Mfg. Nos.:

1695415 - Conquest

2690679 - Conquest

2690744 - Conquest

Controls Group

REF NO	PART NO.	QTY.	DESCRIPTION
1	1721353SM	1	ROD, Brake Lock
2	1721891SM	1	KNOB, Push On, Red Plastic "P"
3	1930591SM	1	CAPSCREW, Hex Flange Whiz Lock, 5/16-18 x 3/4
4	1919326SM	2	WASHER, 5/16, Black
5	1721476SM	1	ROD, Brake
6	1931353SM	2	CARRIAGE BOLT, 3/8-16 x 1 3/4
7	1663114SM	2	BUSHING, 5/8 x 3/4 x 3/4, Nylon
8	2821133SM	1	FITTING, Lube, 1/4
9	1725250SM	1	SPRING, Extension
10	1722460SM	3	PIN, Quick
11	1724917SM	1	ARM & HUB ASSEMBLY, Idler
12	1960020SM	1	WASHER, 5/8
13	1704420SM	1	RING, Clipping Extension
14	1721134SM	1	PULLEY, w/Bearing
15	1924940SM	1	WASHER, 3/8
16	1960687SM	2	NUT, Hex Flange ESNA, 3/8-16
17	1721133SM	1	PULLEY, Idler
18	1723237SM	2	BUSHING, 1 x 1-1/8 x 5/8, Nylon
19	1722513SM	1	ARM, Brake
20	1726763SM	1	PEDAL ASSEMBLY, Foot
21	1931320SM	1	CARRIAGE BOLT, 1/4-20 x 1-1/4
22	1918447SM	1	PIN, Cotter, Black
23	1721354ASM	1	LATCH, Brake
24	1664847SM	3	CAPSCREW, Hex Washer Head Taptite, 5/16-18 x 3/4
25	1919438SM	1	NUT, Hex Lock ESNA Light, 5/16-18
26	1919381SM	1	WASHER, 5/16, Black
27	1927557SM	2	NUT, Hex Flange Whiz Lock Large, 5/16-18
28	1722535ASM	1	PEDAL, Brake
29	1721577SM	1	PAD, Brake Pedal
30	1931334SM	4	CARRIAGE BOLT, 5/16-18 x 7/8
31	1921333SM	2	CAPSCREW, 5/16-18 x 1
32	1722083ASM	1	ACTUATOR, Switch 2.53" Long
33	1923683SM	1	CAPSCREW, Hex Washer Head Taptite, 3/8-16 x 3/4
34	1722070ASM	1	PEDAL, Forward
35	1960636SM	4	NUT, Hex KEPS, 5/16-18
36	1721675SM	1	PAD, Foot Pedal Forward
37	1722071ASM	1	PEDAL, Reverse
38	1721674SM	1	PAD, Foot Pedal Reverse
39	1920397SM	1	NUT, Hex Lock ESNA Light, 1/4-20
40	1686612SM	1	CAM, Roller
41	1721995SM	1	SPRING, Extension

Footnotes

The above parts group applies to the following Mfg. Nos.:

1695415 - Conquest

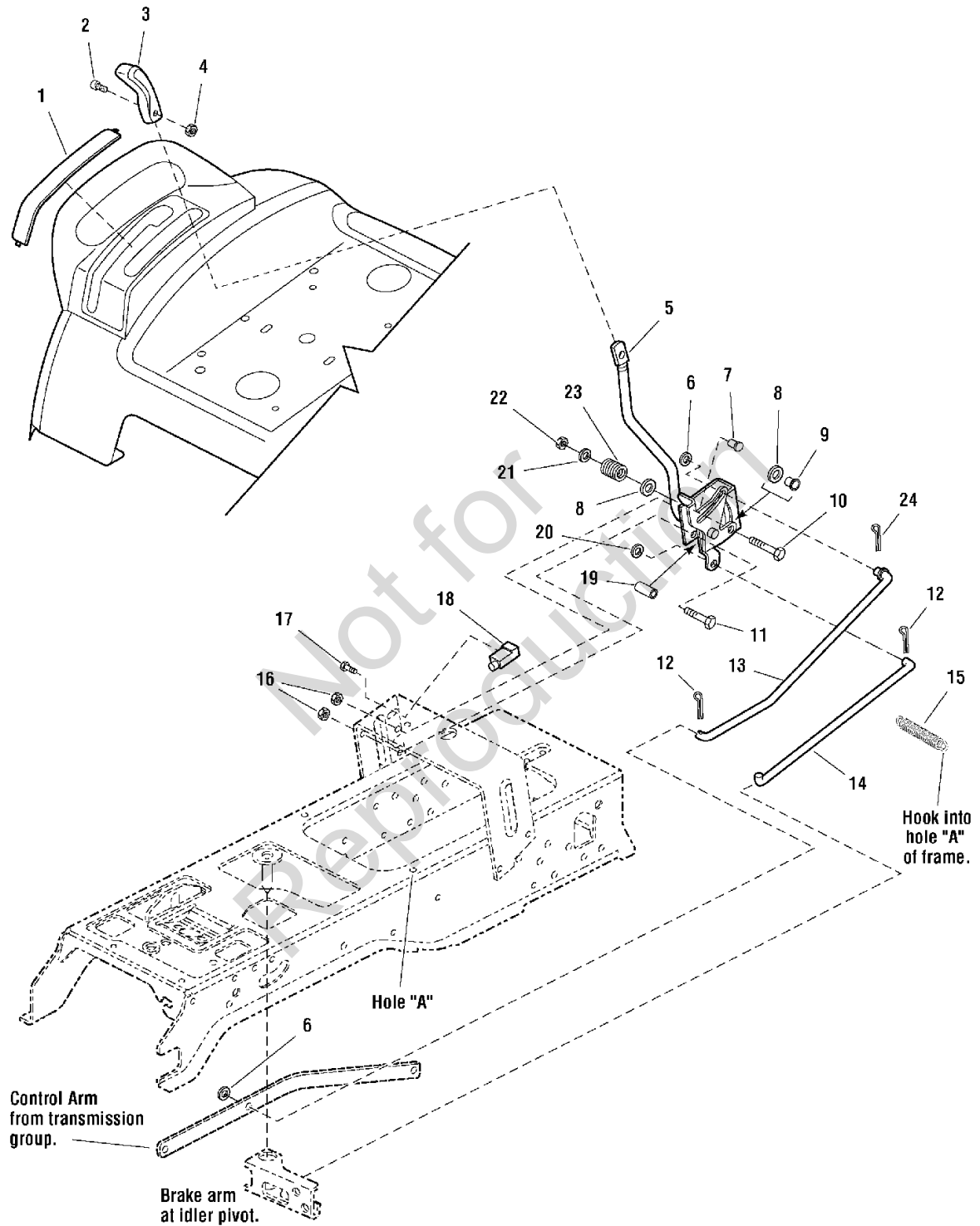
2690679 - Conquest

2690744 - Conquest

Cruise Control Group

985883

NOTE: Unless noted otherwise,
use the standard hardware torque
specification chart.



The above parts group applies to the following Mfg. Nos.:

1695415 - Conquest

2690679 - Conquest

2690744 - Conquest

Cruise Control Group

REF NO	PART NO.	QTY.	DESCRIPTION
1	1722314SM	1	COVER, w/Cruise Icon
2	1960666SM	1	SCREW, Torque Head Plus Socket Head, 1/4-20 x 7/8
3	1722303SM	1	KNOB, Cruise
4	1920397SM	1	NUT, Hex Lock ESNA Light, 1/4-20
5	1722003SM	1	LEVER & BRACKET ASSEMBLY, Cruise
6	1960103SM	2	WASHER, 3/8, Black
7	1931333SM	1	CARRIAGE BOLT, 5/16-18 x 3/4
8	1924361SM	2	WASHER, 1/2
9	1709043SM	1	SPACER, w/Flange, 11/32 x 15/32 x 3/4
10	1931342SM	1	CARRIAGE BOLT, 5/16-18 x 2-3/4
11	1960273SM	1	CARRIAGE BOLT, 5/16-18 x 2-1/4
12	1722460SM	2	PIN, Quick
13	1722117SM	1	ROD, Cruise
14	1733719SM	1	ROD, Return
15	2159106SM	1	SPRING, Cruise Return to Frame
16	1960636SM	2	NUT, Hex KEPS, 5/16-18
17	1960001SM	2	CAPSCREW, Hex Washer Head Plastite, 10-14 x 5/8
18	1717050SM	1	SWITCH, Push, Neutral Start, Gray
19	1722080SM	1	SPACER, 11/32 x 5/8 x 1-13/32
20	1919326SM	1	WASHER, 5/16, Black
21	1919381SM	1	WASHER, 5/16, Black
22	1919438SM	1	NUT, Hex Lock ESNA Light, 5/16-18
23	1677746SM	1	SPRING, Compression
24	1918447SM	1	PIN, Cotter

Footnotes

The above parts group applies to the following Mfg. Nos.:

1695415 - Conquest

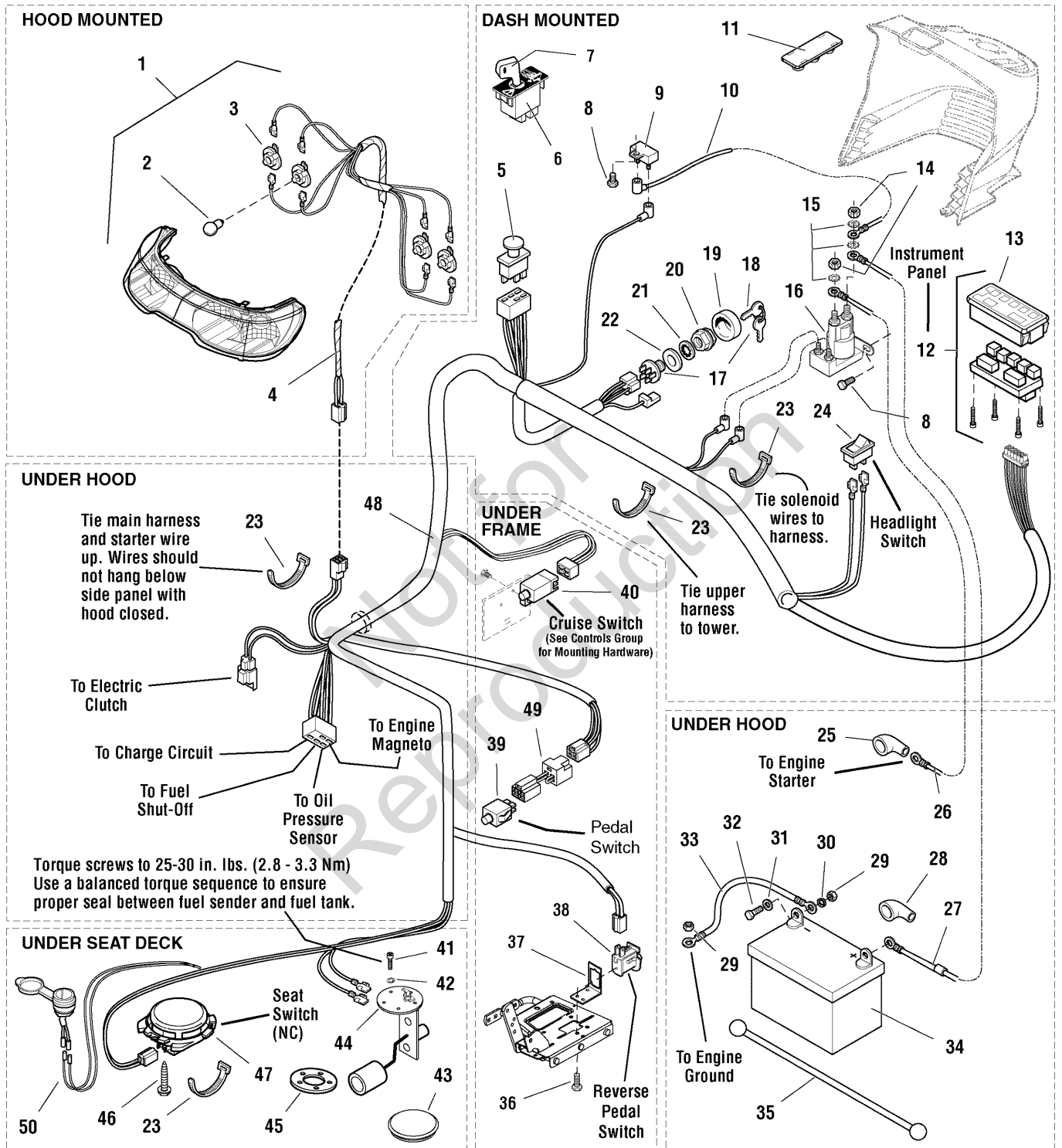
2690679 - Conquest

2690744 - Conquest

Electrical Group

986605

NOTE: Unless noted otherwise, use the standard hardware torque specification chart.



The above parts group applies to the following Mfg. Nos.:

- 1695415 - Conquest
- 2690679 - Conquest
- 2690744 - Conquest

Electrical Group

REF NO	PART NO.	QTY.	DESCRIPTION
1	1721810SM	1	HEADLIGHT ASSEMBLY, 4 Bulb (Includes Ref. Nos. 2 & 3)
2	1677371SM	4	BULB, Headlight, 12.8V
3	1723451SM	4	SOCKET ASSEMBLY, Headlight, Sealed
4	1722669SM	1	HARNESS, Headlight
5	1722887SM	1	SWITCH, PTO Push/Pull Symbols
6	1726556SM	1	MODULE, RMO (Includes Ref. No. 7)
7	1726557SM	1	KEY, RMO Module Plastic
8	1925003SM	2	CAPSCREW, Hex Washer Head Taptite, 1/4-20 x 1/2, Black
9	1665238SM	1	BREAKER, Circuit, 12 Volt 20 Amps
10	1665237SM	1	WIRE, 12GA 5-15/16 Long, Red
11	1722611SM	1	PLUG, Hole, Square
12	1725074SM	1	PANEL, Instrument w/ Fuel Gage & Hour Meter (Includes Ref. No. 13)
13	1724865SM	1	COVER, Instrument Panel
14	2820263SM	2	NUT, Hex, 5/16-24
14	2860750SM	2	NUT, KEPS Lock 5/16-24 (CE/Export) (Used only on RMO/ACS Models)
15	2820426SM	3	LOCKWASHER, External Tooth, 5/16
16	1722739SM	1	SOLENOID
16	1728963SM	1	SOLENOID (CE/Export) (Used only on RMO/ACS Models)
17	1686734SM	1	SWITCH ASSEMBLY, Ignition, 6 Pin INDAK (Includes Ref. Nos. 18, 19, 20, 21 & 22)
18	1717163SM	1	KEYS, Set of 2
19	1717550SM	1	COVER, For Ignition Switch, Plastic
20	1717549SM	1	NUT, Hex Flange, 5/8-32, Ignition Switch
21	1960547SM	1	LOCKWASHER, Internal Tooth, 5/8, Thin
22	2101025SM	1	WASHER, Shim
23	1701011SM	3	TIE, Strap, 7-5/16 Long
23	2825094SM	4	TIE, Strap, 7-5/16 Long (CE/Export) (Used only on RMO/ACS Models)
24	1716951SM	1	SWITCH, Headlights , 2 Terminal
25	1713535SM	1	BOOT, Insulator Cable Terminal, 1-15/16 Long, Red
26	1721830SM	1	CABLE, #6 x 25" Long, Ring Terminals
27	1603618SM	1	CABLE, #6 x 8" Long, Ring Terminals
28	1677296SM	1	BOOT, Insulator Battery Terminal
29	2816622SM	3	NUT, Hex, 1/4-20
30	2816964SM	2	LOCKWASHER, 1/4
31	2821319SM	2	WASHER, 1/4
32	2823341SM	2	CAPSCREW, Hex Head, 1/4-20 x 3/4
33	1713163SM	1	CABLE, #6 x 26 Long, Ring Terminal
34	1685215SM	1	BATTERY, 12 Volt
35	1722009SM	1	STRAP, Battery, 14 Long, Rubber
36	1929000SM	2	CAPSCREW, Hex Head Taptite, 1/4-20 x 3/8
37	1726810ASM	1	BRACKET, Switch Mount
38	1732004SM	1	SWITCH, Reverse Pedal
38	1704379SM	1	SWITCH, Reverse Pedal (CE/Export) (Used only on RMO/ACS Models)
39	1732006SM	1	SWITCH, Push Button, Foot Pedal

Footnotes

The above parts group applies to the following Mfg. Nos.:

1695415 - Conquest

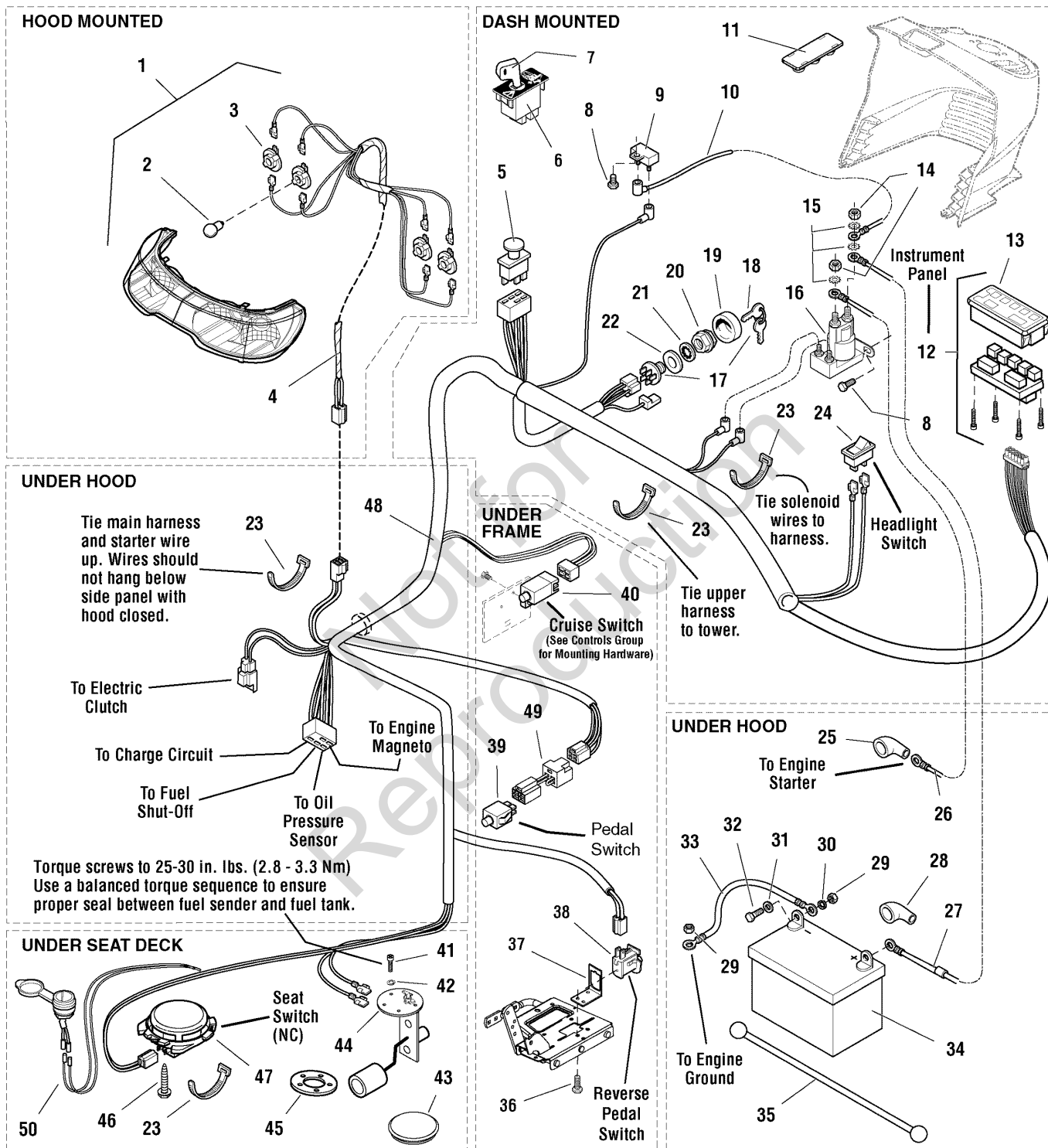
2690679 - Conquest

2690744 - Conquest

Electrical Group

986605

NOTE: Unless noted otherwise, use the standard hardware torque specification chart.



The above parts group applies to the following Mfg. Nos.:

- 1695415 - Conquest
- 2690679 - Conquest
- 2690744 - Conquest

Electrical Group

REF NO	PART NO.	QTY.	DESCRIPTION
40	1717050SM	1	SWITCH, Cruise Control, Grey, NO (Used on all models except CE/Export)
41	2860665SM	5	SCREW, Pan Head Torx, #10-32 x 1/2
42	1917365SM	5	LOCKWASHER, 3/16 #10
43	1722309SM	1	PLUG, Hole 3", Round
44	1686921SM	1	SENDER, Fuel Tank (Includes Ref. 45)
45	1685303SM	1	GASKET
46	1960536SM	2	CAPSCREW, Hex Washer Head Plastite, 1/4 x 1/2
47	1716368SM	1	SWITCH, Seat, Grey, NC
47	1718981SM	1	SWITCH, Seat, Grey, NC (CE/Export) (Used only on RMO/ACS Models)
48	1730192SM	1	HARNESS, Wiring
48	1733220SM	1	HARNESS, Wiring (CE/Export) (Used only on RMO/ACS Models)
49	1734025SM	1	WIRING ASSEMBLY, All Conditions Shutdown (CE/Export) (Used only on RMO/ACS Models)
50	1725302SM	1	12-VOLT OUTLET (CE/Export) (Used only on RMO/ACS Models)

Not for
Reproduction

Footnotes

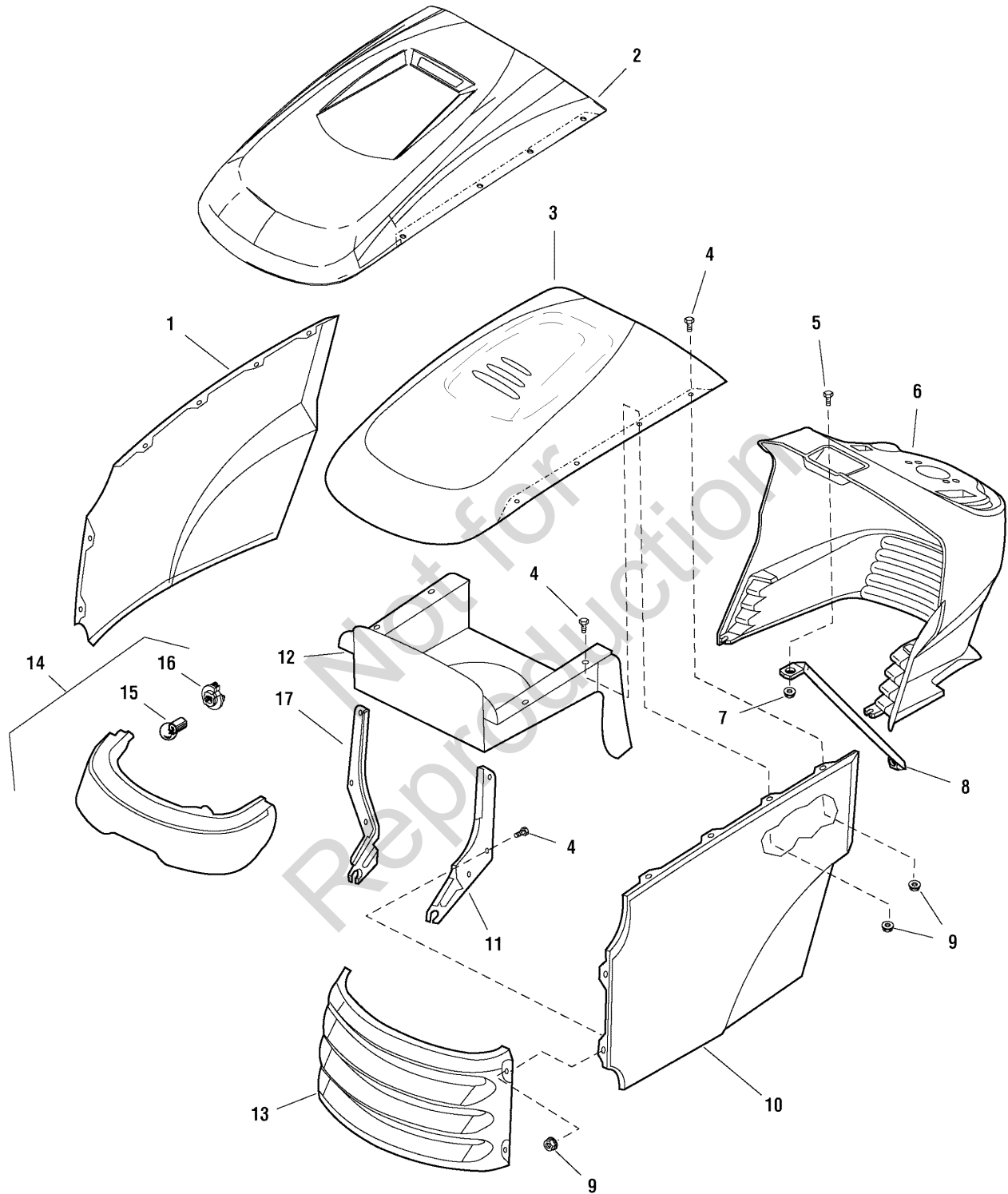
The above parts group applies to the following Mfg. Nos.:

1695415 - Conquest
2690679 - Conquest
2690744 - Conquest

Hood, Grille & Dash Group

986608

NOTE: Unless noted otherwise,
use the standard hardware torque
specification chart.



The above parts group applies to the following Mfg. Nos.:

1695415 - Conquest

2690679 - Conquest

2690744 - Conquest

Hood, Grille & Dash Group

REF NO	PART NO.	QTY.	DESCRIPTION
1	1721804CSM	1	PANEL, RH Side
1	1721804DSM	1	PANEL, RH Side, Red
2	1728031DSM	1	HOOD, with Scoop, Red
3	1722110CSM	1	HOOD, with Louvers
4	1960295SM	12	CAPSCREW, Hex Head Flange Lock, 1/4-20 x 5/8
5	1960392SM	1	SCREW, Phillips Head, #10-24 x 1/2
6	1687054SM	1	DASHBOARD, RMO, Black
6	1687055SM	1	DASHBOARD, RMO with Hydra Lift Slot, Black
7	1933896SM	1	NUT, Hex Nylock, #10-24
8	1723123SM	1	ROD, Dash Support
9	1930641SM	12	NUT, Hex Flange Lock, 1/4-20
10	1721803CSM	1	PANEL, LH Side
10	1721803DSM	1	PANEL, LH Side, Red
11	1721808ASM	1	HINGE, LH
12	1733457ASM	1	DUCT, Air Inlet
13	1721802CSM	1	GRILLE
13	1721802DSM	1	GRILLE, Red
14	1721810SM	1	HEADLIGHT ASSEMBLY (Includes Ref. Nos. 15 & 16)
15	1677371SM	4	BULB, Headlight
16	1723451SM	4	SOCKET, Headlight
17	1721809ASM	1	HINGE, RH

Not for
Reproduction

Footnotes

The above parts group applies to the following Mfg. Nos.:

1695415 - Conquest

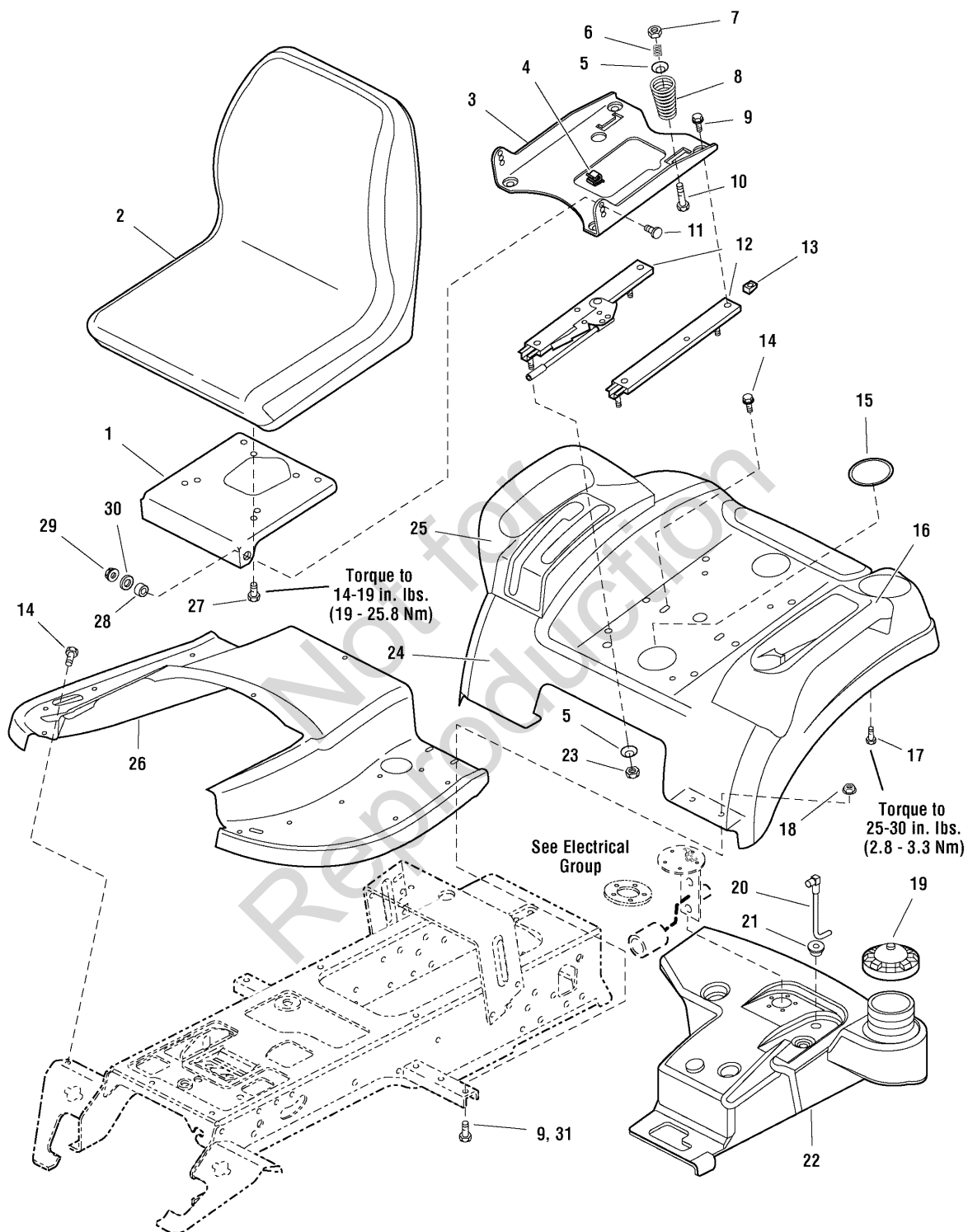
2690679 - Conquest

2690744 - Conquest

Seat & Seat Deck Group

985909

NOTE: Unless noted otherwise,
use the standard hardware torque
specification chart.



The above parts group applies to the following Mfg. Nos.:

- 1695415 - Conquest
- 2690679 - Conquest
- 2690744 - Conquest

Seat & Seat Deck Group

REF NO	PART NO.	QTY.	DESCRIPTION
1	1722129ASM	1	BRACKET, 1-5/8 x 1-3/4
2	1687199SM	1	SEAT, 18" Back
3	1722128ASM	1	SUPPORT, Seat
4	2172434SM	1	CLIP, Wire
5	1709256SM	2	WASHER, Spring, 5/16 x 1-1/4
6	1714263SM	2	SPRING, Compression
7	1919438SM	10	NUT, Hex Lock, ESNA Light, 5/16-18
8	1717051SM	2	SPRING, Compression
9	1930591SM	8	CAPSCREW, Hex Flange Whiz Lock, 5/16-18 x 3/4
10	1931339SM	2	CARRIAGE BOLT, 5/16-18 x 2
11	1931350SM	2	CARRIAGE BOLT, 3/8-16 x 1
12	1722356SM	1	SLIDE, Seat
13	1935255SM	4	NUT, Speed, 5/16-18, Lug Type
14	1930601SM	4	CAPSCREW, Hex Washer Head Taptite, 5/16-18 x 5/8
15	1722309SM	2	PLUG, Plastic
16	1729711SM	1	POD, with Cup Holder, LH
17	2860664SM	8	CAPSCREW, Hex Washer Head, 1/4-20 x 5/8
18	1931277SM	4	NUT, Hex Flange Whiz Lock, 5/16-18
19	1715917SM	1	CAP, Gas
20	1722340SM	1	TUBE & ELBOW ASSEMBLY
21	1654930SM	1	BUSHING, 3/8 x 9/16 x 5/8, Rubber
22	1722432SM	1	TANK, Fuel
23	1960636SM	8	NUT, Hex KEPS, 5/16-18
24	1722106CSM	1	DECK, Seat, Orange
24	1722106DSM	1	DECK, Seat, Red
25	1722108SM	1	POD, RH with 2 Slots
26	1722105CSM	1	TUNNEL, Orange
26	1722105DSM	1	TUNNEL, Red
27	1960667SM	4	SCREW, Hex Flange Whiz Lock, 5/16-18 x 1
28	1663752SM	2	SPACER, 25/64 x 5/8 x 3/16, Hardened
29	1930645SM	2	NUT, Hex Flange Two-Way Lock, 3/8-16
30	1924940SM	2	WASHER, 3/8
31	1930595SM	4	SCREW, Taptite 5/16-18 x 1-1/4

Footnotes

The above parts group applies to the following Mfg. Nos.:

1695415 - Conquest

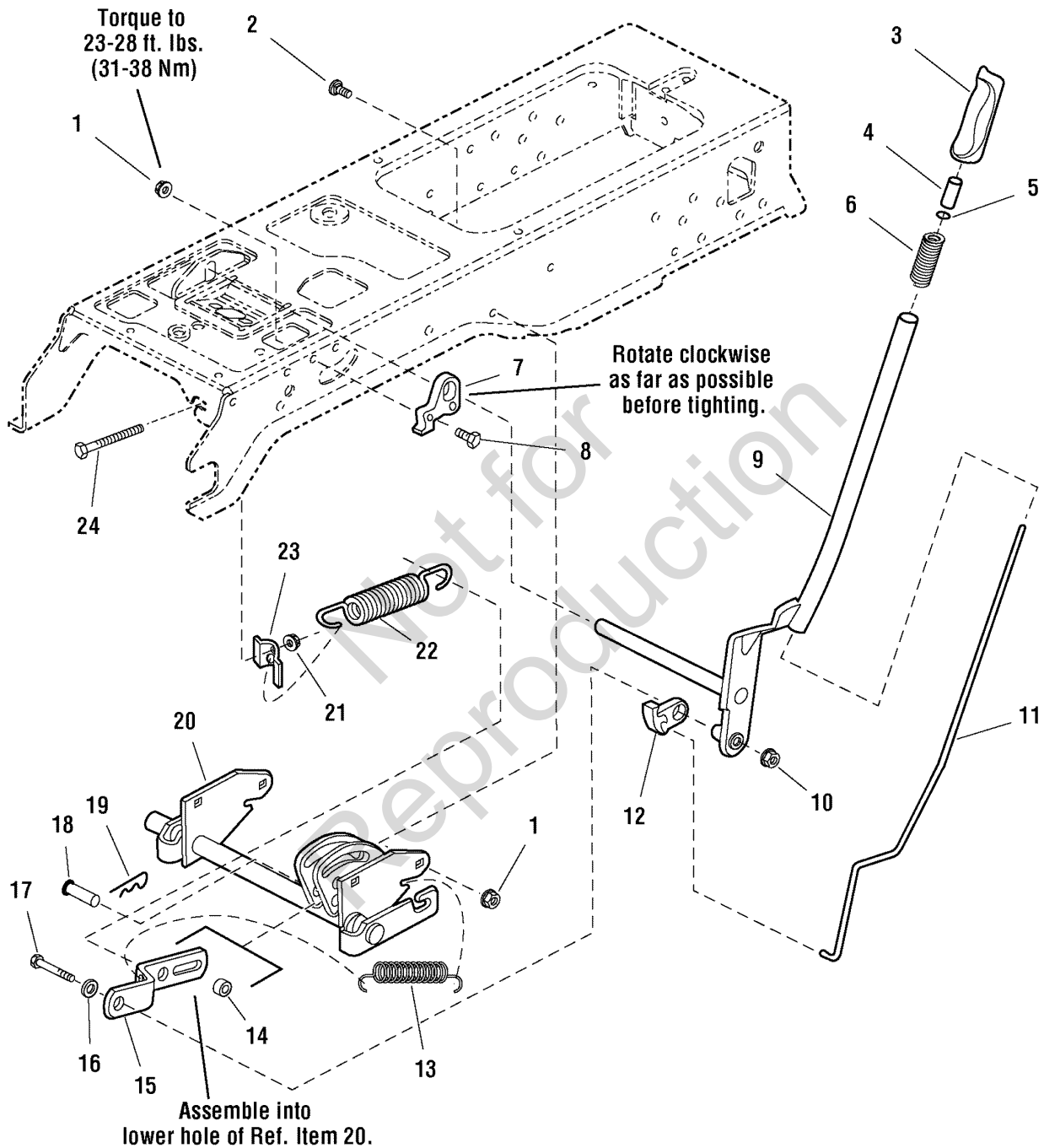
2690679 - Conquest

2690744 - Conquest

Lift Group - Manual Lift

985894

NOTE: Unless noted otherwise,
use the standard hardware torque
specification chart.



The above parts group applies to the following Mfg. Nos.:

1695415 - Conquest

2690679 - Conquest

2690744 - Conquest

Lift Group - Manual Lift

REF NO	PART NO.	QTY.	DESCRIPTION
1	1927557SM	2	NUT, Hex Whiz Lock Flange, 5/16-18, Large, Black
2	1931333SM	4	CARRIAGE BOLT, 5/16-18 x 3/4
3	1722291SM	1	GRIP, Lift Lever
4	1723124SM	1	BUTTON, Red Nylon, for 1/4 Rod
5	1960674SM	1	NUT, Push
6	1723321SM	1	SPRING, Compression, Lift Lever
7	1721581SM	1	QUADRANT, Lift, Powdered Metal
8	1926149SM	2	CAPSCREW, Hex Head, 5/16-18 x 1, G8, Black
9	1721712ASM	1	LEVER ASSEMBLY, Lift
10	1960636SM	5	NUT, Hex KEPS, 5/16-18
11	1722482SM	1	ROD, Latch
12	1722112SM	1	LOCK, Lift, Powdered Metal
13	2156302SM	1	SPRING, Extension
14	1723163SM	1	SPACER, 1/2 x 3/4 x 23/32
15	1723795ASM	1	BAR, Lift, 9-7/8 Long
16	1919381SM	1	WASHER, 5/16, Black
17	1921160SM	1	CAPSCREW, Hex Head, 5/16-18 x 2-1/4
18	1722819SM	1	PIN, Flat Head Drilled, 1/2 x 2-1/8 Long
19	1960033SM	1	CLIP, Hair Pin, 2-9/16 Long
20	1727436ASM	1	SHAFT ASSEMBLY, Lift
21	1935255SM	1	NUT, Speed, 5/16-18, Lug
22	1675232SM	1	SPRING, Compression
23	1723499SM	1	RETAINER, Spring Flat
24	1722357SM	1	CAPSCREW, Hex Washer Head, 5/16-18 x 4-1/2

Footnotes

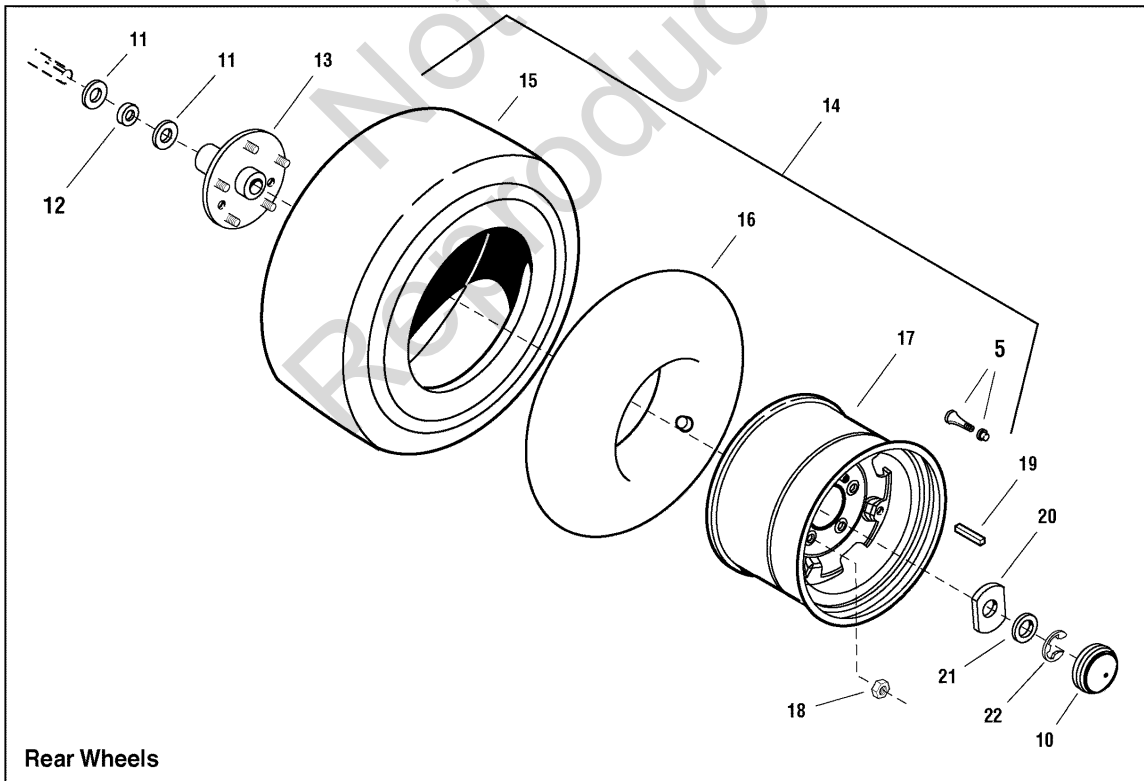
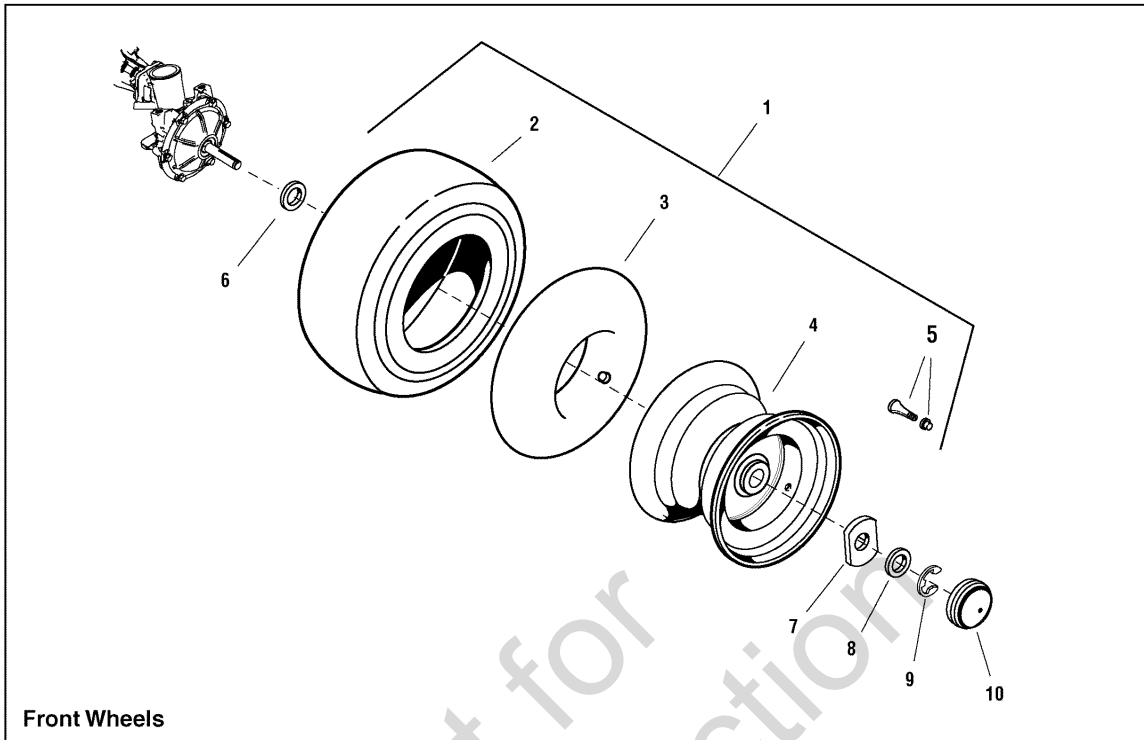
The above parts group applies to the following Mfg. Nos.:

1695415 - Conquest
2690679 - Conquest
2690744 - Conquest

Wheels & Tires Group

W987669

NOTE: Unless noted otherwise,
use the standard hardware torque
specification chart.



The above parts group applies to the following Mfg. Nos.:

1695415 - Conquest

2690679 - Conquest

2690744 - Conquest

Wheels & Tires Group

REF NO	PART NO.	QTY.	DESCRIPTION
1	1735010SM	2	WHEEL & TIRE ASSEMBLY (Includes Ref. Nos. 2, 3, 4 & 5)
2	1735706SM	2	TIRE, 16 x 6-1/2-8
3	2153038SM	2	TUBE, Tire
4	1733237SM	2	WHEEL ASSEMBLY
5	2172353SM	4	VALVE STEM & CAP
6	2860202SM	2	WASHER, Flat 3/4 x 1-5/8 x 1/8
7	1722717ASM	2	WASHER, Flat
8	1960114SM	2	WASHER, 3/4
9	2827794SM	2	RING
10	1722676SM	4	CAP, Hub
11	1960701SM	4	WASHER, 1 x 2-1/4 x 1/8
12	1726089SM	2	SPACER
13	1721400SM	2	PLATE & HUB WELDMENT
14	1735011SM	2	WHEEL & TIRE ASSEMBLY (Includes Ref. Nos. 5, 15, 16 & 17)
15	1735705SM	2	TIRE, 23 x 10-1/2-12
16	2157638SM	2	TUBE, Tire
17	1722831SM	2	WHEEL
18	2177725SM	10	NUT, Hex 7/16-20 For Wheel Bolt
19	2105337SM	2	KEY, Hi-Pro 1/4 x 2
20	1722726ASM	2	WASHER, Flat
21	1919394SM	2	WASHER, Flat
22	2834712SM	2	RING

Not for
Reproduction

Footnotes

The above parts group applies to the following Mfg. Nos.:

1695415 - Conquest

2690679 - Conquest

2690744 - Conquest

Decals Group

D987669

NOTE: Unless noted otherwise, use the standard hardware torque specification chart.

DANGER	
Amputation hazard • Rotating blades cut off arms and legs. • Stop the mower when children or others are near. • Do not carry riders (especially children) even with the blades off. They may fall off or refuse for another rider when you are not attaching or backing. • Look down and behind before and while backing.	Roll-over hazard • Operating on slopes can cause loss of control and tip-overs. • 4WD improves access to dangerously sloped terrain, increasing the possibility of rollover. • Never operate on slopes greater than 10°. • If machine slips while going uphill, stop the blades and back down slowly. • Avoid sudden turns. Go up and down slopes just ahead.
Fire hazard • Gasoline is flammable. Yard debris is combustible. • Allow engine to cool for at least 3 minutes before refueling. • Keep out of cleaned of debris.	Carbon monoxide hazard • The engine emits poisonous carbon monoxide gas. • Avoid emitting exhaust fumes. • Only operate outdoors.
WARNING: Avoid serious injury or death	
• Know the location and function of all controls. • Keep safety devices (guards, shields, switches, etc.) in place and working at all times.	• Remove debris that could be thrown by the blades (playing fields or feet near blades). • Do not use blades and engine are stopped before starting.
Read the operator's manual before using this product.	

DANGER

ROTATING CUTTING BLADE
Do not operate mower without deflector or entire grass catcher in place.

DANGER

ROTATING CUTTING BLADE
Do not put hands or feet under mower deck while blade is rotating.

50" mower decks

The above parts group applies to the following Mfg. Nos.:

- 1695415 - Conquest
- 2690679 - Conquest
- 2690744 - Conquest

Decals Group

REF NO	PART NO.	QTY.	DESCRIPTION
1	1722551SM	3	DECAL, Simplicity Silver & Blue w/Icon
2	1722820SM	1	DECAL, Conquest, Silver & Blue
3	1722781SM	1	DECAL, 23HP Silver on Clear
4	1722773SM	1	DECAL, Hood Stripe R.H. SMI Blue & Silver
4	1722774SM	1	DECAL, Hood Stripe L.H. SMI Blue & Silver
5	1722806SM	1	DECAL, Ignition Switch Symbols
6	1734026SM	1	DECAL, Tunnel Cover Danger Slopes, Blades
6	1734027SM	1	DECAL, Tunnel Cover Danger Slopes, Blades (CE/Export)
7	1734142SM	1	DECAL, Touch Up Paint
8	1723296SM	2	STICKER, Protection
9	*	1	DECAL, I.D. Plate
10	*	1	DECAL, Patent
11	1723160SM	1	DECAL, Transmission Release Valve
13	1704277SM	1	DECAL, Danger Do Not Operate w/o Deflector
13	1720389SM	1	DECAL, Danger Rotating Blade (CE/Export)
15	*	1	DECAL, OPEI Certified
16	1706640SM	1	DECAL, 50" Silver on Black w/Stripe
17	1704276SM	1	DECAL, Danger Do Not Put Hand/Feet In Mower
18	1721197SM	1	DECAL, 1 2 3 4 5 6, Height of Cut White/Black
19	1726373SM	2	DECAL, 4x4
20	1723143SM	1	DECAL, Lift (Used only on Domestic Models)

Footnotes

NOTE * Not a serviceable part.

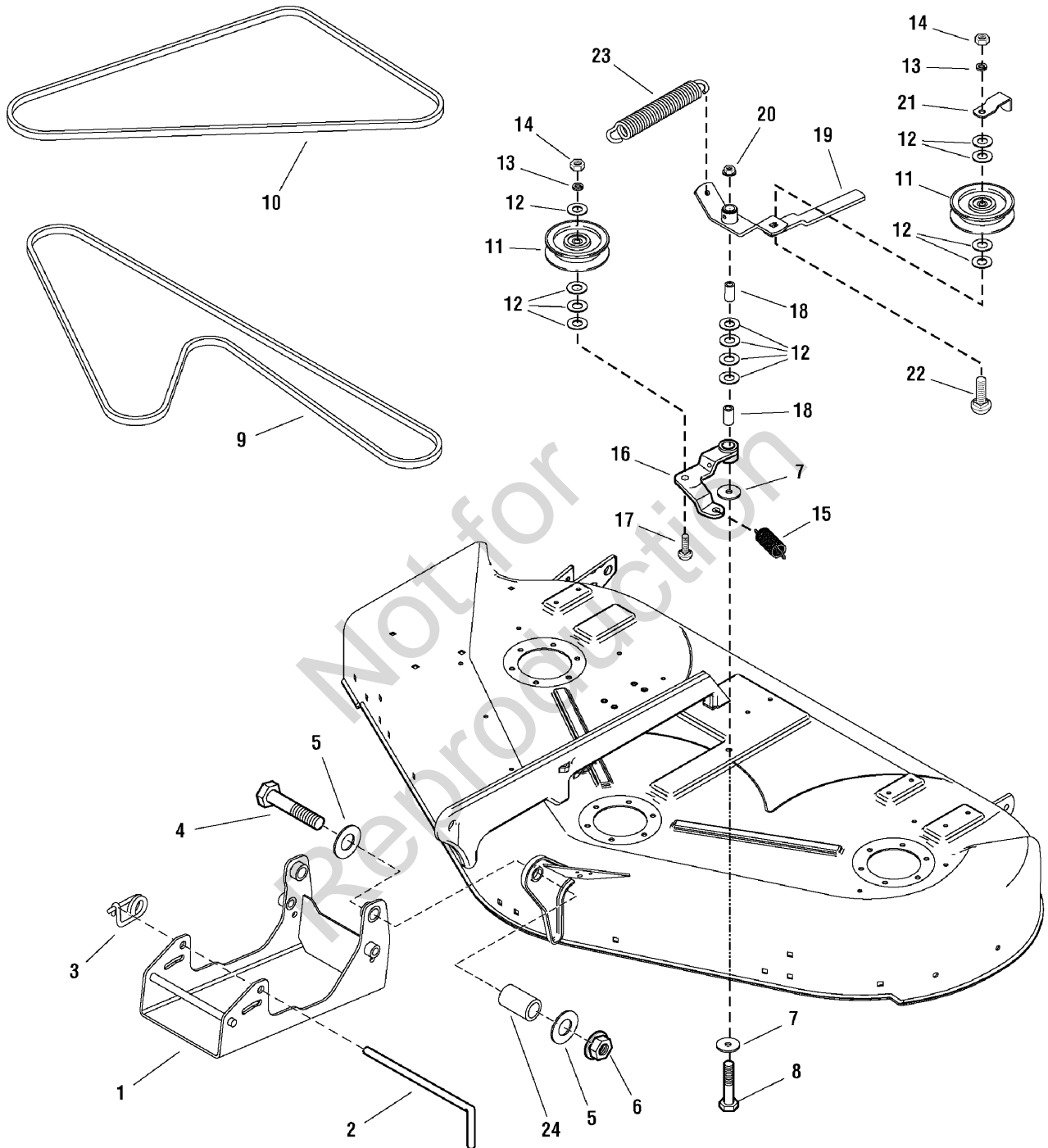
The above parts group applies to the following Mfg. Nos.:

1695415 - Conquest
2690679 - Conquest
2690744 - Conquest

44" & 50" Mower Deck - Clutch & Support Group

987599

NOTE: Unless noted otherwise,
use the standard hardware torque
specification chart.



The above parts group applies to the following Mfg. Nos.:

1695395 - 50" Mower

2690679 - Conquest

2690744 - Conquest

44" & 50" Mower Deck - Clutch & Support Group

REF NO	PART NO.	QTY.	DESCRIPTION
1	1737046ASM	1	HITCH & RODS ASSEMBLY, 4WD
2	1731414SM	1	ROD, Latch
3	2176012SM	1	SPRING PIN
4	1923701SM	1	CAPSCREW, 3/8-16 x 2
5	1922755SM	2	WASHER, 3/8
6	1960687SM	2	NUT, Hex Flange 3/8-16
7	1924356SM	2	WASHER, 3/8
8	1923938SM	1	CAPSCREW, Hex Head 3/8-15 x 3-1/2 G5
9	1703836SM	1	V-BELT, Arbor Drive (Used only on 50" Mower)
9	1721532SM	1	V-BELT, Arbor Drive (Used only on 44" Mower)
10	1734114SM	1	V-BELT, Mower Drive 70.1 (Used only on 50" Mower)
10	1734115SM	1	V-BELT, Mower Drive 62.1 (Used only on 44" Mower)
11	1724387SM	2	PULLEY, Idler
12	1924940SM	12	WASHER, 3/8
13	1916965SM	2	LOCKWASHER, Spring 3/8
14	1916950SM	2	NUT, Hex 3/8-16
15	1656936SM	1	SPRING, Extension
16	1718561SM	1	LEVER ASSEMBLY, Idler w/Bushing & Fitting
17	1931352SM	1	CARRIAGE BOLT, 3/8-16 x 1-1/2 G5
18	1674669SM	2	SPACER
19	1704658SM	1	LEVER ASSEMBLY, Idler w/Bushings & Fitting
20	1960339SM	1	NUT, Hex Flange 3/8-16 Machine Lock
21	1677135ASM	1	GUARD, Belt
22	1960315SM	1	CARRIAGE BOLT, 3/8-16 x 2 G5
23	1715435SM	1	SPRING, Extension
24	1737061SM	2	SPACER

Footnotes

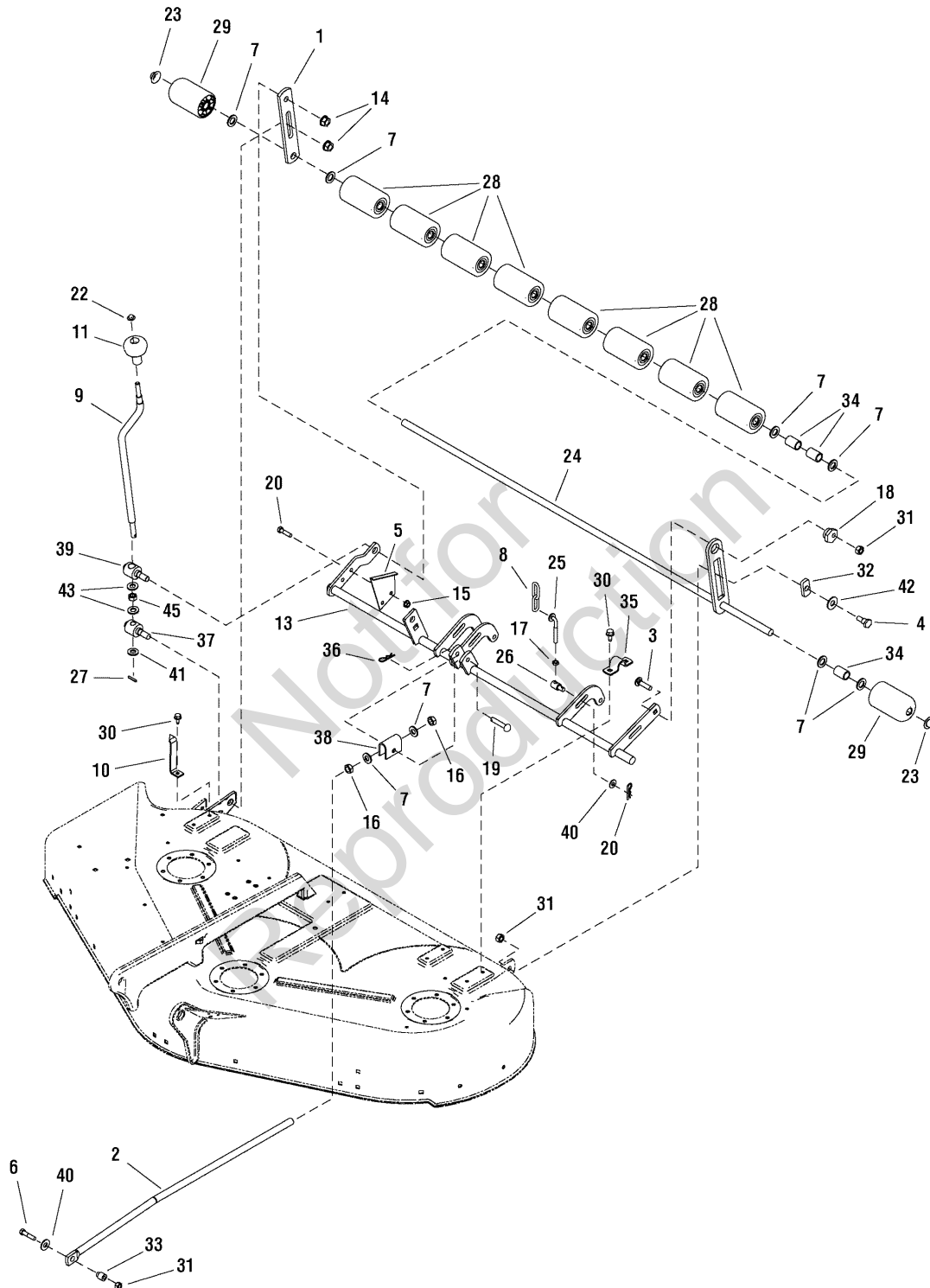
The above parts group applies to the following Mfg. Nos.:

1695395 - 50" Mower
2690679 - Conquest
2690744 - Conquest

50" Mower Deck - Height Adjustment & Roller Bar Group

987883

NOTE: Unless noted otherwise,
use the standard hardware torque
specification chart.



The above parts group applies to the following Mfg. Nos.:

1695395 - 50" Mower

2690744 - Conquest

50" Mower Deck - Height Adjustment & Roller Bar Group

REF NO	PART NO.	QTY.	DESCRIPTION
1	1704074ASM	1	BAR, Roller 5/16
2	1722995SM	1	ROD, Adjusting
3	1931352SM	1	CARRIAGE BOLT, 3/8-16 x 1-1/2 G5
4	2172622SM	1	BOLT, Shoulder, 3/8-16 G5
5	1704116ASM	1	BRACKET, Height of Cut 16GA
6	1922606SM	1	CAPSCREW, Hex Head 3/8-16 x 1-3/4 G8
7	1924366SM	8	WASHER, 5/8
8	1731383ASM	2	CHAIN, Link
9	1719901SM	1	CRANK, Height Adjusting
10	1720643ASM	1	INDICATOR, Height
11	1714084SM	1	KNOB, Spinner
13	1733522ASM	1	SHAFT ASSEMBLY, Rocker 50"
14	1930644SM	2	NUT, Hex Flange 1/2-13 Two-Way Lock
15	1931277SM	2	NUT, Hex Flange 5/16-18 Whiz Lock Small
16	1915726SM	2	NUT, Hex 5/8-11
17	1920161SM	2	NUT, Hex Jam 5/16-18
18	1704082SM	1	NUT, Hex Adjusting
19	2118053SM	1	PIN, Round Head Drilled 3/8 x 2
20	1930591SM	2	SCREW, Hex Whiz Lock Flange 5/16-18 x 3/4
22	1960093SM	1	NUT, Push Pal 3/8 Diameter Stud Capped
23	1960520SM	2	NUT, Push for 5/8 Diameter Stud Capped
24	1716155ASM	1	SHAFT & BAR ASSEMBLY, Roller
25	1737124SM	2	ROD, Height Adjust (Short)
25	7028728SM	2	ROD, Height Adjust (Long)
26	1731382SM	2	TRUNNION
27	2816001SM	1	PIN, Spring
28	1668513SM	8	ROLLER
29	1722036SM	2	ROLLER, Rounded
30	1664847SM	6	SCREW, Hex Washer Head Taptite 5/16-18 x 3/4
31	2860681SM	3	NUT, Hex Toplock Spiral lock Flange 3/8-16
32	1677507SM	1	SLIDE
33	1706644SM	1	SPACER, 3/8 x 3/4 x 15/16
34	1709195SM	3	SPACER
35	1665374SM	3	STRAP, Roller
36	1960074SM	3	CLIP, Hair Pin
37	1733257SM	1	TRUNNION
38	1706645ASM	1	TRUNNION
39	1733258SM	1	TRUNNION
40	1924940SM	3	WASHER, 3/8
41	1704097SM	1	WASHER, Detent
42	1924361SM	1	WASHER, 1/2
43	1960170SM	1	WASHER, 1/2
45	1716953SM	1	SPACER

Footnotes

The above parts group applies to the following Mfg. Nos.:

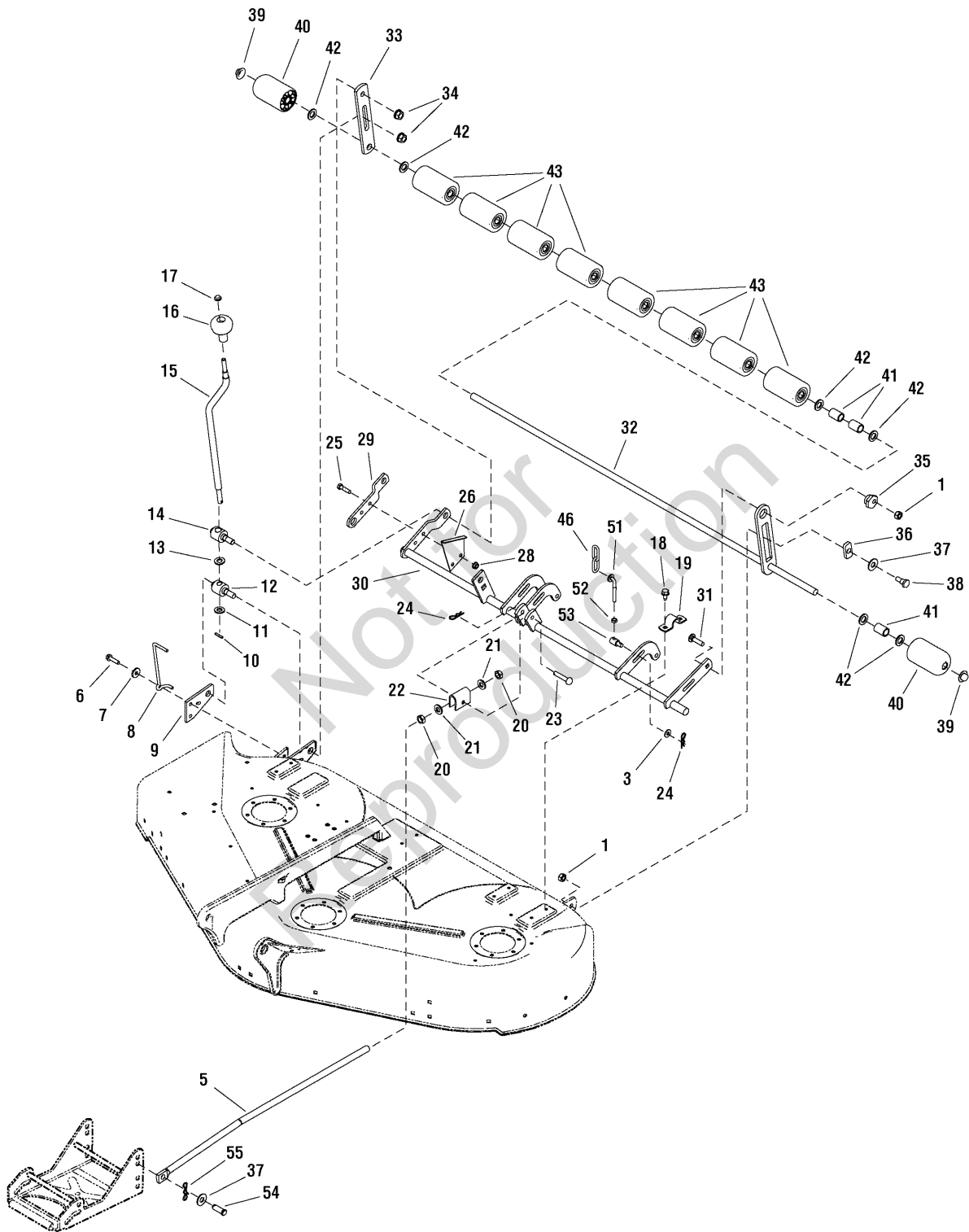
1695395 - 50" Mower

2690744 - Conquest

50" Mower Deck - Height Adjustment & Roller Bar Group

987642

NOTE: Unless noted otherwise,
use the standard hardware torque
specification chart.



The above parts group applies to the following Mfg. Nos.:
2690679 - Conquest

50" Mower Deck - Height Adjustment & Roller Bar Group

REF NO	PART NO.	QTY.	DESCRIPTION
1	2860681SM	2	NUT, Hex Toplock Spirallock Flange 3/8-16
3	1924940SM	2	WASHER, 3/8
5	1722995SM	1	ROD, Adjusting
6	1931202SM	2	SCREW, Hex Washer Head Taptite 5/16-18 x 1-1/4
7	1919381SM	1	WASHER, 5/16
8	1704114SM	1	INDICATOR, Cutting Height
9	1704080ASM	1	PLATE, Mower Support
10	2816001SM	1	PIN, Spring
11	1704097SM	1	WASHER, Detent
12	1704086SM	1	TRUNNION, 1-1/4
13	1960170SM	1	WASHER, 1/2
14	1704087SM	1	TRUNNION, 1-1/4
15	1719901SM	1	CRANK, Height Adjusting
16	1714084SM	1	KNOB, Spinner
17	1960093SM	1	NUT, Push Pal 3/8 Diameter Stud Capped
18	1664847SM	6	SCREW, Hex Washer Head Taptite 5/16-18 x 3/4
19	1665374SM	3	STRAP
20	1915726SM	2	NUT, Hex 5/8-11
21	1924366SM	2	WASHER, 5/8
22	1706645ASM	1	TRUNNION
23	2118053SM	1	PIN, Round Head Drilled 3/8 x 2
24	1960074SM	3	CLIP, Hair Pin
25	1921977SM	2	CAPSCREW, Hex Head 5/16-18 x 1-1/4 G5
26	1704116ASM	1	BRACKET, Height of Cut 16GA
28	1931277SM	2	NUT, Hex Flange 5/16-18, Whiz Lock Small
29	1704083ASM	1	ARM, Rear R.H.
30	1733522ASM	1	SHAFT ASSEMBLY, Rocker 50"
31	1931352SM	1	CARRIAGE BOLT, 3/8-16 x 1-1/2 G5
32	1716155ASM	1	SHAFT & BAR ASSEMBLY, Roller 50"
33	1704074ASM	1	BAR, Roller
34	1930644SM	2	NUT, Hex Flange 1/2-13 Two-Way Lock
35	1704082SM	1	NUT, Hex Adjusting
36	1677507SM	1	SLIDE
37	1924361SM	2	WASHER, 1/2
38	2172622SM	1	BOLT, Shoulder, 3/8-16 G5
39	1960520SM	2	NUT, Push for 5/8 Diameter Stud Capped
40	1722036SM	2	ROLLER, Rounded
41	1709195SM	3	SPACER
42	1924366SM	6	WASHER, 5/8
43	1668513SM	8	ROLLER
46	1731383ASM	2	CHAIN, Link
51	1731384SM	2	ROD, Height Adjusting
52	1920161SM	2	NUT, Hex Jam 5/16-18

Footnotes

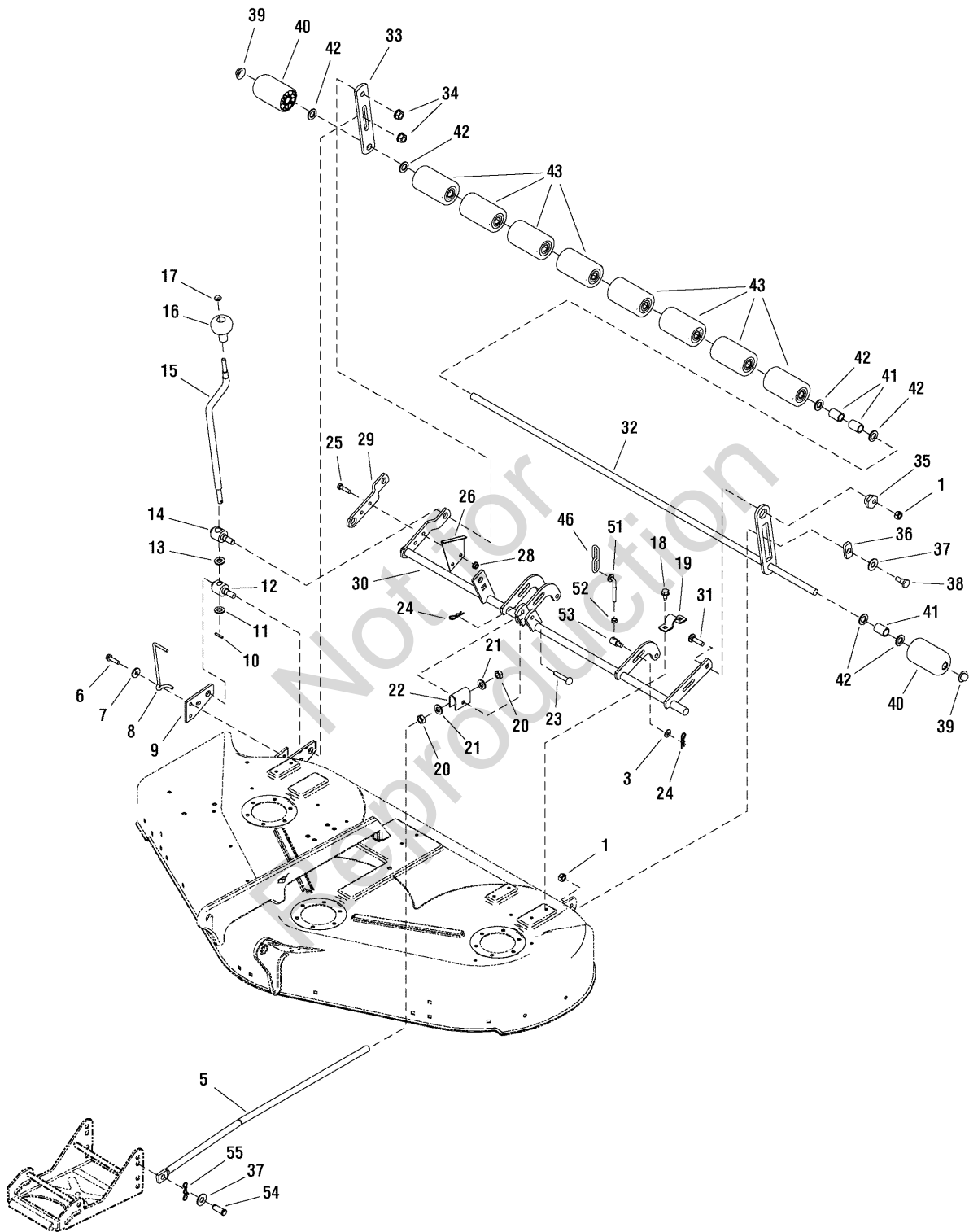
The above parts group applies to the following Mfg. Nos.:

2690679 - Conquest

50" Mower Deck - Height Adjustment & Roller Bar Group

987642

NOTE: Unless noted otherwise,
use the standard hardware torque
specification chart.



The above parts group applies to the following Mfg. Nos.:

2690679 - Conquest

50" Mower Deck - Height Adjustment & Roller Bar Group

REF NO	PART NO.	QTY.	DESCRIPTION
53	1731382SM	2	TRUNNION
54	1960116SM	1	PIN, Yoke
55	1722320SM	1	PIN, Cotter Locking

Not for
Reproduction

Footnotes

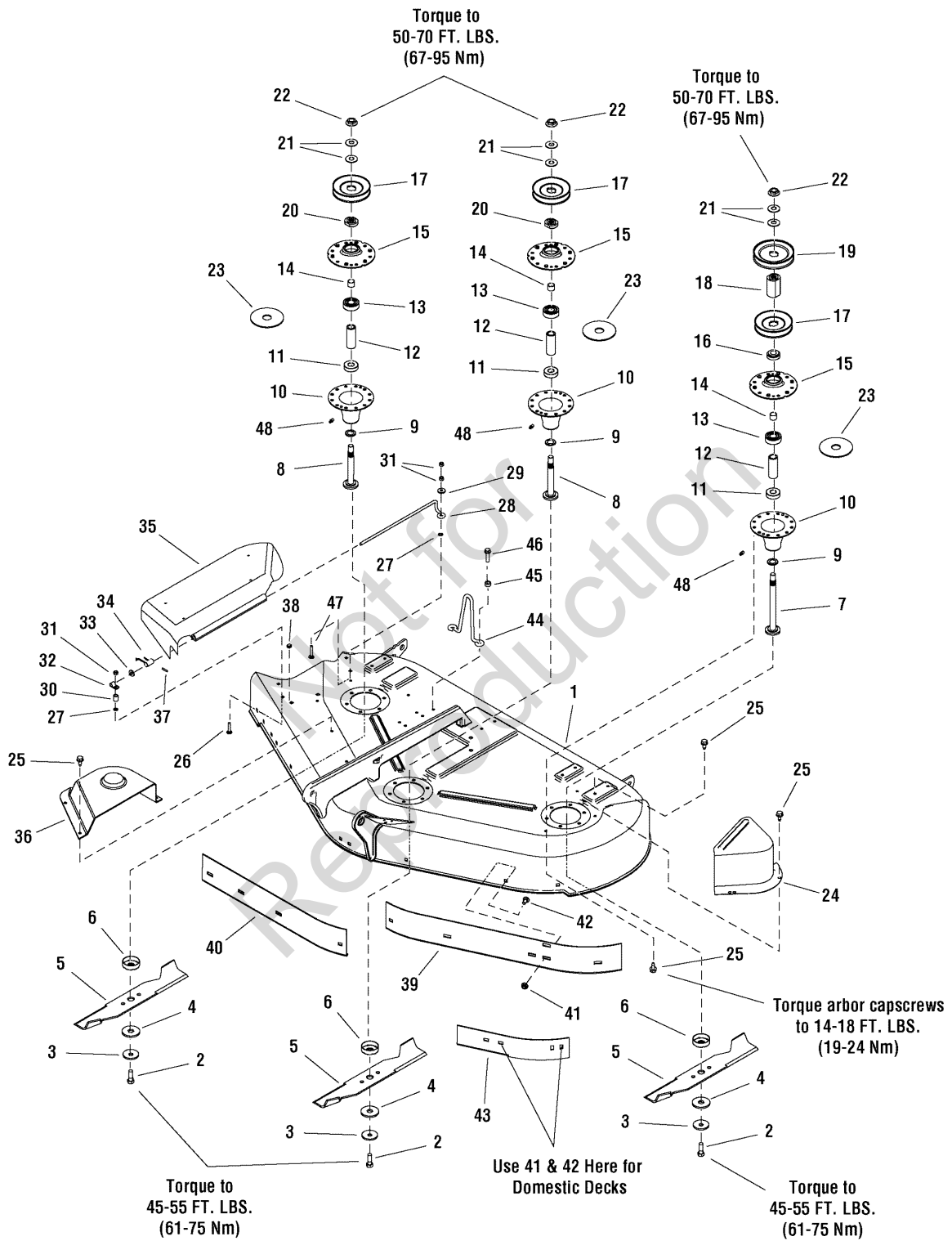
The above parts group applies to the following Mfg. Nos.:

2690679 - Conquest

50" Mower Deck - Housing, Arbors & Blades Group

987519

NOTE: Unless noted otherwise, use the standard hardware torque specification chart.



The above parts group applies to the following Mfg. Nos.:

- 1695395 - 50" Mower
- 2690744 - Conquest

50" Mower Deck - Housing, Arbors & Blades Group

REF NO	PART NO.	QTY.	DESCRIPTION
1	1687325SM	1	HOUSING ASSEMBLY, 50" (Orange)
1	1687326SM	1	HOUSING ASSEMBLY, 50" (Red)
2	2823471SM	3	CAPSCREW, Hex Head 7/16-14 x 1-1/4 G8
3	1656916SM	3	WASHER, Spring
4	1713089SM	3	WASHER, Hex, 11/16 x 2
5	1708229ASM	3	BLADE, Mower 50"
6	1713196SM	3	SHIELD, Grass Lower Arbor Heat Treat
7	1713612SM	1	SHAFT, Arbor
8	1713195SM	2	SHAFT, Arbor
9	1713619SM	3	WASHER, Cup
10	1713338ASM	3	HOUSING, Arbor Bottom w/Lube Fitting (Includes Ref. No. 48)
11	1705897SM	3	BEARING, Ball, 11/16 x 1-9/16 x 15/32
12	1732544SM	3	SPACER, Powdered Metal
13	2108202SM	3	BEARING, Ball
14	1715724SM	3	SPACER, 21/32 x 3/4 x 5/8
15	1655729ASM	3	HOUSING, Arbor Top
16	1713533SM	1	HUB, Powdered Metal
17	1713098SM	3	PULLEY
18	1713158SM	1	HUB, Serated Powdered Metal
19	1732951SM	1	PULLEY
20	1713197SM	2	HUB, Pulley, Center & R.H.
21	1713675SM	6	WASHER, Bellville
22	1714419SM	3	NUT, Hex Flange 9/16-18
23	1707335SM	3	GASKET, Foam Poly
24	1720560ASM	1	COVER, Arbor
25	1664847SM	27	SCREW, Hex Washer Head Taptite 5/16-18 x 3/4
26	1931320SM	2	CARRIAGE BOLT, 1/4-20 x 1-1/4 G5
27	1960518SM	2	NUT, Push for 1/4 Diameter Thread
28	1706709SM	1	ROD, Deflector E-Coat
29	1960353SM	1	WASHER
30	1710703SM	2	SPACER, Powdered Metal
31	1920397SM	2	NUT, Hex Lock ESNA Light 1/4-20
32	1704873SM	1	CLAMP, Wire
33	1919326SM	1	WASHER, 5/16
34	7101082SM	1	SPRING, Torsion Chute
35	1705449SM	1	DEFLECTOR
36	1715673SM	1	COVER, Arbor
37	1723323SM	1	CAP
38	1705115SM	1	PLUG, Button
39	1716870ASM	1	BAFFLE, Blowout 50" L.H. (CE/Export)
40	1735184ASM	1	BAFFLE, Blowout 50" R.H. (CE/Export)
41	1927557SM	2/11	NUT, Hex Flange 5/16-18 Whiz Lock Large
42	1931333SM	2/11	BOLT, Carriage, 5/16-18 x 3/4

Footnotes

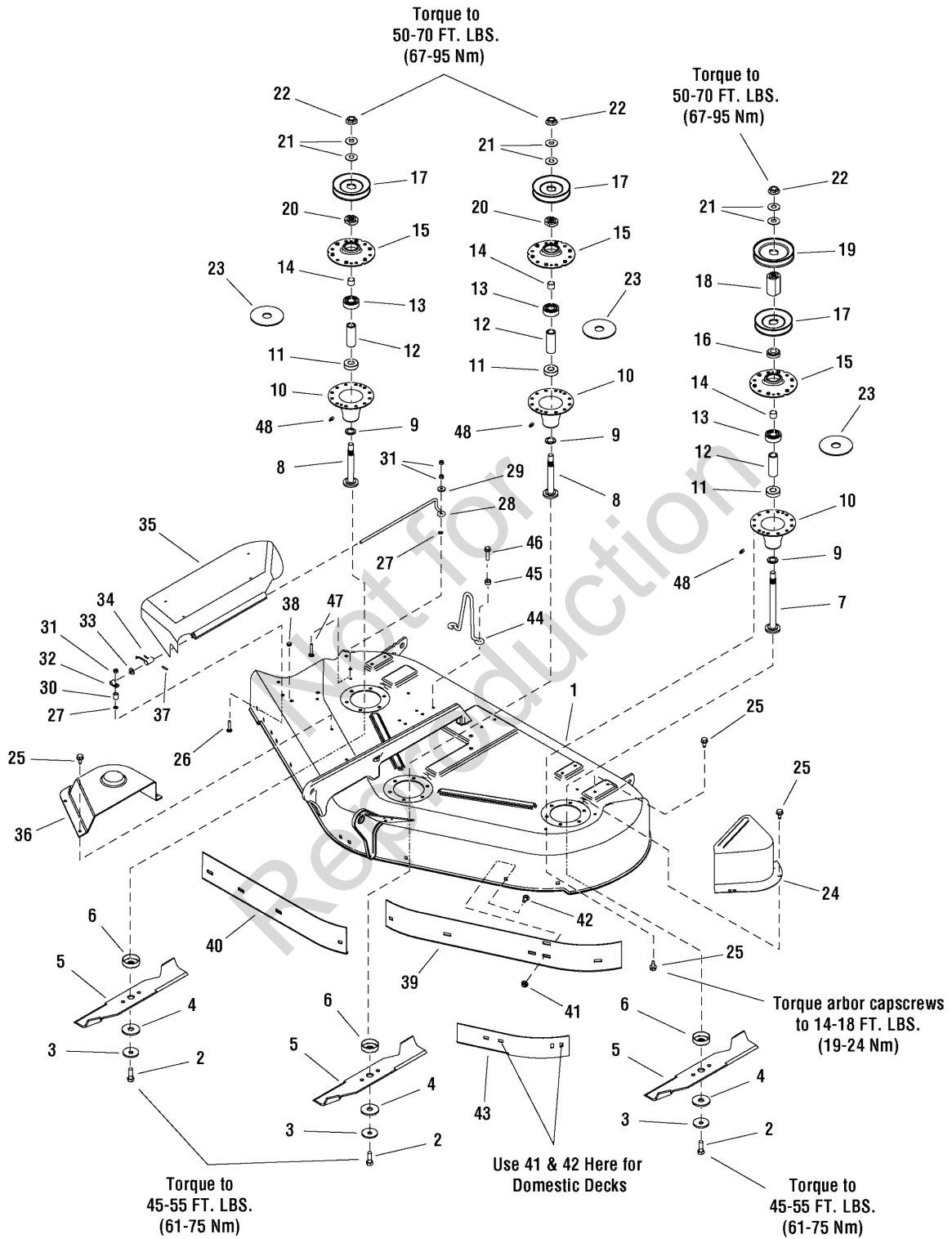
The above parts group applies to the following Mfg. Nos.:

1695395 - 50" Mower
2690744 - Conquest

50" Mower Deck - Housing, Arbors & Blades Group

987519

NOTE: Unless noted otherwise, use the standard hardware torque specification chart.



The above parts group applies to the following Mfg. Nos.:

- 1695395 - 50" Mower
- 2690744 - Conquest

50" Mower Deck - Housing, Arbors & Blades Group

REF NO	PART NO.	QTY.	DESCRIPTION
43	1724538ASM	1	BAFFLE, Blowout (Domestic)
44	1704098SM	1	UPSTOP (Only used on Broadmoor Series)
45	1611705SM	2	SPACER (Only used on Broadmoor Series)
46	1931202SM	2	SCREW, Hex Washer Taptite (Only used on Broadmoor Series)
47	1960633SM	2	CARRIAGE BOLT, 1/4-20 x 1-1/2 G5
48	1704314SM	3	FITTING, Grease, 1/4 Drive

Not for
Reproduction

Footnotes

The above parts group applies to the following Mfg. Nos.:

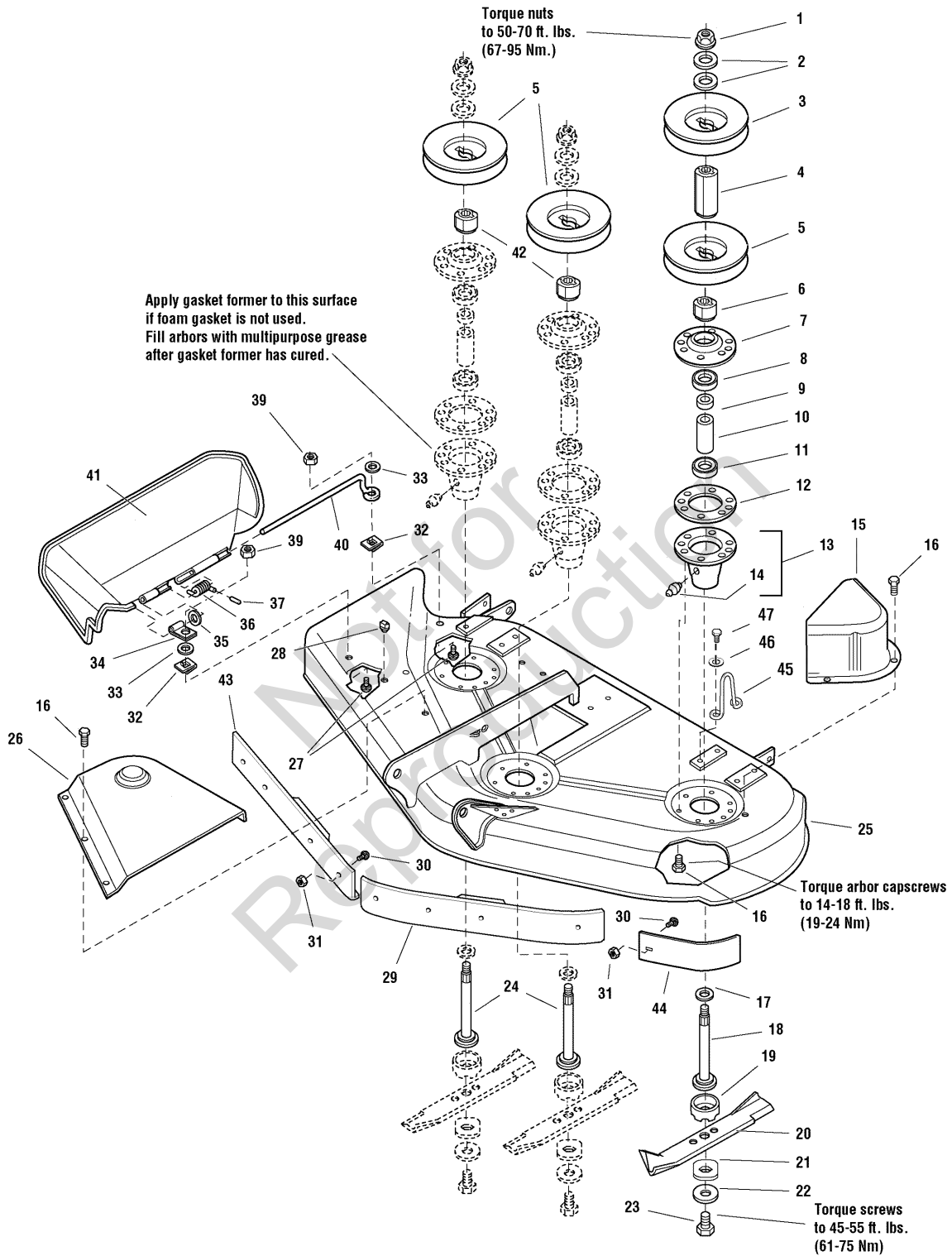
1695395 - 50" Mower

2690744 - Conquest

50" Mower Deck - Housing, Arbors & Blades Group

985972

NOTE: Unless noted otherwise, use the standard hardware torque specification chart.



The above parts group applies to the following Mfg. Nos.:

2690679 - Conquest

50" Mower Deck - Housing, Arbors & Blades Group

REF NO	PART NO.	QTY.	DESCRIPTION
1	1714419SM	3	NUT, Hex Flange, 9/16-18
2	1713675SM	6	WASHER, Bellevilled, 9/16
3	1713161SM	1	PULLEY
4	1713158SM	1	HUB, Double Pulley
5	1713098SM	3	PULLEY
6	1713533SM	1	HUB, Double Pulley
7	1655729ASM	3	COVER, Arbor Housing
8	2108202SM	3	BEARING, Ball, 3/4 x 1-3/4 x 5/8
9	1715724SM	3	SPACER, 21/32 x 3/4 x 5/8
10	1732544SM	3	SPACER, 11/16 x 5/32 x 2-11/16
11	1705897SM	3	BEARING, Ball, 11/16 x 1-9/16 x 15/32
12	1707335SM	3	GASKET, Foam
13	1713338ASM	3	HOUSING ASSEMBLY, Arbor Bottom, w/Lube Fitting (Includes Ref. No. 14)
14	1704314SM	3	FITTING, Grease
15	1720560ASM	1	COVER, Arbor
16	1664847SM	26	CAPSCREW, Hex Head Taptite, 5/16-18 x 3/4
17	1713619SM	3	WASHER, Bellevilled, 9/16, Black
18	1713612SM	1	SHAFT, Arbor (LH)
19	1713196SM	3	SHIELD, Grass, Lower
20	1708229ASM	3	BLADE, Mower, 18-1/8
21	1713089SM	3	WASHER, Hex, 11/16 x 2
22	1656916SM	3	WASHER, Spring 15/32, Black
23	2823471SM	3	CAPSCREW, Hex Head, 7/16-14 x 1
24	1713195SM	2	SHAFT, Arbor (Center & RH)
25	1685495SM	1	MOWER HOUSING ASSEMBLY, 50" Mower (Orange)
25	1687155SM	1	MOWER HOUSING ASSEMBLY, 50" Mower (Red)
26	1715673SM	1	COVER, Arbor
27	1931318SM	2	CARRIAGE BOLT, 1/4-20 x 7/8
28	1705115SM	1	PLUG, Hole
29	1716870ASM	1	BAFFLE, Anti-Blowout, LH (CE/Export)
30	1931333SM	2/11	CARRIAGE BOLT, 5/16-18 x 3/4
31	1927557SM	2/11	NUT, Hex, Whizlock, 5/16-18
32	1960518SM	2	NUT, Push
33	1960353SM	2	WASHER, 1/4, Black
34	1704873SM	1	CLAMP
35	1919326SM	1	WASHER, 5/16, Black
36	7101082SM	1	SPRING
37	1723323SM	1	CAP, Spring End
39	1920397SM	2	NUT, Hex, 1/4-20 ESNA
40	1706709SM	1	ROD, Deflector, Front
41	1705449SM	1	DEFLECTOR, Plastic
42	1713197SM	2	HUB, Pulley, Center & RH
43	1716869ASM	1	BAFFLE, Anti-Blowout, RH (CE/Export)

Footnotes

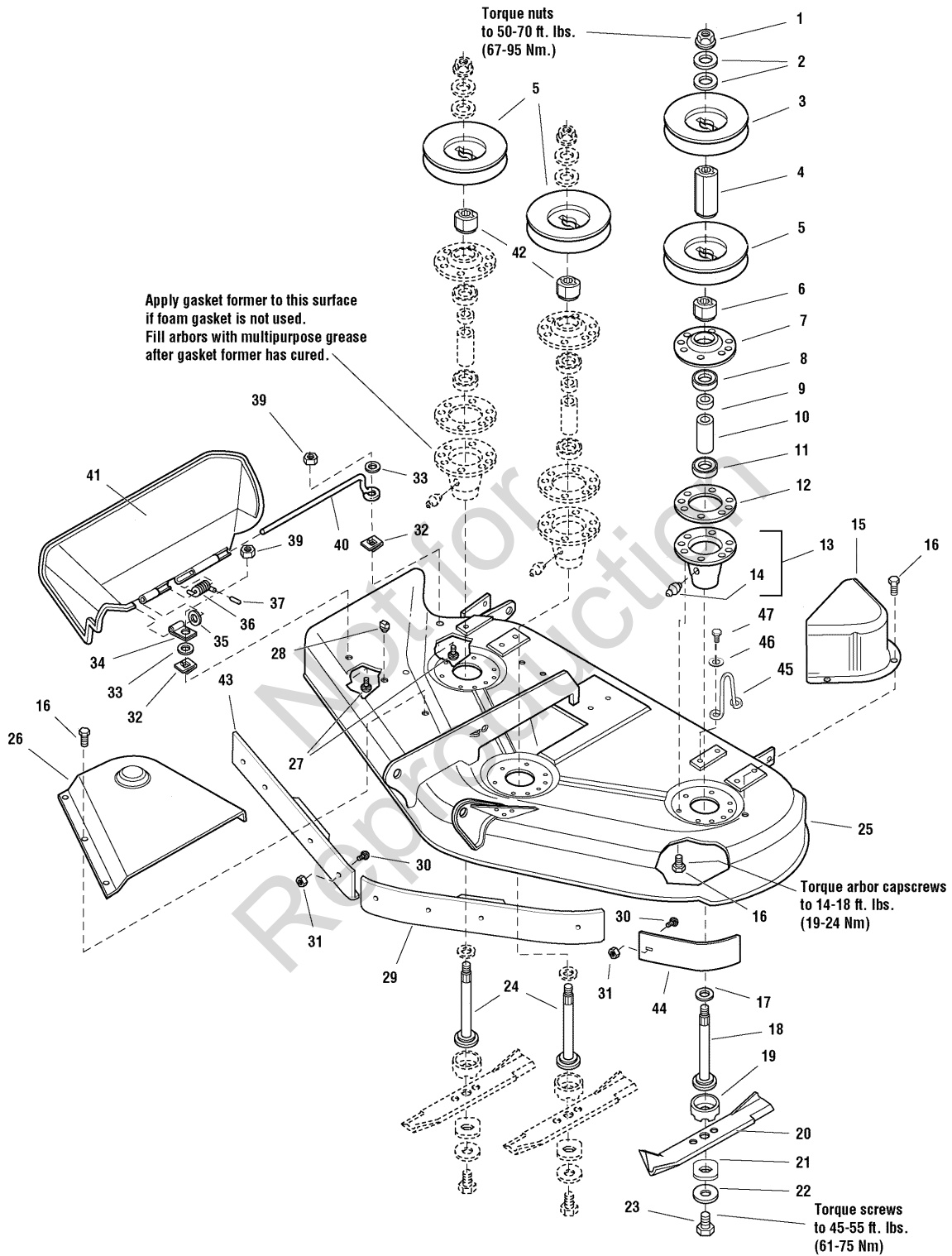
The above parts group applies to the following Mfg. Nos.:

2690679 - Conquest

50" Mower Deck - Housing, Arbors & Blades Group

985972

NOTE: Unless noted otherwise, use the standard hardware torque specification chart.



The above parts group applies to the following Mfg. Nos.:

2690679 - Conquest

50" Mower Deck - Housing, Arbors & Blades Group

REF NO	PART NO.	QTY.	DESCRIPTION
45	1719929SM	1	UPSTOP

Not for
Reproduction

Footnotes

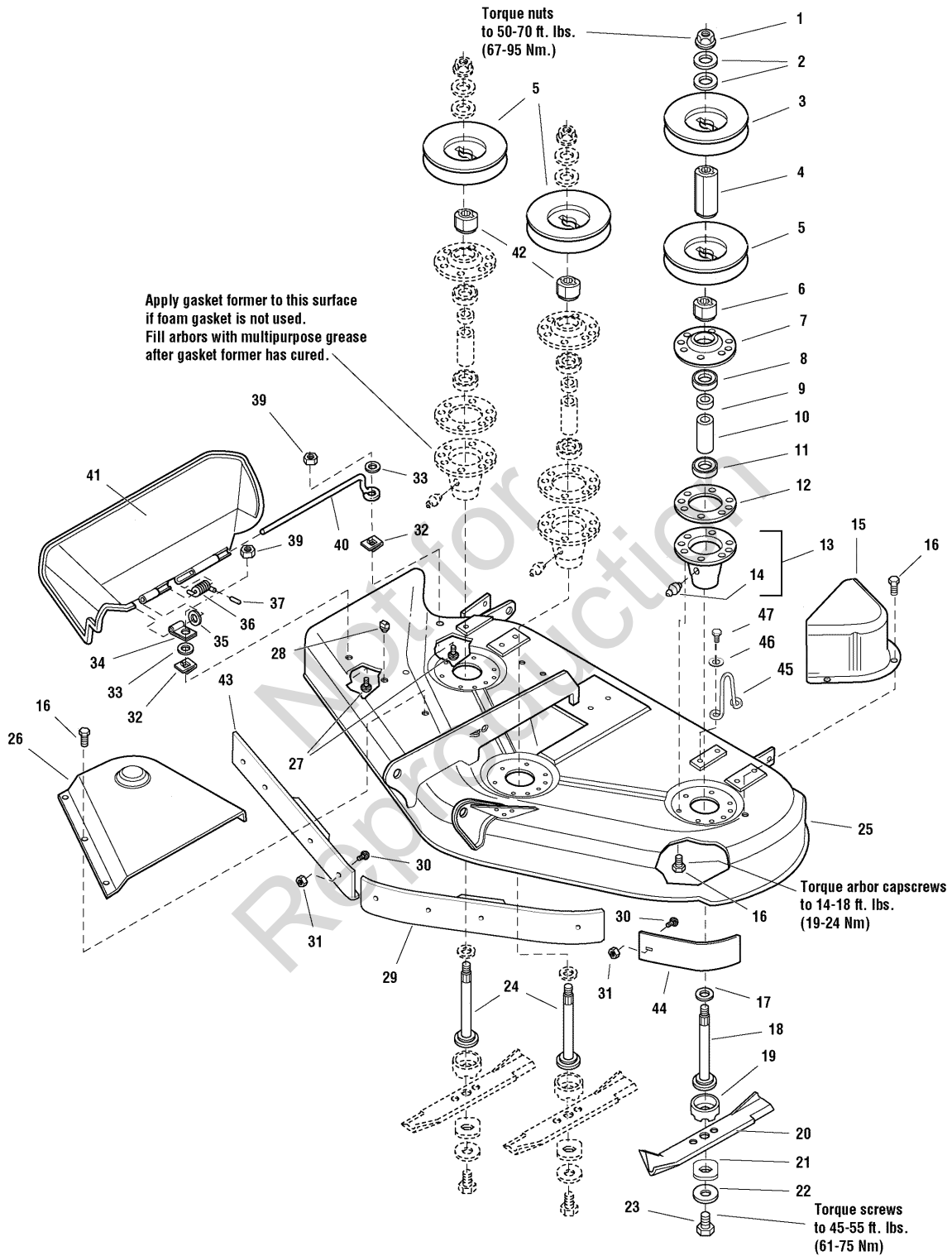
The above parts group applies to the following Mfg. Nos.:

2690679 - Conquest

50" Mower Deck - Housing, Arbors & Blades Group

985972

NOTE: Unless noted otherwise, use the standard hardware torque specification chart.



The above parts group applies to the following Mfg. Nos.:

2690679 - Conquest

50" Mower Deck - Housing, Arbors & Blades Group

REF NO	PART NO.	QTY.	DESCRIPTION
44	1724538ASM	1	BAFFLE, Anit-Blowout
46	1924940SM	2	WASHER
47	1664847SM	1	CAPSCREW, Taptite 5/16-18 x 3/4

Not for
Reproduction

Footnotes

The above parts group applies to the following Mfg. Nos.:

2690679 - Conquest

Not for
Reproduction

Not for
Reproduction

Not for
Reproduction

Hardware Identification & Torque Specifications

Torque Specification Chart								
FOR STANDARD METRIC MACHINE HARDWARE (Tolerance ± 20%)								
Property Class	5.6		8.8		10.9		12.9	
	Class 5.6		Class 8.8		Class 10.9		Class 12.9	
Size Of Hardware	in/lbs	Nm.	in/lbs	Nm.	in/lbs	Nm.	in/lbs	Nm.
	ft/lbs		ft/lbs		ft/lbs		ft/lbs	
M3	5.88	.56	13.44	1.28	19.2	1.80	22.92	2.15
M4	13.44	1.28	30.72	2.90	43.44	4.10	52.56	4.95
M5	26.4	2.50	60.96	5.75	5.97	8.10	7.15	9.7
M6	44.64	4.3	7.3	9.9	10.3	14	12.1	16.5
M7	5.2	7.1	12.1	16.5	16.9	23	19.9	27
M8	7.7	10.5	17.7	24	25	34	29	40
M10	15	21	35	48	50	67	59	81
M12	26	36	61	83	86.2	117	103	140
M14	42	58	101	132	136	185	162	220
M16	64	88	147	200	210	285	250	340
M18	89	121	202	275	287	390	346	470
M20	126	171	290	390	405	550	486	660
M22	169	230	390	530	559	745	656	890
M24	217	295	497	375	708	960	840	1140
M27	320	435	733	995	1032	1400	1239	1680
M30	435	590	995	1350	1401	1900	1681	2280
M33	590	800	1349	1830	1902	2580	2278	3090
M36	759	1030	1740	2360	2441	3310	2935	3980
M39	988	1340	2249	3050	3163	4290	3798	5150

Torque Specification Chart						
FOR STANDARD MACHINE HARDWARE (Tolerance ± 20%)						
Hardware Grade	No Marks		SAE Grade 5		SAE Grade 8	
	SAE Grade 2		SAE Grade 5		SAE Grade 8	
Size Of Hardware	in/lbs	Nm.	in/lbs	Nm.	in/lbs	Nm.
	ft/lbs		ft/lbs		ft/lbs	
8-32	19	2.1	30	3.4	41	4.6
8-36	20	2.3	31	3.5	43	4.9
10-24	27	3.1	43	4.9	60	6.8
10-32	31	3.5	49	5.5	68	7.7
1/4-20	66	7.6	8	10.9	12	16.3
1/4-28	76	8.6	10	13.6	14	19.0
5/16-18	11	15.0	17	23.1	25	34.0
5/16-24	12	16.3	19	25.8	29	34.0
3/8-16	20	27.2	30	40.8	45	61.2
3/8-24	23	31.3	35	47.6	50	68.0
7/16-14	30	40.8	50	68.0	70	95.2
7/16-20	35	47.6	55	74.8	80	108.8
1/2-13	50	68.0	75	102.0	110	149.6
1/2-20	55	74.8	90	122.4	120	163.2
9/16-12	65	88.4	110	149.6	150	204.0
9/16-18	75	102.0	120	163.2	170	231.2
5/8-11	90	122.4	150	204.0	220	299.2
5/8-18	100	136	180	244.8	240	326.4
3/4-10	160	217.6	260	353.6	386	525.0
3/4-16	180	244.8	300	408.0	420	571.2
7/8-9	140	190.4	400	544.0	600	816.0
7/8-14	155	210.8	440	598.4	660	897.6
1-8	220	299.2	580	788.8	900	1,244.0
1-12	240	326.4	640	870.4	1,000	1,360.0

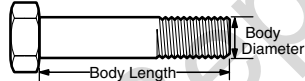
The guides and ruler furnished below are designed to help you select the appropriate hardware.



Nut, M8

Thread Diameter (mm)
Inside Diameter (in)
Threads per inch

Nut, 1/2-16



Screw, M8 - 1.25 x 25

Thread Diameter (mm)
Body Diameter
Distance between threads (mm)
Threads per inch
Body Length (mm)
Body Length (in)

Screw, 1/2- 16 x 2



Standard Hardware Sizing

When a washer or nut is identified as **1/2"** (M8), this is the *Nominal size*, meaning the *inside diameter* is 1/2 inch (8mm metric thread diameter); if a second number is present it represents the *threads per inch* (distance between threads).

When bolt or capscrew is identified as **1/2 - 16 x 2"** (M8 - 1.25 x 50), this means the *Nominal size*, or body diameter is 1/2 inch (8mm metric thread diameter), the second number, 16, represents the *threads per inch*, (1.25 thread diameter). The final number is the body length of the bolt or screw, 2 inches (50mm).

NOTES

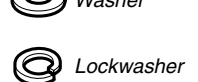
- These torque values are to be used for all hardware excluding: locknuts, self-tapping screws, thread forming screws, sheet metal screws and socket head setscrews.
- Recommended seating torque values for locknuts:
 - for prevailing torque locknuts - use 65% of grade 5 torques.
 - for flange whizlock nuts and screws - use 135% of grade 5 torques.
- Unless otherwise noted on assembly drawings, all torque values must meet this specification.

Common Hardware Types

Hex Head Capscrew



Washer



Carriage Bolt



Hex Nut

Wrench & Fastener Size Guide

1/4" Bolt or Nut Wrench—7/16"	5/16" Bolt or Nut Wrench—1/2"	3/8" Bolt or Nut Wrench—9/16"	7/16" Bolt or Nut Wrench (Bolt)—5/8" Wrench (Nut)—11/16"	1/2" Bolt or Nut Wrench—3/4"
M6 Bolt or Nut Wrench—10mm	M8 Bolt or Nut Wrench—13mm	M10 Bolt or Nut Wrench—17mm	M12 Bolt or Nut Wrench—19mm	M14 Bolt or Nut Wrench—22mm

Not for
Reproduction

**IT IS THE POLICY OF BRIGGS & STRATTON CORP. TO IMPROVE ITS PRODUCTS
WHENEVER IT IS POSSIBLE AND PRACTICAL TO DO SO. WE RESERVE THE RIGHT TO
MAKE CHANGES OR ADD IMPROVEMENTS AT ANY TIME WITHOUT INCURRING ANY
OBLIGATION TO MAKE SUCH CHANGES ON PRODUCTS.**

Briggs & Stratton Yard Power Products Group

3515 N. 124 Street / PO Box 702
Wauwatosa, WI 53222 USA

www.simplicitymfg.com

© Copyright 2009 by Briggs & Stratton Corporation
Milwaukee, WI, USA. All rights reserved