

Attachment Illustrated Parts List



Attachment

Mfg. No.	Description
1695195	Hitch Sub Frame

Simplicity

MANUFACTURING, INC.
500 N. Spring Street / PO Box 997
Port Washington, WI 53074-0997 USA

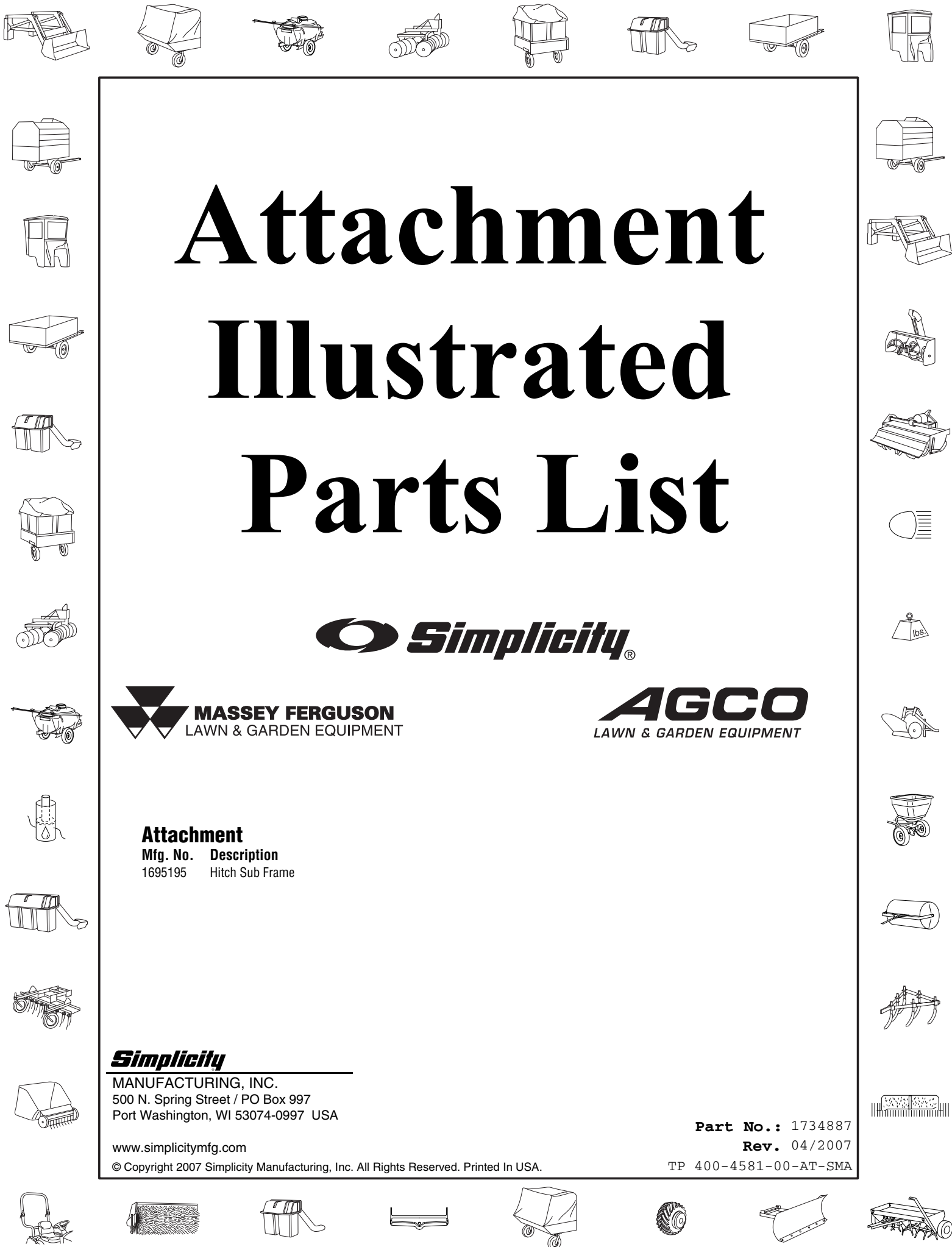
www.simplicitymfg.com

© Copyright 2007 Simplicity Manufacturing, Inc. All Rights Reserved. Printed In USA.

Part No.: 1734887

Rev. 04/2007

TP 400-4581-00-AT-SMA

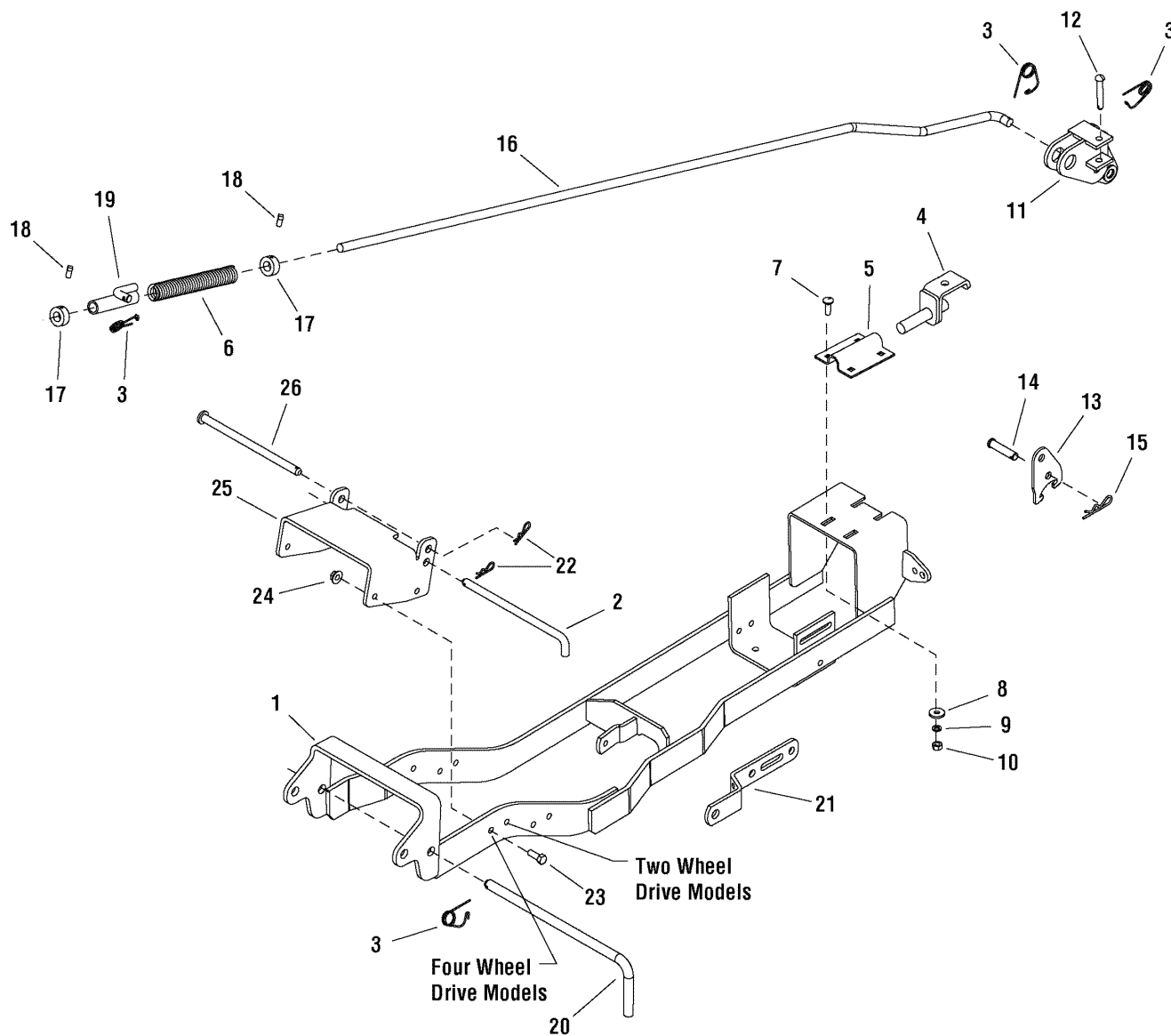


PRODUCT COMPONENTS	PAGES
Hitch Group	4
Torque Specification Chart	Inside Back Cover

Hitch Group

987583

NOTE: Unless noted otherwise,
use the standard hardware torque
specification chart.



The above parts group applies to the following Mfg. Nos.:
1695195 - Hitch Sub Frame

Hitch Group

REF NO	PART NO.	QTY.	DESCRIPTION
1	1733779ASM	1	PUSH BAR ASSEMBLY, Hitch Sub Frame
2	1733812SM	1	ROD, Hitch
3	2176012SM	5	RETAINER, Pin Spring
4	1723292SM	1	SHAFT & HOOK ASSEMBLY
5	1653768SM	1	CLAMP, Wheel Support for 3/4 Shaft
6	2171011SM	1	SPRING, Compression
7	1931335SM	4	CARRIAGE BOLT, 5/16-18 x 1 G5
8	1919381SM	4	WASHER, 5/16
9	1917356SM	4	LOCKWASHER, Spring 5/16
10	1917372SM	4	NUT, Hex 5/16-18
11	1724025SM	1	LEVER ASSEMBLY, Lift Snow Attach
12	2105249SM	1	PIN, Round Head Drilled 3/8 x 2-3/8
13	1722469SM	1	PLATE, Presser Lock
14	1722819SM	1	PIN, Flat Head Drilled
15	1960033SM	1	CLIP, Hair Pin 1/8 Diameter Spring
16	1722946SM	1	ROD, Rear Lift
17	1729258SM	2	COLLAR, Set
18	1928721SM	2	SCREW, Set, Square Head Cup Point 5/16-18 x 1/2 G8
19	1723115SM	1	TUBE & PIN ASSEMBLY, Guide
20	1723309SM	1	ROD, Hitch
21	1723795ASM	1	BAR, Lift, 8-15/16 Long
22	1960074SM	2	CLIP, Hair Pin
23	1921210SM	4	CAPSCREW, Hex Head 3/8-16 x 1 G5
24	1928352SM	4	NUT, Hex Flange 3/8-16 Whiz Lock
25	1733814ASM	1	LATCH, Push Bar
26	1734050SM	1	ROD, Mower Hitch

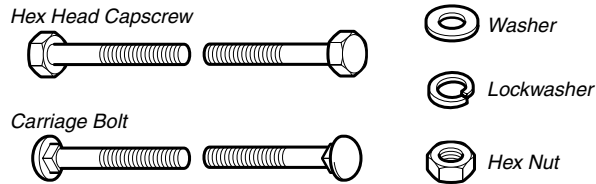
Footnotes

The above parts group applies to the following Mfg. Nos.:

1695195 - Hitch Sub Frame

Hardware Identification & Torque Specifications

Common Hardware Types

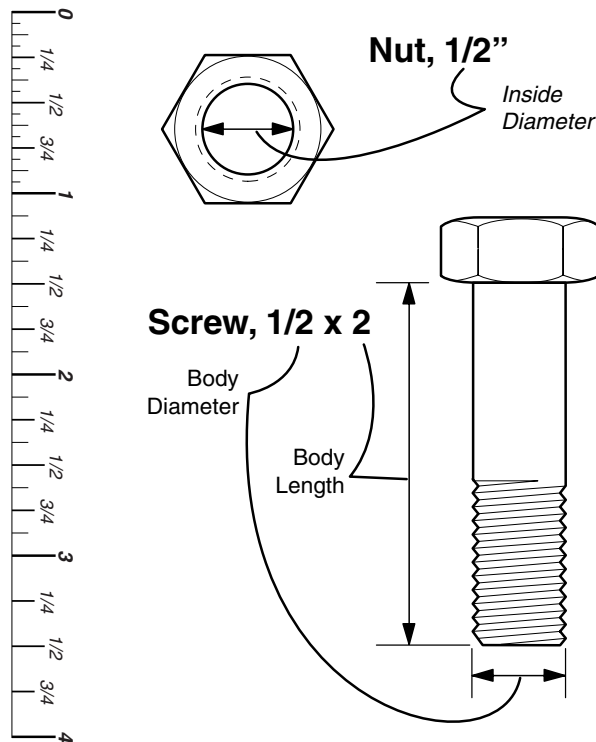


Standard Hardware Sizing

When a washer or nut is identified as **1/2"**, this is the *Nominal size*, meaning the *inside diameter* is 1/2 inch; if a second number is present it represent the *threads per inch*

When bolt or capscrew is identified as **1/2 - 16 x 2"**, this means the *Nominal size*, or *body diameter* is 1/2 inch; the second number represents the *threads per inch* (16 in this example, and the final number is the *body length* of the bolt or screw (in this example 2 inches long).

The guides and ruler furnished below are designed to help you select the appropriate hardware and tools.



Torque Specification Chart						
FOR STANDARD MACHINE HARDWARE (Tolerance ± 20%)						
Hardware Grade	No Marks SAE Grade 2		SAE Grade 5		SAE Grade 8	
	in/lbs ft/lbs	Nm.	in/lbs ft/lbs	Nm.	in/lbs ft/lbs	Nm.
8-32	19	2.1	30	3.4	41	4.6
8-36	20	2.3	31	3.5	43	4.9
10-24	27	3.1	43	4.9	60	6.8
10-32	31	3.5	49	5.5	68	7.7
1/4-20	66	7.6	8	10.9	12	16.3
1/4-28	76	8.6	10	13.6	14	19.0
5/16-18	11	15.0	17	23.1	25	34.0
5/16-24	12	16.3	19	25.8	27	34.0
3/8-16	20	27.2	30	40.8	45	61.2
3/8-24	23	31.3	35	47.6	50	68.0
7/16-14	30	40.8	50	68.0	70	95.2
7/16-20	35	47.6	55	74.8	80	108.8
1/2-13	50	68.0	75	102.0	110	149.6
1/2-20	55	74.8	90	122.4	120	163.2
9/16-12	65	88.4	110	149.6	150	204.0
9/16-18	75	102.0	120	163.2	170	231.2
5/8-11	90	122.4	150	204.0	220	299.2
5/8-18	100	136	180	244.8	240	326.4
3/4-10	160	217.6	260	353.6	386	525.0
3/4-16	180	244.8	300	408.0	420	571.2
7/8-9	140	190.4	400	544.0	600	816.0
7/8-14	155	210.8	440	598.4	660	897.6
1-8	220	299.2	580	788.8	900	1,244.0
1-12	240	326.4	640	870.4	1,000	1,360.0

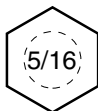
NOTES

- These torque values are to be used for all hardware excluding: locknuts, self-tapping screws, thread forming screws, sheet metal screws and socket head setscrews.
- Recommended seating torque values for locknuts:
 - for prevailing torque locknuts - use 65% of grade 5 torques.
 - for flange whizlock nuts and screws - use 135% of grade 5 torques.
- Unless otherwise noted on assembly drawings, all torque values must meet this specification.

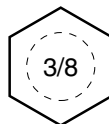
Wrench & Fastener Size Guide



1/4" Bolt or Nut
Wrench—7/16"



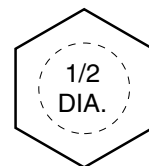
5/16" Bolt or Nut
Wrench—1/2"



3/8" Bolt or Nut
Wrench—9/16"



7/16" Bolt or Nut
Wrench (Bolt)—5/8"
Wrench (Nut)—11/16"



1/2" Bolt or Nut
Wrench—3/4"