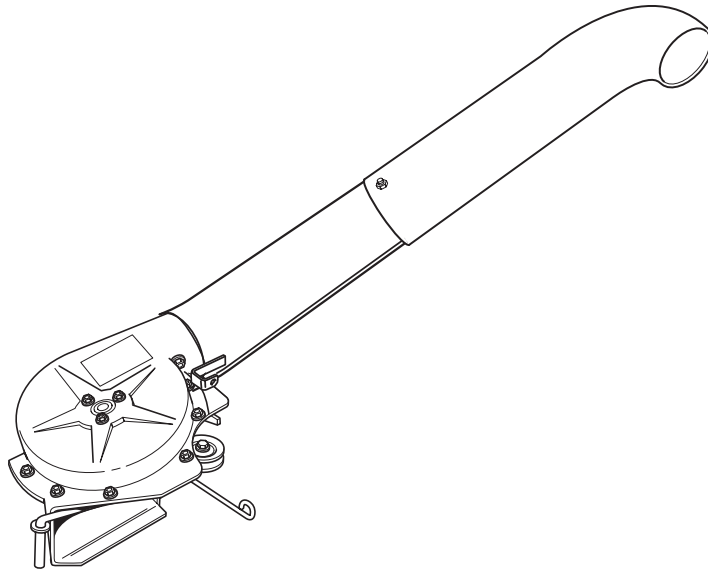




# OPERATOR'S MANUAL



## Turbo Vacuum System For 38", 44" & 50" Mower Decks

Mfg. No.	Description
1694924	Turbo Vacuum Collection System

Manual No. 1732839  
Revision 02  
Revision Date 10/2006  
TP 100-4286-02-AT-SMAN

# Table of Contents

- Safety Rules & Information .....2**
  - Safety Rules .....2
  - Safety Decals .....3
  - Safety Icons .....3
  - Identification Numbers .....4
  
- Assembly .....5**
  - Initial Assembly.....5
  
- Normal Removal and Installation .....20**
  - Normal Removal and Installation.....20


Safety

Assembly

Normal Removal & Installation

*NOTE: In this manual, “left” and “right” are referred to as seen from the operating position.*



Read these safety rules and follow them closely. Failure to obey these rules could result in loss of control of unit, severe personal injury or death to you, or bystanders, or damage to property or equipment. **This mowing deck is capable of amputating hands and feet and throwing objects.** The triangle  in text signifies important cautions or warnings which must be followed.

## PREPARATION

1. Do not operate the equipment without wearing adequate outer garments and safety goggles. Avoid loose-fitting clothes and use protective footwear that will improve footing on slippery surfaces.

## TRAINING

1. Read the operating and service instructions carefully. Be thoroughly familiar with the controls and the proper use of the equipment. Know how to stop the unit and disengage the control quickly.
2. Keep the area of operation clear of all persons, particularly small children, and pets.

## GENERAL OPERATION

- 1 Know the tractor controls and how to stop quickly.  
**READ THE TRACTOR OPERATOR'S MANUAL.**
- 2 Read and obey all safety decals.  
Only allow responsible adults, who are familiar with the instructions, to operate the unit.
- 3 Disengage the electric clutch (PTO). Shut off the engine and wait for all moving parts to stop before attaching, adjusting, or disconnecting any part of the collection system.
- 4 Check the collection system to make sure it is bolted tightly to the tractor.
- 5 **DO NOT** operate the mower without either the entire grass catcher or the deflector in place.
- 6 Turn off the PTO switch to disengage the blades when not mowing.
- 7 **DO NOT** mow in reverse. Always look down and behind before and while travelling in reverse.
- 8 **DO NOT** turn sharply when travelling alongside a building or any object. Slow down before turning.
- 9 **DO NOT** carry passengers on the tractor.
- 10 When blower assembly is removed from the mower deck, the deflector must be properly installed.
- 11 If the mower stalls or the turbo blower chute plugs:
  - a. Disengage the electric clutch (PTO);
  - b. Stop the engine and remove the key;
  - c. Set the parking brake, and wait for all moving parts to stop.
- D. Remove the foreign object or clear the chute with a piece of wood before restarting the engine.  
**NEVER** place hands into blower housing to clear jammed object. Blower may rotate when object is removed.
- 12 For added tractor stability and to prevent tipping or loss of control:
  - a. Use reduced speed on uneven ground and when turning corners.
  - b. Reduce loads on hillsides. It is recommended that the collection system be kept only half full when negotiating any slopes. Start mowing on slopes when the collection system is empty.
  - c. Mow up and down the face of slopes; never across the face of any slope.
12. Never operate the machine without proper guards, plates, or other safety protective devices in place.
13. Use only attachments and accessories approved of by the manufacturer or the machine.

## CHILDREN

Tragic accidents can occur if the operator is not alert to the presence of children. Children are often attracted to the unit and the operating activity. Never assume that children will remain where you last saw them.

1. Keep children out of the work area and under the watchful care of another responsible adult.
2. Be alert and turn unit off if children enter the area.
3. Never allow children to operate the unit.

## SERVICE AND MAINTENANCE

1. Keep machine, attachments, and accessories in safe working condition.
2. Clear debris from machine before each use.
3. Always refer to the operating instructions for important details if the machine is to be stored for an extended period.
4. The collector bag will deteriorate with time and use. Inspect it regularly and replace if it becomes worn.

## Safety Decals

This unit has been designed and manufactured to provide you with the safety and reliability you would expect from an industry leader in outdoor power equipment manufacturing.


Although reading this manual and the safety instructions it contains will provide you with the necessary basic knowledge to operate this equipment safely and effectively, we have placed several safety labels on the unit to remind you of this important information while you are operating your unit.

All DANGER, WARNING, CAUTION and instructional messages on your unit should be carefully read and obeyed. Personal bodily injury can result when these instructions are not followed. The information is for your safety and it is important! The safety decals below are on your unit.

If any of these decals are lost or damaged, replace them at once. See your local dealer for replacements.

These labels are easily applied and will act as a constant visual reminder to you, and others who may use the equipment, to follow the safety instructions necessary for safe, effective operation.

## Safety Icons

The alert symbol  is used to identify safety information about hazards that can result in personal injury. A signal word (DANGER, WARNING, or CAUTION) is used with the alert symbol to indicate the likelihood and the potential severity of the injury. In addition, a hazard icon may be used to represent the type of hazard. An explanation of hazard levels and icons are as follows:

### DANGER

This indicates a hazard which, if not avoided, **will result in serial injury or death.**

### WARNING

This indicates a hazard which, if not avoided, **could result in serial injury or death.**

### CAUTION

This indicates a hazard which, if not avoided, **might result in minor or moderate injury.**

## CAUTION or NOTICE



These messages presented without the alert symbol indicate a situation where the unit or property could be damaged.



*Decal - Danger, Thrown Objects / Rotating Blades, Part No. 1700259*



*Decal - Warning, Shield Placement / Deflector Position, Part No. 1717291*

Hazard	Safety Icon
Amputation - Rotating Parts	
Thrown Objects	

## Identification Numbers

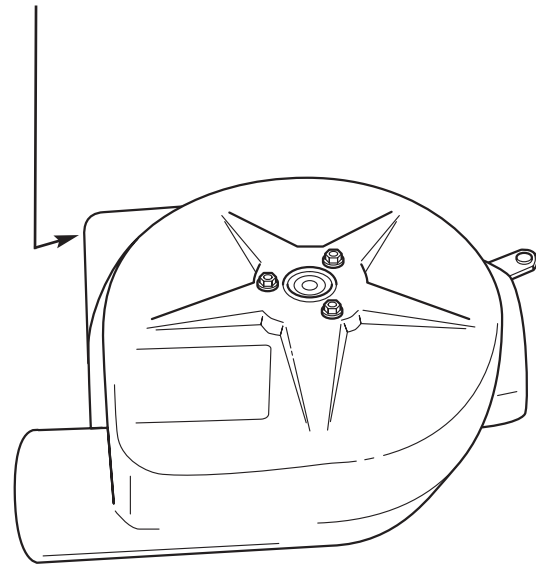
When contacting your authorized dealer for replacement parts, service, or information on the chassis or engine, you **MUST** have these numbers.

Record your model name/number, manufacturer's identification numbers, and engine serial numbers in the space provided for easy access. These numbers can be found in the locations shown.

CE Models: Place the extra copy of the identification tag in this manual.



Attachment Identification Data	
Model Description Name/Number	
Unit PART Number	Unit SERIAL Number
Dealer Name	Date Purchased



# Initial Assembly

Assembly

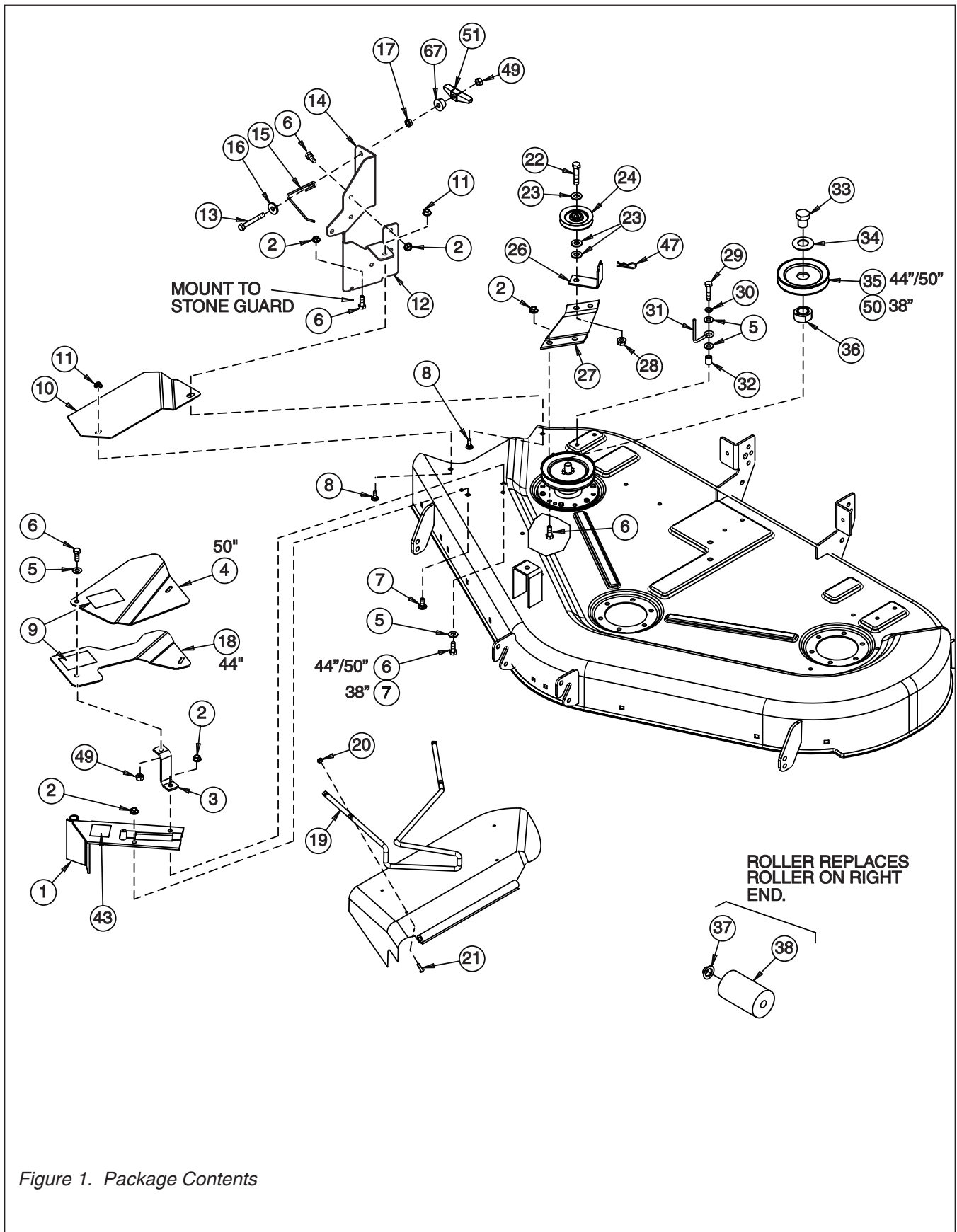


Figure 1. Package Contents

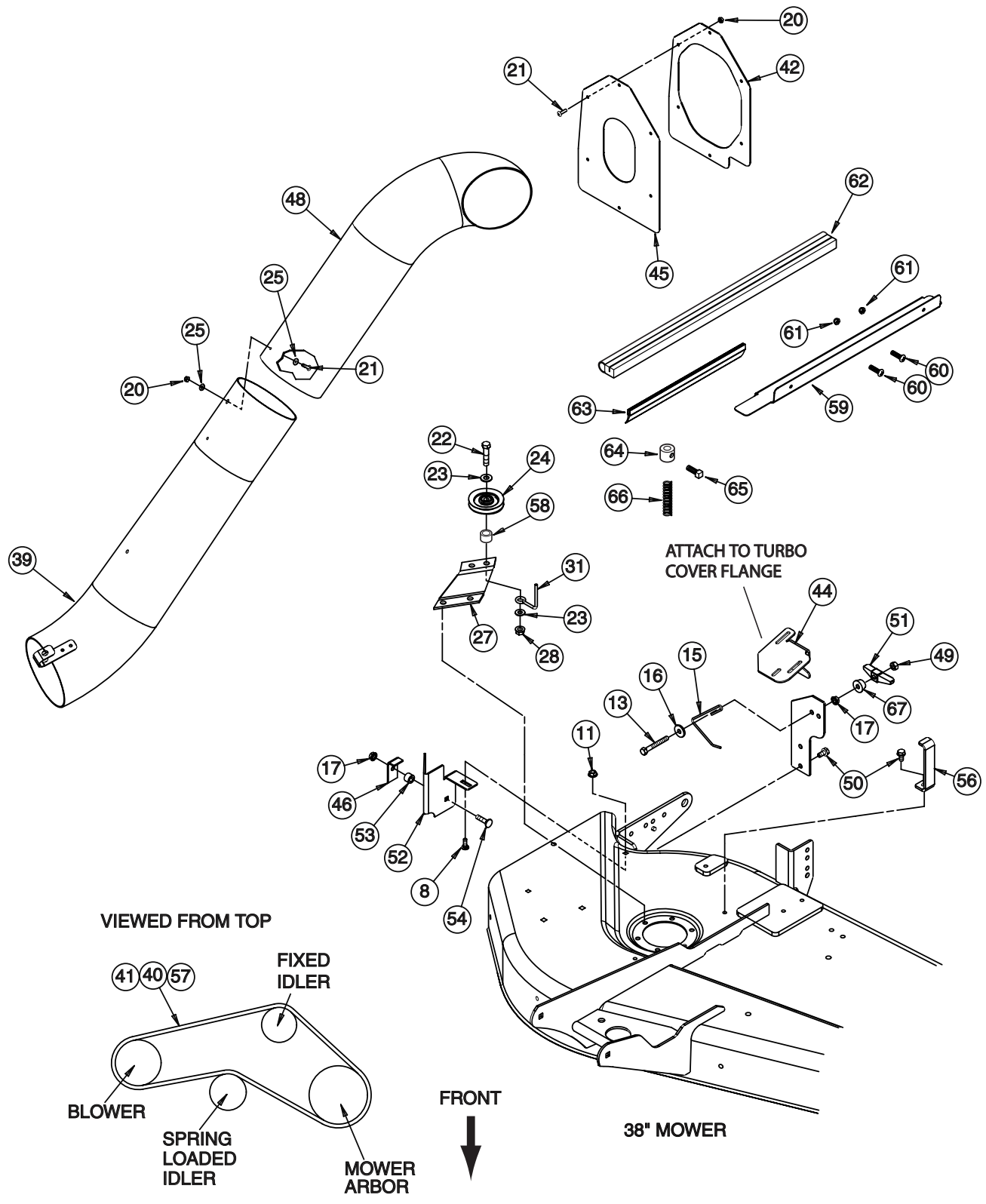
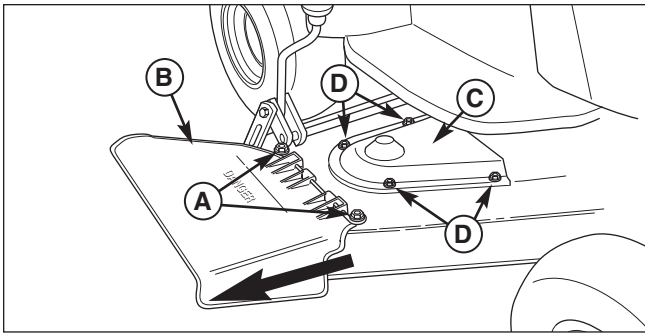


Figure 1a. Package Contents (continued)

Ref	Part No.	Qty.	Description	Ref	Part No.	Qty.	Description
1	1722546A	1	PIVOT & BRACKET ASSEMBLY	54	1960223	1	CARRIAGE BOLT, 5/16-18 x 1-1/4
2	1931277	5	NUT, Hex, Flange Lock, 5/16-18	55	1713091	1	PULLEY, 5.0 O.D.
3	1718304A	1	SUPPORT, Belt Cover	56	1722750A	1	UP-STOP BRACKET
4	1724376A	1	BELT Cover, 50" Mower Decks	57	1724372	1	V-BELT, 47-11/16, 38" Mower Decks
5	1919326	4	WASHER, 5/16	58	1667811	1	SPACER
6	1923325	5	CAPSCREW, 5/16-18 x 7/8	59	1733580A	1	DEFLECTOR PLATE
7	1931333	2	Carriage Bolt, 5/16-18 x 3/4	60	1960404	2	SCREW, #10-24 x 3/4
8	1931317	2	Carriage Bolt, 1/4-20 x 3/4	61	1933896	2	NUT, Nylock, #10-24
9	1717291	2	DECAL, Warning	62	1733579	1	SEAL, Rubber, Thick
10	1732591A	1	COVER	63	1717496	1	SEAL, Rubber, Thin
11	1960685	2	NUT, Hex, KEPS Lock, 1/4-20	64	1719777	1	COLLAR
12	1732592A	1	BAFFLE	65	1928721	1	SCREW, Set
13	1960318	1	CAPSCREW, 5/16-18 x 2-1/2	66	1729277	1	SPRING, Compression
14	1732619A	1	SUPPORT	67	1709256	1	WASHER, CUP
15	1705064	1	SPRING LATCH				
16	1919381	1	WASHER				
17	1960636	2	NUT, Hex, KEPS Lock, 5/16-18				
18	1724374A	1	BELT Cover, 44" Mower Decks				
19	1718295	1	ROD				
20	1933896	11	NUT, Hex, #10-24				
21	1960404	11	SCREW, Phillips #10-24 x 3/4				
22	1923701	1	CAPSCREW, 3/8-16 x 2				
23	1924940	3	WASHER, 3/8				
24	1714817	1	PULLEY, Idler, 2-3/4 O.D.				
25	1910531	2	WASHER				
26	1724373A	1	"L" BRACKET				
27	1704768A	1	"Z" BRACKET				
28	1931211	1	NUT, Hex, Flange Lock, 3/8-16				
29	1921221	1	CAPSCREW, 5/16-18 x 1-1/2				
30	1917356	1	LOCKWASHER, 5/16				
31	2172845	1	BELT STOP				
32	1710703	1	SPACER				
33	1733078	1	NUT, Sleeve, 9/16-18				
34	1603592	1	WASHER, Bellville				
35	1709941	1	PULLEY, 4-5/16 O.D.				
36	1713623	1	HUB				
37	1960520	1	PUSH NUT, 5/8				
38	1713540	1	ROLLER				
39	1719719	1	TUBE & CLIP ASSEMBLY				
40	1732801	1	V-BELT, 39-5/8, 50" Mower Decks				
41	1705142	1	V-BELT, 39-11/16, 44" Mower Decks				
42	1732735A	1	FLANGE, Seal				
43	N/A	1	DECAL, Patent				
44	1733077	1	LATCH				
45	1732799	1	SEAL				
46	1705308A	1	"L" BRACKET				
47	1960074	1	CLIP, Hair Pin				
48	1732800	1	ELBOW				
49	1919438	1	NUT, Hex, Nylock, 5/16-18				
50	1930601	3	SCREW, Hex, Taptite, 5/16-18 x 5/8				
51	720727	1	WINGNUT, 5/16				
52	1733076	1	DEFLECTOR				
53	1666294	1	SPACER				

Assembly





**Figure 2. Remove Deflector and Arbor Cover**  
 A. Carriage Bolts, Washers, Lockwashers, & Nuts  
 B. Deflector  
 C. Arbor Cover, Right Hand  
 D. Taptite Screws

**Remove Deflector and Arbor Cover - All Models**

1. Remove the mower deck from the unit (see Operator's Manual for Mower Deck Removal). Remove and discard the carriage bolts, washers, lockwashers, nuts (A, Figure 2) and deflector rod. Retain the deflector.
2. Remove and discard the taptite screws (D) and arbor cover (C).

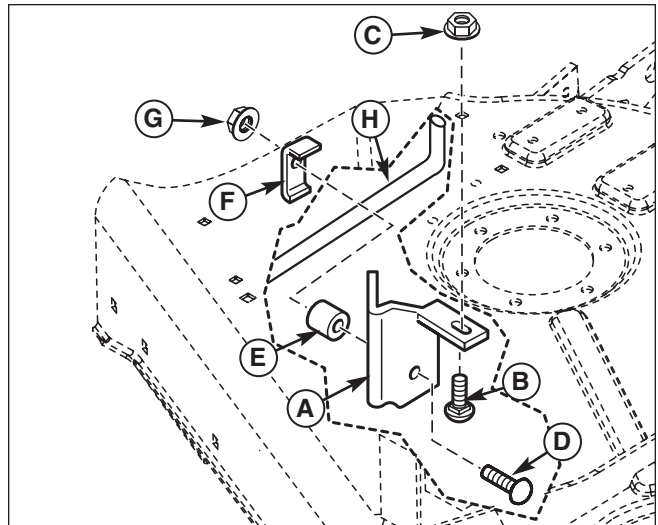
**Install the Discharge Baffle**

**38" MOWER DECKS**

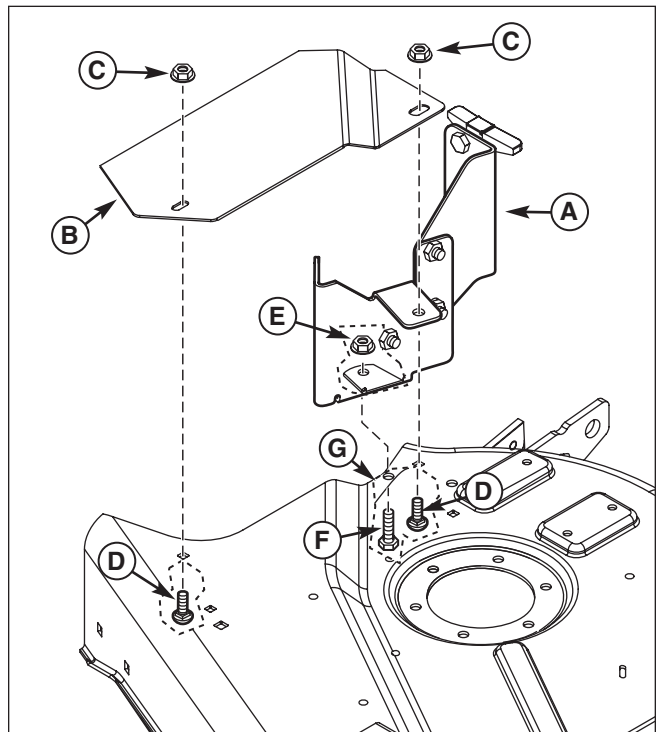
1. Install discharge baffle (A, Figure 3) using 1/4-20 x 3/4 carriage bolt (B) and 1/4-20 locknut (C). Do not tighten hardware at this time.
2. Install 5/16-18 x 1-1/4 carriage bolt (D), spacer (E), bracket (F) and 5/16-18 locknut (G) as shown.
3. Tighten all hardware.

**44 AND 50" MOWER DECKS**

1. Install discharge baffle (A, Figure 4) to stone guard (G) using 5/16-18 x 7/8 capscrew (F) and 5/16-18 locknut (E) as shown.
2. Install discharge baffle assembly (A) to mower deck over cover (B) using 1/4-20 x 3/4 carriage bolt (D) and 1/4-20 locknut (C) as shown. Do not tighten hardware at this time.
3. Install front of cover (B, Figure 4) to front of mower deck using 1/4-20 x 3/4 carriage bolt (D) and 1/4-20 locknut (C). Do not tighten hardware at this time.
4. Tighten all hardware.



**Figure 3. Install Discharge Baffles - 38" Mower**  
 A. Discharge Baffle  
 B. Carriage Bolt, 1/4-20 x 3/4  
 C. Locknut, KEPS, 1/4-20  
 D. Carriage Bolt, 5/16-18 x 1-1/4  
 E. Spacer  
 F. Bracket  
 G. Locknut, KEPS, 5/16-18  
 H. Stone Guard



**Figure 4. Install Discharge Baffles - 44" and 50" Mower**  
 A. Discharge Baffle Assembly  
 B. Cover, Mower  
 C. Locknut, KEPS, 1/4-20  
 D. Carriage Bolt, 1/4-20 x 3/4  
 E. Locknut, Whiz, 5/16-18  
 F. Capscrew, 5/16-18 x 7/8  
 G. Stone Guard

## Install the Deflector Hinge, Bracket and Deflector

1. Slide the deflector support rod (A, Figure 5) into pivot bracket (B) as shown.
2. Secure the front of the pivot bracket (B) using 5/16-18 x 3/4 carriage bolt and 5/16-18 nut (F).
3. **38" Mowers** - Secure the back of pivot bracket (B) and support (G) using 5/16-18 x 3/4 carriage bolt and 5/16-18 nut (F).  
**44" and 50" Mowers** - Secure the back of pivot bracket (B) and support (G) using 5/16-18 x 7/8 capscrew, 5/16 washer (E) and 5/16-18 nut (F).
4. Drill four 13/64" holes from the bottom of the deflector (A, Figure 6) at the pre-molded drill hole locations (E).
5. Attach the deflector (A) to the rod (D) using the #10-24 screws (B) and #10-24 nuts (C).

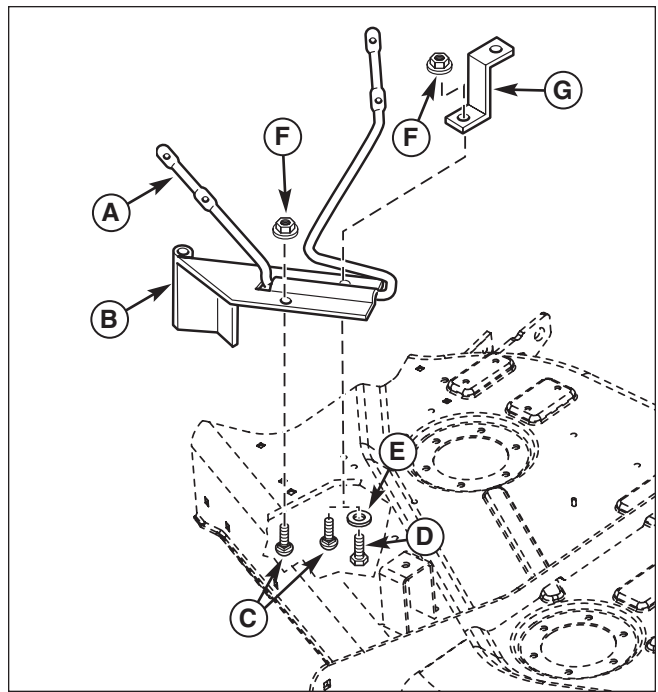


Figure 5. Install Deflector Hinge and Bracket

- A. Deflector Support Rod
- B. Pivot Bracket
- C. Carriage Bolts, 5/16-18 x 3/4
- D. Capscrew, 5/16-18 x 7/8
- E. Washer, Flat, 5/16
- F. Nut, Whizlock, 5/16-18
- G. Support, Belt Cover

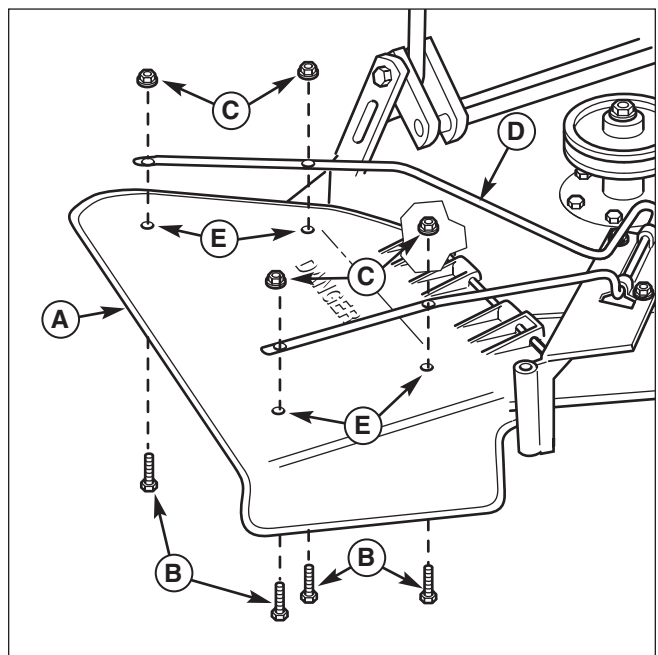


Figure 6. Install Deflector

- A. Deflector
- B. Screws, Phillips, #10-24 x 3/4
- C. Nuts, Nylock, #10-24
- D. Rod, Deflector
- E. 13/64" Hole Locations

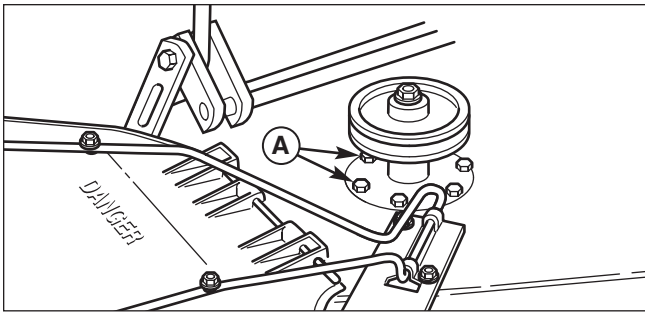


Figure 7. Discard Taptite Screws  
A. Taptite Screws

### Install Idler Assembly and Belt Guide

1. Remove and discard the two taptite screws (A, Figure 7) from the locations shown.
2. Check that the idler assembly stack-up is correct for your application. See Figure 8. If not follow the descriptions to make the corrections.
3. Install 5/16-18 x 7/8 capscrews (C, Figure 9) through the mower deck and arbor as shown. Tighten capscrews.
4. Install the idler assembly (A) to the mower deck using 5/16-18 x 7/8 capscrews (C) and 5/16-18 nuts. The belt guide should be positioned as shown.
5. **44" and 50" Mowers** - Remove and discard the taptite screw in existing hole (F, Figure 10) if unit has roller bars.
6. **44" and 50" Mowers** - Install wire belt guide (A, Figure 10), spacer (E) washers (D), washer (C) and capscrew (B) as shown.

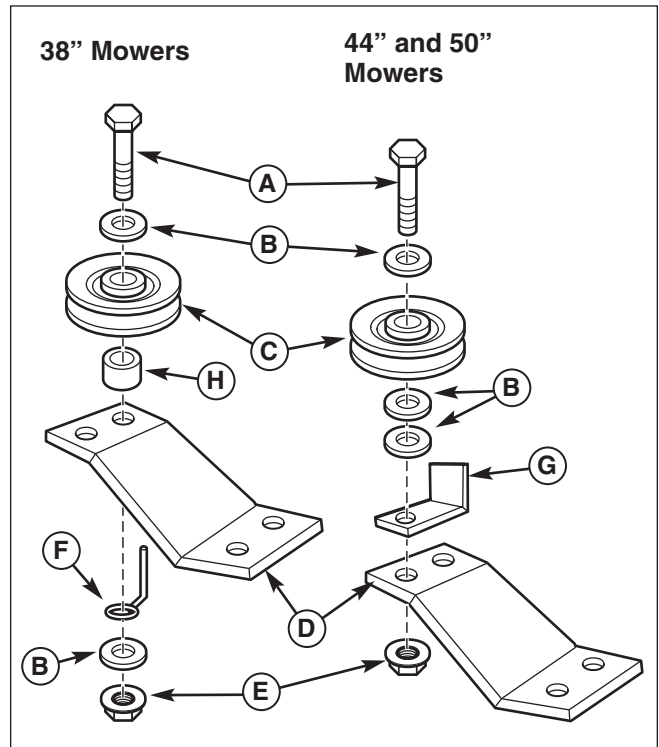


Figure 8. Idler Assembly Stack-Up  
A. Capscrew, 3/8-16 x 2  
B. Washer(s), 3/8  
C. Pulley, Idler, 2-3/4  
D. Idler Bracket  
E. Nut, Whiz Lock, 3/8-16  
F. Belt Guide, Wire, 38" Mowers  
G. Belt Guide, Flat, 44" and 50" Mowers  
H. Spacer

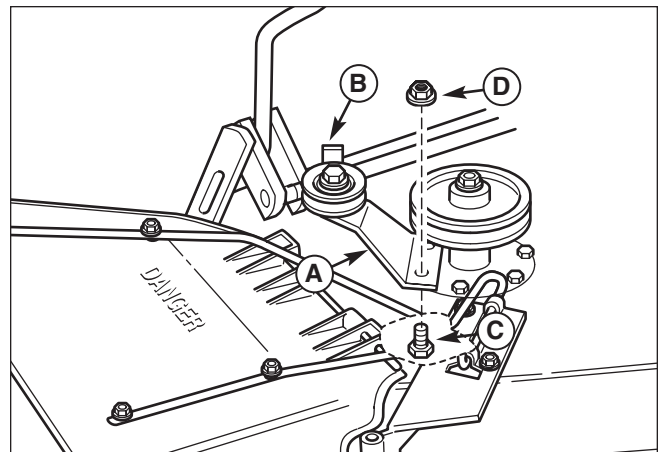


Figure 9. Install Idler Assembly  
A. Idler Assembly  
B. Belt Guide  
C. Capscrew, 5/16-18 x 7/8  
D. Nut, Whizlock, 5/16-18

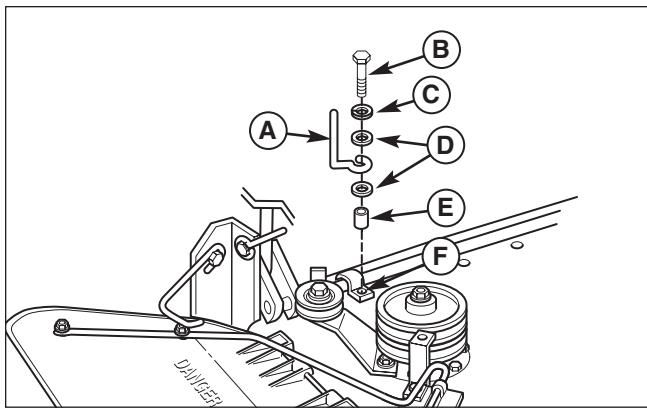


Figure 10. Install Wire Belt Guide 44" & 50" Mower Deck

- A. Wire Belt Guide
- B. Capscrew, 5/16-18 x 1-1/2
- C. Lockwasher, 5/16
- D. Washers, Flat, 5/16
- E. Spacer
- F. Existing Hole

## Install the Turbo Drive Pulley

1. Remove the arbor drive belt from the right side arbor pulley.
2. Remove and discard locknut (A, Figure 11), and spring washers (B). Retain pulley (C) and spacer (D).
3. Install new spacer (E, Figure 12), turbo drive pulley (C, 5" for 38" mowers or D, 4-5/16 for 44" & 50" mowers), and spring washer (B) align the notches in the pulleys with the ridges in the spacers. Torque the sleeve nut to 55-70 ft. lbs.
4. Install the arbor drive belt from the right side arbor pulley.

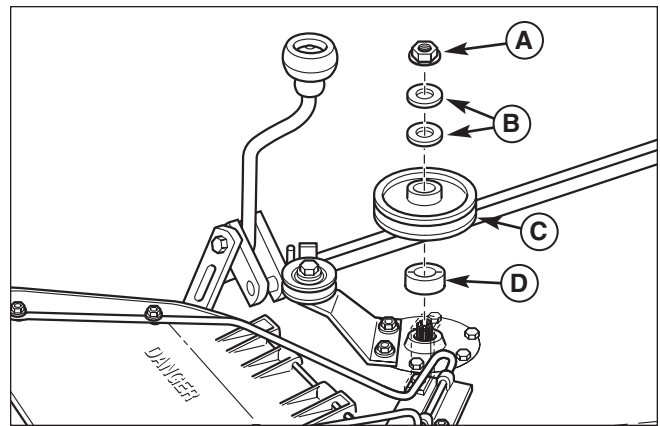


Figure 11. Remove Hardware

- A. Locknut
- B. Spring Washers
- C. Pulley
- D. Spacer

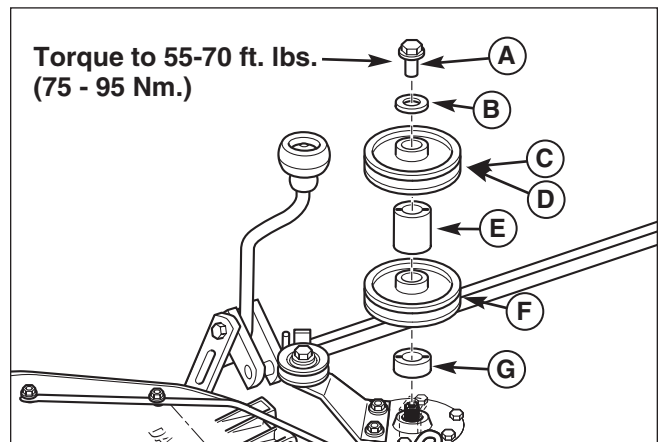


Figure 12. Install Turbo Drive Pulley

- A. Sleeve Nut (New)
- B. Spring Washer (New)
- C. Turbo Drive Pulley, 5" for 38" Mowers (New)
- D. Turbo Drive Pulley, 4-5/16" for 44" & 50" Mowers (New)
- E. Spacer (New)
- F. Pulley (Existing)
- G. Spacer (Existing)

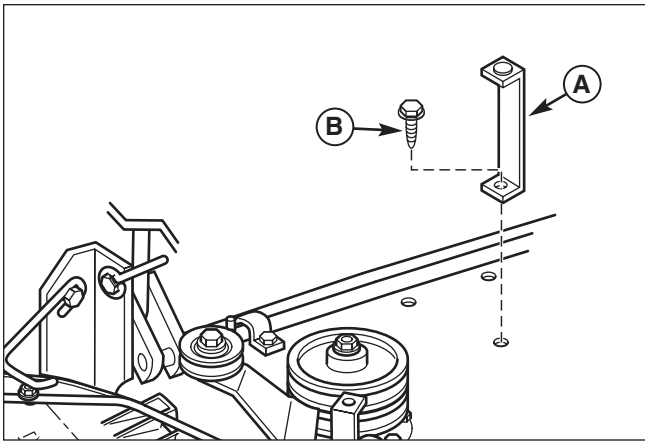


Figure 13. Install Up-Stop  
 A. Up-Stop  
 B. Cap screw, Taptite, 5/16-18 x 5/8

### Install Up-Stop - 38" Mowers

1. Install the up-stop (A, Figure 13) securing with 5/16-18 x 5/8 cap screw (B) as shown.

### Install Deflector Latch - 38"

Note: The 44" & 50" deflector latch is typically per assembled and attached to the deflector bracket.

Check that the deflector latch stack-up is correct. See Figure 14. If necessary revise stack-up as follows:

**44" and 50" Mowers** - Insert 5/16-18 x 2-1/2 cap screw (H) into bracket (F). Install 5/16 washer (C), spring latch (E), 5/16-18 nut (D), 5/16 washer, 5/16-18 wingnut (B) and 5/16 nylock nut (A) onto cap screw (H) as shown.

**38" Mowers** - Slide 5/16 washer (C), spring latch (E) onto 5/16-18 x 2-1/2 cap screw (H). Install bracket (G) 5/16-18 nut (D), 5/16 washer, 5/16-18 wingnut (B) and 5/16 nylock nut (A) onto cap screw (H) as shown to make deflector latch assembly.

1. Install the deflector latch assembly (A, Figure 15) to existing holes (C) securing with 5/16-18 x 5/8 cap screws (B).

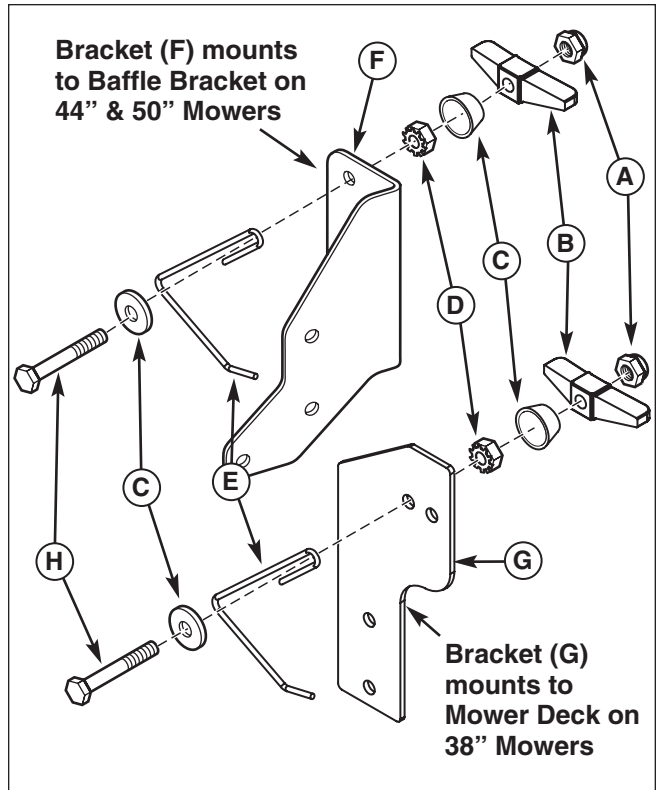


Figure 14. Deflector Latch Stack-Up  
 A. Nut, Nylock 5/16-18  
 B. Wingnut, Special, 5/16-18  
 C. Washers, Flat, 5/16  
 D. Nut, KEPS Lock, 5/16-18  
 E. Spring Latch  
 F. Bracket, Latch, 44" and 50" Mowers  
 G. Bracket, Latch, 38" Mowers  
 H. Cap screw, 5/16-18 x 2-1/2

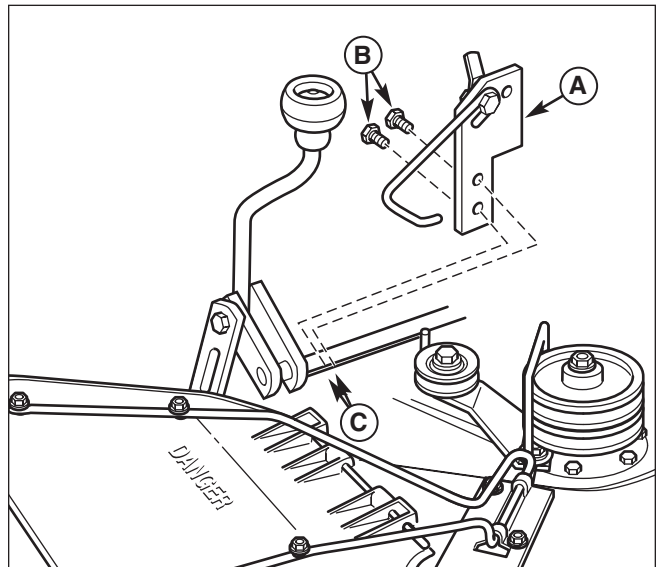


Figure 15. Install Deflector Latch Assembly - 38" Mower  
 A. Deflector Latch Assembly  
 B. Cap screws, Taptite, 5/16-18 x 5/8  
 C. Existing Holes in Mower Deck

## Install Turbo Belt and Mounting Latch

1. Select the correct belt for the mower deck used. See parts listing on page 6-7. Loosen the hardware securing the drive pulley belt guide (B, Figure 17 or 18) and the idler pulley (C).
2. Install the belt as shown in Figure 17 or 18.
3. Tighten the hardware securing the drive pulley belt guide (B, Figure 17 or 18) and the idler pulley (C) so the idler belt guide is within 1/16" (1.59mm) of the belt.
4. Remove and retain hardware (D, Figure 17 or 18). See Figure 16 for hole location. Install the mounting latch (A, Figure 17 or 18) reusing hardware (D). Latch may have to be repositioned later.

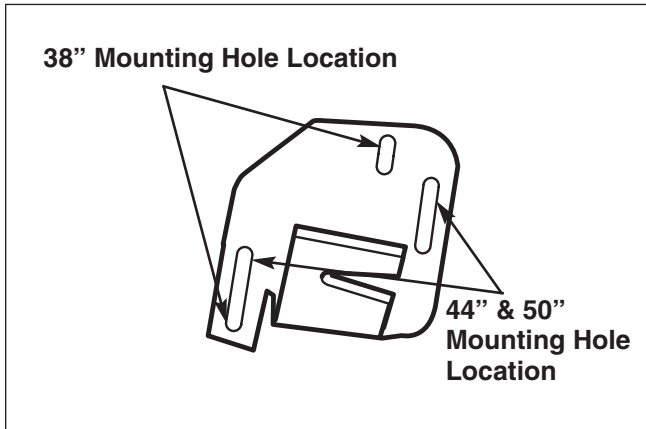


Figure 16. Mounting Latch Holes

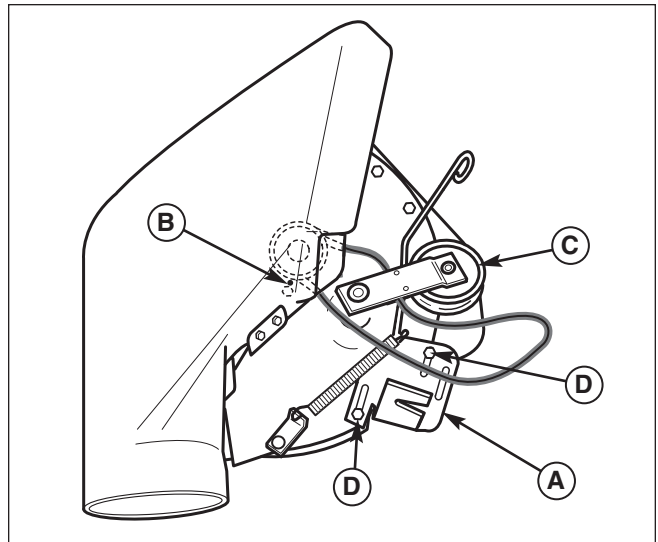


Figure 17. Belt Routing - 38" Models

- A. Mounting Latch
- B. Drive Pulley Belt Guide Hardware
- C. Idler Pulley
- D. Hardware

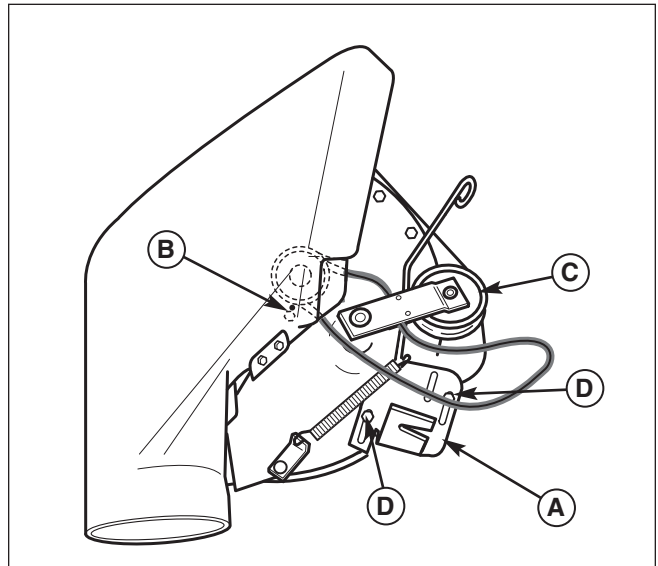


Figure 18. Belt Routing - 44" and 50" Models

- A. Mounting Bracket
- B. Drive Pulley Belt Guide Hardware
- C. Idler Pulley
- D. Hardware

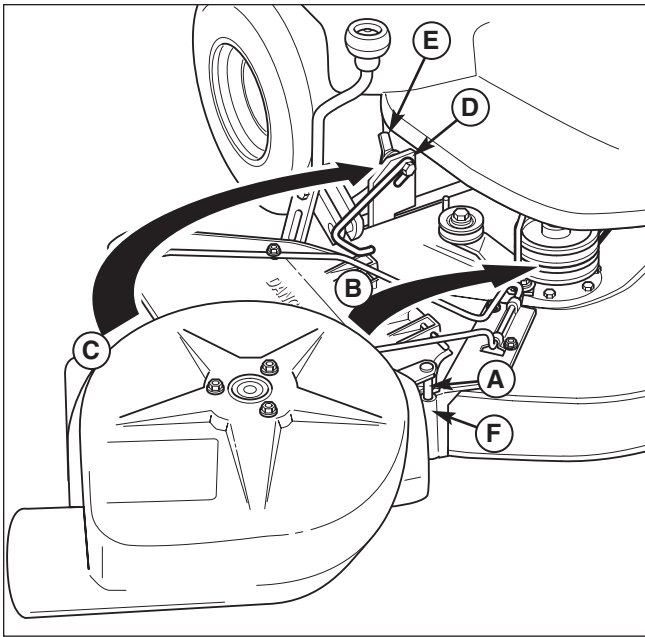


Figure 19. Install Turbo Blower

- A. Pivot Pin
- B. Deflector
- C. Turbo
- D. Anchor Bracket
- E. Wingnut
- F. Pivot Bracket

### Install Turbo, Belt and Roller

1. Place the mower deck in the highest cut position.
2. Slide the pivot pin (A, Figure 19) into pivot bracket (F).
3. Raise the deflector (B).
4. Rotate the turbo (C) and “latch” the slot in the turbo housing over and onto the anchor bracket (D). Slot in mounting latch (A, gure 17 & 18) to be around outside nut. If not - reposition mounting latch on turbo. Tighten the wingnut (E) and cupwasher to secure turbo (C).
5. Attach the mower drive pulley to the mower deck drive pulley (B, Figure 20).
6. Pull back (away from deck) on belt tension lever (C).
7. Install the turbo drive belt on pulleys as shown and release the belt tension lever (C).
8. **Models With Rollers** - Remove and discard the pushnut (B, Figure 21) and roller (A) from the right side of mower deck as shown.
9. **Models With Rollers** - Install the roller (A, Figure 22) and 5/8 pushnut (B) from the right side of mower deck as shown.

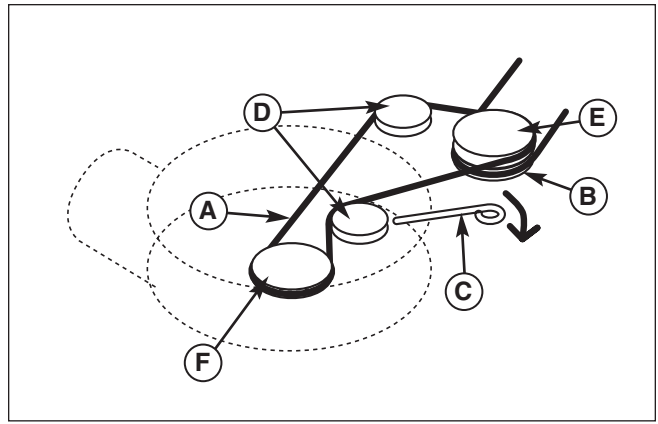


Figure 20. Turbo Belt Routing

- A. Turbo Drive Belt
- B. Mower Deck Drive Pulley
- C. Belt Tension Lever
- D. Idler Pulleys
- E. Mower Deck Turbo Drive Pulley
- F. Turbo Drive Pulley

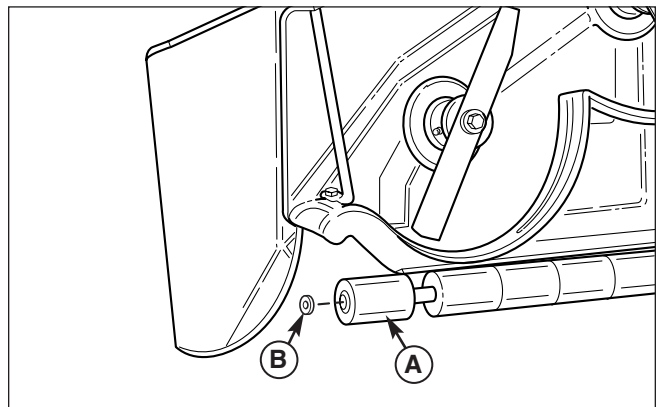


Figure 21. Remove Right Side Pushnut and Roller

- A. Roller, Hollow
- B. Pushnut, 5/8

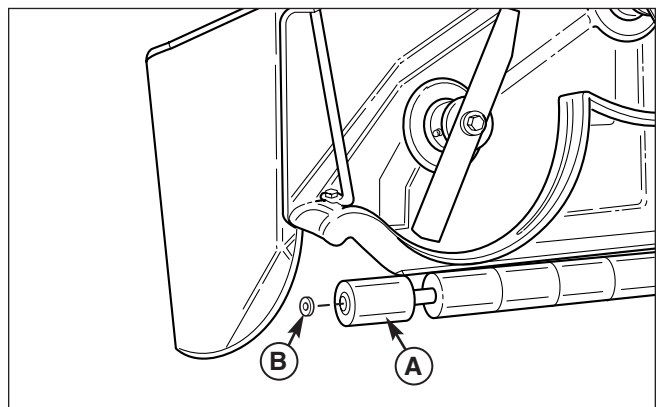


Figure 22. Install Right Side Pushnut and Roller

- A. Roller, Solid
- B. Pushnut, 5/8

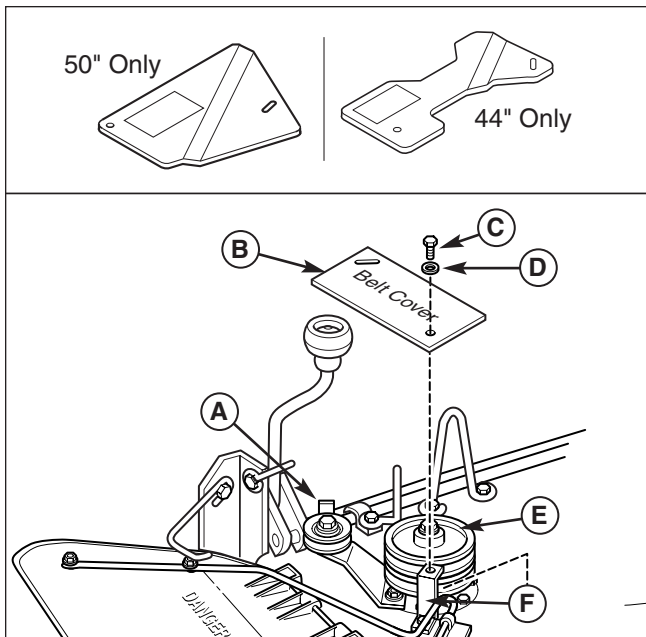


Figure 23. Install Belt Cover Plate

- A. Belt Latch
- B. Belt Cover
- C. 5/16-18 x 1 Capscrew
- D. 5/16 Washer
- E. Support Bracket
- F. 5/16-18, Nut, Nylock

10. **44 and 50" Models** - Attach the belt cover (B, Figure 23) to support bracket (E) securing with 5/16-18 x 1 capscrew (C), washer (D) and 5/16-18 nut.

## **CAUTION**

Before you begin operating the unit with the Turbo attached, be certain you have read all of the safety information in this Operator's Manual, as well as the Operator's Manual for the tractor and any grass catchers or other collection devices used in conjunction with this turbo blower.

### **Install Seal, Cover, tubes and Turbo**

1. Use cover plate (A, Figure 23) as a template to drill six 13/64" holes (C) on grass catcher cover (B) as shown.
2. Inside grass catcher cover (B, Figure 25) place seal (D), and cover plate (A). Secure using #10-24 x 3/4 screws (C), and #10-24 locknuts (D).

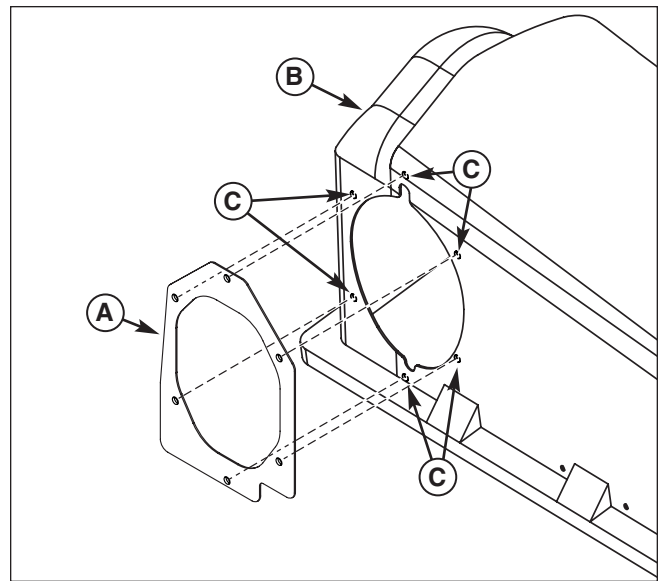


Figure 24. Drill Adapter Plate Holes

- A. Cover Plate
- B. Grass Catcher Cover
- C. New 13/64" Hole Locations

**Assembly**

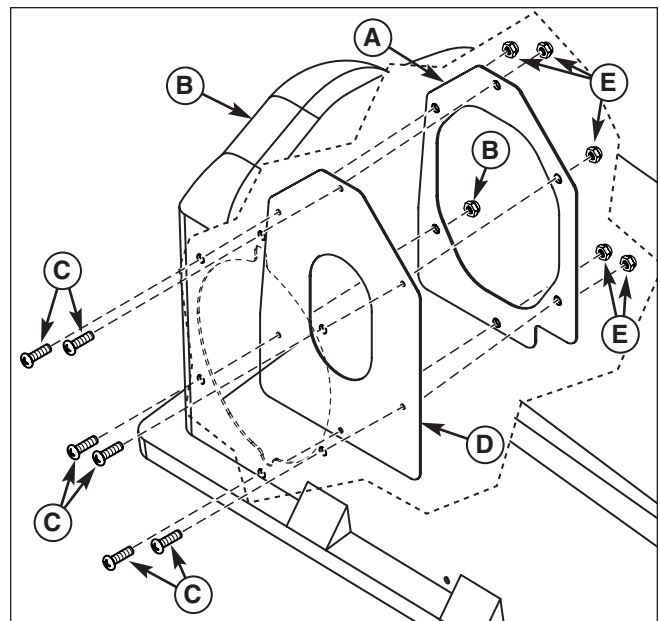


Figure 25. Install Seal and Cover Plate

- A. Cover Plate
- B. Grass Catcher Cover
- C. Screw, Phillips, #10-24 x 3/4
- D. Seal, Rubber
- E. Locknuts, ESNA, #10-24



- Slide upper tube (B, Figure 26) over lower tube (A) secure with #10-24 x 3/4 screw (C), washers (D) and #10-24 locknut (E).

*Note: The grass catcher hitch, channel and cover must be installed according to the Catcher Operator's Manual before proceeding with the next steps.*

- Slide the discharge end of tube assembly (A, Figure 27) through the seal (A). This may require some rotating or turning of the discharge end of tube assembly.
- Slide the intake end of tube assembly (E) over the turbo aligning clip (C) and nut and capscrew (D).
- Lift clip (C) over nut and capscrew to secure tube to turbo.

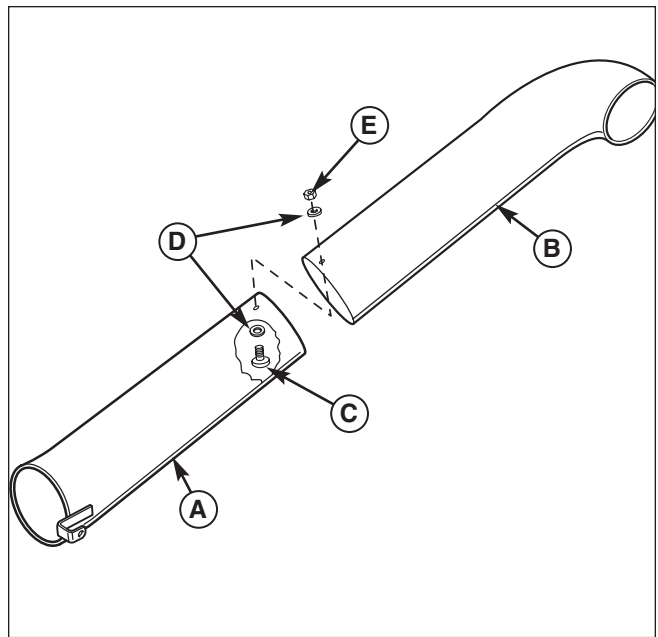


Figure 26. Install Tubes  
 A. Lower Tube  
 B. Upper Tube  
 C. Screw, Phillips, #10-24 x 3/4  
 D. Washer, Flat  
 E. Locknut, ESNA, #10-24

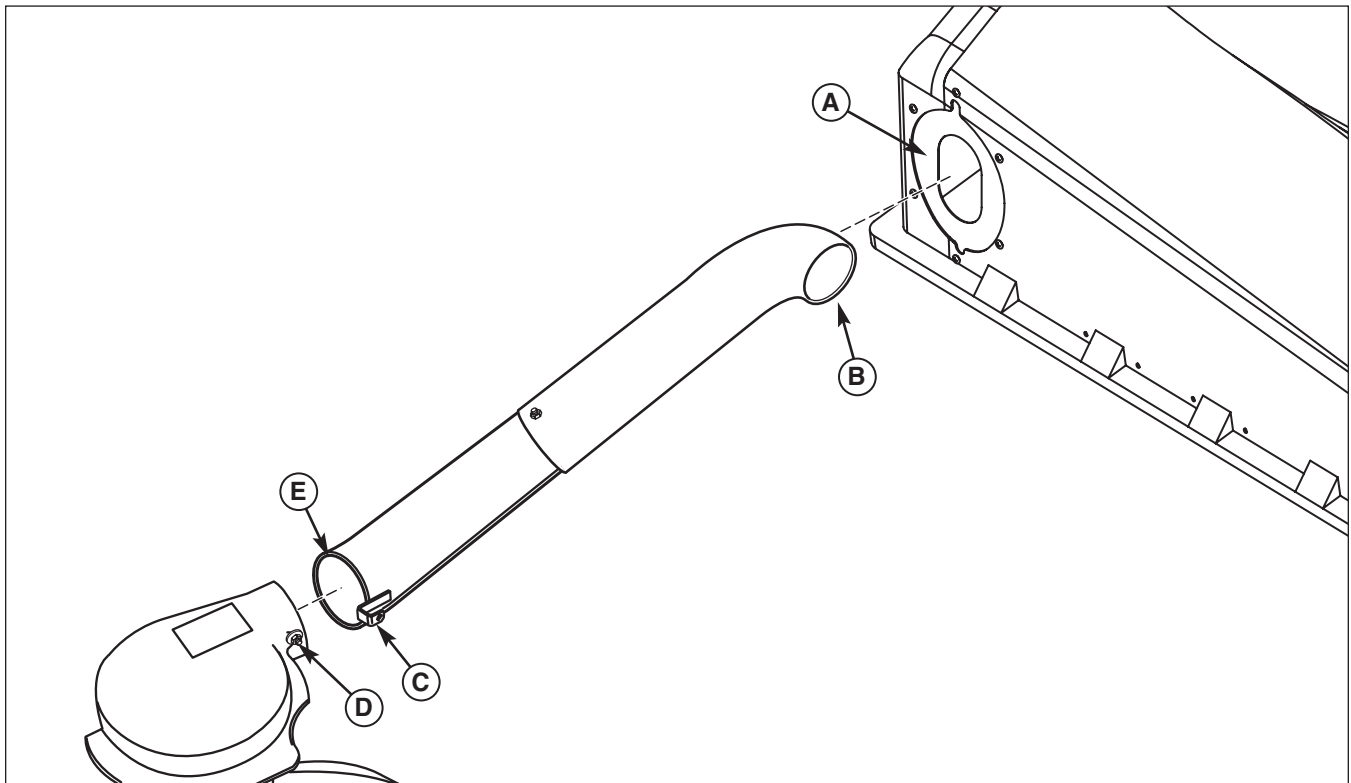


Figure 27. Connect Tube to Hood and Turbo  
 A. Seal  
 B. Discharge end of Tube Assembly  
 C. Clip  
 D. Nut and Capscrew  
 E. Intake end of Tube Assembly

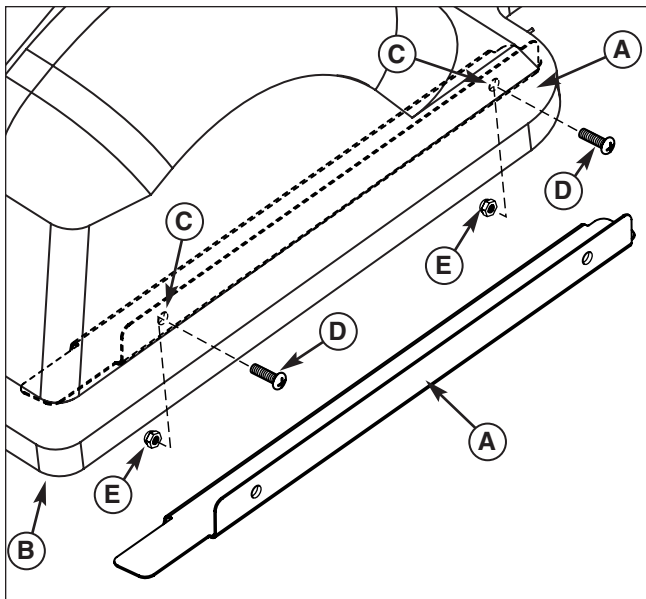


Figure 28. Install Deflector Plate

- A. Deflector Plate
- B. Cover
- C. New 7/32" Holes
- D. Screws, #10-24 x 3/4
- E. Locknuts, #10-24

### Triple Collector - Plate and Edging

1. Hold deflector plate (A, Figure 28) in cover (B) as shown and mark new hole locations using deflector plate holes as a guide.
2. Drill two 7/32" holes in the locations marked in the previous step.
3. Secure deflector plate (A) to cover (B) using #10-24 x 3/4 screws (D) and #10-24 locknuts (E).
4. From the inside of grass catcher slide the thick seal (A, Figure 29) starting at the LH side of the hinge edge (C) to the corner (B) on the cover edge as shown.

### Twin Collectors - Edging

1. From the inside of grass catcher slide the thin seal (A, Figure 30) onto the cover edge (B) starting at the LH side of the hinge edge (D) so that the inside curl (C) is toward the inside of the cover .
2. From the inside of grass catcher slide the thick seal (A, Figure 5) on the cover edge as shown starting at the out side end of the thin seal (B) and continuing around the cover.

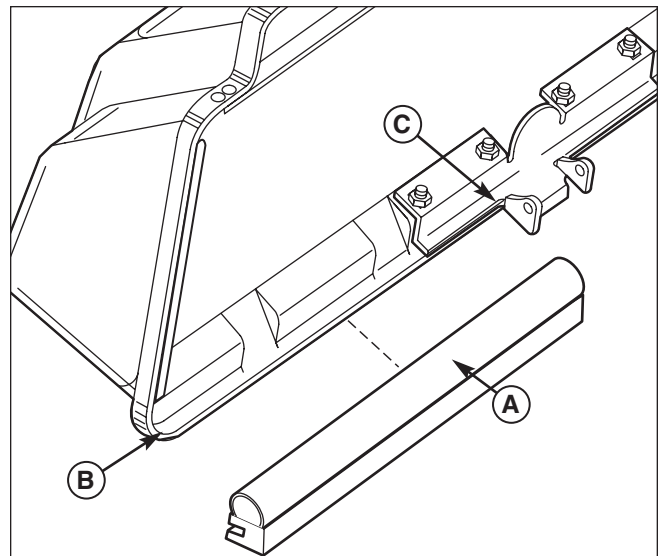


Figure 29. Install Thick Seal

- A. Thick Seal
- B. Corner, LH
- C. Hinge Edge

Assembly

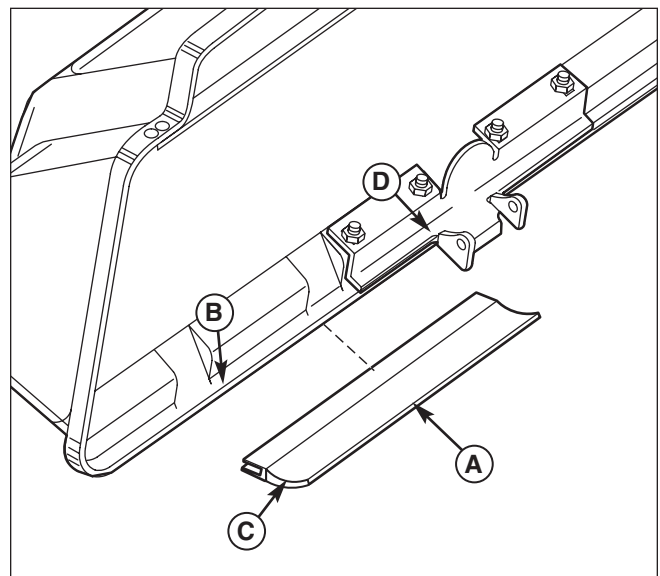


Figure 30. Install Thin Edging

- A. Thin Edging
- B. Cover Edge, LH
- C. Inside Curl
- D. Hinge Edge

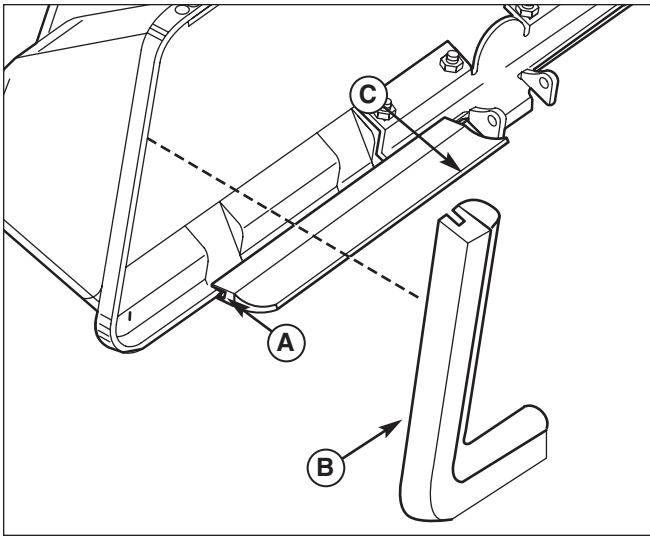


Figure 31. Install Thick Seal  
 A. Thick Seal  
 B. Edge of Thin Seal

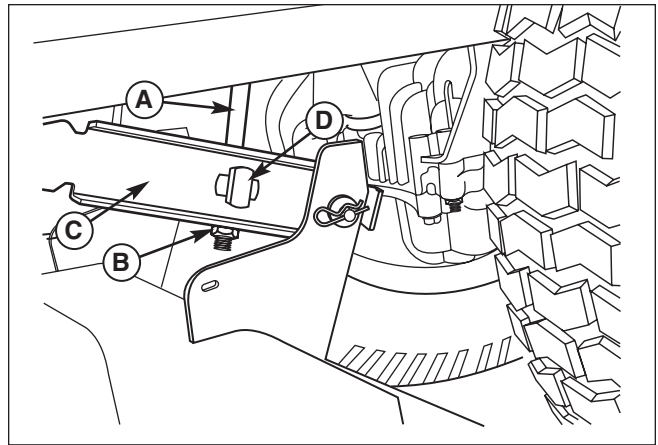


Figure 32. Remove Lift Rod  
 A. Lift Rod  
 B. Lock Nut  
 C. Lift Bar  
 D. Special Nut

### Snapper Models

1. Place several blocks of wood under the mower deck so that there is slack in the mower lift when the mower is in the lowest position.
2. Remove the hair pin (F, Figure 33) from lift rod (A).
3. Remove the lift rod (A, Figure 32 & 33) from lift bar (C).
4. Remove the locknut (B, Figure 33), spacer (E).
5. Mark the location of the special nut (D) on lift rod (A) and remove nut.

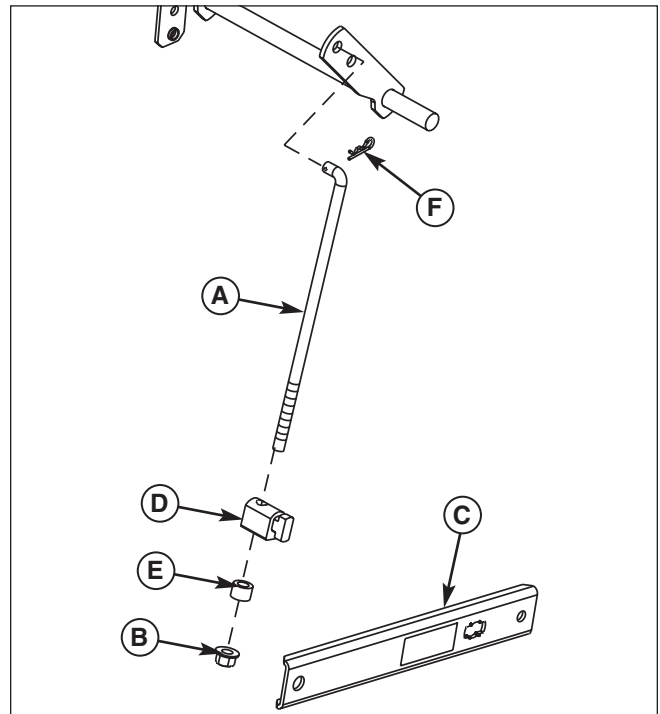


Figure 33. Remove Lift Rod  
 A. Lift Rod  
 B. Locknut  
 C. Lift Bar  
 D. Special Nut  
 E. Spacer  
 F. Hair Pin

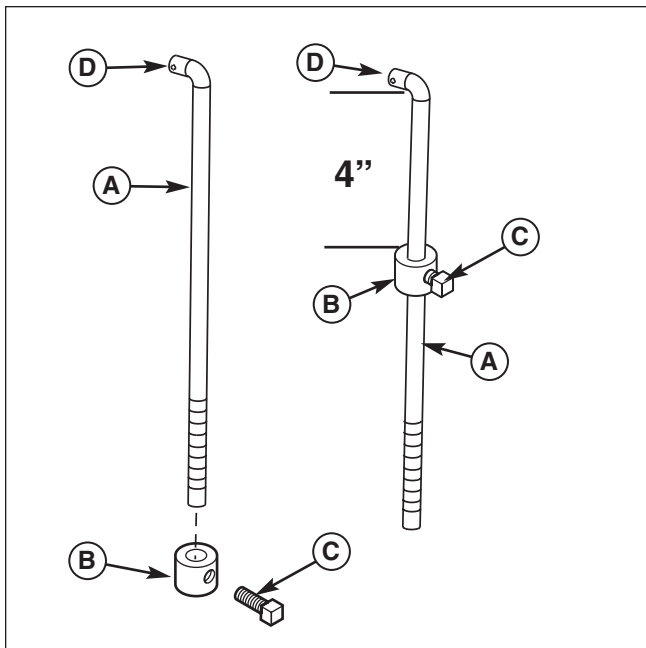


Figure 34. Install Set Collar

- A. Lift Rod
- B. Set Collar
- C. Set Screw
- D. Rod Tip

6. Slide set collar (B, Figure 34) onto lift rod (A). Secure set collar (B) so that the top of the collar is 4" from the bottom of the rod tip (D) and that the rod tip and set screw point in opposite directions.
7. Install the spring (G, Figure 35) and special nut (D) in the same location that was marked in step 5.
8. Install the spacer (E) and locknut (B).
9. Connect special nut (D) to lift bar (C).
10. Reinstall the rod (A) to lift (H) and secure with hair pin (F).
11. Re-level mower deck following procedures in the Operator's Manual see MOWER DECK LEVELING.

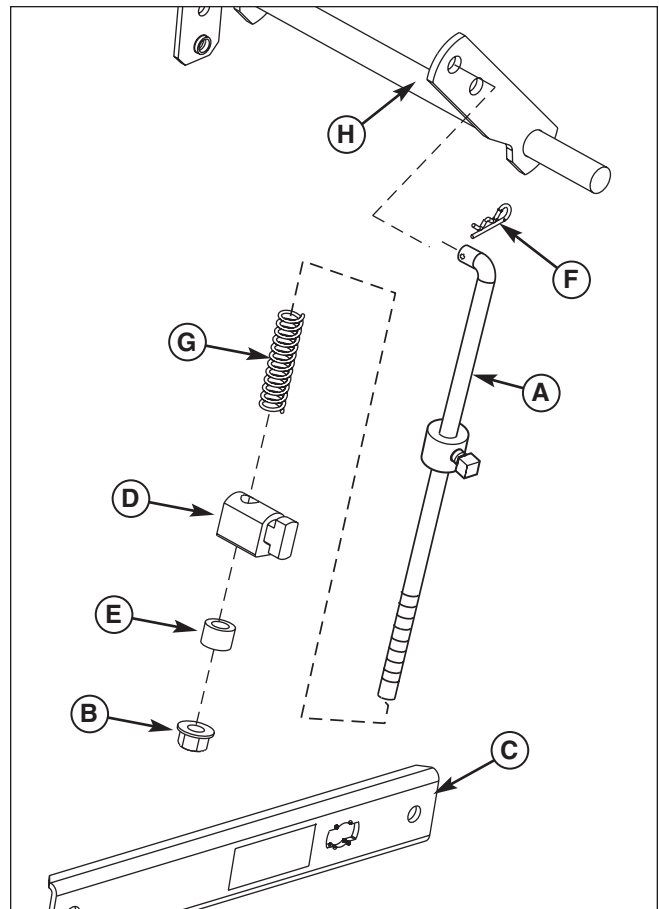


Figure 35. Install Lift Rod

- A. Lift Rod
- B. Locknut
- C. Lift Bar
- D. Special Nut
- E. Spacer
- F. Hair Pin
- G. Spring
- H. Lift

## Normal Removal & Installation

### Turbo & Tube Installation

*Note: The grass catcher hitch, channel and cover must be installed according to the Catcher Operator's Manual before proceeding with the next steps.*

1. Place the mower deck in the highest cut position.
2. Slide the pivot pin (A, Figure 36) into pivot bracket (F).
3. Raise the deflector (B).
4. Rotate the turbo (C) and "latch" the slot in the turbo housing over and onto the anchor bracket (D). Tighten the wingnut (E) to secure turbo (C).
5. Pull back (away from deck) on belt tension lever (C, Figure 37).
6. Install the turbo drive belt on pulleys as shown and release the belt tension lever (C).
7. Follow the Bagger Operator's Manual for installation of catcher components.
8. Slide the discharge end of tube assembly (A, Figure 30) through the seal (A). This may require some rotating or turning of the discharge end of tube assembly.
9. Slide the intake end of tube assembly (E) over the turbo aligning clip (C) and nut and capscrew (D).
10. Lift clip (C) over nut and capscrew (D) to secure tube to turbo.

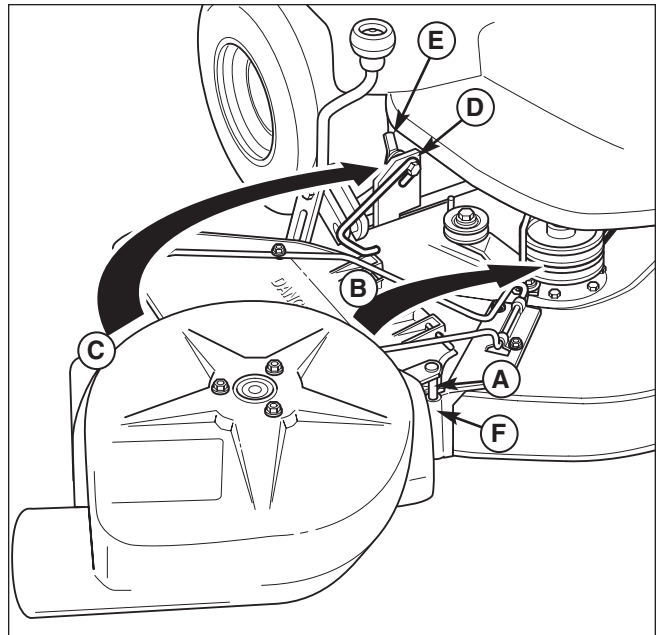


Figure 36. Install Turbo Blower

- A. Pivot Pin
- B. Deflector
- C. Turbo
- D. Anchor Bracket
- E. Wingnut
- F. Pivot Bracket

## CAUTION

Before you begin operating the unit with the Turbo attached, be certain you have read all of the safety information in this Operator's Manual, as well as the Operator's Manual for the tractor and any grass catchers or other collection devices used in conjunction with this turbo blower.

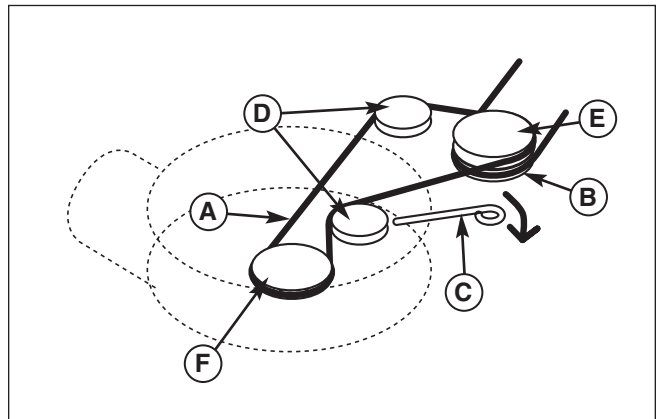


Figure 37. Turbo Belt Routing

- A. Turbo Drive Belt
- B. Mower Deck Drive Pulley
- C. Belt Tension Lever
- D. Idler Pulleys
- E. Mower Deck Turbo Drive Pulley
- F. Turbo Drive Pulley

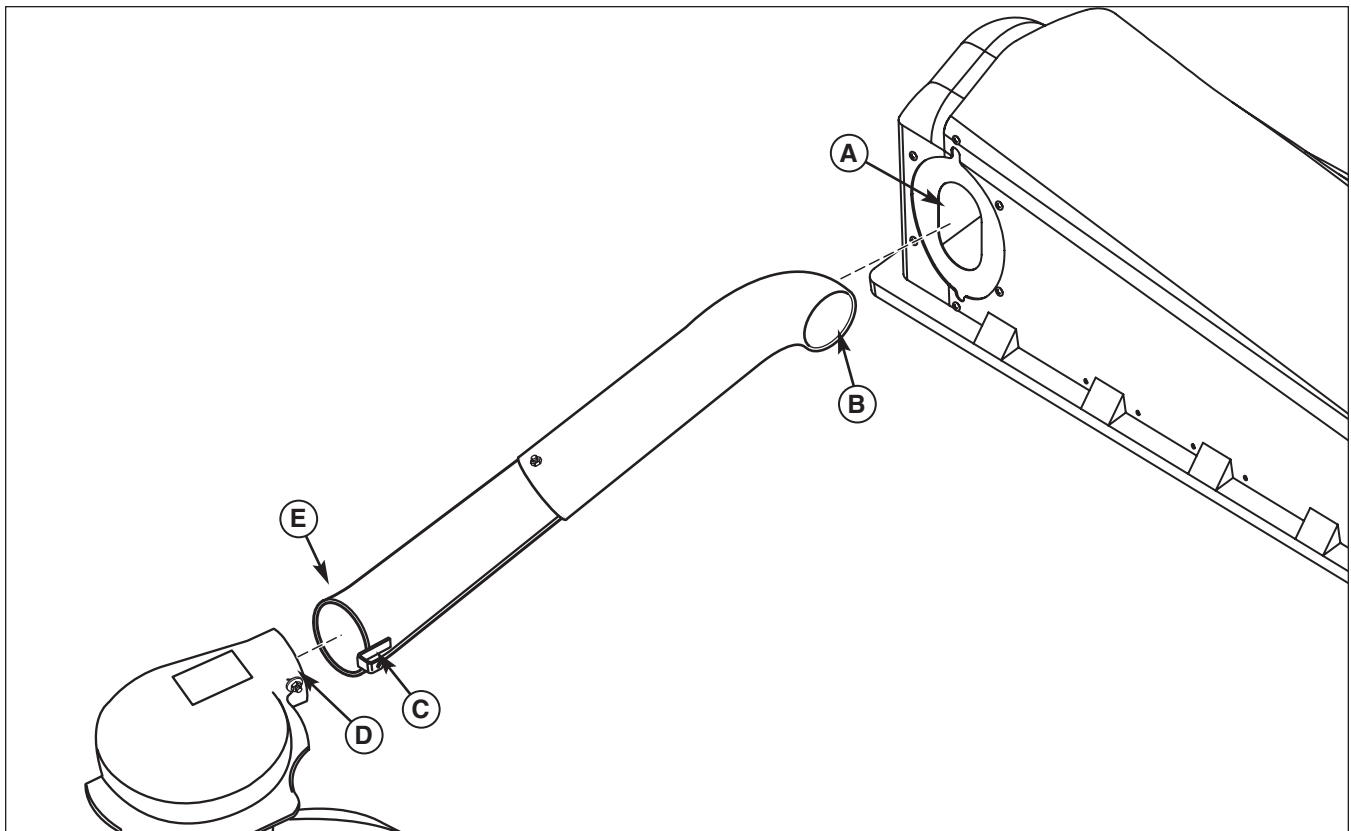


Figure 38. Connect Tube to Hood and Turbo

- A. Seal
- B. Discharge end of Tube Assembly
- C. Clip
- D. Nut and Capscrew
- E. Intake end of Tube Assembly

**⚠ WARNING**

**OPERATION WITHOUT TURBO, TUBE AND BAGGER**

For operation without turbo, tube and bagger, the mower deflector **MUST** be properly installed in the down position and retained by the spring latch.

**Turbo & Tube Removal**

1. Place the mower deck in the highest cut position.
2. Lift clip (C, Figure 38) over nut and capscrew and disconnect turbo from intake end of tube assembly.
3. Slide the intake end of tube assembly (E) out of seal (A) and remove tube assembly.
4. Place the mower deck in the highest cut position.
5. Pull belt tension lever (C, Figure 37) away from the discharge opening to remove tension from the belt. Remove turbo drive belt.
6. Loosen wing nut (E, Figure 38) and lift deflector (B). Rotate turbo (C) away from mower deck and remove.
7. Follow the Bagger Operator's Manual for removal of catcher components.

Copyright © 2006 Simplicity Mfg. Inc.,  
Port Washington, WI, USA. All rights reserved.

The Simplicity logo is a registered trademark of  
Simplicity Mfg. Inc., Port Washington, WI, USA.

Contact Information:

Simplicity Mfg. Inc.

P.O. Box 997

500 N. Spring St.

Port Washington, WI 53074-0997

[www.SimplicityMfg.com](http://www.SimplicityMfg.com)



MANUFACTURING, INC.  
500 N Spring Street / PO Box 997  
Port Washington, WI 53074-0997

[www.SimplicityMfg.com](http://www.SimplicityMfg.com)



500 N Spring Street / PO Box 997  
Port Washington, WI 53074-0997

[www.MasseyLawn.com](http://www.MasseyLawn.com)



500 N Spring Street / PO Box 997  
Port Washington, WI 53074-0997

[AGCOLawn.com](http://AGCOLawn.com)



Simplicity Mfg. Inc. - Snapper Products  
535 Macon Street  
McDonough, GA 30253

[www.Snapper.com](http://www.Snapper.com)

