

Attachment Illustrated Parts List



Attachment

Mfg. No.	Description
1694874	42" Two-Stage Snowthrower

Simplicity

MANUFACTURING, INC.
500 N. Spring Street / PO Box 997
Port Washington, WI 53074-0997 USA

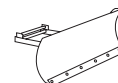
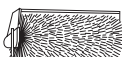
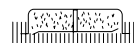
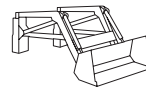
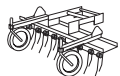
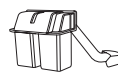
www.simplicitymfg.com

© Copyright 2007 Simplicity Manufacturing, Inc. All Rights Reserved. Printed In USA.

Part No.: 1734833

Rev. 04/2007

TP 400-4554-00-AT-SMA

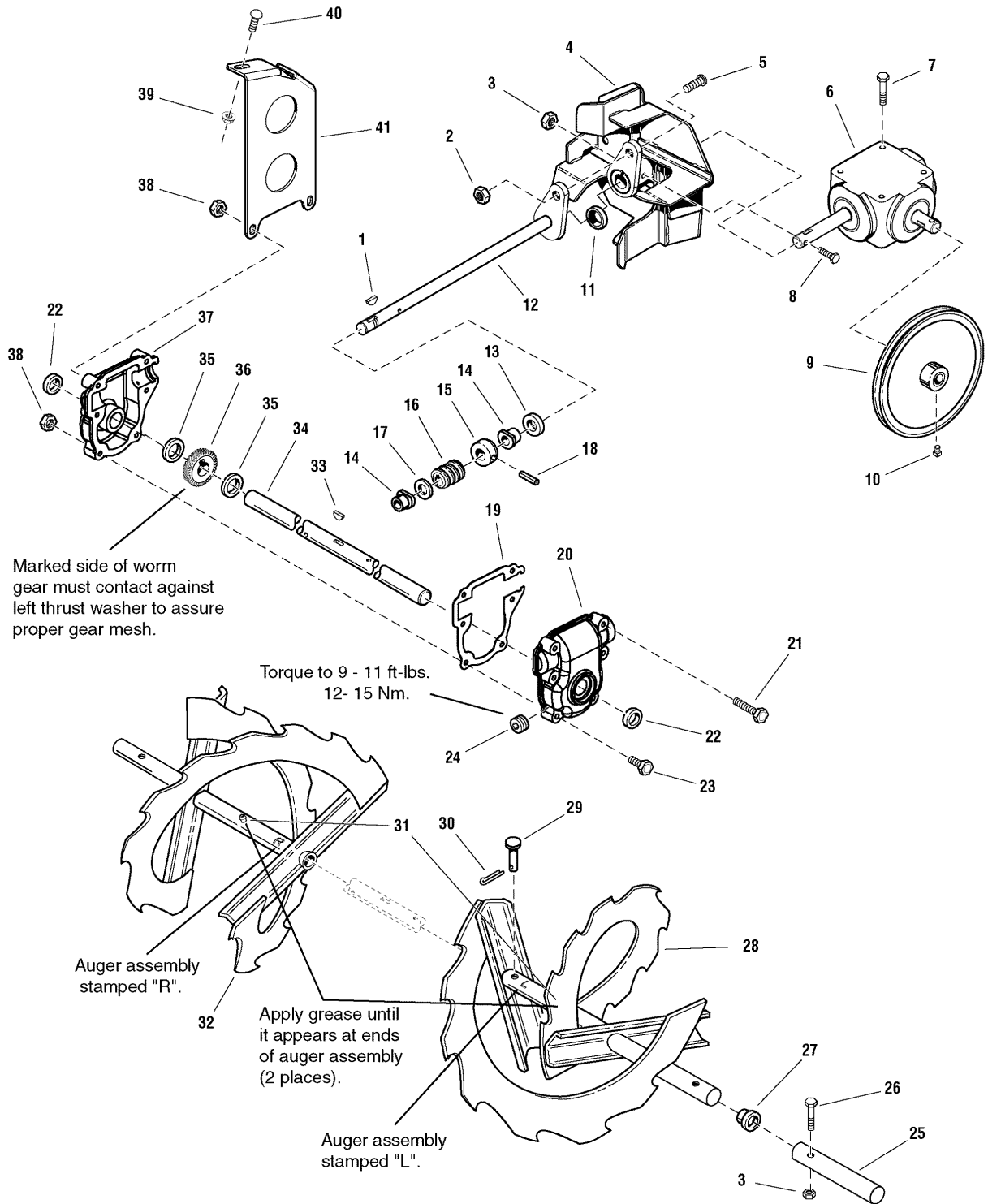


PRODUCT COMPONENTS	PAGES
Auger Drive Group	4
Auger Housing & Chute Group	6
Decals Group	10
Torque Specification Chart	Inside Back Cover

Auger Drive Group

987160

NOTE: Unless noted otherwise, use the standard hardware torque specification chart.



The above parts group applies to the following Mfg. Nos.:

1694874 - 42" Two-Stage Snowthrower

Auger Drive Group

REF NO	PART NO.	QTY.	DESCRIPTION
1	2818312SM	1	KEY, Woodruff, 47/250 x 5/8
2	1919438SM	1	NUT, Hex Nylock, 5/16-18
3	1920397SM	3	NUT, Hex Lock ESNA Light, 1/4-20NC-3B
4	1723994ASM	1	IMPELLER ASSEMBLY
5	1931335SM	1	CARRIAGE BOLT, 5/16-18 x 1
6	1723950SM	1	GEARBOX ASSEMBLY
7	1933260SM	4	CAPSCREW, Whiz, 3/8-16 x 3/4
8	1960506SM	1	CAPSCREW, 1/4-20 x 1.88
9	1724003SM	1	PULLEY, Input
10	1928721SM	2	SCREW, Set Square Head Cup Point, 5/16-18 x 1/2 G8
11	1723997SM	1	BUSHING
12	1723995SM	1	SHAFT ASSEMBLY, Worm
13	1612093SM	1	SEAL, Oil 1/4" Thick
14	1612149SM	2	BUSHING, 377/500 ID x 1-1/10 OD x 1-1/100 LG Powderdered Metal
15	1612127SM	1	COLLAR, Thrust 3/4 LG
16	1612142SM	1	GEAR, Worm 1-3/8 LG
17	2168111SM	1	WASHER, Thrust
18	2836098SM	1	PIN, Drive Lock Type A 3/16 x 1-1/2
19	1612124SM	1	GASKET, Gear Case
20	1612136SM	1	CASE, Gear L.H.
21	1923282SM	2	CAPSCREW, Hex Head, 1/4-20 x 2-1/2 G5
22	2118118SM	2	SEAL, Oil, 1/4" Thick
23	1960346SM	4	CAPSCREW, Hex Head, 1/4-20 x 2-1/4 G5
24	1668971SM	1	FITTING, Pipe Plug, Square Head
25	1723931SM	2	SHAFT, E-Coat, 5 LG
26	1921962SM	2	CAPSCREW, Hex Head, 1/4-20 x 1-3/4 G5
27	1709894SM	2	BUSHING, Plastic
28	1731325SM	1	AUGER ASSEMBLY, L.H.
29	1668344SM	2	PIN, Flat Head Drilled
30	1918447SM	2	PIN, Cotter 47/50 x 3/4
31	2821133SM	2	FITTING, Lube 1/4 Drive, No Check Ball
32	1731326SM	1	AUGER ASSEMBLY, R.H.
33	2830246SM	1	KEY, Woodruff 1/4 x 3/4
34	1731916SM	1	SHAFT, 16 LG Auger 3 Holes
35	2118315SM	2	WASHER, Thrust
36	1612141SM	1	GEAR, Worm 7/8 LG
37	1612137SM	1	CASE, Gear R.H.
38	1930642SM	8	NUT, Hex Flange, 1/4-20 Toplock Small
39	1931277SM	2	NUT, Hex Flange, 5/16-18, Whiz Lock Small
40	1931333SM	2	CARRIAGE BOLT, 5/16-18 x 3/4 G5
41	1723922ASM	1	SUPPORT, Gear Box 10GA

Footnotes

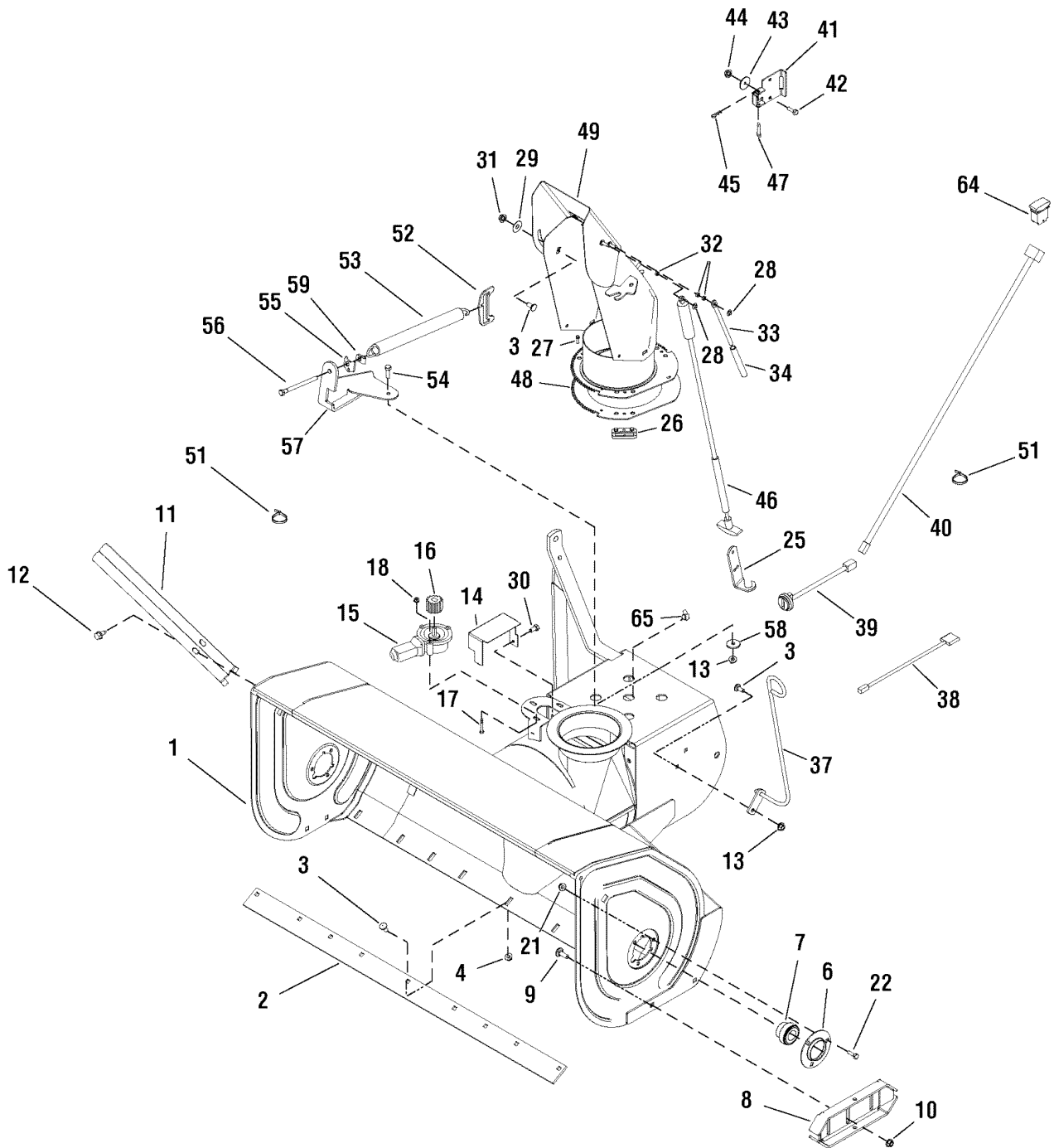
The above parts group applies to the following Mfg. Nos.:

1694874 - 42" Two-Stage Snowthrower

Auger Housing & Chute Group

987049

NOTE: Unless noted otherwise,
use the standard hardware torque
specification chart.



The above parts group applies to the following Mfg. Nos.:
1694874 - 42" Two-Stage Snowthrower

Auger Housing & Chute Group

REF NO	PART NO.	QTY.	DESCRIPTION
1	1732272ASM	1	AUGER HOUSING ASSEMBLY, 42"
2	1723986ASM	1	SCRAPER BAR, 42"
3	1931333SM	11	BOLT, Carriage, 5/16 - 18 x 3/4
4	1935048SM	9	LOCKNUT, Flange, 5/16 - 18
6	2172278ASM	4	BEARING, Flange
7	1733105SM	2	BEARING, Cartridge
8	1725747ASM	2	SKID SHOE
9	1960702SM	4	BOLT, Carriage, 3/8 - 16 x 1
10	1960687SM	4	NUT, ESNA Flange, 3/8 - 16
11	1729642ASM	2	DRIFT CUTTERS
12	1664847SM	2	SCREW, Hex Washer Head Taptite, 5/16 - 18 x 3/4
13	1960684SM	2	NUT, Keps Washer, 5/16 - 18
14	1733934SM	1	COVER, Gear
15	1728965SM	1	MOTOR, Electric
16	1728967SM	1	GEAR, Pinion
17	2860604SM	3	SCREW, Hex Washer, #10 - 24 x 1-1/4
18	1960745SM	3	NUT, Hex Keps, #10 - 24
21	1931277SM	6	NUT, Hex Flange Whizlock, 5/16 - 18
22	1925205SM	6	SCREW, Hex Head, 5/16 - 18 x .62
25	1726411ASM	1	BRACKET, Cable
26	1666613SM	3	CHUTE RETAINERS
27	1960001SM	3	SCREW, Plastite
28	1960126SM	2	NUT, Push, 1/4
29	2860210SM	1	WASHER, Nylon
30	1929000SM	1	SCREW, Hex Washer Head Taptite, 1/4 - 20 x 3/8
31	1960686SM	1	NUT, Hex Flange ESNA, 5/16 - 18
32	1702219SM	3	SPACER
33	1611945SM	1	ROD, Spring
34	1611939SM	1	SPRING, Compression
37	1717591ASM	1	GUIDE ASSEMBLY, Cable
38	1722735SM	1	HARNESS, Spout Rotator
39	1716987SM	1	HARNESS, Power Outlet
40	1732236SM	1	HARNESS ASSEMBLY, Chute
41	1721590ASM	1	BRACKET, Cable Mount
42	1924009SM	2	CAPSCREW, 1/4 - 20 x 7/8
43	1960151SM	2	WASHER, Special
44	1960685SM	2	NUT, Hex Keps, 1/4 - 20
45	1960221SM	1	HAIRPIN, 1/16
46	1724568SM	1	CABLE ASSEMBLY
47	1668344SM	1	PIN, Flat Head
48	1717477ASM	1	GEAR, Chute
49	1731437SM	1	CHUTE ASSEMBLY
51	2825094SM	1	CABLE TIE
52	1724641ASM	1	SPRING ANCHOR

Footnotes

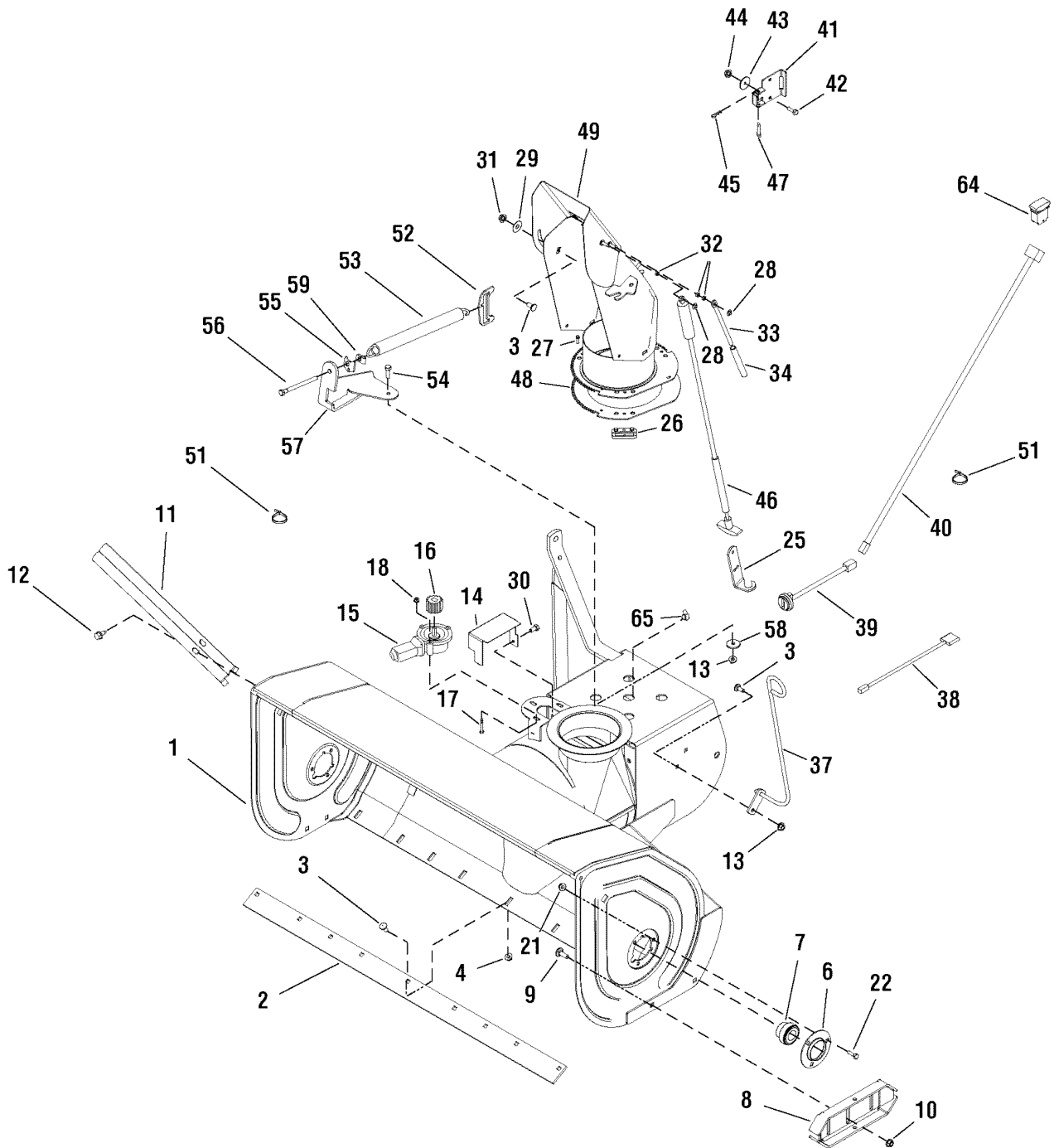
The above parts group applies to the following Mfg. Nos.:

1694874 - 42" Two-Stage Snowthrower

Auger Housing & Chute Group

987049

NOTE: Unless noted otherwise,
use the standard hardware torque
specification chart.



The above parts group applies to the following Mfg. Nos.:
1694874 - 42" Two-Stage Snowthrower

Auger Housing & Chute Group

REF NO	PART NO.	QTY.	DESCRIPTION
56	1722357SM	1	CAPSCREW, 5/16 - 18 x 4-1/2
57	1732127ASM	1	SPRING ANCHOR ASSEMBLY
58	1933468SM	1	WASHER
59	1935255SM	1	NUT, Pushpal, 5/16 - 18
64	1724210SM	1	SWITCH, Chute Control
65	1715956SM	1	CLIP, Wire

Footnotes

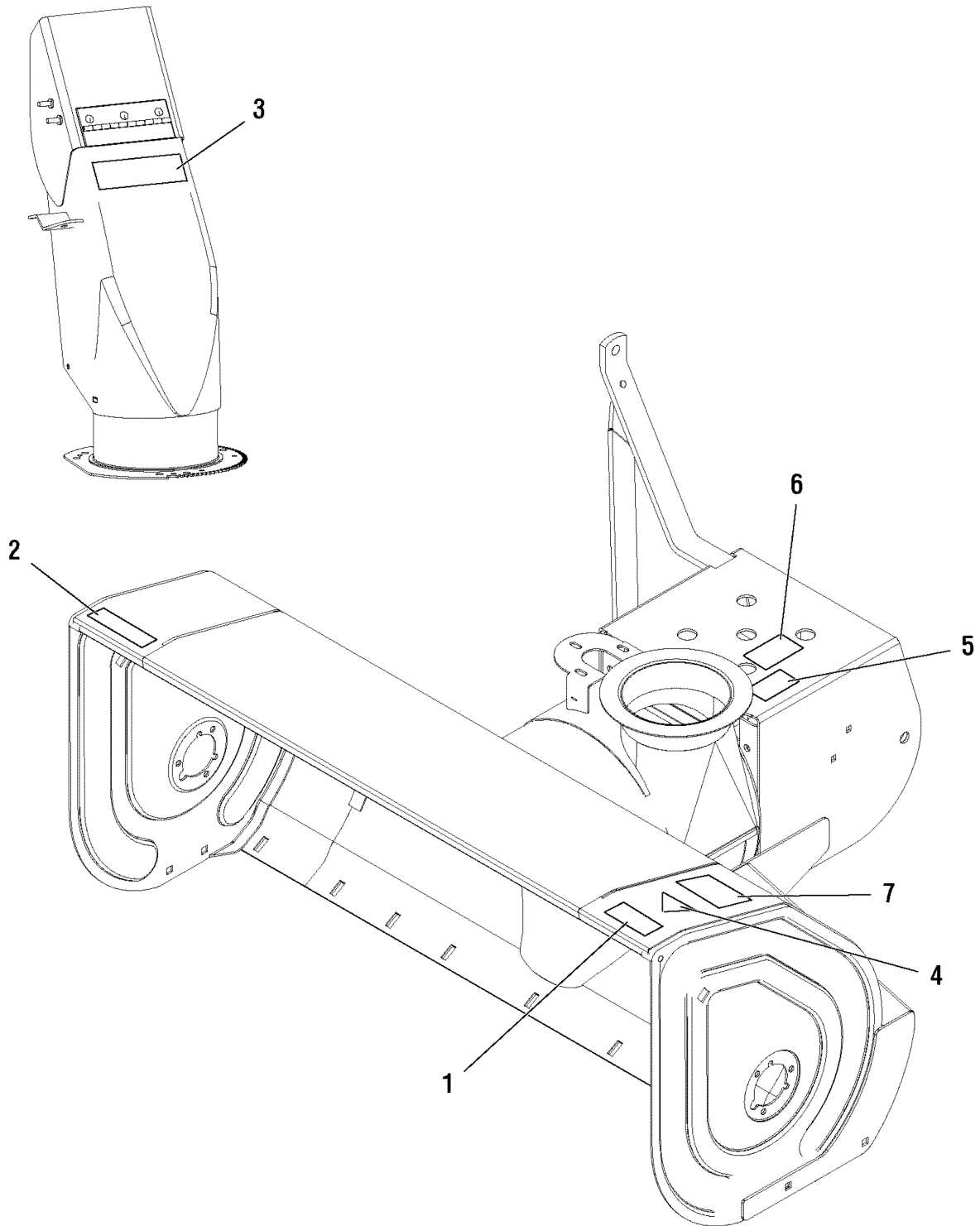
The above parts group applies to the following Mfg. Nos.:

1694874 - 42" Two-Stage Snowthrower

Decals Group

986173

NOTE: Unless noted otherwise,
use the standard hardware torque
specification chart.



The above parts group applies to the following Mfg. Nos.:

1694874 - 42" Two-Stage Snowthrower

Decals Group

REF NO	PART NO.	QTY.	DESCRIPTION
1	1716532SM	1	DECAL, Danger Auger
2	1716531SM	1	DECAL, Caution
3	1722674SM	1	DECAL, Danger Blower
4	*	1	DECAL, OPEI
5	1716540SM	1	DECAL, Caution Weights
6	1716536SM	1	DECAL, Caution
7	*		DECAL, Warranty

Footnotes

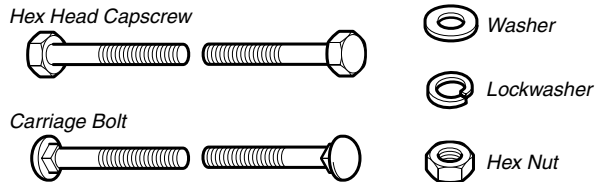
* (Not servicable)

The above parts group applies to the following Mfg. Nos.:

1694874 - 42" Two-Stage Snowthrower

Hardware Identification & Torque Specifications

Common Hardware Types

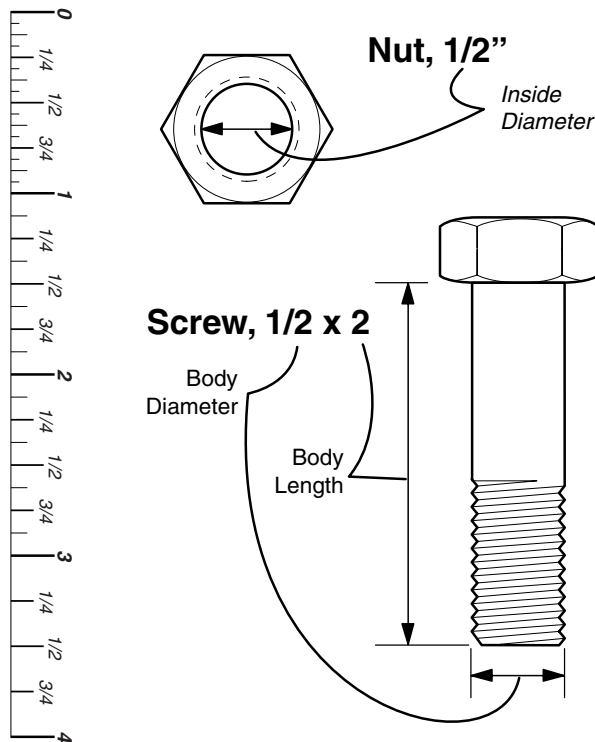


Standard Hardware Sizing

When a washer or nut is identified as **1/2"**, this is the *Nominal size*, meaning the *inside diameter* is 1/2 inch; if a second number is present it represent the *threads per inch*

When bolt or capscrew is identified as **1/2 - 16 x 2"**, this means the *Nominal size*, or *body diameter* is 1/2 inch; the second number represents the *threads per inch* (16 in this example, and the final number is the *body length* of the bolt or screw (in this example 2 inches long).

The guides and ruler furnished below are designed to help you select the appropriate hardware and tools.



Torque Specification Chart						
FOR STANDARD MACHINE HARDWARE (Tolerance ± 20%)						
Hardware Grade	No Marks SAE Grade 2		SAE Grade 5		SAE Grade 8	
	in/lbs ft/lbs	Nm.	in/lbs ft/lbs	Nm.	in/lbs ft/lbs	Nm.
8-32	19	2.1	30	3.4	41	4.6
8-36	20	2.3	31	3.5	43	4.9
10-24	27	3.1	43	4.9	60	6.8
10-32	31	3.5	49	5.5	68	7.7
1/4-20	66	7.6	8	10.9	12	16.3
1/4-28	76	8.6	10	13.6	14	19.0
5/16-18	11	15.0	17	23.1	25	34.0
5/16-24	12	16.3	19	25.8	27	34.0
3/8-16	20	27.2	30	40.8	45	61.2
3/8-24	23	31.3	35	47.6	50	68.0
7/16-14	30	40.8	50	68.0	70	95.2
7/16-20	35	47.6	55	74.8	80	108.8
1/2-13	50	68.0	75	102.0	110	149.6
1/2-20	55	74.8	90	122.4	120	163.2
9/16-12	65	88.4	110	149.6	150	204.0
9/16-18	75	102.0	120	163.2	170	231.2
5/8-11	90	122.4	150	204.0	220	299.2
5/8-18	100	136	180	244.8	240	326.4
3/4-10	160	217.6	260	353.6	386	525.0
3/4-16	180	244.8	300	408.0	420	571.2
7/8-9	140	190.4	400	544.0	600	816.0
7/8-14	155	210.8	440	598.4	660	897.6
1-8	220	299.2	580	788.8	900	1,244.0
1-12	240	326.4	640	870.4	1,000	1,360.0

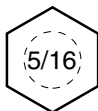
NOTES

- These torque values are to be used for all hardware excluding: locknuts, self-tapping screws, thread forming screws, sheet metal screws and socket head setscrews.
- Recommended seating torque values for locknuts:
 - for prevailing torque locknuts - use 65% of grade 5 torques.
 - for flange whizlock nuts and screws - use 135% of grade 5 torques.
- Unless otherwise noted on assembly drawings, all torque values must meet this specification.

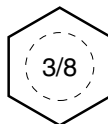
Wrench & Fastener Size Guide



1/4" Bolt or Nut
Wrench—7/16"



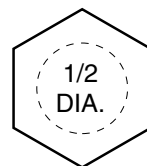
5/16" Bolt or Nut
Wrench—1/2"



3/8" Bolt or Nut
Wrench—9/16"



7/16" Bolt or Nut
Wrench (Bolt)—5/8"
Wrench (Nut)—11/16"



1/2" Bolt or Nut
Wrench—3/4"

