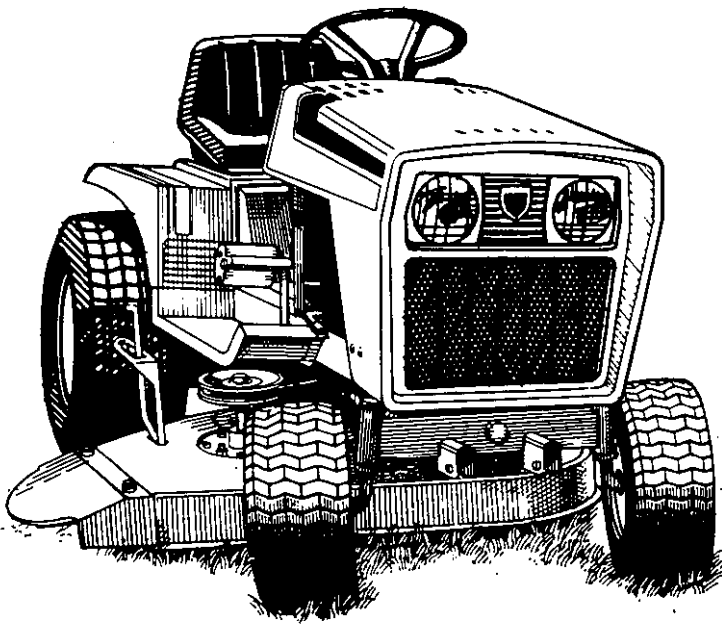


Parts Manual 6200 Series



TP 400-1090-02-0T-S

© Copyright 1988 Simplicity Manufacturing, Inc.
All Rights Reserved.

6211 TRACTOR
MFG. NO. 1691034

6212.5 TRACTOR
MFG. NO. 1691240

6216 TRACTOR
MFG. NO. 1691035

42" MOWER
MFG. NO. 1690708

48" MOWER
MFG. NO. 1690709

Simplicity[®]

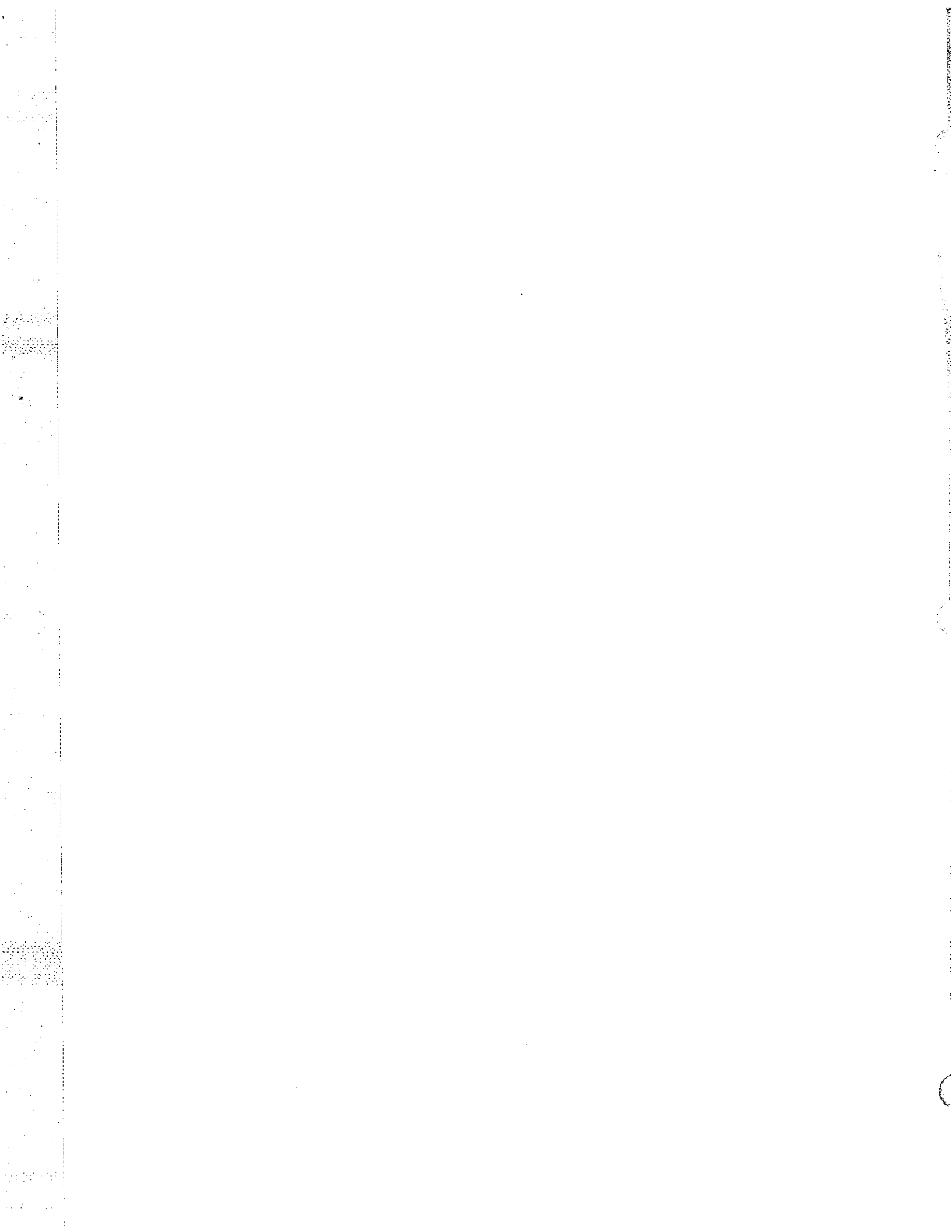
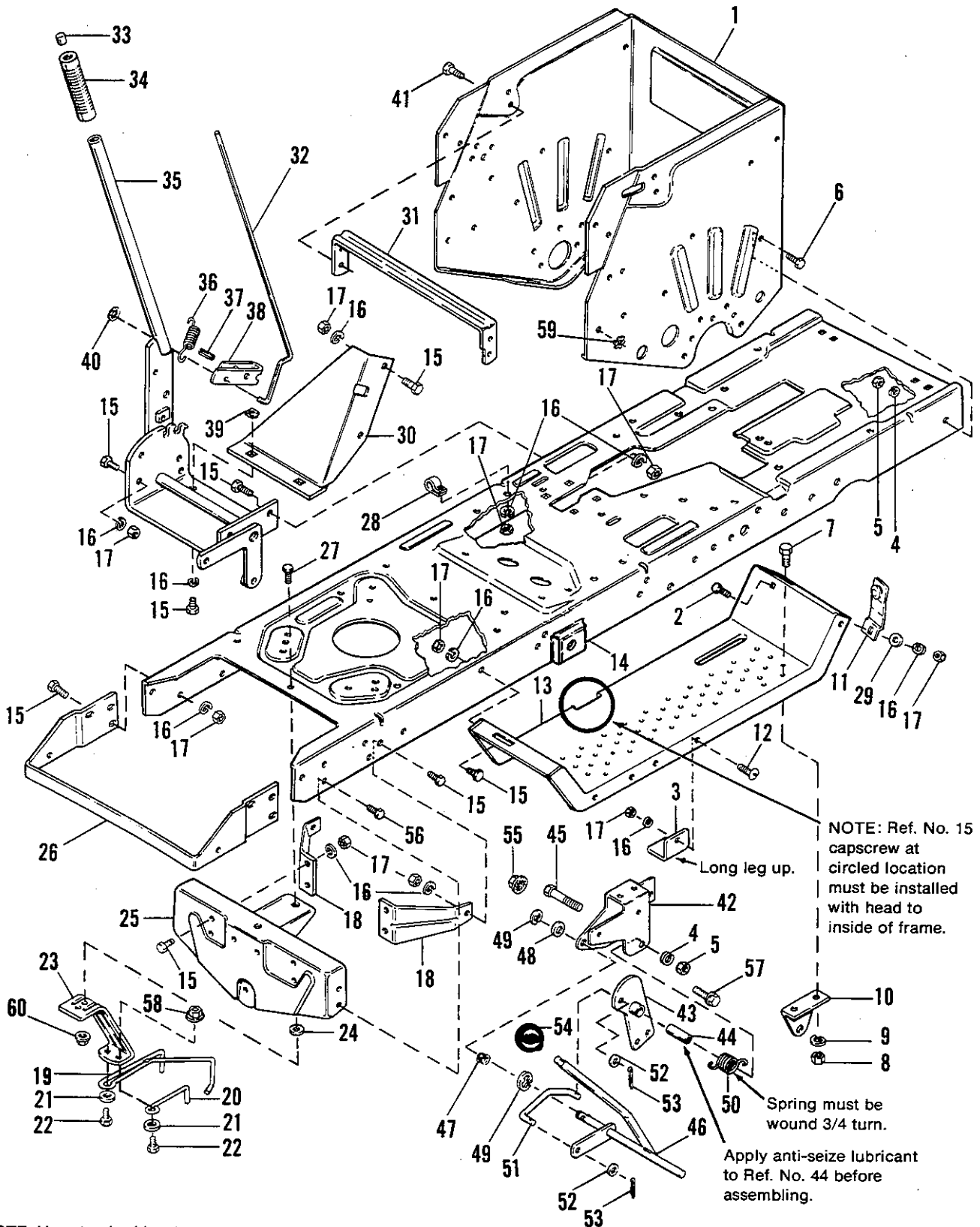


Table of Contents

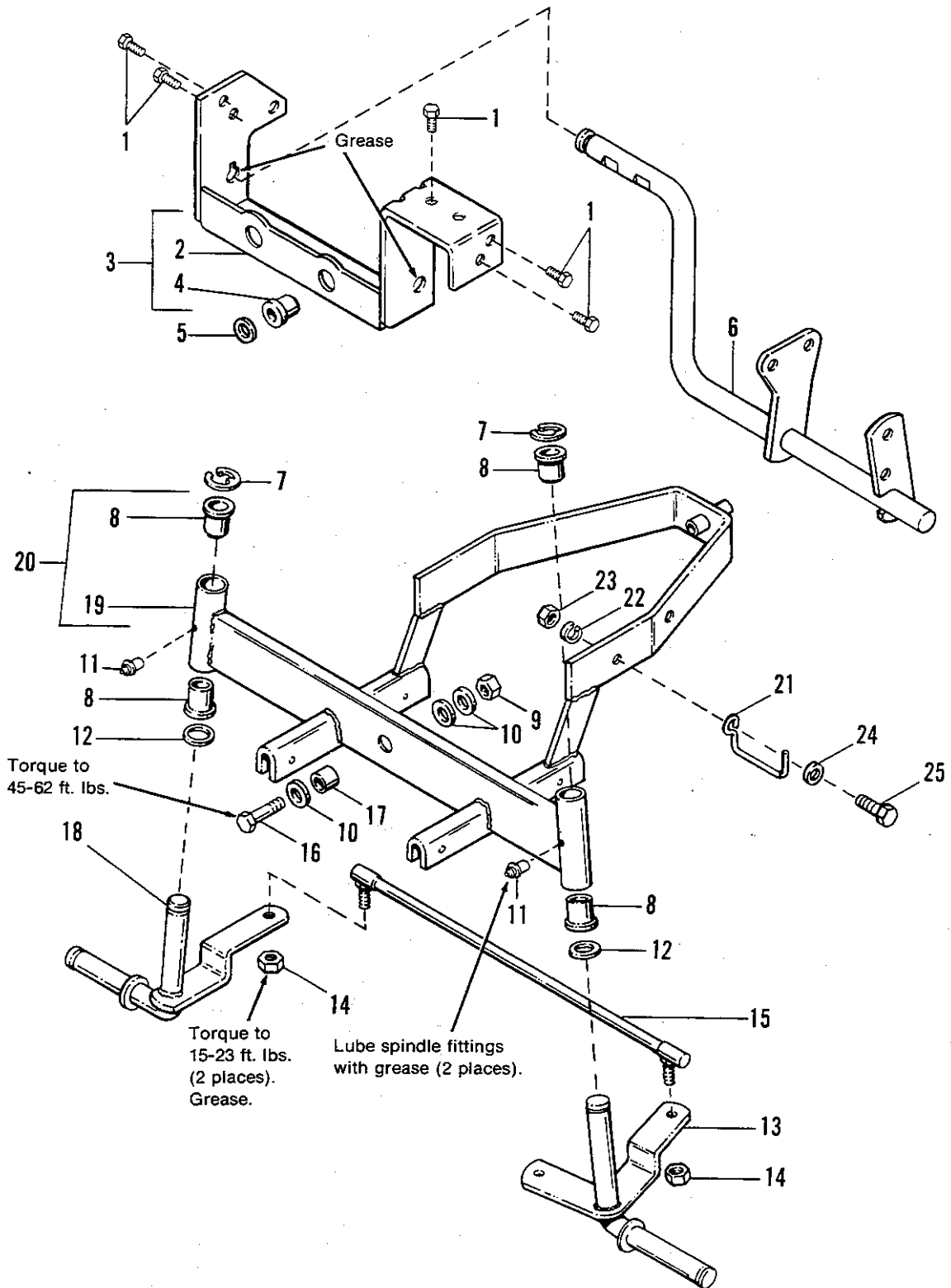
FRAME GROUP	4
Axle Wrapper, Clutch Support, Footrest, Frame, Axle Support Assy., P.T.O. Handle Assy.	
FRONT AXLE GROUP (Early Models)	6
Rear Axle Support Assy., Spindle Assys., Axle Sub Assy., Tie Rod	
FRONT AXLE GROUP (Later Models)	8
Rear Axle Support Assy., Spindle Assys., Axle Sub Assy., Tie Rod	
STEERING & FRONT WHEELS GROUP	10
Steering Plate, Steering Shaft Assy., Steering Rod, Steering Wheel, Wheel & Tire Assy., Tube, Drag Link	
ENGINE GROUP (6211)	12
Oil Drain Pipe, Engine, Throttle Control Assy., Muffler, Engine Pulley Assy., Exhaust Pipe, Belt Stops	
ENGINE GROUP (6212.5 & 6216)	14
Choke, Engine, Throttle Control Assy., Pulley Assy., Oil Drain Pipe, Muffler Extension, Belt Stops	
WHEEL & TIRE GROUP	16
Wheel & Tire Assy., Support Bracket, Tube	
LINKAGE & DRIVE GROUP	18
Control Lever Assy., Shift Handle, Support Assy., Plates, Bearings, Bushings, Sheaves, Swing Arm Assy., Belts, Pulleys, Push Bar	
BRAKE & CLUTCH GROUP	20
Foot Pedal, End Plate, Clutch Rod, Rod Guide Assy., Brake Rod, Variator Bracket, Springs	
TRANSMISSION GROUP	22
Shift Rod, Case Assys., Support Assy., Bracket Assy., Springs, Pinion Assys., Bearings, Gears, Brake Band, Drawbar Assy., Vent, Forks, Axle Shafts	
ELECTRICAL GROUP	26
Frame Support, Switch Bracket & Lever, Battery, Solenoid, Cables, Wiring Harness, Circuit Breaker, P.T.O. Interlock Switch,, Diode Assy.	
HOOD, GRILLE & DASH GROUP	28
Dash Board Top & Bottom, Fuel Tank Assy., Indicator Lights, Upper Harness, Fuel Hose, Clamps, Dash Brace, Hood & Grille Assy., Screen	
SEAT & DECK GROUP	30
Seat, Seat Deck, Shift Panel, Upper & Lower Hinges, Seat Supports, Seat Springs	
42" & 48" MOWERS	
Housing Group	32
Deflector, Arbor Covers, Mower Deck, Baffle, Discharge Guard, Belt Stop, Roller Bracket Supports	

Arbor Group	32
Pulley Assys., Bearing Shield, Housings, Grass Shield, Blade Adaptor, Blades, Shaft & Bearing Assy.	
Clutch & Support Group	36
Mower V-Belt, Idler Pulleys, Clutch Rod, Idler Support, Rod Guide Assy., Spacers, Pivot Arm, Rocker Arm Assy., Brake Rod	
42" Height Adjusting & Roller Group	38
Control Lever, Lift Rod, Roller Bar, Rollers, Spacers, Mower Arm Assy., Roller Shaft Assy., Quadrant Assy., Adjusting Rods	
48" Height Adjusting & Roller Group	40
Control Lever, Lift Rod, Roller Bar, Rollers, Spacers, Mower Arm Assy., Roller Shaft Assy., Quadrant Assy., Adjusting Rods	
DECAL GROUP	42
STANDARD TORQUE SPECIFICATIONS	Inside Back Cover



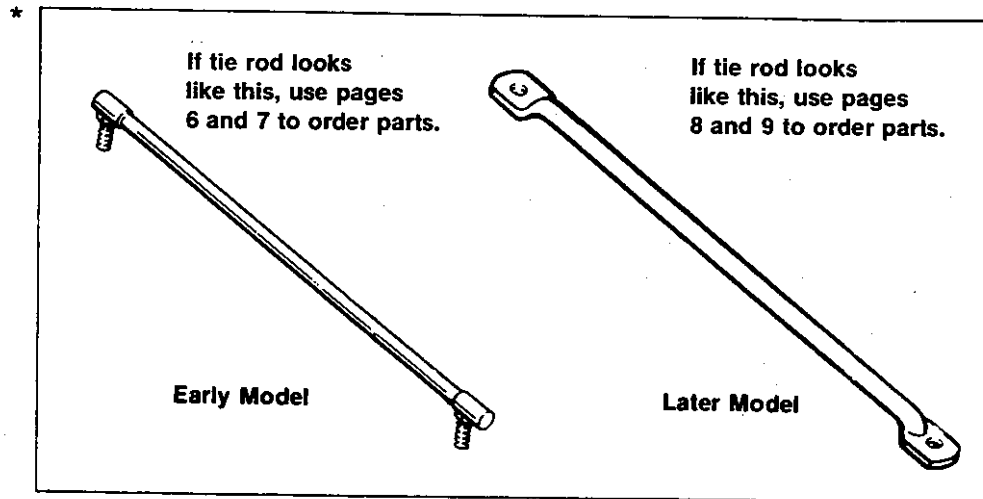
NOTE: Use standard hardware torque spec. chart unless otherwise noted.

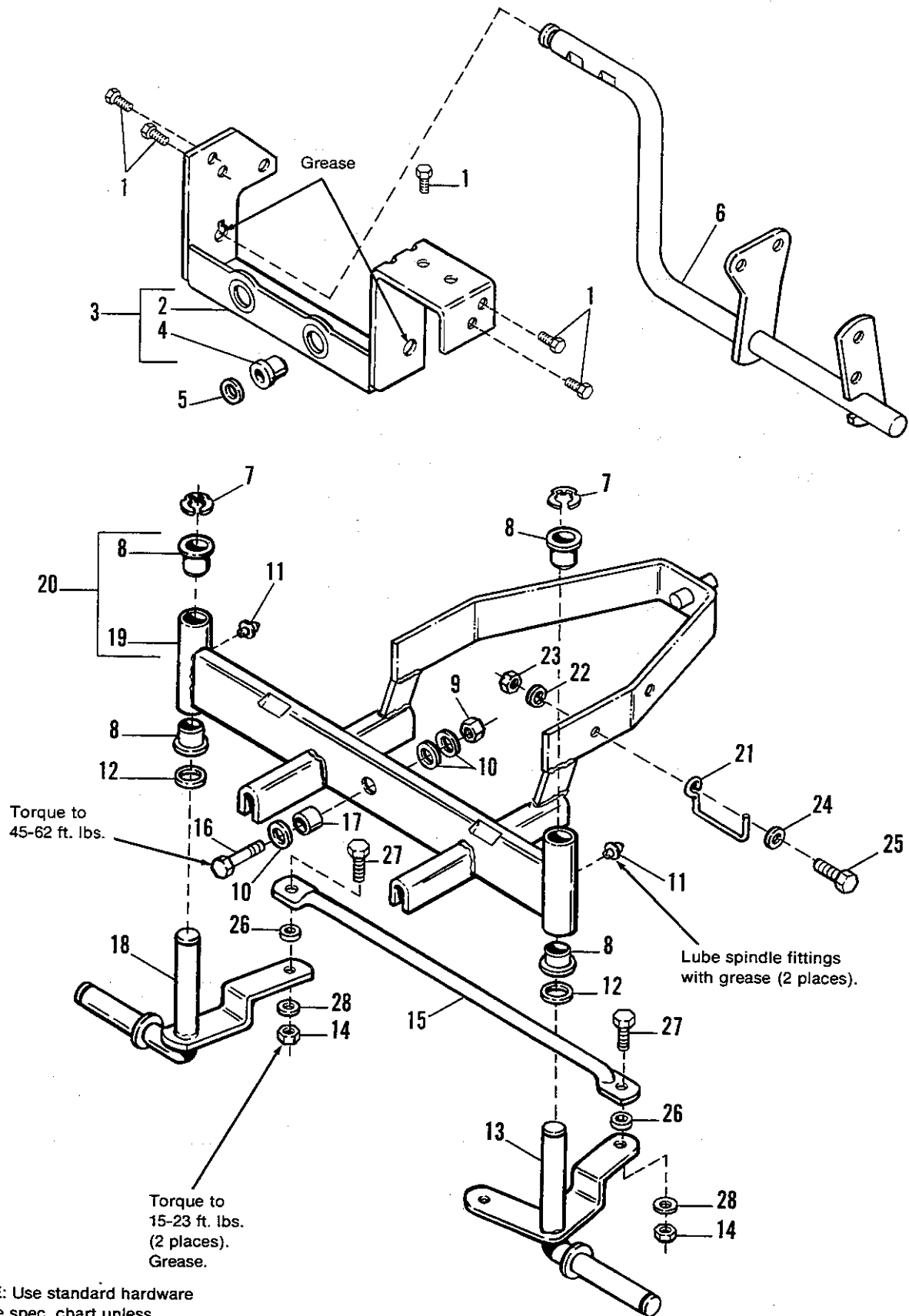
Ref. No.	Part No.	Qty.	Description
1	1671749	1	SUPPORT, Axle Wrapper
2	1931333	2	BOLT, Carriage, 5/16-18 x 3/4
3	1669168	2	UP-STOP, Mower
4	1916965	7	LOCKWASHER, 3/8
5	1916950	7	NUT, Hex, Full, 3/8-16
6	1921965	6	CAPSCREW, Hex, 3/8-16 x 3/4
7	1921959	2	CAPSCREW, Hex, 1/4-20 x 5/8
8	916622	2	NUT, Hex, Full, 1/4-20
9	916964	2	LOCKWASHER, 1/4
10	1654783	1	SUPPORT, Clutch
11	1672075	2	LATCH Assy.
12	1918249	2	SCREW, Truss Hd., Slotted, 5/16-18 x 3/4
13	1674141	2	FOOTREST
14	1674420	1	FRAME
15	1921332	23	CAPSCREW, Hex, 5/16-18 x 3/4
16	917356	27	LOCKWASHER, 5/16
17	1917372	25	NUT, Hex, Full, 5/16-18
18	1655076	2	BRACE, Axle Support
19	1672118	1	STOP, Belt
20	1665812	1	STOP, Belt
21	1917377	2	WASHER, Plain, 1/4
22	1923325	2	CAPSCREW, 5/16-18 x 7/8
23	1669169	1	SUPPORT, Belt Guide
24	1919381	1	WASHER, Plain, 11/32
25	1663855	1	SUPPORT ASSY., Axle
26	1666954	1	SUPPORT, Hood
27	1930595	1	CAPSCREW, Hex, 5/16-18 x 1
28	122186	1	CLAMP
29	1917642	2	WASHER, 5/16 Std.
30	1701223	1	BRACE, Lift
31	1654707	1	BRACE, Seat
32	1667290	1	ROD, Latch
33	1650157	1	BUTTON
34	156209	1	GRIP
35	1667295	1	LEVER ASSY., Lift
36	1667286	1	SPRING
37	1927609	1	PIN, Spring, 3/8 x 1
38	1657648	1	LATCH, Lever
39	916159	2	NUT, Speed, 5/16-18
40	934953	1	PUSHNUT
41	924856	4	SCREW, Tapitite, 5/16-18 x 1/2
42	1669113	1	BRACKET, P.T.O.
43	1669108	1	ARM ASSY., P.T.O. Rod
44	1669105	1	SPACER
45	1922130	1	CAPSCREW, Hex, 3/8-16 x 2-1/4
46	1702437	1	HANDLE ASSY., P.T.O.
47	1669197	1	BUSHING, Split
48	1960027	2	WASHER
49	158399	2	RING, Snap
50	1669339	1	SPRING, Torsion
51	1669104	1	LINK, P.T.O.
52	1924940	2	WASHER
53	1918447	2	PIN, Cotter, 3/32 x 3/4
54	8021050	1	KNOB
55	1930641	2	NUT, Flange, Whizlock, 1/4-20
56	1664847	4	SCREW, Tapitite, 5/16-18 x 3/4
57	936517	2	CAPSCREW, Hex, Wash. Hd., 1/4-20 x 5/8
58	1935048	2	LOCKNUT, Hex, Flange, 5/16-18
59	920427	6	LOCKWASHER, 3/8 (Zinc Pltd.)
60	1927557	1	NUT, Hex Flange Whizlock, 5/16-18



NOTE: Use standard hardware torque spec. chart unless otherwise noted.

Ref. No.	Part No.	Qty.	Description
1	1664847	5	SCREW, Taptite, 5/16-18 x 3/4
2		1	SUPPORT ASSY., Axle Rear (See Ref. No. 3)
3	1669260	1	SUPPORT ASSY., Axle Rear w/ Bushing (Incl. Ref. Nos. 2 & 4)
4	1663114	1	BUSHING
5	1919387	1	WASHER, 5/8
6	1674924	1	LEVER ASSY., Brake
7	927794	2	E-Ring, Ext., 3/4 Dia.
8	176440	4	BUSHING
9	1930648	1	LOCKNUT, Hex, 1/2-13
10	1926192	3	WASHER, Plain, 9/16
11	921133	2	FITTING, Grease, 1/4-20
12	1960114	2	WASHER
13	1665080	1	SPINDLE ASSY., L.H.
14	1668927	2	LOCKNUT, Hex, Gr. "B", 3/8-24
15	1667247	1	ROD ASSY., Tie
16	1927469	1	CAPSCREW, Hex, 1/2-13 x 2-1/4
17	1668662	1	SPACER
18	1665079	1	SPINDLE ASSY., R.H.
19		1	AXLE SUB ASSY., (See Ref. No. 20)
20	1668656	1	AXLE ASSY., Front (Incl. Ref. Nos. 8 & 19)
21	1668147	1	GUIDE, Drag Link
22	917356	1	LOCKWASHER
23	1917372	1	NUT, Hex, Full, 5/16-18
24	1917642	1	WASHER, 5/16 Std.
25	1921333	1	CAPSCREW, Hex, 5/16-18 x 1

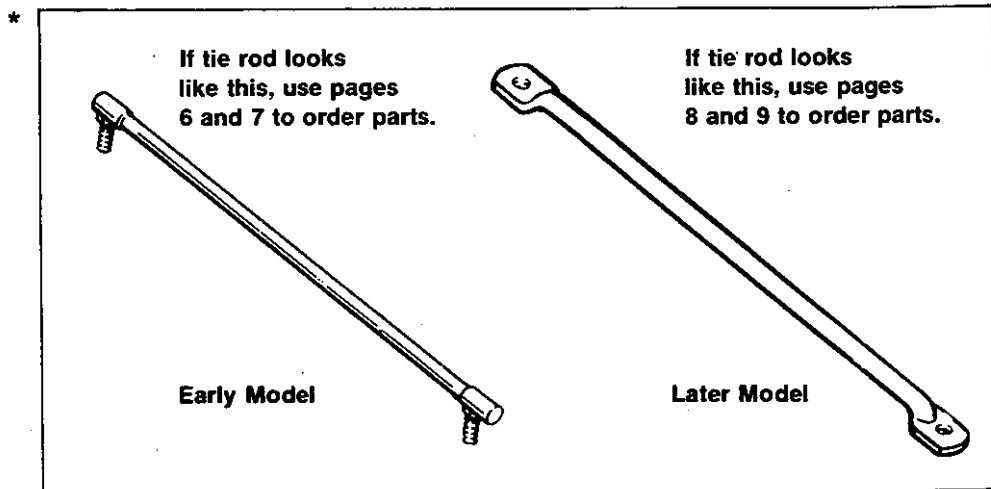




NOTE: Use standard hardware torque spec. chart unless otherwise noted.

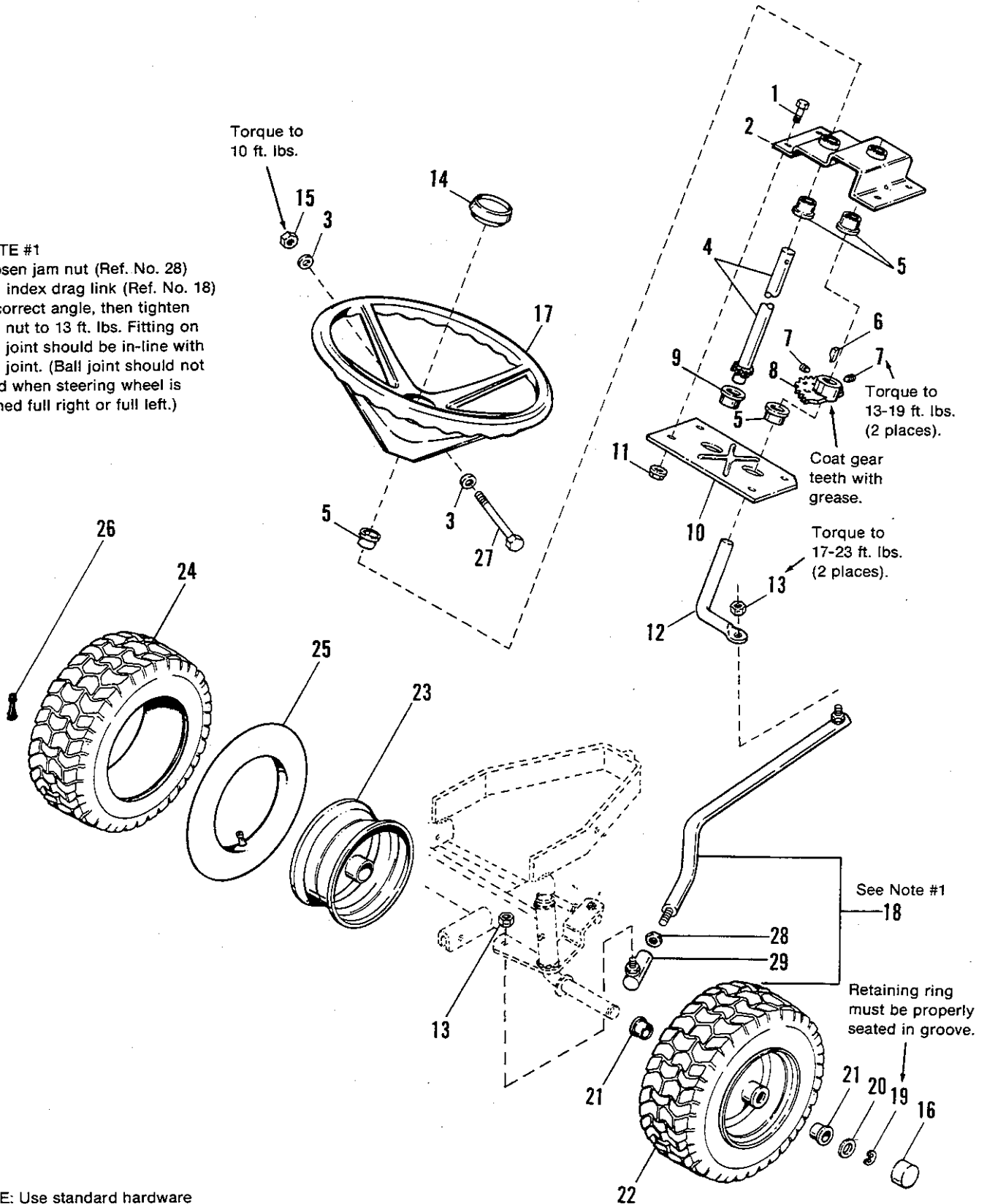
Front Axle Group

Ref. No.	Part No.	Qty.	Description
1	1664847	5	SCREW, Taptite, 5/16-18 x 3/4
2		1	SUPPORT ASSY., Axle Rear (See Ref. No. 3)
3	1669260	1	SUPPORT ASSY., Axle Rear w/ Bushing (Incl. Ref. Nos. 2 & 4)
4	1663114	1	BUSHING
5	1919387	1	WASHER, 5/8
6	1674924	1	LEVER ASSY., Brake
7	1611710	2	KLIP RING, Ext. 3/4
8	176440	4	BUSHING
9	1930648	1	LOCKNUT, Hex, 1/2-13
10	1926192	3	WASHER, Plain, 9/16
11	921133	2	FITTING, Grease, 1/4-20
12	1960114	2	WASHER
13	1677133	1	SPINDLE ASSY., L.H.
14	1930651	2	LOCKNUT, Hex, 3/8-16
15	1611715	1	ROD ASSY., Tie
16	1927469	1	CAPSCREW, Hex, 1/2-13 x 2-1/4
17	1668662	1	SPACER
18	1677131	1	SPINDLE ASSY., R.H.
19		1	AXLE SUB ASSY., (See Ref. No. 20)
20	1611707	1	AXLE ASSY., Front (Incl. Ref. Nos. 8 & 19)
21	1668147	1	GUIDE, Drag Link
22	917356	1	LOCKWASHER
23	1917372	1	NUT, Hex, Full, 5/16-18
24	1917642	1	WASHER, 5/16 Std.
25	1921333	1	CAPSCREW, Hex, 5/16-18 x 1
26	1611705	2	SPACER
27	1921210	2	CAPSCREW, 3/8-16 x 1
28	1924940	2	WASHER



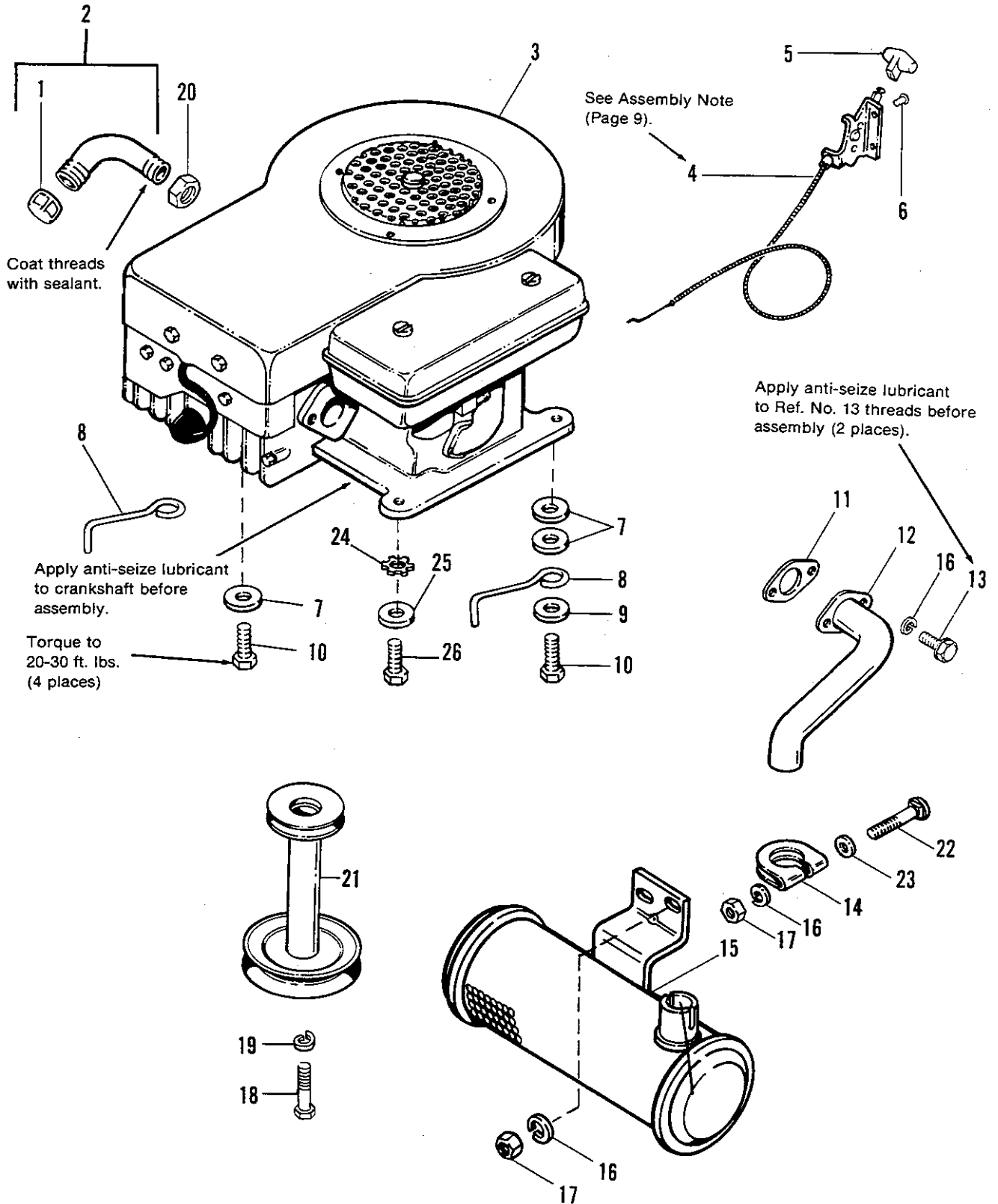
NOTE #1

Loosen jam nut (Ref. No. 28) and index drag link (Ref. No. 18) to correct angle, then tighten jam nut to 13 ft. lbs. Fitting on ball joint should be in-line with ball joint. (Ball joint should not bind when steering wheel is turned full right or full left.)



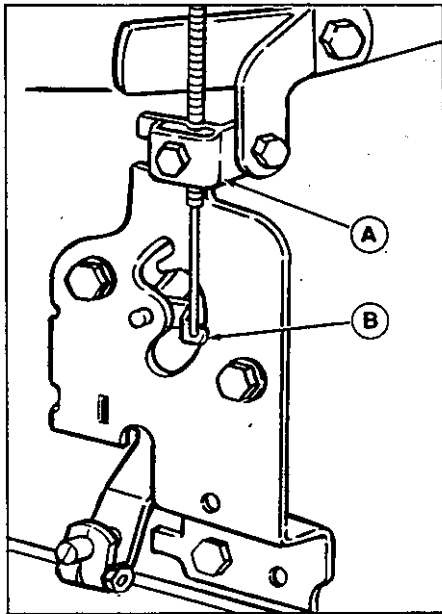
NOTE: Use standard hardware torque spec. chart unless otherwise noted.

Ref. No.	Part No.	Qty.	Description
1	1921332	4	CAPSCREW, 5/16-18 x 3/4
2	1667513	1	PLATE, Steering
3	1919326	2	WASHER, Plain, 5/16
4	1674140	1	SHAFT ASSY., Steering
5	176440	4	BUSHING
6	1667622	1	KEY
7	1928721	2	SETSCREW, 5/16-18 x 1/2
8	1675388	1	GEAR, Steering
9	1671737	1	BUSHING
10	1652743	1	PLATE, Steering
11	1935048	4	LOCKNUT, Hex, Flange, 5/16-18
12	1674076	1	ROD, Steering
13	1668927	2	NUT, Special
14	1657017	1	CAP, Steering Wheel
15	1923362	1	LOCKNUT, 5/16-18
16	1673333	2	CAP, Hub, Thrd.
17	1670989	1	WHEEL, Steering
18	1674144	1	LINK, Drag (Incl. Ref. Nos. 28 & 29)
19	1611710	2	KLIP RING, Ext. 3/4
20	960202	2	WASHER
21	156316	4	BEARING
22	1653617	2	WHEEL & TIRE ASSY., 15 x 6.00-6 (Incl. Ref. Nos. 21, 23, 24, 25 & 26)
23	1653615	2	WHEEL
24	1653618	2	TIRE, 15 x 6.00-6 (Carlisle)
25	1664090	2	TUBE, 4.10/3.50-6
26	172353	2	STEM, Valve & Cap
27	1925690	1	BOLT, Hex 5/16-18 x 3-1/2
28	1918403	1	JAM NUT
29	1669567	1	BALL JOINT



NOTE: Use standard hardware torque spec. chart unless otherwise noted.

Ref. No.	Part No.	Qty.	Description
1	1667346	1	PIPE, Cap, Hex
2	1658032	1	PIPE, Oil Drain (Incl. Ref. No. 1)
3		1	ENGINE ASSY., 11 HP
4	1657272	1	THROTTLE CONTROL ASSY.
5	1669147	1	KNOB, Throttle
6	960241	2	RIVET, Pop, 1/4 x .44
7	1922755	6	WASHER, Plain, 13/32
8	1674558	2	STOP, Belt Engine
9	1917378	2	WASHER, Plain, 3/8
10	1930598	4	SCREW, Taptite, 3/8-16 x 1-1/2
11	1650670	1	GASKET, Muffler
12	1669146	1	PIPE, Exhaust
13	1921332	2	CAPSCREW, Hex, 5/16-18 x 3/4
14	1676183	1	CLAMP, Exhaust
15	1669143	1	MUFFLER
16	917356	7	LOCKWASHER, 5/16
17	1917372	2	NUT, Hex, 5/16-18
18	1928038	1	CAPSCREW, 7/16-20 x 1-1/4
19	1918199	1	LOCKWASHER, 7/16
20	1932849	1	LOCKNUT, Conduit, 3/8
21	1676274	1	PULLEY ASSY., Engine
22	1931342	1	BOLT, Carriage, 5/16-18 x 2-3/4
23	1917642	1	WASHER, 5/16
24	920427	1	LOCKWASHER, Ext. Tooth, (Zinc Pltd.)
25	922755	1	WASHER (Zinc Pltd.)
26	930598	1	SCREW, Taptite, 3/8-16 x 1-1/2 (Zinc Pltd.)

**ASSEMBLY NOTE - THROTTLE CONTROL**

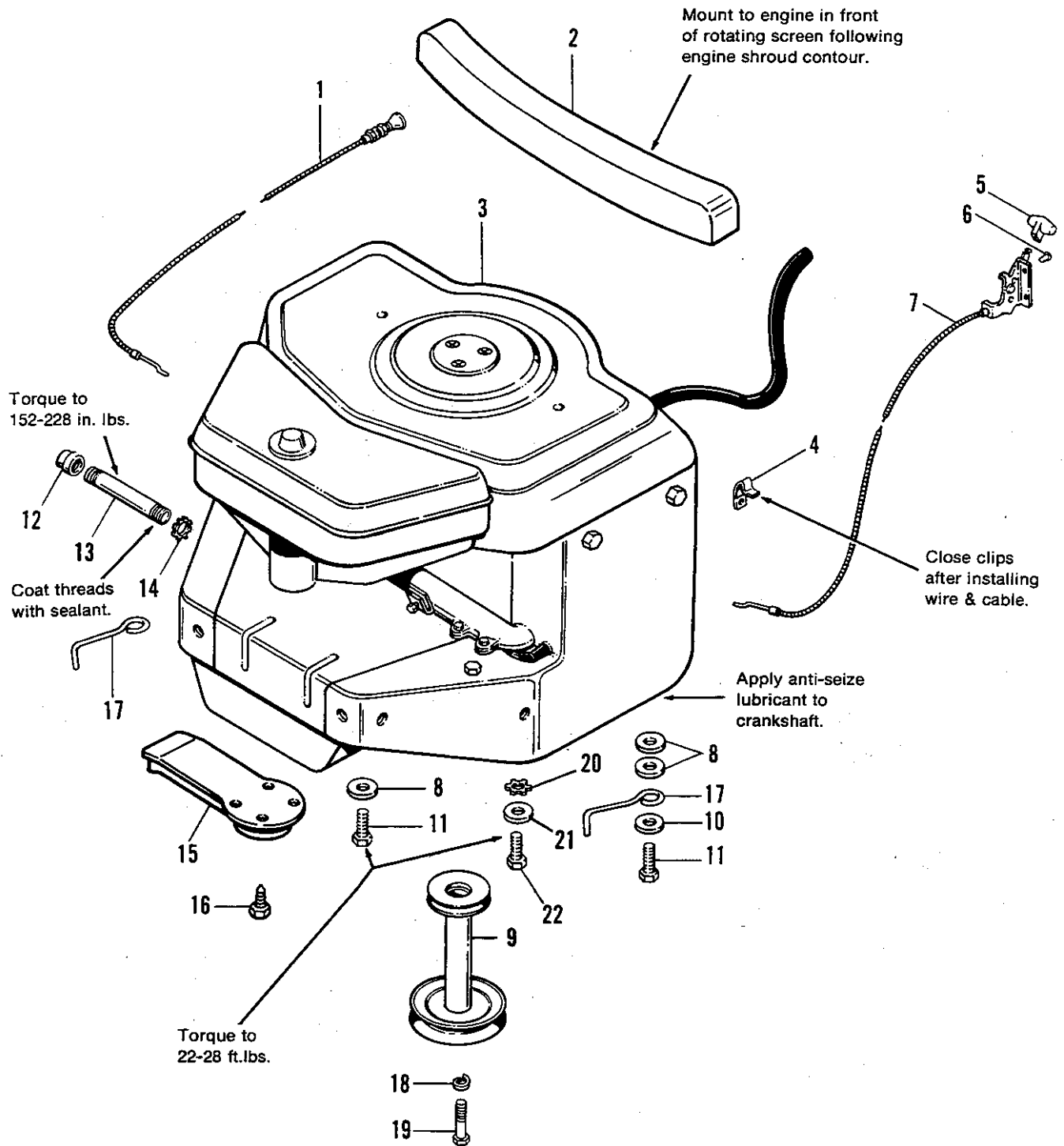
1. Place throttle control lever in choke position, upper most position.
2. Hook the cable into engine throttle arm (B) pull cable tight, and tighten throttle clamp (A) as shown.
3. Check full operating range, should have a positive full throttle detent. When moved past the detent, the choke rod should move to full choke position.

NOTE: Use *Simplicity* Brand Engine Oils for operating temperatures as follows:

32° F & Below
14° F & Above

5W30-SF/CO
15W40-SF/CD

Case of 12 Qts.
Part Number
1685576
1685554



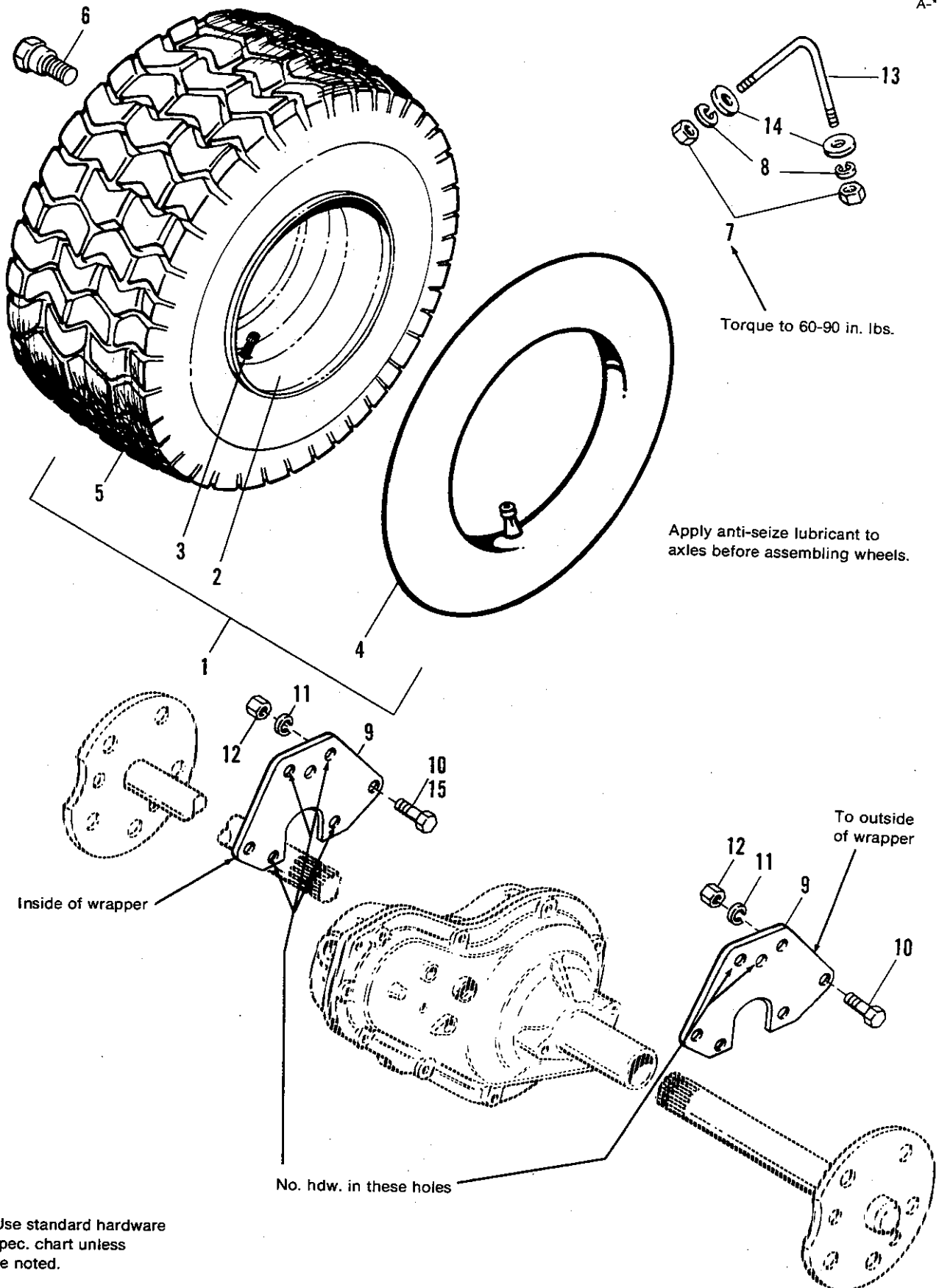
NOTE: Use standard hardware torque spec. chart unless otherwise noted.

Ref. No.	Part No.	Qty.	Description
1	1667748	1	CHOKE, w/Knob
2	1665752	1	BAFFLE, Engine, Rear
3		1	ENGINE ASSY., 16 HP
		1	ENGINE ASSY., 12.5 HP
4	1666835	4	CLAMP, Wire
5	1669147	1	KNOB, Throttle
6	960241	2	RIVET
7	1668047	1	THROTTLE CONTROL ASSY.
8	1924356	5	WASHER
9	1676274	1	PULLEY ASSY., Engine
10	917378	2	WASHER, Plain, 3/8
11	1930598	3	SCREW, Taptite, 3/8-16 x 1-1/2
12	1667346	1	PIPE, Cap, Hex
13	1670680	1	PIPE, Oil Drain
14	1932849	1	LOCKNUT, Conduit, 3/8
15	1666787	1	EXTENSION ASSY., Muffler
16	1934940	4	SCREW, Hex, Thd. Cutting, #8-32 x 3/8
17	1674558	2	STOP, Belt, Engine
18	1918199	1	LOCKWASHER, 7/16
19	1928038	1	CAPSCREW, 7/16-20 x 1-1/4
20	920427	1	LOCKWASHER, Ext. Tooth (Zinc Pltd.)
21	924356	1	WASHER, Plain, 3/8 (Zinc Pltd.)
22	1921210	1	CAPSCREW, 3/8-16 x 1

NOTE: Use *Simplicity* Brand Engine Oils for operating temperatures as follows:

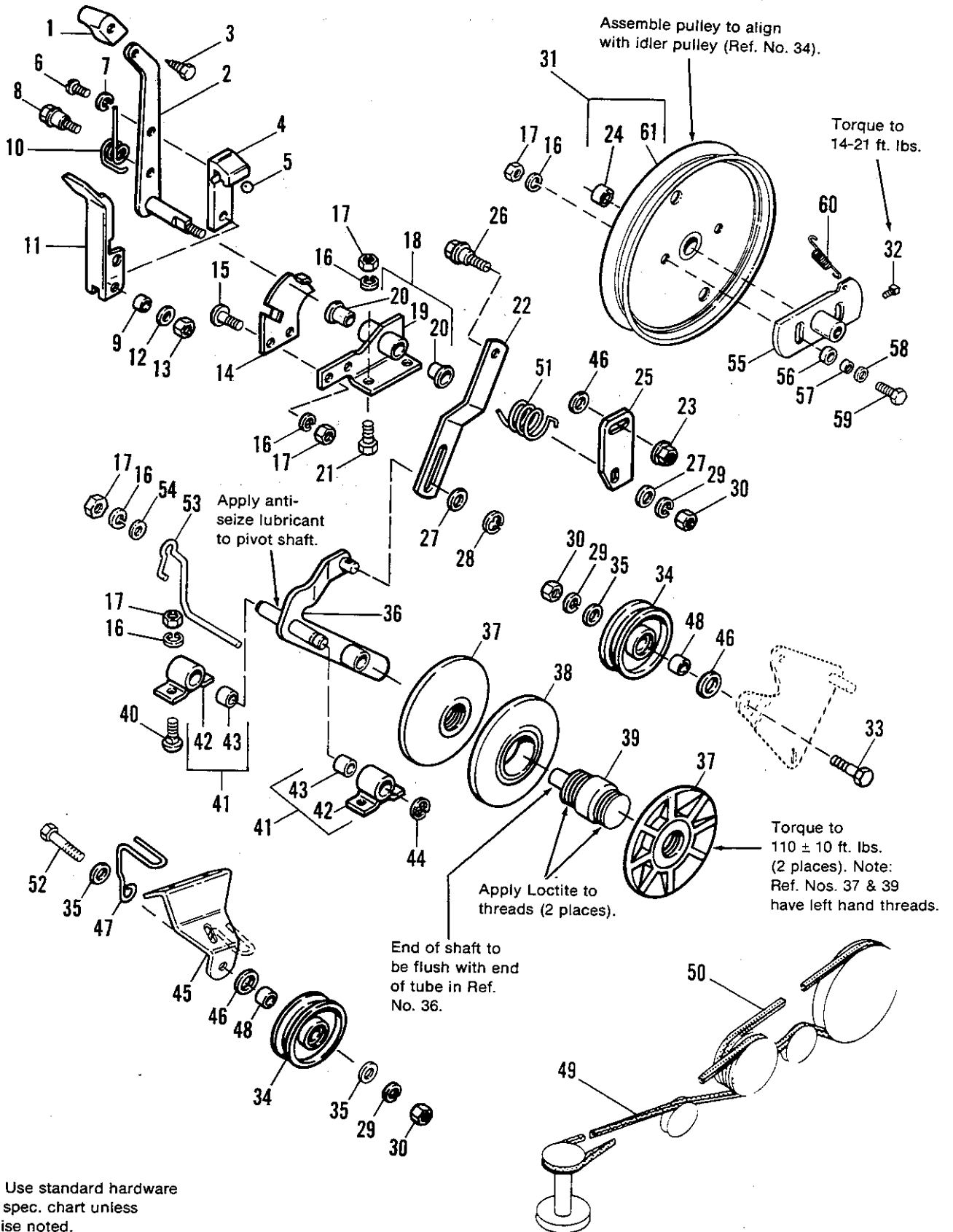
		Case of 12 Quarts Part Number
32° F & Below	5W30-SF/CO	1685576
14° F & Above	15W40-SF/CD	1685554

A-698

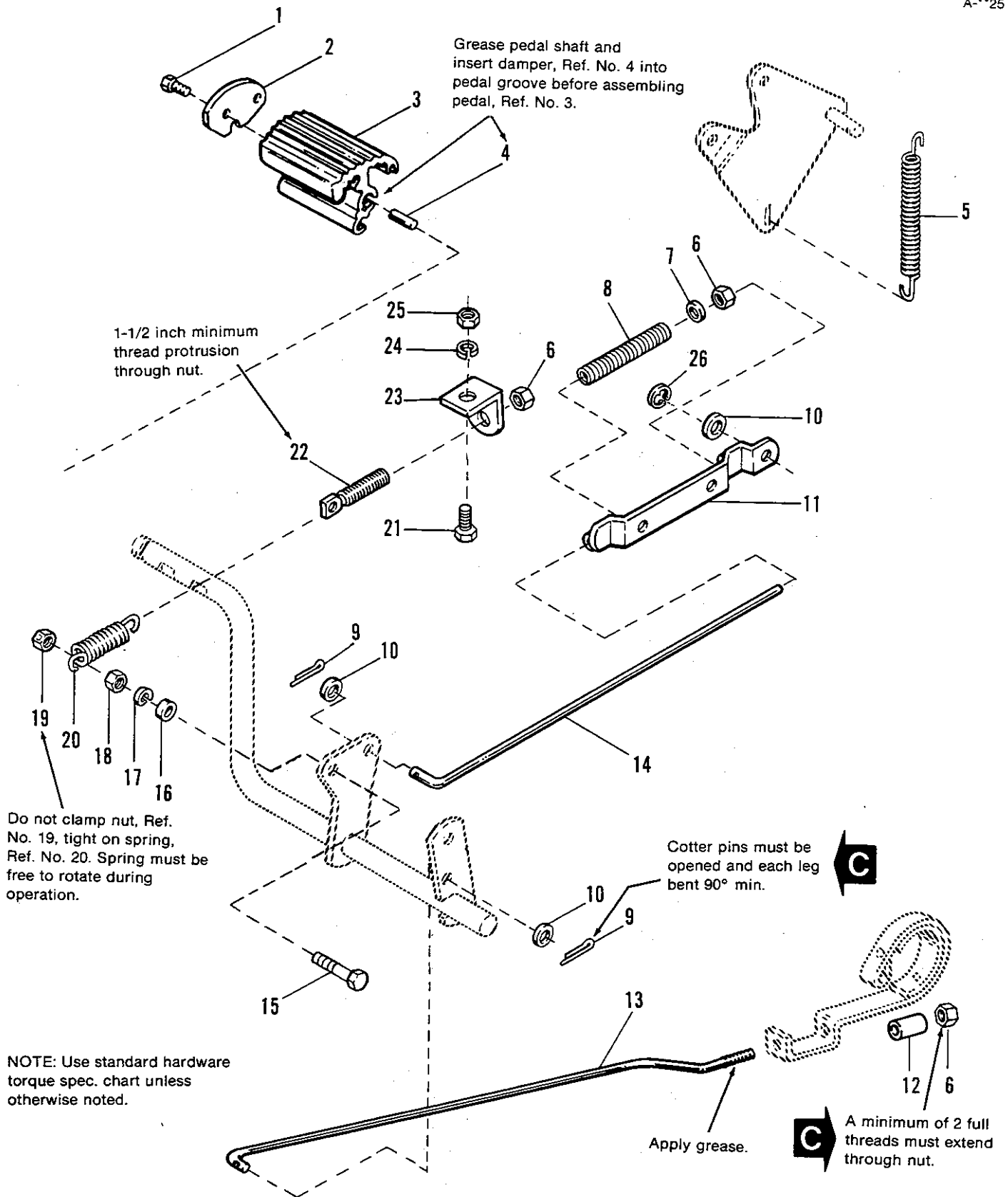


NOTE: Use standard hardware torque spec. chart unless otherwise noted.

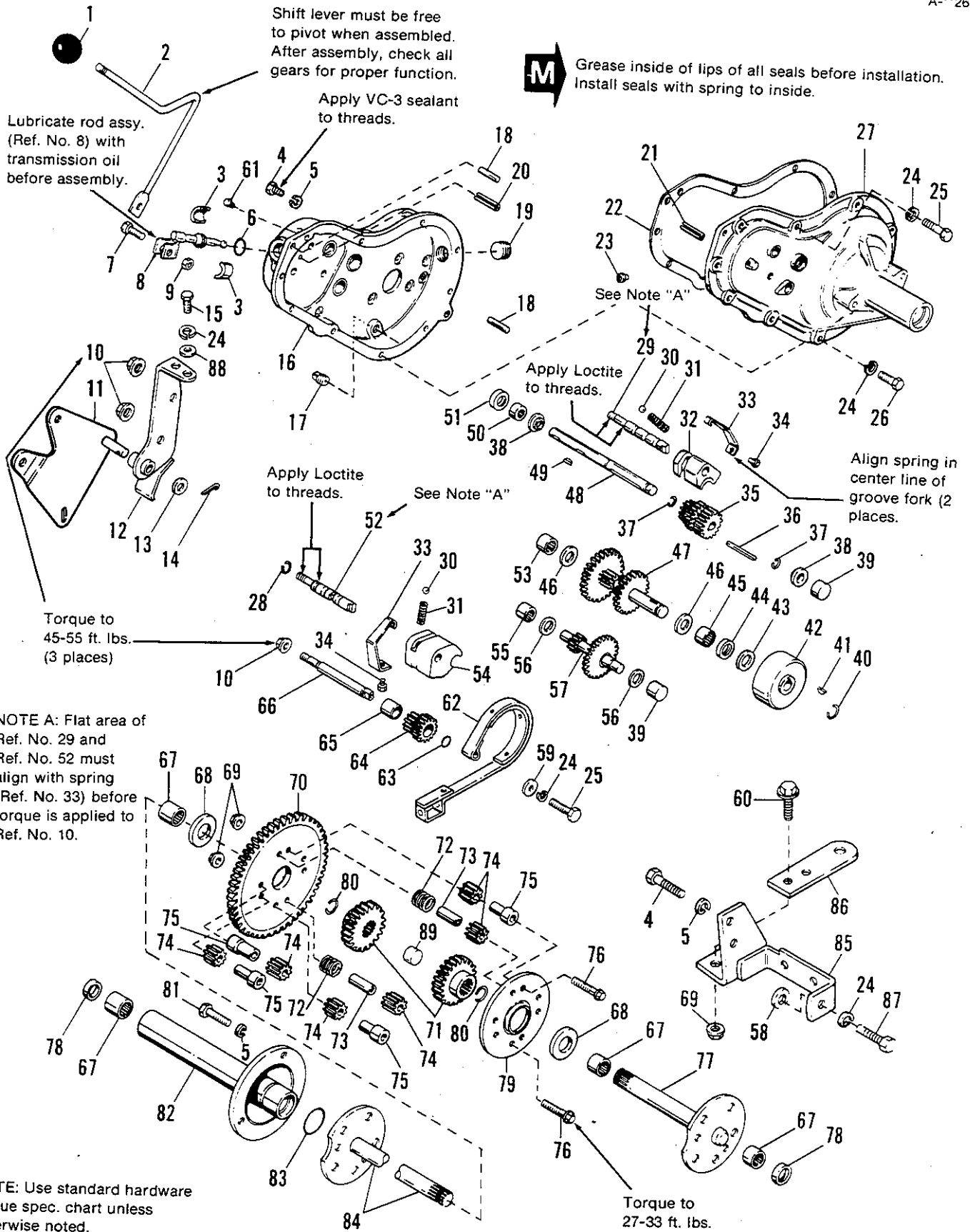
Ref. No.	Part No.	Qty.	Description
1	173431	2	WHEEL & TIRE ASSY. (Incl. Ref. Nos. 2, 3, 4 & 5) (23 x 8.50-12) (6211 & 6212.5)
	173432	2	WHEEL & TIRE ASSY. (Incl. Ref. Nos. 2, 3, 4 & 5) 23 x 10.50-12) (6216)
2	173430	2	WHEEL
3	172353	2	VALVE STEM
4	157602	2	TUBE, 23 x 8.50-12 (6211 & 6212.5)
	157638	2	TUBE, 23 x 10.50-12 (6216)
5	1605968	2	TIRE, Turf, 23 x 8.50-12 (Carlisle) (6211 & 6212.5)
	1605967	2	TIRE, Turf, 23 x 10.50-12 (Carlisle) (6216)
6	8261100	10	BOLT, Hub
7	1917372	2	NUT, Hex 5/16-18
8	917356	2	LOCKWASHER, 5/16
9	1653885	2	BRACKET, Support
10	1934654	9	SCREW, Whizlock 3/8-16 x 1 (Qty. 6 on 6212.5 & 6216)
11	916965	7	LOCKWASHER 3/8
12	916950	7	NUT, Hex 3/8-16
13	1655084	1	BOLT, Axle
14	1917642	2	WASHER, 5/16
15	1921210	3	CAPSCREW, Hex, 3/8-16 x 1 (6212.5 & 6216 only)



Ref. No.	Part No.	Qty.	Description
1	171165	1	KNOB
2	1674927	1	CONTROL LEVER ASSY.
3	1960106	1	SCREW, Hex, Plastite 1/4-20 x 1
4	171432	1	STOP, Clamp
5	166178	1	BALL, Shift Handle
6	1926025	1	SCREW, Rd. Hd. Phil., 1/4-20 x 1/2
7	916964	1	LOCKWASHER, 1/4
8	166051	1	BOLT, Shoulder
9	166063	1	SPACER
10	166047	1	SPRING
11	171779	1	HANDLE
12	1917377	1	WASHER, 1/4
13	1923358	1	LOCKNUT, Hex, 1/4-20
14	1669412	1	PLATE, Side
15	1918249	2	SCREW, Truss Hd., Slotted, 5/16-18 x 3/4
16	917356	11	LOCKWASHER
17	1917372	11	NUT, Hex, 5/16-18
18	1673977	1	SUPPORT ASSY., w/Bushings (Incl. Ref. Nos. 19 & 20)
19		1	SUPPORT ASSY. (See Ref. No. 18)
20	1663114	2	BUSHING
21	1923325	2	SCREW, Hex, 5/16-18 x 7/8
22	1674901	1	BAR, Push
23	1928352	1	LOCKNUT, Flange, Whiz, 3/8-16
24	1674376	1	BEARING
25	1669416	1	PLATE, Lift
26	1669403	1	BOLT, Shoulder
27	1918266	3	WASHER, 3/8
28	928197	1	E-RING
29	916965	3	LOCKWASHER, 3/8
30	916950	3	NUT, Hex, 3/8-16
31	1674377	1	PULLEY ASSY., Transmission (Incl. Ref. No. 24 & 61)
32	1928721	2	SETSCREW
33	921969	1	SCREW, Hex, 3/8-16 x 1-1/2
34	1685147	2	PULLEY ASSY.
35	1917642	3	WASHER, 5/16
36	1675176	1	ARM ASSY., Swing
37	1675280	2	SHEAVE, Single
38	1675279	1	SHEAVE, Double w/Sleeve
39	1669348	1	HUB ASSY.
40	1931333	4	BOLT, Carriage, 5/16-18 x 3/4
41	1668798	2	PIVOT ASSY., Variator w/Bushing (Incl. Ref. Nos. 42 & 43)
42		2	PIVOT ASSY., Variator (See Ref. No. 41)
43	158544	2	BEARING
44	927793	1	E-RING
45	1674636	1	SUPPORT, Idler
46	922755	3	WASHER
47	1674635	1	BELT STOP, Idler
48	1666294	2	SPACER
49	1674898	1	BELT, Primary Variator
50	1674899	1	BELT, Secondary Variator
51	1669615	1	SPRING, Torsion
52	1921971	1	SCREW, Hex, 3/8-16 x 1-3/4
53	1675175	1	STOP, Belt
54	1918266	1	WASHER, 3/8
55	1674373	1	HUB ASSY., Drive
56	1675482	2	ROLLER
57	1675481	2	SPACER
58	1933468	2	WASHER
59	1926149	2	CAPSCREW, 5/16-18 x 1
60	1678341	1	SPRING
61		1	PULLEY (See Ref. No. 31)



Ref. No.	Part No.	Qty.	Description
1	927429	2	SCREW, Taptite, 1/4-20 x 5/8
2	1656854	1	END PLATE
3	1656852	1	PEDAL, Foot
4	1657322	1	DAMPER, Rubber
5	1669378	1	SPRING, Tension, Idler
6	1919439	3	LOCKNUT, ESNA, 3/8-16
7	922755	1	WASHER
8	1669614	1	SPRING
9	1918447	2	PIN, Cotter, 3/32 x 3/4
10	1924940	4	WASHER, 3/8
11	1669274	1	GUIDE ASSY., Clutch Rod
12	1665699	1	SPACER
13	1665456	1	ROD
14	1674900	1	ROD, Clutch
15	1921971	1	CAPSCREW, Hex, 3/8-16 x 1-3/4
16	1666294	1	SPACER
17	916965	1	LOCKWASHER, 3/8
18	916950	1	NUT, Hex, 3/8-16
19	1922694	1	LOCKNUT, 3/8-16
20	1666786	1	SPRING, Tension
21	1921333	1	CAPSCREW, Hex, 5/16-18 x 1
22	1669282	1	ROD, Tension Adjustment
23	1669377	1	BRACKET, Variator, Spring
24	917356	1	LOCKWASHER, 5/16
25	1917372	1	NUT, Hex, 5/16-18
26	928197	1	E-Ring

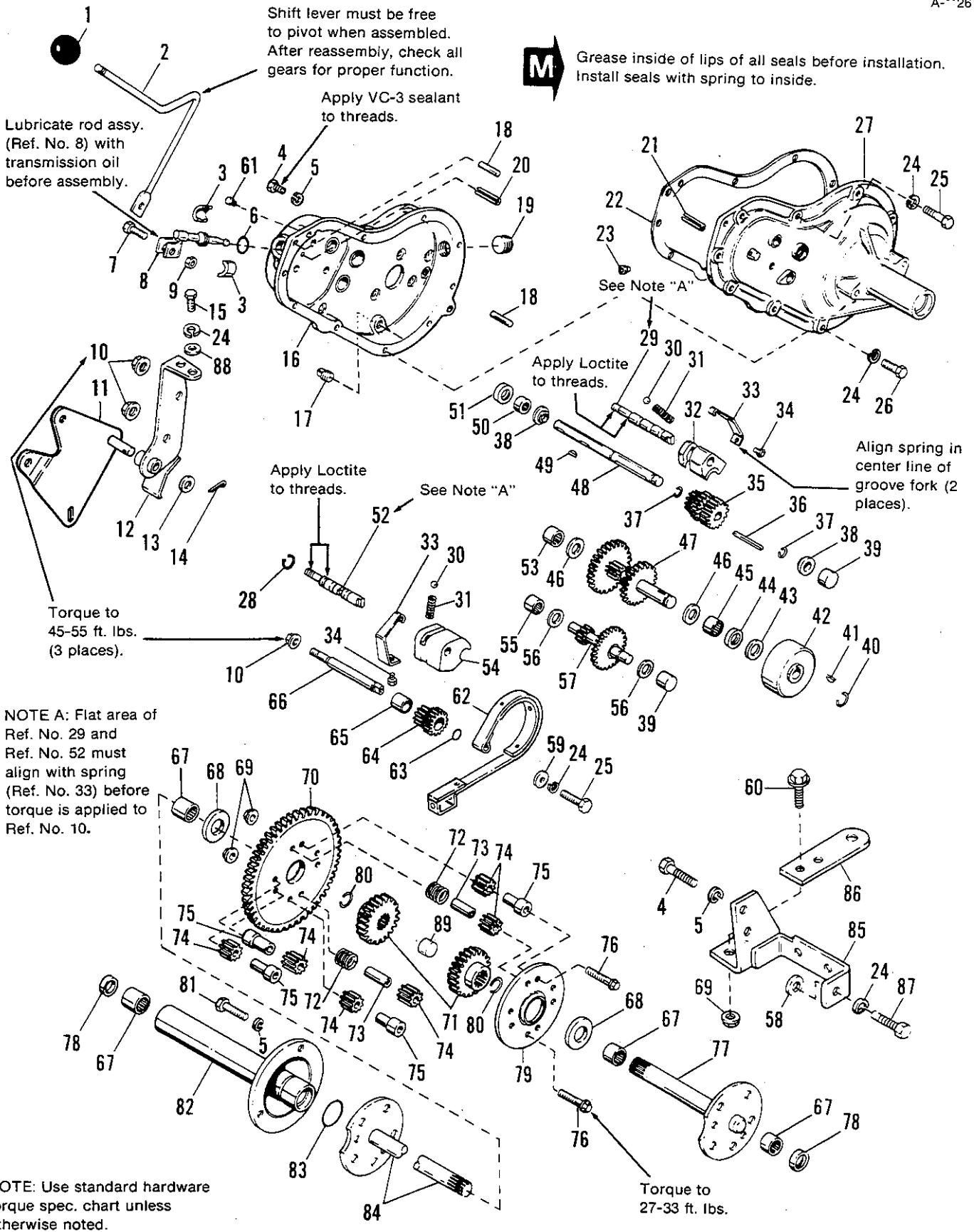


Ref. No.	Part No.	Qty.	Description
1	8021050	1	KNOB
2	1668152	1	ROD, Sift
3	101042	2	BUSHING
4	1921210	4	CAPSCREW, Hex, 3/8-18 x 1
5	916965	6	LOCKWASHER, 3/8
6	1665276	1	O-RING
7	1921960	1	CAPSCREW, Hex, 1/4-20 x 1
8	1663233	1	ROD ASSY., Pivot
9	1923358	1	LOCKNUT, Hex, 1/4-20
10	1935041	3	LOCKNUT, Flange, Whizlock, 7/16-14
11	1674917	1	BRACKET ASSY., Pulley
12	1668919	1	SUPPORT ASSY., Transmission
13	917378	1	WASHER, Plain, 3/8
14	1918447	1	PIN, Cotter, 3/32 x 3/4
15	1921333	2	CAPSCREW, Hex, 5/16-18 x 3/4
16	1676215	1	CASE ASSY., Gear (Incl. Ref. Nos. 3, 6, 8, 18, 20, 50, 53, 55 & 90)
17	1673452	1	PLUG, Pipe, 3/8
18	1927609	2	PIN, Spring, 3/8 Dia. x 1
19	930676	1	PLUG, Pipe, 3/4
20	156308	1	PIN ASSY., Roll
21	1664831	1	PIN ASSY., Roll
22	156103	1	GASKET
23	*118462	1	PLUG, Vent
24	917356	13	LOCKWASHER, 5/16
25	1921221	2	CAPSCREW, Hex, 5/16-18 x 1-1/2
26	1921977	8	CAPSCREW, Hex, 5/16-18 x 1-1/4
27	1676217	1	COVER ASSY., Gear Case (Incl. Ref. Nos. 21, 39, 45 & 67)
28	8061048	1	RING, Retaining
29	171372	1	SHAFT, Shift, 2nd & 3rd
30	915904	2	BALL, Shift Lock
31	171456	2	SPRING
32	1664943	1	FORK, Shift, 2nd & 3rd
33	1657656	2	SPRING, Leaf
34	1654905	2	CAPSCREW, Hex, Wash. Hd., 5/16-18 x 5/16
35	1664882	1	PINION ASSY., Drive
36	170453	1	KEY
37	1667621	2	RING, Retaining
38	1666379	2	WASHER
39	1664830	2	BEARING, Roller
40	927732	1	RING, Snap
41	930672	1	KEY, Hi Pro, 3/16 x 5/8
42	1665010	1	DRUM ASSY., Brake
43	911386	1	WASHER, Plain, 25/32
44	154263	1	SEAL, Oil

*Only equipped on models that do not have Ref. No. 61.

**NOTE: Parts Ref. Nos. 45 - 89 continued on following page.
Part No. 1585516, case of 12 quarts.**

NOTE: Oil Seal Replacement Kit 1685197 includes Ref. Nos. 22, 44, 51, 63, 78 and 83.



Ref. No.	Part No.	Qty.	Description
45	171597	1	BEARING
46	1960010	2	WASHER
47	1664870	1	PINION SHAFT & GEAR CLUSTER ASSY.
48	1685175	1	SHAFT, Input
49	930670	1	KEY, 3/16 x 3/4
50	156072	1	BEARING
51	156084	1	SEAL, Oil
52	171365	1	SHAFT, Shift, 1st & Rev.
53	171185	1	BEARING
54	1685262	1	FORK, Shift, 1st & Rev.
55	156073	1	BEARING
56	1960020	2	WASHER
57	1664874	1	PINION SHAFT & GEAR SSY., 1st
58	1917377	5	WASHER, 1/4
59	1917642	1	WASHER, Plain, 5/16
60	1928727	2	CAPSCREW, Hex, Flange, Whiz, 3/8-16 x 1-1/4
61	1676218	1	VENT, Atmospheric
62	1679355	1	BAND, Brake
63	165006	1	O-RING
64	1664878	1	PINION ASSY., 1st & Rev.
65	1664881	1	BUSHING
66	1664865	1	SHAFT, 1st & Rev. Pinion
67	105195	4	BEARING, Roller
68	960200	2	WASHER, Plain, 1
69	1930645	10	LOCKNUT, Flange, 3/8-16
70	1664734	1	GEAR, Drive
71	1664695	2	GEAR, Differential
72	162085	2	SPRING
73	121083	2	SPACER, Pinion Diff.
74	158579	8	PINION, Diff.
75	1664740	6	STUD, Diff.
76	1664742	8	CAPSCREW, Special
77	1671743	1	SHAFT, Axle, L.H.
78	118118	2	SEAL, Oil
79	1664743	1	PLATE, Diff.
80	927320	2	RING, Snap
81	1921966	3	CAPSCREW, 3/8-16 x 7/8
82	1665269	1	HOUSING & BEARING ASSY., Axle (Includes Ref. No. 67)
83	156099	1	O-RING
84	1671744	1	SHAFT, Axle, R.H.
85	1668974	1	DRAWBAR ASSY.
86	1669131	1	DRAWBAR
87	1922127	1	CAPSCREW, Hex, 5/16 x 1-3/4
88	1960141	2	WASHER, 5/16
89	1671745	1	SPACER

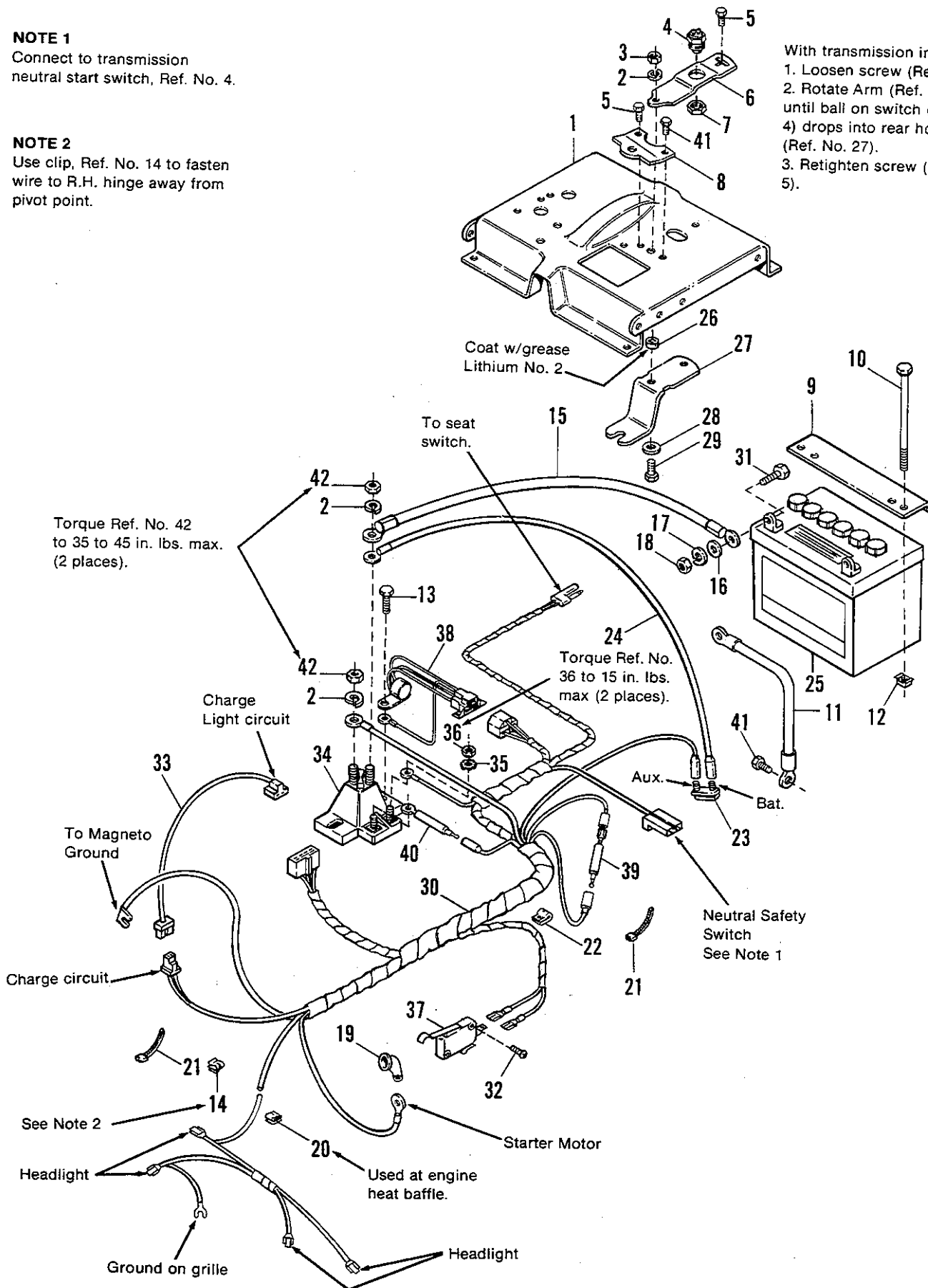
NOTE 1

Connect to transmission neutral start switch, Ref. No. 4.

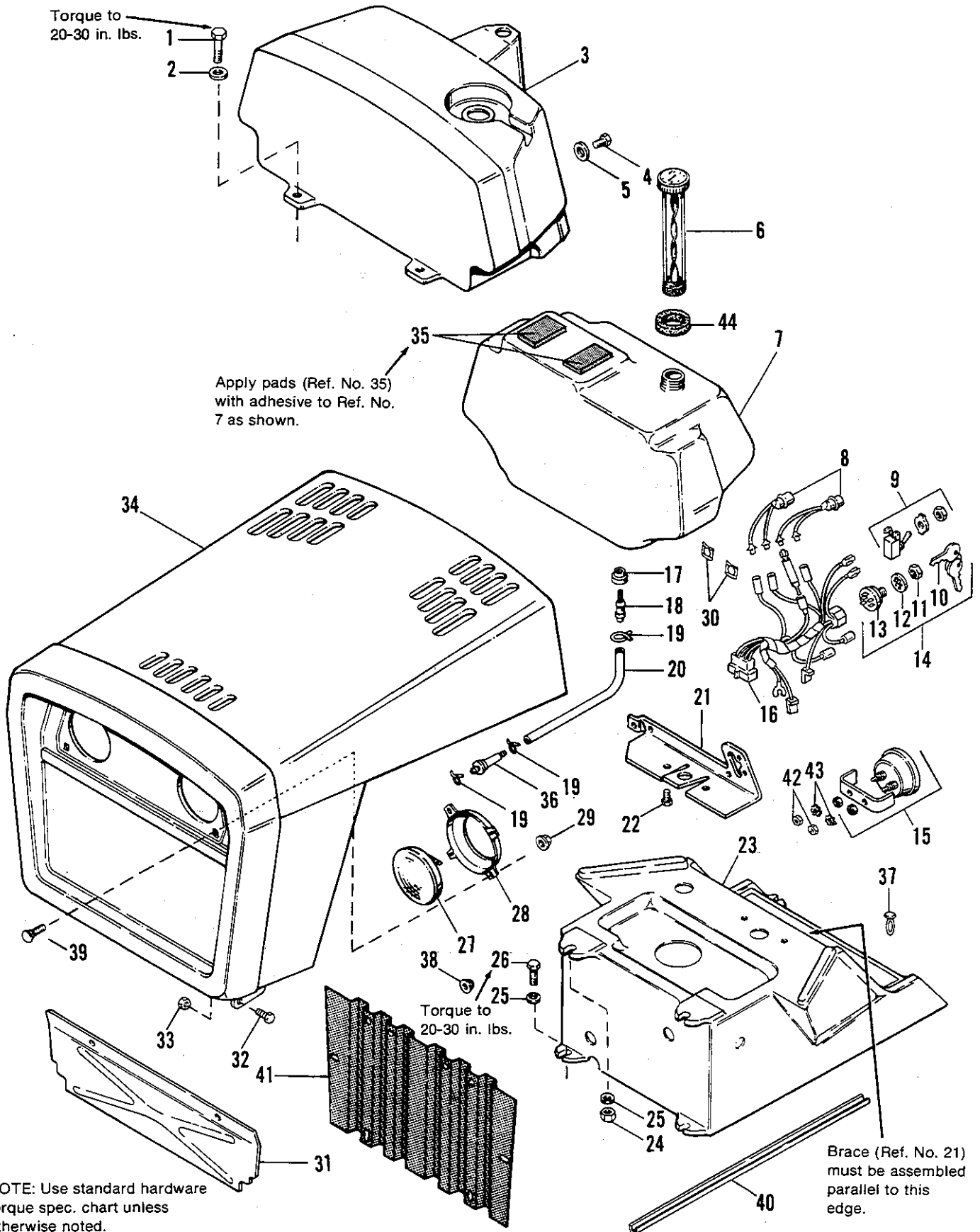
NOTE 2

Use clip, Ref. No. 14 to fasten wire to R.H. hinge away from pivot point.

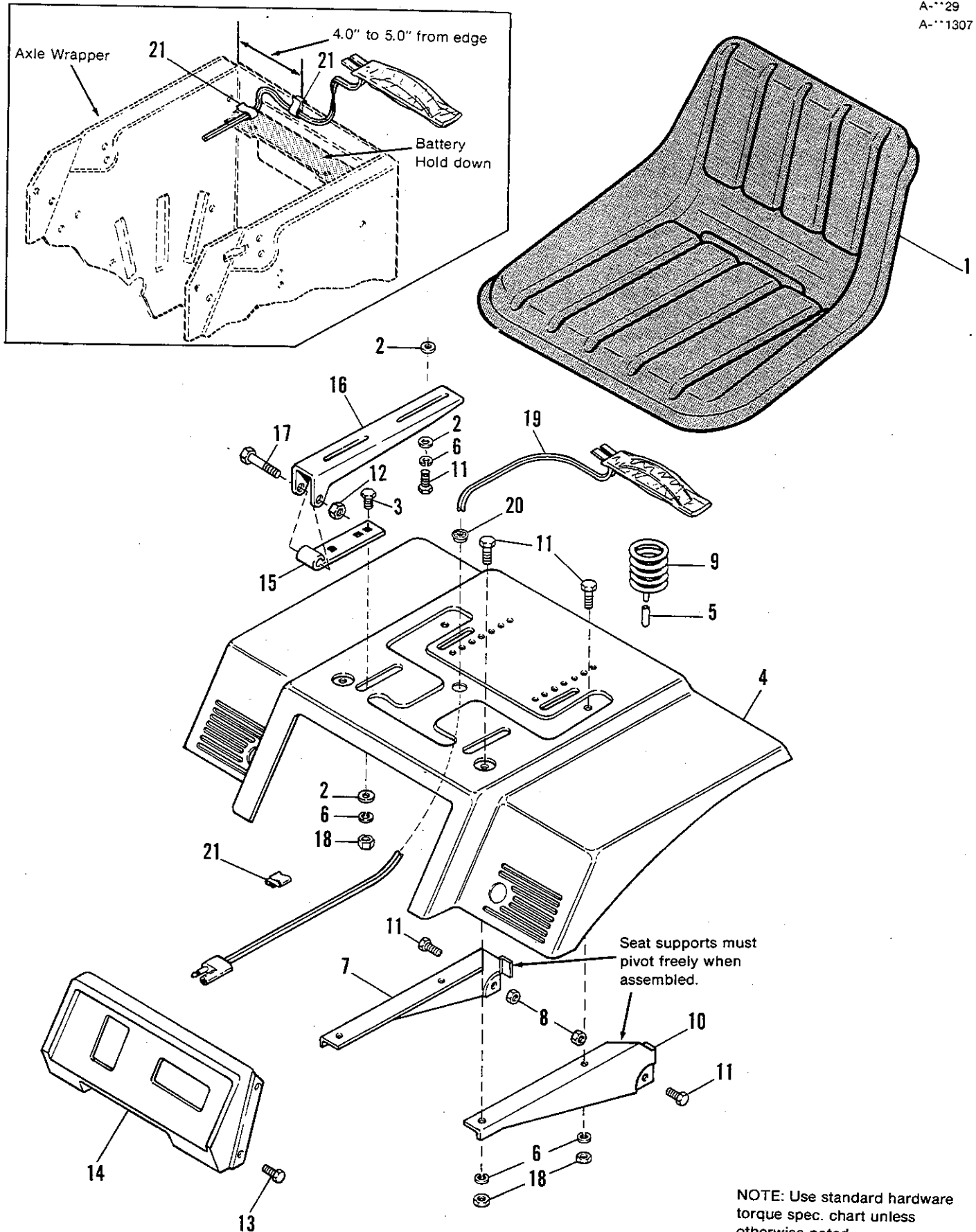
With transmission in Neutral:
 1. Loosen screw (Ref. No. 5).
 2. Rotate Arm (Ref. No. 6) until ball on switch (Ref. No. 4) drops into rear hole on arm (Ref. No. 27).
 3. Retighten screw (Ref. No. 5).



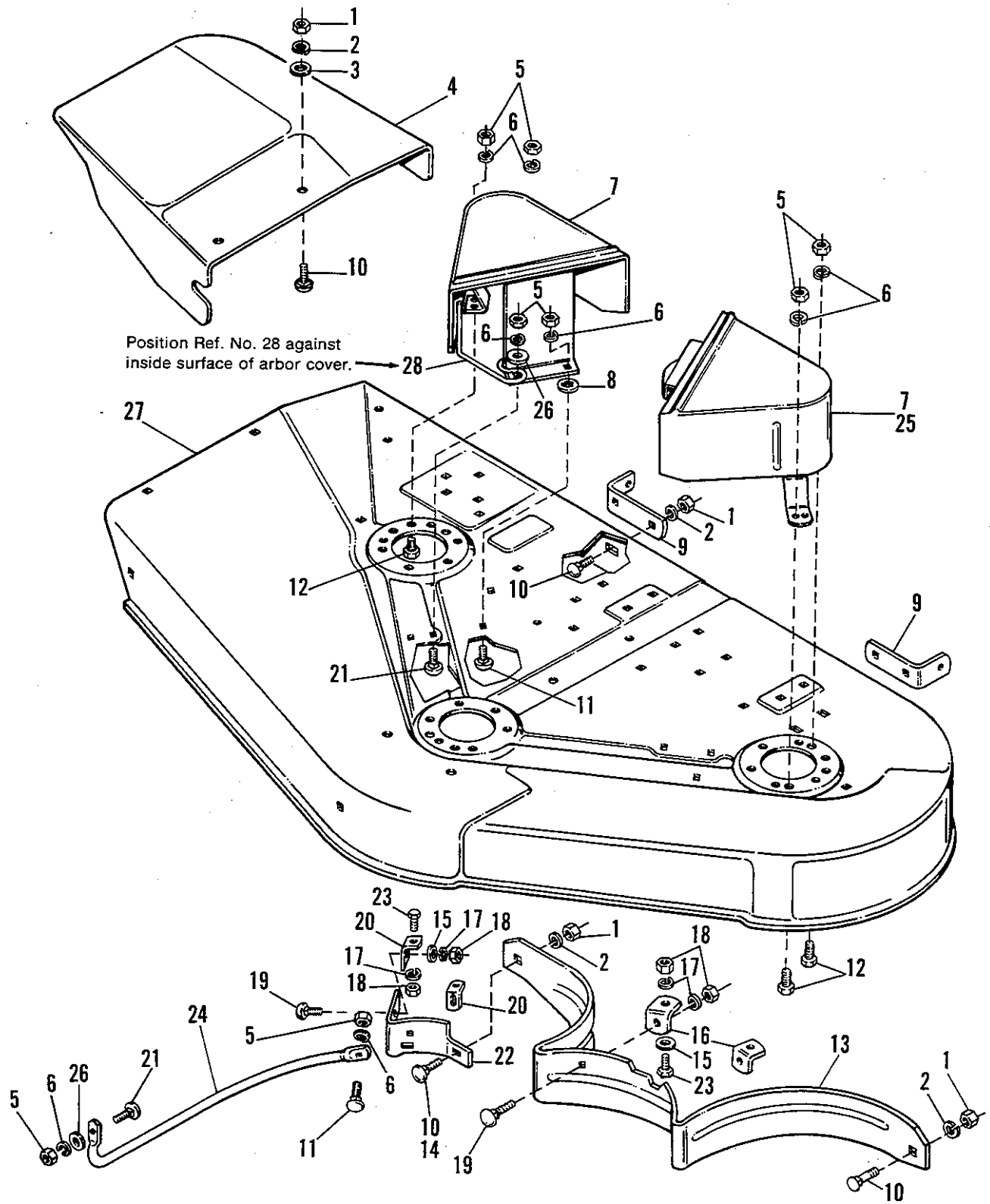
Ref. No.	Part No.	Qty.	Description
1	1673954	1	SUPPORT, Frame
2	917356	3	LOCKWASHER, 5/16
3	1917372	3	NUT, Hex, Full, 5/16-18
4	1654634	1	SWITCH, Interlock
5	1927428	10	SCREW, Hex, Taptite, 1/4-20 x 3/8
6	1655746	1	BRACKET, Switch
7	1930647	1	LOCKNUT, Hex, 9/16-18
8	1655264	1	PIVOT, Shift Lever
9	1669831	1	HOLD DOWN, Battery
10	1960283	2	CAPSCREW, Hex, 1/4-20 x 7
11	122213	1	CABLE
12	926022	2	NUT, Retaining, 1/4-20
13	927429	2	SCREW, Taptite, 1/4-20 x 5/8
14	165073	1	CLIP, Wire
15	1655522	1	CABLE
16	1917377	2	WASHER, Plain, 1/4
17	916964	2	LOCKWASHER, 1/4
18	916622	2	NUT, Hex, Full, 1/4-20
19	122023	1	COVER, Terminal
20	930222	2	CLIP, Wire
21	932747	2	TIE, Self-Locking
22	165073	1	CLIP, Speed (Mfg. No. 1691034 & 1691035 only)
23	1665238	1	BREAKER, Circuit
24	1665237	1	WIRE ASSY.
25	1685215	1	BATTERY, 39 amp.
26	1655085	1	SPACER
27	1655265	1	LEVER, Switch
28	1960044	1	WASHER
29	1921333	1	CAPSCREW, Hex, 5/16-18 x 1
30	1672661	1	HARNESS, Lower (includes Ref. No. 31)
31	1923341	2	CAPSCREW, Hex, 1/4-20 x 3/4
32	1935944	2	SCREW, Taptite, #5-40 x 3/4
33	1665522	1	WIRE ASSY. (6212.5 & 6216 only)
34	1685290	1	SOLENOID
35	1922711	2	LOCKWASHER, Ext. #10
36	1917415	2	NUT, Hex, #10-32
37	1665586	1	SWITCH, P.T.O. Interlock
38	1672654	1	MODULE - DSI INTERLOCK
39	1674153	1	DIODE ASSY.
40	1663153	1	WIRE ASSY., Diode
41	927428	2	SCREW, Hex Taptite, 1/4-20 x 3/8 (Zinc Pltd.)
42	1920263	2	NUT, Hex, 5/16-24



Ref. No.	Part No.	Qty.	Description
1	1921961	2	CAPSCREW, Hex, 1/4-20 x 1-1/4
2	1917377	2	WASHER, Plain, 1/4
3	1673058	1	DASHBOARD, Top
4	1930561	2	SCREW, #14 x 3/4
5	1916955	2	WASHER, Plain, 3/16
6	171252	1	CAP, Fuel
7	1685297	1	TANK ASSY., Fuel (Incl. Ref. Nos. 19 & 20)
8	1673012	2	LIGHT, Indicator
9	122184	1	SWITCH, Toggle
10	122203	1	KEYS, 2
11	122234	1	NUT, Hex, 5/8-32
12	918906	1	LOCKWASHER, Int., 5/8
13		1	SWITCH (See Ref. No. 14)
14	1674244	1	SWITCH ASSY, Ignition (Incl. Ref. Nos. 10, 11, 12 & 13)
15	122131	1	AMMETER
16	1676536	1	HARNESS, Upper (6212.5 & 6216 Only)
	1672664	1	HARNESS, Upper (6211 Only)
17	1654930	1	BUSHING
18	1666447	1	FITTING
19	1960112	3	CLAMP
20	1676861	1	HOSE, Fuel
21	1665301	1	BRACE, Dash
22	925592	2	SCREW, Taptite, 1/4-20 x 3/4
23	1668641	1	DASHBOARD, Bottom
24	1923358	2	LOCKNUT, Hex, 1/4-20
25	1931704	6	LOCKWASHER, Dished, 1/4
26	1929783	4	SCREW, Taptite, 1/4-20 x 1
27	1665853	2	LAMP, Sealed Beam
28	1665813	2	BRACKET, Headlight Support
29	1665253	10	NUT, Pal
30	1673013	2	NUT, Speed, Push on
31	1665751	1	BAFFLE, Engine, Front (6212.5 & 6216 Only)
32	1921966	2	CAPSCREW, Hex, 3/8-16 x 7/8
33	1930651	2	LOCKNUT, Hex, 3/8-16
34	1669400	1	HOOD & GRILLE ASSY.
35	173335	2	PAD
36	173206	1	FILTER, Fuel
37	1667248	4	CLIP, Canoe
38	1665253	6	LOCKNUT, Painut #10-24
39	1960253	4	BOLT, Carriage
40	1672123	2	EDGING, Lower Dash
41	1665790	1	SCREEN, Grille
42	1917415	2	NUT, Hex, #10-32
43	1922711	2	LOCKWASHER, #10, Ext. Tooth.
44	1664897	1	WASHER, Foam (6212.5, 6216)

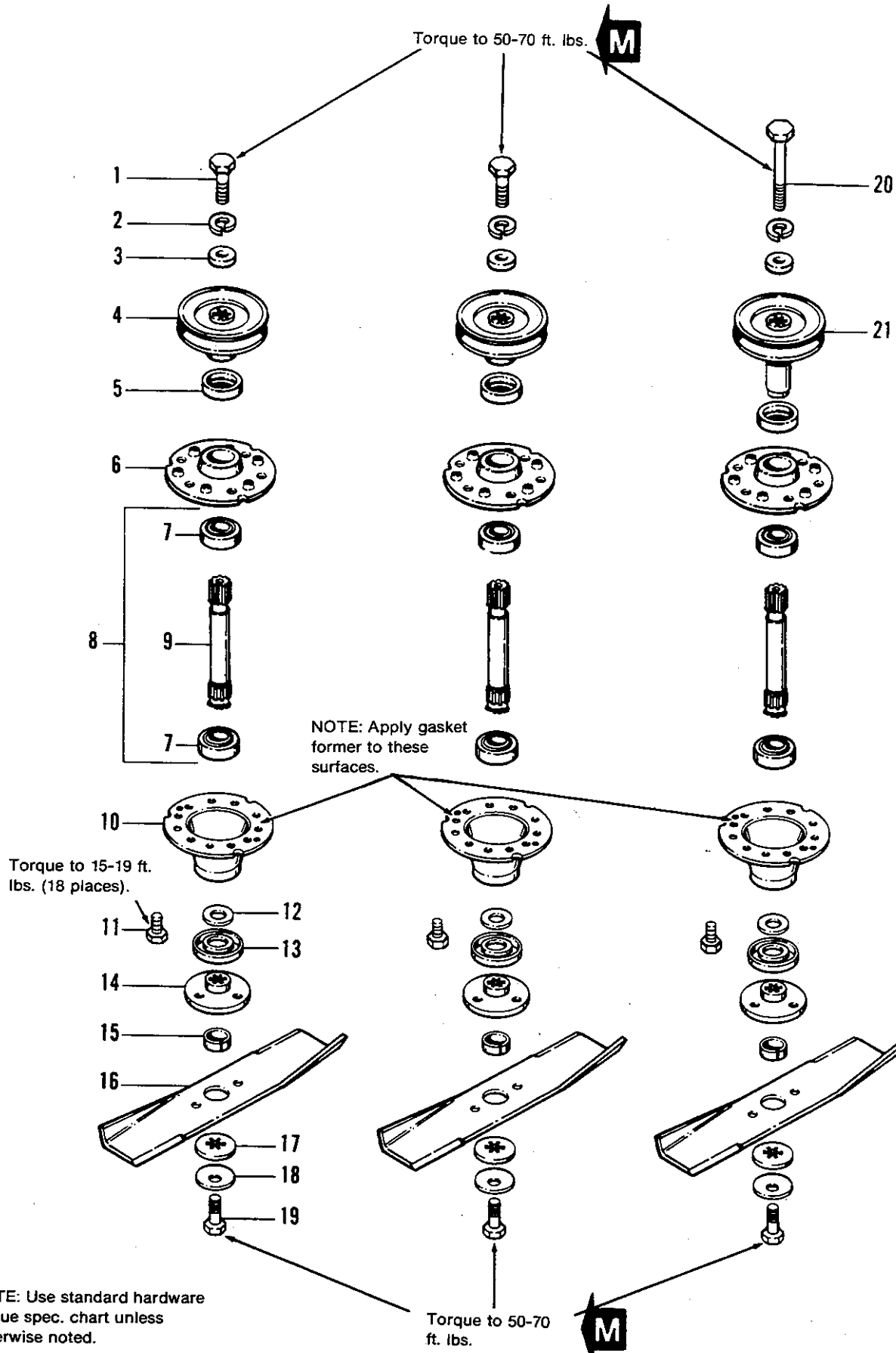


Ref. No.	Part No.	Qty.	Description
1	1676540	1	SEAT
2	1917642	8	WASHER, Plain, 5/16
3	1921333	4	CAPSCREW, Hex, 5/16-18 x 1.0
4	1676537	1	DECK, Seat
5	1666691	2	COVER, Wire
6	917356	12	LOCKWASHER, 5/16
7	1701736	1	SUPPORT, Seat, R.H.
8	1923362	2	LOCKNUT, Hex, 5/16-18
9	1666690	2	SPRING, Seat
10	1701737	1	SUPPORT, Seat, L.H.
11	1921332	10	CAPSCREW, Hex, 5/16-18 x 3/4
12	1930651	2	LOCKNUT, Hex, 3/8-16
13	1925003	4	SCREW, Hex, Taptite, 1/4-20 x 1/2
14	1675073	1	PANEL, Shift
15	1678415	2	HINGE, Lower
16	1701559	2	HINGE, Upper
17	1923701	2	CAPSCREW, Hex, 3/8-16 x 2
18	1917372	4	NUT, Hex 5/16-18
19	1671703	1	SWITCH, Seat
20	1676624	1	BUSHING, Universal
21	165073	2	CLIP



Ref. No.	Part No.	Qty.	Description
1	916950	8	NUT, Hex, 3/8-16 (Qty. 7 used on 1690709)
2	916965	8	LOCKWASHER, 3/8-16 (Qty. 7 used on 1690709)
3	917378	2	WASHER, Plain, 3/8
4	1656049	1	DEFLECTOR
5	1917372	10	NUT, Hex, 5/16-18 (Qty. 8 used on 1690708)
6	917356	10	LOCKWASHER, 5/16 (Qty. 8 used on 1690708)
7	1702214	2	ARBOR COVER ASSY., R.H. (Qty. 1 on 1690708 Only)
8	933988	2	PUSHNUT, 5/16 (Qty. 4 used on 1690709)
9	1603264	2	BRACKET, Roller Support
10	1931348	8	BOLT, Carriage, 3/8-16 x 3/4 (Qty. 6 used on 1690709)
11	1931333	5	BOLT, Carriage, 5/16-18 x 3/4 (Qty. 3 used on 1690708)
12	1921333	4	CAPSCREW, Hex, 5/16-18 x 3/4
13	1608135	1	BAFFLE (Mfg. No. 1690708)
	1608327	1	BAFFLE (Mfg. No. 1690709)
14	1931350	1	BOLT, Carriage, 3/8-16 x 1 (1690709 only)
15	1917377	4	WASHER, 1/4
16	1608331	2	CLIP, Baffle
17	916964	8	LOCKWASHER, 1/4
18	916622	8	NUT, Hex, 1/4-20
19	1923333	4	BOLT, Carriage, 1/4-20 x 5/8
20	108186	2	CLIP GUARD & BAFFLE
21	1931335	2	BOLT, Carriage, 5/16-18 x 1
22	1665709	1	BAFFLE, Discharge
23	1923341	6	CAPSCREW, Hex, 1/4-20 x 3/4
24	1665562	1	GUARD, Mower Discharge
25	1702213	1	ARBOR COVER ASSY., L.H. (1690708), 42"
26	1919381	2	WASHER, 11/32 x 1
27	*1685156	1	42" ROTARY MOWER HOUSING KIT (Mfg. No. 1690708)
	*1685154	1	48" ROTARY MOWER HOUSING KIT (Mfg. No. 1690709)
28	1666888	1	STOP, Belt

*Ref. No. 27 includes decals.

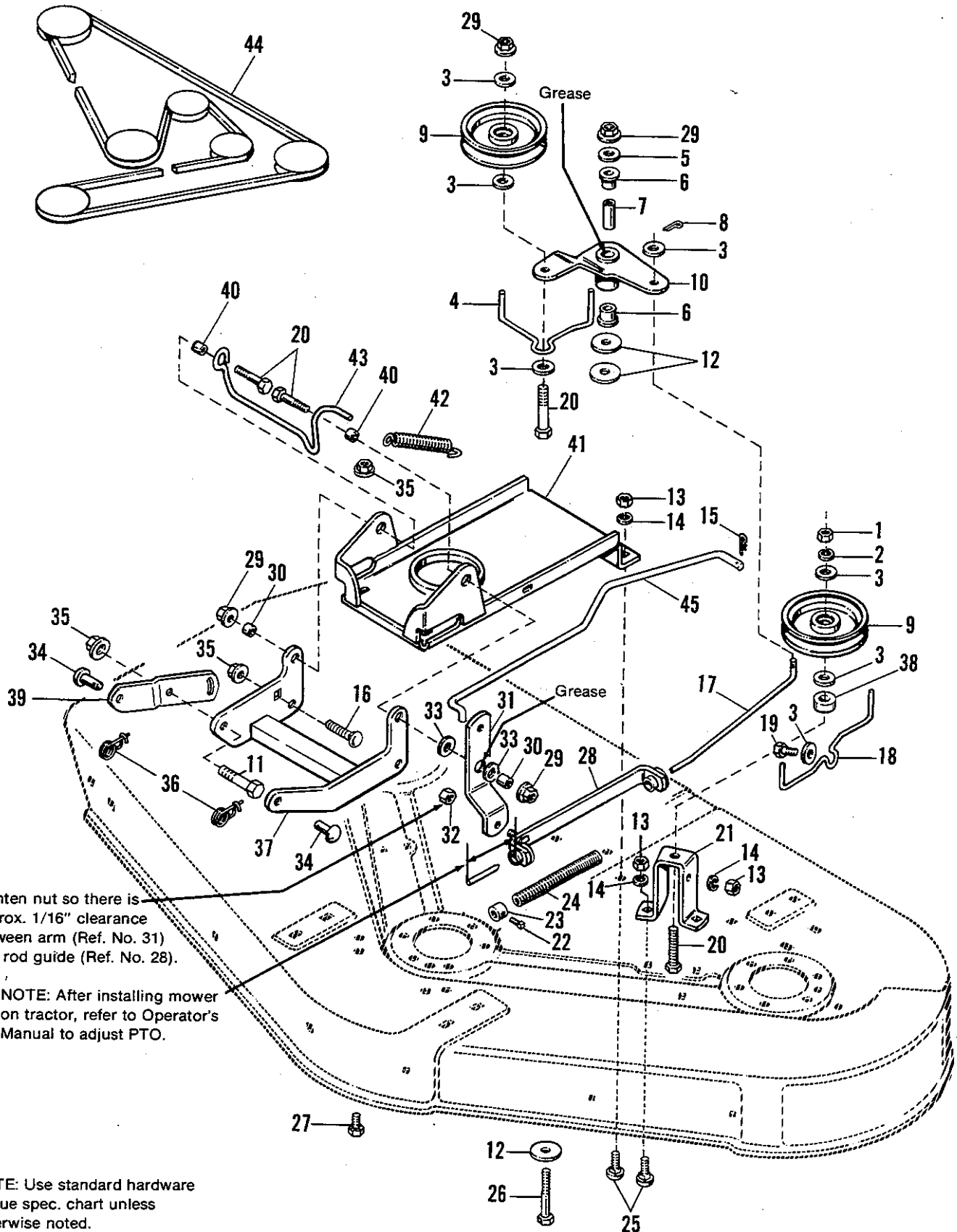


Ref. No.	Part No.	Qty.	Description
1	1936723	2	CAPSCREW, Hex, 7/16-14 x 1-3/4
2	1918199	3	LOCKWASHER, 7/16
3	1933263	3	WASHER, Plain, 29/64 x 1-1/4 x 1/4
4	1665476	2	PULLEY ASSY.
5	1657969	3	SHIELD, Bearing Upper
6	1655729	3	HOUSING, Top
7	108202	6	BEARING
8	1685251	3	SHAFT & BEARING ASSY. (Incl. Ref. Nos. 7, 9 & 15)
9	1685245	3	SHAFT (Incl. Ref. No. 15)
10	1655728	3	HOUSING, Bottom
11	1664847	18	SCREW, Hex, Taptite, 5/16-18 x 3/4
12	1700230	3	WASHER, Shim
13	1700229	3	SHIELD, Grass
14	1655777	3	ADAPTER, Blade
15	1672132	3	COLLAR, Mower Arbor
16	1656146	3	BLADE, 48" Mower
	1656147	3	BLADE, 42" Mower
17	1656927	3	WASHER, Spline
18	1656916	3	WASHER, Spring
19	1923491	3	CAPSCREW, Hex, 7/16-14 x 1
20	1930585	1	CAPSCREW, Hex, 7/16-14 x 3-1/2
21	1665347	1	PULLEY ASSY., L.H.

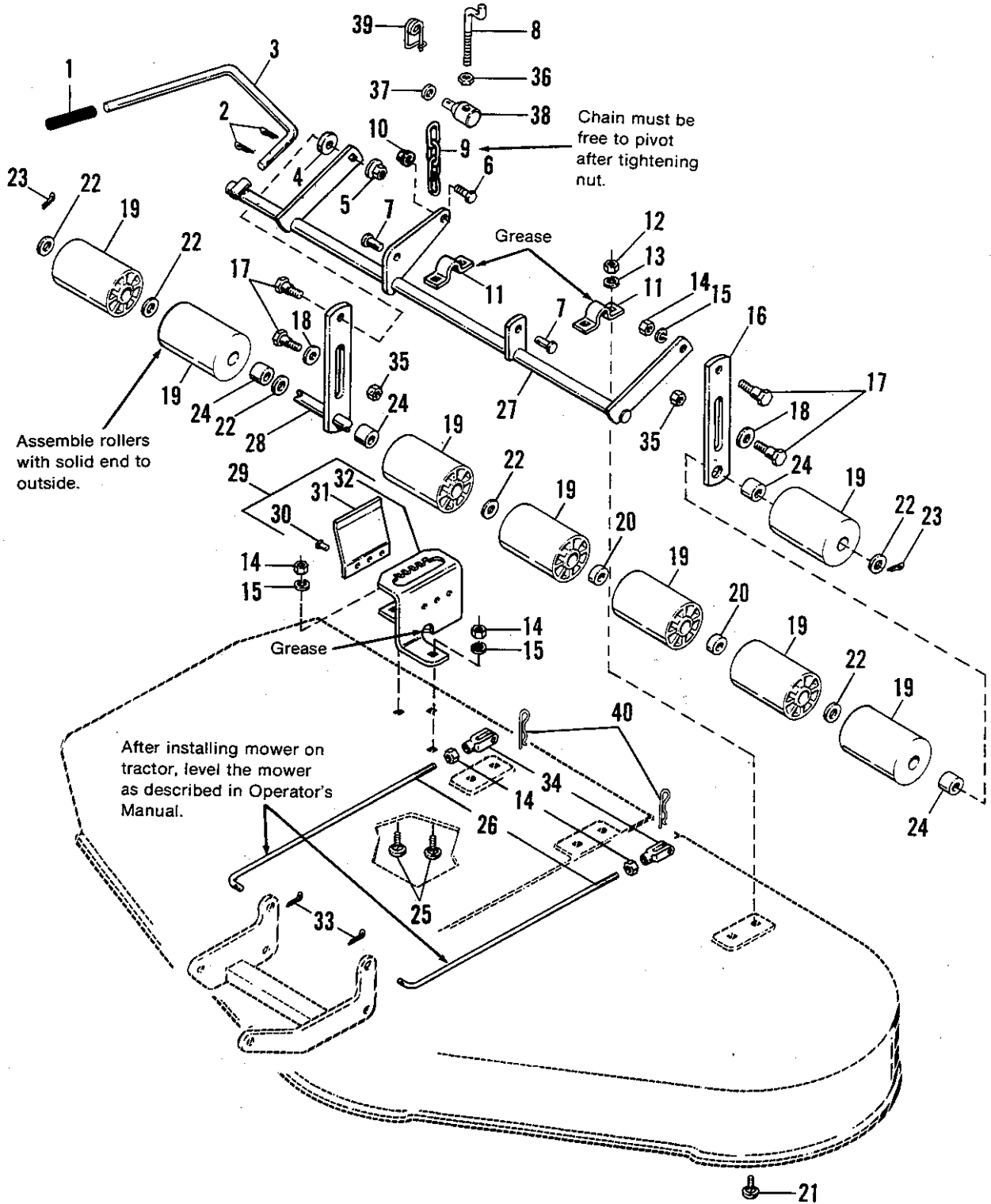
ASSEMBLY PROCEDURES

- A. Press (2) bearings (Ref. No. 7) with land riding seal (see note below) facing up over shafts (Ref. No. 9) using pressure only on the inner race of the bearing.
- B. Assemble upper and lower arbor housings (Ref. Nos. 6 & 10) over bearings. Must be careful that housings do not cock on bearings. When upper and lower housing flanges come together proper alignment of holes in housing flanges are accomplished by aligning knockouts in lower housing flange with mating holes in upper housing flange. Also half holes in outer edge must match.
- C. Seal between flanges of upper arbor housing and lower arbor housing with gasket eliminator. Remove contaminants such as grease, heavy oils and dirt from flange surfaces before assembly. Avoid lateral movement between flange surfaces during assembly.

NOTE: Land riding seal is side of bearing without steel shield. If bearing has shield on both sides, it can be installed either way.

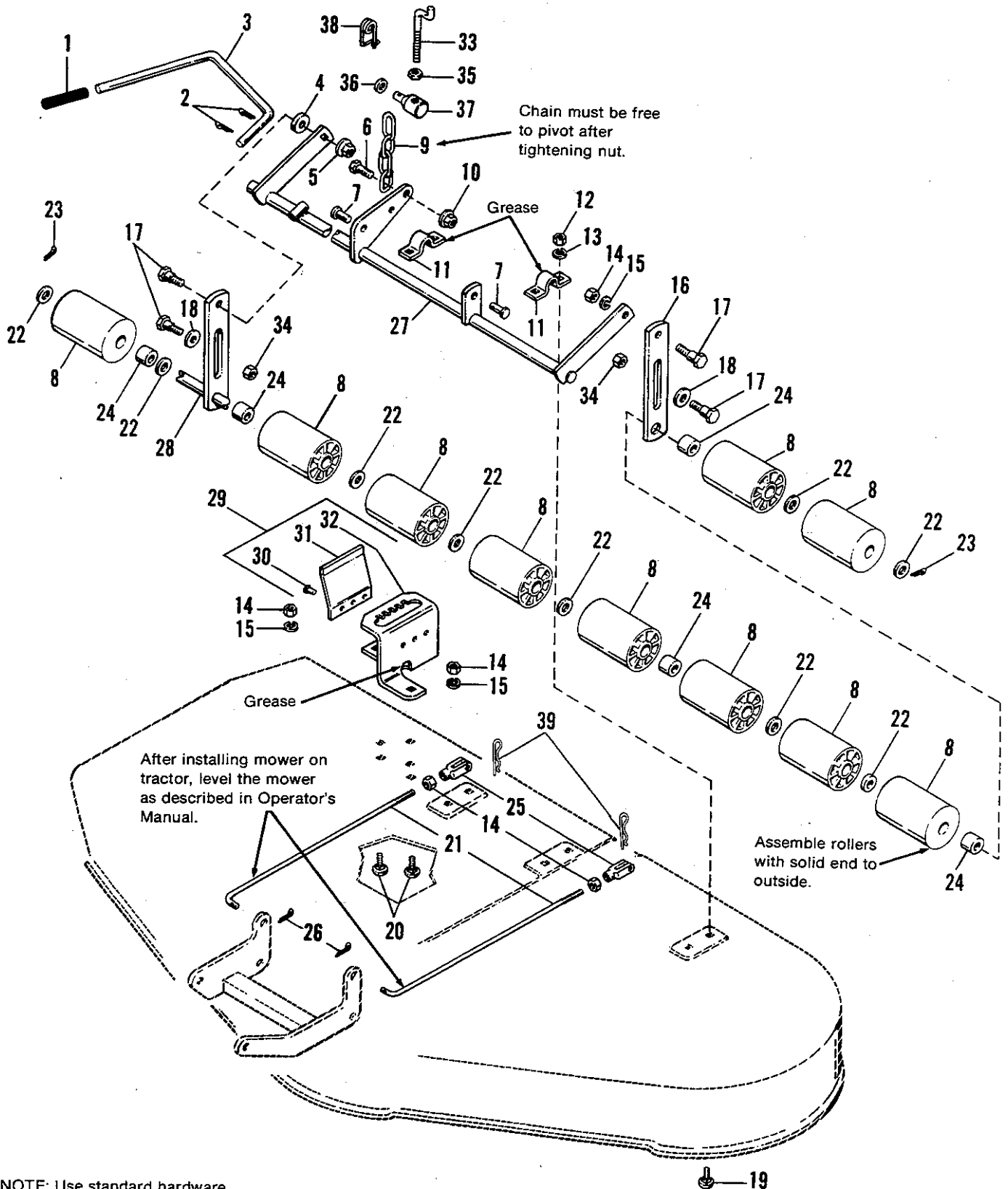


Ref. No.	Part No.	Qty.	Description
1	916950	1	NUT, Hex, 3/8-16
2	916965	1	LOCKWASHER, 3/8
3	1917642	7	WASHER, Plain, 5/16
4	1669306	1	STOP, Belt
5	917378	1	WASHER, 3/8
6	1663114	2	BUSHING
7	1657242	1	SPACER
8	1918447	1	PIN, Cotter, 3/32 x 3/4
9	171247	2	PULLEY, Idler
10	1701861	1	LEVER ASSY., Clutch
11	1920677	1	CAPSCREW, Hex Hd. 7/16-14 x 1-1/4
12	924356	3	WASHER, Special
13	1917372	5	NUT, Hex, 5/16-18
14	917356	5	LOCKWASHER, 5/16
15	1918196	1	PIN, Quick, 1-7/8
16	1960135	1	BOLT, Carriage 7/16-14 x 1-1/4
17	1668041	1	ROD, Clutch
18	1669259	1	STOP, Belt
19	1921333	1	CAPSCREW, Hex, 5/16-18 x 1
20	1921971	4	CAPSCREW, Hex, 3/8-16 x 1-3/4
21	1665649	1	SUPPORT, Idler
22	1928804	1	SETSCREW, Sq.Hd, 1/4-20 x 3/8
23	8191022	1	COLLAR, Set
24	1668282	1	SPRING
25	1931333	4	BOLT, Carriage, 5/16-18 x 3/4
26	1928957	1	CAPSCREW, 3/8-16 x 2-3/4
27	1960043	2	CAPSCREW, Hex, 7/16-14 x 1 UNC
28	1668278	1	GUIDE ASSY., Rod
29	1930645	4	NUT, Hex, Flange, 3/8-16
30	1674440	2	SPACER
31	1665624	1	ARM, Pivot
32	1928698	1	NUT, Jam, Ctr.Lock, 5/16-18
33	1919387	2	WASHER, Plain, 5/8
34	156306	2	PIN
35	1935041	4	NUT, Whizlock, 7/16-14 x 14 UNC
36	176012	2	PIN, Safety
37	1674443	1	ARM ASSY., Rocker
38	174870	1	SPACER
39	1674441	1	ARM, Rocker
40	118335	2	SPACER
41	1677079	1	SUPPORT ASSY.
42	159159	1	SPRING, Tension
43	1701534	1	ROD, Brake (1690708 only) 42" Mower
	1701533	1	ROD, Brake (1690709 only) 48" Mower
44	1668066	1	V-BELT, Mower Drive (1690708 Only) 42" Mower
	1665638	1	V-BELT, Mower Drive (1690709 Only) 48" Mower
45	1669160	1	ROD, Clutch, Tractor P.T.O.



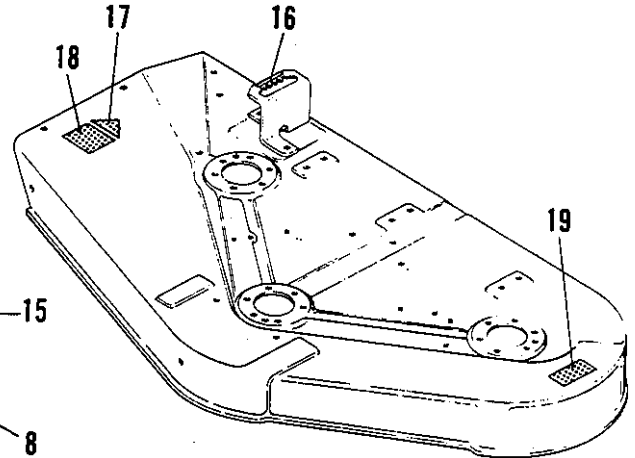
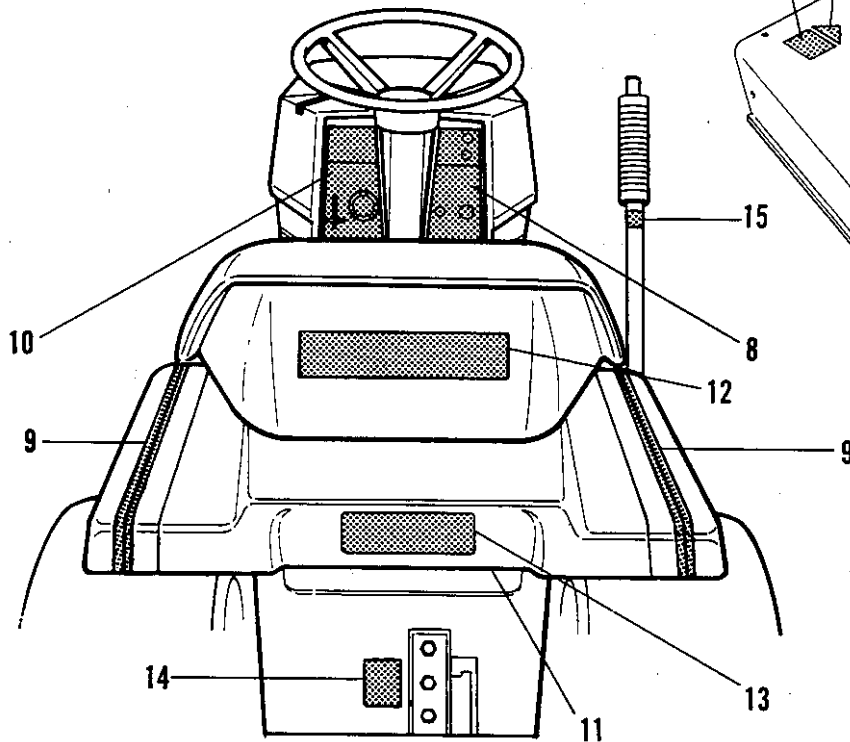
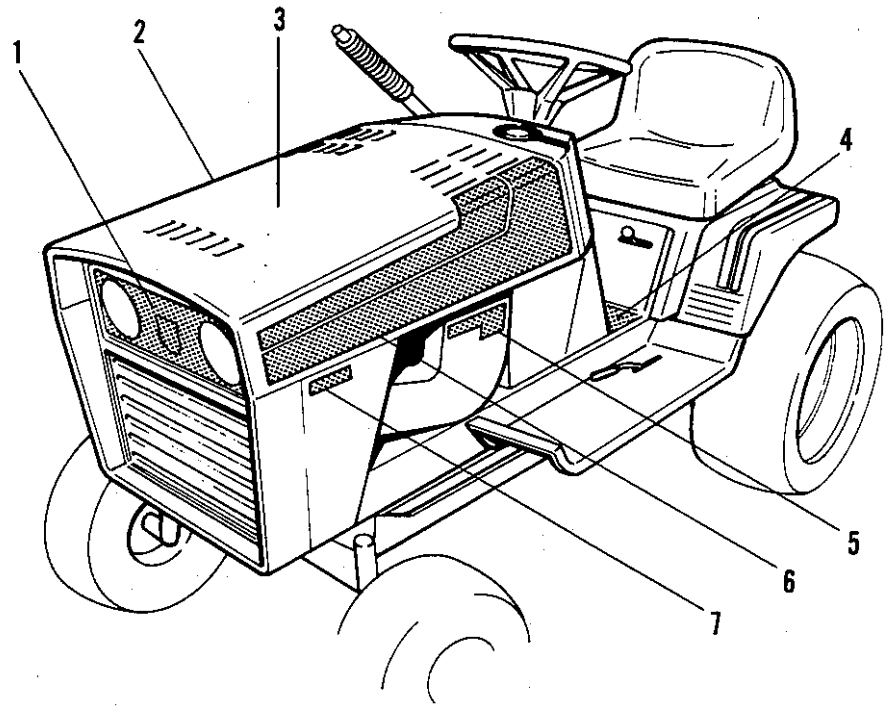
NOTE: Use standard hardware torque spec. chart unless otherwise noted.

Ref. No.	Part No.	Qty.	Description
1	176933	1	GRIP
2	1918452	2	PIN, Cotter, 1/8 x 1
3	1656412	1	LEVER, Control
4	922755	1	WASHER, Plain, 13/32
5	1928352	1	LOCKNUT, Hex, Flange, Whiz, 3/8-16
6	1921333	1	CAPSCREW, Hex, 5/16-18 x 1
7	1923087	2	PIN, Clevis
8	1673665	1	ROD, Lift
9	1669241	1	CHAIN, Lift
10	1935048	1	LOCKNUT, Flange, 5/16-18
11	1665374	2	STRAP
12	1917372	4	NUT, Hex, 5/16-18
13	917356	4	LOCKWASHER, 5/16
14	916950	6	NUT, Hex, 3/8-16
15	916965	3	LOCKWASHER, 3/8
16	1603263	1	BAR, Roller
17	1665693	4	BOLT, Shoulder, 3/8-16
18	1924361	2	WASHER, Plain, 1/2
19	1668513	8	ROLLERS
20	172914	2	SPACER
21	1931333	4	BOLT, Carriage, 5/16-18 x 3/4
22	1919387	6	WASHER, 25/32 x 1-1/4
23	1918458	2	PIN, Cotter, 3/16 x 1
24	1602946	4	SPACER
25	1931348	3	BOLT, Carriage, 3/8-16 x 3/4
26	1665417	2	ROD, Adj.
27	1685217	1	ARM ASSY., Mower
28	1668814	1	SHAFT ASSY., Roller
29	1668828	1	QUADRANT ASSY. (Incl. Ref. Nos. 30, 31 & 32)
30	910542	3	RIVET
31	1663222	1	SPRING
32		1	QUADRANT (See Ref. No. 29)
33	1918447	2	PIN, Cotter, 3/32 x 3/4
34	108157	2	CLEVIS, Adj.
35	1919439	2	LOCKNUT, 3/8-16
36	1920161	1	NUT, Jam 5/16-18
37	1917642	1	WASHER, Plain 5/16
38	172141	1	PIVOT
39	176012	1	CLIP, Pin, Safety
40	1960074	2	CLIP, Hairpin
41	1685247	1	LIFT ROD KIT (Incl. Ref. Nos. 8, 36, 37, 39 & 39)



NOTE: Use standard hardware torque spec. chart unless otherwise noted.

Ref. No.	Part No.	Qty.	Description
1	176933	1	GRIP
2	1918452	2	PIN, Cotter, 1/8 x 1
3	1656412	1	LEVER, Control
4	922755	1	WASHER, Plain, 13/32
5	1928352	1	LOCKNUT, Hex, Flange, Whiz, 3/8-16
6	1921333	1	CAPSCREW, Hex, 5/16-18 x 1
7	1923087	2	PIN, Clevis
8	1668513	10	ROLLERS
9	1669241	1	CHAIN, Lift
10	1935048	1	LOCKNUT, Flange, 5/16-18
11	1665374	3	STRAP
12	1917372	6	NUT, Hex, 5/16-18
13	917356	6	LOCKWASHER, 3/8
14	916950	6	NUT, Hex, 3/8-16
15	916965	4	LOCKWASHER, 3/8
16	1603263	1	BAR, Roller
17	1665693	4	BOLT, Shoulder, 3/8-16
18	1924361	2	WASHER, Plain, 1/2
19	1931333	6	BOLT, Carriage, 5/16-18 x 3/4
20	1931348	3	BOLT, Carriage, 3/8-16 x 3/4
21	1665417	2	ROD, Adj.
22	1919387	9	WASHER, 25/32 x 1-1/4
23	1918458	2	PIN, Cotter, 3/16 x 1
24	1602946	5	SPACER
25	108157	2	CLEVIS, Adj.
26	1918447	2	PIN, Cotter, 3/32 x 3/4
27	1668718	1	ARM ASSY., Mower
28	1668716	1	SHAFT ASSY., Roller
29	1668828	1	QUADRANT ASSY. (Incl. Ref. Nos. 30, 31 & 32)
30	910542	3	RIVET
31	1663222	1	SPRING
32		1	QUADRANT (See Ref. No. 29)
33	1673665	1	ROD, Lift, Short
34	1919439	2	LOCKNUT, ESNA, 3/8-16
35	1920161	1	NUT, Jam 5/16-8
36	1917642	1	WASHER, Plain 5/16
37	172141	1	PIVOT
38	176012	1	CLIP, Pin, Safety
39	1960074	2	CLIP, Hair Pin
40	1685247	1	LIFT ROD KIT (Incl. Ref. Nos. 33, 35, 37, 37 & 38)



Ref. No.	Part No.	Qty.	Description
1	1669356	1	DECAL, Grille
2	1669354	1	DECAL, Hood Stripe, R.H.
3	1679972	1	DECAL, Drive Belts
4	1676929	1	DECAL, Shift Pattern
5	1669577	2	DECAL, Engine, 16 H.P.
	1679143	2	DECAL, Engine, 12.5 H.P.
6	1669355	1	DECAL, Hood Stripe, L.H.
7	1674503	1	DECAL, 6211
	1679965	1	DECAL, 6212.5
	1674504	1	DECAL, 6216
8	1671394	1	DECAL, Dash, R.H. (6211 Only)
	1669357	1	DECAL, Dash, R.H. (6212.5 & 6216 Only)
9	1657131	2	DECAL, Seat Deck
10	1666927	1	DECAL, Dash, L.H. (6211 Only)
	1666907	1	DECAL, Dash, L.H. (6212.5 & 6216 Only)
11	1670969	1	DECAL, Battery
12	153166	1	DECAL, Seat (<i>Simplicity</i>)
13	1669366	1	DECAL, Cast Iron Trans.
14	1669433	1	DECAL, Rear P.T.O.
15	175216	1	DECAL, Lift Lever
16	1656855	1	DECAL, Mower Height
17		1	DECAL, OPE!
18	1676922	1	DECAL, Warning
19	1676921	1	DECAL, Danger
Not Shown			
	1676930	1	DECAL, Caution, Variator Control (Located on lower right hand dash)

Hardware Identification & Torque Specifications

Common Hardware Types

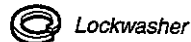
Hex Head Capscrew



Carriage Bolt



Washer



Lockwasher



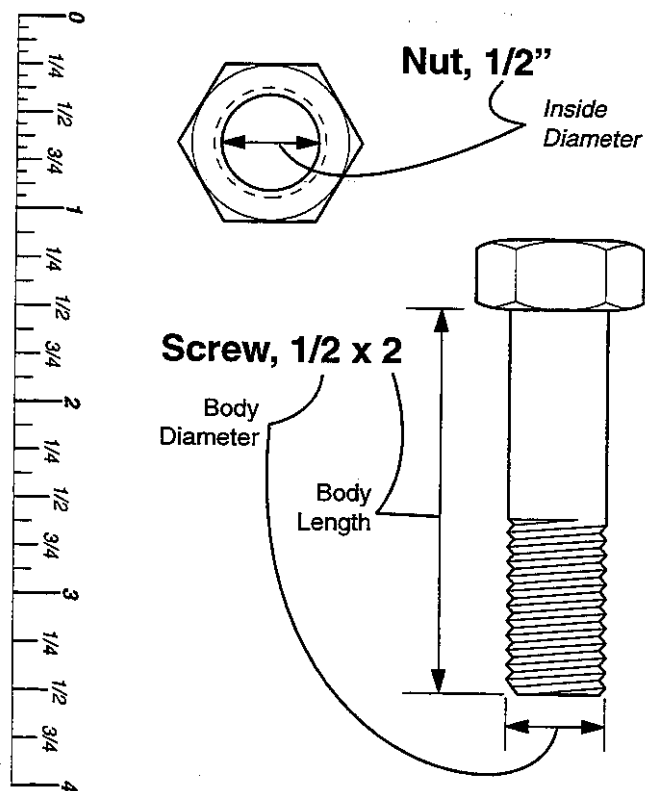
Hex Nut

Standard Hardware Sizing

When a washer or nut is identified as $1/2"$, this is the *Nominal size*, meaning the *inside diameter* is $1/2$ inch; if a second number is present it represents the *threads per inch*

When bolt or capscrew is identified as $1/2 - 16 \times 2"$, this means the *Nominal size*, or *body diameter* is $1/2$ inch; the second number represents the *threads per inch* (16 in this example, and the final number is the *body length* of the bolt or screw (in this example 2 inches long).

The guides and ruler furnished below are designed to help you select the appropriate hardware and tools.



Torque Specification Chart

FOR STANDARD MACHINE HARDWARE (Tolerance $\pm 20\%$)

Hardware Grade	No Marks		SAE Grade 2		SAE Grade 5		SAE Grade 8	
	in/lbs	Nm.	in/lbs	Nm.	in/lbs	Nm.	in/lbs	Nm.
8-32	19	2.1	30	3.4	41	4.6		
8-36	20	2.3	31	3.5	43	4.9		
10-24	27	3.1	43	4.9	60	6.8		
10-32	31	3.5	49	5.5	68	7.7		
1/4-20	66	7.6	8	10.9	12	16.3		
1/4-28	76	8.6	10	13.6	14	19.0		
5/16-18	11	15.0	17	23.1	25	34.0		
5/16-24	12	16.3	19	25.8	27	34.0		
3/8-16	20	27.2	30	40.8	45	61.2		
3/8-24	23	31.3	35	47.6	50	68.0		
7/16-14	30	40.8	50	68.0	70	95.2		
7/16-20	35	47.6	55	74.8	80	108.8		
1/2-13	50	68.0	75	102.0	110	149.6		
1/2-20	55	74.8	90	122.4	120	163.2		
9/16-12	65	88.4	110	149.6	150	204.0		
9/16-18	75	102.0	120	163.2	170	231.2		
5/8-11	90	122.4	150	204.0	220	299.2		
5/8-18	100	136	180	244.8	240	326.4		
3/4-10	160	217.6	260	353.6	386	525.0		
3/4-16	180	244.8	300	408.0	420	571.2		
7/8-9	140	190.4	400	544.0	600	816.0		
7/8-14	155	210.8	440	598.4	660	897.6		
1-8	220	299.2	580	788.8	900	1,244.0		
1-12	240	326.4	640	870.4	1,000	1,360.0		

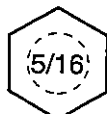
NOTES

- These torque values are to be used for all hardware excluding: locknuts, self-tapping screws, thread forming screws, sheet metal screws and socket head setscrews.
- Recommended seating torque values for locknuts:
 - for prevailing torque locknuts - use 65% of grade 5 torques.
 - for flange whizlock nuts and screws - use 135% of grade 5 torques.
- Unless otherwise noted on assembly drawings, all torque values must meet this specification.

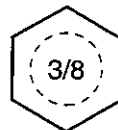
Wrench & Fastener Size Guide



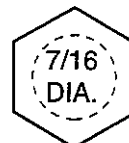
1/4" Bolt or Nut
Wrench—7/16"



5/16" Bolt or Nut
Wrench—1/2"



3/8" Bolt or Nut
Wrench—9/16"



7/16" Bolt or Nut
Wrench (Bolt)—5/8"
Wrench (Nut)—11/16"



1/2" Bolt or Nut
Wrench—3/4"



Simplicity

MANUFACTURING, INC.

500 N Spring Street / PO Box 997
Port Washington, WI 53074-0997 USA