

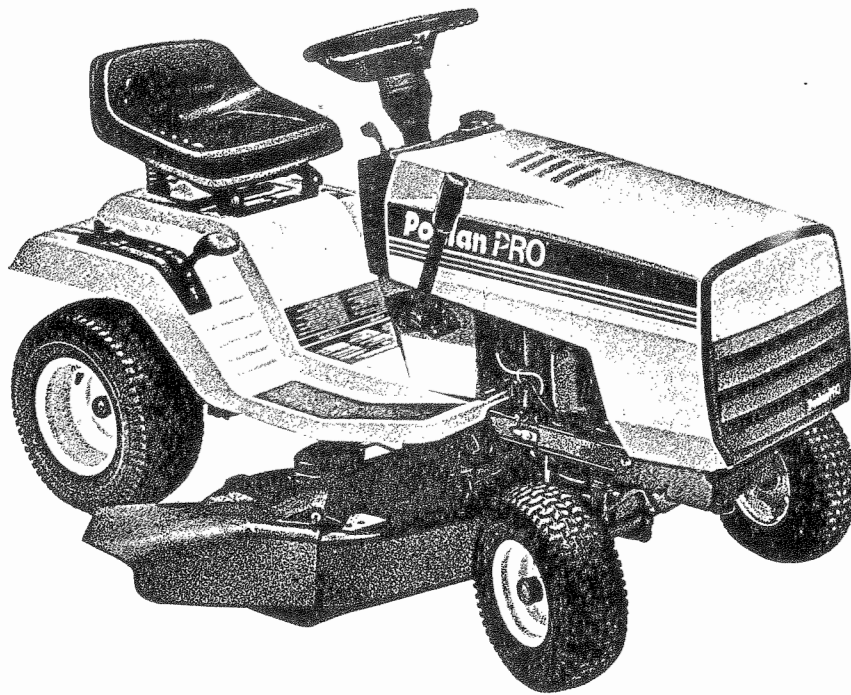
IMPORTANT MANUAL

Do Not Throw Away

Poulan

PROTM

"1992"



REPAIR PARTS MANUAL

MODEL:

PP1136A

LAWN TRACTOR

ORIGINAL FILE COPY

*Always Wear Eye Protection During Operation***POULAN PRO**

Shreveport, Louisiana 71139-9329

532134610 11.16.91
Printed in U.S.A.

HOW TO USE THIS MANUAL

This manual is designed to provide the customer with a means to identify the parts on his/her tractor when ordering repair parts. The illustrations may or may not represent the actual assemblies; therefore, it is not recommended to use this manual as a guide to assemble or disassemble the tractor. Some hardware and parts are drawn larger in order to more readily identify them.

Each tractor has its own model number.

The model number for your tractor can be found on the fender under the seat.

When ordering parts, always give the following information:

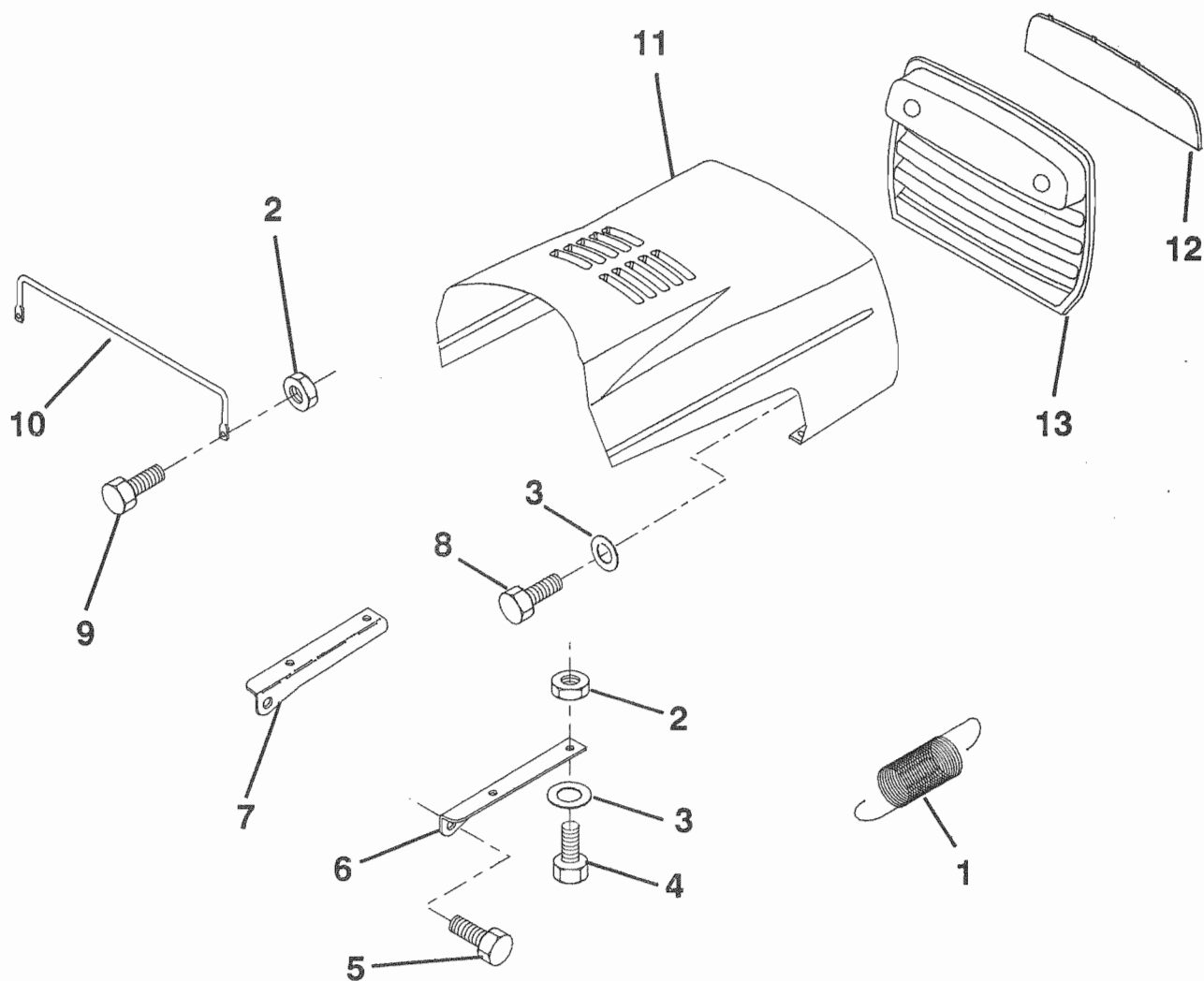
- Product — "Lawn Tractor"
- Model Number — "PP1136"
- Part Number
- Part Description

TABLE OF CONTENTS

BRAKE/REAR MOWER LIFT ASM.	13
DASH	8
DECALS/WHEELS	17
ELECTRICAL	4-5
ENGINE/THROTTLE	10
FENDER/CHASSIS	6
FRONT AXLE	12
GROUND DRIVE	14
HOOD	3
MOWER DECK	18-19
MOWER LIFT LEVER	15
SEAT	7
SECTOR GEAR/AXLE SUPPORT	11
STEERING WHEEL	9
TRANSAXLE	16

ILLUSTRATED PARTS BREAKDOWN

HOOD

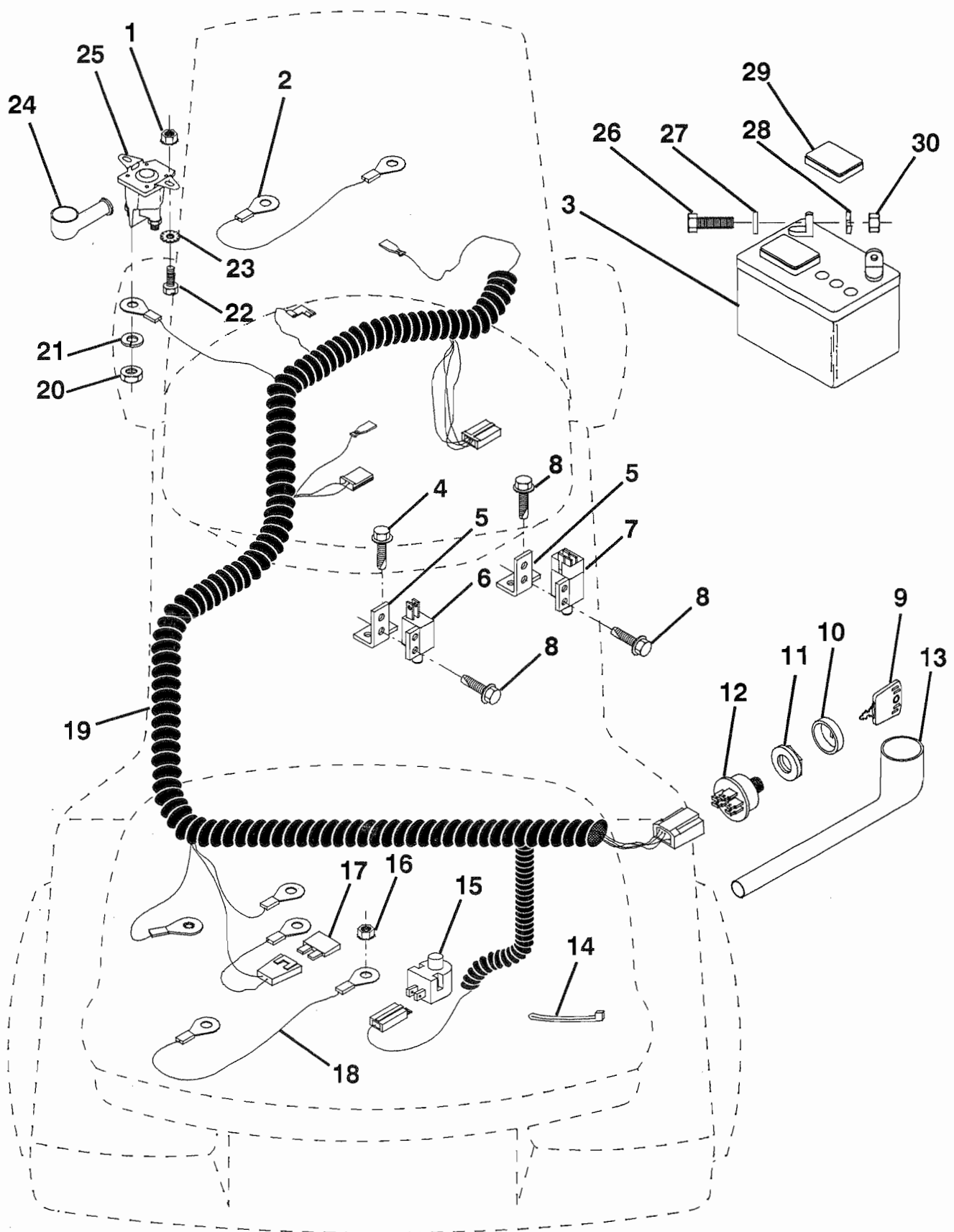


KEY NO.	PART NO.	DESCRIPTION	KEY NO.	PART NO.	DESCRIPTION
1	532124657	Extension, Spring	8	817411310	Screw, Fin. Hex #13-16 Hi-Lo x 5/8
2	873510400	Nut, Hex, Keps 1/4-20	9	874780412	Bolt, Hex Fin. 1/4-20 x 3/4 Gr. 5
3	819091016	Washer, 9/32 x 5/8 x 16 Ga.	10	532123693	Brace, Hood
4	874780410	Bolt, Hex Fin. 1/4-20 UNC 5/8 Gr. 5	11	532125386	Hood
5	532126675	Bolt, Shoulder	12	532122035	Lens, Plate, Grill
6	532122549	Bracket, Hood R. H.	13	532126268	Grill
7	532122548	Bracket, Hood L.H.			

HARDWARE SHOWN LARGER FOR EASIER IDENTIFICATION

ILLUSTRATED PARTS BREAKDOWN

ELECTRICAL



ILLUSTRATED PARTS BREAKDOWN

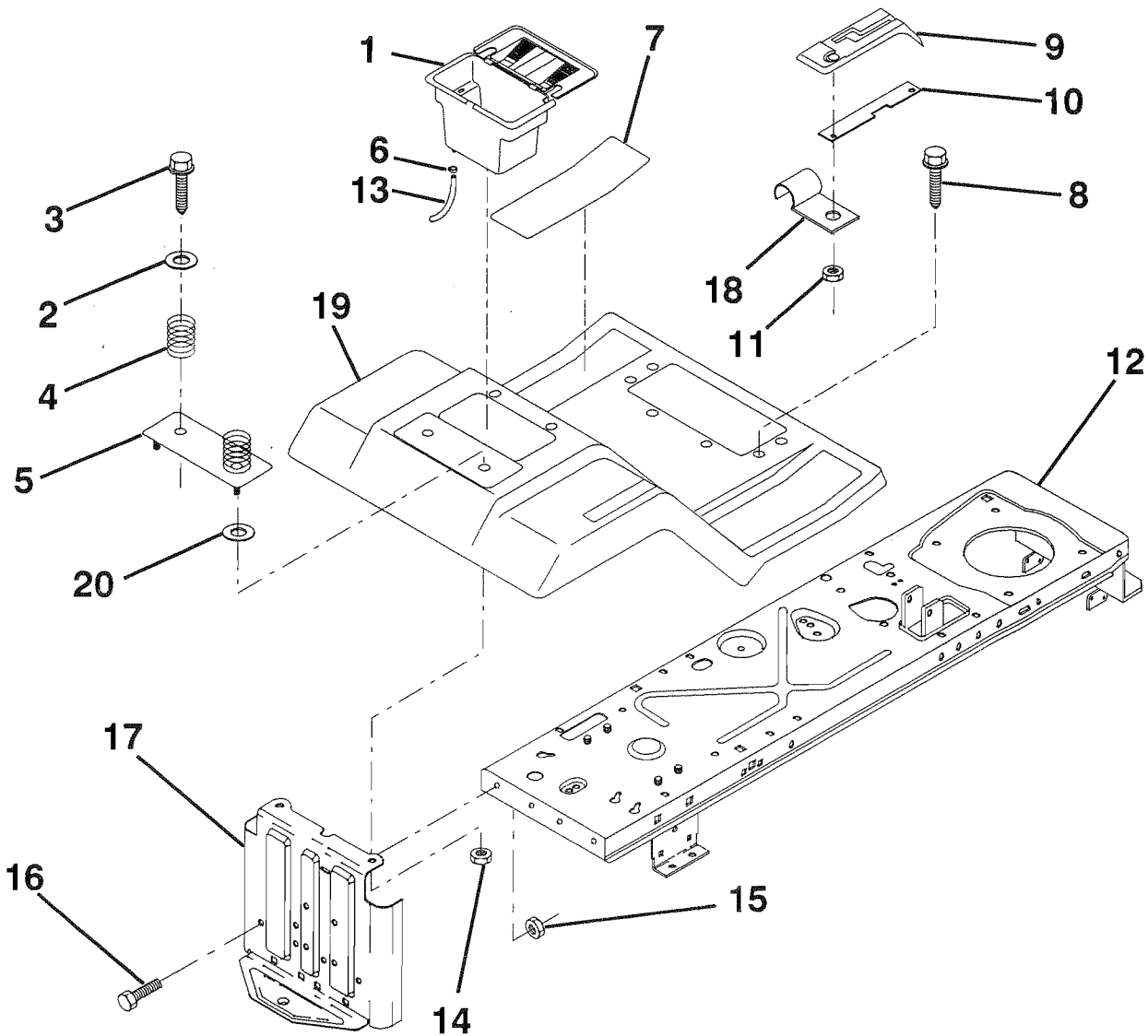
ELECTRICAL

KEY NO.	PART NO.	DESCRIPTION	KEY NO.	PART NO.	DESCRIPTION
1	873510400	Nut, Hex Keps 1/4-20	18	532128353	Assembly, Cable
2	532108423	Assembly, Cable	19	532132223	Harness, Ignition
3	532133909	Battery	20	873350400	Nut, Hex Jam 1/4-20
4	817211008	Screw, Hex Wsh. Tap #10-16 x 1/2	21	810090400	Washer, Lock 1/4
5	532108236	Bracket, Switch	22	874780408	Bolt, Fin. Hex 1/4-20 UNC x 1/2 Gr. 5
6	532104445	Switch, Interlock	23	811050400	Washer, Lock Ext. Tooth 1/4
7	532109553	Switch, Interlock	24	532131563	Cover, Terminal
8	817021008	Screw, Hex Hd. Tap #10-24 x 1/2	25	532109081	Solenoid
9	532122147	Key, Molded	26	874760412	Bolt, Hex Hd. 1/4-20 UNC x 3/4
10	532123620	Cover, Key Ignition	27	819091016	Washer 9/32 x 5/8 x 16
11	532124211	Nut, Ignition	28	810040400	Washer, Lock 1/4
12	532125104	Switch, Ignition	29	532121264	Cap, Battery
13	532124083	Cover, Ignition Switch	30	873220400	Nut, Fin. Hex 1/4-20 UNC
14	532124756	Tie, Cable			
15	532121305	Switch, Plunger			
16	873510500	Nut, Hex, Keps 5/16-18			
17	532108824	Fuse			

HARDWARE SHOWN LARGER FOR EASIER IDENTIFICATION

ILLUSTRATED PARTS BREAKDOWN

FENDER / CHASSIS

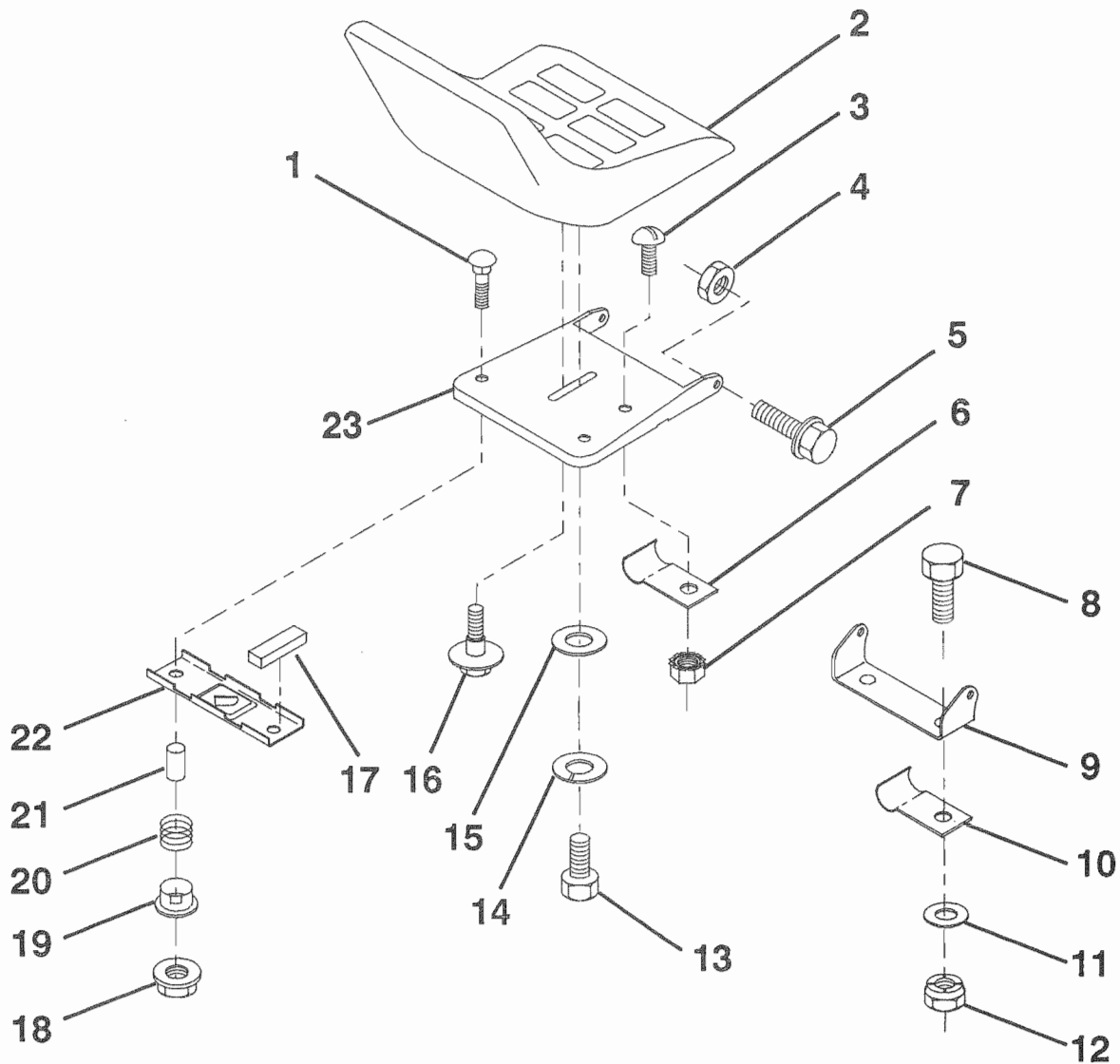


KEY NO.	PART NO.	DESCRIPTION	KEY NO.	PART NO.	DESCRIPTION
1	532129965	Case, Battery	11	532124346	Nut, Self-Threading, Washer Head 3/16
2	819132012	Washer 13/32 x 1-1/4 x 12 Ga.	12	532123645	Assembly, Frame
3	817490612	Screw, Hex 3/8-16 Thrdrol.	13	532105687	Tube, Battery Drain
4	532124181	Spring, Compression, Seat	14	873510400	Nut, Keps Hex 1/4-20 UNC
5	532125387	Plate, Asm. Battery	15	873680500	Nut, Crownlock 5/16-18
6	532109596	Clamp, Hose	16	874760512	Bolt, Hex Hd. 5/16-18 UNC x 3/4
7	532124144	Pad, Footrest	17	532127880	Drawbar
8	817490512	Screw, Hex Wsh. Thrdrol. 5/16-18 x 3/4	18	532126470	Clip, Insulated
9	532126933	Console, Shift Control	19	532125140	Fender/Footrest
10	532124602	Bar, Shift Lock	20	819091413	Washer 9/32 x 7/8 x 13 Ga.

HARDWARE SHOWN LARGER FOR EASIER IDENTIFICATION

ILLUSTRATED PARTS BREAKDOWN

SEAT



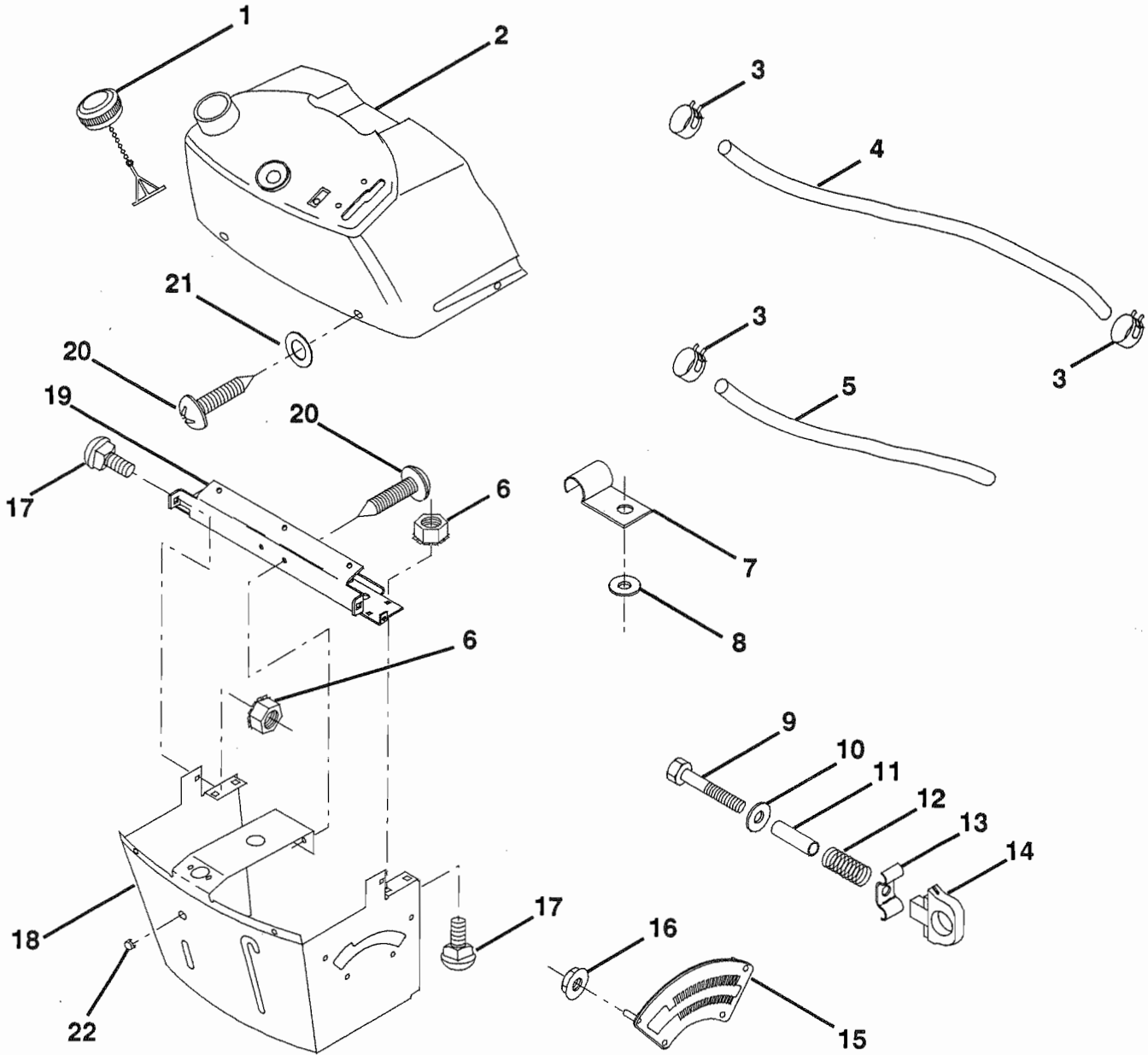
KEY NO.	PART NO.	DESCRIPTION
1	872170411	Bolt, Carriage 1/4-20 x 1-3/8
2	532127422	Seat
3	874641008	Screw, Slotted Pan Head #10-32 x 1/2
4	873680500	Nut, Crownlock 5/16-18
5	532105529	Bolt, Shoulder 5/16-18 UNC
6	532124967	Clip, Insulated
7	873951000	Nut, Keps #10-32 UNF
8	874760612	Bolt, Fin Hex 3/8-16 UNC x 3/4
9	532126656	Bracket, Pivot Seat
10	532126471	Clip, Insulated
11	819131210	Washer 12/32 x 3/4 x 10 Ga.
12	873680600	Nut, Crownlock 3/8-16 UNC

KEY NO.	PART NO.	DESCRIPTION
13	874780814	Bolt, Fin Hex 1/2-13 UNC x 7/8 Gr. 5
14	810040800	Washer, Lock Hvy Helical Spring
15	819171912	Washer, 17/32 x 1-3/16 x 12 Ga.
16	532127018	Bolt, Shoulder
17	532121251	Strip, Foam
18	532123976	Nut, Hex Large Flange Lock
19	532121248	Bushing, Snap
20	532121250	Spring, Compression
21	532121249	Spacer, Split 28 Id. x .88 Lg.
22	532121246	Bracket, Switch, Mounting
23	532131451	Pan, Seat

HARDWARE SHOWN LARGER FOR EASIER IDENTIFICATION

ILLUSTRATED PARTS BREAKDOWN

DASH



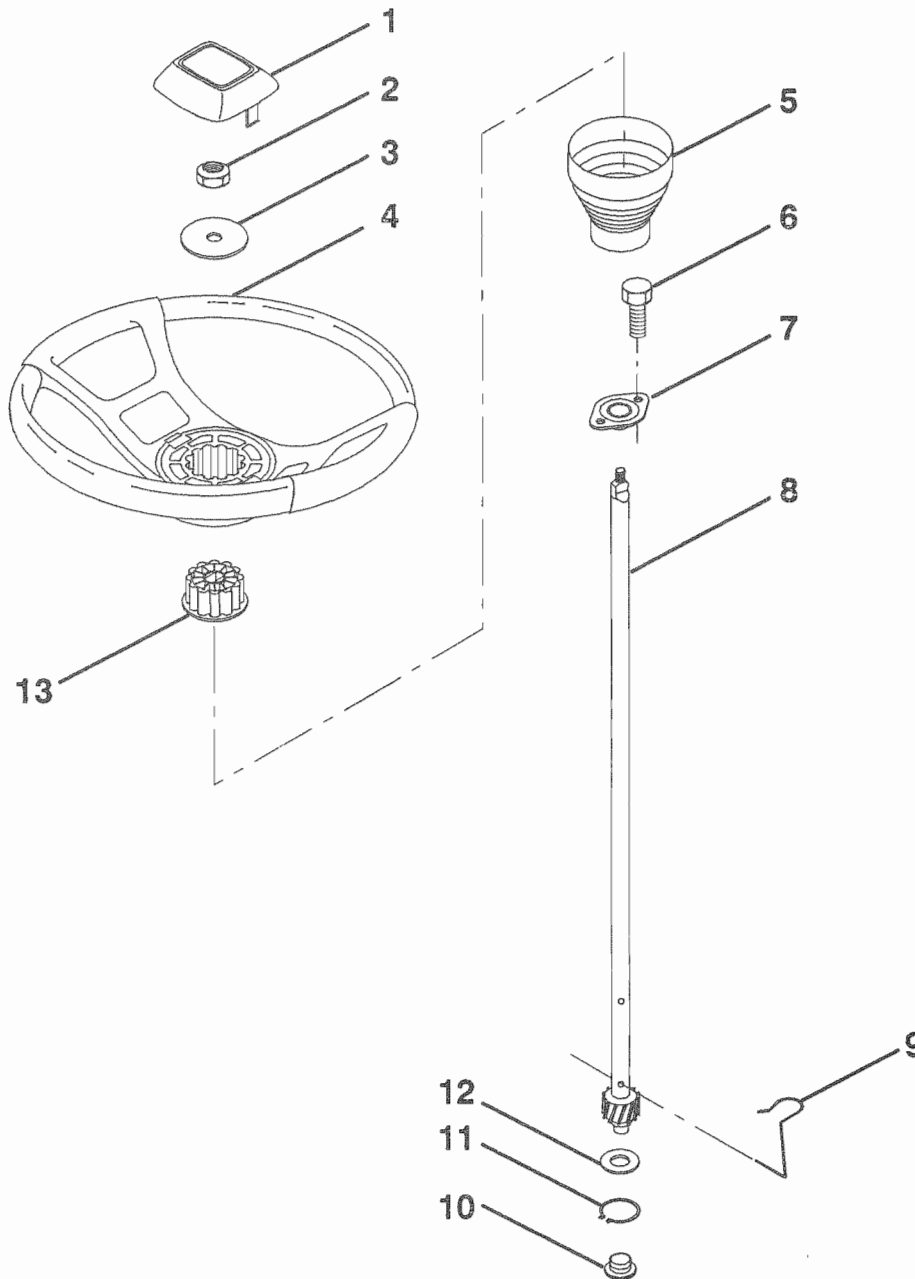
KEY NO.	PART NO.	DESCRIPTION
1	532122015	Cap, Fuel
2	532130913	Assembly, Dash & Fuel Tank
3	532123487	Clamp, Hose
4	532008544	Line, Fuel
5	532008548	Line, Fuel
6	873510400	Nut, Hex, Keps 1/4-20
7	532124996	Clip, Fuel Line
8	819091216	Washer 9/32 x 3/4 x 16 Ga.
9	874760428	Bolt, Hex, Fin 1/4-20 x 1-3/4
10	819091413	Washer 11/32 x 11/16 x 16 Ga.
11	532121249	Spacer, Split

KEY NO.	PART NO.	DESCRIPTION
12	532003720	Spring
13	532126450	Clip, Height Adjustment
14	532126115	Knob, Height Stop
15	532122023	Adjustment, Quadrant Height
16	532124346	Nut, Self-Threading 3/16-18
17	872110404	Bolt, Carriage 1/4-20 x 1/2 Gr. 5
18	532130745	Support Assembly, Dash
19	532134744	Brace, Cross
20	818000408	Screw, Self-Tapping 1/4-20 x 1/2
21	819090816	Washer 9/32 x 1/2 x 16 Ga.
22	532134014	Plug Dome

HARDWARE SHOWN LARGER FOR EASIER IDENTIFICATION

ILLUSTRATED PARTS BREAKDOWN

STEERING WHEEL

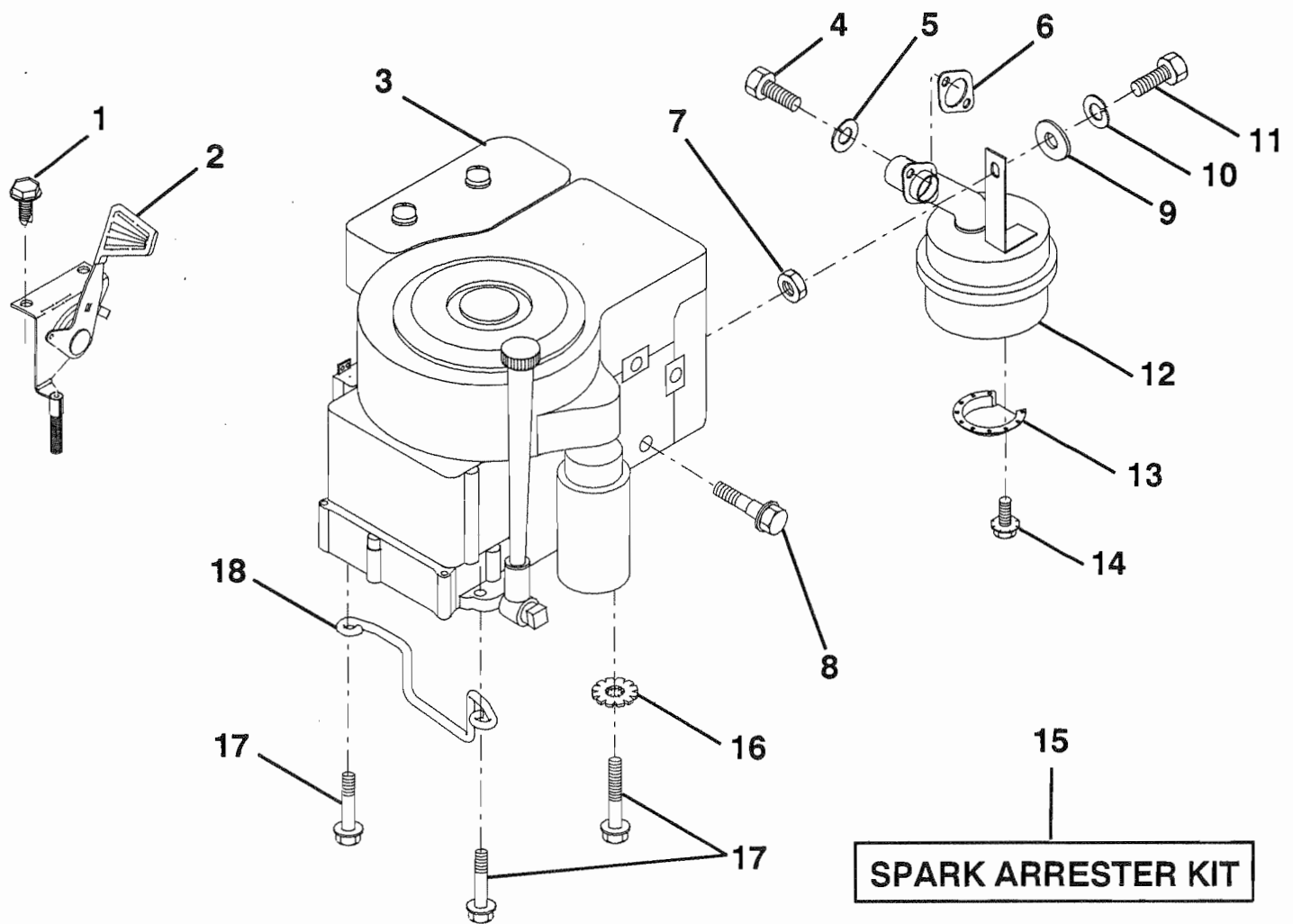


KEY NO.	PART NO.	DESCRIPTION	KEY NO.	PART NO.	DESCRIPTION
1	532100710	Insert, Wheel, Steering	8	532123651	Shaft, Steering
2	532124701	Locknut 3/8-24 UNF	9	532124210	Clip, Steering
3	819133808	Washer 12/32 x 2-3/8 x 8 Ga.	10	532123438	Bushing, Lower, Steering
4	532100713	Wheel, Steering	11	812000045	Ring, Retaining
5	532121897	Sleeve, Steering	12	819211616	Washer 21/32 x 1 x 16 Ga.
6	817431008	Screw, Hex #10-16 x 1/2 TY-B	13	532104820	Adaptor, Wheel, Steering
7	532102803	Bushing, Steering			

HARDWARE SHOWN LARGER FOR EASIER IDENTIFICATION

ILLUSTRATED PARTS BREAKDOWN

ENGINE / THROTTLE

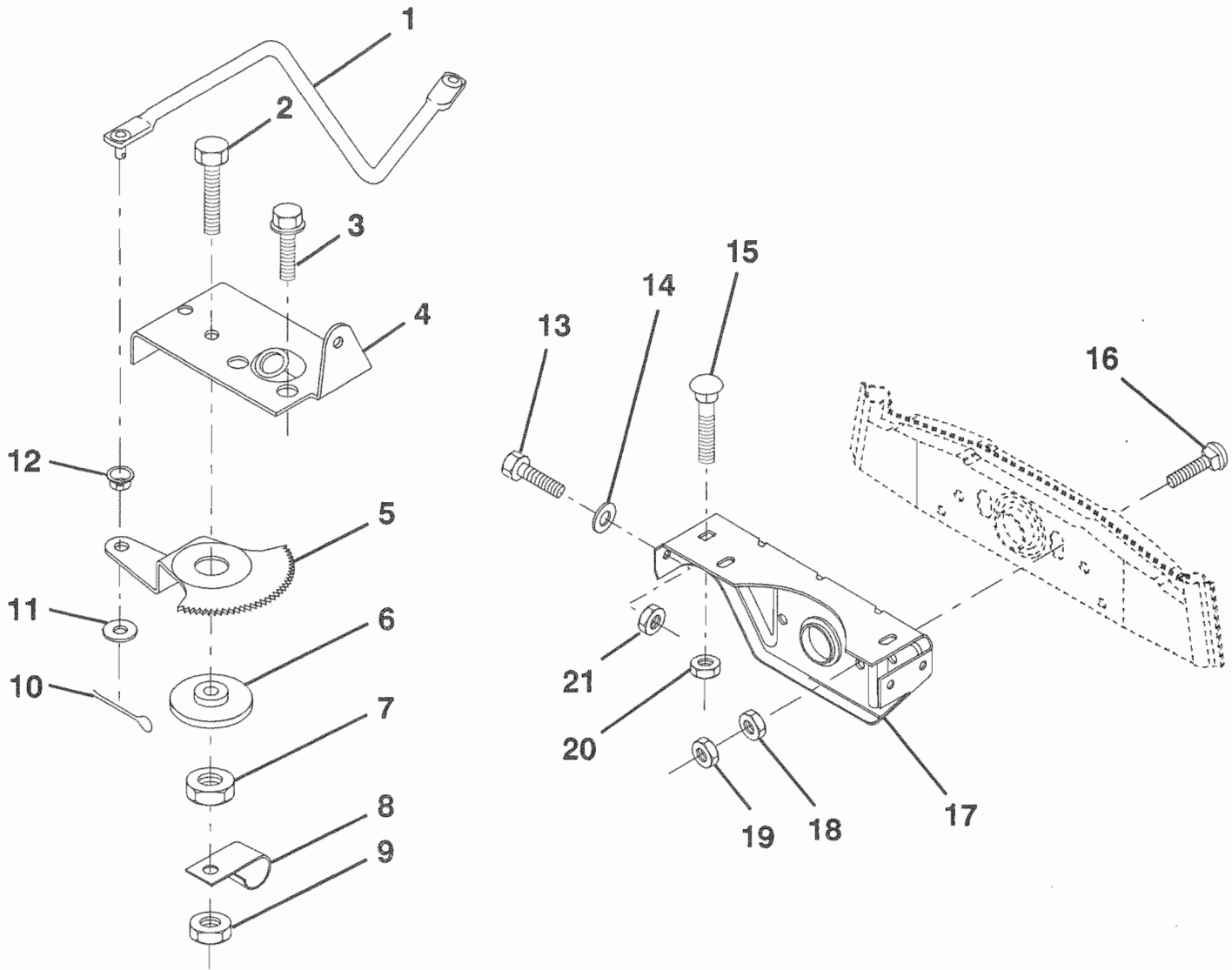


KEY NO.	PART NO.	DESCRIPTION	KEY NO.	PART NO.	DESCRIPTION
1	817720408	Screw, Hex Thd. Cut 1/4-20 x 1/2	11	874780416	Bolt, Hex Fin. 1/4-20 UNC x 1
2	532132521	Control, Throttle	12	532124097	Muffler
3	532131996	Engine, Briggs and Stratton Model No. 258707	13	532101326	Deflector, Muffler
4	871070512	Screw, Hex, Cap 5/16-18 x 3/4	14	817030808	Screw, Spiderlock Hex Hd. 8 x 1/2 ABTPS
5	810040500	Washer, Lock Heavy Helical Spring 5/16	15	532121851	Arrester, Spark (Optional equipment)
6	532125593	Gasket, Exhaust	16	811050600	Lock, Washer Ext. Tooth 3/8
7	873220500	Nut Fin Hex 5/16-18	17	817490624	Screw, Hex Washer Head, Thdrol. 3/8-16 x 1-1/2
8	532121094	Bolt, Shoulder 5/16 UNC	18	532126636	Keeper, Ground Drive Belt
9	819101216	Washer 5/16 x 3/4 x 16			
10	810040400	Washer, Lock Heavy Helical Spring 1/4			

HARDWARE SHOWN LARGER FOR EASIER IDENTIFICATION

ILLUSTRATED PARTS BREAKDOWN

SECTOR GEAR / AXLE SUPPORT



KEY NO.	PART NO.	DESCRIPTION
---------	----------	-------------

1	532132566	Link, Drag
2	874780828	Bolt, Fin Hex 1/2-13 x 1-3/4
3	817490508	Screw, Hex Thrdrol 5/16-18 x 1/2
4	532121925	Plate, Steering Support
5	532121926	Gear, Sector
6	532121927	Bushing
7	873030800	Nut, Heavy Hex Top Lock 1/2-13 UNC
8	532126472	Clip, Insulated
9	873680800	Nut, Crownlock 1/2-13
10	876020412	Pin, Cotter 1/8 x 3/4

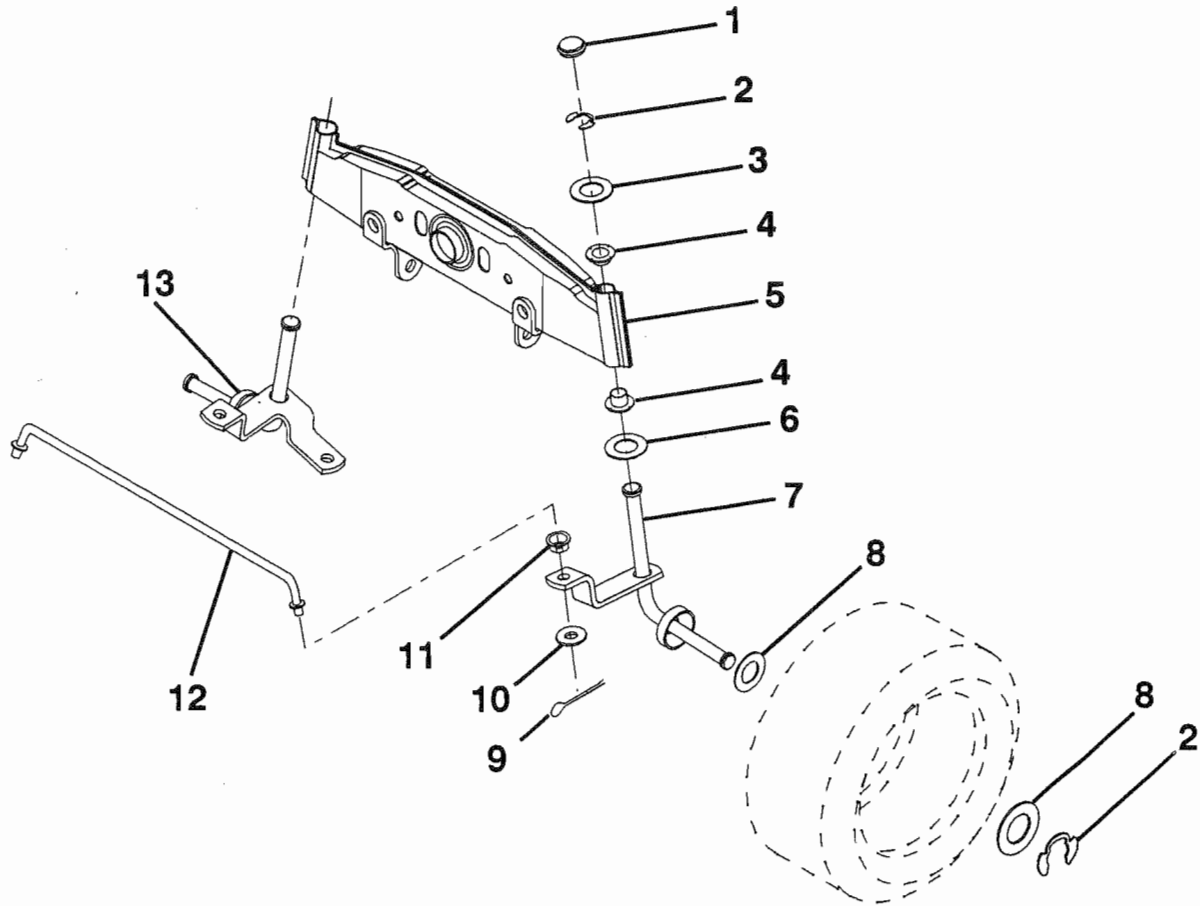
KEY NO.	PART NO.	DESCRIPTION
---------	----------	-------------

11	819131316	Washer, 13/32 x 13/16 x 16 Ga.
12	532126847	Bushing
13	874760512	Bolt, Hex Hd. 5/16-18 UNC x 3/4
14	819111416	Washer 11/32 x 7/8 x 16 Ga.
15	872110606	Bolt, Carriage 3/8-16 UNC x 3/4
16	872140622	Bolt, Carriage
17	532121912	Support, Front Axle
18	873220600	Nut, Fin Hex 3/8-16 UNC
19	873930600	Nut, Centerlock 3/8-16 UNC
20	873680600	Nut, Crownlock 3/8-16 UNC
21	873680500	Nut, Crownlock 5/16-18

HARDWARE SHOWN LARGER FOR EASIER IDENTIFICATION

ILLUSTRATED PARTS BREAKDOWN

FRONT AXLE

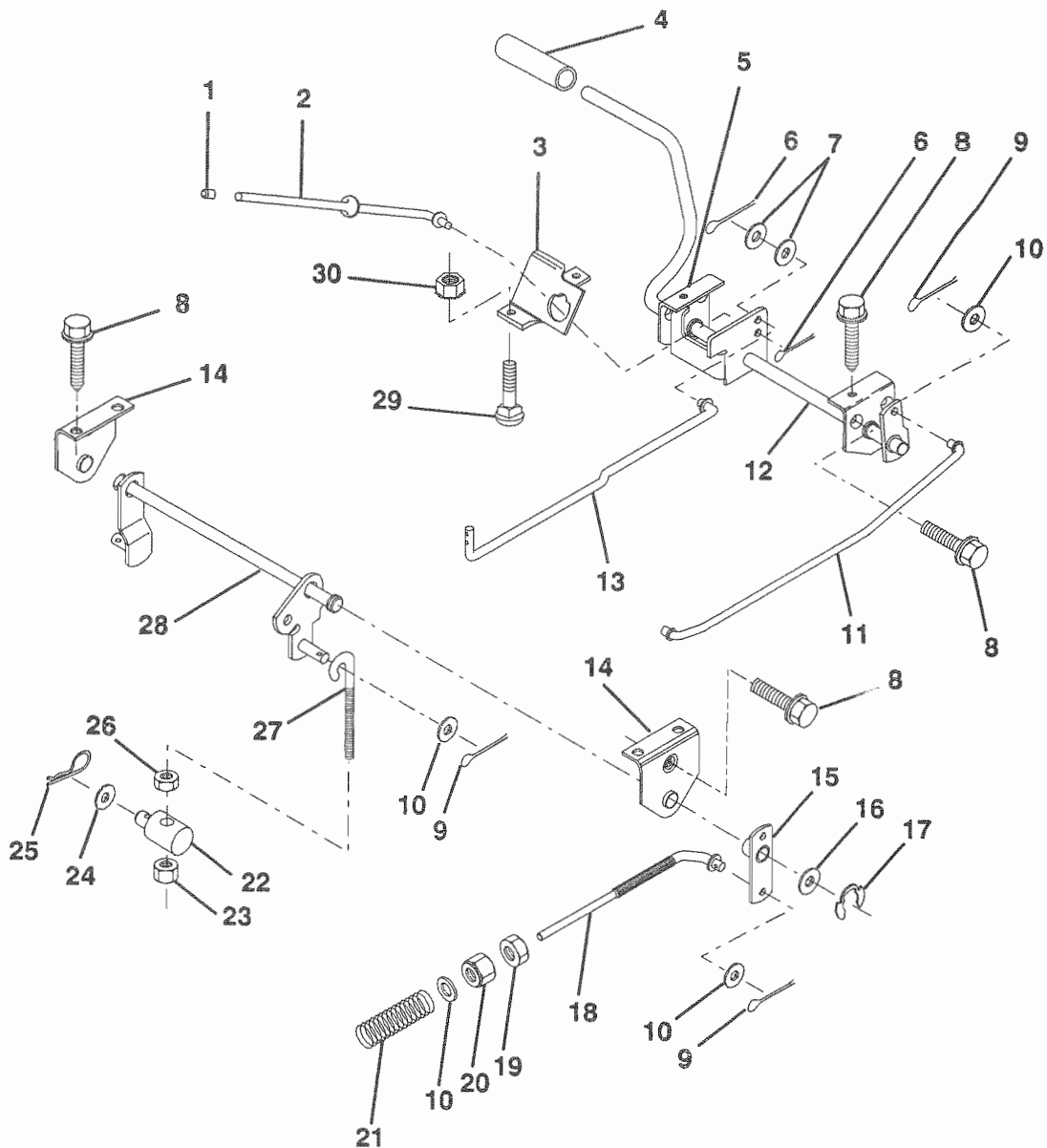


KEY NO.	PART NO.	DESCRIPTION	KEY NO.	PART NO.	DESCRIPTION
1	532121232	Cap, Spindle	8	532121749	Washer 25/32 x 1-1/4 x 16 Ga.
2	812000029	Ring, Clip	9	876020412	Pin, Cotter 1/8 x 3/4
3	532121748	Washer 25/32 x 1-5/8 x 16 Ga.	10	819131316	Washer 13/32 x 13/16 x 16 Ga.
4	532121922	Nyliner	11	532126847	Bushing
5	532128543	Axle, Front	12	532121924	Rod, Tie
6	532124931	Bearing, Thrust	13	532121916	Spindle, L.H. Asm.
7	532121919	Spindle, R.H. Asm.			

HARDWARE SHOWN LARGER FOR EASIER IDENTIFICATION

ILLUSTRATED PARTS BREAKDOWN

BRAKE / REAR MOWER LIFT ASSEMBLY

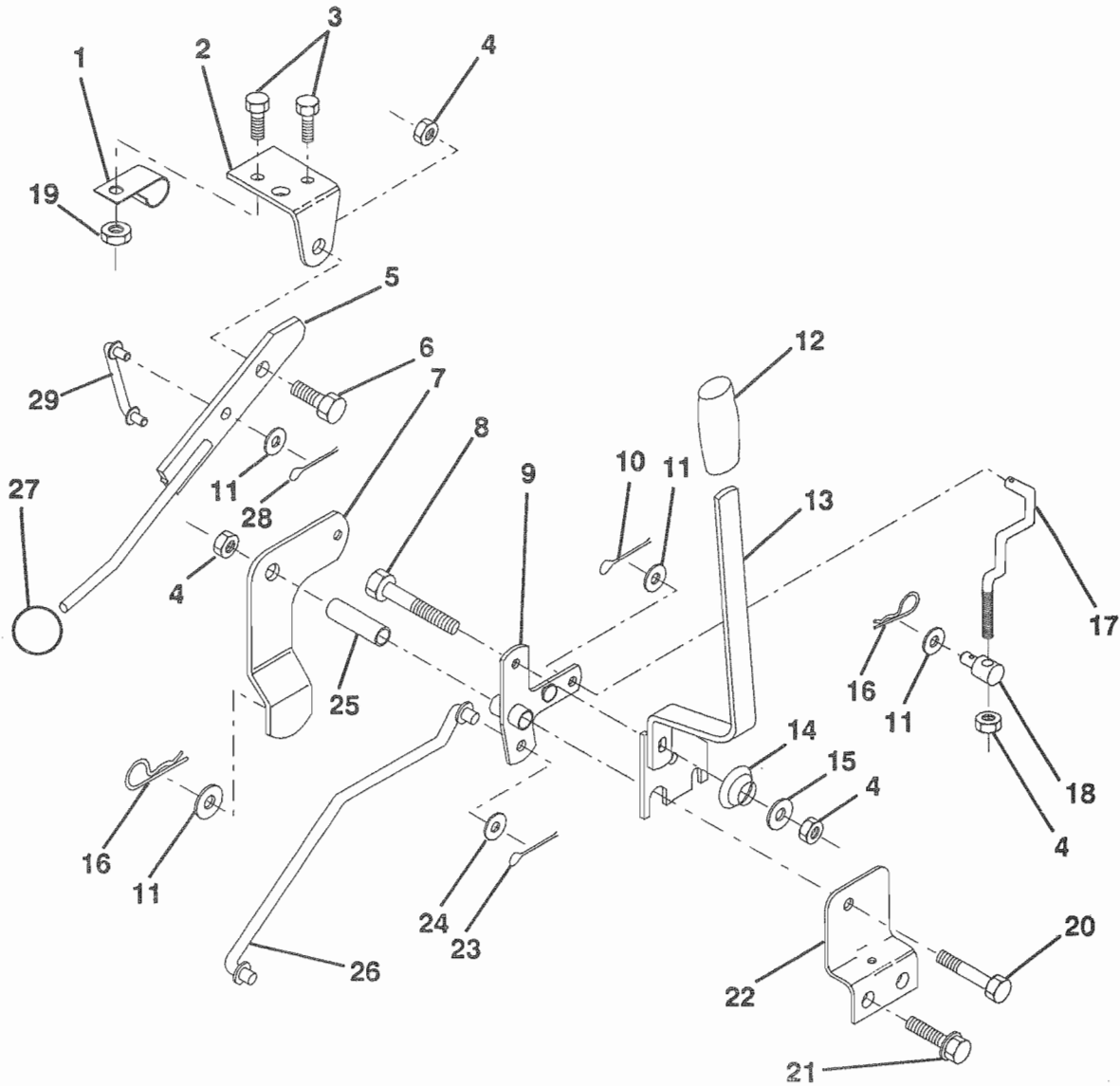


KEY NO.	PART NO.	DESCRIPTION	KEY NO.	PART NO.	DESCRIPTION
1	532071673	Cap, Plunger	16	819251816	Washer 25/32 x 1-1/8 x 16 Ga.
2	532123436	Rod, Parking Brake	17	812000034	Ring, Klip
3	532123437	Bracket, Parking Brake	18	532131460	Rod, Rear Brake
4	532124872	Cover, Pedal	19	873350600	Nut, Hex, Jam 3/8-16 UNC
5	532122504	Bracket, Clutch/Brake Pedal, L.H.	20	873800600	Locknut, Hex w/Washer Insert 3/8-16 UNC
6	876020312	Pin, Cotter 3/32 x 3/4	21	532106888	Spring, Brake Rod
7	819131016	Washer 13/32 x 5/8 x 16 Ga.	22	532127378	Trunnion, Lift
8	817490508	Screw, Hex, Thd. Roll. 5/16-18 x 1/2	23	873680600	Nut, Crownlock 3/8-16 UNC
9	876020412	Pin, Cotter 1/8 x 3/4	24	819132012	Washer 13/32 x 1-1/4 x 12 Ga.
10	819131316	Washer 13/32 x 13/16 x 16 Ga.	25	532124961	Spring, Retainer
11	532123543	Rod, Brake Front	26	873930600	Nut, Centerlock 3/8-16 UNC
12	532129567	Assembly, Clutch/Brake Pedal	27	532127369	Link, Threaded
13	532123394	Rod, Clutch	28	532127358	Assembly, Rear Mower Lift
14	532121978	Bracket, Lift, Shaft	29	872110506	Bolt, Carriage 5/16-18 UNC x 3/4
15	532123641	Assembly, Brake, Pivot, Arm	30	873510500	Nut, Keps 5/16-16 UNC

HARDWARE SHOWN LARGER FOR EASIER IDENTIFICATION

ILLUSTRATED PARTS BREAKDOWN

MOWER LIFT LEVER



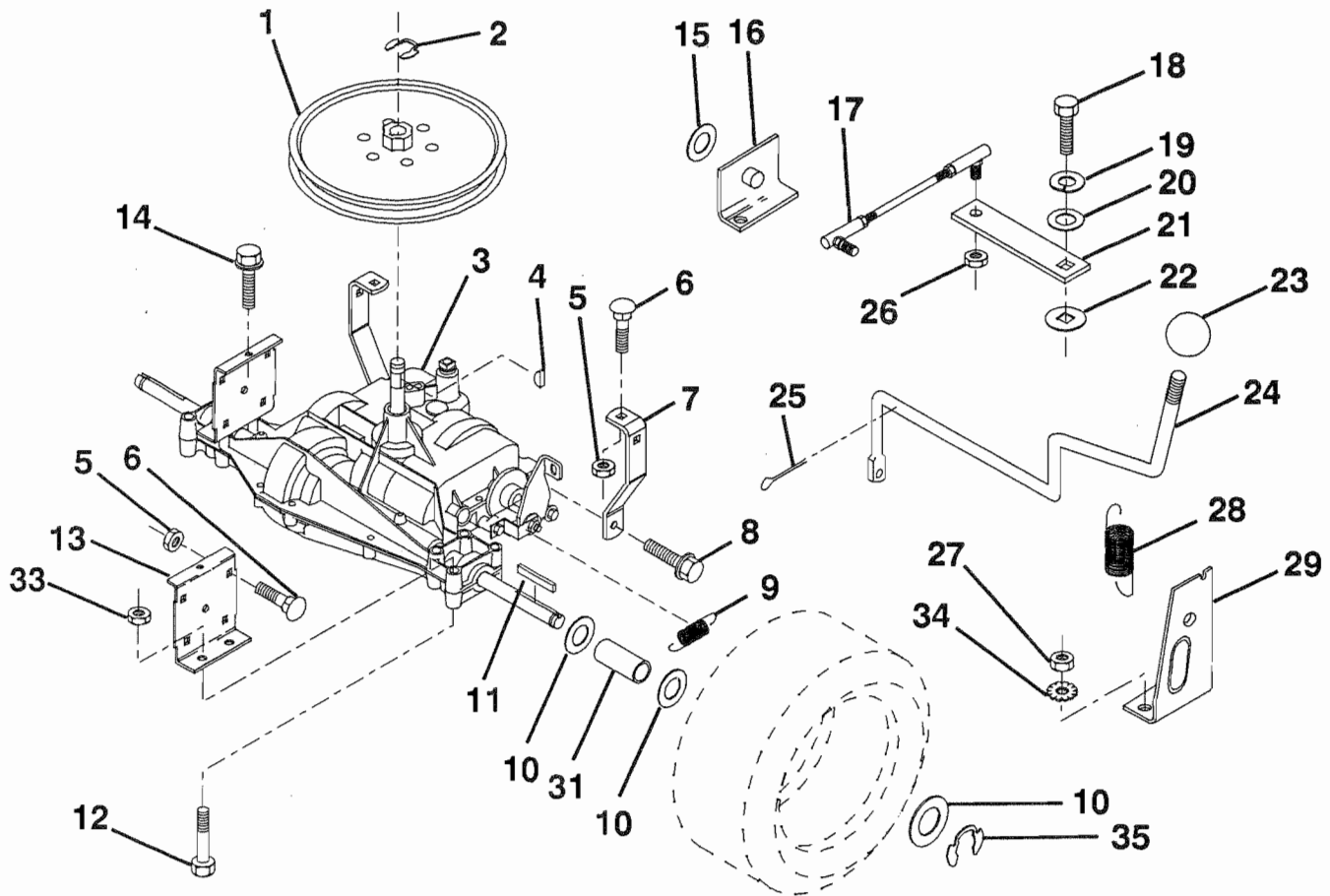
KEY NO.	PART NO.	DESCRIPTION
1	532126470	Clip, Insulated
2	532122018	Bracket, Mower Clutch
3	874780408	Bolt, Fin. Hex 1/4-20 UNC x 1/2 Gr. 5
4	873680600	Nut, Crownlock 3/8-16 UNC
5	532123417	Assembly, Clutch Lever
6	532106451	Bolt, Shoulder
7	532123491	Assembly, Mower Clutch Arm
8	874760636	Bolt, Hex 3/8-16 UNC x 2-1/4
9	532121930	Assembly, Bracket Lift
10	876020412	Pin, Cotter 1/8 x 3/4
11	819131316	Washer 13/32 x 13/16 x 16 Ga.
12	532122027	Grip, Handle
13	532127028	Assembly, Lift Handle
14	532123496	Spring, Compression
15	819131212	Washer 13/32 x 3/4 x 12 Ga.

KEY NO.	PART NO.	DESCRIPTION
16	532124961	Retainer, Spring
17	532127359	Link, Front Lift
18	532133205	Trunnion, Threaded 3/8-16
19	873680400	Nut, Crownlock 1/4-20
20	874760644	Bolt, Fin. Hex 3/8-16 UNC x 2-3/4
21	817490508	Screw, Hex Thdrol. 5/16-18 x 1/2
22	532121929	Bracket, Mower Height
23	876020416	Pin, Cotter 1/8 x 1
24	819171616	Washer 17/32 x 1 x 16 Ga.
25	532121933	Tube, Spacer
26	532121934	Rod, Mower Lift
27	532106932	Knob
28	876020312	Pin, Cotter 3/32 x 3/4
29	532131655	Link, Mower Clutch

HARDWARE SHOWN LARGER FOR EASIER IDENTIFICATION

ILLUSTRATED PARTS BREAKDOWN

TRANSAXLE

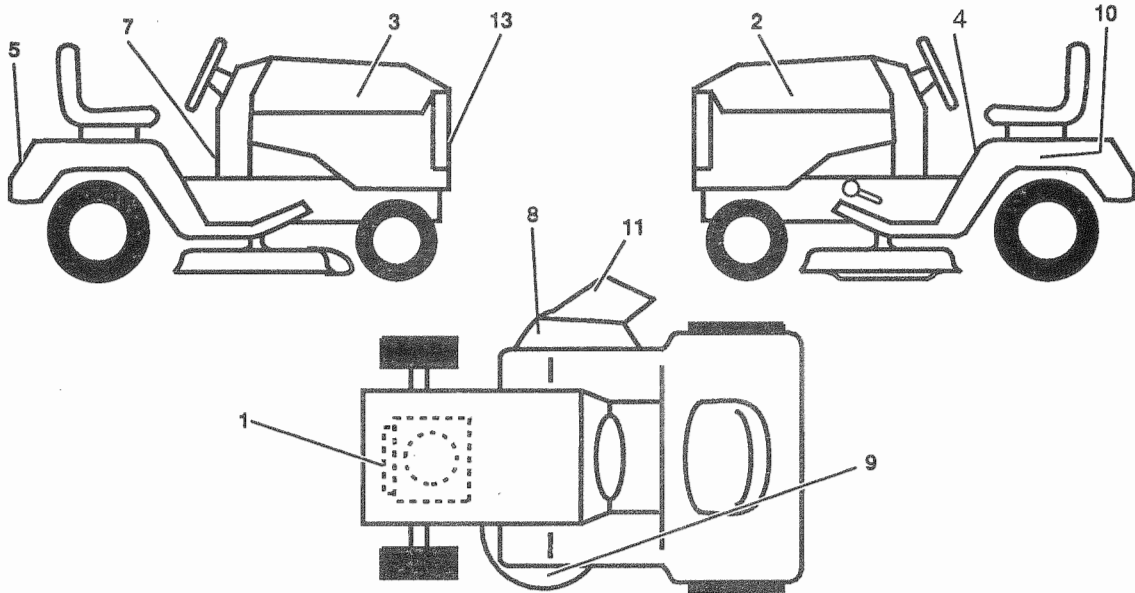


KEY NO.	PART NO.	DESCRIPTION	KEY NO.	PART NO.	DESCRIPTION
1	532123385	Pulley	16	532124600	Support, Handle Shift, L.H.
2	812000028	Ring, Retainer	17	532123632	Link, Shift
3	532123383	Transaxle, Dana 4 Spd. Model No. 4360-15	18	871040412	Bolt, Fin Hex 1/4-28 UNF x 3/4 Gr. 8
4	532125096	Key, Woodruff #9	19	810040400	Washer, Lock 1/4
5	873680500	Nut, Crownlock 5/16-18	20	819091210	Washer 9/32 x 3/4 x 10 Ga.
6	872140506	Bolt, Carriage 5/16-18 UNC x 3/4	21	532123484	Arm, Shift
7	532123378	Strap, Torque	22	532105701	Washer, Shift Plate
8	817490508	Screw, Hex Thdrol 5/16-18 x 1/2	23	532106933	Knob
9	532110422	Spring, Brake	24	532128215	Handle, Asm. Shift
10	532121749	Washer 25/32 x 1-1/4 x 16 Ga.	25	876020416	Pin, Cotter 1/8 x 1
11	532123583	Key, Square	26	873810500	Nut, Hex Nylon
12	874760644	Bolt, Fin Hex 3/8-16 x 2-3/4	27	873510500	Nut, Keps 5/16-18
13	532123377	Bracket, Transaxle	28	532128085	Extension, Spring
14	817490512	Screw 5/16-18 x 3/4	29	532128084	Support Handle Shift RH
15	819171616	Washer 17/32 x 1 x 16 Ga.	31	532123409	Spacer Split
			33	873680600	Nut, Crownlock 3/8-16
			34	811050500	Washer External Tooth 5/16
			35	812000001	E-Ring

HARDWARE SHOWN LARGER FOR EASIER IDENTIFICATION

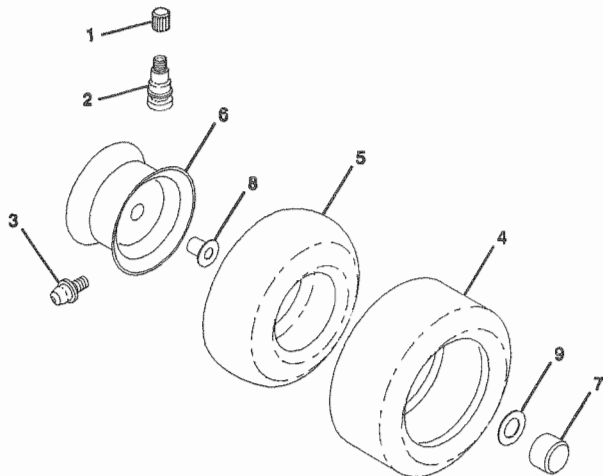
ILLUSTRATED PARTS BREAKDOWN

DECALS



KEY NO.	PART NO.	DESCRIPTION
1	532108760	Decal, HP, Engine
2	532134146	Decal, Hood, L. H.
3	532134144	Decal, Hood, R. H.
4	532120822	Decal, Caution
5	532133900	Decal, Logo, Fender
7	532123637	Decal, Oper. Inst. Eng./Fr.
8	532123649	Decal, Warning, Eng./Fr.
9	532109820	Decal, Rotating Blades
10	532121549	Decal, Caution, Battery (Fr./Ger.)
11	532123658	Decal, Warning
13	532127630	Decal, Grill
--	532131819	Manual, Operator's
--	532134610	Manual, Parts

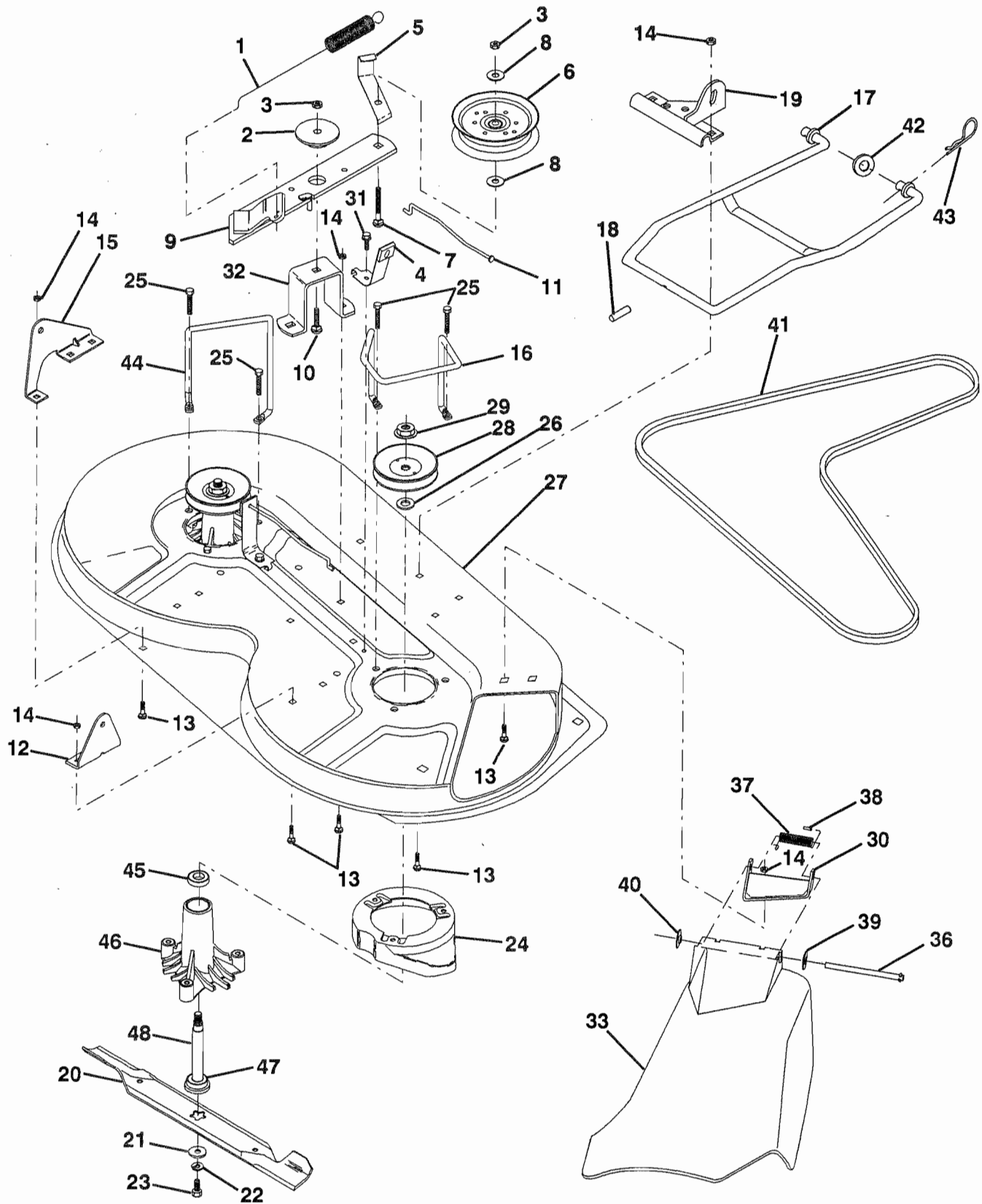
WHEELS & TIRES



KEY NO.	PART NO.	DESCRIPTION
1	532059192	Cap, Valve
2	532065139	Stem, Valve
3	532124957	Fitting, Greas (Front Wheels Only)
4	532124142	Tire, Front
4	532124143	Tire, Rear
5	532059904	Tube, Front (Optional Service Items Only)
5	532008134	Tube, Rear (Optional Service Items Only)
6	532125095	Rim, Front
6	532125097	Rim, Rear
7	532104757	Cap, Axle
8	532124959	Bearing, Flange
9	532121748	Washer 25/32 x 1-5/8 x 16 Ga.

ILLUSTRATED PARTS BREAKDOWN

MOWER DECK



ILLUSTRATED PARTS BREAKDOWN

MOWER DECK

KEY NO.	PART NO.	DESCRIPTION	KEY NO.	PART NO.	DESCRIPTION
1	532127743	Spring, Mower Clutch	25	532078158	Bolt 5/16-18 x 1-1/4
2	532122052	Spacer, Retainer	26	532129963	Washer .150 Thk.
3	873680600	Nut, Crownlock	27	532129983	Deck Assembly
4	532130840	Brake Asm.	28	532129207	Pulley, Mandrell
5	532131251	Guide, Belt Idler	29	873050900	Nut, Flangelock 9/16
6	532121316	Pulley, Flat Idler	30	532126361	Bracket, Asm. Deflector
7	872110616	Bolt, Rd Hd Sq. Nk 3/8-16 x 2	31	817490508	Screw, Hex Wsh. Thdrol. 5/16-18 x 1/2
8	819131410	Washer 13/21 x 7/8 x 10 Ga.	32	532122051	Arm, Support Idler Mower
9	532127744	Arm Asm., Idler Mower	33	532131560	Deflector
10	872110608	Bolt, Carriage 3/8-16 x 1	36	532121980	Rod, Hinge
11	532130841	Rod, Brake	37	532123713	Spring, Torsion Deflector
12	532127356	Bracket, Lift R. H. Rear	38	532105304	Cap, Sleeve
13	872140505	Bolt, Carriage 5/16-18 x 5/8	39	819111016	Washer 11/32 x 5/8 x 16 Ga.
14	873680500	Nut, Crownlock 5/16-18	40	532110452	Pushnut
15	532127357	Bracket, Lift L. H. Rear	41	532131264	V-Belt
16	532130837	Keeper, R. H.	42	819171616	Washer 11/32 x 5/8 16 Ga.
17	532128508	Link, Asm. Mower Stabilizer	43	532124660	Retainer, Spring
18	532128511	Pin, Drive	44	532130836	Keeper L. H.
19	532127380	Bracket, Asm. Front	45	532110485	Bearing
20	532127841	Blade	46	532128774	Housing Mandrel Vented
21	532129962	Washer, Hard	47	532129895	Bearing
22	810030600	Washer, Lock 3/8	48	532133172	Shaft, Mandrel
23	532850857	Bolt 3/8-24 x 1-1/4 Gr. 8	--	532130794	Mandrel Asm. (Includes Key No.'s 22-23, 26, 29 and 45-48)
24	532128961	Stripper			

HARDWARE SHOWN LARGER FOR EASIER IDENTIFICATION

PARTS AND SERVICE

Your POULAN PRO product has been expertly engineered and carefully manufactured to rigid quality standards. As with all mechanical products, some adjustments or part replacement may be necessary during the life of your unit.

FOR SERVICE OR REPLACEMENT PARTS:

1. Consult your dealer/place of purchase.
2. Consult the yellow pages of your phone directory for the name of the nearest Poulan/Weed Eater Master Service Dealer (under "saws" for Chain Saws or under "lawn mowers" for Trimmers, Brushcutters, and Blowers).
3. For replacement parts, have available the following information:
 - a. Description of the tool.
 - b. Model Number.
 - c. Description of part.

NOTE: Poulan/Weed Eater Division provides parts and service through its authorized distributors and dealers; therefore, all requests for parts and service should be directed to your local dealer(s). The philosophy of Poulan/Weed Eater Division is to continually improve all of its products. If the operating characteristics or the appearance of your product differs from those described in this Manual, please contact your local Poulan/Weed Eater Dealer for updated information and assistance. Always update your tool when improvements are made available, especially those related to safety. Parts and repair service are not available directly from Poulan/Weed Eater Division White Consolidated Industries, Inc.

POULAN/WEED EATER
DIVISION WHITE CONSOLIDATED INDUSTRIES, INC.
Shreveport, Louisiana 71139-9329

© 1991 Poulan/Weed Eater Division White Consolidated Industries, Inc.