

SAMSUNG

Quick Start Guide

Bluetooth® Mono Headset WEP500

Get connected in 4 quick steps

- 1 Charge your headset
- 2 Put your headset in pairing mode
- 3 Turn on Bluetooth on your phone and pair with headset
- 4 Test and use

Start here →

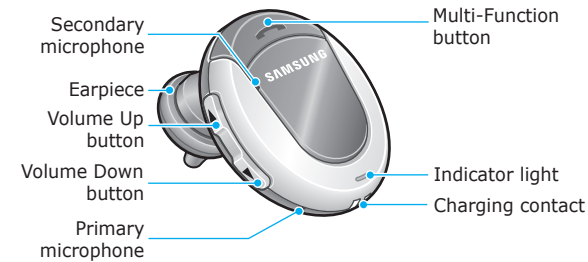
- **Headquarters:**
1301 East Lookout Drive Suite 150
Richardson, TX 75082
- **Internet Address:**
<http://www.samsungmobileusa.com/accessories>
- **Customer Care Center:**
1-888-987-4357



Guide No.: GH68-15049A
07/2007. Rev. 1.1

Before using your headset

Thank you for purchasing the Samsung Bluetooth Mono Headset WEP500. We hope you will be delighted with its operation. Take a moment before you get started to familiarize yourself with your new headset.



Check the accessories

Make sure you have the following items with your headset:

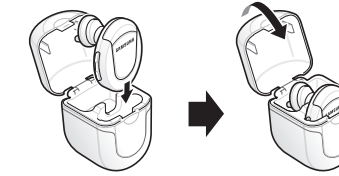
Headset cradle, Adapter, User's Guide,
3 Earpiece Covers (Large, Medium, Small)

- ☑ **NOTE:**
Your headset supports the Headset and/or Hands-Free Profile(s).

Charge your headset

Charge the headset's battery fully before using the headset for the first time.

- 1 Put the headset in the supplied headset cradle and close the cover.



- 2 Plug the adapter into the headset cradle's socket.

- 3 Plug the adapter into the electrical outlet.
 - Charge the headset until the red light on the headset turns to blue.
 - The headset will be fully charged in approximately 2 hours.

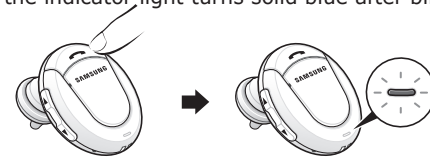
- 4 Remove the adapter from the headset cradle.

- ☑ **NOTE:**
The headset is not able to operate while charging. Try to reconnect after charging is completed.

Put your headset in pairing mode

Before you can use your headset, you must pair it with your phone.

- If you turn on the headset for the first time, it proceeds into pairing mode immediately.
- If you have paired the headset with other Bluetooth devices, make sure that the headset is off (see **Turn headset on/off** on the reverse side of this guide). Then press and hold the Multi-Function button until the indicator light turns solid blue after blinking.



Turn on Bluetooth on your phone and pair with headset

- 1 Set your Bluetooth phone to discover the headset by following your phone's user guide. Typically, the steps involve going to the **Settings**, **Connection**, or **Bluetooth** menu on your phone and then selecting the option to discover Bluetooth devices. Your phone will find the Samsung WEP500 headset.
- 2 Select **Samsung WEP500**.
- 3 When the phone asks if you want to pair with it, confirm by selecting **Yes** or **OK**.
- 4 Enter the headset passkey or PIN, **0000**.

Test and use

Your phone and headset are now paired and ready to make and receive calls. To confirm they are operating properly, make a call:

- 1 Place the headset over your ear. See **Wear the headset** on the reverse side of this guide.
- 2 On your phone, make a call to the number you want.
- 3 If your phone and headset are successfully paired, you will hear ringing on the headset.

After you have successfully paired your phone and headset, you do not need to repeat these initial setup steps each time you use the headset.

Using your WEP500

See **Features and Functions Guide** on the reverse side of this guide for information on using your WEP500.

Features and Functions Guide

SAMSUNG Bluetooth® Mono Headset WEP500

! Important:

Be sure to first follow the Quick Start Guide on the reverse side of this guide to complete initial setup of your headset.

- **Headquarters:**
1301 East Lookout Drive Suite 150
Richardson, TX 75082
- **Internet Address:**
<http://www.samsungmobileusa.com/accessories>
- **Customer Care Center:**
1-888-987-4357



Turn headset on or off

To turn the headset on,

Press and hold the Multi-Function button for 4 seconds until you see 4 blue flashes on the indicator light.

You will hear a tone and see the indicator light flashes while the power is on (see **Meaning of the indicator light** of this guide).

To turn the headset off,

Press and hold the Multi-Function button for 4 seconds until you see blue and red flashes on the indicator light.

You will hear series of 2 tones and see the indicator light stops flashing.

Wear the headset

Wear the headset in your ear.

In general, you will get better performance when there are no obstructions (including parts of your body) between the headset and the phone.

You can replace the original earpiece cover with the supplied earpiece cover. Depending on what ear you are going to wear the headset, simply adjust the cover accordingly.



▲ Left



▲ Right



▲ Left



▲ Right

Adjust the volume

Press [▲] on the side of the headset to increase the volume level and [▼] to decrease the volume level.

Your headset has the Auto volume control feature which changes the volume level you have selected to the most suitable level automatically according to the noise around you.



At very high volumes, prolonged listening to the headset can damage your hearing.

Troubleshooting

My phone does not find my headset.

Make sure the blue indicator light on your headset turns on when your phone is searching for devices.

My headset worked before but now it is not working.

Make sure your phone is on and the Bluetooth feature is turned on in your phone.

If the Bluetooth feature has been turned off or was turned on only temporarily, you may need to restart the Bluetooth feature.

If you have confirmed the Bluetooth feature is on in your phone, pair your phone and headset again.

Make calls

Making a voice activated call

If the phone's voice recognition feature is on, you can make a voice activated call. Press and hold the Multi-Function button. You will hear the voice-activation tone.

Say the name of the person you wish to call. Depending on your phone, this feature may not be supported.

Redialing the last number

Press the Multi-Function button. When you release the button, the phone dials the last dialed or received number. Depending on your phone, how to redial the last number may vary.

Ending a call

Press the Multi-Function button.

Answering a call

When a call comes in, the headset sounds the ring tone and flashes the blue indicator twice. Press the Multi-Function button.

Switching off or on the microphone (Mute)

Press and hold [▲] or [▼] to switch off the headset's microphone. To switch it back on, press and hold either one of the buttons again.

Transferring a call from the phone to the headset

If you answer the call with your phone, you can transfer the call to the headset by pressing the Multi-Function button.

Turning the indicator light on or off

You can deactivate the use of the indicator light in Standby mode and in Active mode. Press and hold [▲] and [▼] at the same time to turn the indicator light on or off.

Use enhanced features

Enhanced features are available for phones that support the Hands-free profile and enhanced features. Depending on your phone, this feature may not be supported.

- **Rejecting a call**
When you receive a call, press and hold the Multi-Function button. Depending on your phone's setting or type, you may only be able to mute the ringer.
- **Place a call on hold**
While you are on a call, press and hold the Multi-Function button. To retrieve the call, press and hold the button again.
- **Answering a second call**
When your phone notifies you of another incoming call while you are on a call, press and hold the Multi-Function button to answer the second call. You can switch between calls by pressing and holding the button. Pressing the Multi-Function button quickly ends the current call and answers the second call.

Meaning of the indicator light

Light	Tone	Status
Flashes in blue every 8 seconds.	Quick series of 2 tones. (Active mode starts.)	<ul style="list-style-type: none"> • The headset is in Active mode. • The headset has an active call in progress. • You can talk up to 3.5 hours.*
Flashes in blue every 3 seconds.	Quick series of 2 tones. (Standby mode starts.)	<ul style="list-style-type: none"> • The headset is in Standby mode. • The headset is waiting for a call. • The headset can be in Standby mode up to 80 hours.*
Flashes in red.	5 tones every 20 seconds.	<ul style="list-style-type: none"> • The battery of the headset is low. • There is less than 10% of battery power left. Recharge the battery.

*Depending on the phone type and usage, the actual time may vary.