

USB MiniCam



LINDY No's 42803 & 42804

www.lindy.com



Thank you for purchasing the LINDY USB MiniCam. This MiniCam is a high-resolution camera with a built-in microphone. A single USB cable connects the camera to your computer for audio and video, so there's no need for a separate untidy microphone cable.

Features

- USB Webcam with high quality 350k Pixel CMOS sensor for smooth, clear images
- Built-in USB microphone
- Allows you to capture still pictures, video and audio
- Ideal for use with NetMeeting or other similar video conferencing software
- Adjustable focus glass lens: 3cm to infinity
- Resolution: up to 640 x 480
- Captures video at up to 30fps
- Snapshot function
- Flexible neck for easy positioning
- IR and white illumination LEDs for use in low light conditions
- Interface: USB 1.1 Full Speed, USB 2.0 compatible
- Software compatibility: Windows 98SE/ME/2000/XP & Mac OS X

Package Contents

- USB MiniCam
- Driver and Manual CD

Product Information



Important! You must install the drivers BEFORE connecting the camera to your PC.

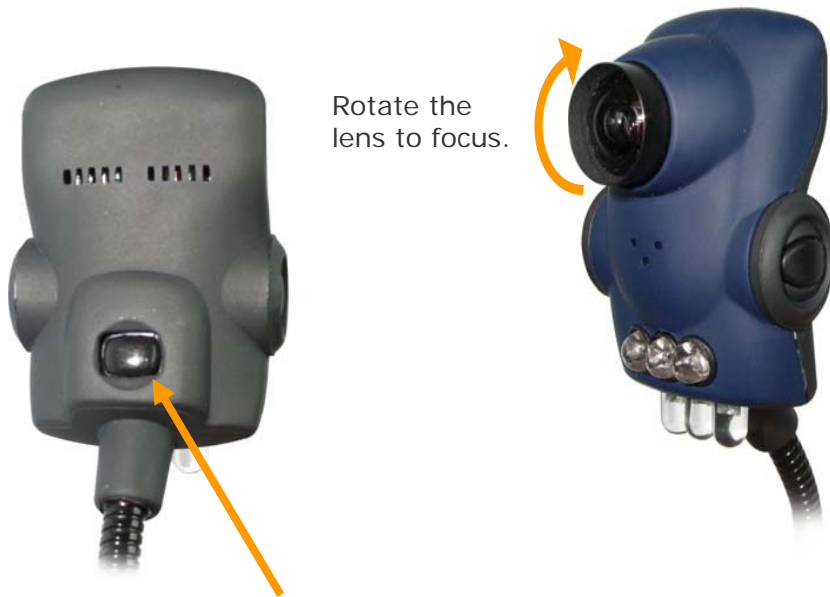
1. Insert the driver CD, the installation application will automatically launch.
2. Click **Install** and follow the on-screen instructions to install the MiniCam driver software.
3. When the installation software has installed, connect the MiniCam to a USB port on your PC.
4. Windows will automatically detect the MiniCam and display a **Found New Hardware Wizard** window. Select the **Install the software automatically (Recommended)** option and click, **Next**.
5. If you see a 'Windows Logo testing' box, click **Continue Anyway**.
6. When the wizard has finished installing the software, click **Finish**. The MiniCam is now ready to be used!

Initial Operation

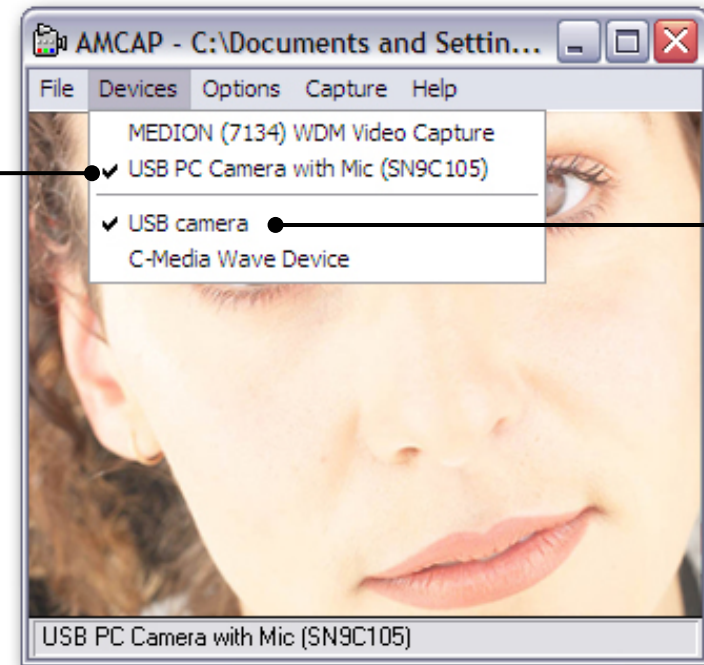
To use the MiniCam, you must launch the **AMCap** application. Select:

Start > All Programs > USB PC Camera Plus > AMCap

The AMCap window will open and display the output from the MiniCam.



Press this button to switch the white LEDs on; press again to switch off.



If you don't see anything in the AMCap window, ensure that 'USB PC Camera with Mic' is selected in the Devices drop down menu.

The lower part of the drop-down menu allows you to select the audio input device. Ensure that 'USB Camera' is ticked.

Setting up the microphone

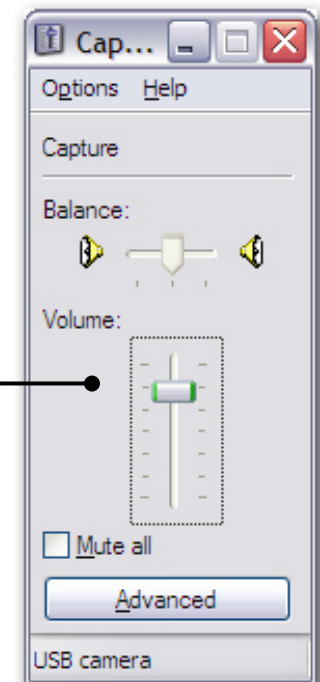
For correct microphone operation you must follow the procedure below.

Open the windows **Sound Recorder** application: **Start > Control Panel > Sounds and Audio Devices**

1. Click on the **Audio** tab; make sure that **USB Camera** is set as the default sound recording device.

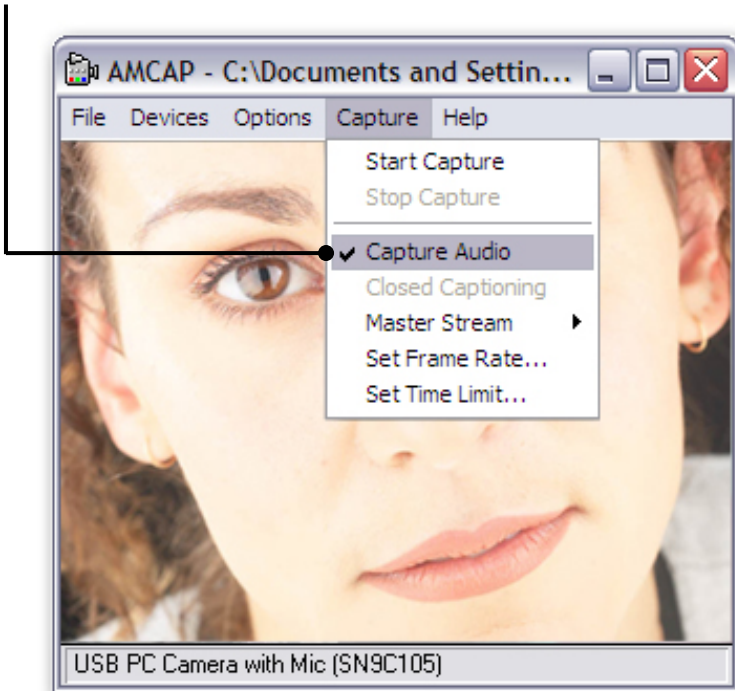


2. Click the **Volume** button. In the window that appears, you can raise the volume control for the MiniCam's built-in microphone. For most purposes a setting of about $\frac{3}{4}$ of the way up will suffice.

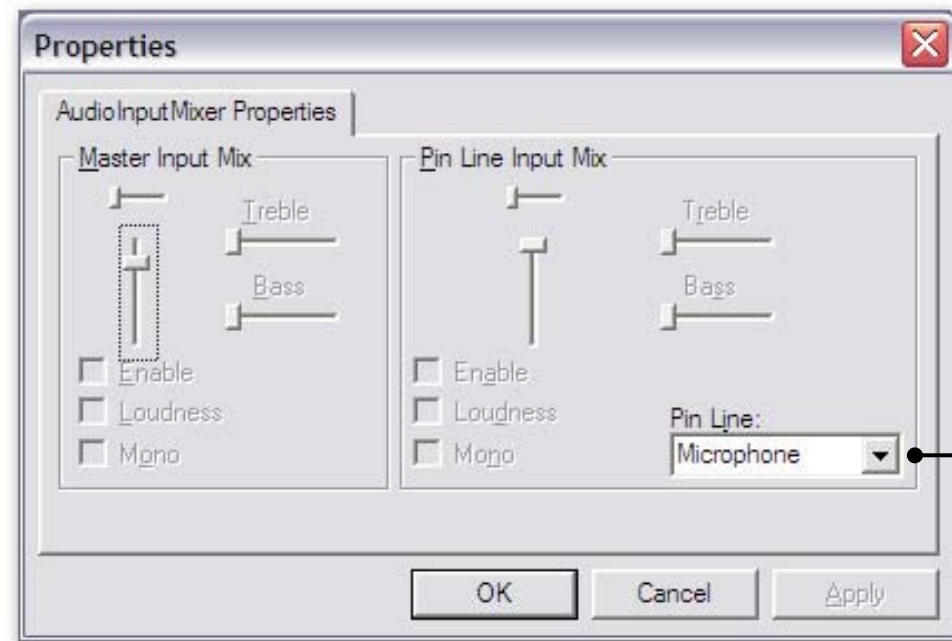


3. Close the volume control window by clicking the 'X' in the top right hand corner, then, in the **Audio Properties** window, click **Apply** and then **OK**, to save the settings.

4. In the AMCap program's **Capture** menu, ensure that **Capture Audio** is ticked.



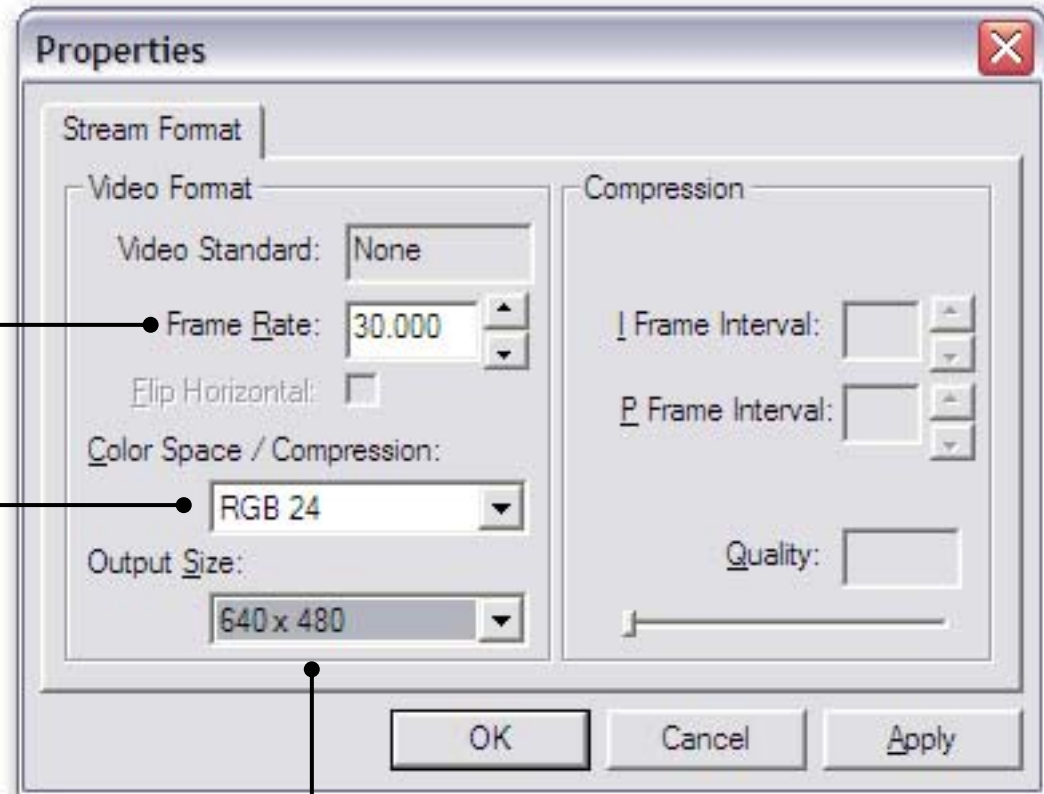
5. Open the **Options > Audio Capture Filter...** menu. In the **Properties** window, check that **Microphone** is selected from the **Pin Line** drop-down list, and then click **OK**.



Video Capture Pin

To change video compression, output size and frame rate settings, select **Video Capture Pin...** from the **Options** menu.

Here you can increase or decrease the video capture frame rate (the higher the frame rate, the smoother the captured video)



Select the Color Space / Compression setting here, you can choose from 'RGB 24' or '1420'. The RGB 24 setting allows a higher display output to be selected, but at a lower maximum frame rate.

Choose the display output size from this drop-down menu

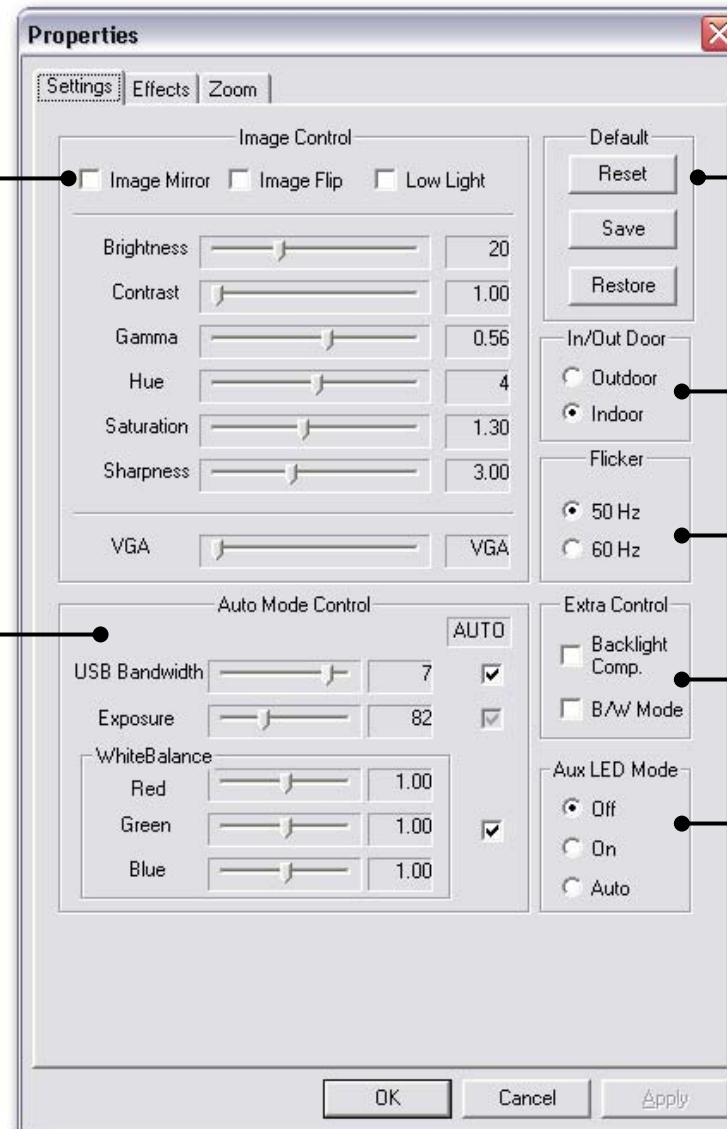
Video Capture Filter

The Video Capture Filter menus allow you to change various settings and apply special effects. To open, select **Video Capture Filter...** from the **Options** menu and click the **Settings** tab.

The Image Control section allows you to make various changes to the image settings; please experiment with the controls to see the effect they make.

Click the 'Reset' button to return to the standard settings

In the Auto Mode Control section you can make changes to the USB bandwidth use, exposure and white balance settings.



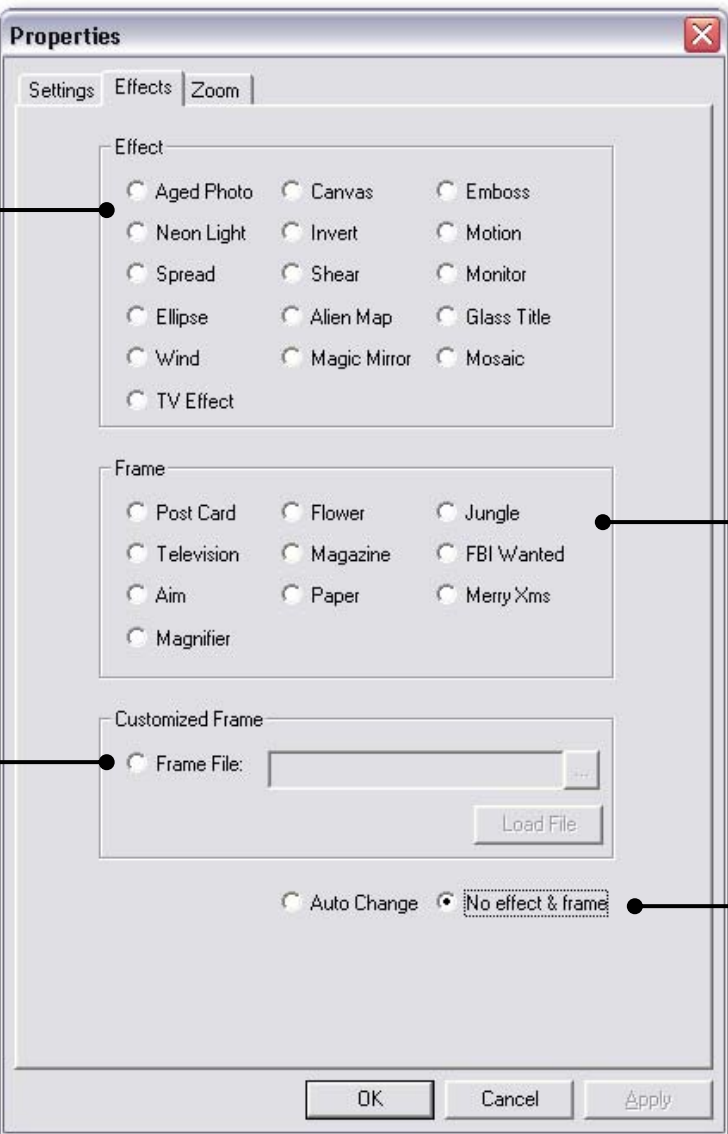
Selecting 'Reset' changes back to the default settings; click 'Save' to store your current settings; clicking 'Restore' reverts to the previously saved settings.

Here you can change the settings for indoor / outdoor operation, refresh rates (flicker) and backlight compensation. You can also choose to output the video in black & white.

The Aux LED Mode section allows you to switch the MiniCam's infra red LEDs on or off. Selecting 'Auto' switches the infra red LEDs on automatically depending on the ambient lighting conditions.

Note: illumination from the infra red LEDs is not visible to the naked eye!

Click the **Effects** tab to view and change the special effects settings.



The screenshot shows the 'Properties' dialog box with the 'Effects' tab selected. The dialog has three tabs: 'Settings', 'Effects', and 'Zoom'. The 'Effects' tab is active and contains three sections: 'Effect', 'Frame', and 'Customized Frame'. The 'Effect' section has 12 radio buttons for different effects: Aged Photo, Canvas, Emboss, Neon Light, Invert, Motion, Spread, Shear, Monitor, Ellipse, Alien Map, Glass Title, Wind, Magic Mirror, Mosaic, and TV Effect. The 'Frame' section has 8 radio buttons for different frames: Post Card, Flower, Jungle, Television, Magazine, FBI Wanted, Aim, Paper, Merry Xms, and Magnifier. The 'Customized Frame' section has a radio button for 'Frame File' followed by a text box and a 'Load File' button. At the bottom, there are two radio buttons: 'Auto Change' and 'No effect & frame'. The 'No effect & frame' button is selected. At the very bottom of the dialog are 'OK', 'Cancel', and 'Apply' buttons.

Select different video effects here.

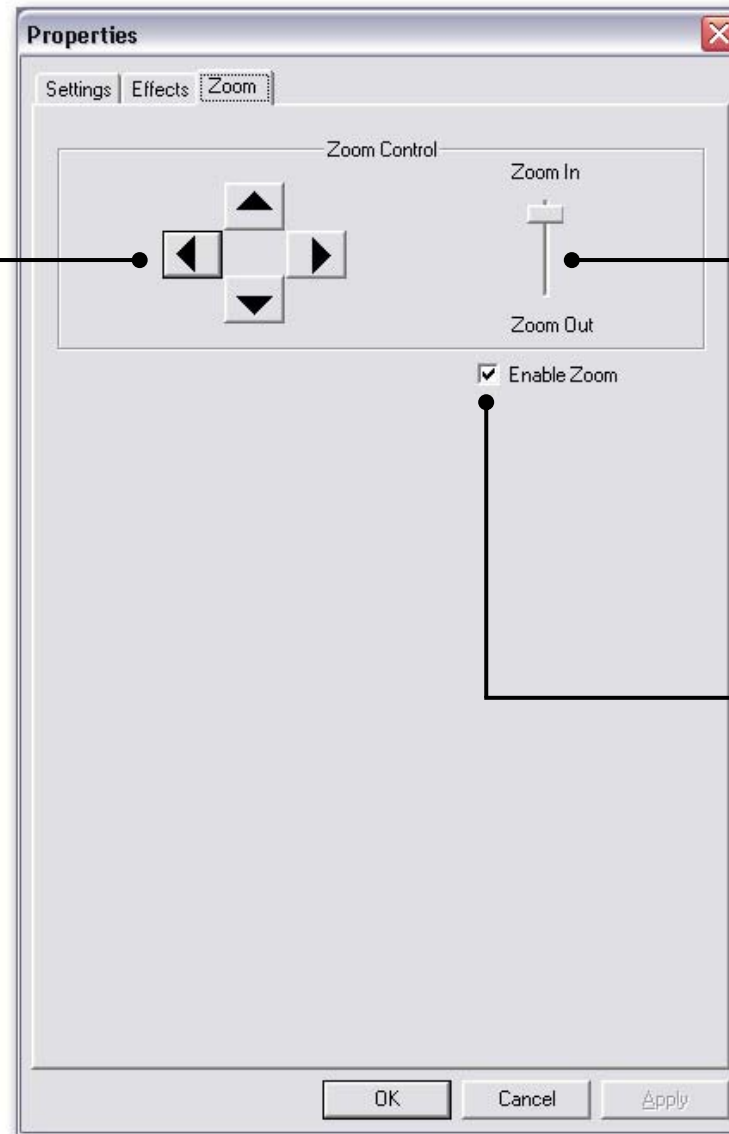
You can choose a frame to apply to your captured video.

You can use your own customised frame. It must be a VGA size 24 Bit bitmap.

Select 'Auto Change' to automatically cycle through the various Effects and Frames.

Click the **Zoom** tab to use the digital zoom and pan controls.

Use the arrows to pan up, down, left and right



Move the slider up to zoom in and down to zoom out

Tick the check box to enable the zoom controls

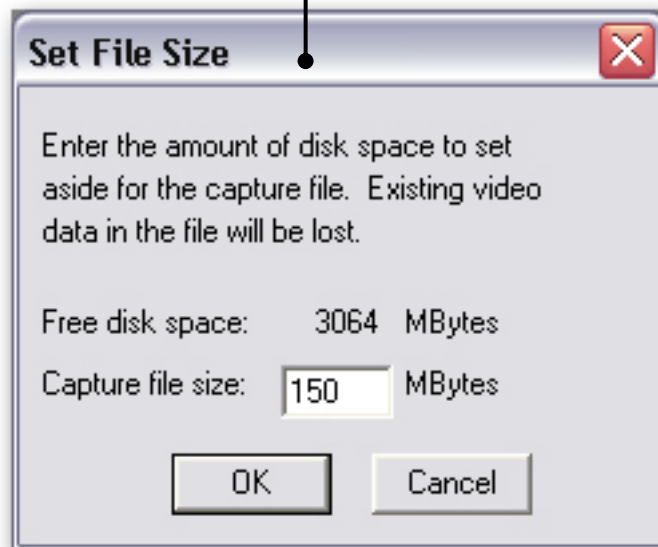
Creating a Capture File

Before capturing video and audio, you should create a capture file.

1. Select **File > Set Capture File...**

Choose a name and location for the capture file. Be sure to add the **.avi** extension to the file name. As an example you could name the file: **Capture.avi**

2. Choose **File > Allocate File Space...** to set aside the amount of disk space for the capture file.



3. Alternatively, instead of using the pre-allocated capture file created in step 1, you can copy the captured data to another file using: **File > Set Capture File...** Be sure to add the **.avi** extension to the file name.

Capturing Video & Audio

1. If you want to capture audio as well as video, ensure that **Capture Audio** is ticked under the **Capture** menu.
2. Select **Capture > Start Capture** and click **OK** or press the **Enter** key.
3. To stop capture, press the **Esc** key or click **Capture > Stop Capture**.
4. The captured file can be accessed from the location you have previously selected. Double-click the file to launch **Windows Media Player** to view the captured video.

Snapshot Function

1. Press the button on the side of the MiniCam to take a photo snapshot.



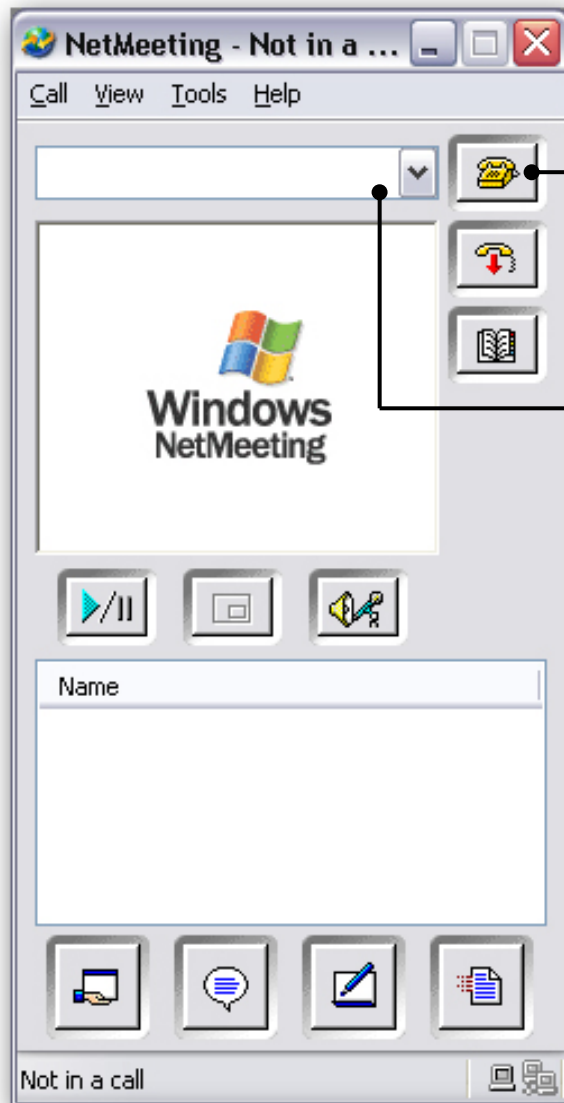
Press this button to take a snapshot

2. A new window will appear showing the photo. Click on the **Rotate** menus to rotate the image in various ways; select **File > Save As...** to save the image.



Using the MiniCam with NetMeeting

Note: For more information about installing and using NetMeeting on your PC, please use Windows Help.



Click to place a call to the computer identified in the IP address field.

Type the IP address of the computer you want to contact in this box.

From the NetMeeting menu bar, select **Tools > Options** and then click the **Video** tab.

Ensure that the MiniCam is selected here.





WEEE (Waste of Electrical and Electronic Equipment), Recycling of Electronic Products

United Kingdom

In 2006 the European Union introduced regulations (WEEE) for the collection and recycling of all waste electrical and electronic equipment. It is no longer allowable to simply throw away electrical and electronic equipment. Instead, these products must enter the recycling process.

Each individual EU member state has implemented the WEEE regulations into national law in slightly different ways. Please follow your national law when you want to dispose of any electrical or electronic products.

More details can be obtained from your national WEEE recycling agency.

Germany / Deutschland

Die Europäische Union hat mit der WEEE Richtlinie umfassende Regelungen für die Verschrottung und das Recycling von Elektro- und Elektronikprodukten geschaffen. Diese wurden von der Bundesregierung im Elektro- und Elektronikgerätegesetz – ElektroG in deutsches Recht umgesetzt. Dieses Gesetz verbietet vom 24. März 2006 an das Entsorgen von entsprechenden, auch alten, Elektro- und Elektronikgeräten über die Hausmülltonne! Diese Geräte müssen den lokalen Sammelsystemen bzw. örtlichen Sammelstellen zugeführt werden! Dort werden sie kostenlos entgegen genommen. Die Kosten für den weiteren Recyclingprozess übernimmt die Gesamtheit der Gerätehersteller.

France

En 2006, l'union Européenne a introduit la nouvelle réglementation (WEEE) pour le recyclage de tout équipement électrique et électronique.

Chaque Etat membre de l' Union Européenne a mis en application la nouvelle réglementation WEEE de manières légèrement différentes. Veuillez suivre le décret d'application correspondant à l'élimination des déchets électriques ou électroniques de votre pays.

Italy

Nel 2006 l'unione europea ha introdotto regolamentazioni (WEEE) per la raccolta e il riciclo di apparecchi elettrici ed elettronici. Non è più consentito semplicemente gettare queste apparecchiature, devono essere riciclate.

Ogni stato membro dell' EU ha tramutato le direttive WEEE in leggi statali in varie misure. Fare riferimento alle leggi del proprio Stato quando si dispone di un apparecchio elettrico o elettronico.

Per ulteriori dettagli fare riferimento alla direttiva WEEE sul riciclaggio del proprio Stato.

CE Statement

This device complies with the European Regulations for Electromagnetic Compatibility (EMC) of the European Union and it is equipped with the CE mark. This unit has to be used with high quality shielded connection cables. Only if these high quality shielded cables are used can it be sure that the EMC compatibility is not adversely influenced.

FCC Statement

Shielded cables must be used with this equipment to maintain compliance with radio frequency energy emission regulations and ensure a suitably high level of immunity to electromagnetic disturbances.

FCC Warning

This equipment has been tested and found to comply with the limits for a Class B Digital device, pursuant to part 15 of the FCC Rules. These limits are designed to provide reasonable protection against harmful interference in a residential installation. This equipment generates, uses, and can radiate radio frequency energy and, if not installed and used in accordance with the instructions, may cause harmful interference to radio communications. However, there is no guarantee that interference will not occur in a particular installation. If this equipment does cause harmful interference to radio or television reception, which can be determined by turning the equipment off and on, the user is encouraged to try to correct the interference by one or more of the following measures:

- Reorient or relocate the receiving antenna
- Increase the separation between the equipment and receiver
- Connect the equipment into an outlet on a circuit different from that to which the receiver is connected
- Consult the dealer or an experienced technician for help

You are cautioned that changes or modifications not expressly approved by the party responsible for compliance could void your authority to operate the equipment.



LINDY No's 42803, 42804

1st Edition July 2006

www.lindy.com