

# **EARTHQUAKE SOUND**



---

## **EQPXI Series Equalizers Owners Manual**

### **MODELS:**

EQ4000PXi

EQ7000PXi

---



The Sound That Will Move You.

Earthquake Sound reserves the right to amend details of the specifications without notice.  
Copyright © Earthquake Sound Corporation  
Earthquake Sound Corporation • 2727 McCone Avenue Hayward CA, 94545  
Phone: 510-732-1000 Fax: 510-732-1095



The Sound That Will Move You.

## **Table Of Contents**

|                                 |           |
|---------------------------------|-----------|
| Warranty Information / Warranty | Page • 2  |
| Warranty                        | Page • 3  |
| Wiring Configurations           | Page • 4  |
| Mounting Assembly               | Page • 5  |
| EQ-4000PXi Panel Overview       | Page • 6  |
| EQ-7000PXi Panel Overview       | Page • 7  |
| EQ-4000PXi Specifications       | Page • 8  |
| EQ-7000PXi Specifications       | Page • 9  |
| Input Gain Settings             | Page • 10 |
| Care and Maintenance            | Page • 11 |

## **Regarding Your Warranty:**

Thank you for choosing Earthquake Sound's line of EQPXi equalizers for superior enhancement of your mobile audio system. With proper installation and responsible listening, your EQ(s) will give you years of near perfect sound reproduction. We strongly recommend you to have your new EQ(s) installed by an authorized Earthquake Sound dealer: Installation professionals employed by your dealer have the correct tools and knowledge to install your product neatly and successfully. Also, when your new products are installed by an authorized dealer, your product will include a FIVE YEAR LIMITED WARRANTY.

If you choose to perform your own installation, your warranty will be subject to limitations. Dealer policies on handling warranty requests may vary from one dealer to the next. Please read the warranty information in its entirety and use good judgment when making these vital decisions.

## **Warranty and Guide Lines**

### **Five (5) year limited warranty:**

Earthquake warrants the original purchaser that all Factory Sealed New Audio Products be free from defects in material and workmanship under normal and proper use for a period of five (5) years from the date of purchase (as shown on the original bill of sale with serial number affixed/written on it). The five (5) year warranty period is valid only if an authorized Earthquake dealer properly installs the product and the warranty registration card is properly filled out and sent to Earthquake Sound Corporation. If a non-authorized party installs the product a ninety (90) day warranty period will be applied.

### **(A) Five (5) years limited warranty plan coverage guidelines:**

- **First year:** Earthquake pays for labor, parts, and ground freight (only in US mainland, not including Alaska and Hawaii).
- **Second year:** Earthquake pays for labor and parts only, customer must pay freight both ways.
- **Third, fourth & fifth year:** Earthquake pays labor only. Customer must pay for parts and freight both ways.

### **(B) Warning:**

Products (sent for repair) that are tested by Earthquake technicians and deemed to have no problem(s) will not be covered by the five (5) year limited warranty. Customer will be charged a minimum of one (1) hour of labor (ongoing rates) plus shipping charges back to customer.

## **Warranty Continued**

### **(C) Earthquake will repair or replace - at our option - all defective products/parts subject to the following provisions:**

- Defective products/parts have not been altered or repaired by other than an Earthquake factory approved technician.
- Products/parts are not subjected to negligence, misuse, improper use, or accident, damaged by improper line voltage, used with incompatible products, or have its serial number or any part of it altered, defaced or removed, or have been used in any way that is contrary to Earthquake's written instructions.

### **(D) Warranty Limitations:**

Warranty does not cover products that have been modified or abused. Including but not limited to the following:

- Damages to speaker cabinet and cabinet finish due to misuse, abuse, or use of improper use of cleaning materials/methods.
- Bent speaker frame, broken speaker connectors, holes in speaker cone, surround & dust cap, burnt speaker voice coil.
- Fading, deterioration of speaker components & finish due to improper exposure to elements.
- Bent amplifier casing, damaged finish on the casing due to abuse, misuse, or improper use of cleaning material.
- Burnt tracers on PCB.
- Product/part damaged due to poor packaging or abusive shipping conditions.
- Subsequent damage to other products.

**A warranty claim will not be valid if the warranty registration card is not properly filled & returned to Earthquake with a copy of the sales invoice.**

### **(E) Service Request:**

To receive product/s service, contact Earthquake service department at (510) 732-1000 and request an RMA number (Return Material Authorization), items shipped without a valid RMA number will be refused. Make sure you provide us with your complete/correct shipping address, a valid phone number, and a brief description of the problem you are experiencing with the product. In most cases, our technicians might be able to resolve the problem over the phone, thus eliminating the need to ship the product.

### **(F) Shipping Instructions:**

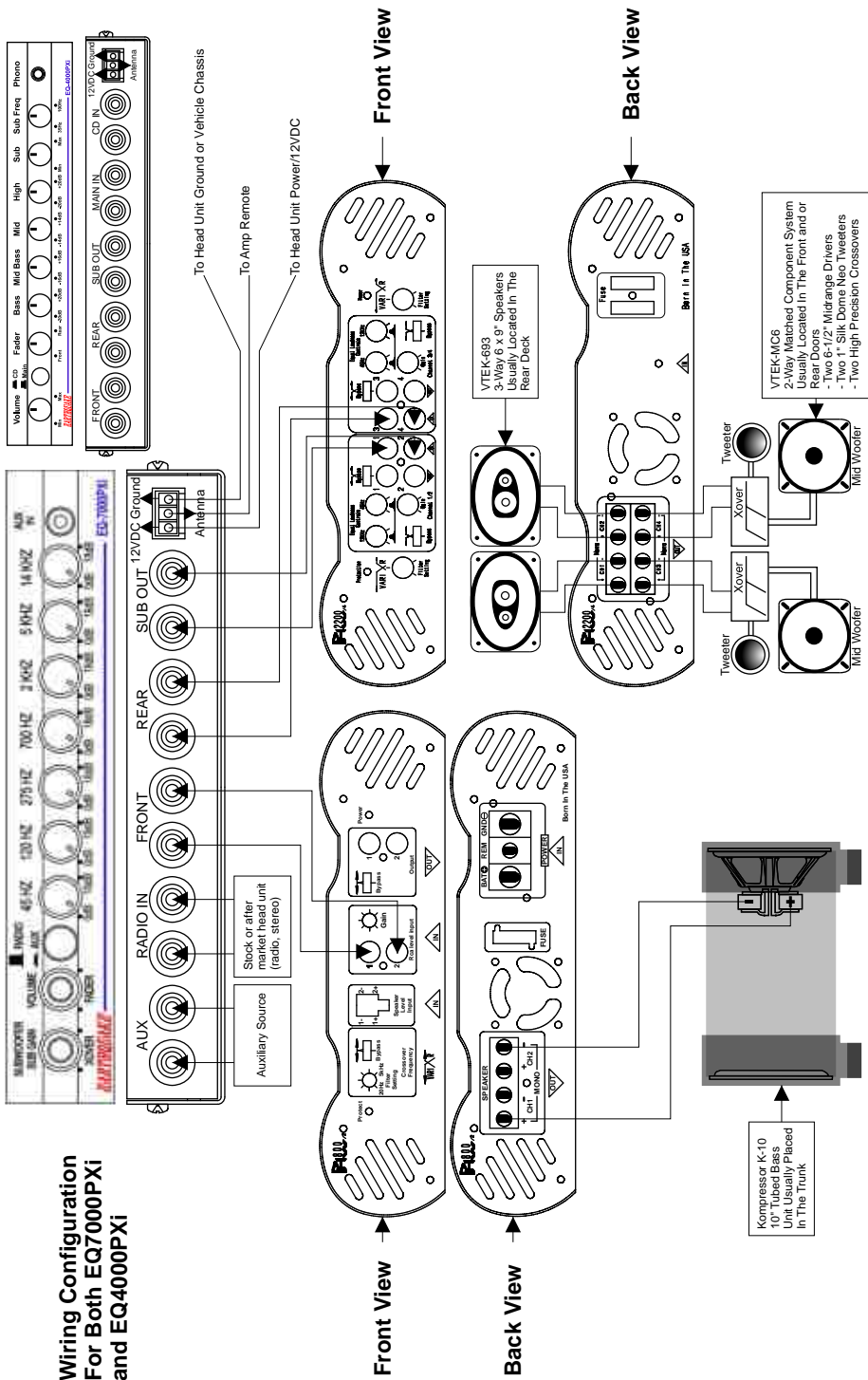
Product/s must be packaged in its original protective box(s) to minimize transport damage. Shipper claims regarding items damaged in transit must be presented to carrier. Earthquake Sound Corporation reserves the right to refuse product improperly packed. Original bill of sale must accompany product returned for service. We encourage you to include with the package a written description of the problem. Ship product to: Earthquake Sound Corp. 2727 Mc Cone Avenue, Hayward, CA 94545. Ph (510) 732-1000. You are responsible for the cost of shipping the product to Earthquake Sound Corporation.

### **(G) Disputes Resolution:**

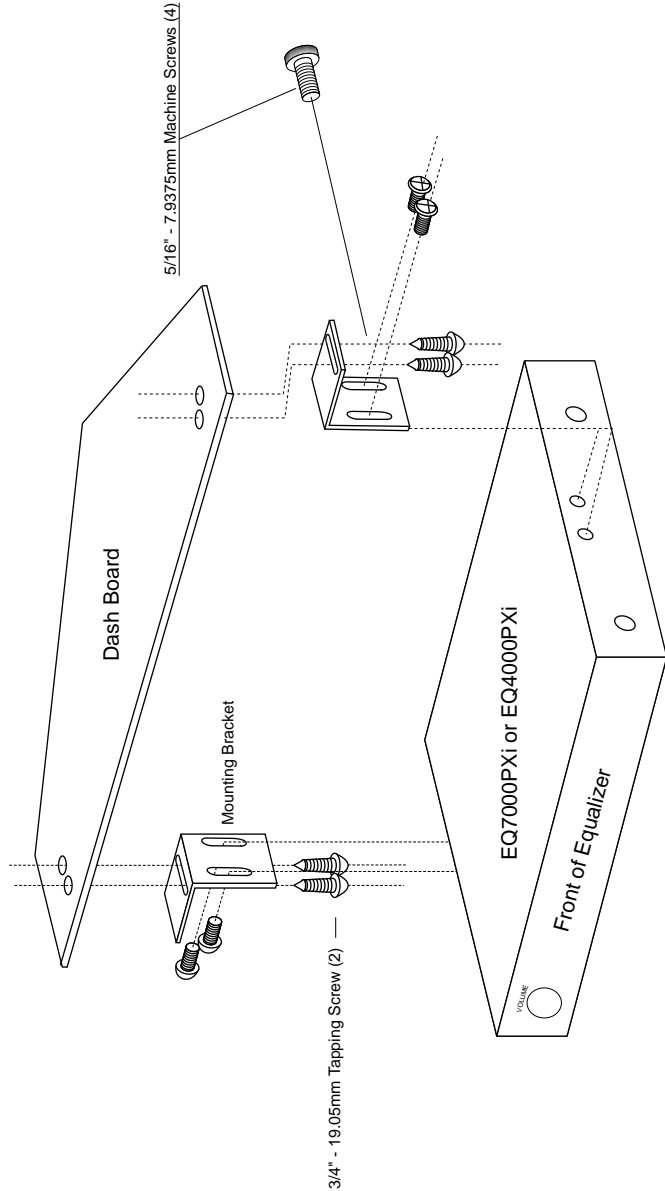
All disputes - between clients and Earthquake Sound Corporation - resulting from the five (5) years limited warranty policy must be resolved according to the laws & regulations of the county of Alameda -California.

**Alternatively you may register your products online at  
[http://earthquakesound.com/form\\_reg.htm](http://earthquakesound.com/form_reg.htm)**

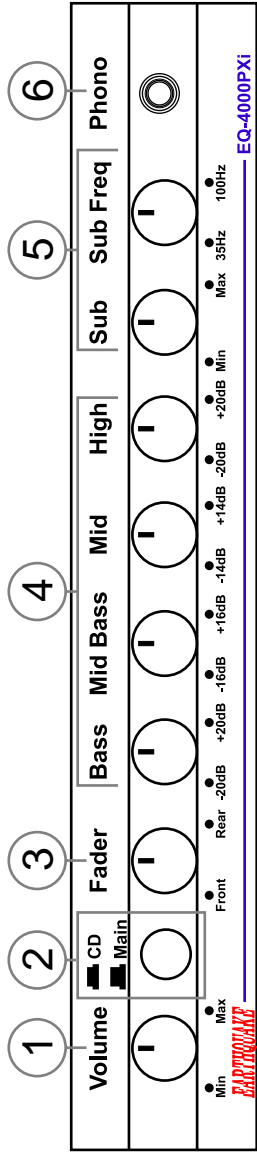
# Wiring Configuration For Both EQ7000PXi and EQ4000PXi



## Mounting Assembly

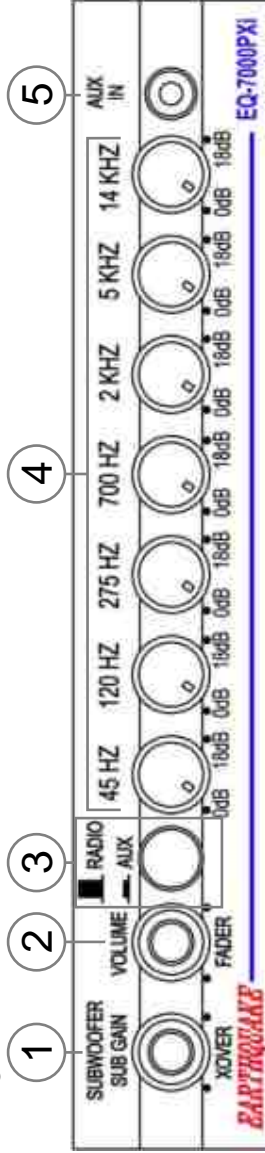


## EQ4000PXI Panel Overview



- 1. Main Volume Control:** Push in once to eject button then rotate to adjust volume.
- 2. CD/Main Toggle:** Push button to switch between CD changer or Main (MAIN includes: Radio & Frontal phono/auxiliary input). If the front mounted auxiliary input is in use, in other words an iPod or MP3 player are connected; the EQ-4000PXI/EQ-7000PXI will automatically default to the front mounted aux input when the unit is switched to Main from CD.
- 3. Fader Action:** Use this rotary knob to blend more action into either the Front or Rear channels of your system.
- 4. 4-Band Rotary Controls:** Gives you control of the higher musical frequency ranges that most head units cannot accomplish. These controls allow end users to tailor their music to personal preference and precision.
- 5. Subwoofer Level / Frequency Adjust:** Gives you complete control of low musical frequency ranges. The Sub knob is equal to level control. It allows you to adjust subwoofer sound levels for a particular source type: Tape, broadcast, CD, etc.  
  
The subwoofer frequency crossover allows you to adjust the cross over point for your subwoofer system. The EQ-4000PXI features separate dual RCA outputs for the subwoofer channel, so that the subwoofer(s) can run on a separate amplifier or separate channels of a multi-channel amplifier.  
  
The crossover is adjustable from 35Hz to 100Hz. Depending on the subwoofer frequency response adjust this knob to the most desired setting.
- 6. Phono / Auxiliary Input:** This unique feature is for easy iPod and MP3 hook up. Simply plug-n-play. Once this connection has been made it will override the MAIN input plugged into the back of the unit.

## EQ7000PXI Panel Overview



- 1. Subwoofer Level / Subwoofer Crossover Adjust:** Gives you complete control of low musical frequency ranges. The Sub knob is equal to level control. It allows you to adjust subwoofer sound levels for a particular source type: Tape, broadcast, CD, etc.  
  
The subwoofer frequency crossover allows you to adjust the cross over point for your subwoofer system. The EQ-4000PXI features separate dual RCA outputs for the subwoofer channel, so that the subwoofer(s) can run on a separate amplifier or separate channels of a multi-channel amplifier.  
  
The crossover is adjustable from 35Hz to 100Hz. Depending on the subwoofer frequency response adjust this knob to the most desired setting.
- 2. Main Volume / Fader Action Control:** The lower and wider knob is the volume control and the skinnier top knob is the Fader control.  
  
Use Main volume control to adjust the system as one.
- 3. CD/Main Toggle:** Push button to switch between CD changer or Main (MAIN includes: Radio & Frontal phono/auxiliary input). If the front mounted auxiliary input is in use, in other words an iPod or an MP3 player are connected; the EQ-4000PXI/EQ-7000PXI will automatically default to the front mounted aux input when the unit is switched to Main from CD.  
  
Use the Fader knob to blend more action into either the Front or Rear channels of your system.
- 4. 7-Band Rotary Controls:** Gives you control of the higher musical frequency ranges that most head units cannot accomplish. These controls allow end users to tailor their music to personal preference and precision. And the each knob has mid point notch to let the user know when the knob is centered.
- 5. Phono/Auxiliary Input:** This unique feature is for easy iPod and MP3 hook up. Simply plug-n-play. Once this connection has been made it will override the AUX input plugged into the back of the unit.

### **EQ4000PXi Specifications**

**Operating Voltage:** 10.5---16VDC

**Idle:** 280 mA

**Recommended fuse size:** 1 Ampere

**Input sources:** 2 stereo RCA sources, 1 Phono source

**Input sensitivity:** Adjustable from 100mVrms up to 14 Vrms

**Input impedance:** Variable from 8 kOhm up to 10.2 Kohm

**Output Impedance:**

**Sub channel:** 510 Ohm

**Front & Rear channels:** 2.2 Kohm

**Output Level:**

**Subwoofer channel:** 5 Vrms @ 0.1% THD

**Front & Rear channels:** 4 Vrms @ 0.1% THD

**THD @ 3 Volts output:** 0.05%

**Frequency response:** 15 - 34000Hz @ -3dB

**Subwoofer frequency control range:** 35 to 100Hz (@ -3db, 18dB/oct.)

**Subwoofer upper cut off frequency:** 100Hz

**Channel separations:** 68dB

**Signal to noise ratio:** 92dB

**Center frequencies (in Hz):** 50, 250, 275, 2200, 16000

**Control Range:** 30~40dB (12 O'clock is the Bypass position)

**Dimensions(H x W x D):** 1" x 7" x 4-1/4" (With Out Face Plate)

### **EQ4000PXi Features**

- \* 4-band Graphic Equalizer
- \* 6-channel RCA Outputs (front/rear/subwoofer)
- \* Adjustable Master Volume Level Control
- \* Adjustable Subwoofer Level Control
- \* 3 Input Sources
- \* Input Gain (it Sets The Maximum Volume Level Achievable By The Front Controls)
- \* Gold Plated RCAs
- \* Easy Snap On Connector
- \* Red Led Background Display

### **EQ7000PXi Specifications**

**Operating Voltage:** 10.5---16VDC

**Idle:** 170 mA

**Recommended fuse size:** 1 Ampere

**Input sources:** 2 stereo RCA sources, 1 Phono source

**Input sensitivity:** Adjustable from 100mVrms up to 14 Vrms

**Input impedance:** Variable from 3.8 Kohm up to 10.2 Kohm

**Output Impedance:**

**Sub channel:** 510 Ohm

**Front & Rear channels:** 2.2 Kohm

**Output Level:**

**Subwoofer channel:** 11 Vrms @ 0.1% THD

**Front & Rear channels:** 7 Vrms @ 0.1% THD

**THD @ 3 Volts output:** 0.003%

**Frequency response:** 15 - 34000Hz @ -3dB

**Subwoofer frequency control range:** 60 to 160Hz (@ -3db, 18dB/oct.)

**Subwoofer upper cut off frequency:** 160Hz

**Channel separations:** 68dB

**Signal to noise ratio:** 96dB

**Center frequencies (in Hz):** 45, 120, 275, 700, 2000, 5000, 14000

**Control Range:** 18dB (12 O'clock is the Bypass position)

**Dimensions(H x W x D):** 1" x 7" x 4-1/4" (With Out Face Plate)

### **EQ7000PXi Features**

- \* 7-band Graphic Equalizer
- \* 6-channel RCA Outputs (front/rear/subwoofer)
- \* Adjustable Master Volume Level Control
- \* Adjustable Subwoofer Level Control
- \* 3 Input Sources
- \* Input Gain (it Sets The Maximum Volume Level Achievable By The Front Controls)
- \* Gold Plated RCAs
- \* Easy Snap On Connector
- \* Bypass Position Notches On All 7-bands
- \* Blue Background LEDs

**Input Gain setting:**

Designed to set the maximum upper volume level, the Input Gain is a tool for installer to protect the system from excessive high volume. Setting the Input Gain level depends on the sources' maximum signal strength (expressed in Voltage). Installer needs to know the output voltage of the source units and set the Input gain accordingly.

**Sample of voltage output with reference to voltage input:**

**EQ7000PXI**

| Input Gain's Position | Source Voltage | Volume Control Position | Front & Rear Output V @ 0.1% THD | Subwoofer Output Voltage (Sub Gain @ MAX) |
|-----------------------|----------------|-------------------------|----------------------------------|---|
| 10 O'clock            | >13V           | MAX                     | 7V                               | 12V                                       |
| 12 O'clock            | 4V             | MAX                     | 7V                               | 11.2V                                     |
| 2 O'clock             | 3.3V           | MAX                     | 7V                               | 11.2V                                     |
| MAX                   | 3V             | MAX                     | 7V                               | 11.2V                                     |
| MAX                   | 1V             | MAX                     | 3V                               | 7.7V                                      |

**EQ4000PXI**

| Input Gain's Position | Source Voltage | Volume Control Position | Front & Rear Output V @ 0.1% THD | Subwoofer Output Voltage (Sub Gain @ MAX) |
|-----------------------|----------------|-------------------------|----------------------------------|---|
| 9 O'clock             | >13V           | MAX                     | 4.2V                             | 5V  |
| 12 O'clock            | 2V             | MAX                     | 4V                               | 5V  |
| 3 O'clock             | 1V             | MAX                     | 3V                               | 5V  |
| MAX                   | 200mV          | MAX                     | 600mV                            | 1.6V                                      |

**Care and Maintenance**

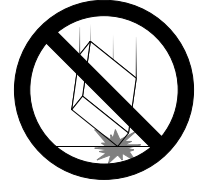
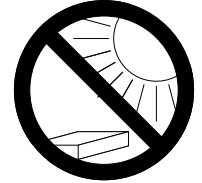
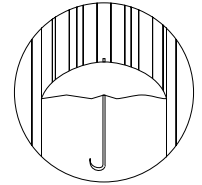
Your Earthquake Stereo 7-Band Graphic Equalizer is an example of superior design and craftsmanship. The following advisories will help you care for your equalizer so you can enjoy it for years to come.

Keep the graphic equalizer dry. If it gets wet, wipe it dry immediately. Liquids contain minerals that can corrode electronic circuits. Additionally liquids can cause severe electrical shock.

Use and store the graphic equalizer only in normal temperature environments. Temperature extremes can shorten the life of electronic devices and warp or melt plastic parts.

Handle the graphic equalizer gently and carefully. Dropping it can damage the circuits or cause components to break or become loose. These kind of actions can cause the units to work poorly or improperly.

Keep the graphic equalizer away from dust and dirt, which can cause premature wear of parts.



**CAUTION:** Earthquake products are capable of generating high sound pressure levels. You should exercise caution when operating these products. Long term exposures to high levels of sound pressure will cause permanent damage to your hearing. Sound pressure levels exceeding 85dB can be dangerous with constant exposure. Set your audio system to a comfortable loudness level. Earthquake Sound Corporation does not assume liability for damages resulting from the direct use of Earthquake amplifiers or other Earthquake products, and urges users to play their music at moderate listening levels.

| SOUND LEVEL | DURATION IN HOURS | The Chart (on The Side) Shows The Elements.u.s. Governments Occupational Safety And Health Administration (osha) Regulations Which Were In Effect At The Time Of This Publication For Permissible Noise Exposure, Per 29cfr1910.95, Table G-16. |
|-------------|-------------------|---|
| 90          | 8                 |   |
| 92          | 6                 |   |
| 95          | 4                 |   |
| 97          | 3                 |   |
| 100         | 2                 |   |
| 102         | 1 - 1 1/2         |   |
| 105         | 1                 |   |
| 110         | 1/2               |   |
| 115         | 1/4 or less       |   |