



# PUSH REEL LAWN MOWER

**Model 97781**

## OPERATING AND MAINTENANCE INSTRUCTIONS



Diagrams within this manual may not be drawn proportionally.

Due to continuing improvements, actual product may differ slightly from the product described herein.

**Distributed exclusively by Harbor Freight Tools®.**

3491 Mission Oaks Blvd., Camarillo, CA 93011

Visit our website at: <http://www.harborfreight.com>



**Read this material before using this product.  
Failure to do so can result in serious injury.  
SAVE THIS MANUAL.**

Copyright© 2008 by Harbor Freight Tools®. All rights reserved. No portion of this manual or any artwork contained herein may be reproduced in any shape or form without the express written consent of Harbor Freight Tools.

**For technical questions or replacement parts, please call 1-800-444-3353.**

---

## SAVE THIS MANUAL

---

Keep this manual for the safety warnings and precautions, assembly, operating, inspection, maintenance and cleaning procedures. Write the product's serial number in the back of the manual near the assembly diagram (or month and year of purchase if product has no number). Keep this manual and the receipt in a safe and dry place for future reference.

---


## IMPORTANT SAFETY INSTRUCTIONS

---

**In this manual, on the labeling, and all other information provided with this product:**

## READ ALL INSTRUCTIONS

### Personal Safety

1. Dress Properly - Do not wear loose clothing or jewelry. They can be caught in moving parts. Use of rubber gloves and substantial footwear is recommended when working outdoors. Wear protective hair covering to contain long hair.
2.  Wear ANSI-approved safety goggles and heavy-duty work gloves. Use face or dust mask. Wear steel-toed shoes during use.
3. Remove objects from cutting area before use.
4. Do not Overreach - Keep proper footing and balance at all times.

5. Stay Alert - Watch what you are doing. Use common sense. Do not operate appliance when you are tired.
6. Avoid running the Lawn Mower over rocks and any other hard objects.
7.  **Do not grasp the exposed cutting blades or cutting edges when picking up or holding the appliance.**
8.  **Keep hands and feet away from cutting area.**
9.  **Keep hands away from blades.**
10.  **Wear thick jeans and steel-toed work boots to help prevent injury caused by flying debris.**

### Appliance Use and Care

1. **Keep Children Away - All bystanders should be kept at a distance from work area.**
2. Use Right Appliance - Do not use appliance for any job except that for which it is intended.
3. Do not Force Appliance - It will do the job better and with less likelihood of injury at the rate for which it was designed.
4. Keep all guards in place and in good working order.
5. Store Idle Appliances Indoors - When not in use, appliances should be stored indoors in dry, and high or locked-up place - out of reach of children.

6. Maintain Appliance With Care - Keep cutting edge sharp and clean for best performance and to reduce the risk of injury.
  7. Check for alignment of moving parts, binding of moving parts, breakage of parts, mounting, and any other condition that may affect its operation. Any part that is damaged should be properly repaired or replaced by a qualified technician unless indicated elsewhere in this manual.
  8. When servicing use only identical replacement parts.
  9. **Keep blade sharp.** Have it sharpened by a professional when grass is not being cut properly.
1. Gently push on each side of the Bar (23) and slide it onto the knobs on the inside of the Shaft Holder (1).
  2. Secure both Handle Shafts to the Bar using Nuts (22) and Bolts (21).
  3. Attach the Handle (19) to the Handle Shafts using Nuts (22) and Bolts (21).
  4. The Roller Adjustment Knobs (16) can be used to adjust the rollers up or down, depending on the length of grass desired for the lawn.
  5. Before operating the Lawn mower, put on ANSI-approved safety goggles and other safety gear. Safety goggles and other safety gear are sold separately.
  6. Clean, then store the appliance indoors out of children's reach.

---

## UNPACKING

---

When unpacking, check to make sure that the item is intact and undamaged. If any parts are missing or broken, please call Harbor Freight Tools at the number shown on the cover of this manual as soon as possible.

---

## ASSEMBLY AND OPERATION INSTRUCTIONS

---



**Read the ENTIRE IMPORTANT SAFETY INSTRUCTIONS section at the beginning of this manual including all text under subheadings therein before set up or use of this product.**

**Note:** For additional information regarding the parts listed in the following pages, refer to the Assembly Diagram near the end of this manual.

---

## MAINTENANCE AND SERVICING

---



**Procedures not specifically explained in this manual must be performed only by a qualified technician.**

1. **BEFORE EACH USE**, inspect the general condition of the Lawn mower. Check for loose screws, misalignment or binding of moving parts, cracked or broken parts any other condition that may affect its safe operation.
2. **AFTER USE**, clean external surfaces of the appliance with clean cloth. To minimize the chance of corrosion, after each use, wipe blade edges with a cloth soaked in lubricating oil before storage.

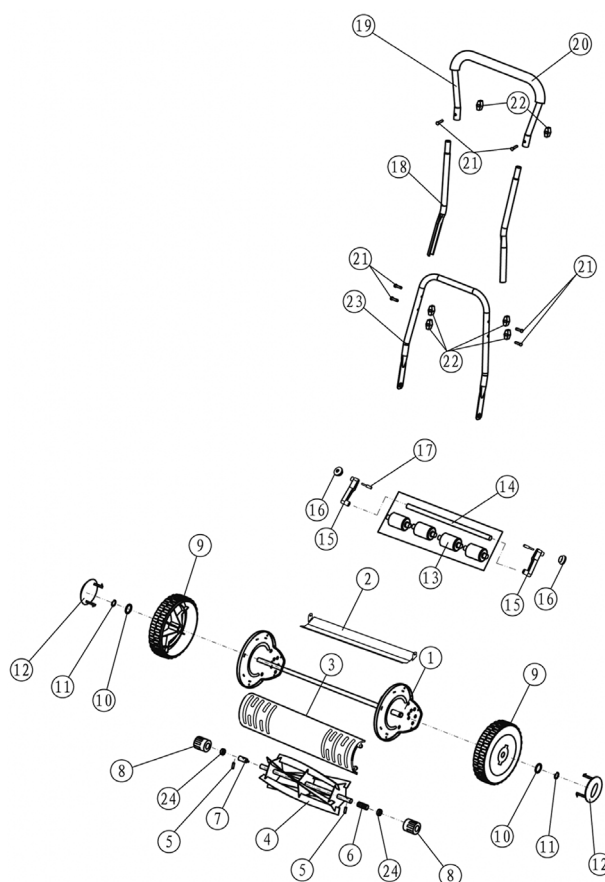
## PLEASE READ THE FOLLOWING CAREFULLY

THE MANUFACTURER AND/OR DISTRIBUTOR HAS PROVIDED THE PARTS LIST AND ASSEMBLY DIAGRAM IN THIS MANUAL AS A REFERENCE TOOL ONLY. NEITHER THE MANUFACTURER OR DISTRIBUTOR MAKES ANY REPRESENTATION OR WARRANTY OF ANY KIND TO THE BUYER THAT HE OR SHE IS QUALIFIED TO MAKE ANY REPAIRS TO THE PRODUCT, OR THAT HE OR SHE IS QUALIFIED TO REPLACE ANY PARTS OF THE PRODUCT. IN FACT, THE MANUFACTURER AND/OR DISTRIBUTOR EXPRESSLY STATES THAT ALL REPAIRS AND PARTS REPLACEMENTS SHOULD BE UNDERTAKEN BY CERTIFIED AND LICENSED TECHNICIANS, AND NOT BY THE BUYER. THE BUYER ASSUMES ALL RISK AND LIABILITY ARISING OUT OF HIS OR HER REPAIRS TO THE ORIGINAL PRODUCT OR REPLACEMENT PARTS THERETO, OR ARISING OUT OF HIS OR HER INSTALLATION OF REPLACEMENT PARTS THERETO.

## PARTS LIST

Part	Description	Qty
1	Shaft Holder	2
2	Cutting Plate	1
3	Front Cover	1
4	Reel	1
5	Pin	2
6	Spring	1
7	Spacer	1
8	Gear	2
9	Wheel	2
10	Washer	2
11	Snap Ring	2
12	Wheel Cover	2
13	Roller	4
14	Roller Shaft	1
15	Roller Shaft Mount	2
16	Roller Adjustment Knob	2
17	Adjustment Shaft	2
18	Handle Shaft	2
19	Handle	1
20	Handle Pad	1
21	Bolt	6
22	Nut	6
23	Bar	1
24	Bearing	2

## ASSEMBLY DIAGRAM



**Record Product's Serial Number Here:**

**Note:** If product has no serial number, record month and year of purchase instead.

**Note:** Some parts are listed and shown for illustration purposes only, and are not available individually as replacement parts.