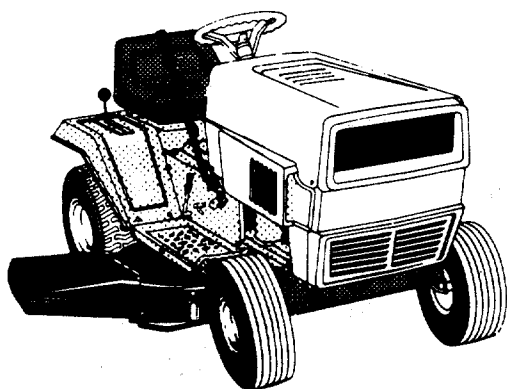
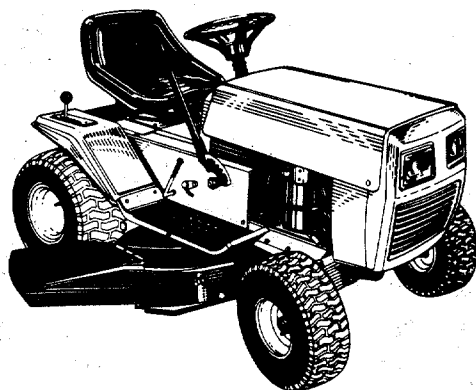


OWNER'S GUIDE

ILLUSTRATED PARTS • PARTS LISTS



TRANSMATIC FRONT ENGINE LAWN TRACTORS



Model Series 600 thru 669 Lawn Tractors



WARNING: This unit is equipped with an internal combustion engine and should not be used on or near any unimproved forest-covered, brush-covered or grass-covered land unless the engine's exhaust system is equipped with a spark arrester meeting applicable local or state laws (if any). If a spark arrester is used, it should be maintained in effective working order by the operator.

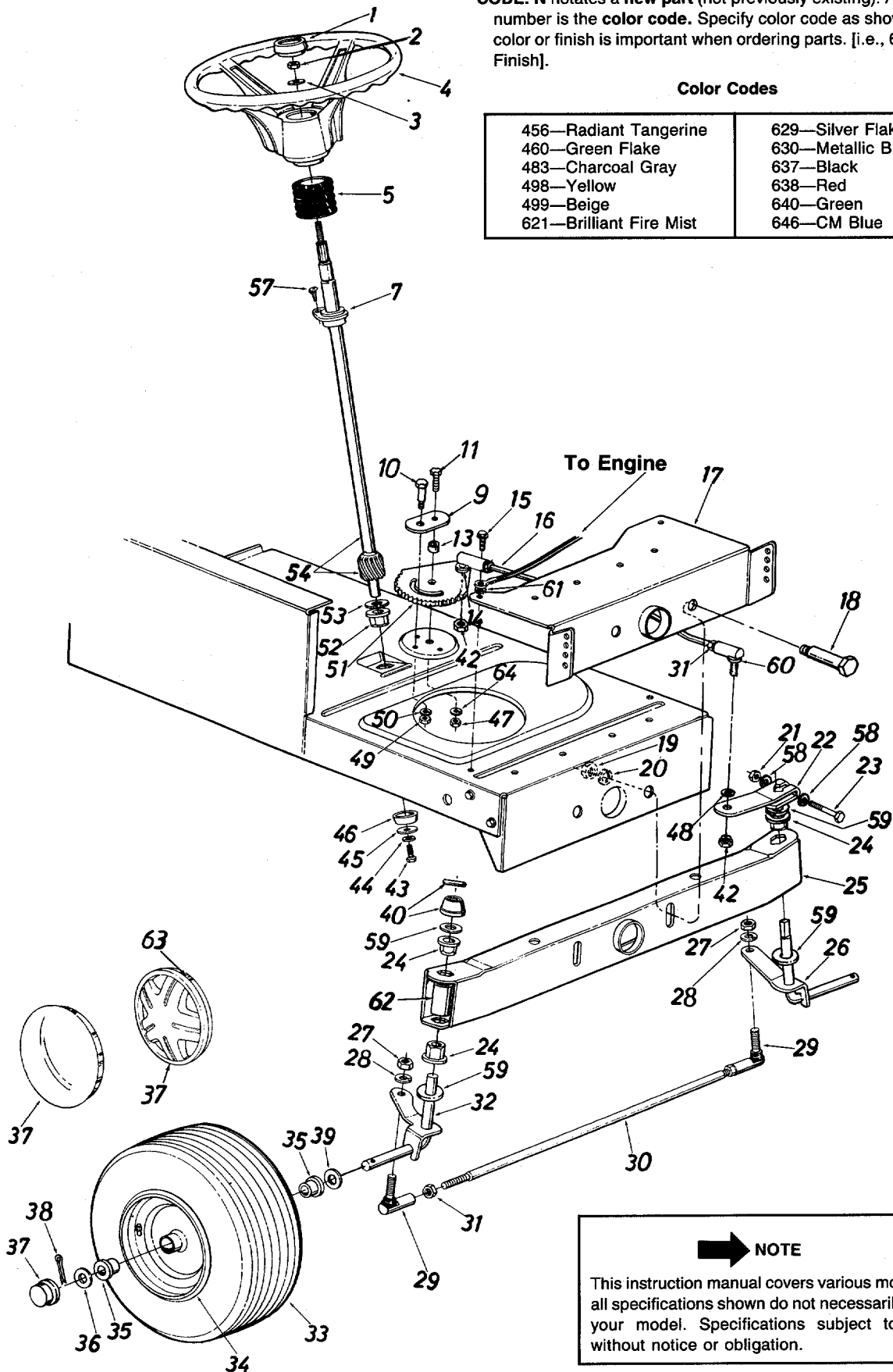
In the State of California the above is required by law (Section 4442 of the California Public Resources Code). Other states may have similar laws. Federal laws apply on federal lands. A spark arrester for the muffler is available through your nearest engine authorized service dealer or contact the service department, P.O. Box 360900, Cleveland, Ohio 44136.

Models 600 thru 669

CODE: N notates a new part (not previously existing). A three digit number is the color code. Specify color code as shown below if color or finish is important when ordering parts. [i.e., 638 for Red Finish].

Color Codes

456—Radiant Tangerine	629—Silver Flake
460—Green Flake	630—Metallic Blue
483—Charcoal Gray	637—Black
498—Yellow	638—Red
499—Beige	640—Green
621—Brilliant Fire Mist	646—CM Blue



Models 600 thru 669

PARTS LIST FOR FRONT ENGINE LAWN TRACTORS

QTY.	PART NO.	CODE	DESCRIPTION	REF. NO.	PART NO.	CODE	DESCRIPTION
1	731-0220		Steering Wheel Cap	35	**		Bearing
2	712-0237		Hex L-Nut 5/16-24 Thd.	36	736-0285		FI-Wash. .635 I.D. x 1.59" O.D.
3	736-0242		Belleville Wash. .345" I.D.				Front Wheel Hub Cap
4	731-0805		Steering Wheel (3 Spoke)	37	731-0484A		Front Wheel Hub Cap
	731-0806A		Steering Wheel (4 Spoke)		734-0541		(Chrome—Optional)
5	731-0559		Steering Bellow—4.5" (Style 2, 3, 5, 7, 8)		734-1503		Spoked Hub Cap (Optional)
	731-0954		Steering Bellow—9" (Style 0, 4, 6, 9)	38	714-0470		Cotter Pin 1/8" Dia. x 1.25"*
7	741-0356		Flange Bearing .890 I.D. x 1.36 O.D. (Style 2, 3, 5, 7, 8)	39	736-0187		FI-Wash. .640" I.D. x 1.24" O.D.
9	17198		Retainer Plate	40	726-0214		Push Cap 5/8" Dia. Rod (Used w/Plastic Wheel Brgs.)
0	738-0141		Shoulder Bolt .437" Dia. x .35 Lg. 5/16-18 Thd.		715-0150		Spring Roll Pin (Used w/Bronze Wheel Brgs.)
1	710-0152		Hex Bolt 3/8-24 x 1.0" Lg. (Grade 5)	42	712-0711		Hex Jam Nut 3/8-24 Thd.*
3	750-0535		Spacer .380" I.D. x .625" O.D. x .227	43	710-0538		Hex L-Bolt 5/16-18 x .62"*
4	736-0169		L-Wash. 3/8" I.D.*	44	736-0119		L-Wash. 5/16" I.D.*
5	710-0726		Hex Wash. Hd. Self-Tap Scr.	45	736-0343		FI-Wash. .33" I.D. x 1.25" O.D.
6	711-0788		Steering Drag Link	46	750-0532		Spacer (Plastic)
7	17621		Front Pivot Brkt.	47	712-0241		Hex Nut 3/8-24 Thd.*
8	738-0527		Shoulder Bolt .498" Dia. x 2.04 Lg. 3/8-16 Thd.	48	736-0169		L-Wash. 3/8" I.D.*
9	712-0798		Hex Nut 3/8-16 Thd.*	49	712-0267		Hex Nut 5/16-18 Thd.*
0	736-0169		L-Wash. 3/8" I.D.*	50	736-0119		L-Wash. 5/16" I.D.*
1	712-0237		Hex Cent. L-Nut 5/16-24 Thd.	51	717-0622		Steering Gear Segment
2	16481		Steering Arm Front Axle	52	741-0225		Hex Flg. Brg. .634 I.D.
3	710-0772		Hex Bolt 5/16-24 x 2.00" Lg. (Grade 5)	53	736-0187		FI-Wash. (Hardened)
4	741-0225		Hex Flg. Brg. .634 I.D.	54	738-0743	N	Steering Shaft
5	14608		Pivot Bar Ass'y.	57	710-0837		Oval Hd. Cr.—Sunk Scr. #10 x 5/8" Lg. (Style 2, 3, 5, 7, 8)
6	**		Front Axle Ass'y.—L.H.	58	736-0271		Wave-Wash. .32" I.D. x .62" O.D.
7	712-0241		Hex Nut 3/8-24 Thd.*	59	736-0187		FI-Wash. (Hardened)
8	736-0169		L-Wash. 3/8" I.D.*	60	723-3018		Drag Link Ball Joint 3/8-24 Thd.
9	723-3018		Ball Joint 3/8-24 Thd.	61	736-0607		Ext. L-Wash. 5/16" I.D.
0	747-0753		Tie Rod	62	731-1134		Plastic Tube
1	712-0711		Hex Jam Nut 3/8-24 Thd.*	63	727-0425A	N	Spring Clip (Used w/Spoked Hub Cap)
2	**		Front Axle Ass'y.—R.H.	64	736-0356		Bell-Wash. .39" I.D. x 1.38" O.D.
3	**		Wheel Ass'y. Comp.				
4	**		Front Wheel Rim Only				

*For faster service obtain standard nuts, bolts and washers locally. If these items cannot be obtained locally, order by part number and size as shown on parts list.

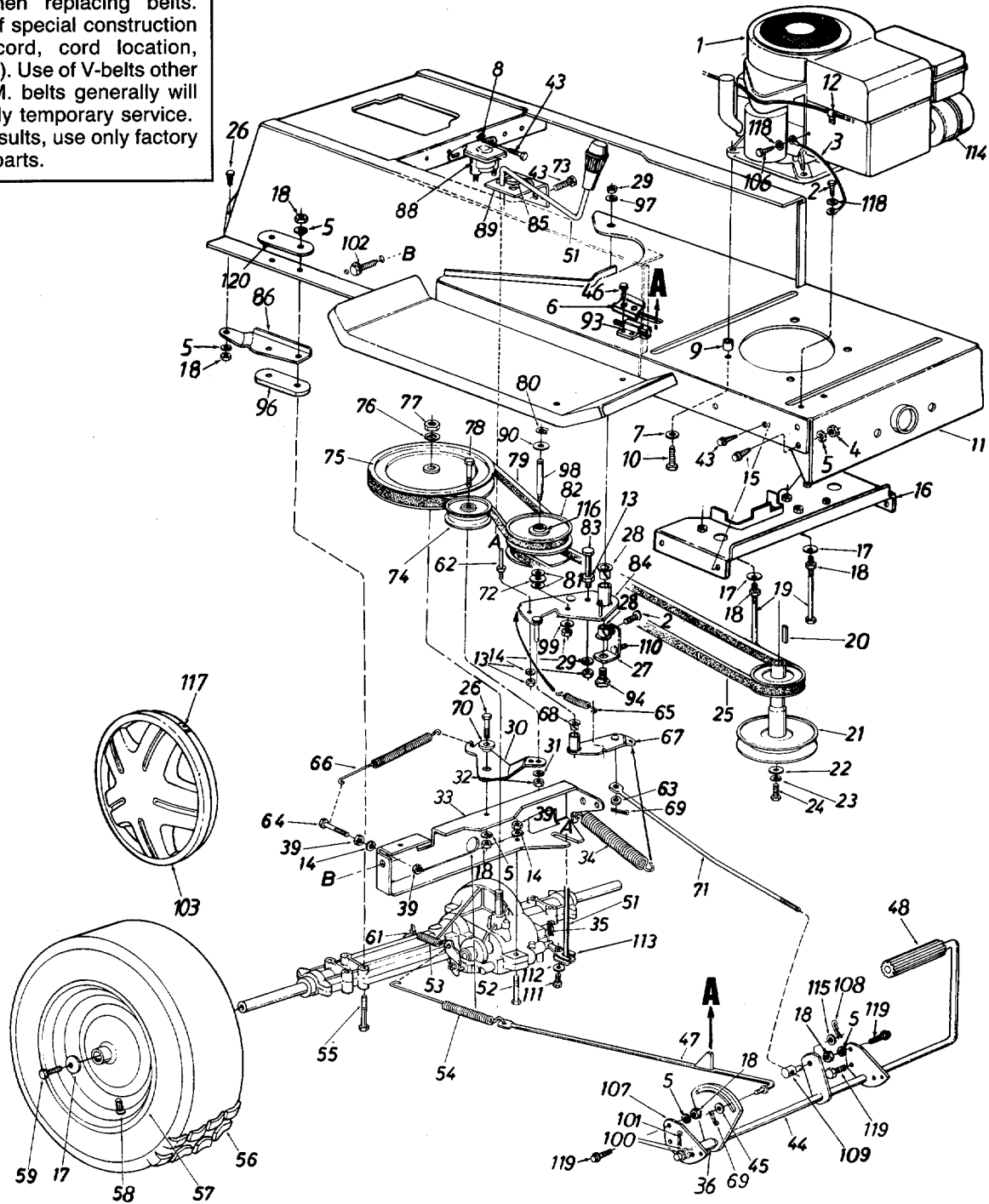
**FRONT WHEEL CHART

Description	15" x 6" w/Plastic Bearing	13" x 5" w/Plastic Bearing	15" x 6" w/Bronze Brg.	13" x 5" w/Bronze Brg.
Wheel Assembly Comp.	734-0863	734-1229	734-1619	734-1620
Tire Only	734-0864	734-0298	734-0864	734-0298
Rim Only	734-0997A	734-1227	734-0997A	734-1227
Bearing	741-0487	741-0487	741-0353	741-0353
Air Valve	734-0255	734-0255	734-0255	734-0255
Grease Fitting	737-0280	737-0280	737-0280	737-0280
Front Axle Ass'y.—L.H.	17585	17585	17753	17753
Front Axle Ass'y.—R.H.	17584	17584	17754	17754

NOTE: If brand of tire is important, order by part number and description (description is printed on the sidewall of tire) [i.e. Armstrong Super Turf, Odayear Softrac, Carlisle Turf Saver, etc.].

Models 600 thru 669

IMPORTANT: Use only Original Equipment Manufacturer (O.E.M.) V-belts when replacing belts. They are of special construction (type of cord, cord location, length, etc.). Use of V-belts other than O.E.M. belts generally will provide only temporary service. For best results, use only factory approved parts.



****REAR WHEEL CHART**

Description	18" x 9.50"	18" x 8.50"	18" x 6.50"	20" x 8.0"	20" x 10.0"
Wheel Ass'y. Comp.	734-0817	734-0601	734-0592	734-1675	734-1064
Tire Only	734-0448	734-0516	734-0294	734-1596	734-1065
Rim Only	734-0603	734-0603	734-0594	734-0603A	734-0603A

Note: If brand of tire is important, order by part number and description (description printed on the sidewall of tire [i.e. Armstrong Super Turf, Goodyear Softrac, Carlisle Turf Saver, etc.].

Models 600 thru 669

PARTS LIST FOR FRONT ENGINE LAWN TRACTORS

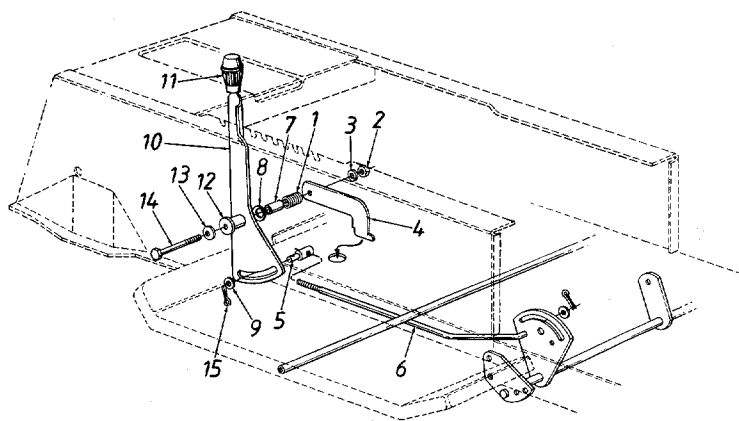
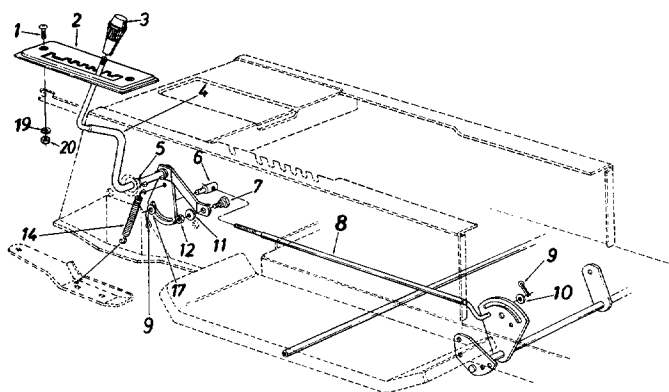
EF. O.	PART NO.	CODE	DESCRIPTION	REF. NO.	PART NO.	CODE	DESCRIPTION
1	—		Engine	54	732-0413		Ext. Spring 7.08" (Used w/20" Wheels)
2	710-0726		Hex Wash. AB-Tap Scr. 5/16" x .75"		732-0642		Ext. Spring 7.33" (Used w/18" Wheels)
3	725-0980		Electric Ground Wire				Hex Bolt 5/16-18 x 3.75" Lg. (Used w/18" Wheels)
4	712-0123		Hex Nut 5/16-24 Thd.*	55	710-3185	N	Hex Bolt 5/16-18 x 2.75" (Used w/20" Wheels)
5	736-0119		L-Wash. 5/16" I.D.*				Wheel Ass'y. Comp.
6	17962	N	Switch Plate		710-0176		Wheel Rim Only
7	736-0247		FI-Wash. .406" I.D. x 1.25"				Air Valve (Service Only)
9	750-0777		Spacer	56	**		Hex Bolt 5/16-24 x .75" Lg.*
8	736-0222		Ext. L-Wash. 1/4" I.D.	57	**		Brake Return Spring Anchor
10	710-1007		Hex L-Wash. Tap Scr. 3/8-16 x 1.5" Lg. (B&S)	58	734-0255		Belt Guard Pin 1/4-20 Thd.
	710-0650		Hex Wash. Hd. TT-Tap Scr. 5/16-18 x 7/8" Lg. (Tec.)	59	710-0627		FI-Wash. .34" I.D. x .68" O.D.
11	17620B	N	Lower Frame Ass'y.	61	732-0454		Hex Bolt 1/4-28 x 1.25" Lg.*
12	726-0235		Speed Clip	62	711-0768		Ext. Spring
13	712-0287		Hex Nut 1/4-20 Thd.*	63	736-0275		Ext. Spring .62" O.D. x 6.12"
14	736-0329		L-Wash. 1/4" I.D.*	64	710-0428		Variable Speed Torque Brkt. Ass'y.
15	710-1012		Rib Neck Bolt 5/16-24 x .84" Lg.	65	732-0568		Flanged Bearing
16	17893	N	Belt Guard Brkt. Ass'y.	66	732-0384		Cotter Pin 3/32" Dia.*
17	736-0242		Bell-Wash. .345" I.D. x .88"	67	16554A		Shoulder Spacer .27" Lg.
18	712-0267		Hex Nut 5/16-18 Thd.*	68	741-0419		Speed Control Link
19	710-0190		Hex Bolt 5/16-18 x 4.0" *	69	714-0111		Truss Bearing .56 Dia. x 1.25"
20	714-0114		Sq. Key 1/4" x 1/4" x 2.00"	70	748-0234		Shift Knob
21	756-0488		Engine Pulley	71	747-0530		FI-Idler Pulley 3.25" x .75"
22	736-0322		FI-Wash. 7/16" I.D. x 1.25"	72	741-0405		"V"-Pulley (Used w/18" Wheels)†
23	736-0171		L-Wash. 7/16" I.D.*	73	720-0232		"V"-Pulley (Used w/20" Wheels)†
24	710-0757		Hex Bolt 7/16-20 x 1.50" Lg.	74	756-0437		"V"-Pulley (Used w/18" Wheels)††
25	754-0280		Variable-Speed Belt	75	756-0563		"V"-Pulley (Used w/20" Wheels)††
26	710-0118		Hex Bolt 5/16-18 x .75" Lg.				L-Wash. 1/2" I.D.*†
27	17963		Bearing Shaft Bracket Ass'y.		756-0557		Bell-Wash. .56" I.D. x 1.125"††
28	741-0295		Flanged Nyliner Brg. 5/8" I.D. x .88" Lg.		656-0005	N	Hex Jam Nut 1/2-20 Thd.*†
29	712-0241		Hex Nut 3/8-24 Thd.*		656-0004	N	Hex Jam Nut 9/16-18 Thd.††
30	17643		Idler Bracket (Used w/20" Wheels)				Hex Bolt 3/8-24 x 1.75" Lg.
	17694	N	Idler Bracket (Used w/18" Wheels)	76	736-0921		Variable Speed Belt
				77	736-0427		Snap Ring .56" Dia.
31	736-0169		L-Wash. 3/8" I.D.*	78	712-0922		FI-Wash.
32	712-0241		Hex Nut 3/8-24 Thd.*	79	712-3035		Variable Speed Pulley Ass'y. 5" O.D.
33	17629		Transaxle Support Brkt.	80	710-0539		Hex Bolt 1/4-20 x 3.25" Lg.
34	732-0556		Ext. Spring .94" O.D. x 7.58"	81	754-0370		Variable Speed Brkt. Ass'y.
35	714-0149B		Inter. Cott-Pin	82	716-0114		Comp. Spring—Clip
36	750-0802		Spacer .63" I.D.	83	736-0355		Axle Support Brkt.—R.H.
39	712-0138		Hex Nut 1/4-28 Thd.	84	717-0800		Axle Support Brkt.—L.H. (Not Shown)
13	710-0599		Hex Wash. Hd. S-Tap Scr. 1/4-20 x .50" Lg.	85	710-1136		Solenoid
14	17715A	N	Clutch/Brake Pedal Ass'y.	86	16354B		Shift Lever Bracket
15	736-0117		FI-Wash.	88	732-0525		Teflon Washer .565" I.D.
16	710-0351		Truss Mach. Scr. B-Tap Scr. #10 x .5" Lg.	89	17668		Safety Switch (Clutch)
17	17686		Brake Rod Ass'y.	90	17669		Shld. Bolt 3/8-24 x 3.12" Lg.
18	735-0196		Foot Pad	91	725-1426		
19	17705		Shift Lever Ass'y.	92	17630		
20	710-0559		Hex Bolt 1/4-28 x 1.75" Lg.*	93	736-0414		
21	732-0264		Ext. Spring .38" O.D. x 2.5"	94	725-3169A	N	
					738-0755		

PARTS LIST FOR FRONT ENGINE LAWN TRACTORS (CONTINUED)

REF. NO.	PART NO.	CODE	DESCRIPTION	REF. NO.	PART NO.	CODE	DESCRIPTION
96	748-0334		Transaxle Spacer (Used w/18" Wheels)	110	710-0376		Hex Bolt 5/16-18 x 1.0" Lg.— (Gr. 5)
97	736-0105		Bell-Wash. .38" I.D. x .88"	111	710-0195		Hex Bolt 1/4-28 x .50" Lg.
98	738-0569		Shaft .56" Dia. x 3.875" Lg.	112	736-0270		Bell-Wash. .265" I.D. x .75"
99	736-0331		Bell-Wash. .39" I.D. x 1.12"	113	17707		Shift Lever Link Ass'y.
100	736-0256		FI-Wash. .64" I.D. x .94"	114	—		Muffler (Refer to Style Sheet)
101	714-0470		Cotter Pin 1/8" Dia. x 1.25"	115	736-0140		FI-Wash. .385" I.D. x .62"
102	710-0604		Hex Wash. Hd. Scr. 5/16-18 x .62" Lg.	116	741-0404		Needle Brgs. (2 Req'd.)
103	734-1504		Hub Cap (Optional)	117	727-0425A	N	Spring Clip (Used w/Ref. #103)
107	17860	N	Pedal Bracket	118	736-0607		External L-Wash. 5/16" I.D.
108	714-0470		Cotter Pin 1/8" Dia. x 1.25"	119	710-0650		Hex Wash. TT-Tap Scr. 5/16-18 x .75"
109	711-0198		Ferrule	120	17840	N	Transaxle Mtg. Brkt.

†Used with 717-0542 Transaxle
 ††Used with 618-0002 Transaxle

Models 600 thru 669



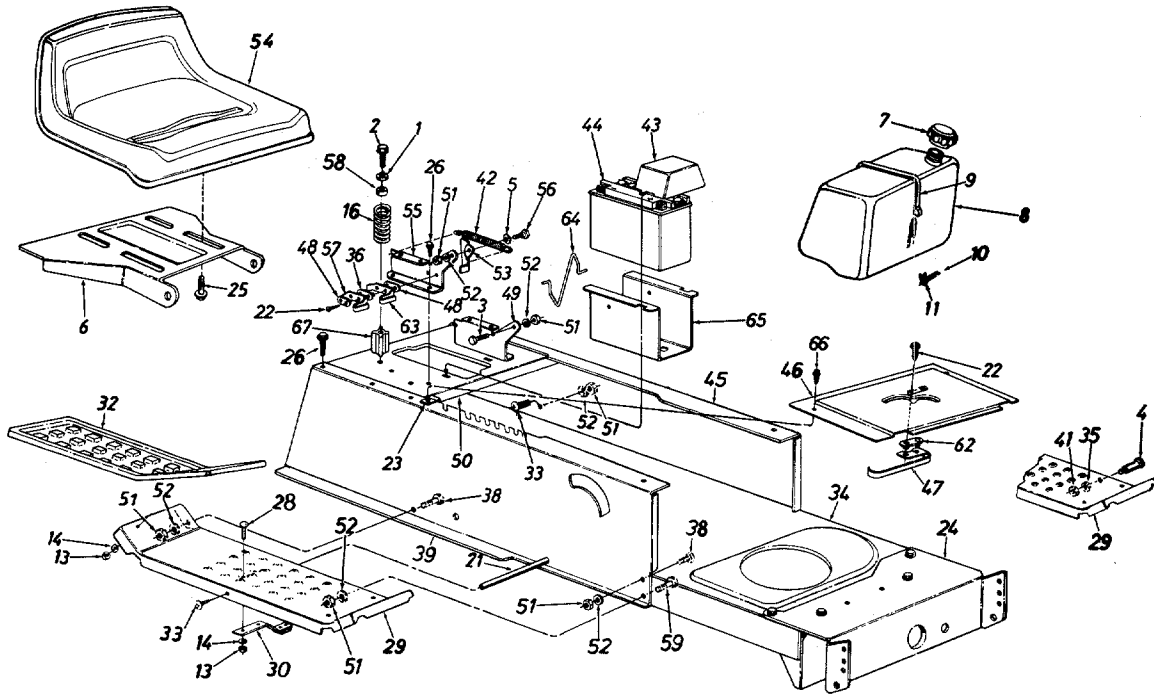
PARTS LIST FOR FRONT ENGINE LAWN TRACTORS

REF. NO.	PART NO.	CODE	DESCRIPTION
1	710-0924		Truss Mach. Scr. 1/4-20 x .75" Lg.
2	16195		5-Speed Selector Plate
	16236		6-Speed Selector Plate
	16194		7-Speed Selector Plate
3	720-0218		Shift Knob
4	16192		Speed Selector Cam Ass'y.
5	736-0192		Flat Washer .53" I.D. x .93"
6	711-0198		Ferrule 3/8-24 x .37" Dia.
7	738-0155		Shoulder Bolt
8	747-0503A	N	Speed Control Link
9	714-0111		Cotter Pin 3/32" Dia. x 1.0"*
10	736-0226		FI-Wash. .469" I.D. x .88"
11	736-0119		L-Wash. 5/16" I.D.*
12	712-0267		Hex Nut 5/16-18 Thd.*
14	732-0303		Spring .38" O.D. x 3.18" Lg.
17	736-0140		FI-Wash. .385" I.D. x .62"
19	736-0329		L-Wash. 1/4" I.D.*
20	712-0287		Hex Nut 1/4-20 Thd.*

PARTS LIST FOR FRONT ENGINE LAWN TRACTORS

REF. NO.	PART NO.	CODE	DESCRIPTION
1	732-0645	N	Compression Spring
2	712-0267		Hex Nut 5/16-18 Thd.*
3	736-0119		L-Wash. 5/16" I.D.*
4	17956	N	Shift Lever Support
5	711-0198		Ferrule 3/8-24 Thd.
6	747-0787	N	Speed Control Rod
7	750-0661		Spacer 1.15" Lg.
8	736-0253		Bell-Wash. .505" I.D. x 1" O.D.
9	736-0300		FI-Wash. .385" I.D. x .87" O.D.
10	17888	N	Speed Selector Lever
11	720-0232		Shift Knob
12	750-0702		Spacer 1.46" Lg.
13	736-0242		Bell-Wash. .345" I.D. x .88" O.D.
14	710-3056		Hex Bolt 5/16-18 x 3.25" Lg.
15	714-0111		Cotter Pin 3/32" Dia. x 1" Lg.

Models 600 thru 669

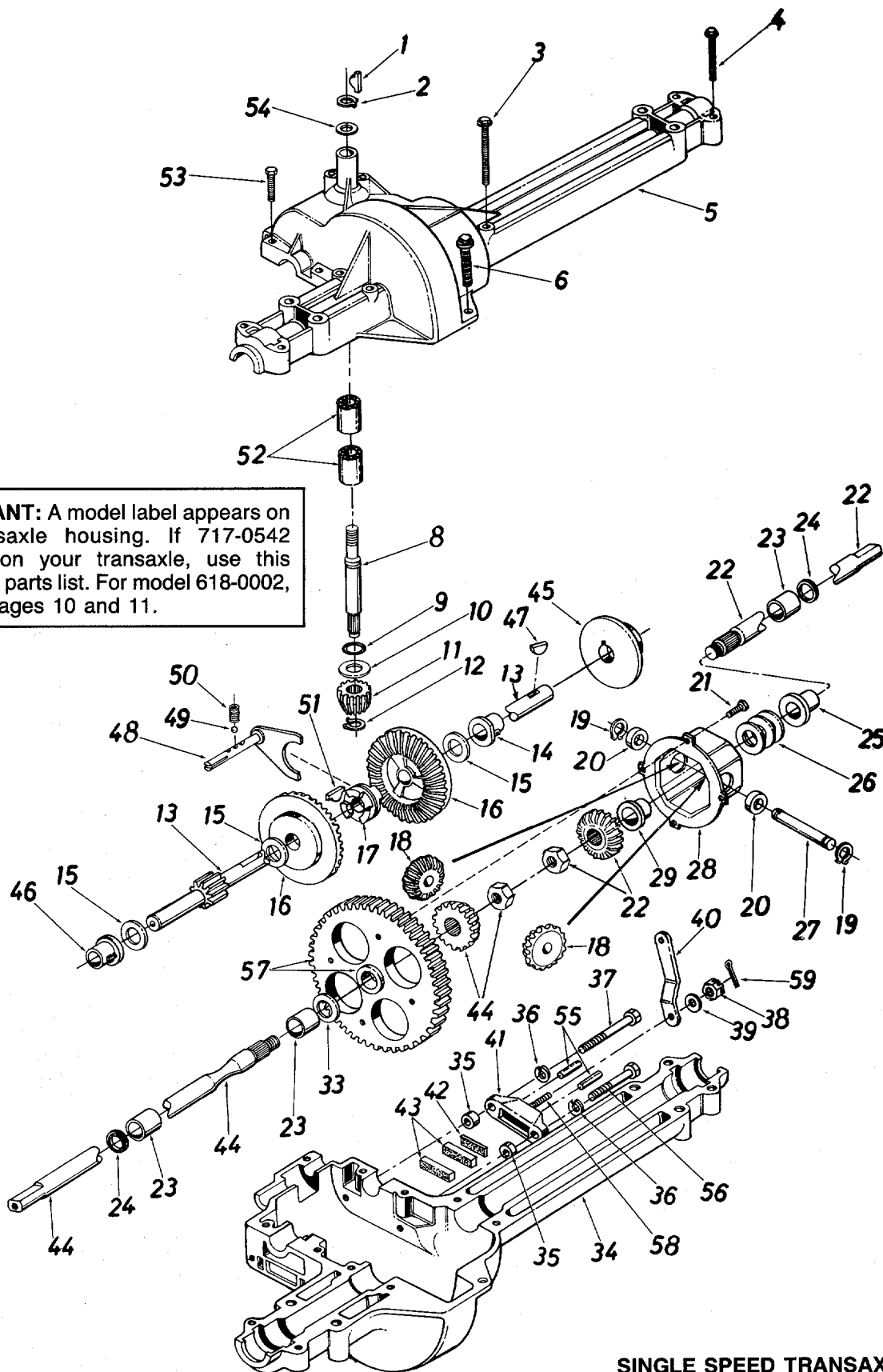


PARTS LIST FOR FRONT ENGINE LAWN TRACTORS

EF. O.	PART NO.	CODE	DESCRIPTION	REF. NO.	PART NO.	CODE	DESCRIPTION
1	736-0159		FI-Wash. .344" I.D. x .875"	36	726-0278	N	Insulator Boss Plate
2	710-1208	N	Hex Wash. Hd. Tap Scr. 5/16-18 x 3.25" Lg.	38	710-0118		Hex Bolt 5/16-18 x .75" Lg.*
3	738-0155		Shld. Bolt .437" Dia. x .162"	39	17622A	638/N	Upper Frame—R.H.
4	738-0145		Shld. Bolt .50" Dia. x .84"	41	712-0798		Hex Nut 3/8-16 Thd.*
5	736-0141		Spr-Wash. .445" I.D. x .75	42	732-0581		Extension Spring 5.31" Lg.
6	15607D		Seat Pivot Bracket	43	731-1200	N	Battery Cover
7	751-3071		Fuel Cap	44	725-0514A		12-V Battery
8	751-0553		Fuel Tank	45	17623	638	Upper Frame—L.H.
9	726-0209		Tie Strap	46	—		Shift Cover (Refer to Style Sheet)
10	751-0535-15		Fuel Line	47	725-0759		Reverse Safety Switch
11	726-0205		Hose Clamp	48	726-0279	N	Insulator Plate
13	712-0287		Hex Nut 1/4-20 Thd.*	49	17951	N	Seat Pivot Brkt. Support—L.H.
14	736-0329		L-Wash. 1/4" I.D.	50	17953	N	Hitch Plate
16	732-0672	N	Compression Spring	51	712-0267		Hex Nut 5/16-18 Thd.*
21	738-0526		Running Board Rod	52	736-0119		L-Wash. 5/16" I.D.*
22	710-0227		Hex Wash. Hd. AB-Tap Scr. #8 x .50" Lg.	53	17239A		Seat Lift Brkt.
23	726-0139		Speed Nut #10Z	54	757-0345		Seat 8-7/8" High
24	17621		Front Pivot Brkt.		757-0338		Seat 10-5/8" High
25	710-0623		Hex Tap Scr. 3/8-16 x .75"		757-0350		Seat 14 1/4" High
26	710-0726		Hex Wash. Hd. AB-Tap Scr. 5/16 x .75" Lg.	55	17950	N	Seat Pivot Brkt. Support—R.H.
28	710-0134		Carriage Bolt 1/4-20 x .62"*	56	738-0296		Shld. Bolt .437" Dia. x .268"
29	17770		Running Board (R.H. & L.H.)	57	725-1303		Spring Switch
30	—		Blade Brake Ass'y. (Refer to Deck Breakdown)	58	722-0160		Bushing
32	731-0909		Rubber Foot Pad—L.H.**	59	710-0650		Hex Wash. TT-Tap Scr. 5/16-18 x 7/8" Lg.
33	731-0910		Rubber Foot Pad—R.H.**	62	726-0222		Insulator Nut Plate
34	710-0323		Truss Mach. Scr. 5/16-18 x .75" Lg.*	63	725-1439		Safety Switch (Seat)
35	17620B	N	Lower Frame	64	732-0674	N	Battery Tray Clip
36	736-0169		L-Wash. 3/8" I.D.*	65	17952	N	Battery Tray
				66	710-0351		Truss Mach. B-Tap Scr. #10 x .5" Lg.
				67	748-0347	N	Spring Spacer

*Optional Parts

Models 600 thru 669



IMPORTANT: A model label appears on the transaxle housing. If 717-0542 appears on your transaxle, use this illustrated parts list. For model 618-0002, refer to pages 10 and 11.

**SINGLE SPEED TRANSAXLE—R.H.
MODEL 717-0542**

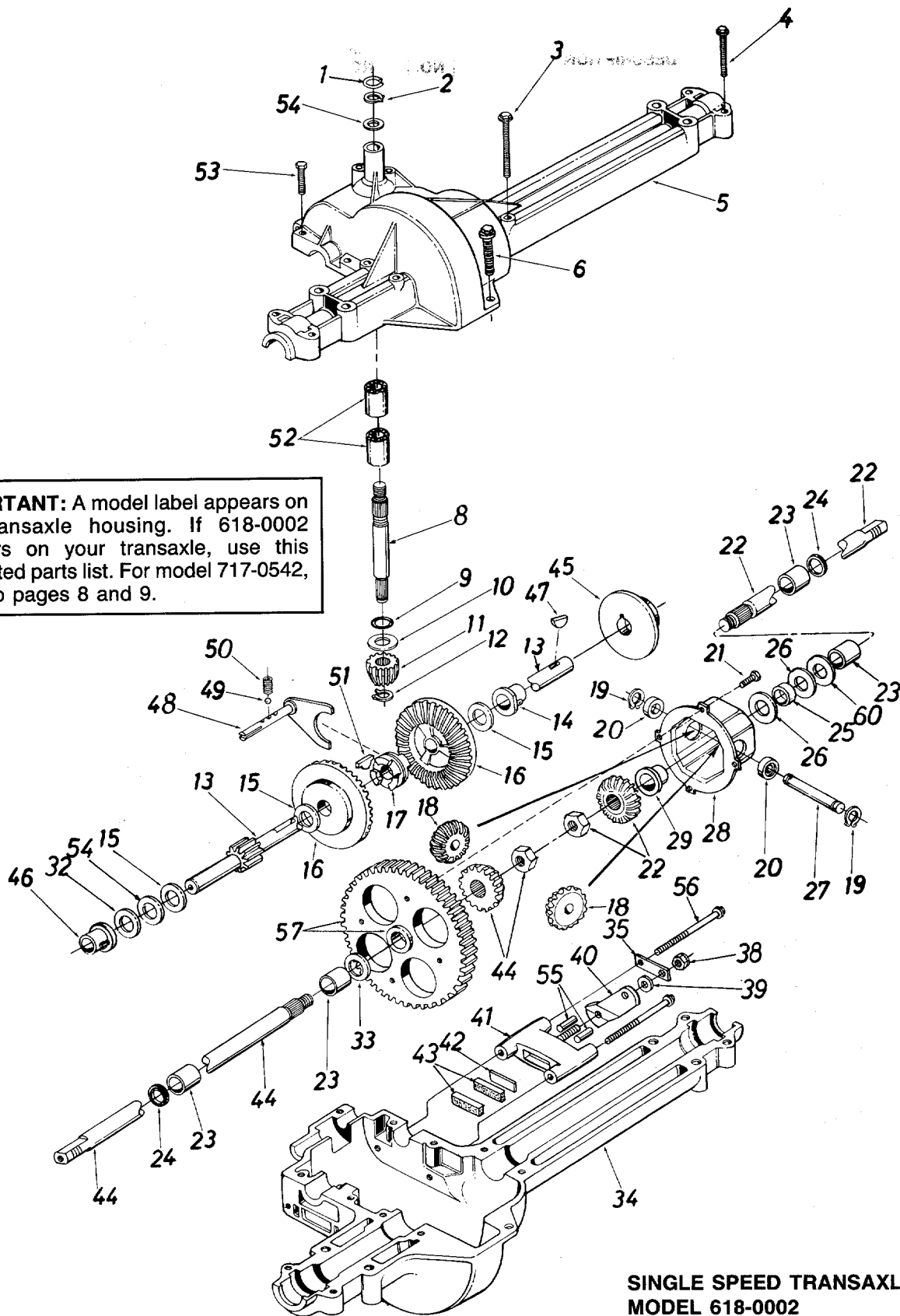
Models 600 thru 669

PARTS LIST FOR SINGLE SPEED TRANSAXLE RIGHT HAND 717-0542

QTY.	PART NO.	CODE	DESCRIPTION	REF. NO.	PART NO.	CODE	DESCRIPTION
1	714-0129		#4 Hi-Pro Key 3/32 x 5/8" Dia.	33	736-0351		FI-Wash. .75" I.D. x 1.5" O.D.
2	716-0115		Snap Ring .625" Shaft	34	717-0541	N	Lower Housing
3	710-0854		Hex Bolt 1/4-20 x 1.75" Lg.*	35	750-0555		Spacer .53" O.D. x 3/8" Lg.
4	710-0809		Hex Bolt 1/4-20 x 1.25" Lg.*	36	736-0329		L-Wash. 1/4" I.D.*
5	717-0764A		Upper Housing	37	710-0886		Hex Bolt 1/4-20 x 1.50" Lg. (Grade 5)
6	710-0642		Hex FI-Bolt 1/4-20 x .75" Lg.				Castle Nut 5/16-24 Thd.*
7	712-0287		Hex Nut 1/4-20 Thd.*	38	712-0335		FI-Wash. .34" I.D. x .875" O.D.
8	717-0634A	N	Input Shaft	39	736-0371		Actuating Arm—R.H.
9	721-0178		Square Seal 5/8" I.D.				Brake Yoke
0	736-0335		Thrust Washer 5/8" I.D. x 1.25" O.D.	40	717-0700		Brake Yoke
				41	717-0679		Puck Plate
1	717-0633		Pinion Input 14T	42	717-0682		Brake Puck
2	716-0108		Retaining Ring 7/16" Ext.	43	717-0678	N	Axle L.H. Ass'y.
3	717-0758		Drive Shaft—R.H.	44	717-0538		Brake Disc
4	741-0336		Flange Brg. 5/8" I.D. x 3/4" Lg.*	45	717-0677		Flange Bearing 5/8" I.D. x 15/16" Lg.
				46	741-0337		Woodruff Key 3/16 x 5/8 HT
5	**		FI-Wash. (See Below)				Shift Fork Ass'y.
6	717-0757		Bevel Gear 42T	47	714-0161		Ball Detent .250" Dia.
7	717-0667		Clutch Collar	48	717-0754		Spring Detent
8	717-1020		Miter Gear 15T	49	741-0862		#9 Hi-Pro Key 3/16" x 3/4" Dia. HT
9	716-0184		Retainer Ring	50	732-0863		Needle Brg. 5/8" I.D. x 1/2" Lg.
0	717-0690		Thrust Bearing 1/2" I.D. x 1.0" O.D.	51	714-0169		Hex Bolt 1/4-20 x 1.00" Lg.
1	710-0862A		Pan Head Scr. 1/4-20 x .50" Lg. w/Patch	52	741-0335		FI-Wash. 5/8" I.D. x .030
2	717-0539	N	Axle R.H. Ass'y.	53	710-0855		Actuating Pin 5/16" Dia.
3	741-0340		Sleeve Bearing 3/4" I.D. x 1.0" Lg.	54	736-0336		Hex Bolt 1/4-20 x 1.50" Lg. (Grade 5)
4	721-0179		Oil Seal 3/4" I.D.	55	741-0343		Differential Gear 72T Ass'y. w/Bearing
5	741-0339		Flange Bearing 3/4" I.D. x 15/16" Lg.	56	710-0886		Sq. Hd. Bolt 5/16-24 Thd.
6	736-0188		FI-Wash. .760" I.D. x 1.49" O.D.	57	717-0767		Cotter Pin 3/32" Dia. x 1.0" Lg.
7	711-0918		Cross Shaft	58	717-0796		Grease—Shell (10 oz.)
3	717-0777		Differential Housing Ass'y.	59	714-0111		
3	—		Comes with Ref. 28	—	737-0148		

Ref. No. 15 736-0349 FI-Wash. 5/8" I.D. x 1.0" O.D. x .020 Thk.
 736-0336 FI-Wash. 5/8" I.D. x 1.0" O.D. x .030 Thk.
 736-0337 FI-Wash. 5/8" I.D. x 1.0" O.D. x .040 Thk.

Models 600 thru 669



IMPORTANT: A model label appears on the transaxle housing. If 618-0002 appears on your transaxle, use this illustrated parts list. For model 717-0542, refer to pages 8 and 9.

**SINGLE SPEED TRANSAXLE—R.H.
MODEL 618-0002**

Models 600 thru 669

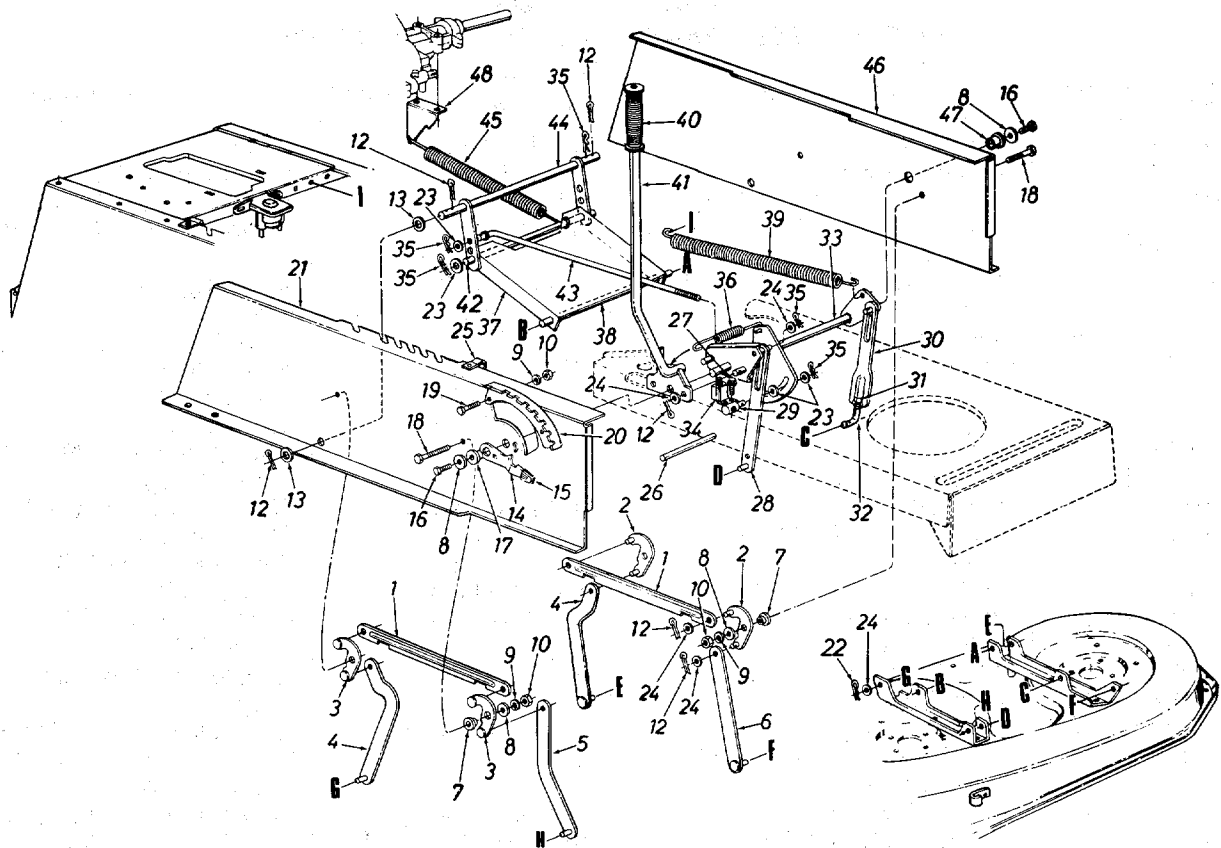
PARTS LIST FOR SINGLE SPEED TRANSAXLE RIGHT HAND 618-0002

QTY.	PART NO.	CODE	DESCRIPTION	REF. NO.	PART NO.	CODE	DESCRIPTION
1	732-0614		Wire Ring	34	719-0303	N	Lower Housing
2	716-0108		Retaining—Ring	35	718-0150	N	Anti-Rotation Brkt.
3	710-0854		Hex Bolt 1/4-20 x 1.75" Lg.*	38	712-0273		Hex Nut 5/16-24 Thd.
4	710-0809		Hex Tap Scr. 1/4-20 x 1.25" Lg.	39	736-0371		FI-Wash. .344" I.D. x .875" O.D.
5	717-0764A		Upper Housing	40	717-0700		Actuating Arm
6	710-0642		Hex TT-Tap Scr. 1/4-20 x .75" Lg.	41	761-0198	N	Brake Yoke
8	711-0861	N	Input Shaft	42	717-0682		Puck Plate
9	721-0178		Square Seal 5/8" I.D.	43	717-0678		Brake Puck
10	736-0335		Thrust Washer 5/8" I.D. x 1.25" O.D.	44	717-0538	N	Axle L.H. Ass'y.
11	717-0633		Pinion Input 14T	45	717-0677		Brake Disc
12	716-0171		Retaining Ring	46	741-0337		Flange Bearing 5/8" I.D. x 15/16" Lg.
13	717-0768		Drive Shaft	47	714-0161		Woodruff Key 3/16 x 5/8 HT
14	741-0336		Flange Brg. 5/8" I.D. x 3/4" Lg.*	48	717-0754		Shift Fork Ass'y.
15	736-0335		FI-Wash. 5/8" I.D. x 1.25"	49	741-0862		Ball Detent .250" Dia.
16	717-0757		Bevel Gear 42T	50	732-0863		Spring Detent
17	717-0667		Clutch Collar	51	714-0169		#9 Hi-Pro Key 3/16" x 3/4" Dia. HT
18	717-1020		Miter Gear 15T (H.D.)	52	741-0335		Needle Brg. 5/8" I.D. x 1/2" Lg.
19	716-0184	N	Snap Ring	53	710-0855		Hex Bolt 1/4-20 x 1.00" Lg.
20	741-0589	N	Thrust Bearing	54	736-0349		FI-Wash. 5/8" I.D. x 1" O.D. x .020 Thk.
21	710-0862A	N	Pan Head Scr. 1/4-20 x .50" Lg. w/Patch	55	741-0343		Actuating Pin 5/16" Dia.
22	717-0539	N	Axle R.H. Ass'y.	56	710-1206	N	Hex Wash Hd. Self-Tap Scr. 1/4-20 Thd.
23	741-0340		Sleeve Bearing 3/4" I.D. x 1.0" Lg.	57	717-0767		Differential Gear 72T Ass'y. w/Bearing
24	721-0179		Oil Seal 3/4" I.D.	58	736-0349		FI-Wash. 5/8" I.D. x 1" O.D. x .020 Thk.
25	750-0827		Axle Spacer		736-0495		Thrust Wash. 5/8" I.D. x 1" O.D. x .025" Thk.
26	736-0445		FI-Wash. .760" I.D. x 1.5" O.D.	60	**		Washer (See Below)
27	711-0918	N	Cross Shaft		737-0148		Grease—Shell (10 oz.)
28	717-1252	N	Differential Cam Ass'y.				
29	—		Part of Ref. 28				
32	**		Washer (See Below)				
33	736-0445		FI-Wash. .760" I.D. x 1.5" O.D.				

Ref. No. 32 736-0495 Thrust Wash. 5/8" I.D. x 1" O.D. x .025" Thk.
 736-0336 FI-Wash. 5/8" I.D. x 1" O.D. x .030" Thk.
 736-0494 Thrust Wash. 5/8" I.D. x 1" O.D. x .035" Thk.
 736-0337 FI-Wash. 5/8" I.D. x 1" O.D. x .040" Thk.

Ref. No. 60 736-0492 FI-Wash. .76" I.D. x 1.5" O.D. x .010" Thk.
 736-0493 FI-Wash. .76" I.D. x 1.5" O.D. x .020" Thk.
 736-0351 FI-Wash. .76" I.D. x 1.5" O.D. x .030" Thk.
 736-0445 FI-Wash. .76" I.D. x 1.5" O.D. x .060" Thk.

Models 600 thru 669



PARTS LIST FOR FRONT ENGINE LAWN TRACTORS

REF. NO.	PART NO.	CODE	DESCRIPTION	REF. NO.	PART NO.	CODE	DESCRIPTION
1	09735A		Connecting Rod	24	736-0160		FI-Wash. .531" I.D. x .93" O.D.
2	17640		Pivot Link Ass'y.—L.H.	25	726-0272		Clamp
3	17641		Pivot Link Ass'y.—R.H.	26	738-0526		Running Board Rod
4	17710		Deck Hanger Link Ass'y.	27	710-3007	N	Hex Wash. Hd. Tap Scr.
5	14800A	N	Deck Hanger Link Ass'y.	28	14802A		Link Deck Lift Ass'y.
6	14804A	N	Deck Hanger Link Ass'y.	29	711-0723A		Adj. Ferrule 3/8-24 Thd.
7	748-0331		Shld. Spacer .318" I.D.	30	17712		Adj. Deck Lift Link
8	736-0231		FI-Wash. .344" I.D. x 1.125"	31	712-3066		Hex Nut 1/2-20 Thd. (Gr. 5)
9	736-0119		L-Wash. 5/16" I.D.*	32	711-0841		Lift Link Adjuster
10	712-0267		Hex Nut 5/16-18 Thd.*	33	17637		Lift Shaft Ass'y.
11	736-0160		FI-Wash. .531" I.D. x .93" O.D.	34	725-0803C	N	Safety Switch (Deck)
12	714-0470		Cotter Pin 1/8" Dia.	35	714-0145		Inter. Cotter Pin 3/8" Dia.
13	736-0256		FI-Wash. .635" I.D. x 1.0" O.D.	36	732-0637		Extension Spring
14	732-0412A		Deck Lift—Down Stop (Incl. Ref. 15)	37	17636A	N	Stabilizer Bracket
15	08540		Knob	38	738-0670		Shaft 1/2" Dia. x 10.28" Lg.
16	710-0604		Hex Wash. TT-Tap Scr. 5/16-18 x .75" Lg.	39	732-0638		Extension Spring
17	748-0176		Flange Brg. .63" I.D.	40	720-0233		Grip (Lift Handle)
18	710-0650		Hex Wash. TT-Tap Scr. 5/16-18 x .875" Lg.	41	17675		Deck Lift Handle Ass'y.
19	710-0118		Hex Bolt 5/16-18 x .75" Lg.	42	738-0669		Shaft 3/8" Dia. x 9.34" Lg.
20	17730		Index Brkt.	43	747-0598		Disengagement Rod
21	17622A	N	Upper Frame—R.H.	44	17624		Stabilizer Shaft Ass'y.
23	736-0267		FI-Wash. .385" I.D. x .87" O.D.	45	732-0556		Extension Spring 7.58" Lg.
				46	17623		Upper Frame—L.H.
				47	741-0313		Flange Brg. .632" I.D.
				48	17128		Spring Retainer Brkt.

REPLACEMENT PARTS • P.O. BOX 360900 • CLEVELAND, OHIO 44136