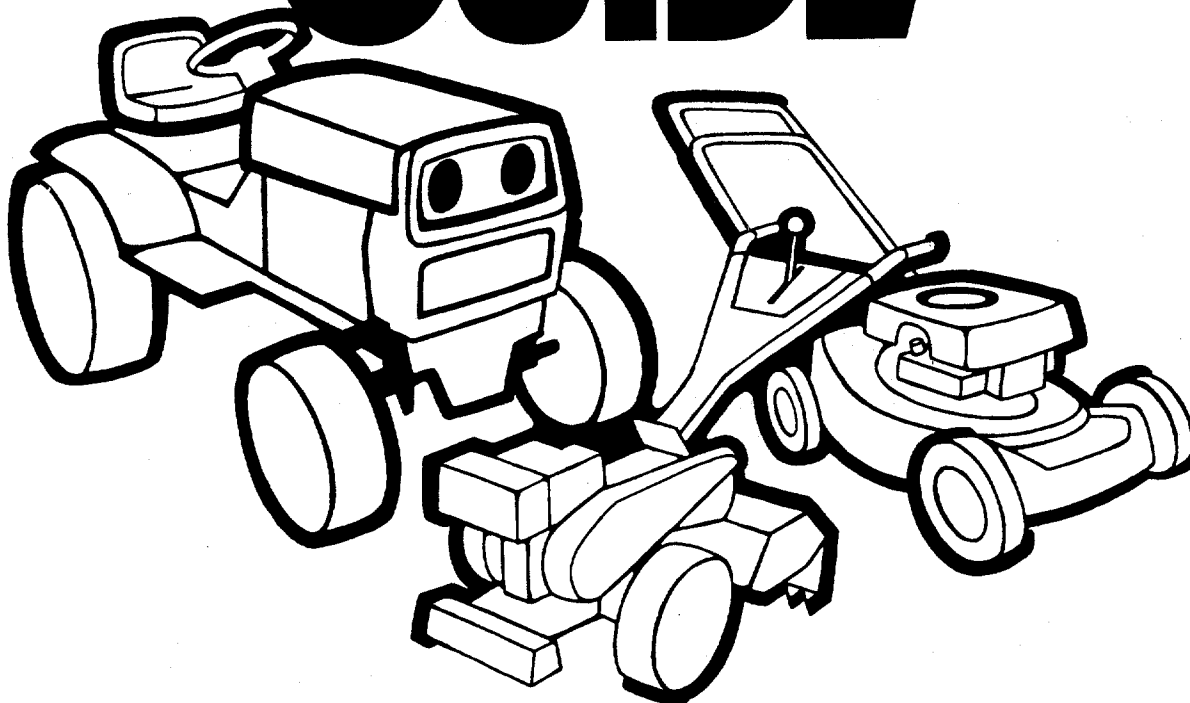


\$1.00

OWNER'S GUIDE



**36" REAR
DISCHARGE
MOWING
DECK**

**Model Number
190-802-000
for
Model 500 and 600
Series Front Engine
Lawn Tractors
190-058-000**

**IMPORTANT: Read Safety Rules and Instructions in
Lawn Tractor Owner's Guide Carefully.**

REFER TO THE LAWN TRACTOR OWNER'S MANUAL FOR SAFE OPERATION PRACTICES, AND CORRECT OPERATION AND MAINTENANCE INSTRUCTIONS. READ INSTRUCTIONS CAREFULLY.

ATTACHING THE CHUTE DEFLECTOR

A deflector has been provided with the deck. To mow without bagging the grass, proceed as follows.

1. Attach the chute deflector to the deck using the large hairpin cotter provided. See figure 1.

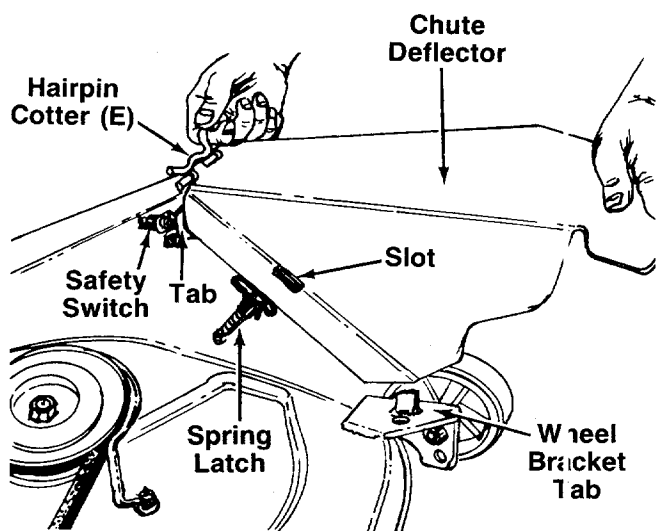


FIGURE 1.

2. Position the chute deflector so that the lower end rests inside the tab on the wheel bracket and the tab on the upper end rests against the safety switch. See figure 1.

NOTE

The tab on the deflector must activate the safety switch on the deck or the engine will shut off when the blade is engaged.

3. Secure the spring latch on the deck to the slot in the deflector. See figure 1.

DECK WHEEL HEIGHT ADJUSTMENT

Adjustments may be made by removing and replacing the hex nut, lock washer and shoulder bolt that secures the wheel to the deck to one of four height adjustment positions. See figure 2. The deck wheels should be placed in the same relative position.

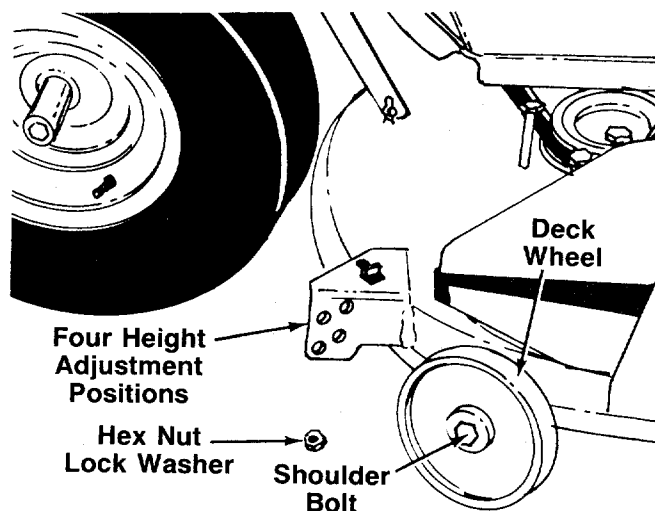


FIGURE 2.

DECK BELT REMOVAL AND REPLACEMENT

1. Place the lift lever in the disengaged position.
2. Remove the three hex bolts (belt keepers) from the engine pulley belt guard. See figure 3.

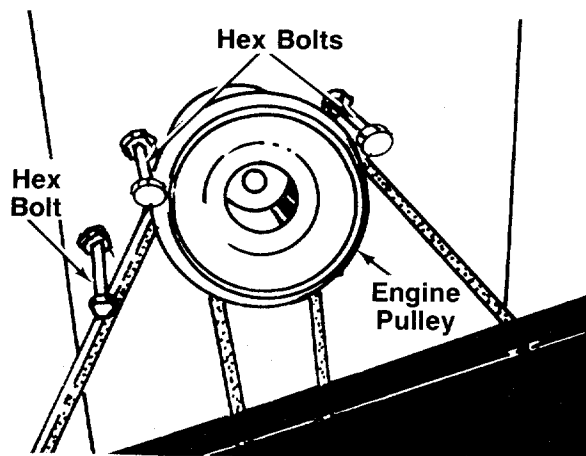


FIGURE 3.

3. Unhook the deck belt from the engine pulley.
4. Place the lift lever in the engaged (all the way forward) position.
5. Disconnect the six deck links by removing the hairpin cotter and flat washers. Refer to illustration on page 6.

NOTE

Figure 3 is shown with the unit tipped up for clarity. It is not necessary to tip the unit to remove the belts.

6. Unplug the yellow wire from the chute safety switch. See figure 4.

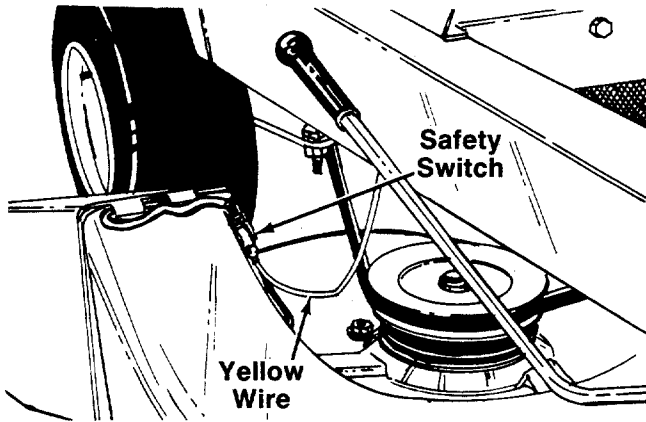


FIGURE 4.

7. Slide the deck from beneath the lawn tractor.
8. Remove the belt guards at each deck pulley by removing the hex bolts, lock washers and hex nuts. See figure 5.

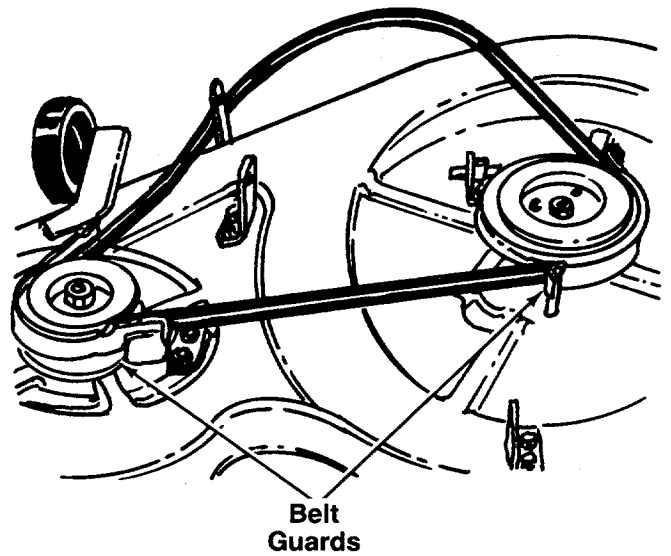
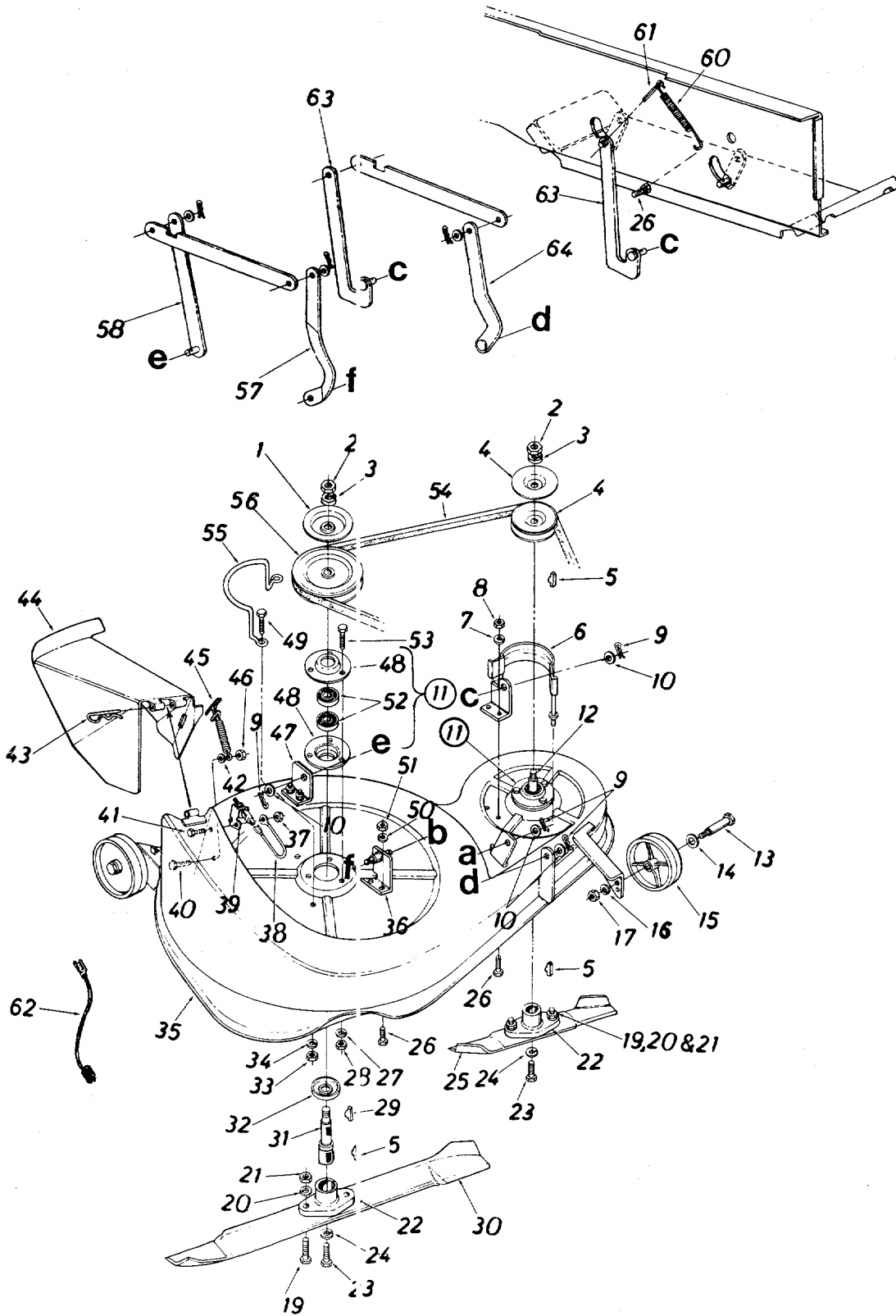


FIGURE 5.

9. Remove and replace the belt, following the instructions in reverse order.

Model 802 Deck

36" Rear Discharge Mowing Deck Model 500 and 600 Series Front Engine Lawn Tractors



Model 802 Deck

PARTS LIST FOR 36" REAR DISCHARGE MOWING DECK

REF. NO.	PART NO.	COLOR CODE	DESCRIPTION	NEW PART	REF. NO.	PART NO.	COLOR CODE	DESCRIPTION	NEW PART
1	09322		Brake Disc		36	15961		Deck Hanger Brkt.—R.H. Front	
2	712-0318		Hex Jam Nut 5/16-18 Thd.*					Hex Nut 1/4-20 Thd.*	
3	736-0317		Bell-Wash. .630" I.D. x 1.25" O.D.		37	712-0287		Ground Wire	
4	756-0413		Pulley Ass'y. 3.5" O.D. x 5/8		38	725-0765		Safety Switch	
5	714-0365		# Hi-Pro Key 5/32" x 5/8" Dia.		39	725-1001		Truss Mach. Scr. 1/4-20 x .50" Lg.*	
6	15967		Belt Guard Ass'y.—L.H.		40	710-0286		Hex Bolt 1/4-20 x .50" Lg.*	
7	736-0119		L-Wash. 5/16" I.D.*		41	710-0289		Fl-Wash. .281" I.D. x .50" O.D.	
8	712-0267		Hex Nut 5/16-18 Thd.*		42	736-0142		Internal Cotter Pin	
9	714-0101		Internal Cotter Pin 1/2" Dia.		43	714-0155		Chute Deflector Ass'y.	
10	736-0192		Fl-Wash. .531" I.D. x .93" O.D.		44	15990		Spring Latch Ass'y.	
11	717-0808		Blade Spindle Ass'y.		45	723-0296		Hex Nut 1/4-20 Thd.*	
12	738-0559		Blade Spindle		46	712-0287		Deck Hanger Brkt.—R.H. Rear	
13	738-0414		Shld. Bolt .498" Dia. x 1.635		47	15966		Brg. Housing 1.85" I.D.	
14	736-0105		Bell-Wash. .400" I.D. x .88" O.D.		48	08253		Hex Bolt 5/16-18 x .75" Lg.*	
15	734-0973		Deck Wheel 5.0" x 1.38"		49	710-0118		L-Wash. 5/16" I.D.*	
16	736-0119		L-Wash. 5/16" I.D.*		50	736-0119		Hex Nut 5/16-18 Thd.*	
17	712-0798		Hex Nut 3/8-16 Thd.*		51	712-0267		Ball Brg. .787" I.D. x 1.85" O.D.	
18	736-0169		L-Wash. 3/8" I.D.*		52	741-0919		Hex Bolt 5/16-18 x .75" Lg.*	
19	710-0117		Hex Bolt 5/16-24 x 1.00" Lg. (Grade 5)		53	710-0118		"V"-Belt	
20	736-0119		L-Wash. 5/16" I.D.*		54	754-0277		Belt Guard	
21	712-0123		Hex Nut 5/16-24 Thd.*		55	747-0466		Pulley 6.0" O.D. x 5/8"	
22	748-0189		Blade Adapter		56	756-0414		Link Deck Hanger—Front—R.H.†	
23	710-0459		Hex Bolt 3/8-24 x 1.50" Lg. (Grade 5)		57	15958		Link Deck Hanger Ass'y.—Rear R.H.†	
24	736-0217		L-Wash. 3/8" I.D. H.D.		58	14804		Ext. Spring†	
25	742-0206		13" Blade		60	732-0157		Cotter Pin 1/8" Dia. x 1.25" Lg.†	
26	710-0118		Hex Bolt 5/16-18 x .75" Lg.*		61	714-0470		Wire Lead	
27	736-0119		L-Wash. 5/16" I.D.*		62	725-1000		Link Deck Hanger Ass'y.—Rear L.H.†	
28	712-0267		Hex Nut 5/16-18 Thd.*		63	15959		Link Deck Hanger Ass'y.—Front L.H.†	
29	714-0365		#6 Hi-Pro Key 5/32" x 5/8" Dia.		64	15998		36" Deck Ass'y.—Comp. (Service Only)	
30	742-0267		24" Blade		—	15950		Blade Brake Ass'y.	
31	738-0559		Blade Spindle		—	761-0169			
32	13703		Bearing Shield						
33	712-0267		Hex Nut 5/16-18 Thd.*						
34	736-0119		L-Wash. 5/16" I.D.*						
35	15951		36" Deck Ass'y.						

†Not part of deck assembly complete.

*For faster service obtain standard nuts, bolts and washers locally. If these items cannot be obtained locally, order by part number and size as shown on parts list.



NOTE

Specifications subject to change without notice or obligation.

Model 802 Deck

36" Rear Discharge Mowing Deck
Model 500 and 600 Series Front Engine Lawn Tractors

