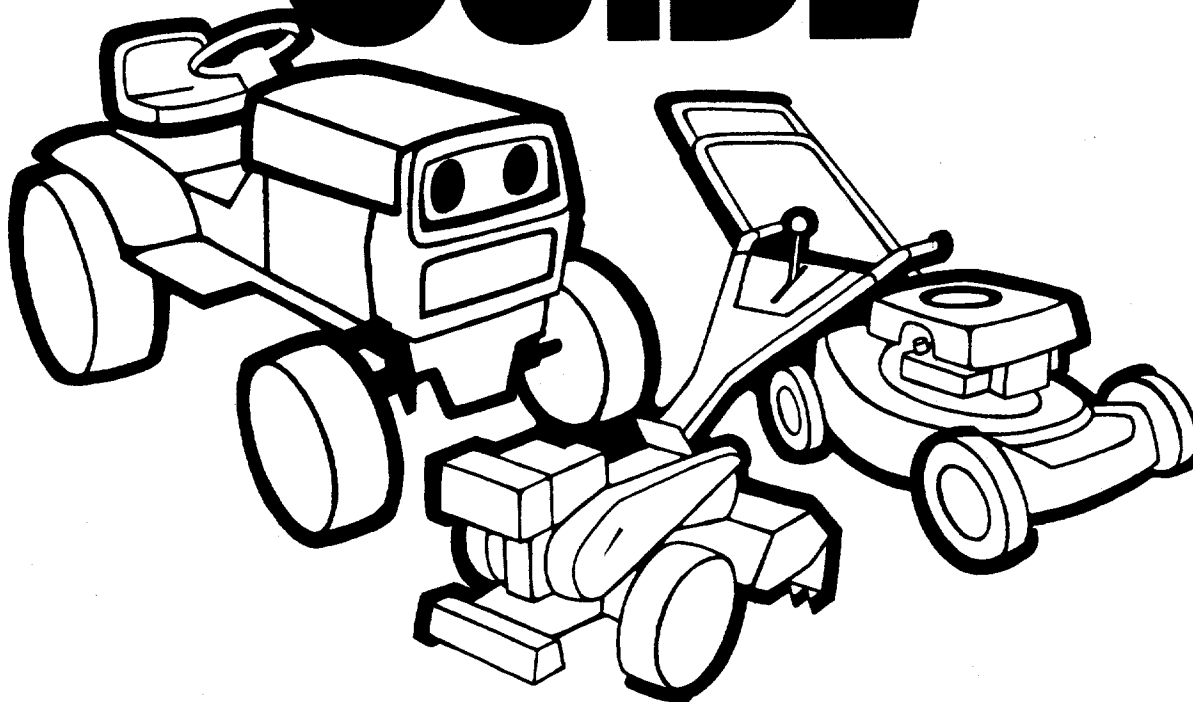


\$1.00

# OWNER'S GUIDE



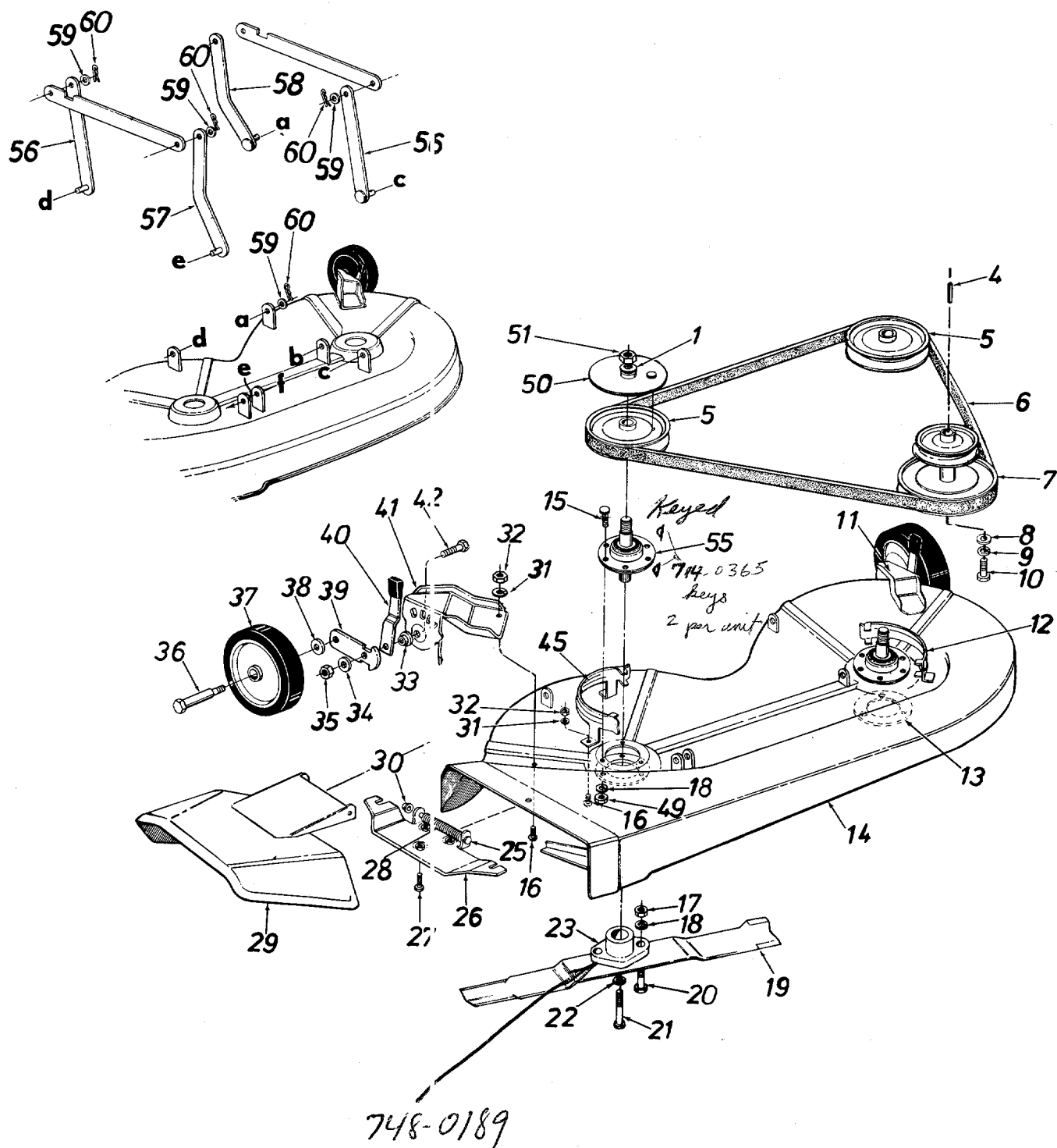
**34" AND 38"  
SIDE  
DISCHARGE  
MOWING  
DECKS**

**Model Numbers  
190-800-000  
190-801-000  
for  
Model 500 and 600  
Series Front Engine  
Lawn Tractors**

**IMPORTANT: Read Safety Rules and Instructions In  
Lawn Tractor Owner's Guide Carefully.**

# Models 800 and 801 Decks

34" and 38" Side Discharge Mowing Deck  
Model 500 and 600 Series Front Engine Lawn Tractors



# Models 800 and 801 Decks

## PARTS LIST FOR 34" AND 38" MOWING DECKS

REF. NO.	PART NO.	COLOR CODE	DESCRIPTION	NEW PART	REF. NO.	PART NO.	COLOR CODE	DESCRIPTION	NEW PART
1	736-0158		L-Wash. 5/8" I.D.		27	710-0599		Hex Wash. Self-Tap Scr.	
4	714-0114		Sq. Key 1/4" x 1/4" x 2.0" Lg.†		28	732-0261		1/4-20 x .50" Lg.	
5	756-0251		Pulley 4.75" O.D.		29	11633		Torsion Spring	
6	754-0151		"V"-Belt (34" Deck)		30	726-0106		Chute Cover Ass'y.—Comp.	
	754-0145		"V"-Belt (38" Deck)		31	736-0329		Push Nut 1/4" Rod	
7	—		See Lawn Tractor Manual†		32	712-0138		L-Wash. 1/4" I.D.*	
8	736-0322		Fl-Wash. 7/16" I.D. x 1.25 O.D. x .180†		33	748-0279		Hex Nut 1/4-28 Thd.	
9	736-0171		L-Wash. 7/16" I.D.*†		34	736-0219		Shld. Spacer	
10	710-0757		Hex Bolt 7/16-20 x 1.50" Lg.*†		35	712-0181		Bell-Wash. .400" I.D. x 1.13"	
11	09082		Wheel Brkt.—L.H.		36	738-0373		Hex Top L-Nut 3/8-16 Thd.	
12	16607		Belt Guard—L.H.		37	734-0973		Shld. Bolt .498" Dia. x 1.53"	
13	09164		Plate Deck Reinforcement		38	736-0105		Plastic Wheel 5.0" x 1.38"	
14	16459		34" Deck Ass'y.		39	10937		Bell-Wash. .400" I.D. x .88"	
	16458		34" Deck Ass'y. Comp. (Service Only)		40	14082		Pivot Bar	
	14662		38" Deck Ass'y.		41	09080		Spring Lever Ass'y. w/Knob	
	14777		38" Deck Ass'y. Comp. (Service Only)		42	710-0253		Wheel Brkt.—R.H.	
15	710-1012		Rib Neck Bolt 5/16-24 x .67" Lg.	N	45	16608		Hex Bolt 3/8-16 x 1.00" Lg.*	
16	710-0195		Hex Bolt 1/4-28 x .50" Lg.		49	712-0123		Belt Guard—R.H.	
17	712-0123		Hex Nut 5/16-24 Thd.*		50	09322		Hex Nut 5/16-24 Thd.*	
18	736-0119		L-Wash. 5/16" I.D.*		51	712-0261		Brake Disc	
19	742-0120		17" Blade (34" Deck)		55	717-0901		Hex Jam L-Nut 5/8-11 Thd.	
	742-0122		19" Blade (38" Deck)					Blade Spindle Ass'y. Comp. (34" Deck) (Incl. Ref. 15)	N
20	710-0888		Hex Bolt 5/16-24 x 1.00" Lg. (Grade 5)		56	14804		Blade Spindle Ass'y. Comp. (38" Deck) (Incl. Ref. 15)	N
21	710-0459		Hex Bolt 3/8-24 x 1.50" Lg. (Grade 5)		57	14800		Link Deck Hanger Ass'y.†	
22	736-0217		L-Wash. 3/8" I.D. (Heavy Duty)		58	15925		Link Deck Hanger Ass'y. (Dog Leg)†	
23	10769		Blade Adapter Kit		59	736-0160		Link Deck Hanger Ass'y.—L.H.†	
25	711-0571		Hinge Pin		60	714-0101		Fl-Wash. .53" I.D. x .93" O.D.†	
26	11396		Adapter Plate		—	761-0168		Inter. Cotter Pin .50" Dia.†	
					—	761-0169		Blade Brake Assembly (34" Deck)†	
								Blade Brake Assembly (38" Deck)†	

†Not part of deck assembly complete.

\*For faster service obtain standard nuts, bolts and washers locally. If these items cannot be obtained locally, order by part number and size as shown on parts list.



Specifications subject to change without notice or obligation.

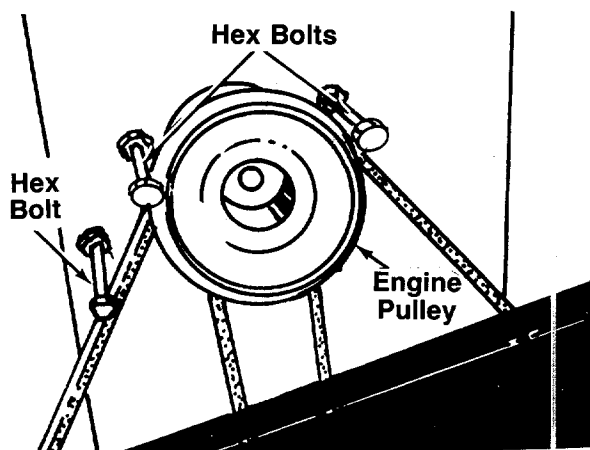
**REFER TO THE LAWN TRACTOR OWNER'S MANUAL FOR SAFE OPERATION PRACTICES, AND CORRECT OPERATION AND MAINTENANCE INSTRUCTIONS. READ INSTRUCTIONS CAREFULLY.**

### **DECK BELT REMOVAL AND REPLACEMENT**

1. Place the lift lever in the disengaged position.
2. Remove the three hex bolts (belt keepers) from the engine pulley belt guard. See figure 1.

#### **NOTE**

When reassembling, make certain hex bolts are assembled as shown in figure 1.

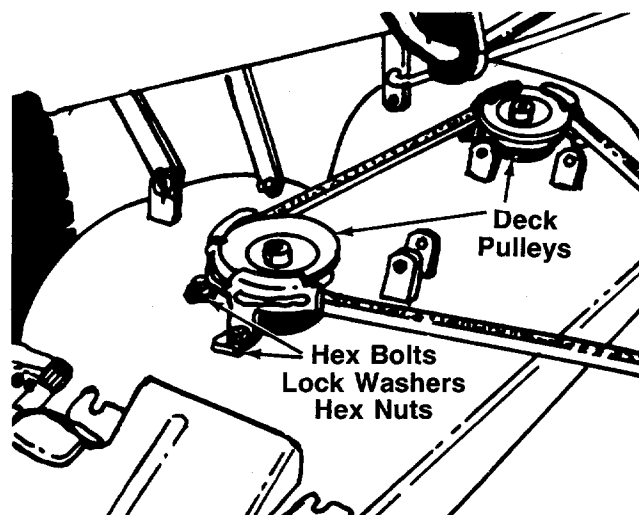


**FIGURE 1.**

#### **NOTE**

Figure 1 is shown with the unit tipped up for clarity. It is not necessary to tip the unit to remove the belts.

3. Unhook the deck belt from the engine pulley.
4. Place the lift lever in the engaged (all the way forward) position.
5. Disconnect the six deck links by removing the hair-pin cotters and flat washers.
6. Slide the deck from beneath the lawn tractor.
7. Remove the belt guards at each deck pulley by removing the hex bolts, lock washers and hex nuts. See figure 2.



**FIGURE 2.**

8. Remove and replace the belt, following the instructions in reverse order.